

YAMAHA

PARTS LIST

MODEL IT175F

(MODEL CODE 2W6)

LIT:10012-W6-00

COPY RIGHT: ALL RIGHTS RESERVED

NO PART OF THIS PUBLICATION MAY BE REPRODUCED WITHOUT PERMISSION.

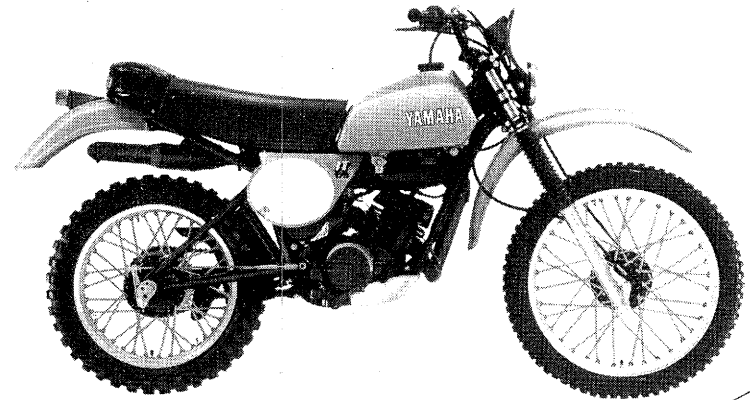
2W6-28198-65

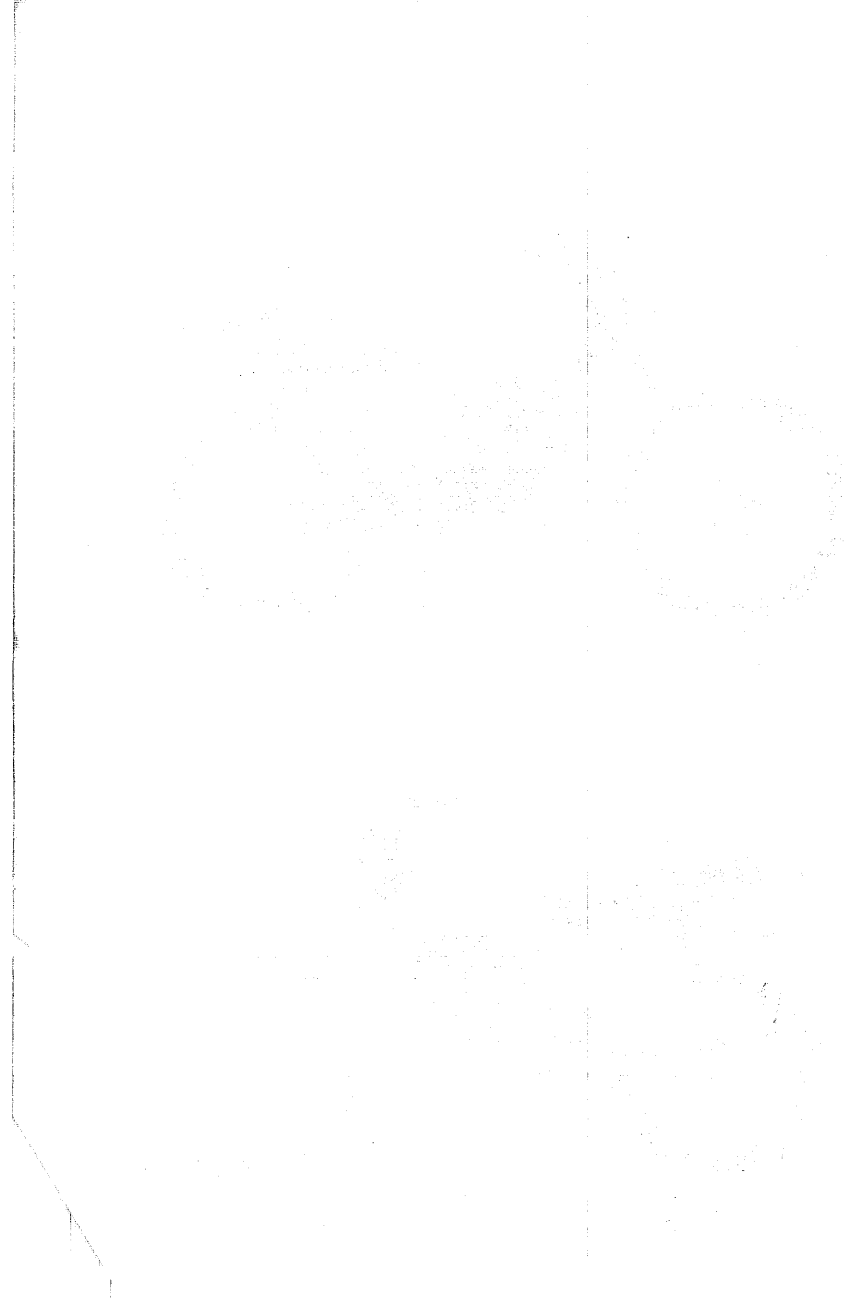




NOTICE

ALL PART NUMBERS CONTAINED IN THIS CATALOGUE ARE COMPRISED OF TEN DIGITS. WHEN ORDERING, PLEASE ADD TWO ZEROS TO THE END OF EACH PART NUMBER REQUIRED TO CONVERT THE TEN DIGITS INTO THE NEW TWELVE DIGIT NUMBERS.





FOREWORD

This Parts List is related to the parts in use for the Yamaha IT175F. When you are ordering replacement parts for the IT175F, refer to this Parts List and quote both part numbers and part names correctly.

1. Modifications or additions which have been made after issue of the Parts List will be announced in the Yamaha Parts News.

It is advisable that according to the Yamaha Parts News you make necessary corrections to the Parts List on hand to keep it up-to-date.

2. Abbreviations

The following abbreviations are used in this Parts List.

U.R. Use size (thickness) and/or number as required.

U.N. Use as many as you need.

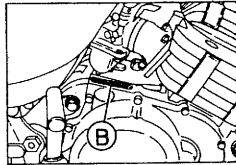
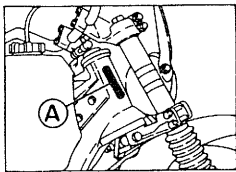
F# Frame No. (Applicable machine No.)

3. Parts, which are to be supplied in the form of assemblies, are listed with an indentation of one letter's space, and a dot (.) is put against the name of each part.

EXAMPLE CARBURETOR ASS'Y
 . JET, pilot
 . NOZZLE, main

4. Initial Serial No. and Color Code

(A) Frame Serial No.	2W6000101 and following
(B) Engine Serial No.	2W6000101 and following



Color Code	Color Name
33	Yamaha Black
91	Uni-Chrome Plated
93	Chrome Plated
98	Low Gloss Black
R4	Heat Proof Black

CONTENTS

ENGINE

Fig. 1	Crankcase - Cylinder	1
Fig. 2	Crankcase Cover	2
Fig. 3	Crank - Piston	3
Fig. 4	Clutch	5
Fig. 5	Transmission	6
Fig. 6	Shifter 1	8
Fig. 7	Shifter 2	9
Fig. 8	Kick Starter	10
Fig. 9	Intake	11
Fig. 10	Carburetor	12
Fig. 11	Exhaust	14
Fig. 12	C.D.I. Magneto	16

CHASSIS

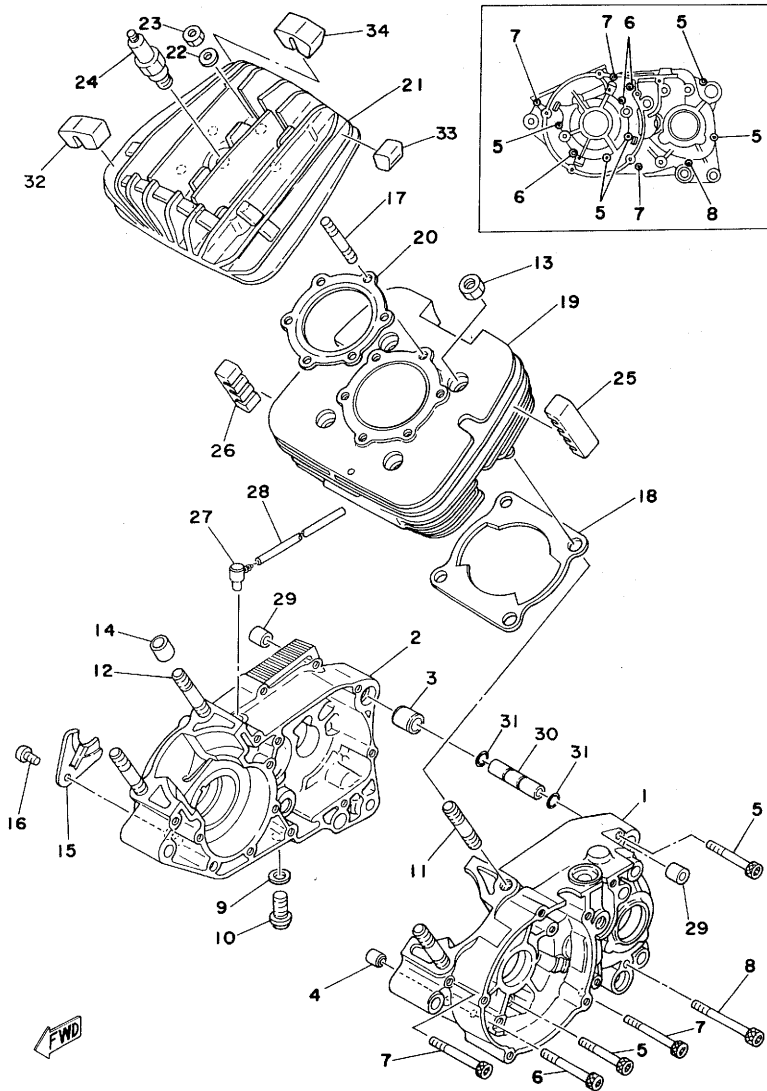
Fig. 13	Frame - Side Cover	17
Fig. 14	Rear Arm - Chain Case	18
Fig. 15	Rear Cushion	20
Fig. 16	Stand - Footrest - Brake Pedal	21
Fig. 17	Front Fender - Rear Fender	22
Fig. 18	Front Fork	23
Fig. 19	Steering	25
Fig. 20	Handle - Wire	26
Fig. 21	Fuel Tank	28
Fig. 22	Seat	29
Fig. 23	Front Wheel	30
Fig. 24	Rear Wheel	31
Fig. 25	Head Lamp	33
Fig. 26	Speedometer	34
Fig. 27	Tail Lamp	35
Fig. 28	Electrical	36

REPAIR KIT

Fig. 29	Repair Kit	38
---------	------------	----

NUMERICAL INDEX

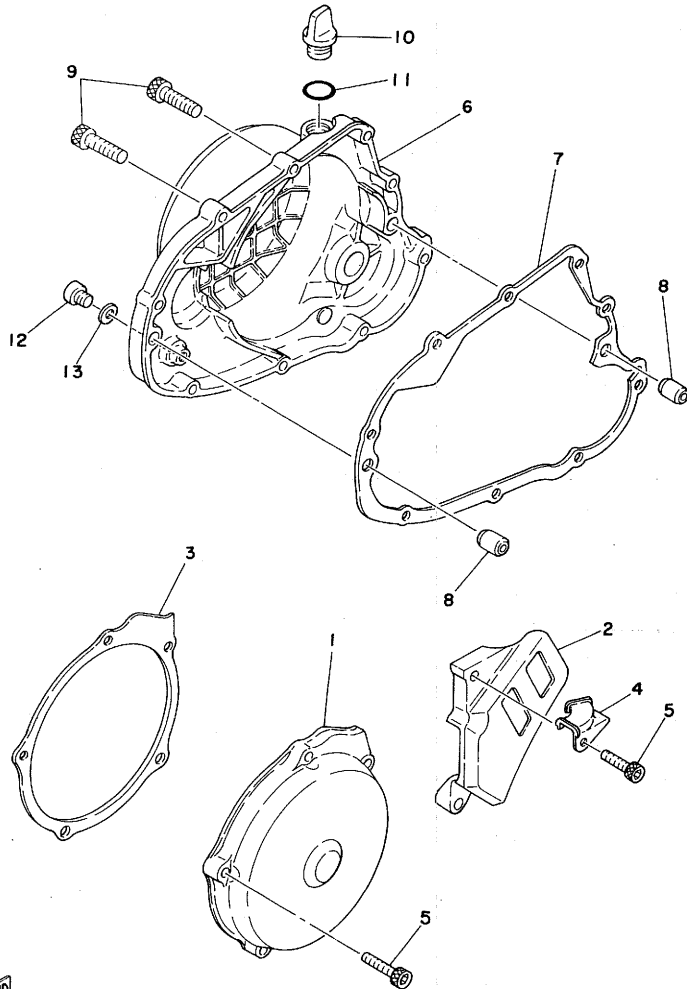
Fig. 1 CRANKCASE · CYLINDER



Ref.No.	Part No.	Description	Q'ty	Remarks
1- 1	1W2-15111-02 ✓	CASE, crank left	1	
2	1W2-15121-02 ✓	CASE, crank right	1	
3	91810-19020 ✓	PIN, dowel (10.5x20)	1	
4	91830-21014 ✓	PIN, dowel (6.4x10.14)	1	
5	91316-06050 ✓	BOLT, hexagon socket head	5	
6	91316-06060 ✓	BOLT, hexagon socket head	3	
7	91316-06070 ✓	BOLT, hexagon socket head	3	
8	91316-06075 ✓	BOLT, hexagon socket head	1	
9	90430-12038 ✓	GASKET (32x153x3.00)	1	
10	90340-12005 ✓	PLUG, straight screw (1.32x15.3x1.00)	1	
11	90116-10257 ✓	BOLT, stud	2	90116-10257
12	90116-10258 ✓	BOLT, stud	2	90116-10258
13	90179-10201 ✓	NUT	4	
14	91830-21016 ✓	PIN, dowel (10.5x14.16)	2	
15	304-15128-00 ✓	HOLDER, right	1	
16	92501-08010 ✓	SCREW, panhead	1	
17	90116-08104 ✓	BOLT, stud (3.33x17.0x0.0)	6	90116-08104
18	1W2-11351-00 ✓	GASKET, cylinder	1	
19	2W6-11311-00 ✓	CYLINDER	1	
20	1W2-11181-00 ✓	GASKET, cylinder head	1	
21	1W2-11111-00 ✓	HEAD, cylinder	1	
22	90201-08100 ✓	WASHER, plate	6	
23	95301-08600 ✓	NUT, hexagon	6	
24	B-9 EV ✓	PLUG, spark (CHAMPION 26)	1	
25	2A6-11127-00 ✓	ABSORBER 4	2	
26	2A6-11128-00 ✓	ABSORBER 5	2	
27	2N4-15371-00 ✓	BREATHER	1	
28	90445-07340 ✓	HOSE (22x3.10)	1	
29	328-15316-00 ✓	DAMPER, engine mount	2	
30	401-15317-00 ✓	SPACER, engine mount	1	
31	93210-11073 ✓	O-RING (24x10.8)	2	
32	1W2-11161-00 ✓	ABSORBER 1	2	
33	1W2-11162-00 ✓	ABSORBER 2	1	
34	1W2-11127-00 ✓	ABSORBER 3	1	

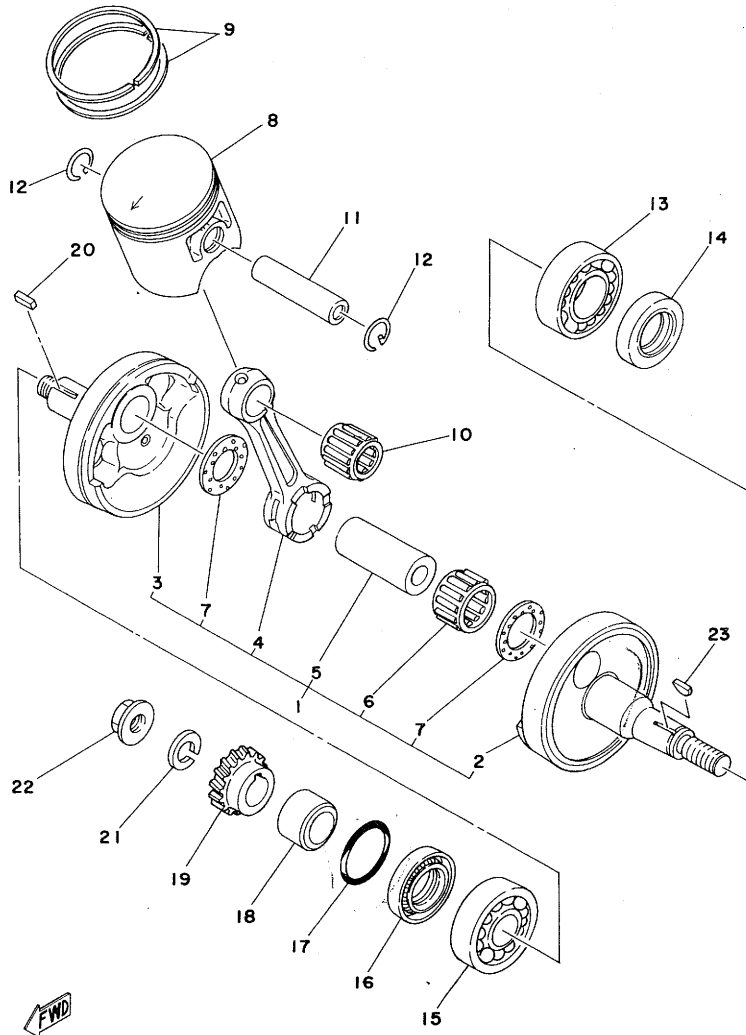
*- The parts marked with ✓ in the part No. column are not supplied directly by Yamaha; these have to be found locally.

Fig. 2 CRANKCASE COVER



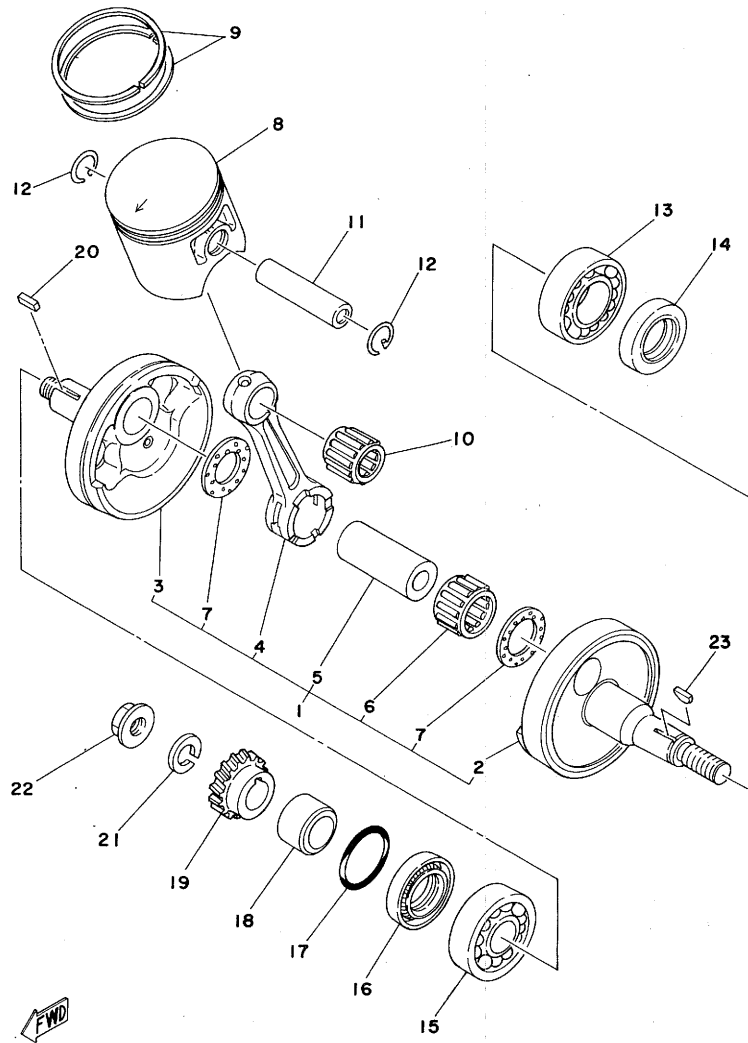
Ref.No.	Part No.	Description	Q'ty	Remarks
2-1	1W1-15411-00 ✓	COVER, crankcase left 1	1	
2	1W1-15421-01 ✓	COVER, crankcase left 2	1	
3	1W1-15455-00 ✓	GASKET, crankcase cover left	1	
4	90465-10119 ✓	CLAMP	1	
5	91316-06030 ✓	BOLT, hexagon socket head	7	
6	1W1-15431-00 ✓	COVER, crankcase right	1	
7	1W1-15451-00 ✓	GASKET, crankcase cover right	1	
8	91830-21014 ✓	PIN, dowel (32-10-14)	2	
9	91316-06030 ✓	BOLT, hexagon socket head	9	
10	1G8-15362-00 ✓	PLUG, oil level	1	
11	93210-14104 ✓	O-RING (22-3-8)	1	
12	92506-06008 ✓	SCREW, panhead	1	
13	90430-06016 ✓	GASKET (32-15304-00)	1	

Fig. 3 CRANK · PISTON



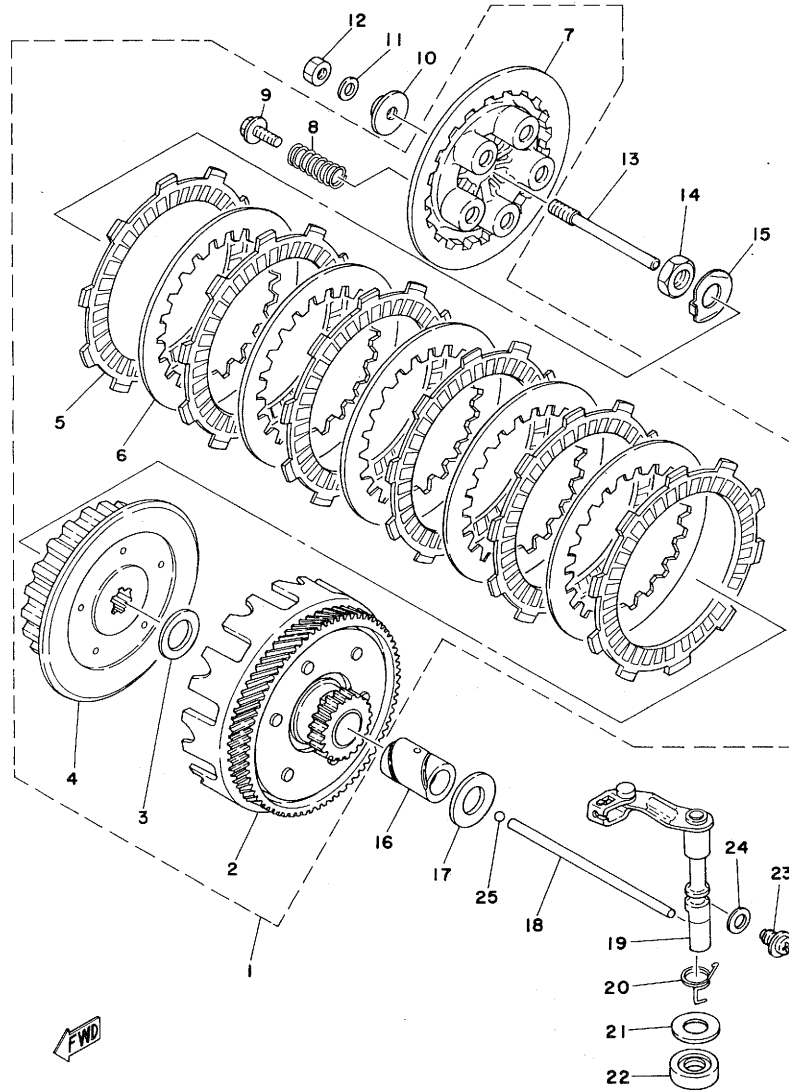
Ref.No.	Part No.	Description	Q'ty	Remarks
3- 1	2W6-11400-00 ✓	CRANK ASS'Y	1	
2	1W1-11412-01 ✓	CRANK, left	1	
3	1W1-11422-01 ✓	CRANK, right	1	
4	1G8-11651-00 ✓	ROD, connecting	1	
5	248-11681-01 ✓	PIN, crank	1	
6	93310-422G3 ✓	BEARING, con-rod big end	1	
7	90209-22071 ✓	WASHER (164-11685-00)	2	
✓ 8	2W6-11631-00-96 ✓	PISTON (65.96mm STD)	1	U.R
✓	2W6-11631-00-97 ✓	PISTON (65.97mm STD)	1	U.R
✓	2W6-11635-00 ✓	PISTON (66.25mm 1st O.S)	1	U.R Alternate-Parts
✓	2W6-11636-00 ✓	PISTON (66.50mm 2nd O.S)	1	U.R Alternate-Parts
✓	2W6-11637-00 ✓	PISTON (66.75mm 3rd O.S)	1	U.R Alternate-Parts
✓	2W6-11638-00 ✓	PISTON (67.00mm 4th O.S)	1	U.R Alternate-Parts
9	1W2-11601-00	PISTON RING SET (STD)		
✓	2W6-11601-00 ✓	PISTON RING SET (STD)	1	U.R
	1W2-11601-10	PISTON RING SET (1st O.S)		Alternate-Parts
✓	2W6-11601-10 ✓	PISTON RING SET (1st O.S)	1	U.R Alternate-Parts
	1W2-11601-20	PISTON RING SET (2nd O.S)		Alternate-Parts
✓	2W6-11601-20 ✓	PISTON RING SET (2nd O.S)	1	U.R Alternate-Parts
	1W2-11601-30	PISTON RING SET (3rd O.S)		Alternate-Parts
✓	2W6-11601-30 ✓	PISTON RING SET (3rd O.S)	1	U.R Alternate-Parts
	1W2-11601-40	PISTON RING SET (4th O.S)		Alternate-Parts
✓	2W6-11601-40 ✓	PISTON RING SET (4th O.S)	1	U.R Alternate-Parts
10	93310-216E1 ✓	BEARING, con-rod small end	1	
11	251-11633-00 ✓	PIN, piston	1	
12	93450-17025 ✓	CIRCLIP (137-11634-00)	2	
13	93306-20529 ✓	BEARING (0205C4SH)	1	
14	93102-25144 ✓	OIL SEAL (MHSA-25-40-8)	1	
15	93306-30406 ✓	BEARING, crank (0304C3SH)	1	
16	93103-28100 ✓	OIL SEAL (MHSD-28-40-8)	1	
17	93210-18023 ✓	O-RING (12-17-6)	1	
18	90387-20488 ✓	COLLAR, distance (20-28-18-5)	1	
19	1W1-16111-00 ✓	GEAR, primary drive (22T)	1	
20	90282-05005 ✓	KEY, straight (053-11546-00)	1	

Fig. 3 CRANK · PISTON



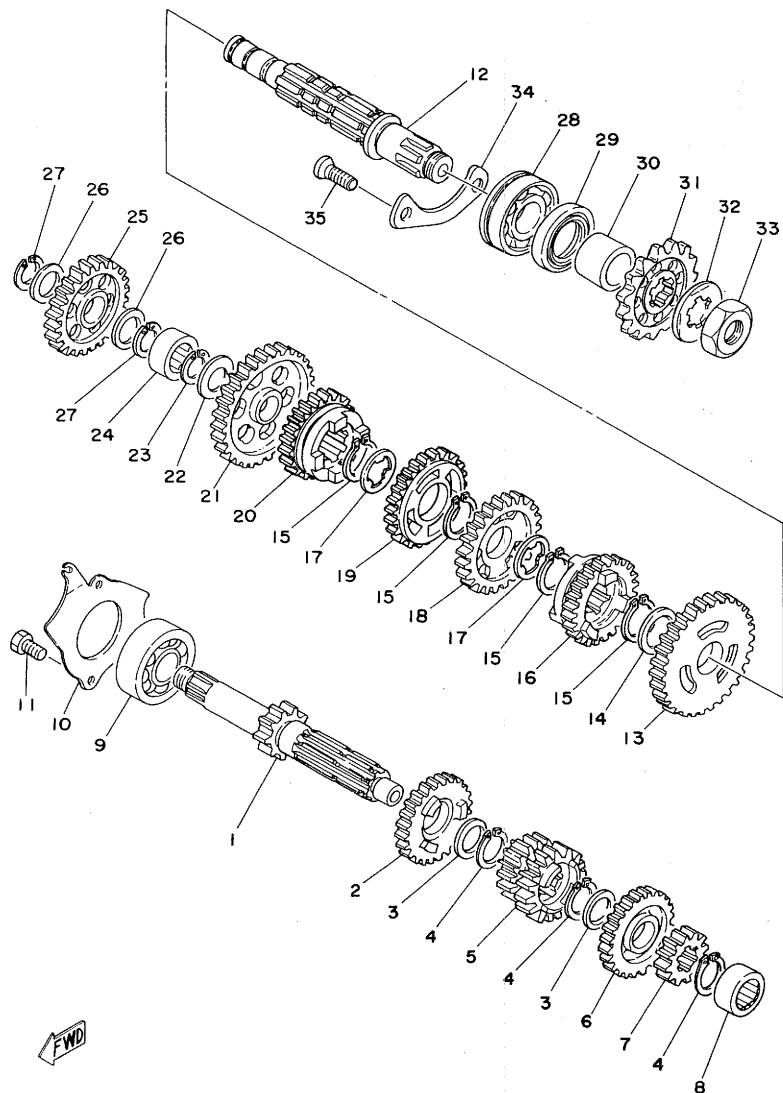
Ref.No.	Part No.	Description	Q'ty	Remarks
3-21	90204-12007 ✓	WASHER, spring	1	
22	90179-12244 ✓	NUT	1	
23	90280-03017 ✓	KEY, woodruff (146-1545-00)	1	

Fig. 4 CLUTCH



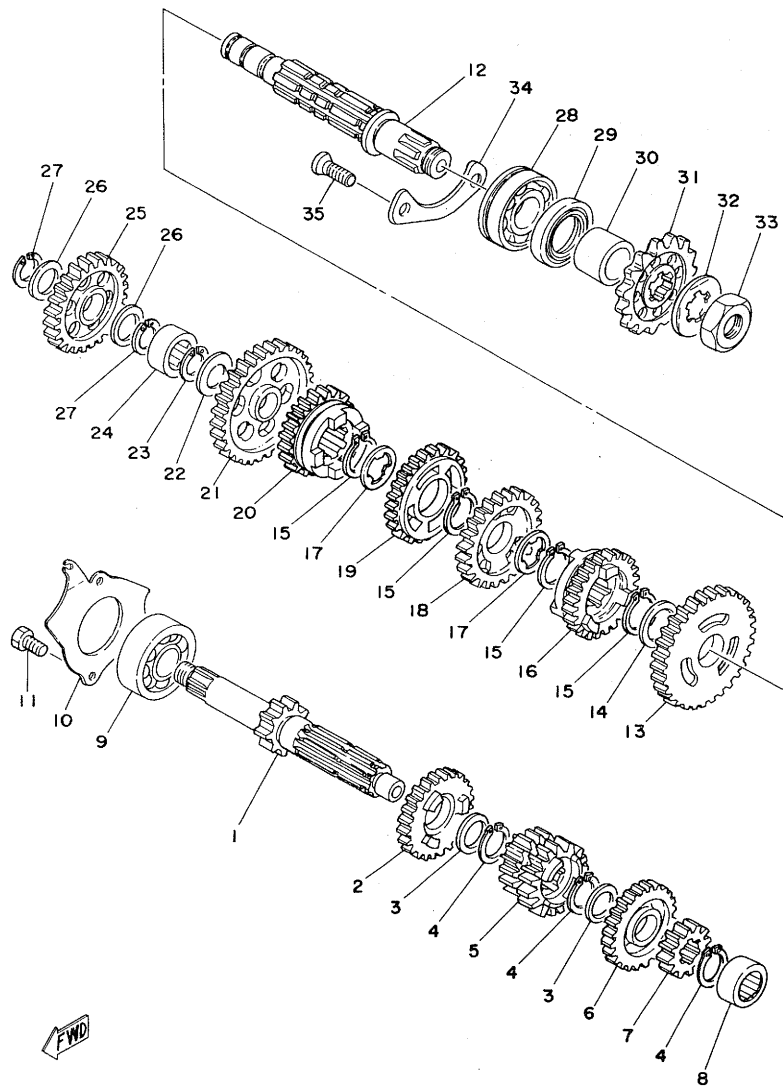
Ref.No.	Part No.	Description	Q'ty	Remarks
4	1	1W1-16301-01 ✓	1	CLUTCH ASS'Y
2	1W1-16150-01 ✓	PRIMARY DRIVEN GEAR COMP. (71T)	1	
3	90201-17550 ✓	WASHER, plate	1	
4	1G8-16371-00 ✓	BOSS, clutch	1	
5	537-16321-00 ✓	PLATE, friction	6	
6	137-16325-70 ✓	PLATE, clutch 2	5	
7	1W1-16351-00 ✓	PLATE, pressure	1	
8	90501-20361 ✓	SPRING, compression	5	
9	90159-05011 ✓	SCREW, with washer	5	
10	1W1-16358-00 ✓	PLATE, push	1	
11	92901-06200 ✓	WASHER, plain	1	
12	95301-06600 ✓	NUT, hexagon	1	
13	1W1-16356-00 ✓	ROD, push 1	1	
14	90170-14171 ✓	NUT, hexagon	1	
15	90215-14144 ✓	WASHER, lock	1	
16	90560-17147 ✓	SPACER	1	
17	90201-17550 ✓	WASHER, plate	1	
18	1W1-16357-00 ✓	ROD, push 2	1	
19	1W1-16380-00 ✓	PUSH LEVER ASS'Y	1	
20	90508-20345 ✓	SPRING, torsion	1	
21	90201-14217 ✓	WASHER, plate (158-25153-00)	1	
22	93104-14004 ✓	OIL SEAL (SO-14-25-5)	1	
23	90149-08108 ✓	SCREW	1	
24	90430-08069 ✓	GASKET (425-16387-00)	1	
25	90562-10010 3/16 INCH 90562-10010 ✓	BALL (3/16 INCH)	1	

Fig. 5 TRANSMISSION



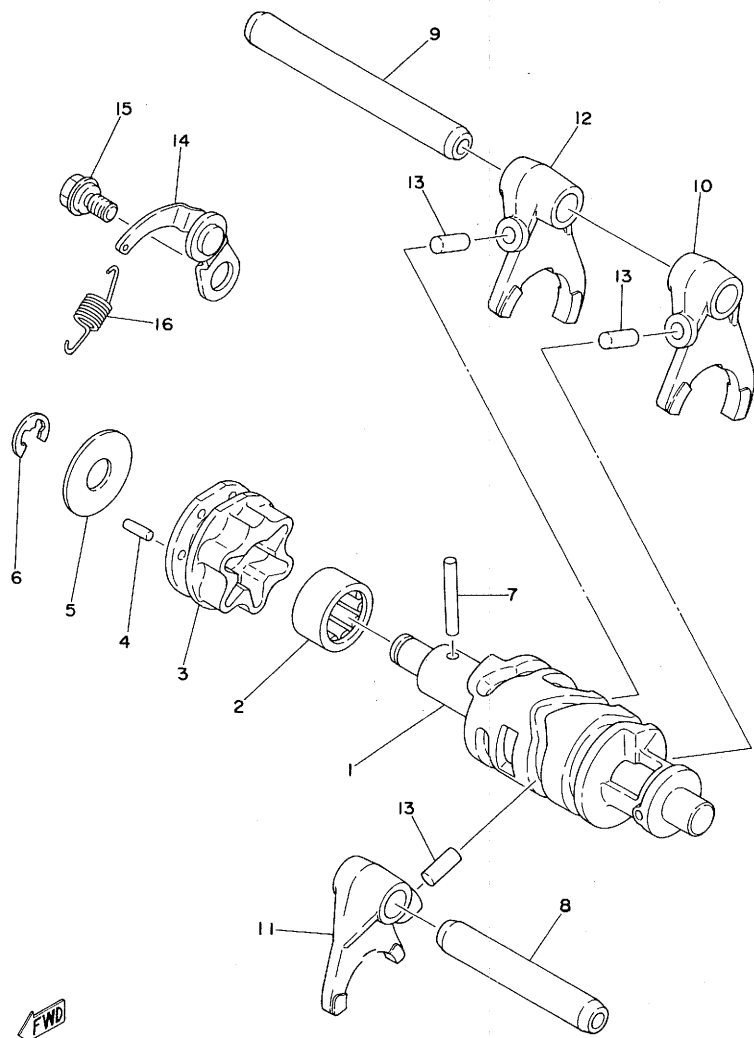
Ref.No.	Part No.	Description	Qty	Remarks	
5- 1	1W2-17411-00 ✓	AXLE, main (11T)	1		
2	1W2-17151-00 ✓	GEAR, 5th pinion (23T)	1		
3	90201-20266 ✓	WASHER, plate (132-17216-00)	2		
4	93410-20038 ✓	CIRCLIP (S-20)	3		
5	2W6-17131-01 ✓	GEAR, 3rd/4th pinion (18T, 21T)	1		
6	1W2-17161-00 ✓	GEAR, 6th pinion (25T)	1		
7	1W2-17121-00 ✓	GEAR, 2nd pinion (15T)	1		
8	93311-41530 ✓	BEARING	1		
9	93306-30304 ^{6303Z} ✓	BEARING (86304)	1		
10	1W1-17471-01 ✓	PLATE, bearing cover	1		
11	97321-06012 ✓	BOLT, hexagon	2		
12	1W1-17421-00 ✓	AXLE, drive	1		
13	1W2-17221-01 ✓	GEAR, 2nd wheel (31T)	1		
14	90201-22555 ✓	WASHER, plate	1		
15	93410-22039 ✓	CIRCLIP (S-22)	4		
16	1W2-17261-00 ✓	GEAR, 6th wheel (21T)	1		
17	90209-18135 ✓	WASHER	2		
18	1W2-17241-00 ✓	GEAR, 4th wheel (25T)	1		
19	2W6-17231-01 ✓	GEAR, 3rd wheel (27T)	1		
20	2W6-17251-01 ✓	GEAR, 5th wheel (23T)	1		
21	1W2-17211-01 ✓	GEAR, 1st wheel (34T)	1		
22	90201-15701 ✓	WASHER, plate	1		
23	93440-15012 ✓	CIRCLIP (150 speed)	1		
24	93311-31515 ✓	BEARING	1		
25	525-15651-00 ✓	GEAR, kick idle (25T)	1		
26	137-17417-00-05 ✓	SHIM, main axle (137-22655)	2		
27	93440-15012 ✓	CIRCLIP (150 speed)	2		
28	93306-30411 ✓	BEARING (86304)	1		
29	93102-26042 ✓	OIL SEAL (SD-26-38-5)	1		
30	90387-20205 ^{202AD} ✓	COLLAR (20-26-111)	1		
31	1G8-17461-10 ✓	SPROCKET, drive (11T)	} U.R.	STD	
	1W1-17461-20 ✓	SPROCKET, drive (12T)			1
	1G8-17461-30 ✓	SPROCKET, drive (13T)			1
32	90215-16127 ✓	WASHER, lock	1		
33	90179-16226 ✓	NUT	1		

Fig. 5 TRANSMISSION



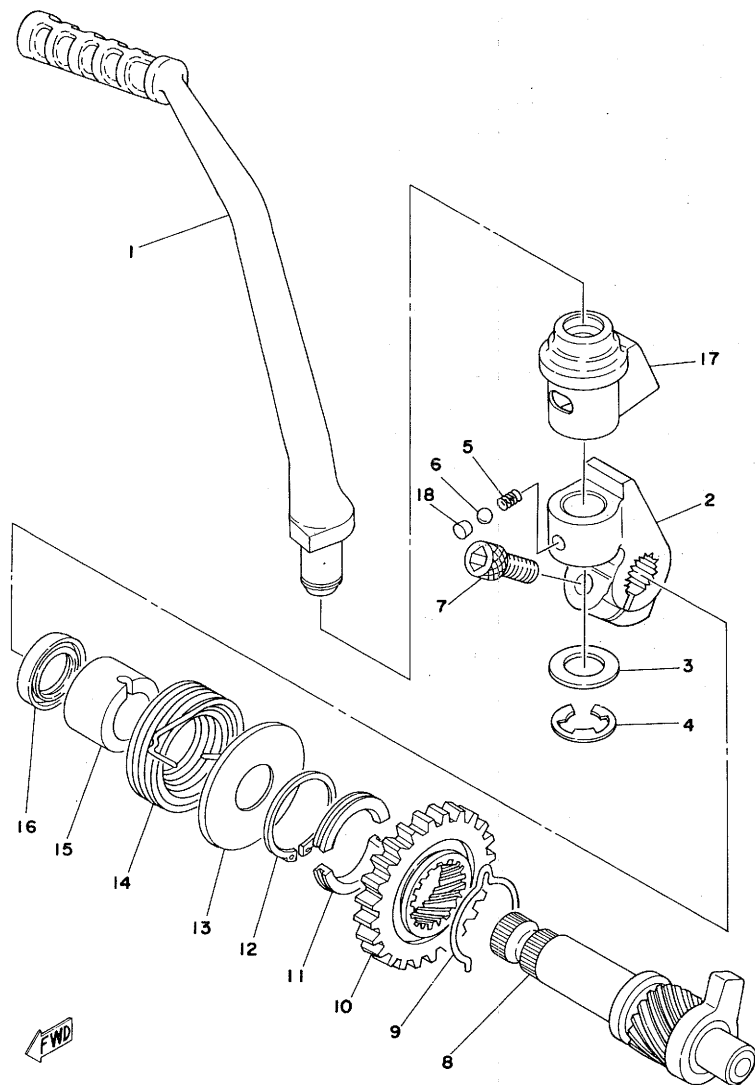
Ref.No.	Part No.	Description	Q'ty	Remarks
5-34	1W1-15381-00	✓ PLATE, bearing cover	1	
35	92701-06012	✓ SCREW, flathead	2	

Fig. 6 SHIFTER 1



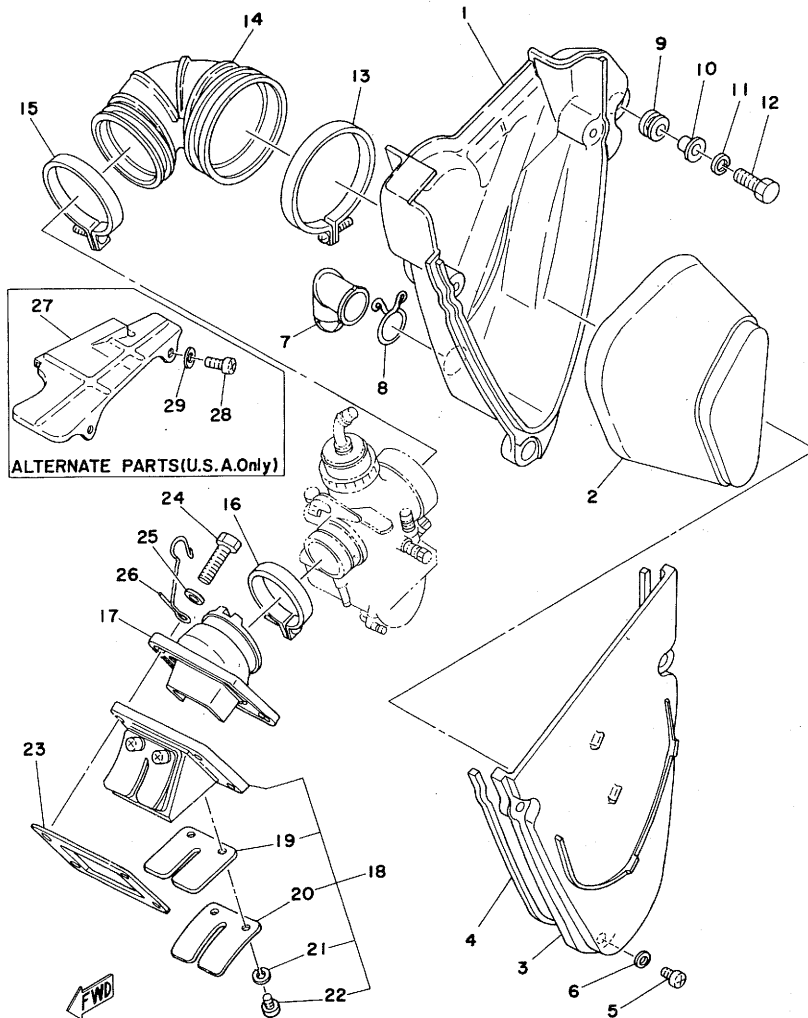
Ref.No.	Part No.	Description	Q'ty	Remarks
6- 1	2W6-18541-00 ✓	CAM, shift	1	
2	93315-21813 ✓	BEARING	1	
3	1W1-18185-00 ✓	SEGMENT	1	
4	93604-12037 ✓	PIN, dowel (43333)	6	
5	1W1-18561-00 ✓	PLATE, side	1	
6	93430-08006 ✓	CIRCLIP (133)	1	
7	93604-30018 ✓	PIN, dowel (42203)	1	
8	1W1-18531-00 ✓	BAR, shift fork guide 1	1	
9	1W1-18535-00 ✓	BAR, shift fork guide 2	1	
10	2W6-18511-00 ✓	FORK, shift 1	1	
11	2W6-18512-00 ✓	FORK, shift 2	1	
12	2W6-18513-00 ✓	FORK, shift 3	1	
13	90250-06013 ✓	PIN, straight (257-18552-00)	3	
14	1W1-18140-00 ✓	STOPPER LEVER ASS'Y	1	
15	1W1-18177-00 ✓	BOLT, stopper 2	1	
16	90506-09156 ✓	SPRING, tension	1	

Fig. 8 KICK STARTER



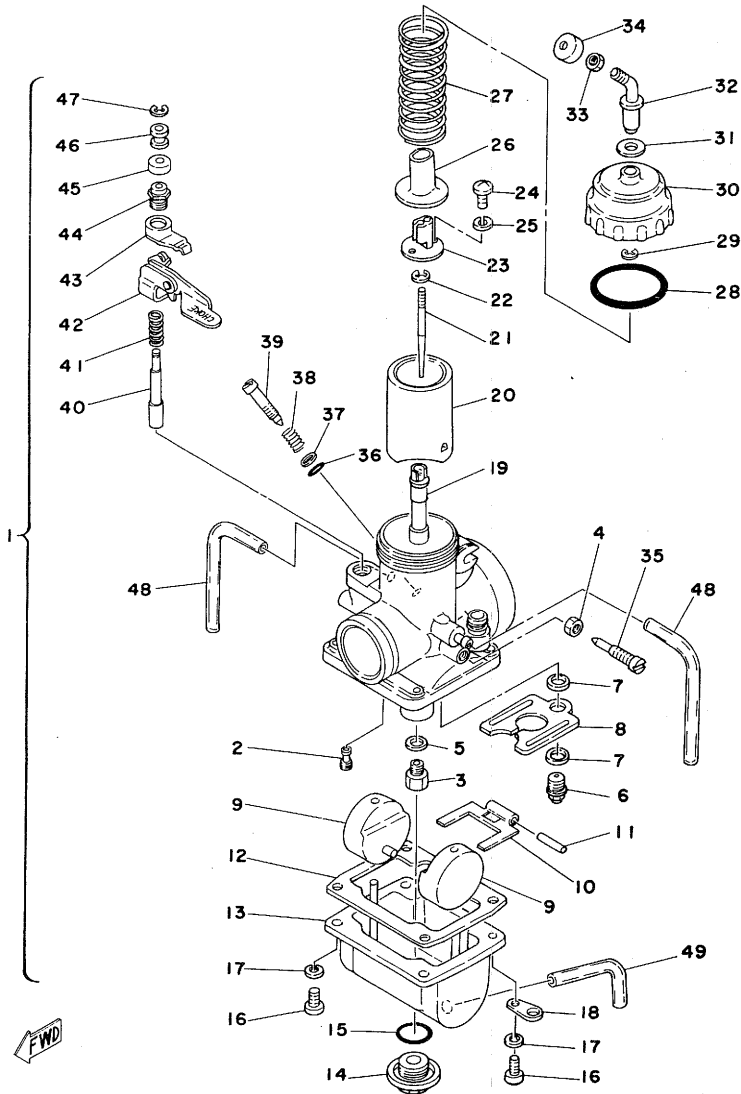
Ref.No.	Part No.	Description	Qty	Remarks
8- 1	1W1-15611-02-33	✓ CRANK, kick	1	Yamaha Black
2	1W1-15621-01	✓ BOSS, kick crank	1	
3	90201-12541	✓ WASHER, plate	1	
4	93430-08007	✓ CIRCLIP (S-30)	1	
5	90501-10459	✓ SPRING, compression	1	
6	92408-16010 3/16 INCH	✓ BALL (3/16 inch)	1	
7	91316-08025	✓ BOLT, hexagon socket head	1	
8	1W1-15660-00	✓ KICK AXLE ASS'Y	1	
9	90468-26048	✓ CLIP (S-1563-50)	1	
10	1W1-15641-00	✓ GEAR, kick (27T)	1	
11	248-15654-00	✓ HOLDER, kick gear	2	
12	93410-30012	✓ CIRCLIP (S-30)	1	
13	401-15676-00	✓ COVER, spring	1	
14	90508-26346	✓ SPRING, torsion	1	
15	1W1-15666-00	✓ SPACER	1	
16	93101-17062	✓ OIL SEAL (S-17-25-4)	1	
17	1W1-15618-01	✓ COVER, kick crank boss	1	
18	90336-06030	✓ PLUG	1	

Fig. 9 INTAKE



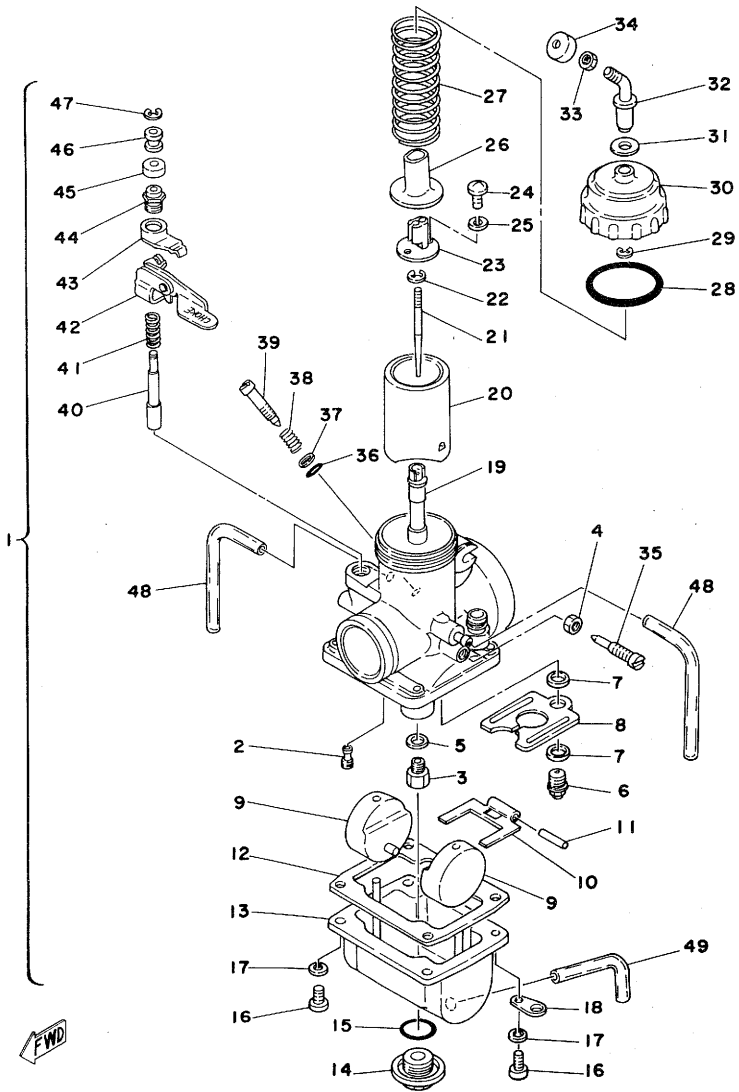
Ref.No.	Part No.	Description	Q'ty	Remarks
9- 1	2W6-14411-00 ✓	CASE, air cleaner	1	
2	1W1-14450-02 ✓	ELEMENT ASS'Y	1	
3	1W2-14412-01 ✓	CAP, case	1	
4	1W1-14452-00 ✓	SEAL	1	
5	92501-06025 ✓	SCREW, panhead	3	
6	92901-06600 ✓	WASHER, plate	3	
7	1W1-14457-01 ✓	SEAL	1	
8	90467-20030 ✓	CLIP	1	
9	90480-14102 ✓	GROMMET (27492777200)	3	
10	90387-07391 ✓	COLLAR (23722103100)	3	
11	92901-06100 ✓	WASHER, spring	3	
12	97301-06025 ✓	BOLT, hexagon	3	
13	90460-77016 ✓	CLAMP, hose (2681445600)	1	
14	1W1-14453-00 ✓	JOINT	1	
15	90460-64065 ✓	CLAMP, hose (3118245500)	1	
16	90460-49058 ✓	CLAMP, hose (27456445500)	1	
17	1W1-13565-00 ✓	JOINT, carburetor	1	
18	1L8-13610-00 ✓	REED VALVE ASS'Y	1	
19	1L8-13613-00 ✓	. REED, valve	2	
20	311-13616-01 ✓	. STOPPER, reed valve	2	
21	92901-03100 ✓	. WASHER, spring	4	
22	98512-03008 ✓	. SCREW, panhead	4	
23	311-13621-01 ✓	PACKING, valve seat	1	
24	97301-06025 ✓	BOLT, hexagon	4	
25	92901-06600 ✓	WASHER, plate	4	
26	90462-20034 ✓	CLAMP	1	
ALTERNATE PARTS (U.S.A. ONLY)				
27	2W6-14477-00	PLATE	1	
28	92501-06012	SCREW, panhead	2	
29	92901-06600	WASHER, plate	2	

Fig. 10 CARBURETOR



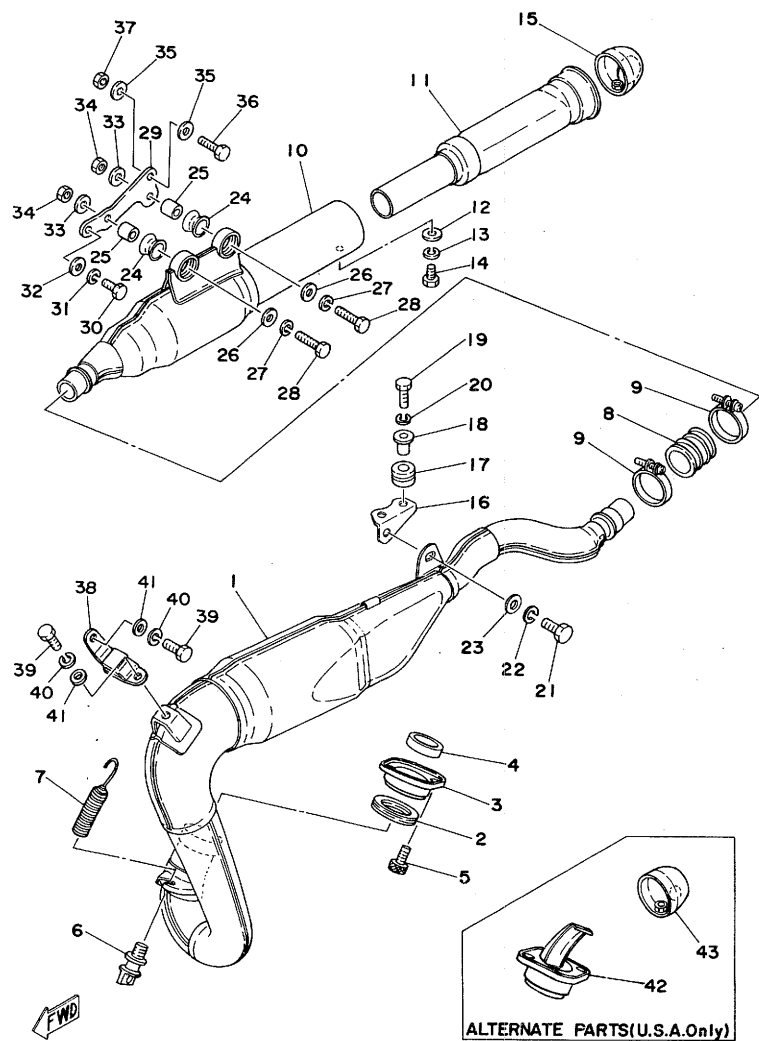
Ref.No.	Part No.	Description	Qty	Remarks
10-1	2W6-14101-00 ✓	CARBURETOR ASS'Y	1	
2	193-14142-70 ✓	. JET, pilot (#70)	1	
3	137-14143-70 ✓	. JET, main (#350)	1	U R
	137-14143-72 ✓	. JET, main (#360)	1	U R STD
	137-14143-74 ✓	. JET, main (#370)	1	U R
4	802-14161-00 ✓	. NUT, wire adjusting	1	
5	1G8-14153-00 ✓	. RING	1	
6	239-14190-33 ✓	. VALVE SEAT ASS'Y (#3.3)	1	
7	239-14195-00 ✓	. WASHER, valve seat	2	
8	483-14146-00 ✓	. PLATE	1	
9	310-14185-00 ✓	. FLOAT	2	
10	310-14187-00 ✓	. ARM, float	1	
11	127-14186-00 ✓	. PIN, float	1	
12	483-14184-00 ✓	. GASKET, float chamber	1	
13	310-14183-16	. BODY, float chamber	1	NOT FOR SALE
14	500-14115-00 ✓	. PLUG, screw	1	
15	558-14147-00 ✓	. O-RING	1	
16	98501-05016 ✓	. SCREW, panhead	4	
17	92901-05100 ✓	. WASHER, spring	4	
18	313-14146-00 ✓	. PLATE	2	
19	239-14141-44 ✓	. NOZZLE, main (P-4)	1	
20	509-14112-20 ✓	. VALVE, throttle (#2.0)	1	
21	239-14116-21 ✓	. NEEDLE (6F21-4)	1	
22	164-14137-00 ✓	. CLIP	1	
23	509-14274-00 ✓	. CONNECTOR	1	
24	98501-03008 ✓	. SCREW, panhead	2	
25	92901-03100 ✓	. WASHER, spring	2	
26	509-14136-00 ✓	. SEAT	1	
27	363-14131-00 ✓	. SPRING, throttle valve	1	
28	93210-40289 ✓	. O-RING (#2.0)	1	
29	363-14137-00 ✓	. CIRCLIP	1	
30	500-14158-00 ✓	. TOP, mixing chamber	1	
31	509-14198-00 ✓	. GASKET	1	
32	500-14155-00 ✓	. HOLDER, guide	1	
33	127-14161-00 ✓	. NUT, wire adjusting	1	

Fig. 10 CARBURETOR



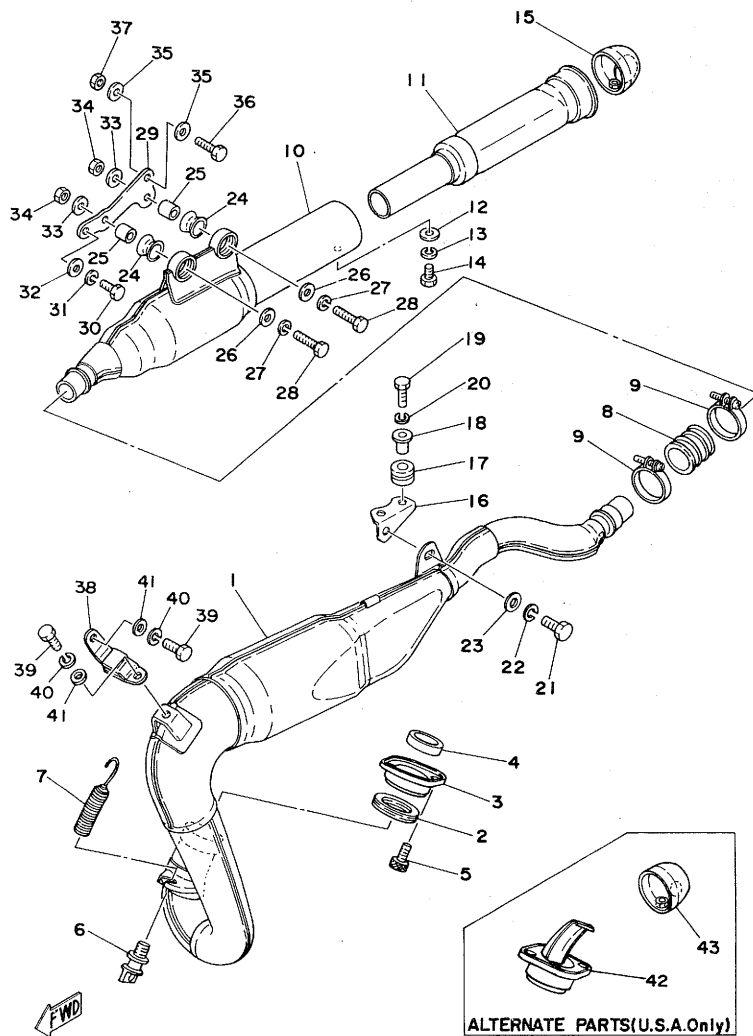
Ref.No.	Part No.	Description	Q'ty	Remarks
10-34	1M1-14169-00 ✓	. CAP	1	
35	204-14122-00 ✓	. SCREW, throttle	1	
36	812-14147-00	. O-RING	1	
37	812-14235-00	. WASHER	1	
38	137-14134-00 ✓	. SPRING, air adjusting	1	
39	1G8-14123-00 ✓	. SCREW, air adjusting	1	
40	1W1-14171-00 ✓	. PLUNGER, starter	1	
41	256-14135-00 ✓	. SPRING, plunger	1	
42	1W1-14175-01 ✓	. LEVER, starter left	1	
43	275-14178-00 ✓	. PLATE, spring	1	
44	802-14174-00 ✓	. CAP, plunger	1	
45	802-14173-00 ✓	. COVER, plunger cap	1	
46	583-14918-00 ✓	. RING, plunger	1	
47	737-14137-00 ✓	. CLIP, plunger	1	
48	312-14137-00 PURCHASE LOCALLY	. HOSE, air vent	2	
49	295-14136-00 PURCHASE LOCALLY	. HOSE, overflow	1	

Fig. 11 EXHAUST



Ref.No.	Part No.	Description	Q'ty	Remarks
11- 1	2W6-14610-00 ✓	EXHAUST PIPE ASS'Y	1	
2	248-14623-00 ✓	GASKET	1	
3	1L8-14612-00 ✓	NUT, ring	1	
4	152-14613-00 ✓	GASKET, exhaust pipe	1	
5	91316-06016 ✓	BOLT, hexagon socket head	2	
6	409-14684-00 ✓	BOLT, hook	1	
7	90507-20012 ✓	SPRING, tension (245-14683-00)≠	1	
8	1W2-14714-00 ✓	GASKET, muffler joint	1	
9	90460-37026 ✓	CLAMP (396-14456-00)≠	2	
10	2W6-14753-00 ✓	SILENCER	1	
11	1W2-14752-00 ✓	PIPE, outlet	1	
12	92901-06600 ✓	WASHER, plate	1	
13	92901-06100 ✓	WASHER, spring	1	
14	97301-06012 ✓	BOLT, hexagon	1	
15	1W2-14787-00 ✓	CAP, silencer	1	
16	1W2-14771-10 ✓	STAY, muffler 1	1	
17	90480-14101 ✓	GROMMET (242-14638-00)≠	2	
18	90387-06388 ✓	COLLAR (322-1544-00)≠	2	
19	97301-06025 ✓	BOLT, hexagon	2	
20	92901-06100 ✓	WASHER, spring	2	
21	97301-08016 ✓	BOLT, hexagon	1	
22	92901-08100 ✓	WASHER, spring	1	
23	92901-08600 ✓	WASHER, plate	1	
24	565-14747-00 ✓	DAMPER, muffler	2	
25	90387-08258 ✓	COLLAR (83-15-15)≠	2	
26	90201-08113 ✓	WASHER, plate (61-148556-30)≠	2	
27	92901-08100 ✓	WASHER, spring	2	
28	97301-08035 ✓	BOLT, hexagon	2	
29	2W6-14781-00 ✓	STAY, muffler	1	
30	97301-08020 ✓	BOLT, hexagon	1	
31	92901-08100 ✓	WASHER, spring	1	
32	92901-08600 ✓	WASHER, plate	1	
33	92901-08200 ✓	WASHER, plain	2	
34	95301-08700 ✓	NUT, hexagon	2	
35	92901-06067 ✓	WASHER, plate	2	

Fig. 11 EXHAUST

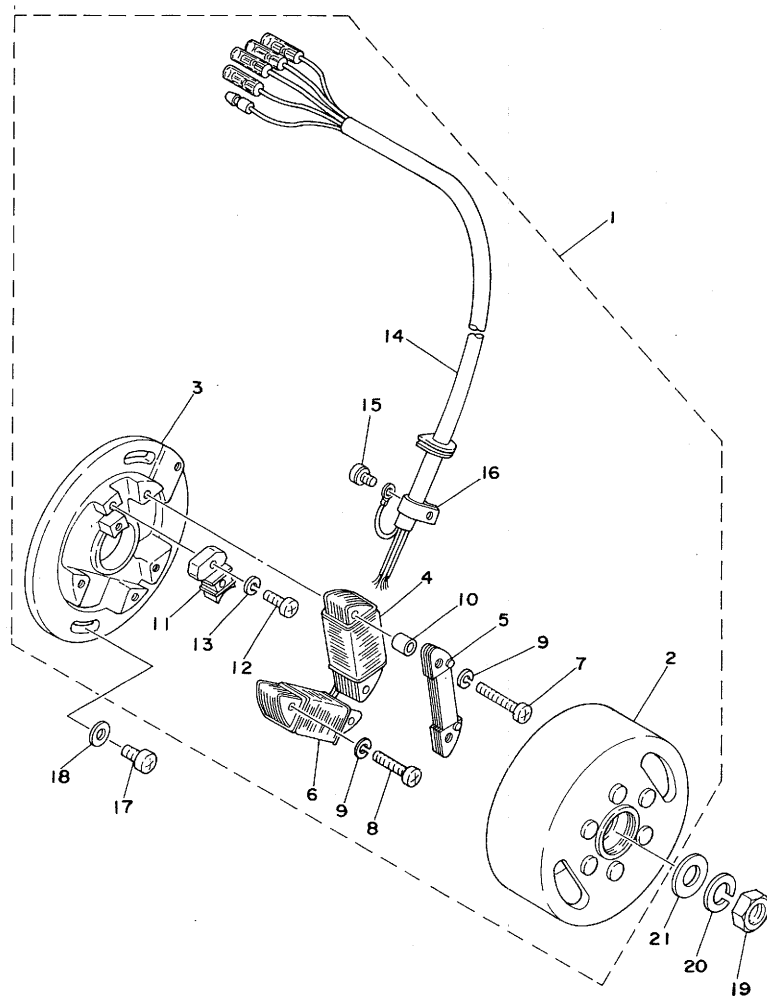


Ref.No.	Part No.	Description	Q'ty	Remarks
11-36	97301-06030 ✓	BOLT, hexagon	1	
37	95601-06100 ✓	NUT, U	1	
38	1M1-14772-00 ✓	STAY, muffler 2	1	
39	97321-06016 ✓	BOLT, hexagon	2	
40	92901-06100 ✓	WASHER, spring	2	
41	92901-06600 ✓	WASHER, plate	2	

~~ALTERNATE PARTS (U.S.A. ONLY)~~

42	1W2-14612-10	NUT, ring	1	
43	1W2-14787-10	CAP, silencer	1	

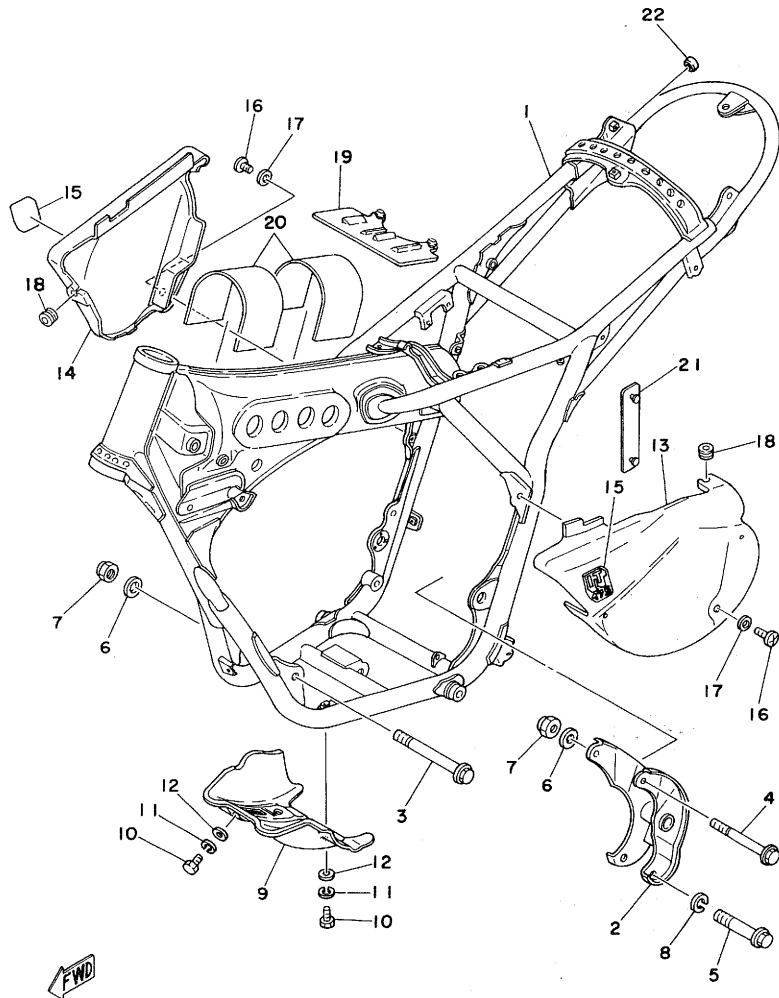
Fig. 12 C. D. I. MAGNETO



Ref.No.	Part No.	Description	Qty	Remarks
12- 1	2W6-85500-20 ✓	C.D.I. MAGNETO ASS'Y	1	
2	1W2-85550-20 ✓	. ROTOR ASS'Y	1	
3	1W2-85509-20 ✓	. BASE, magneto	1	
4	2W6-85511-20 ✓	. COIL, source 1	1	
5	2W6-85512-20 ✓	. COIL, source 2	1	
6	1W2-85513-20 ✓	. COIL, lighting	1	
7	98501-04035 ✓	. SCREW, panhead	2	
8	98501-08030 ✓	. SCREW, panhead	2	
9	92901-04100 ✓	. WASHER, spring	4	
10	1W2-85519-20 ✓	. SPACER	2	
11	2W6-85580-20 ✓	. PULSER ASS'Y	1	
12	98501-04014 ✓	. SCREW, panhead	2	
13	92901-04100 ✓	. WASHER, spring	2	
14	2W6-85515-20 ✓	. LEAD WIRE ASS'Y	1	
15	110-81345-21 ✓	. SCREW, panhead 110-81345-21	1	
16	445-81328-20 ✓	. CLAMP, lead	1	
17	92501-06015 ✓	. SCREW, panhead	2	
18	92901-06600 ✓	. WASHER, plate	2	
19	90170-12067 ✓	. NUT 90170-12067	1	
20	92901-12100 ✓	. WASHER, spring	1	
21	90201-12593 ✓	. WASHER, plate	1	

FWO

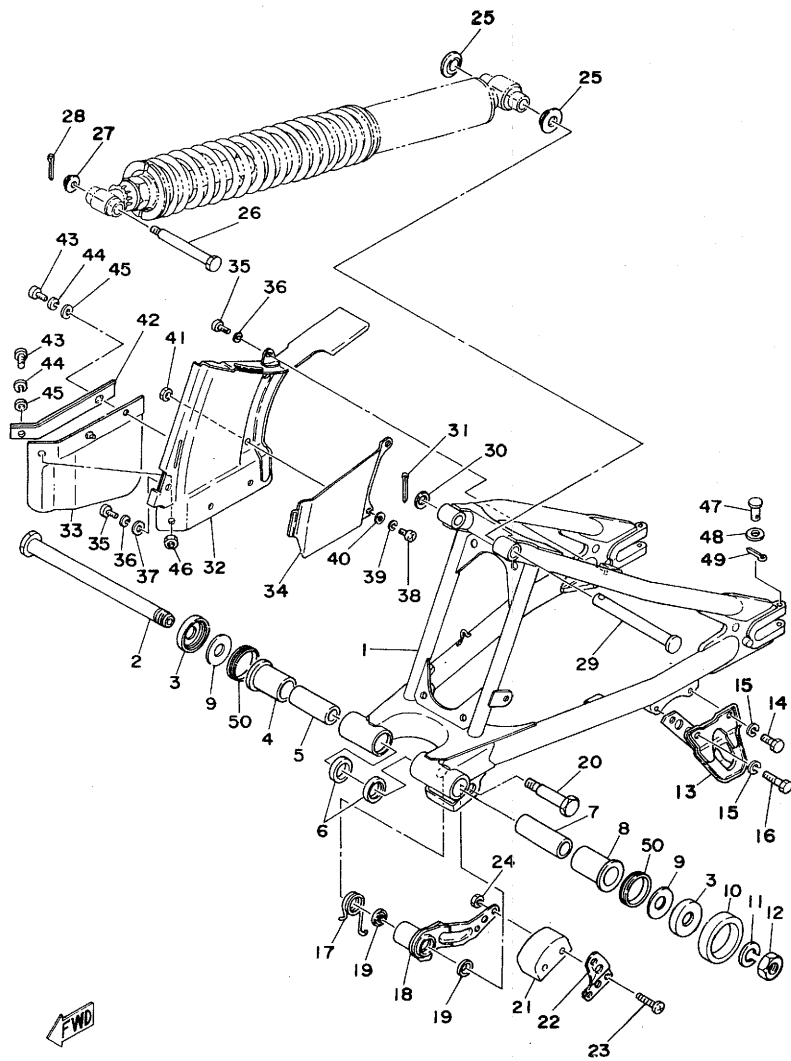
Fig. 13 FRAME · SIDE COVER



Ref.No.	Part No.	Description	Q'ty	Remarks
13- 1	2W6-21110-01-33 ✓	FRAME COMP.	1	Yamaha Black
2	1W1-21410-00 ✓	ENGINE BRACKET COMP.	1	
3	90105-08099 ✓	BOLT, flange	1	90105-08099
4	90105-08100 ✓	BOLT, flange	1	90105-08100
5	90105-10037 ✓	BOLT, flange	1	90105-10037
6	92901-08200 ✓	WASHER, plain	2	
7	90185-08054 ✓	NUT, U	2	
8	92901-10100 ✓	WASHER, spring	1	
9	2W6-21471-00 ✓	PROTECTOR, engine	1	
10	97301-08016 ✓	BOLT, hexagon	4	
11	92901-08100 ✓	WASHER, spring	4	
12	92901-08600 ✓	WASHER, plate	4	
13	1W2-21711-00 ✓	COVER, side left	1	Sky Blue/ Competition Yellow
14	1W2-21721-01 ✓	COVER, side right	1	Sky Blue/ Competition Yellow
15	2W6-14729-00 ✓	EMBLEM 175	2	
16	91903-06012 ✓	SCREW, bind	2	
17	90201-06067 ✓	WASHER, plate	2	
18	90480-12053 ✓	GROMMET	2	
19	1W1-24181-00 ✓	DAMPER, locating 1	1	
20	1W1-24183-00 ✓	DAMPER, locating 3	2	
21	537-21732-00 ✓	SEAL, side cover	2	
22	90339-12003 ✓	PLUG	2	

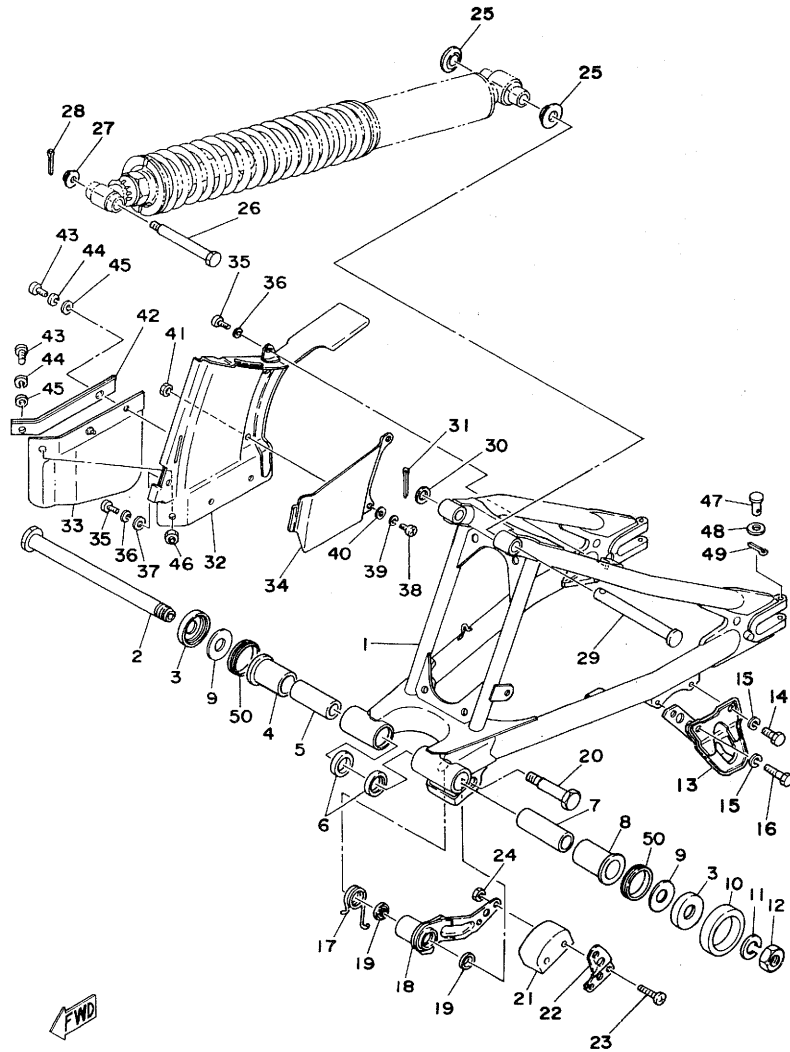
Fig. 14 REAR ARM · CHAIN CASE

~~PARTS~~ MC 78073
~~NEWS~~ DEC 1978



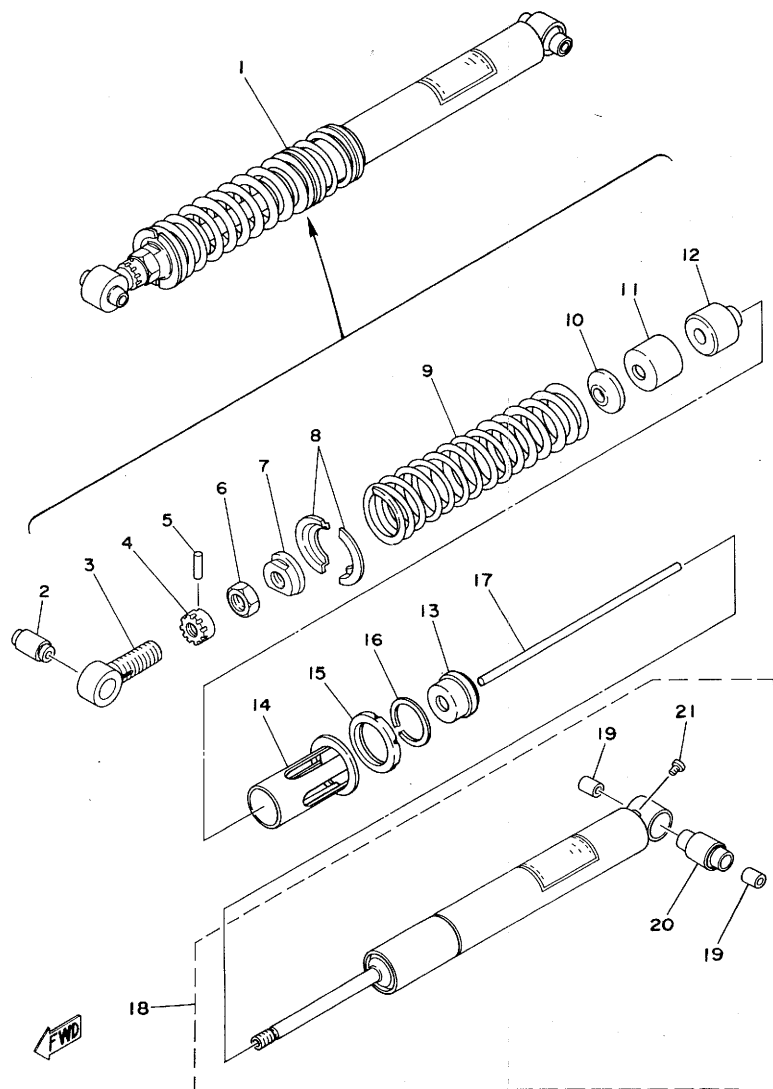
Ref.No.	Part No.	Description	Q'ty	Remarks
14- 1	2W6-22110-01-33	✓ REAR ARM COMP.	1	Yamaha Black
2	1W1-22141-00	✓ SHAFT, pivot	1	
3	2K6-22128-00	✓ COVER, thrust	2	
4	90386-22096	✓ BUSHING	1	
5	90380-16063	✓ BUSHING	1	
6	93109-22019	✓ OIL SEAL	2	
7	90380-16056	✓ BUSHING	1	
8	90386-22095	✓ BUSHING	1	
9	156-22127-00	✓ SHIM	1	UR
10	431-22151-03	✓ SEAL, guard	1	
11	92901-16100	✓ WASHER, spring	1	
12	90170-16111	✓ NUT	1	
13	2W6-22153-00	✓ GUARD, chain	1	
14	97301-06018	✓ BOLT, hexagon	1	
15	92901-06100	✓ WASHER, spring	2	
16	97301-06055	✓ BOLT, hexagon	1	
17	90508-35350	✓ SPRING, torsion	1	
18	1W1-22179-01	✓ ARM, tensioner	1	
19	93104-14044	✓ OIL SEAL (SO-14-20-3)	2	
20	90109-10483	✓ BOLT	1	
21	2N0-22178-00	✓ TENSIONER	1	
22	1W1-22187-00	✓ GUIDE, chain	1	
23	98501-05035	✓ SCREW, panhead	2	
24	95301-05700	✓ NUT, hexagon	2	
25	1W1-22128-00	✓ COVER, thrust	2	
26	90109- 10483 88532	✓ BOLT	1	
27	90179-08243	✓ NUT, U	1	
28	91401-200 70 20	✓ PIN, cotter	1	
29	90240-12060	✓ PIN, with hole	1	
30	92901-12600	✓ WASHER, plate	1	
31	91401- 30022 30030	✓ PIN, cotter	1	
32	1W2-22311-00-33	✓ CASE, chain	1	Yamaha Black
33	1W2-22313-00	✓ RUBBER, chain case	1	
34	1W2-22318-00	✓ GUARD, chain	1	
35	98501-05010	✓ SCREW, panhead	2	

Fig. 14 REAR ARM · CHAIN CASE



Ref.No.	Part No.	Description	Q'ty	Remarks
14-36	92901-05100 ✓	WASHER, spring	2	
37	92901-05200 ✓	WASHER, plate	2	
38	98501-05010 ✓	SCREW, panhead	2	
39	92901-05100 ✓	WASHER, spring	2	
40	92901-05200 ✓	WASHER, plain	2	
41	95601-05100 ✓	NUT, U	2	
42	1W2-22347-00 ✓	PLATE 1	1	
43	98501-05012 ✓	SCREW, panhead	2	
44	92901-05100 ✓	WASHER, spring	2	
45	92901-05600 ✓	WASHER, plate	2	
46	95601-05100 ✓	NUT, U	1	
47	91701-06042 ✓	PIN, clevis	2	
48	92901-06600 ✓	WASHER, plate	2	
49	91401-200 ²⁰ ✓	PIN, cotter	2	
50	93108-35004 ✓	OIL SEAL (OSO-35-41.5-8)	2	

Fig. 15 REAR CUSHION

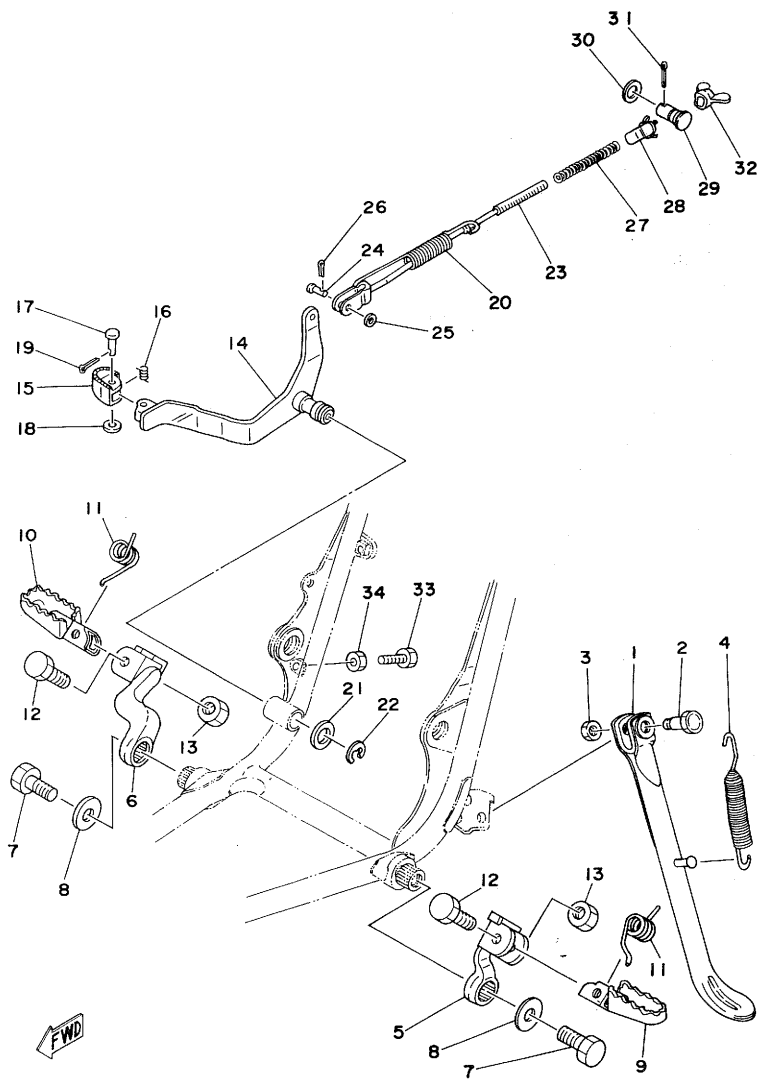


Ref.No.	Part No.	Description	Q'ty	Remarks
15- 1	2W6-22210-00 ✓	REAR CUSHION ASS'Y	1	
2	1W1-22216-00 ✓	BUSHING, upper bracket	1	
3	1W1-22219-00 ✓	BRACKET, upper	1	
4	1W1-22497-00 ✓	NUT, adjusting	1	
5	93604-26132 ✓	PIN, dowel	1	
6	90170-20213 ✓	NUT, hexagon	1	
7	2K6-22213-00 ✓	SEAT, spring upper	1	
8	2K6-22214-00 ✓	GUIDE, spring upper	2	
9	90501-98538 ✓	SPRING, compression (K ₁ =2.63kg/mm K ₂ =4.04kg/mm)	1	
10	2W6-22228-00 ✓	SUPPORT, bump stop	1	
11	2W6-22221-00 ✓	COVER, bump stop	1	
12	2W6-22493-00 ✓	BUMPER, stop	1	
13	1W1-22472-00 ✓	CAP, case	1	
14	1W1-22224-00 ✓	GUIDE, spring lower	1	
15	1W1-22223-00 ✓	SEAT, spring under	1	
16	93440-50058 ✓	CIRCLIP	1	
17	2W6-22489-00 ✓	ROD, push	1	
18	2W6-22401-00 ✓	DAMPER SUB ASS'Y	1	
19	90380-12051 ✓	BUSHING, solid	2	
20	1W1-22226-00 ✓	BUSHING, lower	1	
21	98501-04005 ✓	SCREW, panhead	1	

ALTERNATE PARTS

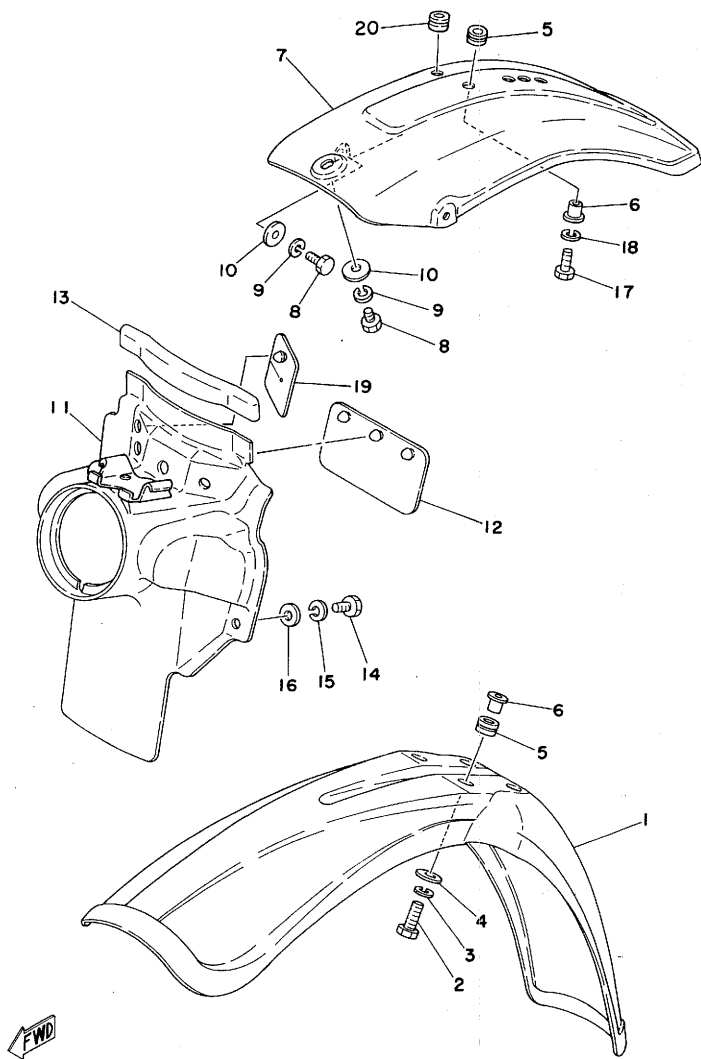
9	90501-95550 ✓	SPRING, compression (K ₁ =2.39kg/mm K ₂ =3.66kg/mm)	1	Soft (Painted Yellow)
	90501-99539 ✓	SPRING, compression (K ₁ =2.86kg/mm K ₂ =4.92kg/mm)	1	Hard (Painted Blue)

Fig.16 STAND · FOOTREST · BRAKE PEDAL



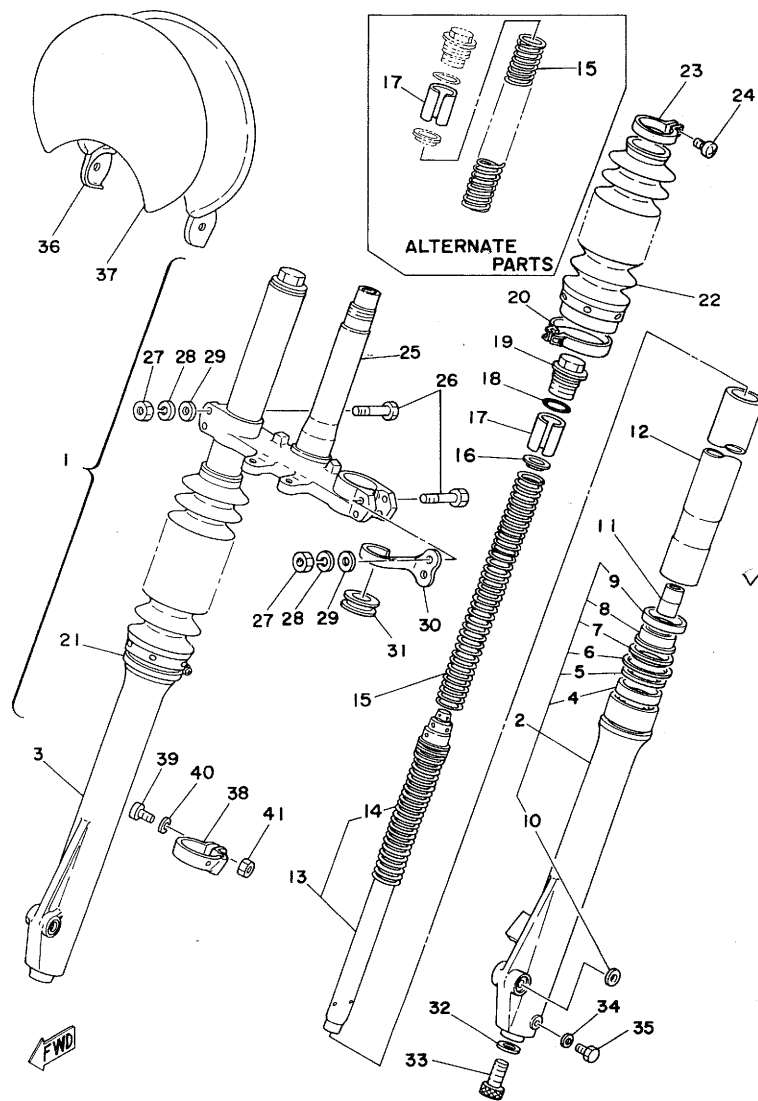
Ref.No.	Part No.	Description	Q'ty	Remarks
16- 1	1W2-27311-01 ✓	STAND, side	1	
2	90109-10473 ✓	BOLT	1	
3	95301-10700 ✓	NUT, hexagon	1	
4	90507-29008 ✓	SPRING, torsion	1	
5	2W6-27412-00 ✓	BRACKET, footrest left	1	
6	2W6-27422-00 ✓	BRACKET, footrest right	1	
7	97311-10016 ✓	BOLT, hexagon	2	
8	90201-10639 ✓	WASHER, plate	2	
9	2W6-27411-00 ✓	FOOTREST, left	1	
10	2W6-27421-00 ✓	FOOTREST, right	1	
11	90508-20023 ✓	SPRING, torsion (2W6-27426-00)	2	
12	90101-08428 ✓	BOLT	2	
13	95601-08100 ✓	NUT, U	2	
14	2W6-27211-00-33 ✓	ARM, brake pedal	1	Yamaha Black
15	1W2-27242-00 ✓	PEDAL, brake	1	
16	90508-14352 ✓	SPRING, torsion	1	
17	91701-06022 ✓	PIN, clevis	1	
18	92901-06600 ✓	WASHER, plate	1	
19	91401-200 ^{2.0} ✓	PIN, cotter	1	
20	90506-20140 ✓	SPRING, tension	1	
21	90201-14212 ✓	WASHER, plate (611-244126-00)	1	
22	93430-10015 ✓	CIRCLIP (10)	1	
23	2K5-27231-00 ✓	ROD, brake	1	
24	90240-06040 ✓	PIN, with hole	1	
25	92901-06200 ✓	WASHER, plain	1	
26	91401-200 ^{2.0} ✓	PIN, cotter	1	
27	90501-10245 ✓	SPRING (180-27236-00)	1	
28	1W2-27239-00 ✓	SEAT, spring	1	
29	1W2-27237-00 ✓	PIN, brake pedal	1	
30	90201-12631 ✓	WASHER, plate	1	
31	91401-250 ^{2.5} ✓	PIN, cotter	1	
32	90175-06013 ✓	NUT, wing	1	
33	97301-06020 ✓	BOLT, hexagon	1	
34	95301-06700 ✓	NUT, hexagon	1	

Fig. 17 FRONT FENDER · REAR FENDER



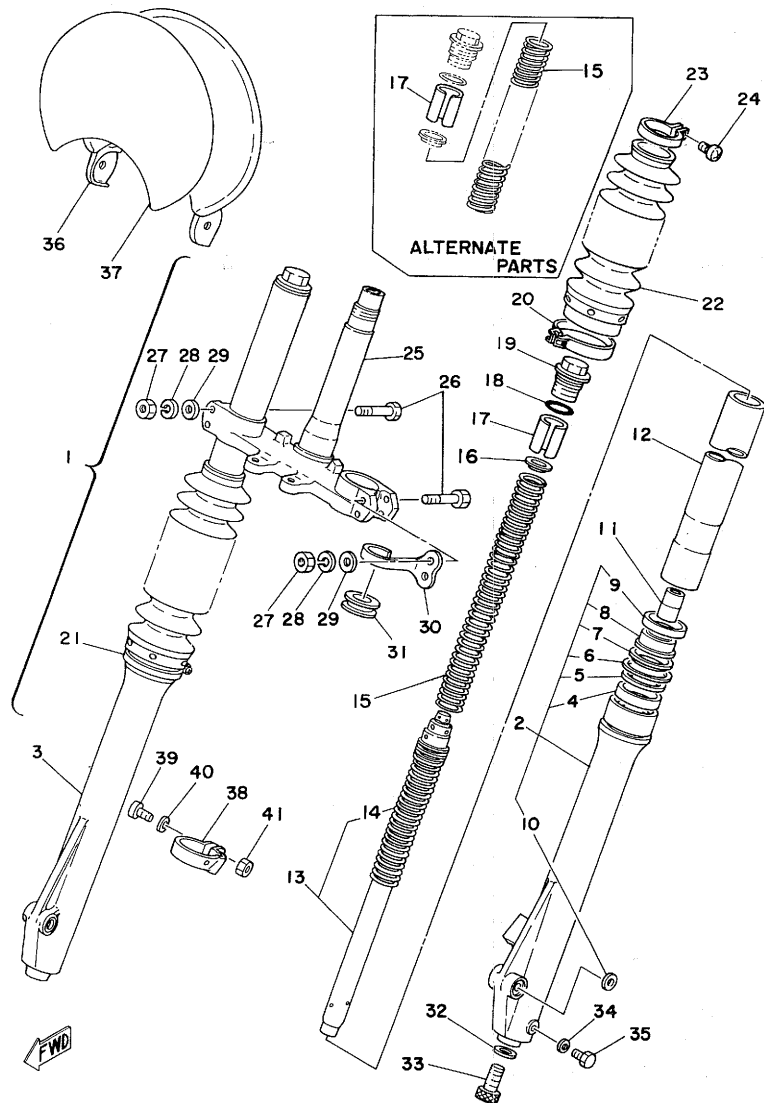
Ref.No.	Part No.	Description	Q'ty	Remarks
17- 1	1W2-21511-00 ✓	FENDER, front	1	Sky Blue
2	97301-06025 ✓	BOLT, hexagon	4	
3	92901-06100 ✓	WASHER, spring	4	
4	90201-06067 ✓	WASHER, plate	4	
5	90480-14198 ✓	GROMMET	5	
6	90387-07391 ✓	COLLAR 90387-07391-001	5	
7	1W2-21611-00 ✓	FENDER, rear	1	Sky Blue
8	97301-06014 ✓	BOLT, hexagon	2	
9	92901-06100 ✓	WASHER, spring	2	
10	90201-06067 ✓	WASHER, plate	2	
11	2W6-21620-00 ✓	MUD GUARD COMP.	1	
12	1M1-21621-00 ✓	FLAP	1	
13	565-21746-00 ✓	DAMPER	1	
14	97301-06014 ✓	BOLT, hexagon	2	
15	92901-06100 ✓	WASHER, spring	2	
16	90201-06067 ✓	WASHER, plate	2	
17	97301-06025 ✓	BOLT, hexagon	1	
18	92901-06100 ✓	WASHER, spring	1	
19	1W2-21621-00 ✓	FLAP	1	
20	90480-15058 ✓	GROMMET	1	

Fig. 18 FRONT FORK



Ref.No.	Part No.	Description	Qty	Remarks
18- 1	2W6-23101-00 ✓	FRONT FORK ASS'Y	1	
2	2W6-23126-00 ✓	. TUBE, outer left	1	
3	2W6-23136-00 ✓	. TUBE, outer right	1	
4	1W1-23145-L0 ✓	. OIL SEAL	2	
5	509-23146-L0 ✓	. WASHER	2	
6	1W1-23156-L0 ✓	. RING, snap	2	
7	1W1-23153-L0 ✓	. GUIDE, snap ring	2	
8	2W6-23144-00 ✓	. SEAL, dust	2	
9	1W1-23148-L0 ✓	. CASE, dust seal	2	
10	1W1-23168-L0 ✓	. WASHER	2	
11	1W1-23173-L0 ✓	. SPINDLE	2	
12	2W6-23110-00 ✓	. TUBE, inner	2	
13	2W6-23170-00 ✓	. CYLINDER COMP., front fork	2	
14	1G8-23151-L0 ✓	. SPRING, rebound	2	
15	2W6-23141-00 ✓	. SPRING, front fork (K ₁ =0.299 kg/mm, K ₂ =0.447 kg/mm)	2	
16	583-23142-00 ✓	. SEAT, spring upper	2	
17	2W6-23118-00 ✓	. SPACER (276-2301)	2	
18	240-23114-00 ✓	. O-RING	2	
19	2W6-23111-00 ✓	. CAP	2	
20	1W1-23318-L0 ✓	. HOLDER, wire	1	
21	509-23489-L0 ✓	. BOOT BAND COMP.	1	
22	2N6-23191-00 ✓	. BOOT	2	
23	341-92090-60 ✓	. BAND, boot	2	
24	509-23194-L0 ✓	. SCREW	2	
25	2X7-23340-00-33 ✓	. UNDER BRACKET COMP.	1	Yamaha Black
26	90109-08397 ✓	. BOLT	4	
27	95311-08600 ✓	. NUT, hexagon	4	
28	92901-08100 ✓	. WASHER, spring	4	
29	90201-08544 ✓	. WASHER, plate	4	
30	1W1-23317-01 ✓	. HOLDER, wire	1	
31	1W1-23389-00 ✓	. GUIDE, wire	1	
32	509-23158-L0 ✓	. PACKING	2	
33	1T3-23181-50 ✓	. BOLT	2	
34	122-23129-00 ✓	. GASKET, drain plug	2	

Fig. 18 FRONT FORK

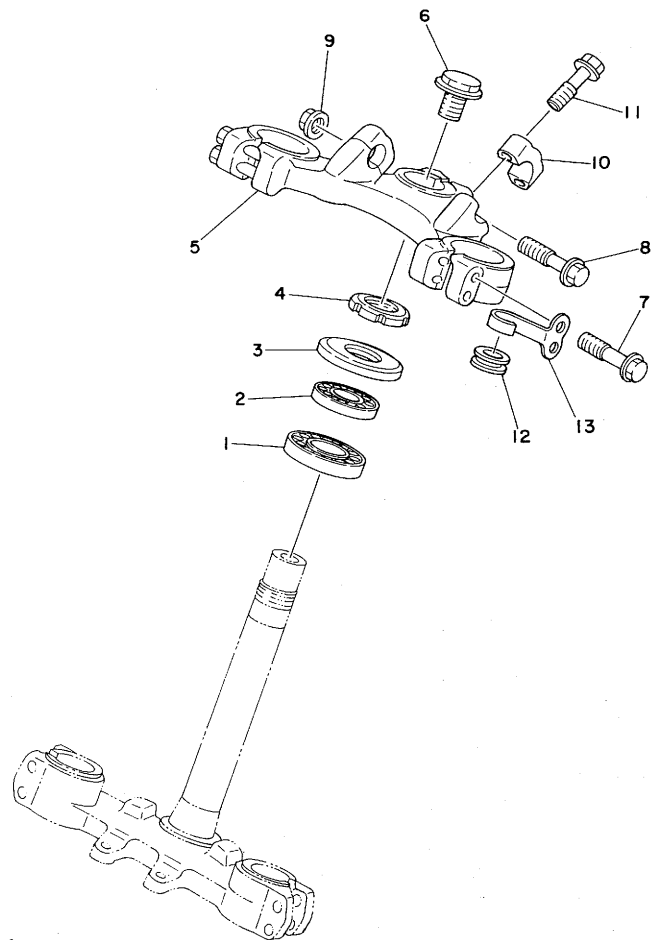


Ref.No.	Part No.	Description	Q'ty	Remarks
18-35	122-23119-01 ✓	. PLUG, drain	2	
36	1W2-23485-00 ✓	PLATE, number	1	
37	1W2-23395-00 ✓	EMBLEM	1	
38	1W2-23318-00 ✓	HOLDER, wire	1	
39	98501-05018 ✓	SCREW, panhead	1	
40	92901-05600 ✓	WASHER, plate	1	
41	95301-05600 ✓	NUT, hexagon	1	

ALTERNATE PARTS

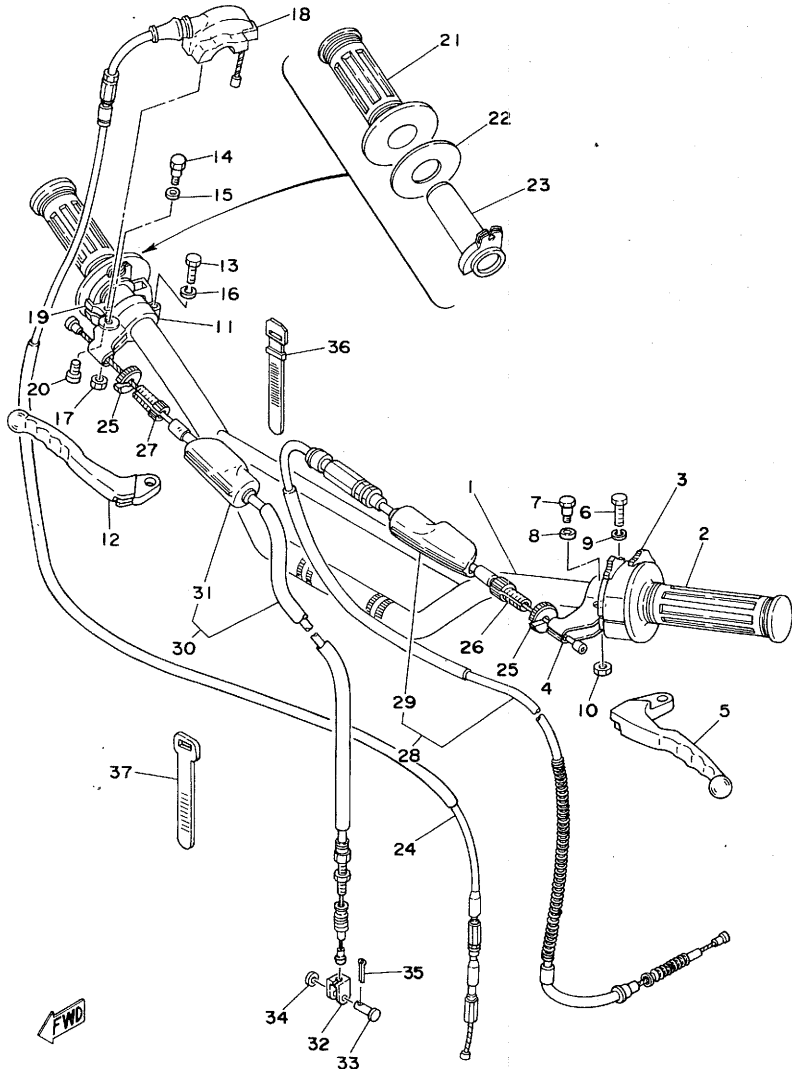
15	2W6-23141-10 ✓	SPRING, front fork ($K_1=0.264\text{kg/mm}$, $K_2=0.366\text{kg/mm}$)	2	Soft (Use spacer 2W6-23118-00 with set)
	2W6-23141-20 ✓	SPRING, front fork ($K_1=0.335\text{kg/mm}$, $K_2=0.522\text{kg/mm}$)	2	Hard (Use spacer 1W6-23118-10 with set)
17	1W6-23118-10 ✓	SPACER (27.530E)	2	

Fig. 19 STEERING



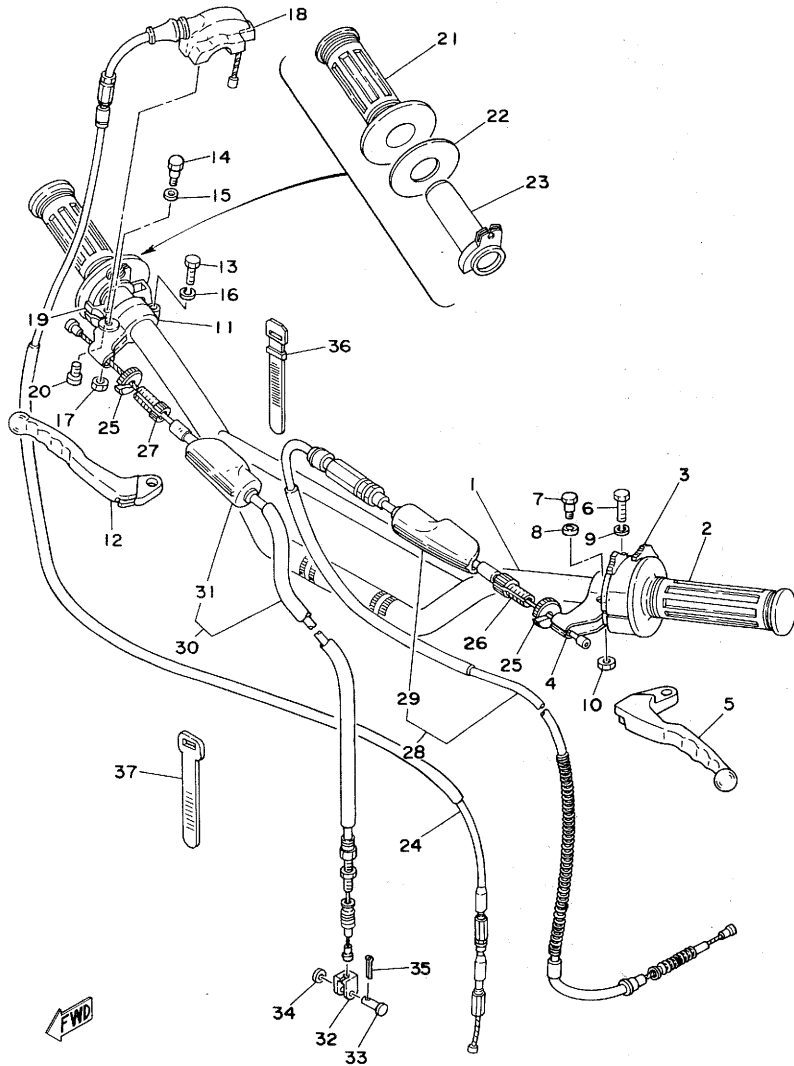
Ref.No.	Part No.	Description	Q'ty	Remarks
19- 1	93332-00008 ✓	BEARING	1	
2	93332-00001 ✓	BEARING	1	
3	1W1-23416-00 ✓	COVER, ball race	1	
4	90179-25033 ✓	NUT (#37-23454-00)	1	
5	1W1-23435-01-98 ✓	CROWN, handle	1	Low Gloss Black
6	90105-14060 ✓	BOLT	1	
7	95821-08040 ✓	BOLT, flange	4	
8	95821-08055 ✓	BOLT, flange	1	
9	95701-08100 ✓	NUT, flange	1	
10	1E6-23441-00 ✓	HOLDER, handle upper	2	
11	95821-08035 ✓	BOLT, flange	4	
12	1W1-23389-00 ✓	GUIDE, wire	1	
13	1W1-23317-01 ✓	HOLDER, wire	1	

Fig. 20 HANDLE · WIRE



Ref.No.	Part No.	Description	Q'ty	Remarks
20-	1	1W1-26111-02 ✓ HANDLE	1	
	2	1E6-26241-00 ✓ GRIP, left	1	
	3	1W2-83973-00-98 ✓ SWITCH, handle 3	1	Low Gloss Black
	4	461-82911-00 ✓ HOLDER, lever left	1	Low Gloss Black
	5	2K6-83912-00 ✓ LEVER, left	1	
	6	97301-06022 ✓ BOLT, hexagon	1	
	7	90109-06410 ✓ BOLT	1	
	8	90201-08083 ✓ WASHER, plate (156-27226-00)	1	
	9	92901-06100 ✓ WASHER, spring	1	
	10	95601-06100 ✓ NUT, U	1	
	11	516-82921-30 ✓ HOLDER, lever right	1	Low Gloss Black
	12	2K6-83922-00 ✓ LEVER, right	1	
	13	97301-06022 ✓ BOLT, hexagon	1	
	14	90109-06410 ✓ BOLT	1	
	15	90201-08083 ✓ WASHER, plate (156-27226-00)	1	
	16	92901-06100 ✓ WASHER, spring	1	
	17	95601-06100 ✓ NUT, U	1	
	18	322-26281-00-98 ✓ CAP, grip upper	1	
	19	322-26282-00 ✓ CAP, grip under	1	
	20	98503-05015 ✓ SCREW, panhead	2	
	21	583-26242-00 ✓ GRIP, right	1	
	22	1W1-26249-00 ✓ RING, leaf	1	
	23	322-26243-00 ✓ TUBE, guide	1	
	24	1W2-26311-02 ✓ WIRE, throttle 1 (1170mm)	1	
	25	90179-08148 ✓ NUT (156-26346-00)	2	
	26	90123-08013 ✓ BOLT, wire adjusting (156-26346-00)	1	
	27	90123-08046 ✓ BOLT, wire adjusting	1	
	28	1W1-26335-00 ✓ WIRE, clutch	1	
	29	382-26372-01 ✓ . COVER, lever	1	
	30	1W1-26341-01 ✓ WIRE, brake front (1180mm)	1	
	31	382-26372-01 ✓ . COVER, lever	1	
	32	156-26347-00 ✓ JOINT, wire	1	
	33	90240-08012 ✓ PIN, with hole (156-27229-00)	1	
	34	90201-08083 ✓ WASHER, plate (156-27226-00)	1	
	35	91401-200 ²⁰ ✓ PIN, cotter	1	

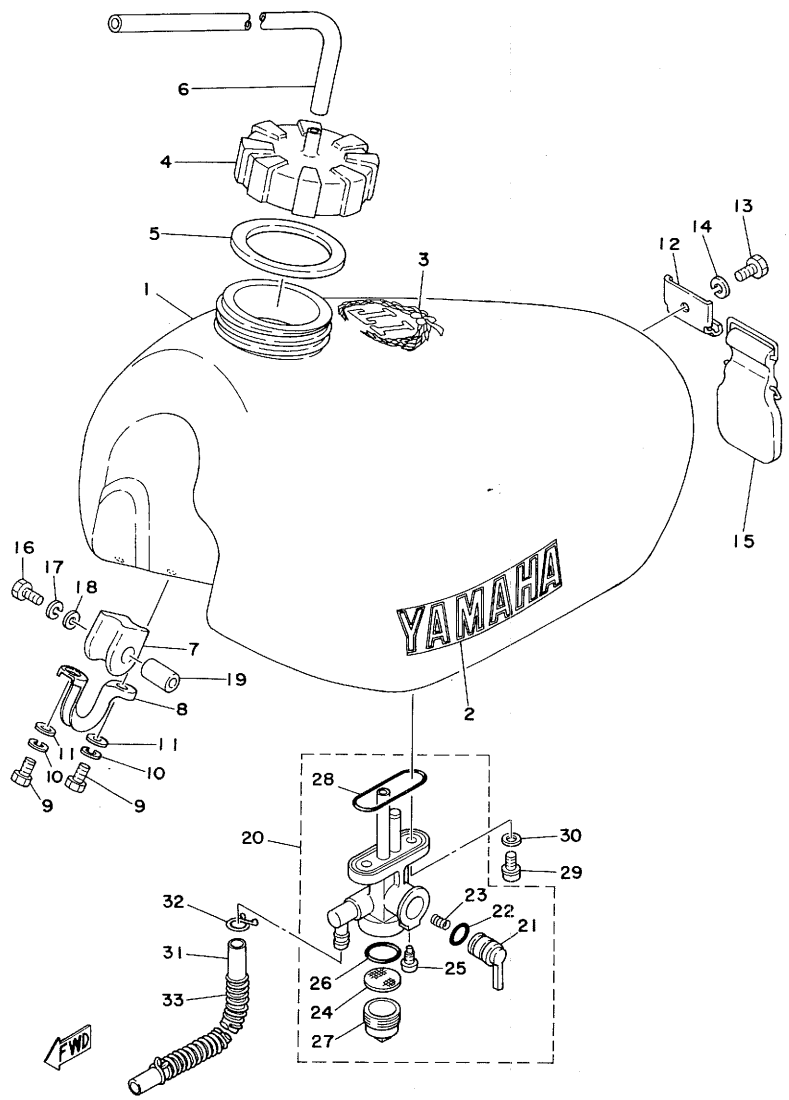
Fig. 20 HANDLE · WIRE



Ref.No.	Part No.	Description	Qty	Remarks
20-36	437-83936-10 ✓	BAND, switch cord	1	
37	437-83936-00 ✓	BAND, switch cord	6	

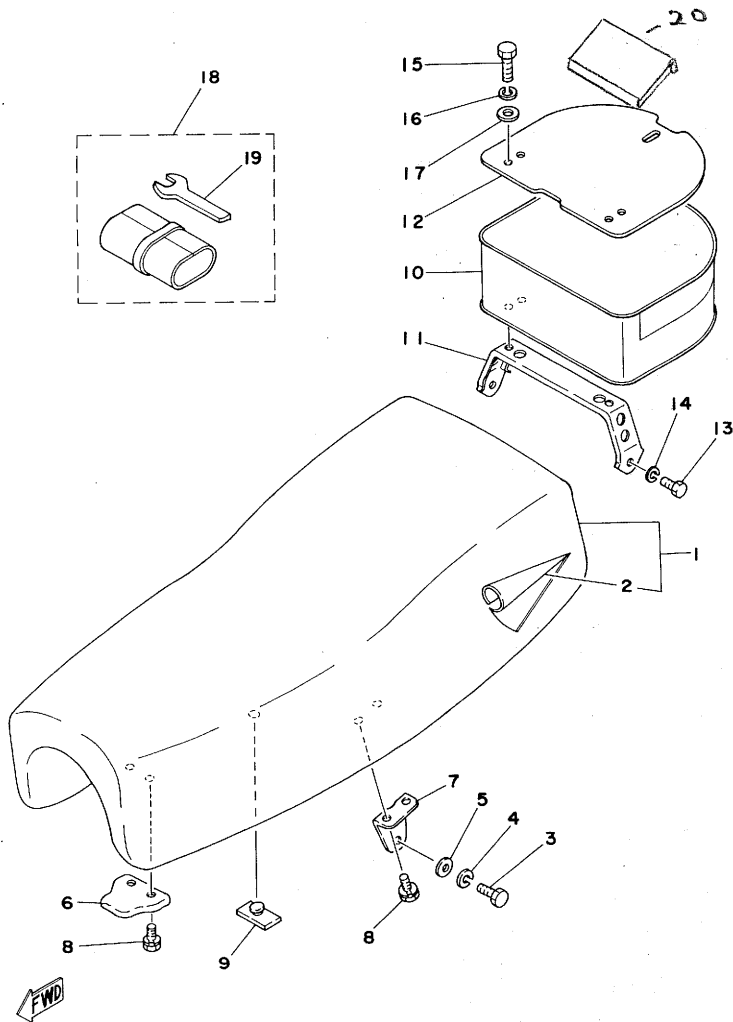
MC 78073
DEC 78

Fig. 21 FUEL TANK



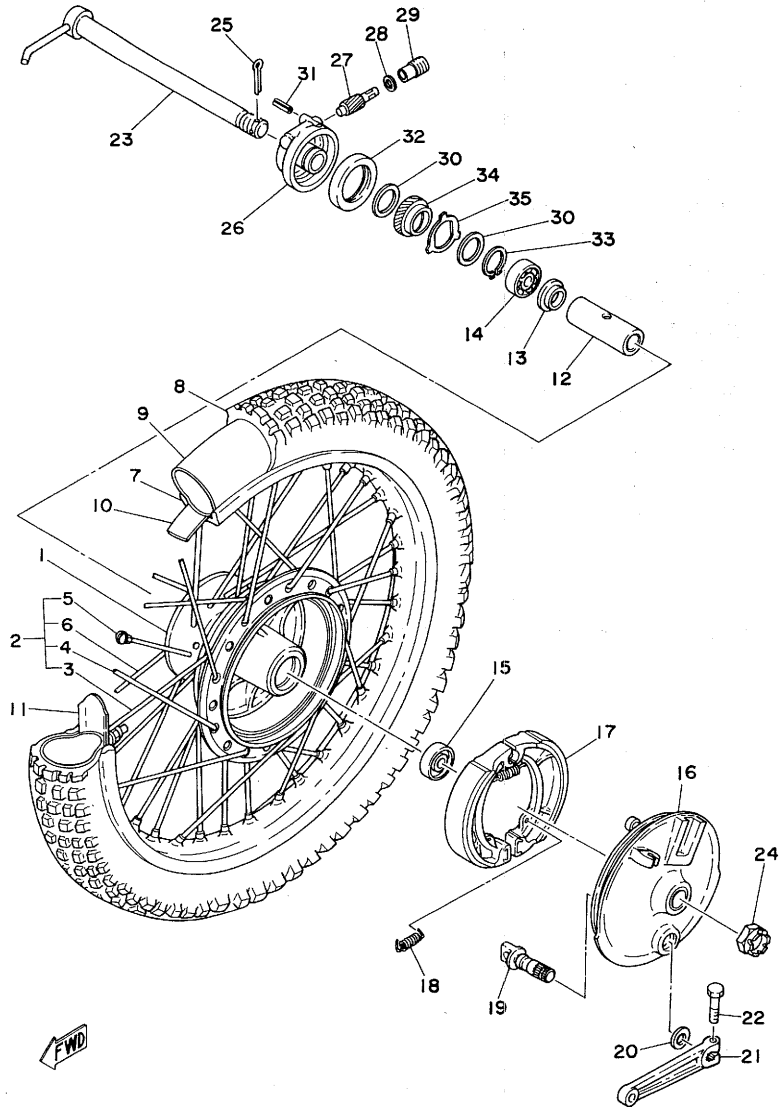
Ref.No.	Part No.	Description	Q'ty	Remarks
21-	1	1W2-24110-00 ✓ FUEL TANK COMP.	1	Sky Blue
	2	2W6-24161-00 ✓ EMBLEM, 1	2	
	3	1W2-24162-00 ✓ EMBLEM, 2	1	
	4	1K7-24611-01 ✓ BODY, cap	1	
	5	1K7-24612-02 ✓ PACKING, cap	1	
	6	90445-09117 ✓ HOSE (170-24766-00 178-14766-00)	1	
	7	1W1-24182-01 ✓ DAMPER, locating 2	2	
	8	1W1-24144-01 ✓ HOLDER, damper	2	
	9	97301-06012 ✓ BOLT, hexagon	4	
	10	92901-06100 ✓ WASHER, spring	4	
	11	92901-06600 ✓ WASHER, plate	4	
	12	1W2-24192-00 ✓ BRACKET, fuel tank	1	
	13	97301-06012 ✓ BOLT, hexagon	1	
	14	92901-06100 ✓ WASHER, spring	1	
	15	1W1-24173-00 ✓ BAND, tank fitting 1	1	
	16	97321-06035 ✓ BOLT, hexagon	2	
	17	92901-06100 ✓ WASHER, spring	2	
	18	90201-06407 ✓ WASHER, plate	2	
	19	90387-07393 ✓ COLLAR (308-89457-00)	2	
	20	2W6-24500-00 ✓ FUEL COCK ASS'Y	1	
	21	2W6-24524-00 ✓ . LEVER, cock	1	
	22	2N3-24528-00 ✓ . WASHER, fuel cock lever	1	
	23	2W6-24529-00 ✓ . SPRING	1	
	24	2W6-24561-00 ✓ . NET, filter	1	
	25	2N3-24535-00 ✓ . SCREW, panhead	1	
	26	357-24522-10 ✓ . O-RING	1	
	27	357-24521-10 ✓ . CUP, filter	1	
	28	2W6-24512-00 ✓ . O-RING	1	
	29	90149-06011 ✓ SCREW (266-24143-00)	2	
	30	90202-06010 ✓ WASHER, plate (178-14766-00)	2	
	31	90445-11356 ✓ HOSE (172-236)	1	
	32	90467-10008 ✓ CLIP (143-24356-00)	2	
	33	90501-08486 ✓ SPRING, compression	1	

Fig. 22 SEAT



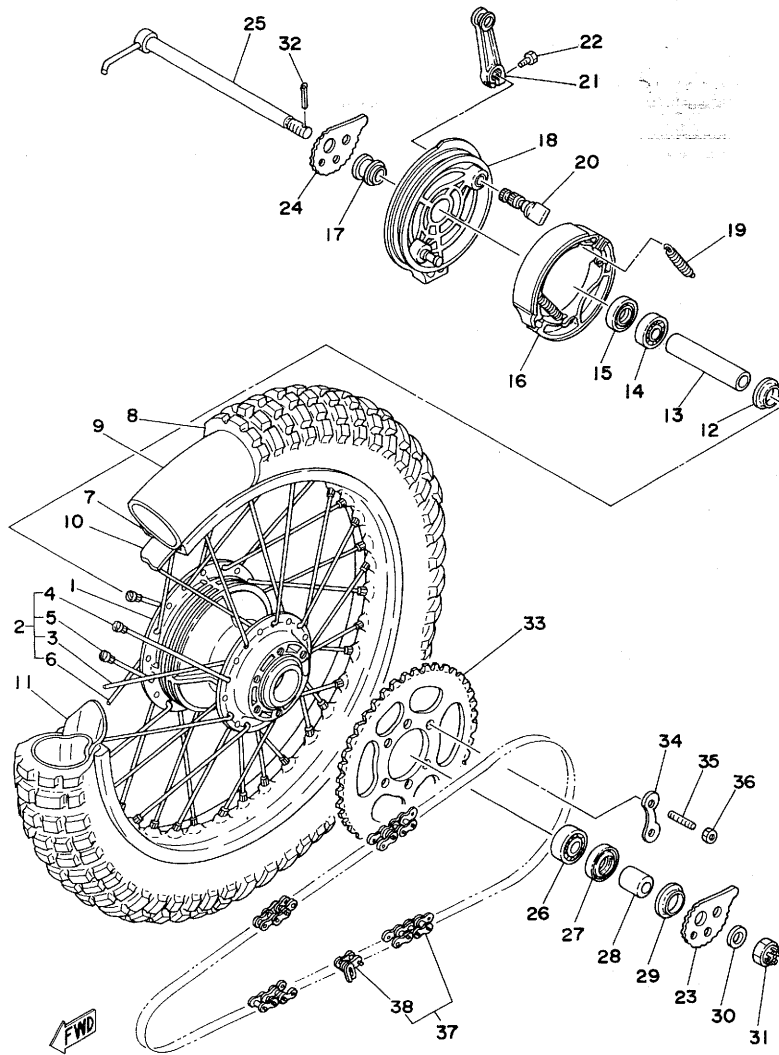
Ref.No.	Part No.	Description	Q'ty	Remarks
22- 1	2W6-24770-90 ✓	SEMI DOUBLE SEAT ASS'Y	1	
2	2W6-24771-00 ✓	. COVER, seat	1	
3	97301-06014 ✓	BOLT, hexagon	2	
4	92901-06100 ✓	WASHER, spring	2	
5	92901-06600 ✓	WASHER, plate	2	
6	1M1-24748-00 ✓	BRACKET, front	1	
7	509-24738-01 ✓	BRACKET, seat rear	2	
8	90101-06304 ✓	BOLT, hexagon head with washer	6	
9	509-24724-00 ✓	DAMPER, seat	6	
10	1W2-24850-00 ✓	CARRIER BOX ASS'Y	1	
11	1W2-24832-00 ✓	BRACKET, carrier 1	1	
12	1W2-24833-00 ✓	BRACKET, carrier 2	1	
13	97301-06014 ✓	BOLT, hexagon	2	
14	92901-06100 ✓	WASHER, spring	2	
15	97301-06018 ✓	BOLT, hexagon	3	
16	92901-06100 ✓	WASHER, spring	3	
17	90201-06067 ✓	WASHER, plate	3	
18	1W2-28100-10 ✓	TOOL ASS'Y	1	
19	1W1-28135-00 ✓	. SPANNER, special	1	
20	1W2-24854-00 ✓	DAMPER	1	

Fig. 23 FRONT WHEEL



Ref.No.	Part No.	Description	Q'ty	Remarks
23- 1	1K7-25111-10-98 ✓	HUB, front	1	Low Gloss Black
2	2W6-25104-00 ✓	SPOKE SET	1	
3	93306-25103-00 NOT FOR SALE	. SPOKE SET, inner left (6202)	1	
4	93306-25104-00 NOT FOR SALE	. SPOKE SET, outer left (6202)	1	
5	2W6-25103-00 NOT FOR SALE	. SPOKE SET, inner right (6202)	1	
6	93306-25104-00 NOT FOR SALE	. SPOKE SET, outer right (6202)	1	
7	94416- 21024 ²¹²³⁴ ✓	RIM, front (6202)	1	
8	94327-21024 ^{300x21} ✓	TYRE, front (6202)	1	
9	94327-21024 ^{300x21} ✓	TUBE, front (6202)	1	
10	94327-21024 ^{300x21} ✓	BAND, rim (6202)	1	
11	1T1-25194-00 ✓	SPACER, bead (6202)	1	
12	90560-15116 ✓	SPACER (322-25117-00)	1	
13	146-25116-00 ✓	FLANGE, spacer	1	
14	93306-25103-00 ⁶²⁰² ✓	BEARING (6202)	1	
15	93306-25103-00 ^{6202 RS} ✓	BEARING (6202 RS)	1	
16	1W1-25121-01-98 ✓	PLATE, brake shoe	1	Low Gloss Black
17	322-25130-00 ✓	BRAKE SHOE COMP.	2	
18	90506-16036 ✓	SPRING, tension (322-25333-00)	2	
19	322-25151-00 ✓	CAMSHAFT	1	
20	137-25159-00 ✓	SEAL, camshaft	1	
21	322-25155-00 ✓	LEVER, camshaft	1	
22	90101-06291 ✓	BOLT	1	
23	1W2-25181-00 ✓	SHAFT, wheel	1	
24	90171-14020 ✓	NUT, castle	1	
25	91401-30030 ✓	PIN, cotter	1	
26	1W2-25191-00 ✓	HOUSING, gear unit	1	
27	1W2-25138-00 ✓	GEAR, meter	1	
28	102-18416-00 ✓	SHIM (622-9-5-0-8)	1	
29	306-25136-00 ✓	BUSHING	1	
30	90201-22283 ✓	WASHER, plate (214-25147-00)	2	
31	91609-20014 ✓	PIN, spring	1	
32	93105-40020 ✓	OIL SEAL (SDD-40-62-9)	1	
33	93410-22014 ✓	CIRCLIP (6-22)	1	
34	1W2-25135-00 ✓	GEAR, drive	1	
35	1K7-25149-00 ✓	CLUTCH, meter	1	

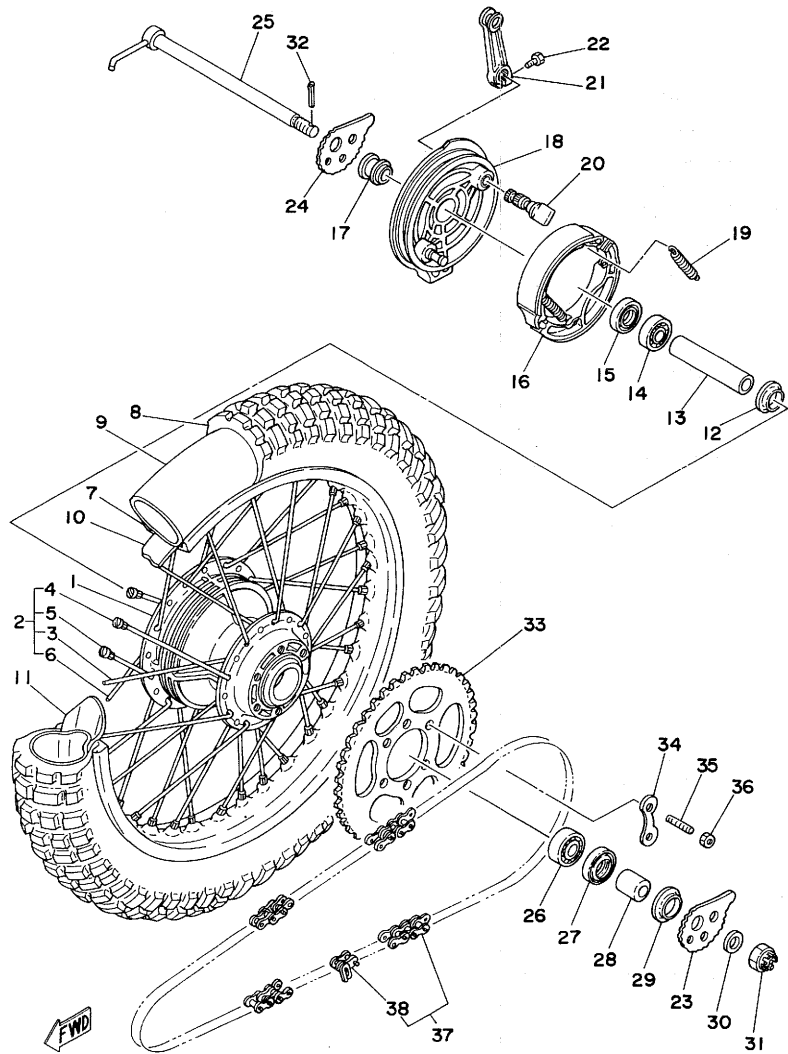
Fig. 24 REAR WHEEL



Ref.No.	Part No.	Description	Q'ty	Remarks
24-1	1W1-25311-00-98 ✓	HUB, rear	1	Low Gloss Black
2	537-25304-00 ✓ NOT FOR SALE	SPOKE SET	1	
3	NOT FOR SALE	SPOKE SET, inner left (537-25304-00)	1	
4	NOT FOR SALE	SPOKE SET, outer left (537-25304-00)	1	
5	NOT FOR SALE	SPOKE SET, inner right (537-25304-00)	1	
6	NOT FOR SALE	SPOKE SET, outer right (537-25304-00)	1	
7	94418-18141 ✓ 410x18	RIM, rear (1-85-18)	1	
8	325x18	TYRE, rear (410x18)	1	
9	18043	TUBE, rear (325x18)	1	
10	94325- 10001	BAND, rim (42-50-18)	1	
11	537-25394-00 ✓	SPACER, bead	2	
12	148-25115-00 ✓	FLANGE, spacer	1	
13	248-25317-00 ✓ 62022	SPACER, bearing	1	
14	62022	BEARING (62022)	1	
15	93104-22018 ✓	OIL SEAL (SO-22-35-5)	1	
16	437-25330-00 ✓	BRAKE SHOE COMP.	2	
17	90387-15623 ✓	COLLAR	1	
18	1W2-25321-02-98 ✓	PLATE, brake shoe	1	Low Gloss Black
19	90506-16036 ✓ 183-25333-00	SPRING, tension (183-25333-00)	2	
20	2A6-25351-01 ✓	CAMSHAFT	1	
21	431-25355-00 ✓	LEVER, camshaft	1	
22	90101-06291 ✓	BOLT	1	
23	1W2-25388-01 ✓	PULLER, chain left	1	
24	1W2-25389-01 ✓	PULLER, chain right	1	
25	1W2-25381-00 ✓	SHAFT, wheel	1	
26	63022	BEARING (63022)	1	
27	93106-26005 ✓	OIL SEAL (DD-26-42-8)	1	
28	90387-15524 ✓ 18-26-22	COLLAR (18-26-22)	1	
29	401-25367-00 ✓	COVER, dust	1	
30	90201-15238 ✓	WASHER, plate	1	
31	90171-14020 ✓	NUT, castle	1	
32	91401-30030 ✓	PIN, cotter	1	
33	1W2-25439-00 ✓	GEAR, sprocket wheel (39T)	1	u.r.
	1W2-25441-00 ✓	GEAR, sprocket wheel (41T)	1	u.r. STD
	1W2-25443-00 ✓	GEAR, sprocket wheel (43T)	1	u.r.

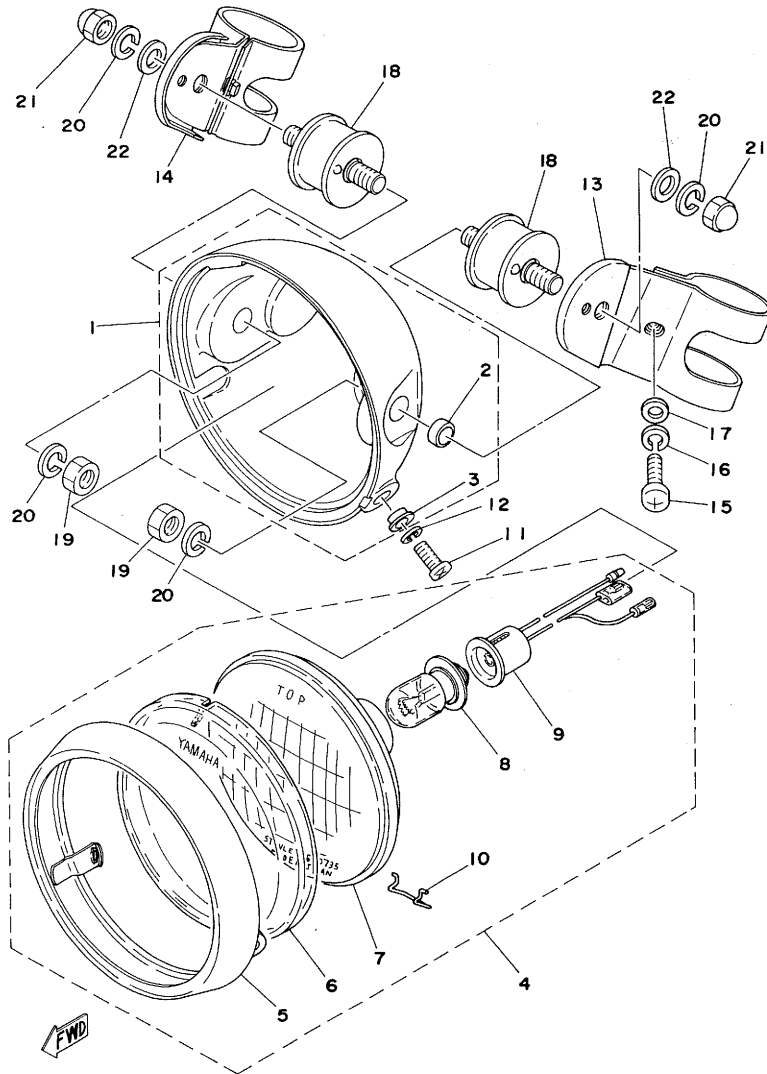
Fig. 24 REAR WHEEL

PARTS
NEWS
MC. 78073
DEC. 78



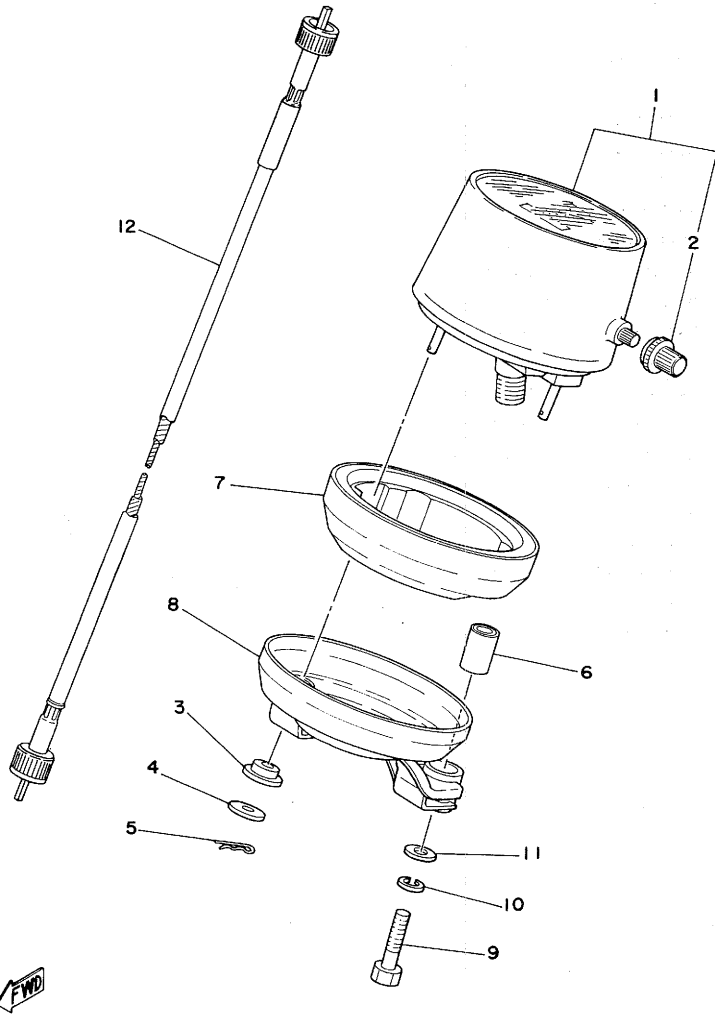
Ref.No.	Part No.	Description	Q'ty	Remarks
24-34	1G8-25412-00 ✓	WASHER, lock	3	
35	90116-10221 ✓	BOLT, stud	6	
36	90170-10219 ✓	NUT	6	
37	90150-11000 520 x 96 ✓	CHAIN 520 x 96 (5/8 x 1/4 x 96 L)	1	
38	90680-11001 520 ✓	JOINT, chain	1	

Fig. 25 HEAD LAMP



Ref.No.	Part No.	Description	Qty	Remarks
25- 1	1W2-84130-60-33	✓ HEAD LAMP BODY ASS'Y	1	Yamaha Black
2	1W2-84145-60	✓ . COLLAR, body fitting	2	
3	1L9-84338-60	✓ . COLLAR, screw	2	
4	1W2-84110-60	✓ HEAD LAMP UNIT ASS'Y	1	
5	1W2-84115-60	✓ . RIM, head lamp	1	
6	1W2-84144-60	✓ . COVER, head lamp	1	
7	1W2-84120-60	✓ . LENS ASS'Y	1	
8	206-84114-60	✓ . BULB, head lamp (6V-25/25W)	1	
9	1W2-84112-60	✓ . SOCKET CORD ASS'Y	1	
10	1W2-84324-60	✓ . SPRING, reflector set	4	
11	98503-05015	✓ SCREW, panhead	1	
12	92901-05100	✓ WASHER, spring	1	
13	1W2-84118-00-33	✓ STAY, head lamp left	1	Yamaha Black
14	1W2-84119-00-33	✓ STAY, head lamp right	1	Yamaha Black
15	92501-06020	✓ SCREW, panhead	2	
16	92901-06100	✓ WASHER, spring	2	
17	92901-06600	✓ WASHER, plate	2	
18	1W2-84143-00	✓ DAMPER, head lamp stay	2	
19	95301-08600	✓ NUT, hexagon	2	
20	92901-08100	✓ WASHER, spring	4	
21	95301-08800	✓ NUT, crown	2	
22	92901-08600	✓ WASHER, plate	2	

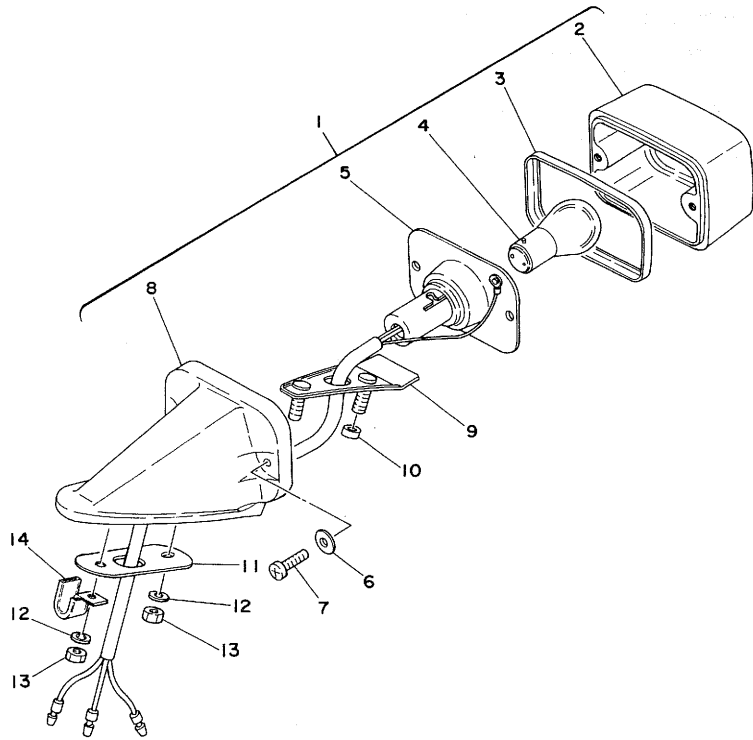
Fig. 26 SPEEDOMETER



Ref.No.	Part No.	Description	Q'ty	Remarks
26-1	2X7-83570-A0	SPEEDOMETER ASS'Y	1	Miles/h
	2X7-83570-F0 ✓	SPEEDOMETER ASS'Y	1	Km/h
2	1E6-83578-60 ✓	. KNOB, trip meter	1	
3	1M1-83526-00 ✓	DAMPER	2	
4	1E6-83524-60 ✓	WASHER	2	
5	90468-12007 ✓	CLIP (402-25375-00)	2	
6	90385-06001 ✓	BUSHING (217-83528-00)	2	
7	1W2-83513-00 ✓	DAMPER, meter	1	
8	1W2-83519-00 ✓	BRACKET, meter	1	
9	97321-06030 ✓	BOLT, hexagon	2	
10	92901-06100 ✓	WASHER, spring	2	
11	92901-06600 ✓	WASHER, plate	2	
12	1W2-83550-01 ✓	SPEEDOMETER CABLE ASS'Y	1	



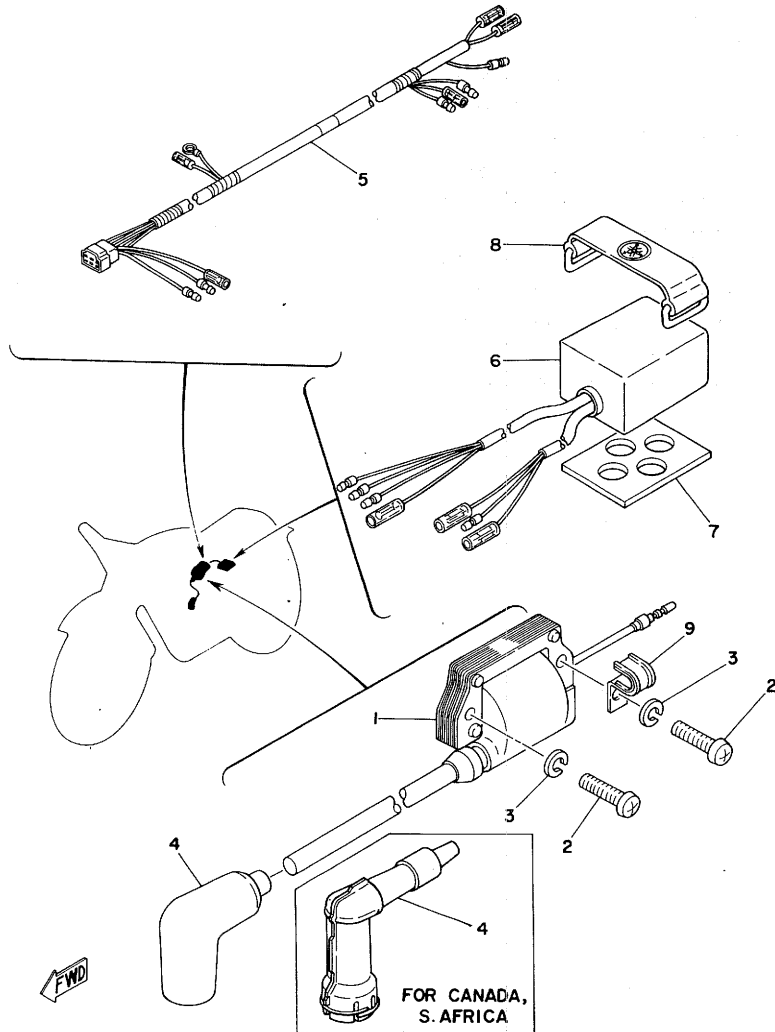
Fig. 27 TAIL LAMP



Ref.No.	Part No.	Description	Q'ty	Remarks
27- 1	434-84500-64 ✓	TAIL LAMP ASS'Y	1	
2	434-84521-69 ✓	. LENS, tail lamp	1	
3	434-84515-61 ✓	. RIM, tail lamp	1	
4	122-84514-30 ✓	. BULB, tail lamp (6V-17/5.3W)	1	
5	434-84517-61 ✓	. SOCKET, tail lamp	1	
6	434-84522-62 ✓	. WASHER, plain	2	
7	434-84524-61 ✓	. SCREW, panhead	2	
8	434-84519-64 ✓	. BRACKET, tail lamp	1	
9	434-84511-63 ✓	. BRACKET	1	
10	434-84557-60 ✓	. COLLAR (6-18-5-6-5)	2	
11	1W2-84525-00 ✓	WASHER, special	1	
12	92901-05100 ✓	WASHER, spring	2	
13	95301-05600 ✓	NUT, hexagon	2	
14	90462-05005 ✓	CLAMP (363-15485-01)	1	

FWD

Fig. 28 ELECTRICAL



Ref.No.	Part No.	Description	Q'ty	Remarks
28- 1	1M2-82310-40 ✓	IGNITION COIL ASS'Y	1	
2	92501-06025 ✓	SCREW, panhead	2	
3	92901-06100 ✓	WASHER, spring	2	
4	294-82370-00 ✓	PLUG CAP ASS'Y	1	
	808-82370-10 ✓	PLUG CAP ASS'Y (with Noise Suppressor)	1	For Canada, S. Africa.
5	1W2-82590-01 ✓	WIRE HARNESS ASS'Y	1	
6	2W6-85540-20 ✓	C.D.I. UNIT ASS'Y	1	
7	2K7-85547-00 ✓	DAMPER	1	
8	288-21376-00 ✓	BAND, battery	1	
9	90462-05005 ✓	CLAMP (363-15485-01)	1	