



YAMAHA

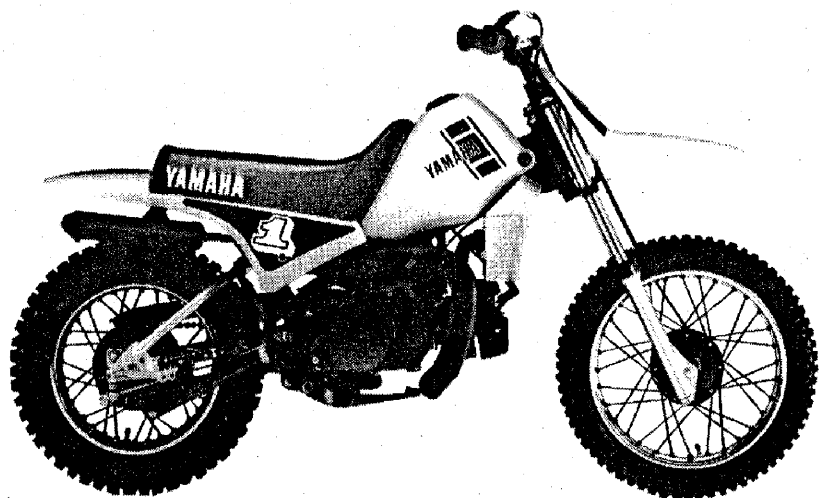
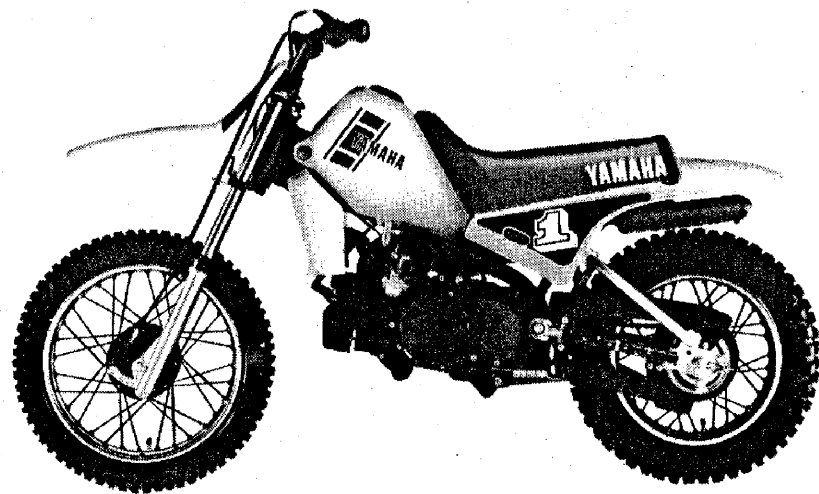
PARTS CATALOGUE

PW80K (21W)

保	管	用	
用	濟	次	第
乞	御	返	却
	技	術	係

1321W-700E1

A2



A3

FOREWORD

This Parts Catalogue is related to the parts in use for the Yamaha PW 80K (21W).
When you are ordering replacement parts for the PW 80K (21W), refer to this Parts Catalogue and quote both part numbers and part names correctly.

1. Modifications or additions which have been made after issue of the Parts Catalogue will be announced in the Yamaha Parts News.
It is advisable that according to the Yamaha Parts News you make necessary corrections to the Parts Catalogue on hand to keep it up-to-date.

2. Abbreviations

The following abbreviations are used in this Parts Catalogue.

- U.R. Use size (thickness) and/or number as required.
- U.N. Use as many as you need.
- A.P. Alternate Parts
- L.M. Local Made
- F# Frame No. (Applicable machine No.)

3. The parts marked with (*) in the parts number column of this Catalogue are not supplied with by Yamaha, those have to be found locally.
4. Parts, which are to be supplied in the form of assemblies, are listed with an indention of one letter's space, and a dot (.) is put against the name of each part.

EXAMPLE CARBURETOR ASS'Y
 . JET, pilot
 . NOZZLE, main

5. Indication of No. of constituent parts for assembly

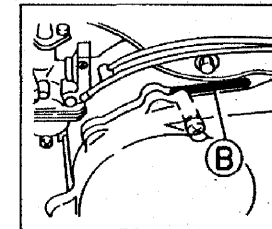
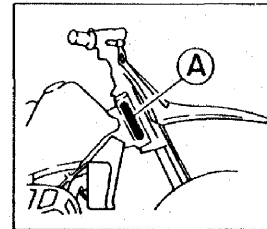
The numeral appearing to the right of each constituent part under the description indicates the quantity of such parts for each individual assembly unit.

EXAMPLE

Part No.	Description	Q'ty	Remarks
2F5-83310-60	FRONT FLASHER LIGHT ASS'Y	2	
115-83311-60	. BULB (6V-18W)	1	
1M1-83309-60	. REFLECTOR	1	

6. Initial Serial No. and Color Code

(A) Frame Serial No.	21W-000101 and following
(B) Engine Serial No.	21W-000101 and following



Color Code	Color Name	Abbreviate
	Clean White	

7. Applicable colors of graphics are represented in the "Remarks" column by the letter(s) appropriately picked out of the full word(s) showing such colors.

EXAMPLE

Part No.	Description	Q'ty	Remarks
2N4-24110-00-X5	FUEL TANK COMP.	1	MAXIM RED
3J1-24240-10	. GRAPHIC, fuel tank set	1	for MXR

CONTENTS

ENGINE

Cylinder	B2
Crankshaft · Piston	B3
C.D.I Magneto	B4
Oil Pump	B5
Intake	B6
Carburetor	B7 ~ B8
Exhaust	B9
Crankcase	B10
Crankcase Cover	B11
Kick Starter	B12
Clutch	B13 ~ B14
Transmission	B15
Shift Cam · Fork	C2
Shift Shaft · Pedal	C3

CHASSIS

Frame	C4
Front Fender	C5
Side Cover	C6
Oil Tank · Tool	C7
Rear Arm · Suspension	C8
Steering	C9
Front Fork	C10 ~ C11
Fuel Tank	C12
Seat	C13
Front Wheel	C14
Rear Wheel	C15 ~ D2
Handlebar · Cable	D3
Stand · Footrest	D4

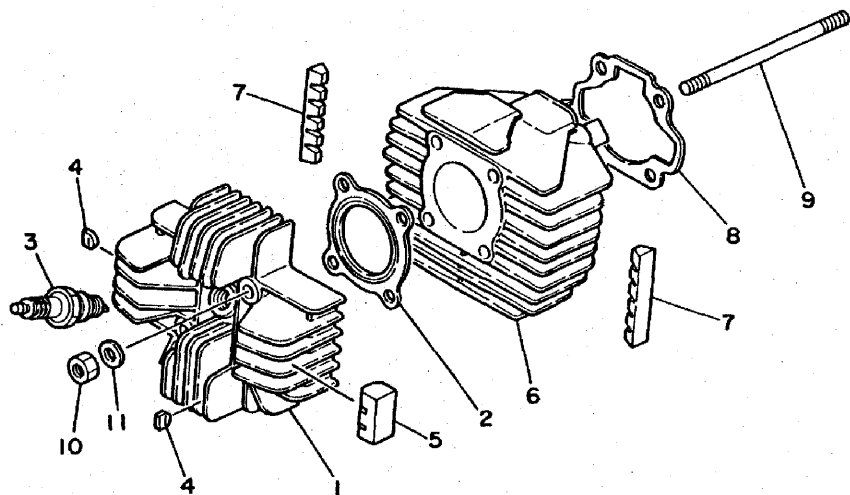
Electrical 1	D5
Handle Switch · Lever	D6

INDEX

Numerical Index	M1 ~ M2
Parts Name Index	M13 ~ M16

FIG. 1 CYLINDER

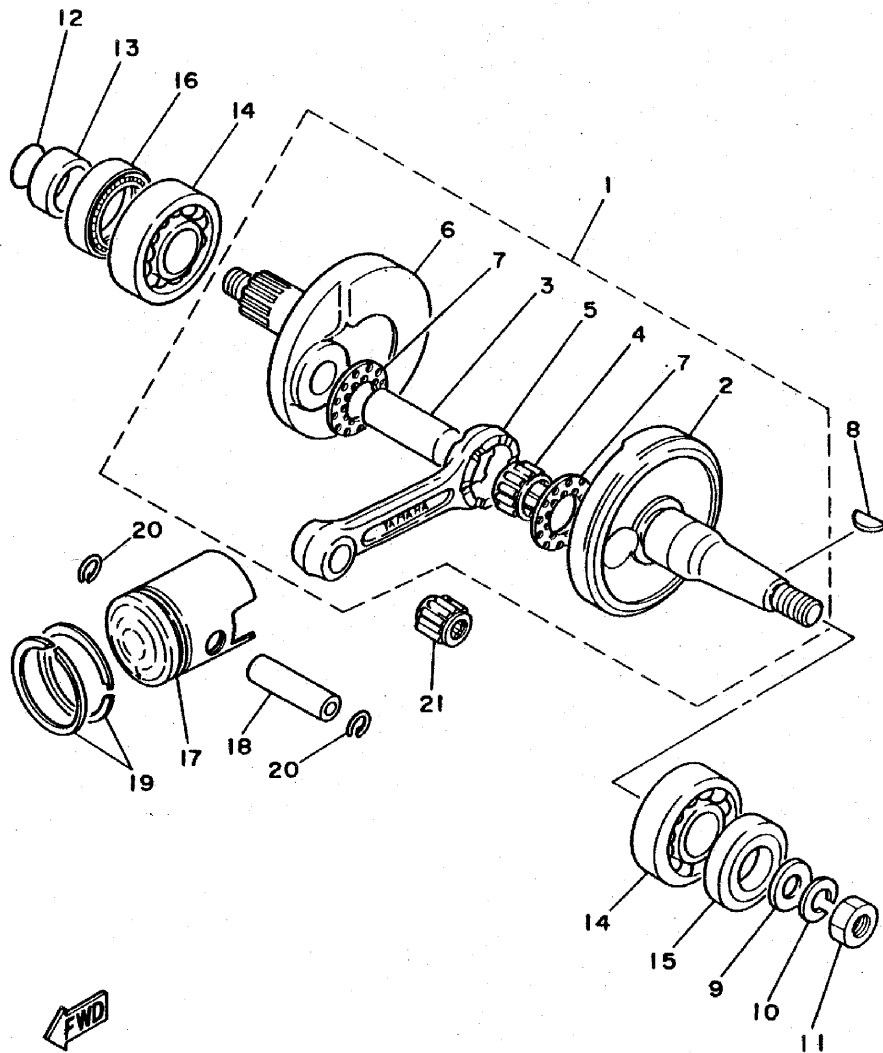
REF. NO.	PART NO.	DESCRIPTION	Q'TY	REMARKS
1	21W-11111-00	HEAD, cylinder 1	1	
2	1W7-11181-00	GASKET, cylinder head 1	1	
3	94701-00108	PLUG, sPark (NGK BP6HS)	1	UR
	94701-00175	PLUG, sPark	1	UR
4	463-11161-01	ABSORBER 1	4	
5	21W-11162-00	ABSORBER 2	1	
6	3E5-11311-01	CYLINDER 1	1	
7	3E5-11162-00	ABSORBER 2	2	
8	300-11351-01	GASKET, cylinder	1	
9	90116-07035	BOLT, stud	4	
10	90170-07019	NUT	4	
11	90201-07653	WASHER, Plate	4	



21W110-3010

B2

FIG. 2 CRANKSHAFT-PISTON

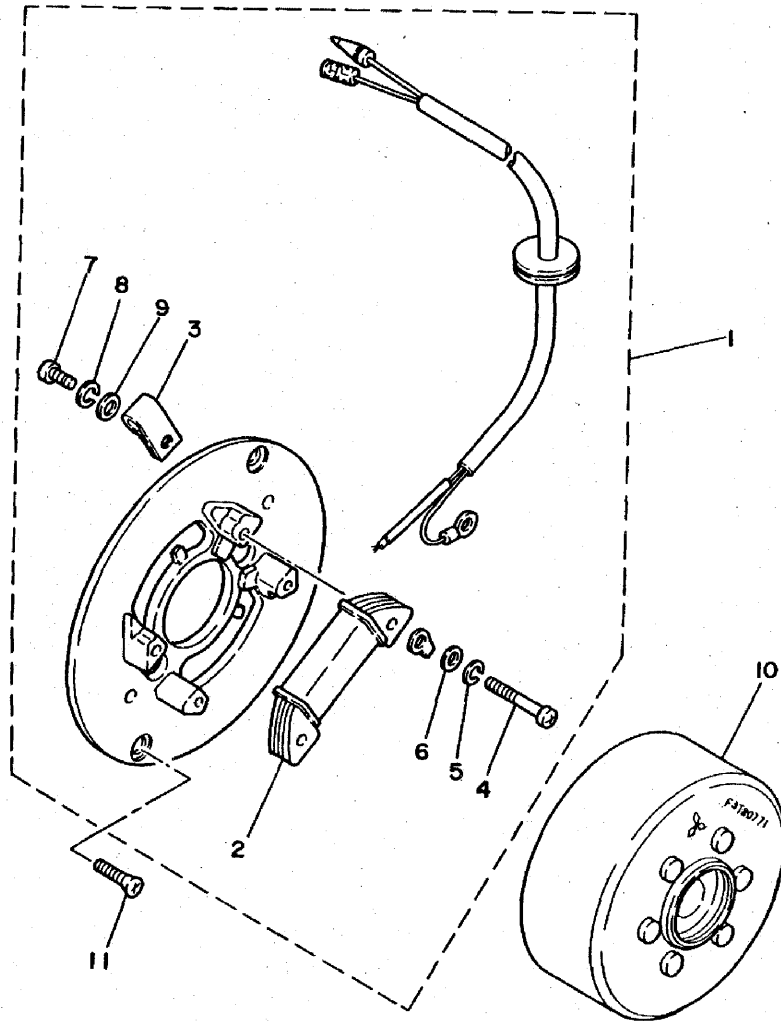


REF. NO.	PART NO.	DESCRIPTION	Q'TY	REMARKS
1	1W7-11400-01	CRANKSHAFT ASSY	1	
2	1W7-11412-00	•CRANK 1	1	
3	2Y1-11681-00	•PIN, crank 1	1	
4	93310-420F2	•BEARING, cylindrical	1	
5	1W7-11651-00	•ROD, connecting	1	
6	1W7-11422-01	•CRANK 2	1	
7	90209-20159	•WASHER	2	
8	90280-03017	KEY, woodruff	1	
9	92901-12600	WASHER, Plate	1	
10	92901-12100	WASHER, sPring	1	
11	95311-12600	NUT	1	
12	93210-18023	O-RING	1	
13	90387-20603	COLLAR	1	
14	93306-20529	BEARING (B6205C4)	2	
15	93103-25098	OIL SEAL	1	
16	93103-32099	OIL SEAL	1	
17	3E5-11631-00-97	PISTON (STD)	1	
	3E5-11635-00	PISTON (1ST O/S 0.25MM)	1	AP
	3E5-11636-00	PISTON (2ND O/S 0.50MM)	1	AP
18	527-11633-00	PIN, Piston	1	
19	3E5-11610-00	PISTON RING SET (STD)	1	
	3E5-11610-10	PISTON RING SET (1ST O/S)	1	AP
	3E5-11610-20	PISTON RING SET (2ND O/S)	1	AP
20	93450-13022	CIRCLIP	2	
21	93310-11268	BEARING, cylindrical	1	

21W110-3020

B3

FIG. 3 C.D.I MAGNETO



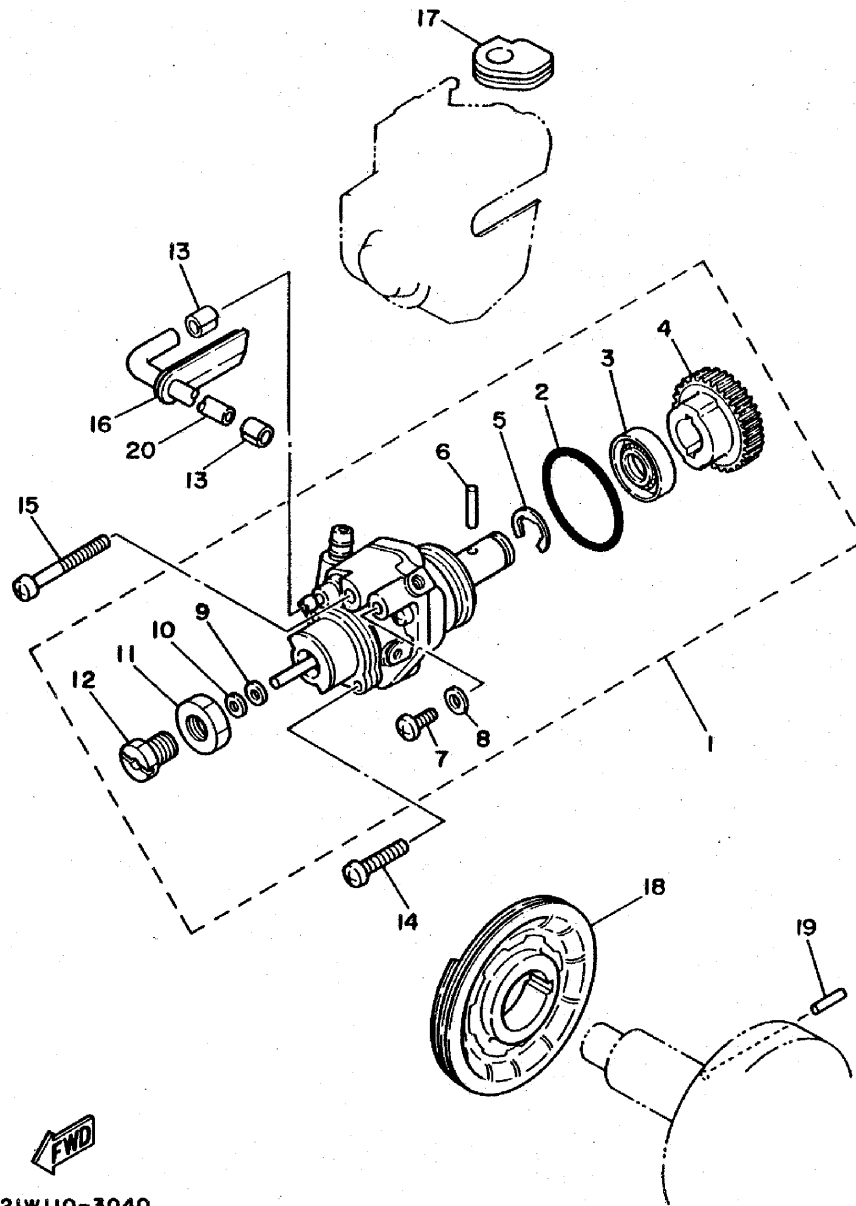
REF. NO.	PART NO.	DESCRIPTION	Q'TY	REMARKS
1	21W-85510-20	STATOR ASSY	1	
2	21W-85512-20	.COIL, source	1	
3	104-81328-20	.CLAMP	1	
4	98501-04025	.SCREW, Pan head	2	
5	92902-04100	.WASHER, sPrin8	2	
6	92901-04600	.WASHER, Plate	2	
7	98502-04008	.SCREW, Pan head	1	
8	92902-04100	.WASHER, sPrin8	1	
9	92901-04600	.WASHER, Plate	1	
10	21W-85550-20	ROTOR ASSY	1	
11	98701-05016	SCREW, flat head	2	



21W110-3030

B4

FIG. 4. OIL PUMP



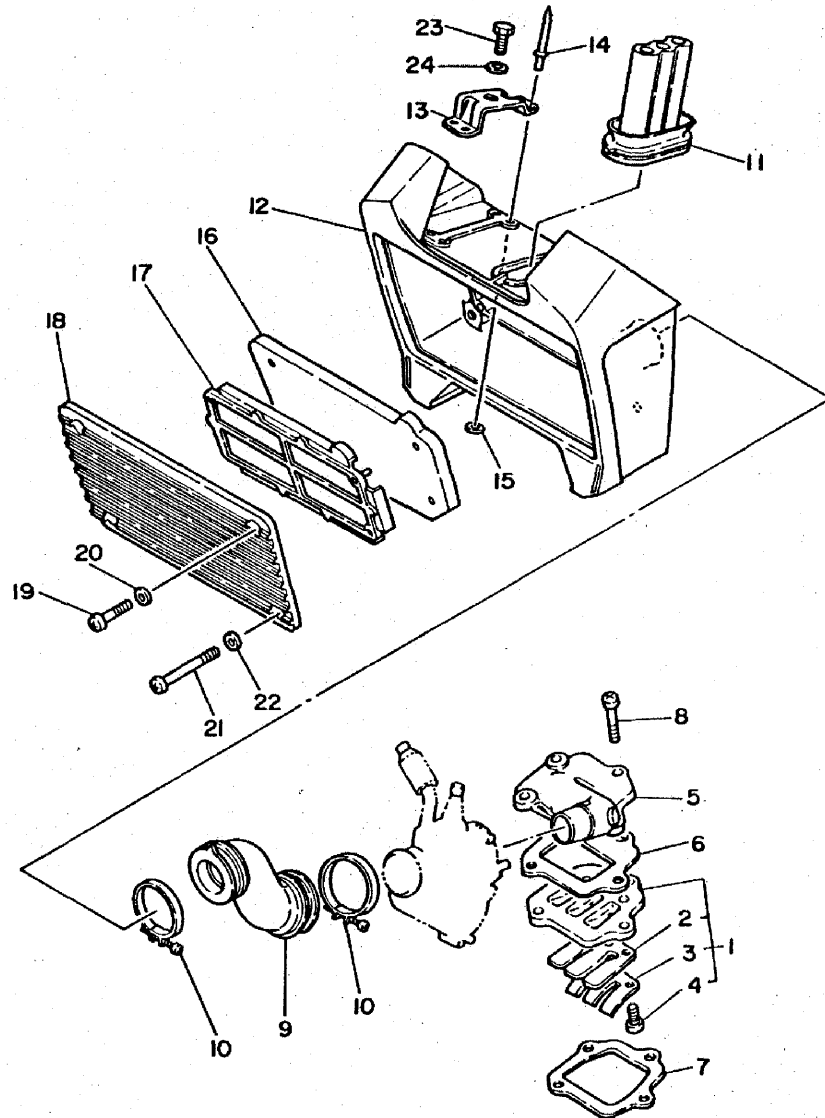
REF. NO.	PART NO.	DESCRIPTION	Q'TY	REMARKS
1	3E5-13100-01	OIL PUMP ASSY	1	
2	93210-26240	•O-RING	1	
3	93101-10001	•OIL SEAL	1	
4	2T5-13124-00	•GEAR, worm wheel (7IT)	1	
5	93430-07012	•CIRCLIP	1	
6	93603-14026	•PIN, dowel	1	
7	98901-04008	•SCREW, bind	1	
8	90430-04004	•GASKET	1	
9	296-13147-00	•SHIM	1	
10	384-13138-00	•PLATE, adjustin8	1	
11	90170-10105	•NUT	1	
12	90401-10029	•BOLT, union	1	
13	90468-02033	CLIP	2	
14	98501-05020	SCREW, Pan head	1	
15	98501-05035	SCREW, Pan head	1	
16	90480-10005	GROMMET	1	
17	384-13174-00	HOLDER, oil PiPe	1	
18	2W9-13178-00	GEAR, PumP drive	1	
19	93603-08072	PIN, dowel	1	
20	384-13161-02	PIPE, delivery	1	



21W110-3040

B5

FIG. 5 INTAKE



REF. NO.	PART NO.	DESCRIPTION	Q'TY	REMARKS
1	300-13610-01	REED VALVE ASSY	1	
2	300-13613-02	.REED, valve	1	
3	300-13616-00	.STOPPER, reed valve	1	
4	98501-03008	.SCREW, Pan head	3	
5	21W-13555-00	MANIFOLD, intake	1	
6	300-13622-02	GASKET, valve seat	1	
7	300-13621-01	GASKET, valve seat	1	
8	92501-06030	SCREW, Pan head	4	
9	21W-14453-00	JOINT, air cleaner 1	1	
10	90460-37130	CLAMP, hose	2	
11	21W-14454-00	JOINT	1	
12	21W-14411-10	CASE, air cleaner 1	1	
13	21W-14498-00	STAY 1	2	
14	90267-40080	RIVET, blind	8	
15	92901-04600	WASHER, Plate	8	
16	21W-14451-00	ELEMENT, air cleaner	1	
17	21W-14458-00	GUIDE	1	
18	21W-14412-00	CAP, cleaner case 1	1	
19	98506-05025	SCREW, Pan head	2	
20	92906-05600	WASHER, Plate	2	
21	98506-05050	SCREW, Pan head	2	
22	92906-05600	WASHER, Plate	2	
23	97306-08016	BOLT	2	
24	92906-08600	WASHER, Plate	2	

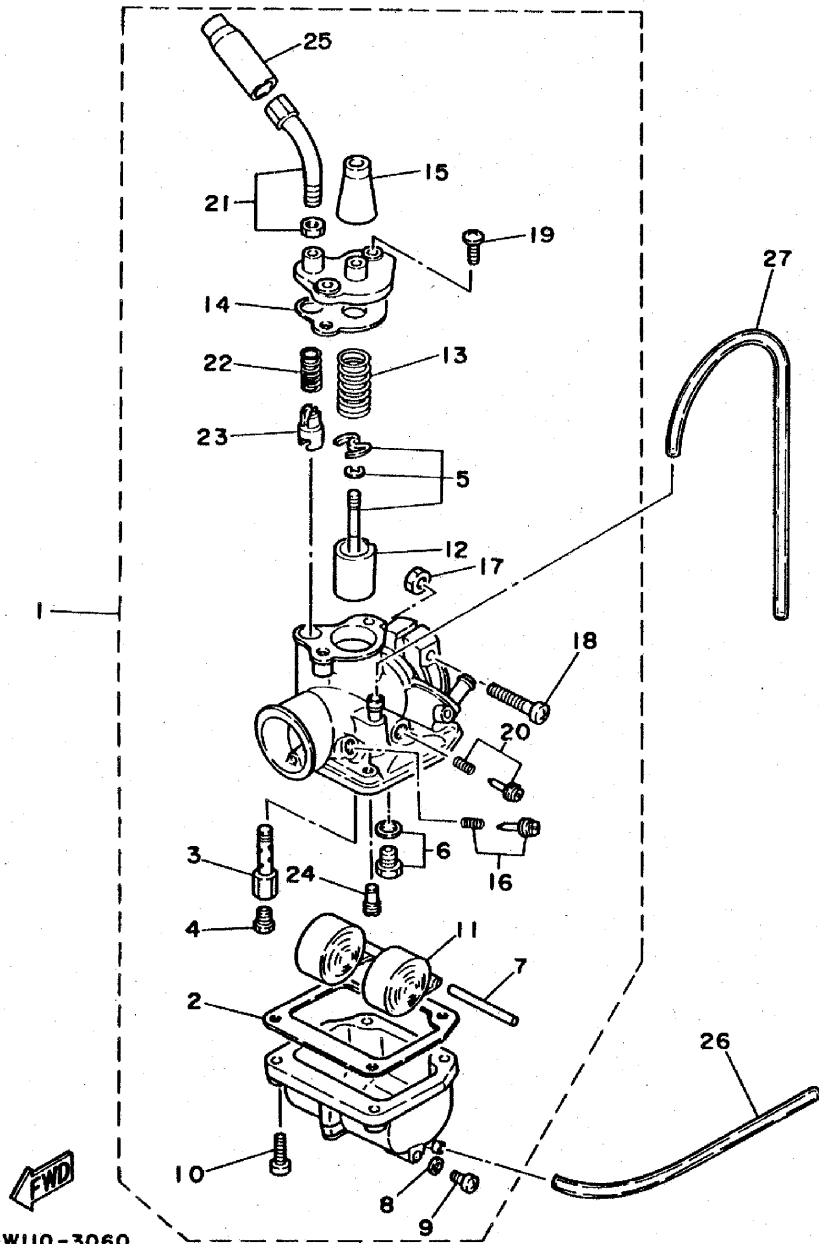


21W300-3050

B6

FIG. 6 CARBURETOR

REF. NO.	PART NO.	DESCRIPTION	Q'TY	REMARKS
1	21W-14101-00	CARBURETOR ASSY 1	1	
2	296-14184-01	•GASKET, float chamber	1	
3	127-14141-14	•NOZZLE, main	1	
4	127-14143-25	•JET, main (#125)	1	UR STD
	127-14143-24	•JET, main (#120)	1	UR
	127-14143-26	•JET, main (#130)	1	UR
5	21W-1490J-00	•NEEDLE SET	1	
6	21W-14107-12	•NEEDLE VALVE SET	1	
7	127-14186-00	•PIN, float	1	
8	296-14117-00	•WASHER, Plug screw	1	
9	98501-05008	•SCREW, Pan head	1	
10	98501-04016	•SCREW, Pan head	4	
11	2E9-14185-00	•FLOAT	1	
12	296-14112-25	•VALVE, throttle 1	1	
13	296-14131-00	•SPRING, throttle valve	1	
14	296-14198-01	•GASKET	1	
15	307-14169-10	•CAP	1	
16	12G-14104-00	•AIR SCREW SET	1	
17	95301-05600	•NUT	1	
18	98502-05030	•SCREW, Pan head	1	
19	98503-04010	•SCREW, Pan head	2	
20	12G-14103-00	•THROTTLE SCREW SET	1	
21	21W-14503-00	•ADJUST SCREW SET	1	
22	127-14135-00	•SPRING, Plunger	1	
23	127-14171-00	•PLUNGER, starter	1	
24	193-14142-15	•JET, Pilot (#15.0)	1	
25	1R0-14169-00	•CAP	1	
26	90445-05390	HOSE	1	

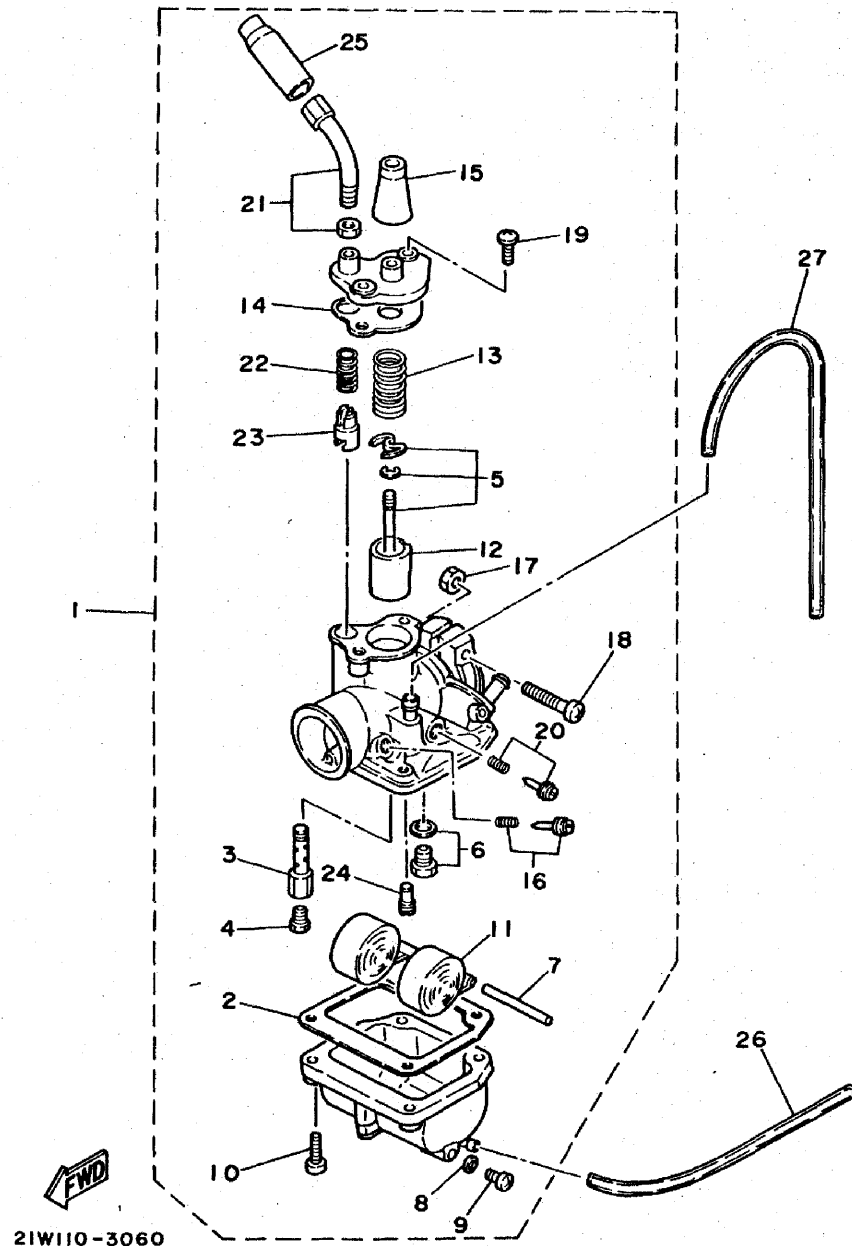


21W110-3060

B7

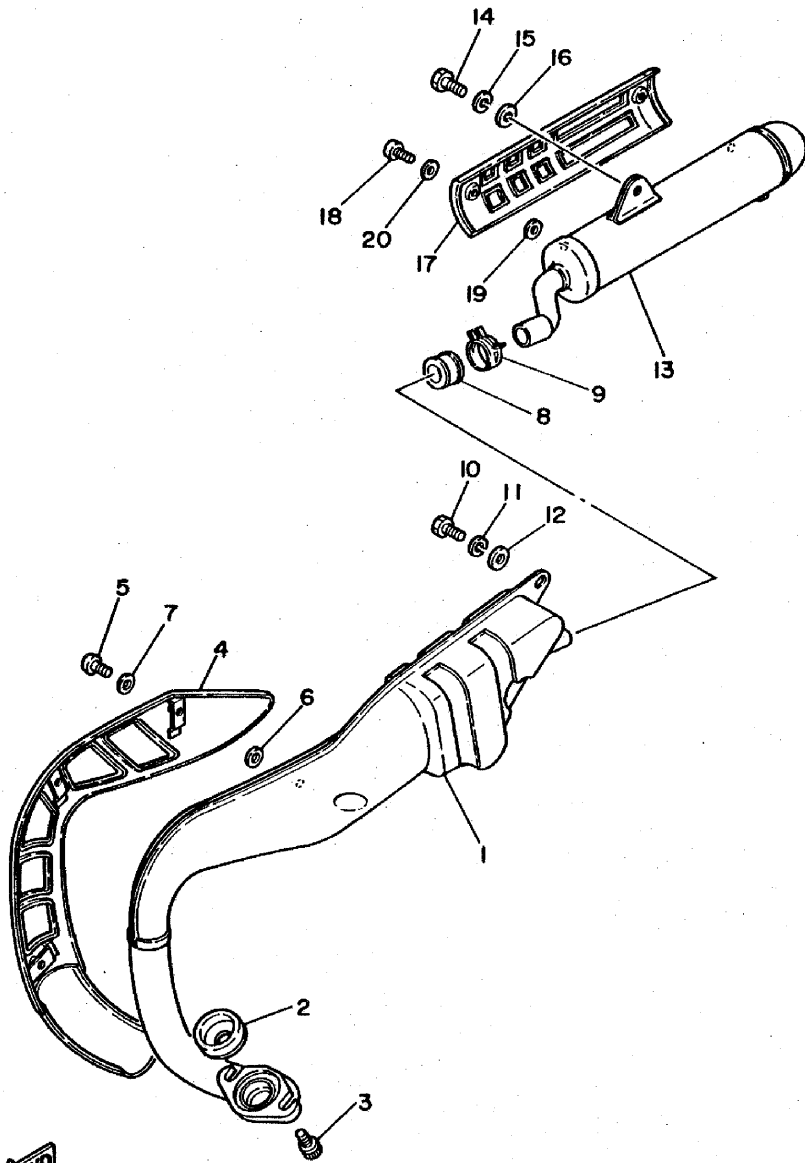
FIG. 6 CARBURETOR

REF. NO.	PART NO.	DESCRIPTION	Q'TY	REMARKS
27	90445-07036	HOSE	1	



B8

FIG. 7 EXHAUST

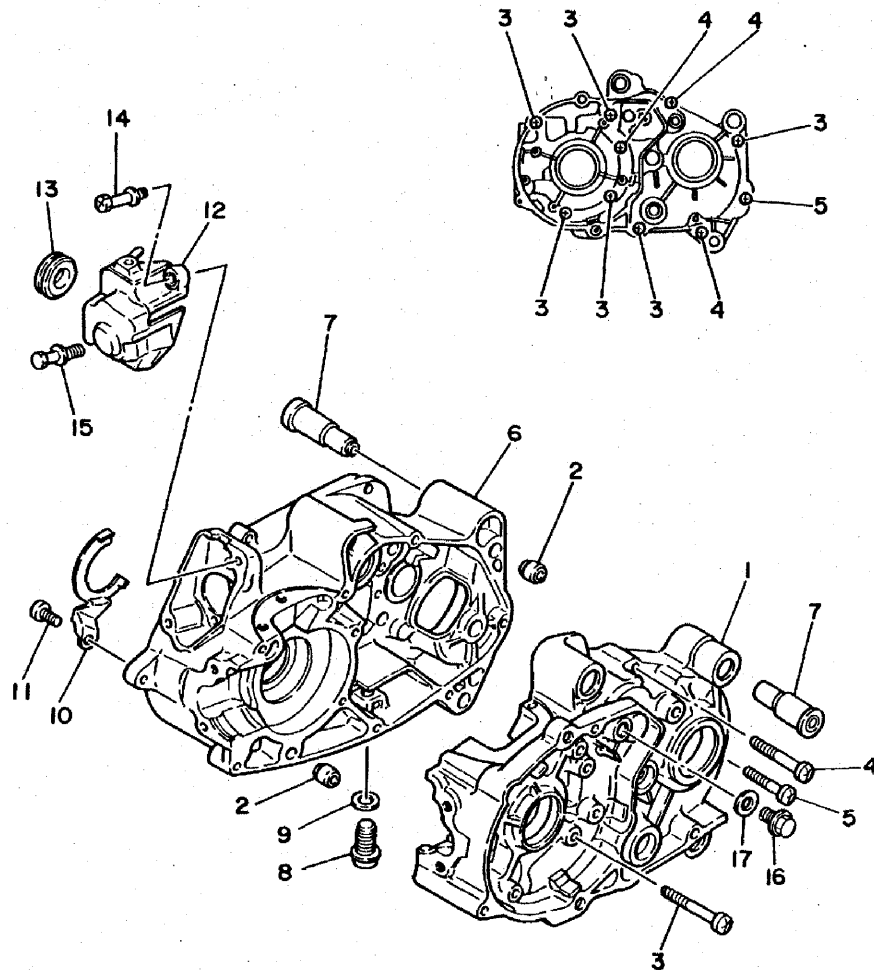


REF. NO.	PART NO.	DESCRIPTION	Q'TY	REMARKS
1	21W-14610-01	EXHAUST PIPE ASSY 1	1	
2	21W-14613-00	GASKET, exhaust Pipe	1	
3	90109-08629	BOLT	2	
4	21W-14708-00	PROTECTOR ASSY	1	
5	90157-05003	SCREW, Pan head	3	
6	90430-04167	GASKET	3	
7	90430-05008	GASKET	3	
8	4X4-14714-00	GASKET, muffler	1	
9	90467-22048	CLIP	1	
10	97301-08016	BOLT	1	
11	92901-08100	WASHER, sPring	1	
12	92901-08600	WASHER, Plate	1	
13	21W-14753-02	SILENCER, exhaust	1	
14	97301-08016	BOLT	1	
15	92901-08100	WASHER, sPring	1	
16	92901-08600	WASHER, Plate	1	
17	21W-14758-00	PROTECTOR, silencer	1	
18	90157-05003	SCREW, Pan head	2	
19	90430-04167	GASKET	2	
20	90430-05008	GASKET	2	

21W110-3070

B9

FIG. 8 CRANKCASE



REF. NO.	PART NO.	DESCRIPTION	Q'TY	REMARKS
1	1W7-15111-03	CRANKCASE 1	1	
2	91830-22016	PIN, dowel	2	
3	92501-06050	SCREW, Pan head	6	
4	92501-06045	SCREW, Pan head	3	
5	92501-06035	SCREW, Pan head	1	
6	1W7-15121-03	CRANKCASE 2	1	
7	296-15316-00	DAMPER, engine mount 1	6	
8	90340-12005	PLUG, straight screw	1	
9	90430-12038	GASKET	1	
10	300-15128-00	HOLDER	1	
11	92501-08010	SCREW, Pan head	1	
12	517-15416-01	COVER, oil pump	1	
13	90480-21038	GROMMET	1	
14	90149-06157	SCREW	1	
15	90101-06394	BOLT	1	
16	90105-10147	BOLT, washer based	1	
17	90430-10031	GASKET	1	

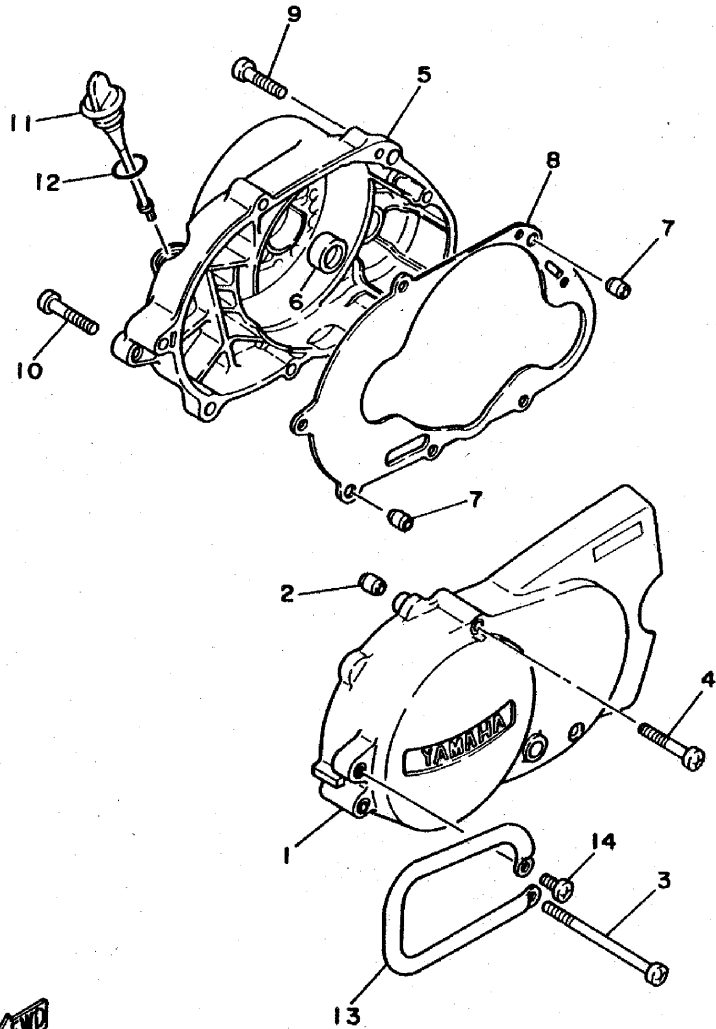


21W110-3080

B10

FIG. 9 CRANKCASE COVER

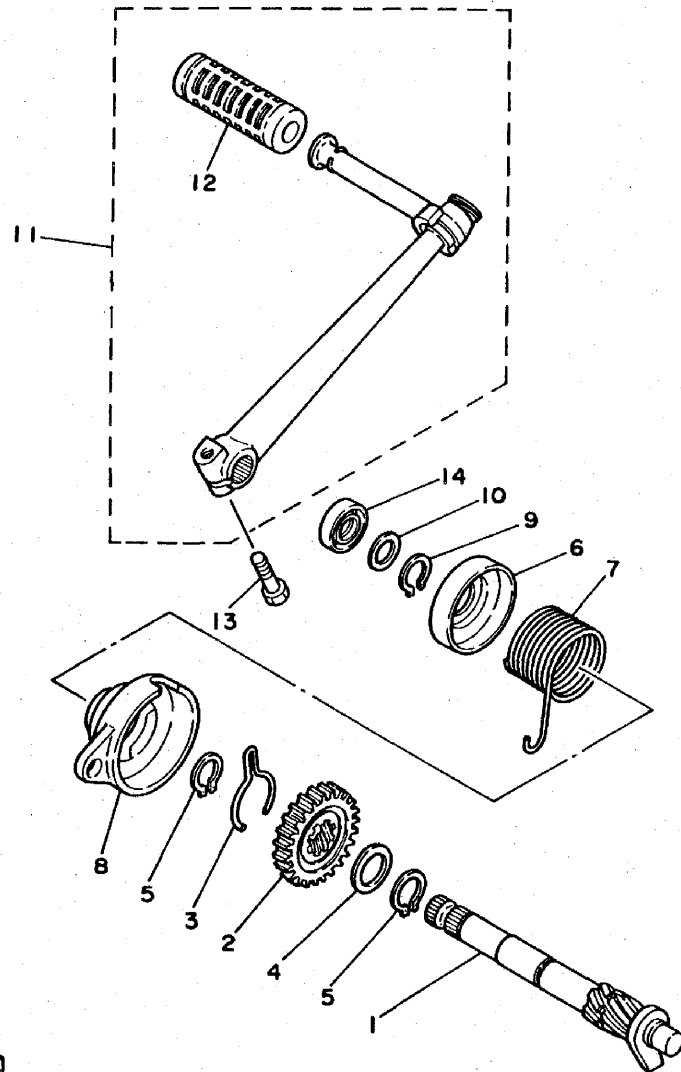
REF. NO.	PART NO.	DESCRIPTION	Q'TY	REMARKS
1	21W-15411-00	COVER, crankcase 1	1	
2	91830-21014	PIN, dowel	2	
3	92506-06100	SCREW, Pan head	1	
4	92506-06045	SCREW, Pan head	3	
5	21W-15421-00	COVER, crankcase 2	1	
6	93104-11053	OIL SEAL	1	
7	91830-21014	PIN, dowel	2	
8	517-15451-01	GASKET, crankcase cover	1	
9	92506-06035	SCREW, Pan head	6	
10	92506-06040	SCREW, Pan head	1	
11	517-15362-01	PLUG, oil level	1	
12	93210-21190	O-RING	1	
13	21W-15491-01	PROTECTOR	1	
14	92506-06012	SCREW, Pan head	1	



21W110-3090

B11

FIG. 10 KICK STARTER



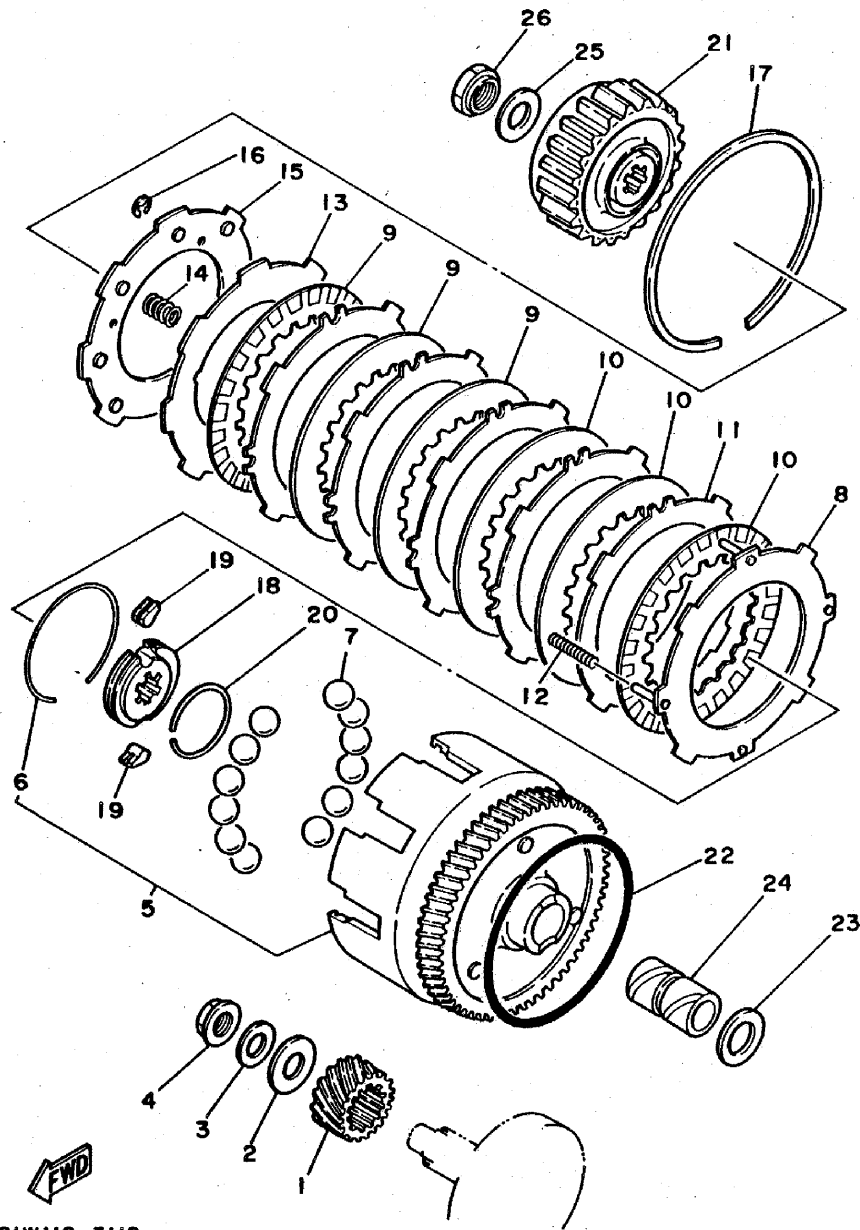
REF. NO.	PART NO.	DESCRIPTION	Q'TY	REMARKS
1	3E5-15660-00	KICK AXLE ASSY	1	
2	3E5-15641-00	GEAR, kick (21T)	1	
3	90468-23093	CLIP	1	
4	90201-20266	WASHER, Plate	1	
5	93410-20009	CIRCLIP	2	
6	3E5-15676-00	COVER, sPring	1	
7	90508-26136	SPRING, torsion	1	
8	3E5-15664-00	GUIDE, sPring	1	
9	93410-17008	CIRCLIP	1	
10	90201-15701	WASHER, Plate (1.0T)	1	
11	21W-15620-00	KICK CRANK ASSY	1	
12	156-15618-01	COVER, kick lever	1	
13	97311-06025	BOLT	1	
14	93109-15001	OIL SEAL	1	



21W110-3100

B12

FIG. 11 CLUTCH

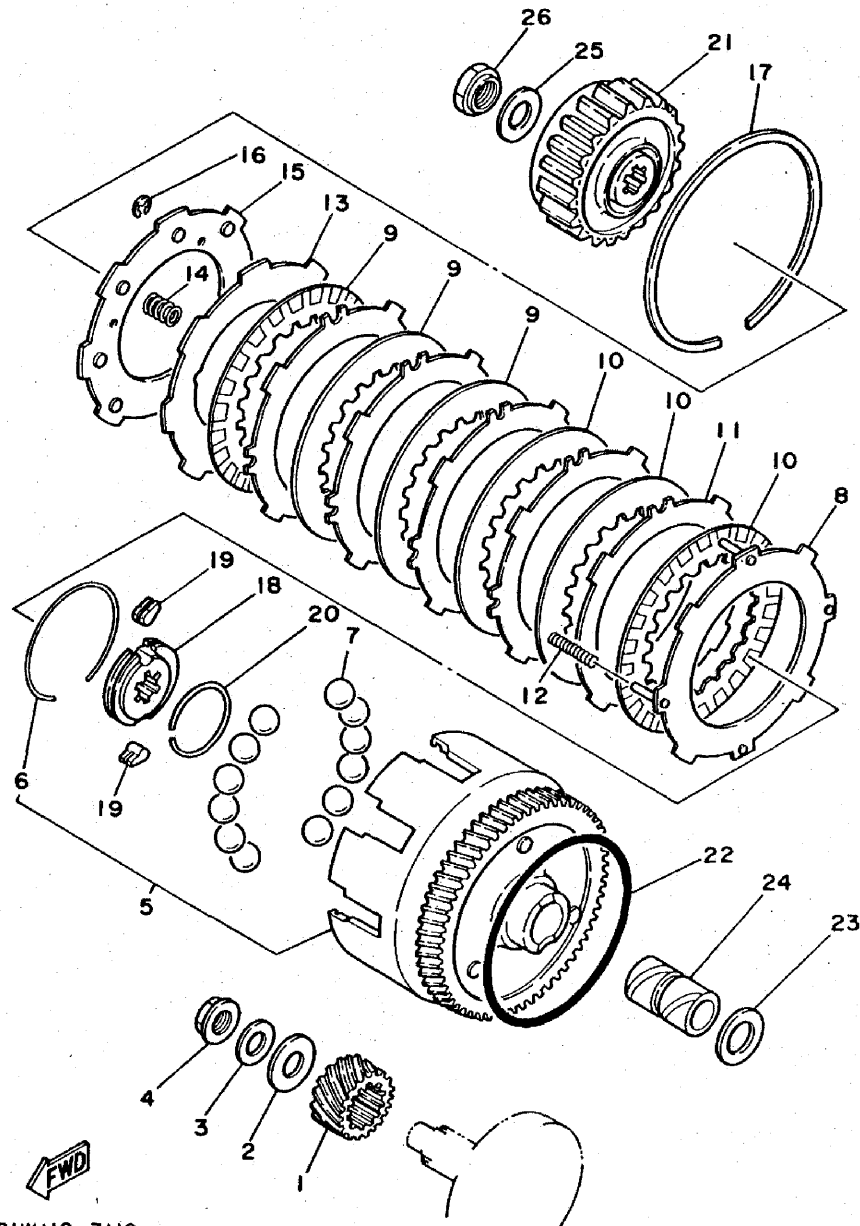


REF. NO.	PART NO.	DESCRIPTION	Q'TY	REMARKS
1	1W7-16110-00-20	PRIMARY DRIVE GEAR ASSY	1	UR
	1W7-16110-00-30	PRIMARY DRIVE GEAR ASSY	1	UR
	1W7-16110-00-40	PRIMARY DRIVE GEAR ASSY	1	UR
2	90201-12317	WASHER, Plate	1	
3	90208-12015	WASHER, conical spring	1	
4	90179-12244	NUT	1	
5	3E5-16150-00-20	PRIMARY DRIVEN GEAR COMP.	1	UR
	3E5-16150-00-30	PRIMARY DRIVEN GEAR COMP.	1	UR
	3E5-16150-00-40	PRIMARY DRIVEN GEAR COMP.	1	UR
6	90468-16090	CLIP	1	
7	93505-08030	BALL	12	
8	527-16520-10	PLATE, thrust weight	1	
9	3E5-16521-00	PLATE, friction	3	
10	116-16521-00	PLATE, friction	3	
11	517-16524-10	PLATE, clutch 1 (1.2T)	5	UR
	517-16524-20	PLATE, clutch 1 (1.4T)	5	UR
	517-16524-30	PLATE, clutch 1 (1.6T)	5	UR
12	90501-10602	SPRING, compression	4	
13	517-16550-10	PRESSURE PLATE ASSY	1	
14	90501-12088	SPRING, compression	6	
15	517-16561-01	PLATE, Pressure 2	1	
16	93430-03013	CIRCLIP	2	
17	93451-11037	CIRCLIP	1	
18	517-16180-00	ONE WAY BOSS COMP.	1	
19	384-15635-00	PAWL, kick	2	
20	2T4-15637-00	SPRING, Pawl	1	
21	527-16571-00	BOSS, clutch	1	
22	93210-98202	O-RING	1	

21W110-3110

B13

FIG. 11 CLUTCH

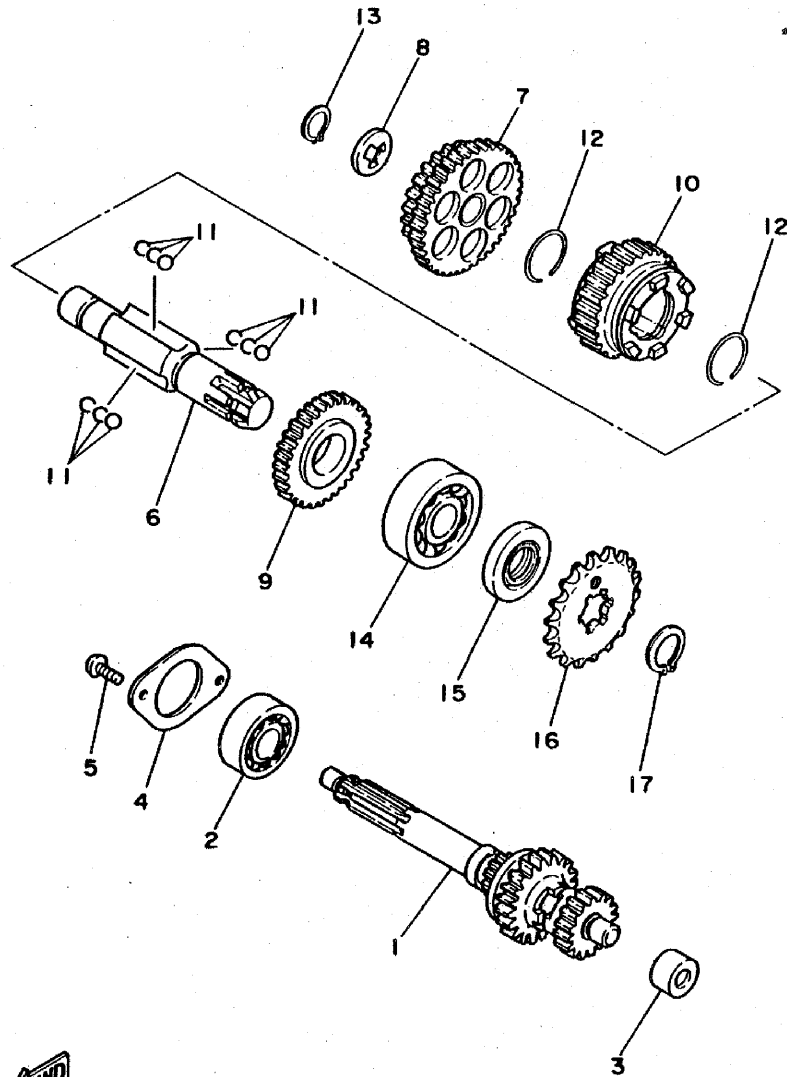


REF. NO.	PART NO.	DESCRIPTION	Q'TY	REMARKS
23	122-16164-00	PLATE, thrust 2	1	
24	90560-17124	SPACER	1	
25	90208-16019	WASHER, conical spring	1	
26	90179-16190	NUT	1	

21W110-3110

B14

FIG. 12 TRANSMISSION



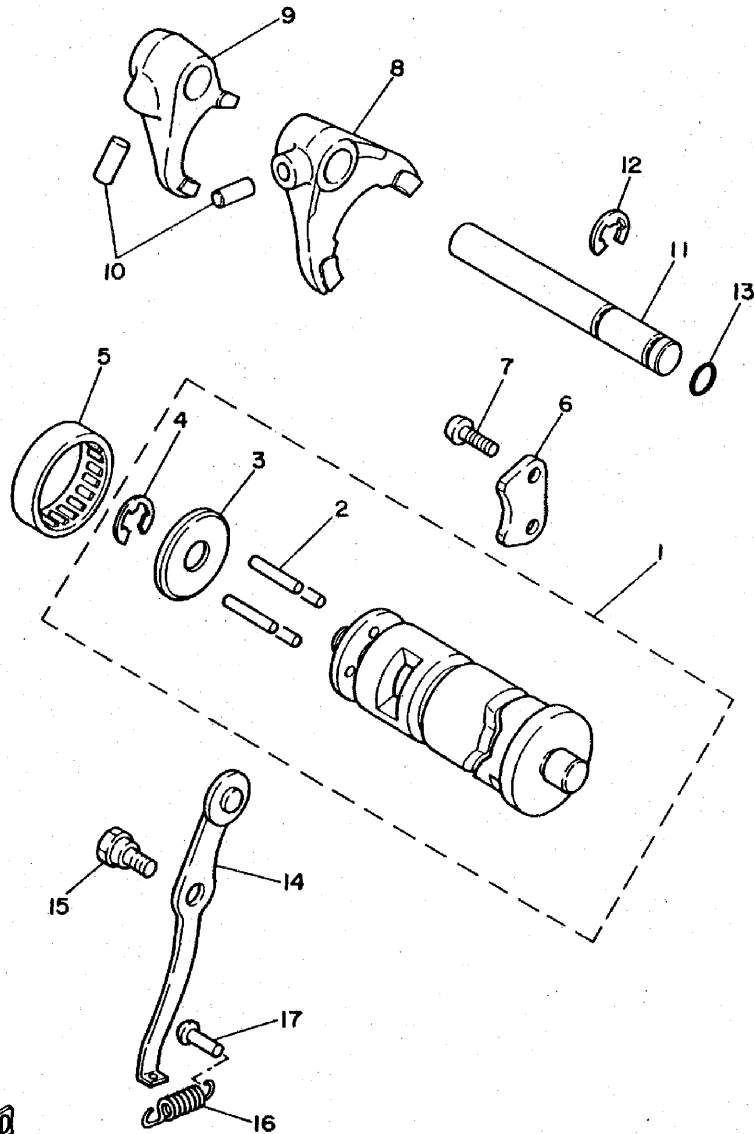
REF. NO.	PART NO.	DESCRIPTION	Q'TY	REMARKS
1	21W-17410-00	MAIN AXLE COMP.	1	
2	93306-20316	BEARING (B6203)	1	
3	93320-41202	BEARING	1	
4	296-17471-00	PLATE, cover	1	
5	92501-06012	SCREW, Pan head	2	
6	1W7-17421-10	AXLE, drive	1	
7	1W7-17211-12	GEAR, 1st wheel (39T/26T)	1	
8	90209-15178	WASHER (0.6T)	1	UR
	90209-15179	WASHER (0.8T)	1	UR
	90209-15180	WASHER (1.0T)	1	UR
9	1W7-17221-20	GEAR, 2nd wheel (29T)	1	
10	21W-17231-00	GEAR, 3rd wheel (22T)	1	
11	93509-32012	BALL	9	
12	93450-28049	CIRCLIP	2	
13	93440-15012	CIRCLIP	1	
14	93306-20401	BEARING (B6204)	1	
15	93102-20143	OIL SEAL	1	
16	517-17461-52	SPROCKET, drive (15T)	1	
17	93410-20038	CIRCLIP	1	



21W110-3120

B15

FIG. 13 SHIFT CAM.FORK



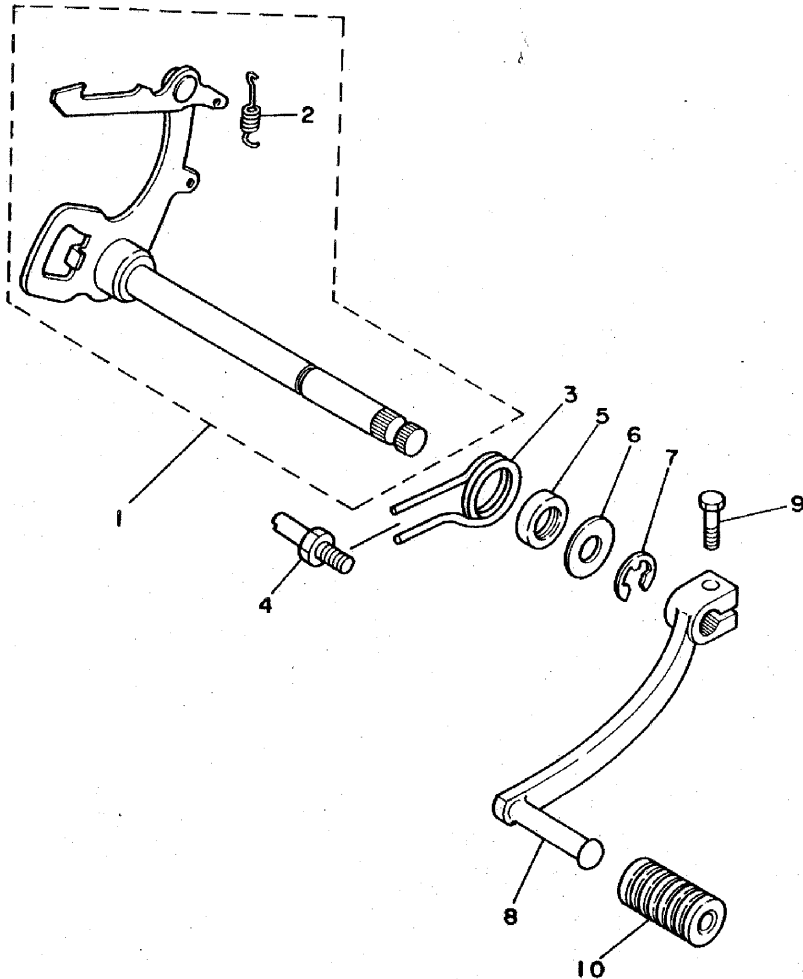
REF. NO.	PART NO.	DESCRIPTION	Q'TY	REMARKS
1	21W-18540-01	SHIFT CAM ASSY	1	
2	93604-22050	.PIN, dowel	4	
3	296-18561-00	.PLATE, side	1	
4	93430-09019	.CIRCLIP	1	
5	93315-23208	BEARING, cylindrical	1	
6	296-18562-01	PLATE, stopper 2	1	
7	92501-06014	SCREW, Pan head	2	
8	1W7-18511-01	FORK, shift 1	1	
9	1W7-18512-02	FORK, shift 2	1	
10	93606-14081	PIN, dowel	2	
11	2N8-18531-00	BAR, shift fork Guide 1	1	
12	93430-10016	CIRCLIP	1	
13	93210-08006	O-RING	1	
14	296-18140-02	STOPPER LEVER ASSY	1	
15	90109-06001	BOLT	1	
16	90506-10184	SPRING, tension	1	
17	132-16346-00	HOOK, spring	1	

FWD
21W110-3130

C2

FIG. 14 SHIFT SHAFT-PEDAL

REF. NO.	PART NO.	DESCRIPTION	Q'TY	REMARKS
1	4G2-18101-00	SHIFT SHAFT ASSY	1	
2	90506-08122	SPRING, tension	1	
3	90508-32263	SPRING, torsion	1	
4	278-18127-00	STOPPER, screw	1	
5	93101-12004	OIL SEAL	1	
6	90201-12575	WASHER, Plate	1	
7	93430-10016	CIRCLIP	1	
8	21W-18111-00	PEDAL, shift	1	
9	97321-06020	BOLT	1	
10	132-18113-01	COVER, shift Pedal	1	

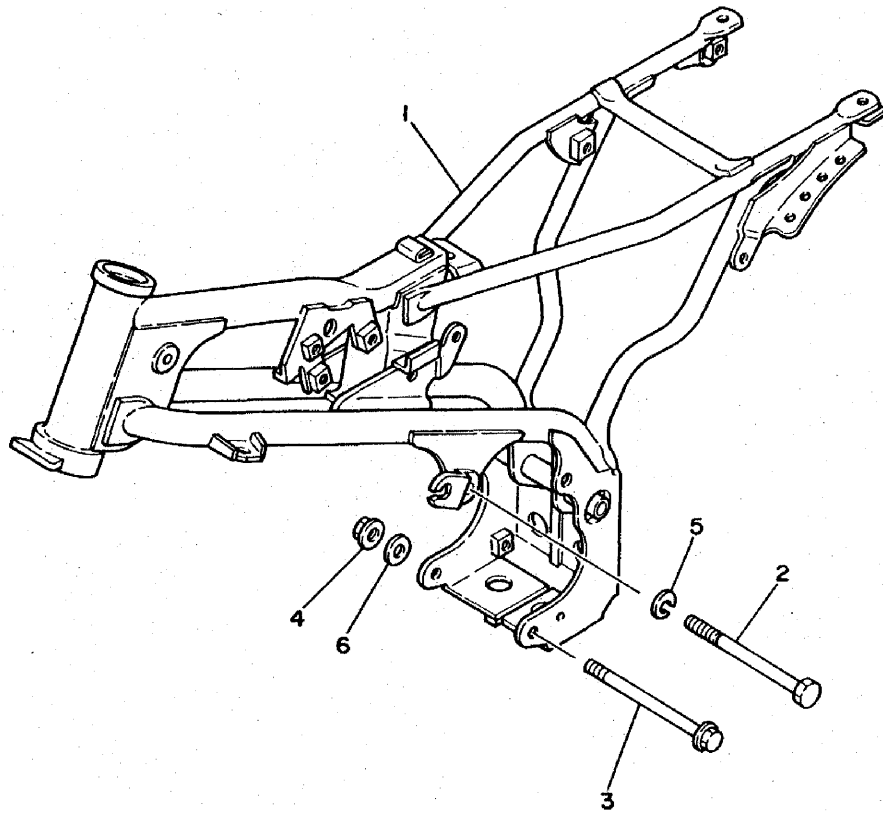


21W110-3140

C3

FIG. 15 FRAME

REF. NO.	PART NO.	DESCRIPTION	Q'TY	REMARKS
1	21W-21110-00-33	FRAME COMP.	1	yamaha black
2	90101-08286	BOLT	1	
3	95821-08120	BOLT, flange	2	
4	90179-08065	NUT	2	
5	92901-08100	WASHER, spring	1	
6	90201-081A6	WASHER, Plate	2	

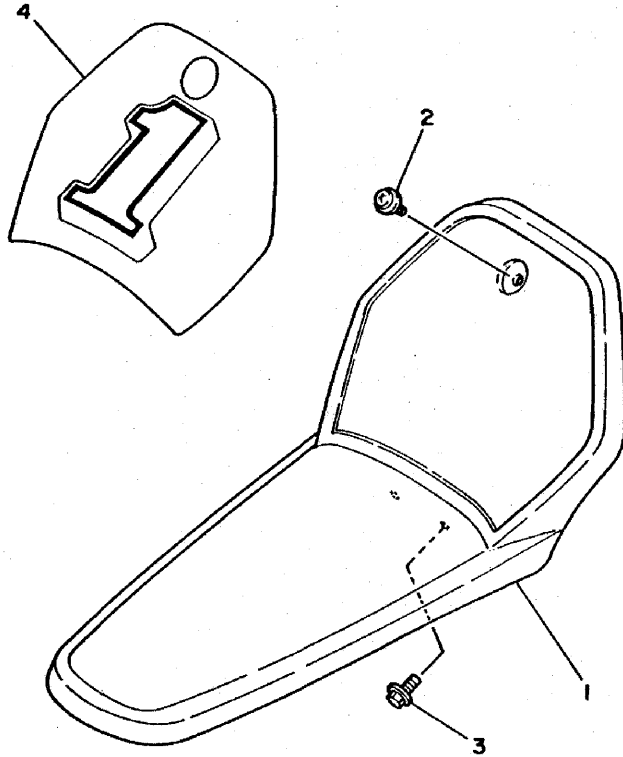


21W110-3150

C4

FIG. 16 FRONT FENDER

REF. NO.	PART NO.	DESCRIPTION	Q'TY	REMARKS
1	21W-21511-10	FENDER, front	1	
2	90159-06033	SCREW, with washer	1	
3	90119-06043	BOLT, with washer	2	
4	21W-21570-00	GRAPHIC SET, front fender	1	

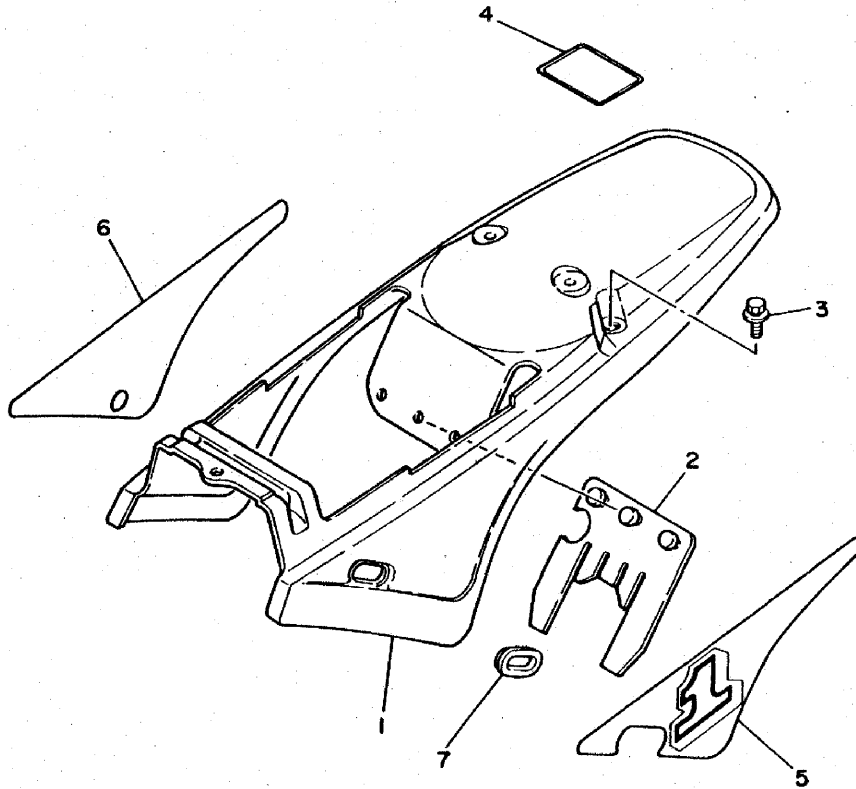


21W700-3160

C5

FIG. 17 SIDE COVER

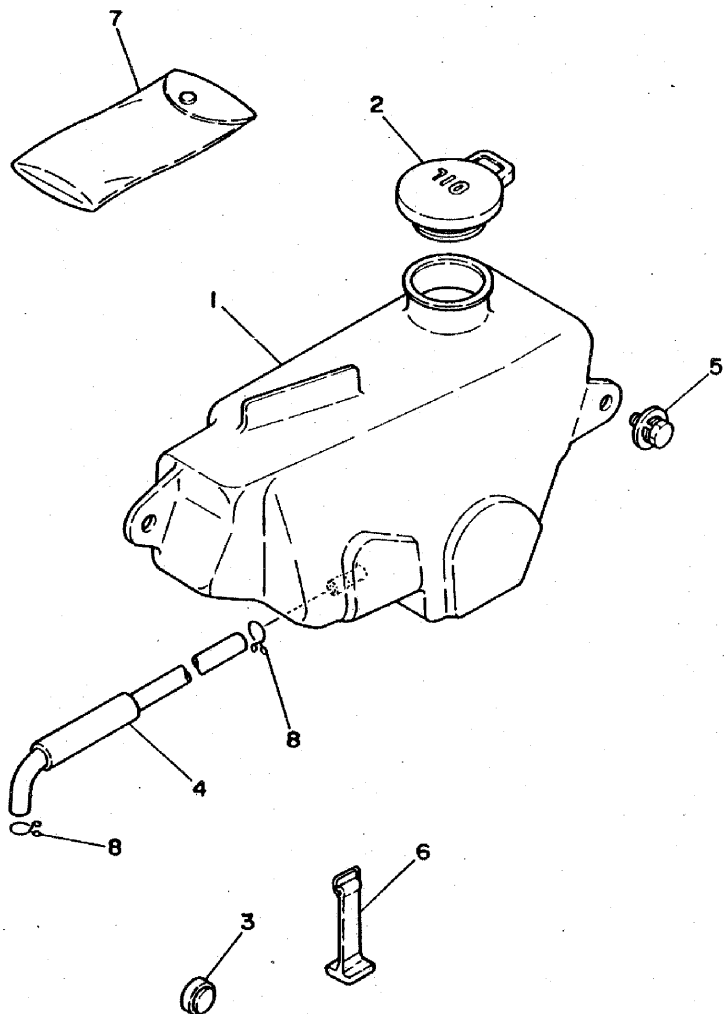
REF. NO.	PART NO.	DESCRIPTION	Q'TY	REMARKS
1	21W-21711-10	COVER, side 1	1	
2	21W-21621-00	FLAP	1	
3	90159-06016	SCREW, with washer	3	
4	21W-21659-00	LABEL, safety	1	
5	21W-21781-00	EMBLEM 1	1	
6	21W-21782-00	EMBLEM 2	1	
7	21W-21719-00	GROMMET	1	



21W700-3170

C6

FIG. 18 OIL TANK. TOOL



REF. NO.	PART NO.	DESCRIPTION	Q'TY	REMARKS
1	21W-21751-00	TANK, oil	1	
2	5R2-21771-00	BODY, caP	1	
3	431-24181-00	DAMPER, locating	1	
4	21W-21766-00	PIPE, oil	1	
5	90119-06056	BDLT, with washer	2	
6	21W-21646-00	BAND	2	
7	3R0-28100-00	TOOL KIT	1	
8	90467-08003	CLIP	2	

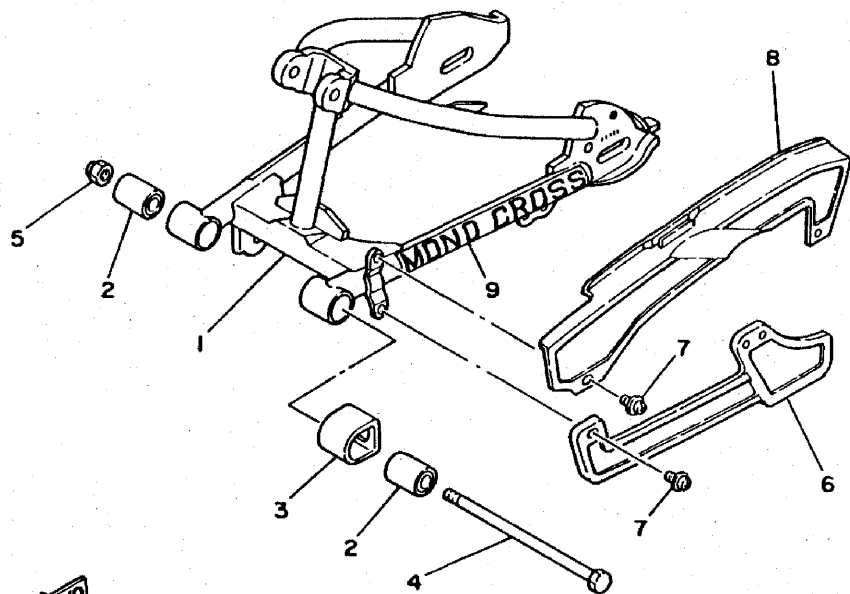
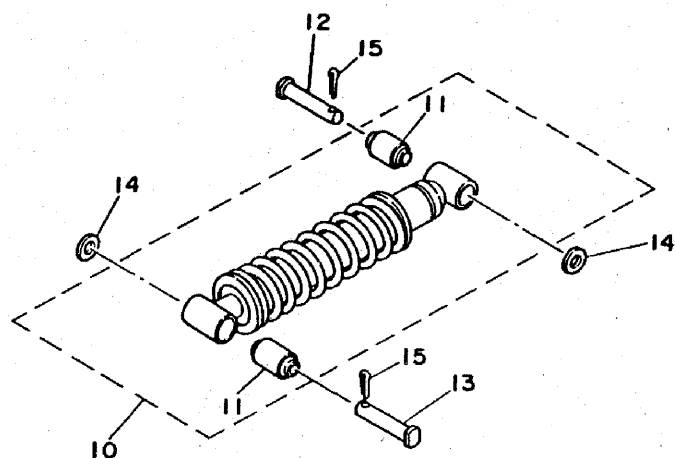


21W110-3180

C7

FIG. 19 REAR ARM SUSPENSION

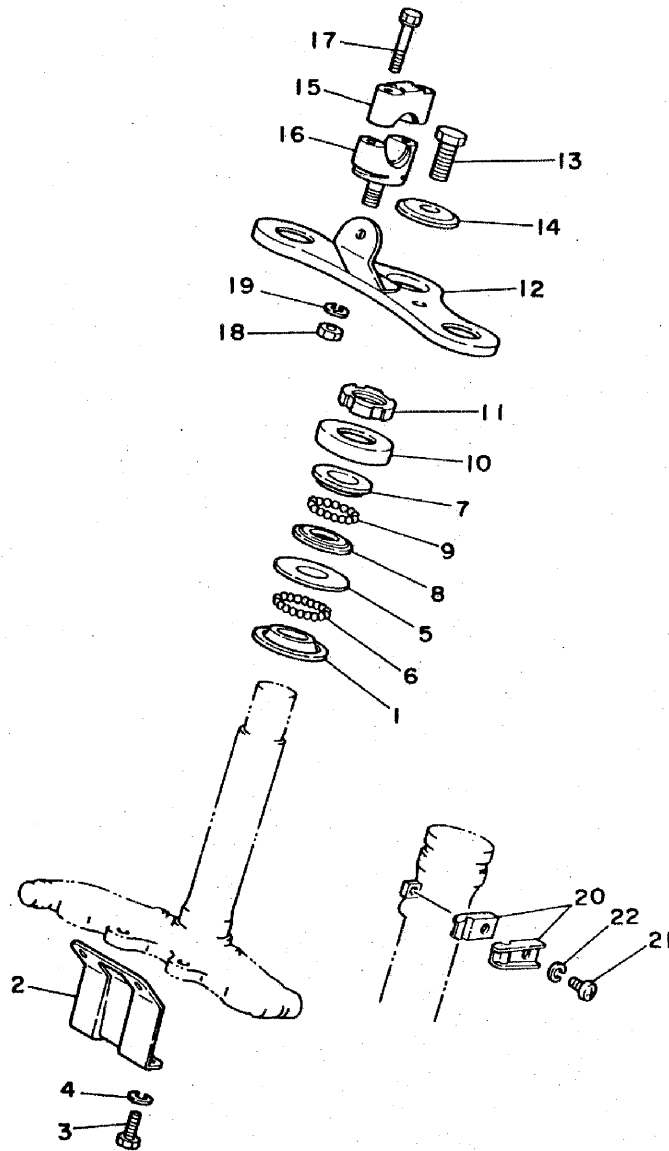
REF. NO.	PART NO.	DESCRIPTION	Q'TY	REMARKS
1	21W-22110-00-35	REAR ARM COMP.	1	silver
2	102-22123-00	BUSH 1	2	
3	3R0-22151-00	SEAL, Guard	1	
4	288-22141-00	SHAFT, Pivot	1	
5	90185-10037	NUT, self-locking	1	
6	21W-22199-00	SUPPORT, chain	1	
7	90159-05028	SCREW, with washer	5	
8	21W-22311-00	CASE, chain	1	
9	5X1-2218A-00	EMBLEM, rear arm	2	
10	21W-22210-00	SHOCK ABSORBER ASSY, rear	1	
11	3M7-22216-00	BUSH, rear shock absorber	2	
12	90240-10072	PIN, clevis	1	
13	90240-10069	PIN, clevis	1	
14	92901-10600	WASHER, Plate	2	
15	91401-25020	PIN, cotter	2	



21W171-3190

C8

FIG. 20 STEERING

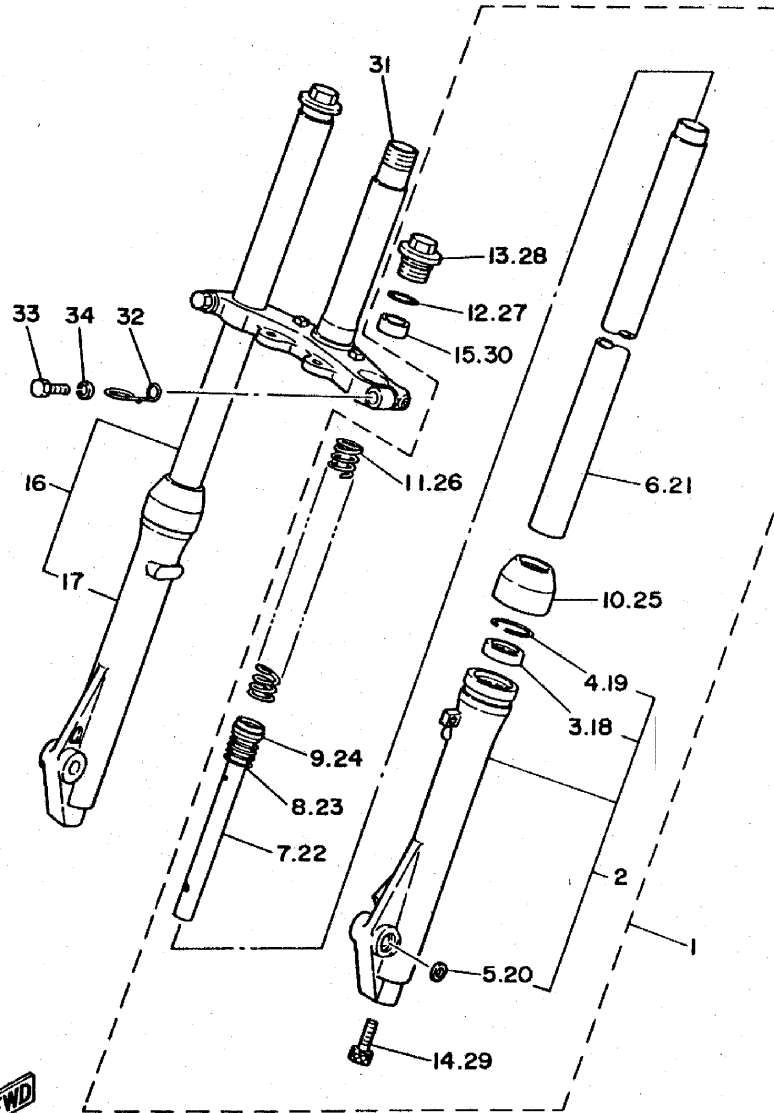


REF. NO.	PART NO.	DESCRIPTION	Q'TY	REMARKS
1	156-23411-00	RACE, ball 1	1	
2	21W-23486-00	STAY, Plate	1	
3	97301-06016	BOLT	2	
4	92901-06100	WASHER, sPring	2	
5	156-23412-00	RACE, ball 2	1	
6	93501-04011	BALL	19	
7	122-23411-00	RACE, ball 1	1	
8	122-23412-00	RACE, ball 2	1	
9	93503-16010	BALL	22	
10	122-23416-00	COVER, ball race 2	1	
11	90179-25051	NUT	1	
12	21W-23435-00	CROWN, handle	1	
13	90105-10006	BOLT, washer based	1	
14	90209-10021	WASHER	1	
15	462-23441-00	HOLDER, handle uPper	2	
16	122-23442-02	HOLDER, handle lower	2	
17	90119-06017	BOLT, with washer	4	
18	95301-10600	NUT	2	
19	92901-10100	WASHER, sPring	2	
20	90462-14055	CLAMP	2	
21	92501-06012	SCREW, Pan head	1	
22	92901-06100	WASHER, sPring	1	

21W110-3200

C9

FIG. 21 FRONT FORK



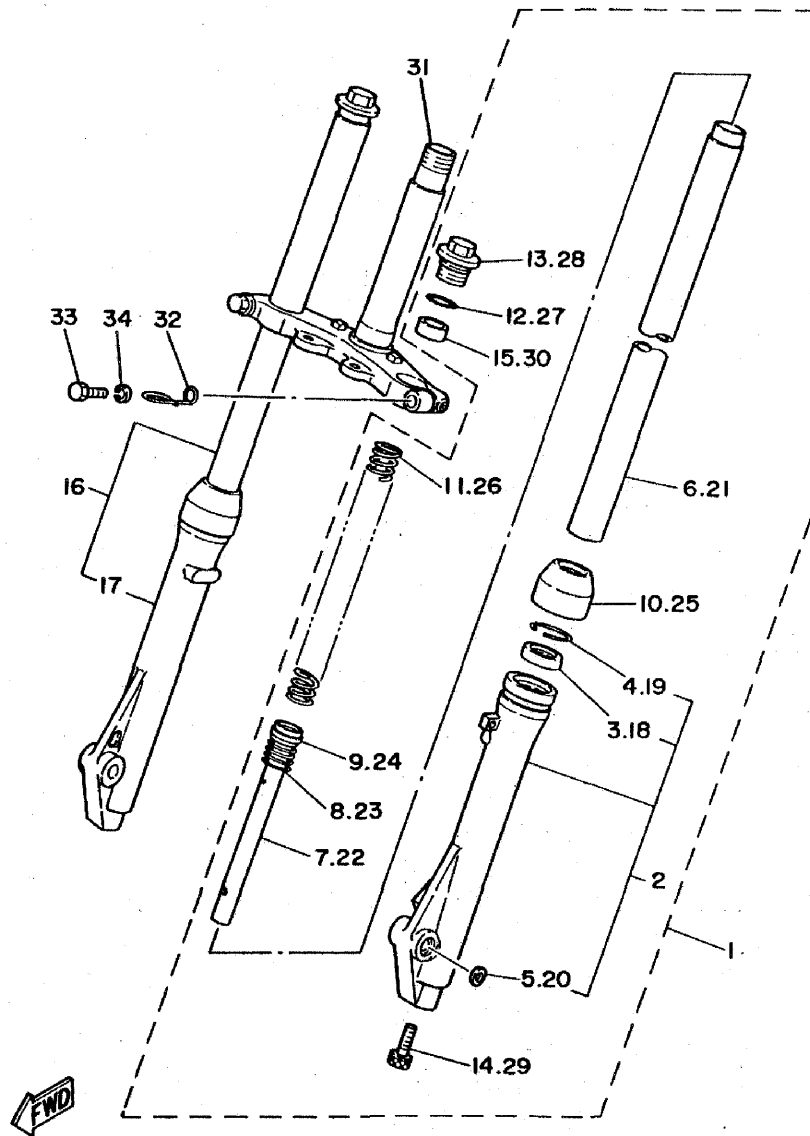
REF. NO.	PART NO.	DESCRIPTION	Q'TY	REMARKS
1	21W-23102-00	FRONT FORK ASSY (L.H)	1	
2	3R0-23126-00-39	•TUBE, outer 1	1	clear no buffing
3	3M7-23145-00	••OIL SEAL	1	
4	3M7-23156-00	••CLIP, oil seal	1	
5	3R0-23392-00	••WASHER, sPecial	1	
6	21W-23110-00	•INNER TUBE COMP.1	1	
7	3R0-23170-00	•CYLINDER COMP., front fork	1	
8	2J5-23151-00	•SPRING, rebound	1	
9	2J5-23157-00	•RING, Piston	1	
10	3M7-23144-00	•SEAL, dust	1	
11	21W-23141-00	•SPRING, front fork	1	
12	2J5-23147-00	•O-RING	1	
13	3M7-23111-01	•BOLT, caP	1	
14	3M7-23181-00	•BOLT, hexaEon socket head	1	
15	3M7-23142-00	•SEAT, sPring upper	1	
16	21W-23103-00	FRONT FORK ASSY (R.H)	1	
17	3R0-23136-00-39	•TUBE, outer 2	1	clear no buffing
18	3M7-23145-00	••OIL SEAL	1	
19	3M7-23156-00	••CLIP, oil seal	1	
20	3R0-23392-00	••WASHER, sPecial	1	
21	21W-23110-00	•INNER TUBE COMP.1	1	
22	3R0-23170-00	•CYLINDER COMP., front fork	1	
23	2J5-23151-00	•SPRING, rebound	1	
24	2J5-23157-00	•RING, Piston	1	
25	3M7-23144-00	•SEAL, dust	1	
26	21W-23141-00	•SPRING, front fork	1	
27	2J5-23147-00	•O-RING	1	
28	3M7-23111-01	•BOLT, caP	1	

21W110-3210

C10

FIG. 21 FRONT FORK

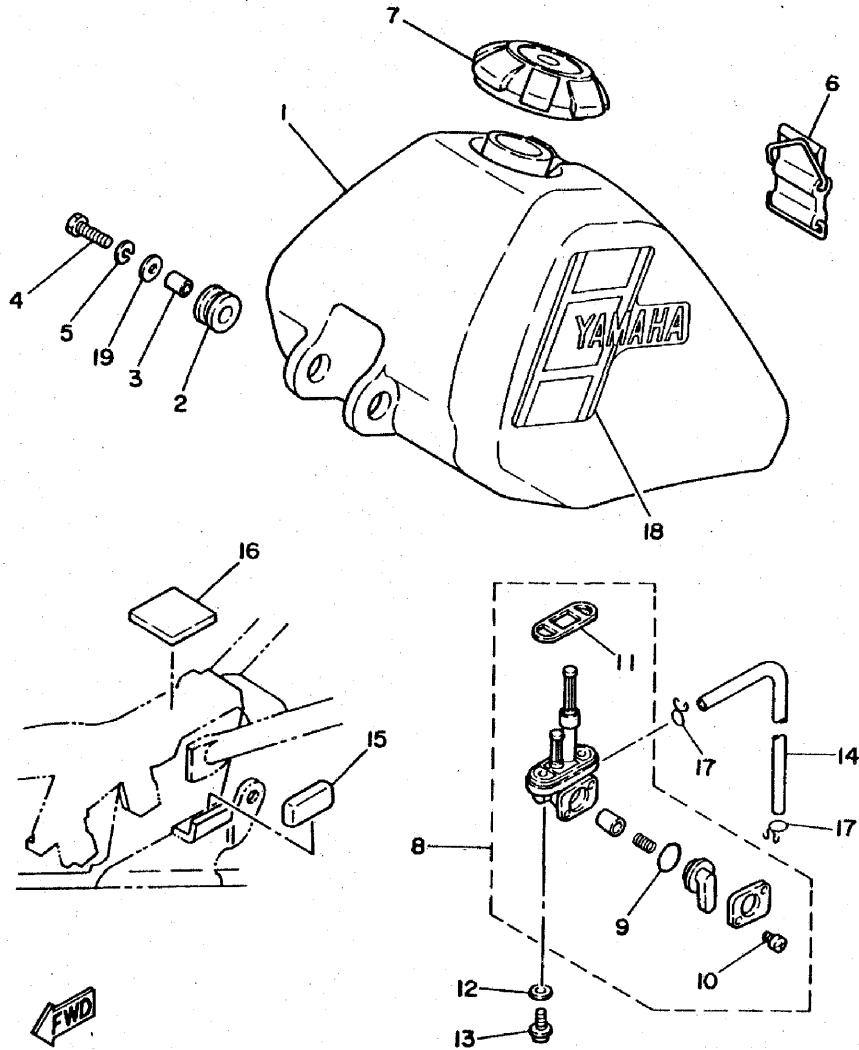
REF. NO.	PART NO.	DESCRIPTION	Q'TY	REMARKS
29	3M7-23181-00	•BOLT, hexa&on socket head	1	
30	3M7-23142-00	•SEAT, sPrin& uPPer	1	
31	21W-23340-00	UNDER BRACKET COMP.	1	
32	3R0-23318-00	HOLDER, cable 1	1	
33	451-23346-00	BOLT 1	2	
34	92901-10100	WASHER, sPrin&	2	



21W110-3210

C11

FIG. 22 FUEL TANK



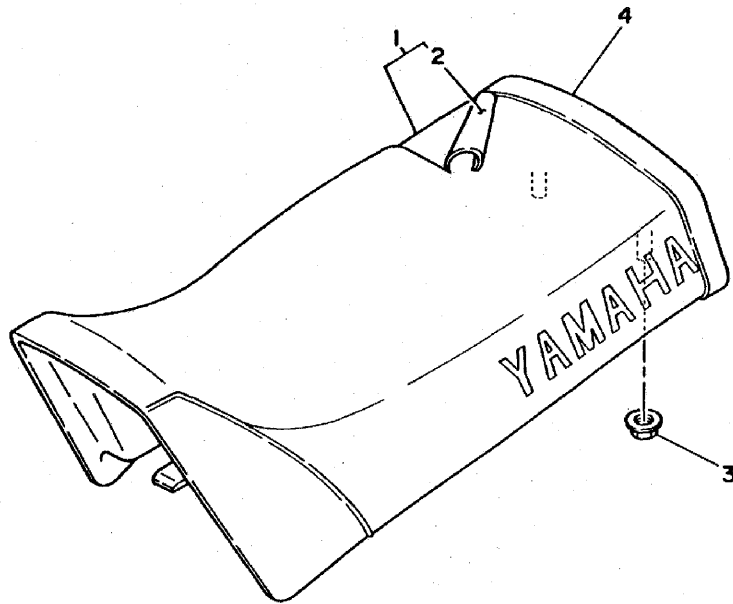
REF. NO.	PART NO.	DESCRIPTION	Q'TY	REMARKS
1	21W-24110-10	FUEL TANK COMP.	1	
2	90480-18290	GROMMET	2	
3	90387-07598	COLLAR	2	
4	97321-06030	BOLT	2	
5	92901-06100	WASHER, sPring	2	
6	3R3-24173-00	BAND, tank fitting 1	1	
7	4X4-24610-00	CAP ASSY	1	
8	21W-24500-00	FUEL COCK ASSY 1	1	
9	1A0-24512-00	O-RING	1	
10	619-24535-00	SCREW, lever fitting	1	
11	214-24512-00	GASKET	1	
12	90202-06010	WASHER, Plate	2	
13	90149-06011	SCREW	2	
14	90445-09082	HOSE	1	
15	21W-24181-00	DAMPER, locating 1	2	
16	2X6-24183-00	DAMPER, locating 3	1	
17	90467-08003	CLIP	2	
18	21W-24240-10	GRAPHIC SET	1	
19	90201-06072	WASHER, Plate	2	

21W110-3220

C12

FIG. 23 SEAT

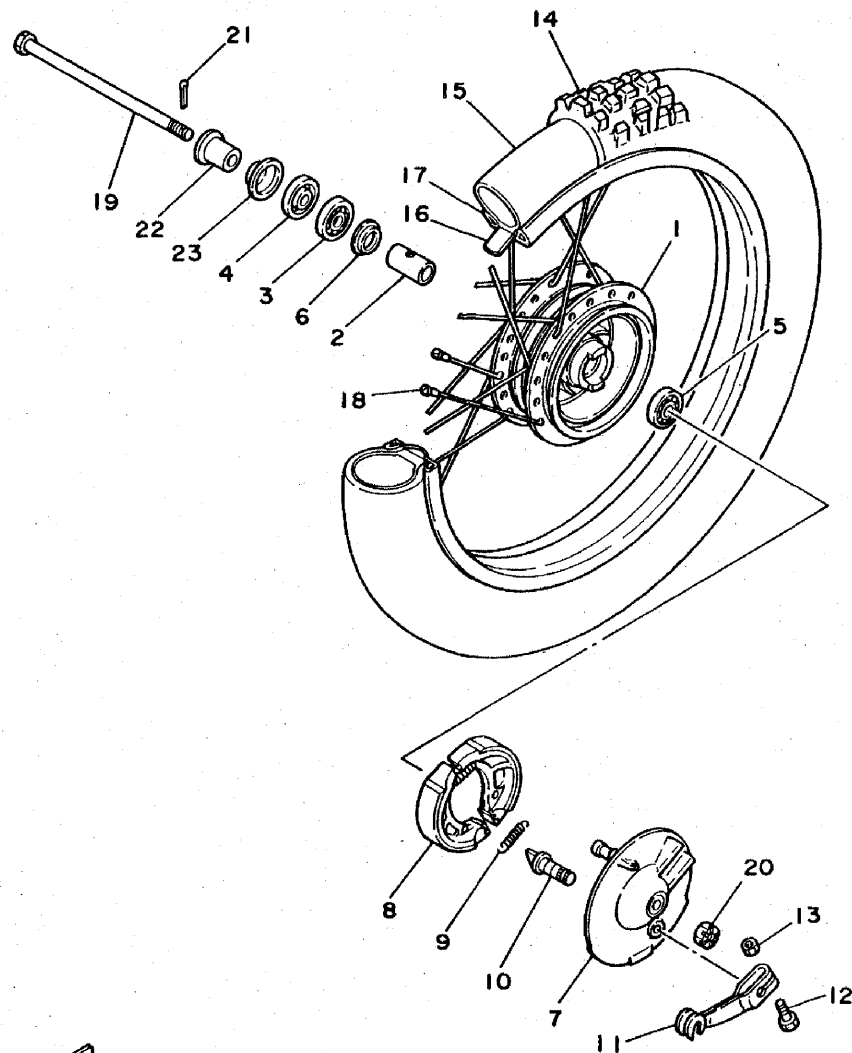
REF. NO.	PART NO.	DESCRIPTION	Q'TY	REMARKS
1	21W-24770-10	SEMI-DOUBLE SEAT ASSY	1	
2	21W-24731-10	COVER, double seat	1	
3	90179-06403	NUT	2	
4	21W-24734-10	BAND, seat	1	



21W110-3230

C13

FIG. 24 FRONT WHEEL

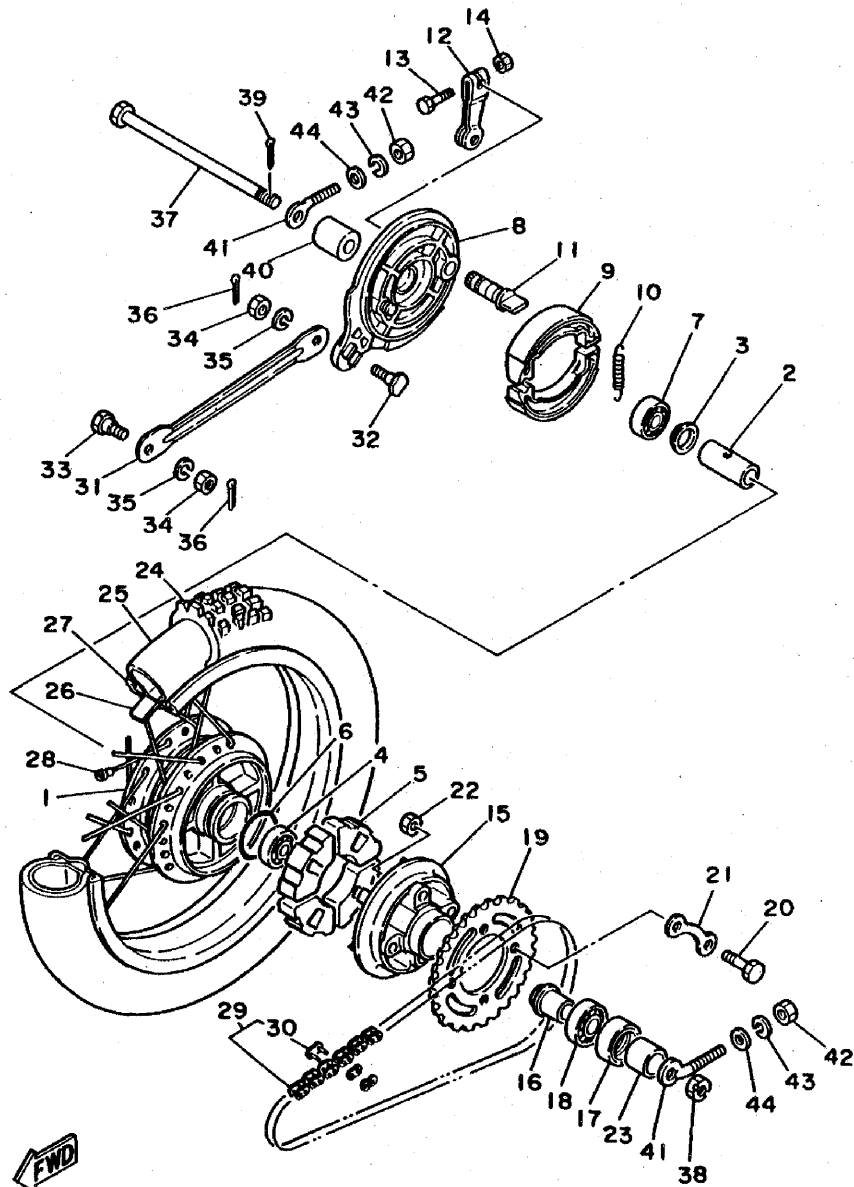


REF. NO.	PART NO.	DESCRIPTION	Q'TY	REMARKS
1	451-25111-00-98	HUB, front	1	low gloss black
2	90560-10103	SPACER	1	
3	93306-20004	BEARING (B6200)	1	
4	93106-17006	OIL SEAL	1	
5	93306-20009	BEARING (B6200RS)	1	
6	451-25115-00	FLANGE, sPacer 1	1	
7	3R0-25121-00-98	PLATE, brake shoe	1	low gloss black
8	451-25130-00	BRAKE SHOE COMP.	2	
9	90506-14081	SPRING, tension	2	
10	451-25151-00	CAMSHAFT	1	
11	451-25155-00	LEVER, camshaft 1	1	
12	90101-06291	BOLT	1	
13	95301-06600	NUT	1	
14	94125-141A6	TIRE (2.50-14)	1	
15	94225-14215	TUBE (2.50-14)	1	
16	94325-14129	BAND, rim (2.50-14)	1	
17	94414-14227	RIM (1.40-14)	1	
18	3R0-25104-00	SPOKE SET, front	1	
19	353-25181-03	AXLE, wheel	1	
20	90171-10004	NUT, castle	1	
21	91401-20020	PIN, cotter	1	
22	90387-10744	COLLAR	1	
23	451-25118-00	COVER, hub dust	1	

21W110-3240

C14

FIG. 25 REAR WHEEL

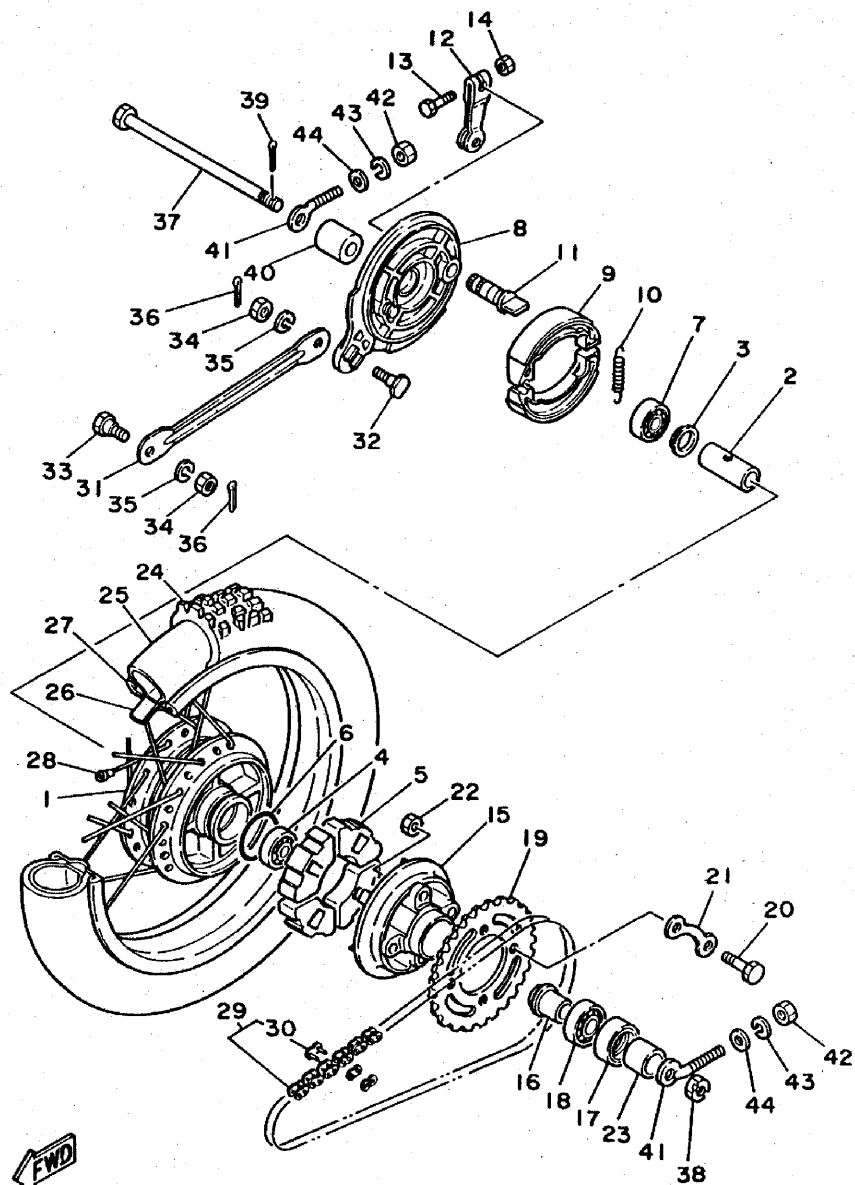


REF. NO.	PART NO.	DESCRIPTION	Q'TY	REMARKS
1	21W-25311-00-98	HUB, rear	1	low gloss black
2	90560-12145	SPACER	1	
3	102-25315-00	FLANGE, sPacer	1	
4	93306-30102	BEARING (B6301)	1	
5	21W-25364-00	DAMPER	4	
6	93210-41041	O-RING	1	
7	93306-30103	BEARING (B6301Z)	1	
8	1M3-25321-02-98	PLATE, brake shoe	1	low gloss black
9	18A-25330-00	BRAKE SHOE COMP.	2	
10	90506-18288	SPRING, tension	2	
11	3Y6-25351-00	CAMSHAFT	1	
12	538-25355-00	LEVER, camshaft	1	
13	90101-06278	BOLT	1	
14	95301-06600	NUT	1	
15	296-25366-01	CLUTCH, hub	1	
16	21W-25387-00	AXLE, sProcket	1	
17	93106-30004	OIL SEAL	1	
18	93306-00406	BEARING (B6004Z)	1	
19	21W-25432-10-33	SPROCKET, driven (32T)	1	yamaha black
20	90109-08057	BOLT	4	
21	102-25412-00	WASHER	2	
22	90170-08157	NUT	4	
23	90387-20763	COLLAR	1	
24	94130-121A7	TIRE (3.00-12)	1	
25	94227-12216	TUBE (2.75-12)	1	
26	94330-12130	BAND, rim (3.00-12)	1	
27	94416-12334	RIM (1.60-12)	1	
28	21W-25304-00	SPOKE SET, rear	1	

21W110-3250

C15

FIG. 25 REAR WHEEL

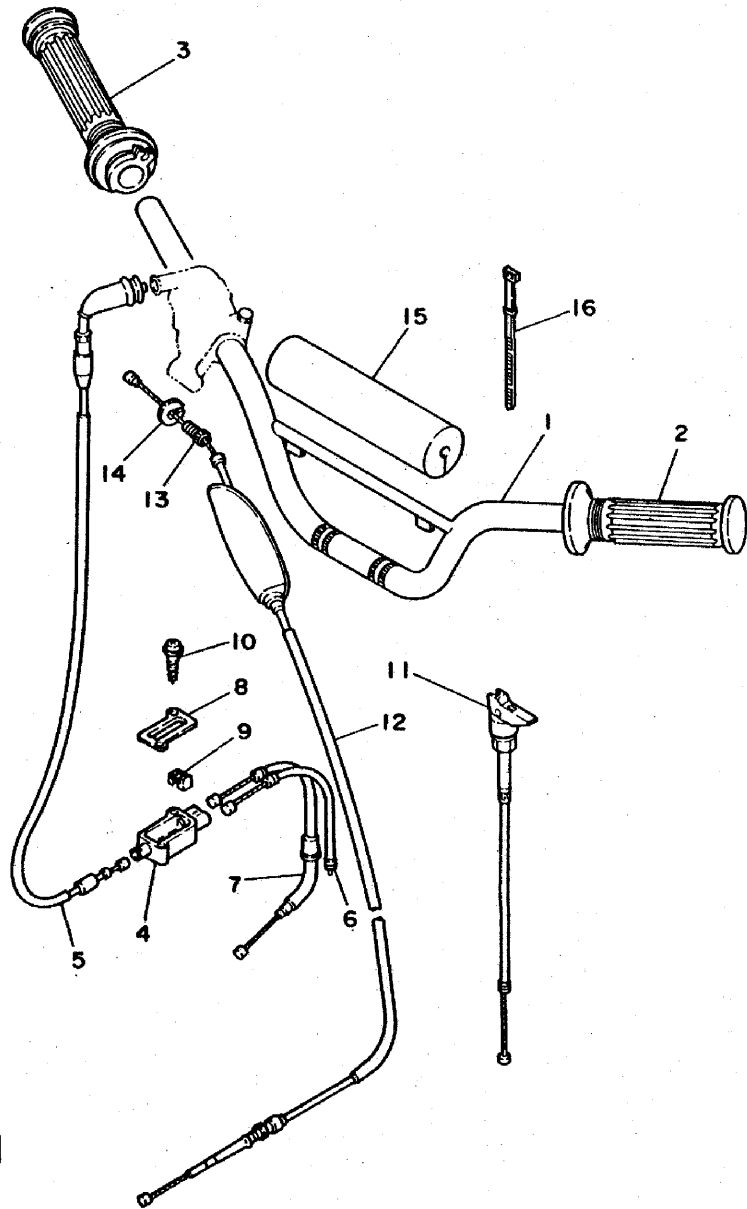


REF. NO.	PART NO.	DESCRIPTION	Q'TY	REMARKS
29	94580-13084	CHAIN	1	
30	94604-20001	.JOINT, chain	1	
31	21W-25371-00	BAR, tension	1	
32	90109-08183	BOLT	1	
33	90109-08368	BOLT	1	
34	95301-08700	NUT	2	
35	92901-08100	WASHER, sPring	2	
36	91401-20015	PIN, cotter	2	
37	367-25381-00	AXLE, wheel	1	
38	90171-12005	NUT, castle	1	
39	91401-30025	PIN, cotter	1	
40	90387-12412	COLLAR	1	
41	102-25389-00	PULLER, chain 2	2	
42	95301-06600	NUT	2	
43	92901-06100	WASHER, sPring	2	
44	92901-06600	WASHER, plate	2	

21W110-3250

D2

FIG. 26 HANDLEBAR-CABLE



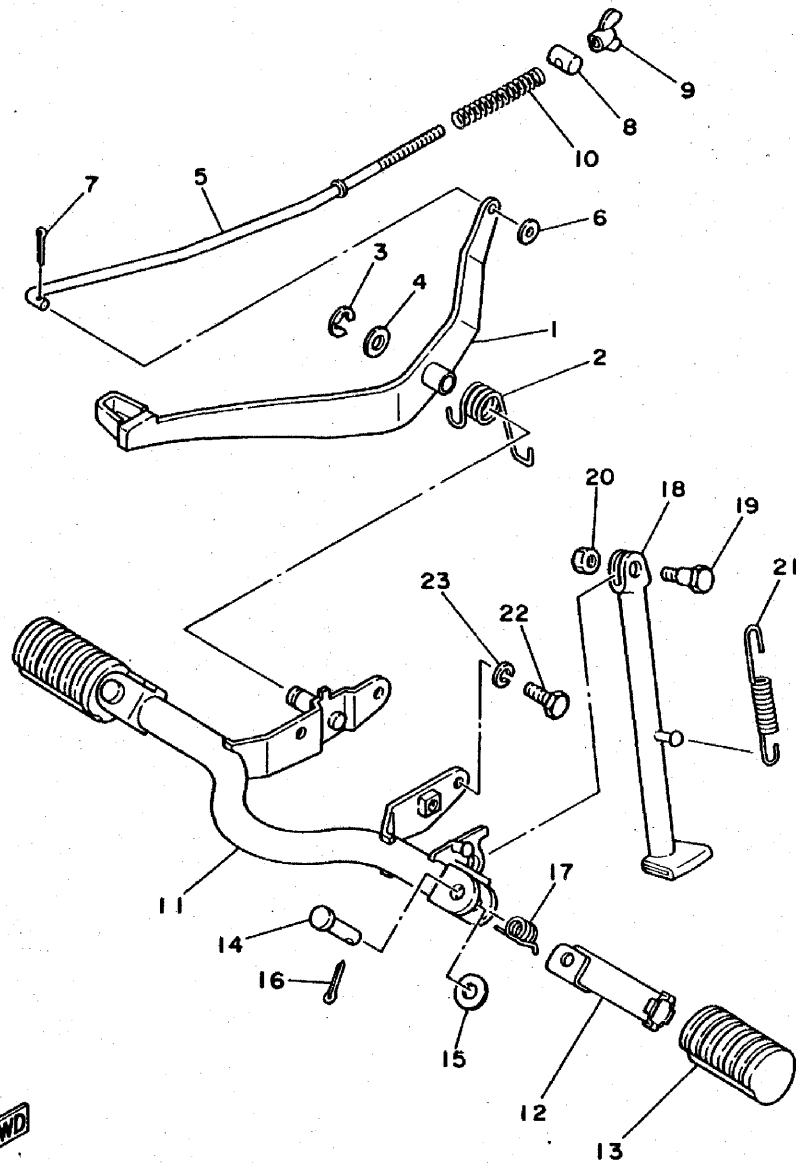
REF. NO.	PART NO.	DESCRIPTION	Q'TY	REMARKS
1	21W-26111-00	HANDLEBAR	1	
2	2N3-26241-00	GRIP (L.H)	1	
3	21W-26240-00	GRIP ASSY	1	
4	21W-26261-00	CONNECTOR, cable	1	
5	21W-26311-00	CABLE, throttle 1	1	
6	21W-26312-00	CABLE, throttle 2	1	
7	21W-26321-00	CABLE, Pump	1	
8	21W-26262-00	CAP, cable connector	1	
9	21W-26263-00	PIECE, connecting	1	
10	90167-03004	SCREW, tapping	2	
11	21W-26331-00	CABLE, starter 1	1	
12	21W-26341-00	CABLE, brake	1	
13	90123-08013	BOLT	1	
14	90179-08148	NUT	1	
15	21W-26124-00	PROTECTOR, handlebar	1	
16	437-83936-10	BAND, switch cord	2	



21W110-3260

D3

FIG. 27 STAND.FOOTREST



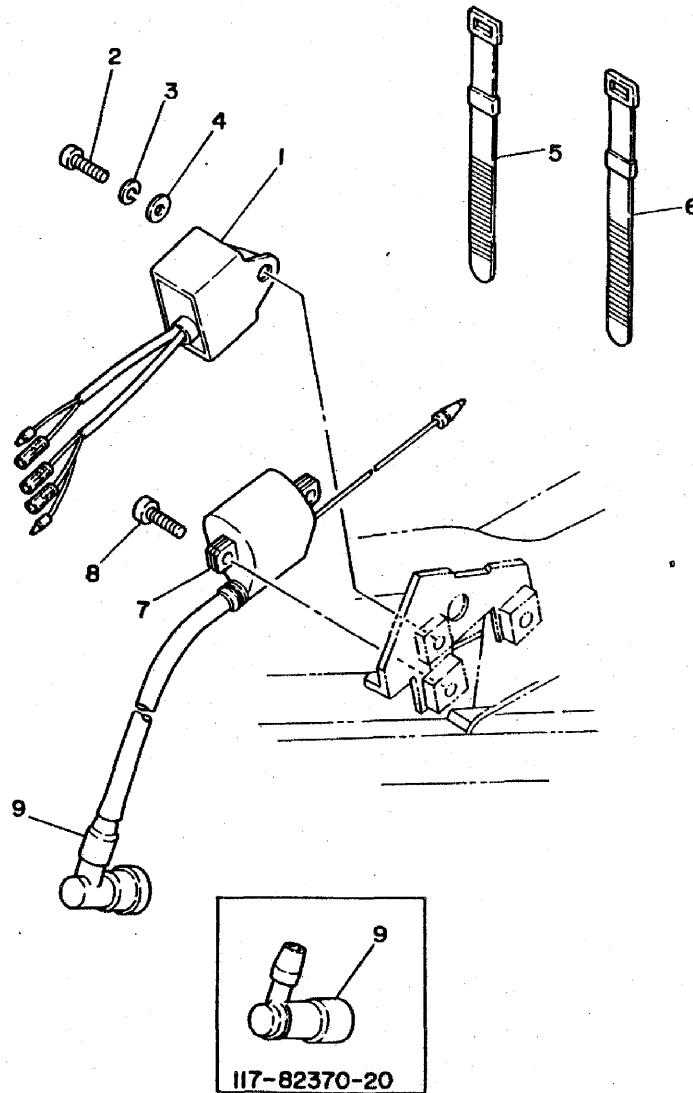
REF. NO.	PART NO.	DESCRIPTION	Q'TY	REMARKS
1	21W-27211-00	PEDAL, brake	1	
2	90508-29578	SPRING, torsion	1	
3	93430-09019	CIRCLIP	1	
4	92902-12600	WASHER, Plate	1	
5	21W-27231-00	ROD, brake	1	
6	92901-06600	WASHER, Plate	1	
7	91401-20015	PIN, cotter	1	
8	90249-12008	PIN	1	
9	90175-06013	NUT, wing	1	
10	90501-10245	SPRING, compression	1	
11	21W-27411-00	FOOTREST 1	1	
12	214-27421-00	FOOTREST 2	2	
13	214-27413-00	COVER, footrest	2	
14	90240-08084	PIN, clevis	2	
15	92901-08600	WASHER, Plate	2	
16	91401-25015	PIN, cotter	2	
17	90508-20023	SPRING, torsion	2	
18	21W-27311-00	STAND, side	1	
19	90109-08666	BOLT	1	
20	95301-08700	NUT	1	
21	90506-26270	SPRING, tension	1	
22	97321-08020	BOLT	2	
23	92901-08100	WASHER, spring	2	



21W110-3270

D4

FIG. 28 ELECTRICAL 1



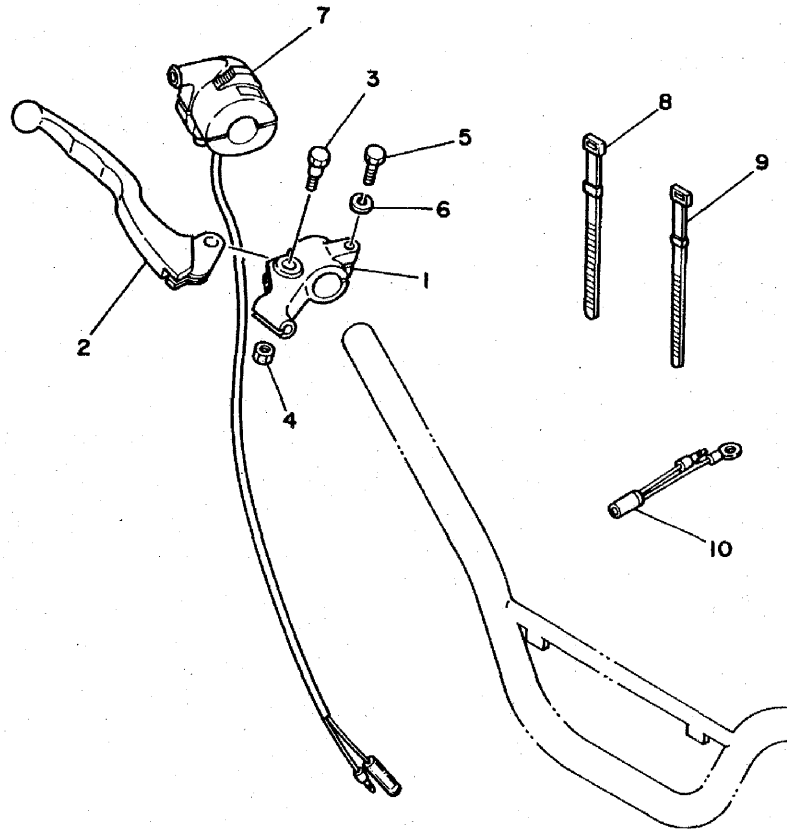
REF. NO.	PART NO.	DESCRIPTION	Q'TY	REMARKS
1	21W-85540-20	C.D.I. UNIT ASSY	1	
2	92501-06020	SCREW, Pan head	1	
3	92901-06100	WASHER, sPring	1	
4	92901-06600	WASHER, Plate	1	
5	437-83936-00	BAND, switch cord	1	
6	437-83936-10	BAND, switch cord	1	
7	21W-82310-40	IGNITION COIL ASSY	1	
8	92501-06020	SCREW, Pan head	2	
9	5R2-82370-20	PLUG CAP ASSY	1	UR with noise suppresser
	117-82370-20	PLUG CAP ASSY	1	UR



21W110-3280

D5

FIG. 29 HANDLE SWITCH-LEVER



REF. NO.	PART NO.	DESCRIPTION	Q'TY	REMARKS
1	233-82921-31	HOLDER, lever 2	1	
2	3R0-83922-01	LEVER 2	1	
3	90109-06410	BOLT	1	
4	95601-06100	NUT, u	1	
5	97301-06020	BOLT	1	
6	92901-06100	WASHER, sPring	1	
7	21W-83976-00	SWITCH, handle 1	1	
8	437-83936-00	BAND, switch cord	1	
9	437-83936-10	BAND, switch cord	1	
10	4V0-82519-00	WIRE, earth lead	1	



21W110-3290

D6

NUMERICAL INDEX

PART NO.	GRID NO.	PART NO.	GRID NO.
21W-11111-00	B 2	2E9-14185-00	B 7
463-11161-01	B 2	127-14186-00	B 7
21W-11162-00	B 2	296-14198-01	B 7
3E5-11162-00	B 2	21W-14411-10	B 6
1W7-11181-00	B 2	21W-14412-00	B 6
3E5-11311-01	B 2	21W-14451-00	B 6
300-11351-01	B 2	21W-14453-00	B 6
1W7-11400-01	B 3	21W-14454-00	B 6
1W7-11412-00	B 3	21W-14458-00	B 6
1W7-11422-01	B 3	21W-14498-00	B 6
3E5-11610-00	B 3	21W-14503-00	B 7
3E5-11610-10	B 3	21W-14610-01	B 9
3E5-11610-20	B 3	21W-14613-00	B 9
3E5-11631-00-97	B 3	21W-14708-00	B 9
527-11633-00	B 3	4X4-14714-00	B 9
3E5-11635-00	B 3	21W-14753-02	B 9
3E5-11636-00	B 3	21W-14758-00	B 9
1W7-11651-00	B 3	21W-1490J-00	B 7
2Y1-11681-00	B 3	1W7-15111-03	B10
3E5-13100-01	B 5	1W7-15121-03	B10
2T5-13124-00	B 5	300-15128-00	B10
384-13138-00	B 5	296-15316-00	B10
296-13147-00	B 5	517-15362-01	B11
384-13161-02	B 5	21W-15411-00	B11
384-13174-00	B 5	517-15416-01	B10
2W9-13178-00	B 5	21W-15421-00	B11
21W-13555-00	B 6	517-15451-01	B11
300-13610-01	B 6	21W-15491-01	B11
300-13613-02	B 6	156-15618-01	B12
300-13616-00	B 6	21W-15620-00	B12
300-13621-01	B 6	384-15635-00	B13
300-13622-02	B 6	2T4-15637-00	B13
21W-14101-00	B 7	3E5-15641-00	B12
12G-14103-00	B 7	3E5-15660-00	B12
12G-14104-00	B 7	3E5-15664-00	B12
21W-14107-12	B 7	3E5-15676-00	B12
296-14112-25	B 7	1W7-16110-00-20	B13
296-14117-00	B 7	1W7-16110-00-30	B13
296-14131-00	B 7	1W7-16110-00-40	B13
127-14135-00	B 7	3E5-16150-00-20	B13
127-14141-14	B 7	3E5-16150-00-30	B13
193-14142-15	B 7	3E5-16150-00-40	B13
127-14143-24	B 7	122-16164-00	B14
127-14143-25	B 7	517-16180-00	B13
127-14143-26	B 7	132-16346-00	C 2
1R0-14169-00	B 7	527-16520-10	B13
307-14169-10	B 7	116-16521-00	B13
127-14171-00	B 7	3E5-16521-00	B13
296-14184-01	B 7		

PART NO.	GRID NO.	PART NO.	GRID NO.
517-16524-10	B13	517-16524-20	B13
517-16524-30	B13	517-16550-10	B13
517-16550-10	B13	517-16561-01	B13
517-16561-01	B13	527-16571-00	B13
1W7-17211-12	B15	1W7-17221-20	B15
1W7-17221-20	B15	21W-17231-00	B15
21W-17231-00	B15	21W-17410-00	B15
21W-17410-00	B15	1W7-17421-10	B15
1W7-17421-10	B15	517-17461-52	B15
517-17461-52	B15	296-17471-00	B15
296-17471-00	B15	4G2-18101-00	C 3
4G2-18101-00	C 3	21W-18111-00	C 3
21W-18111-00	C 3	132-18113-01	C 3
132-18113-01	C 3	278-18127-00	C 3
278-18127-00	C 3	296-18140-02	C 2
296-18140-02	C 2	1W7-18511-01	C 2
1W7-18511-01	C 2	1W7-18512-02	C 2
1W7-18512-02	C 2	2N8-18531-00	C 2
2N8-18531-00	C 2	21W-18540-01	C 2
21W-18540-01	C 2	296-18561-00	C 2
296-18561-00	C 2	296-18562-01	C 2
296-18562-01	C 2	21W-21110-00-33	C 4
21W-21110-00-33	C 4	21W-21511-10	C 5
21W-21511-10	C 5	21W-21570-00	C 5
21W-21570-00	C 5	21W-21621-00	C 6
21W-21621-00	C 6	21W-21646-00	C 7
21W-21646-00	C 7	21W-21659-00	C 6
21W-21659-00	C 6	21W-21711-10	C 6
21W-21711-10	C 6	21W-21719-00	C 6
21W-21719-00	C 6	21W-21751-00	C 7
21W-21751-00	C 7	21W-21766-00	C 7
21W-21766-00	C 7	5R2-21771-00	C 7
5R2-21771-00	C 7	21W-21781-00	C 6
21W-21781-00	C 6	21W-21782-00	C 6
21W-21782-00	C 6	21W-22110-00-35	C 8
21W-22110-00-35	C 8	102-22123-00	C 8
102-22123-00	C 8	288-22141-00	C 8
288-22141-00	C 8	3R0-22151-00	C 8
3R0-22151-00	C 8	5X1-2218A-00	C 8
5X1-2218A-00	C 8	21W-22199-00	C 8
21W-22199-00	C 8	21W-22210-00	C 8
21W-22210-00	C 8	3M7-22216-00	C 8
3M7-22216-00	C 8	21W-22311-00	C 8
21W-22311-00	C 8	21W-23102-00	C10
21W-23102-00	C10	21W-23103-00	C10
21W-23103-00	C10	21W-23110-00	C10

NUMERICAL INDEX

PART NO.	GRID NO.	PART NO.	GRID NO.
3M7-23111-01	C10	3R0-23126-00-39	C10
3R0-23126-00-39	C10	3R0-23136-00-39	C10
3R0-23136-00-39	C10	21W-23141-00	C10
21W-23141-00	C10	3M7-23142-00	C10
3M7-23142-00	C10		C11
	C11	3M7-23144-00	C10
3M7-23144-00	C10	3M7-23145-00	C10
3M7-23145-00	C10	2J5-23147-00	C10
2J5-23147-00	C10		C10
	C10	2J5-23151-00	C10
2J5-23151-00	C10	3M7-23156-00	C10
3M7-23156-00	C10	2J5-23157-00	C10
2J5-23157-00	C10	3R0-23170-00	C10
3R0-23170-00	C10	3M7-23181-00	C10
3M7-23181-00	C10		C11
	C11	3R0-23318-00	C11
3R0-23318-00	C11	21W-23340-00	C11
21W-23340-00	C11	451-23346-00	C11
451-23346-00	C11		C10
	C10	3R0-23392-00	C10
3R0-23392-00	C10	122-23411-00	C 9
122-23411-00	C 9	156-23411-00	C 9
156-23411-00	C 9	122-23412-00	C 9
122-23412-00	C 9	156-23412-00	C 9
156-23412-00	C 9	122-23416-00	C 9
122-23416-00	C 9	21W-23435-00	C 9
21W-23435-00	C 9	462-23441-00	C 9
462-23441-00	C 9	122-23442-02	C 9
122-23442-02	C 9	21W-23486-00	C 9
21W-23486-00	C 9	21W-24110-10	C12
21W-24110-10	C12	3R3-24173-00	C12
3R3-24173-00	C12	21W-24181-00	C12
21W-24181-00	C12	431-24181-00	C 7
431-24181-00	C 7	2X6-24183-00	C12
2X6-24183-00	C12	21W-24240-10	C12
21W-24240-10	C12	21W-24500-00	C12
21W-24500-00	C12	1A0-24512-00	C12
1A0-24512-00	C12	214-24512-00	C12
214-24512-00	C12	619-24535-00	C12
619-24535-00	C12	4X4-24610-00	C12
4X4-24610-00	C12	21W-24731-10	C13
21W-24731-10	C13	21W-24734-10	C13
21W-24734-10	C13	21W-24770-10	C13
21W-24770-10	C13	3R0-25104-00	C14
3R0-25104-00	C14	451-25111-00-98	C14
451-25111-00-98	C14	451-25115-00	C14
451-25115-00	C14		

PART NO.	GRID NO.	PART NO.	GRID NO.
451-25118-00	C14	3R0-25121-00-98	C14
3R0-25121-00-98	C14	451-25130-00	C14
451-25130-00	C14	451-25151-00	C14
451-25151-00	C14	451-25155-00	C14
451-25155-00	C14	353-25181-03	C14
353-25181-03	C14	21W-25304-00	C15
21W-25304-00	C15	21W-25311-00-98	C15
21W-25311-00-98	C15	102-25315-00	C15
102-25315-00	C15	1M3-25321-02-98	C15
1M3-25321-02-98	C15	18A-25330-00	C15
18A-25330-00	C15	3Y6-25351-00	C15
3Y6-25351-00	C15	538-25355-00	C15
538-25355-00	C15	21W-25364-00	C15
21W-25364-00	C15	296-25366-01	C15
296-25366-01	C15	21W-25371-00	D 2
21W-25371-00	D 2	367-25381-00	D 2
367-25381-00	D 2	21W-25387-00	C15
21W-25387-00	C15	102-25389-00	D 2
102-25389-00	D 2	102-25412-00	C15
102-25412-00	C15	21W-25432-10-33	C15
21W-25432-10-33	C15	21W-26111-00	D 3
21W-26111-00	D 3	21W-26124-00	D 3
21W-26124-00	D 3	21W-26240-00	D 3
21W-26240-00	D 3	2N3-26241-00	D 3
2N3-26241-00	D 3	21W-26261-00	D 3
21W-26261-00	D 3	21W-26262-00	D 3
21W-26262-00	D 3	21W-26263-00	D 3
21W-26263-00	D 3	21W-26311-00	D 3
21W-26311-00	D 3	21W-26312-00	D 3
21W-26312-00	D 3	21W-26321-00	D 3
21W-26321-00	D 3	21W-26331-00	D 3
21W-26331-00	D 3	21W-26341-00	D 3
21W-26341-00	D 3	21W-27211-00	D 4
21W-27211-00	D 4	21W-27231-00	D 4
21W-27231-00	D 4	21W-27311-00	D 4
21W-27311-00	D 4	21W-27411-00	D 4
21W-27411-00	D 4	214-27413-00	D 4
214-27413-00	D 4	214-27421-00	D 4
214-27421-00	D 4	3R0-28100-00	C 7
3R0-28100-00	C 7	104-81328-20	B 4
104-81328-20	B 4	21W-82310-40	D 5
21W-82310-40	D 5	117-82370-20	D 5
117-82370-20	D 5	5R2-82370-20	D 5
5R2-82370-20	D 5	4V0-82519-00	D 6
4V0-82519-00	D 6	233-82921-31	D 6
233-82921-31	D 6	3R0-83922-01	D 6
3R0-83922-01	D 6	437-83936-00	D 5
437-83936-00	D 5		

PART NO.	GRID NO.	PART NO.	GRID NO.
437-83936-00	D 6	437-83936-10	D 3
437-83936-10	D 3		D 5
	D 5		D 6
	D 6	21W-83976-00	D 6
21W-83976-00	D 6	21W-85510-20	B 4
21W-85510-20	B 4	21W-85512-20	B 4
21W-85512-20	B 4	21W-85540-20	D 5
21W-85540-20	D 5	21W-85550-20	B 4
21W-85550-20	B 4	90101-06278	C15
90101-06278	C15	90101-06291	C14
90101-06291	C14	90101-06394	B10
90101-06394	B10	90101-08286	C 4
90101-08286	C 4	90105-10006	C 9
90105-10006	C 9	90105-10147	B10
90105-10147	B10	90109-06001	C 2
90109-06001	C 2	90109-06410	D 6
90109-06410	D 6	90109-08057	C15
90109-08057	C15	90109-08183	D 2
90109-08183	D 2	90109-08368	D 2
90109-08368	D 2	90109-08629	B 9
90109-08629	B 9	90109-08666	D 4
90109-08666	D 4	90116-07035	B 2
90116-07035	B 2	90119-06017	C 9
90119-06017	C 9	90119-06043	C 5
90119-06043	C 5	90119-06056	C 7
90119-06056	C 7	90123-08013	D 3
90123-08013	D 3		
		90149-06011	C12
90149-06011	C12	90149-06157	B10
90149-06157	B10	90157-05003	B 9
90157-05003	B 9	90159-05028	C 8
90159-05028	C 8	90159-06016	C 6
90159-06016	C 6	90159-06033	C 5
90159-06033	C 5	90167-03004	D 3
90167-03004	D 3	90170-07019	B 2
90170-07019	B 2	90170-08157	C15
90170-08157	C15	90170-10105	B 5
90170-10105	B 5		

NUMERICAL INDEX

PART NO.	GRID NO.	PART NO.	GRID NO.
90201-06072	C12	90501-10602	B13
90201-07653	B 2	90501-12088	B13
90201-081A6	C 4	90506-08122	C 3
90201-12317	B13	90506-10184	C 2
90201-12575	C 3	90506-14081	C14
90201-15701	B12	90506-18288	C15
90201-20266	B12	90506-26270	D 4
90202-06010	C12	90508-20023	D 4
90208-12015	B13	90508-26136	B12
90208-16019	B14	90508-29578	D 4
90209-10021	C 9	90508-32263	C 3
90209-15178	B15	90560-10103	C14
90209-15179	B15	90560-12145	C15
90209-15180	B15	90560-17124	B14
90209-20159	B 3	91401-20015	D 2
90240-08084	D 4		D 4
90240-10069	C 8	91401-20020	C14
90240-10072	C 8	91401-25015	D 4
90249-12008	D 4	91401-25020	C 8
90267-40080	B 6	91401-30025	D 2
90280-03017	B 3	91830-21014	B11
90340-12005	B10	91830-22016	B10
90387-07598	C12	92501-06012	B15
90387-10744	C14		C 9
90387-12412	D 2	92501-06014	C 2
90387-20603	B 3	92501-06020	D 5
90387-207G3	C15	92501-06030	B 6
90401-10029	B 5	92501-06035	B10
90430-04004	B 5	92501-06045	B10
90430-04167	B 9	92501-06050	B10
90430-05008	B 9	92501-08010	B10
90430-10031	B10	92506-06012	B11
90430-12038	B10	92506-06035	B11
90445-05390	B 7	92506-06040	B11
90445-07036	B 8	92506-06045	B11
90445-09082	C12	92506-06100	B11
90460-37130	B 6	92901-04600	B 4
90462-14055	C 9		B 6
90467-08003	C 7	92901-06100	C 9
	C12		C 9
90467-22048	B 9		D 2
90468-02033	B 5		D 5
90468-16090	B13		D 6
90468-23093	B12	92901-06600	D 2
90480-10005	B 5		D 4
90480-18290	C12		D 5
90480-21038	B10	92901-08100	B 9
90501-10245	D 4		C 4

NUMERICAL INDEX

PART NO.	GRID NO.	PART NO.	GRID NO.	PART NO.	GRID NO.	PART NO.	GRID NO.
92901-08100	D 2	93430-10016	C 3	98502-04008	B 4		
	D 4	93440-15012	B15	98502-05030	B 7		
92901-08600	B 9	93450-13022	B 3	98503-04010	B 7		
	D 4	93450-28049	B15	98506-05025	B 6		
92901-10100	C 9	93451-11037	B13	98506-05050	B 6		
	C11	93501-04011	C 9	98701-05016	B 4		
		93503-16010	C 9	98901-04008	B 5		
92901-10600	C 8	93505-08030	B13				
92901-12100	B 3	93509-32012	B15				
92901-12600	B 3	93603-08072	B 5				
92902-04100	B 4	93603-14026	B 5				
92902-12600	D 4	93604-22050	C 2				
92906-05600	B 6	93606-14081	C 2				
92906-08600	B 6	94125-141A6	C14				
93101-10001	B 5	94130-121A7	C15				
93101-12004	C 3	94225-14215	C14				
93102-20143	B15	94227-12216	C15				
93103-25098	B 3	94325-14129	C14				
93103-32099	B 3	94330-12130	C15				
93104-11053	B11	94414-14227	C14				
93106-17006	C14	94416-12334	C15				
93106-30004	C15	94580-13084	D 2				
93109-15001	B12	94604-20001	D 2				
93210-08006	C 2	94701-00108	B 2				
93210-18023	B 3	94701-00175	B 2				
93210-21190	B11	95301-05600	B 7				
93210-26240	B 5	95301-06600	C14				
93210-41041	C15		C15				
93210-98202	B13		D 2				
93306-00406	C15	95301-08700	D 2				
93306-20004	C14		D 4				
93306-20009	C14	95301-10600	C 9				
93306-20316	B15	95311-12600	B 3				
93306-20401	B15	95601-06100	D 6				
93306-20529	B 3	95821-08120	C 4				
93306-30102	C15	97301-06016	C 9				
93306-30103	C15	97301-06020	D 6				
93310-11268	B 3	97301-08016	B 9				
93310-420F2	B 3	97306-08016	B 6				
93315-23208	C 2	97311-06025	B12				
93320-41202	B15	97321-06020	C 3				
93410-17008	B12	97321-06030	C12				
93410-20009	B12	97321-08020	D 4				
93410-20038	B15	98501-03008	B 6				
93430-03013	B13	98501-04016	B 7				
93430-07012	B 5	98501-04025	B 4				
93430-09019	C 2	98501-05008	B 7				
	D 4	98501-05020	B 5				
93430-10016	C 2	98501-05035	B 5				

PARTS NAME INDEX

DESCRIPTION	GRID NO.
ABSORBER 1	B 2
ABSORBER 2	B 2
*	B 2
ADJUST SCREW SET	B 7
AIR SCREW SET	B 7
AXLE, drive	B15
AXLE, sProcket	C15
AXLE, wheel	C14
*	D 2
BALL	B13
*	B15
*	C 9
*	C 9
BAND	C 7
BAND, rim (2.50-14)	C14
BAND, rim (3.00-12)	C15
BAND, seat	C13
BAND, switch cord	D 3
*	D 5
*	D 5
*	D 6
*	D 6
BAND, tank fitting 1	C12
BAR, shift fork guide 1	C 2
BAR, tension	D 2
BEARING	B15
BEARING (B6004Z)	C15
BEARING (B6200)	C14
BEARING (B6200RS)	C14
BEARING (B6203)	B15
BEARING (B6204)	B15
BEARING (B6205C4)	B 3
BEARING (B6301)	C15
BEARING (B6301Z)	C15
BEARING, cylindrical	B 3
*	B 3
*	C 2
BODY, caP	C 7
BOLT	B 6
*	B 9
*	B 9
*	B 9
*	B 9
*	B10
*	B12
*	C 2
*	C 3
*	C 4
*	C 9

PARTS NAME INDEX

DESCRIPTION	GRID NO.
BOLT	C12
*	C14
*	C15
*	C15
*	D 2
*	D 2
*	D 3
*	D 4
*	D 4
*	D 6
*	D 6
BOLT 1	C11
*	C10
BOLT, caP	C10
*	C10
BOLT, flange	C 4
BOLT, hexagon socket head	C10
*	C11
BOLT, stud	B 2
BOLT, union	B 5
BOLT, washer based	B10
*	C 9
BOLT, with washer	C 5
*	C 7
*	C 9
BOSS, clutch	B13
BRAKE SHOE COMP.	C14
*	C15
BUSH 1	C 8
BUSH, rear shock absorber	C 8
C.D.I. UNIT ASSY	D 5
CABLE, brake	D 3
CABLE, Pump	D 3
CABLE, starter 1	D 3
CABLE, throttle 1	D 3
CABLE, throttle 2	D 3
CAMSHAFT	C14
*	C15
CAP	B 7
*	B 7
CAP ASSY	C12
CAP, cable connector	D 3
CAP, cleaner case 1	B 6
CARBURETOR ASSY 1	B 7
CASE, air cleaner 1	B 6
CASE, chain	C 8
CHAIN	D 2

PARTS NAME INDEX

DESCRIPTION	GRID NO.
CIRCLIP	B 3
*	B 5
*	B12
*	B12
*	B13
*	B13
*	B15
*	B15
*	B15
*	C 2
*	C 2
*	C 3
*	D 4
CLAMP	B 4
*	C 9
CLAMP, hose	B 6
CLIP	B 5
*	B 9
*	B12
*	B13
*	C 7
*	C12
CLIP, oil seal	C10
*	C10
CLUTCH, hub	C15
COIL, source	B 4
COLLAR	B 3
*	C12
*	C14
*	C15
*	D 2
CONNECTOR, cable	D 3
COVER, ball race 2	C 9
COVER, crankcase 1	B11
COVER, crankcase 2	B11
COVER, double seat	C13
COVER, footrest	D 4
COVER, hub dust	C14
COVER, kick lever	B12
COVER, oil Pump	B10
COVER, shift Pedal	C 3
COVER, side 1	C 6
COVER, sPring	B12
CRANK 1	B 3
CRANK 2	B 3
CRANKCASE 1	B10
CRANKCASE 2	B10
CRANKSHAFT ASSY	B 3
CROWN, handle	C 9

PARTS NAME INDEX

DESCRIPTION	GRID NO.
CYLINDER COMP., front fork	C10
*	C10
CYLINDER 1	B 2
DAMPER	C15
DAMPER, engine mount 1	B10
DAMPER, locating 1	C 7
*	C12
DAMPER, locating 3	C12
ELEMENT, air cleaner	B 6
EMBLEM 1	C 6
EMBLEM 2	C 6
EMBLEM, rear arm	C 8
EXHAUST PIPE ASSY 1	B 9
FENDER, front	C 5
FLANGE, sPacer	C15
FLANGE, sPacer 1	C14
FLAP	C 6
FLOAT	B 7
FOOTREST 1	D 4
FOOTREST 2	D 4
FORK, shift 1	C 2
FORK, shift 2	C 2
FRAME COMP.	C 4
FRONT FORK ASSY (L.H.)	C10
FRONT FORK ASSY (R.H.)	C10
FUEL COCK ASSY 1	C12
FUEL TANK COMP.	C12
GASKET	B 5
*	B 7
*	B 9
*	B 9
*	B 9
*	B 9
*	B10
*	C12
GASKET, crankcase cover	B11
GASKET, cylinder	B 2
GASKET, cylinder head 1	B 2
GASKET, exhaust Pipe	B 9
GASKET, float chamber	B 7
GASKET, muffler	B 9
GASKET, valve seat	B 6
*	B 6
GEAR, kick (21T)	B12
GEAR, Pump drive	B 5
GEAR, worm wheel (71T)	B 5
GEAR, 1st wheel (39T/26T)	B15

PARTS NAME INDEX

DESCRIPTION	GRID NO.
GEAR, 2nd wheel (29T)	B15
GEAR, 3rd wheel (22T)	B15
GRAPHIC SET	C12
GRAPHIC SET, front fender	C 5
GRIP (L.H.)	D 3
GRIP ASSY	D 3
GROMMET	B 5
*	B10
*	C 6
*	C12
GUIDE	B 6
GUIDE, sPring	B12
HANDLEBAR	D 3
HEAD, cylinder 1	B 2
HOLDER	B10
HOLDER, cable 1	C11
HOLDER, handle lower	C 9
HOLDER, handle uPPer	C 9
HOLDER, lever 2	D 6
HOLDER, oil Pipe	B 5
HOOK, sPring	C 2
HOSE	B 7
*	B 8
*	C12
HUB, front	C14
HUB, rear	C15
IGNITION COIL ASSY	D 5
INNER TUBE COMP.1	C10
*	C10
JET, main (#120)	B 7
JET, main (#125)	B 7
JET, main (#130)	B 7
JET, Pilot (#15.0)	B 7
JOINT	B 6
JOINT, air cleaner 1	B 6
JOINT, chain	D 2
KEY, woodruff	B 3
KICK AXLE ASSY	B12
KICK CRANK ASSY	B12
LABEL, safety	C 6
LEVER 2	D 6
LEVER, camshaft	C15
LEVER, camshaft 1	C14
MAIN AXLE COMP.	B15
MANIFOLD, intake	B 6
NEEDLE SET	B 7
NEEDLE VALVE SET	B 7
NOZZLE, main	B 7

PARTS NAME INDEX

DESCRIPTION	GRID NO.
NUT	B 2
*	B 3
*	B 5
*	B 7
*	B13
*	B14
*	C 4
*	C 9
*	C 9
*	C13
*	C14
*	C15
*	C15
*	D 2
*	D 2
*	D 3
*	D 4
NUT, castle	C14
*	D 2
NUT, self-locking	C 8
NUT, u	D 6
NUT, wing	D 4
O-RING	B 3
*	B 5
*	B11
*	B13
*	C 2
*	C10
*	C10
*	C12
*	C15
OIL PUMP ASSY	B 5
OIL SEAL	B 3
*	B 3
*	B 5
*	B11
*	B12
*	B15
*	C 3
*	C10
*	C10
*	C14
*	C15
ONE WAY BOSS COMP.	B13
PAWL, kick	B13
PEDAL, brake	D 4
PEDAL, shift	C 3
PIECE, connecting	D 3

PARTS NAME INDEX

DESCRIPTION	GRID NO.
PIN	D 4
PIN, clevis	C 8
*	C 8
*	D 4
PIN, cotter	C 8
*	C14.
*	D 2
*	D 2
*	D 4
*	D 4
PIN, crank 1	B 3
PIN, dowel	B 5
*	B 5
*	B10
*	B11
*	B11
*	C 2
*	C 2
PIN, float	B 7
PIN, piston	B 3
PIPE, delivery	B 5
PIPE, oil	C 7
PISTON (STD)	B 3
PISTON (1ST O/S 0.25MM)	B 3
PISTON (2ND O/S 0.50MM)	B 3
PISTON RING SET (STD)	B 3
PISTON RING SET (1ST O/S)	B 3
PISTON RING SET (2ND O/S)	B 3
PLATE, adjusting	B 5
PLATE, brake shoe	C14
*	C15
PLATE, clutch 1 (1.2T)	B13
PLATE, clutch 1 (1.4T)	B13
PLATE, clutch 1 (1.6T)	B13
PLATE, cover	B15
PLATE, friction	B13
*	B13
PLATE, Pressure 2	B13
PLATE, side	C 2
PLATE, stopper 2	C 2
PLATE, thrust weight	B13
PLATE, thrust 2	B14
PLUG CAP ASSY	D 5
*	D 5
PLUG, oil level	B11
PLUG, spark	B 2
PLUG, spark (NGK BP6HS)	B 2
PLUG, straight screw	B10
PLUNGER, starter	B 7
PRESSURE PLATE ASSY	B13
PRIMARY DRIVE GEAR ASSY	B13

PARTS NAME INDEX

DESCRIPTION	GRID NO.
PRIMARY DRIVE GEAR ASSY	B13
*	B13
PRIMARY DRIVEN GEAR COMP.	B13
*	B13
*	B13
PROTECTOR, silencer	B 9
PROTECTOR	B11
PROTECTOR ASSY	B 9
PROTECTOR, handlebar	D 3
PULLER, chain 2	D 2
RACE, ball 1	C 9
*	C 9
RACE, ball 2	C 9
*	C 9
REAR ARM COMP.	C 8
REED VALVE ASSY	B 6
REED, valve	B 6
RIM (1.40-14)	C14
RIM (1.60-12)	C15
RING, piston	C10
*	C10
RIVET, blind	B 6
ROD, brake	D 4
ROD, connecting	B 3
ROTOR ASSY	B 4
SCREW	B10
*	C12
SCREW, blind	B 5
SCREW, flat head	B 4
SCREW, lever fitting	C12
SCREW, Pan head	B 4
*	B 4
*	B 5
*	B 5
*	B 6
*	B 6
*	B 6
*	B 6
*	B 7
*	B 7
*	B 7
*	B 7
*	B 9
*	B 9
*	B10
*	B10
*	B10
*	B10

PARTS NAME INDEX

DESCRIPTION	GRID NO.
SCREW, Pan head	B11
*	B11
*	B11
*	B11
*	B11
*	B15
*	C 2
*	C 9
*	D 5
*	D 5
SCREW, tapping	D 3
SCREW, with washer	C 5
*	C 6
*	C 8
SEAL, dust	C10
*	C10
SEAL, guard	C 8
SEAT, spring upper	C10
*	C11
SEMI-DOUBLE SEAT ASSY	C13
SHAFT, pivot	C 8
SHIFT CAM ASSY	C 2
SHIFT SHAFT ASSY	C 3
SHIM	B 5
SHOCK ABSORBER ASSY, rear	C 8
SILENCER, exhaust	B 9
SPACER	B14
*	C14
*	C15
SPOKE SET, front	C14
SPOKE SET, rear	C15
SPRING, compression	B13
*	B13
*	D 4
SPRING, front fork	C10
*	C10
SPRING, Pawl	B13
SPRING, Plunger	B 7
SPRING, rebound	C10
*	C10
SPRING, tension	C 2
*	C 3
*	C14
*	C15
*	D 4
SPRING, throttle valve	B 7
SPRING, torsion	B12
*	C 3

PARTS NAME INDEX

DESCRIPTION	GRID NO.
SPRING, torsion	D 4
*	D 4
SPROCKET, drive (15T)	B15
SPROCKET, driven (32T)	C15
STAND, side	D 4
STATOR ASSY	B 4
STAY 1	B 6
STAY, Plate	C 9
STOPPER LEVER ASSY	C 2
STOPPER, reed valve	B 6
STOPPER, screw	C 3
SUPPORT, chain	C 8
SWITCH, handle 1	D 6
TANK, oil	C 7
THROTTLE SCREW SET	B 7
TIRE (2.50-14)	C14
TIRE (3.00-12)	C15
TOOL KIT	C 7
TUBE (2.50-14)	C14
TUBE (2.75-12)	C15
TUBE, outer 1	C10
TUBE, outer 2	C10
UNDER BRACKET COMP.	C11
VALVE, throttle 1	B 7
WASHER	B 3
*	C 9
*	C15
WASHER (0.6T)	B15
WASHER (0.8T)	B15
WASHER (1.0T)	B15
WASHER, conical sPring	B13
*	B14
WASHER, Plate	B 2
*	B 3
*	B 4
*	B 4
*	B 6
*	B 6
*	B 6
*	B 6
*	B 6
*	B 9
*	B 9
*	B12
*	B13
*	C 3
*	C 4
*	C 8
*	C12

PARTS NAME INDEX

DESCRIPTION	GRID NO.
WASHER, Plate	C12
*	D 2
*	D 4
*	D 4
*	D 4
*	D 5
WASHER, Plate (1.0T)	B12
WASHER, Plug screw	B 7
WASHER, sPecial	C10
*	C10
WASHER, sPring	B 3
*	B 4
*	B 4
*	B 9
*	B 9
*	C 4
*	C 9
*	C 9
*	C 9
*	C11
*	C12
*	D 2
*	D 2
*	D 4
*	D 5
*	D 6
*	D 6
WIRE, earth lead	D 6