

YAMAHA

PARTS CATALOGUE

RS125E (4W7)

**MIDDLE NEAR EAST
AFRICA**

104W7-500E1

FOREWORD

This Parts Catalogue is related to the parts in use for the Yamaha RS 125E (4W7).
When you are ordering replacement parts for the RS 125E (4W7), refer to this Parts Catalogue and quote both part numbers and part names correctly.

1. Modifications or additions which have been made after issue of the Parts Catalogue will be announced in the Yamaha Parts News.
It is advisable that according to the Yamaha Parts News you make necessary corrections to the Parts Catalogue on hand to keep it up-to-date.

2. Abbreviations

The following abbreviations are used in this Parts Catalogue.

- U,R. Use size (thickness) and/or number as required.
- U,N. Use as many as you need.
- A,P. Alternate Parts
- L,M. Local Made
- F# Frame No. (Applicable machine No.)

3. The parts marked with (+) in the parts number column of this Catalogue are not supplied with by Yamaha, those have to be found locally.
4. Parts, which are to be supplied in the form of assemblies, are listed with an indentation of one letter's space, and a dot (.) is put against the name of each part.

EXAMPLE CARBURETOR ASS'Y
. JET, pilot
. NOZZLE, main

5. Indication of No. of constituent parts for assembly

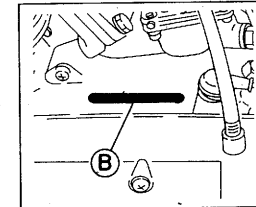
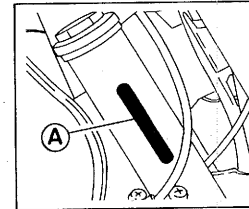
The numeral appearing to the right of each constituent part under the description indicates the quantity of such parts for each individual assembly unit.

EXAMPLE

Part No.	Description	Q'ty	Remarks
2F5-83310-60	FRONT FLASHER LIGHT ASS'Y	2	
115-83311-60	. BULB (6V-18W)	1	
1M1-83309-60	. REFLECTOR	1	

6. Initial Serial No. and Color Code

(A) Frame Serial No.	4W7-000101 and following
(B) Engine Serial No.	4W7-000101 and following



Color Code	Color Name	Abbreviate
L3	Competition Light Green	CLG
33	Yamaha Black	YB
63	Brilliant Red	BR
75	Marine Blue	MRB

7. Applicable colors of graphics are represented in the "Remarks" column by the letter(s) appropriately picked out of the full word(s) showing such colors.

EXAMPLE

Part No.	Description	Q'ty	Remarks
2N4-24110-00-X5	FUEL TANK COMP.	1	MAXIM RED
3J1-24240-10	. GRAPHIC, fuel tank set	1	for MXR

CONTENTS

ENGINE

Fig. 1	Cylinder	1
Fig. 2	Crankshaft · Piston	2
Fig. 3	D.C Generator	4
Fig. 4	Oil Pump	6
Fig. 5	Intake	7
Fig. 6	Carburetor	8
Fig. 7	Exhaust	10
Fig. 8	Crankcase	11
Fig. 9	Crankcase Cover	12
Fig. 10	Kick Starter	13
Fig. 11	Clutch	14
Fig. 12	Transmission	16
Fig. 13	Shift Cam · Fork	18
Fig. 14	Shift Shaft · Pedal	19

CHASSIS

Fig. 15	Frame · Tool	20
Fig. 16	Front Fender · Rear Fender	21
Fig. 17	Side Cover · Oil Tank	22
Fig. 18	Rear Arm · Suspension	23
Fig. 19	Steering	24
Fig. 20	Front Fork	25
Fig. 21	Fuel Tank	26
Fig. 22	Seat · Carrier	27
Fig. 23	Front Wheel	28
Fig. 24	Rear Wheel	30
Fig. 25	Handlebar · Cable	32
Fig. 26	Stand · Footrest	33
Fig. 27	Leg Shield	34
Fig. 28	Flasher Light	35
Fig. 29	Speedometer	36
Fig. 30	Headlight	37

Fig. 31	Taillight	38
Fig. 32	Electrical 1	39
Fig. 33	Handle Switch · Lever	40

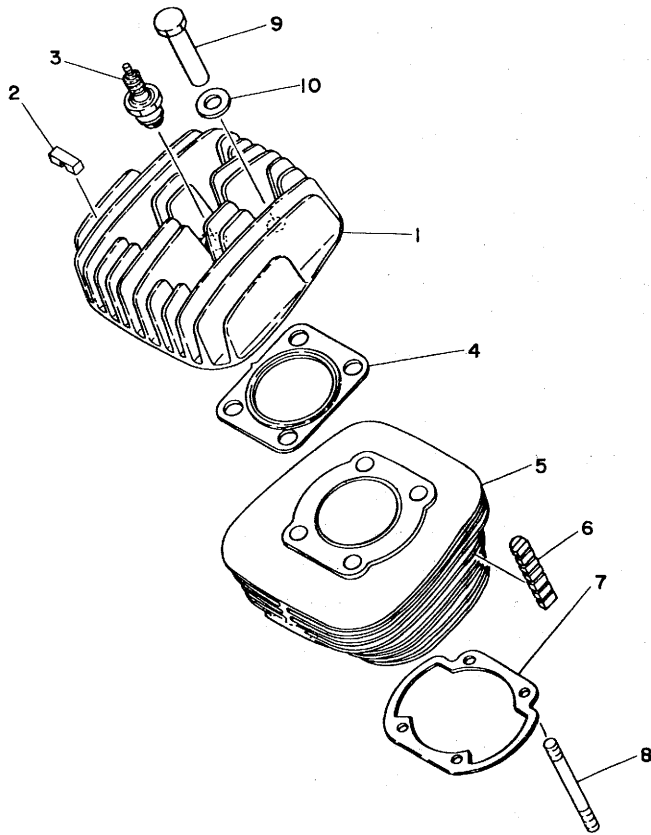
REPAIR KIT

Fig. 34	Repair Kit	41
---------	------------	----

INDEX

Numerical Index
Parts Name Index

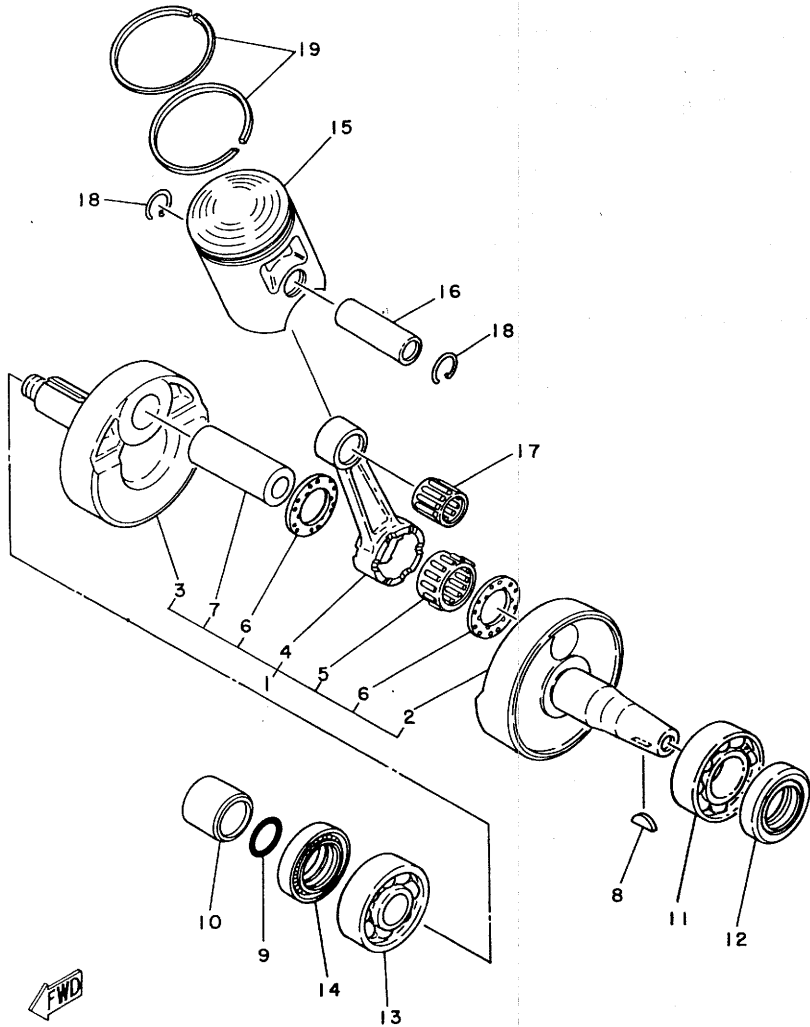
FIG. 1 CYLINDER



REF. NO.	PART NO.	DESCRIPTION	Q'TY	REMARKS
1	479-11111-00	HEAD, cylinder 1	1	
2	463-11127-02	ABSORBER 3	16	
3	94701-00040	PLUG, sPark (NGK B7HS)	1	
4	1E2-11181-00	GASKET, cylinder head 1	1	
5	479-11311-01	CYLINDER 1	1	
6	463-11161-01	ABSORBER 1	16	
7	248-11351-00	GASKET, cylinder	1	
8	90116-08067	BOLT, stud	4	
9	90179-08025	NUT	4	
10	90201-12362	WASHER, Plate	4	



FIG. 2 CRANKSHAFT-PISTON



REF. NO.	PART NO.	DESCRIPTION	Q'TY	REMARKS
1	1E2-11400-04	CRANKSHAFT ASSY	1	
2	1E2-11412-02	•CRANK 1	1	
3	452-11422-00	•CRANK 2	1	
4	1V0-11651-00	•ROD, connecting	1	
5	93310-42231	•BEARING, cylindrical	1	
6	90209-22071	•WASHER	2	
7	3M5-11681-00	•PIN, crank 1	1	
8	90280-03017	KEY, woodruff	1	
9	93210-18023	O-RING	1	
10	90387-20170	COLLAR	1	
11	93306-20517	BEARING (B6205)	1	
12	93102-25061	OIL SEAL	1	
13	93306-30405	BEARING (B6304C3)	1	
14	93103-28011	OIL SEAL	1	
15	479-11631-03-97	PISTON (STD)	1	UR
	479-11631-03-98	PISTON (STD)	1	UR
	479-11635-03	PISTON (1ST O/S 0.25MM)	1	AP
	479-11636-03	PISTON (2ND O/S 0.50MM)	1	AP
	479-11637-03	PISTON (3RD O/S 0.75MM)	1	AP
	479-11638-03	PISTON (4TH O/S 1.00MM)	1	AP
16	137-11633-00	PIN, Piston	1	
17	93310-216A3	BEARING, cylindrical	1	
18	93450-17025	CIRCLIP	2	
19	479-11601-00	PISTON RING SET (STD)	1	
	479-11601-10	PISTON RING SET (1ST O/S)	1	AP
	479-11601-20	PISTON RING SET (2ND O/S)	1	AP
	479-11601-30	PISTON RING SET (3RD O/S)	1	AP

FIG. 2 CRANKSHAFT-PISTON

REF. NO.	PART NO.	DESCRIPTION	Q'TY	REMARKS
19	479-11601-40	PISTON RING SET (4TH O/S)	1	AP

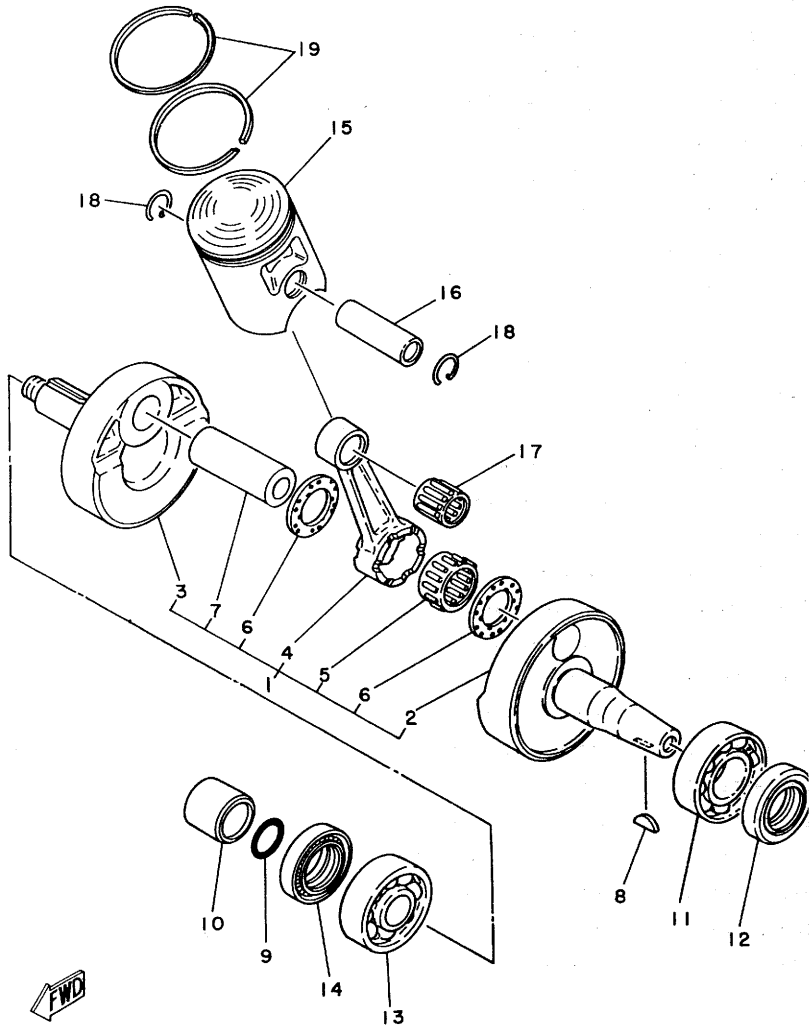
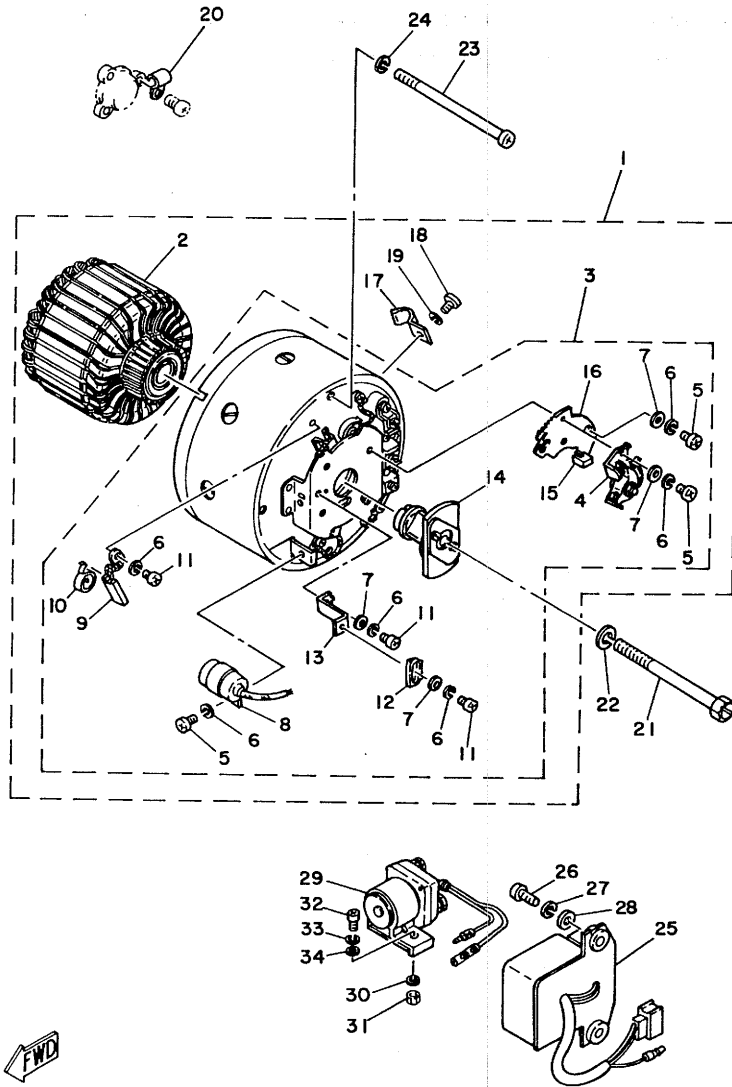
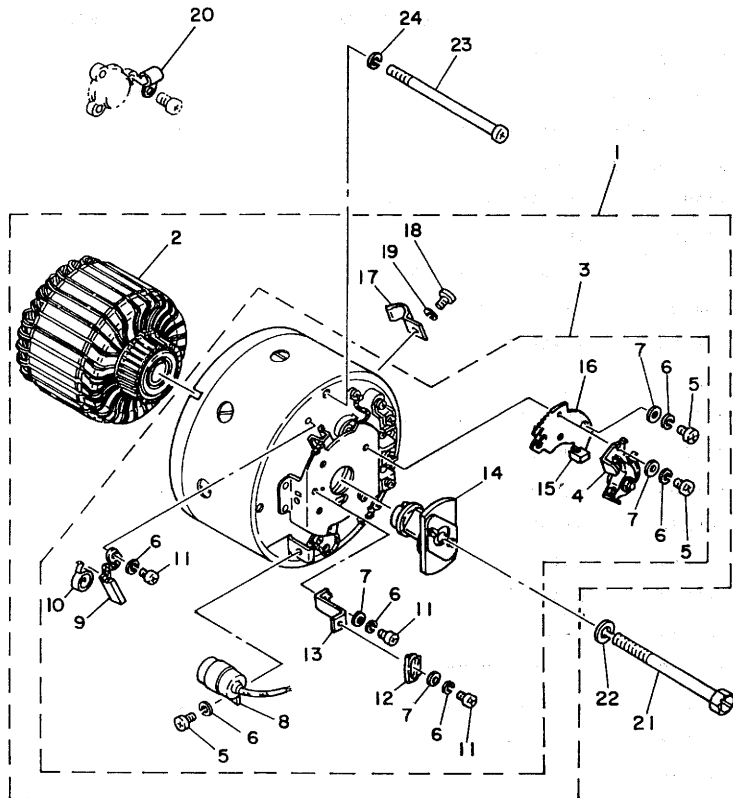


FIG. 3 D.C GENERATOR

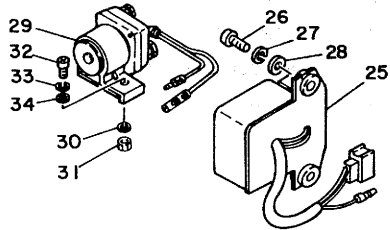


REF. NO.	PART NO.	DESCRIPTION	Q'TY	REMARKS
1	1R0-81100-10	STARTER GENERATOR ASSY	1	
2	372-81155-11	•ARMATURE	1	
3	1R0-81110-10	•STATOR ASSY	1	
4	183-81421-10	••CONTACT BREAKER ASSY	1	
5	98501-04008	••SCREW, Pan head	8	
6	92901-04100	••WASHER, sPring	8	
7	92901-04200	••WASHER, Plain	5	
8	148-81126-10	••CONDENSER 2	1	
9	101-81111-10	••BRUSH	4	
10	141-81113-10	••SPRING, brush	4	
11	98501-04006	••SCREW, Pan head	7	
12	133-81132-10	••PLATE, timing	1	
13	299-81133-10	••FIXTURE, timing Plate	1	
14	299-81153-11	••GOVERNOR ASSY	1	
15	207-81331-10	••LUBRICATOR	1	
16	1R0-81428-10	••PLATE, breaker	1	
17	1E2-81128-00	•CLAMP	1	
18	98501-04006	•SCREW, Pan head	1	
19	92901-04100	•WASHER, sPring	1	
20	90462-05012	CLAMP	1	
21	90143-07021	SCREW, hexagon	1	
22	92902-08100	WASHER, sPring	1	
23	90149-06103	SCREW	2	
24	92902-06100	WASHER, sPring	2	
25	444-81910-10	VOLTAGE REGULATOR ASSY	1	
26	92501-06015	SCREW, Pan head	2	
27	92902-06100	WASHER, sPring	2	
28	92902-06600	WASHER	2	

FIG. 3 D.C GENERATOR

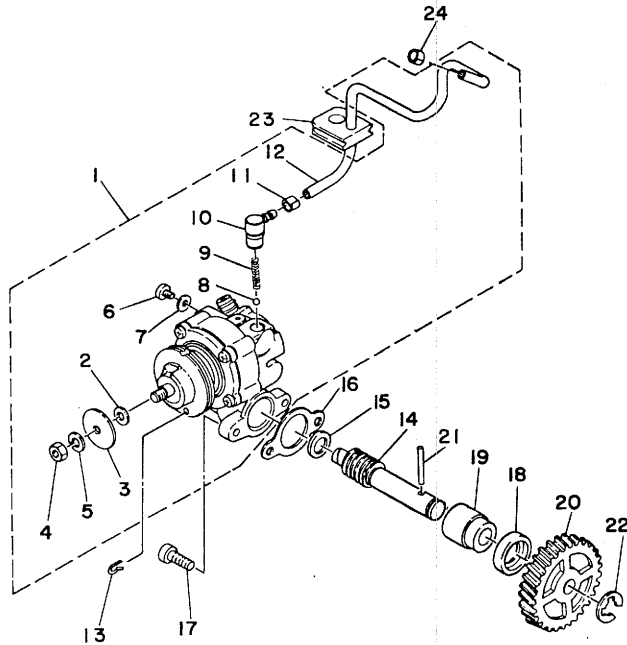


REF. NO.	PART NO.	DESCRIPTION	Q'TY	REMARKS
29	444-81940-11	STARTER SWITCH ASSY	1	
30	92902-06100	WASHER, sPring	2	
31	95302-06700	NUT	2	
32	92501-06015	SCREW, Pan head	1	
33	92902-06100	WASHER, sPring	1	
34	92902-06600	WASHER	1	



FWD

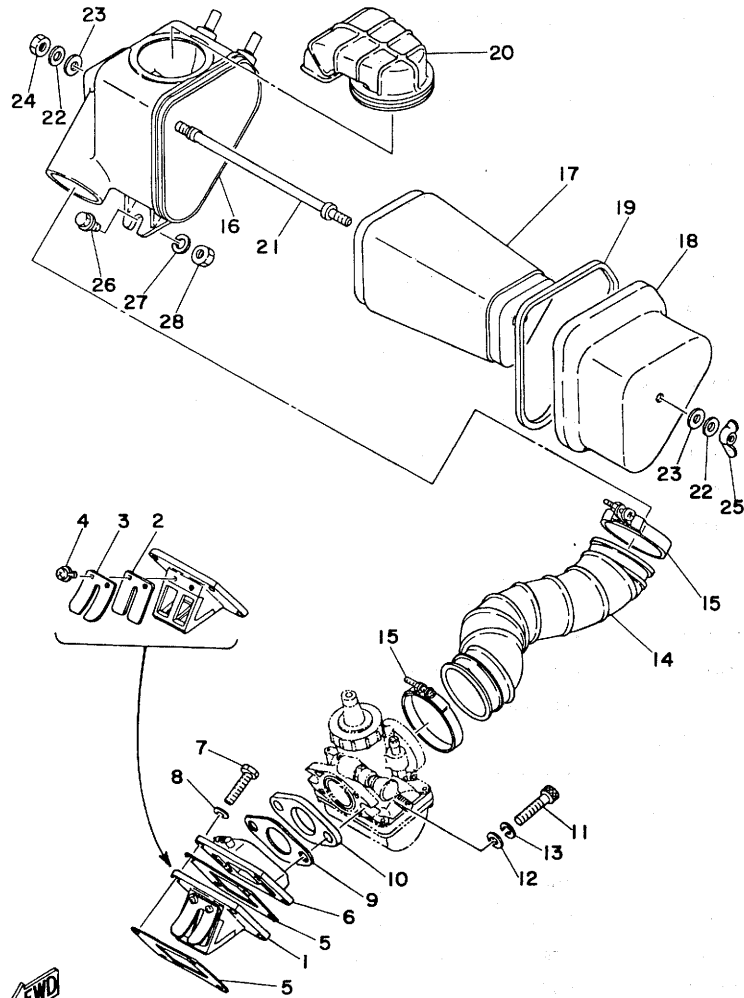
FIG. 4 OIL PUMP



REF. NO.	PART NO.	DESCRIPTION	Q'TY	REMARKS
1	479-13101-01	OIL PUMP ASSY	1	
2	137-13137-00-03	•SHIM (0.3T)	1	UR
	137-13137-00-05	•SHIM (0.5T)	1	UR
	137-13137-00-10	•SHIM (1.0T)	1	UR
3	137-13138-01	•PLATE, adjusting	1	
4	95301-05600	•NUT	1	
5	92901-05100	•WASHER, spring	1	
6	98901-04008	•SCREW, blind	1	
7	90430-04004	•GASKET	1	
8	93505-32002	•BALL	1	
9	278-13169-00	•SPRING, check ball	1	
10	353-13552-01	•NOZZLE	1	
11	90468-02033	•CLIP	1	
12	90445-05266	•HOSE	1	
13	363-13133-01	CLIP	1	
14	214-13175-02	SHAFT, worm	1	
15	90201-08624	WASHER, Plate	1	
16	126-13116-00	GASKET, Pump case	1	
17	98501-05016	SCREW, Pan head	2	
18	93101-10002	OIL SEAL	1	
19	137-13176-00	METAL, worm shaft outer	1	
20	248-13178-00	GEAR, drive (28T)	1	
21	93603-22028	PIN, dowel	1	
22	93430-08006	CIRCLIP	1	
23	248-13174-00	HOLDER, oil Pipe	1	
24	90468-02033	CLIP	1	

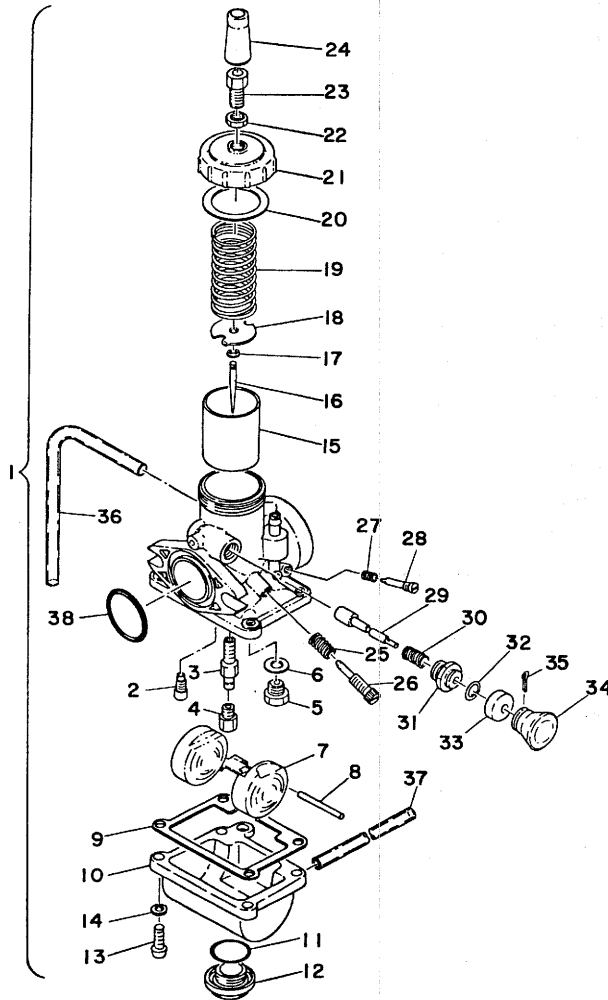


FIG. 5 INTAKE



REF. NO.	PART NO.	DESCRIPTION	Q'TY	REMARKS
1	345-13610-10	REED VALVE ASSY	1	
2	1A0-13613-00	•REED, valve	2	
3	345-13616-70	•STOPPER, reed valve	2	
4	97602-03108	•SCREW, Pan head with washer	4	
5	314-13621-02	GASKET, valve seat	2	
6	463-13565-00	JOINT, carburetor	1	
7	97301-06025	BOLT	4	
8	92901-06100	WASHER, sPring	4	
9	248-13556-70	GASKET, manifold	1	
10	315-13555-00	MANIFOLD, intake	1	
11	91316-08030	BOLT	2	
12	90201-08544	WASHER, Plate	2	
13	92901-08100	WASHER, sPring	2	
14	1E2-14453-00	JOINT, air cleaner 1	1	
15	90460-49058	CLAMP, hose	2	
16	1E2-14411-00	CASE, air cleaner 1	1	
17	1E2-14450-00	ELEMENT ASSY, air cleaner	1	
18	1E2-14412-00	CAP, cleaner case 1	1	
19	1E2-14416-00	GASKET, air cleaner	1	
20	1E2-14437-00	DUCT	1	
21	1E2-14429-01	SCREW	1	
22	92901-06200	WASHER, Plain	2	
23	90202-05057	WASHER, Plate	2	
24	95301-06700	NUT	1	
25	90175-06012	NUT, wing	1	
26	95801-06012	BOLT, flange	1	
27	92901-06100	WASHER, sPring	1	
28	95301-06700	NUT	1	

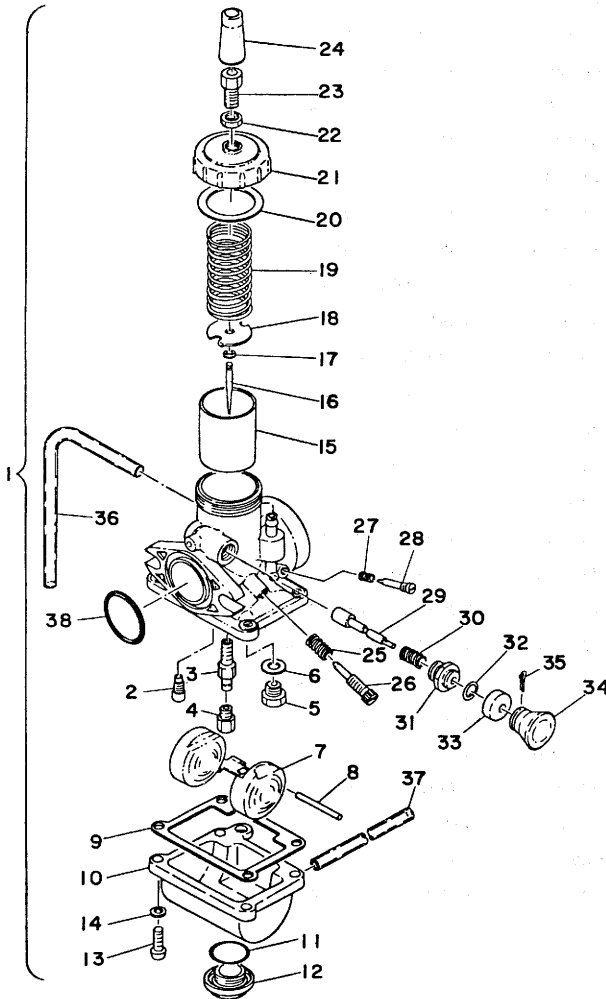
FIG. 6 CARBURETOR



REF. NO.	PART NO.	DESCRIPTION	Q'TY	REMARKS
1	1E2-14101-80	CARBURETOR ASSY 1	1	
	1E2-14101-50	CARBURETOR ASSY 1	1	for Hight Land
2	260-14142-30	•JET, Pilot (#30.0)	1	
3	558-14141-16	•NOZZLE, main	1	
4	137-14143-34	•JET, main (#170)	1	UR STD
	137-14143-30	•JET, main (#150)	1	UR
	137-14143-32	•JET, main (#160)	1	UR for Hight Land
	137-14143-36	•JET, main (#180)	1	UR
	137-14143-38	•JET, main (#190)	1	UR
5	168-14190-25	•NEEDLE VALVE ASSY	1	
6	214-14195-00	•WASHER, needle valve	1	
7	314-14185-00	•FLOAT	1	
8	127-14186-00	•PIN, float	1	
9	304-14184-00	•GASKET, float chamber	1	
10	539-14181-08	•BODY, float chamber 1	1	
11	558-14147-00	•O-RING	1	
12	500-14115-00	•PLUG, screw	1	
13	98502-04014	•SCREW, Pan head	4	
14	92901-04100	•WASHER, sPring	4	
15	479-14112-25	•VALVE, throttle 1	1	
16	360-14116-01	•NEEDLE	1	
17	127-14137-00	•CLIP	1	
18	246-14132-00	•STOPPER, cable	1	
19	248-14131-00	•SPRING, throttle valve	1	
20	246-14126-00	•GASKET	1	
21	802-14158-00	•TOP, mixing chamber	1	
22	802-14161-00	•NUT, cable adjusting	1	
23	127-14124-20	•SCREW, cable adjusting	1	
24	802-14169-00	•CAP	1	

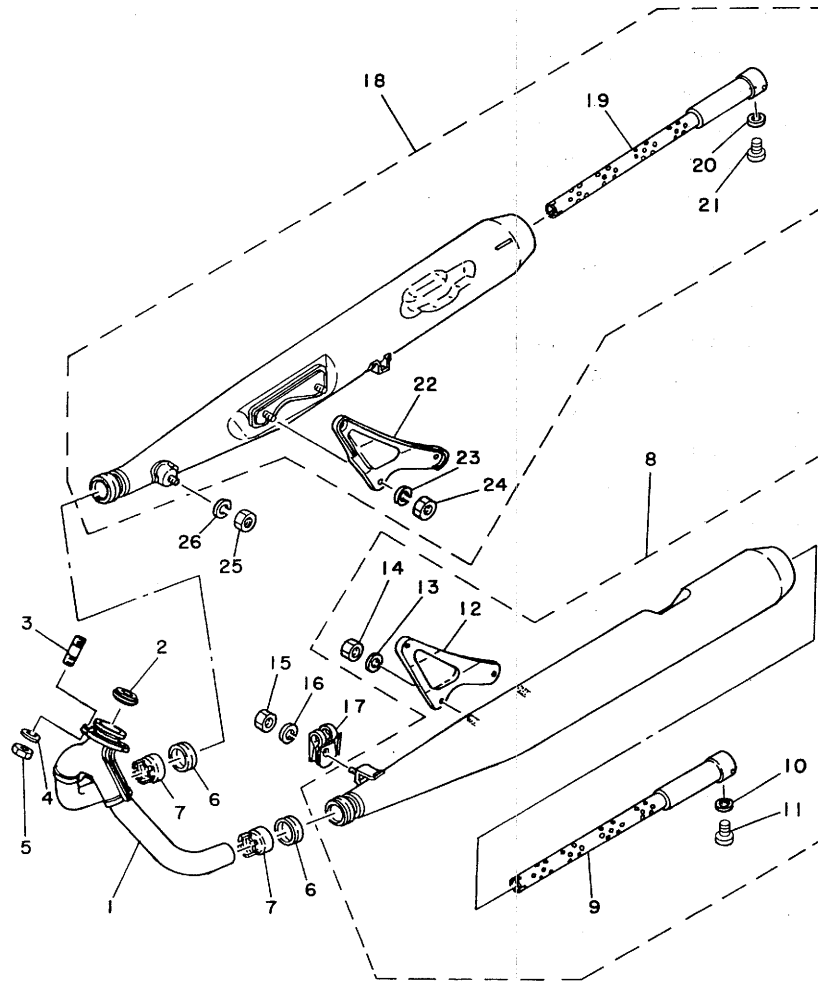
FWD

FIG. 6 CARBURETOR



REF. NO.	PART NO.	DESCRIPTION	Q'TY	REMARKS
25	137-14133-00	.SPRING, throttle stop	1	
26	2A0-14122-00	.SCREW, throttle	1	
27	174-14134-00	.SPRING, air adjusting	1	
28	174-14123-00	.SCREW, air adjusting	1	
29	304-14171-00	.PLUNGER, starter	1	
30	156-14135-00	.SPRING, Plunger	1	
31	152-14174-00	.CAP, Plunger	1	
32	353-14138-00	.CLIP, Plunger	1	
33	132-14173-00	.COVER, Plunger cap	1	
34	304-14261-00	.HOLDER	1	
35	91401-16015	.PIN, cotter	1	
36	183-14197-01	.PIPE	1	
37	183-14196-00	.PIPE	1	
38	248-14147-00	.O-RING	1	

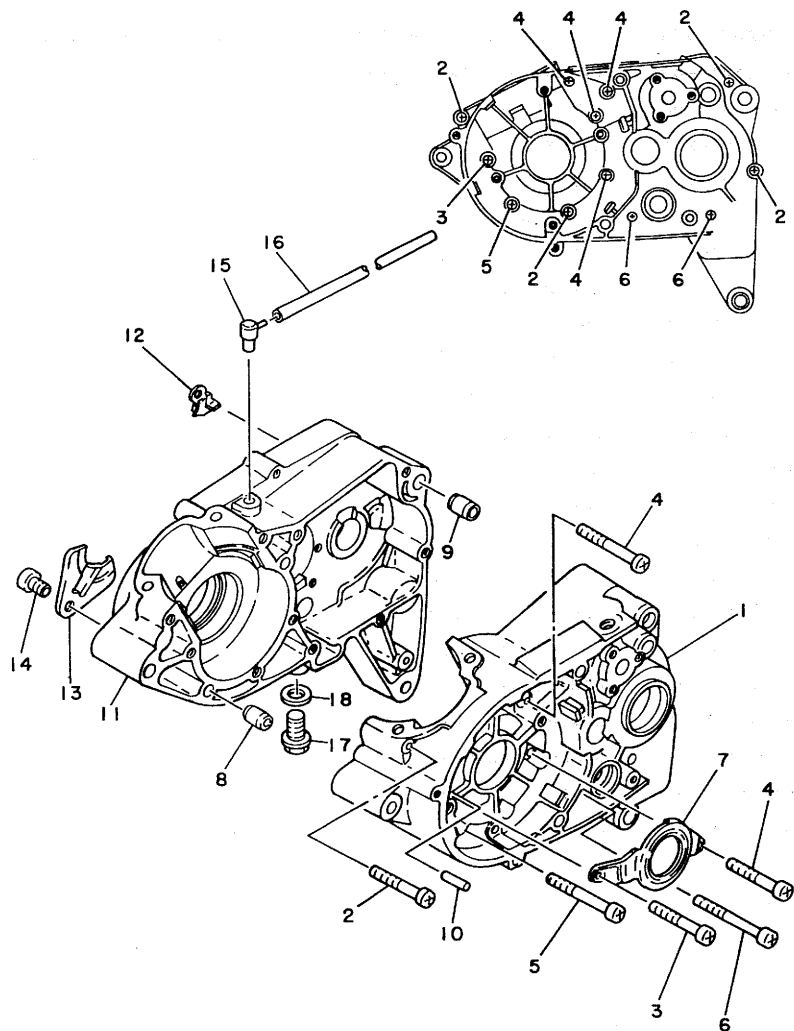
FIG. 7 EXHAUST



REF. NO.	PART NO.	DESCRIPTION	Q'TY	REMARKS
1	1E2-14611-50	PIPE, exhaust 1	1	
2	152-14613-00	GASKET, exhaust Pipe	1	
3	90116-08166	BOLT, stud	2	
4	92901-08100	WASHER, sPring	2	
5	90179-08004	NUT	2	
6	132-14714-01	GASKET, muffler	2	
7	132-14713-00	NUT, muffler joint	2	
8	1E2-14710-50	MUFFLER ASSY 1	1	
9	463-14753-00	•SILENCER, exhaust	1	
10	92901-05100	•WASHER, sPring	1	
11	98501-05010	•SCREW, Pan head	1	
12	1E2-14771-50	•STAY, muffler 1	1	
13	92901-08100	•WASHER, sPring	2	
14	95301-08600	•NUT	2	
15	95301-08600	NUT	1	
16	92901-08100	WASHER, sPring	1	
17	1E2-14772-00	STAY, muffler 2	1	
18	1E2-14720-50	MUFFLER ASSY 2	1	
19	463-14753-00	•SILENCER, exhaust	1	
20	92901-05100	•WASHER, sPring	1	
21	98501-05010	•SCREW, Pan head	1	
22	1E2-14781-50	•STAY, muffler 2	1	
23	92901-08100	•WASHER, sPring	2	
24	95301-08600	•NUT	2	
25	95301-08600	NUT	1	
26	92901-08100	WASHER, sPring	1	

FWD

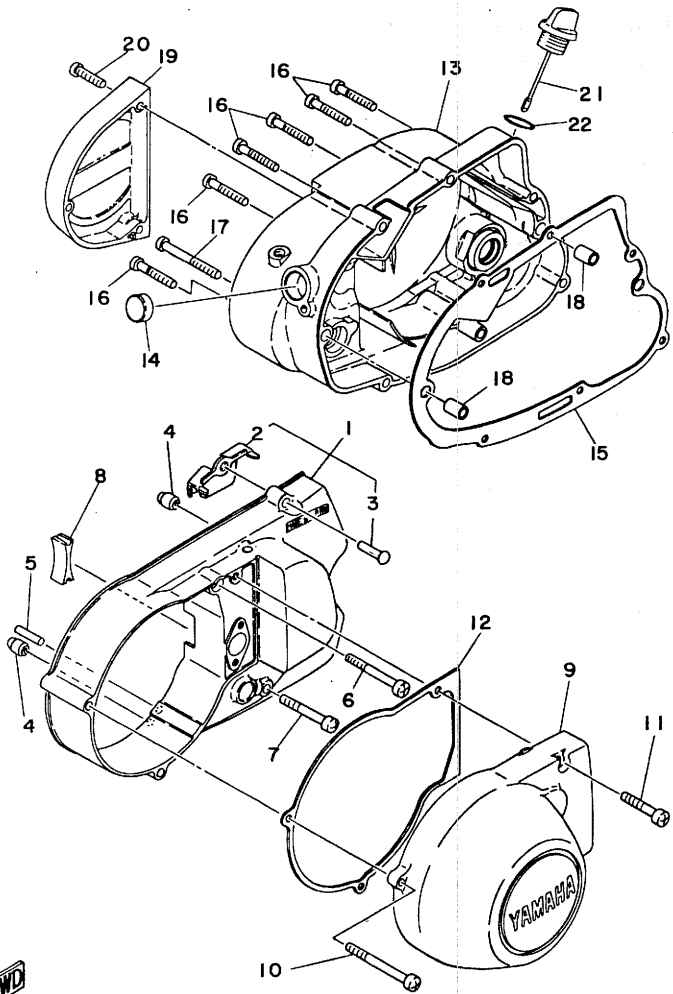
FIG. 8 CRANKCASE



REF. NO.	PART NO.	DESCRIPTION	Q'TY	REMARKS
1	248-15111-03	CRANKCASE 1	1	
2	92501-06045	SCREW, Pan head	4	
3	92501-06050	SCREW, Pan head	1	
4	92501-06055	SCREW, Pan head	4	
5	92501-06060	SCREW, Pan head	1	
6	92501-06065	SCREW, Pan head	2	
7	444-15118-00	HOLDER	1	
8	91830-21014	PIN, dowel	1	
9	91830-24016	PIN, dowel	1	
10	93603-22028	PIN, dowel	1	
11	444-15121-02	CRANKCASE 2	1	
12	463-15492-00	COVER	1	
13	304-15128-00	HOLDER	1	
14	92501-08010	SCREW, Pan head	1	
15	498-15371-00	BREATHER	1	
16	90446-07009	HOSE	1	
17	90340-12005	PLUG, straight screw	1	
18	90430-12038	GASKET	1	



FIG. 9 CRANKCASE COVER



REF. NO.	PART NO.	DESCRIPTION	Q'TY	REMARKS
1	1E2-15410-00	CRANKCASE COVER ASSY 1	1	
2	336-15418-00	COVER, chain case	1	
3	90260-06024	RIVET, round head	1	
4	91830-21014	PIN, dowel	1	
5	93606-25021	PIN, dowel	1	
6	92501-06050	SCREW, Pan head	1	
7	92501-06055	SCREW, Pan head	1	
8	248-15357-00	GROMMET	1	
9	1E2-15415-00	COVER, generator	1	
10	92501-06065	SCREW, Pan head	2	
11	92501-06030	SCREW, Pan head	1	
12	1E2-15455-00	GASKET 1	1	
13	479-15421-00-Y4	COVER, crankcase 2	1	metallic silver
14	90338-20023	PLUG	1	
15	315-15451-02	GASKET, crankcase cover	1	
16	92501-06035	SCREW, Pan head	6	
17	92501-06055	SCREW, Pan head	1	
18	91830-21014	PIN, dowel	2	
19	463-15416-00	COVER, oil Pump	1	
20	92501-06020	SCREW, Pan head	3	
21	401-15362-00	PLUG, oil level	1	
22	93210-19123	O-RING	1	

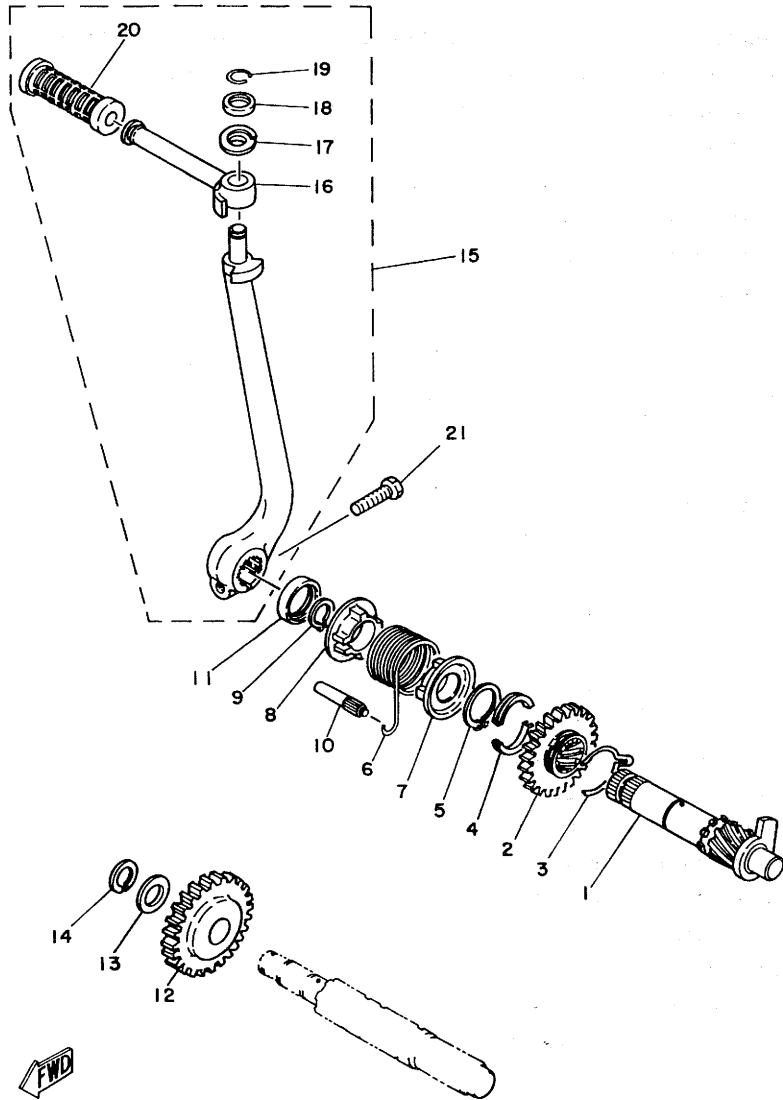
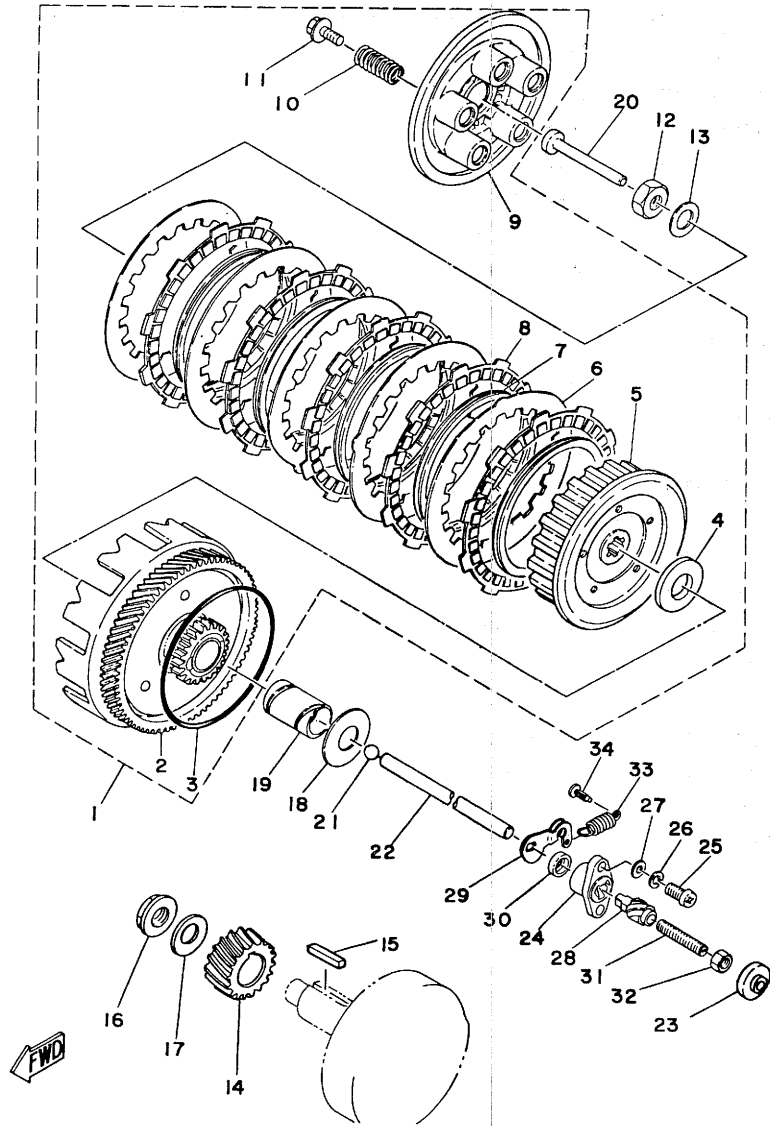


FIG. 10 KICK STARTER

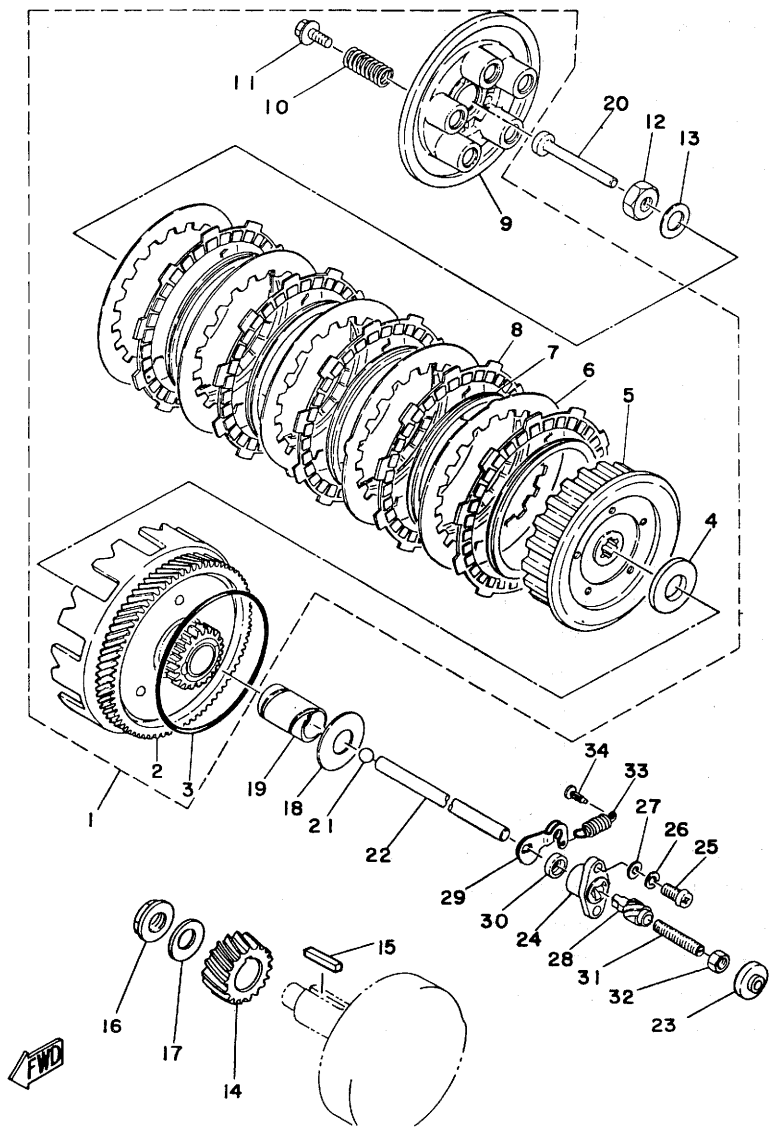
REF. NO.	PART NO.	DESCRIPTION	Q'TY	REMARKS
1	315-15660-01	KICK AXLE ASSY	1	
2	315-15641-00	GEAR, kick (27T)	1	
3	90468-26048	CLIP	1	
4	248-15654-00	HOLDER, kick gear	2	
5	93410-30012	CIRCLIP	1	
6	90508-26040	SPRING, torsion	1	
7	214-15664-00	GUIDE, sPring	1	
8	214-15676-00	COVER, sPring	1	
9	93410-20009	CIRCLIP	1	
10	257-15668-00	STOPPER	1	
11	93104-20017	OIL SEAL	1	
12	401-15651-00	GEAR, kick idle (25T)	1	
13	132-15653-00-10	WASHER	1	UR
	132-15653-00-12	WASHER	1	UR
	132-15653-00-14	WASHER	1	UR
14	93410-13004	CIRCLIP	1	
15	1E2-15620-01	KICK CRANK ASSY	1	
16	122-15612-02	•LEVER, kick	1	
17	90504-18005	•SPRING, comPrission	1	
18	90209-10108	•WASHER	1	
19	93440-10028	•CIRCLIP	1	
20	156-15618-01	•COVER, kick lever	1	
21	97321-08030	BOLT	1	

FIG. 11 CLUTCH



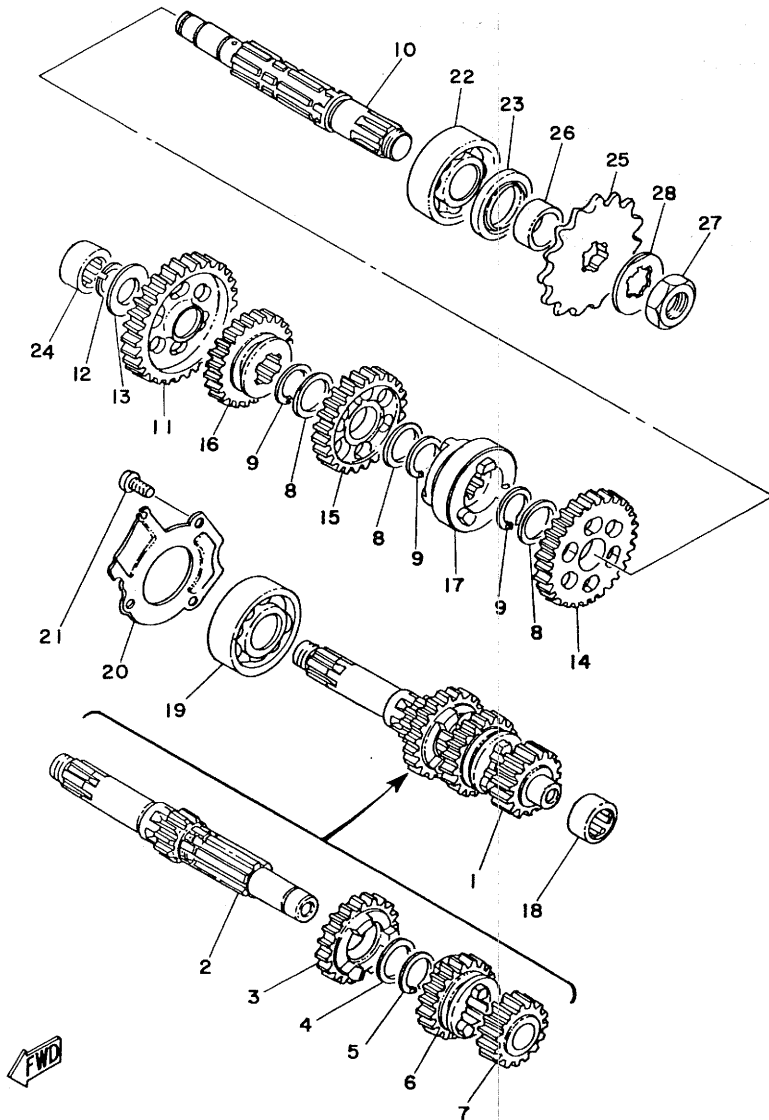
REF. NO.	PART NO.	DESCRIPTION	Q'TY	REMARKS
1	515-16301-01	CLUTCH ASSY	1	
2	515-16150-01	•PRIMARY DRIVEN GEAR COMP.	1	
3	132-16369-00	•RING, friction	1	
4	276-16154-00	•PLATE, thrust 1	1	
5	1E7-16371-00	•BOSS, clutch	1	
6	336-16324-00	•PLATE, clutch 1	5	
7	307-16367-00	•RING, cushion	5	
8	307-16321-00	•PLATE, friction	5	
9	132-16351-00	•PLATE, Pressure 1	1	
10	90501-20125	•SPRING, compression	5	
11	90119-05001	•BOLT, with washer	5	
12	90170-12060	NUT	1	
13	90208-12015	WASHER, conical spring	1	
14	401-16111-00-30	GEAR, Primary drive	1	
15	90282-05005	KEY, straight	1	
16	90179-12244	NUT	1	
17	90208-12015	WASHER, conical spring	1	
18	90201-17558	WASHER, Plate	1	
19	90560-17124	SPACER	1	
20	137-16356-00	ROD, Push 1	1	
21	93501-04011	BALL	1	
22	137-16357-00	ROD, Push 2	1	
23	132-15389-00	SEAL, Push rod	1	
24	314-16396-01	HOUSING, Push screw	1	
25	92501-06015	SCREW, Pan head	2	
26	92901-06100	WASHER, spring	2	
27	92901-06600	WASHER, Plate	2	
28	241-16341-01	SCREW, Push	1	

FIG. 11 CLUTCH



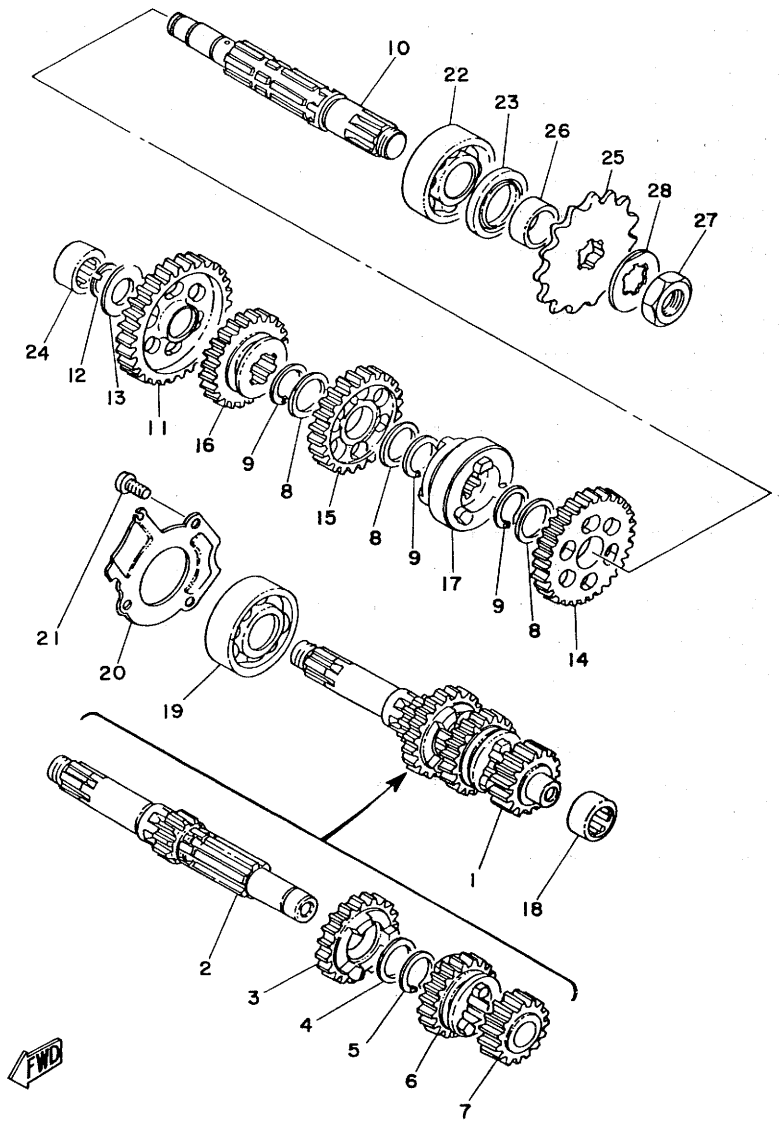
REF. NO.	PART NO.	DESCRIPTION	Q'TY	REMARKS
29	241-16342-00	LEVER, Push	1	
30	93104-11028	OIL SEAL	1	
31	90113-06013	BOLT, set	1	
32	95301-06700	NUT	1	
33	90506-10019	SPRING, tension	1	
34	132-16346-00	HOOK, sPring	1	

FIG. 12 TRANSMISSION



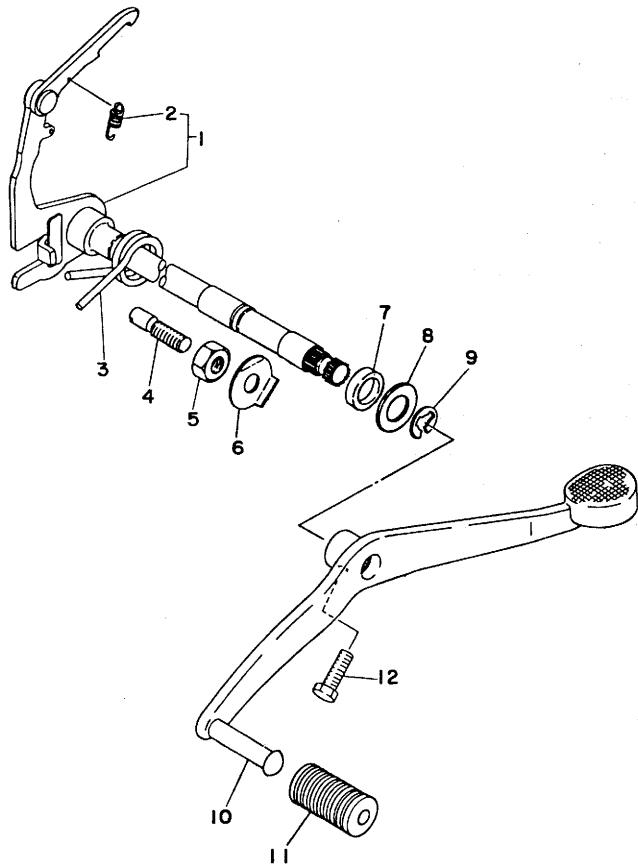
REF. NO.	PART NO.	DESCRIPTION	Q'TY	REMARKS
1	479-17410-00	MAIN AXLE COMP.	1	
2	479-17411-01	•AXLE, main	1	
3	437-17141-00	•GEAR, 4th Pinion (23T)	1	
4	90201-20266	•WASHER, Plate	1	
5	93410-20038	•CIRCLIP	1	
6	427-17131-00	•GEAR, 3rd Pinion (19T)	1	
7	437-17121-01	•GEAR, 2nd Pinion (15T)	1	
8	90201-20266	WASHER, Plate	3	
9	93410-20038	CIRCLIP	3	
10	315-17421-01	AXLE, drive	1	
11	248-17211-00	GEAR, 1st wheel (35T)	1	
12	93440-15012	CIRCLIP	1	
13	164-17427-00-04	SHIM 1 (0.4T)	1	UR
	164-17427-00-06	SHIM 1 (0.6T)	1	UR
	164-17427-00-08	SHIM 1 (0.8T)	1	UR
	164-17427-00-10	SHIM 1 (1.0T)	1	UR
	164-17427-00-12	SHIM 1 (1.2T)	1	UR
14	427-17221-00	GEAR, 2nd wheel (30T)	1	
15	427-17231-00	GEAR, 3rd wheel (26T)	1	
16	248-17241-00	GEAR, 4th wheel (23T)	1	
17	463-17285-00	CLUTCH, dog	1	
18	93315-31502	BEARING, cylindrical	1	
19	93306-30414	BEARING (B6304)	1	
20	401-17471-00	PLATE, cover	1	
21	98501-05012	SCREW, Pan head	3	
22	93306-30401	BEARING (B6304)	1	
23	93102-26042	OIL SEAL	1	
24	93311-31515	BEARING, cylindrical	1	

FIG. 12 TRANSMISSION



REF. NO.	PART NO.	DESCRIPTION	Q'TY	REMARKS
25	174-17461-50	SPROCKET, drive (15T)	1	UR STD
	174-17461-40	SPROCKET, drive (14T)	1	UR
	174-17461-60	SPROCKET, drive (16T)	1	UR
26	90387-20491	COLLAR	1	
27	90179-16018	NUT	1	
28	90215-16020	WASHER, lock.	1	

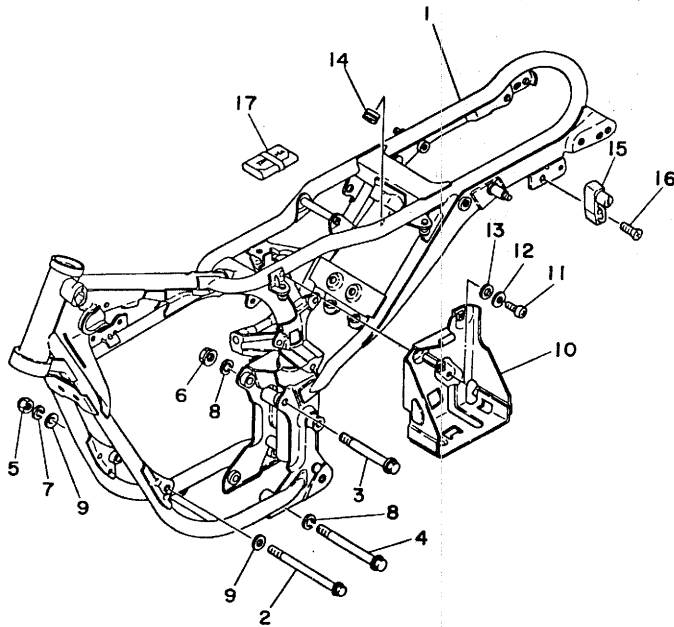
FIG. 14 SHIFT SHAFT-PEDAL



REF. NO.	PART NO.	DESCRIPTION	Q'TY	REMARKS
1	248-18101-01	SHIFT SHAFT ASSY	1	
2	90506-09009	•SPRING, tension	1	
3	90508-32207	SPRING, torsion	1	
4	90149-08094	SCREW	1	
5	90170-08029	NUT	1	
6	90215-08014	WASHER, lock	1	
7	93109-14005	OIL SEAL	1	
8	90201-14586	WASHER, Plate	1	
9	93430-12009	CIRCLIP	1	
10	1E2-18111-01-91	PEDAL, shift	1	
11	132-18113-01	COVER, shift Pedal	1	
12	97311-06020	BOLT	1	

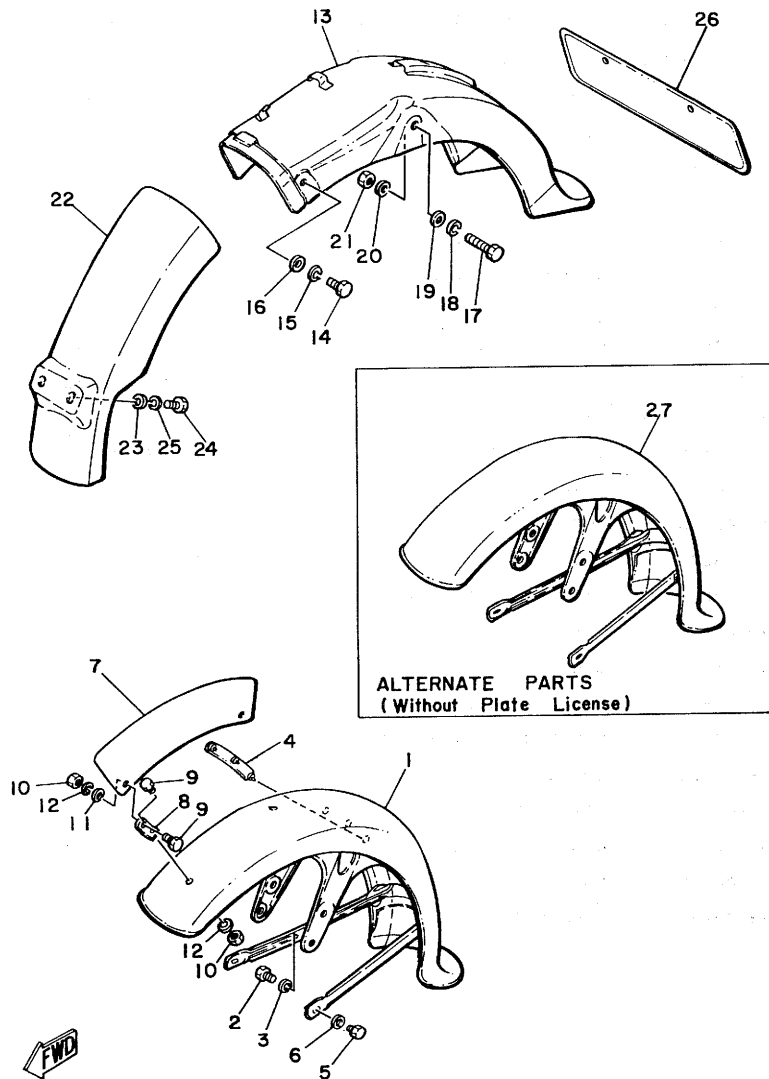


FIG. 15 FRAME. TOOL



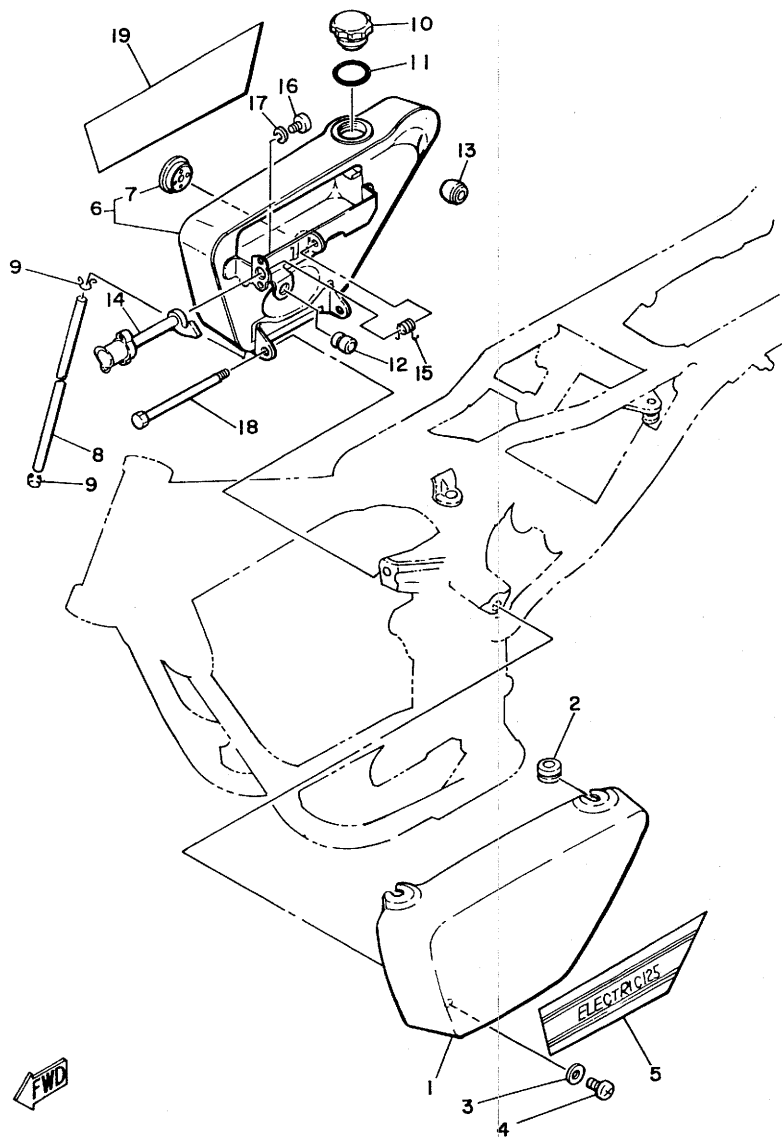
REF. NO.	PART NO.	DESCRIPTION	Q'TY	REMARKS
1	1R0-21110-10-33	FRAME COMP	1	yamaha black
2	90105-08029	BOLT, washer based	1	
3	90105-10039	BOLT, washer based	1	
4	90105-10040	BOLT, washer based	1	
5	90185-08054	NUT, self-locking	1	
6	95701-10100	NUT, flange	1	
7	92901-08100	WASHER, spring	1	
8	92901-10100	WASHER, spring	2	
9	90209-08050	WASHER	2	
10	1E2-21170-00-33	BOX COMP.	1	yamaha black
11	92501-06015	SCREW, Pan head	3	
12	92901-06100	WASHER, spring	3	
13	92901-06600	WASHER, Plate	3	
14	90480-10091	GROMMET	2	
15	1R0-21308-00	HELMET HANGER ASSY	1	
16	92701-06030	SCREW, flat head	1	
17	1E7-28100-10	TOOL KIT	1	

FIG. 16 FRONT FENDER•REAR FENDER



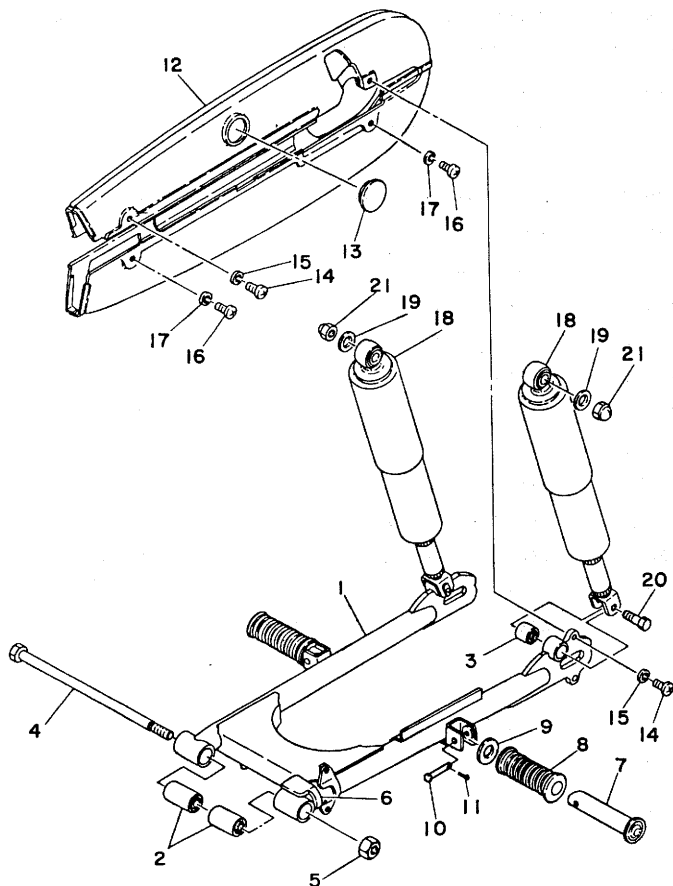
REF. NO.	PART NO.	DESCRIPTION	Q'TY	REMARKS
1	1E2-21510-70-93	FRONT FENDER COMP.	1	chrome-Plated
2	97301-08012	BOLT	4	
3	92901-08100	WASHER, sPring	4	
4	137-21517-00	PAD, cable	1	
5	97301-06012	BOLT	2	
6	92901-06600	WASHER, Plate	2	
7	479-21582-80-33	PLATE, license	1	yamaha black
8	1E2-21581-00	STAY, Plate fitting 1	2	
9	97303-06012	BOLT	4	
10	95303-06600	NUT	4	
11	92903-06600	WASHER, Plate	2	
12	92901-06100	WASHER, sPring	4	
13	1E2-21610-00-93	REAR FENDER COMP.	1	chrome-Plated
14	97321-06012	BOLT	2	
15	92901-06100	WASHER, sPring	2	
16	92901-06600	WASHER, Plate	2	
17	97301-08040	BOLT	2	
18	92901-08100	WASHER, sPring	2	
19	92901-08600	WASHER, Plate	2	
20	92901-08200	WASHER, Plain	2	
21	95301-08600	NUT	2	
22	1E2-21629-00	GUARD, mud	1	
23	90201-06067	WASHER, Plate	2	
24	97301-06016	BOLT	2	
25	92901-06100	WASHER, sPring	2	
26	202-21681-00	PLATE, license	1	
ALTERNATE PARTS (Without Plate License)				
27	372-21510-00-93	FRONT FENDER COMP.	1	chrome-Plated

FIG. 17 SIDE COVER OIL TANK



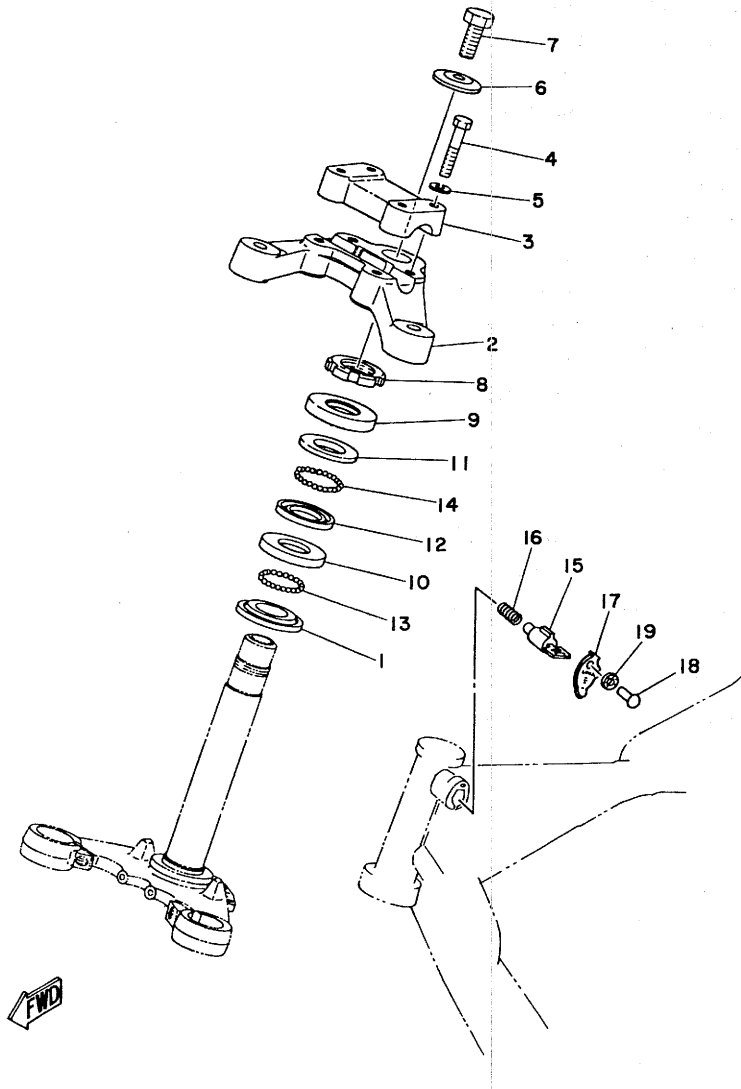
REF. NO.	PART NO.	DESCRIPTION	Q'TY	REMARKS
1	1E2-21711-00-L3	COVER, side (L.H)	1	UR comPetition light Green
	1E2-21711-00-33	COVER, side (L.H)	1	UR yamaha black
	1E2-21711-00-63	COVER, side (L.H)	1	UR brilliant red
	1E2-21711-00-75	COVER, side (L.H)	1	UR marine blue
2	90480-12053	GROMMET	2	
3	90201-06067	WASHER, Plate	1	
4	97801-06018	SCREW, Pan head	1	
5	1E2-21781-01	EMBLEM 1	1	
6	1E2-21705-00-L3	OIL TANK ASSY	1	UR comPetition light Green
	1E2-21705-00-33	OIL TANK ASSY	1	UR yamaha black
	1E2-21705-00-63	OIL TANK ASSY	1	UR brilliant red
	1E2-21705-00-75	OIL TANK ASSY	1	UR marine blue
7	214-21761-00	GAUGE, level	1	
8	90445-09106	HOSE	1	
9	90467-08003	CLIP	2	
10	183-21770-11	OIL TANK CAP ASSY	1	
11	90430-29114	GASKET	1	
12	90480-14182	GROMMET	1	
13	1E2-21778-00	DAMPER, locating	1	
14	1E2-21780-00	OIL TANK LOCK ASSY	1	
15	90508-12295	SPRING, torsion	1	
16	92501-06010	SCREW, Pan head	2	
17	92901-06100	WASHER, spring	2	
18	90109-06026	BOLT	1	
19	1E2-21782-01	EMBLEM 2	1	

FIG. 18 REAR ARM SUSPENSION



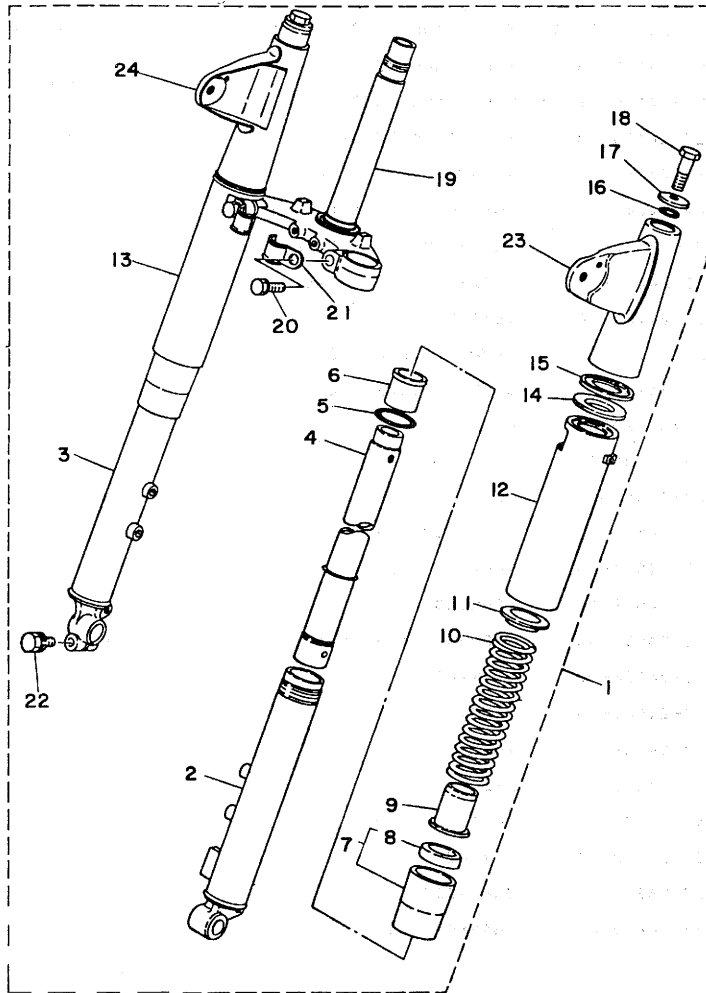
REF. NO.	PART NO.	DESCRIPTION	Q'TY	REMARKS
1	1E2-22110-01-33	REAR ARM COMP.	1	yamaha black
2	307-22123-00	BUSH 1	2	
3	164-22216-00	BUSH, rear shock absorber	2	
4	1E2-22141-00	SHAFT, Pivot	1	
5	90170-12065	NUT	1	
6	173-22151-00	SEAL, Guard	1	
7	120-27431-00	FOOTREST, rear 1	2	
8	120-27433-00	COVER, rear footrest	2	
9	90201-20279	WASHER, Plate	2	
10	90240-06052	PIN, clevis	2	
11	91401-16012	PIN, cotter	2	
12	1E2-22310-00-35	CHAIN CASE ASSY	1	silver
13	148-22315-00	CAP	1	
14	92501-06012	SCREW, Pan head	2	
15	92901-06100	WASHER, sPring	2	
16	92501-06015	SCREW, Pan head	2	
17	92901-06100	WASHER, sPring	2	
18	1N8-22210-41-93	SHOCK ABSORBER ASSY, rear	2	chrome-Plated
19	90201-10141	WASHER, Plate	2	
20	90106-08027	BOLT	2	
21	90176-10013	NUT, crown	2	

FIG. 19 STEERING



REF. NO.	PART NO.	DESCRIPTION	Q'TY	REMARKS
1	156-23411-00	RACE, ball 1	1	
2	1E2-23435-00-98	CROWN, handle	1	low gloss black
3	164-23441-00-98	HOLDER, handle upper	1	low gloss black
4	97321-08035	BOLT	4	
5	92901-08100	WASHER, spring	4	
6	90209-10020	WASHER	1	
7	90105-10006	BOLT, washer based	1	
8	90179-25033	NUT	1	
9	122-23416-00	COVER, ball race 2	1	
10	156-23412-00	RACE, ball 2	1	
11	122-23411-00	RACE, ball 1	1	
12	122-23412-00	RACE, ball 2	1	
13	93501-04011	BALL	19	
14	93503-16010	BALL	22	
15	1E2-23480-00	STEERING LOCK ASSY	1	
16	90502-09024	SPRING, conical	1	
17	584-23484-01	CAP, handle lock	1	
18	90269-04003	RIVET	1	
19	90208-04029	WASHER, conical spring	1	

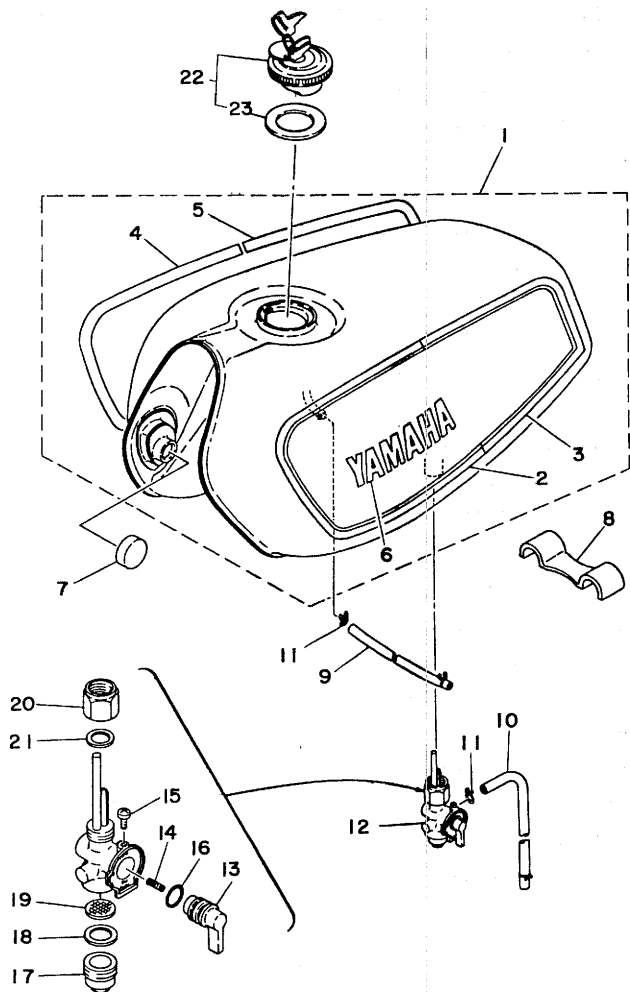
FIG. 20 FRONT FORK



REF. NO.	PART NO.	DESCRIPTION	Q'TY	REMARKS
1	1E2-23100-11-93	FRONT FORK ASSY	1	chrome-Plated
2	1E2-23126-00-35	•TUBE, outer 1	1	silver
3	1E2-23136-00-35	•TUBE, outer 2	1	silver
4	1E2-23124-00	•TUBE, inner 1	2	
5	137-23147-00	•O-RING	2	
6	137-23125-01	•METAL, slide 1	2	
7	1E2-23150-00	•OUTER NUT COMP.	2	
8	137-23145-01	••OIL SEAL	2	
9	137-23143-00	•SEAT, sPring lower	2	
10	137-23141-10	•SPRING, front fork	2	
11	1E2-23142-00	•SEAT, sPring uPPer	2	
12	1R0-23122-00-93	•COVER, outer 1	1	chrome-Plated
13	1R0-23132-00-93	•COVER, outer 2	1	chrome-Plated
14	193-23163-00	•GASKET	2	
15	174-23116-00	•GUIDE, cover lower	2	
16	337-23114-60	•GASKET	2	
17	241-23112-40	•WASHER, caP	2	
18	337-23111-60	•BOLT, caP	2	
19	1E2-23340-00-33	•UNDER BRACKET COMP.	1	yamaha black
20	122-23346-01	•BOLT 1	2	
21	260-23318-40	•HOLDER, cable 1	2	
22	90119-08011	•BOLT, with washer	1	
23	1E2-23121-01-93	•COVER, uPPer 1	1	chrome-Plated
24	1E2-23131-01-93	•COVER, uPPer 2	1	chrome-Plated



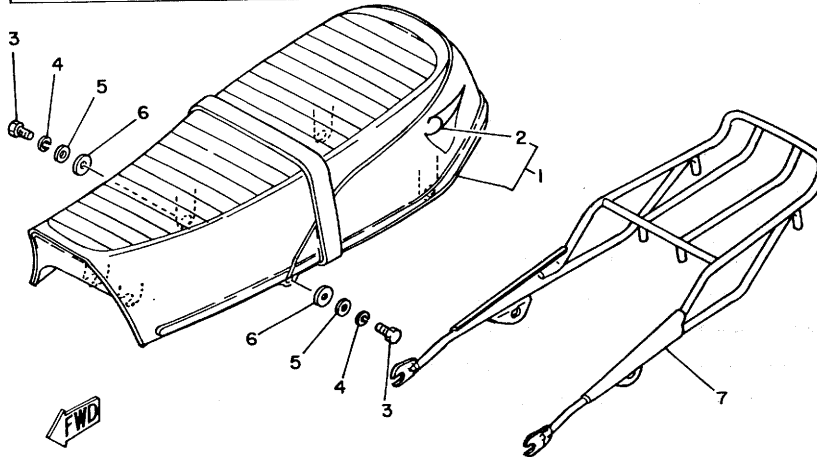
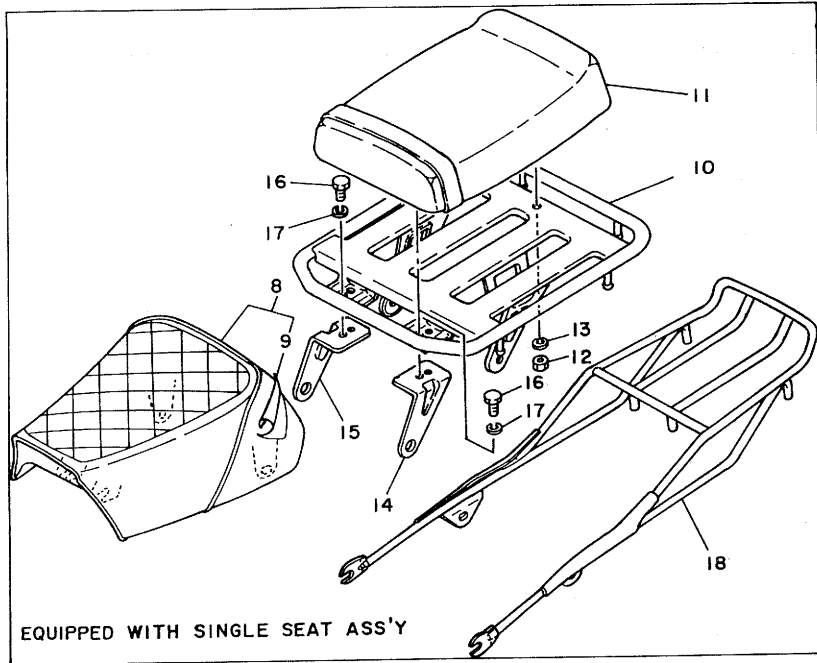
FIG. 21 FUEL TANK



REF. NO.	PART NO.	DESCRIPTION	Q'TY	REMARKS
1	1E2-24110-03-01	FUEL TANK COMP.	1	UR marine blue
	1E2-24110-03-02	FUEL TANK COMP.	1	UR competition light green
	1E2-24110-03-03	FUEL TANK COMP.	1	UR yamaha black
	1E2-24110-03-04	FUEL TANK COMP.	1	UR brilliant red
2	1E2-24244-01	•GRAPHIC, fuel tank 1	1	
3	1E2-24245-01	•GRAPHIC, fuel tank 2	1	
4	1E2-24246-01	•GRAPHIC, fuel tank 3	1	
5	1E2-24247-01	•GRAPHIC, fuel tank 4	1	
6	322-24161-00	•EMBLEM 1	2	
7	122-24181-00	DAMPER, locating 1	2	
8	307-24182-00	DAMPER, locating 2	1	
9	90445-09086	HOSE	1	
10	90445-09089	HOSE	1	
11	90467-08003	CLIP	4	
12	304-24500-10	FUEL COCK ASSY 1	1	
13	357-24524-10	•LEVER, cock	1	
14	357-24529-10	•SPRING	1	
15	2N3-24535-00	•SCREW, lever fitting	1	
16	2N3-24528-00	•O-RING	1	
17	357-24521-10	•CUP, filter	1	
18	357-24522-10	•GASKET	1	
19	357-24515-10	•NET, filter 2	1	
20	2N3-24531-00	•NUT	1	
21	357-24532-10	•GASKET	1	
22	127-24650-02	CAP ASSY	1	
23	122-24612-01	•GASKET, cap	1	

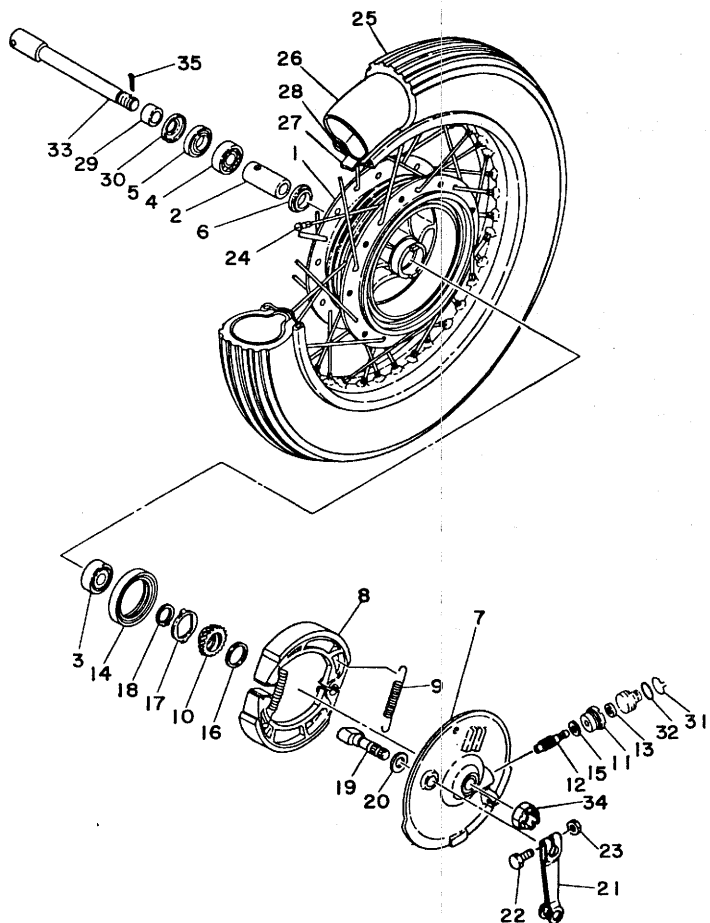


FIG. 22 SEAT CARRIER



REF. NO.	PART NO.	DESCRIPTION	Q'TY	REMARKS
1	1E2-24730-00	DOUBLE SEAT ASSY	1	
2	1E2-24731-00	.COVER, double seat	1	
3	97301-08016	BOLT	2	
4	92901-08100	WASHER, sPring	2	
5	92901-08600	WASHER, Plate	2	
6	90201-14577	WASHER, Plate	2	
7	1E2-24830-00	SUB CARRIER ASSY	1	
		EQUIPPED WITH SINGLE SEAT ASS'Y		
8	1E2-24710-00	SINGLE SEAT ASSY	1	
9	1E2-24711-00	.COVER, single seat	1	
10	1E2-24810-01-93	CARRIER ASSY	1	chrome-Plated
11	372-24750-00	TANDEM SEAT ASSY	1	
12	95301-06600	NUT	1	
13	92901-06100	WASHER, sPring	1	
14	1E2-24821-00	STAY, front carrier 1	1	
15	1E2-24822-00	STAY, front carrier 2	1	
16	97321-08016	BOLT	2	
17	92901-08100	WASHER, sPring	2	
18	1E2-24830-10	SUB CARRIER ASSY	1	

FIG. 23 FRONT WHEEL



REF. NO.	PART NO.	DESCRIPTION	Q'TY	REMARKS
1	227-25111-00-38	HUB, front	1	
2	214-25117-00	SPACER, bearing	1	
3	93306-20203	BEARING (B6202RS)	1	
4	93306-20205	BEARING (B6202)	1	
5	93102-20009	OIL SEAL	1	
6	183-25315-00	FLANGE, spacer	1	
7	1E2-25121-00-38	PLATE, brake shoe	1	clear buffing
8	136-25130-00	BRAKE SHOE COMP.	2	
9	90506-18103	SPRING, tension	2	
10	372-25135-00	GEAR, drive	1	
11	109-25136-00	BUSH	1	
12	372-25138-00	GEAR, meter	1	
13	93104-07003	OIL SEAL	1	
14	93105-50010	OIL SEAL	1	
15	90201-07076	WASHER, Plate	1	
16	90201-22283	WASHER, Plate	1	
17	214-25149-01	CLUTCH, meter	1	
18	93410-22014	CIRCLIP	1	
19	1E2-25151-00	CAMSHAFT	1	
20	148-25353-00	SHIM, camshaft	1	
21	1E2-25155-00	LEVER, camshaft 1	1	
22	90101-06278	BOLT	1	
23	95301-06600	NUT	1	
24	136-25104-00	SPOKE SET, front	1	
25	94130-16207	TIRE (3.00-16)	1	
26	94230-16063	TUBE (3.00-16)	1	
27	94330-16009	BAND, rim (3.00-16)	1	
28	94416-16008	RIM (1.60-16)	1	



FIG. 23 FRONT WHEEL

REF. NO.	PART NO.	DESCRIPTION	Q'TY	REMARKS
29	90387-15111	COLLAR	1	
30	214-25118-00	COVER, hub dust	1	
31	102-25137-00	RING, stop	1	
32	93210-14104	O-RING	1	
33	372-25181-00	AXLE, wheel	1	
34	90171-14020	NUT, castle	1	
35	91401-30030	PIN, cotter	1	

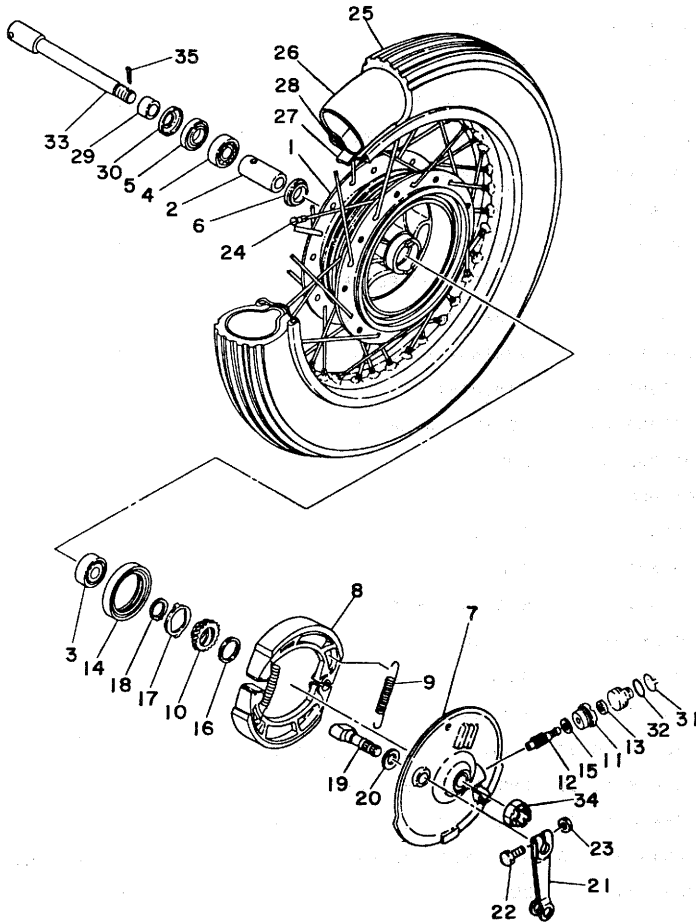
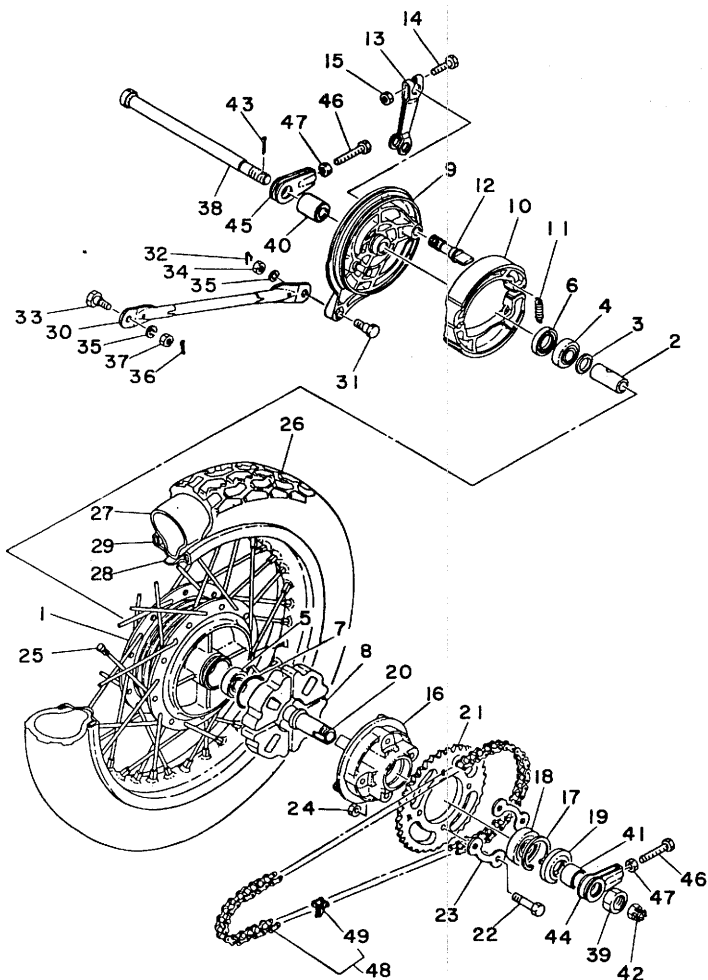


FIG. 24 REAR WHEEL



REF. NO.	PART NO.	DESCRIPTION	Q'TY	REMARKS
1	391-25311-00-38	HUB, rear	1	clear buffing
2	90560-15136	SPACER	1	
3	183-25315-00	FLANGE, sPacer	1	
4	93306-20205	BEARING (B6202)	1	
5	93306-20204	BEARING (B6202Z)	1	
6	93104-22018	OIL SEAL	1	
7	93210-42101	O-RING	1	
8	304-25364-01	DAMPER	4	
9	437-25320-10	BRAKE SHOE PLATE ASSY	1	
10	183-25330-01	BRAKE SHOE COMP.	2	
11	90506-16036	SPRING, tension	2	
12	248-25351-00	CAMSHAFT	1	
13	1R0-25355-00	LEVER, camshaft	1	
14	90101-06278	BOLT	1	
15	95301-06600	NUT	1	
16	183-25366-01	CLUTCH, hub	1	
17	93420-42007	CIRCLIP	1	
18	93306-00406	BEARING (B6004Z)	1	
19	93106-26005	OIL SEAL	1	
20	183-25387-00	AXLE, sProcket	1	
21	183-25437-10-33	SPROCKET, driven (37T)	1	UR STD
	183-25434-10-33	SPROCKET, driven (34T)	1	yamaha black AP yamaha black
	183-25435-10-33	SPROCKET, driven (35T)	1	AP yamaha black
	183-25436-10-33	SPROCKET, driven (36T)	1	AP yamaha black
	183-25438-10-33	SPROCKET, driven (38T)	1	AP yamaha black
22	90109-08361	BOLT	4	
23	482-25412-00	WASHER	2	
24	90179-08168	NUT	4	

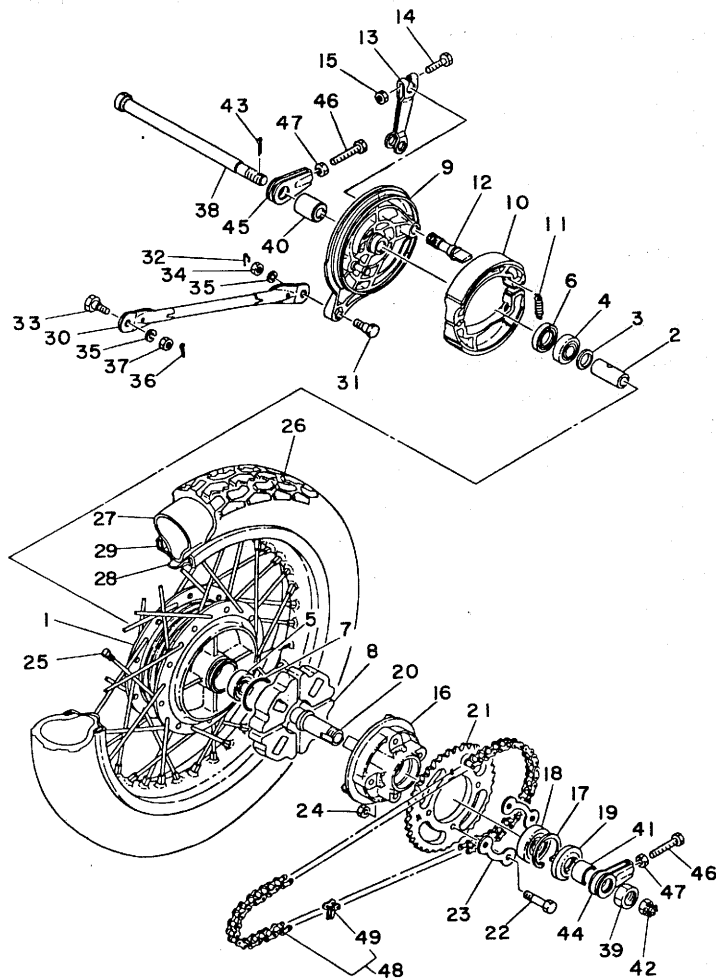
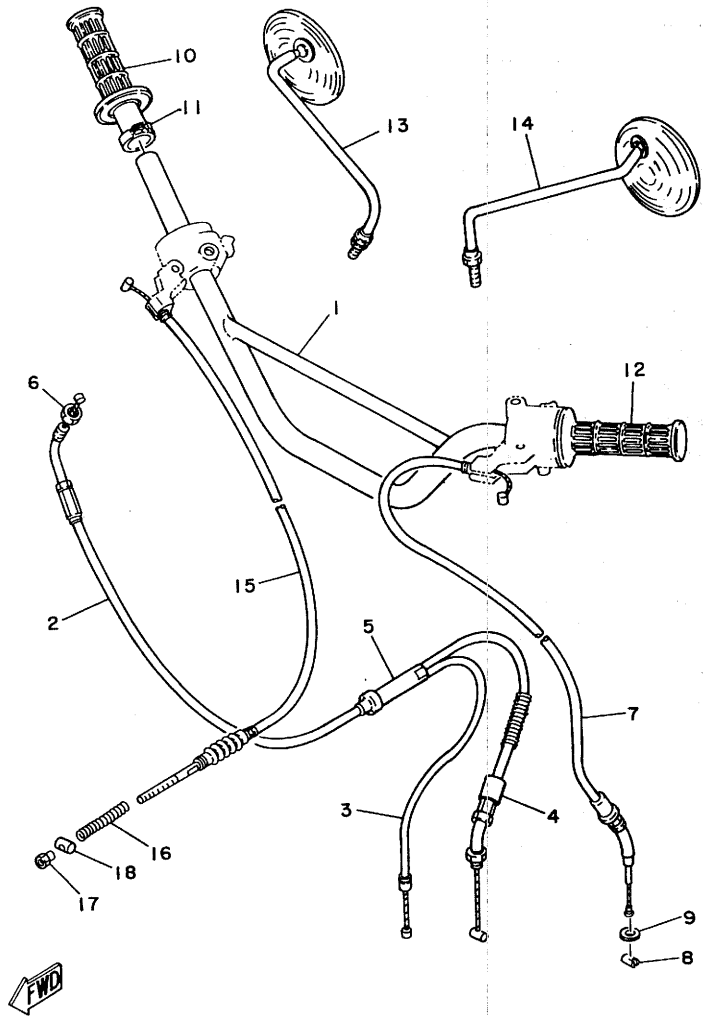


FIG. 24 REAR WHEEL

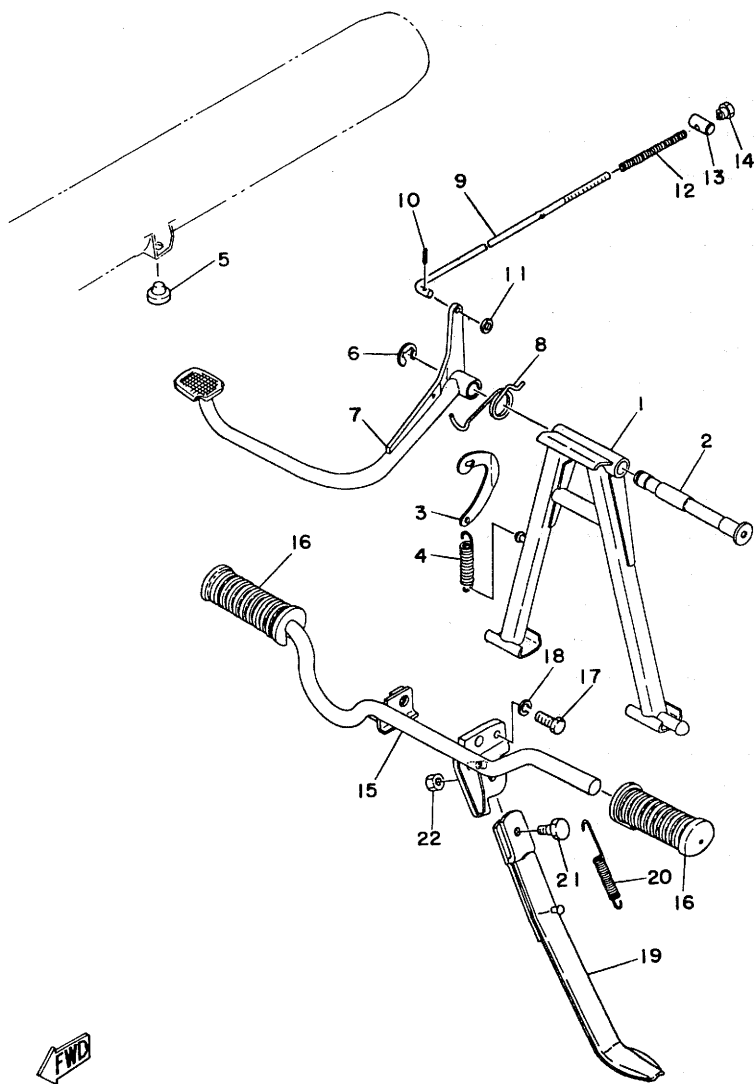
REF. NO.	PART NO.	DESCRIPTION	Q'TY	REMARKS
25	1E2-25304-90	SPOKE SET, rear	1	
26	94130-16208	TIRE (3.00-16)	1	
27	94230-16063	TUBE (3.00-16)	1	
28	94330-16009	BAND, rim (3.00-16)	1	
29	94416-16008	RIM (1.60-16)	1	
30	1E2-25371-10	BAR, tension	1	
31	90109-08063	BOLT	1	
32	90468-12007	CLIP	1	
33	90109-08368	BOLT	1	
34	95301-08700	NUT	1	
35	92901-08100	WASHER, spring	2	
36	91401-20012	PIN, cotter	1	
37	95301-08600	NUT	1	
38	382-25381-00	AXLE, wheel	1	
39	90170-20224	NUT	1	
40	90387-15425	COLLAR	1	
41	90387-20165	COLLAR	1	
42	90171-14020	NUT, castle	1	
43	91401-30030	PIN, cotter	1	
44	214-25388-00	PULLER, chain 1	1	
45	248-25388-00	PULLER, chain 1	1	
46	90153-08011	SCREW, hexagon	2	
47	95301-08700	NUT	2	
48	94580-24110	CHAIN	1	
49	94680-24001	JOINT, chain	1	

FIG. 25 HANDLEBAR•CABLE



REF. NO.	PART NO.	DESCRIPTION	Q'TY	REMARKS
1	212-26111-00	HANDLEBAR	1	
2	1E2-26311-00	CABLE, throttle 1	1	
3	420-26312-01	CABLE, throttle 2	1	
4	336-26321-01	CABLE, Pump	1	
5	214-26261-00	CONNECTOR, cable	1	
6	90170-10038	NUT	1	
7	1E2-26335-00	CABLE, clutch	1	
8	92901-06600	WASHER, Plate	1	
9	164-26363-00	END, cable	1	
10	306-26242-10	GRIP (R.H)	1	
11	1V1-26243-00	TUBE, throttle guide	1	
12	235-26241-10	GRIP (L.H)	1	
13	395-26290-00	MIRROR ASSY (R.H)	1	
14	266-26290-10	MIRROR ASSY (L.H)	1	
15	1E2-26341-00	CABLE, brake	1	
16	90501-08038	SPRING, compression	1	
17	90175-06013	NUT, wing	1	
18	90249-12008	PIN	1	

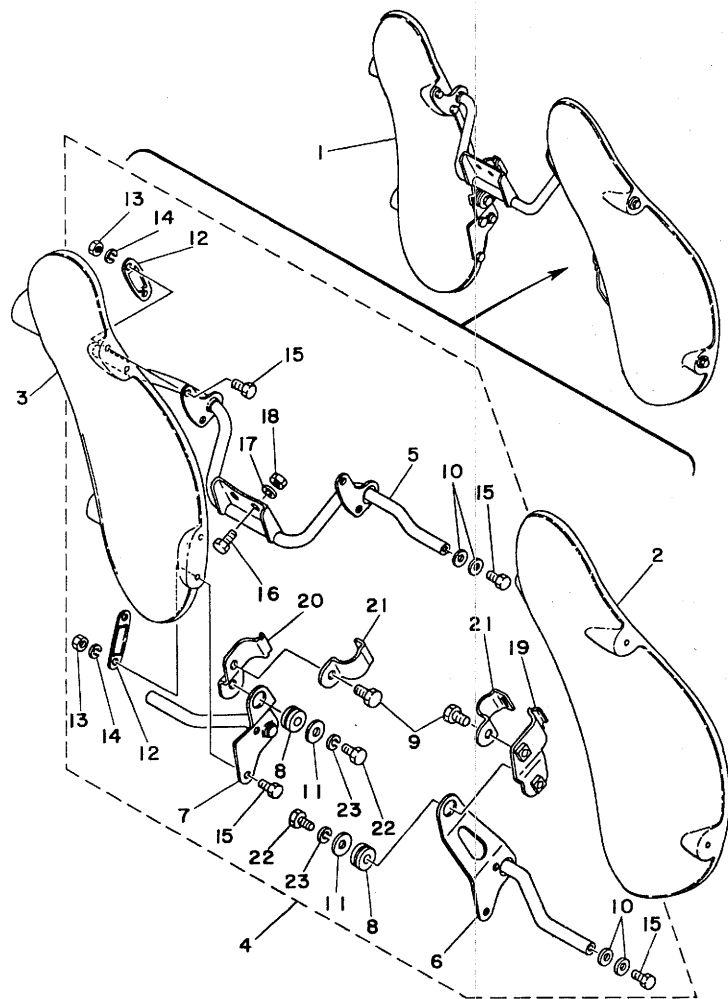
FIG. 26 STAND•FOOTREST



REF. NO.	PART NO.	DESCRIPTION	Q'TY	REMARKS
1	1E2-27111-50	STAND, main	1	
2	336-27112-00	SHAFT, main stand	1	
3	307-27115-00	LINK, main stand	1	
4	90506-29054	SPRING, tension	1	
5	116-27114-00	STOPPER, main stand	1	
6	93430-12008	CIRCLIP	1	
7	2T3-27211-00	PEDAL, brake	1	
8	90508-32056	SPRING, torsion	1	
9	307-27231-00	ROD, brake	1	
10	91401-20012	PIN, cotter	1	
11	92901-06600	WASHER, Plate	1	
12	90501-10245	SPRING, compression	1	
13	90249-12008	PIN	1	
14	90175-06013	NUT, wing	1	
15	1E2-27411-50	FOOTREST 1	1	
16	122-27413-00	COVER, footrest	2	
17	95821-08020	BOLT, flange	1	
18	92901-08100	WASHER, spring	1	
19	1E2-27311-50	STAND, side	1	
20	90506-25047	SPRING, tension	1	
21	90109-08032	BOLT	1	
22	95301-08700	NUT	1	

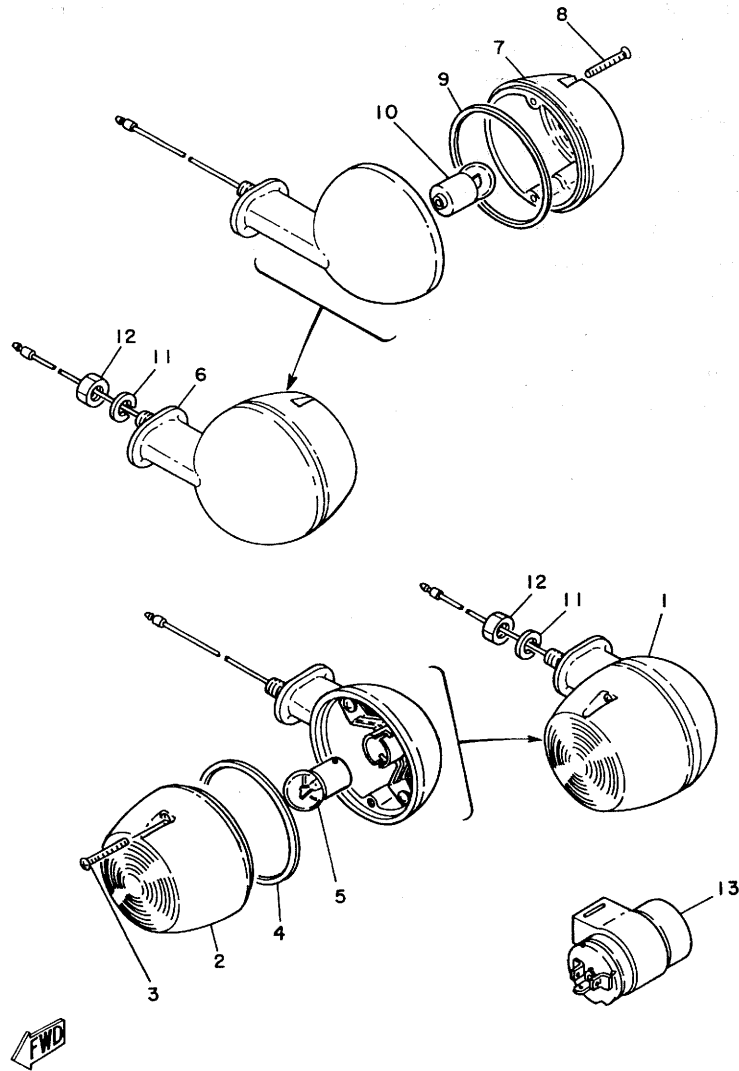


FIG. 27 LEG SHIELD



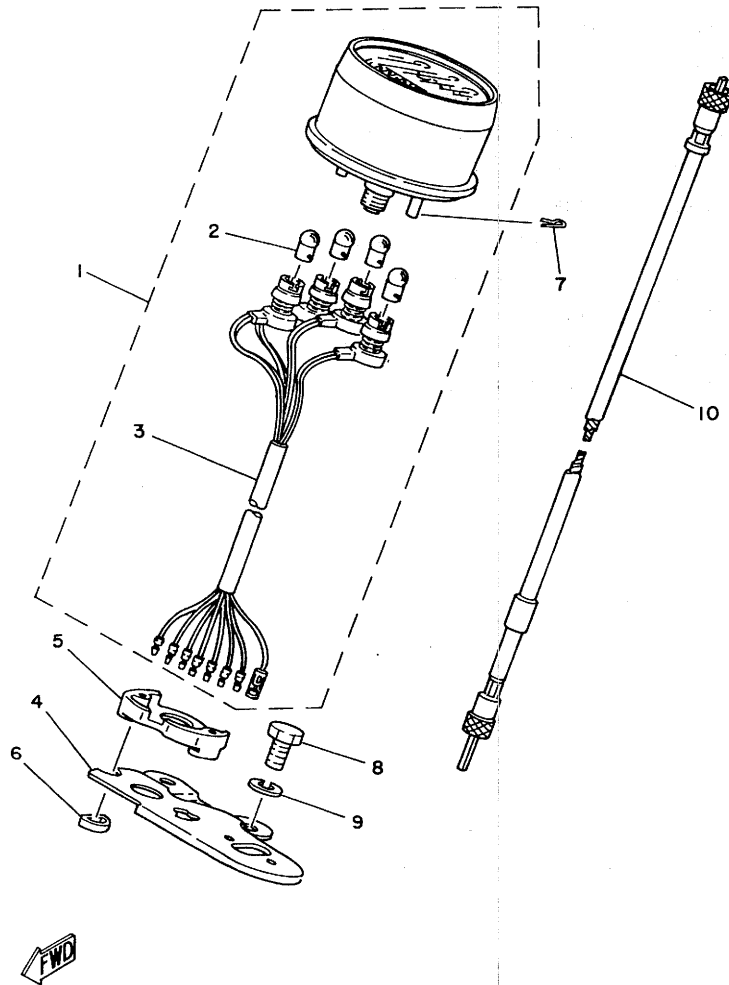
REF. NO.	PART NO.	DESCRIPTION	Q'TY	REMARKS
1	1E2-28300-01	LEG SHIELD ASSY	1	
2	137-28311-00	•LEG SHIELD 1	1	
3	137-28312-00	•LEG SHIELD 2	1	
4	1E2-28320-01	•LEG SHIELD STAY SET	1	
5	1E2-28321-00	••STAY, leg shield (L.H)	1	
6	1E2-28322-00	••STAY, leg shield (R.H)	1	
7	1E2-28332-00	••STAY, leg shield	1	
8	168-21638-00	••DAMPER 1	2	
9	90109-08430	••BOLT	2	
10	90201-06070	••WASHER, Plate	8	
11	90201-12190	••WASHER, Plate	2	
12	90209-07078	••WASHER	4	
13	95303-06600	••NUT	8	
14	92901-06100	••WASHER, sPring	8	
15	97313-06016	••BOLT	12	
16	97301-08016	••BOLT	2	
17	92901-08100	••WASHER, sPring	2	
18	95301-08600	••NUT	2	
19	1E2-28335-01	••STAY, leg shield (L.H)	1	
20	1E2-28336-01	••STAY, leg shield (R.H)	1	
21	1E2-28337-01	••HOLDER	2	
22	97301-08016	••BOLT	2	
23	92901-08100	••WASHER, sPring	2	

FIG. 28 FLASHER LIGHT



REF. NO.	PART NO.	DESCRIPTION	Q'TY	REMARKS
1	1E2-83310-10-93	FRONT FLASHER LIGHT ASSY	1	chrome-Plated
2	183-83332-21	.LENS, flasher	1	
3	183-83333-21	.SCREW, lens fitting	2	
4	183-83313-70	.GASKET, flasher lens	1	
5	136-83311-20	.BULB (12V-8W)	1	
6	1E2-83330-10-93	REAR FLASHER LIGHT ASSY	1	chrome-Plated
7	183-83332-21	.LENS, flasher	1	
8	183-83333-21	.SCREW, lens fitting	2	
9	183-83313-70	.GASKET, flasher lens	1	
10	136-83311-20	.BULB (12V-8W)	1	
11	92901-08100	WASHER, sPring	4	
12	95301-08600	NUT	4	
13	1E2-83350-20	FLASHER RELAY ASSY	1	

FIG. 29 SPEEDOMETER



REF. NO.	PART NO.	DESCRIPTION	Q'TY	REMARKS
1	1E2-83510-20	SPEEDOMETER ASSY	1	UR km/h
	1E2-83510-40	SPEEDOMETER ASSY	1	UR mile/h
2	123-83516-21	•BULB (12V-3.4W)	4	
3	1E2-83520-00	•SOCKET ASSY	1	
4	1E2-83519-00	BRACKET, meter	1	
5	237-83523-00	DAMPER	1	
6	90209-05029	WASHER	2	
7	90468-10050	CLIP	2	
8	97301-08014	BOLT	2	
9	92901-08100	WASHER, sPring	2	
10	353-83550-20	SPEEDOMETER CABLE ASSY	1	

FIG. 30 HEADLIGHT

REF. NO.	PART NO.	DESCRIPTION	Q'TY	REMARKS
1	1E2-84330-00-93	BODY ASSY	1	chrome-Plated
2	372-84310-05	HEADLIGHT UNIT ASSY	1	
3	237-84315-00	•RIM, headlight	1	
4	237-84320-00	•LENS ASSY	1	
5	195-84324-00	•SPRING, reflector	4	
6	235-84314-00	•BULB (12V-35/25W)	1	
7	357-84312-00	•SOCKET	1	
8	90152-05005	SCREW, countersunk	1	

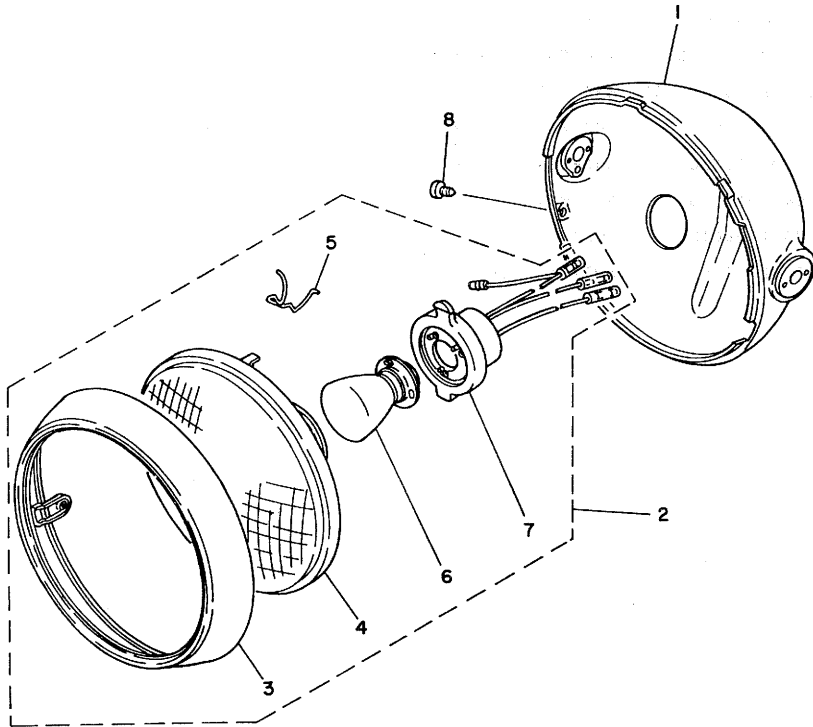
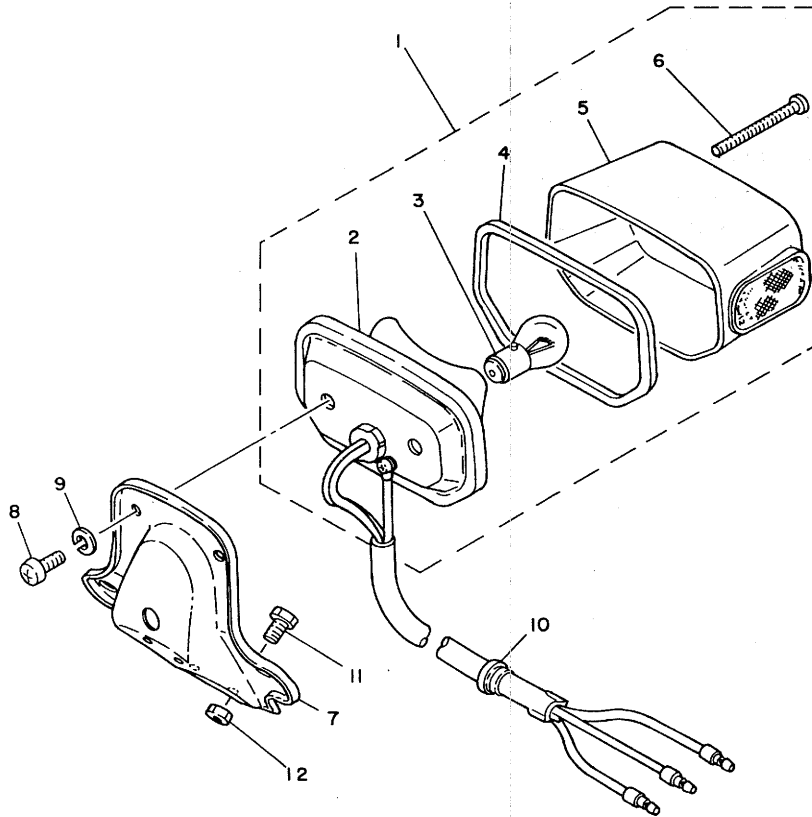


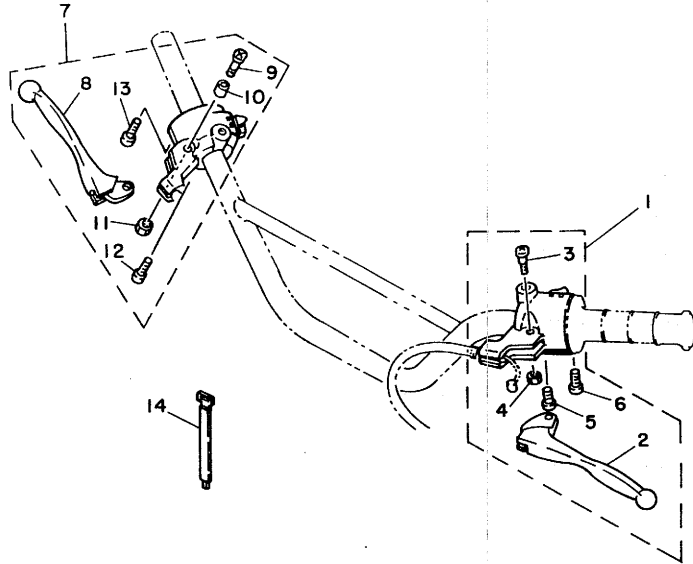
FIG. 31 TAILLIGHT



REF. NO.	PART NO.	DESCRIPTION	Q'TY	REMARKS
1	1E2-84710-00	TAILLIGHT UNIT ASSY	1	
2	1E2-84711-00	•BASE, taillight	1	
3	136-84714-01	•BULB (12V-20/8W)	1	
4	296-84523-00	•GASKET, lens	1	
5	296-84521-00	•LENS, taillight	1	
6	127-84524-30	•SCREW, lens fitting	2	
7	372-84751-00-35	BRACKET, licence	1	silver
8	92501-06012	SCREW, Pan head	2	
9	92901-06100	WASHER, sPring	2	
10	90480-12013	GROMMET	1	
11	97301-06012	BOLT	4	
12	95702-06100	NUT, flange	4	

FWD

FIG. 33 HANDLE SWITCH-LEVER



REF. NO.	PART NO.	DESCRIPTION	Q'TY	REMARKS
1	1E2-82910-00-94	LEVER HOLDER ASSY 1	1	al chrome
2	137-83912-02-38	•LEVER 1	1	clear buffing
3	90149-05120	•SCREW	1	
4	95601-05100	•NUT, u	1	
5	98501-05018	•SCREW, Pan head	1	
6	98501-05022	•SCREW, Pan head	2	
7	1E2-82920-30-94	LEVER HOLDER ASSY 2	1	al chrome
8	232-83922-31-38	•LEVER 2	1	clear buffing
9	98501-05025	•SCREW, Pan head	1	
10	137-83913-01	•COLLAR, lever 1	1	
11	95601-05100	•NUT, u	1	
12	98501-05018	•SCREW, Pan head	1	
13	98501-05022	•SCREW, Pan head	2	
14	437-83936-00	BAND, switch cord	5	

FWD

REPAIR KIT

FIG. 34 REPAIR KIT

REF. NO.	PART NO.	DESCRIPTION	Q'TY	REMARKS
1	479-11630-02	PISTON ASSY (STD)	1	
2	479-11631-03-97	.PISTON (STD)	1	
3	479-11601-00	.PISTON RING SET (STD)	1	
4	137-11633-00	.PIN, Piston	1	
5	93450-17025	.CIRCLIP	2	
6	479-11630-12	PISTON ASSY (1ST O/S)	1	
7	479-11635-03	.PISTON (1ST O/S 0.25MM)	1	
8	479-11601-10	.PISTON RING SET (1ST O/S)	1	
9	137-11633-00	.PIN, Piston	1	
10	93450-17025	.CIRCLIP	2	
11	479-11630-22	PISTON ASSY (2ND O/S)	1	
12	479-11636-03	.PISTON (2ND O/S 0.50MM)	1	
13	479-11601-20	.PISTON RING SET (2ND O/S)	1	
14	137-11633-00	.PIN, Piston	1	
15	93450-17025	.CIRCLIP	2	
16	479-11630-32	PISTON ASSY (3RD O/S)	1	
17	479-11637-03	.PISTON (3RD O/S 0.75MM)	1	
18	479-11601-30	.PISTON RING SET (3RD O/S)	1	
19	137-11633-00	.PIN, Piston	1	
20	93450-17025	.CIRCLIP	2	
21	479-11630-42	PISTON ASSY (4TH O/S)	1	
22	479-11638-03	.PISTON (4TH O/S 1.00MM)	1	
23	479-11601-40	.PISTON RING SET (4TH O/S)	1	
24	137-11633-00	.PIN, Piston	1	
25	93450-17025	.CIRCLIP	2	
26	1V0-11650-00	CONNECTING ROD ASSY	1	
27	1V0-11651-00	.ROD, connecting	1	

FIG. 34 REPAIR KIT

REF. NO.	PART NO.	DESCRIPTION	Q'TY	REMARKS
28	3M5-11681-00	.PIN, crank 1	1	
29	93310-42231	.BEARING, cylindrical	1	
30	90209-22071	.WASHER	2	
31	93310-216A3	.BEARING, cylindrical	1	
32	1E2-W0001-10	GASKET KIT	1	
33	90430-12038	.GASKET	1	
34	248-11351-00	.GASKET, cylinder	1	
35	1E2-11181-00	.GASKET, cylinder head 1	1	
36	1E2-15455-00	.GASKET 1	1	
37	315-15451-02	.GASKET, crankcase cover	1	
38	93210-19123	.O-RING	1	
39	93210-18023	.O-RING	1	
40	137-15353-00	.GASKET, drain	1	
41	1E2-14416-00	.GASKET, air cleaner	1	
42	314-13621-02	.GASKET, valve seat	2	
43	248-13556-70	.GASKET, manifold	1	
44	304-14184-00	.GASKET, float chamber	1	
45	152-14613-00	.GASKET, exhaust Pipe	1	
46	132-14714-01	.GASKET, muffler	2	
47	126-13116-00	.GASKET, PumP case	1	
48	90430-04004	.GASKET	1	
49	1E2-W0003-00	OIL SEAL KIT	1	
50	93102-25061	.OIL SEAL	1	
51	93103-28011	.OIL SEAL	1	
52	93104-11028	.OIL SEAL	1	
53	132-15389-00	.SEAL, Push rod	1	
54	93102-26042	.OIL SEAL	1	
55	93109-14005	.OIL SEAL	1	

FIG. 34 REPAIR KIT

REF. NO.	PART NO.	DESCRIPTION	Q'TY	REMARKS
56	93104-20017	.OIL SEAL	1	
57	93101-10002	.OIL SEAL	1	

INDEX

NUMERICAL INDEX

NUMERICAL INDEX

PART NO.	REF. NO.	PART NO.	REF. NO.	PART NO.	REF. NO.	PART NO.	REF. NO.	PART NO.	REF. NO.	PART NO.	REF. NO.
1E2-W0001-10	34-32	1V0-11651-00	2- 4	137-14143-38	6- 4	498-15371-00	8-15	427-17231-00	12-15	1E2-21711-00-75	17- 1
1E2-W0003-00	34-49		34-27	248-14147-00	6-38	214-15385-00	13-18	248-17241-00	12-16	214-21761-00	17- 7
479-11111-00	1- 1	3M5-11681-00	2- 7	558-14147-00	6-11	132-15389-00	11-23	463-17285-00	12-17	183-21770-11	17-10
463-11127-02	1- 2		34-28	802-14158-00	6-21		34-53	479-17410-00	12- 1	1E2-21778-00	17-13
463-11161-01	1- 6	479-13101-01	4- 1	802-14161-00	6-22	1E2-15410-00	9- 1	479-17411-01	12- 2	1E2-21780-00	17-14
1E2-11181-00	1- 4	126-13116-00	4-16	802-14169-00	6-24	1E2-15415-00	9- 9	315-17421-01	12-10	1E2-21781-01	17- 5
	34-35		34-47	304-14171-00	6-29	463-15416-00	9-19	164-17427-00-04	12-13	1E2-21782-01	17-19
479-11311-01	1- 5	363-13133-01	4-13	132-14173-00	6-33	336-15418-00	9- 2	164-17427-00-06	12-13	1E2-22110-01-33	18- 1
248-11351-00	1- 7	137-13137-00-03	4- 2	152-14174-00	6-31	479-15421-00-Y4	9-13	164-17427-00-08	12-13	307-22123-00	18- 2
	34-34	137-13137-00-05	4- 2	539-14181-08	6-10	315-15451-02	9-15	164-17427-00-10	12-13	1E2-22141-00	18- 4
1E2-11400-04	2- 1	137-13137-00-10	4- 2	304-14184-00	6- 9		34-37	164-17427-00-12	12-13	173-22151-00	18- 6
1E2-11412-02	2- 2	137-13138-01	4- 3		34-44	1E2-15455-00	9-12	174-17461-40	12-25	1N8-22210-41-93	18-18
452-11422-00	2- 3	278-13169-00	4- 9	314-14185-00	6- 7		34-36	174-17461-50	12-25	164-22216-00	18- 3
479-11601-00	2-19	248-13174-00	4-23	127-14186-00	6- 8	463-15492-00	8-12	174-17461-60	12-25	1E2-22310-00-35	18-12
	34- 3	214-13175-02	4-14	168-14190-25	6- 5	122-15612-02	10-16	401-17471-00	12-20	148-22315-00	18-13
479-11601-10	2-19	137-13176-00	4-19	214-14195-00	6- 6	156-15618-01	10-20	248-18101-01	14- 1	1E2-23100-11-93	20- 1
	34- 8	248-13178-00	4-20	183-14196-00	6-37	1E2-15620-01	10-15	1E2-18111-01-91	14-10	337-23111-60	20-18
479-11601-20	2-19	353-13552-01	4-10	183-14197-01	6-36	315-15641-00	10- 2	132-18113-01	14-11	241-23112-40	20-17
	34-13	315-13555-00	5-10	304-14261-00	6-34	401-15651-00	10-12	132-18140-01	13-21	337-23114-60	20-16
479-11601-30	2-19	248-13556-70	5- 9	1E2-14411-00	5-16	132-15653-00-10	10-13	463-18511-00	13-12	174-23116-00	20-15
	34-18		34-43	1E2-14412-00	5-18	132-15653-00-12	10-13	463-18512-00	13-13	1E2-23121-01-93	20-23
479-11601-40	2-19	463-13565-00	5- 6	1E2-14416-00	5-19	132-15653-00-14	10-13	463-18513-00	13-14	1R0-23122-00-93	20-12
	34-23	345-13610-10	5- 1		34-41	248-15654-00	10- 4	214-18531-00	13-15	1E2-23124-00	20- 4
479-11630-02	34- 1	1A0-13613-00	5- 2	1E2-14429-01	5-21	315-15660-01	10- 1	248-18531-00	13-16	137-23125-01	20- 6
479-11630-12	34- 6	345-13616-70	5- 3	1E2-14437-00	5-20	214-15664-00	10- 7	336-18540-00	13- 1	1E2-23126-00-35	20- 2
479-11630-22	34-11	314-13621-02	5- 5	1E2-14450-00	5-17	257-15668-00	10-10	136-18542-00	13- 7	1E2-23131-01-93	20-24
479-11630-32	34-16		34-42	1E2-14453-00	5-14	214-15676-00	10- 8	164-18561-00	13- 4	1R0-23132-00-93	20-13
479-11630-42	34-21	1E2-14101-50	6- 1	1E2-14611-50	7- 1	401-16111-00-30	11-14	164-18571-01	13- 8	1E2-23136-00-35	20- 3
479-11631-03-97	2-15	1E2-14101-80	6- 1	152-14613-00	7- 2	515-16150-01	11- 2	164-18589-00	13-10	137-23141-10	20-10
	34- 2	479-14112-25	6-15		34-45	276-16154-00	11- 4	1R0-21110-10-33	15- 1	1E2-23142-00	20-11
479-11631-03-98	2-15	500-14115-00	6-12	1E2-14710-50	7- 8	515-16301-01	11- 1	1E2-21170-00-33	15-10	137-23143-00	20- 9
		360-14116-01	6-16	132-14713-00	7- 7	307-16321-00	11- 8	1R0-21308-00	15-15	137-23145-01	20- 8
137-11633-00	2-16	2A0-14122-00	6-26	132-14714-01	7- 6	336-16324-00	11- 6	1E2-21510-70-93	16- 1	137-23147-00	20- 5
	34- 4	174-14123-00	6-28		34-46	241-16341-01	11-28	372-21510-00-93	16-27	1E2-23150-00	20- 7
	34- 9	127-14124-20	6-23	1E2-14720-50	7-18	241-16342-00	11-29	137-21517-00	16- 4	193-23163-00	20-14
	34-14	246-14126-00	6-20	463-14753-00	7- 9	132-16346-00	11-34	1E2-21581-00	16- 8	260-23318-40	20-21
	34-19	248-14131-00	6-19		7-19	132-16351-00	11- 9	479-21582-80-33	16- 7	1E2-23340-00-33	20-19
	34-24	246-14132-00	6-18	1E2-14771-50	7-12	137-16356-00	11-20	1E2-21610-00-93	16-13	122-23346-01	20-20
479-11635-03	2-15	137-14133-00	6-25	1E2-14772-00	7-17	137-16357-00	11-22	1E2-21629-00	16-22	122-23411-00	19-11
	34- 7	174-14134-00	6-27	1E2-14781-50	7-22	307-16367-00	11- 7	168-21638-00	27- 8	156-23411-00	19- 1
479-11636-03	2-15	156-14135-00	6-30	248-15111-03	8- 1	132-16369-00	11- 3	202-21681-00	16-26	122-23412-00	19-12
	34-12	127-14137-00	6-17	444-15118-00	8- 7	1E7-16371-00	11- 5	1E2-21705-00-L3	17- 6	156-23412-00	19-10
479-11637-03	2-15	353-14138-00	6-32	444-15121-02	8-11	314-16396-01	11-24	1E2-21705-00-33	17- 6	122-23416-00	19- 9
	34-17	558-14141-16	6- 3	304-15128-00	8-13	437-17121-01	12- 7	1E2-21705-00-63	17- 6	1E2-23435-00-98	19- 2
479-11638-03	2-15	260-14142-30	6- 2	137-15353-00	13-20	427-17131-00	12- 6	1E2-21705-00-75	17- 6	164-23441-00-98	19- 3
	34-22	137-14143-30	6- 4		34-40	437-17141-00	12- 3	1E2-21711-00-L3	17- 1	1E2-23480-00	19-15
1V0-11650-00	34-26	137-14143-32	6- 4	248-15357-00	9- 8	248-17211-00	12-11	1E2-21711-00-33	17- 1	584-23484-01	19-17
		137-14143-34	6- 4	401-15362-00	9-21	427-17221-00	12-14	1E2-21711-00-63	17- 1	1E2-24110-03-01	21- 1
		137-14143-36	6- 4								

NUMERICAL INDEX

PART NO.	REF. NO.	PART NO.	REF. NO.
1E2-24110-03-02	21- 1	183-25315-00	23- 6
1E2-24110-03-03	21- 1		24- 3
1E2-24110-03-04	21- 1	437-25320-10	24- 9
322-24161-00	21- 6	183-25330-01	24-10
122-24181-00	21- 7	248-25351-00	24-12
307-24182-00	21- 8	148-25353-00	23-20
1E2-24244-01	21- 2	1R0-25355-00	24-13
1E2-24245-01	21- 3	304-25364-01	24- 8
1E2-24246-01	21- 4	183-25366-01	24-16
1E2-24247-01	21- 5	1E2-25371-10	24-30
304-24500-10	21-12	382-25381-00	24-38
357-24515-10	21-19	183-25387-00	24-20
357-24521-10	21-17	214-25388-00	24-44
357-24522-10	21-18	248-25388-00	24-45
357-24524-10	21-13	482-25412-00	24-23
2N3-24528-00	21-16	183-25434-10-33	24-21
357-24529-10	21-14	183-25435-10-33	24-21
2N3-24531-00	21-20	183-25436-10-33	24-21
357-24532-10	21-21	183-25437-10-33	24-21
2N3-24535-00	21-15	183-25438-10-33	24-21
122-24612-01	21-23	212-26111-00	25- 1
127-24650-02	21-22	235-26241-10	25-12
1E2-24710-00	22- 8	306-26242-10	25-10
1E2-24711-00	22- 9	1V1-26243-00	25-11
1E2-24730-00	22- 1	214-26261-00	25- 5
1E2-24731-00	22- 2	266-26290-10	25-14
372-24750-00	22-11	395-26290-00	25-13
1E2-24810-01-93	22-10	1E2-26311-00	25- 2
1E2-24821-00	22-14	420-26312-01	25- 3
1E2-24822-00	22-15	336-26321-01	25- 4
1E2-24830-00	22- 7	1E2-26335-00	25- 7
1E2-24830-10	22-18	1E2-26341-00	25-15
136-25104-00	23-24	164-26363-00	25- 9
227-25111-00-38	23- 1	1E2-27111-50	26- 1
214-25117-00	23- 2	336-27112-00	26- 2
214-25118-00	23-30	116-27114-00	26- 5
1E2-25121-00-38	23- 7	307-27115-00	26- 3
136-25130-00	23- 8	2T3-27211-00	26- 7
372-25135-00	23-10	307-27231-00	26- 9
109-25136-00	23-11	1E2-27311-50	26-19
102-25137-00	23-31	1E2-27411-50	26-15
372-25138-00	23-12	122-27413-00	26-16
214-25149-01	23-17	120-27431-00	18- 7
1E2-25151-00	23-19	120-27433-00	18- 8
1E2-25155-00	23-21	1E7-28100-10	15-17
372-25181-00	23-33	1E2-28300-01	27- 1
1E2-25304-90	24-25	137-28311-00	27- 2
391-25311-00-38	24- 1	137-28312-00	27- 3

NUMERICAL INDEX

PART NO.	REF. NO.	PART NO.	REF. NO.	PART NO.	REF. NO.	PART NO.	REF. NO.
183-83333-21	28- 3	90119-05001	11-11	90209-07078	27-12		
	28- 8	90119-08011	20-22	90209-08050	15- 9		
1E2-83350-20	28-13	90143-07021	3-21	90209-10020	19- 6		
1E2-83371-21	32-23	90149-05120	33- 3	90209-10108	10-18		
1E2-83373-00	32-21	90149-06103	3-23	90209-22071	2- 6		
1E2-83510-20	29- 1	90149-08094	14- 4		34-30		
1E2-83510-40	29- 1	90152-05005	30- 8	90215-08014	14- 6		
123-83516-21	29- 2	90153-08011	24-46	90215-16020	12-28		
1E2-83519-00	29- 4	90170-08029	14- 5	90240-06052	18-10		
1E2-83520-00	29- 3	90170-10038	25- 6	90249-12008	25-18		
237-83523-00	29- 5	90170-12060	11-12		26-13		
353-83550-20	29-10	90170-12065	18- 5	90260-06024	9- 3		
137-83912-02-38	33- 2	90170-20224	24-39	90269-04003	19-18		
137-83913-01	33-10	90171-14020	23-34	90280-03017	2- 8		
232-83922-31-38	33- 8		24-42	90282-05005	11-15		
437-83936-00	33-14	90175-06012	5-25	90338-04010	32-26		
372-84310-05	30- 2	90175-06013	25-17	90338-20023	9-14		
357-84312-00	30- 7		26-14	90340-12005	8-17		
235-84314-00	30- 6	90176-10013	18-21	90387-15111	23-29		
237-84315-00	30- 3	90179-08004	7- 5	90387-15425	24-40		
237-84320-00	30- 4	90179-08025	1- 9	90387-20165	24-41		
195-84324-00	30- 5	90179-08168	24-24	90387-20170	2-10		
1E2-84330-00-93	30- 1	90179-12244	11-16	90387-20491	12-26		
296-84521-00	31- 5	90179-16018	12-27	90430-04004	4- 7		
296-84523-00	31- 4	90179-25033	19- 8		34-48		
127-84524-30	31- 6	90185-08054	15- 5	90430-12038	8-18		
1E2-84710-00	31- 1	90201-06067	16-23		34-33		
1E2-84711-00	31- 2		17- 3	90430-29114	17-11		
136-84714-01	31- 3	90201-06070	27-10	90445-05266	4-12		
372-84751-00-35	31- 7	90201-07076	23-15	90445-08248	32- 9		
90101-06278	23-22	90201-08544	5-12	90445-09086	21- 9		
	24-14	90201-08624	4-15	90445-09089	21-10		
	13-19	90201-10141	18-19	90445-09106	17- 8		
90105-08029	15- 2	90201-12166	13- 9	90446-07009	8-16		
90105-10006	19- 7	90201-12190	27-11	90460-49058	5-15		
90105-10039	15- 3	90201-12362	1-10	90462-05012	3-20		
90105-10040	15- 4	90201-14577	22- 6	90464-20031	32-22		
90106-08027	18-20	90201-14586	14- 8	90467-08003	17- 9		
90109-06001	13-22	90201-17558	11-18		21-11		
90109-06026	17-18	90201-20266	12- 4	90468-02033	4-11		
90109-08032	26-21		12- 8		4-24		
90109-08063	24-31	90201-20279	18- 9	90468-10050	29- 7		
90109-08361	24-22	90201-22283	23-16	90468-12007	24-32		
90109-08368	24-33	90202-05057	5-23	90468-26048	10- 3		
90109-08430	27- 9	90208-04029	19-19	90480-10091	15-14		
90113-06013	11-31	90208-12015	11-13	90480-12013	31-10		
90116-08067	1- 8		11-17	90480-12053	17- 2		
90116-08166	7- 3	90209-05029	29- 6	90480-14182	17-12		

NUMERICAL INDEX

NUMERICAL INDEX

PART NO.	REF. NO.	PART NO.	REF. NO.	PART NO.	REF. NO.	PART NO.	REF. NO.	PART NO.	REF. NO.	PART NO.	REF. NO.
90501-08038	25-16	92501-06060	8- 5	92901-08100	26-18	93306-20517	2-11	95301-05600	4- 4	98501-04006	3-11
90501-10245	26-12	92501-06065	8- 6		27-17	93306-30401	12-22	95301-06600	22-12		3-18
90501-20125	11-10		9-10		27-23	93306-30405	2-13		23-23	98501-04008	3- 5
90502-09024	19-16	92501-08010	8-14		28-11	93306-30414	12-19		24-15	98501-05010	7-11
90504-18005	10-17	92701-06030	15-16		29- 9	93310-216A3	2-17	95301-06700	5-24		7-21
90506-09009	14- 2	92901-04100	3- 6	92901-08200	16-20		34-31		5-28	98501-05012	12-21
90506-09013	13-23		3-19	92901-08600	16-19	93310-42231	2- 5		11-32		13- 6
90506-10019	11-33		6-14		22- 5		34-29	95301-08600	7-14		32-16
90506-16036	24-11	92901-04200	3- 7	92901-10100	15- 8	93311-31515	12-24		7-15	98501-05016	4-17
90506-18103	23- 9	92901-05100	4- 5	92902-06100	3-24	93315-31502	12-18		7-24	98501-05018	33- 5
90506-25047	26-20		7-10		3-27	93410-13004	10-14		7-25		33-12
90506-29054	26- 4		7-20		3-30	93410-20009	10- 9		16-21	98501-05022	33- 6
90508-12295	17-15		13- 5		3-33	93410-20038	12- 5		24-37		33-13
90508-26040	10- 6		32-17		32-13		12- 9		27-18	98501-05025	33- 9
90508-32056	26- 8	92901-06100	5- 8	92902-06600	3-28	93410-22014	23-18		28-12	98502-04014	6-13
90508-32207	14- 3		5-27		3-34	93410-30012	10- 5	95301-08700	24-34	98901-04008	4- 6
90560-15136	24- 2		11-26	92902-08100	3-22	93420-42007	24-17		24-47		
90560-17124	11-19		15-12	92903-06600	16-11	93430-08006	4-22		26-22		
91316-08030	5-11		16-12	93101-10002	4-18	93430-10017	13-17	95302-06600	32-14		
91401-16012	18-11		16-15		34-57	93430-12008	26- 6	95302-06700	3-31		
91401-16015	6-35		16-25	93102-20009	23- 5	93430-12009	14- 9	95303-06600	16-10		
91401-20012	24-36		17-17	93102-25061	2-12	93440-10028	10-19		27-13		
	26-10		18-15		34-50	93440-15012	12-12	95601-05100	33- 4		
91401-30030	23-35		18-17	93102-26042	12-23	93450-17025	2-18		33-11		
	24-43		22-13		34-54		34- 5	95701-10100	15- 6		
91609-40016	13- 3		27-14	93103-28011	2-14		34-10	95702-06100	31-12		
91830-21014	8- 8		31- 9		34-51		34-15	95801-06012	5-26		
	9- 4		32-25	93104-07003	23-13		34-20	95821-08020	26-17		
	9-18	92901-06200	5-22	93104-11028	11-30		34-25	97301-06012	16- 5		
91830-24016	8- 9	92901-06600	11-27		34-52	93501-04011	11-21		31-11		
92501-06010	13-11		15-13	93104-20017	10-11		19-13		32-24		
	17-16		16- 6		34-56	93503-16010	19-14	97301-06016	16-24		
92501-06012	18-14		16-16	93104-22018	24- 6	93505-32002	4- 8	97301-06025	5- 7		
	31- 8		25- 8	93105-50010	23-14	93603-22028	4-21	97301-08012	16- 2		
92501-06015	3-26		26-11	93106-26005	24-19		8-10	97301-08014	29- 8		
	3-32	92901-08100	5-13	93109-14005	14- 7	93604-22050	13- 2	97301-08016	22- 3		
	11-25		7- 4		34-55	93606-25021	9- 5		27-16		
92501-06020	15-11		7-13	93210-14104	23-32	94130-16207	23-25		27-22		
92501-06030	18-16		7-16	93210-18023	2- 9	94130-16208	24-26	97301-08040	16-17		
	9-20		7-23		34-39	94230-16063	23-26	97303-06012	16- 9		
92501-06035	9-11		7-26	93210-19123	9-22		24-27	97311-06020	14-12		
92501-06045	9-16		15- 7		34-38	94330-16009	23-27	97313-06016	27-15		
92501-06050	8- 2		16- 3	93210-42101	24- 7		24-28	97321-06012	16-14		
	8- 3		16-18	93306-00406	24-18	94416-16008	23-28	97321-08016	22-16		
	9- 6		19- 5	93306-20203	23- 3		24-29	97321-08030	10-21		
92501-06055	8- 4		22- 4	93306-20204	24- 5	94580-24110	24-48	97321-08035	19- 4		
	9- 7		22-17	93306-20205	23- 4	94680-24001	24-49	97602-03108	5- 4		
	9-17		24-35		24- 4	94701-00040	1- 3	97801-06018	17- 4		

PARTS NAME INDEX

DESCRIPTION	REF. NO.
ABSORBER 1	1- 6
ABSORBER 3	1- 2
ARMATURE	3- 2
AXLE, drive	12-10
AXLE, main	12- 2
AXLE, sProcket	24-20
AXLE, wheel	23-33
*	24-38
BALL	4- 8
*	11-21
*	19-13
*	19-14
BAND, battery	32- 3
BAND, rim (3.00-16)	23-27
*	24-28
BAND, switch cord	33-14
BAR, shift fork guide 1	13-15
*	13-16
BAR, tension	24-30
BASE, taillight	31- 2
BATTERY ASSY (GM10-3B)	32- 1
BEARING (B6004Z)	24-18
BEARING (B6202)	23- 4
*	24- 4
BEARING (B6202RS)	23- 3
BEARING (B6202Z)	24- 5
BEARING (B6205)	2-11
BEARING (B6304)	12-19
*	12-22
BEARING (B6304C3)	2-13
BEARING, cylindrical	2- 5
*	2-17
*	12-18
*	12-24
*	34-29
*	34-31
BODY ASSY	30- 1
BODY, float chamber 1	6-10
BOLT	5- 7
*	5-11
*	10-21
*	13-19
*	13-22
*	14-12
*	16- 2
*	16- 5
*	16- 9
*	16-14

PARTS NAME INDEX

DESCRIPTION	REF. NO.
BOLT	16-17
*	16-24
*	17-18
*	18-20
*	19- 4
*	22- 3
*	22-16
*	23-22
*	24-14
*	24-22
*	24-31
*	24-33
*	26-21
*	27- 9
*	27-15
*	27-16
*	27-22
*	29- 8
*	31-11
*	32-24
BOLT 1	20-20
BOLT, cap	20-18
BOLT, flange	5-26
*	26-17
BOLT, set	11-31
BOLT, stud	1- 8
*	7- 3
BOLT, washer based	15- 2
*	15- 3
*	15- 4
*	19- 7
BOLT, with washer	11-11
*	20-22
BOSS, clutch	11- 5
BOX COMP.	15-10
BRACKET, licence	31- 7
BRACKET, meter	29- 4
BRAKE SHOE COMP.	23- 8
*	24-10
BRAKE SHOE PLATE ASSY	24- 9
BREATHER	8-15
BRUSH	3- 9
BULB (12V-20/8W)	31- 3
BULB (12V-3.4W)	29- 2
BULB (12V-35/25W)	30- 6
BULB (12V-8W)	28- 5
*	28-10
BUSH	23-11

PARTS NAME INDEX

DESCRIPTION	REF. NO.
BUSH 1	18- 2
BUSH, rear shock absorber	18- 3
CABLE, brake	25-15
CABLE, clutch	25- 7
CABLE, Pump	25- 4
CABLE, throttle 1	25- 2
CABLE, throttle 2	25- 3
CAMSHAFT	23-19
*	24-12
CAP	6-24
*	18-13
CAP ASSY	21-22
CAP, cleaner case 1	5-18
CAP, handle lock	19-17
CAP, Plunger	6-31
CARBURETOR ASSY 1	6- 1
*	6- 1
CARRIER ASSY	22-10
CASE, air cleaner 1	5-16
CHAIN	24-48
CHAIN CASE ASSY	18-12
CIRCLIP	2-18
*	4-22
*	10- 5
*	10- 9
*	10-14
*	10-19
*	12- 5
*	12- 9
*	12-12
*	13-17
*	14- 9
*	23-18
*	24-17
*	26- 6
*	34- 5
*	34-10
*	34-15
*	34-20
*	34-25
CLAMP	3-17
*	3-20
*	32-22
CLAMP, hose	5-15
CLIP	4-11
*	4-13
*	4-24
*	6-17
*	10- 3

PARTS NAME INDEX

DESCRIPTION	REF. NO.
CLIP	17- 9
*	21-11
*	24-32
*	29- 7
CLIP, Plunger	6-32
CLUTCH ASSY	11- 1
CLUTCH, dog	12-17
CLUTCH, hub	24-16
CLUTCH, meter	23-17
COLLAR	2-10
*	12-26
*	23-29
*	24-40
*	24-41
COLLAR, lever 1	33-10
CONDENSER 2	3- 8
CONNECTING ROD ASSY	34-26
CONNECTOR, cable	25- 5
CONTACT BREAKER ASSY	3- 4
CORD, high tension 1	32-11
COVER	8-12
COVER, ball race 2	19- 9
COVER, chain case	9- 2
COVER, crankcase 2	9-13
COVER, double seat	22- 2
COVER, footrest	26-16
COVER, generator	9- 9
COVER, hub dust	23-30
COVER, kick lever	10-20
COVER, lead wire	32- 5
COVER, oil pump	9-19
COVER, outer 1	20-12
COVER, outer 2	20-13
COVER, Plunger cap	6-33
COVER, rear footrest	18- 8
COVER, shift Pedal	14-11
COVER, side (L.H)	17- 1
*	17- 1
*	17- 1
*	17- 1
COVER, single seat	22- 9
COVER, spring	10- 8
COVER, upper 1	20-23
COVER, upper 2	20-24
CRANK 1	2- 2
CRANK 2	2- 3
CRANKCASE COVER ASSY 1	9- 1
CRANKCASE 1	8- 1

PARTS NAME INDEX

DESCRIPTION	REF. NO.
CRANKCASE 2	8-11
CRANKSHAFT ASSY	2- 1
CROWN, handle	19- 2
CUP, filter	21-17
CYLINDER 1	1- 5
DAMPER	24- 8
*	29- 5
DAMPER 1	27- 8
DAMPER, locating 1	17-13
*	21- 7
DAMPER, locating 2	21- 8
DOUBLE SEAT ASSY	22- 1
DUCT	5-20
ELEMENT ASSY, air cleaner	5-17
EMBLEM 1	17- 5
*	21- 6
EMBLEM 2	17-19
END, cable	25- 9
FIXTURE, timing Plate	3-13
FLANGE, spacer	23- 6
*	24- 3
FLASHER RELAY ASSY	28-13
FLOAT	6- 7
FOOTREST 1	26-15
FOOTREST, rear 1	18- 7
FORK, shift 1	13-12
FORK, shift 2	13-13
FORK, shift 3	13-14
FRAME COMP	15- 1
FRONT FENDER COMP.	16- 1
*	16-27
FRONT FLASHER LIGHT ASSY 1	28- 1
FRONT FORK ASSY	20- 1
FUEL COCK ASSY 1	21-12
FUEL TANK COMP.	21- 1
*	21- 1
*	21- 1
FUSE	32- 8
FUSE HOLDER ASSY	32- 7
GASKET	4- 7
*	6-20
*	8-18
*	17-11
*	20-14
*	20-16
*	21-18
*	21-21

PARTS NAME INDEX

DESCRIPTION	REF. NO.
GASKET	34-33
*	34-48
GASKET KIT	34-32
GASKET 1	9-12
*	34-36
GASKET, air cleaner	5-19
*	34-41
GASKET, cap	21-23
GASKET, crankcase cover	9-15
*	34-37
GASKET, cylinder	1- 7
*	34-34
GASKET, cylinder head 1	1- 4
*	34-35
GASKET, drain	13-20
*	34-40
GASKET, exhaust Pipe	7- 2
*	34-45
GASKET, flasher lens	28- 4
*	28- 9
GASKET, float chamber	6- 9
*	34-44
GASKET, lens	31- 4
GASKET, manifold	5- 9
*	34-43
GASKET, muffler	7- 6
*	34-46
GASKET, Pump case	4-16
*	34-47
GASKET, valve seat	5- 5
*	34-42
GAUGE, level	17- 7
GEAR, drive	23-10
GEAR, drive (28T)	4-20
GEAR, kick (27T)	10- 2
GEAR, kick idle (25T)	10-12
GEAR, meter	23-12
GEAR, Primary drive	11-14
GEAR, 1st wheel (35T)	12-11
GEAR, 2nd Pinion (15T)	12- 7
GEAR, 2nd wheel (30T)	12-14
GEAR, 3rd Pinion (19T)	12- 6
GEAR, 3rd wheel (26T)	12-15
GEAR, 4th Pinion (23T)	12- 3
GEAR, 4th wheel (23T)	12-16
GOVERNOR ASSY	3-14
GRAPHIC, fuel tank 1	21- 2
GRAPHIC, fuel tank 2	21- 3

PARTS NAME INDEX

DESCRIPTION	REF. NO.
GRAPHIC, fuel tank 3	21- 4
GRAPHIC, fuel tank 4	21- 5
GRIP (L.H.)	25-12
GRIP (R.H.)	25-10
GROMMET	9- 8
*	15-14
*	17- 2
*	17-12
*	31-10
GUARD, mud	16-22
GUIDE, cover lower	20-15
GUIDE, sPring	10- 7
HANDLEBAR	25- 1
HEAD, cylinder 1	1- 1
HEADLIGHT UNIT ASSY	30- 2
HELMET HANGER ASSY	15-15
HOLDER	6-34
*	8- 7
*	8-13
*	27-21
HOLDER, cable 1	20-21
HOLDER, handle uPper	19- 3
HOLDER, kick gear	10- 4
HOLDER, oil Pipe	4-23
HOLDER, shift cam	13- 8
HOOK, sPring	11-34
HORN	32-23
HOSE	4-12
*	8-16
*	17- 8
*	21- 9
*	21-10
*	32- 9
HOUSING, Push screw	11-24
HUB, front	23- 1
HUB, rear	24- 1
IGNITION COIL ASSY	32-10
JET, main (#150)	6- 4
JET, main (#160)	6- 4
JET, main (#170)	6- 4
JET, main (#180)	6- 4
JET, main (#190)	6- 4
JET, Pilot (#30.0)	6- 2
JOINT, air cleaner 1	5-14
JOINT, carburetor	5- 6
JOINT, chain	24-49
KEY, straight	11-15
KEY, woodruff	2- 8

PARTS NAME INDEX

DESCRIPTION	REF. NO.
KICK AXLE ASSY	10- 1
KICK CRANK ASSY	10-15
LEAD, horn	32-21
LEG SHIELD ASSY	27- 1
LEG SHIELD STAY SET	27- 4
LEG SHIELD 1	27- 2
LEG SHIELD 2	27- 3
LENS ASSY	30- 4
LENS, flasher	28- 2
*	28- 7
LENS, taillight	31- 5
LEVER HOLDER ASSY 1	33- 1
LEVER HOLDER ASSY 2	33- 7
LEVER 1	33- 2
LEVER 2	33- 8
LEVER, camshaft	24-13
LEVER, camshaft 1	23-21
LEVER, cock	21-13
LEVER, kick	10-16
LEVER, Push	11-29
LINK, main stand	26- 3
LUBRICATOR	3-15
MAIN AXLE COMP.	12- 1
MAIN SWITCH ASSY	32-15
MANIFOLD, intake	5-10
METAL, slide 1	20- 6
METAL, worm shaft outer	4-19
MIRROR ASSY (L.H.)	25-14
MIRROR ASSY (R.H.)	25-13
MUFFLER ASSY 1	7- 8
MUFFLER ASSY 2	7-18
NEEDLE	6-16
NEEDLE VALVE ASSY	6- 5
NET, filter 2	21-19
NEUTRAL SWITCH ASSY	32-18
NOZZLE	4-10
NOZZLE, main	6- 3
NUT	1- 9
*	3-31
*	4- 4
*	5-24
*	5-28
*	7- 5
*	7-14
*	7-15
*	7-24
*	7-25
*	11-12

PARTS NAME INDEX

DESCRIPTION	REF. NO.
NUT	11-16
*	11-32
*	12-27
*	14- 5
*	16- 10
*	16-21
*	18- 5
*	19- 8
*	21-20
*	22-12
*	23-23
*	24-15
*	24-24
*	24-34
*	24-37
*	24-39
*	24-47
*	25- 6
*	26-22
*	27-13
*	27-18
*	28-12
*	32-14
NUT, cable adjusting	6-22
NUT, castle	23-34
*	24-42
NUT, crown	18-21
NUT, flange	15- 6
*	31-12
NUT, muffler joint	7- 7
NUT, self-locking	15- 5
NUT, u	33- 4
*	33-11
NUT, wing	5-25
*	25-17
*	26-14
O-RING	2- 9
*	6-11
*	6-38
*	9-22
*	20- 5
*	21-16
*	23-32
*	24- 7
*	34-38
*	34-39
OIL PUMP ASSY	4- 1
OIL SEAL	2-12

PARTS NAME INDEX

DESCRIPTION	REF. NO.
OIL SEAL	2-14
*	4-18
*	10-11
*	11-30
*	12-23
*	14- 7
*	20- 8
*	23- 5
*	23-13
*	23-14
*	24- 6
*	24-19
*	34-50
*	34-51
*	34-52
*	34-54
*	34-55
*	34-56
*	34-57
OIL SEAL KIT	34-49
OIL TANK ASSY	17- 6
*	17- 6
*	17- 6
*	17- 6
OIL TANK CAP ASSY	17-10
OIL TANK LOCK ASSY	17-14
OUTER NUT COMP.	20- 7
PAD, cable	16- 4
PEDAL, brake	26- 7
PEDAL, shift	14-10
PIN	25-18
*	26-13
PIN, clevis	18-10
PIN, cotter	6-35
*	18-11
*	23-35
*	24-36
*	24-43
*	26-10
PIN, crank 1	2- 7
*	34-28
PIN, dowel	4-21
*	8- 8
*	8- 9
*	8-10
*	9- 4
*	9- 5
*	9-18

PARTS NAME INDEX

DESCRIPTION	REF. NO.
PIN, dowel	13- 2
PIN, float	6- 8
PIN, Piston	2-16
*	34- 4
*	34- 9
*	34-14
*	34-19
*	34-24
PIN, sPring	13- 3
PIPE	6-36
*	6-37
PIPE, exhaust 1	7- 1
PISTON (STD)	2-15
*	2-15
*	34- 2
PISTON (1ST O/S 0.25MM)	2-15
*	34- 7
PISTON (2ND O/S 0.50MM)	2-15
*	34-12
PISTON (3RD O/S 0.75MM)	2-15
*	34-17
PISTON (4TH O/S 1.00MM)	2-15
*	34-22
PISTON ASSY (STD)	34- 1
PISTON ASSY (1ST D/S)	34- 6
PISTON ASSY (2ND D/S)	34-11
PISTON ASSY (3RD D/S)	34-16
PISTON ASSY (4TH D/S)	34-21
PISTON RING SET (STD)	2-19
*	34- 3
PISTON RING SET (1ST D/S)	2-19
*	34- 8
PISTON RING SET (2ND D/S)	2-19
*	34-13
PISTON RING SET (3RD D/S)	2-19
*	34-18
PISTON RING SET (4TH D/S)	2-19
*	34-23
PLATE, adjusting	4- 3
PLATE, brake shoe	23- 7
PLATE, breaker	3-16
PLATE, clutch 1	11- 6
PLATE, cover	12-20
PLATE, friction	11- 8
PLATE, license	16- 7
*	16-26

PARTS NAME INDEX

DESCRIPTION	REF. NO.
PLATE, Pressure 1	11- 9
PLATE, side 1	13- 4
PLATE, thrust 1	11- 4
PLATE, timing	3-12
PLUG	9-14
*	32-26
PLUG CAP ASSY	32-12
*	32-12
PLUG, blind	13-10
*	13-18
PLUG, oil level	9-21
PLUG, screw	6-12
PLUG, sPark (NGK B7HS)	1- 3
PLUG, straight screw	8-17
PLUNGER, starter	6-29
POINT, neutral	13- 7
PRIMARY DRIVEN GEAR COMP.	11- 2
PULLER, chain 1	24-44
*	24-45
RACE, ball 1	19- 1
*	19-11
RACE, ball 2	19-10
*	19-12
REAR ARM COMP.	18- 1
REAR FENDER COMP.	16-13
REAR FLASHER LIGHT ASSY 1	28- 6
REED VALVE ASSY	5- 1
REED, valve	5- 2
RIM (1.60-16)	23-28
*	24-29
RIM, headlight	30- 3
RING, cushion	11- 7
RING, friction	11- 3
RING, stoP	23-31
RIVET	19-18
RIVET, round head	9- 3
ROD, brake	26- 9
ROD, connecting	2- 4
*	34-27
ROD, Push 1	11-20
ROD, Push 2	11-22
SCREW	3-23
*	5-21
*	14- 4
*	33- 3
SCREW, air adjusting	6-28
SCREW, bind	4- 6

PARTS NAME INDEX

DESCRIPTION	REF. NO.
SCREW, cable adjusting	6-23
SCREW, countersunk	30- 8
SCREW, flat head	15-16
SCREW, hexagon	3-21
*	24-46
SCREW, lens fitting	28- 3
*	28- 8
*	31- 6
SCREW, lever fitting	21-15
SCREW, Pan head	3- 5
*	3-11
*	3-18
*	3-26
*	3-32
*	4-17
*	6-13
*	7-11
*	7-21
*	8- 2
*	8- 3
*	8- 4
*	8- 5
*	8- 6
*	8-14
*	9- 6
*	9- 7
*	9-10
*	9-11
*	9-16
*	9-17
*	9-20
*	11-25
*	12-21
*	13- 6
*	13-11
*	15-11
*	17- 4
*	17-16
*	18-14
*	18-16
*	31- 8
*	32-16
*	33- 5
*	33- 6
*	33- 9
*	33-12
*	33-13
SCREW, Pan head with washer	5- 4

PARTS NAME INDEX

DESCRIPTION	REF. NO.
SCREW, Push	11-28
SCREW, throttle	6-26
SEAL, Guard	18- 6
SEAL, Push rod	11-23
*	34-53
SEAT, battery	32- 2
SEAT, spring lower	20- 9
SEAT, spring upper	20-11
SHAFT, main stand	26- 2
SHAFT, Pivot	18- 4
SHAFT, worm	4-14
SHIFT CAM ASSY	13- 1
SHIFT SHAFT ASSY	14- 1
SHIM (0.3T)	4- 2
SHIM (0.5T)	4- 2
SHIM (1.0T)	4- 2
SHIM 1 (0.4T)	12-13
SHIM 1 (0.6T)	12-13
SHIM 1 (0.8T)	12-13
SHIM 1 (1.0T)	12-13
SHIM 1 (1.2T)	12-13
SHIM, camshaft	23-20
SHOCK ABSORBER ASSY, rear	18-18
SILENCER, exhaust	7- 9
*	7-19
SINGLE SEAT ASSY	22- 8
SOCKET	30- 7
SOCKET ASSY	29- 3
SPACER	11-19
*	24- 2
SPACER, bearing	23- 2
SPEEDOMETER ASSY	29- 1
*	29- 1
SPEEDOMETER CABLE ASSY	29-10
SPOKE SET, front	23-24
SPOKE SET, rear	24-25
SPRING	21-14
SPRING, air adjusting	6-27
SPRING, brush	3-10
SPRING, check ball	4- 9
SPRING, compression	10-17
*	11-10
*	25-16
*	26-12
*	19-16
SPRING, conical	19-16
SPRING, front fork	20-10
SPRING, Plunger	6-30
SPRING, reflector	30- 5

PARTS NAME INDEX

DESCRIPTION	REF. NO.
SPRING, tension	11-33
*	13-23
*	14- 2
*	23- 9
*	24-11
*	26- 4
*	26-20
SPRING, throttle stop	6-25
SPRING, throttle valve	6-19
SPRING, torsion	10- 6
*	14- 3
*	17-15
*	26- 8
SPROCKET, drive (14T)	12-25
SPROCKET, drive (15T)	12-25
SPROCKET, drive (16T)	12-25
SPROCKET, driven (34T)	24-21
SPROCKET, driven (35T)	24-21
SPROCKET, driven (36T)	24-21
SPROCKET, driven (37T)	24-21
SPROCKET, driven (38T)	24-21
STAND, main	26- 1
STAND, side	26-19
STARTER GENERATOR ASSY	3- 1
STARTER SWITCH ASSY	3-29
STATOR ASSY	3- 3
STAY, front carrier 1	22-14
STAY, front carrier 2	22-15
STAY, leg shield	27- 7
STAY, leg shield (L.H)	27- 5
*	27-19
STAY, leg shield (R.H)	27- 6
*	27-20
STAY, muffler 1	7-12
STAY, muffler 2	7-17
*	7-22
STAY, Plate fitting 1	16- 8
STEERING LOCK ASSY	19-15
STOP SWITCH ASSY	32-19
STOPPER	10-10
STOPPER LEVER ASSY	13-21
STOPPER, cable	6-18
STOPPER, main stand	26- 5
STOPPER, reed valve	5- 3
SUB CARRIER ASSY	22- 7
*	22-18
TAILLIGHT UNIT ASSY	31- 1
TANDEM SEAT ASSY	22-11
TIRE (3.00-16)	23-25

PARTS NAME INDEX

DESCRIPTION	REF. NO.
TIRE (3.00-16)	24-26
TOOL KIT	15-17
TOP, mixing chamber	6-21
TUBE (3.00-16)	23-26
*	24-27
TUBE, inner 1	20- 4
TUBE, outer 1	20- 2
TUBE, outer 2	20- 3
TUBE, throttle guide	25-11
UNDER BRACKET COMP.	20-19
VALVE, throttle 1	6-15
VOLTAGE REGULATOR ASSY	3-25
WASHER	2- 6
*	3-28
*	3-34
*	10-13
*	10-13
*	10-13
*	10-18
*	15- 9
*	19- 6
*	24-23
*	27-12
*	29- 6
*	34-30
WASHER, caP	20-17
WASHER, conical sPring	11-13
*	11-17
*	19-19
WASHER, lock	12-28
*	14- 6
WASHER, needle valve	6- 6
WASHER, Plain	3- 7
*	5-22
*	16-20
WASHER, Plate	1-10
*	4-15
*	5-12
*	5-23
*	11-18
*	11-27
*	12- 4
*	12- 8
*	13- 9
*	14- 8
*	15-13
*	16- 6
*	16-11

PARTS NAME INDEX

DESCRIPTION	REF. NO.
WASHER, Plate	16-16
*	16-19
*	16-23
*	17- 3
*	18- 9
*	18-19
*	22- 5
*	22- 6
*	23-15
*	23-16
*	25- 8
*	26-11
*	27-10
*	27-11
WASHER, sPring	3- 6
*	3-19
*	3-22
*	3-24
*	3-27
*	3-30
*	3-33
*	4- 5
*	5- 8
*	5-13
*	5-27
*	6-14
*	7- 4
*	7-10
*	7-13
*	7-16
*	7-20
*	7-23
*	7-26
*	11-26
*	13- 5
*	15- 7
*	15- 8
*	15-12
*	16- 3
*	16-12
*	16-15
*	16-18
*	16-25
*	17-17
*	18-15
*	18-17
*	19- 5
*	22- 4

PARTS NAME INDEX

DESCRIPTION	REF. NO.
WASHER, sPring	22-13
*	22-17
*	24-35
*	26-18
*	27-14
*	27-17
*	27-23
*	28-11
*	29- 9
*	31- 9
*	32-13
*	32-17
*	32-25
WIRE HARNESS ASSY	32-20
WIRE, minus lead	32- 6
WIRE, Plus lead	32- 4