

# YAMAHA

## PARTS CATALOGUE

### XT600ZL (53R)

1453R-700E1

# CONTENTS

## ENGINE

Cylinder Head .....	B2 ~ B3
Cylinder .....	B4
Crankshaft · Piston .....	B5 ~ B6
Valve .....	B7
Camshaft · Chain .....	B8
Oil Pump .....	B9 ~ B10
Intake .....	B11
Carburetor .....	B12 ~ B13
Exhaust .....	B14
Crankcase .....	B15
Crankcase Cover 1 .....	C2 ~ C3
Starter .....	C4 ~ C5
Clutch .....	C6 ~ C7
Transmission .....	C8 ~ C9
Shift Cam · Fork .....	C10
Shift Shaft .....	C11

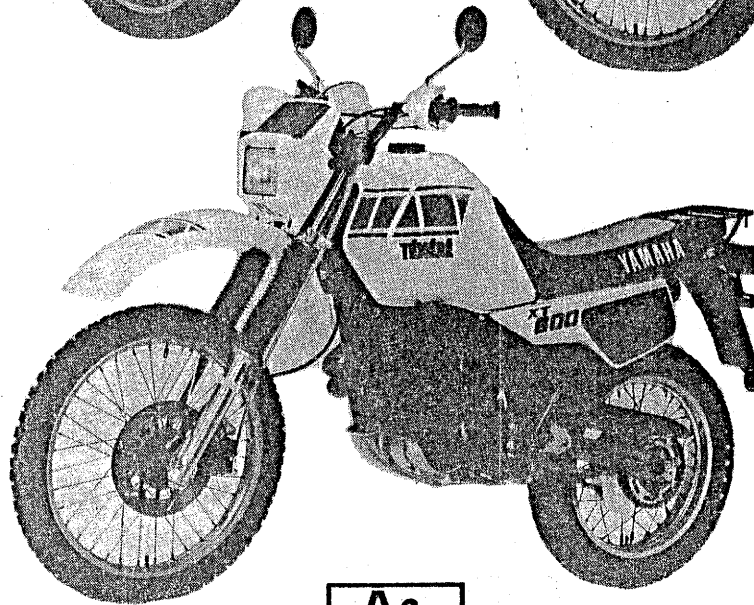
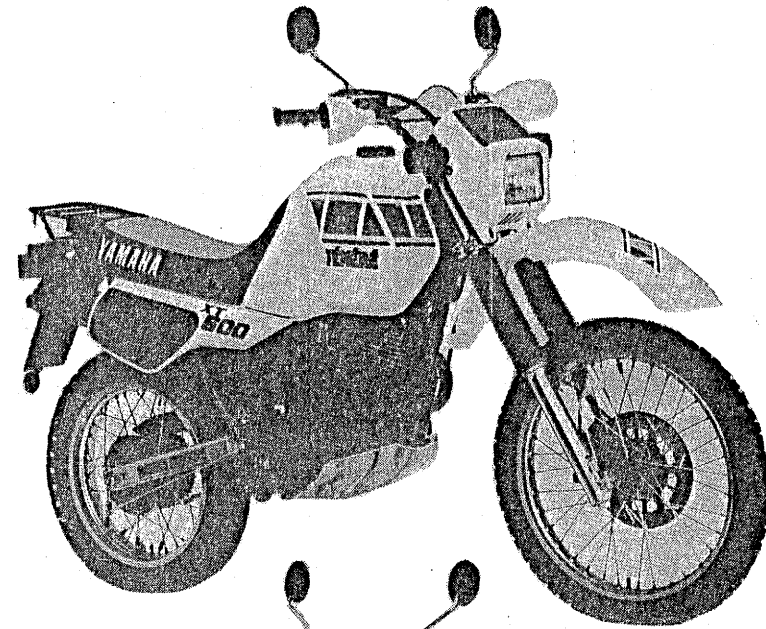
## CHASSIS

Frame .....	C12 ~ C13
Fender .....	C14
Side Cover .....	C15
Rear Arm .....	D2 ~ D3
Rear Suspension .....	D4
Steering .....	D5
Front Fork .....	D6 ~ D8
Fuel Tank .....	D9
Seat .....	D10
Front Wheel .....	D11 ~ D12

Rear Wheel .....	D13 ~ D14
Steering Handle · Cable .....	D15 ~ E2
Stand · Footrest .....	E3 ~ E4
Cowling 1 .....	E5
Generator .....	E6
Flasher Light .....	E7
Meter .....	E8
Headlight .....	E9
Taillight .....	E10
Handle Switch · Lever .....	E11
Electrical 1 .....	E12
Electrical 2 .....	E13

## INDEX

NUMERICAL INDEX .....	L1 ~ L4
PARTS NAME INDEX .....	M1 ~ M6



A3

# FOREWORD

This Parts Catalogue is related to the parts in use for the Yamaha XT600ZL(53R).

When you are ordering replacement parts for the XT600ZL(53R), refer to this Parts Catalogue and quote both part numbers and part names correctly.

1. Modifications or additions which have been made after issue of the Parts Catalogue will be announced in the Yamaha Parts News.

It is advisable that according to the Yamaha Parts News you make necessary corrections to the Parts Catalogue on hand to keep it up-to-date.

2. Abbreviations

The following abbreviations are used in this Parts Catalogue.

- U.R. Use size (thickness) and/or number as required.
- U.N. Use as many as you need.
- A.P. Alternate Parts
- L.M. Local Made
- F# Frame No. (Applicable machine No.)

3. The parts marked with ( \* ) in the parts number column of this Catalogue are not supplied with by Yamaha, those have to be found locally.

4. Parts, which are to be supplied in the form of assemblies, are listed with an indentation of one letter's space, and a dot ( . ) is put against the name of each part.

**EXAMPLE** CARBURETOR ASS'Y  
 . JET, pilot  
 . NOZZLE, main

5. Indication of No. of constituent parts for assembly

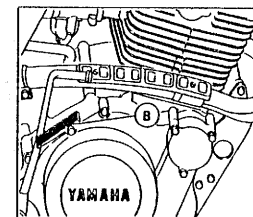
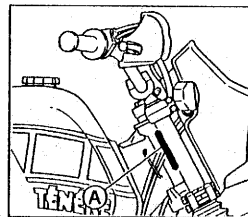
The numeral appearing to the right of each constituent part under the description indicates the quantity of such parts for each individual assembly unit.

**EXAMPLE**

Part No.	Description	Q'ty	Remarks
2F5-83310-60	FRONT FLASHER LIGHT ASS'Y	2	
115-83311-60	. BULB (6V-18W)	1	
1M1-83309-60	. REFLECTOR	1	

6. Initial Serial No. and Color Code

(A) Frame Serial No.	39E-004101 and following
(B) Engine Serial No.	39E-004101 and following



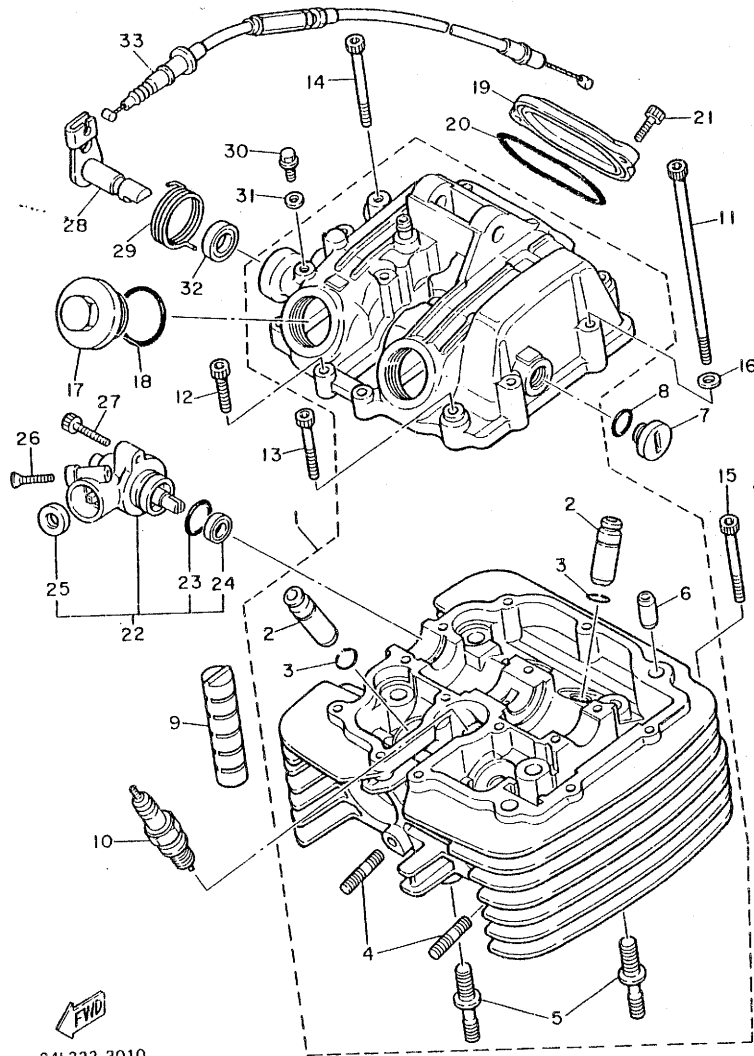
Color Code	Color Name	Abbreviate
36	CLEAN WHITE	W

7. Applicable colors of graphics are represented in the "Remarks" column by the letter(s) appropriately picked out of the full word(s) showing such colors.

**EXAMPLE**

Part No.	Description	Q'ty	Remarks
2N4-24110-00-X5	FUEL TANK COMP.	1	MAXIM RED
3J1-24240-10	. GRAPHIC, fuel tank set	1	for MXR

FIG. 1 CYLINDER HEAD

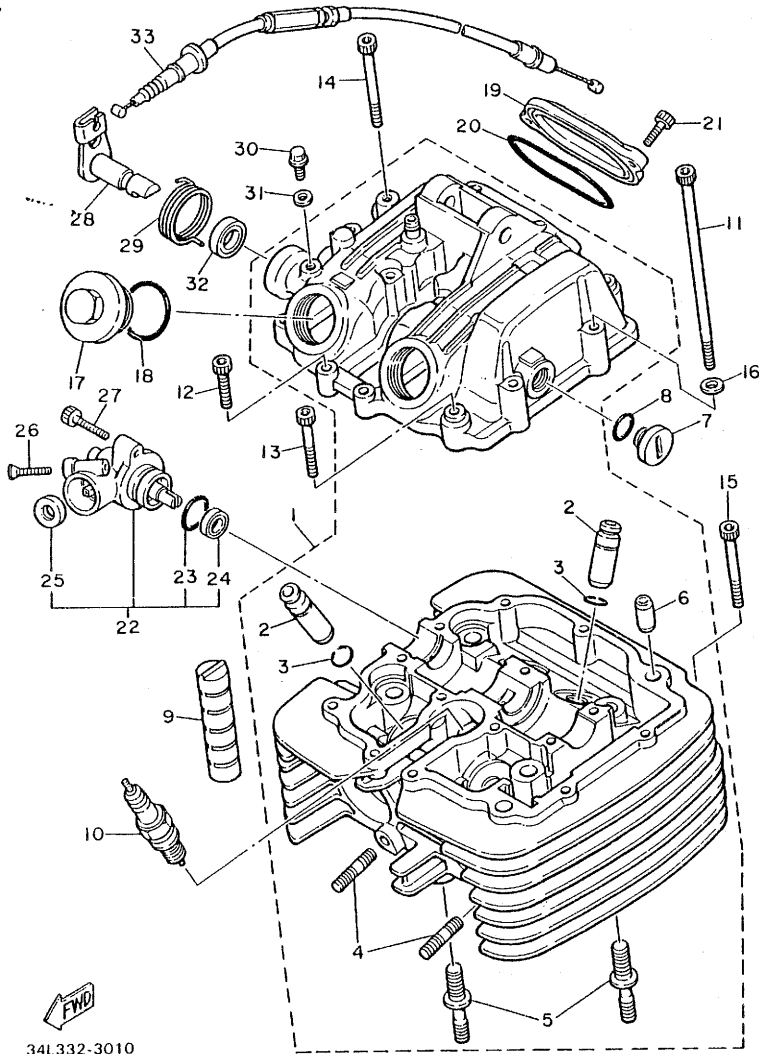


34L332-3010

REF. NO.	PART NO.	DESCRIPTION	Q'TY	REMARKS
1	34L-11101-00	CYLINDER HEAD ASSY	1	
2	4H7-11133-10	.GUIDE, intake valve (1ST O/S)	4	
3	93440-12052	.CIRCLIP	4	
4	95611-06620	.BOLT, stud	4	
5	90116-10378	.BOLT, stud	2	
6	91810-03014	.PIN, dowel	2	
7	90340-14079	PLUG, straight screw	1	
8	93210-14369	O-RING	1	
9	583-11127-00	ABSORBER 3	2	
10	94701-00262	PLUG, sPark (NGK DPR7EA 9)	1	UR for S.AFRICA
	94701-00263	PLUG, sPark (NGK DP7EA 9)	1	UR for OCEANIA
11	91316-06125	BOLT	2	
12	91316-06025	BOLT	4	
13	91316-06040	BOLT	3	
14	91316-06055	BOLT	7	
15	91316-06050	BOLT	1	
16	92906-06600	WASHER, Plate	2	
17	1H2-11186-00	PLUG, viewer	2	
18	93210-32172	O-RING	2	
19	5Y1-11187-00	COVER, cylinder head side 3	1	
20	93210-62523	O-RING	1	
21	91316-06018	BOLT	2	
22	5Y1-17800-00	GEAR UNIT ASSY, tacho. drive	1	
23	93210-19522	.O-RING	1	
24	93102-11262	.OIL SEAL	1	
25	93102-07261	.OIL SEAL	1	
26	92706-06030	SCREW, flat head	1	
27	91316-06025	BOLT	1	

FIG. 1 CYLINDER HEAD

REF. NO.	PART NO.	DESCRIPTION	Q'TY	REMARKS
28	34K-12288-00	CAM, decompression	1	
29	90508-18551	SPRING, torsion	1	
30	90109-06418	BOLT	1	
31	90430-06014	GASKET	1	
32	93102-12106	OIL SEAL	1	
33	34L-12292-00	CABLE, decompression	1	




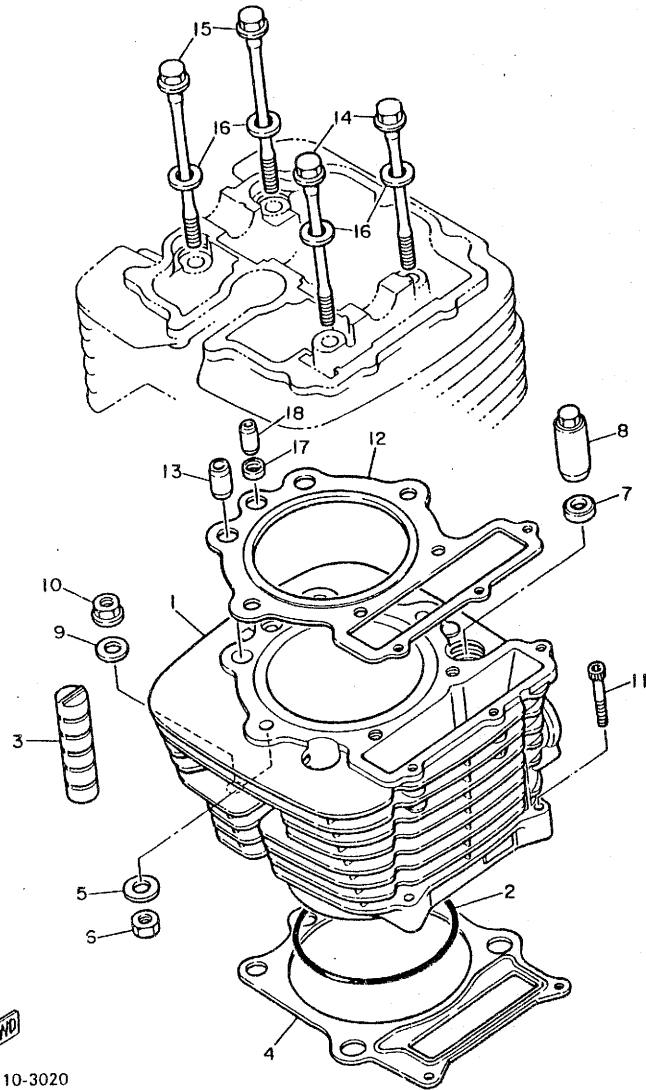
 34L332-3010

FIG. 2 CYLINDER



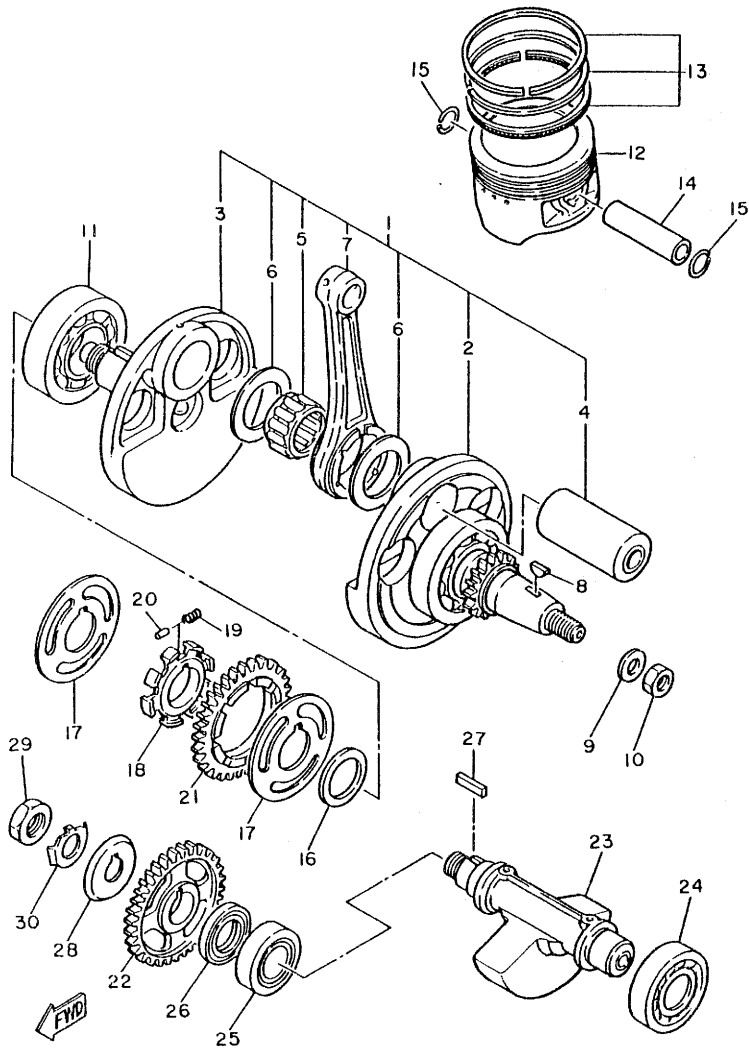
REF. NO.	PART NO.	DESCRIPTION	Q'TY	REMARKS
1	34L-11310-00	CYLINDER	1	
2	93210-98473	D-RING	1	
3	583-11127-00	ABSORBER 3	2	
4	34K-11351-00	GASKET, cylinder	1	
5	90201-08760	WASHER, Plate	2	
6	90176-08026	NUT, crown	2	
7	90201-10590	WASHER, Plate	2	
8	90179-10201	NUT	2	
9	90201-10124	WASHER, Plate	2	
10	90179-10279	NUT	2	
11	91316-06030	BOLT	2	
12	34K-11181-00	GASKET, cylinder head 1	1	
13	91810-05018	PIN, dowel	2	
14	90105-08213	BOLT, washer based	2	
15	90105-08214	BOLT, washer based	2	
16	90201-08609	WASHER, Plate	4	
17	90430-08178	GASKET	1	
18	91810-18016	PIN, dowel	1	

FRONT

5Y1110-3020

B4

FIG. 3 CRANKSHAFT. PISTON

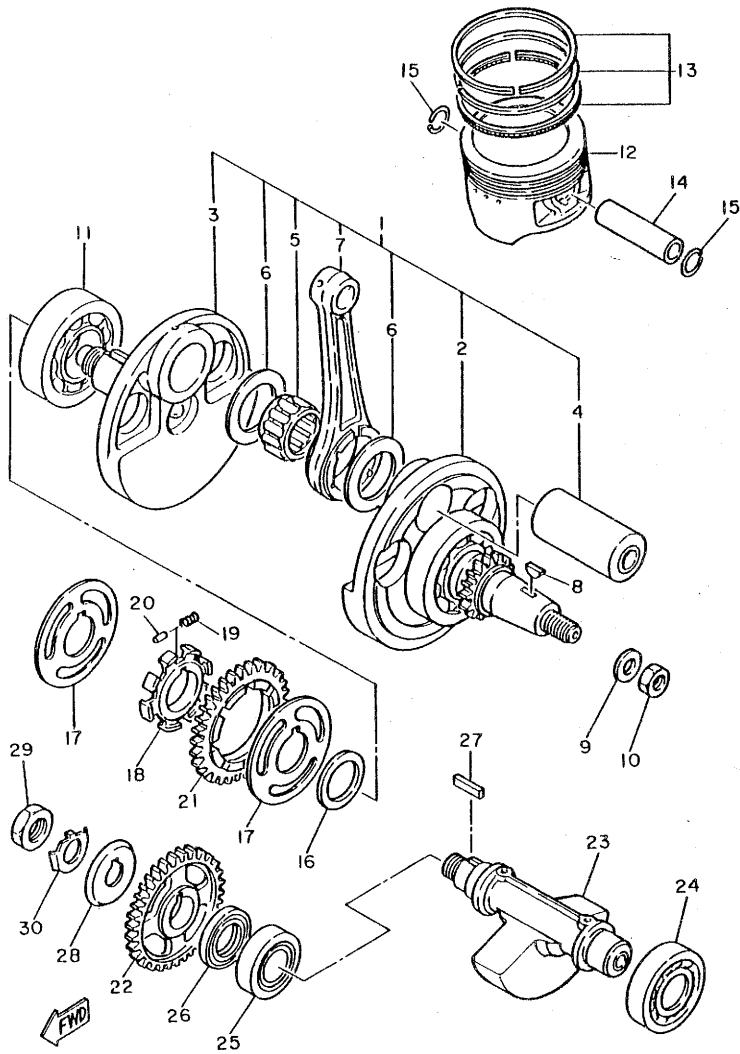


43F300-4030

REF. NO.	PART NO.	DESCRIPTION	Q'TY	REMARKS
1	34K-11400-00	CRANKSHAFT ASSY	1	
2	34K-W1141-00	•CRANK 1	1	
3	34K-11422-00	•CRANK 2	1	
4	34K-11681-00	•PIN, crank 1	1	
5	93310-634K2	•BEARING, cylindrical	1	
6	90209-34254	•WASHER	2	
7	34K-11651-00	•ROD, connecting	1	
8	90280-05013	KEY, woodruff	1	
9	90201-14226	WASHER, Plate	1	
10	90179-14317	NUT	1	
11	93306-30702	BEARING (B6307)	1	
12	34L-11631-00-Y0	PISTON (STD)	1	
	34L-11636-00	PISTON (0.50MM O/S)	1	AP
	34L-11638-00	PISTON (1.00MM O/S)	1	AP
13	34L-11610-00	PISTON RING SET (STD)	1	
	34L-11610-20	PISTON RING SET (2ND O/S)	1	AP
	34L-11610-40	PISTON RING SET (4TH O/S)	1	UR
14	34K-11633-00	PIN, Piston	1	
15	93450-24028	CIRCLIP	2	
16	90201-301F4	WASHER, Plate	1	
17	34K-11565-01	WASHER, bearing cover	2	
18	5Y1-11496-01	BOSS, buffer	1	
19	90501-22721	SPRING, compression	8	
20	93605-10090	PIN, dowel	4	
21	34K-11536-00	GEAR, drive(44T)	1	
22	34K-11531-00	GEAR, balance wt(44T)	1	
23	34K-11454-00	WEIGHT 1	1	
24	93306-30525	BEARING (B6305)	1	

**B5**

FIG. 3 CRANKSHAFT. PISTON



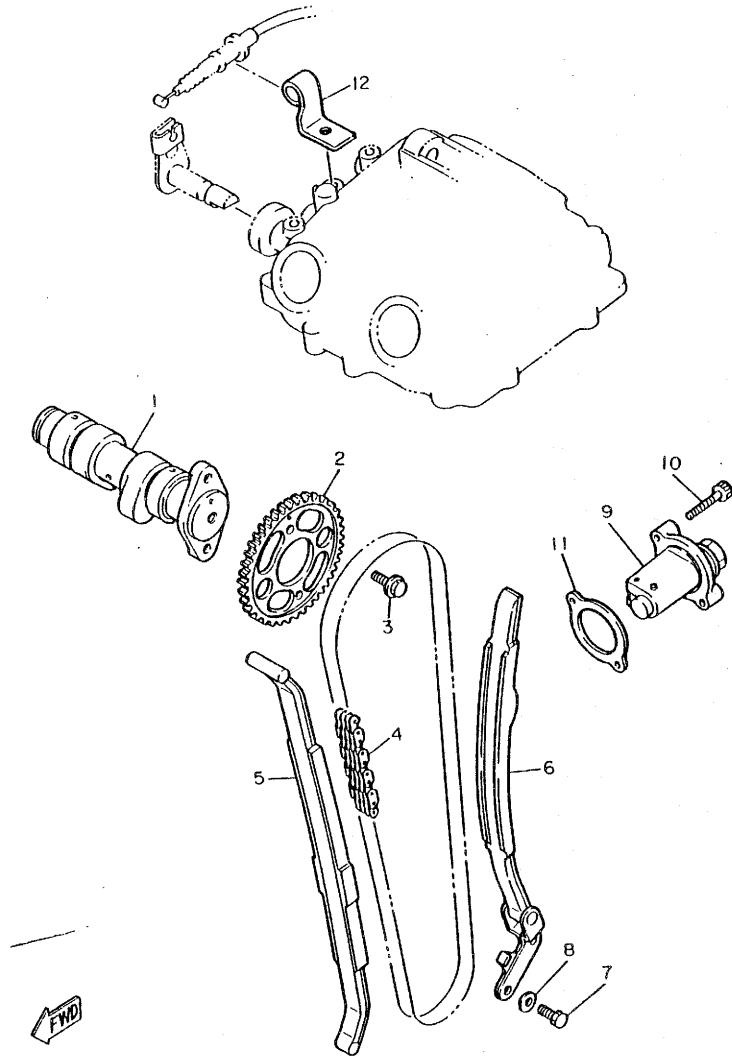
43F300-4030

REF. NO.	PART NO.	DESCRIPTION	Q'TY	REMARKS
25	93306-30541	BEARING	1	
26	93101-25106	OIL SEAL	1	
27	90282-05013	KEY, straight	1	
28	34K-11145-00	PLATE, breather 2	1	
29	90170-16326	NUT	1	
30	90215-16230	WASHER, lock	1	

B6



FIG. 5 CAMSHAFT. CHAIN

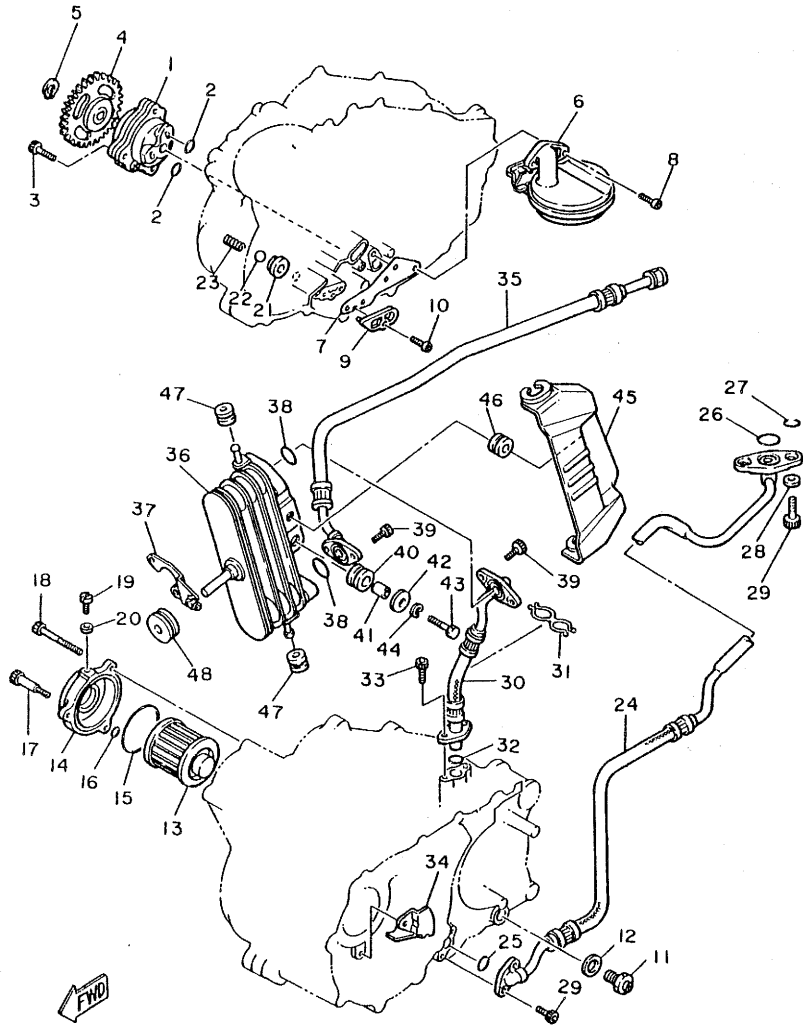


43F300-4050

REF. NO.	PART NO.	DESCRIPTION	Q'TY	REMARKS
1	43F-12170-00	CAMSHAFT ASSY 1	1	
2	34K-12176-00	SPROCKET, cam chain	1	
3	90105-07087	BOLT, washer based	2	
4	94590-27126	CHAIN	1	
5	34K-12231-00	GUIDE, stopPer 1	1	
6	34K-12241-00	GUIDE, stopPer 2	1	
7	97321-06016	BOLT	2	
8	90201-061A5	WASHER, Plate	2	
9	34K-12210-00	TENSIONER ASSY, cam chain	1	
10	91316-06025	BOLT	2	
11	4X7-12213-00	GASKET, tensioner case	1	
12	34K-12283-00	BRACKET, decomPression	1	

**B8**

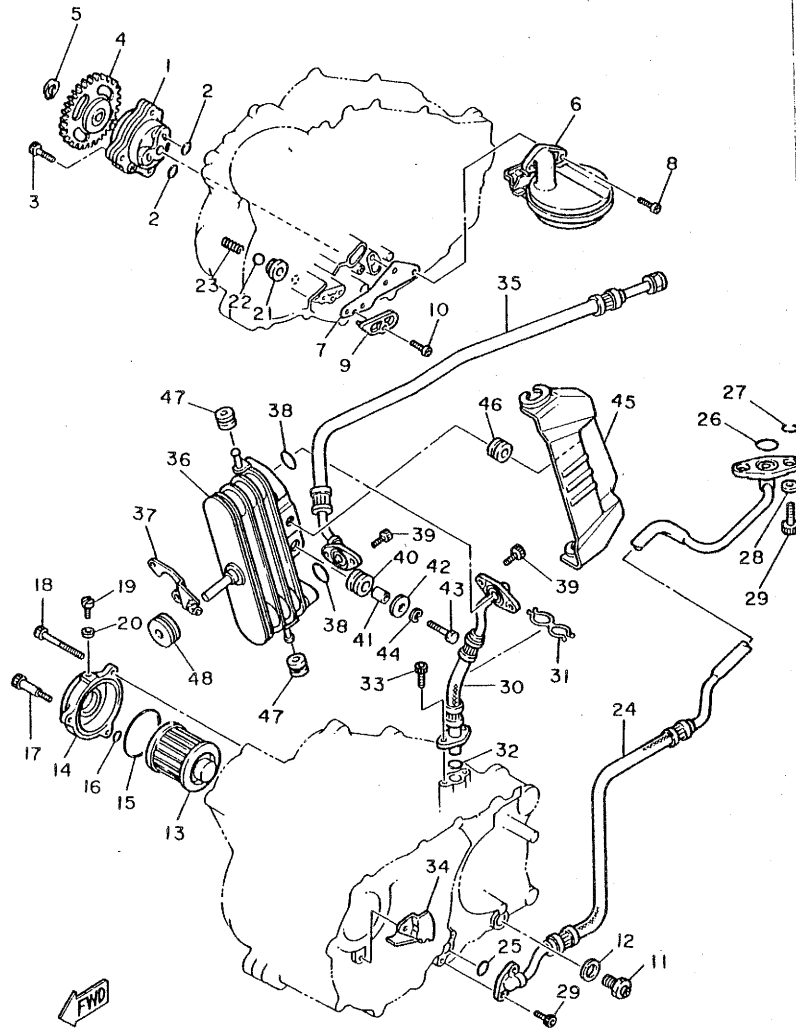
FIG. 6 OIL PUMP



50T300-4060

REF. NO.	PART NO.	DESCRIPTION	Q'TY	REMARKS
1	5Y1-13300-00	OIL PUMP ASSY	1	
2	93210-13361	O-RING	2	
3	91316-06035	BOLT	3	
4	5Y1-13325-00	GEAR, Pump driven	1	
5	93410-11002	CIRCLIP	1	
6	5Y1-W1343-00	STRAINER COMP.	1	
7	5Y1-13415-01	SEAL, oil strainer	1	
8	92501-06014	SCREW, Pan head	2	
9	5Y1-15427-00	COVER, cap 2	1	
10	92501-06014	SCREW, Pan head	1	
11	11H-13455-00	PLUG	1	
12	214-11198-01	GASKET	1	
13	4X7-13440-90	ELEMENT ASSY, oil cleaner	1	
14	583-13447-00	COVER, oil element	1	
15	93210-64297	O-RING	1	
16	93210-07135	O-RING	1	
17	90109-06419	BOLT	1	
18	91316-06080	BOLT	2	
19	90149-05110	SCREW	1	
20	90430-05126	GASKET	1	
21	583-13113-00	SEAT, check ball	1	
22	93503-08007	BALL	1	
23	90501-05378	SPRING, compression	1	
24	34L-13464-01	HOSE, oil 1	1	
25	93210-10197	O-RING	1	
26	93210-22298	O-RING	1	
27	93210-09350	O-RING	2	
28	90430-06166	GASKET	2	

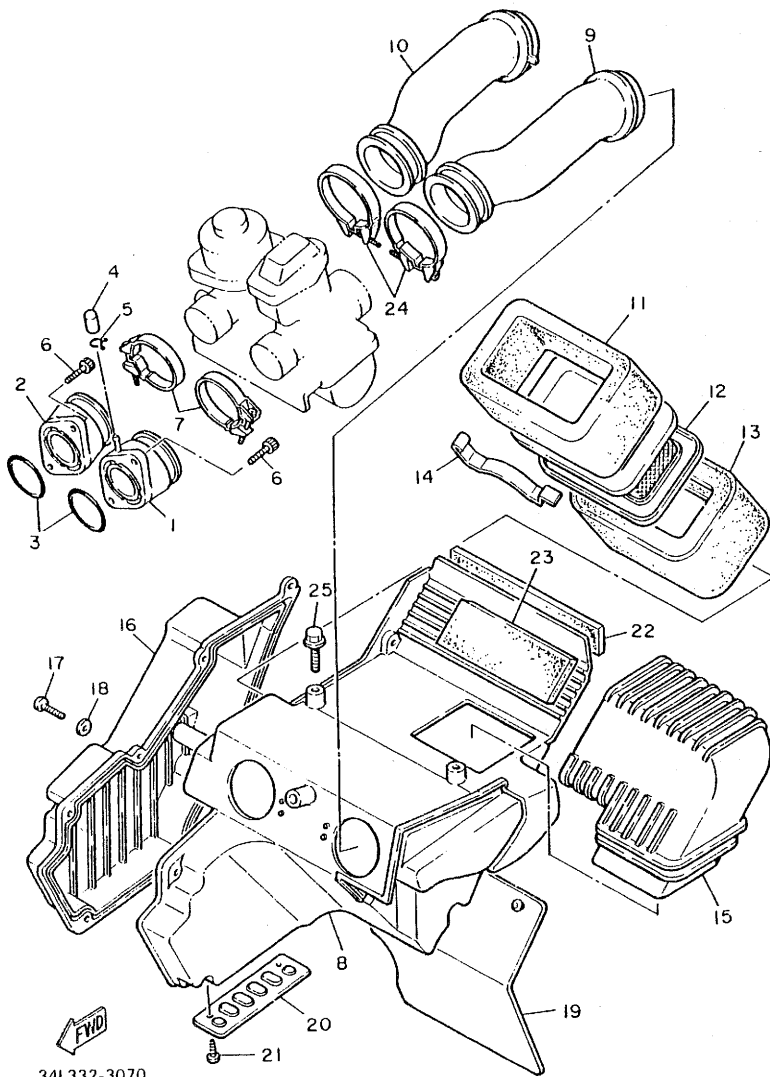
FIG. 6 OIL PUMP



50T300-4060

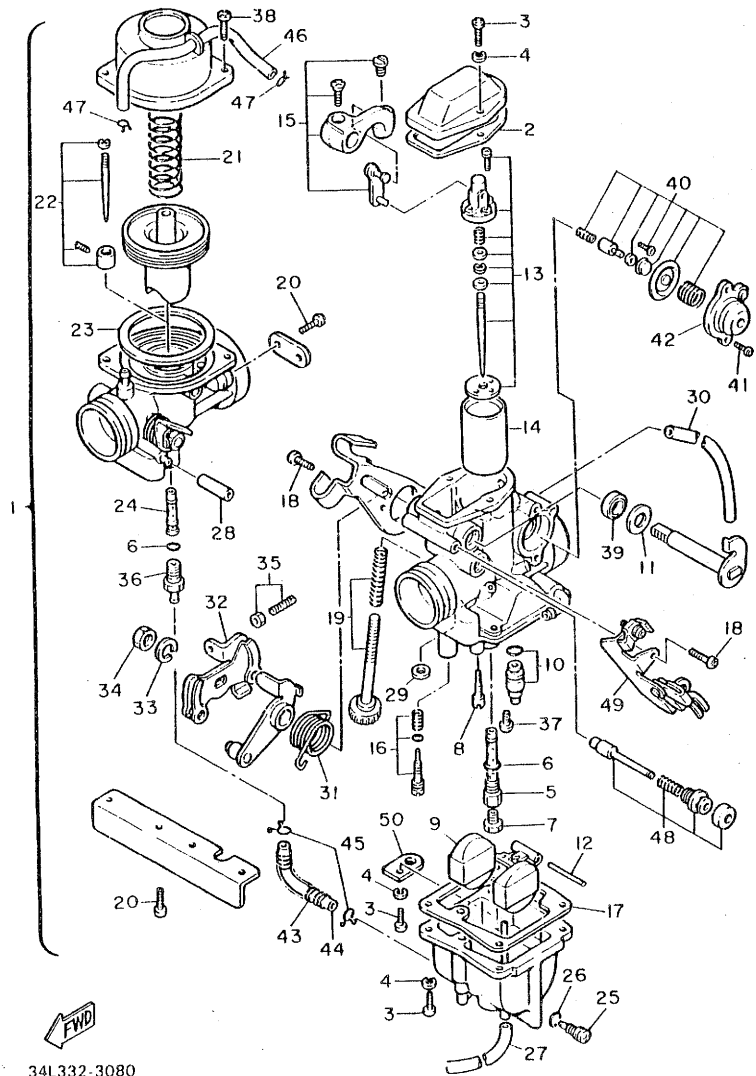
REF. NO.	PART NO.	DESCRIPTION	Q'TY	REMARKS
29	91316-06016	BOLT	4	
30	34L-13465-01	HOSE, oil 2	1	
31	90464-20064	CLAMP	1	
32	93210-15171	O-RING	1	
33	91316-06016	BOLT	2	
34	5Y1-13371-00	PLATE	1	
35	34L-13466-01	HOSE, oil cooler	1	
36	34L-13470-00	OIL COOLER ASSY	1	
37	34L-13472-01	HOLDER, oil cooler 1	1	
38	93210-14579	O-RING	2	
39	91316-06012	BOLT	4	
40	90480-15235	GROMMET	2	
41	90387-060A7	COLLAR	2	
42	90209-06174	WASHER	2	
43	97306-06020	BOLT	2	
44	92906-06100	WASHER, sPring	2	
45	34L-13443-00	COVER, oil cooler	1	
46	90480-13197	GROMMET	1	
47	90480-12053	GROMMET	2	
48	90480-16233	GRDMMET	1	

FIG. 7 INTAKE



REF. NO.	PART NO.	DESCRIPTION	Q'TY	REMARKS
1	34K-13586-00	JOINT, carburetor 1	1	
2	34K-13596-00	JOINT, carburetor 2	1	
3	93210-36549	O-RING	2	
4	16G-13569-00	PLUG, blind	1	
5	90467-10039	CLIP	1	
6	91316-06020	BOLT	4	
7	90460-46206	CLAMP, hose	2	
8	34L-14401-00	AIR CLEANER CASE ASSY	1	
9	34K-14453-00	JOINT, air cleaner 1	1	
10	34K-14454-00	JOINT	1	
11	34L-14451-00	ELEMENT, air cleaner	1	
12	34L-14458-00	GUIDE	1	
13	34L-14461-00	ELEMENT, air cleaner 2	1	
14	2J2-14468-00	PLATE, element fitting	1	
15	34L-14437-00	DUCT	1	
16	34L-14412-00	CAP, cleaner case 1	1	
17	98506-05016	SCREW, Pan head	6	
18	92906-05600	WASHER, Plate	6	
19	34L-21621-00	FLAP	1	
20	34L-1442F-00	PROTECTOR	1	
21	97706-40506	SCREW, tapping	2	
22	34L-14426-00	DAMPER 2	1	
23	34L-14425-00	DAMPER 1	1	
24	90460-51059	CLAMP, hose	2	
25	95801-06012	BOLT, flange	3	

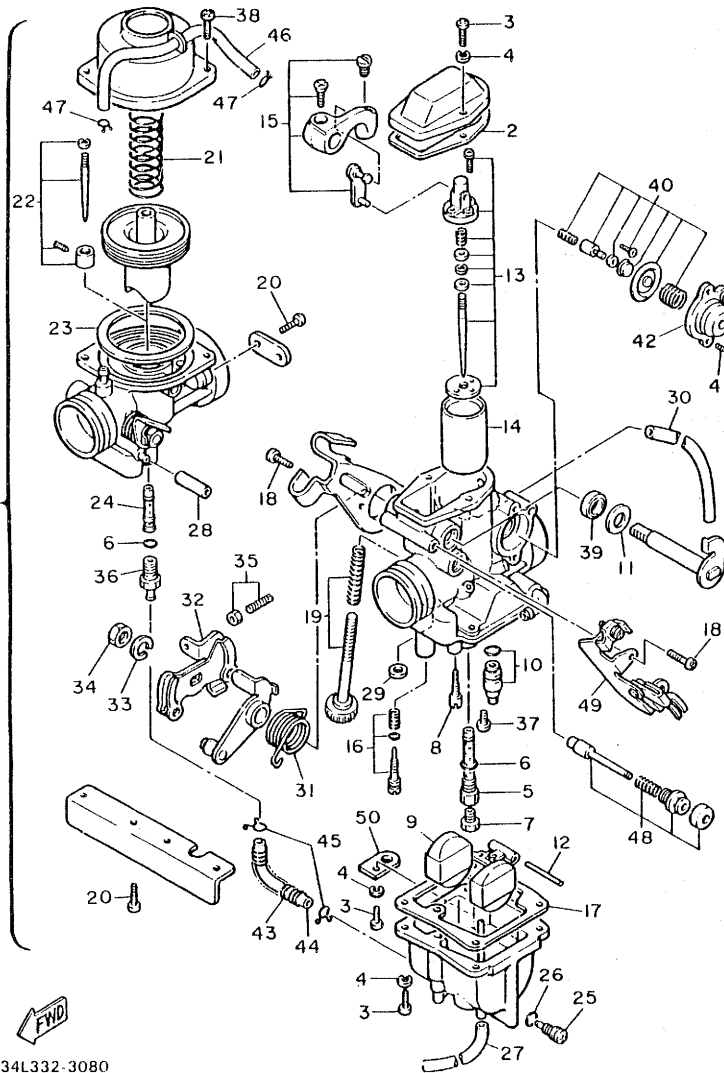
FIG. 8 CARBURETOR



34L332-3080

REF. NO.	PART NO.	DESCRIPTION	Q'TY	REMARKS
1	34L-14301-00	CARBURETOR ASSY 1	1	
2	5Y1-14198-00	•GASKET	1	
3	98501-04014	•SCREW, Pan head	6	
4	92901-04100	•WASHER, sPrInG	6	
5	5Y3-14341-00	•NOZZLE, main	1	
6	360-24512-00	•GASKET	2	
7	288-14343-63	•JET, main (#126)	1	
8	5H0-14342-24	•JET, Pilot (# 48)	1	
9	5Y1-14385-00	•FLOAT	1	
10	5Y1-14107-00	•NEEDLE VALVE SET	1	
11	5Y1-14357-00	•WASHER, Plain	1	
12	689-14386-00	•PIN, float	1	
13	34L-1490J-10	•NEEDLE SET	1	
14	5Y1-14312-45	•VALVE, throttle 1	1	
15	5Y1-14203-00	•CABLE CONNECTOR SET	1	
16	5Y3-14105-00	•PILOT SCREW SET	1	
17	5Y1-14384-00	•GASKET, float chamber	1	
18	5Y1-14325-00	•SCREW, Pan head	3	
19	34K-14103-00	•THROTTLE SCREW SET	1	
20	98501-05010	•SCREW, Pan head	6	
21	5Y1-14286-00	•SPRING	1	
22	5Y3-1490J-01	•NEEDLE SET	1	
23	5Y1-14398-00	•GASKET	1	
24	5Y1-14355-00	•NOZZLE, main 2	1	
25	5Y1-14115-00	•PLUG, screw	1	
26	5Y1-14397-00	•O-RING	1	
27	5Y1-14396-00	•PIPE	1	
28	5Y1-14349-00	•PIPE	1	

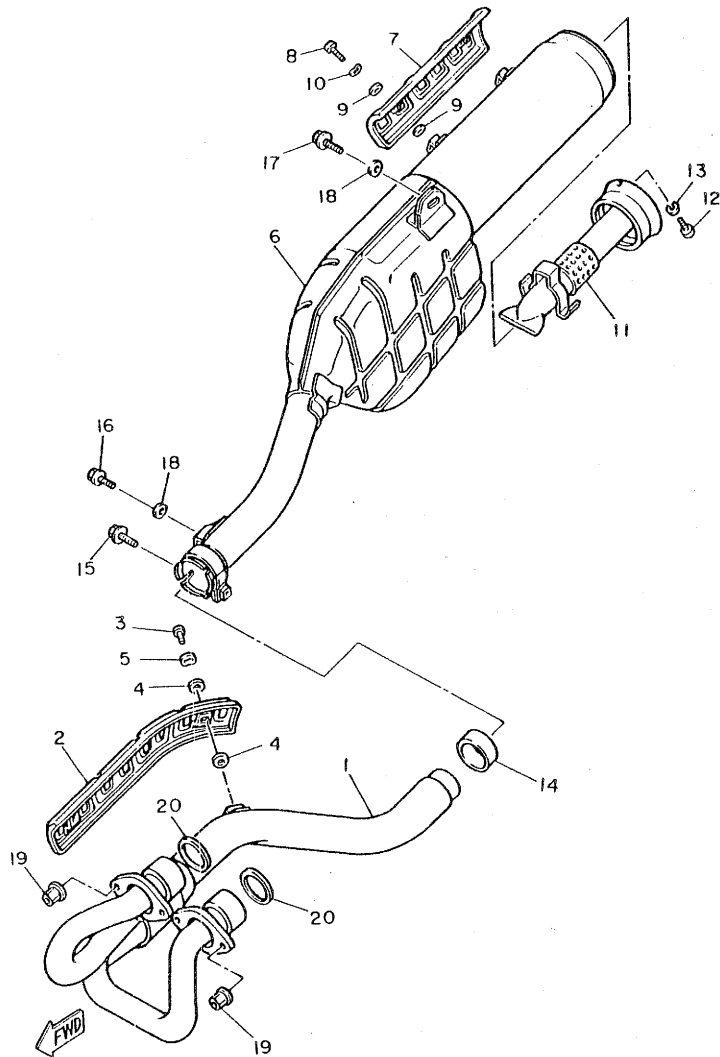
FIG. 8 CARBURETOR



34L332-3080

REF. NO.	PART NO.	DESCRIPTION	Q'TY	REMARKS
29	5Y1-14536-00	.GASKET	1	
30	34K-14197-00	.PIPE	1	
31	5Y1-14131-00	.SPRING, throttle valve	1	
32	34K-14305-00	.THROTTLE LEVER COMP	1	
33	5Y1-14356-00	.WASHER, sPring	1	
34	5Y1-14358-00	.NUT	1	
35	34K-1490K-00	.STOP SCREW SET	1	
36	5Y1-14343-63	.JET, main (#126)	1	
37	98901-04006	.SCREW, bind	1	
38	5Y1-14216-00	.SCREW	2	
39	5Y1-14572-00	.SEAL	2	
40	5Y1-1490A-00	.DIAPHRAGM SET, 1	1	
41	98503-04010	.SCREW, Pan head	2	
42	5Y1-14293-00	.COVER 1	1	
43	5Y1-14556-00	.SPRING	1	
44	5Y1-14148-00	.PIPE	1	
45	5Y1-14137-00	.CLIP	2	
46	5Y1-14149-00	.PIPE	1	
47	5Y1-14159-00	.CLIP	2	
48	5Y1-1410A-00	.STARTER SET	1	
49	34L-14905-00	.LEVER, starter	1	
50	5Y1-14146-00	.PLATE	1	

FIG. 9 EXHAUST

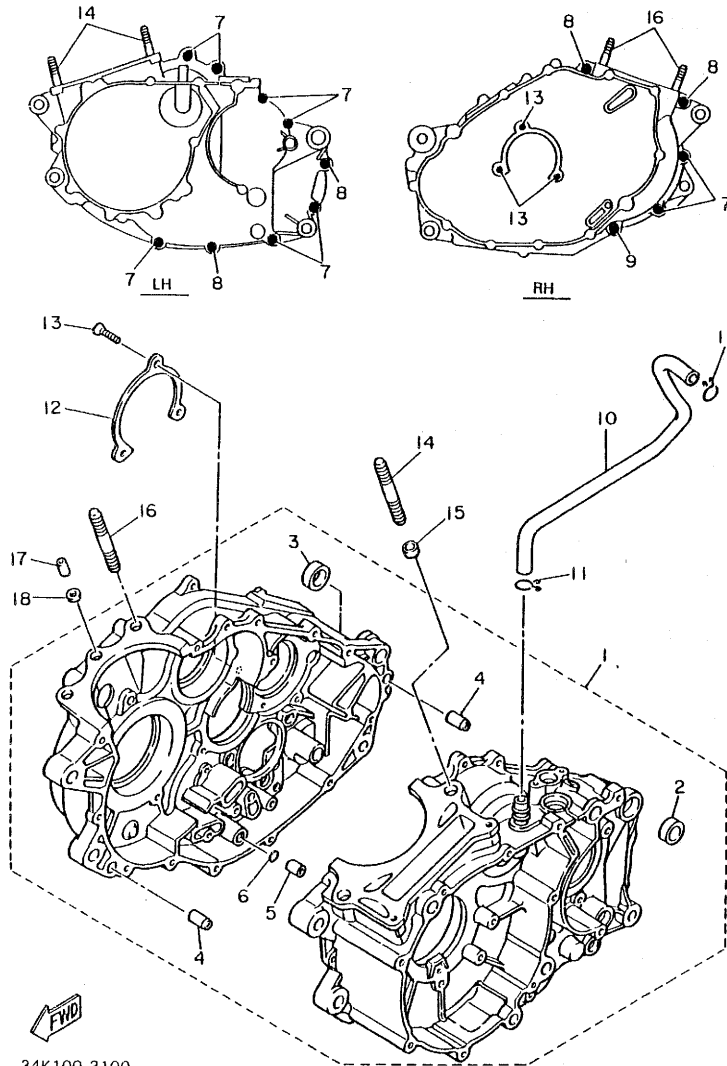


34L351-3090

REF. NO.	PART NO.	DESCRIPTION	Q'TY	REMARKS
1	34K-14611-00	PIPE, exhaust 1	1	
2	34K-14628-00	PROTECTOR, exhaust Pipe	1	
3	90164-06017	SCREW, tapping	2	
4	30X-14766-00	WASHER, Protector	4	
5	90206-06060	WASHER, wave	2	
6	34L-14711-00	MUFFLER 1	1	
7	34L-14728-00	PROTECTOR, muffler 2	1	
8	98906-06010	SCREW, bind	2	
9	583-14766-00	WASHER, Protector	4	
10	90206-06060	WASHER, wave	2	
11	34L-14752-00	PIPE, outlet	1	
12	92501-06008	SCREW, Pan head	1	
13	92901-06100	WASHER, spring	1	
14	34K-14714-00	GASKET, muffler	1	
15	95816-08045	BOLT, flange	1	
16	95811-08012	BOLT, flange	1	
17	95821-08020	BOLT, flange	1	
18	90201-08326	WASHER, Plate	2	
19	90179-06306	NUT	4	
20	5Y1-14613-00	GASKET, exhaust Pipe	2	

**B14**

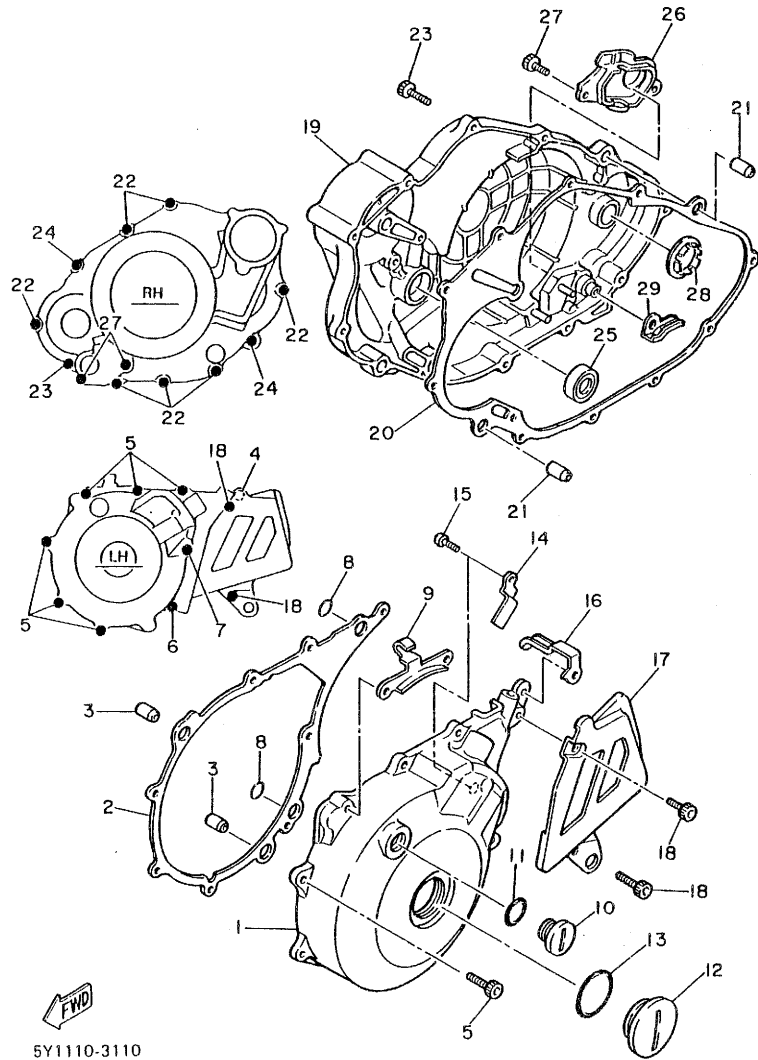
FIG. 10 CRANKCASE



REF. NO.	PART NO.	DESCRIPTION	Q'TY	REMARKS
1	34L-15100-00	CRANKCASE ASSY	1	
2	90387-17783	.COLLAR	1	
3	90387-16782	.COLLAR	1	
4	91830-22016	.PIN, dowel	2	
5	91810-18016	.PIN, dowel	1	
6	93210-07135	.O-RING	1	
7	91316-06030	BOLT	9	
8	91316-06045	BOLT	4	
9	91316-06060	BOLT	1	
10	34L-11166-00	PIPE, breather 1	1	
11	90467-14015	CLIP	2	
12	5Y1-15383-00	PLATE, bearing cover	1	
13	92701-06012	SCREW, flat head	3	
14	90116-10087	BOLT, stud	2	
15	91830-24016	PIN, dowel	2	
16	90116-10263	BOLT, stud	2	
17	91810-18016	PIN, dowel	1	
18	90430-08178	GASKET	1	

34K100-3100

FIG. 11 CRANKCASE COVER 1

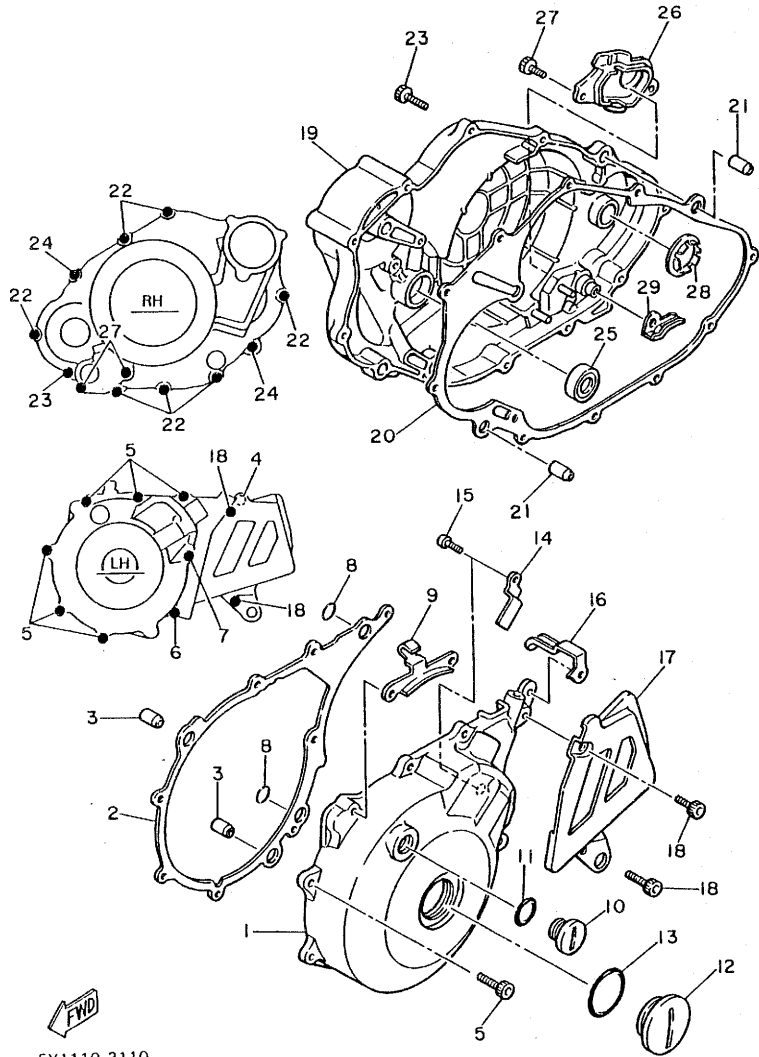


5Y1110-3110

REF. NO.	PART NO.	DESCRIPTION	Q'TY	REMARKS
1	34K-15411-00	COVER, crankcase 1	1	
2	5Y1-15451-01	GASKET, crankcase cover 1	1	
3	91830-22016	PIN, dowel	2	
4	91316-06020	BOLT	1	
5	91316-06025	BOLT	6	
6	91316-06040	BOLT	1	
7	91316-06050	BOLT	1	
8	93210-13361	O-RING	2	
9	5Y1-15441-00	HOLDER, clutch cable	1	
10	90340-14079	PLUG, straight screw	1	
11	93210-14369	O-RING	1	
12	90340-36078	PLUG, straight screw	1	
13	93210-36510	O-RING	1	
14	90462-16102	CLAMP	1	
15	92501-06012	SCREW, Pan head	1	
16	90462-10107	CLAMP	1	
17	5Y1-15421-01	COVER, crankcase 2	1	
18	91316-06016	BOLT	2	
19	5Y1-15431-00	COVER, crankcase 3	1	
20	34K-15462-00	GASKET, crankcase cover 3	1	
21	<del>91830-22016</del> 99510-13016	PIN, dowel	2	
22	91316-06025	BOLT	7	
23	91316-06030	BOLT	1	
24	91316-06035	BOLT	2	
25	93101-14092	OIL SEAL	1	
26	5Y1-15417-00	COVER, cap	1	
27	91316-06016	BOLT	2	
28	5Y1-15645-00	SHIM, kick shaft	1	

FIG. 11 CRANKCASE COVER 1

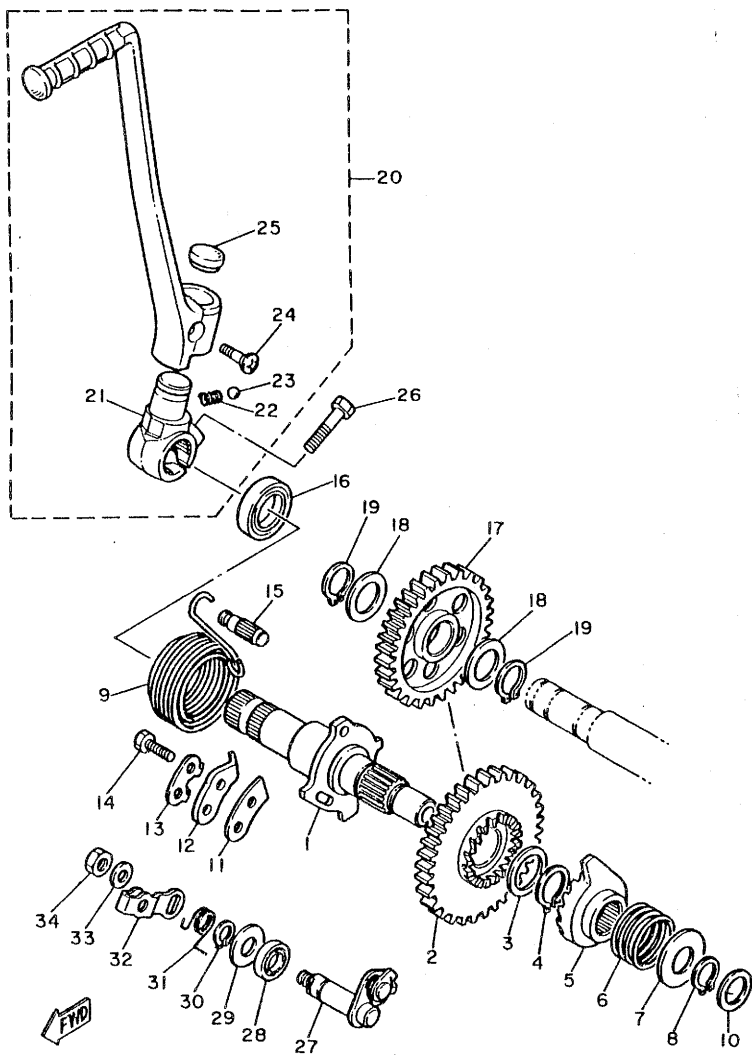
REF. NO.	PART NO.	DESCRIPTION	Q'TY	REMARKS
29	5Y1-1562F-01	PLATE, decomP	1	



5Y1110-3110

C3

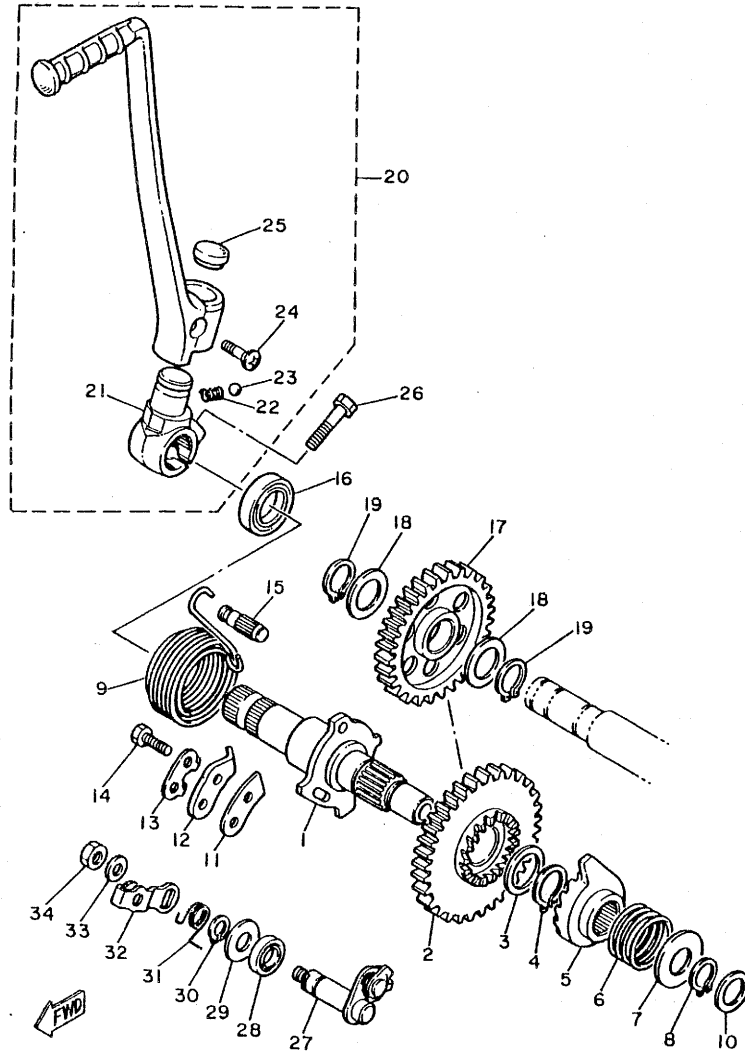
FIG. 12 STARTER



5Y1110-2130

REF. NO.	PART NO.	DESCRIPTION	Q'TY	REMARKS
1	5Y1-15660-00	KICK AXLE ASSY	1	
2	34K-15641-00	GEAR, kick(35T)	1	
3	90201-20685	WASHER, Plate	1	
4	93410-20038	CIRCLIP	1	
5	5Y1-15671-00	WHEEL, ratchet	1	
6	90501-16107	SPRING, compression	1	
7	168-15676-00	COVER, spring	1	
8	93410-15005	CIRCLIP	1	
9	90508-32529	SPRING, torsion	1	
10	90201-15701	WASHER, Plate (1.0T)	1	
11	2K7-15668-00	STOPPER	1	
12	214-15674-00	GUIDE, ratchet wheel	1	
13	214-15686-00	WASHER, lock	1	
14	97321-06016	BOLT	2	
15	248-15668-00	STOPPER	1	
16	93102-20108	OIL SEAL	1	
17	5Y1-15651-01	GEAR, kick idle	1	
18	90201-20276	WASHER, Plate	2	
19	93410-20009	CIRCLIP	2	
20	5Y1-15620-00	KICK CRANK ASSY	1	
21	5Y1-15621-00	•BOSS, kick crank	1	
22	90501-12081	•SPRING, compression	1	
23	93507-32009	•BALL	1	
24	90152-06010	•SCREW, countersunk	1	
25	90336-18038	•PLUG, taper	1	
26	97311-08030	BOLT	1	
27	3Y1-1561A-02	DECOMP. LEVER ASSY	1	
28	93102-10207	OIL SEAL	1	

FIG. 12 STARTER

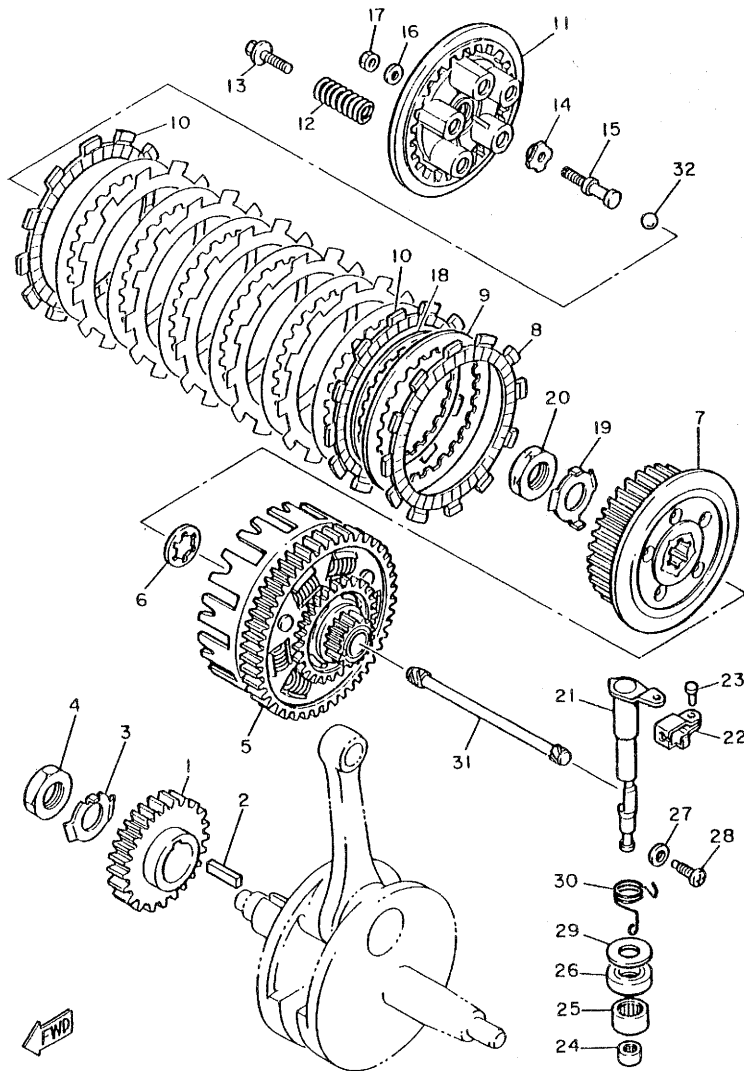


5Y1110-2130

REF. NO.	PART NO.	DESCRIPTION	Q'TY	REMARKS
29	90201-10135	WASHER, Plate	1	
30	93410-10025	CIRCLIP	1	
31	90508-14524	SPRING, torsion	1	
32	5Y1-1561G-00	LEVER, cable	1	
33	90201-061A5	WASHER, Plate	1	
34	95311-06700	NUT	1	

C5

FIG. 13 CLUTCH



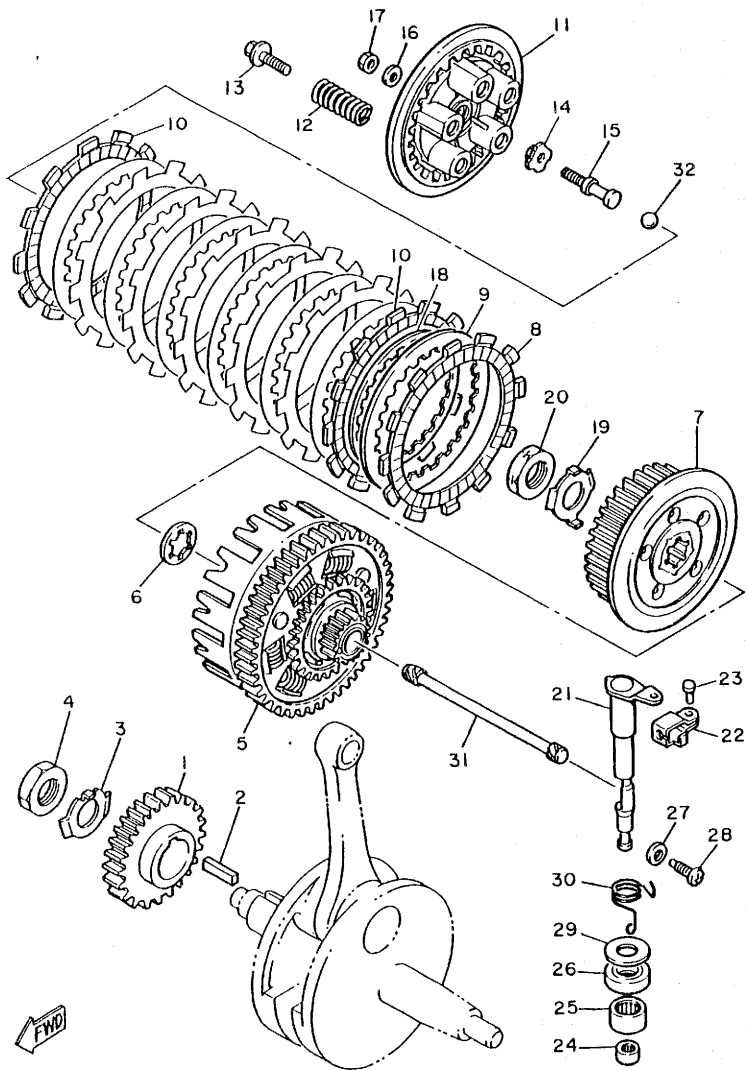
34K100-3130

REF. NO.	PART NO.	DESCRIPTION	Q'TY	REMARKS
1	34K-16111-00	GEAR, Primary drive(31T)	1	
2	90282-07042	KEY, straight	1	
3	90215-20197	WASHER, lock	1	
4	90170-20274	NUT	1	
5	34K-16150-00	PRIMARY DRIVEN GEAR COMP.(74T)	1	
6	3Y1-16154-00	PLATE, thrust 1	1	
7	34K-16371-00	BOSS, clutch	1	
8	5Y1-16321-00	PLATE, friction	6	
9	30X-16325-00	PLATE, clutch 2	7	
10	5Y1-16331-00	PLATE, friction 2	2	
11	5Y1-16351-00	PLATE, Pressure 1	1	
12	90501-26148	SPRING, compression	5	
13	90159-06016	SCREW, with washer	5	
14	30X-16358-00	PLATE, Push	1	
15	34K-16356-00	ROD, Push 1	1	
16	92901-06200	WASHER, Plain	1	
17	95301-06600	NUT	1	
18	5Y1-16383-00	SPRING, clutch boss	1	
19	90215-20231	WASHER, lock	1	
20	90170-20327	NUT	1	
21	5Y1-16381-00	PUSH LEVER COMP.	1	
22	214-16389-00	JOINT	1	
23	90243-06016	PIN	1	
24	93317-11020	BEARING, cylindrical	1	
25	93315-11720	BEARING, cylindrical	1	
26	93102-17148	OIL SEAL	1	
27	90430-08119	GASKET	1	
28	90149-08067	SCREW	1	

C6

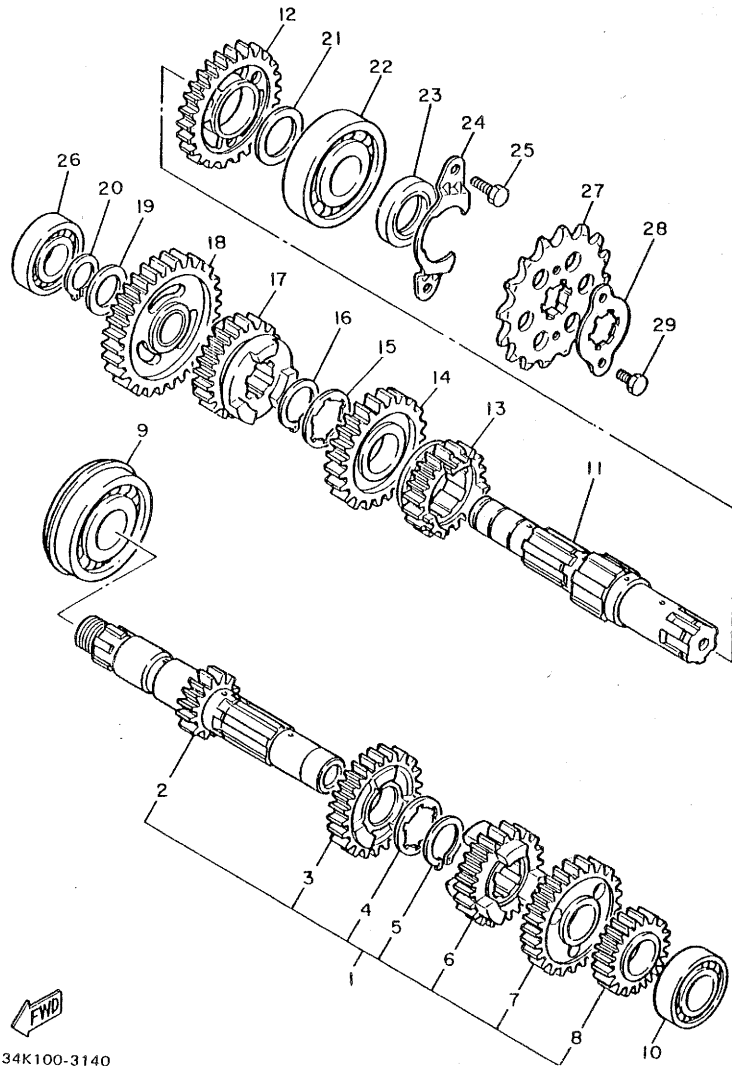
FIG. 13 CLUTCH

REF. NO.	PART NO.	DESCRIPTION	Q'TY	REMARKS
29	90201-17327	WASHER, Plate	1	
30	90508-14526	SPRING, torsion	1	
31	34K-16357-00	ROD, Push 2	1	
32	93515-32029	BALL	1	



34K100-3130

C7

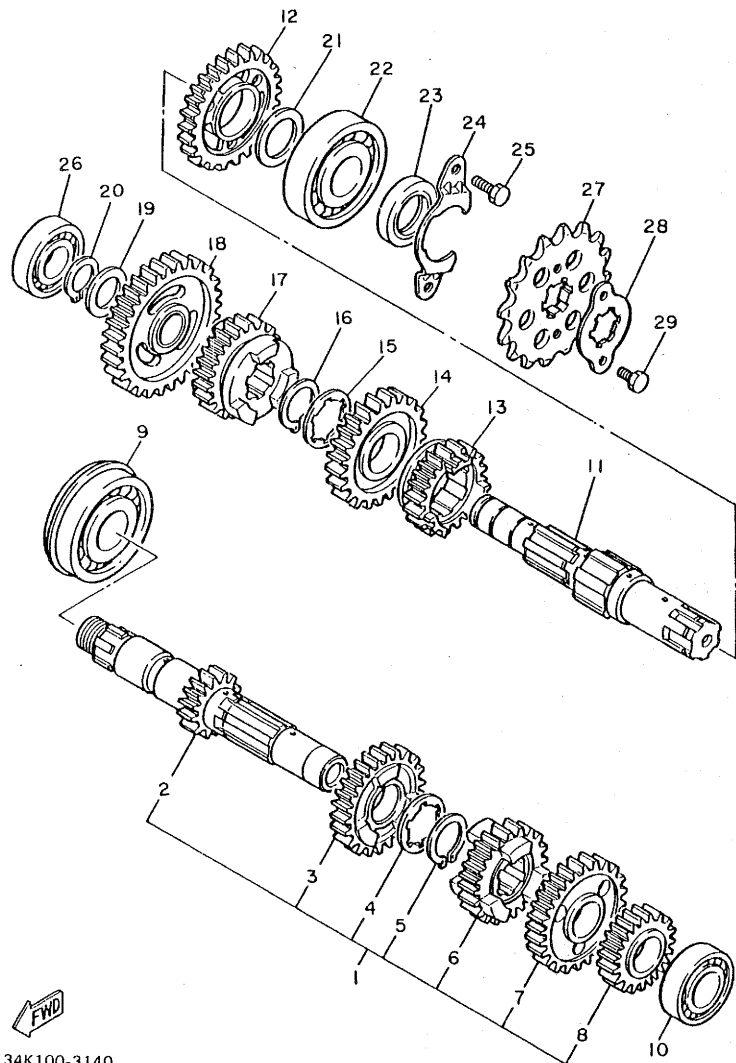


34K100-3140

FIG. 14 TRANSMISSION

REF. NO.	PART NO.	DESCRIPTION	Q'TY	REMARKS
1	43F-17410-00	MAIN AXLE COMP.	1	
2	34L-17411-00	•AXLE, main(12T)	1	
3	34K-17141-00	•GEAR, 4th Pinion(22T)	1	
4	90209-22191	•WASHER	1	
5	93440-25019	•CIRCLIP	1	
6	5Y1-17131-00	•GEAR, 3rd Pinion(20T)	1	
7	5Y1-17151-01	•GEAR, 5th Pinion	1	
8	34K-17121-01	•GEAR, 2nd Pinion	1	
9	93306-30540	BEARING	1	
10	93306-00431	BEARING	1	
11	34K-17402-00	DRIVE AXLE ASSY	1	
12	5Y1-17221-01	GEAR, 2nd wheel	1	
13	5Y1-17251-00	GEAR, 5th wheel(21T)	1	
14	34K-17231-00	GEAR, 3rd wheel(24T)	1	
15	90209-22191	WASHER	1	
16	93440-25019	CIRCLIP	1	
17	34K-17241-00	GEAR, 4th wheel(21T)	1	
18	34L-17211-00	GEAR, 1st wheel(31T)	1	
19	90201-20276	WASHER, Plate	1	
20	93410-20009	CIRCLIP	1	
21	117-15644-00	SHIM	1	
22	93306-30535	BEARING	1	
23	93102-25226	OIL SEAL	1	
24	34K-17471-00	PLATE, cover	1	
25	97321-06014	BOLT	2	
26	93306-00426	BEARING	1	
27	5Y1-17461-50	SPROCKET, drive (15T)	1	
28	3Y1-17456-00	HOLDER, sProcket	1	

FIG. 14 TRANSMISSION

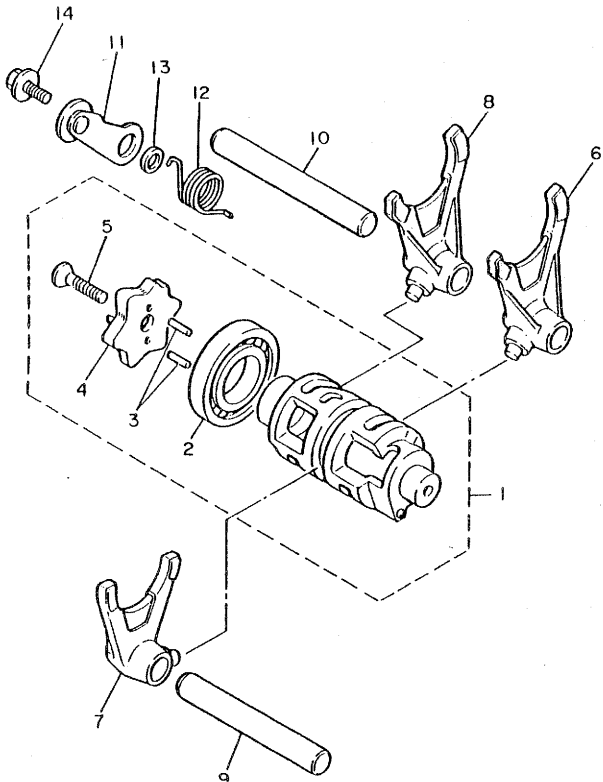


REF. NO.	PART NO.	DESCRIPTION	Q'TY	REMARKS
29	97322-06010	BOLT	2	

34K100-3140

**C9**

FIG. 15 SHIFT CAM. FORK

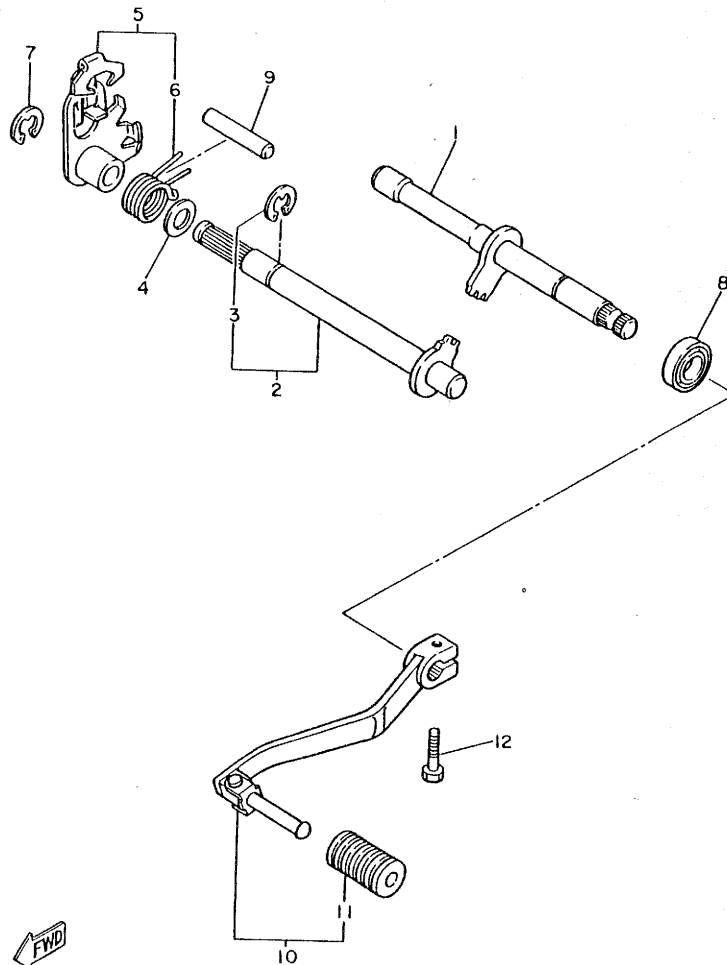


REF. NO.	PART NO.	DESCRIPTION	Q'TY	REMARKS
1	5Y1-18540-00	SHIFT CAM ASSY	1	
2	93316-00503	•BEARING, cylindrical	1	
3	93604-10011	•PIN, dowel	2	
4	5Y1-18185-00	•SEGMENT	1	
5	90151-06017	•SCREW, countersunk	1	
6	5Y1-18511-00	FORK, shift 1	1	
7	5Y1-18512-00	FORK, shift 2	1	
8	5Y1-18513-00	FORK, shift 3	1	
9	34K-18531-00	BAR, shift fork guide 1	1	
10	34K-18535-00	BAR, shift fork guide 2	1	
11	34K-18140-00	STOPPER LEVER ASSY	1	
12	90508-29527	SPRING, torsion	1	
13	90387-063F7	COLLAR	1	
14	90159-06078	SCREW, with washer	1	



34K100-3150

FIG. 16 SHIFT SHAFT



REF. NO.	PART NO.	DESCRIPTION	Q'TY	REMARKS
1	43F-18102-00	SHIFT SHAFT ASSY 2	1	
2	5Y1-18101-00	SHIFT SHAFT ASSY	1	
3	93430-10016	•CIRCLIP	1	
4	90201-12474	WASHER, Plate	1	
5	34K-18120-00	SHIFT LEVER ASSY	1	
6	90508-29629	•SPRING, torsion	1	
7	93430-09035	CIRCLIP	1	
8	93102-12106	OIL SEAL	1	
9	93608-33046	PIN, dowel	1	
10	34L-18110-00	SHIFT PEDAL ASSY	1	
11	IW6-18113-00	•COVER, shift Pedal	1	
12	97326-06020	BOLT	1	



43F300-4160

C11

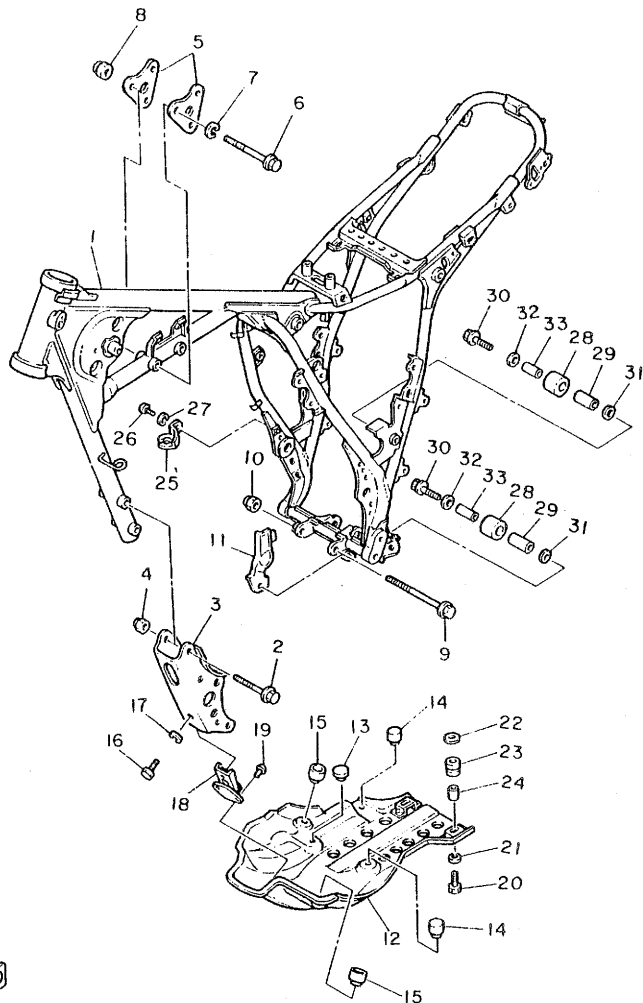
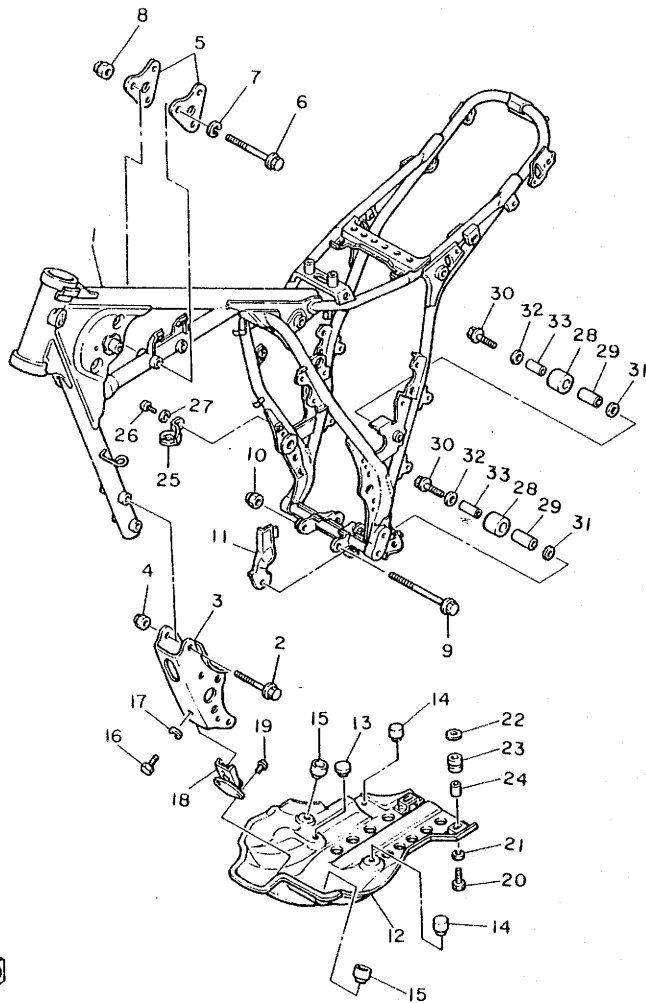


FIG. 17 FRAME

REF. NO.	PART NO.	DESCRIPTION	Q'TY	REMARKS
1	39E-21110-01-FH	FRAME COMP.	1	fire red
2	90105-10286	BOLT, washer based	4	
3	34L-21316-00-FH	STAY, engine 3	1	fire red
4	90185-10060	NUT, self-locking	4	
5	34L-21315-00	STAY, engine 2	2	
6	97311-10080	BOLT	3	
7	92901-10100	WASHER, sPring	3	
8	90185-10060	NUT, self-locking	3	
9	95811-10100	BOLT, flange	1	
10	90185-10060	NUT, self-locking	1	
11	34L-2176E-01	PLATE	1	
12	34L-21471-00	PROTECTOR, engine	1	
13	2J5-21732-00	SEAL 1	1	
14	4N0-27114-00	STOPPER, main stand	2	
15	34L-21485-00	DAMPER, rubber 1	2	
16	97306-08016	BOLT	1	
17	92906-08100	WASHER, sPring	1	
18	34L-21486-00	DAMPER 2	1	
19	90267-48079	RIVET, blind	2	
20	97306-06025	BOLT	2	
21	92906-06100	WASHER, sPring	2	
22	90201-06765	WASHER, Plate	2	
23	90480-14229	GROMMET	2	
24	90387-060A7	COLLAR	2	
25	5Y1-21441-00	BRACKET, stoP switch	1	
26	92501-06012	SCREW, Pan head	1	
27	92901-06100	WASHER, sPring	1	
28	22W-22178-01	TENSIONER	2	

  
34L332-3170

FIG. 17 FRAME



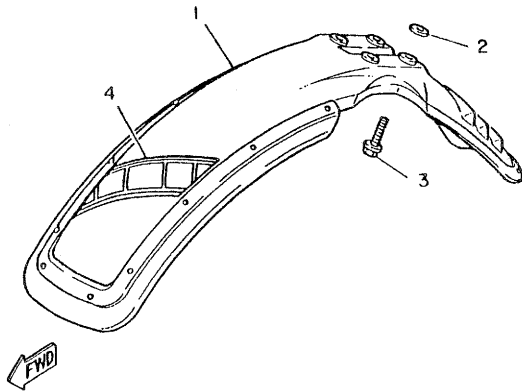
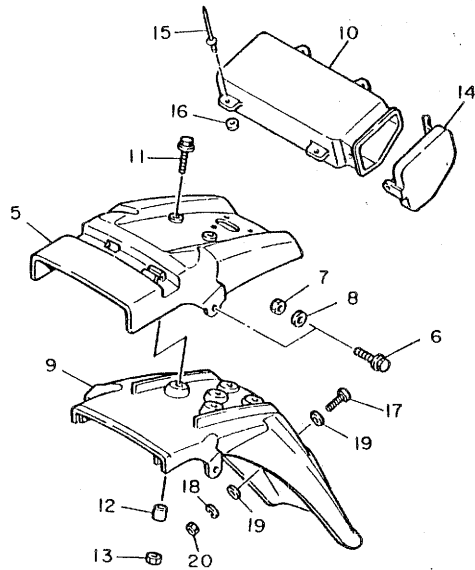
REF. NO.	PART NO.	DESCRIPTION	Q'TY	REMARKS
29	4V4-22184-00	BUSH	2	
30	90109-08705	BOLT	2	
31	90201-13409	WASHER, Plate	2	
32	90201-08113	WASHER, Plate	2	
33	90387-085E1	COLLAR	2	



34L332-3170

**C13**

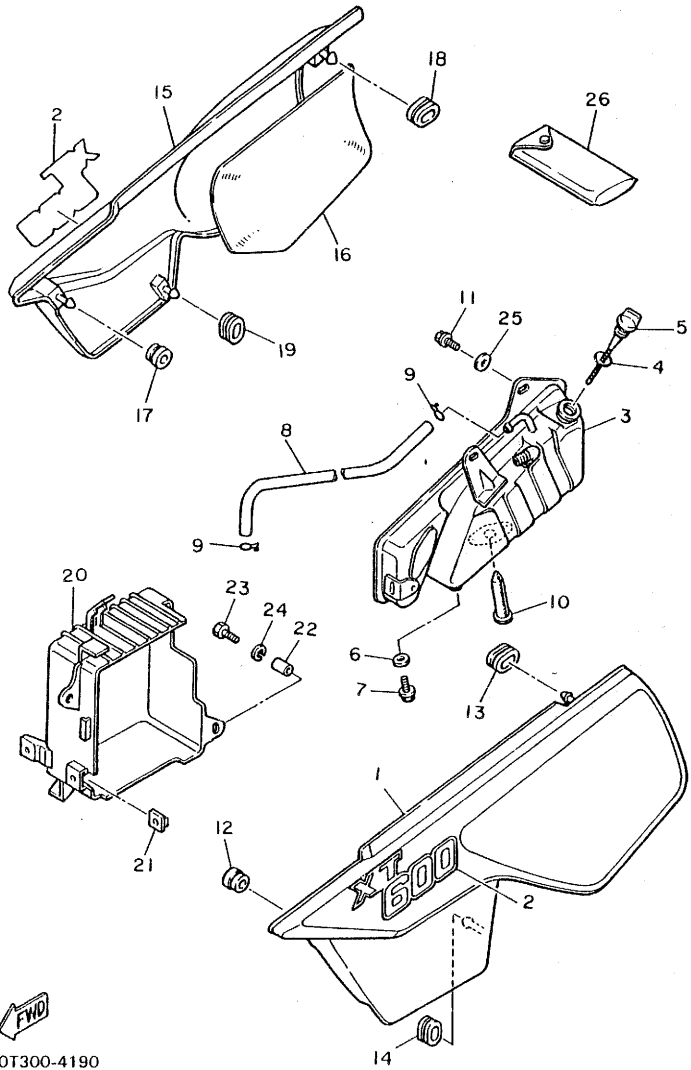
FIG. 18 FENDER



34L351-3180

REF. NO.	PART NO.	DESCRIPTION	Q'TY	REMARKS
1	34L-21510-30	FRONT FENDER COMP.	1	clean white
2	90209-06187	WASHER	4	
3	90119-06063	BOLT, with washer	4	
4	34L-21575-10	SEAL 1	1	
5	34L-21611-20	FENDER, rear	1	clean white
6	95806-08030	BOLT, flange	2	
7	95302-08600	NUT	2	
8	90201-08100	WASHER, Plate	2	
9	34L-21685-00	BRACKET, license	1	
10	34L-21170-00	BOX COMP.	1	
11	95806-06030	BOLT, flange	2	
12	90387-067F1	COLLAR	2	
13	95302-06600	NUT	2	
14	34L-28185-00	LID	1	
15	90267-32070	RIVET, blind	4	
16	92902-03200	WASHER	4	
17	92501-06020	SCREW, Pan head	1	
18	92902-06100	WASHER, sPring	1	
19	90201-06336	WASHER, Plate	2	
20	95302-06600	NUT	1	

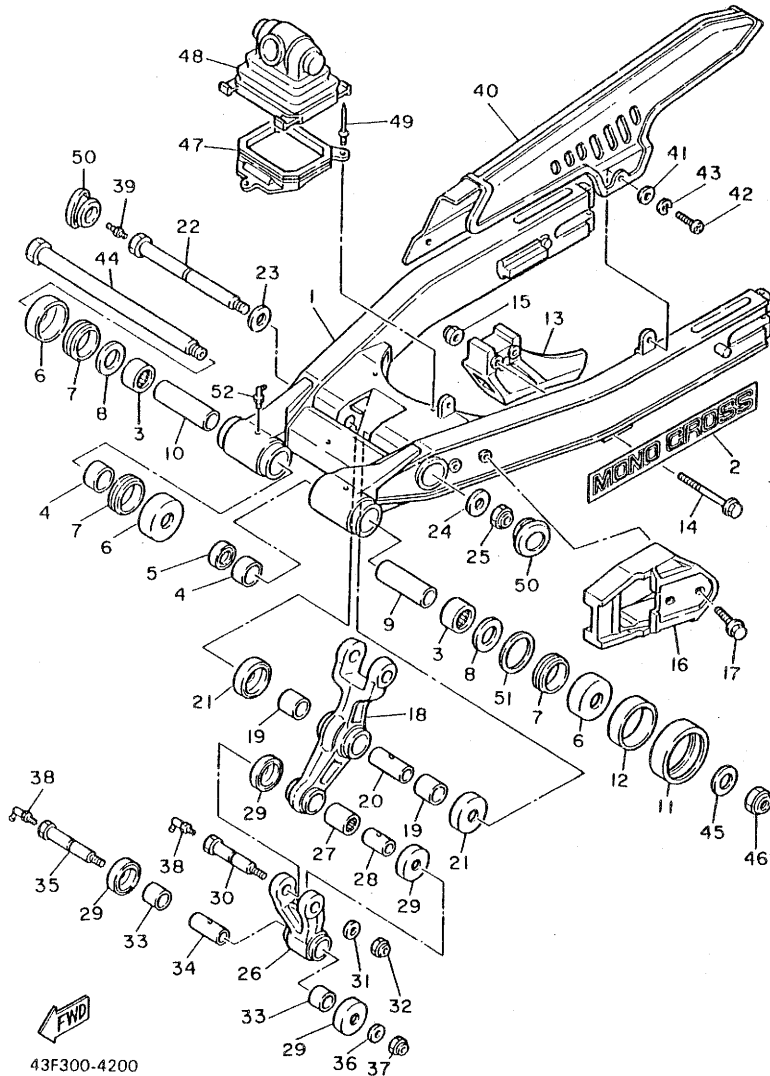
FIG. 19 SIDE COVER



50T300-4190

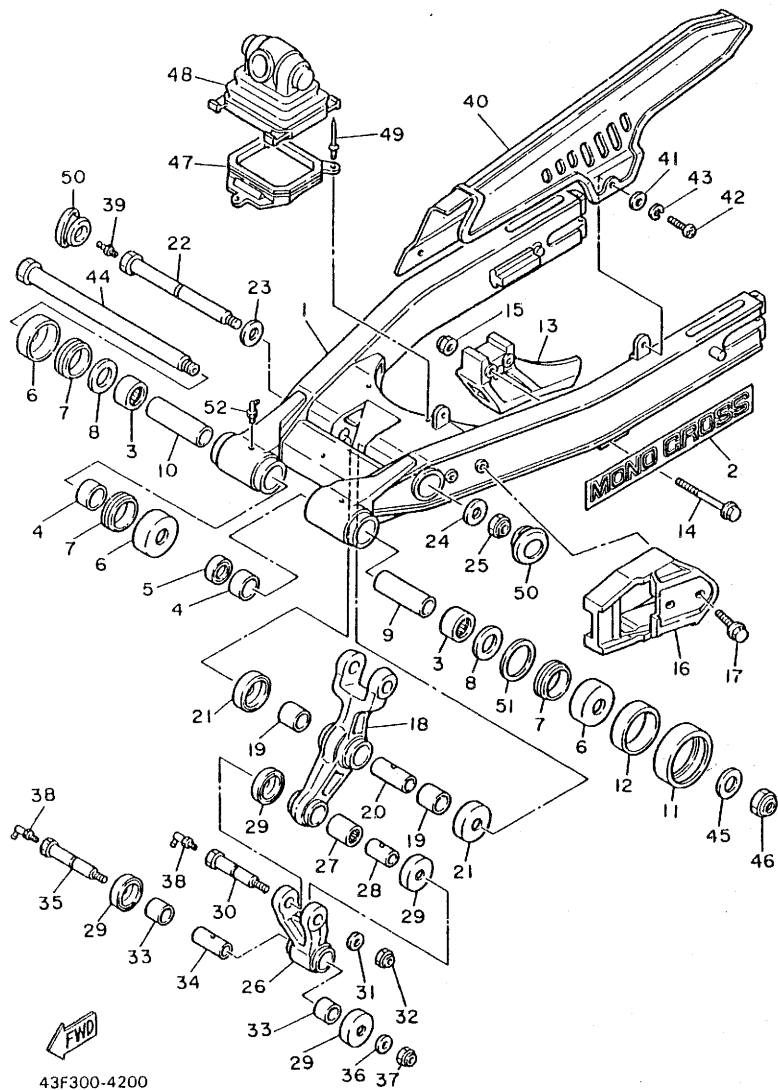
REF. NO.	PART NO.	DESCRIPTION	Q'TY	REMARKS
1	34L-21711-00-2X	COVER, side 1	1	white/low gloss black
2	34L-21781-10	EMBLEM 1	2	
3	34L-21750-02	OIL TANK ASSY	1	
4	93210-21190	O-RING	1	
5	34L-21761-01	GAUGE, level	1	
6	90430-08119	GASKET	1	
7	95801-08012	BOLT, flange	1	
8	90445-11753	HOSE	1	
9	90467-10008	CLIP	2	
10	34L-21756-01	NET, filter	1	
11	95822-08012	BOLT, flange	3	
12	90480-13197	GROMMET	1	
13	90480-01141	GROMMET	1	
14	90480-13383	GROMMET	1	
15	34L-21721-00-2X	COVER, side 2	1	white/low gloss black
16	34L-2174A-00	INSULATOR, side cover	1	
17	90480-13197	GROMMET	1	
18	90480-01141	GROMMET	1	
19	90480-13383	GROMMET	1	
20	34L-2177G-00	BOX, battery	1	
21	4H7-14484-00	PLATE, cleaner case fitting	2	
22	90387-06500	COLLAR	2	
23	97301-06016	BOLT	2	
24	92901-06100	WASHER, spring	2	
25	90201-08730	WASHER, plate	1	
26	43F-28100-00	TOOL KIT	1	

FIG. 20 REAR ARM



REF. NO.	PART NO.	DESCRIPTION	Q'TY	REMARKS
1	43F-22110-01	REAR ARM COMP.	1	
2	34L-2218A-10	EMBLEM, rear arm	2	
3	93317-32231	BEARING, cylindrical	2	
4	90380-22111	BUSH, solid	2	
5	93106-22019	OIL SEAL	1	
6	2K6-22128-01	COVER, thrust 1	3	
7	93108-35004	OIL SEAL	3	
8	90201-244A8	WASHER, Plate (1.95T)	2	
9	34L-22123-00	BUSH 1	1	
10	34L-22124-00	BUSH 2	1	
11	5X6-22151-10	SEAL, Guard	1	
12	90387-440G3	COLLAR	1	
13	34L-22153-00	GUARD, chain	1	
14	95801-06050	BOLT, flange	2	
15	95701-06500	NUT, flange	2	
16	34L-22147-00	PROTECTOR, chain	1	
17	90119-06101	BOLT, with washer	2	
18	34L-2217A-00	ARM, relay	1	
19	90386-20120	BUSH	2	
20	90380-14095	BUSH, solid	1	
21	34L-22128-00	COVER, thrust 1	2	
22	90109-120A3	BOLT	1	
23	90201-140G9	WASHER, Plate	1	
24	90201-120A5	WASHER, Plate	1	
25	90185-12119	NUT, self-locking	1	
26	34L-2217F-00	ROD, connecting 1	1	
27	93315-31732	BEARING, cylindrical	1	
28	90387-121H1	COLLAR	1	

FIG. 20 REAR ARM

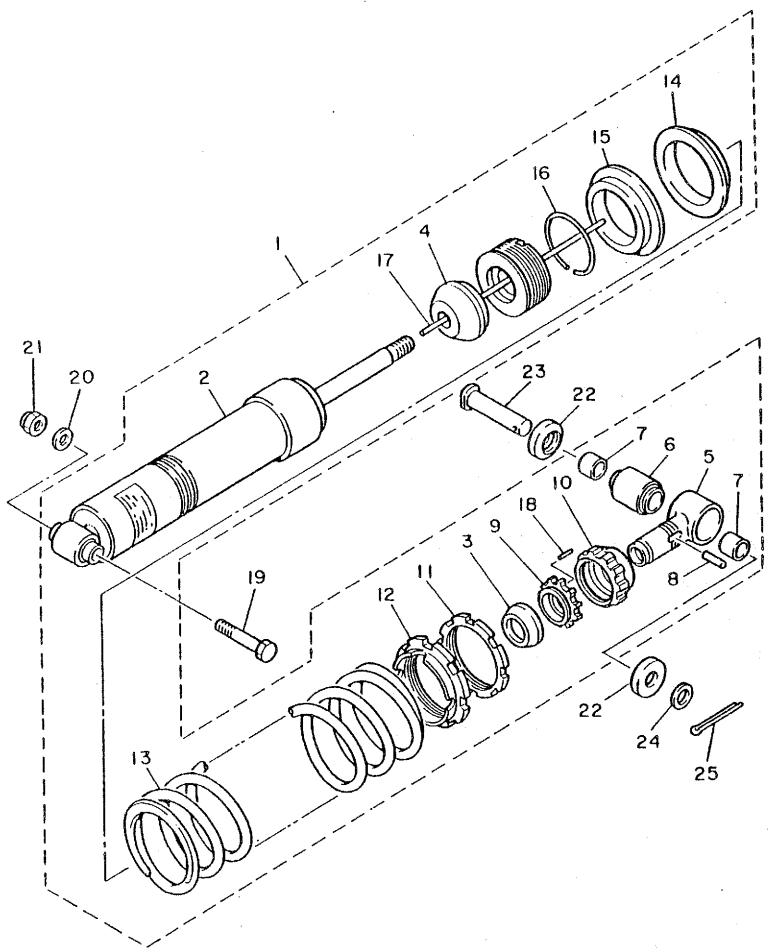


43F300-4200

REF. NO.	PART NO.	DESCRIPTION	Q'TY	REMARKS
29	23X-22129-00	COVER, thrust 2	4	
30	90109-10759	BOLT	1	
31	90201-100E9	WASHER, Plate	1	
32	90185-10120	NUT, self-locking	1	
33	90386-20123	BUSH	2	
34	90387-122J6	COLLAR	1	
35	90109-10760	BOLT	1	
36	90201-10430	WASHER, Plate	1	
37	90185-10120	NUT, self-locking	1	
38	93700-06005	NIPPLE, grease	2	
39	93700-06004	NIPPLE, grease	1	
40	34L-22311-01	CASE, chain	1	
41	90201-062A8	WASHER, Plate	2	
42	92506-06012	SCREW, Pan head	2	
43	92906-06100	WASHER, spring	2	
44	34K-22141-00	SHAFT, pivot	1	
45	90201-15238	WASHER, Plate	1	
46	90185-14116	NUT, self-locking	1	
47	34L-2216G-00	SUPPORT, boot	1	
48	34L-22189-00	BOOT, rubber	1	
49	90267-32072	RIVET, blind	3	
50	34L-22117-00	CAP	2	
51	90201-251F6	WASHER, Plate	1	
52	93700-06005	NIPPLE, grease	2	

D3

FIG. 21 REAR SUSPENSION



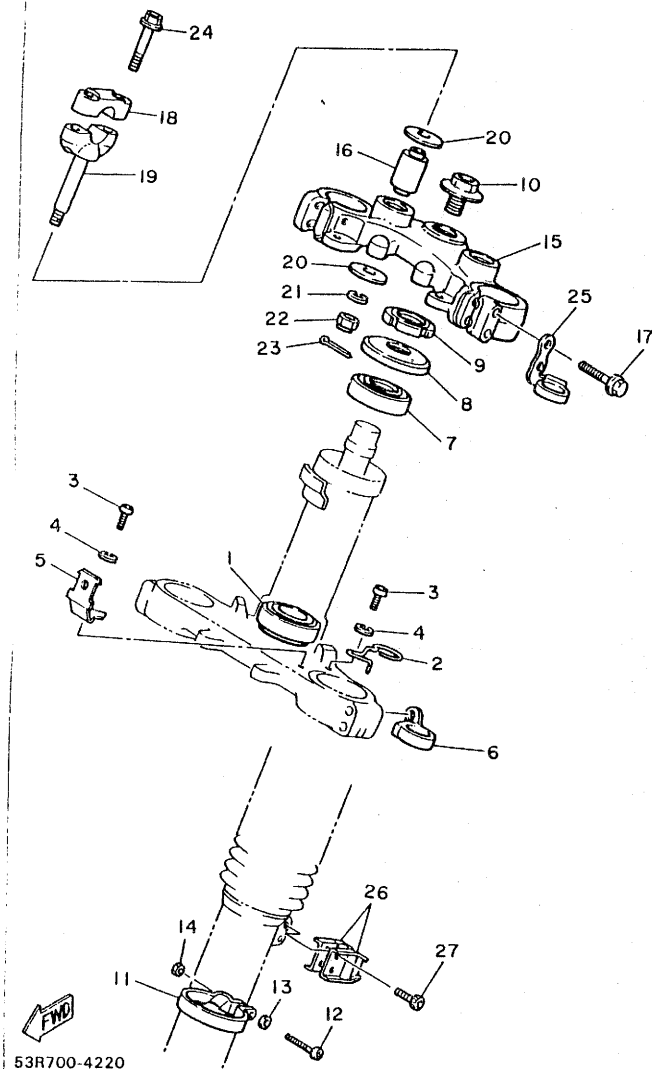
REF. NO.	PART NO.	DESCRIPTION	Q'TY	REMARKS
1	50T-22210-00-6W	SHOCK ABSORBER ASSY, rear	1	native red
2	50T-22401-00	•DAMPER SUB ASSY	1	
3	3R4-22221-01	•COVER	1	
4	50T-22493-00	•BUMP, stoP	1	
5	50T-22409-00	•UPPER BRACKET SUB ASSY	1	
6	34L-22226-00	•BUSH, shock absorber lower	1	
7	90380-14130	•BUSH, solid	2	
8	93604-26132	•PIN, dowel	1	
9	50T-22497-00	•NUT, adjustinG	1	
10	50T-22211-00	•COVER	1	
11	50T-22215-00	•RING, cover	1	
12	50T-22213-00	•SEAT, sPrinG upper	1	
13	34L-22212-00-6W	•SPRING	1	native red
14	50T-22224-00	•GUIDE, sPrinG 2	1	
15	3Y1-22223-00	•SEAT, sPrinG lower	1	
16	93440-48079	•CIRCLIP	1	
17	93604-21193	•PIN, dowel	1	
18	93602-11144	•PIN, dowel	1	
19	90101-12498	BOLT	1	
20	90201-12362	WASHER, Plate	1	
21	90185-12080	NUT, self-lockinG	1	
22	34L-22129-00	COVER, thrust 2	2	
23	90240-14106	PIN, clevis	1	
24	92901-14600	WASHER	1	
25	91401-30025	PIN, cotter	1	



43F300-4210

**D4**

FIG. 22 STEERING

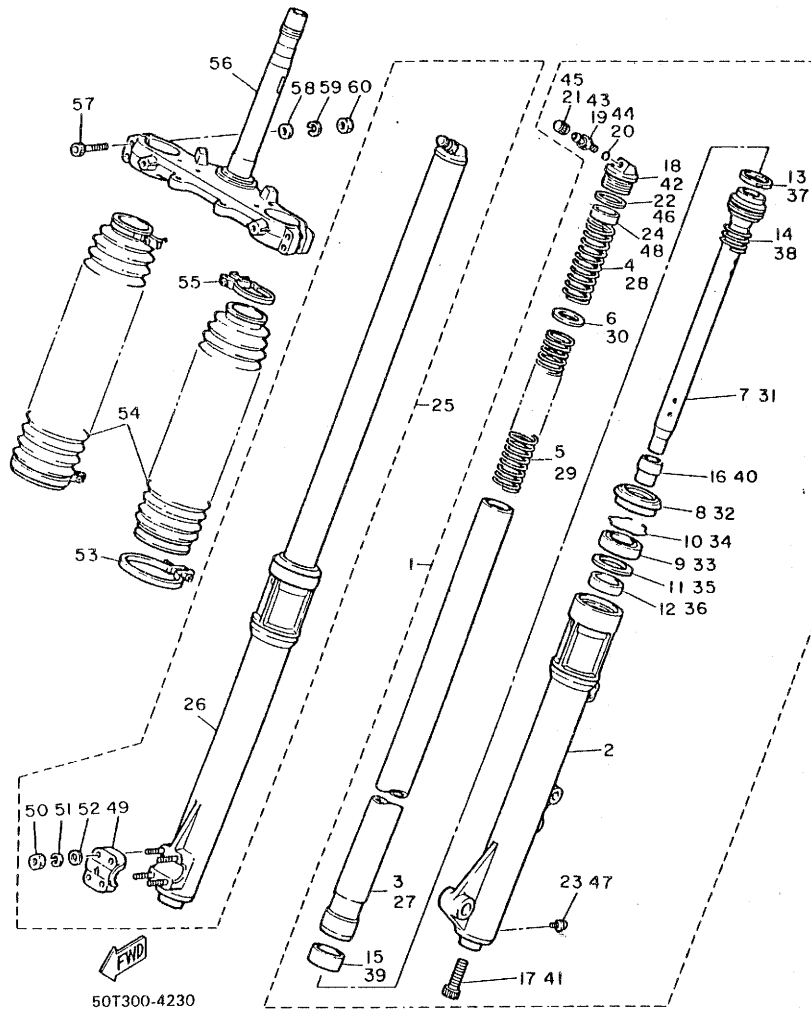


53R700-4220

REF. NO.	PART NO.	DESCRIPTION	Q'TY	REMARKS
1	93332-00008	BEARING	1	
2	34L-2331E-00	GUIDE, cable	1	
3	92501-06012	SCREW, Pan head	2	
4	92901-06100	WASHER, sPring	2	
5	34L-2317E-00	STAY	1	
6	3Y1-2331E-00	GUIDE, cable	1	
7	93332-00023	BEARING	1	
8	1W1-23416-00	COVER, ball race 2	1	
9	90179-25033	NUT	1	
10	90105-14102	BOLT, washer based	1	
11	34L-23318-00	HOLDER, cable 1	1	
12	98501-05020	SCREW, Pan head	1	
13	92901-05600	WASHER, Plate	1	
14	95301-05600	NUT	1	
15	34L-23435-00-98	CROWN, handle	1	low gloss black
16	5A8-23434-00	HOLDER, damPer	2	
17	95826-08040	BOLT, flange	4	
18	1E6-23441-00	HOLDER, handle upper	2	
19	3Y6-23442-00-98	HOLDER, handle lower	2	low gloss black
20	90201-10141	WASHER, Plate	4	
21	92901-10100	WASHER, sPring	2	
22	95301-10700	NUT	2	
23	90468-12006	CLIP	2	
24	95826-08035	BOLT, flange	4	
25	34L-23389-00	GUIDE, cable	1	
26	90465-14192	CLAMP	2	
27	91316-06012	BOLT	2	

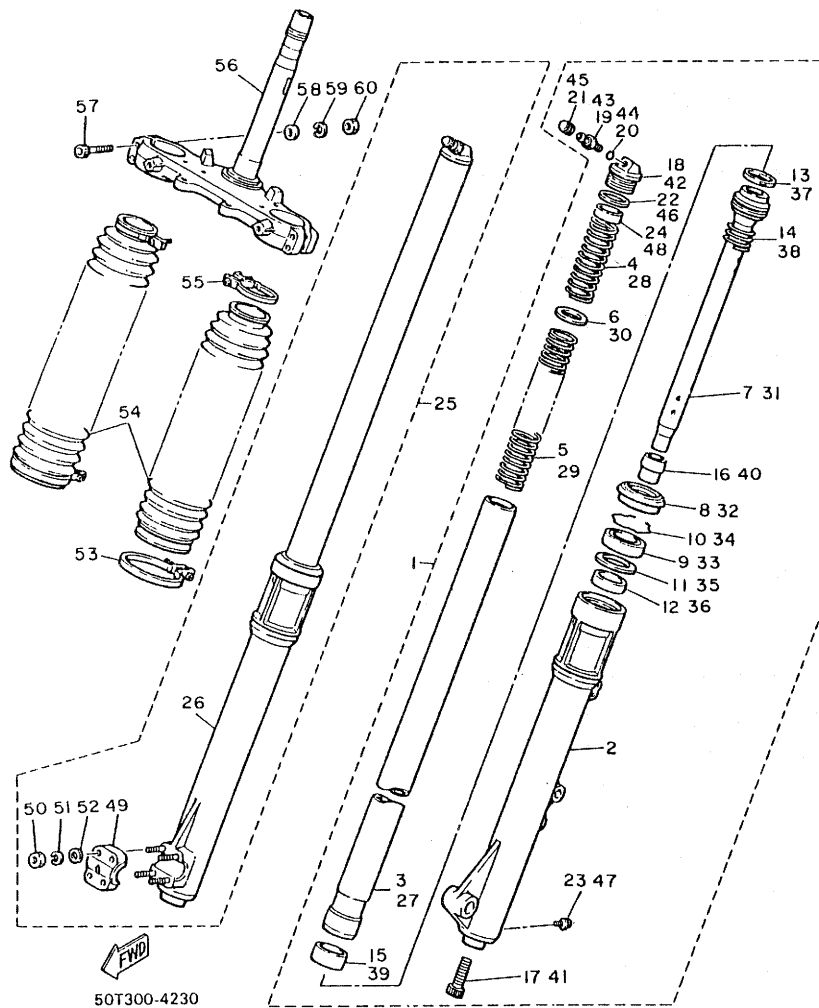
D5

FIG. 23 FRONT FORK



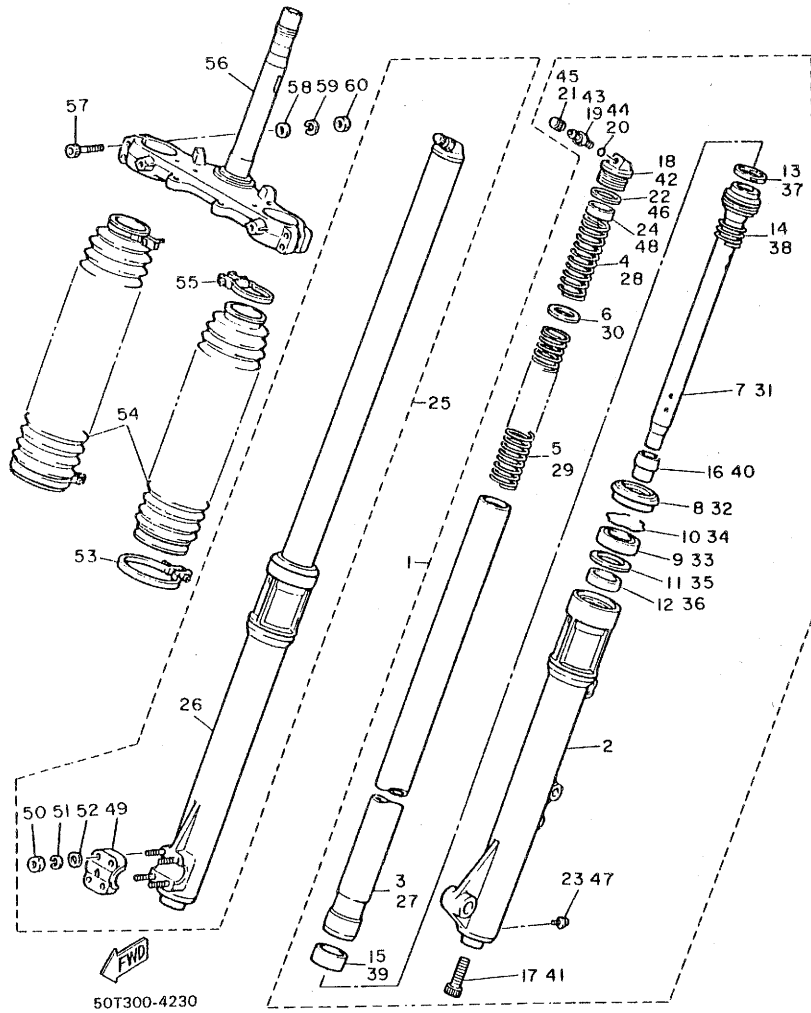
REF. NO.	PART NO.	DESCRIPTION	Q'TY	REMARKS
1	50T-W2313-00	FRONT FORK ASSY (L.H)	1	
2	34L-23130-00-38	.FORK UNIT ASSY	1	clear buffing
3	50T-23110-00	.INNER TUBE COMP.1	1	
4	34L-23351-00	.SPRING	1	
5	34L-23141-00	.SPRING, front fork	1	
6	34L-23142-00	.SEAT, spring upper	1	
7	50T-23170-00	.CYLINDER COMP., front fork	1	
8	34L-23144-00	.SEAL, dust	1	
9	34L-23145-00	.OIL SEAL	1	
10	34L-23153-00	.RING, snap	1	
11	34L-23147-00	.O-RING	1	
12	34L-23135-00	.METAL, slide 2	1	
13	34L-23157-00	.RING, piston	1	
14	34L-23151-00	.SPRING, rebound	1	
15	50T-23171-00	.PISTON, front fork	1	
16	34L-23166-00	.SPACER, oil lock	1	
17	3M7-23181-00	.BOLT, hexagon socket head	1	
18	34L-23111-00	.BOLT, cap	1	
19	5K7-23190-00	.AIR VALVE COMP.	1	
20	3H3-23147-00	.O-RING	1	
21	34L-23190-00	.AIR VALVE COMP.	1	
22	34L-23114-00	.GASKET	1	
23	1E7-23119-00	.PLUG, drain	1	
24	50T-23118-00	.SPACER	1	
25	50T-W2314-00	FRONT FORK ASSY (R.H)	1	
26	34L-23140-00-38	.FORK UNIT ASSY 2	1	clear buffing
27	50T-23110-00	.INNER TUBE COMP.1	1	
28	34L-23351-00	.SPRING	1	

FIG. 23 FRONT FORK



REF. NO.	PART NO.	DESCRIPTION	Q'TY	REMARKS
29	34L-23141-00	•SPRING, front fork	1	
30	34L-23142-00	•SEAT, sPrinG upper	1	
31	50T-23170-00	•CYLINDER COMP., front fork	1	
32	34L-23144-00	•SEAL, dust	1	
33	34L-23145-00	•OIL SEAL	1	
34	34L-23153-00	•RING, snaP	1	
35	34L-23147-00	•O-RING	1	
36	34L-23135-00	•METAL, slide 2	1	
37	34L-23157-00	•RING, Piston	1	
38	34L-23151-00	•SPRING, rebound	1	
39	50T-23171-00	•PISTON, front fork	1	
40	34L-23166-00	•SPACER, oil lock	1	
41	3M7-23181-00	•BOLT, hexaGon socket head	1	
42	34L-23111-00	•BOLT, caP	1	
43	5K7-23190-00	•AIR VALVE COMP.	1	
44	3H3-23147-00	•O-RING	1	
45	34L-23190-00	•AIR VALVE COMP.	1	
46	34L-23114-00	•GASKET	1	
47	1E7-23119-00	•PLUG, drain	1	
48	50T-23118-00	•SPACER	1	
49	34L-23167-00	•HOLDER, axle	1	
50	95301-06600	•NUT	4	
51	92901-06100	•WASHER, sPrinG	4	
52	92901-06200	•WASHER, Plain	4	
53	34L-23489-00	BAND	2	
54	34L-23191-10	BOOT	2	chaPPy red
55	34L-23192-00	BAND	2	
56	39E-23340-00-39	UNDER BRACKET COMP.	1	clear no buffinG

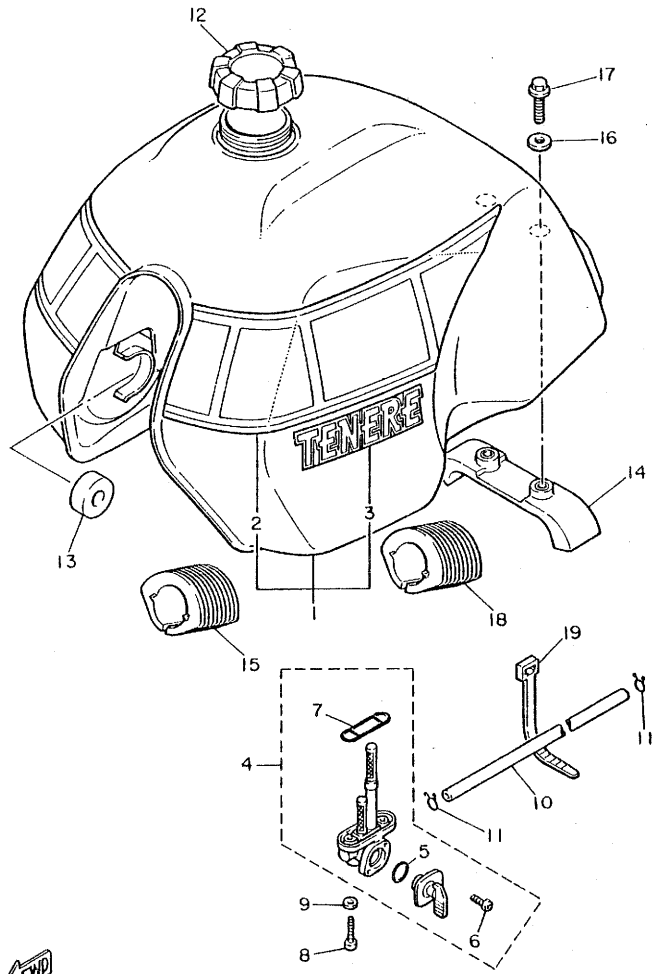
FIG. 23 FRONT FORK



REF. NO.	PART NO.	DESCRIPTION	Q'TY	REMARKS
57	34L-23181-00	BOLT, hexagon socket head	4	
58	92901-08600	WASHER, Plate	4	
59	92901-08100	WASHER, sPring	4	
60	95311-08600	NUT	4	

D8

FIG. 24 FUEL TANK

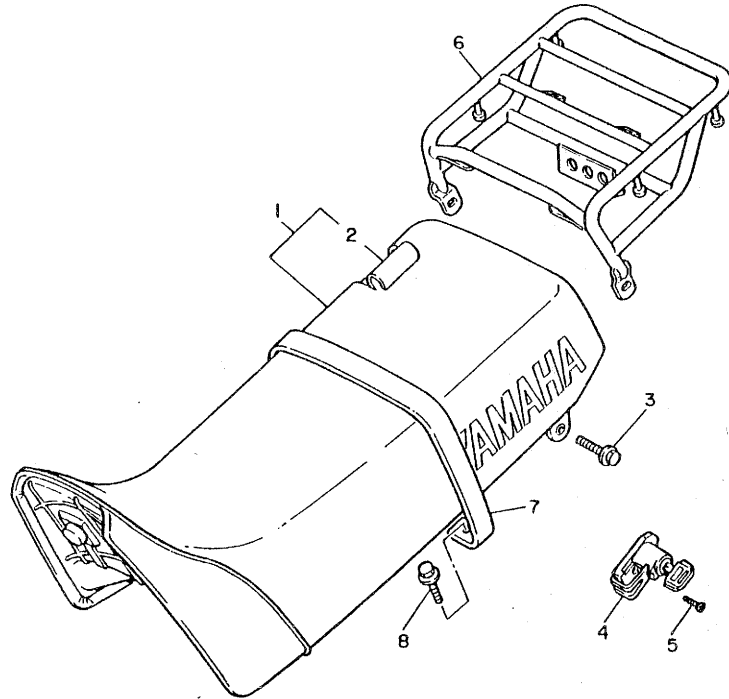


REF. NO.	PART NO.	DESCRIPTION	Q'TY	REMARKS
1	34L-24110-00-02	FUEL TANK COMP.	1	clean white
2	34L-24240-10	•GRAPHIC SET	1	
3	34L-24161-10	•EMBLEM 1	2	
4	34L-24500-01	FUEL COCK ASSY 1	1	
5	4X8-24533-00	•SEAL, cock	1	
6	98501-03008	•SCREW, Pan head	2	
7	4X8-24512-00	•GASKET	1	
8	90149-06011	SCREW	2	
9	90202-06010	WASHER, Plate	2	
10	34L-24311-00	PIPE, fuel 1	1	
11	90467-09006	CLIP	2	
12	34L-24610-00	CAP ASSY	1	
13	156-24181-00	DAMPER, locating 1	2	
14	34L-24182-00	DAMPER, locating 2	1	
15	34L-24183-00	DAMPER, locating 3	2	
16	90201-060H4	WASHER, Plate	2	
17	95801-06012	BOLT, flange	2	
18	34L-24184-00	DAMPER, locating 4	2	
19	12R-82591-00	BAND	2	

34L332-3240

D9

FIG. 25 SEAT



REF. NO.	PART NO.	DESCRIPTION	Q'TY	REMARKS
1	34L-24770-12	SEMI-DOUBLE SEAT ASSY	1	
2	34L-24731-11	COVER, seat	1	
3	95806-06016	BOLT, flange	2	
4	5H0-21308-00	HELMET HANGER ASSY	1	
5	92701-06015	SCREW, flat head	1	
6	34L-24830-01-98	SUB CARRIER ASSY	1	low gloss black
7	34L-24734-00	BAND, seat	1	
8	90119-06056	BOLT, with washer	2	

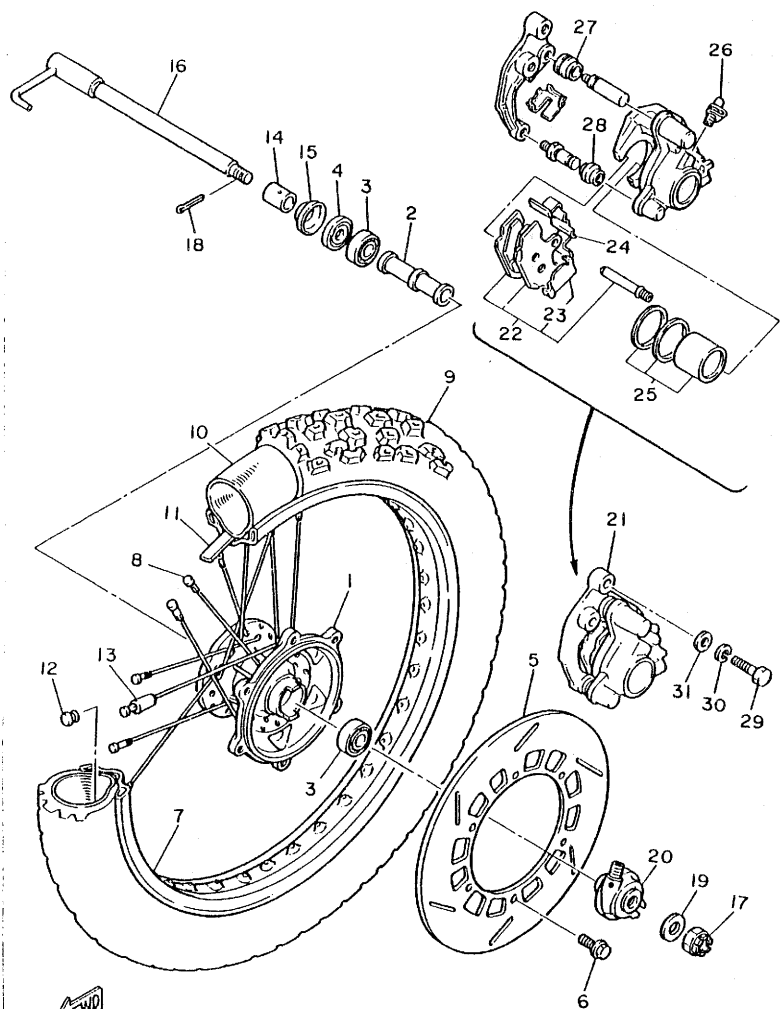


53R700-4250

D10

FIG. 26 FRONT WHEEL

REF. NO.	PART NO.	DESCRIPTION	Q'TY	REMARKS
1	34L-25111-00-98	HUB, front	1	low gloss black
2	90560-15240	SPACER	1	
3	93306-20205	BEARING (B6202)	2	
4	93102-20281	OIL SEAL	1	
5	34L-25831-00	DISC, brake (RIGHT)	1	
6	90109-06757	BOLT	6	
7	94416-21367	RIM (1.60-21)	1	
8	34L-25104-00	SPOKE SET, front	1	
9	94130-211E8	TIRE (3.00-21)	1	dunlop
10	94227-21101	TUBE (2.75-21)	1	dunlop
11	94327-21071	BAND, rim (2.75-21)	1	dunlop
12	90480-10068	GROMMET	1	
13	156-25398-00	BALANCER, wheel	1	
14	90387-152J3	COLLAR	1	
15	322-25118-00	COVER, hub dust	1	
16	34L-25181-00	AXLE, wheel	1	
17	90171-14020	NUT, castle	1	
18	91401-30030	PIN, cotter	1	
19	90201-15785	WASHER, Plate	1	
20	34L-25190-00	GEAR UNIT ASSY	1	
21	34L-25810-10	CALIPER ASSY (LEFT)	1	
22	34L-W0045-10	•BRAKE PAD KIT, front	1	
23	11U-25827-10	•SHIM, caliPer	1	
24	34L-25919-00	•SUPPORT, Pad	1	
25	4X8-W0057-00	•PISTON ASSY, caliPer	1	
26	404-W0048-30	•BREED SCREW KIT	1	
27	4X8-25917-00	•BOOT, caliPer	1	
28	5R2-25937-00	•BOOT 2	1	

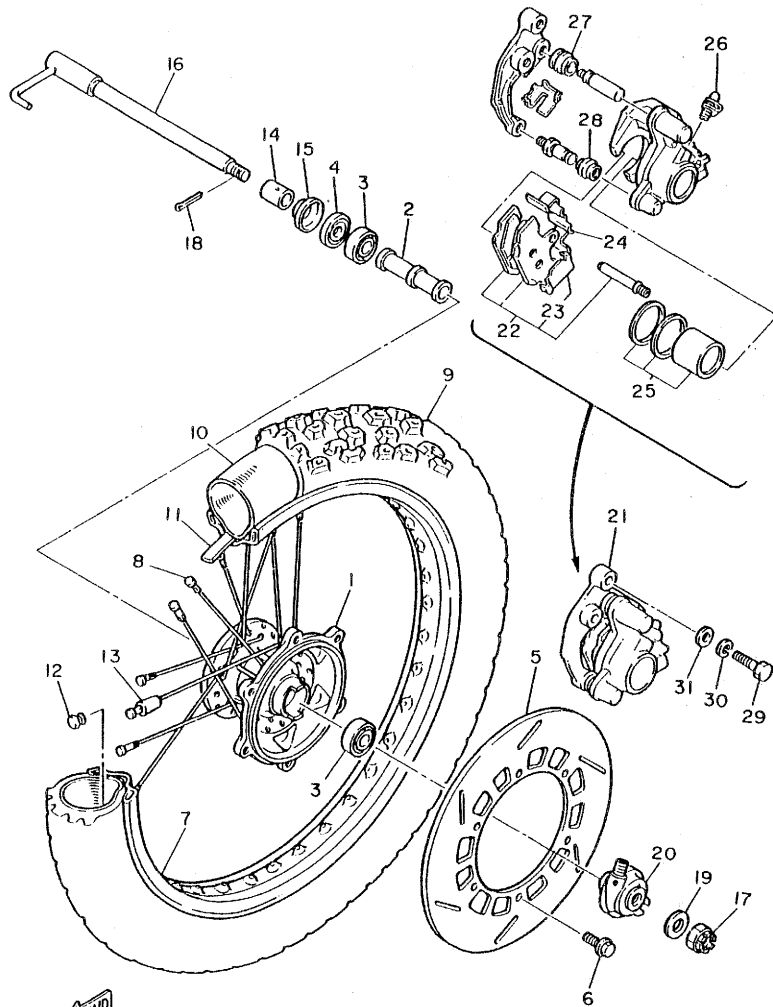


FWD

34L351-3260

D11

FIG. 26 FRONT WHEEL



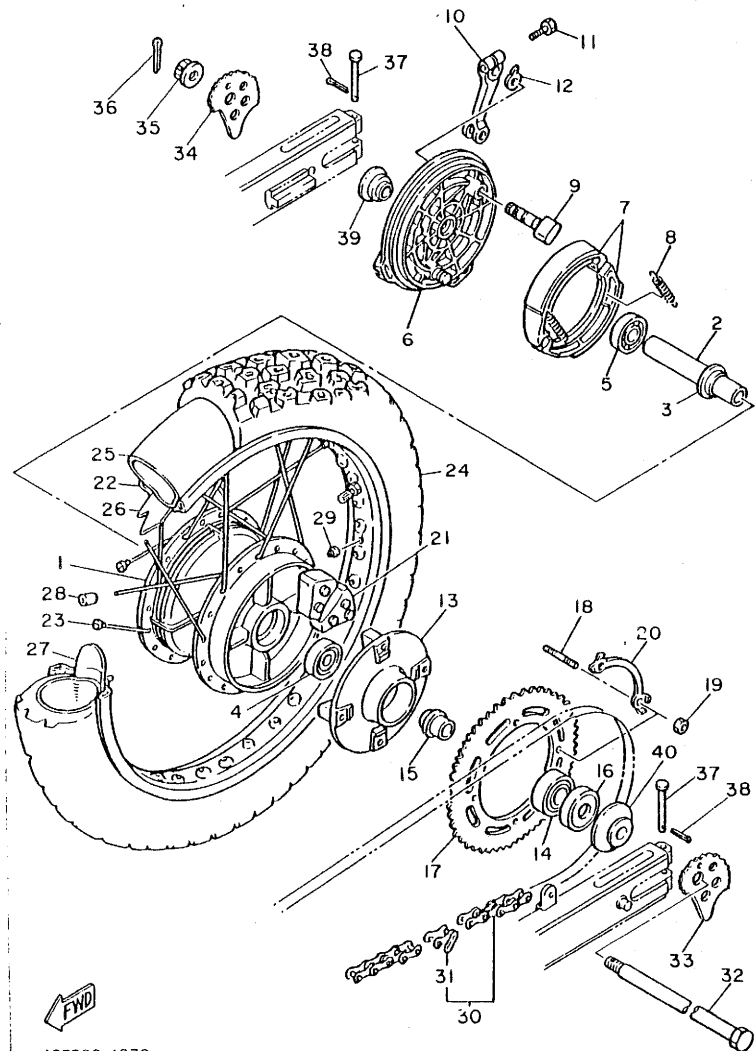
FWD

34L351-3260

REF. NO.	PART NO.	DESCRIPTION	Q'TY	REMARKS
29	90101-10308	BOLT	2	
30	92901-10100	WASHER, sPring	2	
31	92901-10200	WASHER, Plain	2	

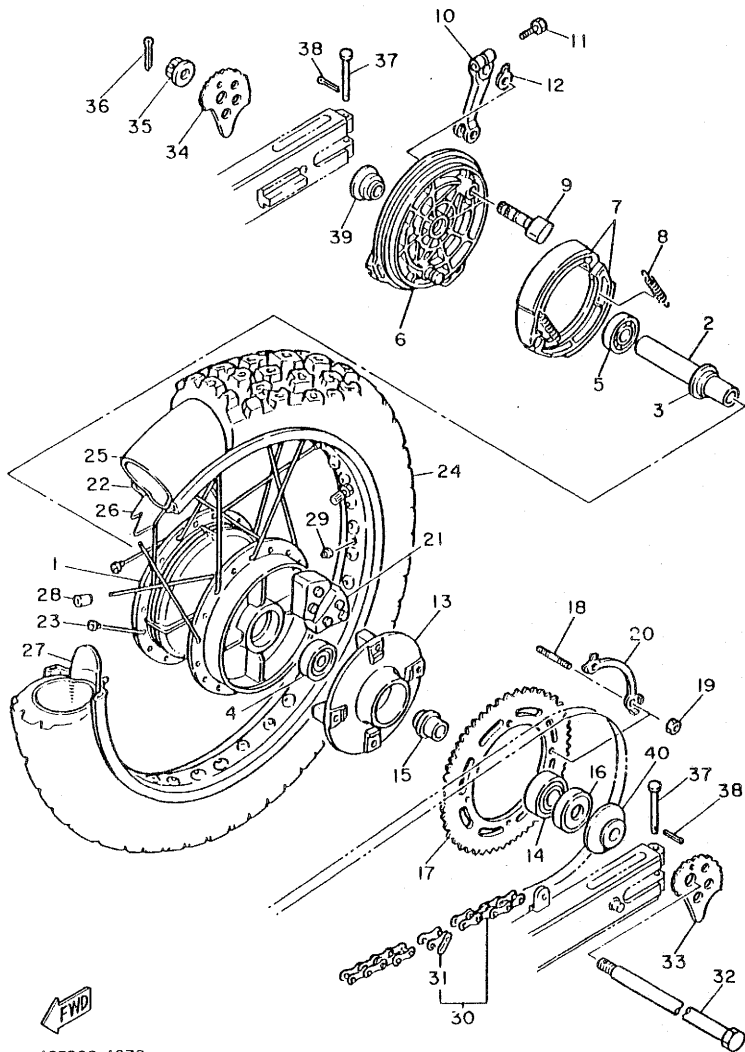
D12

FIG. 27 REAR WHEEL



43F300-4270

REF. NO.	PART NO.	DESCRIPTION	Q'TY	REMARKS
1	5Y1-25311-00-98	HUB, rear	1	low gloss black
2	5X4-25317-00	SPACER, bearing	1	
3	146-25315-00	FLANGE, spacer	1	
4	93306-20316	BEARING (B6203)	1	
5	93306-20310	BEARING (B6203RS)	1	
6	34L-25321-00-98	PLATE, brake shoe	1	low gloss black
7	5Y1-25330-00	BRAKE SHOE COMP.	2	
8	90507-20002	SPRING, tension	2	
9	5Y1-25151-00	CAMSHAFT	1	
10	34L-25355-00	LEVER, camshaft	1	
11	90101-06291	BOLT	1	
12	4G0-2533A-00	PLATE, indicator	1	
13	5Y1-25366-00-98	CLUTCH, hub	1	
14	93306-30423	BEARING	1	
15	5Y1-25377-00	COLLAR, wheel	1	
16	93102-30072	OIL SEAL	1	
17	5Y1-25439-20	SPROCKET, driven (39T)	1	
18	90116-10348	BOLT, stud	4	
19	90170-10219	NUT	4	
20	5Y1-25412-00	WASHER	2	
21	5Y1-25364-00	DAMPER	4	
22	94425-18371	RIM (2.50-18)	1	
23	34L-25304-00	SPOKE SET, rear	1	
24	94146-181E9	TIRE (4.60-18)	1	dunlop
25	94240-18098	TUBE (4.00-18)	1	dunlop
26	94340-18069	BAND, rim (4.00-18)	1	dunlop
27	2X5-25394-00	SPACER, bead	1	
28	156-25398-00	BALANCER, wheel	1	UN



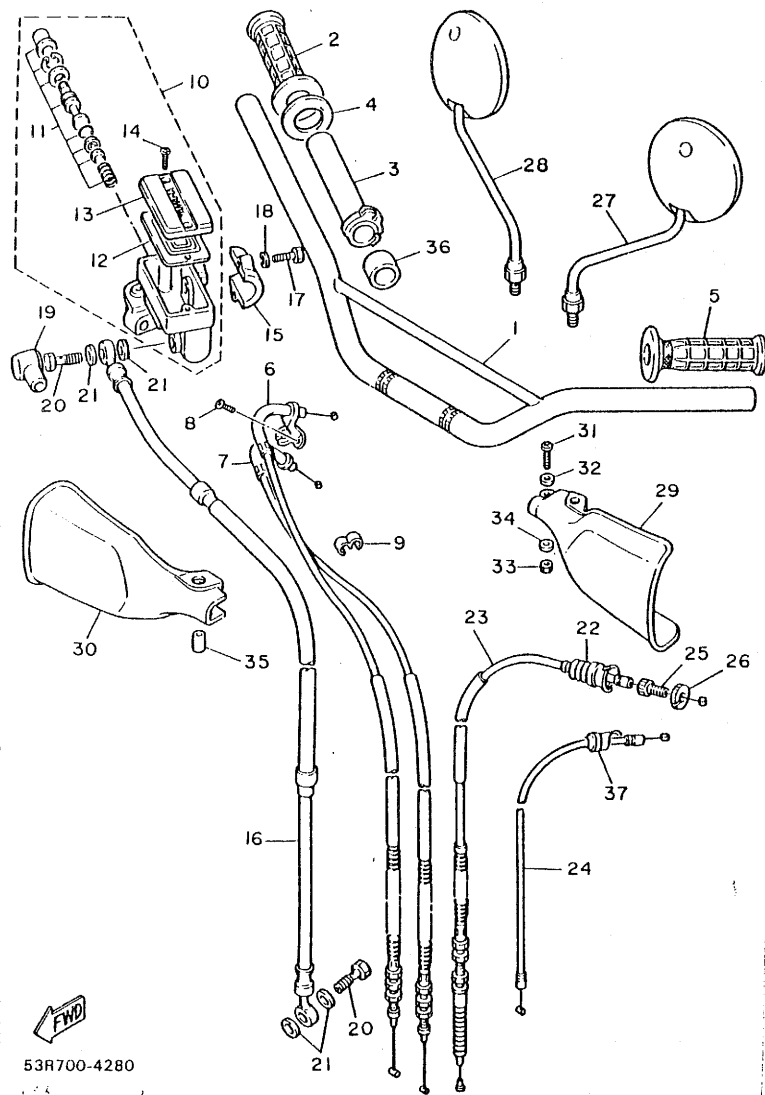
43F300-4270

FIG. 27 REAR WHEEL

REF. NO.	PART NO.	DESCRIPTION	Q'TY	REMARKS
29	90480-10068	GROMMET	1	
30	94580-50102	CHAIN	1	
31	94680-50011	.JOINT, chain	1	
32	43F-25381-00	AXLE, wheel	1	
33	3Y1-25389-00	PULLER, chain 2	1	
34	3Y1-25388-01	PULLER, chain 1	1	
35	90171-16024	NUT, castle	1	
36	91401-30030	PIN, cotter	1	
37	91701-05055	PIN, clevis	2	
38	91401-16012	PIN, cotter	2	
39	90387-175K6	COLLAR	1	
40	43F-25383-00	COLLAR, wheel	1	

D14

FIG. 28 STEERING HANDLE. CABLE

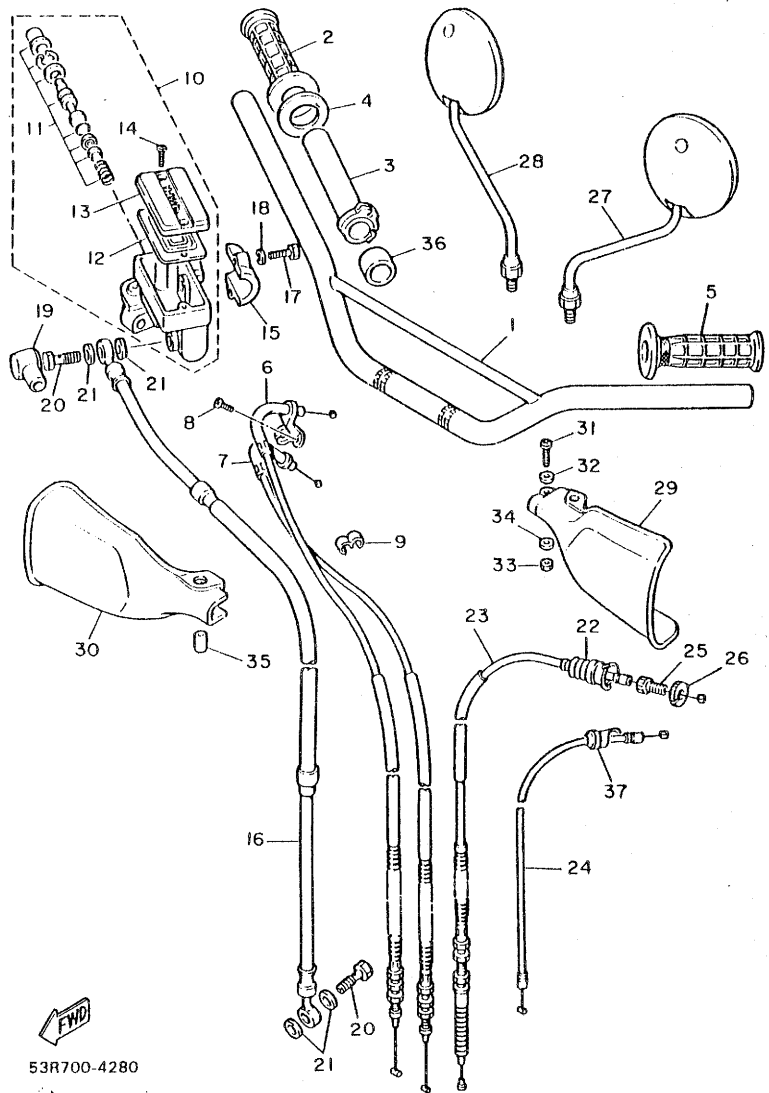


53R700-4280

REF. NO.	PART NO.	DESCRIPTION	Q'TY	REMARKS
1	34L-26111-00	HANDLEBAR	1	
2	33G-26242-00	GRIP (R.H)	1	
3	3Y1-26243-00	TUBE, throttle guide	1	
4	3Y1-26249-00	RING, leaf	1	
5	33G-26241-00	GRIP (L.H)	1	
6	53R-26311-00	CABLE, throttle 1	1	
7	53R-26312-00	CABLE, throttle 2	1	
8	98506-05008	SCREW, Pan head	1	
9	90468-15009	CLIP	1	
10	4L0-25850-02	MASTER CYLINDER ASSY	1	
11	4L0-W0041-00	.CYLINDER KIT, master	1	
12	4L0-25854-00	.DIAPHRAGM, reservoir	1	
13	4L0-25852-00	.CAP, reservoir	1	
14	98706-04012	.SCREW, flat head	2	
15	4L0-25867-00	BRACKET, master cylinder	1	
16	39E-25872-00	HOSE, brake 1	1	
17	97326-06025	BOLT	2	
18	92906-06100	WASHER, sPring	2	
19	4L0-25862-00	BOOT, master cylinder	1	
20	90401-10034	BOLT, union	2	
21	90201-10118	WASHER, Plate	4	
22	1E6-26342-00	BOOT, cable	1	
23	34L-26335-00	CABLE, clutch	1	
24	34L-26331-00	CABLE, starter 1	1	
25	90123-08046	BOLT	1	
26	90179-08148	NUT	1	
27	5Y3-26290-50	BACK MIRROR ASSY (L.H)	1	UR for S.AFRICA
	1Y1-26290-40	BACK MIRROR ASSY (R.H)	1	UR for OCEANIA

D15

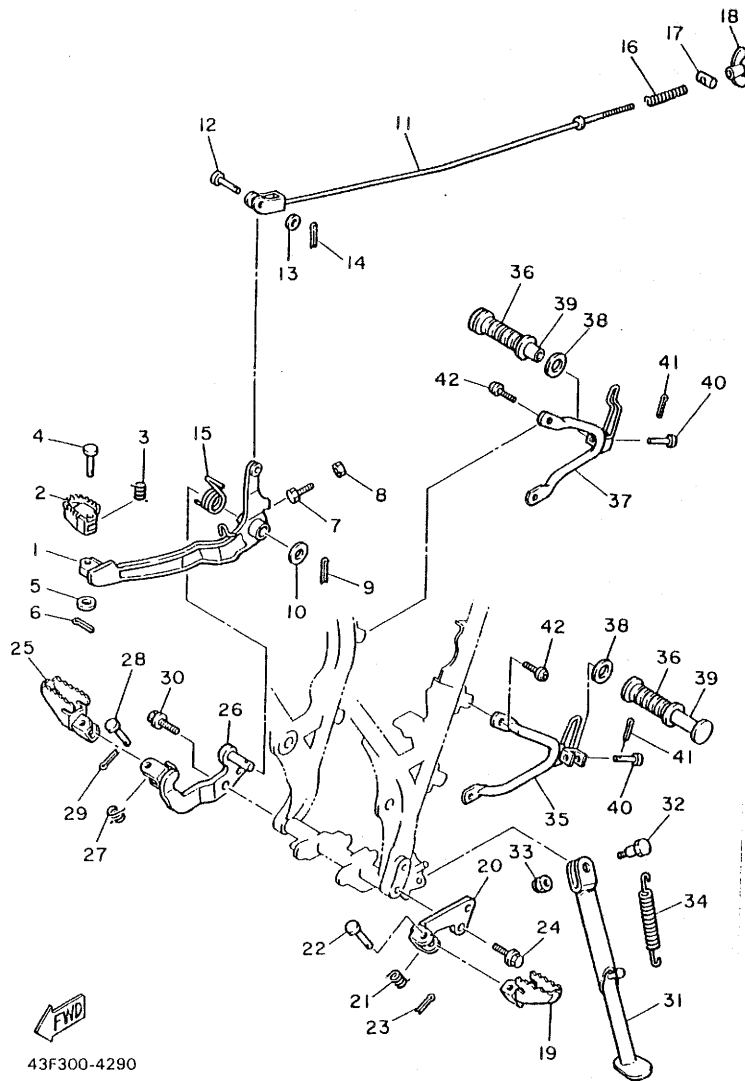
FIG. 28 STEERING HANDLE. CABLE



FWD  
53R700-4280

REF. NO.	PART NO.	DESCRIPTION	Q'TY	REMARKS
28	1Y1-26290-60	BACK MIRROR ASSY (R.H)	1	UR for S.AFRICA
	5Y4-26290-30	BACK MIRROR ASSY (L.H)	1	UR for OCEANIA
29	3Y0-26141-00	GUARD, brush 1	1	white
30	34L-26142-10	GUARD, brush 2	1	clean white
31	92501-06020	SCREW, Pan head	1	
32	90201-061A5	WASHER, Plate	1	
33	95301-06700	NUT	1	
34	92901-06200	WASHER, Plain	1	
35	90387-06500	COLLAR	1	
36	90387-22660	COLLAR	1	
37	5Y1-26339-00	BOOT	1	

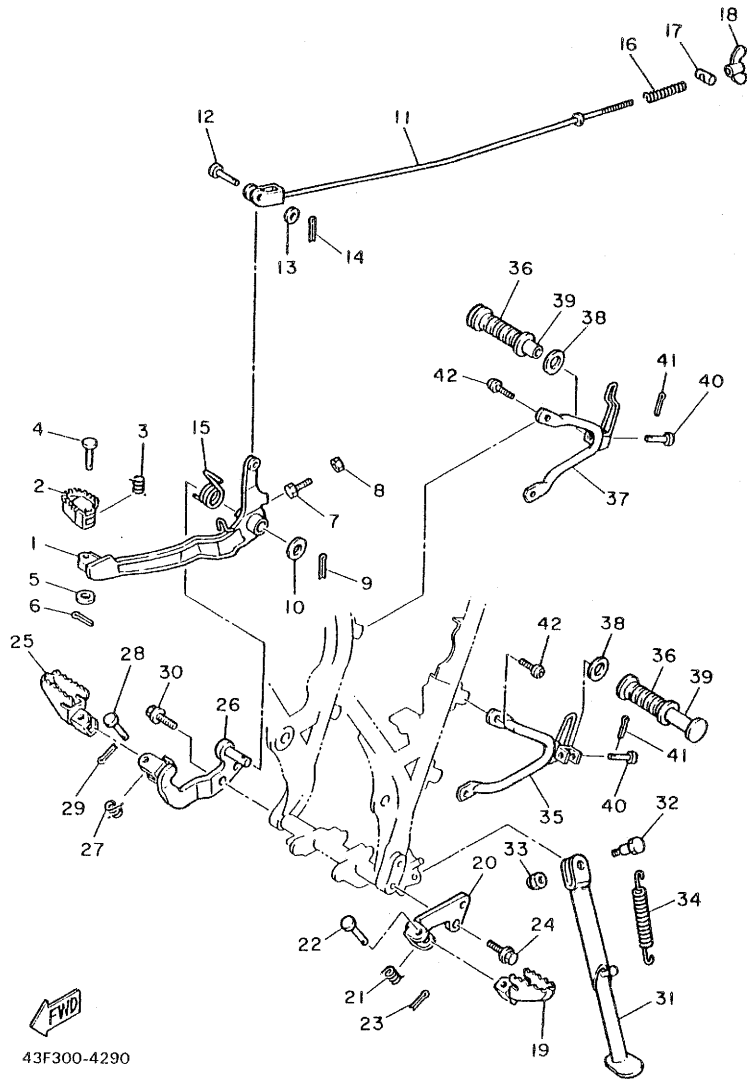
FIG. 29 STAND. FOOTREST



43F300-4290

REF. NO.	PART NO.	DESCRIPTION	Q'TY	REMARKS
1	34L-27211-01-90	PEDAL, brake	1	
2	1W2-27242-00	PEDAL, brake	1	
3	90508-14352	SPRING, torsion	1	
4	91701-06022	PIN, clevis	1	
5	90201-061A5	WASHER, Plate	1	
6	91401-20015	PIN, cotter	1	
7	90101-06288	BOLT	1	
8	95301-06600	NUT	1	
9	91401-30020	PIN, cotter	1	
10	90201-14215	WASHER, Plate	1	
11	43F-27231-00	ROD, brake	1	
12	90240-06040	PIN, clevis	1	
13	92901-06200	WASHER, Plain	1	
14	91401-20015	PIN, cotter	1	
15	90508-32660	SPRING, torsion	1	
16	90501-10245	SPRING, compression	1	
17	90249-12008	PIN	1	
18	90175-06013	NUT, wing	1	
19	5Y1-27411-00-90	FOOTREST 1	1	
20	34L-27412-00-R4	BRACKET, footrest 1	1	
21	90508-20023	SPRING, torsion	1	
22	91701-08038	PIN, clevis	1	
23	91401-25015	PIN, cotter	1	
24	95821-10025	BOLT, flange	2	
25	5Y1-27421-00-90	FOOTREST 2	1	
26	34L-27422-01-R4	BRACKET, footrest 2	1	
27	90508-20023	SPRING, torsion	1	
28	91701-08038	PIN, clevis	1	

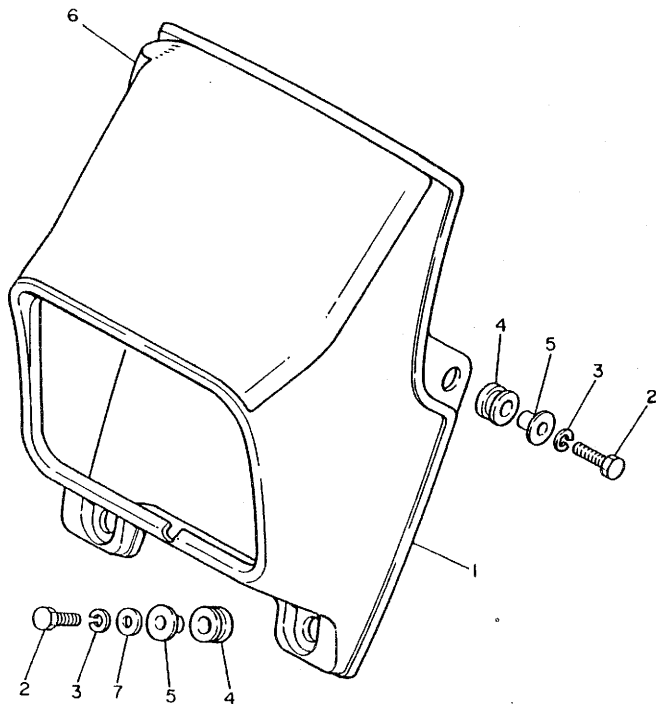
FIG. 29 STAND. FOOTREST



43F300-4290

REF. NO.	PART NO.	DESCRIPTION	Q'TY	REMARKS
29	91401-25015	PIN, cotter	1	
30	95821-10025	BOLT, flange	2	
31	34L-27311-01-R4	STAND, side	1	
32	90109-103A1	BOLT	1	
33	90185-10037	NUT, self-locking	1	
34	90507-29009	SPRING, tension	1	
35	26F-27432-00-FH	BRACKET 1	1	
36	120-27433-00	COVER, rear footrest	2	
37	50T-27442-00-FH	BRACKET 2	1	fire red
38	90201-20279	WASHER, Plate	2	
39	120-27431-00	FOOTREST, rear 1	2	
40	90240-06009	PIN, clevis	2	
41	91401-16015	PIN, cotter	2	
42	90109-08789	BOLT	4	

FIG. 30 COWLING 1



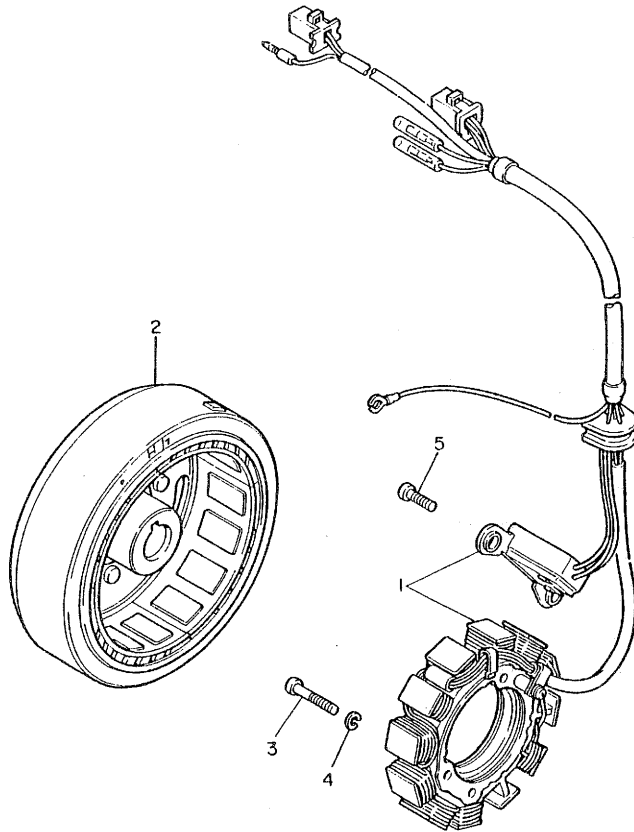
REF. NO.	PART NO.	DESCRIPTION	Q'TY	REMARKS
1	17F-28351-00-36	BODY, cowling	1	clean white
2	97306-06025	BOLT	4	
3	92906-06100	WASHER, sPring	4	
4	90480-14023	GROMMET	4	
5	90387-067F1	COLLAR	4	
6	34L-28368-10	EMBLEM	1	
7	90201-06059	WASHER, Plate	2	



34L332-3300

E5

FIG. 31 GENERATOR



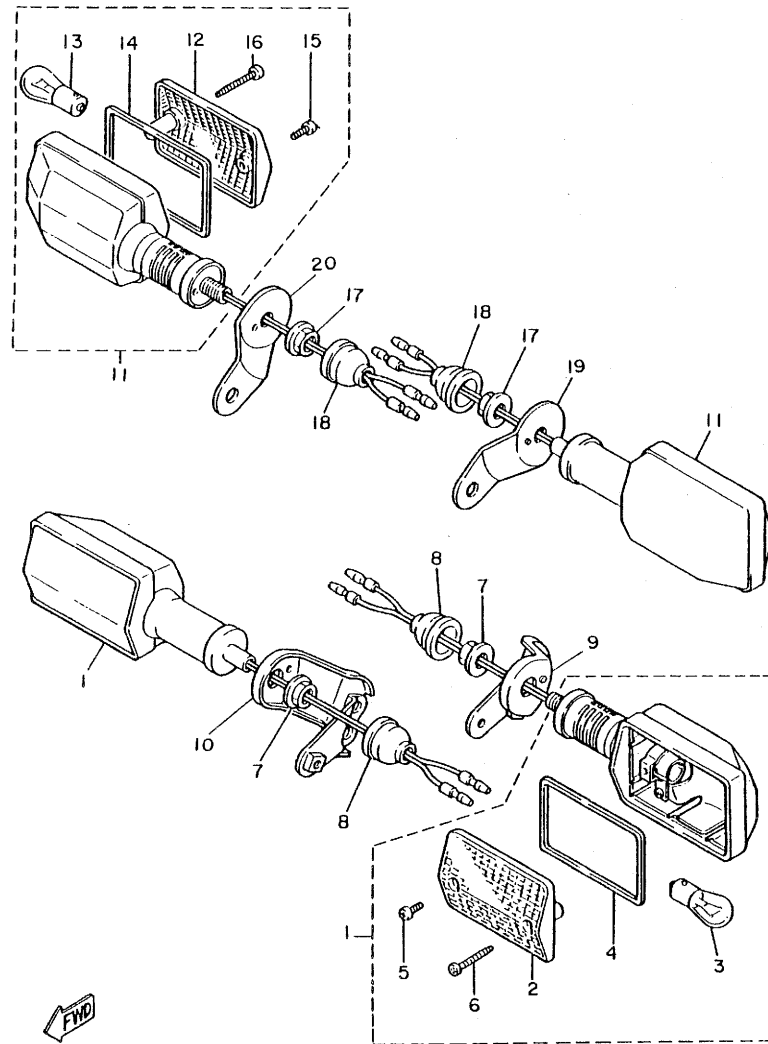
REF. NO.	PART NO.	DESCRIPTION	Q'TY	REMARKS
1	34L-81410-50	STATOR ASSY	1	
2	34L-81450-50	ROTOR ASSY	1	
3	92502-06035	SCREW, Pan head	4	
4	92902-06100	WASHER, sPring	4	
5	92501-06020	SCREW, Pan head	2	



34L332-3310

**E6**

FIG. 32 FLASHER LIGHT



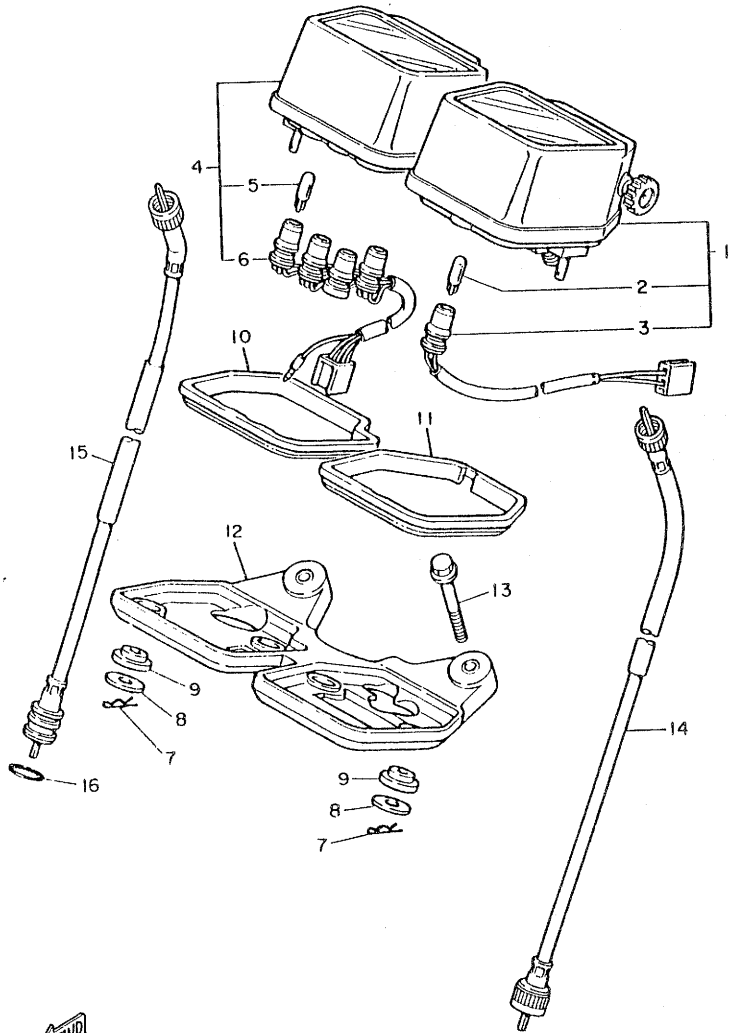
REF. NO.	PART NO.	DESCRIPTION	Q'TY	REMARKS
1	5Y1-83330-70	REAR FLASHER LIGHT ASSY 1	2	
2	5Y1-83312-00	•LENS, flasher	1	
3	256-83311-70	•BULB (12V-27W)	1	
4	5Y1-83313-00	•GASKET, flasher lens	1	
5	98503-04010	•SCREW, Pan head	1	
6	97702-40530	•SCREW, tapping	1	
7	95702-12100	NUT, flange	2	
8	10V-83365-00	CAP	2	
9	50T-83318-00	STAY, flasher 1	1	
10	50T-83328-00	STAY, flasher 2	1	
11	5Y1-83330-70	REAR FLASHER LIGHT ASSY 1	2	
12	5Y1-83312-00	•LENS, flasher	1	
13	256-83311-70	•BULB (12V-27W)	1	
14	5Y1-83313-00	•GASKET, flasher lens	1	
15	98503-04010	•SCREW, Pan head	1	
16	97702-40530	•SCREW, tapping	1	
17	95702-12100	NUT, flange	2	
18	10V-83365-00	CAP	2	
19	15A-83368-00	STAY, flasher	1	
20	15A-83369-00	STAY, flasher	1	



53R700-4320

E7

FIG. 33 METER

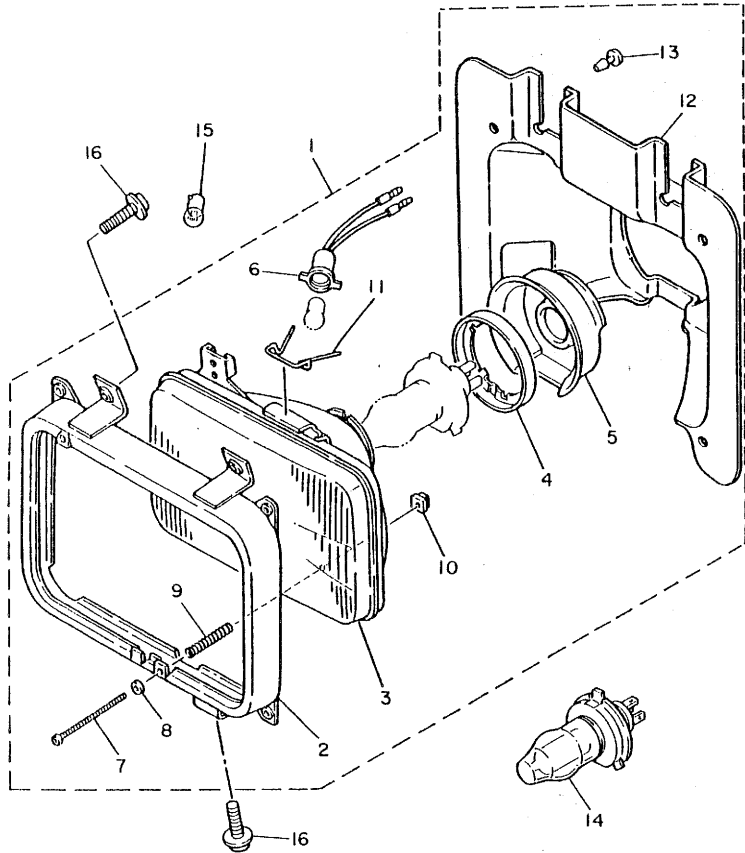


REF. NO.	PART NO.	DESCRIPTION	Q'TY	REMARKS
1	34L-83570-F0	SPEEDOMETER ASSY	1	
2	4G1-84744-00	.BULB (12V 3.4W)	1	
3	5Y1-83536-00	.SOCKET, meter	1	
4	34L-83540-00	TACHOMETER ASSY	1	
5	4G1-84744-00	.BULB (12V 3.4W)	4	
6	5Y1-83520-00	.SOCKET CORD ASSY	1	
7	437-83525-00	CLIP	4	
8	90201-05033	WASHER, Plate	4	
9	1M1-83526-00	DAMPER 2	4	
10	5Y1-83541-00	DAMPER	1	
11	5Y1-83513-00	DAMPER	1	
12	5Y1-83519-00	BRACKET, meter	1	
13	95806-06035	BOLT, flange	2	
14	34L-83550-01	SPEEDOMETER CABLE ASSY	1	
15	34L-83560-00	TACHOMETER CABLE ASSY	1	
16	93210-14104	O-RING	1	



43F300-4330

FIG. 34 HEADLIGHT

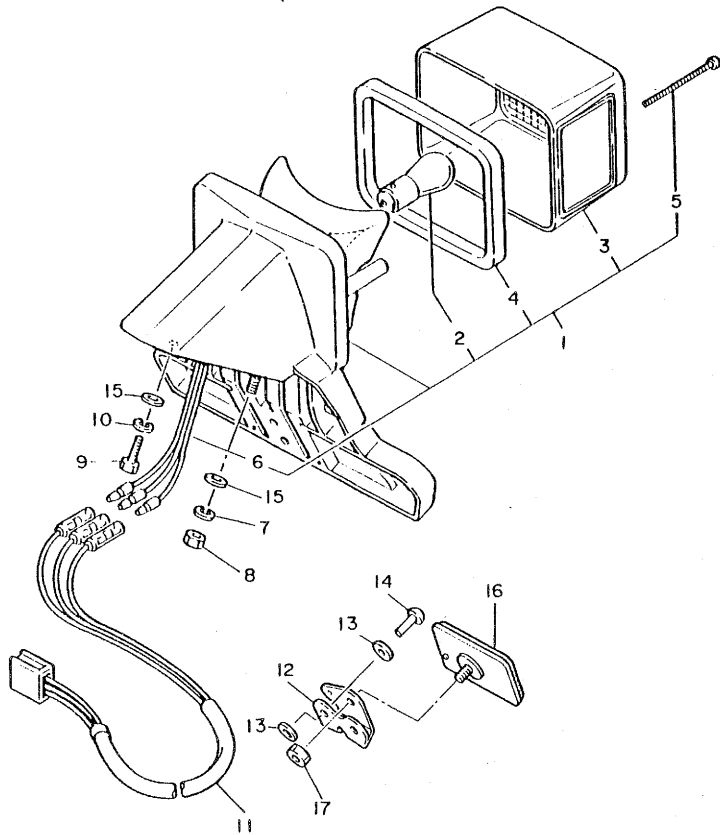


REF. NO.	PART NO.	DESCRIPTION	Q'TY	REMARKS
1	39E-84303-H0	HEADLIGHT UNIT ASSY	1	
2	10V-84115-00	•RIM, headlight	1	
3	5G8-84321-H0	•LENS, headlight	1	
4	2F9-84375-00	•FITTING PLATE, bulb	1	
5	2F9-84397-01	•COVER, socket	1	
6	457-84146-85	•SOCKET, Pilot light	1	
7	98506-05012	•SCREW, Pan head	2	
8	233-84127-60	•WASHER, sPecial	2	
9	5G2-84332-60	•SPRING, screw	2	
10	198-84334-60	•NUT, adjusting	2	
11	5G2-84324-A0	•SPRING, reflector	1	
12	10V-84196-00	•COVER, socket	1	
13	10V-84198-00	•CLIP, cover fitting	4	
14	*	BULB (12V-60/55W)	1	LM
15	*	BULB (12V 3.4W)	1	LM
16	90159-06033	SCREW, with washer	3	



39E700-3340

FIG. 35 TAILLIGHT



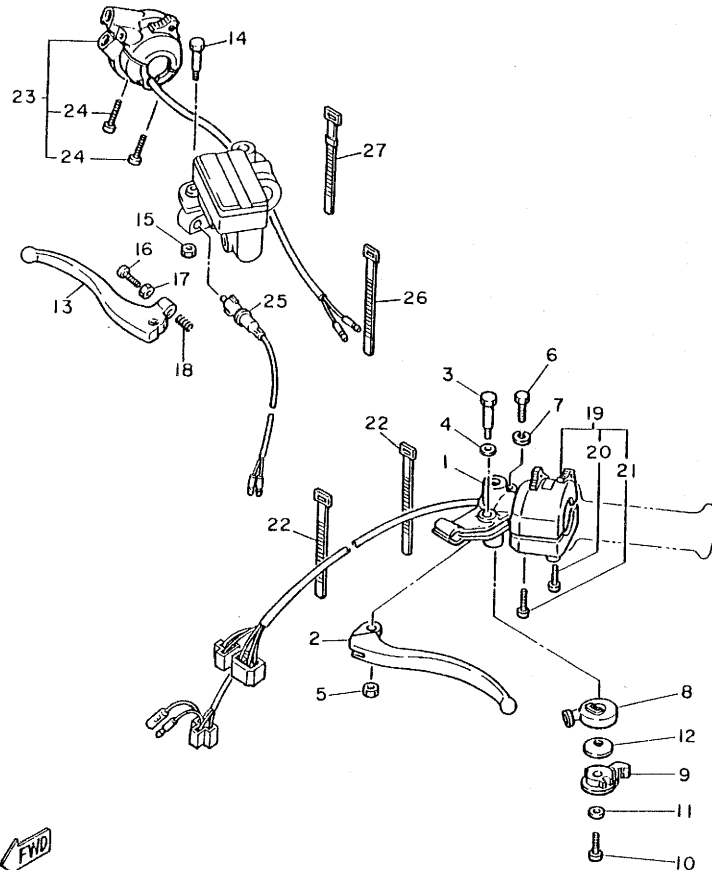
REF. NO.	PART NO.	DESCRIPTION	Q'TY	REMARKS
1	5Y7-84700-00	TAILLIGHT ASSY	1	
2	256-84714-61	.BULB (12V-27/8W)	1	
3	1M1-84521-60	.LENS, taillight	1	
4	15A-84545-00	.GASKET, lens	1	
5	3Y1-84524-00	.SCREW, lens fitting	2	
6	15A-84536-00	.SOCKET CORD ASSY	1	
7	92902-06100	WASHER, sPring	2	
8	95302-06600	NUT	2	
9	97302-06025	BOLT	1	
10	92902-06100	WASHER, sPring	1	
11	5Y1-84717-00	CORD, taillight	1	
12	33G-85132-00	BRACKET, reflector 1	1	
13	90201-044A2	WASHER, Plate	4	
14	90267-40076	RIVET, blind	2	
15	90201-06055	WASHER, Plate	3	
16	3G1-85130-00	REAR REFLECTOR ASSY	1	
17	95302-05600	NUT	1	



53R700-4350

**E10**

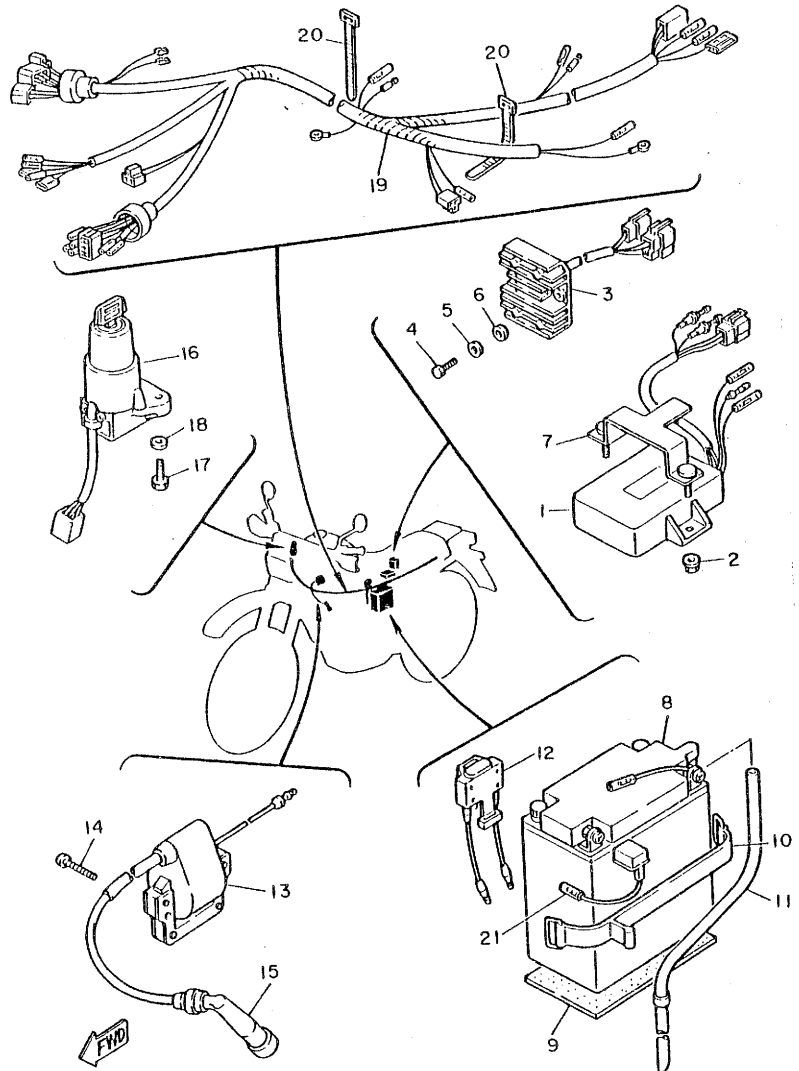
FIG. 36 HANDLE SWITCH. LEVER



REF. NO.	PART NO.	DESCRIPTION	Q'TY	REMARKS
1	5Y1-82911-01	HOLDER, lever 1	1	
2	5Y1-83912-00	LEVER 1	1	
3	90109-06410	BOLT	1	
4	90201-08083	WASHER, Plate	1	
5	95601-06100	NUT, u	1	
6	97306-06022	BOLT	1	
7	92906-06100	WASHER, sPring	1	
8	5Y1-83942-00	COVER, starter	1	
9	5Y1-83941-00	LEVER, starter	1	
10	90153-06042	SCREW, hexaBon	1	
11	92906-06200	WASHER, Plain	1	
12	90209-10131	WASHER	1	
13	43F-83922-00	LEVER 2	1	
14	90109-06774	BOLT	1	
15	95606-06100	NUT, u	1	
16	90149-06153	SCREW	1	
17	90170-06010	NUT	1	
18	90501-10312	SPRING, comPrission	1	
19	30X-83972-00	SWITCH, handle 4	1	
20	98506-05030	•SCREW, Pan head	1	
21	98506-05035	•SCREW, Pan head	1	
22	437-83936-00	BAND, switch cord	2	
23	3Y1-83976-01	SWITCH, handle 1	1	
24	90157-05027	•SCREW, Pan head	2	
25	1A0-83980-30	FRONT STOP SWITCH ASSY	1	
26	437-83936-00	BAND, switch cord	2	
27	437-83936-10	BAND, switch cord	2	

FWD  
34L332-3360

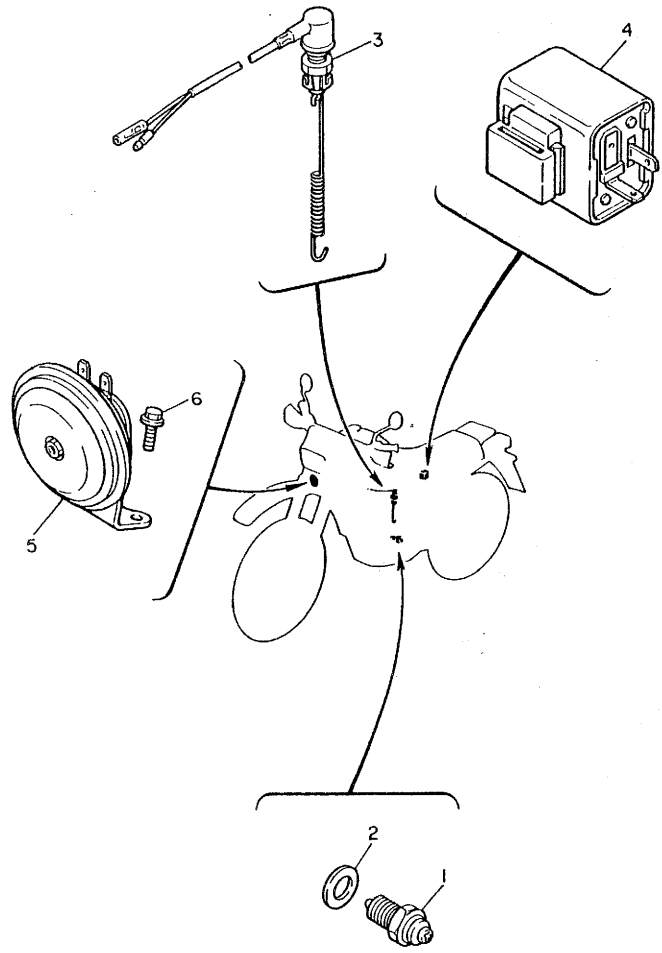
FIG. 37 ELECTRICAL 1



53R700-4370

REF. NO.	PART NO.	DESCRIPTION	Q'TY	REMARKS
1	34L-85540-50	C.D.I. UNIT ASSY	1	
2	95701-06500	NUT, flange	2	
3	34L-81960-A0	RECTIFIER & REGULATOR ASSY	1	
4	97301-06016	BOLT	2	
5	92902-06600	WASHER	2	
6	90201-06674	WASHER, Plate	2	
7	34L-8553A-00	STAY UNIT	1	
8	235-82110-79	BATTERY ASSY (12N14-3A)	1	
9	5Y1-82122-00	SEAT, battery	1	
10	4J2-82131-01	BAND, battery	1	
11	90445-08782	HOSE	1	
12	5Y1-82180-00	CIRCUIT BREAKER ASSY	1	
13	34K-82310-51	IGNITION COIL ASSY	1	
14	92502-06025	SCREW, Pan head	2	
15	371-82370-00	PLUG CAP ASSY	1	
16	5Y3-82501-80	MAIN SWITCH STEERING LOCK	1	
17	97301-06016	BOLT	2	
18	92902-06600	WASHER	2	
19	50T-82590-20	WIRE HARNESS ASSY	1	
20	437-83936-00	BAND, switch cord	2	
21	2J2-82115-01	WIRE, Plus lead	1	

FIG. 38 ELECTRICAL 2



REF. NO.	PART NO.	DESCRIPTION	Q'TY	REMARKS
1	2H7-82540-00	NEUTRAL SWITCH ASSY	1	
2	90430-10148	GASKET	1	
3	34L-82530-00	STOP SWITCH ASSY	1	
4	30X-83350-20	FLASHER RELAY ASSY	1	
5	34L-83371-20	HORN	1	
6	95801-06010	BOLT, flange	2	



34L332-3380

**E13**

NUMERICAL INDEX

PART NO.	GRID NO.	PART NO.	GRID NO.	PART NO.	GRID NO.
4L0-W0041-00	D-15	34K-12161-00	B- 7	34K-14305-00	B-13
34L-W0045-10	D-11	34K-12162-00	B- 7	5Y1-14312-45	B-12
404-W0048-30	D-11	34K-12163-00	B- 7	5Y1-14325-00	B-12
4X8-W0057-00	D-11	5Y1-12166-00	B- 7	5Y3-14341-00	B-12
34K-W1141-00	B- 5	43F-12170-00	B- 8	5H0-14342-24	B-12
5Y1-W1343-00	B- 9	34K-12176-00	B- 8	288-14343-63	B-12
50T-W2313-00	D- 6	34K-12210-00	B- 8	5Y1-14343-63	B-13
50T-W2314-00	D- 6	4X7-12213-00	B- 8	5Y1-14349-00	B-12
34L-11101-00	B- 2	34K-12231-00	B- 8	5Y1-14355-00	B-12
583-11127-00	B- 2	34K-12241-00	B- 8	5Y1-14356-00	B-13
	B- 4	34K-12283-00	B- 8	5Y1-14357-00	B-12
4H7-11133-10	B- 2	34K-12288-00	B- 3	5Y1-14358-00	B-13
34K-11145-00	B- 6	34L-12292-00	B- 3	5Y1-14384-00	B-12
34L-11166-00	B-15	583-13113-00	B- 9	5Y1-14385-00	B-12
34K-11181-00	B- 4	5Y1-13300-00	B- 9	689-14386-00	B-12
1H2-11186-00	B- 2	5Y1-13325-00	B- 9	5Y1-14396-00	B-12
5Y1-11187-00	B- 2	5Y1-13371-00	B-10	5Y1-14397-00	B-12
214-11198-01	B- 9	5Y1-13415-01	B- 9	5Y1-14398-00	B-12
34L-11310-00	B- 4	4X7-13440-90	B- 9	34L-14401-00	B-11
34K-11351-00	B- 4	34L-13443-00	B-10	34L-14412-00	B-11
34K-11400-00	B- 5	583-13447-00	B- 9	34L-1442F-00	B-11
34K-11422-00	B- 5	11H-13455-00	B- 9	34L-14425-00	B-11
34K-11454-00	B- 5	34L-13464-01	B- 9	34L-14426-00	B-11
5Y1-11496-01	B- 5	34L-13465-01	B-10	34L-14437-00	B-11
34K-11531-00	B- 5	34L-13466-01	B-10	34L-14451-00	B-11
34K-11536-00	B- 5	34L-13470-00	B-10	34K-14453-00	B-11
34K-11565-01	B- 5	34L-13472-01	B-10	34K-14454-00	B-11
34L-11610-00	B- 5	16G-13569-00	B-11	34L-14458-00	B-11
34L-11610-20	B- 5	34K-13586-00	B-11	34L-14461-00	B-11
34L-11610-40	B- 5	34K-13596-00	B-11	2J2-14468-00	B-11
34L-11631-00-YO	B- 5	5Y1-1410A-00	B-13	4H7-14484-00	C-15
34K-11633-00	B- 5	34K-14403-00	B-12	5Y1-14536-00	B-13
34L-11636-00	B- 5	5Y3-14105-00	B-12	5Y1-14556-00	B-13
34L-11638-00	B- 5	5Y1-14107-00	B-12	5Y1-14572-00	B-13
34K-11651-00	B- 5	5Y1-14115-00	B-12	34K-14611-00	B-14
34K-11681-00	B- 5	5Y1-14131-00	B-13	5Y1-14613-00	B-14
5Y1-12111-00	B- 7	5Y1-14137-00	B-13	34K-14628-00	B-14
5Y1-12113-00	B- 7	5Y1-14146-00	B-13	34L-14711-00	B-14
5Y1-12114-00	B- 7	5Y1-14148-00	B-13	34K-14714-00	B-14
4H7-12116-00	B- 7	5Y1-14149-00	B-13	34L-14728-00	B-14
2F3-12117-00	B- 7	5Y1-14159-00	B-13	34L-14752-00	B-14
1J7-12118-00	B- 7	34K-14197-00	B-13	30X-14766-00	B-14
1J7-12119-01	B- 7	5Y1-14198-00	B-12	583-14766-00	B-14
34K-12121-00	B- 7	5Y1-14203-00	B-12	5Y1-1490A-00	B-13
5Y1-12146-00	B- 7	5Y1-14216-00	B-13	34L-1490J-10	B-12
34K-12151-00	B- 7	5Y1-14286-00	B-12	5Y3-1490J-01	B-12
5Y1-12156-00	B- 7	5Y1-14293-00	B-13	34K-1490K-00	B-13
3Y1-12159-00	B- 7	34L-14301-00	B-12	34L-14905-00	B-13

NUMERICAL INDEX

PART NO.	GRID NO.	PART NO.	GRID NO.	PART NO.	GRID NO.
34L-15100-00	B-15	5Y1-17251-00	C- 8	34L-22124-00	D- 2
5Y1-15383-00	B-15	34K-17402-00	C- 8	2K6-22128-01	D- 2
34K-15411-00	C- 2	43F-17410-00	C- 8	34L-22128-00	D- 2
5Y1-15417-00	C- 2	34L-17411-00	C- 8	23X-22129-00	D- 3
5Y1-15421-01	C- 2	3Y1-17456-00	C- 8	34L-22129-00	D- 4
5Y1-15427-00	B- 9	5Y1-17461-50	C- 8	34K-22141-00	D- 3
5Y1-15431-00	C- 2	34K-17471-00	C- 8	34L-22147-00	D- 2
5Y1-15441-00	C- 2	5Y1-17800-00	B- 2	5X6-22151-10	D- 2
5Y1-15451-01	C- 2	5Y1-18101-00	C-11	34L-22153-00	D- 2
34K-15462-00	C- 2	43F-18102-00	C-11	34L-22166-00	D- 3
3Y1-1561A-02	C- 4	34L-18110-00	C-11	34L-2217A-00	D- 2
5Y1-1561G-00	C- 5	1W6-18113-00	C-11	34L-2217F-00	D- 2
5Y1-1562F-01	C- 3	34K-18120-00	C-11	22W-22178-01	C-12
5Y1-15620-00	C- 4	34K-18140-00	C-10	34L-2218A-10	D- 2
5Y1-15621-00	C- 4	5Y1-18185-00	C-10	4V4-22184-00	C-13
34K-15641-00	C- 4	5Y1-18511-00	C-10	34L-22189-00	D- 3
117-15644-00	C- 8	5Y1-18512-00	C-10	50T-22210-00-6W	D- 4
5Y1-15645-00	C- 2	5Y1-18513-00	C-10	50T-22211-00	D- 4
5Y1-15651-01	C- 4	34K-18531-00	C-10	34L-22212-00-6W	D- 4
5Y1-15660-00	C- 4	34K-18535-00	C-10	50T-22213-00	D- 4
2K7-15668-00	C- 4	5Y1-18540-00	C-10	50T-22215-00	D- 4
248-15668-00	C- 4	39E-21110-01-FH	C-12	3R4-22221-01	D- 4
5Y1-15671-00	C- 4	34L-21170-00	C-14	3Y1-22223-00	D- 4
214-15674-00	C- 4	5H0-21308-00	D-10	50T-22224-00	D- 4
168-15676-00	C- 4	34L-21315-00	C-12	34L-22226-00	D- 4
214-15686-00	C- 4	34L-21316-00-FH	C-12	34L-22311-01	D- 3
34K-16111-00	C- 6	5Y1-21441-00	C-12	50T-22401-00	D- 4
34K-16150-00	C- 6	34L-21471-00	C-12	50T-22409-00	D- 4
3Y1-16154-00	C- 6	34L-21485-00	C-12	50T-22493-00	D- 4
5Y1-16321-00	C- 6	34L-21486-00	C-12	50T-22497-00	D- 4
30X-16325-00	C- 6	34L-21510-30	C-14	50T-23110-00	D- 6
5Y1-16331-00	C- 6	34L-21575-10	C-14	34L-23111-00	D- 6
5Y1-16351-00	C- 6	34L-21611-20	C-14		D- 7
34K-16356-00	C- 6	34L-21621-00	B-11	34L-23114-00	D- 6
34K-16357-00	C- 7	34L-21685-00	C-14		D- 7
30X-16358-00	C- 6	34L-21711-00-2X	C-15	50T-23118-00	D- 6
34K-16371-00	C- 6	34L-21721-00-2X	C-15		D- 7
5Y1-16381-00	C- 6	2J5-21732-00	C-12	1E7-23119-00	D- 6
5Y1-16383-00	C- 6	34L-2174A-00	C-15		D- 7
214-16389-00	C- 6	34L-21750-02	C-15	34L-23130-00-38	D- 6
34K-17121-01	C- 8	34L-21756-01	C-15	34L-23135-00	D- 6
5Y1-17131-00	C- 8	34L-2176E-01	C-12		D- 7
34K-17141-00	C- 8	34L-21761-01	C-15	34L-23140-00-38	D- 6
5Y1-17151-01	C- 8	34L-2177G-00	C-15	34L-23141-00	D- 6
34L-17211-00	C- 8	34L-21781-10	C-15		D- 7
5Y1-17221-01	C- 8	43F-22110-01	D- 2	34L-23142-00	D- 6
34K-17231-00	C- 8	34L-22117-00	D- 3		D- 7
34K-17241-00	C- 8	34L-22123-00	D- 2	34L-23144-00	D- 6

NUMERICAL INDEX

PART NO.	GRID NO.	PART NO.	GRID NO.
34L-23144-00	D-7	34L-24240-10	D-9
34L-23145-00	D-6	34L-24311-00	D-9
	D-7	34L-24500-01	D-9
3H3-23147-00	D-6	360-24512-00	B-12
	D-7	4X8-24512-00	D-9
34L-23147-00	D-6	4X8-24533-00	D-9
	D-7	34L-24610-00	D-9
34L-23151-00	D-6	34L-24731-11	D-10
	D-7	34L-24734-00	D-10
34L-23153-00	D-6	34L-24770-12	D-10
	D-7	34L-24830-01-98	D-10
34L-23157-00	D-6	34L-25104-00	D-11
	D-7	34L-25111-00-98	D-11
34L-23166-00	D-6	322-25118-00	D-11
	D-7	5Y1-25151-00	D-13
34L-23167-00	D-7	34L-25181-00	D-11
34L-2317E-00	D-5	34L-25190-00	D-11
50T-23170-00	D-6	34L-25304-00	D-13
	D-7	5Y1-25311-00-98	D-13
50T-23171-00	D-6	146-25315-00	D-13
	D-7	5X4-25317-00	D-13
3H7-23181-00	D-6	34L-25321-00-98	D-13
	D-7	460-2533A-00	D-13
34L-23181-00	D-8	5Y1-25330-00	D-13
34L-23190-00	D-6	34L-25355-00	D-13
	D-7	5Y1-25364-00	D-13
5K7-23190-00	D-6	5Y1-25366-00-98	D-13
	D-7	5Y1-25377-00	D-13
34L-23191-10	D-7	43F-25381-00	D-14
34L-23192-00	D-7	43F-25383-00	D-14
3Y1-2331E-00	D-5	3Y1-25388-01	D-14
34L-2331E-00	D-5	3Y1-25389-00	D-14
34L-23318-00	D-5	2X5-25394-00	D-13
39E-23340-00-39	D-7	156-25398-00	D-11
34L-23351-00	D-6		D-13
34L-23389-00	D-5	5Y1-25412-00	D-13
1W1-23416-00	D-5	5Y1-25439-20	D-13
5A8-23434-00	D-5	34L-25810-10	D-11
34L-23435-00-98	D-5	11U-25827-10	D-11
1E6-23441-00	D-5	34L-25831-00	D-11
3Y6-23442-00-98	D-5	4L0-25850-02	D-15
34L-23489-00	D-7	4L0-25852-00	D-15
34L-24110-00-02	D-9	4L0-25854-00	D-15
34L-24161-10	D-9	4L0-25862-00	D-15
156-24181-00	D-9	4L0-25867-00	D-15
34L-24182-00	D-9	39E-25872-00	D-15
34L-24183-00	D-9	4X8-25917-00	D-11
34L-24184-00	D-9	34L-25919-00	D-11

PART NO.	GRID NO.	PART NO.	GRID NO.
5R2-25937-00	D-11	34L-26111-00	D-15
	D-15	3Y0-26141-00	E-2
	E-2	34L-26142-10	E-2
	D-15	33G-26241-00	D-15
	D-15	33G-26242-00	D-15
	D-15	3Y1-26243-00	D-15
	D-15	3Y1-26249-00	D-15
	D-15	1Y1-26290-40	D-15
	E-2	1Y1-26290-60	E-2
	D-15	5Y3-26290-50	D-15
	E-2	5Y4-26290-30	E-2
	D-15	53R-26311-00	D-15
	D-15	53R-26312-00	D-15
	D-15	34L-26331-00	D-15
	D-15	34L-26335-00	D-15
	E-2	5Y1-26339-00	E-2
	D-15	1E6-26342-00	D-15
	C-12	4N0-27114-00	C-12
	E-3	34L-27211-01-90	E-3
	E-3	43F-27231-00	E-3
	E-3	1W2-27242-00	E-3
	E-4	34L-27311-01-R4	E-4
	E-3	5Y1-27411-00-90	E-3
	E-3	34L-27412-00-R4	E-3
	E-3	5Y1-27421-00-90	E-3
	E-3	34L-27422-01-R4	E-3
	E-4	120-27431-00	E-4
	E-4	26F-27432-00-FH	E-4
	E-4	120-27433-00	E-4
	E-4	50T-27442-00-FH	E-4
	C-15	43F-28100-00	C-15
	C-14	34L-28185-00	C-14
	E-5	17F-28351-00-36	E-5
	E-5	34L-28368-10	E-5
	E-6	34L-81410-50	E-6
	E-12	34L-81450-50	E-12
	E-12	34L-81960-A0	E-12
	E-12	235-82110-79	E-12
	E-12	2J2-82115-01	E-12
	E-12	5Y1-82122-00	E-12
	E-12	4J2-82131-01	E-12
	E-12	5Y1-82180-00	E-12
	E-12	34K-82310-51	E-12
	E-12	371-82370-00	E-12
	E-12	5Y3-82501-80	E-12
	E-13	34L-82530-00	E-13
	E-13	2H7-82540-00	E-13

PART NO.	GRID NO.	PART NO.	GRID NO.
50T-82590-20	E-12	12R-82591-00	D-9
	D-9	5Y1-82911-01	E-11
	E-11	256-83311-70	E-7
	E-7	5Y1-83312-00	E-7
	E-7	5Y1-83313-00	E-7
	E-7	50T-83318-00	E-7
	E-7	50T-83328-00	E-7
	E-7	5Y1-83330-00	E-7
	E-13	30X-83350-20	E-13
	E-7	10V-83365-00	E-7
	E-7	15A-83368-00	E-7
	E-7	15A-83369-00	E-7
	E-13	34L-83371-20	E-13
	E-8	5Y1-83513-00	E-8
	E-8	5Y1-83519-00	E-8
	E-8	5Y1-83520-00	E-8
	E-8	437-83525-00	E-8
	E-8	1M1-83526-00	E-8
	E-8	5Y1-83536-00	E-8
	E-8	34L-83540-00	E-8
	E-8	5Y1-83541-00	E-8
	E-8	34L-83550-01	E-8
	E-8	34L-83560-00	E-8
	E-8	34L-83570-F0	E-8
	E-11	5Y1-83912-00	E-11
	E-11	43F-83922-00	E-11
	E-11	437-83936-00	E-11
	E-12		E-12
	E-11	437-83936-10	E-11
	E-11	5Y1-83941-00	E-11
	E-11	5Y1-83942-00	E-11
	E-11	30X-83972-00	E-11
	E-11	3Y1-83976-01	E-11
	E-11	1A0-83980-30	E-11
	E-9	10V-84115-00	E-9
	E-9	233-84127-60	E-9
	E-9	457-84146-85	E-9
	E-9	10V-84196-00	E-9
	E-9	10V-84198-00	E-9
	E-9	39E-84303-H0	E-9
	E-9	568-84321-H0	E-9
	E-9	5G2-84324-A0	E-9
	E-9	5G2-84332-60	E-9
	E-9	198-84334-60	E-9
	E-9	2F9-84375-00	E-9
	E-9	2F9-84397-01	E-9
	E-10	1M1-84521-60	E-10

NUMERICAL INDEX

PART NO.	GRID NO.	PART NO.	GRID NO.
3Y1-84524-00	E-10	90159-06033	E-9
15A-84536-00	E-10	90159-06078	C-10
15A-84545-00	E-10	90164-06017	B-14
5Y7-84700-00	E-10	90170-06010	E-11
256-84714-61	E-10	90170-06128	B-7
5Y1-84717-00	E-10	90170-10219	D-13
4G1-84744-00	E-8	90170-16326	B-6
3G1-85130-00	E-10	90170-20274	C-6
33G-85132-00	E-10	90170-20327	C-6
34L-8553A-00	E-12	90171-14020	D-11
34L-85540-50	E-12	90171-16024	D-14
90101-06288	E-3	90175-06013	E-3
90101-06291	D-13	90176-08026	B-4
90101-10308	D-12	90179-06306	B-14
90101-12498	D-4	90179-08148	D-15
90105-07087	B-8	90179-10201	B-4
90105-08213	B-4	90179-10279	B-4
90105-08214	B-4	90179-14317	B-5
90105-10286	C-12	90179-25033	D-5
90105-14102	D-5	90185-10037	E-4
90109-06410	E-11	90185-10060	C-12
90109-06418	B-3	90185-10120	D-3
90109-06419	B-9	90185-12080	D-4
90109-06757	D-11	90185-12119	D-2
90109-06774	E-11	90185-14116	D-3
90109-08705	C-13	90201-04442	E-10
90109-08789	E-4	90201-05033	E-8
90109-103A1	E-4	90201-060H4	D-9
90109-10759	D-3	90201-06055	E-10
90109-10760	D-3	90201-06059	E-5
90109-120A3	D-2	90201-061A5	B-8
90116-10087	B-15		C-5
90116-10263	B-15		E-2
90116-10348	D-13		E-3
90116-10378	B-2	90201-062A8	D-3
90119-06056	D-10	90201-06336	C-14
90119-06063	C-14	90201-06674	E-12
90119-06101	D-2	90201-06765	C-12
90123-08046	D-15	90201-08083	E-11
90149-05110	B-9	90201-08100	C-14
90149-06011	D-9	90201-08113	C-13
90149-06153	E-11	90201-08326	B-14
90149-08067	C-6	90201-08609	B-4
90151-06017	C-10	90201-087G0	B-4
90152-06010	C-4	90201-08730	C-15
90153-06042	E-11	90201-100E9	D-3
90157-05027	E-11	90201-10118	D-15
90159-06016	C-6	90201-10124	B-4

NUMERICAL INDEX

PART NO.	GRID NO.	PART NO.	GRID NO.	PART NO.	GRID NO.
90201-10135	C-5	90340-36078	C-2	90480-12053	B-10
90201-10141	D-5	90380-14095	D-2	90480-13197	B-10
90201-10430	D-3	90380-14130	D-4		
90201-10590	B-4	90380-22111	D-2	90480-13383	C-15
90201-120A5	D-2	90386-20120	D-2	90480-14023	E-5
90201-12362	D-4	90386-20123	D-3	90480-14229	C-12
90201-12474	C-11	90387-060A7	B-10	90480-15235	B-10
90201-13409	C-13			90480-16233	B-10
90201-140G9	D-2	90387-063F7	C-12	90501-05378	B-9
90201-14215	E-3	90387-06500	C-15	90501-10245	E-3
90201-14226	B-5			90501-10312	E-11
90201-15238	D-3	90387-067F1	C-14	90501-12081	C-4
90201-15701	C-4			90501-16107	C-4
90201-15785	D-11	90387-085E1	C-13	90501-22721	B-5
90201-17327	C-7	90387-121H1	D-2	90501-26148	C-6
90201-20276	C-4	90387-122J6	D-3	90507-20002	D-13
		90387-152J3	D-11	90507-29009	E-4
90201-20279	E-4	90387-16782	B-15	90508-14352	E-3
90201-20685	C-4	90387-175K6	D-14	90508-14524	C-5
90201-244A8	D-2	90387-17783	B-15	90508-14526	C-7
90201-251F6	D-3	90387-22660	E-2	90508-18551	B-3
90201-301F4	B-5	90387-440G3	D-2	90508-20023	E-3
90202-06010	D-9	90401-10034	D-15	90508-29527	C-10
90206-06060	B-14	90430-05126	B-9	90508-29629	C-11
90206-12075	B-7	90430-06014	B-3	90508-32529	C-4
90209-06174	B-10	90430-06166	B-9	90508-32660	E-3
90209-06187	C-14	90430-08119	C-6	90560-15240	D-11
90209-10131	E-11			91316-06012	B-10
90209-22191	C-8	90430-08178	B-4		
90209-34254	B-5			91316-06016	D-5
90215-16230	B-6	90430-10148	B-15		
90215-20197	C-6	90445-08782	E-13	91316-06018	C-2
90215-20231	C-6	90445-11753	E-12	91316-06020	B-2
90240-06009	E-4	90460-46206	C-15		
90240-06040	E-3	90460-51059	B-11	91316-06025	B-11
90240-14106	E-4	90462-10107	B-11		
90243-06016	E-3	90462-16102	C-2	91316-06030	B-8
90249-12008	E-3	90464-20064	C-2		
90267-32070	C-14	90465-14192	B-10	91316-06030	B-7
90267-32072	D-3	90467-09006	D-5		
90267-40076	E-10	90467-10008	D-9	92901-04100	B-15
90267-48079	C-12	90467-10039	C-15	92901-05600	C-2
90280-05013	B-5	90467-14015	B-11	92901-06100	B-9
90282-05013	B-6	90467-14015	B-15		
90282-07042	C-6	90468-12006	D-5	91316-06035	C-2
90336-18038	C-4	90468-15009	D-5	91316-06040	B-2
90340-14079	B-2	90480-01141	D-15		
		90480-01141	C-15	91316-06040	C-2
		90480-10068	D-11	91316-06045	B-15
			D-14	91316-06050	B-2
					C-2

NUMERICAL INDEX

PART NO.	GRID NO.	PART NO.	GRID NO.	PART NO.	GRID NO.
91316-06055	B-2	92901-08100	D-8	93210-19522	B-2
91316-06060	B-15	92901-08600	D-8	93210-21190	C-15
91316-06080	B-9	92901-10100	C-12	93210-22298	B-9
91316-06125	B-2			93210-32172	B-2
91401-16012	D-14			93210-36510	C-2
91401-16015	E-4	92901-10200	D-12	93210-36549	B-11
91401-20015	E-3	92901-14600	D-4	93210-62523	B-2
91401-25015	E-3	92902-03200	C-14	93210-64297	B-9
		92902-06100	C-14	93210-98473	B-4
91401-30020	E-3			93306-00426	C-8
91401-30025	D-4			93306-00431	C-8
91401-30030	D-11	92902-06600	E-12	93306-20205	D-11
		92906-05600	B-11	93306-20310	D-13
91701-05055	D-14	92906-06100	B-10	93306-20316	D-13
91701-06022	E-3			93306-30423	D-13
91701-08038	E-3			93306-30525	B-5
91810-03014	B-2			93306-30535	C-8
91810-05018	B-4			93306-30540	C-8
91810-18016	B-4			93306-30541	B-6
		92906-06200	B-15	93306-30702	B-5
		92906-06600	B-2	93310-634K2	B-5
91830-22016	C-2	92906-08100	C-12	93315-11720	C-6
		93101-14092	B-15	93315-31732	D-2
91830-24016	B-14	93101-25106	B-6	93316-00503	C-10
92501-06008	C-2	93102-07261	B-2	93317-11020	C-6
92501-06012	C-12	93102-10207	C-4	93317-32231	D-2
		93102-11262	B-2	93332-00008	D-5
92501-06014	B-9	93102-12106	B-3	93332-00023	D-5
92501-06020	C-14			93410-10025	C-5
		93102-17148	C-6	93410-11002	B-9
		93102-20108	C-4	93410-15005	C-4
92502-06025	E-12	93102-20281	D-11	93410-20009	C-4
92502-06035	B-11	93102-25226	C-8		
92506-06012	D-3	93102-30072	D-13	93410-20038	C-8
92701-06012	B-2	93106-22019	D-2	93430-09035	C-4
92701-06015	B-15	93108-35004	D-2	93430-10016	C-11
92706-06030	D-10	93210-07135	D-2	93440-12052	B-2
92901-04100	B-2			93440-25019	C-8
92901-05600	B-12			93440-48079	D-4
92901-06100	D-5	93210-08521	B-15	93450-24028	B-5
		93210-09350	B-7	93503-08007	B-9
		93210-10197	B-9	93507-32009	C-4
		93210-13361	B-9	93515-32029	C-7
				93602-11144	D-4
		93210-14104	C-2	93604-10011	C-10
		93210-14369	E-8	93604-21193	D-4
92901-06200	D-7			93604-26132	D-4
		93210-14579	B-2	93605-10090	B-5
		93210-15171	B-10		

NUMERICAL INDEX

PART NO.	GRID NO.	PART NO.	GRID NO.	PART NO.	GRID NO.
93608-33046	C-11	95821-10025	E- 4		
93700-06004	D- 3	95822-08012	C-15		
93700-06005	D- 3	95826-08035	D- 5		
94130-211E8	D-11	95826-08040	D- 5		
94146-181E9	D-13	97301-06016	C-15		
94227-21101	D-11		E-12		
94240-18098	D-13	97302-06025	E-10		
94327-21071	D-11	97306-06020	B-10		
94340-18069	D-13	97306-06022	E-11		
94416-21367	D-11	97306-06025	C-12		
94425-18371	D-13		E- 5		
94580-50102	D-14	97306-08016	C-12		
94590-27126	B- 8	97311-08030	C- 4		
94680-50011	D-14	97311-10080	C-12		
94701-00262	B- 2	97321-06014	C- 8		
94701-00263	B- 2	97321-06016	B- 8		
95301-05600	D- 5		C- 4		
95301-06600	C- 6	97322-06010	C- 9		
	D- 7	97326-06020	C-11		
	E- 3	97326-06025	D-15		
95301-06700	E- 2	97702-40530	E- 7		
95301-10700	D- 5	97706-40506	B-11		
95302-05600	E-10	98501-03008	D- 9		
95302-06600	C-14	98501-04014	B-12		
	E-10	98501-05010	B-12		
95302-08600	C-14	98501-05020	D- 5		
95311-06700	C- 5	98503-04010	B-13		
95311-08600	D- 8		E- 7		
95601-06100	E-11	98506-05008	D-15		
95606-06100	E-11	98506-05012	E- 9		
95611-06620	B- 2	98506-05016	B-11		
95701-06500	D- 2	98506-05030	E-11		
	E-12	98506-05035	E-11		
95702-12100	E- 7	98706-04012	D-15		
95801-06010	E-13	98901-04006	B-13		
95801-06012	B-11	98906-06010	B-14		
	D- 9				
95801-06050	D- 2				
95801-08012	C-15				
95806-06016	D-10				
95806-06030	C-14				
95806-06035	E- 8				
95806-08030	C-14				
95811-08012	B-14				
95811-10100	C-12				
95816-08045	B-14				
95821-08020	B-14				
95821-10025	E- 3				

## PARTS NAME INDEX

DESCRIPTION	GRID NO.	DESCRIPTION	GRID NO.	DESCRIPTION	GRID NO.
ABSORBER 3	B- 2	BOLT	B- 3	BOLT, stud	B- 2
*	B- 4	*	B- 4	*	B-15
AIR CLEANER CASE ASSY	B-11	*	B- 7	*	D-13
AIR VALVE COMP.	D- 6	*	B- 8	BOLT, union	D-15
*	D- 7	*	B- 9	BOLT, washer based	B- 4
ARM, relay	D- 2	*	B-10	*	B- 8
ARM, valve rocker	B- 7	*	B-11	*	C-12
ARM, valve rocker 2	B- 7	*	B-15	*	D- 5
ARM, valve rocker 3	B- 7	*	C- 2	BOLT, with washer	C-14
ARM, valve rocker 4	B- 7	*	C- 4	*	D- 2
AXLE, main(12T)	C- 8	*	C- 8	*	D-10
AXLE, wheel	D-11	*	C- 9	BOOT	D- 7
*	D-14	*	C-11	*	E- 2
BACK MIRROR ASSY (L.H)	D-15	*	C-12	BOOT 2	D-11
*	E- 2	*	C-13	BOOT, cable	D-15
BACK MIRROR ASSY (R.H)	D-15	*	C-15	BOOT, caliper	D-11
*	E- 2	*	D- 2	BOOT, master cylinder	D-15
BALANCER, wheel	D-11	*	D- 3	BOOT, rubber	D- 3
*	D-13	*	D- 4	BOSS, buffer	B- 5
BALL	B- 9	*	D- 5	BOSS, clutch	C- 6
*	C- 4	*	D-11	BOSS, kick crank	C- 4
*	C- 7	*	D-12	BOX COMP.	C-14
BAND	D- 7	*	D-13	BOX, battery	C-15
*	D- 9	*	D-15	BRACKET 1	E- 4
BAND, battery	E-12	*	E- 3	BRACKET 2	E- 4
BAND, rim (2.75-21)	D-11	*	E- 4	BRACKET, decompression	B- 8
BAND, rim (4.00-18)	D-13	*	E- 5	BRACKET, footrest 1	E- 3
BAND, seat	D-10	*	E-10	BRACKET, footrest 2	E- 3
BAND, switch cord	E-11	*	E-11	BRACKET, license	C-14
*	E-12	*	E-12	BRACKET, master cylinder	D-15
BAR, shift fork guide 1	C-10	BOLT, cap	D- 6	BRACKET, meter	E- 8
BAR, shift fork guide 2	C-10	*	D- 7	BRACKET, reflector 1	E-10
BATTERY ASSY (12N14-3A)	E-12	BOLT, flange	B-11	BRACKET, stop switch	C-12
BEARING	B- 6	*	B-14	BRAKE PAD KIT, front	D-11
*	C- 8	*	C-12	BRAKE SHOE COMP.	D-13
*	D- 5	*	C-14	BREED SCREW KIT	D-11
*	D-13	*	C-15	BULB (12V 3.4W)	E- 8
BEARING (B6202)	D-11	*	D- 2	*	E- 9
BEARING (B6203)	D-13	*	D- 5	BULB (12V-27/8W)	E-10
BEARING (B6203RS)	D-13	*	D- 9	BULB (12V-27W)	E- 7
BEARING (B6305)	B- 5	*	D-10	BULB (12V-60/55W)	E- 9
BEARING (B6307)	B- 5	*	E- 3	BUMP, stop	D- 4
BEARING, cylindrical	B- 5	*	E- 4	BUSH	C-13
*	C- 6	*	E- 8	*	D- 2
*	C-10	*	E-13	*	D- 3
*	D- 2	BOLT, hexagon socket head	D- 6	BUSH 1	D- 2
BODY, cowling	E- 5	*	D- 7	BUSH 2	D- 2
BOLT	B- 2	*	D- 8	BUSH, shock absorber lower	D- 4

## PARTS NAME INDEX

DESCRIPTION	GRID NO.	DESCRIPTION	GRID NO.	DESCRIPTION	GRID NO.
BUSH, solid	D- 2	COLLAR	C-12	DAMPER	E- 8
*	D- 4	*	C-13	DAMPER SUB ASSY	D- 4
C.D.I. UNIT ASSY	E-12	*	C-14	DAMPER 1	B-11
CABLE CONNECTOR SET	B-12	*	C-15	DAMPER 2	B-11
CABLE, clutch	D-15	*	D- 2	*	C-12
CABLE, decompression	B- 3	*	D- 3	*	E- 8
CABLE, starter 1	D-15	*	D-11	DAMPER, locating 1	D- 9
CABLE, throttle 1	D-15	*	D-14	DAMPER, locating 2	D- 9
CABLE, throttle 2	D-15	*	E- 2	DAMPER, locating 3	D- 9
CALIPER ASSY (LEFT)	D-11	*	E- 5	DAMPER, locating 4	D- 9
CAM, decompression	B- 3	COLLAR, wheel	D-13	DAMPER, rubber 1	C-12
CAMSHAFT	D-13	*	D-14	DECOMP. LEVER ASSY	C- 4
CAMSHAFT ASSY 1	B- 8	CORD, taillight	E-10	DIAPHRAGM SET, 1	B-13
CAP	D- 3	COTTER, valve	B- 7	DIAPHRAGM, reservoir	D-15
*	E- 7	COVER	D- 4	DISC, brake (RIGHT)	D-11
CAP ASSY	D- 9	COVER 1	B-13	DRIVE AXLE ASSY	C- 8
CAP, cleaner case 1	B-11	COVER, ball race 2	D- 5	DUCT	B-11
CAP, reservoir	D-15	COVER, cap	C- 2	ELEMENT ASSY, oil cleaner	B- 9
CARBURETOR ASSY 1	B-12	COVER, cap 2	B- 9	ELEMENT, air cleaner	B-11
CASE, chain	D- 3	COVER, crankcase 1	C- 2	ELEMENT, air cleaner 2	B-11
CHAIN	B- 8	COVER, crankcase 2	C- 2	EMBLEM	E- 5
*	D-14	COVER, crankcase 3	C- 2	EMBLEM 1	C-15
CIRCLIP	B- 2	COVER, cylinder head side 3	B- 2	*	D- 9
*	B- 5	COVER, hub dust	D-11	EMBLEM, rear arm	D- 2
*	B- 9	COVER, oil cooler	B-10	FENDER, rear	C-14
*	C- 4	COVER, oil element	B- 9	FITTING PLATE, bulb	E- 9
*	C- 5	COVER, rear footrest	E- 4	FLANGE, spacer	D-13
*	C- 8	COVER, seat	D-10	FLAP	B-11
*	C-11	COVER, shift Pedal	C-11	FLASHER RELAY ASSY	E-13
*	D- 4	COVER, side 1	C-15	FLOAT	B-12
CIRCUIT BREAKER ASSY	E-12	COVER, side 2	C-15	FOOTREST 1	E- 3
CLAMP	B-10	COVER, socket	E- 9	FOOTREST 2	E- 3
*	C- 2	COVER, spring	C- 4	FOOTREST, rear 1	E- 4
*	D- 5	COVER, starter	E-11	FORK UNIT ASSY	D- 6
CLAMP, hose	B-11	COVER, thrust 1	D- 2	FORK UNIT ASSY 2	D- 6
CLIP	B-11	COVER, thrust 2	D- 3	FORK, shift 1	C-10
*	B-13	*	D- 4	FORK, shift 2	C-10
*	B-15	CRANK 1	B- 5	FORK, shift 3	C-10
*	C-15	CRANK 2	B- 5	FRAME COMP.	C-12
*	D- 5	CRANKCASE ASSY	B-15	FRONT FENDER COMP.	C-14
*	D- 9	CRANKSHAFT ASSY	B- 5	FRONT FORK ASSY (L.H.)	D- 6
*	D-15	CROWN, handle	D- 5	FRONT FORK ASSY (R.H.)	D- 6
*	E- 8	CYLINDER	B- 4	FRONT STOP SWITCH ASSY	E-11
CLIP, cover fitting	E- 9	CYLINDER COMP., front fork	D- 6	FUEL COCK ASSY 1	D- 9
CLUTCH, hub	D-13	*	D- 7	FUEL TANK COMP.	D- 9
COLLAR	B-10	CYLINDER HEAD ASSY	B- 2	GASKET	B- 3
*	B-15	CYLINDER KIT, master	D-15	*	B- 4
*	C-10	DAMPER	D-13	*	B- 9

PARTS NAME INDEX

DESCRIPTION	GRID NO.	DESCRIPTION	GRID NO.	DESCRIPTION	GRID NO.
GASKET	B-12	GUARD, chain	D-2	LENS, taillight	E-10
*	B-13	GUIDE	B-11	LEVER 1	E-11
*	B-15	GUIDE, cable	D-5	LEVER 2	E-11
*	C-6	GUIDE, intake valve (1ST O/S)	B-2	LEVER, cable	C-5
*	C-15	GUIDE, ratchet wheel	C-4	LEVER, camshaft	D-13
*	D-6	GUIDE, spring 2	D-4	LEVER, starter	B-13
*	D-7	GUIDE, stopper 1	B-8	*	E-11
*	D-9	GUIDE, stopper 2	B-8	LID	C-14
*	E-13	HANDLEBAR	D-15	MAIN AXLE COMP.	C-8
GASKET, crankcase cover 1	C-2	HEADLIGHT UNIT ASSY	E-9	MAIN SWITCH STEERING LOCK	E-12
GASKET, crankcase cover 3	C-2	HELMET HANGER ASSY	D-10	MASTER CYLINDER ASSY	D-15
GASKET, cylinder	B-4	HOLDER, axle	D-7	METAL, slide 2	D-6
GASKET, cylinder head 1	B-4	HOLDER, cable 1	D-5	*	D-7
GASKET, exhaust pipe	B-14	HOLDER, clutch cable	C-2	MUFFLER 1	B-14
GASKET, flasher lens	E-7	HOLDER, damper	D-5	NEEDLE SET	B-12
GASKET, float chamber	B-12	HOLDER, handle lower	D-5	NEEDLE VALVE SET	B-12
GASKET, lens	E-10	HOLDER, handle upper	D-5	NET, filter	C-15
GASKET, muffler	B-14	HOLDER, lever 1	E-11	NEUTRAL SWITCH ASSY	E-13
GASKET, tensioner case	B-8	HOLDER, oil cooler 1	B-10	NIPPLE, grease	D-3
GAUGE, level	C-15	HOLDER, sprocket	C-8	NOZZLE, main	B-12
GEAR UNIT ASSY	D-11	HORN	E-13	NOZZLE, main 2	B-12
GEAR UNIT ASSY, tachometer drive	B-2	HOSE	C-15	NUT	B-4
GEAR, balance wt(44T)	B-5	*	E-12	*	B-5
GEAR, drive(44T)	B-5	HOSE, brake 1	D-15	*	B-6
GEAR, kick idle	C-4	HOSE, oil cooler	B-10	*	B-7
GEAR, kick(35T)	C-4	HOSE, oil 1	B-9	*	B-13
GEAR, Primary drive(31T)	C-6	HOSE, oil 2	B-10	*	B-14
GEAR, Pump driven	B-9	HUB, front	D-11	*	C-5
GEAR, 1st wheel(31T)	C-8	HUB, rear	D-13	*	C-6
GEAR, 2nd Pinion	C-8	IGNITION COIL ASSY	E-12	*	C-14
GEAR, 2nd wheel	C-8	INNER TUBE COMP.1	D-6	*	D-5
GEAR, 3rd Pinion(20T)	C-8	INSULATOR, side cover	C-15	*	D-7
GEAR, 3rd wheel(24T)	C-8	JET, main (#126)	B-12	*	D-8
GEAR, 4th Pinion(22T)	C-8	*	B-13	*	D-13
GEAR, 4th wheel(21T)	C-8	JET, Pilot (# 48)	B-12	*	D-15
GEAR, 5th Pinion	C-8	JOINT	B-11	*	E-2
GEAR, 5th wheel(21T)	C-8	*	C-6	*	E-3
GRAPHIC SET	D-9	JOINT, air cleaner 1	B-11	*	E-10
GRIP (L.H)	D-15	JOINT, carburetor 1	B-11	*	E-11
GRIP (R.H)	D-15	JOINT, carburetor 2	B-11	NUT, adjusting	D-4
GROMMET	B-10	JOINT, chain	D-14	*	E-9
*	C-12	KEY, straight	B-6	NUT, castle	D-11
*	C-15	*	C-6	*	D-14
*	D-11	KEY, woodruff	B-5	NUT, crown	B-4
*	D-14	KICK AXLE ASSY	C-4	NUT, flange	D-2
*	E-5	KICK CRANK ASSY	C-4	*	E-7
*	E-2	LENS, flasher	E-7	*	E-12
GUARD, brush 1	E-2	LENS, headlight	E-9	NUT, self-locking	C-12
GUARD, brush 2	E-2				

PARTS NAME INDEX

DESCRIPTION	GRID NO.	DESCRIPTION	GRID NO.	DESCRIPTION	GRID NO.
NUT, self-locking	D-2	PIN, crank 1	B-5	PLUG, drain	D-7
*	D-3	PIN, dowel	B-2	PLUG, screw	B-12
*	D-4	*	B-4	PLUG, spark (NGK DPR7EA 9)	B-2
*	E-4	*	B-5	PLUG, spark (NGK DP7EA 9)	B-2
NUT, u	E-11	*	B-15	PLUG, straight screw	B-2
NUT, wing	E-3	*	C-2	*	C-2
O-RING	B-2	*	C-10	PLUG, taper	C-4
*	B-4	*	C-11	PLUG, viewer	B-2
*	B-7	*	D-4	PRIMARY DRIVEN GEAR COMP.(74T)	C-6
*	B-9	PIN, float	B-12	PROTECTOR, exhaust pipe	B-14
*	B-10	PIN, piston	B-5	PROTECTOR, muffler 2	B-14
*	B-11	PIPE	B-12	PROTECTOR	B-11
*	B-12	*	B-13	PROTECTOR, chain	D-2
*	B-15	PIPE, breather 1	B-15	PROTECTOR, engine	C-12
*	C-2	PIPE, exhaust 1	B-14	PULLER, chain 1	D-14
*	C-15	PIPE, fuel 1	D-9	PULLER, chain 2	D-14
*	D-6	PIPE, outlet	B-14	PUSH LEVER COMP.	C-6
*	D-7	PISTON (STD)	B-5	REAR ARM COMP.	D-2
*	E-8	PISTON (0.50MM O/S)	B-5	REAR FLASHER LIGHT ASSY 1	E-7
OIL COOLER ASSY	B-10	PISTON (1.00MM O/S)	B-5	REAR REFLECTOR ASSY	E-10
OIL PUMP ASSY	B-9	PISTON ASSY, caliper	D-11	RECTIFIER & REGULATOR ASSY	E-12
OIL SEAL	B-2	PISTON RING SET (STD)	B-5	RETAINER, valve spring	B-7
*	B-3	PISTON RING SET (2ND O/S)	B-5	RIM (1.60-21)	D-11
*	B-6	PISTON RING SET (4TH O/S)	B-5	RIM (2.50-18)	D-13
*	C-2	PISTON, front fork	D-6	RIM, headlight	E-9
*	C-4	*	D-7	RING, cover	D-4
*	C-6	PLATE	B-10	RING, leaf	D-15
*	C-8	*	B-13	RING, piston	D-6
*	C-11	*	C-12	*	D-7
*	D-2	PLATE, bearing cover	B-15	RING, snap	D-6
*	D-6	PLATE, brake shoe	D-13	*	D-7
*	D-7	PLATE, breather 2	B-6	RIVET, blind	C-12
*	D-11	PLATE, cleaner case fitting	C-15	*	C-14
*	D-13	PLATE, clutch 2	C-6	*	D-3
OIL TANK ASSY	C-15	PLATE, cover	C-8	*	E-10
PEDAL, brake	E-3	PLATE, decomp	C-3	ROD, brake	E-3
PILOT SCREW SET	B-12	PLATE, element fitting	B-11	ROD, connecting	B-5
PIN	C-6	PLATE, friction	C-6	ROD, connecting 1	D-2
*	E-3	PLATE, friction 2	C-6	ROD, push 1	C-6
PIN, clevis	D-4	PLATE, indicator	D-13	ROD, push 2	C-7
*	D-14	PLATE, pressure 1	C-6	ROTOR ASSY	E-6
*	E-3	PLATE, push	C-6	SCREW	B-9
*	E-4	PLATE, stay	B-13	*	B-13
PIN, cotter	D-4	PLATE, thrust 1	C-6	*	C-6
*	D-11	PLUG	B-9	*	D-9
*	D-14	PLUG CAP ASSY	E-12	*	E-11
*	E-3	PLUG, blind	B-11	SCREW, blind	B-13
*	E-4	PLUG, drain	D-6	*	B-14

## PARTS NAME INDEX

DESCRIPTION	GRID NO.	DESCRIPTION	GRID NO.	DESCRIPTION	GRID NO.
SCREW, countersunk	C- 4	SEGMENT	C-10	SPRING, tension	E- 4
*	C-10	SEMI-DOUBLE SEAT ASSY	D-10	SPRING, throttle valve	B-13
SCREW, flat head	B- 2	SHAFT, Pivot	D- 3	SPRING, torsion	B- 3
*	B-15	SHAFT, rocker	B- 7	*	C- 4
*	D-10	SHAFT, rocker 2	B- 7	*	C- 5
*	D-15	SHAFT, rocker 3	B- 7	*	C- 7
SCREW, hexagon	E-11	SHIFT CAM ASSY	C-10	*	C-10
SCREW, lens fitting	E-10	SHIFT LEVER ASSY	C-11	*	C-11
SCREW, Pan head	B- 9	SHIFT PEDAL ASSY	C-11	*	E- 3
*	B-11	SHIFT SHAFT ASSY	C-11	SPRING, valve inner	B- 7
*	B-12	SHIFT SHAFT ASSY 2	C-11	SPRING, valve outer	B- 7
*	B-13	SHIM	C- 8	SPROCKET, cam chain	B- 8
*	B-14	SHIM, caliPer	D-11	SPROCKET, drive (15T)	C- 8
*	C- 2	SHIM, kick shaft	C- 2	SPROCKET, driven (39T)	D-13
*	C-12	SHOCK ABSORBER ASSY, rear	D- 4	STAND, side	E- 4
*	C-14	SOCKET CORD ASSY	E- 8	STARTER SET	B-13
*	D- 3	*	E-10	STATOR ASSY	E- 6
*	D- 5	SOCKET, meter	E- 8	STAY	D- 5
*	D- 9	SOCKET, Pilot light	E- 9	STAY UNIT	E-12
*	D-15	SPACER	D- 6	STAY, engine 2	C-12
*	E- 2	*	D- 7	STAY, engine 3	C-12
*	E- 6	SPACER, bead	D-11	STAY, flasher	E- 7
*	E- 7	SPACER, bearing	D-13	STAY, flasher 1	E- 7
*	E- 9	SPACER, oil lock	D-13	STAY, flasher 2	E- 7
*	E-11	*	D- 6	STOP SCREW SET	B-13
*	E-12	SPEEDOMETER ASSY	D- 7	STOP SWITCH ASSY	E-13
SCREW, tapping	B-11	SPEEDOMETER CABLE ASSY	E- 8	STOPPER	C- 4
*	B-14	SPOKE SET, front	E- 8	STOPPER LEVER ASSY	C-10
*	E- 7	SPOKE SET, rear	D-11	STOPPER, main stand	C-12
SCREW, valve adjusting	B- 7	SPRING	D-13	STRAINER COMP.	B- 9
SCREW, with washer	C- 6	*	B-12	SUB CARRIER ASSY	D-10
*	C-10	*	B-13	SUPPORT, boot	D- 3
*	E- 9	SPRING, clutch boss	D- 4	SUPPORT, Pad	D-11
SEAL	B-13	SPRING, compression	D- 6	SWITCH, handle 1	E-11
SEAL 1	C-12	*	C- 6	SWITCH, handle 4	E-11
*	C-14	*	B- 5	TACHOMETER ASSY	E- 8
SEAL, cock	D- 9	*	B- 9	TACHOMETER CABLE ASSY	E- 8
SEAL, dust	D- 6	*	C- 4	TALLIGHT ASSY	E-10
*	D- 7	*	C- 6	TENSIONER	C-12
SEAL, Guard	D- 2	*	E- 3	TENSIONER ASSY, cam chain	B- 8
SEAL, oil strainer	B- 9	SPRING, front fork	E-11	THROTTLE LEVER COMP	B-13
SEAL, valve stem	B- 7	*	D- 6	THROTTLE SCREW SET	B-12
SEAT, battery	E-12	*	D- 7	TIRE (3.00-21)	D-11
SEAT, check ball	B- 9	SPRING, rebound	D- 6	TIRE (4.60-18)	D-13
SEAT, sPring lower	D- 4	*	D- 7	TOOL KIT	C-15
SEAT, sPring upper	D- 4	SPRING, reflector	E- 9	TUBE (2.75-21)	D-11
*	D- 6	SPRING, screw	E- 9	TUBE (4.00-18)	D-13
*	D- 7	SPRING, tension	D-13	TUBE, throttle Guide	D-15
SEAT, valve sPring	B- 7				

PARTS NAME INDEX

DESCRIPTION	GRID NO.	DESCRIPTION	GRID NO.	DESCRIPTION	GRID NO.
UNDER BRACKET COMP. ....	D- 7	WASHER, Plate .....	E- 3		
UPPER BRACKET SUB ASSY .....	D- 4	*	E- 4		
VALVE, exhaust .....	B- 7	*	E- 5		
VALVE, intake .....	B- 7	*	E- 8		
VALVE, throttle 1 .....	B-12	*	E-10		
WASHER .....	B- 5	*	E-11		
*	B-10	*	E-12		
*	C- 8	WASHER, Plate (1.0T) .....	C- 4		
*	C-14	WASHER, Plate (1.95T) .....	D- 2		
*	D- 4	WASHER, Protector .....	B-14		
*	D-13	WASHER, sPacial .....	E- 9		
*	E-11	WASHER, sPring .....	B-10		
*	E-12	*	B-12		
WASHER, bearing cover .....	B- 5	*	B-13		
WASHER, lock .....	B- 6	*	B-14		
*	C- 4	*	C-12		
*	C- 6	*	C-14		
WASHER, Plain .....	B-12	*	C-15		
*	C- 6	*	D- 3		
*	D- 7	*	D- 5		
*	D-12	*	D- 7		
*	E- 2	*	D- 8		
*	E- 3	*	D-12		
*	E-11	*	D-15		
WASHER, Plate .....	B- 2	*	E- 5		
*	B- 4	*	E- 6		
*	B- 5	*	E-10		
*	B- 8	*	E-11		
*	B-11	WASHER, wave .....	B- 7		
*	B-14	*	B-14		
*	C- 4	WEIGHT 1 .....	B- 5		
*	C- 5	WHEEL, ratchet .....	C- 4		
*	C- 7	WIRE HARNESS ASSY .....	E-12		
*	C- 8	WIRE, Plus lead .....	E-12		
*	C-11				
*	C-12				
*	C-13				
*	C-14				
*	C-15				
*	D- 2				
*	D- 3				
*	D- 4				
*	D- 5				
*	D- 8				
*	D- 9				
*	D-11				
*	D-15				
*	E- 2				

1  
2  
3  
4  
5  
6  
7  
8  
9  
10  
11  
12  
13  
14  
15  
16  
17  
18  
19  
20  
21  
22  
23  
24  
25  
26  
27  
28  
29  
30  
31  
32  
33  
34  
35  
36  
37  
38  
39  
40  
41  
42  
43  
44  
45  
46  
47  
48  
49  
50  
51  
52  
53  
54  
55  
56  
57  
58  
59  
60  
61  
62  
63  
64  
65  
66  
67  
68  
69  
70  
71  
72  
73  
74  
75  
76  
77  
78  
79  
80  
81  
82  
83  
84  
85  
86  
87  
88  
89  
90  
91  
92  
93  
94  
95  
96  
97  
98  
99  
100

