

YAMAHA

PARTS CATALOGUE

XT600S (49L)

1649L-700E1

CONTENTS

ENGINE

Cylinder Head	B2 ~ B3
Cylinder	B4
Crankshaft · Piston	B5 ~ B6
Valve	B7
Camshaft · Chain	B8
Oil Pump	B9 ~ B10
Intake	B11 ~ B12
Carburetor	B13 ~ B14
Exhaust	B15
Crankcase	C2
Crankcase Cover 1	C3 ~ C4
Starter	C5 ~ C6
Clutch	C7 ~ C8
Transmission	C9
Shift Cam · Fork	C10
Shift Shaft	C11

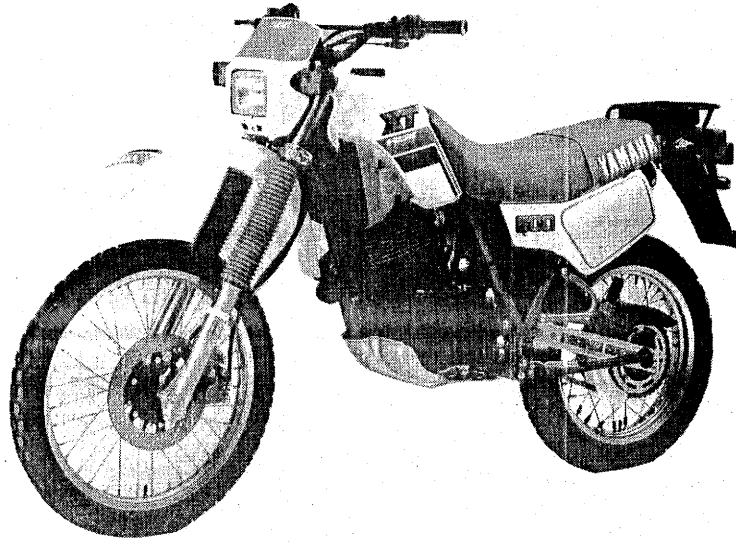
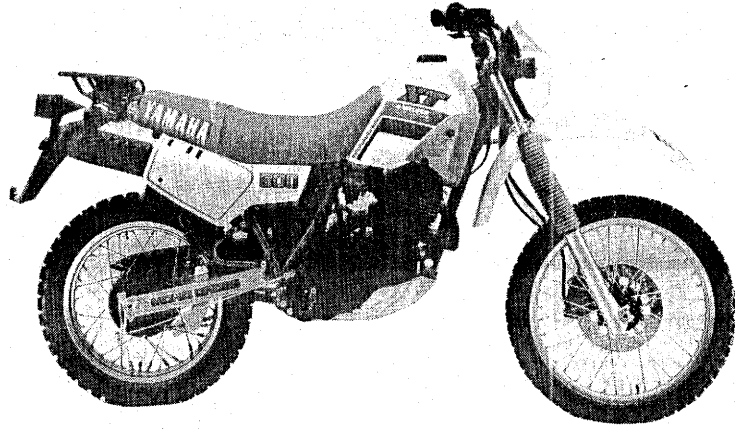
CHASSIS

Frame	C12 ~ C13
Fender	C14
Side Cover · Oil Tank	C15 ~ D2
Rear Arm	D3 ~ D4
Rear Suspension	D5
Steering	D6 ~ D7
Front Fork	D8 ~ D9

Fuel Tank	D10
Seat	D11
Front Wheel	D12 ~ D13
Rear Wheel	D14 ~ D15
Steering Handle · Cable	E2 ~ E3
Stand · Footrest	E4 ~ E5
Cowling 1	E6
Generator	E7
Flasher Light	E8
Meter	E9
Headlight	E10
Taillight	E11
Handle Switch · Lever	E12 ~ E13
Electrical 1	E14
Electrical 2	E15

INDEX

NUMERICAL INDEX	M1 ~ M4
-----------------------	---------



A3

FOREWORD

This Parts Catalogue is related to the parts in use for the Yamaha XT600S (49L).
When you are ordering replacement parts for the XT600S (49L), refer to this Parts Catalogue and quote both part numbers and part names correctly.

1. Modifications or additions which have been made after issue of the Parts Catalogue will be announced in the Yamaha Parts News.
It is advisable that according to the Yamaha Parts News you make necessary corrections to the Parts Catalogue on hand to keep it up-to-date.

2. Abbreviations

The following abbreviations are used in this Parts Catalogue.

- U.R. Use size (thickness) and/or number as required.
- U.N. Use as many as you need.
- A.P. Alternate Parts
- L.M. Local Made
- F# Frame No. (Applicable machine No.)

3. The parts marked with (*) in the parts number column of this Catalogue are not supplied with by Yamaha, those have to be found locally.
4. Parts, which are to be supplied in the form of assemblies, are listed with an indentation of one letter's space, and a dot (.) is put against the name of each part.

EXAMPLE
 CARBURETOR ASS'Y
 . JET, pilot
 . NOZZLE, main

5. Indication of No. of constituent parts for assembly

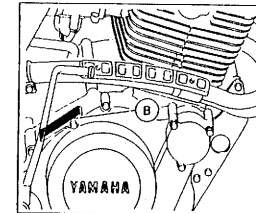
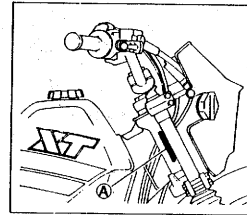
The numeral appearing to the right of each constituent part under the description indicates the quantity of such parts for each individual assembly unit.

EXAMPLE

Part No.	Description	Q'ty	Remarks
2F5-83310-60	FRONT FLASHER LIGHT ASS'Y	2	
115-83311-60	. BULB (6V-18W)	1	
1M1-83309-60	. REFLECTOR	1	

6. Initial Serial No. and Color Code

(A) Frame Serial No.	49L-007101 and following
(B) Engine Serial No.	49L-007101 and following



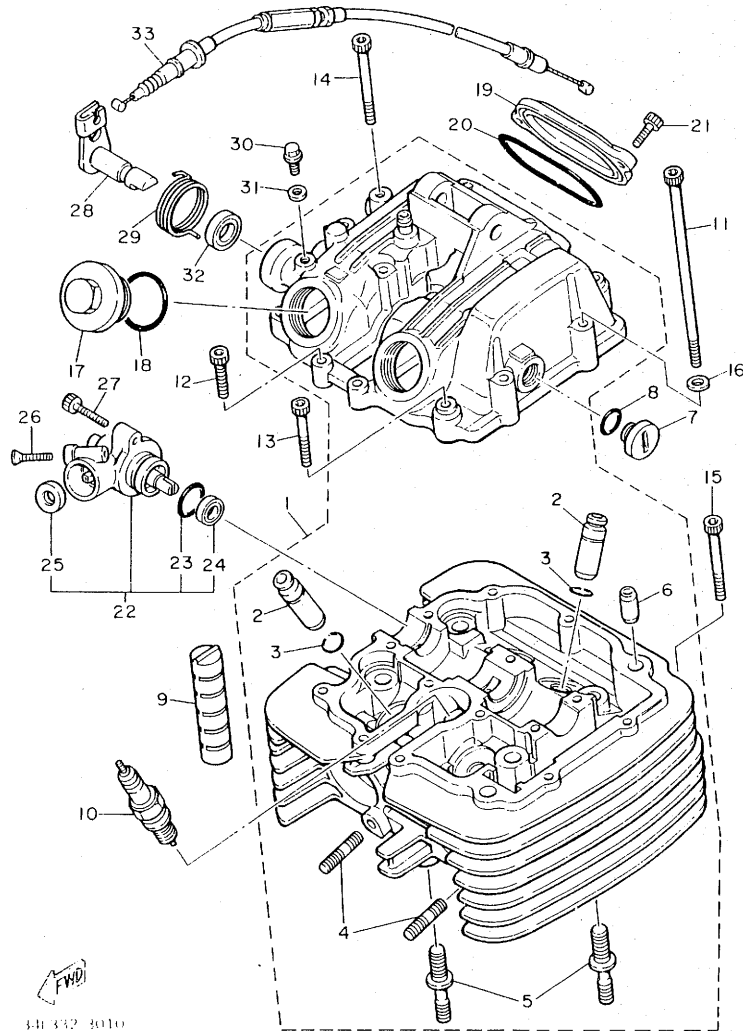
Color Code	Color Name	Abbreviate
36	CLEAN WHITE	W
33	YAMAHA BLACK	YB

7. Applicable colors of graphics are represented in the "Remarks" column by the letter(s) appropriately picked out of the full word(s) showing such colors.

EXAMPLE

Part No.	Description	Q'ty	Remarks
2N4-24110-00-X5	FUEL TANK COMP.	1	MAXIM RED
3J1-24240-10	. GRAPHIC, fuel tank set	1	for MXR

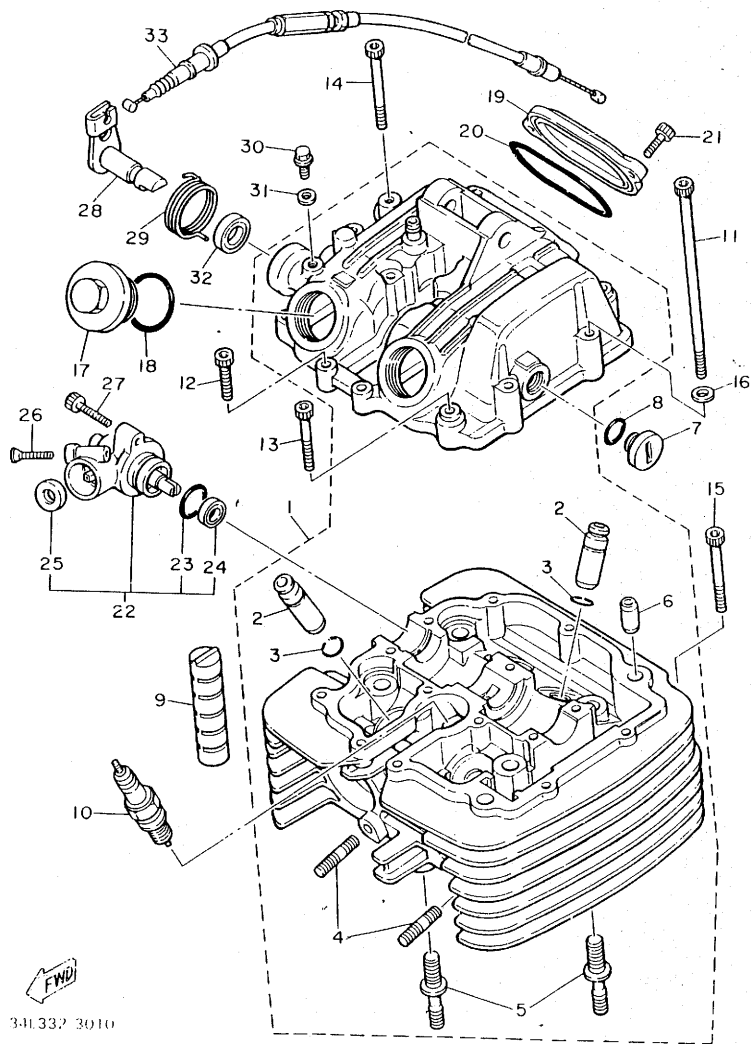
FIG. 1 CYLINDER HEAD



REF. NO.	PART NO.	DESCRIPTION	Q'TY	REMARKS
1	34L-11101-01	CYLINDER HEAD ASSY	1	
2	4H7-11133-10	•GUIDE, intake valve	4	
3	93440-12052	•CIRCLIP	4	
4	95611-06620	•BOLT, stud	4	
5	90116-10378	•BOLT, stud	2	
6	99510-10114	•PIN, dowel	2	
7	90340-14079	PLUG, straight screw	1	
8	93210-14369	O-RING	1	
9	583-11127-00	ABSORBER 3	2	
10	94701-00275	PLUG, sPark (NGK DP8EA-9)	1	UR
	94701-00241	PLUG, sPark (NGK DPR8EA-9)	1	UR for s.africa
11	91316-06125	BOLT	2	
12	91316-06025	BOLT	4	
13	91316-06040	BOLT	3	
14	91316-06055	BOLT	7	
15	91316-06050	BOLT	1	
16	92906-06600	WASHER, Plate	2	
17	1H2-11186-00	COVER, cylinder head side 2	2	
18	93210-32172	O-RING	2	
19	5Y1-11187-00	COVER, cylinder head side 3	1	
20	93210-62446	O-RING	1	
21	91316-06018	BOLT	2	
22	5Y1-17800-00	GEAR UNIT ASSY, tacho. drive	1	
23	93210-19522	•O-RING	1	
24	93102-11262	•OIL SEAL	1	
25	93102-07261	•OIL SEAL	1	
26	92706-06030	SCREW, flat head	1	
27	91316-06025	BOLT	1	

B2

FIG. 1 CYLINDER HEAD

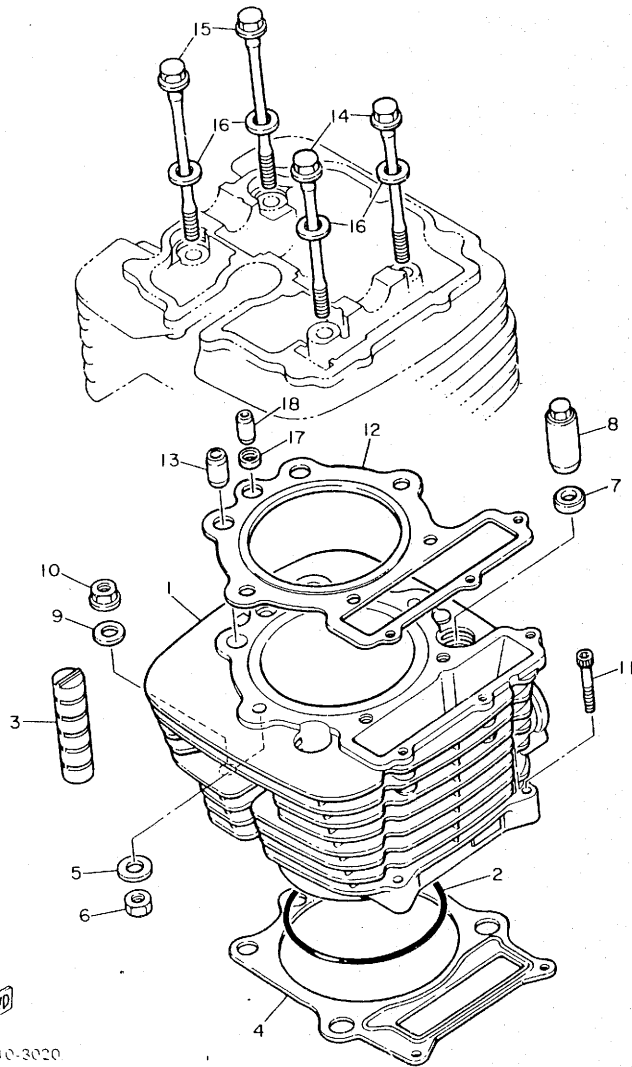


34L337 3010

REF. NO.	PART NO.	DESCRIPTION	Q'TY	REMARKS
28	34K-12288-00	CAM, decompression	1	
29	90508-18551	SPRING, torsion	1	
30	90109-06418	BOLT	1	
31	90430-06014	GASKET	1	
32	93102-12106	OIL SEAL	1	
53	34L-12292-00	CABLE, decompression	1	

B3

FIG. 2 CYLINDER



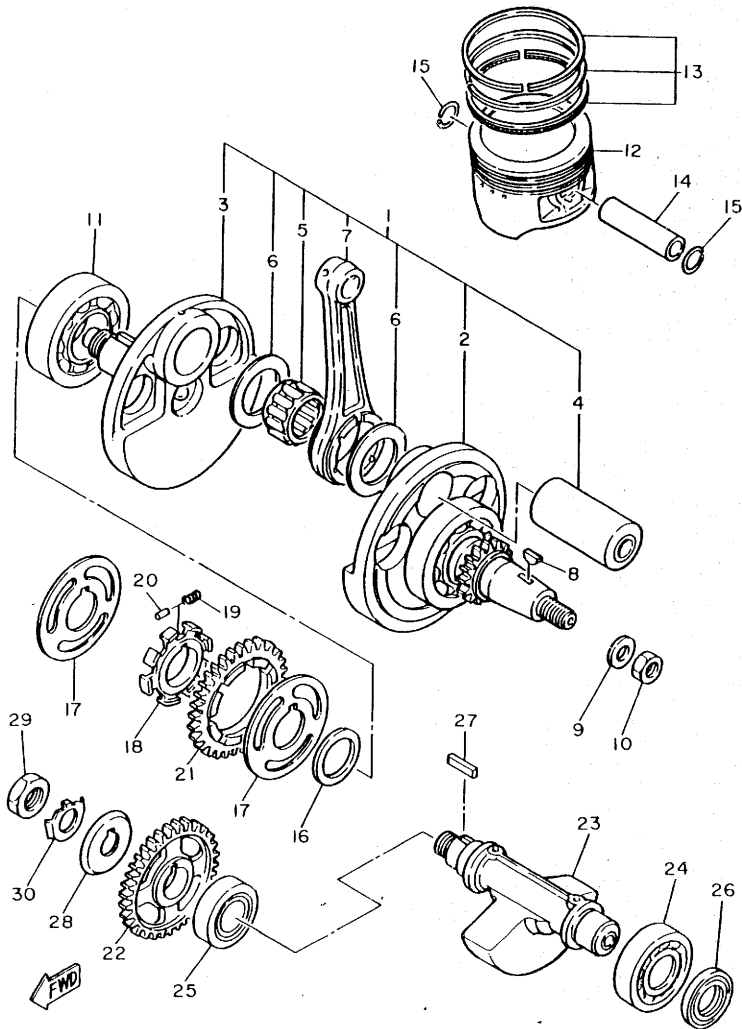
REF. NO.	PART NO.	DESCRIPTION	Q'TY	REMARKS
1	34L-11310-00	CYLINDER	1	
2	93210-98473	O-RING	1	
3	583-11127-00	ABSORBER 3	2	
4	34K-11351-00	GASKET, cylinder	1	
5	90201-08760	WASHER, Plate	2	
6	90176-08026	NUT, crown	2	
7	90201-10590	WASHER, Plate	2	
8	90179-10201	NUT	2	
9	90201-10124	WASHER, Plate	2	
10	90179-10279	NUT	2	
11	91316-06030	BOLT	2	
12	34K-11181-00	GASKET, cylinder head 1	1	
13	91810-05018	PIN, dowel	2	
14	90105-08213	BOLT, washer based	2	
15	90105-08214	BOLT, washer based	2	
16	90201-08609	WASHER, Plate	4	
17	90430-08178	GASKET	1	
18	99510-08016	PIN, dowel	1	

FYD

51110-3020

B4

FIG. 3 CRANKSHAFT. PISTON

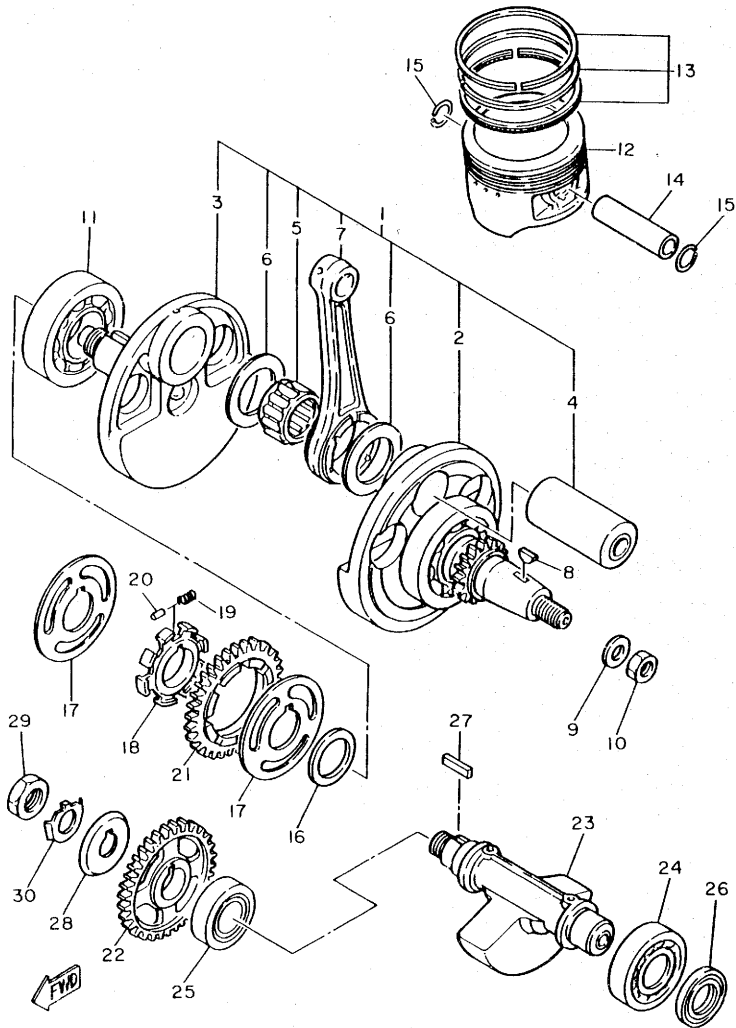


43F300-6030

REF. NO.	PART NO.	DESCRIPTION	Q'TY	REMARKS
1	34K-11400-00	CRANKSHAFT ASSY	1	
2	34K-W1141-00	•CRANK 1	1	
3	34K-11422-00	•CRANK 2	1	
4	34K-11681-00	•PIN, crank 1	1	
5	93310-634K2	•BEARING, cylindrical	1	
6	90209-34254	•WASHER	2	
7	34K-11651-00	•ROD, connecting	1	
8	90280-05013	KEY, woodruff	1	
9	90201-140A6	WASHER, Plate	1	
10	90179-14317	NUT	1	
11	93306-30710	BEARING	1	
12	34L-11631-01	PISTON (STD)	1	UR
	34L-11636-01	PISTON (0.50MM O/S)	1	AP
	34L-11638-01	PISTON (1.00MM O/S)	1	AP
13	34L-11610-00	PISTON RING SET (STD)	1	UR
	34L-11610-20	PISTON RING SET (2ND O/S)	1	AP
	34L-11610-40	PISTON RING SET (4TH O/S)	1	AP
14	34K-11633-00	PIN, Piston	1	
15	93450-24028	CIRCLIP	2	
16	90201-301F4	WASHER, Plate	1	
17	34K-11565-02	WASHER, bearing cover	2	
18	5Y1-11496-01	BOSS, buffer	1	
19	90501-22721	SPRING, compression	8	
20	93605-10090	PIN, dowel	4	
21	34K-11536-01	GEAR, drive(44T)	1	
22	5Y1-11531-00	GEAR, blanc wt 44t	1	
23	34K-11454-00	WEIGHT 1	1	
24	93306-30525	BEARING (B6305)	1	

B5

FIG. 3 CRANKSHAFT. PISTON

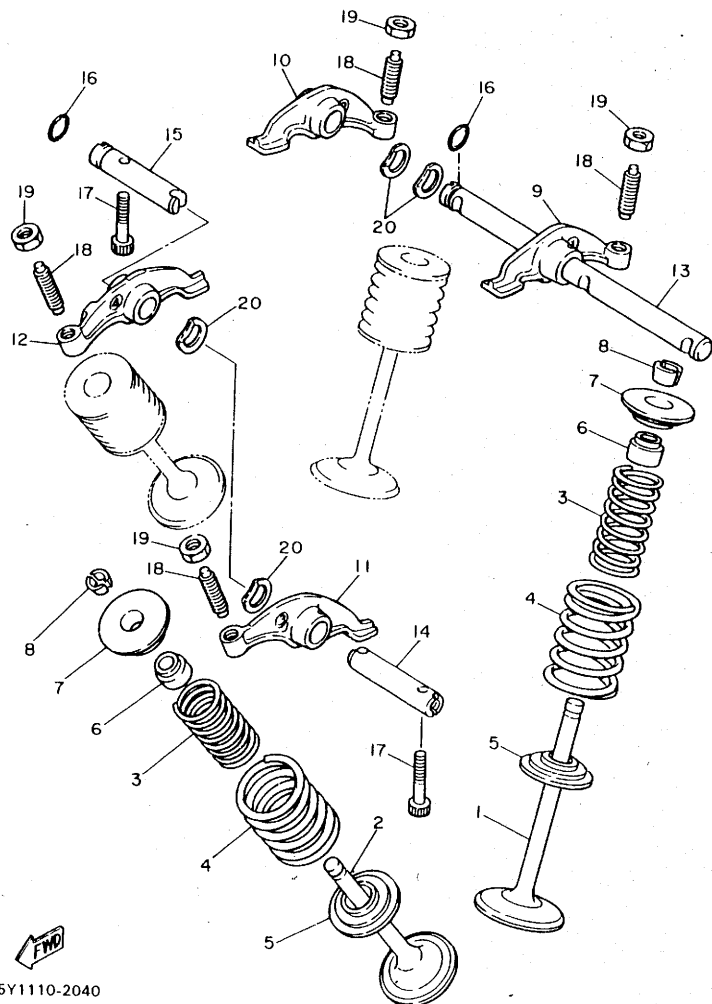


43F300-6030

REF. NO.	PART NO.	DESCRIPTION	Q'TY	REMARKS
25	93306-30541	BEARING	1	
26	93101-25106	OIL SEAL	1	
27	90282-05013	KEY, straight	1	
28	34K-11145-00	PLATE, breather 2	1	
29	90170-16343	NUT	1	
30	90215-16242	WASHER, lock	1	

B6

FIG. 4 VALVE



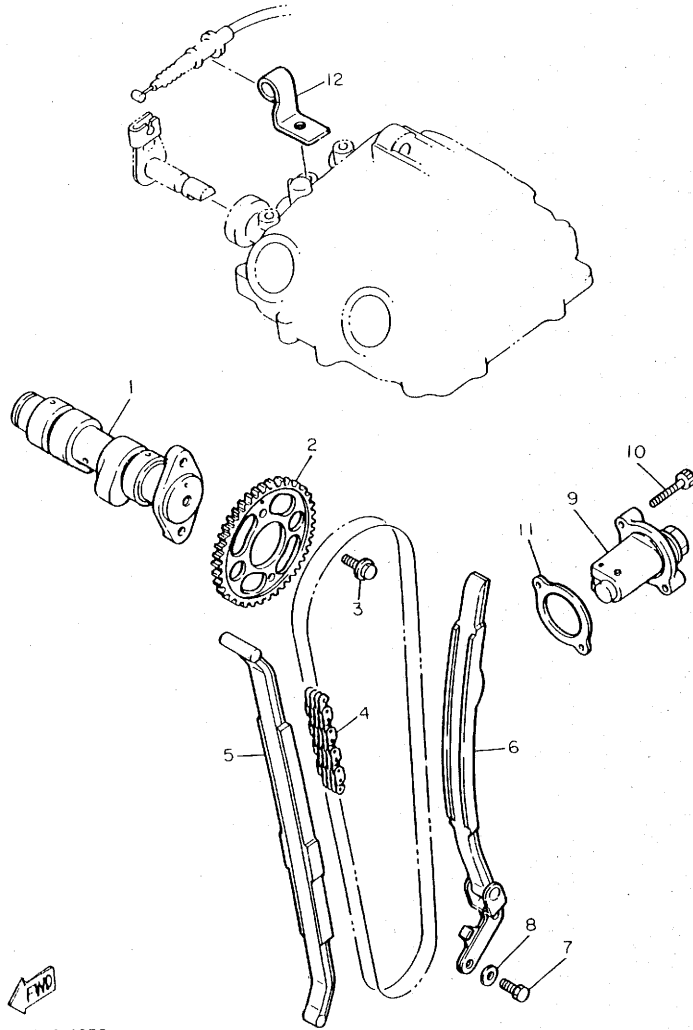
REF. NO.	PART NO.	DESCRIPTION	Q'TY	REMARKS
1	5Y1-12111-00	VALVE, intake	2	
2	34K-12121-00	VALVE, exhaust	2	
3	5Y1-12113-00	SPRING, valve inner	4	
4	5Y1-12114-00	SPRING, valve outer	4	
5	4H7-12116-00	SEAT, valve spring	4	
6	1J7-12119-01	SEAL, valve stem	4	
7	2F3-12117-00	RETAINER, valve spring	4	
8	1J7-12118-00	COTTER, valve	8	
9	34K-12151-00	ARM, valve rocker	1	
10	34K-12161-00	ARM, valve rocker 2	1	
11	34K-12162-00	ARM, valve rocker 3	1	
12	34K-12163-00	ARM, valve rocker 4	1	
13	5Y1-12146-00	SHAFT, rocker	1	
14	5Y1-12156-00	SHAFT, rocker 2	1	
15	5Y1-12166-00	SHAFT, rocker 3	1	
16	93210-08521	O-RING	2	
17	91316-06030	BOLT	2	
18	3Y1-12159-00	SCREW, valve adjusting	4	
19	90170-06128	NUT	4	
20	90206-12075	WASHER, wave	4	

FWD
5Y1110-2040

B7

FIG. 5 CAMSHAFT. CHAIN

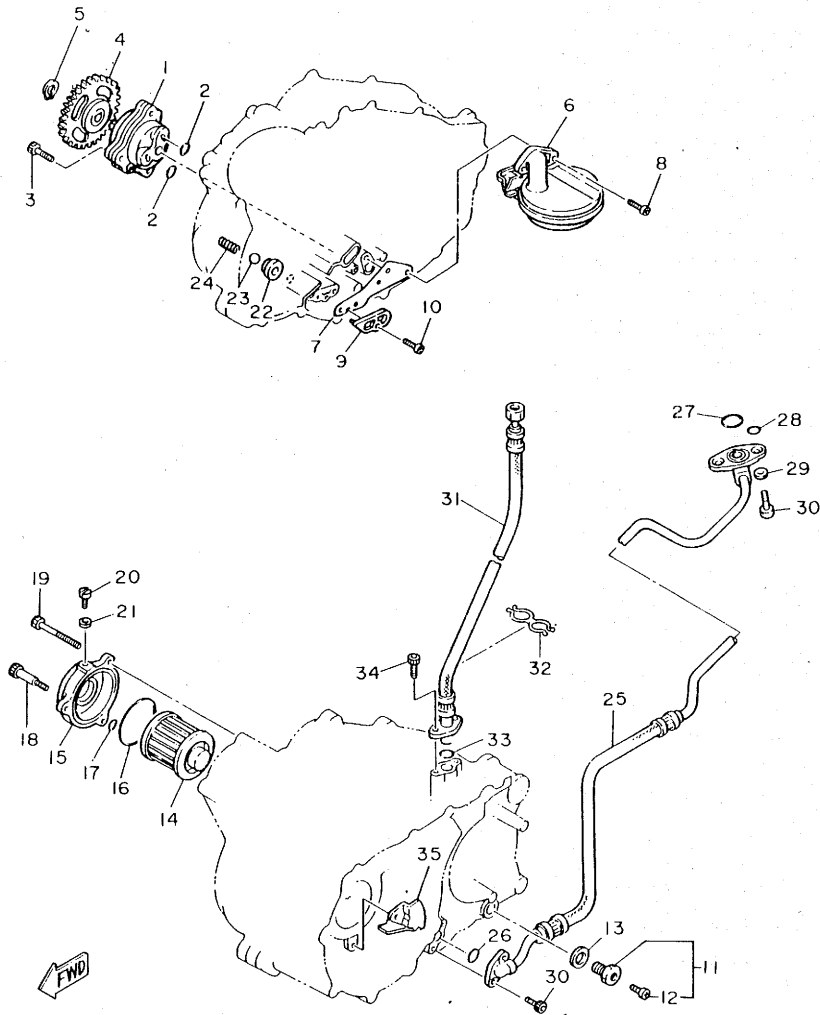
REF. NO.	PART NO.	DESCRIPTION	Q'TY	REMARKS
1	43F-12170-00	CAMSHAFT ASSY 1	1	
2	34K-12176-00	SPROCKET, cam chain	1	
3	90105-07087	BOLT, washer based	2	
4	94590-27126	CHAIN	1	
5	34K-12231-00	GUIDE, stoPPer 1	1	
6	34K-12241-00	GUIDE, stoPPer 2	1	
7	97321-06016	BOLT	2	
8	92901-06600	WASHER, Plate	2	
9	34K-12210-00	TENSIONER ASSY, cam chain	1	
10	91316-06025	BOLT	2	
11	4X7-12213-00	GASKET, tensioner case	1	
12	5Y1-12283-00	BRACKET, decomPression	1	



43F300-4050

B8

FIG. 6 OIL PUMP



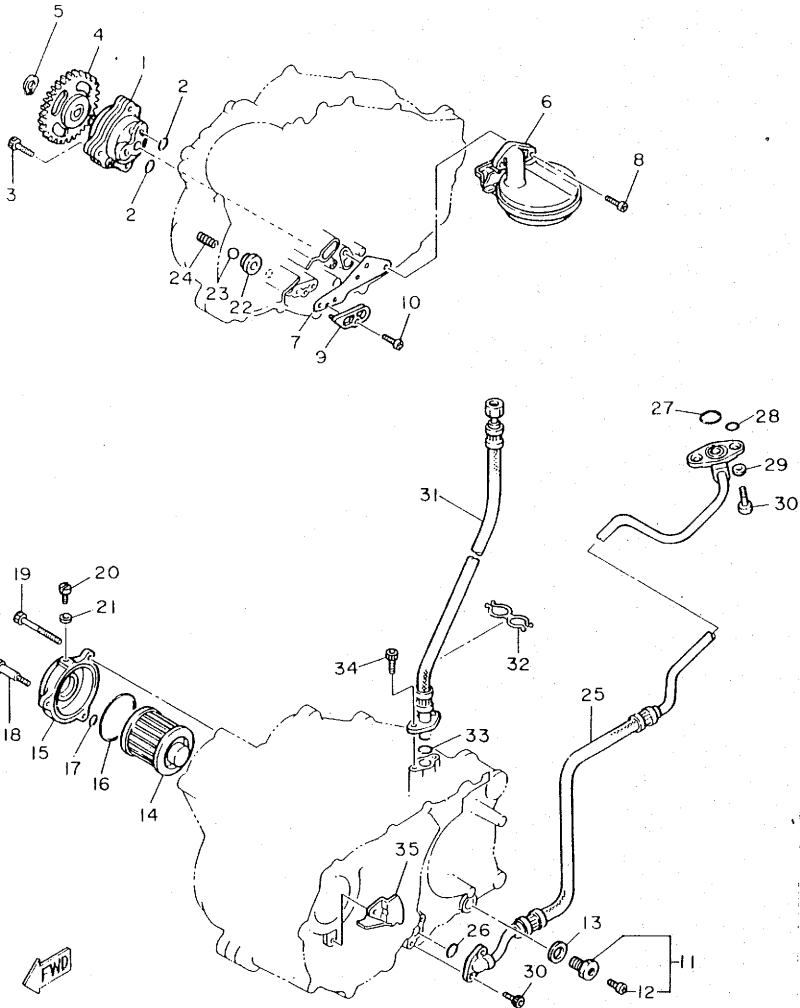
43F300-5060

REF. NO.	PART NO.	DESCRIPTION	Q'TY	REMARKS
1	5Y1-13300-00	OIL PUMP ASSY	1	
2	93210-13361	O-RING	2	
3	91316-06035	BOLT	3	
4	5Y1-13325-00	GEAR, Pump driven	1	
5	99009-11400	CIRCLIP	1	
6	5Y1-W1343-00	STRAINER COMP.	1	
7	5Y1-13415-01	SEAL, oil strainer	1	
8	92501-06014	SCREW, Pan head	2	
9	5Y1-15427-01	COVER, cap 2	1	
10	92501-06014	SCREW, Pan head	1	
11	11H-13455-00	PLUG	1	
12	98901-06008	•SCREW, bind	1	
13	214-11198-01	GASKET	1	
14	4X7-13440-90	ELEMENT ASSY, oil cleaner	1	
15	583-13447-01	COVER, oil element	1	
16	93210-64297	O-RING	1	
17	93210-07135	O-RING	1	
18	90109-06419	BOLT	1	
19	91316-06080	BOLT	2	
20	90149-05110	SCREW	1	
21	90430-05126	GASKET	1	
22	583-13113-00	SEAT, check ball	1	
23	93503-08007	BALL	1	
24	90501-05378	SPRING, compression	1	
25	34L-13464-02	HOSE, oil 1	1	
26	93210-10197	O-RING	1	
27	93210-22298	O-RING	1	
28	93210-09350	O-RING	2	

B9

FIG. 6 OIL PUMP

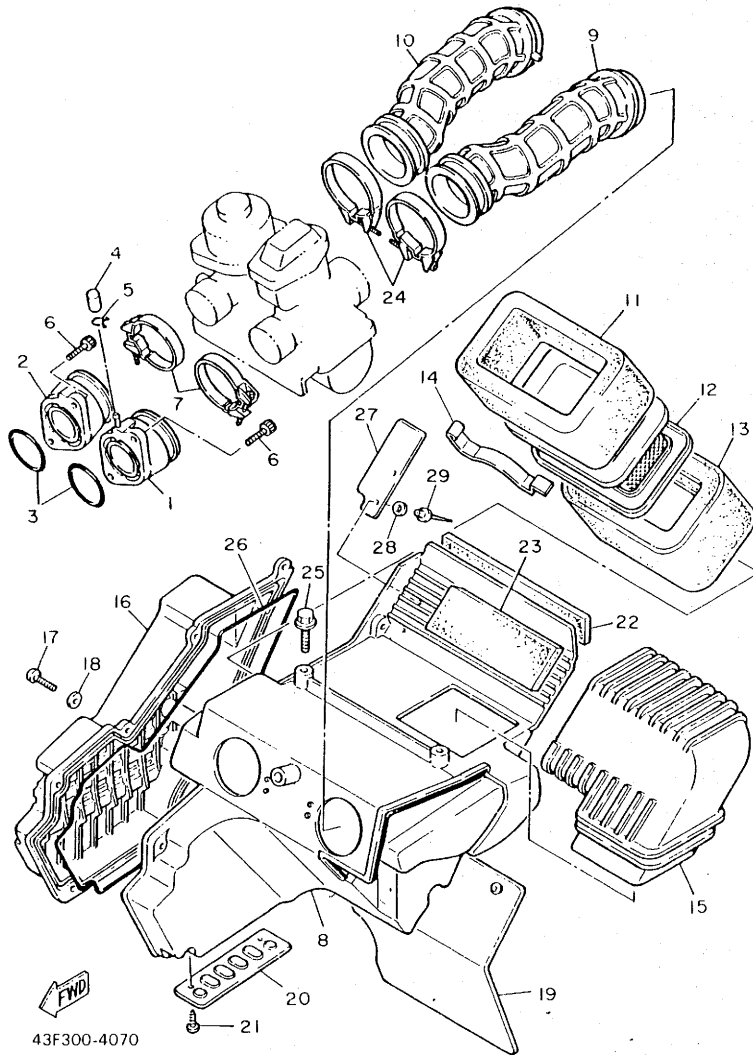
REF. NO.	PART NO.	DESCRIPTION	Q'TY	REMARKS
29	90430-06166	GASKET	2	
30	91316-06016	BOLT	4	
31	43F-13465-00	HOSE, oil 2	1	
32	90464-20064	CLAMP	1	
33	93210-15171	O-RING	1	
34	91316-06016	BOLT	2	
35	5Y1-13371-00	PLATE	1	



43F300-5060

B10

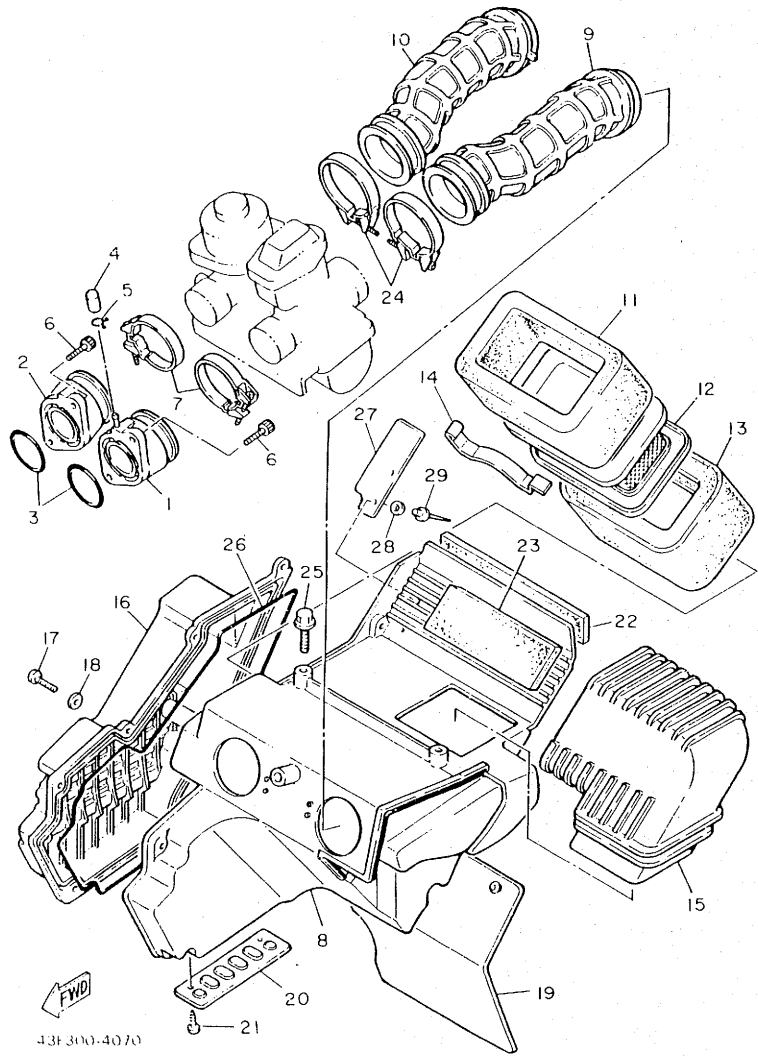
FIG. 7 INTAKE



REF. NO.	PART NO.	DESCRIPTION	Q'TY	REMARKS
1	43F-13586-01	JOINT, carburetor 1	1	
2	43F-13596-00	JOINT, carburetor 2	1	
3	93210-36549	O-RING	2	
4	16G-13569-00	PLUG, blind	1	
5	90467-10039	CLIP	1	
6	91316-06020	BOLT	4	
7	90460-46206	CLAMP, hose	2	
8	43F-14401-00	AIR CLEANER CASE ASSY	1	
9	43F-14453-00	JOINT, air cleaner 1	1	
10	43F-14454-00	JOINT	1	
11	34L-14451-00	ELEMENT, air cleaner	1	
12	34L-14458-00	GUIDE	1	
13	34L-14461-00	ELEMENT, air cleaner 2	1	
14	2J2-14468-00	PLATE, element fitting	1	
15	34L-14437-00	DUCT	1	
16	43F-14412-00	CAP, cleaner case 1	1	
17	98506-05016	SCREW, Pan head	6	
18	92906-05600	WASHER, Plate	6	
19	34L-21621-00	FLAP	1	
20	34L-1442F-00	PROTECTOR	1	
21	97706-40506	SCREW, tapping	2	
22	34L-14426-00	DAMPER 2	1	
23	34L-14425-00	DAMPER 1	1	
24	90460-51059	CLAMP, hose	2	
25	95801-06012	BOLT, flange	3	
26	34K-14452-00	SEAL	1	
27	43F-14467-00	SEAL	1	
28	92990-04200	WASHER, Plain	2	

B11

FIG. 7 INTAKE

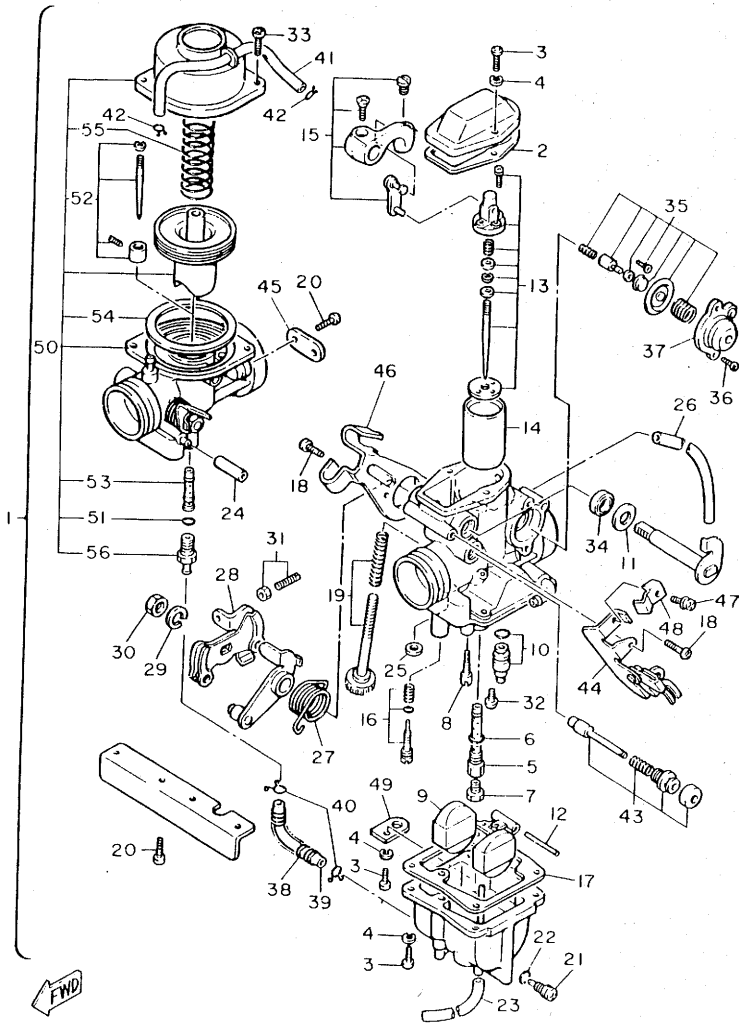


REF. NO.	PART NO.	DESCRIPTION	Q'TY	REMARKS
29	90267-40073	RIVET, blind	2	

B12

43F 300-4070

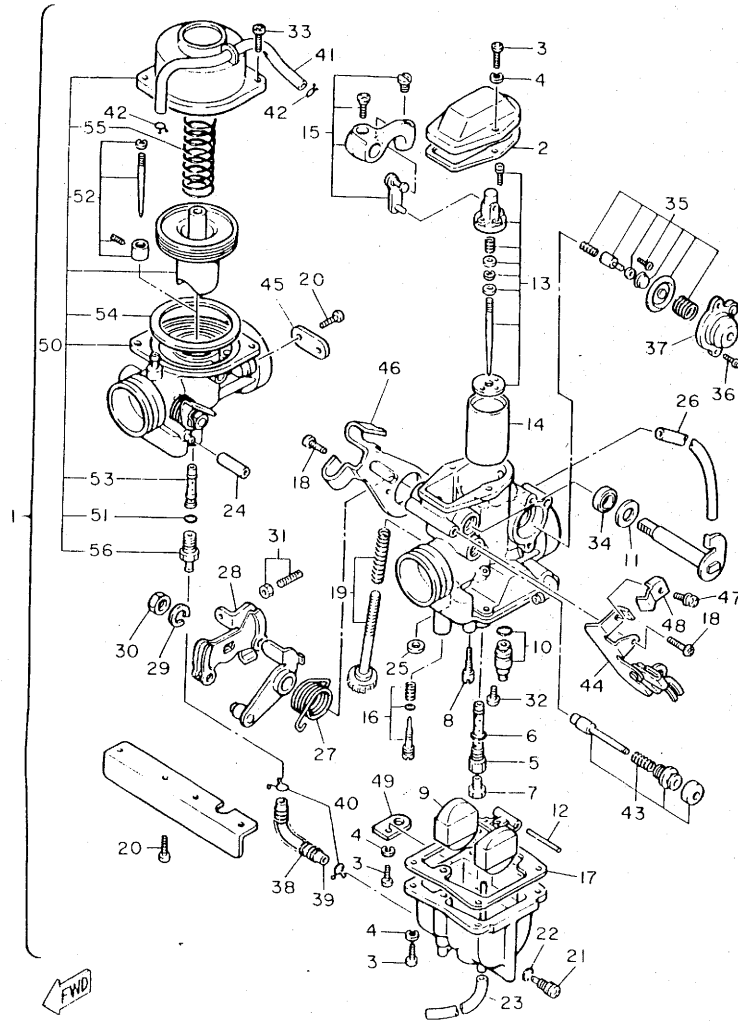
FIG. 8 CARBURETOR



43F300-4080

REF. NO.	PART NO.	DESCRIPTION	Q'TY	REMARKS
1	43F-14301-01	CARBURETOR ASSY 1	1	
2	5Y1-14198-00	•GASKET	1	
3	98501-04014	•SCREW, Pan head	6	
4	92901-04100	•WASHER, sPrInG	6	
5	43F-14341-00	•NOZZLE, main	1	
6	360-24512-00	•GASKET	1	
7	288-14343-65	•JET, main (#130)	1	
8	43F-14342-23	•JET, Pilot (# 46)	1	
9	5Y1-14385-00	•FLOAT	1	
10	5Y1-14107-00	•NEEDLE VALVE SET	1	
11	5Y1-14357-00	•WASHER, Plain	1	
12	6E5-14386-01	•PIN, float	1	
13	34K-1490J-10	•NEEDLE SET	1	
14	5Y1-14312-55	•VALVE, throttle 1	1	
15	5Y1-14203-00	•CABLE CONNECTOR SET	1	
16	43F-14105-00	•PILOT SCREW SET	1	
17	5Y1-14384-00	•GASKET, float chamber	1	
18	5Y1-14325-00	•SCREW, Pan head	3	
19	34K-14103-00	•THROTTLE SCREW SET	1	
20	98501-05010	•SCREW, Pan head	6	
21	5Y1-14115-00	•PLUG, screw	1	
22	5Y1-14397-00	•O-RING	1	
23	5Y1-14396-00	•PIPE	1	
24	5Y1-14349-00	•PIPE	1	
25	5Y1-14536-00	•GASKET	1	
26	34K-14197-00	•PIPE	1	
27	5Y1-14131-00	•SPRING, throttle valve	1	
28	34K-14305-00	•THROTTLE LEVER COMP	1	

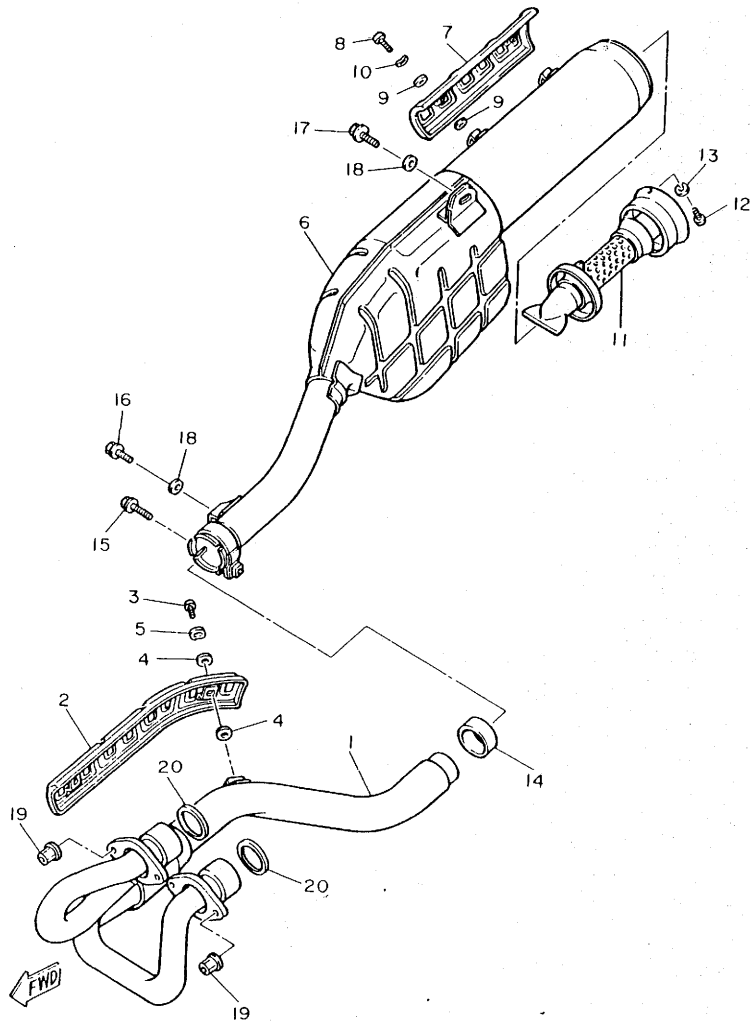
FIG. 8 CARBURETOR



43F300-4080

REF. NO.	PART NO.	DESCRIPTION	Q'TY	REMARKS
29	5Y1-14356-00	•WASHER, sPring	1	
30	5Y1-14358-00	•NUT	1	
31	34K-1490K-00	•STOP SCREW SET	1	
32	98901-04006	•SCREW, bind	1	
33	5Y1-14216-00	•SCREW	2	
34	5Y1-14572-00	•SEAL	2	
35	5Y1-1490A-00	•DIAPHRAGM SET, 1	1	
36	98503-04010	•SCREW, Pan head	2	
37	5Y1-14293-01	•COVER 1	1	
38	5Y1-14556-00	•SPRING	1	
39	5Y1-14148-00	•PIPE	1	
40	5Y1-14137-00	•CLIP	2	
41	5Y1-14149-00	•PIPE	1	
42	5Y1-14159-00	•CLIP	2	
43	5Y1-1410A-00	•STARTER SET	1	
44	34L-14905-00	•LEVER, starter	1	
45	34K-14146-00	•PLATE	1	
46	34K-14571-00	•BRACKET, throttle	1	
47	677-24444-00	•SCREW	1	
48	5Y1-14377-00	•STOPPER	1	
49	42U-14146-00	•PLATE	1	
50	43F-14320-01	•CARBURETOR ASSY 2	1	
51	360-24512-00	••GASKET	1	
52	43F-1490J-01	••NEEDLE SET	1	
53	5Y1-14355-00	••NOZZLE, main 2	1	
54	5Y1-14398-00	••GASKET	1	
55	5Y1-14286-00	••SPRING	1	
56	43F-14343-58	••JET, main (#116)	1	

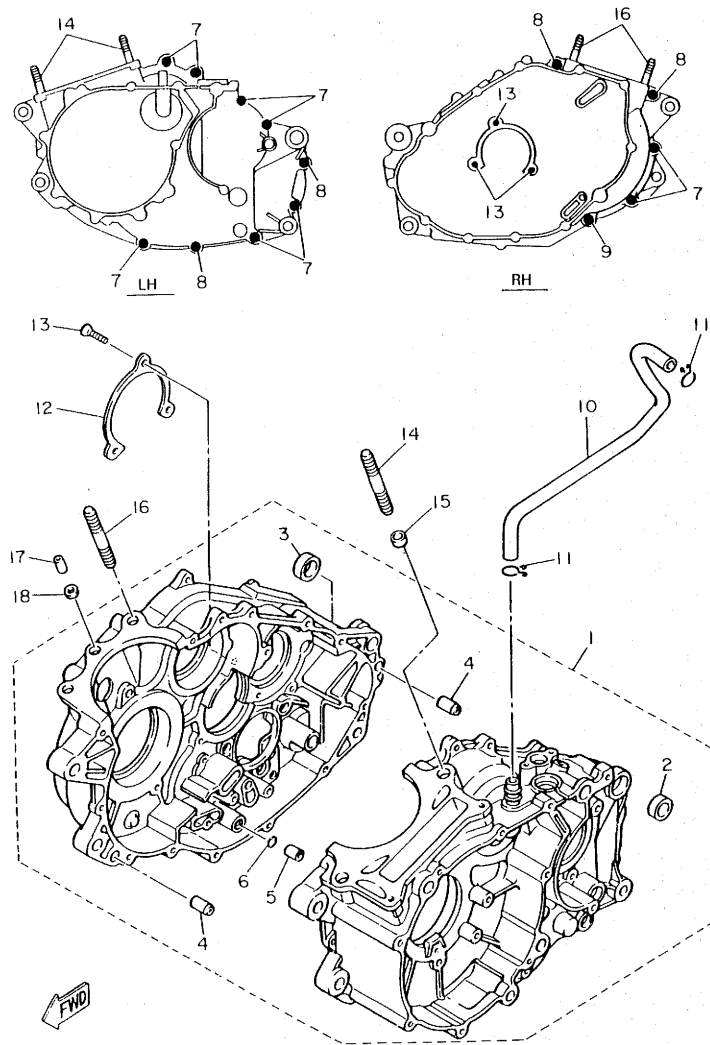
FIG. 9 EXHAUST



49L700-4090

REF. NO.	PART NO.	DESCRIPTION	Q'TY	REMARKS
1	34K-14611-00	PIPE, exhaust 1	1	
2	34K-14628-00	PROTECTOR, exhaust Pipe	1	
3	90164-06017	SCREW, tapping	2	
4	30X-14766-0C	WASHER, Protector	4	
5	90206-06060	WASHER, wave	2	
6	49R-14711-00	MUFFLER 1	1	
7	34L-14728-00	PROTECTOR, muffler 2	1	
8	98906-06010	SCREW, bind	2	
9	583-14766-00	WASHER, Protector	4	
10	90206-06060	WASHER, wave	2	
11	34K-14752-00	PIPE, outlet	1	
12	92501-06008	SCREW, Pan head	1	
13	92990-06100	WASHER, sPring	1	
14	34K-14714-00	GASKET, muffler	1	
15	95816-08045	BOLT, flange	1	
16	95811-08012	BOLT, flange	1	
17	95821-08020	BOLT, flange	1	
18	90201-08326	WASHER, Plate	2	
19	90179-06499	NUT	4	
20	5Y1-14613-00	GASKET, exhaust Pipe	2	

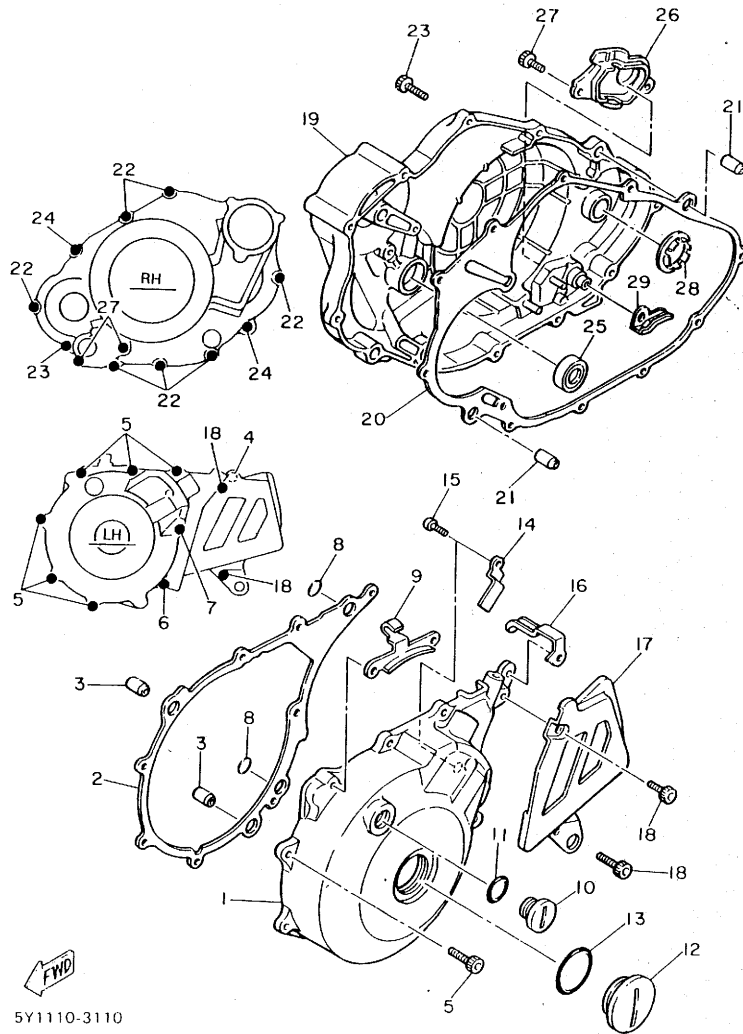
FIG. 10 CRANKCASE



34k 100-3100

REF. NO.	PART NO.	DESCRIPTION	Q'TY	REMARKS
1	34L-15100-04	CRANKCASE ASSY	1	
2	90387-17783	•COLLAR	1	
3	90387-16782	•COLLAR	1	
4	99530-12016	•PIN, dowel	2	
5	99510-08016	•PIN, dowel	1	
6	93210-07135	•O-RING	1	
7	91316-06030	BOLT	9	
8	91316-06045	BOLT	4	
9	91316-06060	BOLT	1	
10	34L-11166-00	PIPE, breather 1	1	
11	90467-14015	CLIP	2	
12	5Y1-15383-00	PLATE, bearing cover	1	
13	92701-06012	SCREW, flat head	3	
14	90116-10087	BOLT, stud	2	
15	99530-12016	PIN, dowel	2	
16	90116-10263	BOLT, stud	2	
17	99510-08016	PIN, dowel	1	
18	90430-08178	GASKET	1	

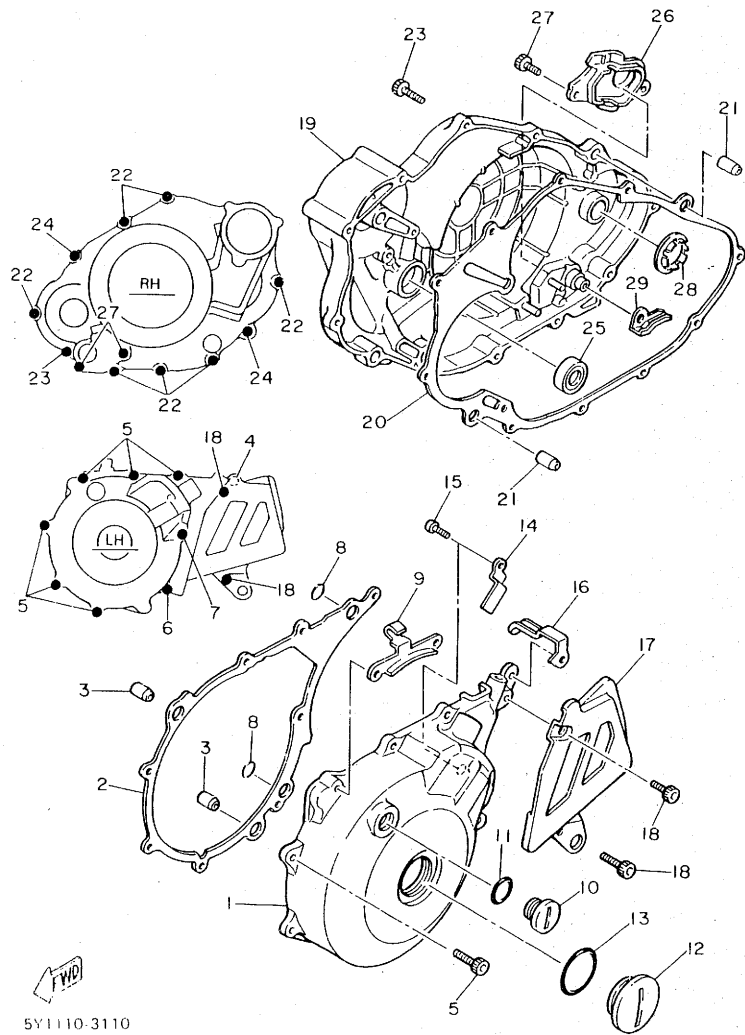
FIG. 11 CRANKCASE COVER 1



5Y1110-3110

REF. NO.	PART NO.	DESCRIPTION	Q'TY	REMARKS
1	34K-15411-00	COVER, crankcase 1	1	
2	5Y1-15451-01	GASKET, crankcase cover 1	1	
3	99530-12016	PIN, dowel	2	
4	91316-06020	BOLT	1	
5	91316-06025	BOLT	6	
6	91316-06040	BOLT	1	
7	91316-06050	BOLT	1	
8	93210-13361	O-RING	2	
9	5Y1-15441-00	HOLDER, clutch cable	1	
10	90340-14079	PLUG, straight screw	1	
11	93210-14369	O-RING	1	
12	90340-36078	PLUG, straight screw	1	
13	93210-36510	O-RING	1	
14	90462-16102	CLAMP	1	
15	92501-06012	SCREW, Pan head	1	
16	90462-10107	CLAMP	1	
17	5Y1-15421-01	COVER, crankcase 2	1	
18	91316-06016	BOLT	2	
19	5Y1-15431-01	COVER, crankcase 3	1	
20	34K-15462-00	GASKET, crankcase cover 3	1	
21	99530-12016	PIN, dowel	2	
22	91316-06025	BOLT	7	
23	91316-06030	BOLT	1	
24	91316-06035	BOLT	2	
25	93101-14092	OIL SEAL	1	
26	5Y1-15417-01	COVER, caP	1	
27	91316-06016	BOLT	2	
28	5Y1-15645-00	SHIM, kick shaft	1	

FIG. 11 CRANKCASE COVER 1

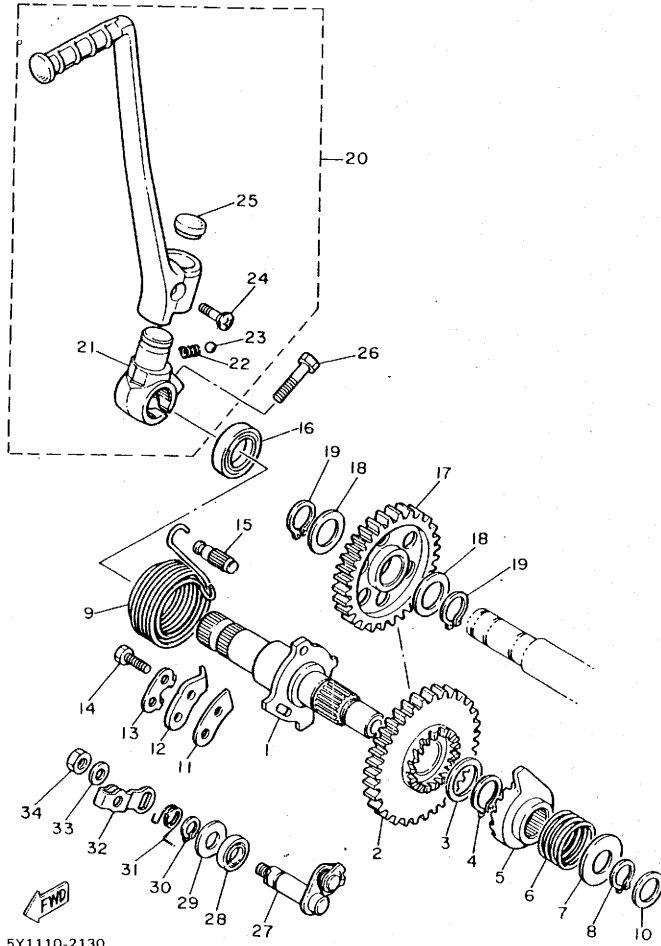


5Y1110-3110

REF. NO.	PART NO.	DESCRIPTION	Q'TY	REMARKS
29	5Y1-1562F-01	PLATE, decomp	1	

C4

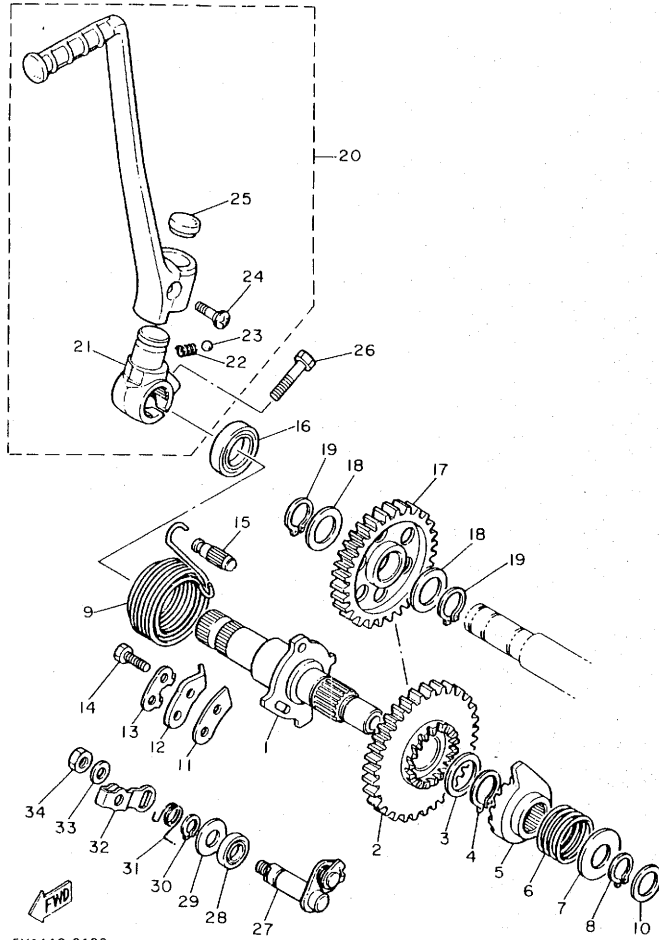
FIG. 12 STARTER



5Y1110-2130

REF. NO.	PART NO.	DESCRIPTION	Q'TY	REMARKS
1	5Y1-15660-01	KICK AXLE ASSY	1	
2	34K-15641-00	GEAR, kick(35T)	1	
3	90201-20685	WASHER, Plate (0.5T)	1	
4	93410-20038	CIRCLIP	1	
5	5Y1-15671-00	WHEEL, ratchet	1	
6	90501-16107	SPRING, compression	1	
7	90201-155K6	WASHER, Plate	1	
8	99009-15400	CIRCLIP	1	
9	90508-32529	SPRING, torsion	1	
10	90201-15701	WASHER, Plate (1.0T)	1	
11	2K7-15668-00	STOPPER	1	
12	214-15674-00	GUIDE, ratchet wheel	1	
13	214-15686-00	WASHER, lock	1	
14	97321-06016	BOLT	2	
15	248-15668-00	STOPPER	1	
16	93102-20108	OIL SEAL	1	
17	5Y1-15651-01	GEAR, kick idle	1	
18	90201-20276	WASHER, Plate (1.0T)	2	
19	99009-20400	CIRCLIP	2	
20	5Y1-15620-02	KICK CRANK ASSY	1	
21	5Y1-15621-01	•BOSS, kick crank	1	
22	90501-12081	•SPRING, compression	1	
23	93507-32009	•BALL	1	
24	90152-06010	•SCREW, countersunk	1	
25	90336-18038	•PLUG, taper	1	
26	97311-08030	BOLT	1	
27	3Y1-1561A-02	DECOMP. LEVER ASSY	1	
28	93102-10207	OIL SEAL	1	

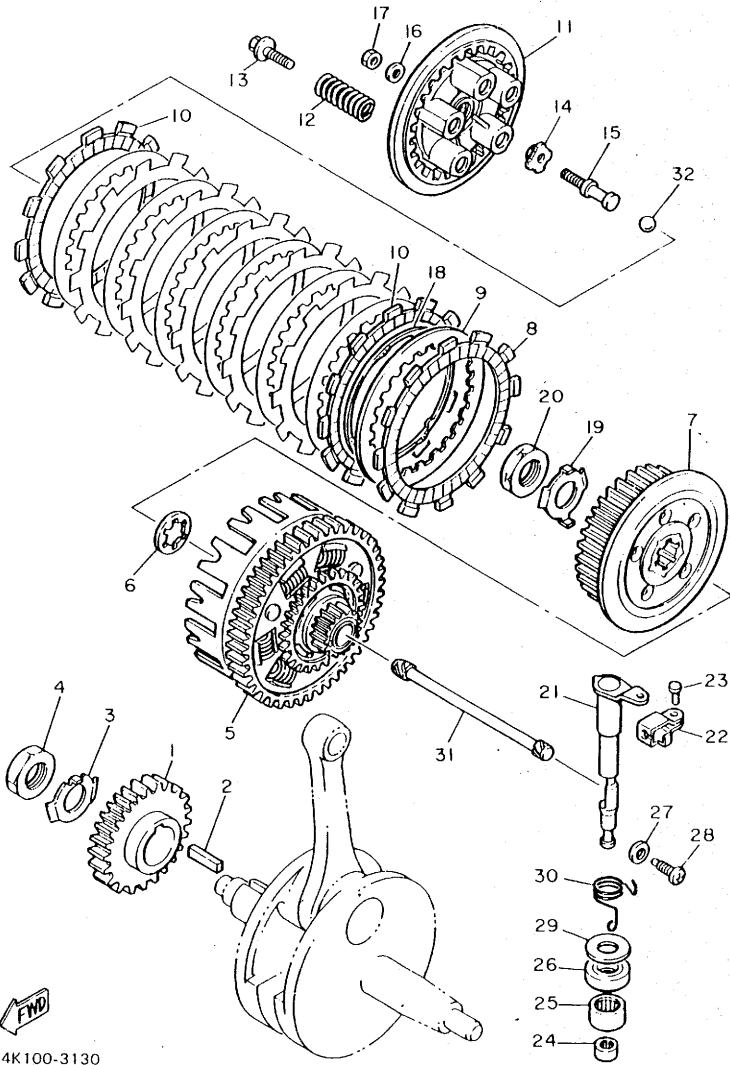
FIG. 12 STARTER



REF. NO.	PART NO.	DESCRIPTION	Q'TY	REMARKS
29	90201-10135	WASHER, Plate	1	
30	99009-10400	CIRCLIP	1	
31	90508-14524	SPRING, torsion	1	
32	5Y1-1561G-00	LEVER, cable	1	
33	92901-06600	WASHER, Plate	1	
34	95311-06700	NUT	1	

C6

FIG. 13 CLUTCH

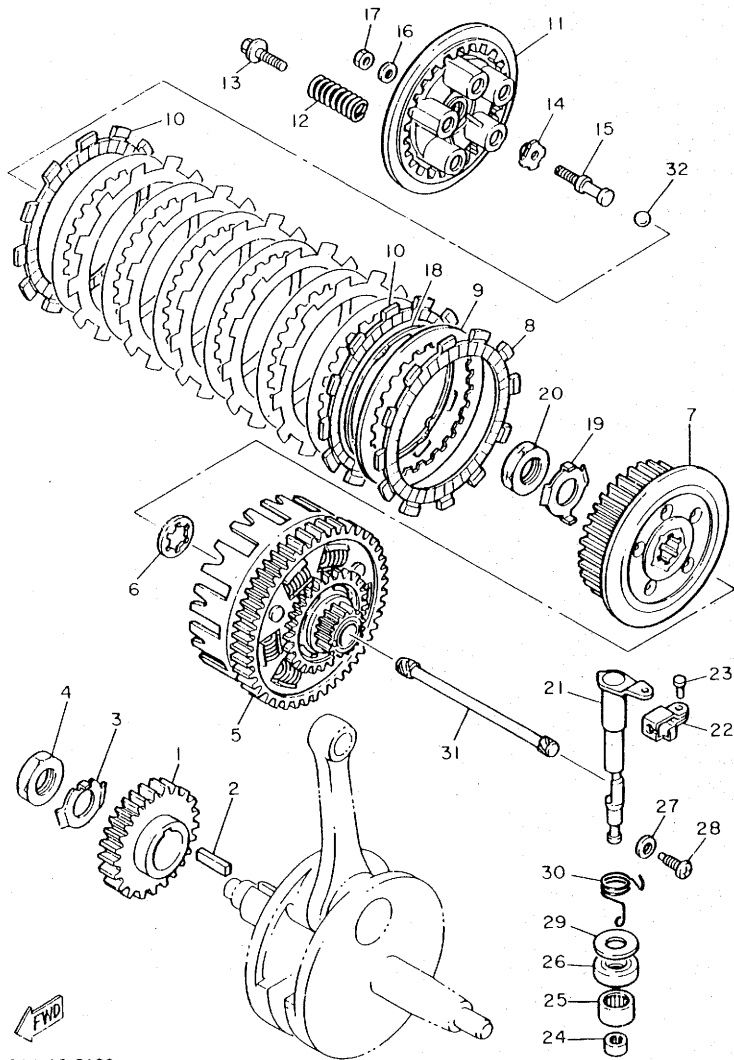


REF. NO.	PART NO.	DESCRIPTION	Q'TY	REMARKS
1	34K-16111-00	GEAR, Primary drive(31T)	1	
2	90282-07042	KEY, straight	1	
3	90215-20197	WASHER, lock	1	
4	90170-20274	NUT	1	
5	34K-16150-0C	PRIMARY DRIVEN GEAR COMP.(74T)	1	
6	3Y1-16154-00	PLATE, thrust 1	1	
7	34K-16371-00	BOSS, clutch	1	
8	5Y1-16321-00	PLATE, friction	6	
9	360-16325-00	PLATE, clutch 2	7	
10	5Y1-16331-01	PLATE, friction 2	2	
11	5Y1-16351-00	PLATE, Pressure 1	1	
12	90501-26148	SPRING, compression	5	
13	90159-06016	SCREW, with washer	5	
14	30X-16358-00	PLATE, Push	1	
15	34K-16356-00	ROD, Push 1	1	
16	92901-06200	WASHER, Plain	1	
17	95301-06600	NUT	1	
18	5Y1-16383-00	SPRING, clutch boss	1	
19	90215-20231	WASHER, lock	1	
20	90170-20327	NUT	1	
21	5Y1-16381-00	PUSH LEVER COMP.	1	
22	214-16389-00	JOINT	1	
23	90243-06016	PIN	1	
24	93317-11020	BEARING, cylindrical	1	
25	93315-11720	BEARING, cylindrical	1	
26	93102-17148	OIL SEAL	1	
27	90430-08119	GASKET	1	
28	90149-08067	SCREW	1	

FWD
34K100-3130

C7

FIG. 13 CLUTCH

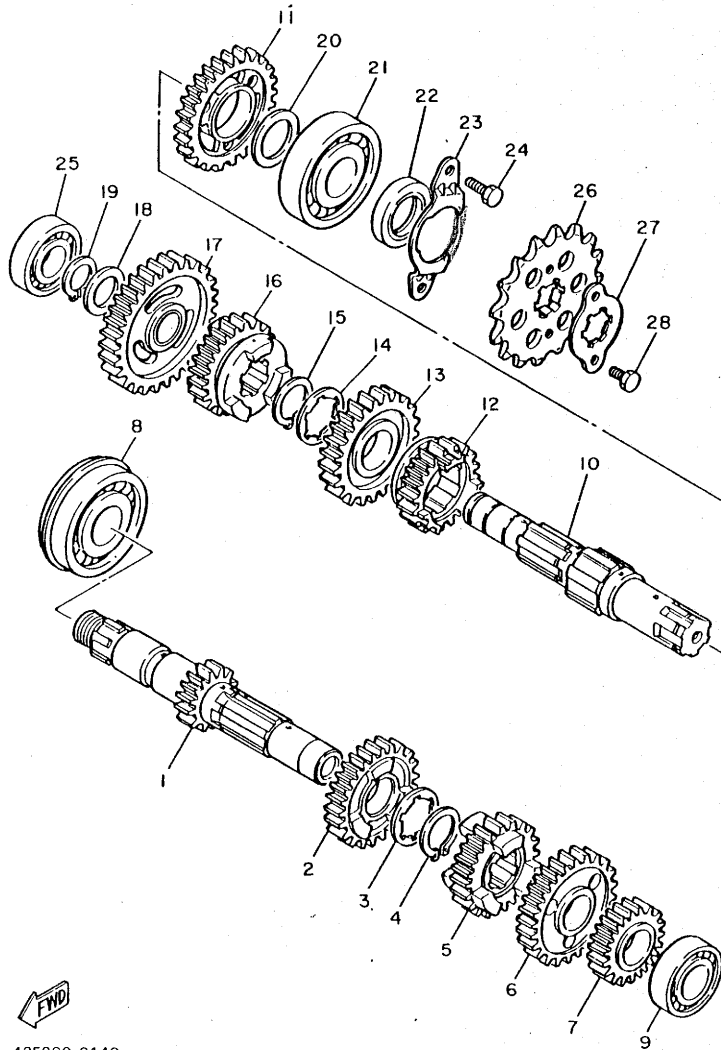


REF. NO.	PART NO.	DESCRIPTION	Q'TY	REMARKS
29	90201-17327	WASHER, Plate	1	
30	90508-14526	SPRING, torsion	1	
31	5Y1-16357-00	ROD, Push 2	1	
32	93515-32029	BALL	1	

34K100-3130

C8

FIG. 14 TRANSMISSION



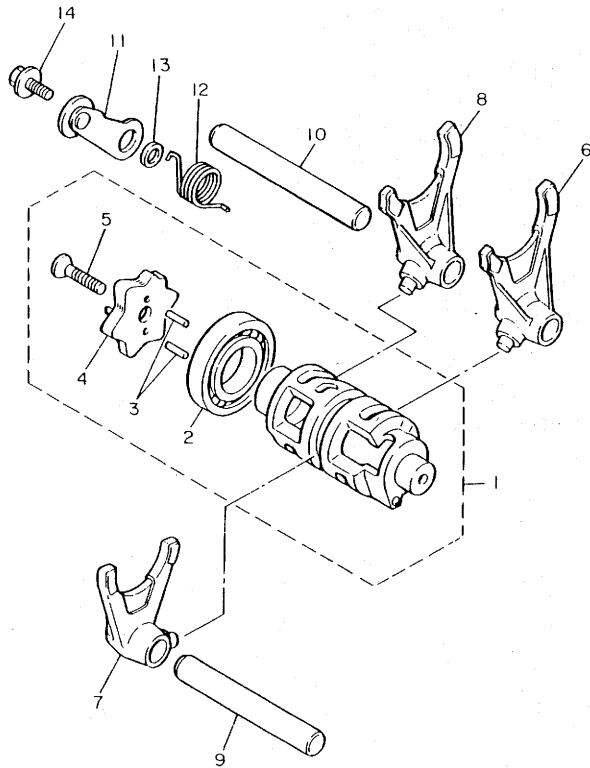
REF. NO.	PART NO.	DESCRIPTION	Q'TY	REMARKS
1	34L-17411-00	AXLE, main(12T)	1	
2	34K-17141-00	GEAR, 4th Pinion(22T)	1	
3	90209-22191	WASHER	1	
4	93440-25084	CIRCLIP	1	
5	5Y1-17131-00	GEAR, 3rd Pinion(20T)	1	
6	1VJ-17151-01	GEAR, 5th Pinion (27T)	1	
7	34K-17121-01	GEAR, 2nd Pinion (17T)	1	
8	93306-30540	BEARING	1	
9	93306-00431	BEARING	1	
10	34K-17402-00	DRIVE AXLE ASSY	1	
11	5Y1-17221-01	GEAR, 2nd wheel (27T)	1	
12	5Y1-17251-00	GEAR, 5th wheel(21T)	1	
13	1VJ-17231-00	GEAR, 3rd wheel (24T)	1	
14	90209-22191	WASHER	1	
15	93440-25084	CIRCLIP	1	
16	55U-17241-00	GEAR, 4th wheel (21T)	1	
17	34L-17211-00	GEAR, 1st wheel(31T)	1	
18	90201-20276	WASHER, Plate (1.0T)	1	
19	99009-20400	CIRCLIP	1	
20	117-15644-00	SHIM	1	
21	93306-30535	BEARING	1	
22	93102-25226	OIL SEAL	1	
23	5Y1-17471-00	PLATE, cover	1	
24	97321-06014	BOLT	2	
25	93306-00426	BEARING	1	
26	5Y1-17461-50	SPROCKET, drive (15T)	1	
27	3Y1-17456-00	HOLDER, sProcket	1	
28	97322-06010	BOLT	2	



43F300-6140

C9

FIG. 15 SHIFT CAM. FORK



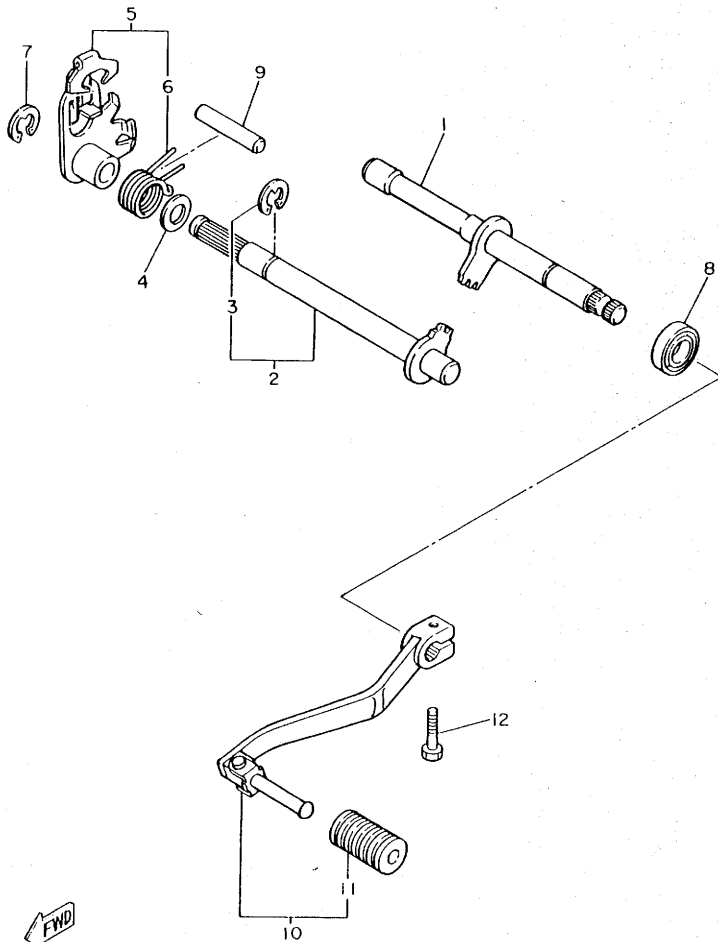
REF. NO.	PART NO.	DESCRIPTION	Q'TY	REMARKS
1	5Y1-18540-00	SHIFT CAM ASSY	1	
2	93316-00503	•BEARING, cylindrical	1	
3	93604-10011	•PIN, dowel	2	
4	5Y1-18185-00	•SEGMENT	1	
5	90151-06017	•SCREW, countersunk	1	
6	5Y1-18511-00	FORK, shift 1	1	
7	5Y1-18512-00	FORK, shift 2	1	
8	5Y1-18513-00	FORK, shift 3	1	
9	34K-18531-00	BAR, shift fork guide 1	1	
10	34K-18535-00	BAR, shift fork guide 2	1	
11	34K-18140-00	STOPPER LEVER ASSY	1	
12	90508-29527	SPRING, torsion	1	
13	90387-063F7	COLLAR	1	
14	90159-06078	SCREW, with washer	1	



34K100-3150

C10

FIG. 16 SHIFT SHAFT

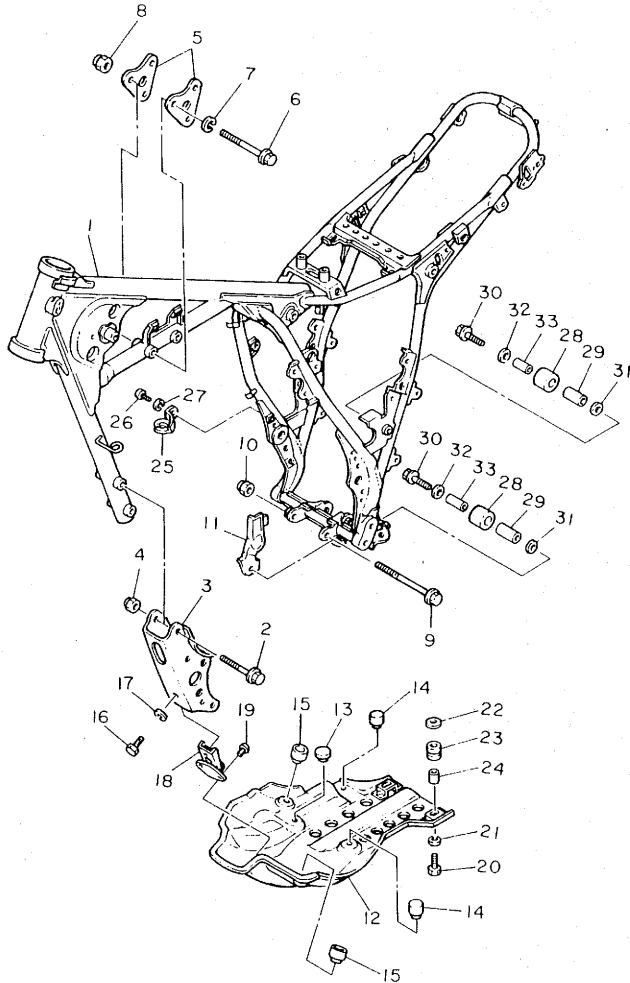


REF. NO.	PART NO.	DESCRIPTION	Q'TY	REMARKS
1	43F-18102-01	SHIFT SHAFT ASSY 2	1	
2	5Y1-18101-01	SHIFT SHAFT ASSY	1	
3	99001-10600	•CIRCLIP	1	
4	90201-12474	WASHER, Plate	1	
5	34K-18120-00	SHIFT LEVER ASSY	1	
6	90508-29629	•SPRING, torsion	1	
7	99001-09600	CIRCLIP	1	
8	93102-12106	OIL SEAL	1	
9	93608-33046	PIN, dowel	1	
10	34L-18110-00	SHIFT PEDAL ASSY	1	
11	1W6-18113-00	•COVER, shift Pedal	1	
12	97316-06020	BOLT	1	

43F300-4160

C11

FIG. 17 FRAME



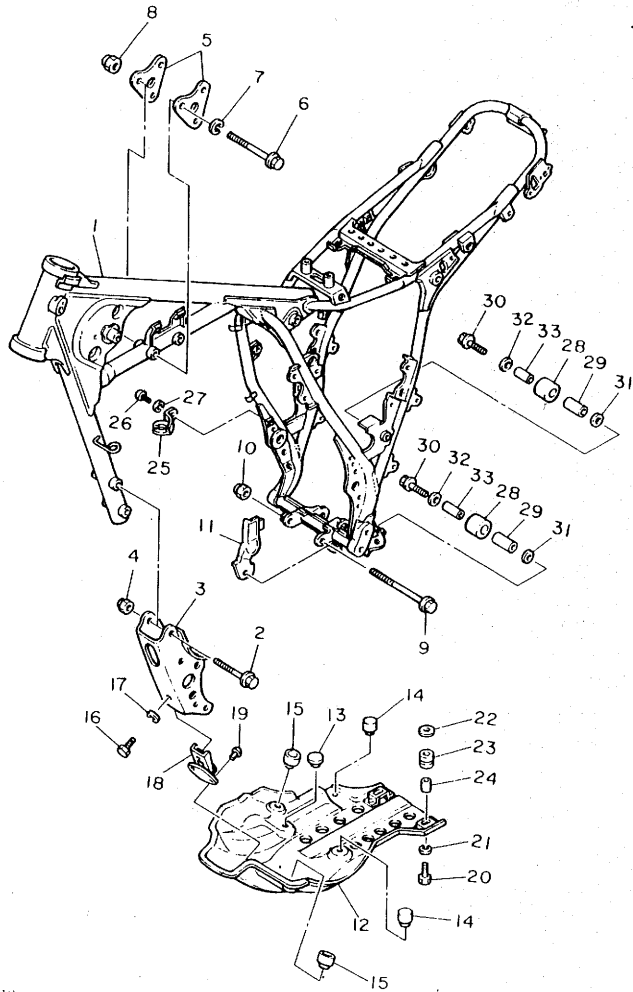
REF. NO.	PART NO.	DESCRIPTION	Q'TY	REMARKS
1	43F-21110-01-FH	FRAME COMP.	1	fire red
2	90105-10286	BOLT, washer based	4	
3	34L-21316-00-FH	STAY, engine 3	1	fire red
4	90185-10060	NUT, self-locking	4	
5	34L-21315-00	STAY, engine 2	2	
6	97311-10080	BOLT	3	
7	92901-10100	WASHER, spring	3	
8	90185-10060	NUT, self-locking	3	
9	95811-10100	BOLT, flange	1	
10	90185-10060	NUT, self-locking	1	
11	34L-2176E-01	PLATE	1	
12	34L-21471-00	PROTECTOR, engine	1	
13	2J5-21732-00	SEAL 1	1	
14	4N0-27114-00	STOPPER, main stand	2	
15	34L-21485-00	DAMPER, rubber 1	2	
16	97306-08016	BOLT	1	
17	92906-08100	WASHER, spring	1	
18	34L-21486-00	DAMPER 2	1	
19	90267-48079	RIVET, blind	2	
20	97306-06025	BOLT	2	
21	92906-06100	WASHER, spring	2	
22	90201-06067	WASHER, plate	2	
23	90480-14229	GROMMET	2	
24	90387-060A7	COLLAR	2	
25	5Y1-21441-00	BRACKET, stop switch	1	
26	92501-06012	SCREW, Pan head	1	
27	92990-06100	WASHER, spring	1	
28	30X-22178-00	TENSIONER	2	



346332 3170

C12

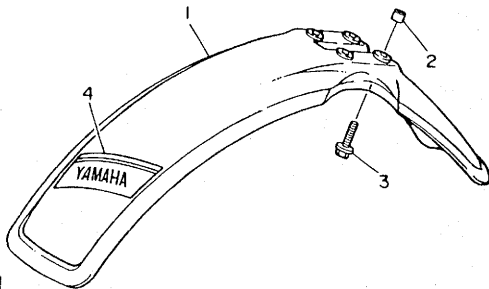
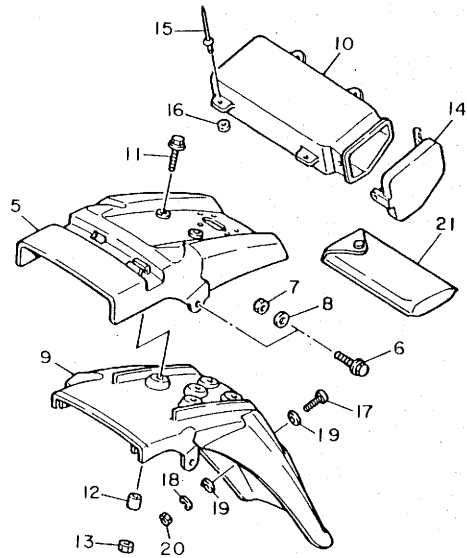
FIG. 17 FRAME



REF. NO.	PART NO.	DESCRIPTION	Q'TY	REMARKS
29	4V4-22184-00	BUSH	2	
30	90109-08705	BOLT	2	
31	90201-13409	WASHER, Plate	2	
32	90201-08753	WASHER, Plate	2	
33	90387-085E1	COLLAR	2	

341332 3170

FIG. 18 FENDER

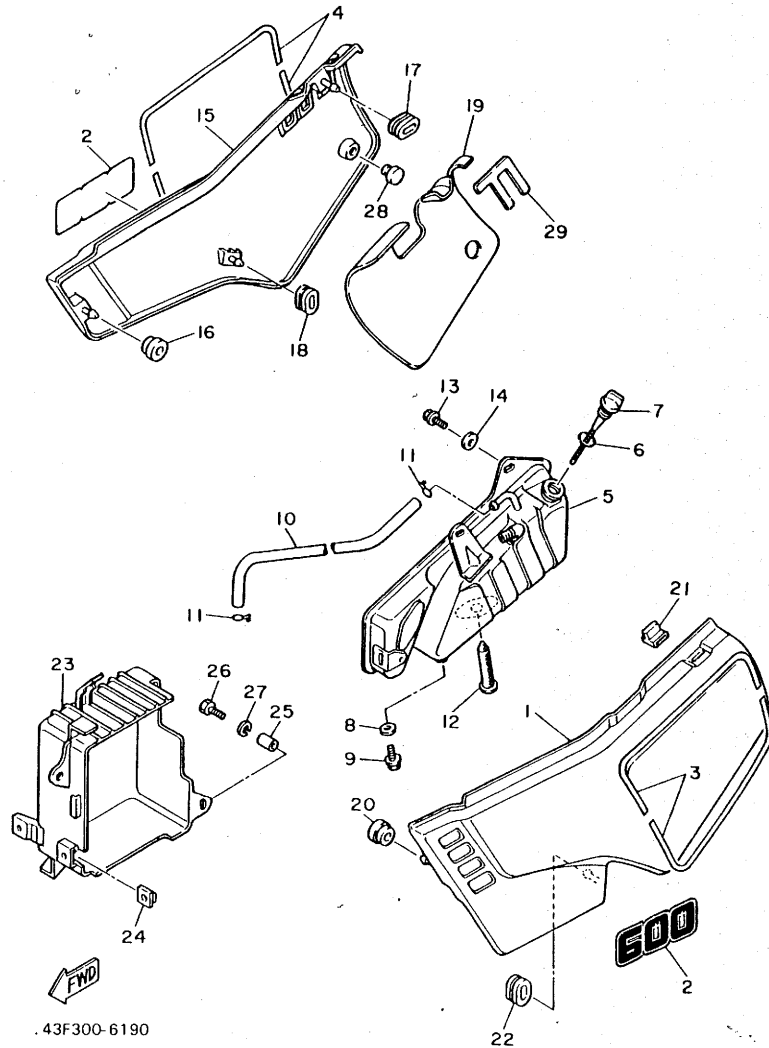


43F300-6180

REF. NO.	PART NO.	DESCRIPTION	Q'TY	REMARKS
1	30X-21511-00	FENDER, front	1	UR clean white
	43F-21511-10	FENDER, front	1	UR yamaha black
2	90387-06681	COLLAR	4	
3	90119-06063	BOLT, with washer	4	
4	43F-21575-20	SEAL 1	1	UR for clean white
	43F-21575-30	SEAL 1	1	UR for yamaha black
5	34L-21611-20	FENDER, rear	1	UR clean white
	43F-21611-10	FENDER, rear	1	UR yamaha black
6	95806-08030	BOLT, flange	2	
7	95302-08600	NUT	2	
8	90201-08100	WASHER, Plate	2	
9	34L-21685-00	BRACKET, license	1	
10	34L-21170-00	BOX CDMP.	1	
11	95806-06030	BOLT, flange	2	
12	90387-07391	COLLAR	2	
13	95302-06600	NUT	2	
14	34L-28185-00	LID	1	
15	90267-32070	RIVET, blind	4	
16	92990-03200	WASHER, Plain	4	
17	92501-06020	SCREW, Pan head	1	
18	92990-06100	WASHER, Spring	1	
19	90201-06336	WASHER, Plate	2	
20	95302-06600	NUT	1	
21	43F-28100-01	TOOL KIT	1	

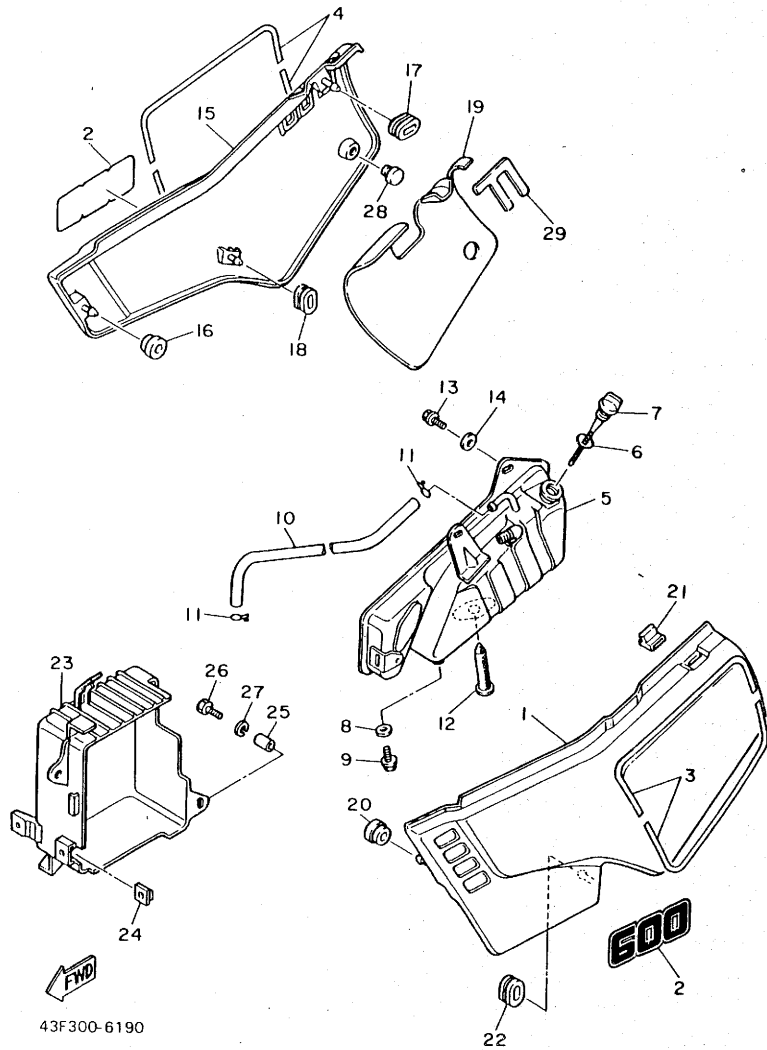
C14

FIG. 19 SIDE COVER. OIL TANK



REF. NO.	PART NO.	DESCRIPTION	Q'TY	REMARKS
1	43F-21711-00-1X	COVER, side 1	1	UR clean white/black
	43F-21711-10-1X	COVER, side 1	1	UR low gloss black/black
2	43F-21781-20	EMBLEM 1	2	UR for white
	43F-21781-30	EMBLEM 1	2	UR for yamaha black
3	43F-21782-00	EMBLEM 2	1	
4	43F-21783-00	EMBLEM 3	1	
5	34L-21750-02	OIL TANK ASSY	1	
6	93210-21190	O-RING	1	
7	34L-21761-01	GAUGE, level	1	
8	90430-08119	GASKET	1	
9	95801-08012	BOLT, flange	1	
10	90445-11753	HOSE	1	
11	90467-10008	CLIP	2	
12	34L-21756-01	NET, filter	1	
13	95822-08012	BOLT, flange	3	
14	90201-08730	WASHER, Plate	1	
15	43F-21721-00-1X	COVER, side 2	1	UR clean white/black
	43F-21721-10-1X	COVER, side 2	1	UR low gloss black/black
16	90480-13197	GROMMET	1	
17	90480-01141	GROMMET	1	
18	90480-01385	GROMMET	1	
19	43F-2174A-00	INSULATOR, side cover	1	
20	90480-13197	GROMMET	1	
21	43F-21773-00	GROMMET	1	
22	90480-01385	GROMMET	1	
23	34L-2177G-00	BOX, battery	1	
24	4H7-14484-00	PLATE, cleaner case fitting	2	
25	90387-06500	COLLAR	2	

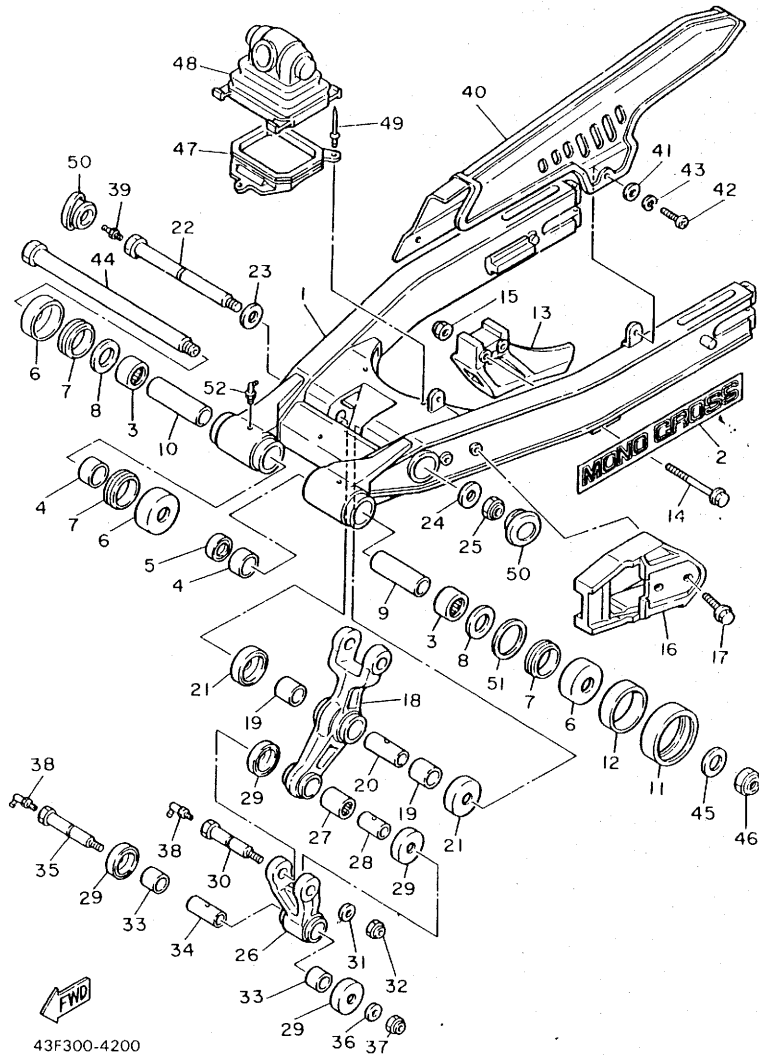
FIG. 19 SIDE COVER, OIL TANK



REF. NO.	PART NO.	DESCRIPTION	Q'TY	REMARKS
26	97301-06016	BOLT	2	
27	92990-06100	WASHER, sPring	2	
28	30X-24768-00	STÖPPER	1	
29	43F-2174A-10	INSULATOR, side cover	1	

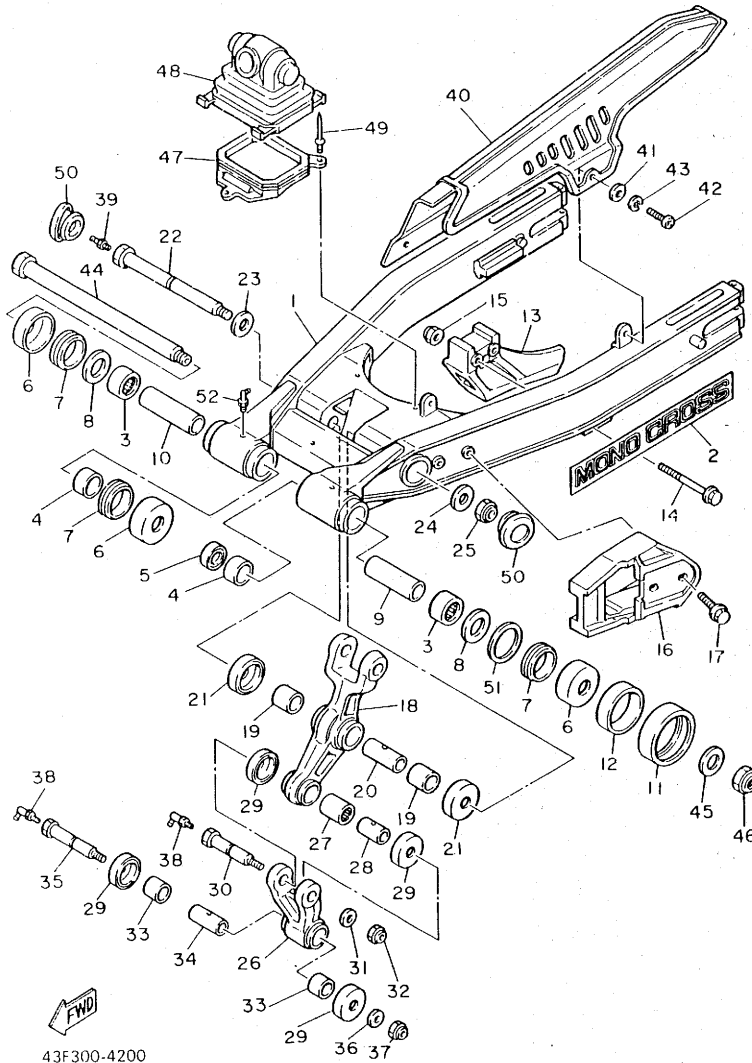
D2

FIG. 20 REAR ARM



REF. NO.	PART NO.	DESCRIPTION	Q'TY	REMARKS
1	43F-22110-01	REAR ARM COMP.	1	
2	46X-2218A-00	EMBLEM, rear arm	2	
3	93317-32231	BEARING, cylindrical	1	
4	90380-22111	BUSH, solid	2	
5	93106-22019	OIL SEAL	1	
6	2K6-22128-01	COVER, thrust 1	3	
7	93108-35004	OIL SEAL	3	
8	90201-244A8	WASHER, Plate (1.95T)	2	
9	34L-22123-00	BUSH 1	1	
10	34L-22124-00	BUSH 2	1	
11	5X6-22151-10	SEAL, Guard	1	
12	90387-440G3	COLLAR	1	
13	34L-22153-00	GUARD, chain	1	
14	95801-06050	BOLT, flange	2	
15	95701-06500	NUT, flange	2	
16	34L-22147-00	PROTECTOR, chain	1	
17	90119-06101	BOLT, with washer	2	
18	34L-2217A-00	ARM, relay	1	
19	90386-20120	BUSH	2	
20	90380-14095	BUSH, solid	1	
21	34L-22128-00	COVER, thrust 1	2	
22	90109-120A3	BOLT	1	
23	90201-140G9	WASHER, Plate	1	
24	90201-120A5	WASHER, Plate	1	
25	90185-12119	NUT, self-locking	1	
26	34L-2217F-00	ROD, connecting 1	1	
27	93315-31732	BEARING, cylindrical	1	
28	90387-121H1	COLLAR	1	

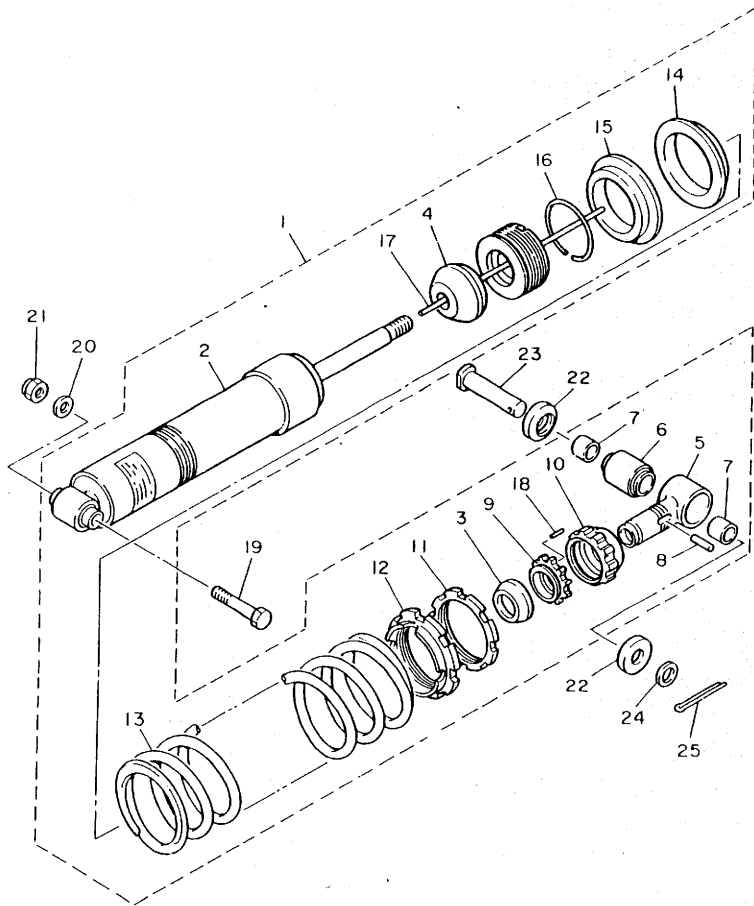
FIG. 20 REAR ARM



REF. NO.	PART NO.	DESCRIPTION	Q'TY	REMARKS
29	23X-22129-00	COVER, thrust 2	4	
30	90109-10759	BOLT	1	
31	90201-100E9	WASHER, Plate	1	
32	90185-10120	NUT, self-locking	1	
33	90386-20123	BUSH	2	
34	90387-122J6	COLLAR	1	
35	90109-10760	BOLT	1	
36	90201-100F7	WASHER, Plate	1	
37	90185-10120	NUT, self-locking	1	
38	93700-06005	NIPPLE, grease	1	
39	93700-06004	NIPPLE, grease	2	
40	34L-22311-01	CASE, chain	1	
41	90201-062A8	WASHER, Plate	2	
42	92506-06012	SCREW, Pan head	2	
43	92906-06100	WASHER, spring	2	
44	34K-22141-01	SHAFT, Pivot	1	
45	90201-15238	WASHER, Plate	1	
46	90185-14070	NUT, self-locking	1	
47	34L-22166-00	SUPPORT, boot	1	
48	34L-22189-00	BOOT, rubber	1	
49	90267-32072	RIVET, blind	3	
50	34L-22117-00	CAP	2	
51	90201-251F6	WASHER, Plate	1	UN
52	93700-06005	NIPPLE, grease	2	

D4

FIG. 21 REAR SUSPENSION



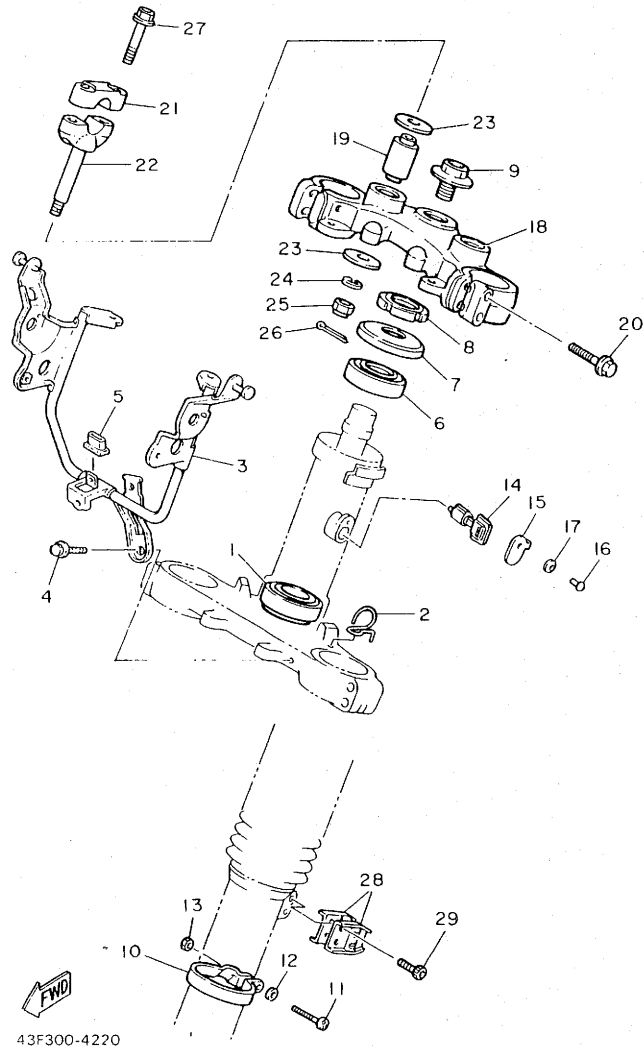
REF. NO.	PART NO.	DESCRIPTION	Q'TY	REMARKS
1	50T-22210-00-6W	SHOCK ABSORBER ASSY, rear	1	native red
2	50T-22401-00	•DAMPER SUB ASSY	1	
3	3R4-22221-01	•COVER	1	
4	50T-22493-00	•BUMP, stop	1	
5	50T-22409-00	•UPPER BRACKET SUB ASSY	1	
6	34L-22226-00	•BUSH, shock absorber lower	1	
7	90380-14130	•BUSH, solid	2	
8	93604-26132	•PIN, dowel	1	
9	50T-22497-00	•NUT, adjusting	1	
10	50T-22211-00	•COVER	1	
11	50T-22215-00	•RING, cover	1	
12	50T-22213-00	•SEAT, sPring upper	1	
13	34L-22212-00-6W	•SPRING	1	native red
14	50T-22224-00	•GUIDE, sPring 2	1	
15	3Y1-22223-00	•SEAT, sPring lower	1	
16	93440-48079	•CIRCLIP	1	
17	93604-21193	•PIN, dowel	1	
18	93602-11144	•PIN, dowel	1	
19	90101-12498	BOLT	1	
20	90201-12362	WASHER, Plate	1	
21	90185-12080	NUT, self-locking	1	
22	34L-22129-00	COVER, thrust 2	2	
23	90240-14106	PIN, clevis	1	
24	92901-14600	WASHER	1	
25	91401-30025	PIN, cotter	1	

FWD

43F300-4210

D5

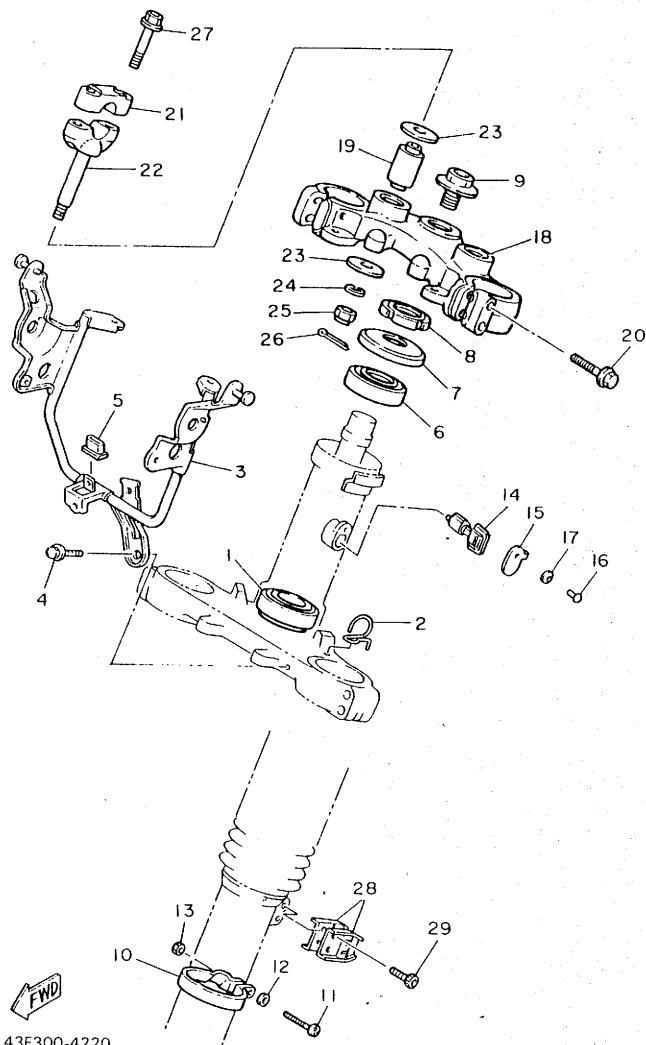
FIG. 22 STEERING



REF. NO.	PART NO.	DESCRIPTION	Q'TY	REMARKS
1	93332-00008	BEARING	1	
2	36X-2331E-00	GUIDE, cable	1	
3	43F-23174-00	STAY, headlight	1	
4	95806-06012	BOLT, flange	1	
5	30X-23445-00	DAMPER	1	
6	93332-00023	BEARING	1	
7	1W1-23416-00	COVER, ball race 2	1	
8	90179-25033	NUT	1	
9	90105-14102	BOLT, washer based	1	
10	34L-23318-00	HOLDER, cable 1	1	
11	98501-05020	SCREW, Pan head	1	
12	92901-05600	WASHER, Plate	1	
13	95301-05600	NUT	1	
14	*	STEERING LOCK ASSY	1	LM
15	134-23484-10	CAP, handle lock	1	
16	90269-04003	RIVET	1	
17	90208-04029	WASHER, conical spring	1	
18	34L-23435-00-98	CROWN, handle	1	low gloss black
19	3Y6-23434-00	HOLDER, damper	2	
20	95826-08040	BOLT, flange	4	
21	1E6-23441-00	HOLDER, handle upper	2	
22	3Y6-23442-00-98	HOLDER, handle lower	2	low gloss black
23	90201-100A1	WASHER, Plate	4	
24	92901-10100	WASHER, spring	2	
25	95301-10700	NUT	2	
26	90468-12006	CLIP	2	
27	95826-08035	BOLT, flange	4	
28	90465-14242	CLAMP	2	

D6

FIG. 22 STEERING

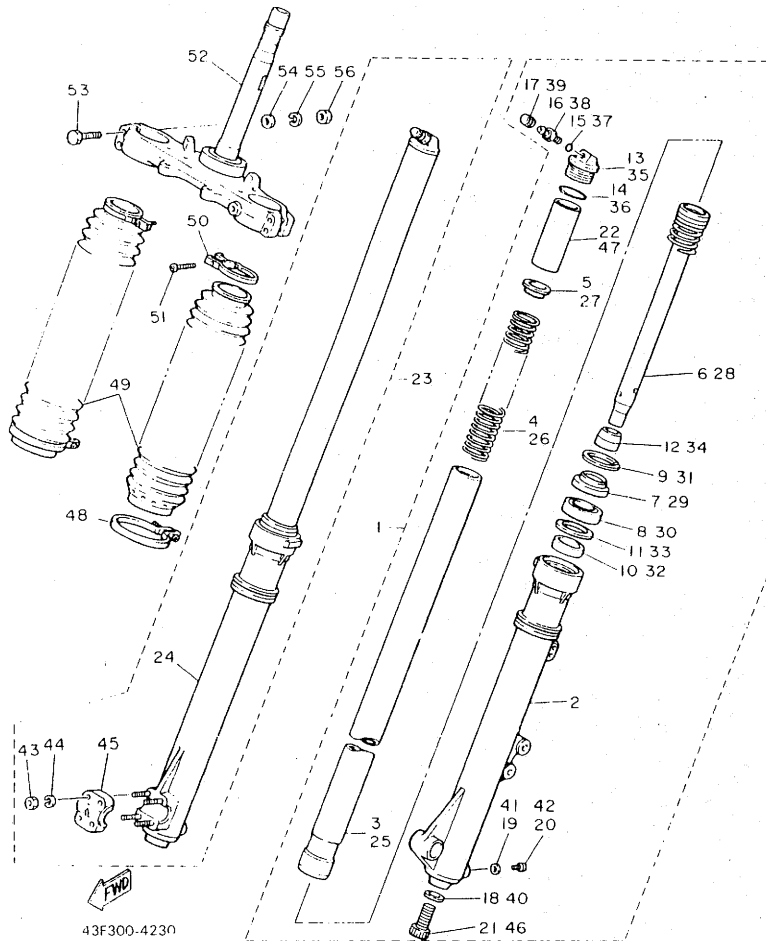


43F300-4220

REF. NO.	PART NO.	DESCRIPTION	Q'TY	REMARKS
29	91316-06012	BOLT	2	

D7

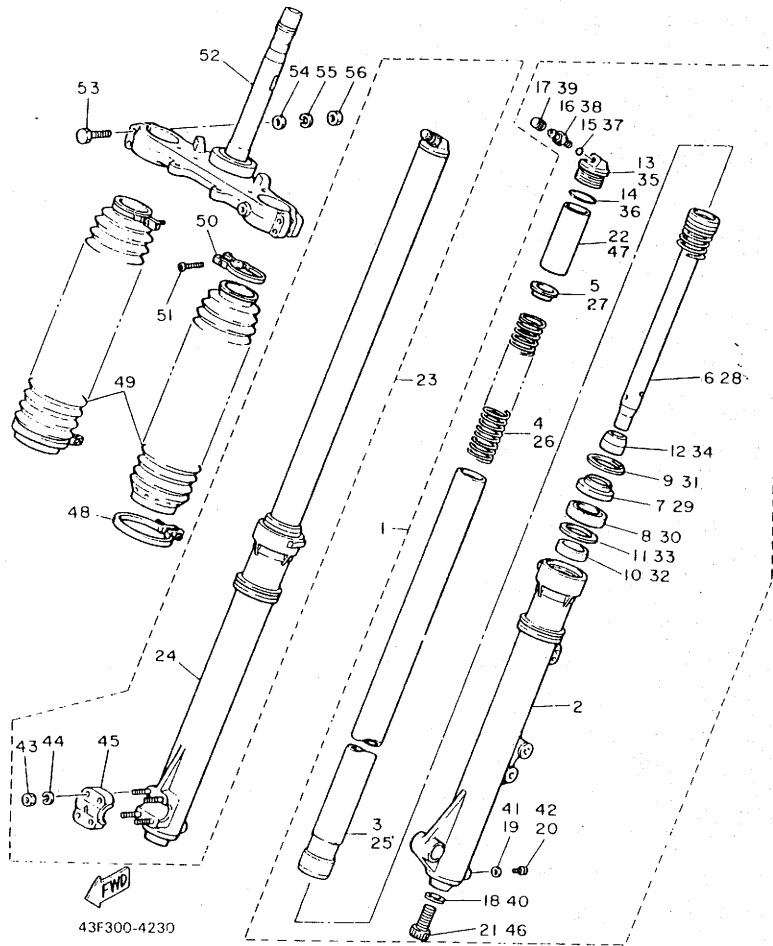
FIG. 23 FRONT FORK



REF. NO.	PART NO.	DESCRIPTION	Q'TY	REMARKS
1	43F-W2313-00	FRONT FORK ASSY (L.H)	1	
2	43F-23126-10-38	•TUBE, outer 1	1	
3	43F-23110-10	•INNER TUBE COMP.1	1	
4	43F-23141-10	•SPRING, front fork	1	
5	43F-23142-10	•SEAT, sPring uPPer	1	
6	43F-23170-10	•CYLINDER COMP., front fork	1	
7	43F-23144-10	•SEAL, dust	1	
8	43F-23145-10	•OIL SEAL	1	
9	26H-23156-00	•CLIP, oil seal	1	
10	36Y-23125-10	•METAL, slide 1	1	
11	36Y-23146-10	•WASHER, oil seal	1	
12	4V4-23173-L0	•SPINDLE, taPer	1	
13	43F-23111-10	•BOLT, caP	1	
14	43F-23188-10	•O-RING	1	
15	3J2-23147-00	•O-RING	1	
16	4V4-23190-L0	•AIR VALVE COMP.	1	
17	509-23184-L0	•CAP, air valve	1	
18	4V4-23158-L0	•GASKET	1	
19	122-23129-00	•GASKET, drain Plug	1	
20	122-23119-01	•PLUG, drain	1	
21	4V4-23181-L0	•BOLT, hexaGon socket head	1	
22	43F-23118-10	•SPACER	1	
23	43F-W2314-00	FRONT FORK ASSY (R.H)	1	
24	43F-23136-10-38	•TUBE, outer 2	1	
25	43F-23110-10	•INNER TUBE COMP.1	1	
26	43F-23141-10	•SPRING, front fork	1	
27	43F-23142-10	•SEAT, sPring uPPer	1	
28	43F-23170-10	•CYLINDER COMP., front fork	1	

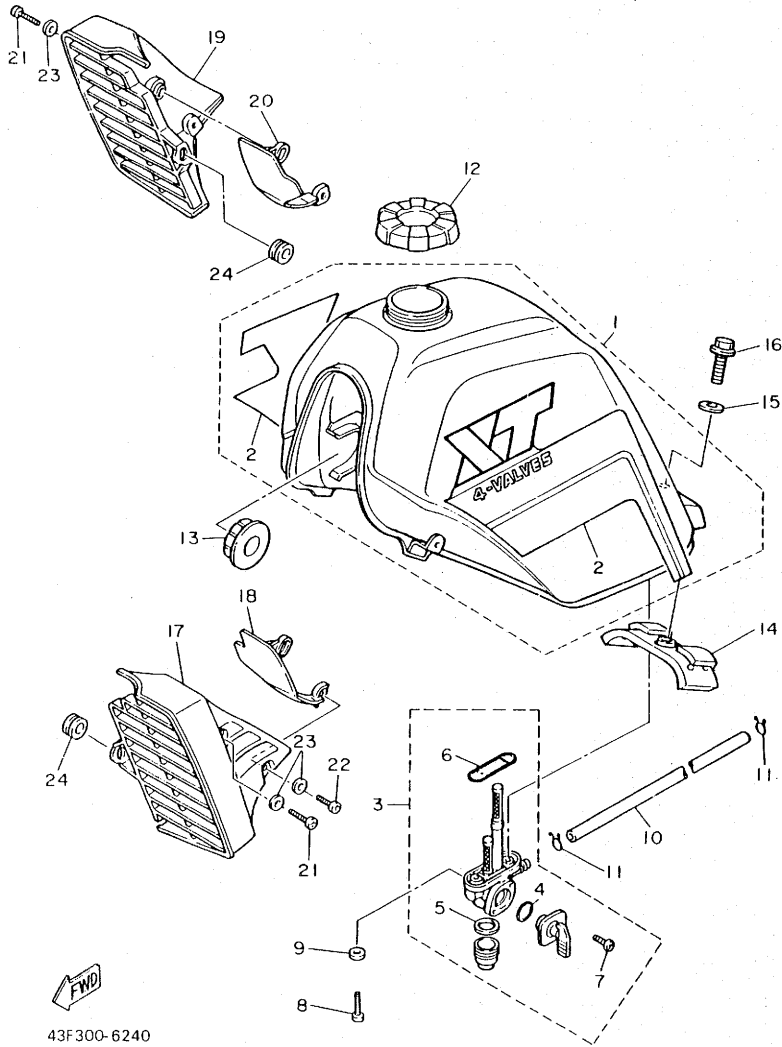
D8

FIG. 23 FRONT FORK



REF. NO.	PART NO.	DESCRIPTION	Q'TY	REMARKS
29	43F-23144-10	•SEAL, dust	1	
30	43F-23145-10	•OIL SEAL	1	
31	26H-23156-00	•CLIP, oil seal	1	
32	36Y-23125-10	•METAL, slide 1	1	
33	36Y-23146-10	•WASHER, oil seal	1	
34	4V4-23173-L0	•SPINDLE, taPer	1	
35	43F-23111-10	•BOLT, caP	1	
36	43F-23188-10	•O-RING	1	
37	3J2-23147-00	•O-RING	1	
38	4V4-23190-L0	•AIR VALVE COMP.	1	
39	509-23184-L0	•CAP, air valve	1	
40	4V4-23158-L0	•GASKET	1	
41	122-23129-00	•GASKET, drain Plug	1	
42	122-23119-01	•PLUG, drain	1	
43	95311-06600	•NUT	4	
44	92990-06100	•WASHER, sPring	4	
45	4V2-23167-L0	•HOLDER, axle	1	
46	4V4-23181-L0	•BOLT, hexaGon socket head	1	
47	43F-23118-10	•SPACER	1	
48	43M-23489-L0	BAND	2	
49	43F-23191-10	BOOT	2	chappy red
50	43M-23192-L0	BAND	2	
51	98506-04018	SCREW, Pan head	2	
52	43F-23340-30-39	UNDER BRACKET COMP.	1	clear no buffing
53	90109-08397	BOLT	4	
54	90201-08544	WASHER, Plate	4	
55	92990-08100	WASHER, sPring	4	
56	95311-08600	NUT	4	

FIG. 24 FUEL TANK

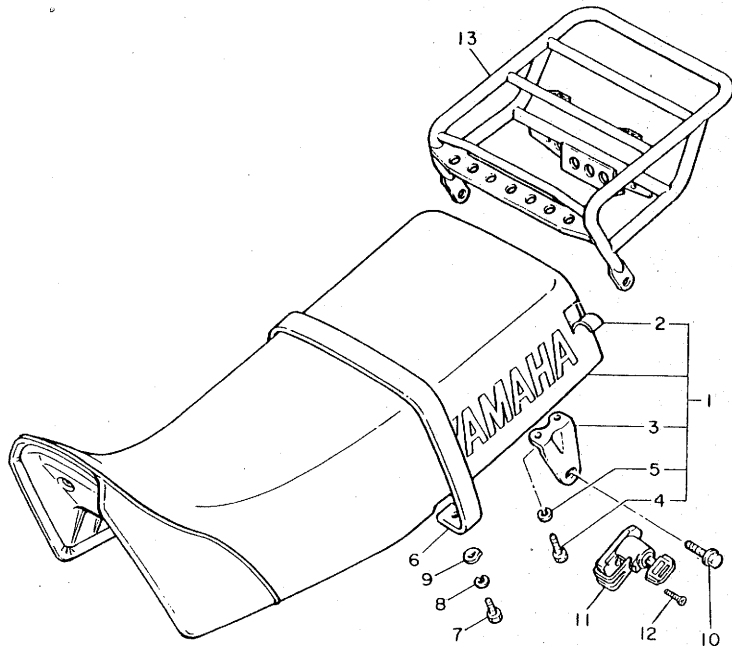


43F300-6240

REF. NO.	PART NO.	DESCRIPTION	Q'TY	REMARKS
1	43F-24110-00-05	FUEL TANK CMP.	1	UR white
	43F-24110-00-06	FUEL TANK CMP.	1	UR yamaha black
2	43F-24240-20	•GRAPHIC SET	1	UR for white
	43F-24240-30	•GRAPHIC SET	1	UR for yamaha black
3	43F-24500-00	FUEL COCK ASSY 1	1	
4	4X8-24534-00	•SEAL, cock	1	
5	4X8-24565-00	•GASKET	1	
6	4X8-24512-00	•GASKET	1	
7	4X8-24535-00	•SCREW, lever fitting	2	
8	90149-06011	SCREW	2	
9	90202-06010	WASHER, Plate	2	
10	90445-103A3	HOSE	1	
11	90467-09006	CLIP	2	
12	34L-24610-02	CAP ASSY	1	
13	4L0-24181-00	DAMPER, locating 1	2	
14	43F-24182-00	DAMPER, locating 2	1	
15	90209-07256	WASHER	1	
16	97301-06010	BOLT	1	
17	43F-2137W-10	SCOOP, air 1	1	chappy red
18	43F-2137U-00	GUIDE, air 1	1	yamakablack
19	43F-2137X-10	SCOOP, air 2	1	chappy red
20	43F-2137V-00	GUIDE, air 2	1	yamaha black
21	90149-06197	SCREW	2	
22	90149-06200	SCREW	2	
23	90201-06380	WASHER, Plate	4	
24	90480-08216	GROMMET	2	

D10

FIG. 25 SEAT



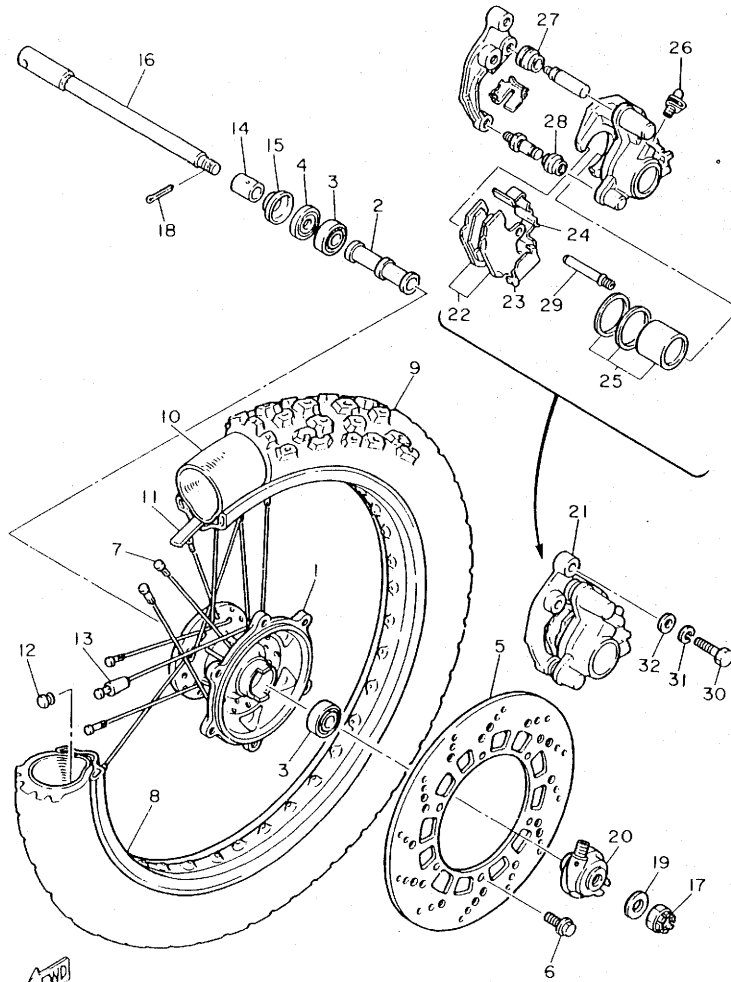
REF. NO.	PART NO.	DESCRIPTION	Q'TY	REMARKS
1	43F-24770-10	SEMI-DOUBLE SEAT ASSY	1	UR red for w
	43F-24770-30	SEMI-DOUBLE SEAT ASSY	1	UR black for yb
2	43F-24731-00	•COVER, seat	1	UR red for w
	43F-24731-20	•COVER, seat	1	UR black for yb
3	43F-24738-00	•BRACKET, seat	2	
4	97301-06016	•BOLT	4	
5	92990-06100	•WASHER, spring	4	
6	43F-24734-00	BAND, seat	1	UR red for w
	43F-24734-10	BAND, seat	1	UR black for yb
7	97301-06016	BOLT	2	
8	92990-06100	WASHER, spring	2	
9	90206-06765	WASHER, wave	2	
10	95802-06010	BOLT, flange	2	
11	55E-21308-00	HELMET HANGER ASSY	1	
12	92701-06015	SCREW, flat head	1	
13	43F-24830-00-98	SUB CARRIER ASSY	1	low gloss black



43F300-4250

D11

FIG. 26 FRONT WHEEL

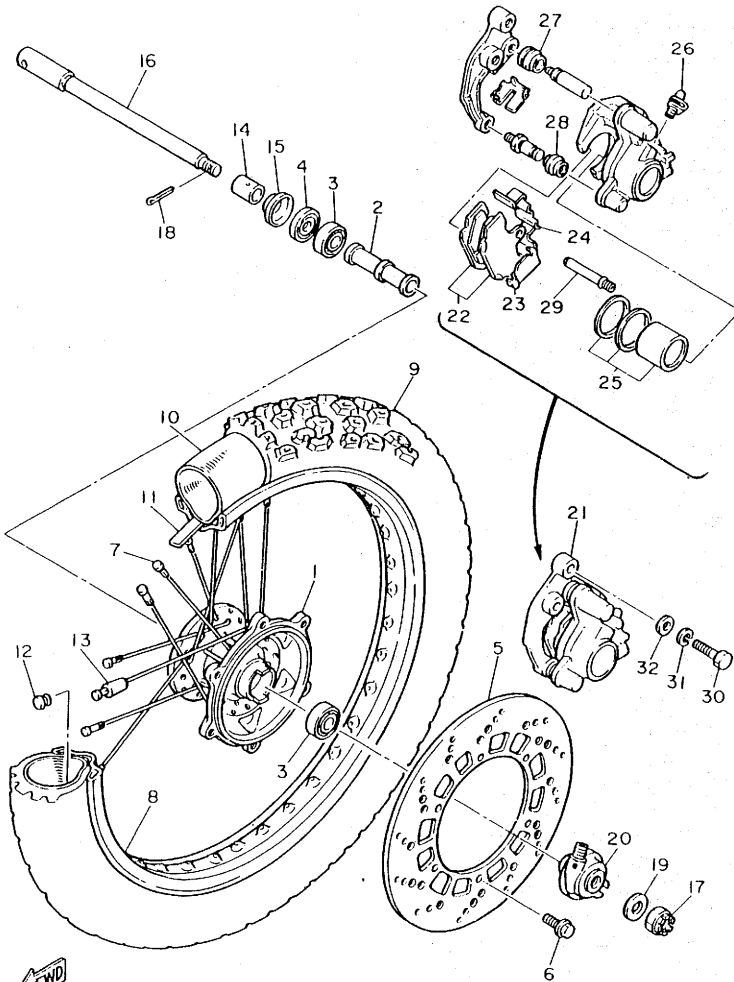


43F300-4260

REF. NO.	PART NO.	DESCRIPTION	Q'TY	REMARKS
1	34L-25111-00-98	HUB, front	1	low gloss black
2	90560-15240	SPACER	1	
3	93306-20209	BEARING (B6202)	2	
4	93102-20281	OIL SEAL	1	
5	43F-25831-00	DISC, brake (RIGHT)	1	
6	90109-06757	BOLT	6	
7	34L-25104-00	SPOKE SET, front	1	
8	94416-21396	RIM (1.60-21)	1	Gold/takasago
9	94130-211N0	TIRE (3.00-21)	1	bridgestone
10	94227-21123	TUBE (2.75-21)	1	bridgestone
11	94330-21084	BAND, rim (3.00-21)	1	bridgestone
12	90480-10068	GROMMET	1	
13	156-25398-00	BALANCER, wheel	1	UN
14	90387-152J3	COLLAR	1	
15	322-25118-00	COVER, hub dust	1	
16	43F-25181-00	AXLE, wheel	1	
17	90171-14020	NUT, castle	1	
18	91401-30030	PIN, cotter	1	
19	90201-15785	WASHER, Plate	1	
20	34L-25190-00	GEAR UNIT ASSY	1	
21	43F-25810-20	CALIPER ASSY	1	titanic Gray metallic
22	43F-W0045-00	•BRAKE PAD KIT, front	1	
23	11U-25827-10	•SHIM, caliPer	1	
24	34L-25919-00	•SUPPORT, Pad	1	
25	4X8-W0057-00	•PISTON ASSY, caliPer	1	
26	51L-W0048-00	•BREED SCREW KIT	1	
27	4X8-25917-00	•BOOT, caliPer	1	
28	5R2-25937-00	•BOOT 2	1	

D12

FIG. 26 FRONT WHEEL



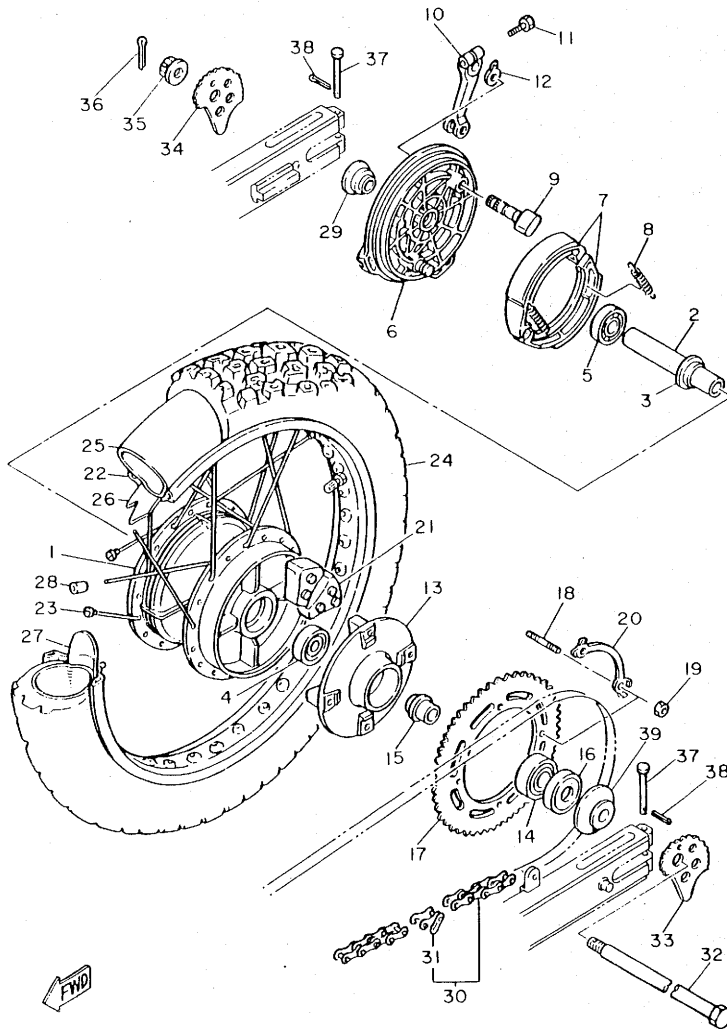
REF. NO.	PART NO.	DESCRIPTION	Q'TY	REMARKS
29	34L-25924-00	•PIN, Pad	1	
30	90101-10308	BOLT	2	
31	92901-10100	WASHER, sPring	2	
32	92901-10200	WASHER, Plain	2	



43F300-4260

D13

FIG. 27 REAR WHEEL

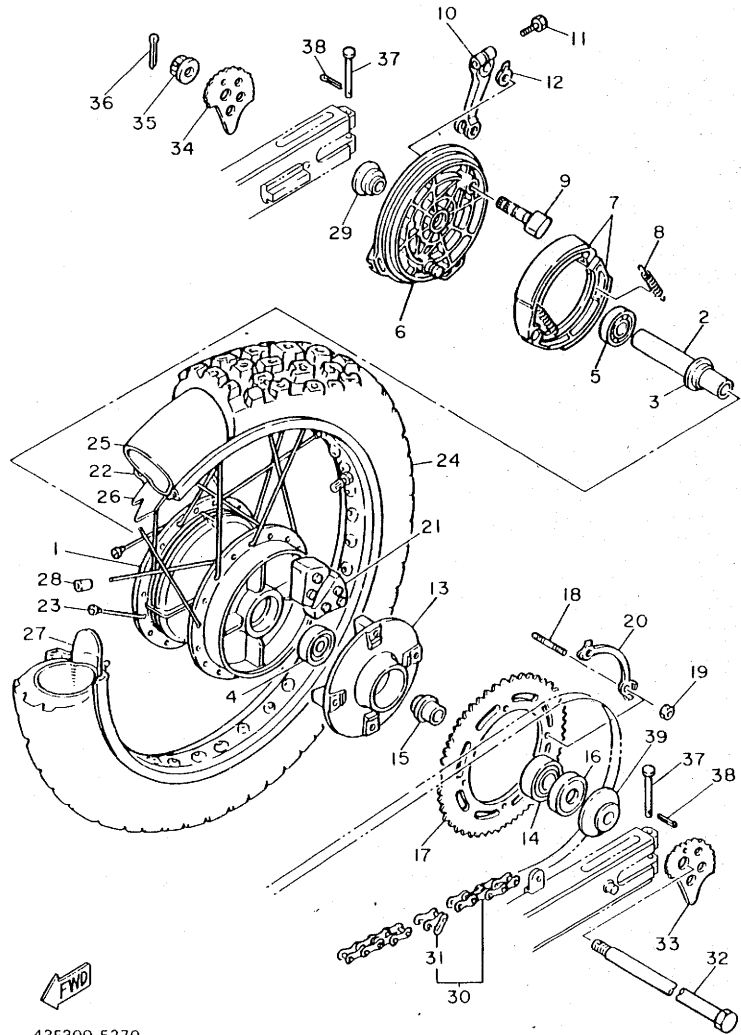


43F300-5270

REF. NO.	PART NO.	DESCRIPTION	Q'TY	REMARKS
1	5Y1-25311-00-98	HUB, rear	1	low gloss black
2	5X4-25317-00	SPACER, bearing	1	
3	146-25315-00	FLANGE, spacer	1	
4	93306-20316	BEARING (B6203)	1	
5	93306-20310	BEARING (B6203DU)	1	
6	34L-25321-00-98	PLATE, brake shoe	1	low gloss black
7	5Y1-25330-00	BRAKE SHOE COMP.	2	
8	90507-20002	SPRING, tension	2	
9	5Y1-25151-00	CAMSHAFT	1	
10	34L-25355-00	LEVER, camshaft	1	
11	90101-06291	BOLT	1	
12	4G0-2533A-00	PLATE, indicator	1	
13	5Y1-25366-00-98	CLUTCH, hub	1	low gloss black
14	93306-30423	BEARING	1	
15	5Y1-25377-00	COLLAR, wheel	1	
16	93102-30072	OIL SEAL	1	
17	43F-25440-50-33	SPROCKET, driven (40T)	1	yamaha black
18	90116-10348	BOLT, stud	4	
19	90170-10219	NUT	4	
20	5Y1-25412-00	WASHER	2	
21	5Y1-25364-00	DAMPER	4	
22	94425-18421	RIM (2.50-18)	1	gold/takasa
23	34L-25304-00	SPOKE SET, rear	1	
24	94146-181N2	TIRE (4.60-18)	1	bridgestone
25	94212-18188	TUBE (120/90-18)	1	dunlop
26	94340-18086	BAND, rim (4.00-18)	1	bridgestone
27	2X5-25394-00	SPACER, bead	1	
28	156-25398-00	BALANCER, wheel	1	UN

D14

FIG. 27 REAR WHEEL

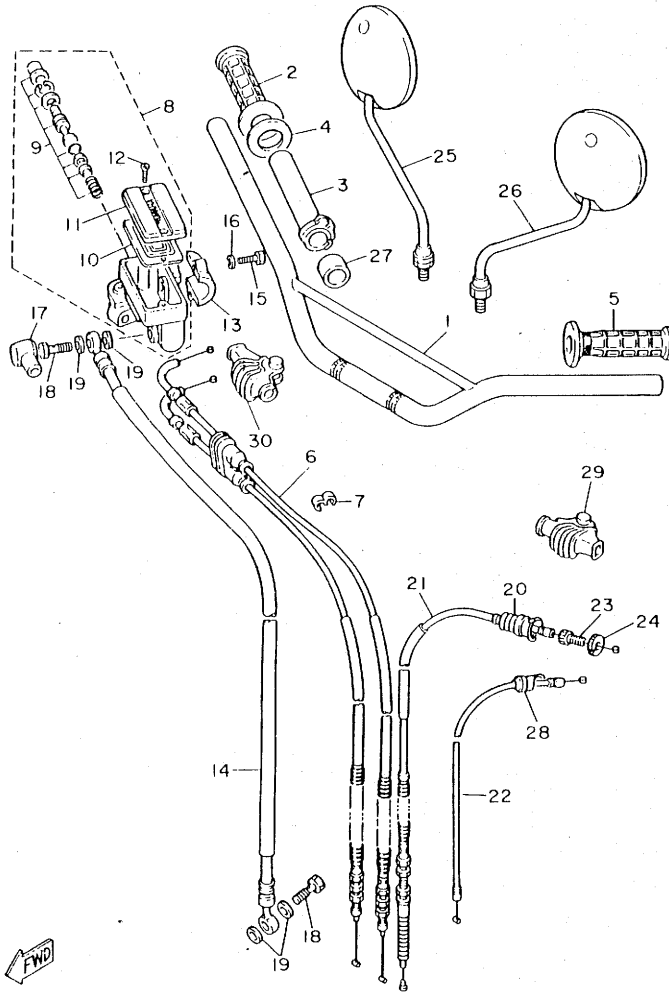


REF. NO.	PART NO.	DESCRIPTION	Q'TY	REMARKS
29	90387-175K6	COLLAR	1	
30	94580-40102	CHAIN (D.I.D 520V/S-102L)	1	
31	94680-50011	•JOINT, chain (D.I.D.50HDS)	1	
32	43F-25381-00	AXLE, wheel	1	
33	3Y1-25389-00	PULLER, chain 2	1	
34	3Y1-25388-01	PULLER, chain 1	1	
35	90171-16024	NUT, castle	1	
36	91401-30030	PIN, cotter	1	
37	91701-05055	PIN, clevis	2	
38	91401-16012	PIN, cotter	2	
39	43F-25383-00	COLLAR, wheel	1	

43F300-5270

D15

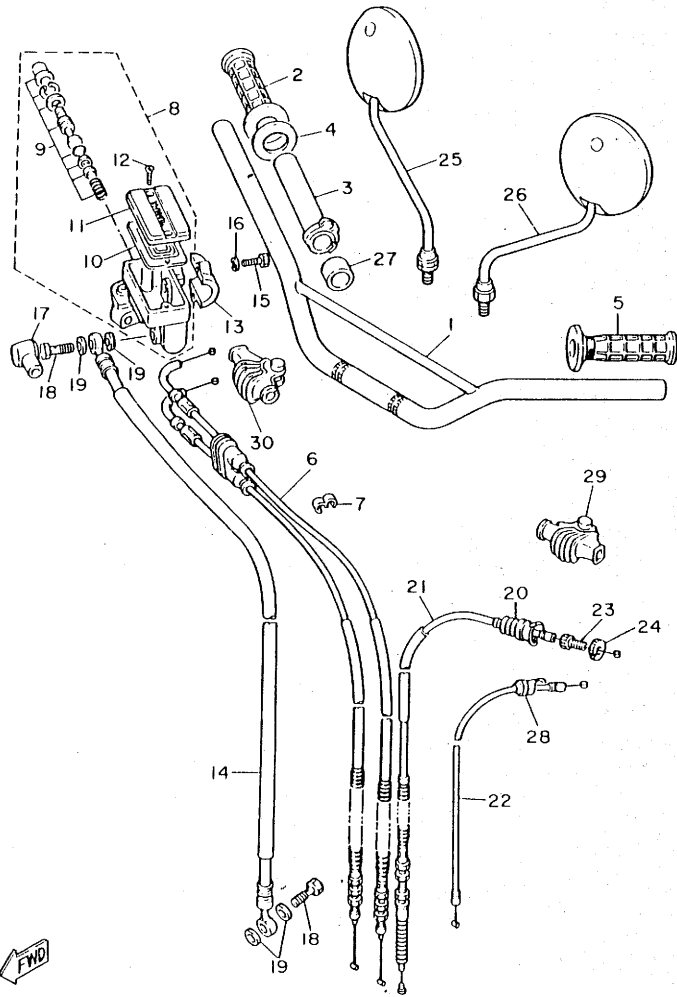
FIG. 28 STEERING HANDLE. CABLE



49L700-6280

REF. NO.	PART NO.	DESCRIPTION	Q'TY	REMARKS
1	34K-26111-00	HANDLEBAR	1	
2	33G-26242-00	GRIP (R.H)	1	
3	3Y1-26243-01	TUBE, throttle guide	1	
4	3Y1-26249-00	RING, leaf	1	
5	33G-26241-00	GRIP (L.H)	1	
6	43F-26302-01	THROTTLE CABLE ASSY	1	
7	90468-15009	CLIP	1	
8	4L0-25850-02	MASTER CYLINDER ASSY	1	
9	4L0-W0041-00	.CYLINDER KIT, master	1	
10	4L0-25854-00	.DIAPHRAGM, reservoir	1	
11	4L0-25852-00	.CAP, reservoir	1	
12	98706-04012	.SCREW, flat head	2	
13	4L0-25867-00	BRACKET, master cylinder	1	
14	43F-25872-01	HOSE, brake 1	1	
15	97326-06025	BOLT	2	
16	92906-06100	WASHER, spring	2	
17	4L0-25862-00	BOOT, master cylinder	1	
18	90401-10034	BOLT, union	2	
19	90201-10118	WASHER, plate	4	
20	1E6-26342-00	BOOT, cable	1	
21	34L-26335-01	CABLE, clutch	1	
22	34L-26331-00	CABLE, starter 1	1	
23	90123-08046	BOLT	1	
24	90179-08148	NUT	1	
25	1Y1-26290-40	BACK MIRROR ASSY (R.H)	1	UR
	30X-26290-00	BACK MIRROR ASSY (R.H)	1	UR for s.africa
26	5Y4-26290-30	BACK MIRROR ASSY (L.H)	1	UR
	30X-26290-10	BACK MIRROR ASSY (L.H)	1	UR for s.africa

FIG. 28 STEERING HANDLE. CABLE

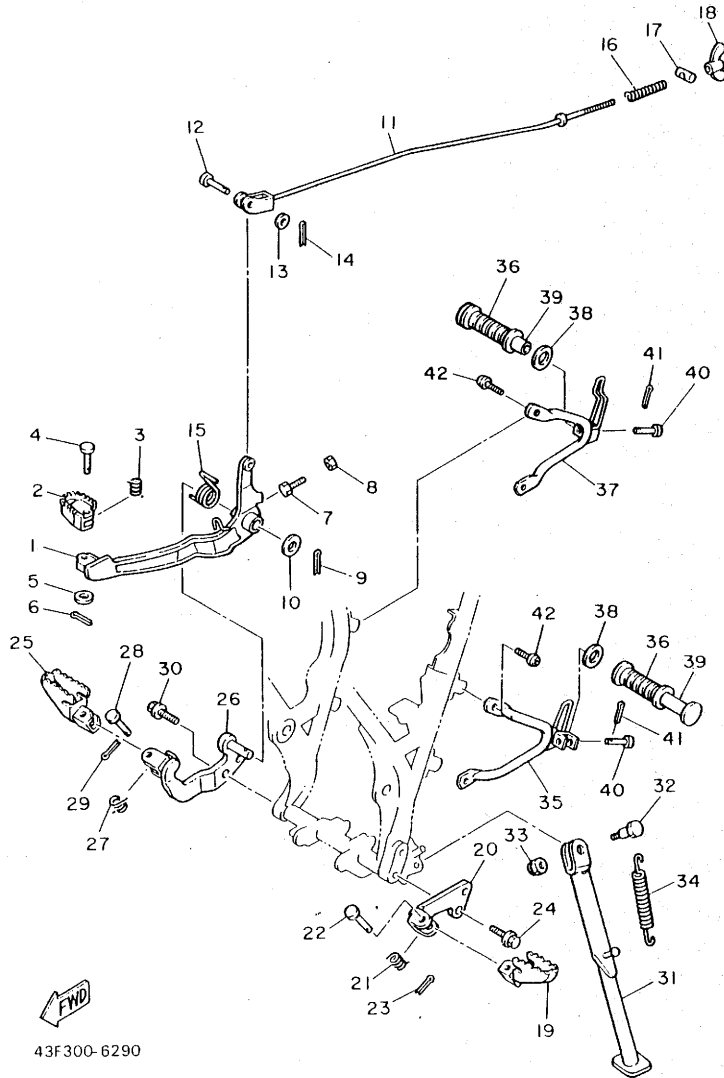


49L700-6280

REF. NO.	PART NO.	DESCRIPTION	Q'TY	REMARKS
27	90387-227H7	COLLAR	1	
28	5Y1-26339-00	BOOT	1	
29	1E6-26372-00	COVER, handle lever 1	1	
30	1T5-26372-00	COVER, handle lever 1	1	

E3

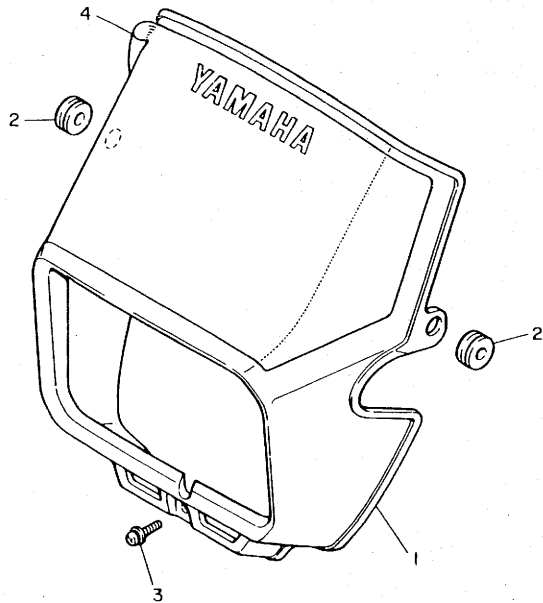
FIG. 29 STAND, FOOTREST



REF. NO.	PART NO.	DESCRIPTION	Q'TY	REMARKS
29	91401-25015	PIN, cotter	1	
30	95821-10025	BOLT, flange	2	
31	55W-27311-00-R4	STAND, side	1	black
32	90109-124A7	BOLT	1	
33	90185-12119	NUT, self-locking	1	
34	90507-29009	SPRING, tension	1	
35	26F-27432-00-FH	BRACKET 1	1	fire red
36	120-27433-00	COVER, rear footrest	2	
37	50T-27442-00-FH	BRACKET 2	1	fire red
38	90201-20279	WASHER, Plate	2	
39	120-27431-00	FOOTREST, rear 1	2	
40	90240-06009	PIN, clevis	2	
41	91401-16015	PIN, cotter	2	
42	90109-08789	BOLT	4	

E5

FIG. 30 COWLING 1



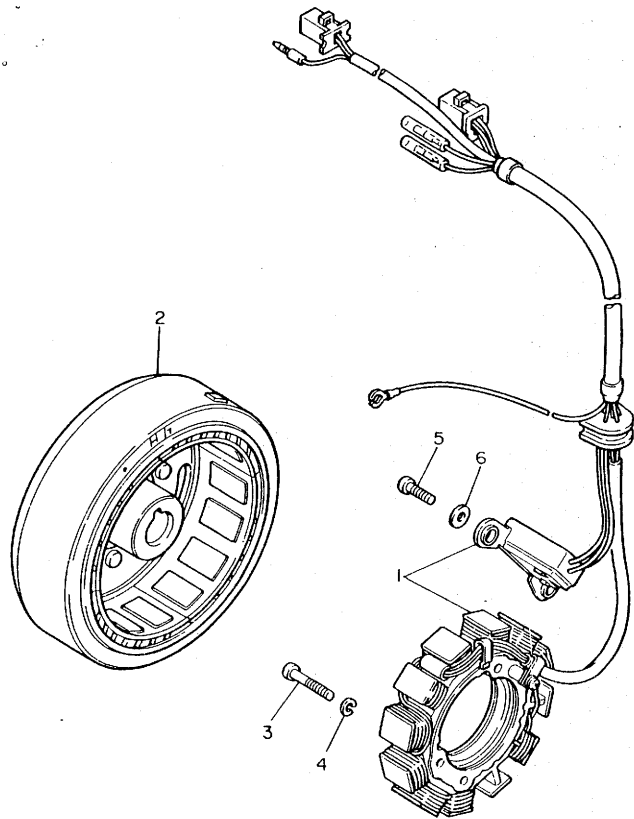
REF. NO.	PART NO.	DESCRIPTION	Q'TY	REMARKS
1	43F-28351-00	BODY, cowling	1	UR clean white
	34Y-28351-10	BODY, cowling	1	UR yamaha black
2	90480-12053	GROMMET	2	
3	90159-06060	SCREW, with washer	1	
4	57U-28368-00	EMBLEM	1	UR chappy red
	43F-28368-20	EMBLEM	1	UR yamaha black



43F300-6300

E6

FIG. 31 GENERATOR



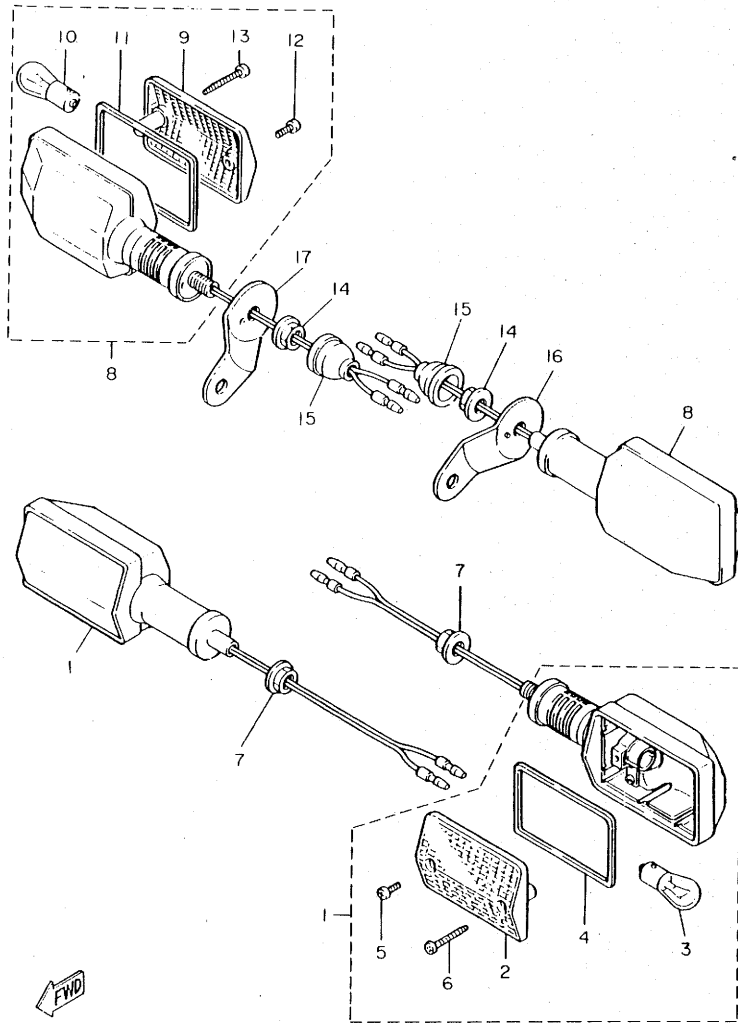
REF. NO.	PART NO.	DESCRIPTION	Q'TY	REMARKS
1	34L-81410-51	STATOR ASSY	1	
2	34L-81450-50	ROTOR ASSY	1	
3	92502-06035	SCREW, Pan head	4	
4	92990-06100	WASHER, sPrin&	4	
5	92501-06020	SCREW, Pan head	2	
6	90201-06674	WASHER, Plate	2	



43F300-4310

E7

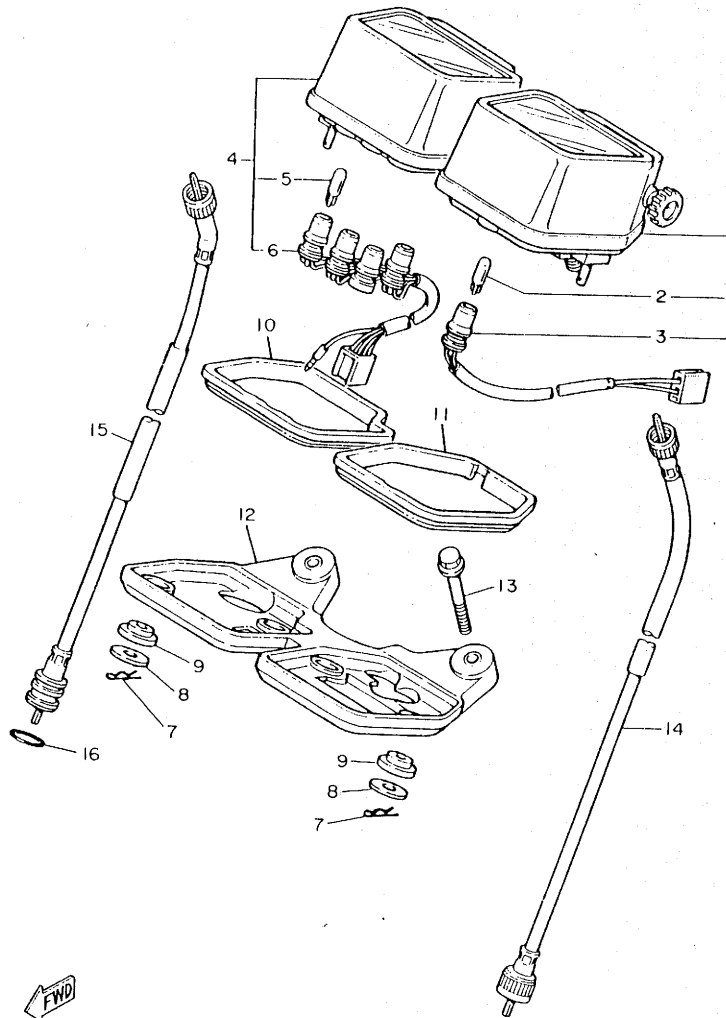
FIG. 32 FLASHER LIGHT



REF. NO.	PART NO.	DESCRIPTION	Q'TY	REMARKS
1	5Y1-83330-70	FRONT FLASHER LIGHT ASSY 1	2	
2	5Y1-83312-00	•LENS, flasher	1	
3	256-83311-70	•BULB (12V-27W)	1	
4	5Y1-83313-00	•GASKET, flasher lens	1	
5	98503-04010	•SCREW, Pan head	1	
6	97701-40530	•SCREW, tapping	1	
7	95702-12100	NUT, flange	2	
8	5Y1-83330-70	REAR FLASHER LIGHT ASSY 1	2	
9	5Y1-83312-00	•LENS, flasher	1	
10	256-83311-70	•BULB (12V-27W)	1	
11	5Y1-83313-00	•GASKET, flasher lens	1	
12	98503-04010	•SCREW, Pan head	1	
13	97701-40530	•SCREW, tapping	1	
14	95702-12100	NUT, flange	2	
15	10V-83365-00	CAP	2	
16	15A-83368-00	STAY, flasher	1	
17	15A-83369-00	STAY, flasher	1	

49L700-4320

FIG. 33 METER



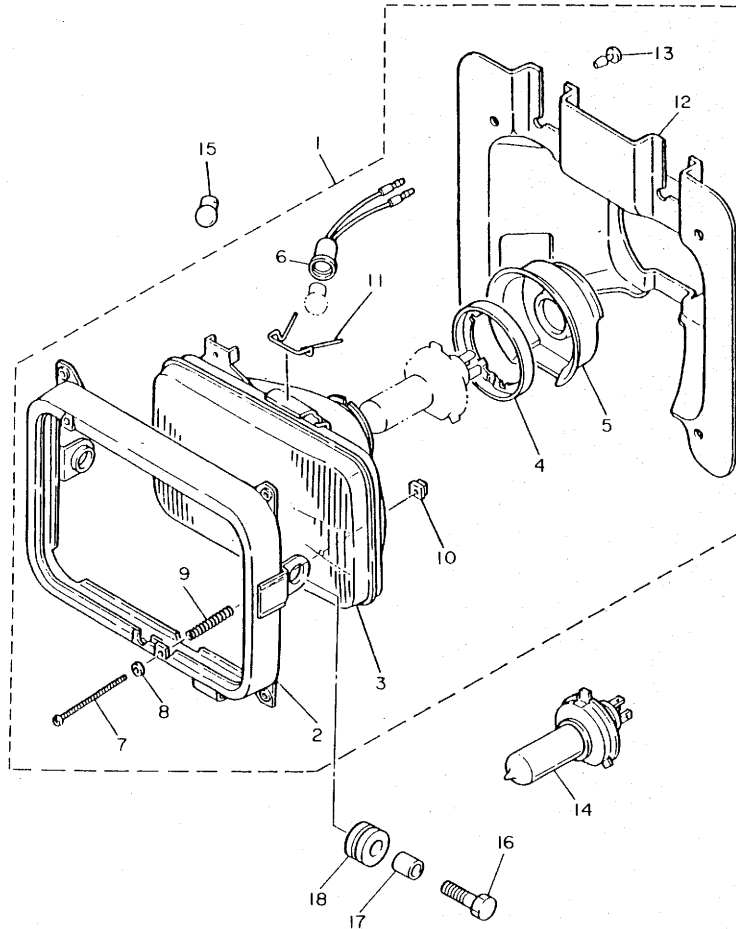
REF. NO.	PART NO.	DESCRIPTION	Q'TY	REMARKS
1	34L-83570-F0	SPEEDOMETER ASSY	1	
2	4G1-84744-00	•BULB (12V-3.4W)	1	
3	5Y1-83536-00	•SOCKET, meter	1	
4	34L-83540-00	TACHOMETER ASSY	1	
5	4G1-84744-00	•BULB (12V-3.4W)	4	
6	5Y1-83520-00	•SOCKET CORD ASSY	1	
7	437-83525-00	CLIP	4	
8	90201-05033	WASHER, Plate	4	
9	1M1-83526-00	DAMPER 2	4	
10	5Y1-83541-00	DAMPER	1	
11	5Y1-83513-00	DAMPER	1	
12	5Y1-83519-00	BRACKET, meter	1	
13	95806-06040	BOLT, flange	2	
14	34L-83550-01	SPEEDOMETER CABLE ASSY	1	
15	34L-83560-00	TACHOMETER CABLE ASSY	1	
16	93210-14104	O-RING	1	



43F300-4330

E9

FIG. 34 HEADLIGHT



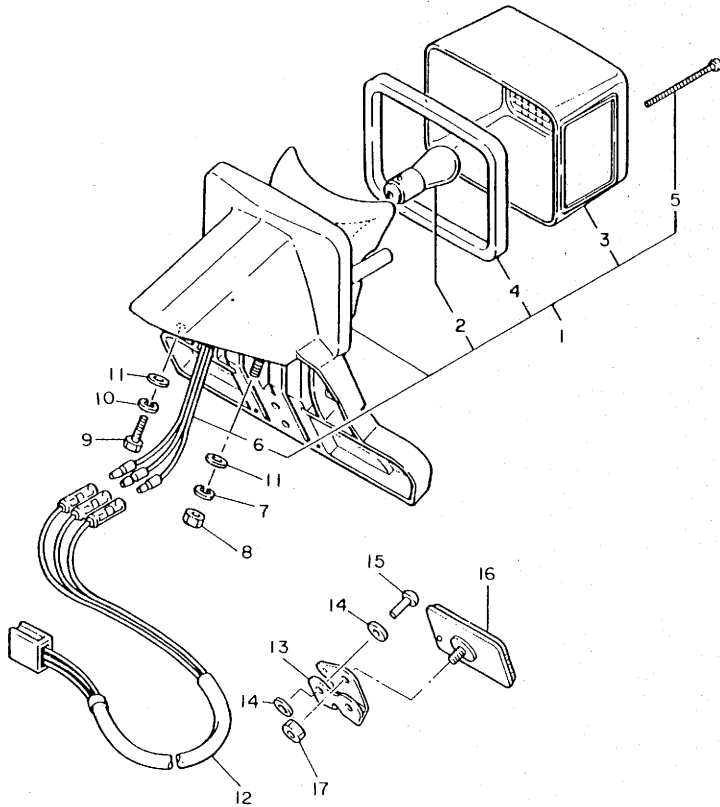
REF. NO.	PART NO.	DESCRIPTION	Q'TY	REMARKS
1	43F-84303-H0	HEADLIGHT UNIT ASSY	1	
2	47J-84115-00	•RIM, headlight	1	
3	5G8-84321-H0	•LENS, headlight	1	
4	2F9-84375-00	•FITTING PLATE, bulb	1	
5	2F9-84397-01	•COVER, socket	1	
6	457-84146-85	•SOCKET, Pilot light	1	
7	43F-84131-00	•SCREW, rim adjuster	2	
8	233-84127-60	•WASHER, special	2	
9	5G2-84332-60	•SPRING, screw	2	
10	198-84334-60	•NUT, adjusting	2	
11	5G2-84324-A0	•SPRING, reflector	1	
12	10V-84196-00	•COVER, socket	1	
13	10V-84198-00	•CLIP, cover fitting	2	
14	*	BULB (12V-60/55W)	1	LM
15	*	BULB (12V-3.4W)	1	LM
16	97302-06020	BOLT	2	
17	90387-06388	COLLAR	2	
18	90480-14023	GROMMET	2	



491 700-6340

E10

FIG. 35 TAILLIGHT



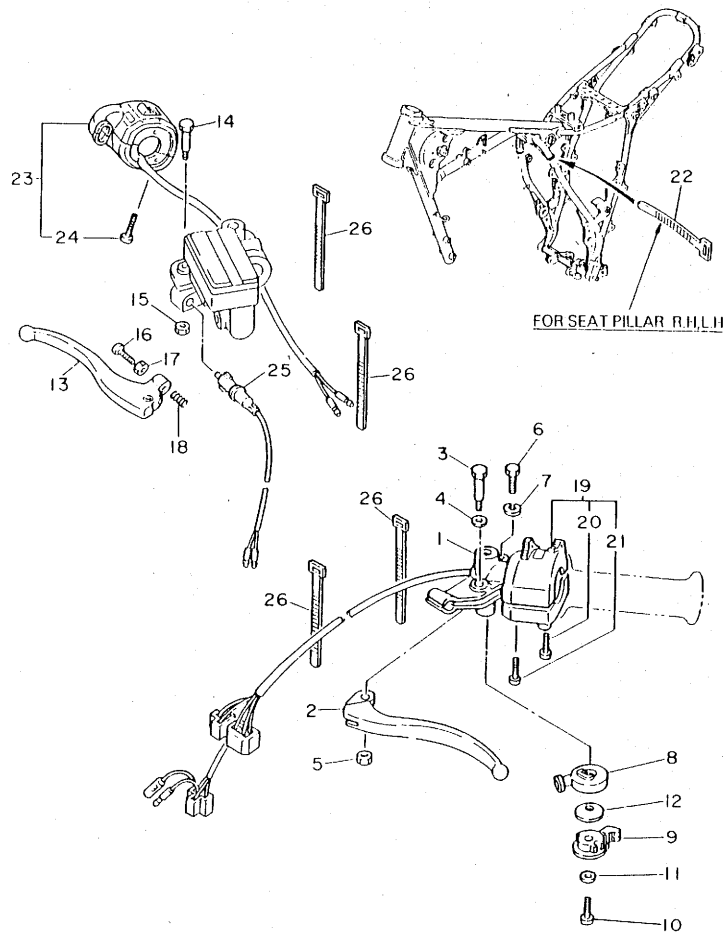
REF. NO.	PART NO.	DESCRIPTION	Q'TY	REMARKS
1	5Y7-84700-00	TAILLIGHT ASSY	1	
2	256-84714-61	•BULB (12V-27/8W)	1	
3	1M1-84521-60	•LENS, taillight	1	
4	15A-84545-00	•GASKET, lens	1	
5	3Y1-84524-00	•SCREW, lens fitting	2	
6	15A-84536-00	•SOCKET CORD ASSY	1	
7	92990-06100	WASHER, sPring	2	
8	95302-06600	NUT	2	
9	97302-06025	BOLT	1	
10	92990-06100	WASHER, sPring	1	
11	90201-062G3	WASHER, Plate	3	
12	5Y1-84717-00	CORD, taillight	1	
13	33G-85132-00	BRACKET, reflector	1	
14	90201-044A2	WASHER, Plate	4	
15	90267-40076	RIVET, blind	2	
16	3G1-85130-01	REAR REFLECTOR ASSY	1	
17	95302-05600	NUT	1	



49L700-4350

E11

FIG. 36 HANDLE SWITCH. LEVER



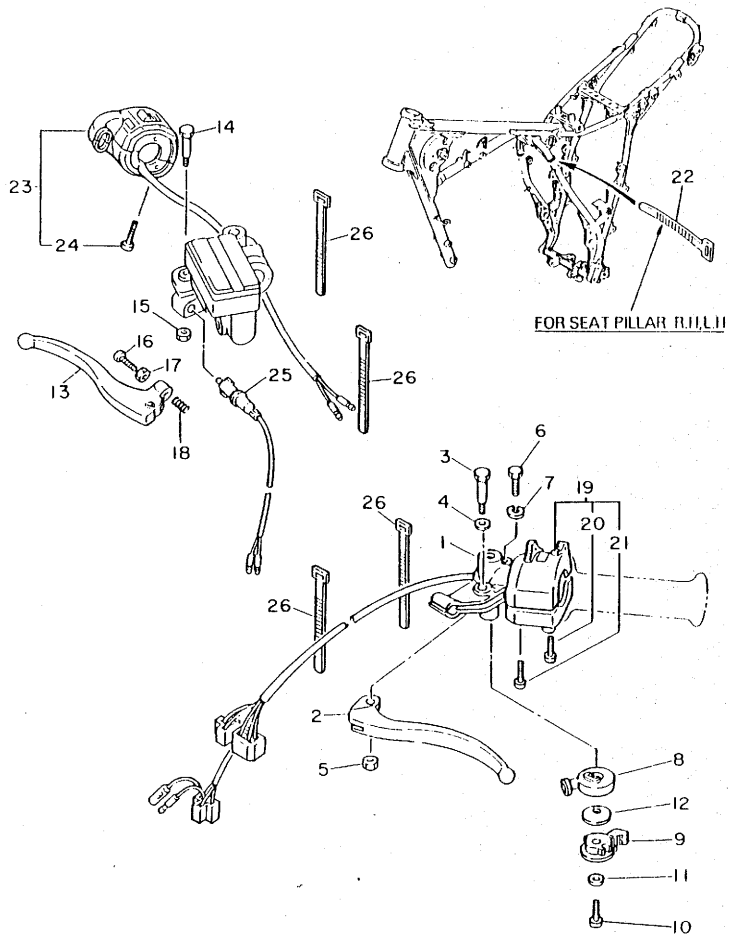
REF. NO.	PART NO.	DESCRIPTION	Q'TY	REMARKS
1	5Y1-82911-01	HOLDER, lever 1	1	
2	5Y1-83912-00	LEVER 1	1	
3	90109-06796	BOLT	1	
4	90201-08083	WASHER, Plate	1	
5	95601-06100	NUT, u	1	
6	97306-06022	BOLT	1	
7	92906-06100	WASHER, sPring	1	
8	5Y1-83942-00	COVER, starter	1	
9	5Y1-83941-00	LEVER, starter	1	
10	90153-06042	SCREW, hexa&on	1	
11	92906-06200	WASHER, Plain	1	
12	90209-10131	WASHER	1	
13	43F-83922-00	LEVER 2	1	
14	90109-06577	BOLT	1	
15	95606-06100	NUT, u	1	
16	90149-06153	SCREW	1	
17	90170-06010	NUT	1	
18	90501-10312	SPRING, compression	1	
19	30X-83972-00	SWITCH, handle 4	1	
20	98506-05030	•SCREW, Pan head	1	
21	98506-05035	•SCREW, Pan head	1	
22	7F6-82591-00	BAND	2	
23	43F-83976-00	SWITCH, handle 1	1	
24	98506-05020	•SCREW, Pan head	2	
25	34X-83980-01	FRONT STOP SWITCH ASSY	1	

FWD

43F300-5360

E12

FIG. 36 HANDLE SWITCH. LEVER



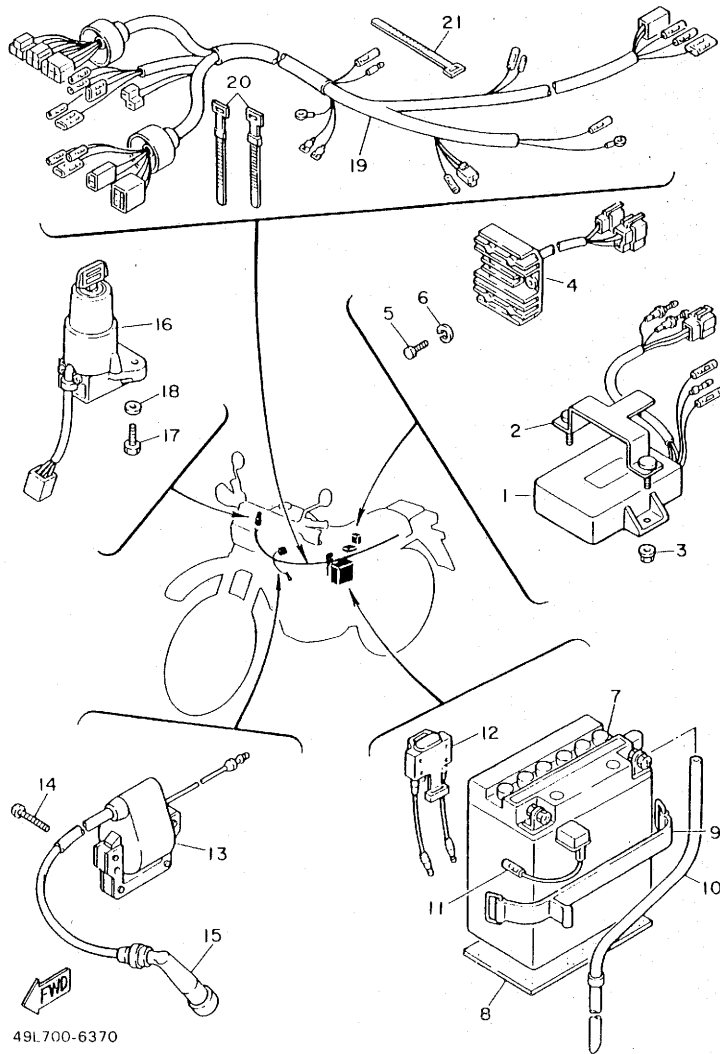
REF. NO.	PART NO.	DESCRIPTION	Q'TY	REMARKS
26	437-83936-00	BAND, switch cord	4	



43F300-5360

E13

FIG. 37 ELECTRICAL 1

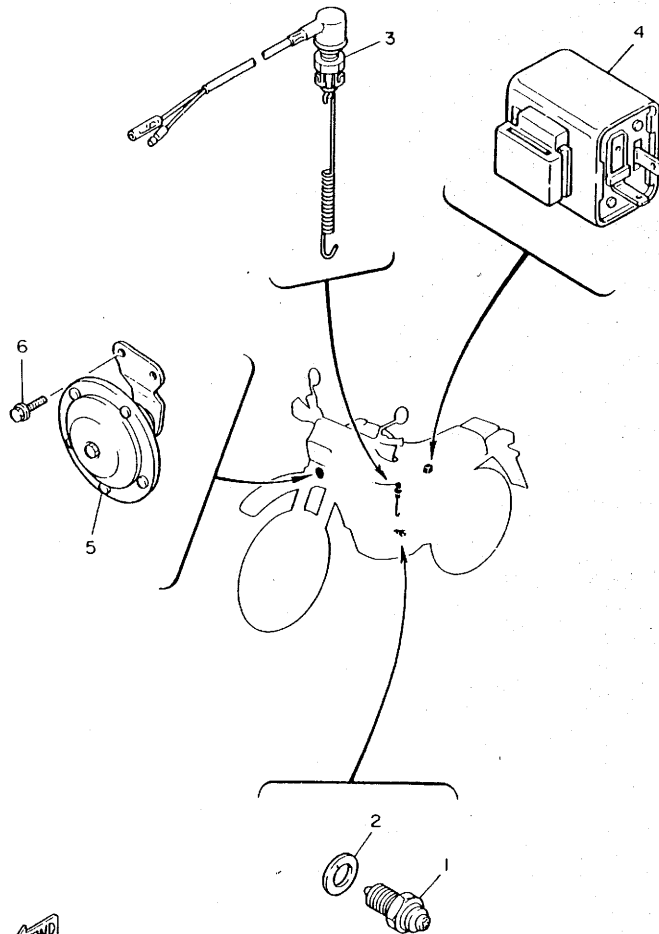


49L700-6370

REF. NO.	PART NO.	DESCRIPTION	Q'TY	REMARKS
1	34L-85540-51	C.D.I. UNIT ASSY	1	
2	34L-8553A-00	STAY UNIT	1	
3	95701-06500	NUT, flange	2	
4	34L-81960-A0	RECTIFIER & REGULATOR ASSY	1	
5	97002-06016	BOLT	2	
6	92990-06100	WASHER, spring	2	
7	43F-82110-60	BATTERY ASSY (GM4A-3B)	1	
8	5Y1-82122-00	SEAT, battery	1	
9	4J2-82131-01	BAND, battery	1	
10	90445-08782	HOSE	1	
11	1M1-82115-00	WIRE, Plus lead	1	
12	5Y1-82180-00	CIRCUIT BREAKER ASSY	1	
13	43F-82310-50	IGNITION COIL ASSY	1	
14	92501-06020	SCREW, Pan head	2	
15	371-82370-00	PLUG CAP ASSY	1	
16	5Y3-82501-80	MAIN SWITCH STEERING LOCK	1	
17	97301-06016	BOLT	2	
18	92990-06600	WASHER, Plate	2	
19	43F-82590-00	WIRE HARNESS ASSY	1	
20	437-83936-00	BAND, switch cord	2	
21	437-83936-10	BAND, switch cord	1	

E14

FIG. 38 ELECTRICAL 2



REF. NO.	PART NO.	DESCRIPTION	Q'TY	REMARKS
1	2H7-82540-00	NEUTRAL SWITCH ASSY	1	
2	90430-10027	GASKET	1	
3	34L-82530-00	STOP SWITCH ASSY	1	
4	30X-83350-20	FLASHER RELAY ASSY	1	
5	12R-83371-20	HORN	1	
6	95801-06010	BOLT, flange	2	



43F300-4380

E15

NUMERICAL INDEX

PART NO.	GRID NO.	PART NO.	GRID NO.	PART NO.	GRID NO.	PART NO.	GRID NO.	PART NO.	GRID NO.	PART NO.	GRID NO.
4L0-W0041-00	E- 2	34K-12161-00	B- 7	5Y1-14325-00	B-13	34K-1490K-00	B-14	55U-17241-00	C- 9	43F-2174A-10	D- 2
43F-W0045-00	D-12	34K-12162-00	B- 7	43F-14341-00	B-13	34L-14905-00	B-14	5Y1-17251-00	C- 9	34L-21750-02	C-15
51L-W0048-00	D-12	34K-12163-00	B- 7	43F-14342-23	B-13	34L-15100-04	C- 2	34K-17402-00	C- 9	34L-21756-01	C-15
4X8-W0057-00	D-12	5Y1-12166-00	B- 7	288-14343-65	B-13	5Y1-15383-00	C- 2	34L-17411-00	C- 9	34F-2176E-01	C-12
34K-W1141-00	B- 5	43F-12170-00	B- 8	43F-14343-58	B-14	34K-15411-00	C- 3	3Y1-17456-00	C- 9	34L-21761-01	C-15
5Y1-W1343-00	B- 9	34K-12176-00	B- 8	5Y1-14349-00	B-13	5Y1-15417-01	C- 3	5Y1-17461-50	C- 9	34L-2177G-00	C-15
43F-W2313-00	D- 8	34K-12210-00	B- 8	5Y1-14355-00	B-14	5Y1-15421-01	C- 3	5Y1-17471-00	C- 9	43F-21773-00	C-15
43F-W2314-00	D- 8	4X7-12213-00	B- 8	5Y1-14356-00	B-14	5Y1-15427-01	B- 9	5Y1-17800-00	B- 2	43F-21781-20	C-15
34L-11101-01	B- 2	34K-12231-00	B- 8	5Y1-14357-00	B-13	5Y1-15431-01	C- 3	5Y1-18101-01	C-11	43F-21781-30	C-15
583-11127-00	B- 2	34K-12241-00	B- 8	5Y1-14358-00	B-14	5Y1-15441-00	C- 3	43F-18102-01	C-11	43F-21782-00	C-15
	B- 4	5Y1-12283-00	B- 8	5Y1-14377-00	B-14	5Y1-15451-01	C- 3	34L-18110-00	C-11	43F-21783-00	C-15
4H7-11133-10	B- 2	34K-12288-00	B- 2	5Y1-14384-00	B-13	34K-15462-00	C- 3	1W6-18113-00	C-11	43F-21783-00	D- 3
34K-11145-00	B- 6	34L-12292-00	B- 3	5Y1-14385-00	B-13	3Y1-1561A-02	C- 5	34K-18120-00	C-11	34L-22117-00	D- 4
34L-11166-00	C- 2	583-13113-00	B- 9	6E5-14386-01	B-13	5Y1-1561G-00	C- 6	34K-18140-00	C-10	34L-22123-00	D- 3
34K-11181-00	B- 4	5Y1-13300-00	B- 9	5Y1-14396-00	B-13	5Y1-1562F-01	C- 4	5Y1-18185-00	C-10	34L-22124-00	D- 3
1H2-11186-00	B- 2	5Y1-13325-00	B- 9	5Y1-14397-00	B-13	5Y1-15620-02	C- 5	5Y1-18511-00	C-10	2K6-22128-01	D- 3
5Y1-11187-00	B- 2	5Y1-13371-00	B-10	5Y1-14398-00	B-14	5Y1-15621-01	C- 5	5Y1-18512-00	C-10	34L-22128-00	D- 3
214-11198-01	B- 9	5Y1-13415-01	B- 9	43F-14401-00	B-11	34K-15641-00	C- 5	5Y1-18513-00	C-10	23X-22129-00	D- 4
34L-11310-00	B- 4	4X7-13440-90	B- 9	43F-14412-00	B-11	117-15644-00	C- 9	34K-18531-00	C-10	34L-22129-00	D- 5
34K-11351-00	B- 4	583-13447-01	B- 9	34L-1442F-00	B-11	5Y1-15645-00	C- 3	34K-18535-00	C-10	34K-22141-01	D- 4
34K-11400-00	B- 5	11H-13455-00	B- 9	34L-14425-00	B-11	5Y1-15651-01	C- 5	5Y1-18540-00	C-10	34L-22147-00	D- 3
34K-11422-00	B- 5	34L-13464-02	B- 9	34L-14426-00	B-11	5Y1-15660-01	C- 5	43F-21110-01-FH	C-12	5X6-22151-10	D- 3
34K-11454-00	B- 5	43F-13465-00	B-10	34L-14437-00	B-11	2K7-15668-00	C- 5	34L-21170-00	C-14	34L-22153-00	D- 3
5Y1-11496-01	B- 5	16G-13569-00	B-11	34L-14451-00	B-11	248-15668-00	C- 5	55E-21308-00	D-11	34L-2216G-00	D- 4
5Y1-11531-00	B- 5	43F-13586-01	B-11	34K-14452-00	B-11	5Y1-15671-00	C- 5	34L-21315-00	C-12	34L-2217A-00	D- 3
34K-11536-01	B- 5	43F-13596-00	B-11	43F-14453-00	B-11	214-15674-00	C- 5	34L-21316-00-FH	C-12	34L-2217F-00	D- 3
34K-11565-02	B- 5	5Y1-1410A-00	B-14	43F-14454-00	B-11	214-15686-00	C- 5	43F-2137U-00	D-10	30X-22178-00	C-12
34L-11610-00	B- 5	34K-14103-00	B-13	34L-14458-00	B-11	34K-16111-00	C- 7	43F-2137V-00	D-10	46X-2218A-00	D- 3
34L-11610-20	B- 5	43F-14105-00	B-13	34L-14461-00	B-11	34K-16150-00	C- 7	43F-2137W-10	D-10	4V4-22184-00	C-13
34L-11610-40	B- 5	5Y1-14107-00	B-13	43F-14467-00	B-11	3Y1-16154-00	C- 7	43F-2137X-10	D-10	34L-22189-00	D- 4
34L-11631-01	B- 5	5Y1-14115-00	B-13	2J2-14468-00	B-11	5Y1-16321-00	C- 7	5Y1-21441-00	C-12	50T-22210-00-6W	D- 5
34K-11633-00	B- 5	5Y1-14131-00	B-13	4H7-14484-00	C-15	360-16325-00	C- 7	34L-21471-00	C-12	50T-22211-00	D- 5
34L-11636-01	B- 5	5Y1-14137-00	B-14	5Y1-14536-00	B-13	5Y1-16331-01	C- 7	34L-21485-00	C-12	34L-22212-00-6W	D- 5
34L-11638-01	B- 5	34K-14146-00	B-14	5Y1-14556-00	B-14	5Y1-16351-00	C- 7	34L-21486-00	C-12	50T-22213-00	D- 5
34K-11651-00	B- 5	42U-14146-00	B-14	34K-14571-00	B-14	34K-16356-00	C- 7	30X-21511-00	C-14	50T-22215-00	D- 5
34K-11681-00	B- 5	5Y1-14148-00	B-14	5Y1-14572-00	B-14	5Y1-16357-00	C- 8	43F-21511-10	C-14	3R4-22221-01	D- 5
5Y1-12111-00	B- 7	5Y1-14149-00	B-14	34K-14611-00	B-15	30X-16358-00	C- 7	43F-21575-20	C-14	3Y1-22223-00	D- 5
5Y1-12113-00	B- 7	5Y1-14159-00	B-14	5Y1-14613-00	B-15	34K-16371-00	C- 7	43F-21575-30	C-14	50T-22224-00	D- 5
5Y1-12114-00	B- 7	34K-14197-00	B-13	34K-14628-00	B-15	5Y1-16381-00	C- 7	34L-21611-20	C-14	34L-22226-00	D- 5
4H7-12116-00	B- 7	5Y1-14198-00	B-13	49R-14711-00	B-15	5Y1-16383-00	C- 7	43F-21611-10	C-14	34L-22311-01	D- 4
2F3-12117-00	B- 7	5Y1-14203-00	B-13	34K-14714-00	B-15	214-16389-00	C- 7	34L-21621-00	B-11	50T-22401-00	D- 5
1J7-12118-00	B- 7	5Y1-14216-00	B-14	34L-14728-00	B-15	34K-17121-01	C- 9	34L-21685-00	C-14	50T-22409-00	D- 5
1J7-12119-01	B- 7	5Y1-14286-00	B-14	34K-14752-00	B-15	5Y1-17131-00	C- 9	43F-21711-00-1X	C-15	50T-22493-00	D- 5
34K-12121-00	B- 7	5Y1-14293-01	B-14	30X-14766-00	B-15	34K-17141-00	C- 9	43F-21711-10-1X	C-15	50T-22497-00	D- 5
5Y1-12146-00	B- 7	43F-14301-01	B-13	583-14766-00	B-15	1VJ-17151-01	C- 9	43F-21721-00-1X	C-15	43F-23110-10	D- 8
34K-12151-00	B- 7	34K-14305-00	B-13	5Y1-1490A-00	B-14	34L-17211-00	C- 9	43F-21721-10-1X	C-15	43F-23111-10	D- 8
5Y1-12156-00	B- 7	5Y1-14312-55	B-13	34K-1490J-10	B-13	5Y1-17221-01	C- 9	2J5-21732-00	C-12		D- 9
3Y1-12159-00	B- 7	43F-14320-01	B-14	43F-1490J-01	B-14	1VJ-17231-00	C- 9	43F-2174A-00	C-15	43F-23118-10	D- 8

NUMERICAL INDEX

PART NO.	GRID NO.	GRID NO.	PART NO.	GRID NO.
43F-23118-10	D-9	43M-23489-L0	D-9	
122-23119-01	D-8	43F-24110-00-05	D-10	
	D-9	43F-24110-00-06	D-10	
36Y-23125-10	D-8	4L0-24181-00	D-10	
	D-9	43F-24182-00	D-10	
43F-23126-10-38	D-8	43F-24240-20	D-10	
122-23129-00	D-8	43F-24240-30	D-10	
	D-9	677-24444-00	B-14	
43F-23136-10-38	D-8	43F-24500-00	D-10	
43F-23141-10	D-8	360-24512-00	B-13	
43F-23142-10	D-8		B-14	
43F-23144-10	D-8	4X8-24512-00	D-10	
	D-9	4X8-24534-00	D-10	
43F-23145-10	D-8	4X8-24535-00	D-10	
	D-9	4X8-24665-00	D-10	
36Y-23146-10	D-8	34L-24610-02	D-10	
	D-9	43F-24731-00	D-11	
3J2-23147-00	D-8	43F-24731-20	D-11	
	D-9	43F-24734-00	D-11	
26H-23156-00	D-8	43F-24734-10	D-11	
	D-9	43F-24738-00	D-11	
4V4-23158-L0	D-8	30X-24768-00	D-2	
	D-9	43F-24770-10	D-11	
4V2-23167-L0	D-9	43F-24770-30	D-11	
43F-23170-10	D-8	43F-24830-00-98	D-11	
4V4-23173-L0	D-8	34L-25104-00	D-12	
	D-9	34L-25111-00-98	D-12	
43F-23174-00	D-6	322-25118-00	D-12	
4V4-23181-L0	D-8	5Y1-25151-00	D-14	
	D-9	43F-25181-00	D-12	
509-23184-L0	D-8	34L-25190-00	D-12	
	D-9	34L-25304-00	D-14	
43F-23188-10	D-8	5Y1-25311-00-98	D-14	
	D-9	146-25315-00	D-14	
4V4-23190-L0	D-8	5X4-25317-00	D-14	
	D-9	34L-25321-00-98	D-14	
43F-23191-10	D-9	4G0-2533A-00	D-14	
43I-23192-L0	D-9	5Y1-25330-00	D-14	
36X-2331E-00	D-6	34L-25355-00	D-14	
34L-23318-00	D-6	5Y1-25364-00	D-14	
43F-23340-30-39	D-9	5Y1-25366-00-98	D-14	
1W1-23416-00	D-6	5Y1-25377-00	D-14	
3Y6-23434-00	D-6	43F-25381-00	D-15	
34L-23435-00-98	D-6	43F-25383-00	D-15	
1E6-23441-00	D-6	3Y1-25388-01	D-15	
3Y6-23442-00-98	D-6	3Y1-25389-00	D-15	
30X-23445-00	D-6	2X5-25394-00	D-14	
134-23484-10	D-6	156-25398-00	D-12	

PART NO.	GRID NO.	GRID NO.	PART NO.	GRID NO.
156-25398-00	D-14	57U-28368-00	E-6	
5Y1-25412-00	D-14	34L-81410-51	E-7	
43F-25440-50-33	D-14	34L-81450-50	E-7	
43F-25810-20	D-12	34L-81960-A0	E-14	
11U-25827-10	D-12	43F-82110-60	E-14	
43F-25831-00	D-12	1M1-82115-00	E-14	
4L0-25850-02	E-2	5Y1-82122-00	E-14	
4L0-25852-00	E-2	4J2-82131-01	E-14	
4L0-25854-00	E-2	5Y1-82180-00	E-14	
4L0-25862-00	E-2	43F-82310-50	E-14	
4L0-25867-00	E-2	371-82370-00	E-14	
43F-25872-01	E-2	5Y3-82501-80	E-14	
4X8-25917-00	D-12	34L-82530-00	E-15	
34L-25919-00	D-12	2H7-82540-00	E-15	
34L-25924-00	D-13	43F-82590-00	E-14	
5R2-25937-00	D-12	7F6-82591-00	E-12	
34K-26111-00	E-2	5Y1-82911-01	E-12	
33G-26241-00	E-2	256-83311-70	E-8	
33G-26242-00	E-2	5Y1-83312-00	E-8	
3Y1-26243-01	E-2	5Y1-83313-00	E-8	
3Y1-26249-00	E-2	5Y1-83330-70	E-8	
30X-26290-00	E-2	30X-83350-20	E-15	
30X-26290-10	E-2	10V-83365-00	E-8	
1Y1-26290-40	E-2	15A-83368-00	E-8	
5Y4-26290-30	E-2	15A-83369-00	E-8	
43F-26302-01	E-2	12R-83371-20	E-15	
34L-26331-00	E-2	5Y1-83513-00	E-9	
34L-26335-01	E-2	5Y1-83519-00	E-9	
5Y1-26339-00	E-2	5Y1-83520-00	E-9	
1E6-26342-00	E-2	437-83525-00	E-9	
1E6-26372-00	E-3	1M1-83526-00	E-9	
1T5-26372-00	E-3	5Y1-83536-00	E-9	
4N0-27114-00	C-12	34L-83540-00	E-9	
34L-27211-01-90	E-4	5Y1-83541-00	E-9	
43F-27231-00	E-4	34L-83550-01	E-9	
55V-27242-00	E-4	34L-83560-00	E-9	
55W-27311-00-R4	E-5	34L-83570-F0	E-9	
22W-27411-00-90	E-4	5Y1-83912-00	E-12	
34L-27412-00-R4	E-4	43F-83922-00	E-12	
22W-27421-00-90	E-4	437-83936-00	E-13	
34L-27422-01-R4	E-4		E-14	
120-27431-00	E-5	437-83936-10	E-14	
26F-27432-00-FH	E-5	5Y1-83941-00	E-12	
120-27433-00	E-5	5Y1-83942-00	E-12	
50T-27442-00-FH	E-5	30X-83972-00	E-12	
43F-28100-01	C-14	43F-83976-00	E-12	
34L-28185-00	C-14	34X-83980-01	E-13	
34Y-28351-10	E-6	47J-84115-00	E-10	
43F-28351-00	E-6			
43F-28368-20	E-6			

NUMERICAL INDEX

PART NO.	GRID NO.	GRID NO.	PART NO.	GRID NO.
233-84127-60	E-10	90116-10378	B-2	
43F-84131-00	E-10	90119-06063	C-14	
457-84146-85	E-10	90119-06101	D-3	
10V-84196-00	E-10	90123-08046	E-2	
10V-84198-00	E-10	90149-05110	B-9	
43F-84303-H0	E-10	90149-06011	D-10	
5G8-84321-H0	E-10	90149-06153	E-12	
5G2-84324-A0	E-10	90149-06197	D-10	
5G2-84332-60	E-10	90149-06200	D-10	
198-84334-60	E-10	90149-08067	C-7	
2F9-84375-00	E-10	90151-06017	C-10	
2F9-84397-01	E-10	90152-06010	C-5	
1M1-84521-60	E-11	90153-06042	E-12	
3Y1-84524-00	E-11	90159-06016	C-7	
15A-84536-00	E-11	90159-06060	E-6	
15A-84545-00	E-11	90159-06078	C-10	
5Y7-84700-00	E-11	90164-06017	B-15	
256-84714-61	E-11	90170-06010	E-12	
5Y1-84717-00	E-11	90170-06128	B-7	
4G1-84744-00	E-9	90170-10219	D-14	
3G1-85130-01	E-11	90170-16343	B-6	
33G-85132-00	E-11	90170-20274	C-7	
34L-8553A-00	E-14	90170-20327	C-7	
34L-85540-51	E-14	90171-14020	D-12	
90101-06288	E-4	90171-16024	D-15	
90101-06291	D-14	90175-06013	E-4	
90101-10308	D-13	90176-08026	B-4	
90101-12498	D-5	90179-06499	B-15	
90105-07087	B-8	90179-08148	E-2	
90105-08213	B-4	90179-10201	B-4	
90105-08214	B-4	90179-10279	B-4	
90105-10286	C-12	90179-14317	B-5	
90105-14102	D-6	90179-25033	D-6	
90109-06418	B-3	90185-10060	C-12	
90109-06419	B-9	90185-10120	D-4	
90109-06577	E-12	90185-12080	D-5	
90109-06757	D-12	90185-12119	D-3	
90109-06796	E-12		E-5	
90109-08397	D-9	90185-14070	D-4	
90109-08705	C-13	90201-044A2	E-11	
90109-08789	E-5	90201-05033	E-9	
90109-10759	D-4	90201-06067	C-12	
90109-10760	D-4	90201-062A8	D-4	
90109-120A3	D-3	90201-062G3	E-11	
90109-124A7	E-5	90201-06336	C-14	
90116-10087	C-2	90201-06380	D-10	
90116-10263	C-2	90201-06674	E-7	
90116-10348	D-14	90201-08083	E-12	

NUMERICAL INDEX

PART NO.	GRID NO.	PART NO.	GRID NO.	PART NO.	GRID NO.	PART NO.	GRID NO.	PART NO.	GRID NO.	PART NO.	GRID NO.
90201-08100	C-14	90243-06016	C-7	90460-51059	B-11	91316-06030	B-7	92901-10100	D-13	93210-15171	B-10
90201-08326	B-15	90249-12008	E-4	90462-10107	C-3		C-2	92901-10200	D-13	93210-19522	B-2
90201-08544	D-9	90267-32070	C-14	90462-16102	C-3		C-3	92901-14600	D-5	93210-21190	C-15
90201-08609	B-4	90267-32072	D-4	90464-20064	B-10	91316-06035	B-9	92906-05600	B-11	93210-22298	B-9
90201-08760	B-4	90267-40073	B-12	90465-14242	D-6		C-3	92906-06100	C-12	93210-32172	B-2
90201-08730	C-15	90267-40076	E-11	90467-09006	D-10	91316-06040	B-2		D-4	93210-36510	C-3
90201-08753	C-13	90267-48079	C-12	90467-10008	C-15		C-3		E-2	93210-36549	B-11
90201-100A1	D-6	90269-04003	D-6	90467-10039	B-11	91316-06045	C-2		E-12	93210-62446	B-2
90201-100E9	D-4	90280-05013	B-5	90467-14015	C-2	91316-06050	B-2	92906-06200	E-12	93210-64297	B-9
90201-100F7	D-4	90282-05013	B-6	90468-12006	D-6		C-3	92906-06600	B-2	93210-98473	B-4
90201-10118	E-2	90282-07042	C-7	90468-15009	E-2	91316-06055	B-2	92906-08100	C-12	93306-00426	C-9
90201-10124	B-4	90336-18038	C-5	90480-01141	C-15	91316-06060	C-2	92990-03200	C-14	93306-00431	C-9
90201-10135	C-6	90340-14079	B-2	90480-01385	C-15	91316-06080	B-9	92990-04200	B-11	93306-20209	D-12
90201-10590	B-4		C-3	90480-08216	D-10	91316-06125	B-2	92990-06100	B-15	93306-20310	D-14
90201-120A5	D-3	90340-36078	C-3	90480-10068	D-12	91401-16012	D-15		C-12	93306-20316	D-14
90201-12362	D-5	90380-14095	D-3	90480-12053	E-6	91401-16015	E-5		C-14	93306-30423	D-14
90201-12474	C-11	90380-14130	D-5	90480-13197	C-15	91401-20015	E-4		D-2	93306-30525	B-5
90201-13409	C-13	90380-22111	D-3	90480-14023	E-10	91401-25015	E-4		D-9	93306-30535	C-9
90201-140A6	B-5	90386-20120	D-3	90480-14229	C-12		E-5		D-11	93306-30540	C-9
90201-140G9	D-3	90386-20123	D-4	90501-05378	B-9	91401-30020	E-4		E-7	93306-30541	B-6
90201-14215	E-4	90387-060A7	C-12	90501-10245	E-4	91401-30025	D-5		E-11	93306-30710	B-5
90201-15238	D-4	90387-063F7	C-10	90501-10312	E-12	91401-30030	D-12		E-14	93310-634K2	B-5
90201-155K6	C-5	90387-06388	E-10	90501-12081	C-5		D-15	92990-06600	E-14	93315-11720	C-7
90201-15701	C-5	90387-06500	C-15	90501-16107	C-5	91701-05055	D-15	92990-08100	D-9	93315-31732	D-3
90201-15785	D-12	90387-06681	C-14	90501-22721	B-5	91701-06022	E-4	93101-14092	C-3	93316-00503	C-10
90201-17327	C-8	90387-07391	C-14	90501-26148	C-7	91701-08038	E-4	93101-25106	B-6	93317-11020	C-7
90201-20276	C-5	90387-085E1	C-13	90507-20002	D-14	91810-05018	B-4	93102-07261	B-2	93317-32231	D-3
	C-9	90387-121H1	D-3	90507-29009	E-5	92501-06008	B-15	93102-10207	C-5	93332-00008	D-6
90201-20279	E-5	90387-122J6	D-4	90508-14352	E-4	92501-06012	C-3	93102-11262	B-2	93332-00023	D-6
90201-20685	C-5	90387-152J3	D-12	90508-14524	C-6		C-12	93102-12106	B-3	93410-20038	C-5
90201-244A8	D-3	90387-16782	C-2	90508-14526	C-8	92501-06014	B-9		C-11	93440-12052	B-2
90201-251F6	D-4	90387-175K6	D-15	90508-18551	B-3	92501-06020	C-14	93102-17148	C-7	93440-25084	C-9
90201-301F4	B-5	90387-17783	C-2	90508-20023	E-4		E-7	93102-20108	C-5	93440-48079	D-5
90202-06010	D-10	90387-227H7	E-2	90508-29527	C-10		E-14	93102-20281	D-12	93450-24028	B-5
90206-06060	B-15	90387-440G3	D-3	90508-29629	C-11	92502-06035	E-7	93102-25226	E-7	93503-08007	B-9
90206-06765	D-11	90401-10034	E-2	90508-32529	C-5	92506-06012	D-4	93102-30072	D-14	93507-32009	C-5
90206-12075	B-7	90430-05126	B-9	90508-32690	E-4	92701-06012	C-2	93106-22019	D-3	93515-32029	C-8
90208-04029	D-6	90430-06014	B-3	90560-15240	D-12	92701-06015	D-11	93108-35004	D-11	93602-11144	D-5
90209-07256	D-10	90430-06166	B-10	91316-06012	D-7	92706-06030	B-2	93210-07135	B-9	93604-10011	C-10
90209-10131	E-12	90430-08119	C-7	91316-06016	B-10	92901-04100	B-13		C-2	93604-21193	D-5
90209-22191	C-9		C-15		C-3	92901-05600	D-6	93210-08521	B-7	93604-26132	D-5
90209-34254	B-5	90430-08178	B-4	91316-06018	B-2	92901-06200	C-7	93210-09350	B-9	93605-10090	B-5
90215-16242	B-6		C-2	91316-06020	B-11		E-4	93210-10197	B-9	93608-33046	C-11
90215-20197	C-7	90430-10027	E-15		C-3	92901-06600	B-8	93210-13361	B-9	93700-06004	D-4
90215-20231	C-7	90445-08782	E-14	91316-06025	B-2		C-6		C-3	93700-06005	D-4
90240-06009	E-5	90445-103A3	D-10		B-8		E-4	93210-14104	E-9	94130-211N0	D-12
90240-06040	E-4	90445-11753	C-15		C-3	92901-10100	C-12	93210-14369	B-2	94146-181N2	D-14
90240-14106	D-5	90460-46206	B-11	91316-06030	B-4		D-6		C-3	94212-18188	D-14

NUMERICAL INDEX

PART NO.	GRID NO.	PART NO.	GRID NO.	PART NO.	GRID NO.
94227-21123	D-12	97301-06016	E-14		
94330-21084	D-12	97302-06020	E-10		
94340-18086	D-14	97302-06025	E-11		
94416-21396	D-12	97306-06022	E-12		
94425-18421	D-14	97306-06025	C-12		
94580-40102	D-15	97306-08016	C-12		
94590-27126	B- 8	97311-08030	C- 5		
94680-50011	D-15	97311-10080	C-12		
94701-00241	B- 2	97316-06020	C-11		
94701-00275	B- 2	97321-06014	C- 9		
95301-05600	D- 6	97321-06016	B- 8		
95301-06600	C- 7		C- 5		
	E- 4	97322-06010	C- 9		
95301-10700	D- 6	97326-06025	E- 2		
95302-05600	E-11	97701-40530	E- 8		
95302-06600	C-14	97706-40506	B-11		
	E-11	98501-04014	B-13		
95302-08600	C-14	98501-05010	B-13		
95311-06600	D- 9	98501-05020	D- 6		
95311-06700	C- 6	98503-04010	B-14		
95311-08600	D- 9		E- 8		
95601-06100	E-12	98506-04018	D- 9		
95606-06100	E-12	98506-05016	B-11		
95611-06620	B- 2	98506-05020	E-12		
95701-06500	D- 3	98506-05030	E-12		
	E-14	98506-05035	E-12		
95702-12100	E- 8	98706-04012	E- 2		
95801-06010	E-15	98901-04006	B-14		
95801-06012	B-11	98901-06008	B- 9		
95801-06050	D- 3	98906-06010	B-15		
95801-08012	C-15	99001-09600	C-11		
95802-06010	D-11	99001-10600	C-11		
95806-06012	D- 6	99009-10400	C- 6		
95806-06030	C-14	99009-11400	B- 9		
95806-06040	E- 9	99009-15400	C- 5		
95806-08030	C-14	99009-20400	C- 5		
95811-08012	B-15		C- 9		
95811-10100	C-12	99510-08016	B- 4		
95816-08045	B-15		C- 2		
95821-08020	B-15	99510-10114	B- 2		
95821-10025	E- 4	99530-12016	C- 2		
	E- 5		C- 3		
	C-15				
95822-08012	D- 6				
95826-08035	D- 6				
95826-08040	D- 6				
97002-06016	E-14				
97301-06010	D-10				
97301-06016	D- 2				
	D-11				

M4

10

10

10

