



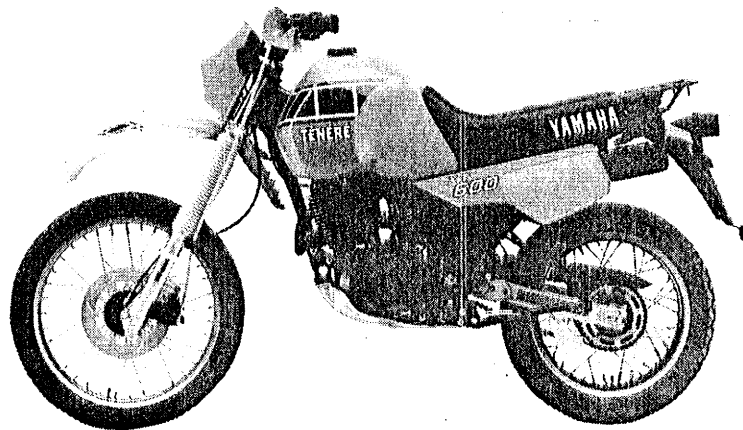
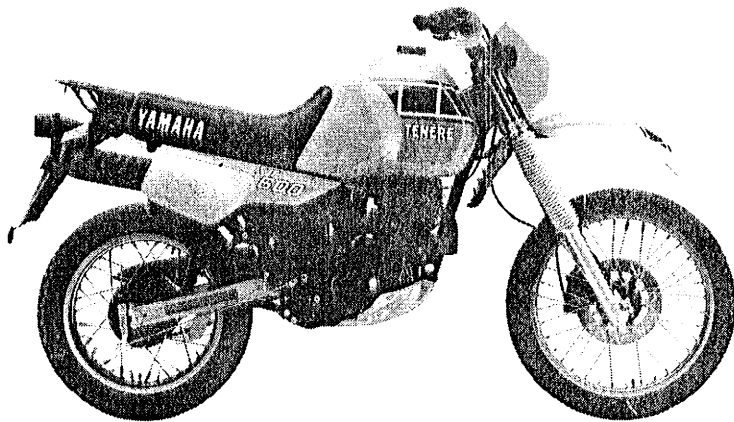
**YAMAHA**

**PARTS CATALOGUE**

**XT600Z (39E)**

**1339E-700E1**

**A2**



A3

# CONTENTS

## ENGINE

Cylinder Head .....	B2 ~ B3
Cylinder .....	B4
Crankshaft · Piston .....	B5 ~ B6
Valve .....	B7
Camshaft · Chain .....	B8
Oil Pump .....	B9 ~ B10
Intake .....	B11
Carburetor .....	B12 ~ B13
Exhaust .....	B14
Crankcase .....	B15
Crankcase Cover 1 .....	C2 ~ C3
Starter .....	C4 ~ C5
Clutch .....	C6 ~ C7
Transmission .....	C8 ~ C9
Shift Cam · Fork .....	C10
Shift Shaft .....	C11

## CHASSIS

Frame .....	C12 ~ C13
Fender .....	C14
Side Cover .....	C15
Rear Arm .....	D2 ~ D3
Rear Suspension .....	D4
Steering .....	D5
Front Fork .....	D6 ~ D8
Fuel Tank .....	D9
Seat .....	D10
Front Wheel .....	D11 ~ D12
Rear Wheel .....	D13 ~ D14
Steering Handle · Cable .....	D15 ~ E2

Stand · Footrest .....	E3 ~ E4
Cowling 1 .....	E5
Generator .....	E6
Flasher Light .....	E7
Meter .....	E8
Headlight .....	E9
Taillight .....	E10
Handle Switch · Lever .....	E11
Electrical 1 .....	E12
Electrical 2 .....	E13

## FOR S. AFRICA

Alternate .....	E15
-----------------	-----

## FOR NEW ZEALAND

Alternate (Engine) .....	F3
--------------------------	----

## INDEX

NUMERICAL INDEX .....	L1 ~ L4
PARTS NAME INDEX .....	M1 ~ M6

# FOREWORD

This Parts Catalogue is related to the parts in use for the Yamaha XT600Z (39E) When you are ordering replacement parts for the XT600Z (39E), refer to this Parts Catalogue and quote both part numbers and part names correctly.

1. Modifications or additions which have been made after issue of the Parts Catalogue will be announced in the Yamaha Parts News.  
It is advisable that according to the Yamaha Parts News you make necessary corrections to the Parts Catalogue on hand to keep it up-to-date.

## 2. Abbreviations

The following abbreviations are used in this Parts Catalogue.

- U.R. Use size (thickness) and/or number as required.
- U.N. Use as many as you need.
- A.P. Alternate Parts
- L.M. Local Made
- F# Frame No. (Applicable machine No.)

3. The parts marked with ( \* ) in the parts number column of this Catalogue are not supplied with by Yamaha, those have to be found locally.
4. Parts, which are to be supplied in the form of assemblies, are listed with an indention of one letter's space, and a dot ( . ) is put against the name of each part.

**EXAMPLE** CARBURETOR ASS'Y  
 . JET, pilot  
 . NOZZLE, main

## 5. Indication of No. of constituent parts for assembly

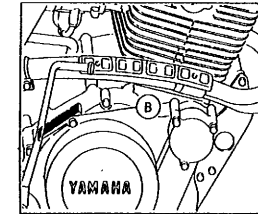
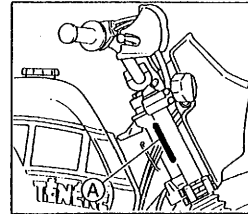
The numeral appearing to the right of each constituent part under the description indicates the quantity of such parts for each individual assembly unit.

**EXAMPLE**

Part No.	Description	Q'ty	Remarks
2F5-83310-60	FRONT FLASHER LIGHT ASS'Y	2	
115-83311-60	. BULB (6V-18W)	1	
1M1-83309-60	. REFLECTOR	1	

## 6. Initial Serial No. and Color Code

(A) Frame Serial No.	39E-000101 and following
(B) Engine Serial No.	39E-000101 and following



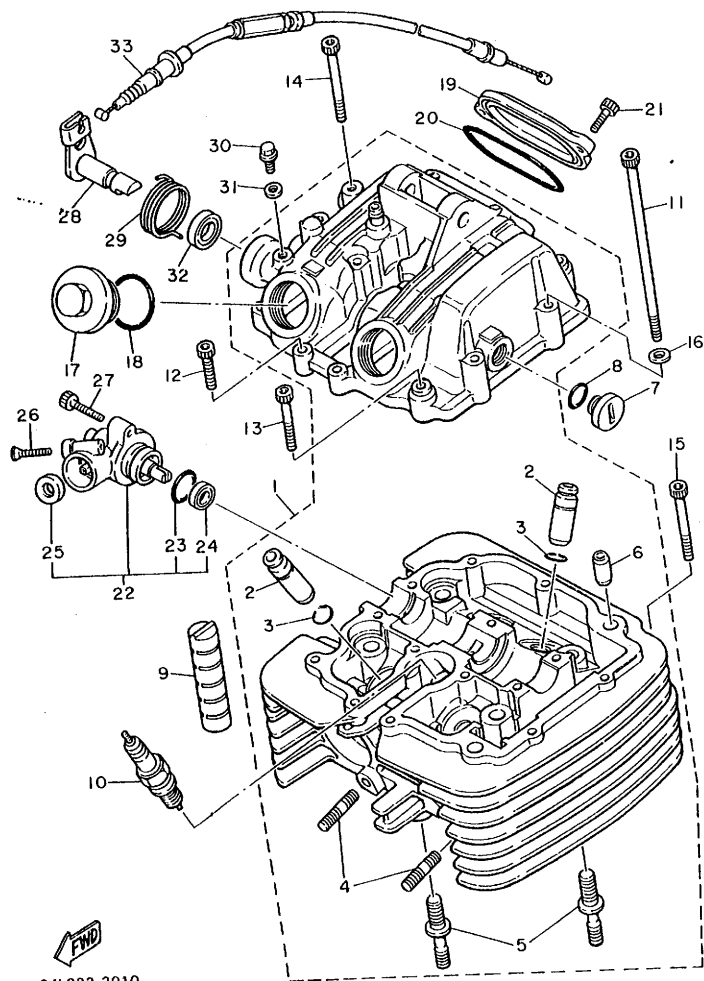
Color Code	Color Name	Abbreviate
G8	SKY BLUE	SYB
36	CLEAN WHITE	W

7. Applicable colors of graphics are represented in the "Remarks" column by the letter(s) appropriately picked out of the full word(s) showing such colors.

**EXAMPLE**

Part No.	Description	Q'ty	Remarks
2N4-24110-00-X5	FUEL TANK COMP.	1	MAXIM RED
3J1-24240-10	. GRAPHIC, fuel tank set	1	for MXR

FIG. 1 CYLINDER HEAD

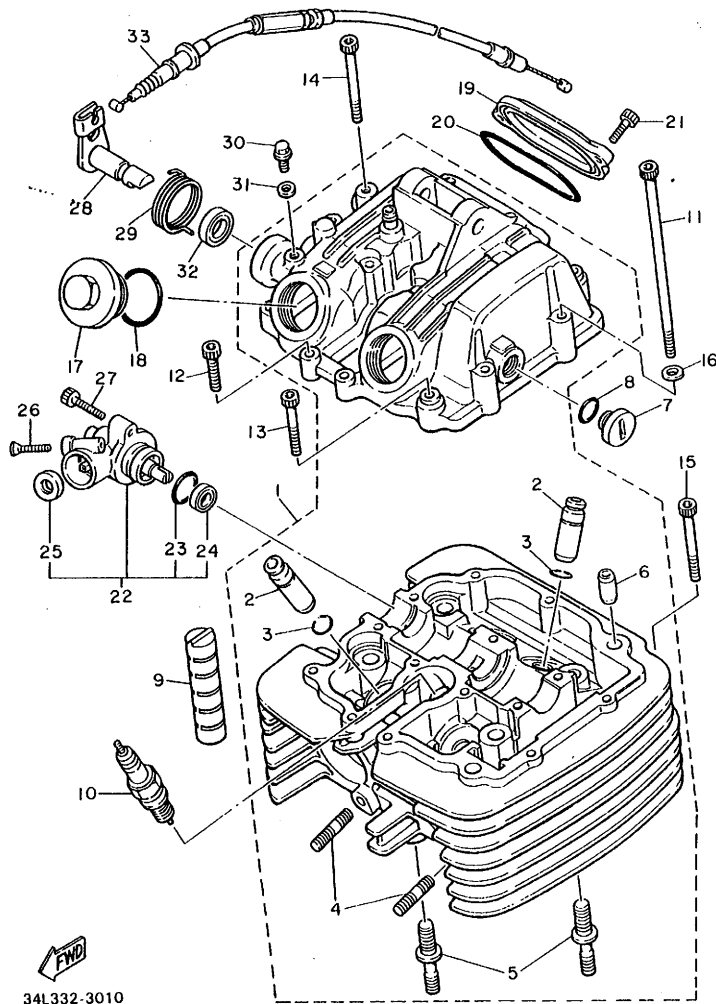


34L332-3010

REF. NO.	PART NO.	DESCRIPTION	Q'TY	REMARKS
1	34L-11101-00	CYLINDER HEAD ASSY	1	
2	4H7-11133-10	.GUIDE, intake valve	4	
3	93440-12052	.CIRCLIP	4	
4	95611-06620	.BOLT, stud	4	
5	90116-10378	.BOLT, stud	2	
6	91810-03014	.PIN, dowel	2	
7	90340-14079	PLUG, straight screw	1	
8	93210-14369	O-RING	1	
9	583-11127-00	ABSORBER 3	2	
10	94701-00189	PLUG, sPark (NGK D7EA)	1	
11	91316-06125	BOLT	2	
12	91316-06025	BOLT	4	
13	91316-06040	BOLT	3	
14	91316-06055	BOLT	7	
15	91316-06050	BOLT	1	
16	92906-06600	WASHER, Plate	2	
17	1H2-11186-00	PLUG, viewer	2	
18	93210-32172	O-RING	2	
19	5Y1-11187-00	COVER, cylinder head side 3	1	
20	93210-62523	O-RING	1	
21	91316-06018	BOLT	2	
22	5Y1-17800-00	GEAR UNIT ASSY, tacho. drive	1	
23	93210-19522	.O-RING	1	
24	93102-11262	.OIL SEAL	1	
25	93102-07261	.OIL SEAL	1	
26	92706-06030	SCREW, flat head	1	
27	91316-06025	BOLT	1	
28	5Y1-12288-00	CAM, decompression	1	

FIG. 1 CYLINDER HEAD

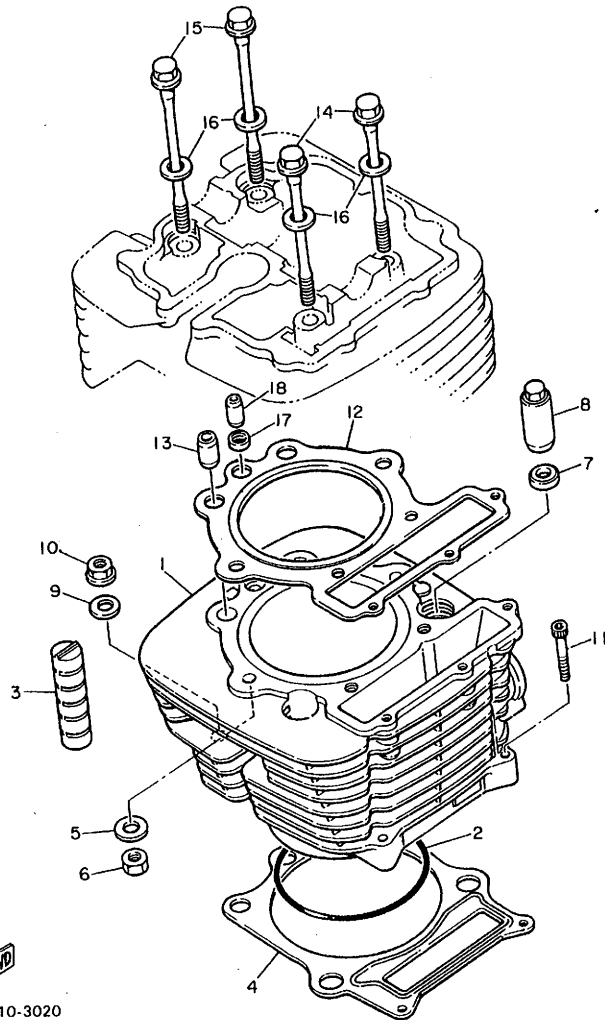
REF. NO.	PART NO.	DESCRIPTION	Q'TY	REMARKS
29	90508-18551	SPRING, torsion	1	
30	90109-06418	BOLT	1	
31	90430-06014	GASKET	1	
32	93102-12106	OIL SEAL	1	
33	34L-12292-00	CABLE, decompression	1	



34L332-3010

**B3**

FIG. 2 CYLINDER

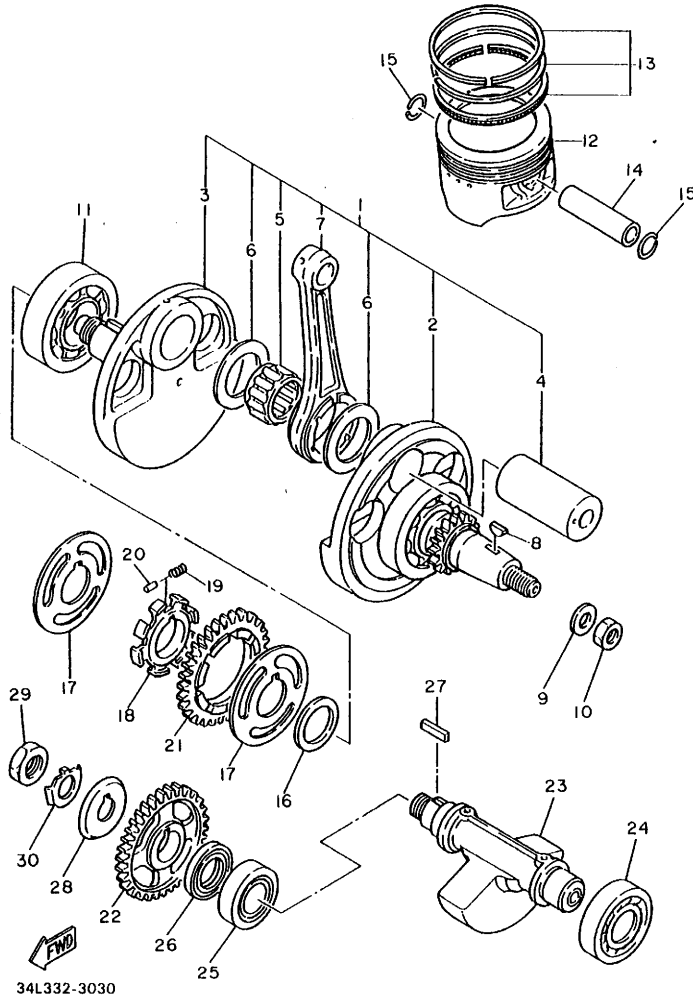


REF. NO.	PART NO.	DESCRIPTION	Q'TY	REMARKS.
1	34L-11310-00	CYLINDER	1	
2	93210-98473	D-RING	1	
3	583-11127-00	ABSORBER 3	2	
4	34K-11351-00	GASKET, cylinder	1	
5	90201-087G0	WASHER, Plate	2	
6	90176-08026	NUT, crown	2	
7	90201-10590	WASHER, Plate	2	
8	90179-10201	NUT	2	
9	90201-10124	WASHER, Plate	2	
10	90179-10279	NUT	2	
11	91316-06030	BOLT	2	
12	34K-11181-00	GASKET, cylinder head 1	1	
13	91810-05018	PIN, dowel	2	
14	90105-08213	BOLT, washer based	2	
15	90105-08214	BOLT, washer based	2	
16	90201-08609	WASHER, Plate	4	
17	90430-08178	GASKET	1	
18	91810-18016	PIN, dowel	1	

5Y1110-3020

**B4**

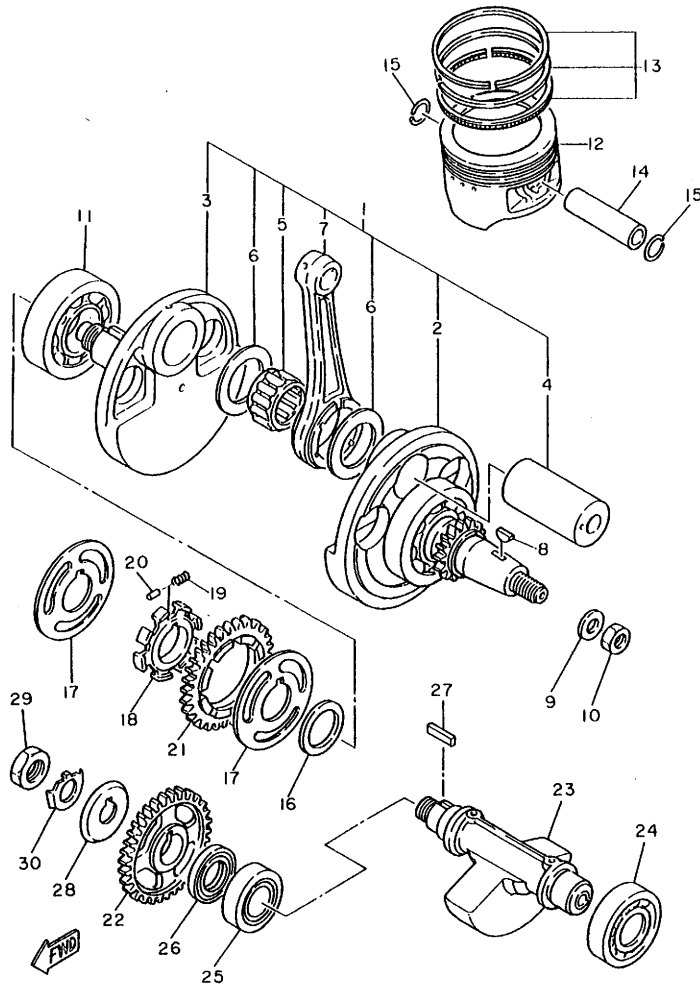
FIG. 3 CRANKSHAFT. PISTON



REF. NO.	PART NO.	DESCRIPTION	Q'TY	REMARKS
1	5Y1-11400-00	CRANKSHAFT ASSY	1	
2	5Y1-11412-09	.CRANK 1	1	
3	5Y1-11422-00	.CRANK 2	1	
4	5Y1-11681-00	.PIN, crank 1	1	
5	93310-634K2	.BEARING, cylindrical	1	
6	90209-34254	.WASHER	2	
7	5Y1-11651-00	.ROD, connecting	1	
8	90280-05013	KEY, woodruff	1	
9	90201-14226	WASHER, Plate	1	
10	90179-14317	NUT	1	
11	93306-30702	BEARING (B6307)	1	
12	34L-11631-00-A0	PISTON (STD)	1	UR
	34L-11636-00	PISTON (0.50MM D/S)	1	AP
	34L-11638-00	PISTON (1.00MM D/S)	1	AP
13	34L-11610-00	PISTON RING SET (STD)	1	UR
	34L-11610-20	PISTON RING SET (2ND D/S)	1	AP
	34L-11610-40	PISTON RING SET (4TH D/S)	1	AP
14	34K-11633-00	PIN, Piston	1	
15	93450-24028	CIRCLIP	2	
16	90201-301F4	WASHER, Plate	1	
17	5Y1-11565-00	WASHER, bearing cover	2	
18	5Y1-11496-01	BOSS, buffer	1	
19	90501-22721	SPRING, compression	8	
20	93605-10090	PIN, dowel	4	
21	5Y1-11536-01	GEAR, drive (44T)	1	
22	5Y1-11531-00	GEAR, blank wt 44t	1	
23	34K-11454-00	WEIGHT 1	1	
24	93306-30525	BEARING (B6305)	1	

FIG. 3 CRANKSHAFT. PISTON

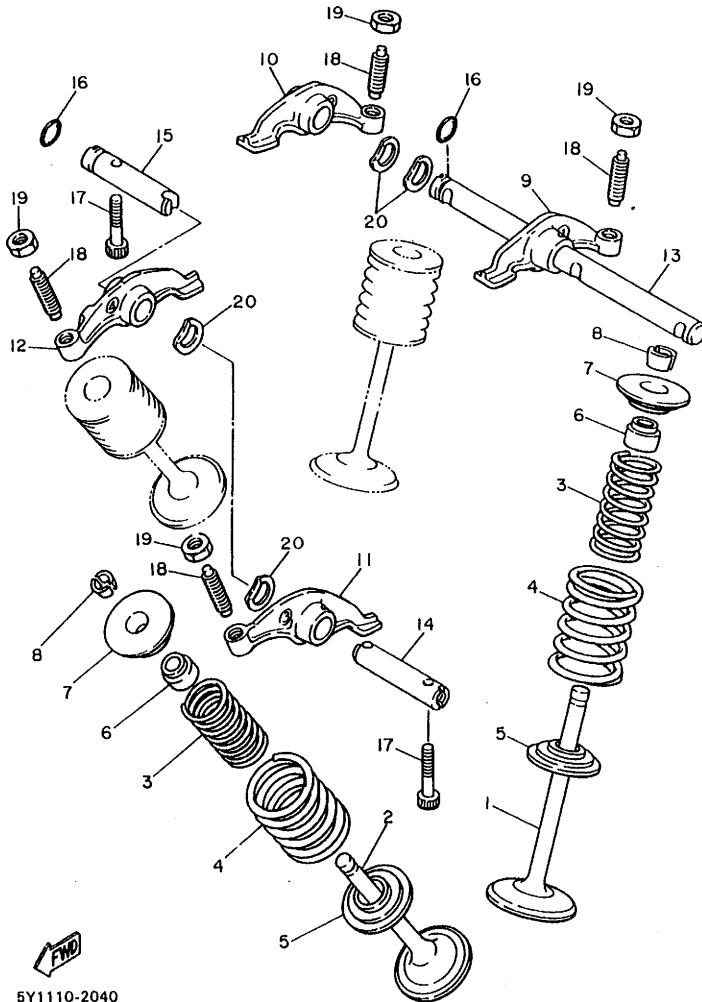
REF. NO.	PART NO.	DESCRIPTION	Q'TY	REMARKS
25	93313-92513	BEARING, cylindrical	1	
26	93101-25106	OIL SEAL	1	
27	90282-05013	KEY, straight	1	
28	34K-11145-00	PLATE, breather 2	1	
29	90170-16326	NUT	1	
30	90215-16230	WASHER, lock	1	



34L332-3030

**B6**

FIG. 4 VALVE

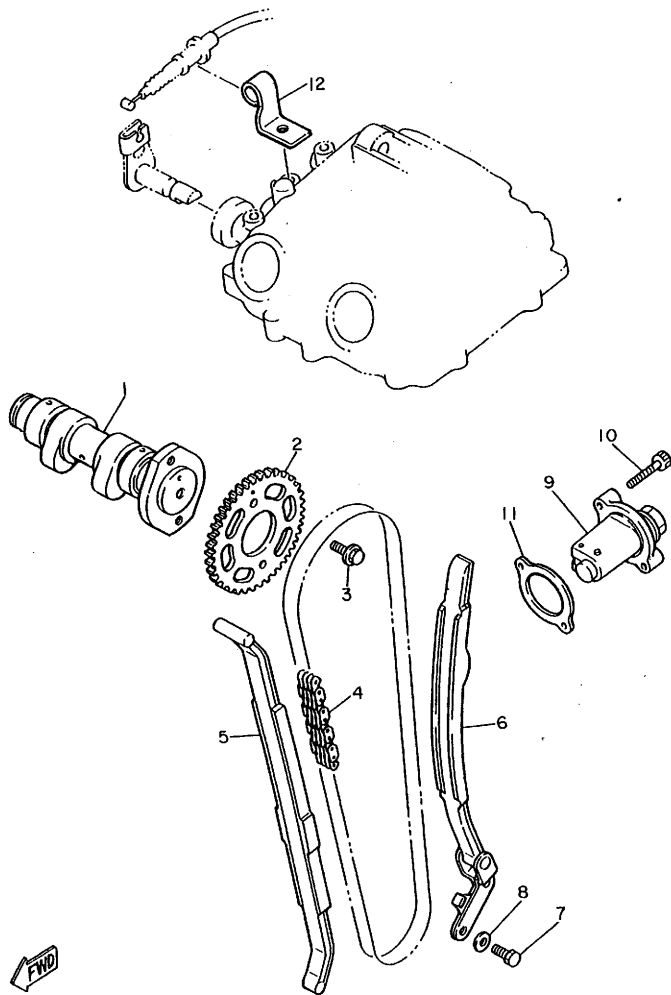


REF. NO.	PART NO.	DESCRIPTION	Q'TY	REMARKS
1	5Y1-12111-00	VALVE, intake	2	
2	34K-12121-00	VALVE, exhaust	2	
3	5Y1-12113-00	SPRING, valve inner	4	
4	5Y1-12114-00	SPRING, valve outer	4	
5	4H7-12116-00	SEAT, valve spring	4	
6	1J7-12119-01	SEAL, valve stem	4	
7	2F3-12117-00	RETAINER, valve spring	4	
8	1J7-12118-00	COTTER, valve	8	
9	34K-12151-00	ARM, valve rocker	1	
10	34K-12161-00	ARM, valve rocker 2	1	
11	34K-12162-00	ARM, valve rocker 3	1	
12	34K-12163-00	ARM, valve rocker 4	1	
13	5Y1-12146-00	SHAFT, rocker	1	
14	5Y1-12156-00	SHAFT, rocker 2	1	
15	5Y1-12166-00	SHAFT, rocker 3	1	
16	93210-08521	O-RING	2	
17	91316-06030	BOLT	2	
18	3Y1-12159-00	SCREW, valve adjusting	4	
19	90170-06128	NUT	4	
20	90206-12075	WASHER, wave	4	

5Y1110-2040

**B7**

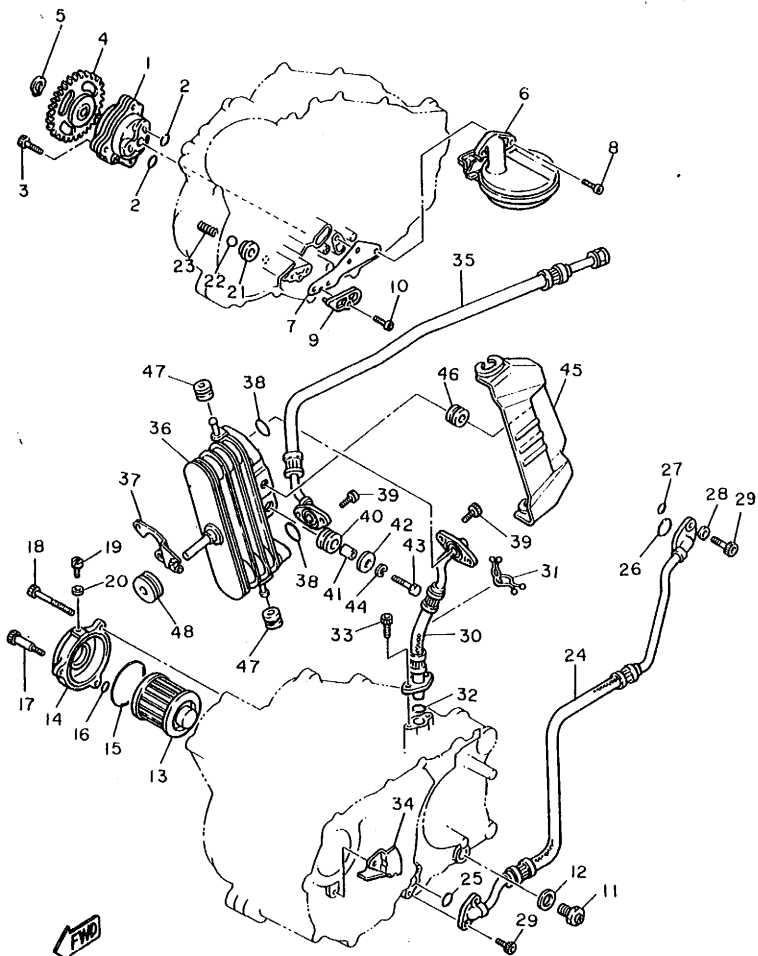
FIG. 5 CAMSHAFT. CHAIN



REF. NO.	PART NO.	DESCRIPTION	Q'TY	REMARKS
1	5Y1-12170-00	CAMSHAFT ASSY 1	1	
2	5Y1-12176-00	SPROCKET 46T	1	
3	90105-07087	BOLT, washer based	2	
4	94590-27126	CHAIN	1	
5	5Y1-12231-00	GUIDE, stopPer 1	1	
6	5Y1-12241-00	GUIDE, stopPer 2	1	
7	97321-06016	BOLT	2	
8	92901-06600	WASHER, Plate	2	
9	5Y1-12210-00	TENSIONER ASSY, cam chain	1	
10	91316-06025	BOLT	2	
11	4X7-12213-00	GASKET, tensioner case	1	
12	5Y1-12283-00	BRACKET, decomPression	1	

5Y1110-2050

FIG. 6 OIL PUMP

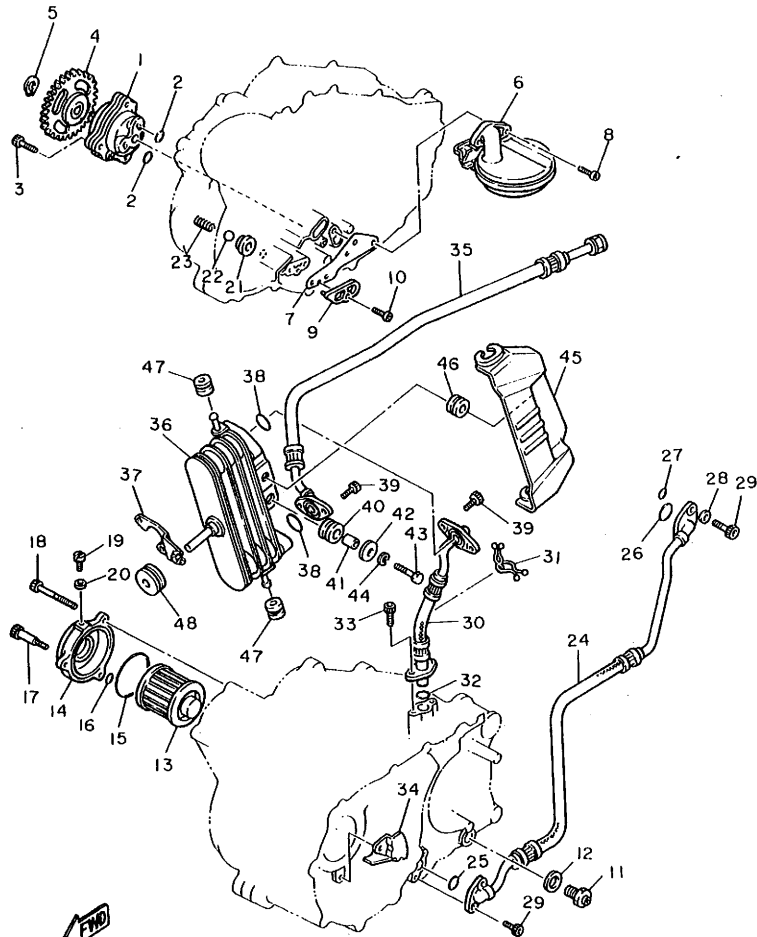


34L332-3060

REF. NO.	PART NO.	DESCRIPTION	Q'TY	REMARKS
1	5Y1-13300-00	OIL PUMP ASSY	1	
2	93210-13361	O-RING	2	
3	91316-06035	BOLT	3	
4	5Y1-13325-00	GEAR, PumP driven	1	
5	93410-11002	CIRCLIP	1	
6	5Y1-W1343-00	STRAINER COMP.	1	
7	5Y1-13415-01	SEAL, oil strainer	1	
8	92501-06014	SCREW, Pan head	2	
9	5Y1-15427-00	COVER, caP 2	1	
10	92501-06014	SCREW, Pan head	1	
11	11H-13455-00	PLUG	1	
12	214-11198-01	GASKET	1	
13	4X7-13440-01	ELEMENT ASSY, oil cleaner	1	
14	583-13447-00	COVER, oil element	1	
15	93210-64297	O-RING	1	
16	93210-07135	O-RING	1	
17	90109-06419	BOLT	1	
18	91316-06080	BOLT	2	
19	90149-05110	SCREW	1	
20	90430-05128	GASKET	1	
21	583-13113-00	SEAT, check ball	1	
22	93503-08007	BALL	1	
23	90501-05378	SPRING, comPression	1	
24	34L-13464-00	HOSE, oil 1	1	
25	93210-10197	O-RING	1	
26	93210-22298	O-RING	1	
27	93210-09350	O-RING	2	
28	90430-06166	GASKET	2	

**B9**

FIG. 6 OIL PUMP

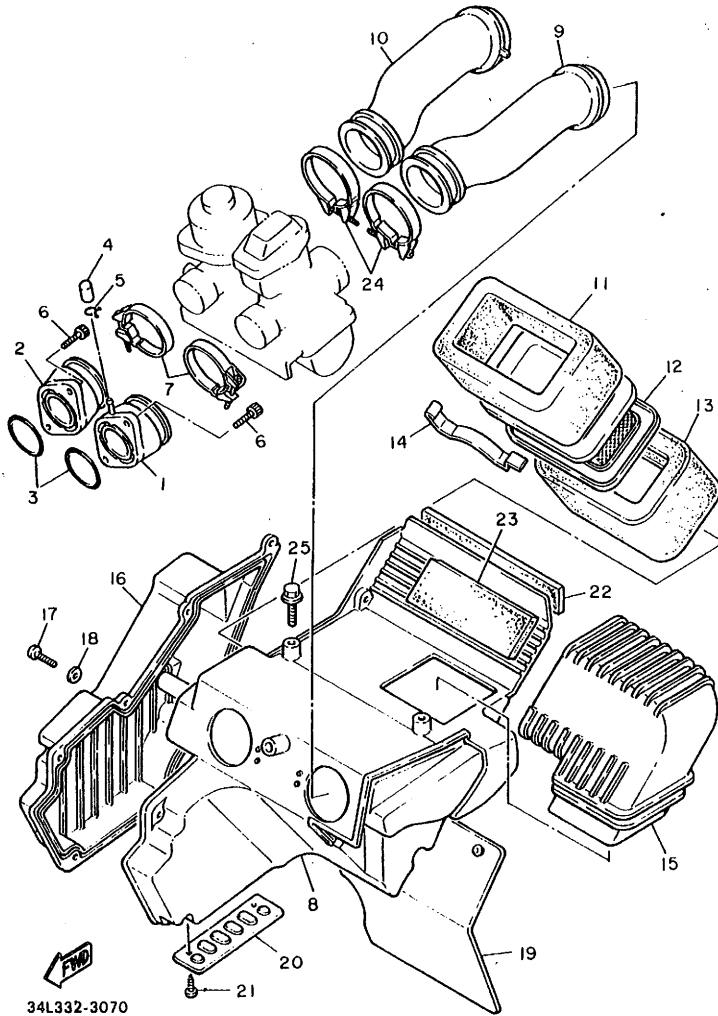


34L332-3060

REF. NO.	PART NO.	DESCRIPTION	Q'TY	REMARKS
29	91316-06016	BOLT	4	
30	34L-13465-01	HOSE, oil 2	1	
31	90464-19057	CLAMP	1	
32	93210-15171	O-RING	1	
33	91316-06016	BOLT	2	
34	5Y1-13371-00	PLATE	1	
35	34L-13466-01	HOSE, oil cooler	1	
36	34L-13470-00	OIL COOLER ASSY	1	
37	34L-13472-01	HOLDER, oil cooler 1	1	
38	93210-14579	O-RING	2	
39	91316-06012	BOLT	4	
40	90480-15235	GROMMET	2	
41	90387-060A7	COLLAR	2	
42	90209-06174	WASHER	2	
43	97306-06020	BOLT	2	
44	92906-06100	WASHER, sPring	2	
45	34L-13443-00	COVER, oil cooler	1	
46	90480-13197	GROMMET	1	
47	90480-12053	GROMMET	2	
48	90480-16233	GROMMET	1	

**B10**

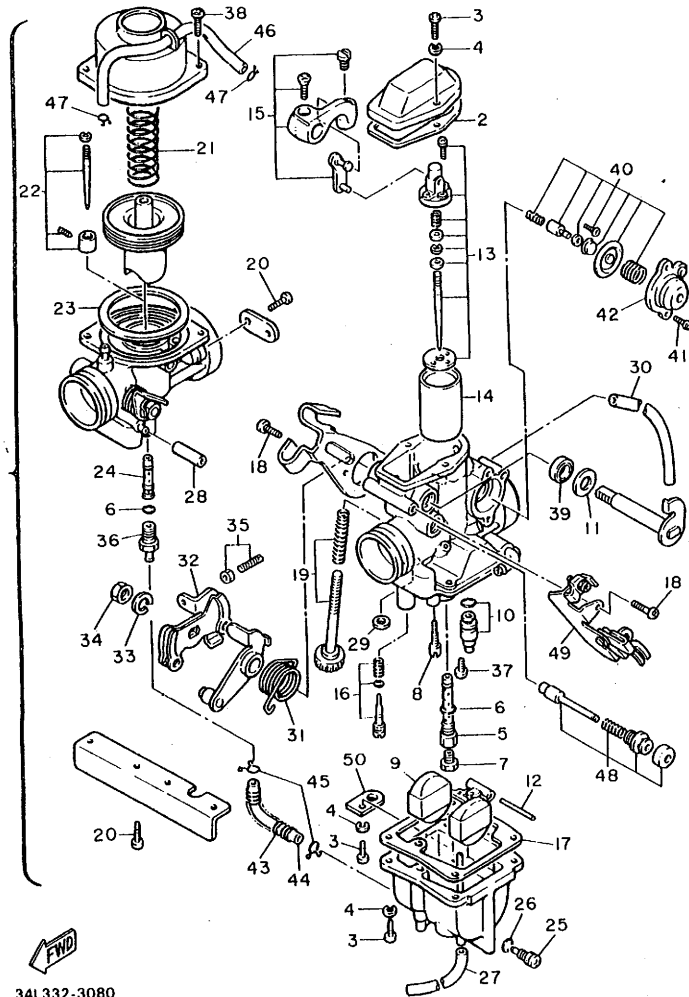
FIG. 7 INTAKE



REF. NO.	PART NO.	DESCRIPTION	Q'TY	REMARKS
1	34K-13586-00	JOINT, carburetor 1	1	
2	34K-13596-00	JOINT, carburetor 2	1	
3	93210-36549	O-RING	2	
4	16G-13569-00	PLUG, blind	1	
5	90467-10039	CLIP	1	
6	91316-06020	BOLT	4	
7	90460-46206	CLAMP, hose	2	
8	34L-14401-00	AIR CLEANER CASE ASSY	1	
9	34K-14453-00	JOINT, air cleaner 1	1	
10	34K-14454-00	JOINT	1	
11	34L-14451-00	ELEMENT, air cleaner	1	
12	34L-14458-00	GUIDE	1	
13	34L-14461-00	ELEMENT, air cleaner 2	1	
14	2J2-14468-00	PLATE, element fitting	1	
15	34L-14437-00	DUCT	1	
16	34L-14412-00	CAP, cleaner case 1	1	
17	98506-05016	SCREW, Pan head	6	
18	92906-05600	WASHER, Plate	6	
19	34L-21621-00	FLAP	1	
20	34L-1442F-00	PROTECTOR	1	
21	97706-40506	SCREW, tapping	2	
22	34L-14426-00	DAMPER 2	1	
23	34L-14425-00	DAMPER 1	1	
24	90460-51059	CLAMP, hose	2	
25	95801-06012	BOLT, flange	3	

**B11**

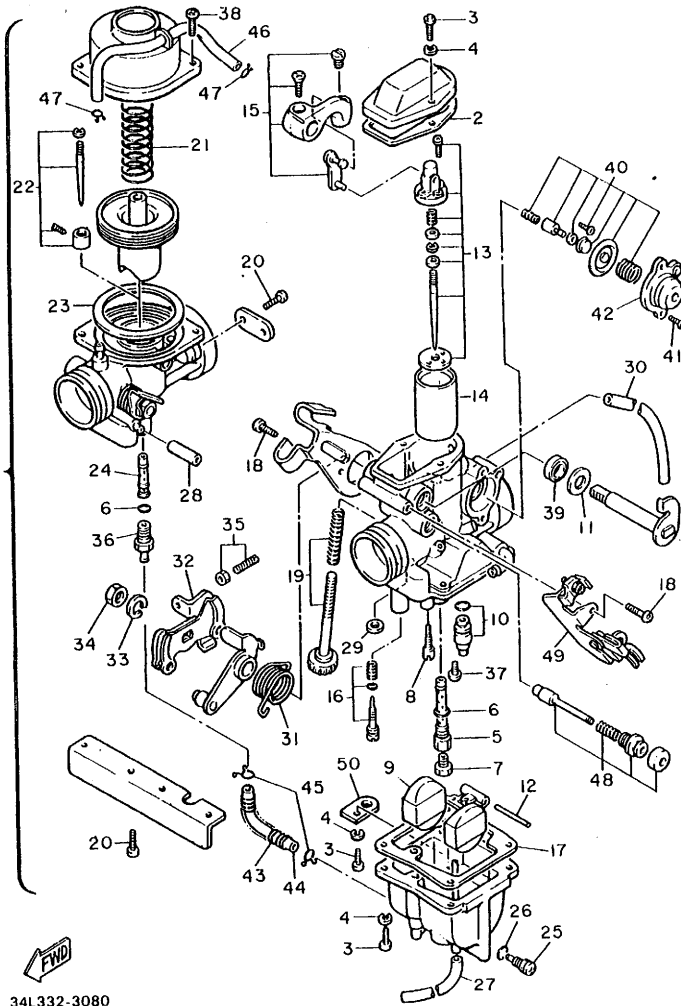
FIG. 8 CARBURETOR



34L332-3080

REF. NO.	PART NO.	DESCRIPTION	Q'TY	REMARKS
1	34L-14301-00	CARBURETOR ASSY 1	1	
2	5Y1-14198-00	•GASKET	1	
3	98501-04014	•SCREW, Pan head	6	
4	92901-04100	•WASHER, sPring	6	
5	5Y3-14341-00	•NOZZLE, main	1	
6	360-24512-00	•GASKET	2	
7	288-14343-63	•JET, main (#126)	1	
8	5H0-14342-24	•JET, Pilot (# 48)	1	
9	5Y1-14385-00	•FLOAT	1	
10	5Y1-14107-00	•NEEDLE VALVE SET	1	
11	5Y1-14357-00	•WASHER, Plain	1	
12	689-14386-00	•PIN, float	1	
13	34L-1490J-10	•NEEDLE SET	1	
14	5Y1-14311-45	•VALVE, throttle	1	
15	5Y1-14203-00	•CABLE CONNECTOR SET	1	
16	5Y3-14105-00	•PILOT SCREW SET	1	
17	5Y1-14384-00	•GASKET, float chamber	1	
18	5Y1-14325-00	•SCREW, Pan head	3	
19	34K-14103-00	•THROTTLE SCREW SET	1	
20	98501-05010	•SCREW, Pan head	6	
21	5Y1-14286-00	•SPRING	1	
22	5Y3-1490J-01	•NEEDLE SET	1	
23	5Y1-14398-00	•GASKET	1	
24	5Y1-14355-00	•NOZZLE, main 2	1	
25	5Y1-14115-00	•PLUG, screw	1	
26	5Y1-14397-00	•O-RING	1	
27	5Y1-14396-00	•PIPE	1	
28	5Y1-14349-00	•PIPE	1	

FIG. 8 CARBURETOR

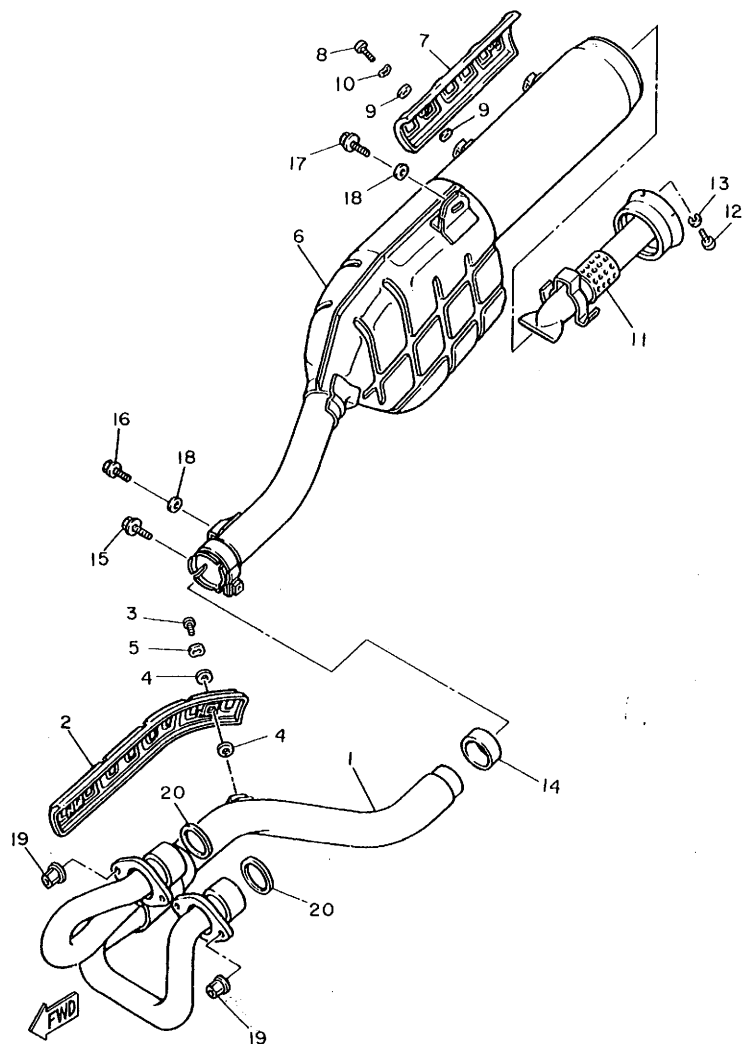


34L332-3080

REF. NO.	PART NO.	DESCRIPTION	Q'TY	REMARKS
29	5Y1-14536-00	.GASKET	1	
30	34K-14197-00	.PIPE	1	
31	5Y1-14131-00	.SPRING, throttle valve	1	
32	34K-14305-00	.THROTTLE LEVER COMP	1	
33	5Y1-14356-00	.WASHER, spring	1	
34	5Y1-14358-00	.NUT	1	
35	34K-1490K-00	.STOP SCREW SET	1	
36	5Y1-14343-63	.JET, main (#126)	1	
37	98901-04006	.SCREW, bind	1	
38	5Y1-14216-00	.SCREW	2	
39	5Y1-14572-00	.SEAL	2	
40	5Y1-1490A-00	.DIAPHRAGM SET, 1	1	
41	98503-04010	.SCREW, Pan head	2	
42	5Y1-14293-00	.COVER 1	1	
43	5Y1-14556-00	.SPRING	1	
44	5Y1-14148-00	.PIPE	2	
45	5Y1-14137-00	.CLIP	1	
46	5Y1-14149-00	.PIPE	2	
47	5Y1-14159-00	.CLIP	1	
48	5Y1-1410A-00	.STARTER SET	1	
49	34L-14905-00	.LEVER, starter	1	
50	5Y1-14146-00	.PLATE	1	

**B13**

FIG. 9 EXHAUST

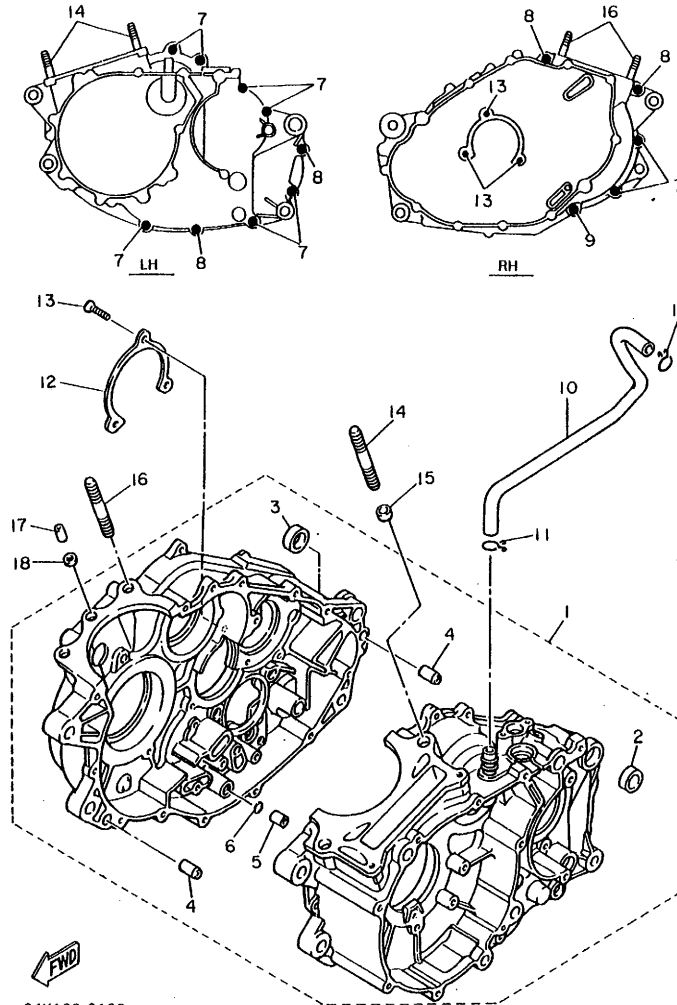


34L351-3090

REF. NO.	PART NO.	DESCRIPTION	Q'TY	REMARKS
1	34K-14611-00	PIPE, exhaust 1	1	
2	34K-14628-00	PROTECTOR, exhaust Pipe	1	
3	90164-06017	SCREW, tapping	2	
4	30X-14766-00	WASHER, Protector	4	
5	90206-06060	WASHER, wave	2	
6	34L-14711-00	MUFFLER 1	1	
7	34L-14728-00	PROTECTOR, muffler 2	1	
8	98906-06010	SCREW, bind	2	
9	583-14766-00	WASHER, Protector	4	
10	90206-06060	WASHER, wave	2	
11	34L-14752-00	PIPE, outlet	1	
12	92501-06008	SCREW, Pan head	1	
13	92901-06100	WASHER, spring	1	
14	34K-14714-00	GASKET, muffler	1	
15	95816-08045	BOLT, flange	1	
16	95811-08012	BOLT, flange	1	
17	95821-08020	BOLT, flange	1	
18	90201-08326	WASHER, Plate	2	
19	90179-06306	NUT	4	
20	5Y1-14613-00	GASKET, exhaust Pipe	2	

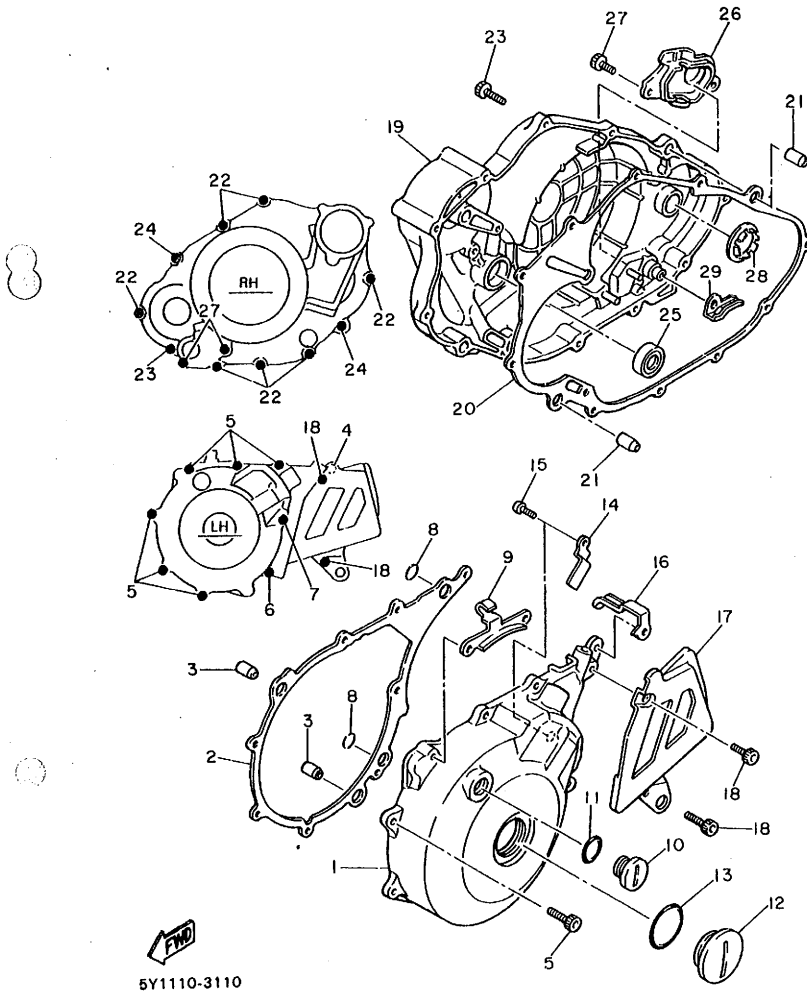
**B14**

FIG. 10 CRANKCASE



REF. NO.	PART NO.	DESCRIPTION	Q'TY	REMARKS
1	34L-15100-00	CRANKCASE ASSY	1	
2	90387-17783	.COLLAR	1	
3	90387-16782	.COLLAR	1	
4	91830-22016	.PIN, dowel	2	
5	91810-18016	.PIN, dowel	1	
6	93210-07135	.O-RING	1	
7	91316-06030	BOLT	9	
8	91316-06045	BOLT	4	
9	91316-06060	BOLT	1	
10	34L-11166-00	PIPE, breather 1	1	
11	90467-14015	CLIP	2	
12	5Y1-15383-00	PLATE, bearing cover	1	
13	92701-06012	SCREW, flat head	3	
14	90116-10087	BOLT, stud	2	
15	91830-24016	PIN, dowel	2	
16	90116-10263	BOLT, stud	2	
17	91810-18016	PIN, dowel	1	
18	90430-08178	GASKET	1	

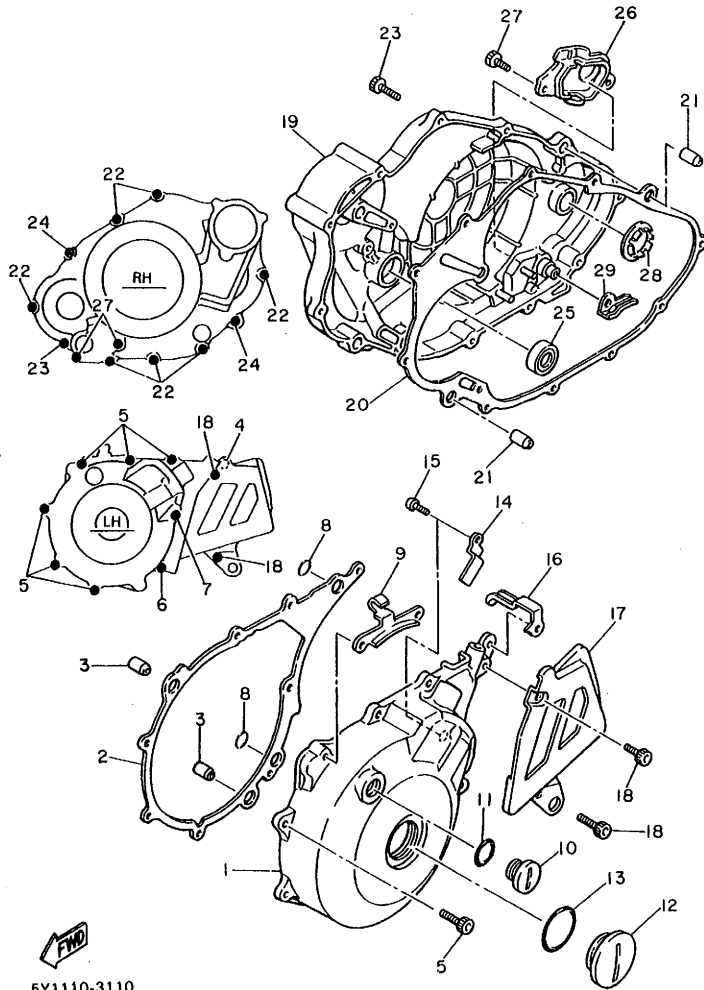
FIG. 11 CRANKCASE COVER 1



REF. NO.	PART NO.	DESCRIPTION	Q'TY	REMARKS.
1	34K-15411-00	COVER, crankcase 1	1	
2	5Y1-15451-01	GASKET, crankcase cover	1	
3	91830-22016	PIN, dowel	2	
4	91316-06020	BOLT	1	
5	91316-06025	BOLT	6	
6	91316-06040	BOLT	1	
7	91316-06050	BOLT	1	
8	93210-13361	O-RING	2	
9	5Y1-15441-00	HOLDER, clutch cable	1	
10	90340-14079	PLUG, straight screw	1	
11	93210-14369	O-RING	1	
12	90340-36078	PLUG, straight screw	1	
13	93210-36510	O-RING	1	
14	90462-16102	CLAMP	1	
15	92501-06012	SCREW, Pan head	1	
16	90462-10107	CLAMP	1	
17	5Y1-15421-01	COVER, crankcase 2	1	
18	91316-06016	BOLT	2	
19	5Y1-15431-00	COVER, crankcase 3	1	
20	34K-15462-00	GASKET, crankcase cover 3	1	
21	91830-22016	PIN, dowel	2	
22	91316-06025	BOLT	7	
23	91316-06030	BOLT	1	
24	91316-06035	BOLT	2	
25	93101-14092	OIL SEAL	1	
26	5Y1-15417-00	COVER, caP	1	
27	91316-06016	BOLT	2	
28	5Y1-15645-00	SHIM, kick shaft	1	

FIG. 11 CRANKCASE COVER 1

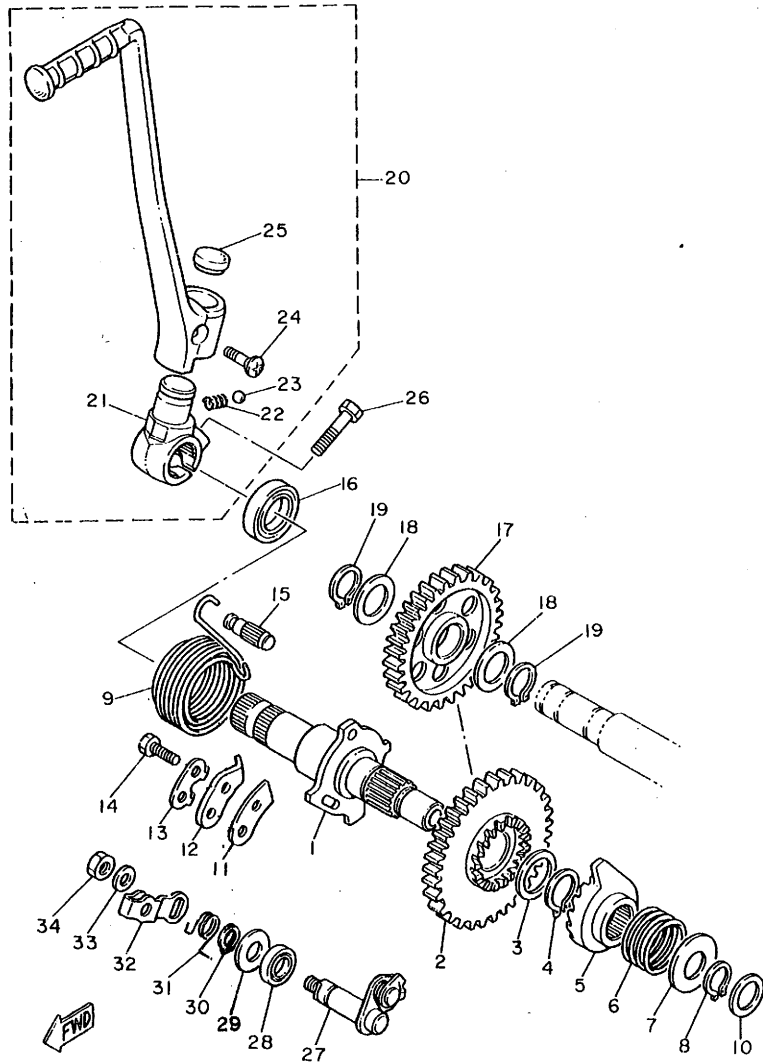
REF. NO.	PART NO.	DESCRIPTION	Q'TY	REMARKS
29	5Y1-1562F-01	PLATE, decomP	1	



5Y1110-3110

C3

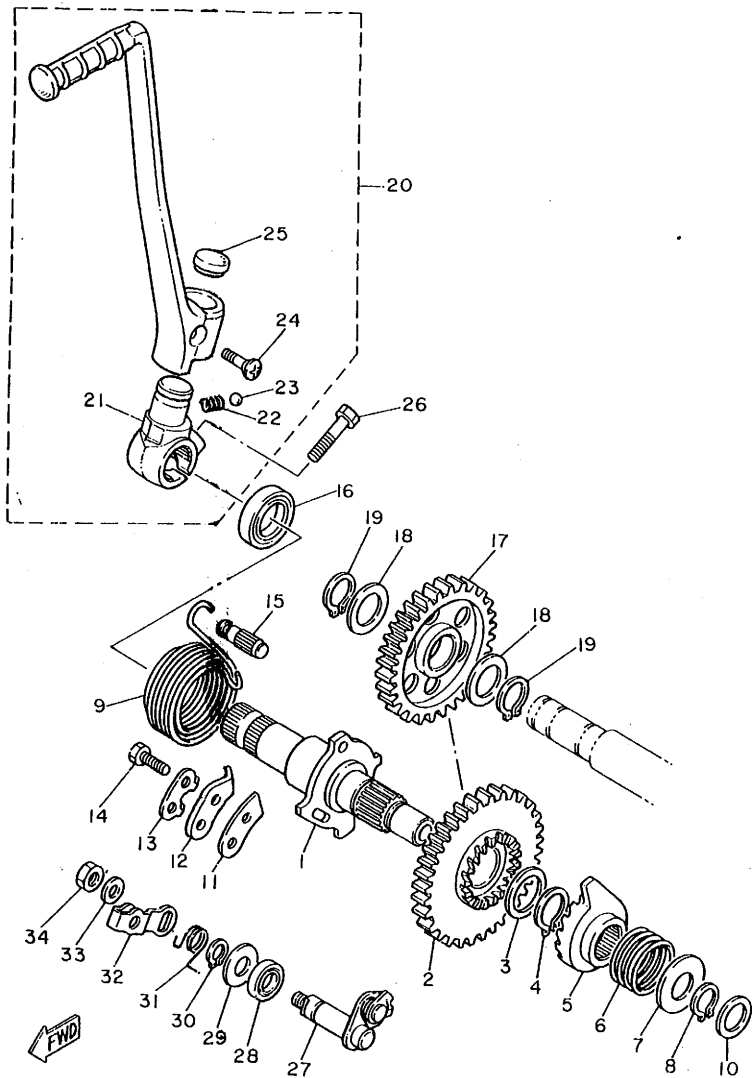
FIG. 12 STARTER



5Y1110-2130

REF. NO.	PART NO.	DESCRIPTION	Q'TY	REMARKS
1	5Y1-15660-00	KICK AXLE ASSY	1	
2	5Y1-15641-00	GEAR, kick 35t	1	
3	90201-20685	WASHER, Plate	1	
4	93410-20038	CIRCLIP	1	
5	5Y1-15671-00	WHEEL, ratchet	1	
6	90501-16107	SPRING, compression	1	
7	168-15676-00	COVER, spring	1	
8	93410-15005	CIRCLIP	1	
9	90508-32529	SPRING, torsion	1	
10	90201-15701	WASHER, Plate (1.0T)	1	
11	2K7-15668-00	STOPPER	1	
12	214-15674-00	GUIDE, ratchet wheel	1	
13	214-15686-00	WASHER, lock	1	
14	97321-06016	BOLT	2	
15	248-15668-00	STOPPER	1	
16	93102-20108	OIL SEAL	1	
17	5Y1-15651-00	GEAR, sprocket idle 31t	1	
18	90201-20276	WASHER, Plate	2	
19	93410-20009	CIRCLIP	2	
20	5Y1-15620-00	KICK CRANK ASSY	1	
21	5Y1-15621-00	BOSS, kick crank	1	
22	90501-12081	SPRING, compression	1	
23	93507-32009	BALL	1	
24	90152-06010	SCREW, countersunk	1	
25	90336-18038	PLUG, taper	1	
26	97311-08030	BOLT	1	
27	3Y1-1561A-02	DECOMP. LEVER ASSY	1	
28	93102-10207	OIL SEAL	1	

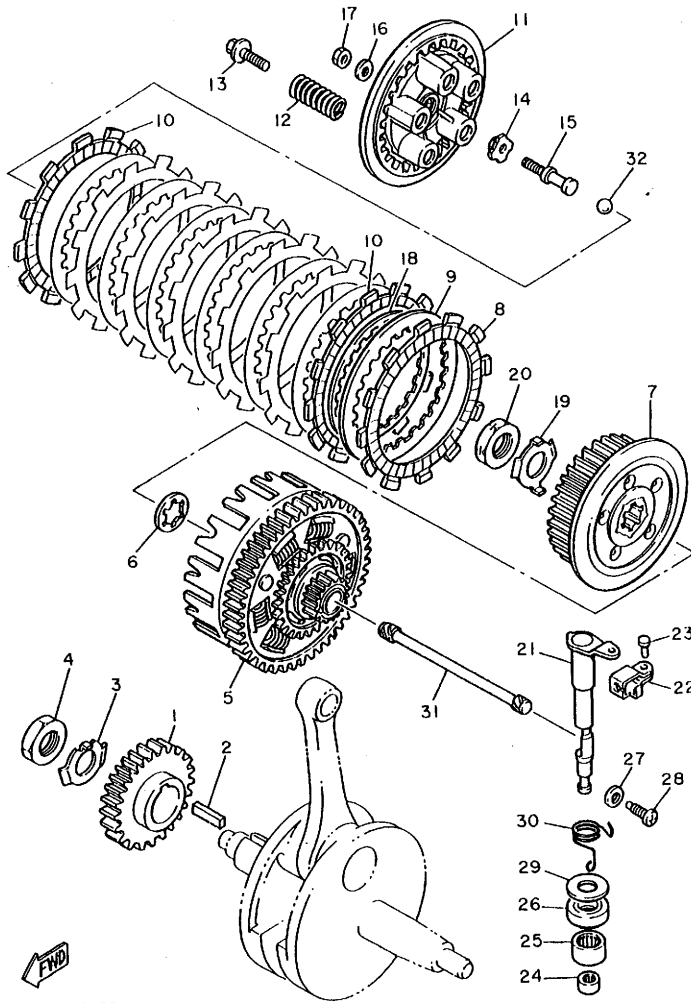
FIG. 12 STARTER



REF. NO.	PART NO.	DESCRIPTION	Q'TY	REMARKS
29	90201-10135	WASHER, Plate	1	
30	93410-10025	CIRCLIP	1	
31	90508-14524	SPRING, torsion	1	
32	5Y1-1561G-00	LEVER, cable	1	
33	92901-06600	WASHER, Plate	1	
34	95311-06700	NUT	1	

5Y1110-2130

FIG. 13 CLUTCH



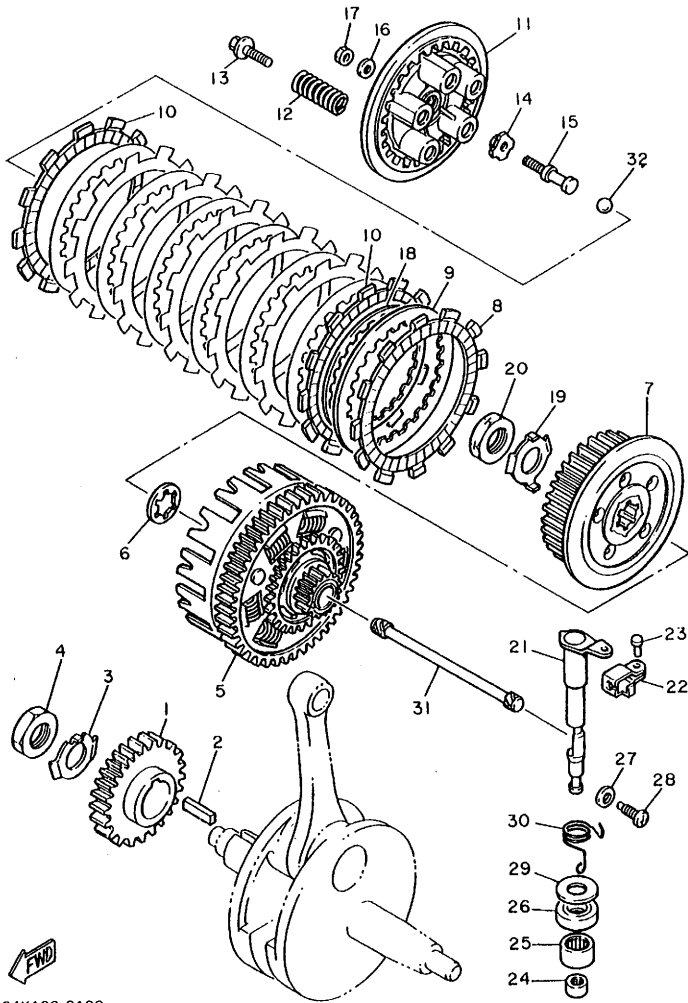
34K100-3130

REF. NO.	PART NO.	DESCRIPTION	Q'TY	REMARKS
1	34K-16111-00	GEAR, Primary drive(31T)	1	
2	90282-07042	KEY, straight	1	
3	90215-20197	WASHER, lock	1	
4	90170-20274	NUT	1	
5	34L-16150-00	PRIMARY DRIVEN GEAR COMP.(74T)	1	
6	3Y1-16154-00	PLATE, thrust 1	1	
7	5Y1-16371-01	BOSS, clutch	1	
8	5Y1-16321-00	PLATE, friction	6	
9	360-16325-00	PLATE, clutch 2	7	
10	5Y1-16331-00	PLATE, friction 2	2	
11	5Y1-16351-00	PLATE, Pressure 1	1	
12	90501-26148	SPRING, compression	5	
13	90159-06016	SCREW, with washer	5	
14	1W1-16358-00	PLATE, Push	1	
15	5Y1-16356-00	ROD, Push 1	1	
16	92901-06200	WASHER, Plain	1	
17	95301-06600	NUT	1	
18	5Y1-16383-00	SPRING, clutch boss	1	
19	90215-20231	WASHER, lock	1	
20	90170-20327	NUT	1	
21	34K-16381-00	PUSH LEVER COMP.	1	
22	214-16389-00	JOINT	1	
23	90243-06016	PIN	1	
24	93317-11020	BEARING, cylindrical	1	
25	93315-11720	BEARING, cylindrical	1	
26	93102-17148	OIL SEAL	1	
27	90430-08119	GASKET	1	
28	90149-08067	SCREW	1	

C6

FIG. 13 CLUTCH

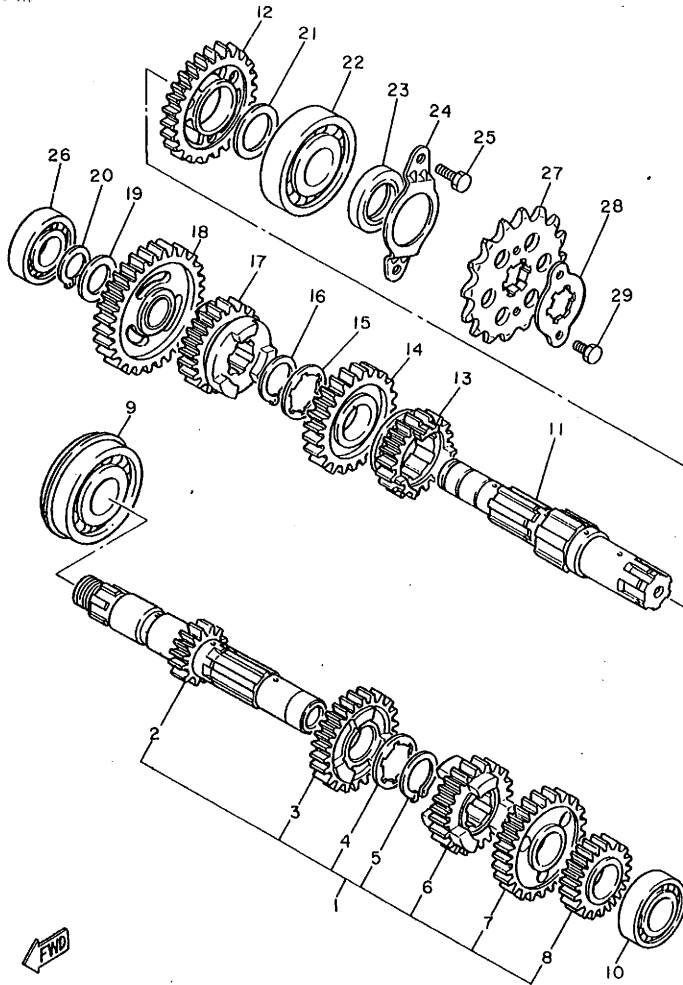
REF. NO.	PART NO.	DESCRIPTION	Q'TY	REMARKS
29	90201-17327	WASHER, Plate	1	
30	90508-14526	SPRING, torsion	1	
31	5Y1-16357-00	ROD, Push 2	1	
32	93515-32029	BALL	1	



34K100-3130

C7

FIG. 14 TRANSMISSION



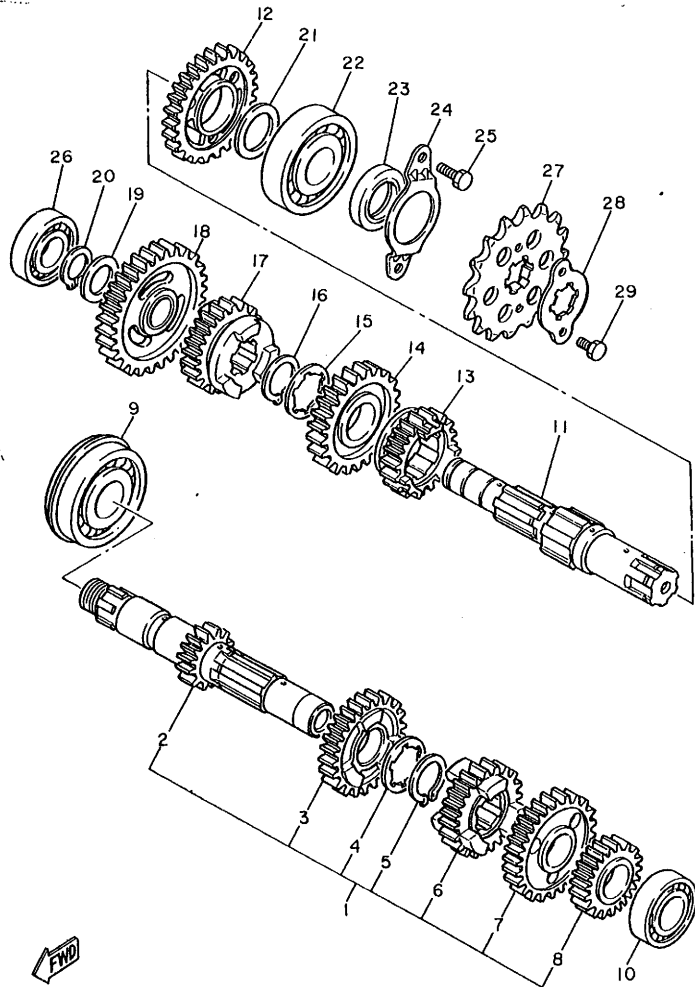
REF. NO.	PART NO.	DESCRIPTION	Q'TY	REMARKS
1	34L-17410-00	MAIN AXLE COMP.	1	
2	34L-17411-00	.AXLE, main(12T)	1	
3	5Y1-17141-00	.GEAR, 4th Pinion 22t	1	
4	90209-22191	.WASHER	1	
5	93440-25019	.CIRCLIP	1	
6	5Y1-17131-00	.GEAR, 3rd Pinion 20t	1	
7	5Y1-17151-01	.GEAR, 5th Pinion	1	
8	5Y1-17121-00	.GEAR, 2nd Pinion 17t	1	
9	93306-30540	BEARING	1	
10	93306-00431	BEARING	1	
11	5Y1-17402-00	DRIVE AXLE ASSY	1	
12	5Y1-17221-00	GEAR, 2nd wheel 27t	1	
13	5Y1-17251-00	GEAR, 5th wheel 21t	1	
14	5Y1-17231-00	GEAR, 3rd wheel 24t	1	
15	90209-22191	WASHER	1	
16	93440-25019	CIRCLIP	1	
17	5Y1-17241-01	GEAR, 4th wheel 21t	1	
18	34L-17211-00	GEAR, 1st wheel(31T)	1	
19	90201-20276	WASHER, Plate	1	
20	93410-20009	CIRCLIP	1	
21	117-15644-00	SHIM	1	
22	93306-30535	BEARING	1	
23	93102-25226	OIL SEAL	1	
24	5Y1-17471-00	PLATE, cover	1	
25	97321-06014	BOLT	2	
26	93306-00426	BEARING	1	
27	5Y1-17461-50	SPROCKET, drive (15T)	1	
28	3Y1-17456-00	HOLDER, sProcket	1	

END

5Y1110-3150

FIG. 14 TRANSMISSION

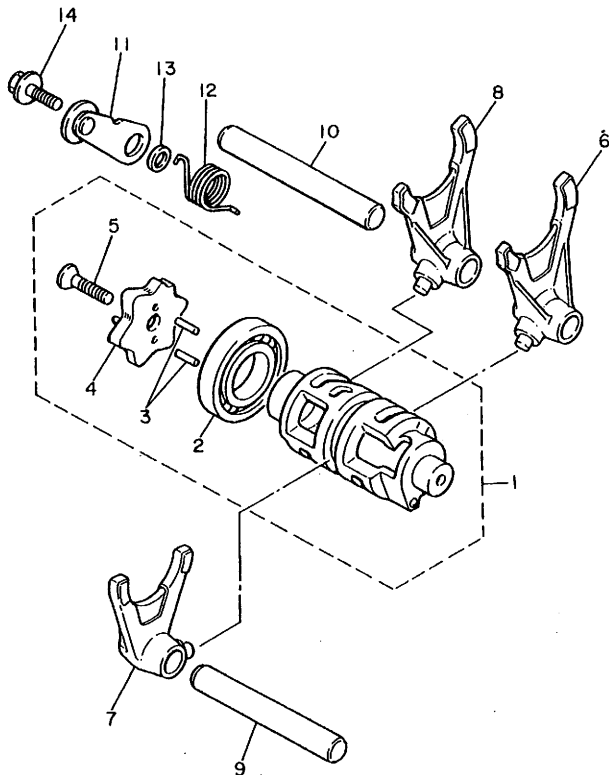
REF. NO.	PART NO.	DESCRIPTION	Q'TY	REMARKS
29	97322-06010	BOLT	2	



5Y1110-3150

C9

FIG. 15 SHIFT CAM. FORK



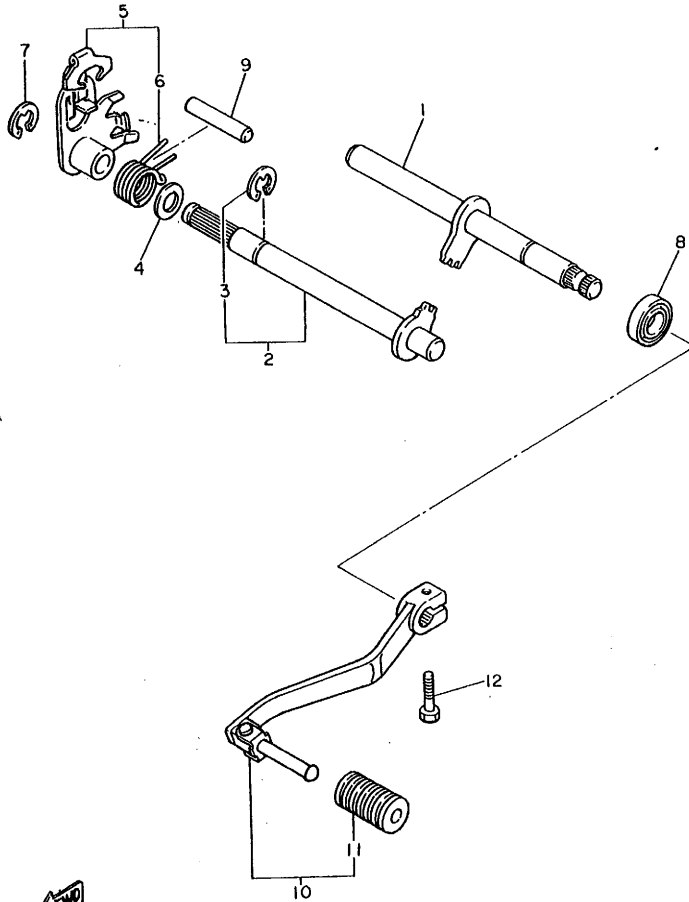
REF. NO.	PART NO.	DESCRIPTION	Q'TY	REMARKS
1	5Y1-18540-00	SHIFT CAM ASSY	1	
2	93316-00501	.BEARING, cylindrical	1	
3	93604-10011	.PIN, dowel	2	
4	5Y1-18185-00	.SEGMENT	1	
5	90151-06017	.SCREW, countersunk	1	
6	5Y1-18511-00	FORK, shift 1	1	
7	5Y1-18512-00	FORK, shift 2	1	
8	5Y1-18513-00	FORK, shift 3	1	
9	11H-18531-00	BAR, shift fork Guide 1	1	
10	5Y1-18535-00	BAR, shift fork Guide 2	1	
11	5Y1-18140-00	STOPPER LEVER ASSY	1	
12	90508-29527	SPRING, torsion	1	
13	90387-063F7	COLLAR	1	
14	90159-06016	SCREW, with washer	1	



5Y1110-2160

C10

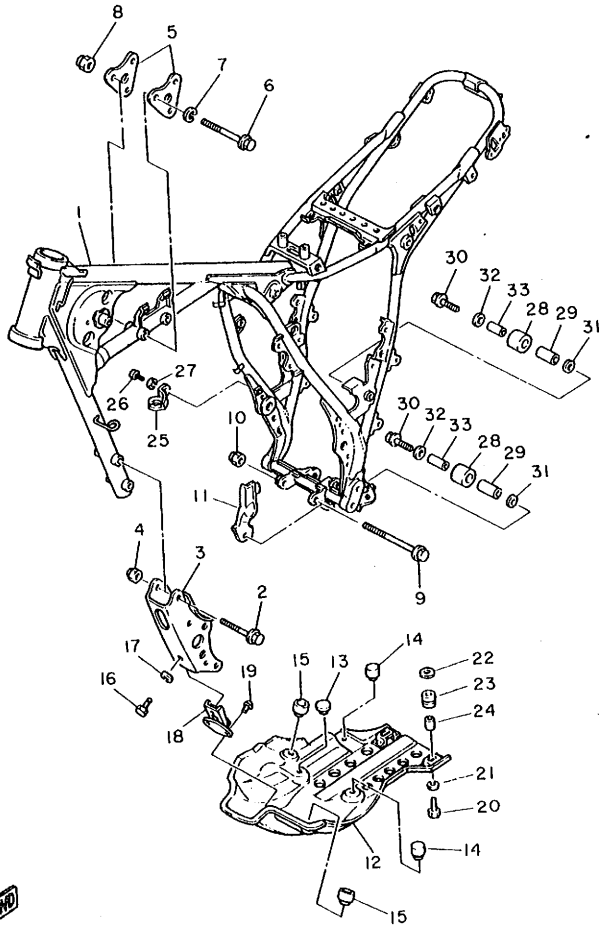
FIG. 16 SHIFT SHAFT



34L332-3160

REF. NO.	PART NO.	DESCRIPTION	Q'TY	REMARKS
1	5Y1-18102-00	SHIFT SHAFT ASSY 2	1	
2	5Y1-18101-00	SHIFT SHAFT ASSY	1	
3	93430-10016	.CIRCLIP	1	
4	90201-12474	WASHER, Plate	1	
5	5Y1-18120-01	SHIFT LEVER ASSY	1	
6	90508-29528	.SPRING, torsion	1	
7	93430-09035	CIRCLIP	1	
8	93102-12106	OIL SEAL	1	
9	93608-33046	PIN, dowel	1	
10	34L-18110-00	SHIFT PEDAL ASSY	1	
11	1W6-18113-00	.COVER, shift Pedal	1	
12	97326-06020	BOLT	1	

FIG. 17 FRAME

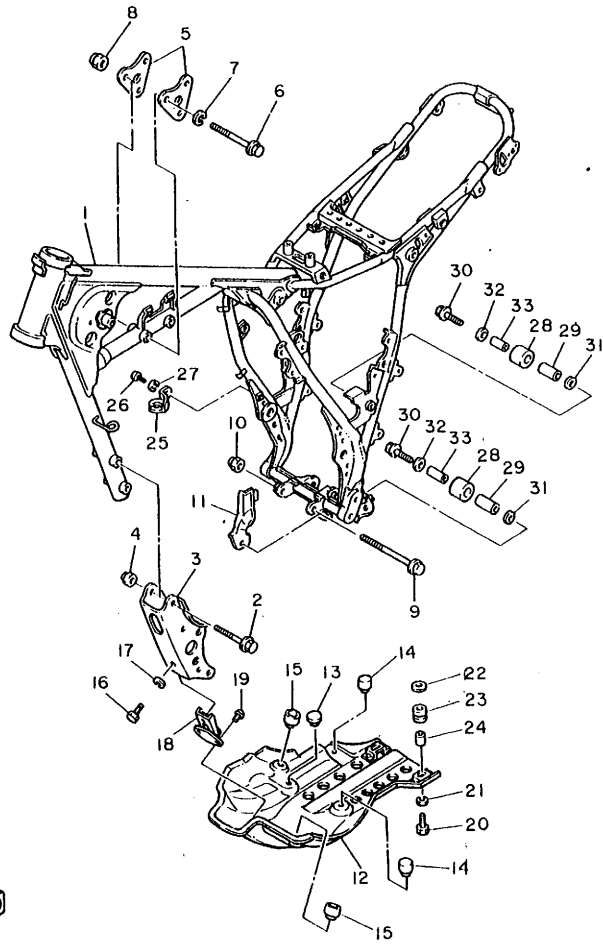


REF. NO.	PART NO.	DESCRIPTION	Q'TY	REMARKS
1	39E-21110-00-FH	FRAME COMP.	1	UR fire red
	39E-21110-00-33	FRAME COMP.	1	UR yamaha black
2	90105-10286	BOLT, washer based	4	
3	34L-21316-00-FH	STAY, engine 3	1	UR fire red
	34L-21316-00-33	STAY, engine 3	1	UR yamaha black
4	90185-10060	NUT, self-locking	4	
5	34L-21315-00	STAY, engine 2	2	
6	97311-10080	BOLT	3	
7	92901-10100	WASHER, spring	3	
8	90185-10060	NUT, self-locking	3	
9	95811-10100	BOLT, flange	1	
10	90185-10060	NUT, self-locking	1	
11	34L-2176E-01	PLATE	1	
12	34L-21471-00	PROTECTOR, engine	1	
13	2J5-21732-00	SEAL 1	1	
14	4N0-27114-00	STOPPER, main stand	2	
15	34L-21485-00	DAMPER, rubber 1	2	
16	97306-08016	BOLT	1	
17	92906-08100	WASHER, spring	1	
18	34L-21486-00	DAMPER 2	1	
19	90267-48079	RIVET, blind	2	
20	97306-06025	BOLT	2	
21	92906-06100	WASHER, spring	2	
22	90201-06765	WASHER, plate	2	
23	90480-14229	GROMMET	2	
24	90387-060A7	COLLAR	2	
25	5Y1-21441-00	BRACKET, stop switch	1	
26	92501-06012	SCREW, Pan head	1	



39E700-3170

FIG. 17 FRAME



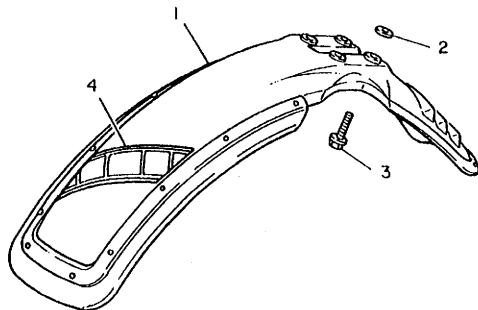
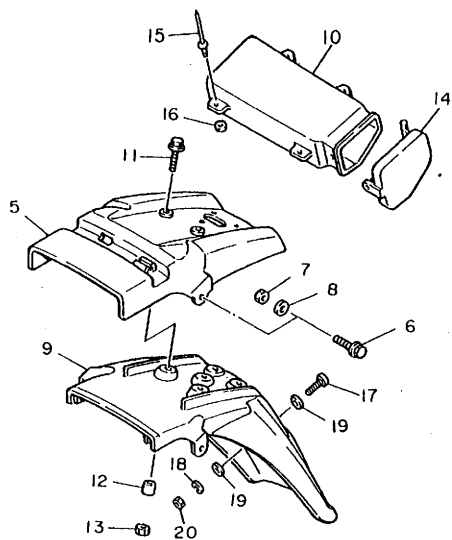
REF. NO.	PART NO.	DESCRIPTION	Q'TY	REMARKS
27	92901-06100	WASHER, sPrin8	1	
28	22W-22178-01	TENSIONER	2	
29	4V4-22184-00	BUSH	2	
30	90109-08705	BOLT	2	
31	90201-13409	WASHER, Plate	2	
32	90201-08113	WASHER, Plate	2	
33	90387-085E1	COLLAR	2	



39E700-3170

**C13**

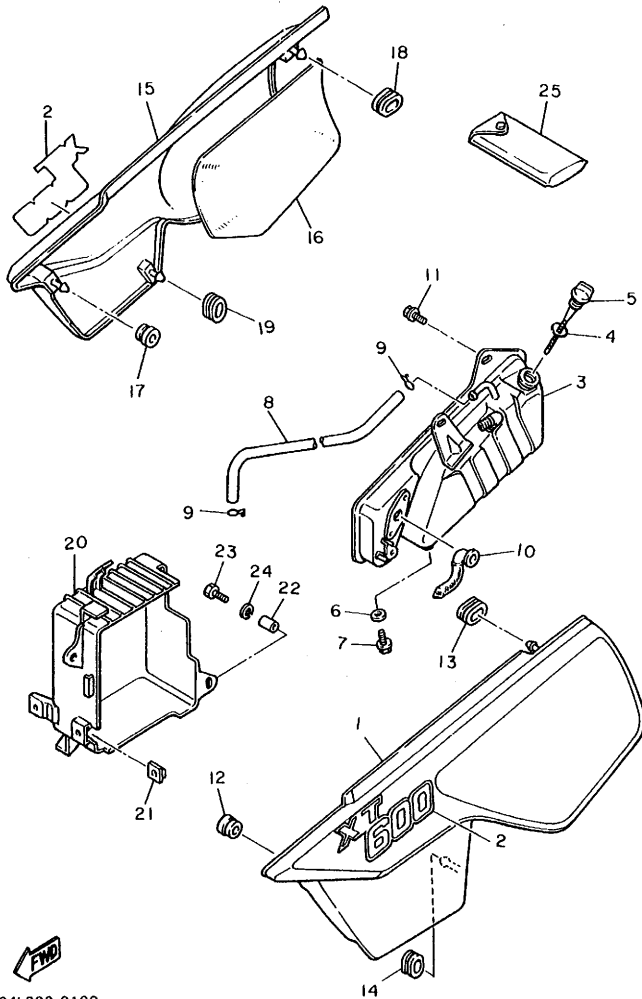
FIG. 18 FENDER



34L351-3180

REF. NO.	PART NO.	DESCRIPTION	Q'TY	REMARKS
1	34L-21510-20	FRONT FENDER COMP.	1	UR sky blue
	34L-21510-30	FRONT FENDER COMP.	1	UR clean white
2	90209-06187	WASHER	4	
3	90119-06063	BOLT, with washer	4	
4	34L-21575-00	SEAL 1	1	UR for syb
	34L-21575-10	SEAL 1	1	UR for w
5	34L-21611-00	FENDER, rear	1	UR sky blue
	34L-21611-20	FENDER, rear	1	UR clean white
6	95806-08030	BOLT, flange	2	
7	95302-08600	NUT	2	
8	90201-087F0	WASHER, Plate	2	
9	34L-21685-00	BRACKET, license	1	
10	34L-21170-00	BOX COMP.	1	
11	95806-06030	BOLT, flange	2	
12	90387-067F1	COLLAR	2	
13	95302-06600	NUT	2	
14	34L-28185-00	LID	1	
15	90267-32070	RIVET, blind	4	
16	92902-03200	WASHER	4	
17	92501-06020	SCREW, Pan head	1	
18	92902-06100	WASHER, sPring	1	
19	90201-06052	WASHER, Plate	2	
20	95302-06600	NUT	1	

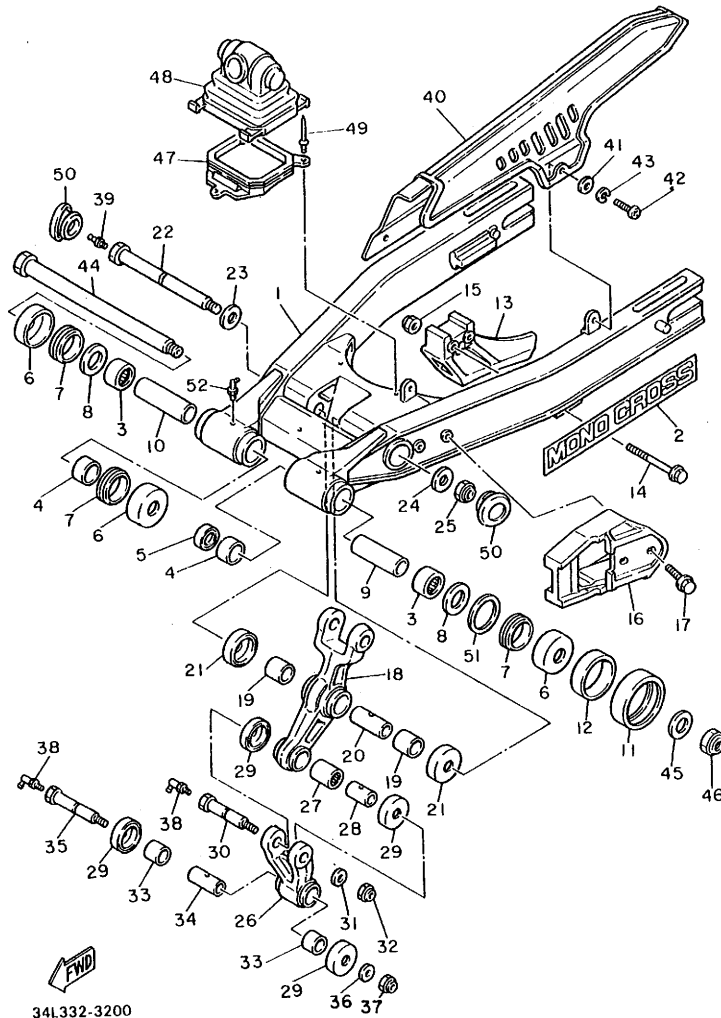
FIG. 19 SIDE COVER



REF. NO.	PART NO.	DESCRIPTION	Q'TY	REMARKS
1	34L-21711-00-1X	COVER, side 1	1	UR sky blue/competition yellow
	34L-21711-00-2X	COVER, side 1	1	UR white/low gloss black
2	34L-21781-00	EMBLEM 1	2	UR for syb
	34L-21781-10	EMBLEM 1	2	UR for w
3	34L-21750-00	OIL TANK ASSY	1	
4	93210-21190	O-RING	1	
5	34L-21761-01	GAUGE, level	1	
6	90430-08119	GASKET	1	
7	95801-08012	BOLT, flange	1	
8	90445-11753	HOSE	1	
9	90467-10008	CLIP	2	
10	34L-21756-00	NET, filter	1	
11	95802-08012	BOLT, flange	3	
12	90480-13197	GROMMET	1	
13	90480-01141	GROMMET	1	
14	90480-01385	GROMMET	1	
15	34L-21721-00-1X	COVER, side 2	1	UR sky blue/competition yellow
	34L-21721-00-2X	COVER, side 2	1	UR white/low gloss black
16	34L-2174A-00	INSULATOR, side cover	1	
17	90480-13197	GROMMET	1	
18	90480-01141	GROMMET	1	
19	90480-01321	GROMMET	1	
20	34L-2177G-00	BOX, battery	1	
21	4H7-14484-00	PLATE, cleaner case fitting	2	
22	90387-06500	COLLAR	2	
23	97301-06016	BOLT	2	
24	92901-06100	WASHER, spring	2	
25	34L-28100-00	TOOL KIT	1	

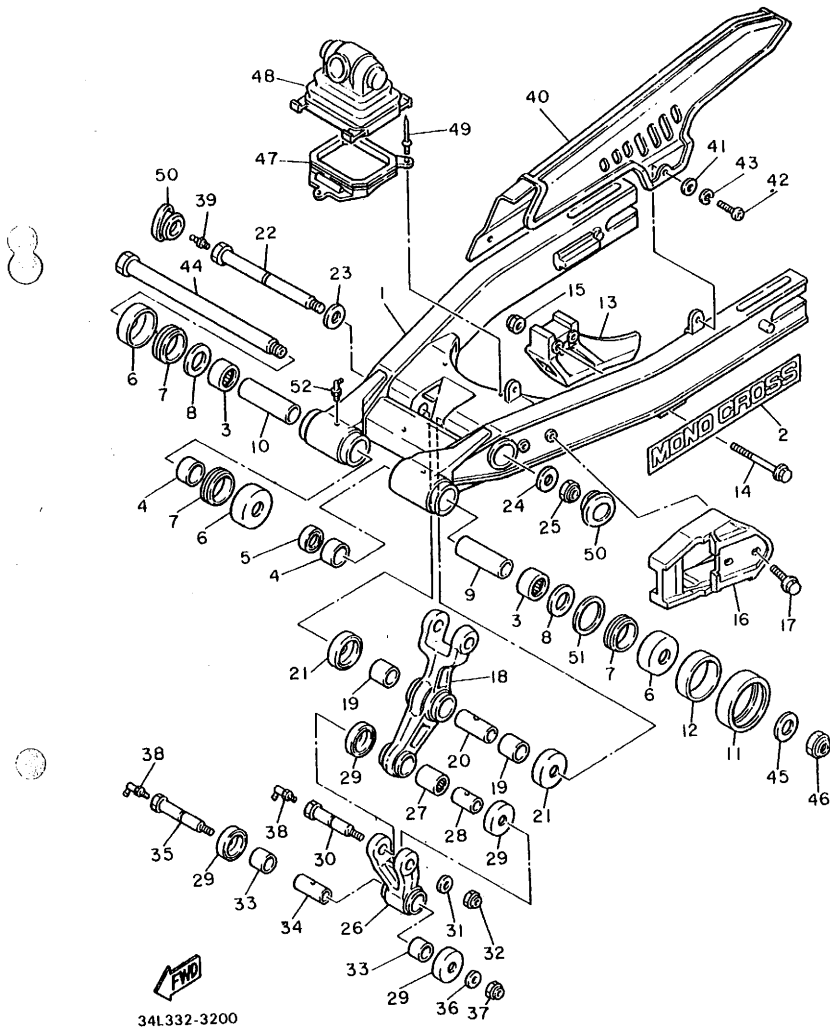
34L332-3190

FIG. 20 REAR ARM



REF. NO.	PART NO.	DESCRIPTION	Q'TY	REMARKS
1	34L-22110-01	REAR ARM COMP.	1	
2	34L-2218A-00	EMBLEM, rear arm	1	UR for syb
	34L-2218A-10	EMBLEM, rear arm	1	UR for w
3	93317-32231	BEARING, cylindrical	2	
4	90380-22111	BUSH, solid	2	
5	93106-22019	OIL SEAL	1	
6	2K6-22128-01	COVER, thrust 1	3	
7	93108-35004	OIL SEAL	3	
8	90201-244A8	WASHER, Plate (1.95T)	2	
9	34L-22123-00	BUSH 1	1	
10	34L-22124-00	BUSH 2	1	
11	5X6-22151-10	SEAL, Guard	1	
12	90387-440G3	COLLAR	1	
13	34L-22153-00	GUARD, chain	1	
14	95801-06050	BOLT, flange	2	
15	95701-06100	NUT, flange	2	
16	34L-22147-00	PROTECTOR, chain	1	
17	90119-06101	BOLT, with washer	2	
18	34L-2217A-00	ARM, relay	1	
19	90386-20120	BUSH	2	
20	90380-14095	BUSH, solid	1	
21	34L-22128-00	COVER, thrust 1	2	
22	90109-120A3	BOLT	1	
23	90201-140G9	WASHER, Plate	1	
24	90201-120A5	WASHER, Plate	1	
25	90185-12119	NUT, self-locking	1	
26	34L-2217F-00	ROD, connecting 1	1	
27	93315-31732	BEARING, cylindrical	1	

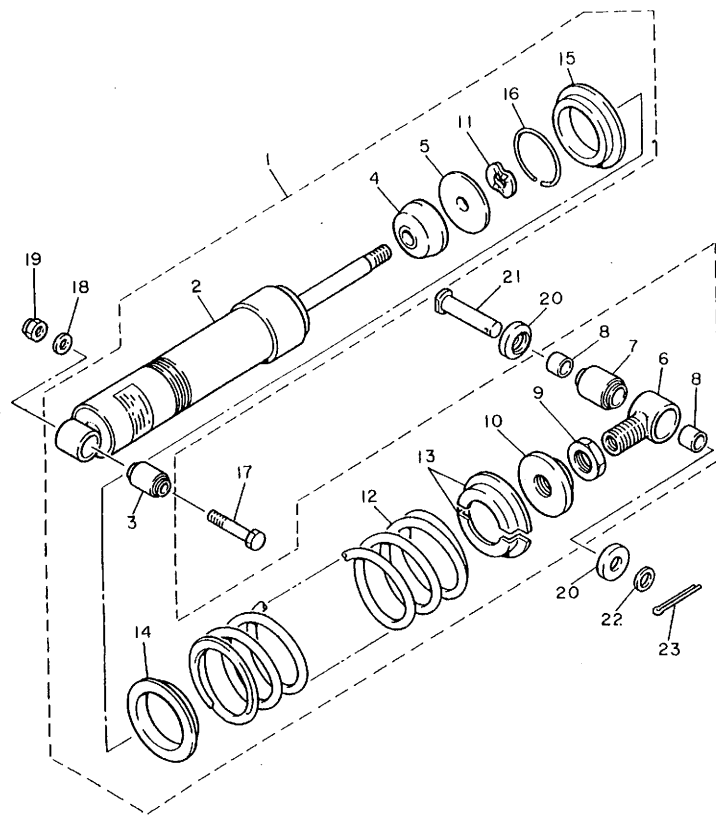
FIG. 20 REAR ARM



REF. NO.	PART NO.	DESCRIPTION	Q'TY	REMARKS
28	90387-121H1	COLLAR	1	
29	23X-22129-00	COVER, thrust 2	4	
30	90109-10759	BOLT	1	
31	90201-100E9	WASHER, Plate	1	
32	90185-10120	NUT, self-locking	1	
33	90386-20123	BUSH	2	
34	90387-122J6	COLLAR	1	
35	90109-10760	BOLT	1	
36	90201-10430	WASHER, Plate	1	
37	90185-10120	NUT, self-locking	1	
38	93700-06005	NIPPLE, Grease	2	
39	93700-06004	NIPPLE, Grease	1	
40	34L-22311-00	CASE, chain	1	
41	90201-062A8	WASHER, Plate	2	
42	92506-06012	SCREW, Pan head	2	
43	92906-06100	WASHER, Spring	2	
44	3R4-22141-00	SHAFT, Pivot	1	
45	92901-16200	WASHER, Plain	1	
46	90185-16103	NUT, self-locking	1	
47	34L-2216G-00	SUPPORT, boot	1	
48	34L-22189-00	BOOT, rubber	1	
49	90267-32072	RIVET, blind	3	
50	34L-22117-00	CAP	2	
51	90201-251F6	WASHER, Plate	1	UN
52	93700-06005	NIPPLE, Grease	2	

D3

FIG. 21 REAR SUSPENSION



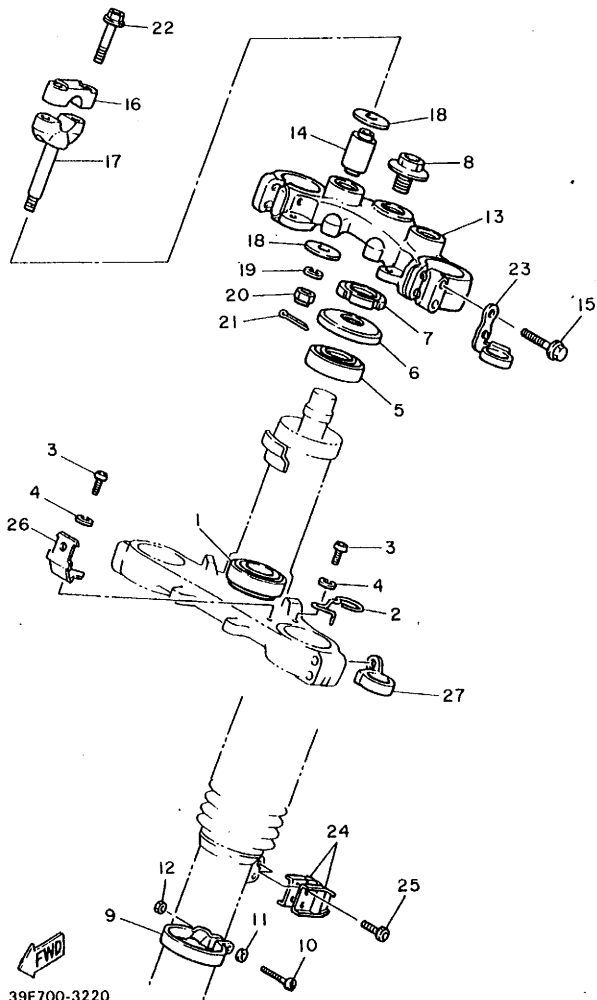
REF. NO.	PART NO.	DESCRIPTION	Q'TY	REMARKS
1	34L-22210-00-6W	SHOCK ABSORBER ASSY, rear	1	UR native red
	34L-22210-00-26	SHOCK ABSORBER ASSY, rear	1	UR competition yellow
2	34L-22401-00	•DAMPER SUB ASSY	1	
3	34L-22216-00	•BUSH, rear shock absorber	1	
4	34K-22493-00	•BUMP, stop	1	
5	30X-22228-00	•SUPPORT, bump stop	1	
6	34L-22409-00	•UPPER BRACKET SUB ASSY	1	
7	34L-22226-00	•BUSH, shock absorber lower	1	
8	90380-14130	•BUSH, solid	2	
9	90170-20213	•NUT	1	
10	30X-22213-00	•SEAT, spring upper	1	
11	90206-14067	•WASHER, wave	1	
12	34L-22212-00-6W	•SPRING	1	UR native red
	34L-22212-00-26	•SPRING	1	UR competition yellow
13	30X-22214-00	•GUIDE, spring 1	2	
14	4X7-22224-00	•GUIDE, spring 2	1	
15	3Y1-22223-00	•SEAT, spring lower	1	
16	93440-48079	•CIRCLIP	1	
17	90101-12498	BOLT	1	
18	90201-12362	WASHER, Plate	1	
19	90185-12080	NUT, self-locking	1	
20	34L-22129-00	COVER, thrust 2	2	
21	90240-14106	PIN, clevis	1	
22	92901-14600	WASHER	1	
23	91401-30025	PIN, cotter	1	



34L332-3210

D4

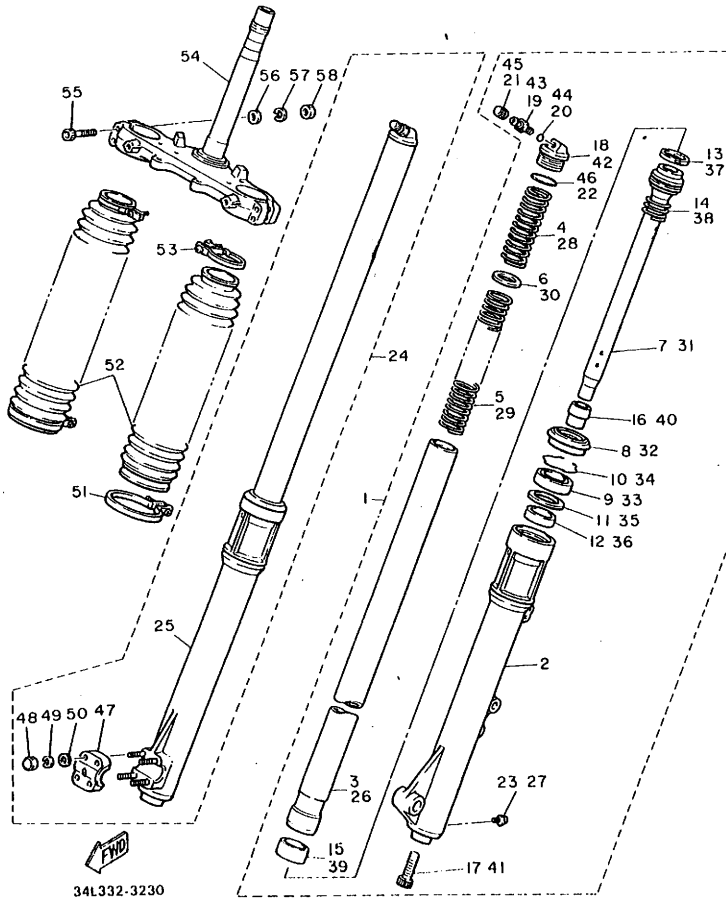
FIG. 22 STEERING



39E700-3220

REF. NO.	PART NO.	DESCRIPTION	Q'TY	REMARKS
1	93332-00008	BEARING	1	
2	3Y1-2331E-00	GUIDE, cable	1	
3	92501-06012	SCREW, Pan head	2	
4	92901-06100	WASHER, sPring	2	
5	93332-00023	BEARING	1	
6	1W1-23416-00	COVER, ball race 2	1	
7	90179-25033	NUT	1	
8	90105-14102	BOLT, washer based	1	
9	34L-23318-00	HOLDER, cable 1	1	
10	98501-05018	SCREW, Pan head	1	
11	92901-05600	WASHER, Plate	1	
12	95301-05600	NUT	1	
13	34L-23435-00-98	CROWN, handle	1	low gloss black
14	3Y6-23434-00	HOLDER, damPer	2	
15	95826-08040	BOLT, flange	4	
16	1E6-23441-00	HOLDER, handle upper	2	
17	3Y6-23442-00-98	HOLDER, handle lower	2	low gloss black
18	90201-10141	WASHER, Plate	4	
19	92901-10100	WASHER, sPring	2	
20	95301-10700	NUT	2	
21	90468-12006	CLIP	2	
22	95826-08035	BOLT, flange	4	
23	34L-23389-00	GUIDE, cable	1	
24	90465-14242	CLAMP	2	
25	91316-06012	BOLT	2	
26	34L-2317E-00	STAY	1	
27	34L-2331E-00	GUIDE, cable	1	

FIG. 23 FRONT FORK

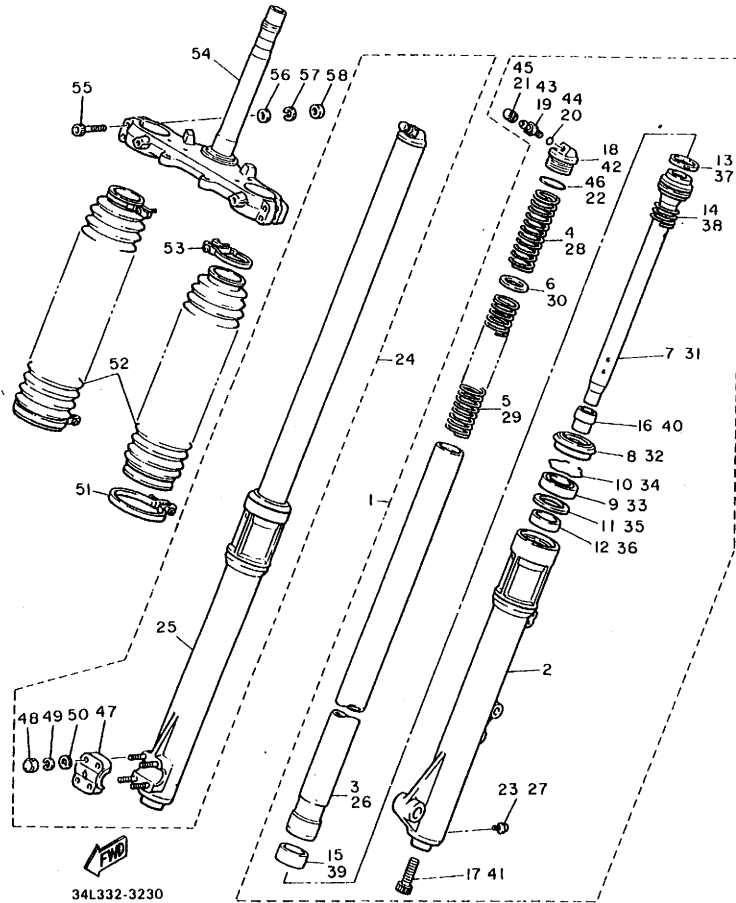


34L332-3230

REF. NO.	PART NO.	DESCRIPTION	Q'TY	REMARKS
1	34L-W2313-00	FRONT FORK ASSY (L.H.)	1	
2	34L-23130-00-38	.FORK UNIT ASSY	1	clear buffing
3	34L-23110-00	.INNER TUBE COMP.1	1	
4	34L-23351-00	.SPRING	1	
5	34L-23141-00	.SPRING, front fork	1	
6	34L-23142-00	.SEAT, sPring uPPer	1	
7	34L-23170-00	.CYLINDER COMP., front fork	1	
8	34L-23144-00	.SEAL, dust	1	
9	34L-23145-00	.OIL SEAL	1	
10	34L-23153-00	.RING, snap	1	
11	34L-23147-00	.O-RING	1	
12	34L-23135-00	.METAL, slide 2	1	
13	34L-23157-00	.RING, Piston	1	
14	34L-23151-00	.SPRING, rebound	1	
15	34L-23171-00	.PISTON, front fork	1	
16	34L-23166-00	.SPACER, oil lock	1	
17	3M7-23181-00	.BOLT, hexagon socket head	1	
18	34L-23111-00	.BOLT, cap	1	
19	5K7-23190-00	.AIR VALVE COMP.	1	
20	3H3-23147-00	.O-RING	1	
21	34L-23190-00	.AIR VALVE COMP.	1	
22	34L-23114-00	.GASKET	1	
23	1E7-23119-00	.PLUG, drain	1	
24	34L-W2314-00	FRONT FORK ASSY (R.H.)	1	
25	34L-23140-00-38	.FORK UNIT ASSY 2	1	clear buffing
26	34L-23110-00	.INNER TUBE COMP.1	1	
27	1E7-23119-00	.PLUG, drain	1	
28	34L-23351-00	.SPRING	1	

D6

FIG. 23 FRONT FORK

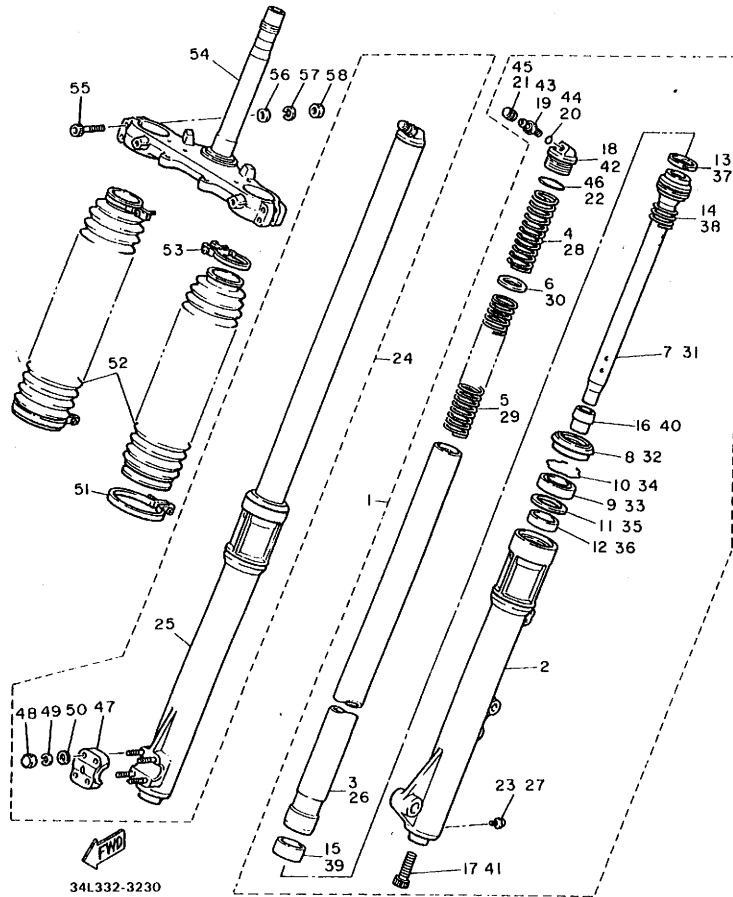


REF. NO.	PART NO.	DESCRIPTION	Q'TY	REMARKS
29	34L-23141-00	•SPRING, front fork	1	
30	34L-23142-00	•SEAT, sPrinG upper	1	
31	34L-23170-00	•CYLINDER COMP., front fork	1	
32	34L-23144-00	•SEAL, dust	1	
33	34L-23145-00	•OIL SEAL	1	
34	34L-23153-00	•RING, snap	1	
35	34L-23147-00	•O-RING	1	
36	34L-23135-00	•METAL, slide 2	1	
37	34L-23157-00	•RING, Piston	1	
38	34L-23151-00	•SPRING, rebound	1	
39	34L-23171-00	•PISTON, front fork	1	
40	34L-23166-00	•SPACER, oil lock	1	
41	3M7-23181-00	•BOLT, hexaGon socket head	1	
42	34L-23111-00	•BOLT, caP	1	
43	5K7-23190-00	•AIR VALVE COMP.	1	
44	3H3-23147-00	•O-RING	1	
45	34L-23190-00	•AIR VALVE COMP.	1	
46	34L-23114-00	•GASKET	1	
47	34L-23167-00	•HOLDER, axle	1	
48	95301-06600	•NUT	4	
49	92901-06100	•WASHER, sPrinG	4	
50	92901-06200	•WASHER, Plain	4	
51	34L-23489-00	BAND	2	
52	34L-23191-00	BOOT	2	UR comPetition yellow
	34L-23191-10	BOOT	2	UR chappy red
53	34L-23192-00	BAND	2	
54	39E-23340-00-39	UNDER BRACKET COMP.	1	clear no buffing
55	34L-23181-00	BOLT, hexaGon socket head	4	

D7

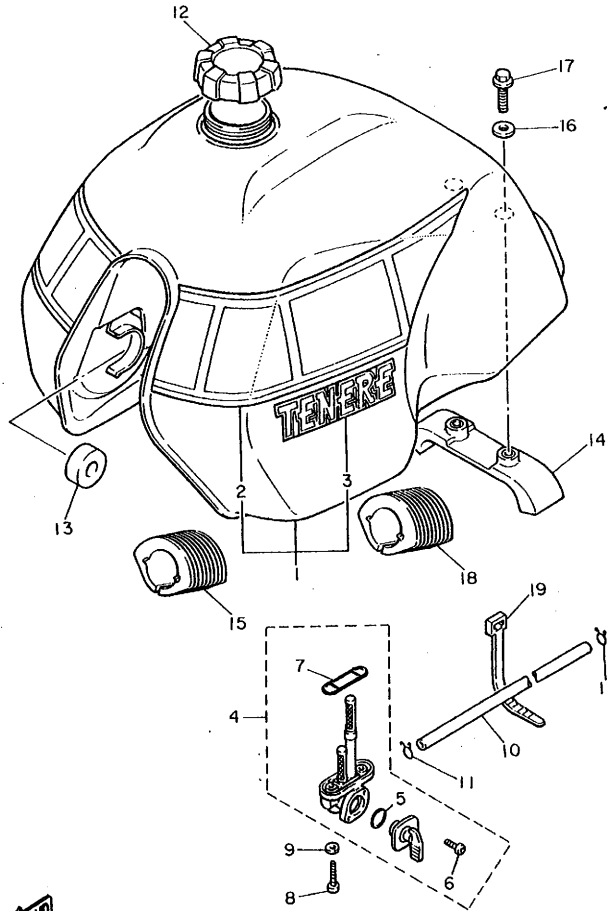
FIG. 23 FRONT FORK

REF. NO.	PART NO.	DESCRIPTION	Q'TY	REMARKS
56	92901-08600	WASHER, Plate	2	
57	92901-08100	WASHER, sPring	4	
58	95311-08600	NUT	4	



D8

FIG. 24 FUEL TANK

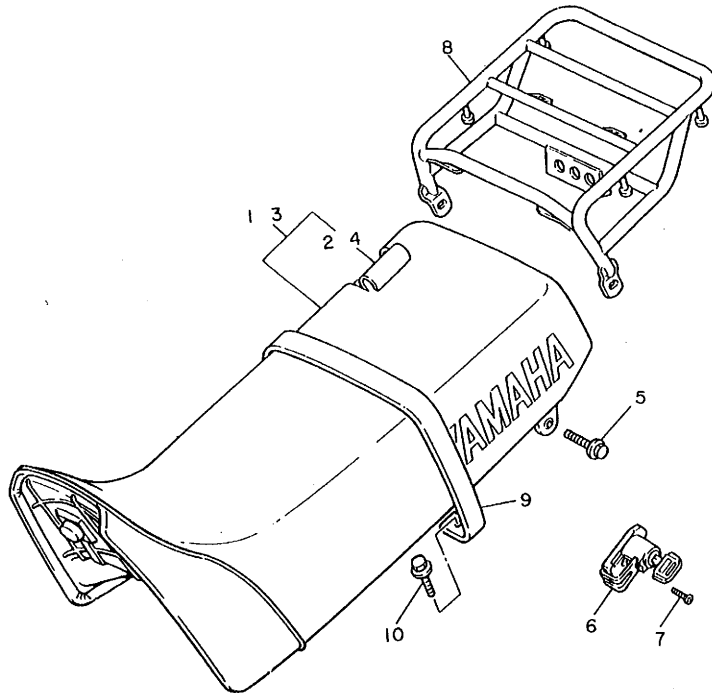


REF. NO.	PART NO.	DESCRIPTION	Q'TY	REMARKS
1	34L-24110-00-01	FUEL TANK COMP.	1	UR sky blue
	34L-24110-00-02	FUEL TANK COMP.	1	UR clean white
2	34L-24240-00	.GRAPHIC SET	1	UR for syb
	34L-24240-10	.GRAPHIC SET	1	UR for w
3	34L-24161-00	.EMBLEM 1	2	UR for syb
	34L-24161-10	.EMBLEM 1	2	UR for w
4	34L-24500-00	FUEL COCK ASSY 1	1	
5	4X8-24533-00	.SEAL, cock	1	
6	98501-03008	.SCREW, Pan head	2	
7	4X8-24512-00	.GASKET	1	
8	90149-06011	SCREW	2	
9	90202-06010	WASHER, Plate	2	
10	34L-24311-00	PIPE, fuel 1	1	
11	90467-09006	CLIP	2	
12	34L-24610-00	CAP ASSY	1	
13	156-24181-00	DAMPER, locating 1	2	
14	34L-24182-00	DAMPER, locating 2	1	
15	34L-24183-00	DAMPER, locating 3	2	
16	90201-060H4	WASHER, Plate	2	
17	95801-06012	BOLT, flange	2	
18	34L-24184-00	DAMPER, locating 4	2	
19	12R-82591-00	BAND	2	

FWD  
34L332-3240

D9

FIG. 25 SEAT



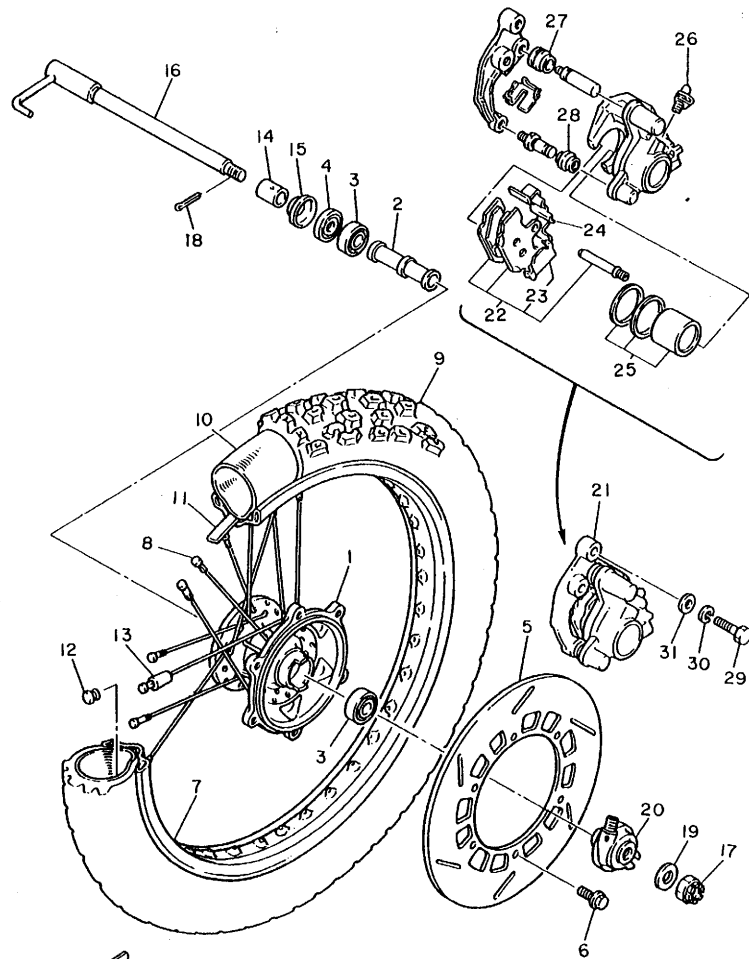
REF. NO.	PART NO.	DESCRIPTION	Q'TY	REMARKS
1	34L-24770-00	SEMI-DOUBLE SEAT ASSY	1	UR black
2	34L-24731-00	.COVER, seat	1	
3	34L-24770-10	SEMI-DOUBLE SEAT ASSY	1	UR black/chappy red
4	34L-24731-10	.COVER, seat	1	
5	95806-06016	BOLT, flange	2	
6	5H0-21308-00	HELMET HANGER ASSY	1	
7	92701-06015	SCREW, flat head	1	
8	34L-24830-00-98	SUB CARRIER ASSY	1	low gloss black
9	34L-24734-00	BAND, seat	1	
10	90119-06056	BOLT, with washer	2	



34L351-3250

D10

FIG. 26 FRONT WHEEL



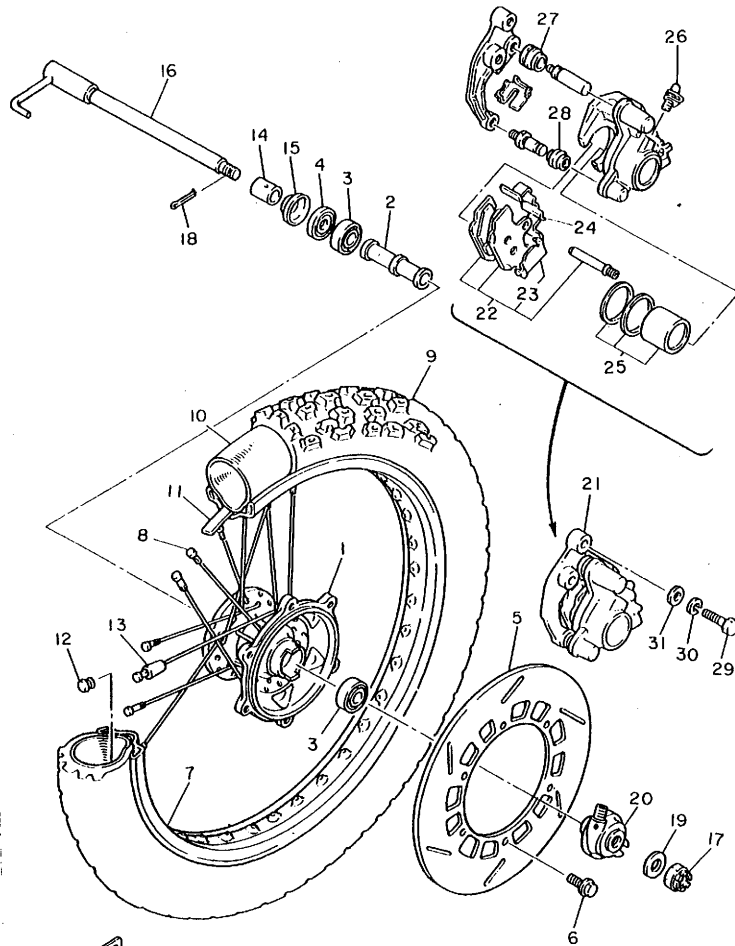
34L351-3260

REF. NO.	PART NO.	DESCRIPTION	Q'TY	REMARKS .
1	34L-25111-00-98	HUB, front	1	low gloss black
2	90560-15240	SPACER	1	
3	93306-20205	BEARING (B6202)	2	
4	93102-20281	OIL SEAL	1	
5	34L-25831-00	DISC, brake (RIGHT)	1	
6	90109-06757	BOLT	6	
7	94416-21367	RIM (1.60-21)	1	
8	34L-25104-00	SPOKE SET, front	1	
9	94130-211E8	TIRE (3.00-21)	1	dunlop
10	94227-21101	TUBE (2.75-21)	1	dunlop
11	94327-21071	BAND, rim (2.75-21)	1	dunlop
12	90480-10068	GROMMET	1	
13	156-25398-00	BALANCER, wheel	1	
14	90387-152J3	COLLAR	1	
15	322-25118-00	COVER, hub dust	1	
16	34L-25181-00	AXLE, wheel	1	
17	90171-14020	NUT, castle	1	
18	91401-30030	PIN, cotter	1	
19	90201-15785	WASHER, Plate	1	
20	34L-25190-00	GEAR UNIT ASSY	1	
21	34L-25810-10	CALIPER ASSY (LEFT)	1	
22	34L-W0045-10	.BRAKE PAD KIT, front	1	
23	11U-25827-10	.SHIM, caliPer	1	
24	34L-25919-00	.SUPPORT, Pad	1	
25	4X8-W0057-00	.PISTON ASSY, caliPer	1	
26	404-W0048-30	.BREED SCREW KIT	1	
27	4X8-25917-00	.BOOT, caliPer	1	
28	5R2-25937-00	.BOOT 2	1	

D11

FIG. 26 FRONT WHEEL

REF. NO.	PART NO.	DESCRIPTION	Q'TY	REMARKS
29	90101-10308	BOLT	2	
30	92901-10100	WASHER, sPring	2	
31	92901-10200	WASHER, Plain	2	

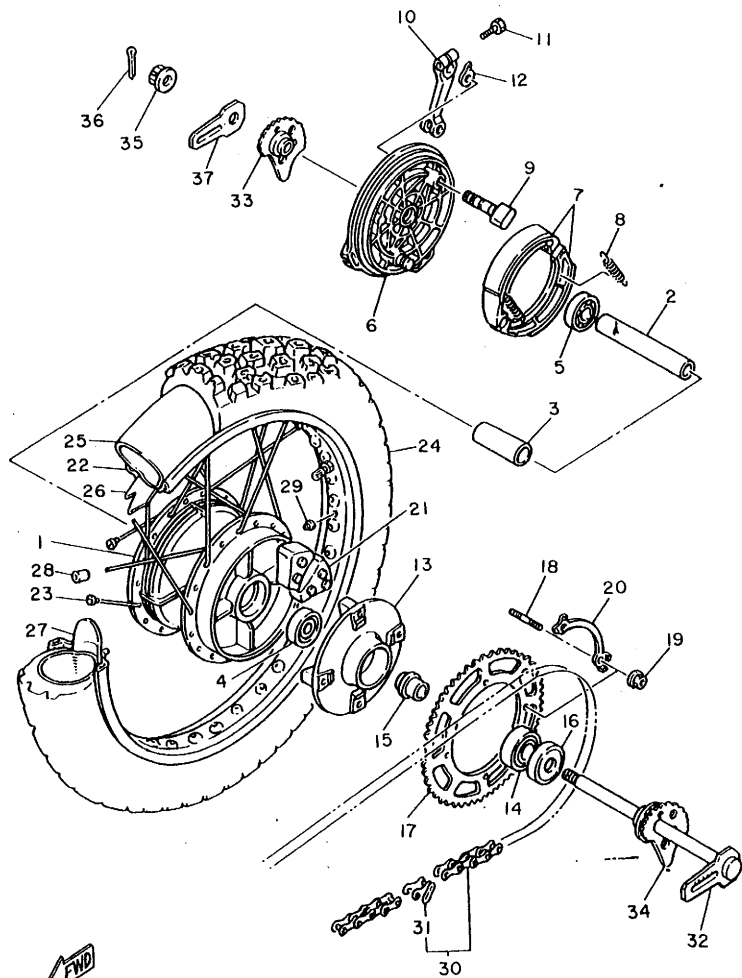


← FWD

34L351-3260

D12

FIG. 27 REAR WHEEL

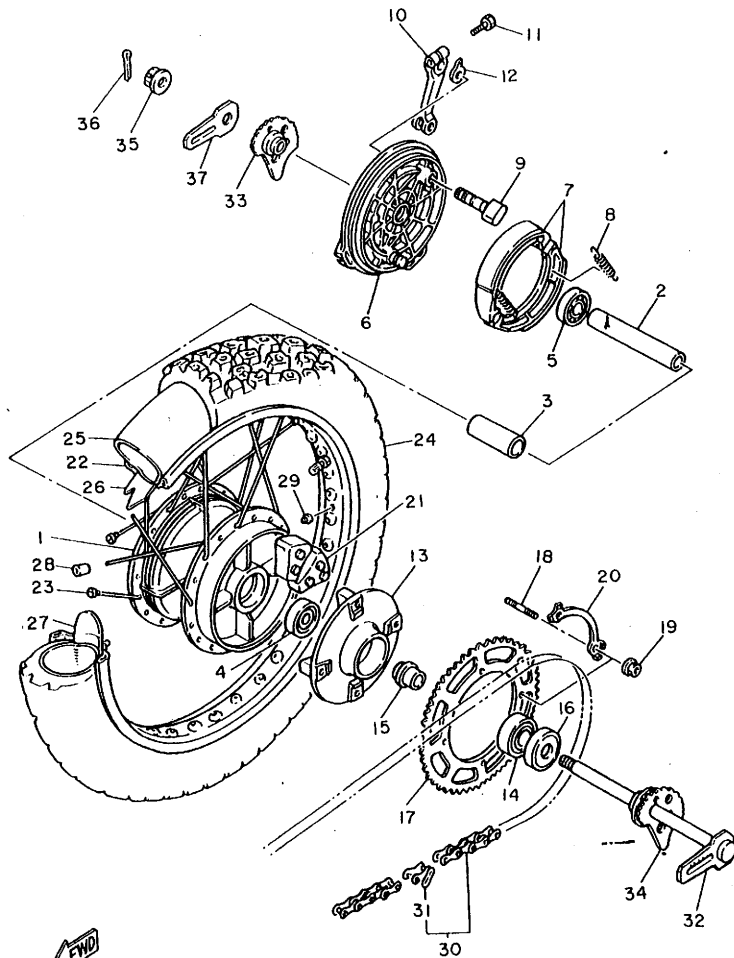


REF. NO.	PART NO.	DESCRIPTION	Q'TY	REMARKS
1	5Y1-25311-00-98	HUB, rear	1	low gloss black
2	5X4-25317-00	SPACER, bearing	1	
3	146-25315-00	FLANGE, spacer	1	
4	93306-20316	BEARING (B6203)	1	
5	93306-20310	BEARING (B6203RS)	1	
6	34L-25321-00-98	PLATE, brake shoe	1	low gloss black
7	5Y1-25330-00	BRAKE SHOE COMP.	2	
8	90507-20002	SPRING, tension	2	
9	5Y1-25151-00	CAMSHAFT	1	
10	34L-25355-00	LEVER, camshaft	1	
11	90101-06291	BOLT	1	
12	4G0-2533A-00	PLATE, indicator	1	
13	5Y1-25366-00-98	CLUTCH, hub	1	
14	93306-30423	BEARING	1	
15	5Y1-25377-00	COLLAR, wheel	1	
16	93102-30072	OIL SEAL	1	
17	5Y1-25439-20	SPROCKET, driven (39T)	1	
18	90116-10348	BOLT, stud	4	
19	90170-10219	NUT	4	
20	5Y1-25412-00	WASHER (12T)	2	
21	5Y1-25364-00	DAMPER	4	
22	94425-18371	RIM (2.50-18)	1	
23	34L-25304-00	SPOKE SET, rear	1	dunlop
24	94146-181E9	TIRE (4.60-18)	1	dunlop
25	94240-18098	TUBE (4.00-18)	1	dunlop
26	94340-18069	BAND, rim (4.00-18)	1	
27	2X5-25394-00	SPACER, bead	1	
28	156-25398-00	BALANCER, wheel	1	

34L351-3270

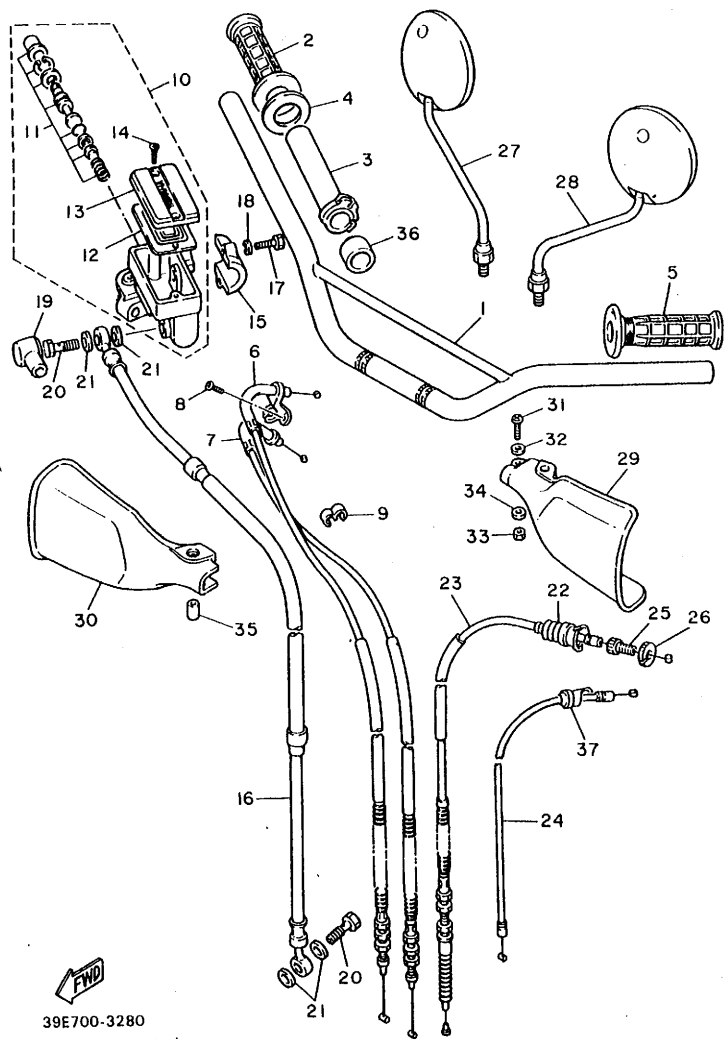
FIG. 27 REAR WHEEL

REF. NO.	PART NO.	DESCRIPTION	Q'TY	REMARKS
29	90480-10068	GROMMET	1	
30	94580-50102	CHAIN	1	
31	94680-40011	JOINT, chain	1	
32	34L-25381-01	AXLE, wheel	1	
33	34L-25389-00	PULLER, chain 2	1	
34	34L-25388-00	PULLER, chain 1	1	
35	90171-16024	NUT, castle	1	
36	91401-30030	PIN, cotter	1	
37	34L-2533E-01	PLATE, indicator 2	1	



← FWD  
34L351-3270

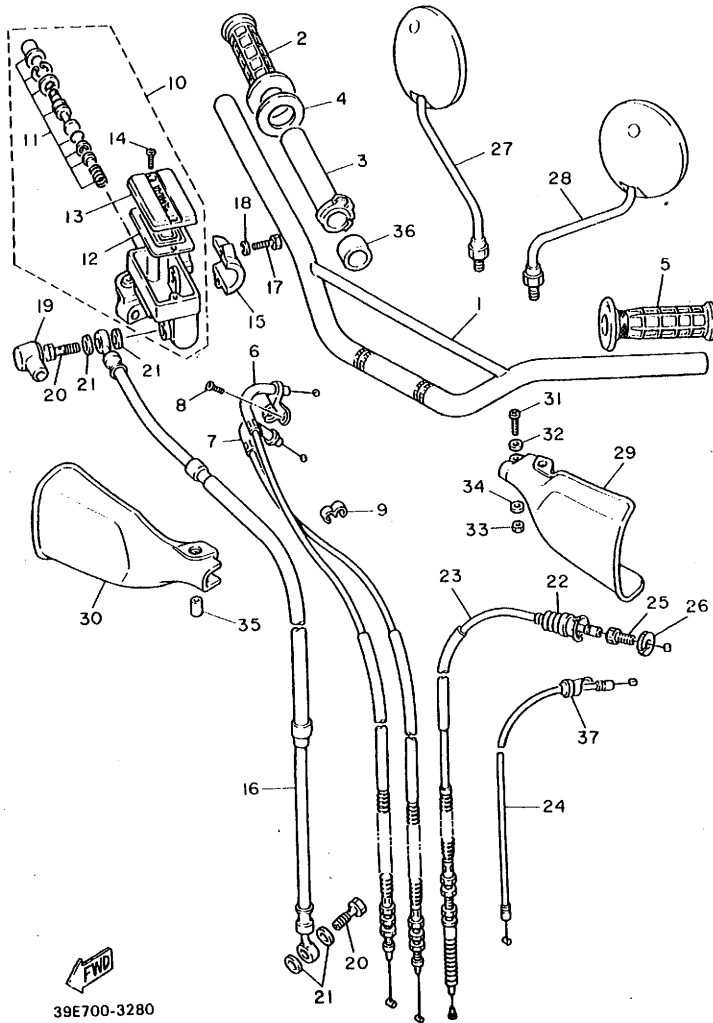
FIG. 28 STEERING HANDLE. CABLE



REF. NO.	PART NO.	DESCRIPTION	Q'TY	REMARKS
1	34L-26111-00	HANDLEBAR	1	
2	33G-26242-00	GRIP (R.H)	1	
3	3Y1-26243-00	TUBE, throttle Guide	1	
4	3Y1-26249-00	RING, leaf	1	
5	33G-26241-00	GRIP (L.H)	1	
6	34L-26311-00	CABLE, throttle 1	1	
7	34L-26312-00	CABLE, throttle 2	1	
8	98506-05008	SCREW, Pan head	1	
9	90468-15009	CLIP	1	
10	4L0-25850-02	MASTER CYLINDER ASSY	1	
11	4L0-W0041-00	.CYLINDER KIT, master	1	
12	4L0-25854-00	.DIAPHRAGM, reservoir	1	
13	4L0-25852-00	.CAP, reservoir	1	
14	98706-04012	.SCREW, flat head	2	
15	4L0-25867-00	BRACKET, master cylinder.	1	
16	39E-25872-00	HOSE, brake 1	1	
17	97326-06025	BOLT	2	
18	92906-06100	WASHER, spring	2	
19	4L0-25862-00	BOOT, master cylinder	1	
20	90401-10034	BOLT, union	2	
21	90201-10118	WASHER, Plate	4	
22	1E6-26342-00	BOOT, cable	1	
23	34L-26335-00	CABLE, clutch	1	
24	34L-26331-00	CABLE, starter 1	1	
25	90123-08046	BOLT	1	
26	90179-08148	NUT	1	
27	1Y1-26290-40	BACK MIRROR ASSY (R.H)	1	
28	5Y4-26290-30	BACK MIRROR ASSY (L.H)	1	

39E700-3280

FIG. 28 STEERING HANDLE. CABLE

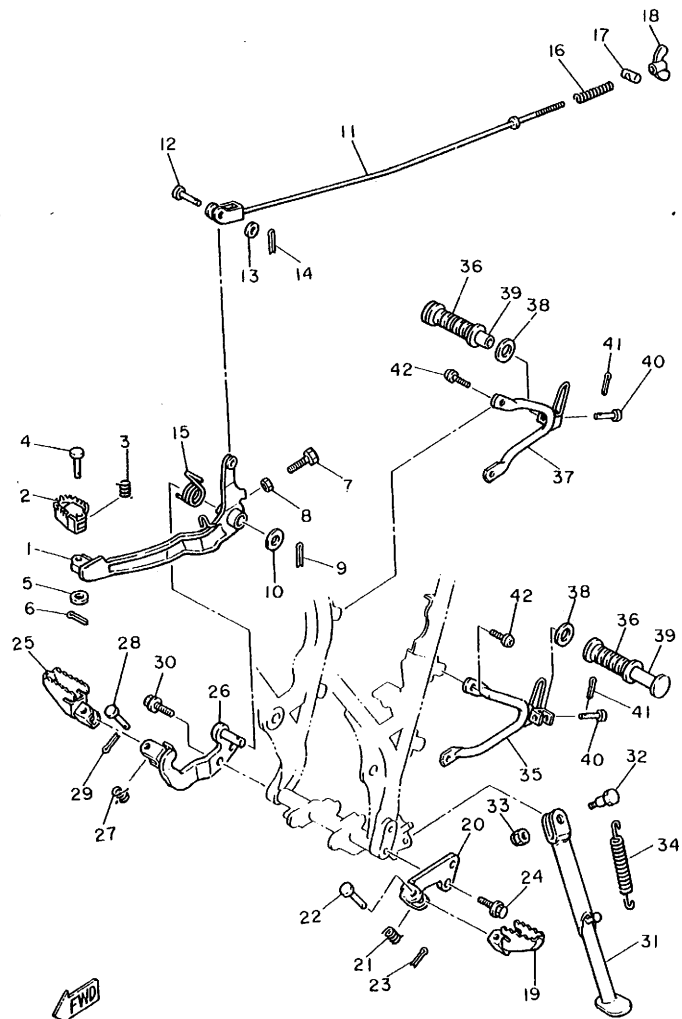


39E700-3280

REF. NO.	PART NO.	DESCRIPTION	Q'TY	REMARKS.
29	34L-26141-10	GUARD, brush 1	1	UR white
	34L-26141-00	GUARD, brush 1	1	UR sky blue
30	34L-26142-00	GUARD, brush 2	1	UR sky blue
	34L-26142-10	GUARD, brush 2	1	UR clean white
31	92501-06020	SCREW, Pan head	1	
32	92901-06600	WASHER, Plate	1	
33	95301-06700	NUT	1	
34	92901-06200	WASHER, Plain	1	
35	90387-06500	COLLAR	1	
36	90387-22660	COLLAR	1	
37	5Y1-26339-00	BOOT	1	

E2

FIG. 29 STAND. FOOTREST

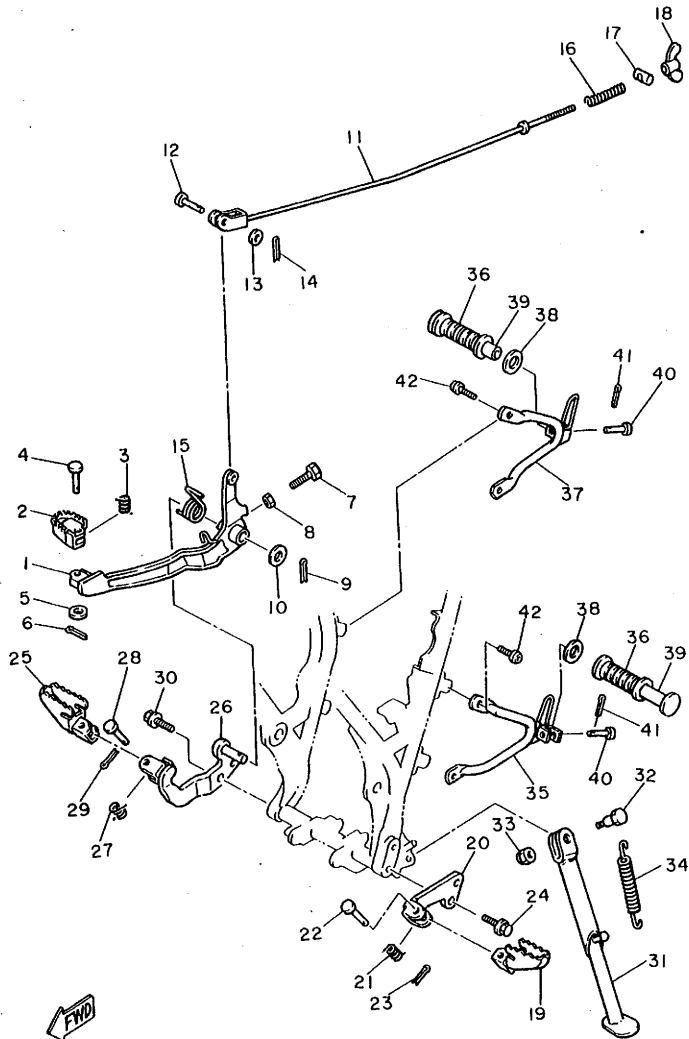


34L351-3290

REF. NO.	PART NO.	DESCRIPTION	Q'TY	REMARKS
1	34L-27211-01-90	PEDAL, brake	1	uni chrome (black)
2	1W2-27242-00	PEDAL, brake	1	
3	90508-14352	SPRING, torsion	1	
4	91701-06022	PIN, clevis	1	
5	92901-06600	WASHER, Plate	1	
6	91401-20015	PIN, cotter	1	
7	90101-06288	BOLT	1	
8	95301-06600	NUT	1	
9	91401-30020	PIN, cotter	1	
10	90201-14215	WASHER, Plate	1	
11	34L-27231-00	ROD, brake	1	
12	90240-06040	PIN, clevis	1	
13	92901-06200	WASHER, Plain	1	
14	91401-20015	PIN, cotter	1	
15	90508-32605	SPRING, torsion	1	
16	90501-10245	SPRING, compression	1	
17	90249-12008	PIN	1	
18	90175-06013	NUT, wing	1	
19	5Y1-27411-00-90	FOOTREST 1	1	uni chrome (black)
20	34L-27412-00-R4	BRACKET, footrest 1	1	black
21	90508-20023	SPRING, torsion	1	
22	91701-08038	PIN, clevis	1	
23	91401-25012	PIN, cotter	1	
24	95821-10025	BOLT, flange	2	
25	5Y1-27421-00-90	FOOTREST 2	1	uni chrome (black)
26	34L-27422-01	BRACKET, footrest 2	1	
27	90508-20023	SPRING, torsion	1	
28	91701-08038	PIN, clevis	1	

E3

FIG. 29 STAND. FOOTREST

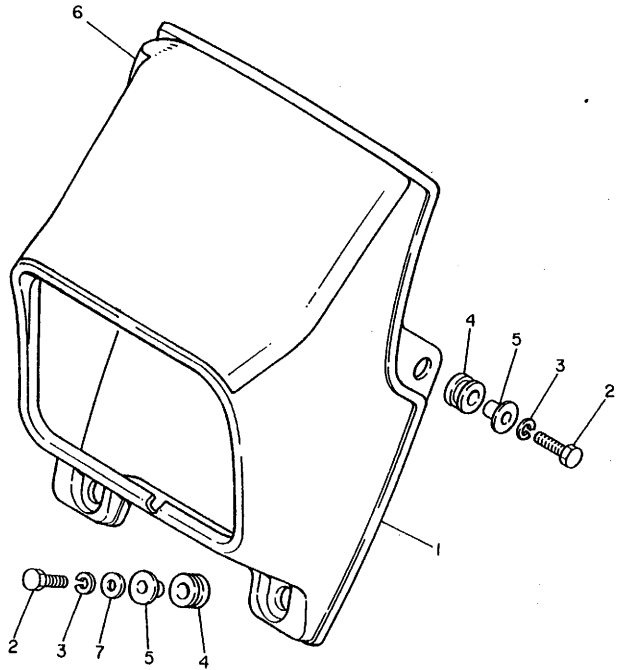


REF. NO.	PART NO.	DESCRIPTION	Q'TY	REMARKS
29	91401-25012	PIN, cotter	1	
30	95821-10025	BOLT, flange	2	
31	34L-27311-01-R4	STAND, side	1	black
32	90109-10473	BOLT	1	
33	90185-10037	NUT, self-locking	1	
34	90507-29009	SPRING, tension	1	
35	26F-27432-00-FH	BRACKET 1	1	UR fire red
	26F-27432-00-33	BRACKET 1	1	UR yamaha black
36	120-27433-00	COVER, rear footrest	2	
37	34L-27442-00-FH	BRACKET 2	1	UR fire red
	34L-27442-00-33	BRACKET 2	1	UR yamaha black
38	90201-20279	WASHER, Plate	2	
39	120-27431-00	FOOTREST, rear 1	2	
40	90240-06009	PIN, clevis	2	
41	91401-16015	PIN, cotter	2	
42	90109-08789	BOLT	4	

34L351-3290

FIG. 30 COWLING 1

REF. NO.	PART NO.	DESCRIPTION	Q'TY	REMARKS
1	17F-28351-00-G8	BODY, cowling	1	UR sky blue
	17F-28351-00-36	BODY, cowling	1	UR clean white
2	97306-06025	BOLT	4	
3	92906-06100	WASHER, sPring	4	
4	90480-14023	GROMMET	4	
5	90387-067F1	COLLAR	4	
6	34L-28368-00	EMBLEM	1	UR for syb
	34L-28368-10	EMBLEM	1	UR for w
7	90201-06059	WASHER, Plate	2	

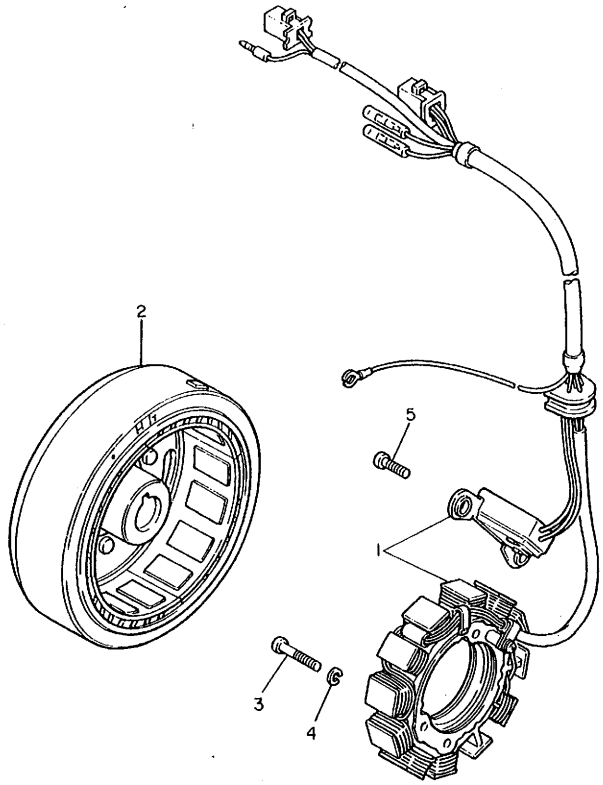


34L332-3300

E5

FIG. 31 GENERATOR

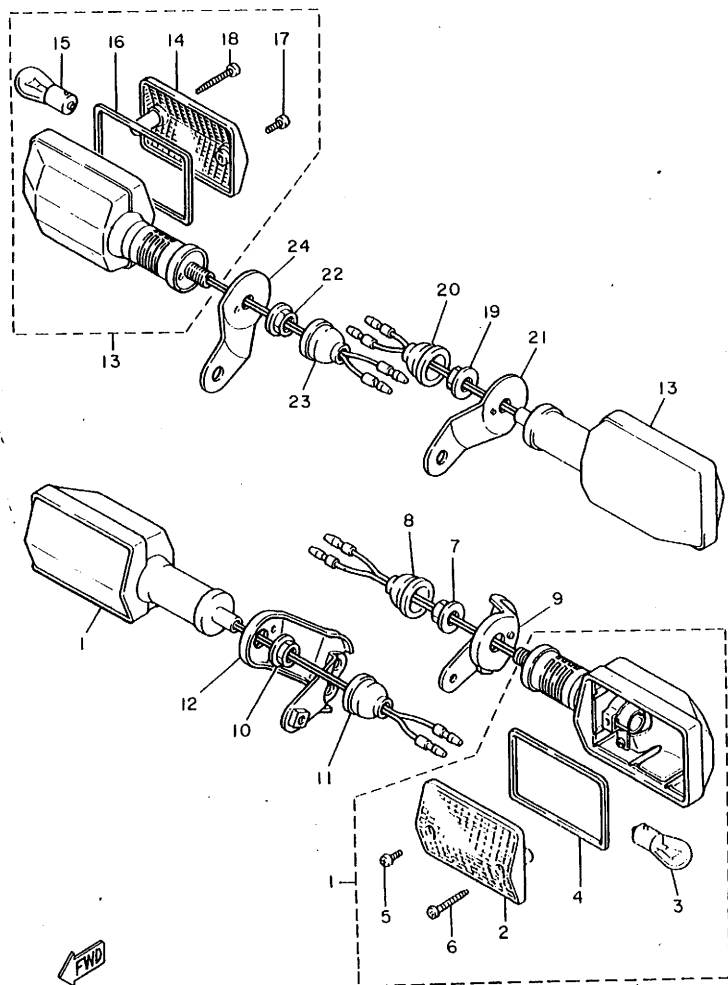
REF. NO.	PART NO.	DESCRIPTION	Q'TY	REMARKS.
1	5Y1-81410-50	STATOR ASSY	1	
2	5Y1-81450-50	ROTOR ASSY	1	
3	92502-06035	SCREW, Pan head	4	
4	92902-06100	WASHER, sPring	4	
5	92501-06020	SCREW, Pan head	2	



34L332-3310

**E6**

FIG. 32 FLASHER LIGHT

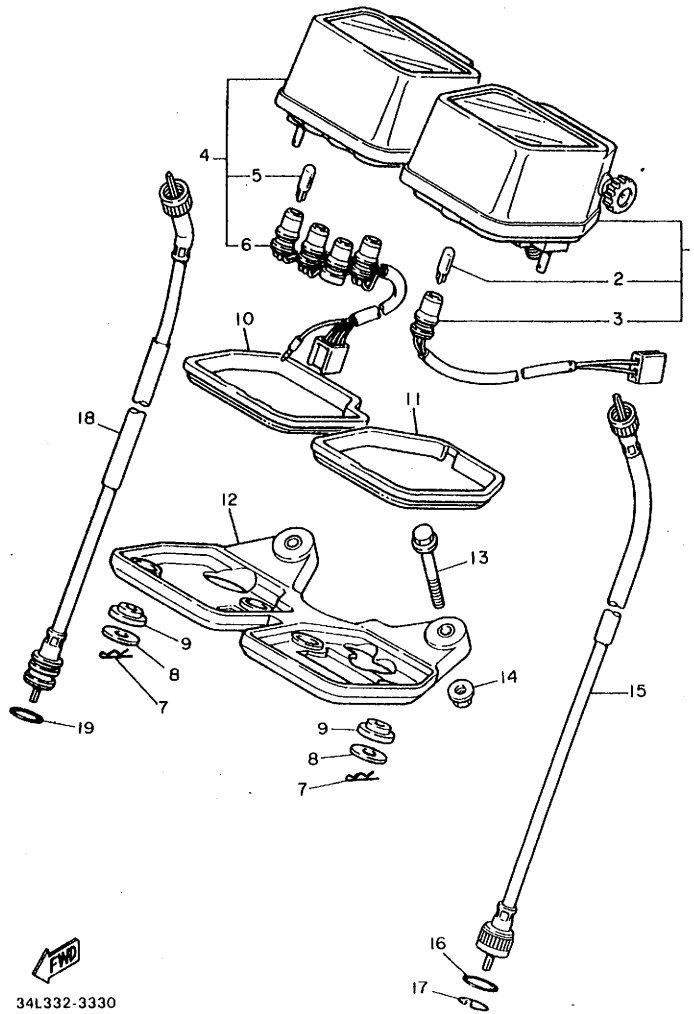


REF. NO.	PART NO.	DESCRIPTION	Q'TY	REMARKS.
1	5Y1-83330-70	FRONT FLASHER LIGHT ASSY 1	2	
2	5Y1-83312-00	.LENS, flasher	1	
3	256-83311-70	.BULB (12V-27W)	1	
4	5Y1-83313-00	.GASKET, flasher lens	1	
5	98503-04010	.SCREW, Pan head	1	
6	97702-40530	.SCREW, tapping	1	
7	95702-12100	NUT, flange	1	
8	10V-83365-00	CAP	1	
9	34L-83318-00	STAY, flasher 1	1	
10	95702-12100	NUT, flange	1	
11	10V-83365-00	CAP	1	
12	34L-83328-00	STAY, flasher 2	1	
13	5Y1-83330-70	REAR FLASHER LIGHT ASSY 1	2	
14	5Y1-83312-00	.LENS, flasher	1	
15	256-83311-70	.BULB (12V-27W)	1	
16	5Y1-83313-00	.GASKET, flasher lens	1	
17	98503-04010	.SCREW, Pan head	1	
18	97702-40530	.SCREW, tapping	1	
19	95702-12100	NUT, flange	1	
20	10V-83365-00	CAP	1	
21	15A-83368-00	STAY, flasher	1	
22	95702-12100	NUT, flange	1	
23	10V-83365-00	CAP	1	
24	15A-83369-00	STAY, flasher	1	

FWD  
39E700-3320

E7

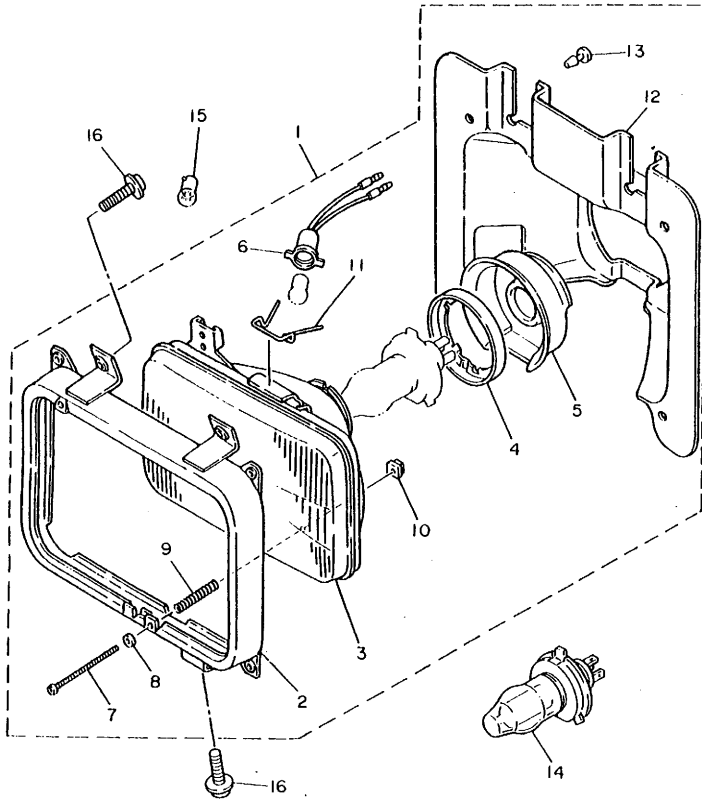
FIG. 33 METER



REF. NO.	PART NO.	DESCRIPTION	Q'TY	REMARKS
1	5Y3-83570-F0	SPEEDMETER ASSY	1	km/h
2	4G1-84744-00	.BULB (12V 3.4W)	1	
3	5Y1-83536-00	.SOCKET, meter	1	
4	5Y3-83540-00	TACHOMETER ASSY	1	
5	4G1-84744-00	.BULB (12V 3.4W)	4	
6	5Y1-83520-00	.SOCKET CORD ASSY	1	
7	437-83525-00	CLIP	4	
8	90201-05033	WASHER, Plate	4	
9	1M1-83526-00	DAMPER 2	4	
10	5Y1-83541-00	DAMPER	1	
11	5Y1-83513-00	DAMPER	1	
12	5Y1-83519-00	BRACKET, meter	1	
13	95806-06035	BOLT, flange	2	
14	95706-06100	NUT, flange	2	
15	34L-83550-00	SPEEDMETER CABLE ASSY	1	
16	93210-14104	O-RING	1	
17	102-25137-00	RING, stop	1	
18	34L-83560-00	TACHOMETER CABLE ASSY	1	
19	93210-14104	O-RING	1	

34L332-3330

FIG. 34 HEADLIGHT



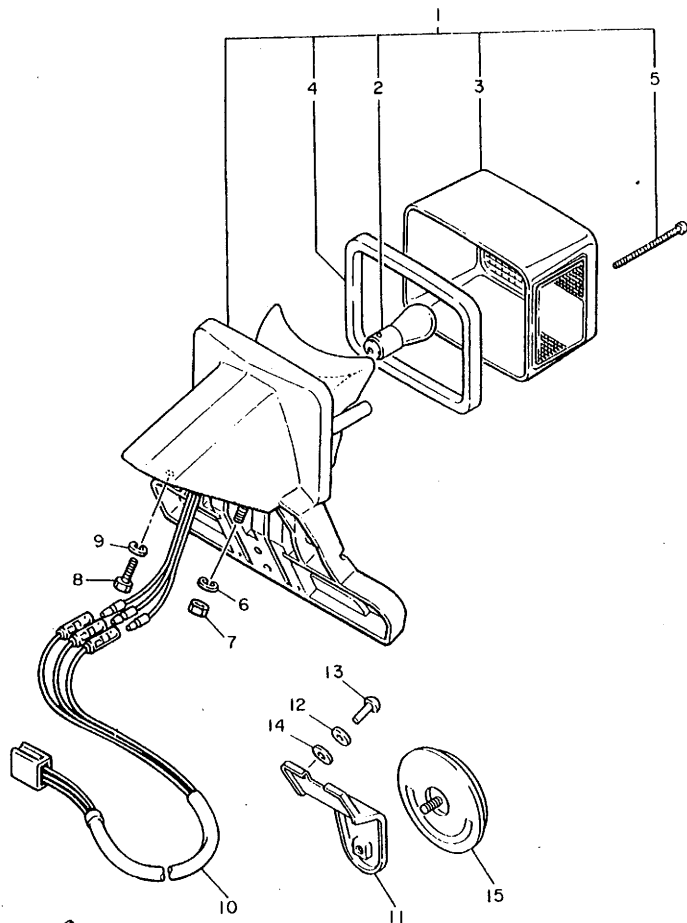
REF. NO.	PART NO.	DESCRIPTION	Q'TY	REMARKS
1	39E-84303-H0	HEADLIGHT UNIT ASSY	1	
2	10V-84115-00	•RIM, headlight	1	
3	5G8-84321-H0	•LENS, headlight	1	
4	2F9-84375-00	•FITTING PLATE, bulb	1	
5	2F9-84397-01	•COVER, socket	1	
6	457-84146-85	•SOCKET, Pilot light	1	
7	98506-05012	•SCREW, Pan head	2	
8	233-84127-60	•WASHER, special	2	
9	5G2-84332-60	•SPRING, screw	2	
10	198-84334-60	•NUT, adjusting	2	
11	5G2-84324-A0	•SPRING, reflector	1	
12	10V-84196-00	•COVER, socket	1	
13	10V-84198-00	•CLIP, cover fitting	4	
14	*	BULB (12V-60/55W)	1	LM
15	*	BULB (12V 3.4W)	1	LM
16	90159-06033	SCREW, with washer	3	



39E700-3340

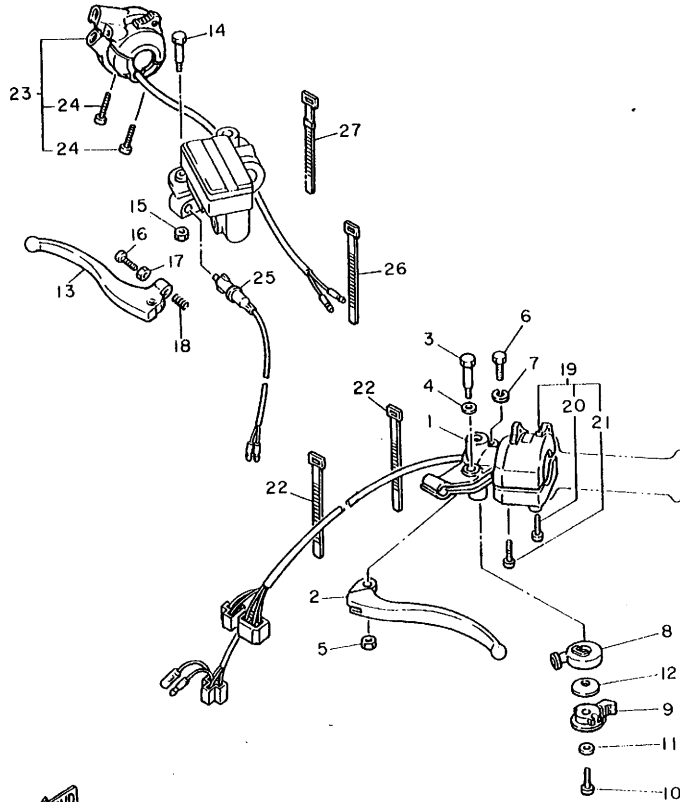
FIG. 35 TAILLIGHT

REF. NO.	PART NO.	DESCRIPTION	Q'TY	REMARKS
1	5Y7-84700-00	TAILLIGHT ASSY	1	
2	256-84714-61	.BULB (12V-27/8W)	1	
3	1M1-84521-60	.LENS, taillight	1	
4	15A-84545-00	.GASKET, lens	1	
5	3Y1-84524-00	.SCREW, lens fitting	2	
6	92902-06100	WASHER, spring	2	
7	95302-06600	NUT	2	
8	97302-06025	BOLT	1	
9	92902-06100	WASHER, spring	1	
10	5Y1-84717-00	CORD, taillight	1	
11	10V-85132-01	BRACKET, reflector 1	1	
12	90201-044A2	WASHER, Plate	4	
13	90267-40076	RIVET, blind	2	
14	90201-06055	WASHER, Plate	4	
15	449-85131-01	REFLECTOR, rear 1	1	



39E700-3350

FIG. 36 HANDLE SWITCH, LEVER

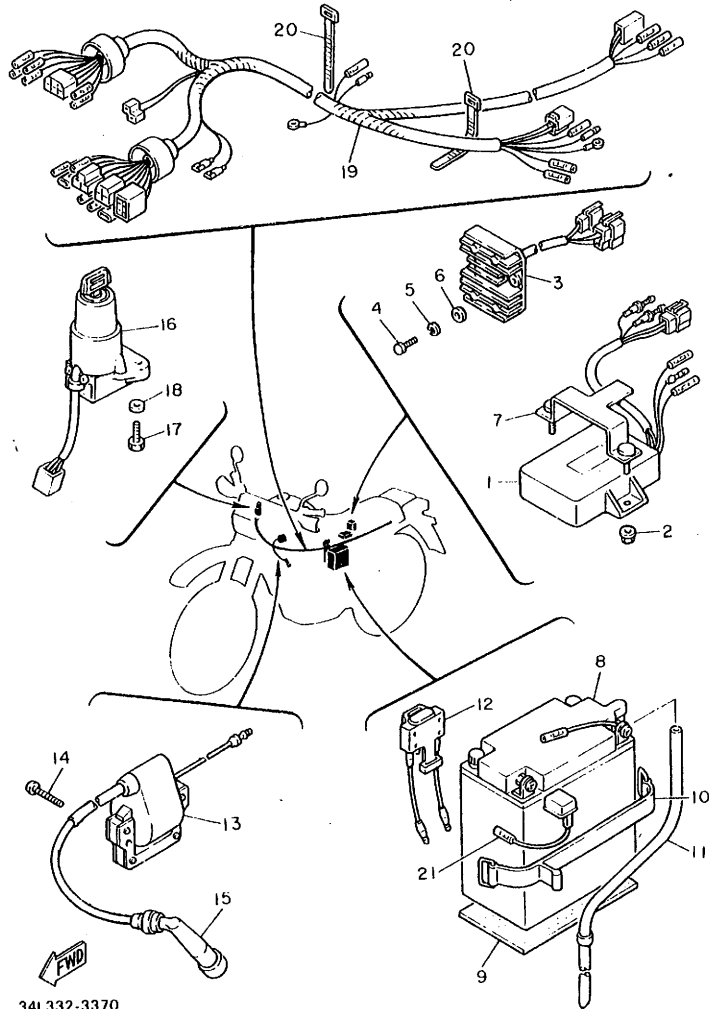


REF. NO.	PART NO.	DESCRIPTION	Q'TY	REMARKS
1	5Y1-82911-01	HOLDER, lever 1	1	
2	5Y1-83912-00	LEVER 1	1	
3	90109-06410	BOLT	1	
4	90201-08083	WASHER, Plate	1	
5	95601-06100	NUT, u	1	
6	97306-06022	BOLT	1	
7	92906-06100	WASHER, sPring	1	
8	5Y1-83942-00	COVER, starter	1	
9	5Y1-83941-00	LEVER, starter	1	
10	90153-06042	SCREW, hexa&on	1	
11	92906-06200	WASHER, Plain	1	
12	90209-10131	WASHER	1	
13	34L-83922-00	LEVER 2	1	
14	90109-06774	BOLT	1	
15	95606-06100	NUT, u	1	
16	90149-06153	SCREW	1	
17	90170-06010	NUT	1	
18	90501-10312	SPRING, comPression	1	
19	30X-83972-00	SWITCH, handle 4	1	
20	98506-05030	.SCREW, Pan head	1	
21	98506-05035	.SCREW, Pan head	1	
22	437-83936-00	BAND, switch cord	2	
23	3Y1-83976-01	SWITCH, handle 1	1	
24	98501-05020	.SCREW, Pan head	2	
25	1A0-83980-30	FRONT STOP SWITCH ASSY	1	
26	437-83936-00	BAND, switch cord	1	
27	437-83936-10	BAND, switch cord	1	

  
34L332-3360

FIG. 37 ELECTRICAL 1

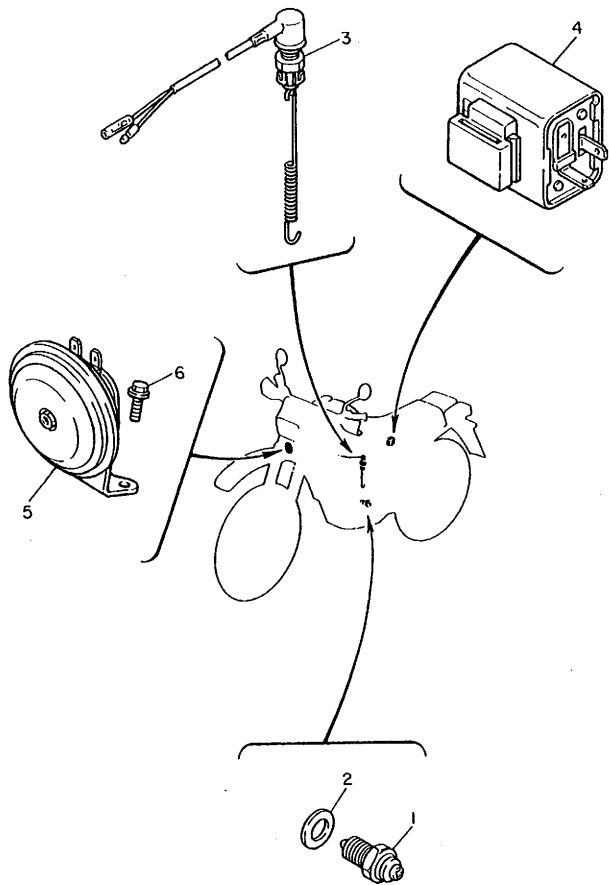
REF. NO.	PART NO.	DESCRIPTION	Q'TY	REMARKS
1	34L-85540-50	C.D.I. UNIT ASSY	1	
2	95701-06100	NUT, flange	2	
3	34L-81960-A0	RECTIFIER & REGULATOR ASSY	1	
4	97301-06016	BOLT	2	
5	92902-06600	WASHER	2	
6	90201-06674	WASHER, Plate	2	
7	34L-8553A-00	STAY UNIT	1	
8	235-82110-79	BATTERY ASSY (12N14-3A)	1	
9	5Y1-82122-00	SEAT, battery	1	
10	4J2-82131-01	BAND, battery	1	
11	90445-08782	HOSE	1	
12	5Y1-82180-00	CIRCUIT BREAKER ASSY	1	
13	34K-82310-51	IGNITION COIL ASSY	1	
14	92502-06025	SCREW, Pan head	2	
15	371-82370-00	PLUG CAP ASSY	1	
16	5Y3-82501-80	MAIN SWITCH STEERING LOCK	1	
17	97301-06016	BOLT	2	
18	92902-06600	WASHER	2	
19	34L-82590-00	WIRE HARNESS ASSY	1	
20	437-83936-00	BAND, switch cord	2	
21	2J2-82115-01	WIRE, Plus lead	1	



34L332-3370

FIG. 38 ELECTRICAL 2

REF. NO.	PART NO.	DESCRIPTION	Q'TY	REMARKS
1	2H7-82540-00	NEUTRAL SWITCH ASSY	1	
2	90430-10148	GASKET	1	
3	34L-82530-00	STDP SWITCH ASSY	1	
4	30X-83350-20	FLASHER RELAY ASSY	1	
5	34L-83371-20	HORN	1	
6	95801-06010	BOLT, flange	2	



34L332-3380

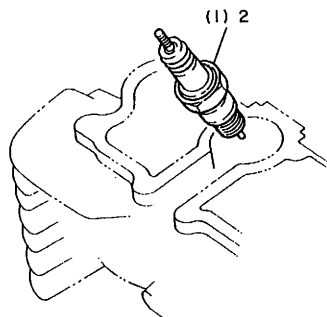
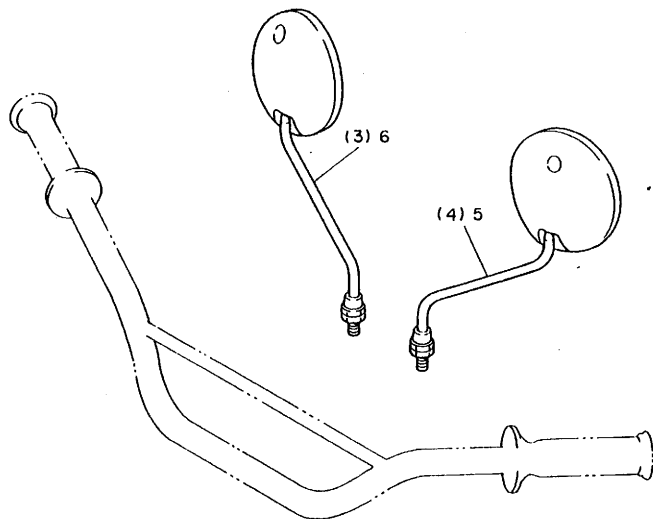
**E13**

8  
**FOR**

**S. AFRICA**

FIG. 39 ALTERNATE

REF. NO.	PART NO.	DESCRIPTION	Q'TY	REMARKS
1	94701-00189	PLUG, sPark (NGK D7EA)	*	
2	94701-00208	PLUG, sPark (NGK DR7ES)	1	with resistor
3	1Y1-26290-40	BACK MIRROR ASSY (R.H)	*	
4	5Y4-26290-30	BACK MIRROR ASSY (L.H)	*	
5	5Y3-26290-50	BACK MIRROR ASSY (L.H)	1	
6	1Y1-26290-60	BACK MIRROR ASSY (R.H)	1	



39E700-3390

\* For Convenience of reference:

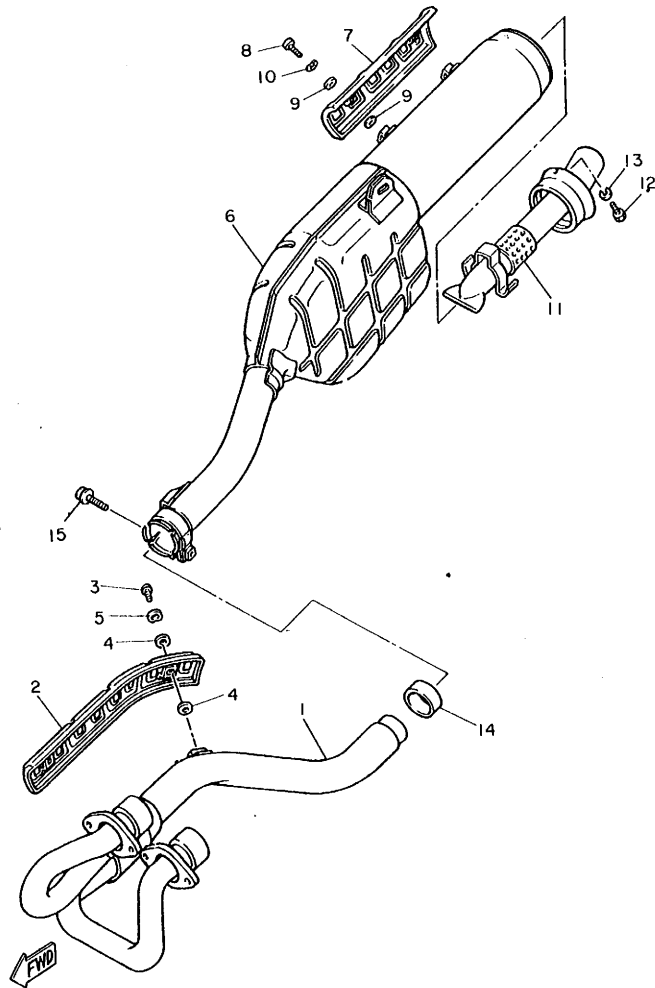
Disregard the items asterisked (\*) in the "QTY" column. These are intended for GENERAL SPEC, and NOT for INDIVIDUAL SPEC.

**E15**

**FOR**

**NEW ZEALAND**

FIG. 40 ALTERNATE (ENGINE)



34L300-3390

REF. NO.	PART NO.	DESCRIPTION	Q'TY	REMARKS
1	34K-14611-00	PIPE, exhaust 1	1	
2	34K-14628-00	PROTECTOR, exhaust Pipe	1	
3	90164-06017	SCREW, tapping	2	
4	30X-14766-00	WASHER, Protector	4	
5	90206-06060	WASHER, wave	2	
6	34L-14711-00	MUFFLER 1	1	
7	34L-14728-00	PROTECTOR, muffler 2	1	
8	98906-06010	SCREW, bind	2	
9	583-14766-00	WASHER, Protector	4	
10	90206-06060	WASHER, wave	2	
11	34L-14752-60	PIPE, outlet	1	
12	97301-06008	BOLT	1	
13	92901-06100	WASHER, spring	1	
14	34K-14714-00	GASKET, muffler	1	
15	95816-08045	BOLT, flange	1	

NUMERICAL INDEX

PART NO.	GRID NO.	PART NO.	GRID NO.	PART NO.	GRID NO.	PART NO.	GRID NO.	PART NO.	GRID NO.	PART NO.	GRID NO.
4L0-W0041-00	D-15	34K-12161-00	B-7	34K-14305-00	B-13	30X-14766-00	F-3	5Y1-17121-00	C-8	34L-21711-00-1X	C-15
34L-W0045-10	D-11	34K-12162-00	B-7	5Y1-14311-45	B-12	583-14766-00	B-14	5Y1-17131-00	C-8	34L-21711-00-2X	C-15
404-W0048-30	D-11	34K-12163-00	B-7	5Y1-14325-00	B-12		F-3	5Y1-17141-00	C-8	34L-21721-00-1X	C-15
4X8-W0057-00	D-11	5Y1-12166-00	B-7	5Y3-14341-00	B-12	5Y1-1490A-00	B-13	5Y1-17151-01	C-8	34L-21721-00-2X	C-15
5Y1-W1343-00	B-9	5Y1-12170-00	B-8	5H0-14342-24	B-12	34L-1490J-10	B-12	34L-17211-00	C-8	2J5-21732-00	C-12
34L-W2313-00	D-6	5Y1-12176-00	B-8	288-14343-63	B-12	5Y3-1490J-01	B-12	5Y1-17221-00	C-8	34L-2174A-00	C-15
34L-W2314-00	D-6	5Y1-12210-00	B-8	5Y1-14343-63	B-13	34K-1490K-00	B-13	5Y1-17231-00	C-8	34L-21750-00	C-15
34L-11101-00	B-2	4X7-12213-00	B-8	5Y1-14349-00	B-12	34L-14905-00	B-13	5Y1-17241-01	C-8	34L-21756-00	C-15
583-11127-00	B-2	5Y1-12231-00	B-8	5Y1-14355-00	B-12	34L-15100-00	B-15	5Y1-17251-00	C-8	34L-2176E-01	C-12
	B-4	5Y1-12241-00	B-8	5Y1-14356-00	B-13	34K-15411-00	B-15	5Y1-17402-00	C-8	34L-21761-01	C-15
4H7-11133-10	B-2	5Y1-12283-00	B-8	5Y1-14357-00	B-12	34K-15411-00	C-2	34L-17410-00	C-8	34L-2177G-00	C-15
34K-11145-00	B-6	5Y1-12288-00	B-2	5Y1-14358-00	B-13	5Y1-15417-00	C-2	34L-17411-00	C-8	34L-21781-00	C-15
34L-11166-00	B-15	34L-12292-00	B-3	5Y1-14384-00	B-12	5Y1-15421-01	C-2	3Y1-17456-00	C-8	34L-21781-10	C-15
34K-11181-00	B-4	583-13113-00	B-9	5Y1-14385-00	B-12	5Y1-15427-00	B-9	5Y1-17461-50	C-8	34L-22110-01	D-2
1H2-11186-00	B-2	5Y1-13300-00	B-9	5Y1-14385-00	B-12	5Y1-15431-00	C-2	5Y1-17471-00	C-8	34L-22117-00	D-3
5Y1-11187-00	B-2	5Y1-13325-00	B-9	689-14386-00	B-12	5Y1-15441-00	C-2	5Y1-17800-00	B-2	34L-22123-00	D-2
214-11198-01	B-9	5Y1-13371-00	B-10	5Y1-14396-00	B-12	5Y1-15451-01	C-2	5Y1-18101-00	C-11	34L-22124-00	D-2
34L-11310-00	B-4	5Y1-13415-01	B-9	5Y1-14397-00	B-12	34K-15462-00	C-2	5Y1-18102-00	C-11	2K6-22128-01	D-2
34K-11351-00	B-4	4X7-13440-01	B-9	5Y1-14398-00	B-12	3Y1-1561A-02	C-4	34L-18110-00	C-11	34L-22128-00	D-2
5Y1-11400-00	B-5	34L-13443-00	B-10	34L-14401-00	B-11	5Y1-1561G-00	C-5	1W6-18113-00	C-11	23X-22129-00	D-3
5Y1-11412-09	B-5	583-13447-00	B-9	34L-14412-00	B-11	5Y1-1562F-01	C-3	5Y1-18120-01	C-11	34L-22129-00	D-4
5Y1-11422-00	B-5	11H-13455-00	B-9	34L-1442F-00	B-11	5Y1-15620-00	C-4	5Y1-18140-00	C-10	3R4-22141-00	D-3
34K-11454-00	B-5	34L-13464-00	B-10	34L-14425-00	B-11	5Y1-15621-00	C-4	5Y1-18185-00	C-10	34L-22147-00	D-2
5Y1-11496-01	B-5	34L-13465-01	B-10	34L-14426-00	B-11	5Y1-15641-00	C-4	5Y1-18511-00	C-10	5X6-22151-10	D-2
5Y1-11531-00	B-5	34L-13466-01	B-10	34L-14437-00	B-11	117-15644-00	C-8	5Y1-18512-00	C-10	34L-22153-00	D-2
5Y1-11536-01	B-5	34L-13470-00	B-10	34L-14451-00	B-11	5Y1-15645-00	C-2	5Y1-18513-00	C-10	34L-2216G-00	D-2
34L-11610-00	B-5	16G-13569-00	B-10	34K-14453-00	B-11	5Y1-15660-00	C-4	11H-18531-00	C-10	34L-2217A-00	D-2
34L-11610-20	B-5	34K-13586-00	B-11	34L-14458-00	B-11	5Y1-15665-00	C-4	5Y1-18535-00	C-10	34L-2217F-00	D-2
34L-11610-40	B-5	34K-13596-00	B-11	34L-14461-00	B-11	2K7-15668-00	C-4	5Y1-18540-00	C-10	22W-22178-01	C-13
34L-11631-00-A0	B-5	5Y1-1410A-00	B-13	2J2-14468-00	B-11	248-15668-00	C-4	39E-21110-00-FH	C-12	34L-2218A-00	D-2
34K-11633-00	B-5	34K-14103-00	B-12	4H7-14484-00	C-15	5Y1-15671-00	C-4	39E-21110-00-33	C-12	34L-2218A-10	D-2
34L-11636-00	B-5	5Y3-14105-00	B-12	5Y1-14536-00	B-13	214-15674-00	C-4	34L-21170-00	C-14	4V4-22184-00	C-13
34L-11638-00	B-5	5Y1-14107-00	B-12	5Y1-14556-00	B-13	168-15676-00	C-4	5H0-21308-00	D-10	34L-22189-00	D-3
5Y1-11651-00	B-5	5Y1-14115-00	B-12	5Y1-14572-00	B-13	214-15686-00	C-4	34L-21315-00	C-12	34L-22210-00-26	D-4
5Y1-11681-00	B-5	5Y1-14131-00	B-13	34K-14611-00	B-14	34K-16111-00	C-6	34L-21316-00-FH	C-12	34L-22210-00-6W	D-4
5Y1-12111-00	B-7	5Y1-14137-00	B-13		F-3	34L-16150-00	C-6	34L-21316-00-33	C-12	34L-22212-00-26	D-4
5Y1-12113-00	B-7	5Y1-14146-00	B-13	5Y1-14613-00	B-14	3Y1-16154-00	C-6	5Y1-21441-00	C-12	34L-22212-00-6W	D-4
5Y1-12114-00	B-7	5Y1-14148-00	B-13	34K-14628-00	B-14	5Y1-16321-00	C-6	5Y1-21471-00	C-12	30X-22213-00	D-4
4H7-12116-00	B-7	5Y1-14149-00	B-13	34L-14711-00	F-3	360-16325-00	C-6	34L-21485-00	C-12	30X-22214-00	D-4
2F3-12117-00	B-7	5Y1-14159-00	B-13		F-3	5Y1-16331-00	C-6	34L-21486-00	C-12	34L-22216-00	D-4
1J7-12118-00	B-7	5Y1-14197-00	B-13		B-14	5Y1-16351-00	C-6	34L-21486-00	C-14	3Y1-22223-00	D-4
1J7-12119-01	B-7	5Y1-14198-00	B-12	34K-14714-00	B-14	5Y1-16356-00	C-6	34L-21510-20	C-14	4X7-22224-00	D-4
34K-12121-00	B-7	5Y1-14203-00	B-12		F-3	5Y1-16357-00	C-7	34L-21510-30	C-14	34L-22226-00	D-4
5Y1-12146-00	B-7	5Y1-14216-00	B-13	34L-14728-00	B-14	1W1-16358-00	C-6	34L-21575-00	C-14	34L-22228-00	D-4
34K-12151-00	B-7	5Y1-14286-00	B-12		F-3	5Y1-16371-01	C-6	34L-21575-10	C-14	30X-22228-00	D-4
5Y1-12156-00	B-7	5Y1-14293-00	B-13	34L-14752-00	B-14	34K-16381-00	C-6	34L-21611-00	C-14	34L-22311-00	D-3
3Y1-12159-00	B-7	34L-14301-00	B-12	34L-14752-60	F-3	5Y1-16383-00	C-6	34L-21611-20	C-14	34L-22401-00	D-4
				30X-14766-00	B-14	214-16389-00	C-6	34L-21685-00	B-11	34L-22409-00	D-4
									C-14	34K-22493-00	D-4

NUMERICAL INDEX

PART NO.	GRID NO.	PART NO.	GRID NO.	PART NO.	GRID NO.
34L-23110-00	D-6	34L-23318-00	D-5	5Y1-25364-00	D-13
34L-23111-00	D-6	39E-23340-00-39	D-7	5Y1-25366-00-98	D-13
	D-7	34L-23351-00	D-6	5Y1-25377-00	D-13
34L-23114-00	D-6	34L-23389-00	D-5	34L-25381-01	D-14
	D-7	1W1-23416-00	D-5	34L-25388-00	D-14
1E7-23119-00	D-6	3Y6-23434-00	D-5	34L-25389-00	D-14
34L-23130-00-38	D-6	34L-23435-00-98	D-5	2X6-25394-00	D-13
34L-23135-00	D-6	1E6-23441-00	D-5	156-25398-00	D-11
	D-7	3Y6-23442-00-98	D-5		D-13
34L-23140-00-38	D-6	34L-23489-00	D-7	5Y1-25412-00	D-13
34L-23141-00	D-6	34L-24110-00-01	D-9	5Y1-25439-20	D-13
	D-7	34L-24110-00-02	D-9	34L-25810-10	D-11
34L-23142-00	D-6	34L-24161-00	D-9	11U-25827-10	D-11
	D-7	34L-24161-10	D-9	34L-25831-00	D-11
34L-23144-00	D-6	156-24181-00	D-9	4L0-25850-02	D-15
	D-7	34L-24182-00	D-9	4L0-25852-00	D-15
34L-23145-00	D-6	34L-24183-00	D-9	4L0-25854-00	D-15
	D-7	34L-24184-00	D-9	4L0-25862-00	D-15
3H3-23147-00	D-6	34L-24240-00	D-9	4L0-25867-00	D-15
	D-7	34L-24240-10	D-9	39E-25872-00	D-15
34L-23147-00	D-6	34L-24311-00	D-9	4X8-25917-00	D-11
	D-7	34L-24500-00	D-9	34L-25919-00	D-11
34L-23151-00	D-6	360-24512-00	B-12	5R2-25937-00	D-11
	D-7	4X8-24512-00	D-9	34L-26111-00	D-15
34L-23153-00	D-6	4X8-24533-00	D-9	34L-26141-00	E-2
	D-7	34L-24610-00	D-9	34L-26141-10	E-2
34L-23157-00	D-6	34L-24731-00	D-10	34L-26142-00	E-2
	D-7	34L-24731-10	D-10	34L-26142-10	E-2
34L-23166-00	D-6	34L-24734-00	D-10	33G-26241-00	D-15
	D-7	34L-24770-00	D-10	33G-26242-00	D-15
34L-23167-00	D-7	34L-24770-10	D-10	3Y1-26243-00	D-15
34L-2317E-00	D-5	34L-24830-00-98	D-10	3Y1-26249-00	D-15
34L-23170-00	D-6	34L-25104-00	D-11	1Y1-26290-40	D-15
	D-7	34L-25111-00-98	D-11		E-15
34L-23171-00	D-6	322-25118-00	D-11	1Y1-26290-60	E-15
	D-7	102-25137-00	E-8	5Y3-26290-50	E-15
3M7-23181-00	D-6	5Y1-25151-00	D-13	5Y4-26290-30	D-15
	D-7	34L-25181-00	D-11		E-15
34L-23181-00	D-7	34L-25190-00	D-11	34L-26311-00	D-15
34L-23190-00	D-6	34L-25304-00	D-13	34L-26312-00	D-15
	D-7	5Y1-25311-00-98	D-13	34L-26331-00	D-15
5K7-23190-00	D-6	146-25315-00	D-13	34L-26335-00	D-15
	D-7	5X4-25317-00	D-13	1E6-26342-00	D-13
34L-23191-00	D-7	34L-25321-00-98	D-13	5Y1-26339-00	D-13
34L-23192-00	D-7	4G0-2533A-00	D-13	4N0-27114-00	C-12
3Y1-2331E-00	D-5	34L-2533E-01	D-14	34L-27211-01-90	E-3
34L-2331E-00	D-5	5Y1-25330-00	D-13	34L-27231-00	E-3
		34L-25355-00	D-13	1W2-27242-00	E-3
				34L-27311-01-R4	E-4

NUMERICAL INDEX

PART NO.	GRID NO.	PART NO.	GRID NO.	PART NO.	GRID NO.
5Y1-27411-00-90	E-3	5Y1-83536-00	E-8	90109-06410	E-11
34L-27412-00-R4	E-3	5Y3-83540-00	E-8	90109-06418	B-3
5Y1-27421-00-90	E-3	5Y1-83541-00	E-8	90109-06419	B-9
34L-27422-01	E-3	34L-83550-00	E-8	90109-06757	D-11
120-27431-00	E-4	34L-83560-00	E-8	90109-06774	E-11
26F-27432-00-FH	E-4	5Y3-83570-F0	E-8	90109-08705	C-13
26F-27432-00-33	E-4	5Y1-83912-00	E-11	90109-08789	E-4
120-27433-00	E-4	34L-83922-00	E-11	90109-10473	E-4
34L-27442-00-FH	E-4	437-83936-00	E-11	90109-10759	D-3
34L-27442-00-33	E-4		E-12	90109-10760	D-3
34L-28100-00	C-15	437-83936-10	E-11	90109-120A3	D-2
34L-28185-00	C-14	5Y1-83941-00	E-11	90116-10087	B-15
17F-28351-00-G8	E-5	5Y1-83942-00	E-11	90116-10263	B-15
17F-28351-00-36	E-5	30X-83972-00	E-11	90116-10348	D-13
34L-28368-00	E-5	3Y1-83976-01	E-11	90116-10378	B-2
34L-28368-10	E-5	1A0-83980-30	E-11	90119-06056	D-10
5Y1-81410-50	E-6	10V-84115-00	E-9	90119-06063	C-14
5Y1-81450-50	E-6	233-84127-60	E-9	90119-06101	D-2
34L-81960-A0	E-12	457-84146-85	E-9	90123-08046	D-15
235-82110-79	E-12	10V-84196-00	E-9	90149-05110	B-9
2J2-82115-01	E-12	10V-84198-00	E-9	90149-06011	D-9
5Y1-82122-00	E-12	39E-84303-H0	E-9	90149-06153	E-11
4J2-82131-01	E-12	5G8-84321-H0	E-9	90149-08067	C-6
5Y1-82180-00	E-12	5G2-84324-A0	E-9	90151-06017	C-10
34K-82310-51	E-12	5G2-84332-60	E-9	90152-06010	C-4
371-82370-00	E-12	198-84334-60	E-9	90153-06042	E-11
5Y3-82501-80	E-12	2F9-84375-00	E-9	90159-06016	C-6
34L-82530-00	E-13	2F9-84397-01	E-9		C-10
2H7-82540-00	E-13	1M1-84521-60	E-10	90159-06033	E-9
34L-82590-00	E-12	3Y1-84524-00	E-10	90164-06017	B-14
12R-82591-00	D-9	15A-84545-00	E-10		F-3
5Y1-82911-01	E-11	5Y7-84700-00	E-10	90170-06010	E-11
256-83311-70	E-7	5Y1-84714-61	E-10	90170-06128	B-7
5Y1-83312-00	E-7	5Y1-84717-00	E-10	90170-10219	D-13
5Y1-83313-00	E-7	4G1-84744-00	E-8	90170-16326	B-6
34L-83318-00	E-7	449-85131-01	E-10	90170-20213	D-4
34L-83328-00	E-7	10V-85132-01	E-10	90170-20274	C-6
5Y1-83330-70	E-7	34L-8553A-00	E-12	90170-20327	C-6
30X-83350-20	E-13	34L-85540-50	E-12	90171-14020	D-11
10V-83365-00	E-7	90101-06288	E-3	90171-16024	D-14
15A-83368-00	E-7	90101-06291	D-13	90175-06013	E-3
15A-83369-00	E-7	90101-10308	D-12	90176-08026	B-4
34L-83371-20	E-13	90101-12498	D-4	90179-06306	B-14
5Y1-83513-00	E-8	90105-07087	B-8	90179-08148	D-15
5Y1-83519-00	E-8	90105-08213	B-4	90179-10201	B-4
5Y1-83520-00	E-8	90105-08214	B-4	90179-10279	B-4
437-83525-00	E-8	90105-10286	C-12	90179-14317	B-5
1M1-83526-00	E-8	90105-14102	D-5	90179-25033	D-5

NUMERICAL INDEX

PART NO.	GRID NO.	PART NO.	GRID NO.	PART NO.	GRID NO.
90185-10037	E-4	90206-12075	B-7	90430-06166	B-9
90185-10060	C-12	90206-14067	D-4	90430-08119	C-6
90185-10120	D-3	90209-06174	B-10		C-15
90185-12080	D-4	90209-06187	C-14	90430-08178	B-4
90185-12119	D-2	90209-10131	E-11		B-15
90185-16103	D-3	90209-22191	C-8	90430-10148	E-13
90201-044A2	E-10	90209-34254	B-5	90445-08782	E-12
90201-05033	E-8	90215-16230	B-6	90445-11753	C-15
90201-060H4	D-9	90215-20197	C-6	90460-46206	B-11
90201-06052	C-14	90215-20231	C-6	90460-51059	B-11
90201-06055	E-10	90240-06009	E-4	90462-10107	C-2
90201-06059	E-5	90240-06040	E-3	90462-16102	B-10
90201-062A8	D-3	90240-14106	D-4	90464-19057	D-5
90201-06674	E-12	90243-06016	C-6	90465-14242	D-5
90201-06765	C-12	90249-12008	E-3	90467-09006	D-9
90201-08083	E-11	90267-32070	C-14	90467-10008	C-15
90201-08113	C-13	90267-32072	D-3	90467-10039	B-11
90201-08326	B-14	90267-40076	E-10	90467-14015	B-15
90201-08609	B-4	90267-48079	C-12	90468-12006	D-5
90201-087F0	C-14	90280-05013	B-5	90468-15009	D-15
90201-087G0	B-4	90282-05013	B-6	90480-01141	C-15
90201-100E9	D-3	90282-07042	C-6	90480-01321	C-15
90201-10118	D-15	90336-18038	C-4	90480-01385	D-11
90201-10124	B-4	90340-14079	B-2	90480-10068	C-2
90201-10135	C-5		C-2		D-14
90201-10141	D-5	90340-36078	C-2	90480-12053	B-10
90201-10430	D-3	90380-14095	D-2	90480-13197	B-10
90201-10590	B-4	90380-14130	D-4		C-15
90201-120A5	D-2	90380-22111	D-2	90480-14023	E-5
90201-12362	D-4	90386-20120	D-2	90480-14229	C-12
90201-12474	C-11	90386-20123	D-3	90480-15235	B-10
90201-13409	C-13	90387-060A7	B-10	90480-16233	B-10
90201-140G9	D-2		C-12	90501-05378	B-9
90201-14215	E-3	90387-063F7	C-10	90501-10245	E-3
90201-14226	B-5	90387-06500	C-15	90501-10312	E-11
90201-15701	C-4		E-2	90501-12081	C-4
90201-15785	D-11	90387-067F1	C-14	90501-16107	C-4
90201-17327	C-7		E-5	90501-22721	B-5
90201-20276	C-4	90387-085E1	C-13	90501-26148	C-6
	C-8	90387-121H1	D-3	90507-20002	D-13
90201-20279	E-4	90387-122J6	D-3	90507-29009	E-4
90201-20685	C-4	90387-152J3	D-11	90508-14352	E-3
90201-244A8	D-2	90387-16782	B-15	90508-14524	C-5
90201-251F6	D-3	90387-17783	B-15	90508-14526	C-7
90201-301F4	B-5	90387-22660	E-2	90508-18551	B-3
90202-06010	D-9	90387-440G3	D-2	90508-20023	E-3
	B-14	90401-10034	D-15	90508-29527	C-10
90206-06060	F-3	90430-05126	B-9	90508-29528	C-11
		90430-06014	B-3		

NUMERICAL INDEX

PART NO.	GRID NO.	PART NO.	GRID NO.	PART NO.	GRID NO.
90508-32529	C-4	92501-06012	D-5	92906-06600	B-2
90508-32605	E-3	92501-06014	B-9	92906-08100	C-12
90560-15240	D-11	92501-06020	C-14		
91316-06012	B-10		E-2	93101-14092	C-2
	D-5		E-6	93101-25106	B-6
91316-06016	B-10	92502-06025	E-12	93102-07261	B-2
	E-13	92502-06035	E-6	93102-10207	C-4
	E-12	92506-06012	D-3	93102-11262	B-2
91316-06018	B-2	92701-06012	B-15	93102-12106	B-3
91316-06020	B-11	92701-06015	D-10		C-11
	C-2	92706-06030	B-2	93102-17148	C-6
91316-06025	B-2	92901-04100	B-12	93102-20108	C-4
	B-8	92901-05600	D-5	93102-20281	D-11
	C-2	92901-06100	B-14	93102-25226	C-8
91316-06030	B-4		C-13	93102-30072	D-13
	B-7		C-15	93106-22019	D-2
	B-15		D-5	93108-35004	D-2
	C-2		D-7	93210-07135	B-9
	B-9		F-3		B-15
91316-06035	C-2	92901-06200	C-6	93210-08521	B-7
	D-5		D-7	93210-09350	B-9
91316-06040	D-15		E-2	93210-10197	B-9
	C-15		E-3	93210-13361	B-9
91316-06045	B-15		B-8		C-2
91316-06050	B-2	92901-06600	C-5	93210-14104	E-8
	C-2		E-2	93210-14369	B-2
	B-2		E-3		C-2
91316-06055	B-15		D-8	93210-14579	B-10
91316-06060	B-9		D-8	93210-15171	B-10
91316-06080	B-9	92901-08100	C-12	93210-19522	B-2
91316-06125	B-2	92901-08600	D-5	93210-21190	C-15
91401-16015	E-4	92901-10100	D-12	93210-22298	B-9
91401-20015	E-3		D-12	93210-32172	B-2
91401-25012	E-3		D-4	93210-36510	C-2
	E-4		D-3	93210-36549	B-11
	E-3	92901-10200	C-14	93210-62523	B-2
	E-3	92901-14600	C-14	93210-64297	B-9
	D-4	92901-16200	E-6	93210-98473	B-4
	D-14	92902-03200	E-10	93306-00426	C-8
	C-4	92902-06100	E-12	93306-00431	C-8
91701-06022	C-4		B-11	93306-20205	D-11
91701-08038	B-5	92902-06600	B-4	93306-20310	D-13
91810-03014	B-2	92906-05600	B-4	93306-20316	D-13
91810-05018	B-4	92906-06100	B-15	93306-30423	D-13
91810-18016	B-4		C-2	93306-30525	B-5
	B-15		B-15	93306-30535	C-8
	C-2		C-2	93306-30540	C-8
91830-22016	B-15		D-15	93306-30702	B-5
	C-2		E-5		
	B-15		E-11		
91830-24016	B-14				
92501-06008	B-14				
92501-06012	C-2				
	C-12	92906-06200	E-11		

NUMERICAL INDEX

PART NO.	GRID NO.	PART NO.	GRID NO.	PART NO.	GRID NO.
93310-634K2	B- 5	95301-10700	D- 5	97702-40530	E- 7
93313-92513	B- 6	95302-06600	C-14	97706-40506	B-11
93315-11720	C- 6		E-10	98501-03008	D- 9
93315-31732	D- 2	95302-08600	C-14	98501-04014	B-12
93316-00501	C-10	95311-06700	C- 5	98501-05010	B-12
93317-11020	C- 6	95311-08600	D- 8	98501-05018	D- 5
93317-32231	D- 2	95601-06100	E-11	98501-05020	E-11
93332-00008	D- 5	95606-06100	E-11	98503-04010	B-13
93332-00023	D- 5	95611-06620	B- 2		E- 7
93410-10025	C- 5	95701-06100	D- 2	98506-05008	D-15
93410-11002	B- 9		E-12	98506-05012	E- 9
93410-15005	C- 4	95702-12100	E- 7	98506-05016	B-11
93410-20009	C- 4	95706-06100	E- 8	98506-05030	E-11
	C- 8	95801-06010	E-13	98506-05035	E-11
93410-20038	C- 4	95801-06012	B-11	98706-04012	D-15
93430-09035	C-11		D- 9	98901-04006	B-13
93430-10016	C-11	95801-06050	D- 2	98906-06010	B-14
93440-12052	B- 2	95801-08012	C-15		F- 3
93440-25019	C- 8	95802-08012	C-15		
93440-48079	D- 4	95806-06016	D-10		
93450-24028	B- 5	95806-06030	C-14		
93503-08007	B- 9	95806-06035	E- 8		
93507-32009	C- 4	95806-08030	C-14		
93515-32029	C- 7	95811-08012	B-14		
93604-10011	C-10	95811-10100	C-12		
93605-10090	B- 5	95816-08045	B-14		
93608-33046	C-11		F- 3		
93700-06004	D- 3	95821-08020	B-14		
93700-06005	D- 3	95821-10025	E- 3		
94130-211E8	D-11		E- 4		
94146-181E9	D-13	95826-08035	D- 5		
94227-21101	D-11	95826-08040	D- 5		
94240-18098	D-13	97301-06008	F- 3		
94327-21071	D-11	97301-06016	C-15		
94340-18069	D-13		E-12		
94416-21367	D-11	97302-06025	E-10		
94425-18371	D-13	97306-06020	B-10		
94580-50102	D-14	97306-06022	E-11		
94590-27126	B- 8	97306-06025	C-12		
94680-40011	D-14		E- 5		
94701-00189	B- 2	97306-08016	C-12		
	E-15	97311-08030	C- 4		
94701-00208	E-15	97311-10080	C-12		
95301-05600	D- 5	97321-06014	C- 8		
95301-06600	C- 6	97321-06016	B- 8		
	D- 7		C- 4		
	E- 3	97322-06010	C- 9		
95301-06700	E- 2	97326-06020	C-11		
		97326-06025	D-15		

PARTS NAME INDEX

DESCRIPTION	GRID NO.	DESCRIPTION	GRID NO.	DESCRIPTION	GRID NO.
ABSORBER 3	B- 2	BOLT	B- 3	BOLT, stud	B- 2
*	B- 4	*	B- 4	*	B-15
AIR CLEANER CASE ASSY	B-11	*	B- 7	*	D-13
AIR VALVE COMP.	D- 6	*	B- 8	BOLT, union	D-15
*	D- 7	*	B- 9	BOLT, washer based	B- 4
ARM, relay	D- 2	*	B-10	*	B- 8
ARM, valve rocker	B- 7	*	B-11	*	C-12
ARM, valve rocker 2	B- 7	*	B-15	*	D- 5
ARM, valve rocker 3	B- 7	*	C- 2	BOLT, with washer	C-14
ARM, valve rocker 4	B- 7	*	C- 4	*	D- 2
AXLE, main(12T)	C- 8	*	C- 8	*	D-10
AXLE, wheel	D-11	*	C- 9	BOOT	D- 7
*	D-14	*	C- 9	*	E- 2
BACK MIRROR ASSY (L.H)	D-15	*	C-11	BOOT 2	D-11
*	E-15	*	C-12	BOOT, cable	D-15
BACK MIRROR ASSY (R.H)	D-15	*	C-13	BOOT, caliper	D-11
*	E-15	*	C-15	BOOT, master cylinder	D-15
BALANCER, wheel	D-11	*	D- 2	BOOT, rubber	D- 3
*	D-13	*	D- 4	BOSS, buffer	B- 5
BALL	B- 9	*	D- 5	BOSS, clutch	C- 6
*	C- 4	*	D-11	BOSS, kick crank	C- 4
*	C- 7	*	D-12	BOX COMP.	C-14
BAND	D- 7	*	D-13	BOX, battery	C-15
*	D- 9	*	D-15	BRACKET 1	E- 4
BAND, battery	E-12	*	E- 3	BRACKET 2	E- 4
BAND, rim (2.75-21)	D-11	*	E- 4	BRACKET, decompression	B- 8
BAND, rim (4.00-18)	D-13	*	E- 5	BRACKET, footrest 1	E- 3
BAND, seat	D-10	*	E-10	BRACKET, footrest 2	E- 3
BAND, switch cord	E-11	*	E-11	BRACKET, license	C-14
*	E-12	*	E-12	BRACKET, master cylinder	D-15
BAR, shift fork Guide 1	C-10	BOLT, caP	D- 6	BRACKET, meter	E- 8
BAR, shift fork Guide 2	C-10	*	D- 7	BRACKET, reflector 1	E-10
BATTERY ASSY (12N14-3A)	E-12	BOLT, flange	B-11	BRACKET, stop switch	C-12
BEARING	C- 8	*	B-14	BRAKE PAD KIT, front	D-11
*	D- 5	*	C-12	BRAKE SHOE COMP.	D-13
*	D-13	*	C-14	BREED SCREW KIT	D-11
BEARING (B6202)	D-11	*	C-15	BULB (12V 3.4W)	E- 8
BEARING (B6203)	D-13	*	D- 2	*	E- 9
BEARING (B6203RS)	D-13	*	D- 5	BULB (12V-27/8W)	E-10
BEARING (B6305)	B- 5	*	D- 9	BULB (12V-27W)	E- 7
BEARING (B6307)	B- 5	*	D-10	BULB (12V-60/55W)	E- 9
BEARING, cylindrical	B- 5	*	E- 3	BUMP, stop	D- 4
*	B- 6	*	E- 4	BUSH	C-13
*	C- 6	*	E- 8	*	D- 2
*	C-10	*	E-13	*	D- 3
*	D- 2	*	F- 3	BUSH 1	D- 2
BODY, cowling	E- 5	BOLT, hexagon socket head	D- 6	BUSH 2	D- 2
BOLT	B- 2	*	D- 7	BUSH, rear shock absorber	D- 4
				BUSH, shock absorber lower	D- 4

## PARTS NAME INDEX

DESCRIPTION	GRID NO.	DESCRIPTION	GRID NO.	DESCRIPTION	GRID NO.
BUSH, solid	D-2	COLLAR	C-12	DAMPER 2	B-11
*	E-4	*	C-13	*	C-12
C.D.I. UNIT ASSY	E-12	*	C-14	*	E-8
CABLE CONNECTOR SET	B-12	*	C-15	DAMPER, locating 1	D-9
CABLE, clutch	D-15	*	D-2	DAMPER, locating 2	D-9
CABLE, decompression	B-3	*	D-3	DAMPER, locating 3	D-9
CABLE, starter 1	D-15	*	D-11	DAMPER, locating 4	D-9
CABLE, throttle 1	D-15	*	E-2	DAMPER, rubber 1	C-12
CABLE, throttle 2	D-15	*	E-5	DECOMP. LEVER ASSY	C-4
CALIPER ASSY (LEFT)	D-11	COLLAR, wheel	D-13	DIAPHRAGM SET, 1	B-13
CAM, decompression	B-2	CORD, taillight	E-10	DIAPHRAGM, reservoir	D-15
CAMSHAFT	D-13	COTTER, valve	B-7	DISC, brake (RIGHT)	D-11
CAMSHAFT ASSY 1	B-8	COVER 1	B-13	DRIVE AXLE ASSY	C-8
CAP	D-3	COVER, ball race 2	D-5	DUCT	B-11
*	E-7	COVER, cap	C-2	ELEMENT ASSY, oil cleaner	B-9
CAP ASSY	D-9	COVER, cap 2	B-9	ELEMENT, air cleaner	B-11
CAP, cleaner case 1	B-11	COVER, crankcase 1	C-2	ELEMENT, air cleaner 2	B-11
CAP, reservoir	D-15	COVER, crankcase 2	C-2	EMBLEM	E-5
CARBURETOR ASSY 1	B-12	COVER, crankcase 3	C-2	EMBLEM 1	C-15
CASE, chain	D-3	COVER, cylinder head side 3	B-2	*	D-9
CHAIN	B-8	COVER, hub dust	D-11	EMBLEM, rear arm	D-2
*	D-14	COVER, oil cooler	B-10	FENDER, rear	C-14
CIRCLIP	B-2	COVER, oil element	B-9	FITTING PLATE, bulb	E-9
*	B-5	COVER, rear footrest	E-4	FLANGE, spacer	D-13
*	B-9	COVER, seat	D-10	FLAP	B-11
*	C-4	COVER, shift pedal	C-11	FLASHER RELAY ASSY	E-13
*	C-5	COVER, side 1	C-15	FLOAT	B-12
*	C-8	COVER, side 2	C-15	FOOTREST 1	E-3
*	C-11	COVER, socket	E-9	FOOTREST 2	E-3
*	D-4	COVER, spring	C-4	FOOTREST, rear 1	E-4
CIRCUIT BREAKER ASSY	E-12	COVER, starter	E-11	FORK UNIT ASSY	D-6
CLAMP	B-10	COVER, thrust 1	D-2	FORK UNIT ASSY 2	D-6
*	C-2	COVER, thrust 2	D-2	FORK, shift 1	C-10
*	D-5	*	D-3	FORK, shift 2	C-10
CLAMP, hose	B-11	CRANK 1	B-5	FORK, shift 3	C-10
CLIP	B-11	CRANK 2	B-5	FRAME COMP.	C-12
*	B-13	CRANKCASE ASSY	B-15	FRONT FENDER COMP.	C-14
*	B-15	CRANKSHAFT ASSY	B-5	FRONT FLASHER LIGHT ASSY 1	E-7
*	C-15	CROWN, handle	D-5	FRONT FORK ASSY (L.H.)	D-6
*	D-5	CYLINDER	B-4	FRONT FORK ASSY (R.H.)	D-6
*	D-9	CYLINDER COMP., front fork	D-6	FRONT STOP SWITCH ASSY	E-11
*	D-15	*	D-7	FUEL COCK ASSY 1	D-9
*	E-8	CYLINDER HEAD ASSY	B-2	FUEL TANK COMP.	D-9
CLIP, cover fitting	E-9	CYLINDER KIT, master	D-15	GASKET	B-3
CLUTCH, hub	D-13	DAMPER	D-13	*	B-4
COLLAR	B-10	*	E-8	*	B-9
*	B-15	DAMPER SUB ASSY	D-4	*	B-12
*	C-10	DAMPER 1	B-11	*	B-13
				*	B-15

PARTS NAME INDEX

DESCRIPTION	GRID NO.	DESCRIPTION	GRID NO.	DESCRIPTION	GRID NO.
GASKET	C- 6	GUIDE, cable	D- 5	LEVER 1	E-11
*	C-15	GUIDE, intake valve	B- 2	LEVER 2	E-11
*	D- 6	GUIDE, ratchet wheel	C- 4	LEVER, cable	C- 5
*	D- 7	GUIDE, spring 1	D- 4	LEVER, camshaft	D-13
*	D- 9	GUIDE, spring 2	D- 4	LEVER, starter	B-13
*	E-13	GUIDE, stopper 1	B- 8	*	E-11
GASKET, crankcase cover	C- 2	GUIDE, stopper 2	B- 8	LID	C-14
GASKET, crankcase cover 3	C- 2	HANDLEBAR	D-15	MAIN AXLE COMP.	C- 8
GASKET, cylinder	B- 4	HEADLIGHT UNIT ASSY	E- 9	MAIN SWITCH STEERING LOCK	E-12
GASKET, cylinder head 1	B- 4	HELMET HANGER ASSY	D-10	MASTER CYLINDER ASSY	D-15
GASKET, exhaust pipe	B-14	HOLDER, axle	D- 7	METAL, slide 2	D- 6
GASKET, flasher lens	E- 7	HOLDER, cable 1	D- 5	*	D- 7
GASKET, float chamber	B-12	HOLDER, clutch cable	C- 2	MUFFLER 1	B-14
GASKET, lens	E-10	HOLDER, damper	D- 5	*	F- 3
GASKET, muffler	B-14	HOLDER, handle lower	D- 5	NEEDLE SET	B-12
*	F- 3	HOLDER, handle upper	D- 5	NEEDLE VALVE SET	B-12
GASKET, tensioner case	B- 8	HOLDER, lever 1	E-11	NET, filter	C-15
GAUGE, level	C-15	HOLDER, oil cooler 1	B-10	NEUTRAL SWITCH ASSY	E-13
GEAR UNIT ASSY	D-11	HOLDER, sprocket	C- 8	NIPPLE, grease	D- 3
GEAR UNIT ASSY, tachometer drive	B- 2	HORN	E-13	NOZZLE, main	B-12
GEAR, balance wt 44t	B- 5	HOSE	C-15	NOZZLE, main 2	B-12
GEAR, drive (44T)	B- 5	*	E-12	NUT	B- 4
GEAR, kick 35t	C- 4	HOSE, brake 1	D-15	*	B- 5
GEAR, Primary drive(31T)	C- 6	HOSE, oil cooler	B-10	*	B- 6
GEAR, Pump driven	B- 9	HOSE, oil 1	B- 9	*	B- 7
GEAR, sprocket idle 31t	C- 4	HOSE, oil 2	B-10	*	B-13
GEAR, 1st wheel(31T)	C- 8	HUB, front	D-11	*	B-14
GEAR, 2nd Pinion 17t	C- 8	HUB, rear	D-13	*	C- 5
GEAR, 2nd wheel 27t	C- 8	IGNITION COIL ASSY	E-12	*	C- 6
GEAR, 3rd Pinion 20t	C- 8	INNER TUBE COMP.1	D- 6	*	C-14
GEAR, 3rd wheel 24t	C- 8	INSULATOR, side cover	C-15	*	D- 4
GEAR, 4th Pinion 22t	C- 8	JET, main (#126)	B-12	*	D- 5
GEAR, 4th wheel 21t	C- 8	*	B-13	*	D- 7
GEAR, 5th Pinion	C- 8	JET, Pilot (# 48)	B-12	*	D- 8
GEAR, 5th wheel 21t	C- 8	JOINT	B-11	*	D-13
GRAPHIC SET	D- 9	*	C- 6	*	D-15
GRIP (L.H.)	D-15	JOINT, air cleaner 1	B-11	*	E- 2
GRIP (R.H.)	D-15	JOINT, carburetor 1	B-11	*	E- 3
GROMMET	B-10	JOINT, carburetor 2	B-11	*	E-10
*	C-12	JOINT, chain	D-14	*	E-11
*	C-15	KEY, straight	B- 6	NUT, adjusting	E- 9
*	D-11	*	C- 6	NUT, castle	D-11
*	D-14	KEY, woodruff	B- 5	*	D-14
*	E- 5	KICK AXLE ASSY	C- 4	NUT, crown	B- 4
GUARD, brush 1	E- 2	KICK CRANK ASSY	C- 4	NUT, flange	D- 2
GUARD, brush 2	E- 2	LENS, flasher	E- 7	*	E- 7
GUARD, chain	D- 2	LENS, headlight	E- 9	*	E- 8
GUIDE	B-11	LENS, taillight	E-10	*	E-12

PARTS NAME INDEX

DESCRIPTION	GRID NO.	DESCRIPTION	GRID NO.	DESCRIPTION	GRID NO.
NUT, self-locking	C-12	PIN, crank 1	B- 5	PLUG, blind	B-11
*	D- 2	PIN, dowel	B- 2	PLUG, drain	D- 6
*	D- 3	*	B- 4	PLUG, screw	B-12
*	D- 4	*	B- 5	PLUG, sPark (NGK DR7ES)	E-15
*	E- 4	*	B-15	PLUG, sPark (NGK D7EA)	B- 2
NUT, u	E-11	*	C- 2	*	E-15
NUT, wing	E- 3	*	C-10	PLUG, straight screw	B- 2
O-RING	B- 2	*	C-11	*	C- 2
*	B- 4	PIN, float	B-12	PLUG, taPer	C- 4
*	B- 7	PIN, Piston	B- 5	PLUG, viewer	B- 2
*	B- 9	PIPE	B-12	PRIMARY DRIVEN GEAR COMP.(74T)	C- 6
*	B-10	*	B-13	PROTECTOR, exhaust Pipe	B-14
*	B-11	PIPE, breather 1	B-15	*	F- 3
*	B-12	PIPE, exhaust 1	B-14	PROTECTOR, muffler 2	B-14
*	B-15	*	F- 3	*	F- 3
*	C- 2	PIPE, fuel 1	D- 9	PROTECTOR	B-11
*	C-15	PIPE, outlet	B-14	PROTECTOR, chain	D- 2
*	D- 6	*	F- 3	PROTECTOR, engine	C-12
*	D- 7	PISTON (STD)	B- 5	PULLER, chain 1	D-14
*	E- 8	PISTON (0.50MM O/S)	B- 5	PULLER, chain 2	D-14
OIL COOLER ASSY	B-10	PISTON (1.00MM O/S)	B- 5	PUSH LEVER COMP.	C- 6
OIL PUMP ASSY	B- 9	PISTON ASSY, caliPer	D-11	REAR ARM COMP.	D- 2
OIL SEAL	B- 2	PISTON RING SET (STD)	B- 5		
*	B- 3	PISTON RING SET (2ND O/S)	B- 5	RECTIFIER & REGULATOR ASSY	E-12
*	B- 6	PISTON RING SET (4TH O/S)	B- 5	REFLECTOR, rear 1	E-10
*	C- 2	PISTON, front fork	D- 6	RETAINER, valve sPring	B- 7
*	C- 4	*	D- 7	RIM (1.60-21)	D-11
*	C- 6	PLATE	B-10	RIM (2.50-18)	D-13
*	C- 8	*	B-13	RIM, headlight	E- 9
*	C-11	*	C-12	RING, leaf	D-15
*	D- 2	PLATE, bearing cover	B-15	RING, Piston	D- 6
*	D- 6	PLATE, brake shoe	D-13	*	D- 7
*	D- 7	PLATE, breather 2	B- 6	RING, snaP	D- 6
*	D-11	PLATE, cleaner case fitting	C-15	*	D- 7
*	D-13	PLATE, clutch 2	C- 6	RING, stoP	E- 8
OIL TANK ASSY	C-15	PLATE, cover	C- 8	RIVET, blind	C-12
PEDAL, brake	E- 3	PLATE, decomp	C- 3	*	C-14
PILOT SCREW SET	B-12	PLATE, element fitting	B-11	*	D- 3
PIN	C- 6	PLATE, friction	C- 6	*	E-10
*	E- 3	PLATE, friction 2	C- 6	ROD, brake	E- 3
*	D- 4	PLATE, indicator	D-13	ROD, connecting	B- 5
*	E- 3	PLATE, indicator 2	D-14	ROD, connecting 1	D- 2
*	E- 4	PLATE, Pressure 1	C- 6	ROD, Push 1	C- 6
PIN, cotter	D- 4	PLATE, Push	C- 6	ROD, Push 2	C- 7
*	D-11			ROTOR ASSY	E- 6
*	D-14	PLATE, thrust 1	C- 6	SCREW	B- 9
*	E- 3	PLUG	B- 9	*	B-13
*	E- 4	PLUG CAP ASSY	E-12	*	C- 6

## PARTS NAME INDEX

DESCRIPTION	GRID NO.	DESCRIPTION	GRID NO.	DESCRIPTION	GRID NO.
SCREW	D-9	SEAT, check ball	B-9	SPRING, reflector	E-9
*	E-11	SEAT, sPring lower	D-4	SPRING, screw	E-9
SCREW, bind	B-13	SEAT, sPring upper	D-4	SPRING, tension	D-13
*	B-14	*	D-6	*	E-4
*	F-3	*	D-7	SPRING, throttle valve	B-13
SCREW, countersunk	C-4	SEAT, valve sPring	B-7	SPRING, torsion	B-3
*	C-10	SEGMENT	C-10	*	C-4
SCREW, flat head	B-2	SEMI-DOUBLE SEAT ASSY	D-10	*	C-5
*	B-15	SHAFT, Pivot	D-3	*	C-7
*	D-10	SHAFT, rocker	B-7	*	C-10
*	D-15	SHAFT, rocker 2	B-7	*	C-11
SCREW, hexagon	E-11	SHAFT, rocker 3	B-7	*	E-3
SCREW, lens fitting	E-10	SHIFT CAM ASSY	C-10	SPRING, valve inner	B-7
SCREW, Pan head	B-9	SHIFT LEVER ASSY	C-11	SPRING, valve outer	B-7
*	B-11	SHIFT PEDAL ASSY	C-11	SPROCKET 46T	B-8
*	B-12	SHIFT SHAFT ASSY	C-11	SPROCKET, drive (15T)	C-8
*	B-13	SHIFT SHAFT ASSY 2	C-11	SPROCKET, driven (39T)	D-13
*	B-14	SHIM	C-8	STAND, side	E-4
*	C-2	SHIM, callPer	D-11	STARTER SET	B-13
*	C-12	SHIM, kick shaft	C-2	STATOR ASSY	E-6
*	C-14	SHOCK ABSORBER ASSY, rear	D-4	STAY	D-5
*	D-3	SOCKET CORD ASSY	E-8	STAY UNIT	E-12
*	D-5	SOCKET, meter	E-8	STAY, engine 2	C-12
*	D-9	SOCKET, Pilot light	E-9	STAY, engine 3	C-12
*	D-15	SPACER	D-11	STAY, flasher	E-7
*	E-2	SPACER, bead	D-13	STAY, flasher 1	E-7
*	E-6	SPACER, bearing	D-13	STAY, flasher 2	E-7
*	E-7	SPACER, oil lock	D-6	STOP SCREW SET	B-13
*	E-9	*	D-7	STOP SWITCH ASSY	E-13
*	E-11	SPEEDOMETER ASSY	E-8	STOPPER	C-4
*	E-12	SPEEDOMETER CABLE ASSY	E-8	STOPPER LEVER ASSY	C-10
SCREW, tapping	B-11	SPOKE SET, front	D-11	STOPPER, main stand	C-12
*	B-14	SPOKE SET, rear	D-13	STRAINER COMP.	B-9
*	E-7	SPRING	B-12	SUB CARRIER ASSY	D-10
*	F-3	*	B-13	SUPPORT, boot	D-3
SCREW, valve adjusting	B-7	*	D-4	SUPPORT, bump stop	D-4
SCREW, with washer	C-6	*	D-6	SUPPORT, Pad	D-11
*	C-10	SPRING, clutch boss	C-6	SWITCH, handle 1	E-11
*	E-9	SPRING, compression	B-5	SWITCH, handle 4	E-11
SEAL	B-13	*	B-9	TACHOMETER ASSY	E-8
SEAL 1	C-12	*	C-4	TACHOMETER CABLE ASSY	E-8
*	C-14	*	C-6	TAILLIGHT ASSY	E-10
SEAL, cock	D-9	*	E-3	TENSIONER	C-13
SEAL, dust	D-6	*	E-11	TENSIONER ASSY, cam chain	B-8
*	D-7	SPRING, front fork	D-6	THROTTLE LEVER COMP	B-13
*	D-2	*	D-7	THROTTLE SCREW SET	B-12
SEAL, Guard	B-9	SPRING, rebound	D-6	TIRE (3.00-21)	D-11
SEAL, oil strainer	B-7	*	D-7	TIRE (4.60-18)	D-13
SEAL, valve stem	E-12				
SEAT, battery					

PARTS NAME INDEX

DESCRIPTION	GRID NO.	DESCRIPTION	GRID NO.	DESCRIPTION	GRID NO.
TOOL KIT .....	C-15	WASHER, Plate .....	D- 9		
TUBE (2.75-21) .....	D-11	*	D-11		
TUBE (4.00-18) .....	D-13	*	D-15		
TUBE, throttle Guide .....	D-15	*	E- 2		
UNDER BRACKET COMP. ....	D- 7	*	E- 3		
UPPER BRACKET SUB ASSY .....	D- 4	*	E- 4		
VALVE, exhaust .....	B- 7	*	E- 5		
VALVE, intake .....	B- 7	*	E- 8		
VALVE, throttle .....	B-12	*	E-10		
WASHER .....	B- 5	*	E-11		
*	B-10	*	E-12		
*	C- 8				
*	C-14	WASHER, Plate (1.0T) .....	C- 4		
*	D- 4	WASHER, Plate (1.95T) .....	D- 2		
*	E-11	WASHER, Protector .....	B-14		
*	E-12	*	F- 3		
WASHER (12T) .....	D-13	WASHER, sPecial .....	E- 9		
WASHER, bearing cover .....	B- 5	WASHER, sPring .....	B-10		
WASHER, lock .....	B- 6	*	B-12		
*	C- 4	*	B-13		
*	C- 6	*	B-14		
WASHER, Plain .....	B-12	*	C-12		
*	C- 6	*	C-13		
*	D- 3	*	C-14		
*	D- 7	*	C-15		
*	D-12	*	D- 3		
*	E- 2	*	D- 5		
*	E- 3	*	D- 7		
*	E-11	*	D- 8		
WASHER, Plate .....	B- 2	*	D-12		
*	B- 4	*	D-15		
*	B- 5	*	E- 5		
*	B- 8	*	E- 6		
*	B-11	*	E-10		
*	B-14	*	E-11		
*	C- 4	*	F- 3		
*	C- 5	WASHER, wave .....	B- 7		
*	C- 7	*	B-14		
*	C- 8	*	D- 4		
*	C-11	*	F- 3		
*	C-12	WEIGHT 1 .....	B- 5		
*	C-13	WHEEL, ratchet .....	C- 4		
*	C-14	WIRE HARNESS ASSY .....	E-12		
*	D- 2	WIRE, Plus lead .....	E-12		
*	D- 3				
*	D- 4				
*	D- 5				
*	D- 8				