

PARTS CATALOGUE

YW100S (4VPC)

YAMAHA
GENUINE
Parts & Accessories

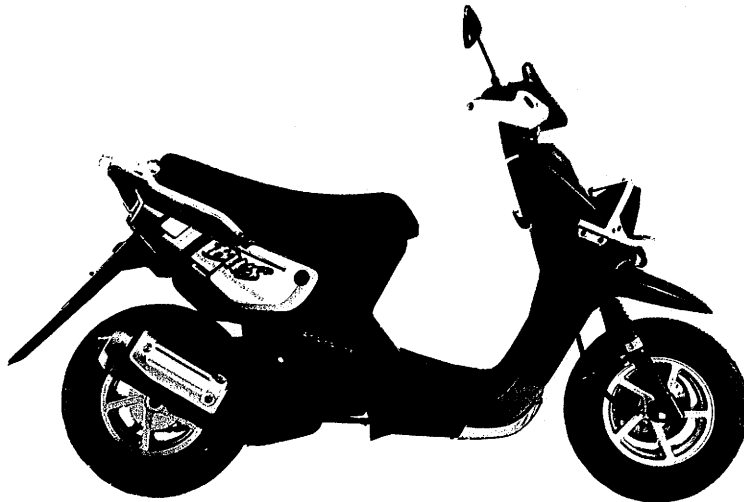
194VP-2**E1



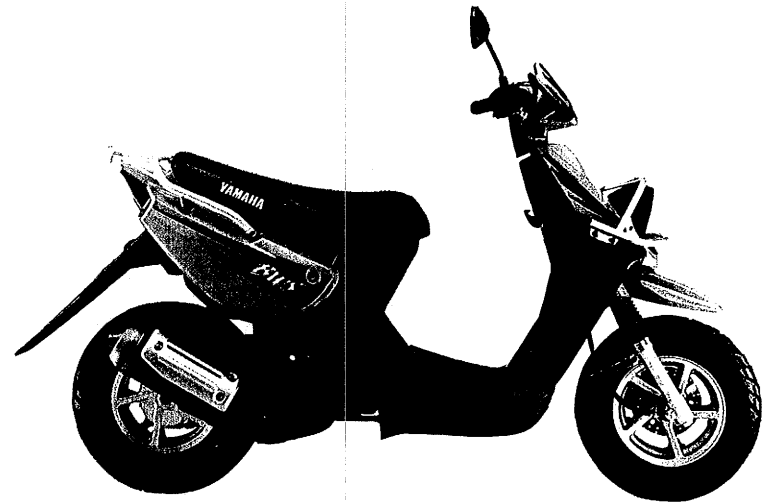
Picture for reference only. please see the actual motorcycle.



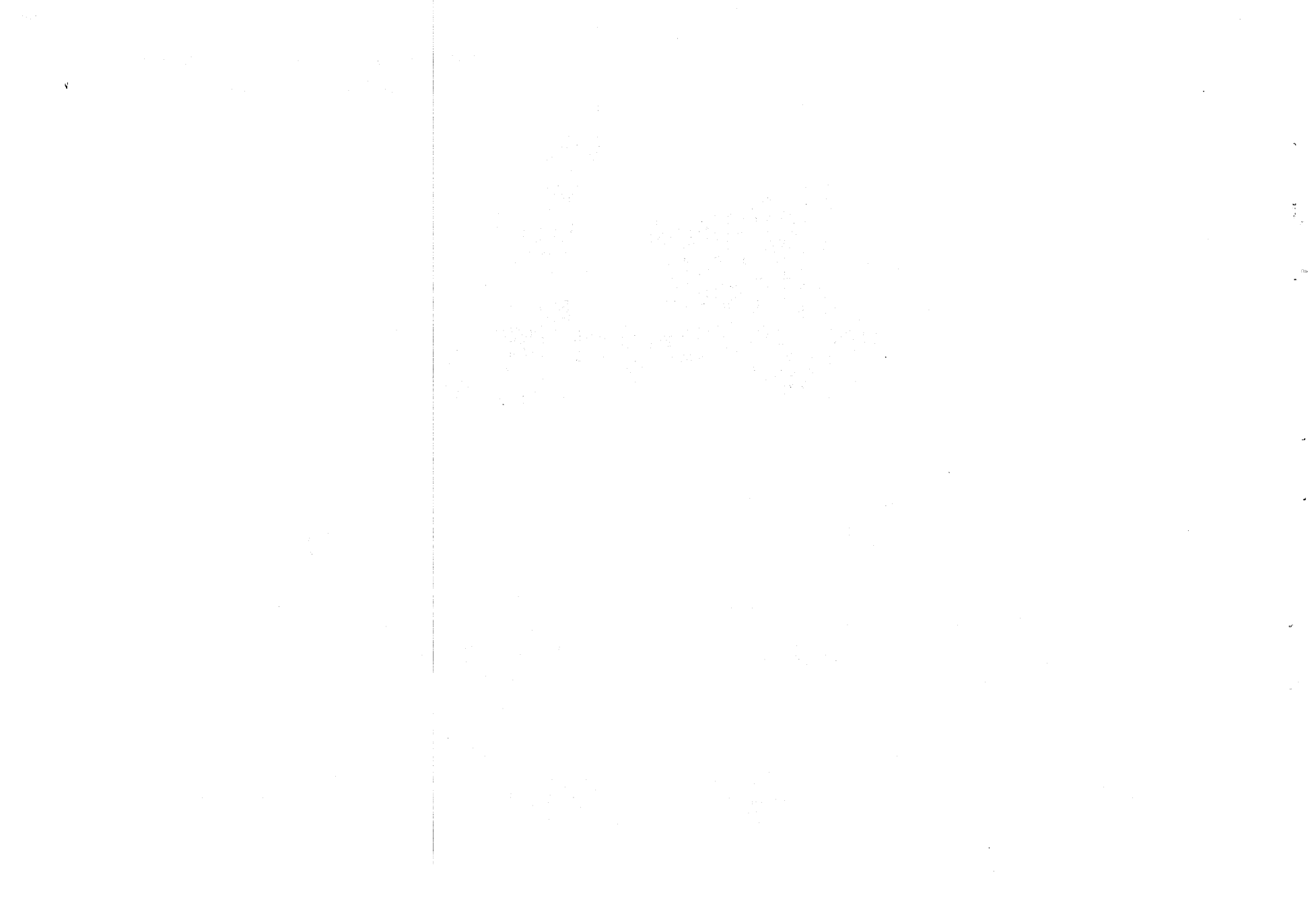
BLACK 2



DEEP PURPLISH
BLUE METALLIC A



VIVID YELLOW SOLID 2



FOREWORD

This Parts Catalogue is related to the parts for the model(s) in the below frame. When you are ordering replacement parts, please refer to this Parts Catalogue and quote both part numbers and part names correctly.

YW100S (4VPC)

1. Modifications or additions which have been made after issue of the Parts Catalogue will be announced in the Yamaha Parts News. It is advisable that you make necessary corrections to the Parts Catalogue according to the Yamaha Parts News.

2. Abbreviations

The Following abbreviations are used in this Parts Catalogue.

- "UR" Use specified parts number.
- "UN" Use as many as needed.
- "AP" Alternate Parts
- "LM" Local Made (Parts need to be ordered locally)
- "F#" Frame No. (Applicable machine No.)

3. Parts, which are to be supplied in an assembly, are listed with a dot(.) in front of the part name as shown below.

EXAMPLE

CARBURETOR ASSY
 .JET, PILOT
 .NOZZLE, MAIN

4. Number of component for assembly

The numeral appearing to the right of each component part indicates the quantity of parts for each assembly unit.

EXAMPLE

PART NO.	DESCRIPTION	Q'TY	REMARKS
2F5-83310-60	FRONT FLASHER LIGHT ASSY	2	
115-83311-60	.BULB (6V-18W)	1	
1M1-83309-60	.REFLECTOR	1	

5. Applicable colors of graphics are represented in the "REMARKS" as shown below.

PART NO.	DESCRIPTION	Q'TY	REMARKS
2N4-24110-00-X5	FUEL TANK COMP.	2	MXR
3J1-24240-10	.GRAPHIC, FUEL TANK	1	for MXR

6. Applicable Serial No.

① Engine Serial No.

② Frame Serial No.

4VPC:
 4VP-C00101~

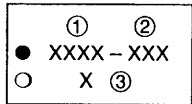
4VPC:
 4VP-C00101

7. Note that the illustrations for reference in funding parts numbers, not to be used for assembling. When assembling, please use the applicable service manual.
8. The asterisk (*) before a reference number indicates modification items after the first edition.

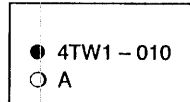
MODEL LABEL

(1) A label called "Model Label" is affixed in the location as indicated in (3) below. When using this parts catalogue, please be sure to cross-refer the "model code – production code No." in the catalogue to the "model code – production code No." indicated on the Model Label affixed onto the product concerned.

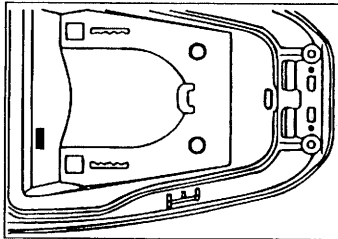
(2) "Model Label " Indication



① Model Type Code
② Production Code No.
③ Colouring Type



(3) Model Label Affixing Location



(4) Model Code – Production Code Number of Model Listed in This Parts Catalog

Model code	Production code No.	Country (destination)	Model code	Production code No.	Country (destination)
4VPC					

(5) Colouring Information

Model code	Colouring type code	Colour code	Colour Name	Abbreviation
4VPC	A	004B	BLACK 2	BL2
	B	0564	DEEP PURPLISH BLUE METALLIC A	DPBMC
	C	0657	VIVID-YELLOW-SOLID 2	VYS 2

CONTENTS

ENGINE

FIG1	CYLINDER.....	1
FIG2	CRANKSHAFT. PISTON.....	2
FIG3	AIR SHROUD. FAN	3
FIG4	OIL PUMP	4
FIG5	INTAKE	5
FIG6	CARBURETOR.....	6
FIG7	EXHAUST	7
FIG8	CRANKCASE	8~9
FIG9	STARTER	10
FIG10	CLUTCH	11~12
FIG11	TRANSMISSION	13

CHASSIS

FIG12	FRAME	14
FIG13	FRONT FENDER.....	15
FIG14	SIDE COVER.....	16
FIG15	OIL TANK	17
FIG16	REAR SUSPENTION	18
FIG17	FRONT FORK.....	19 ~ 20
FIG18	FUEL TANK.....	21
FIG19	SEAT. CARRIER	22
FIG20	FRONT WHEEL.....	23
FIG21	FRONT BRAKE CALIPER	24
FIG22	REAR WHEEL	25
FIG23	STEERING HANDLE. CABLE	26

FIG24	FRONT MASTER CYLINDER	27
FIG25	STAND. FOOTREST	28
FIG26	LEG SHIELD.....	29
FIG27	COWLING 1	30
FIG28	GENERATOR	31
FIG29	STARTING MOTOR.....	32
FIG30	FLASHER LIGHT	33
FIG31	METER	34
FIG32	HEADLIGHT	35
FIG33	TAILLIGHT	36
FIG34	HANDLE SWITCH. LEVER	37
FIG35	ELECTRICAL 1	38
FIG36	ELECTRICAL 2	39

INDEX

NUMERICAL INDEX	40~43
-----------------------	-------

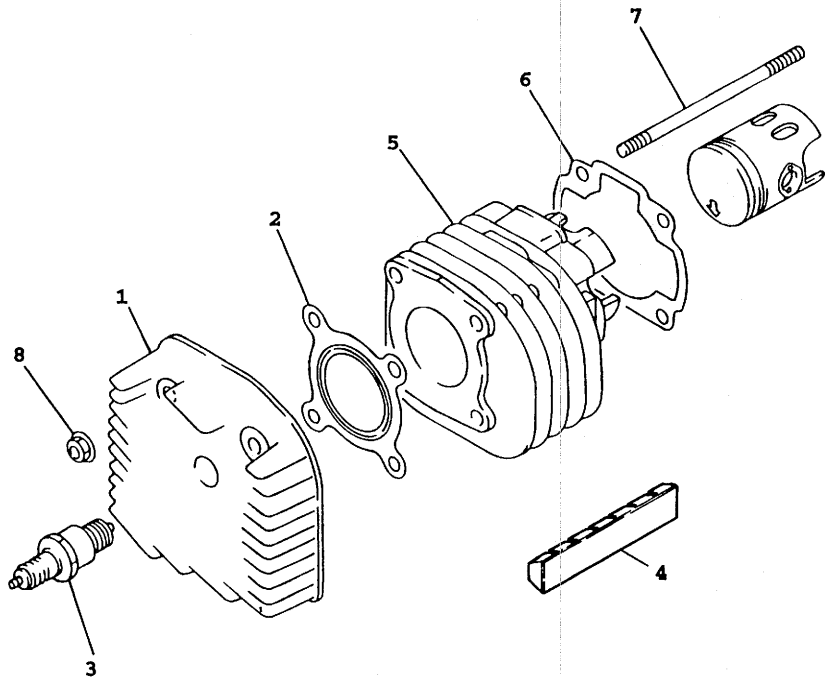


FIG. 1 CYLINDER

NO.	PART NO.	DESCRIPTION	Q'TY	REMARKS
1	4VP-E1111-00	HEAD, CYLINDER 1	1	
2	4VP-E1181-00	GASKET, CYLINDER HEAD 1	1	
3	94700-00825 94700-00825	PLUG, SPARK	1	
4	4VP-E1162-00	ABSORBER 2	1	
5	4VP-E1311-00	CYLINDER 1	1	
6	5FA-E1351-00	GASKET, CYLINDER	1	
7	90116-07834	BOLT, STUD	4	
8	90179-07381	NUT	4	



4VP5200-7010

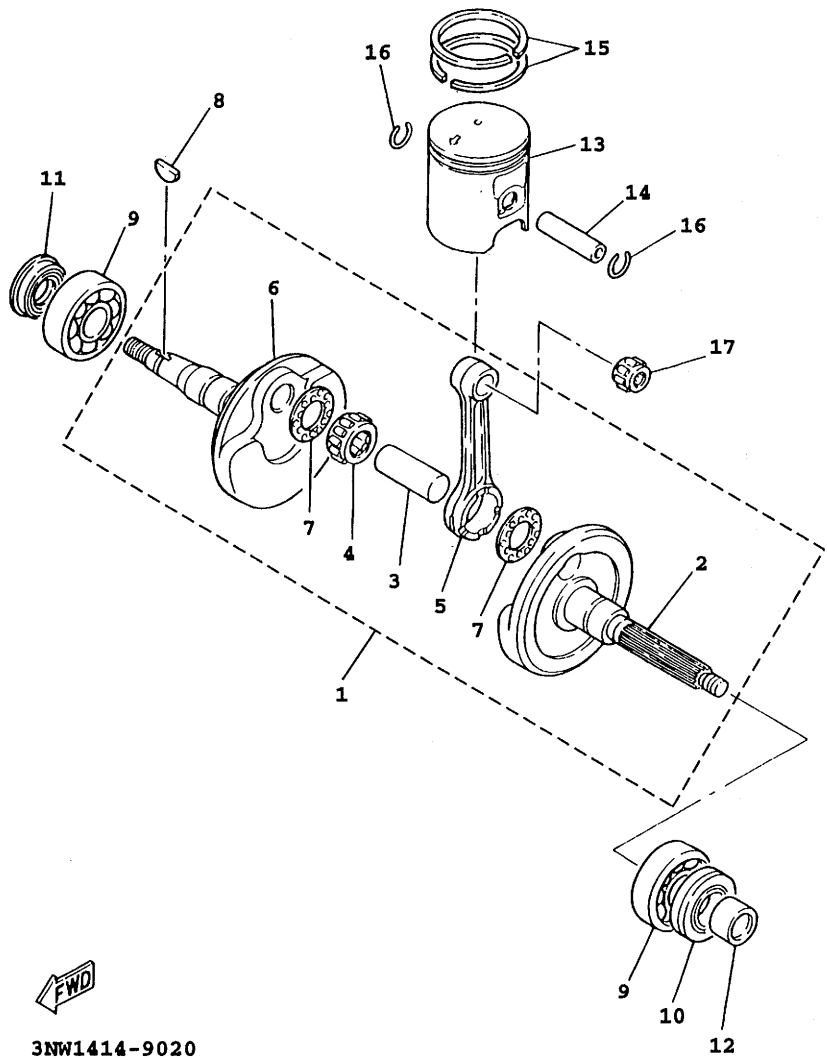


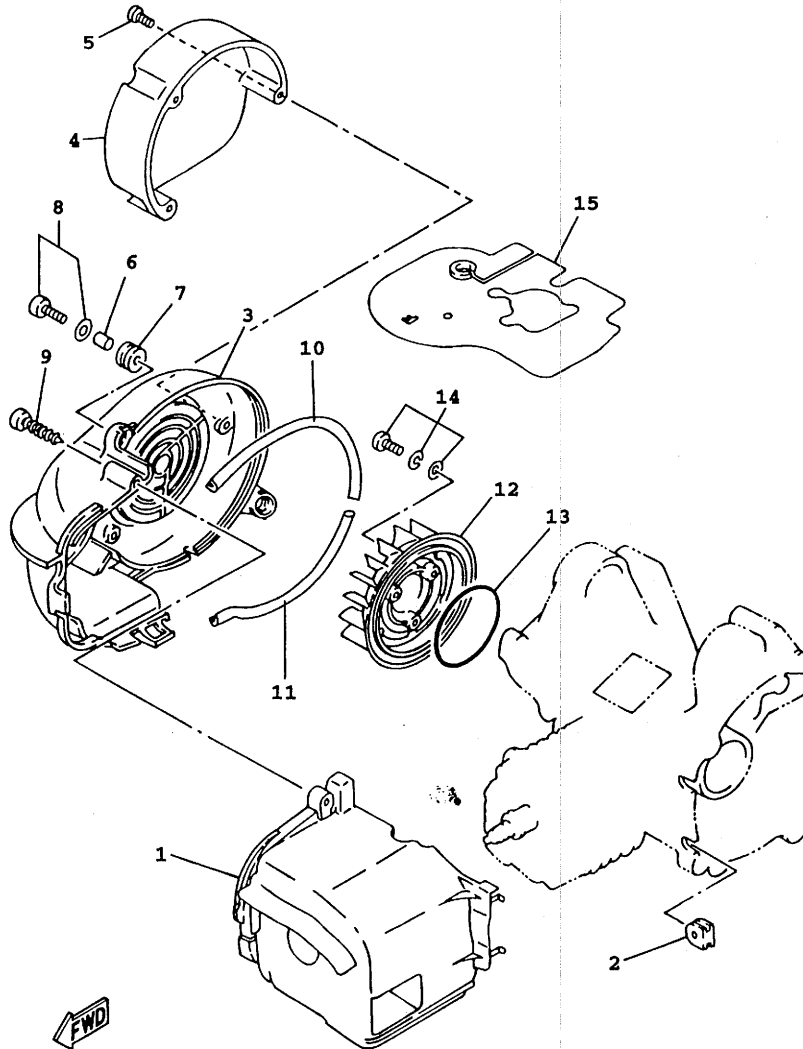
FIG. 2 CRANKSHAFT. PISTON

NO.	PART NO.	DESCRIPTION	Q'TY	REMARKS
1	4VP-E1400-00	CRANKSHAFT ASSY	1	
2	4VP-E1412-00	.CRANK 1	1	
3	4DM-E1681-00	.PIN, CRANK 1	1	
4	93310-418T0	.BRG.	1	
5	4VP-E1651-00	.ROD, CONNECTING	1	
6	4VP-E1422-00	.CRANK 2	1	
7	90209-18112	.WASHER	2	
8	90280-03017	KEY, WOODRUFF	1	
9	93306-205Y6	BRG.	2	
10	93102-22464	SEAL, OIL	1	
11	93101-20169	SEAL, OIL	1	
12	90387-178N6	COLLAR	1	
13	4VP-E1631-10-A0	PISTON (STD)	1	UR
	4VP-E1636-00	PISTON (0.50MM O/S)	1	UR
14	4VP-E1633-00	PIN, PISTON	1	
15	4VP-E1603-00	PISTON RING SET (STD)	1	UR
	3YR-11605-00	PISTON RING SET (0.50MM O/S)	1	UR
16	93450-16115	CIRCLIP	2	
17	93310-21403	BRG.	1	



3NW1414-9020

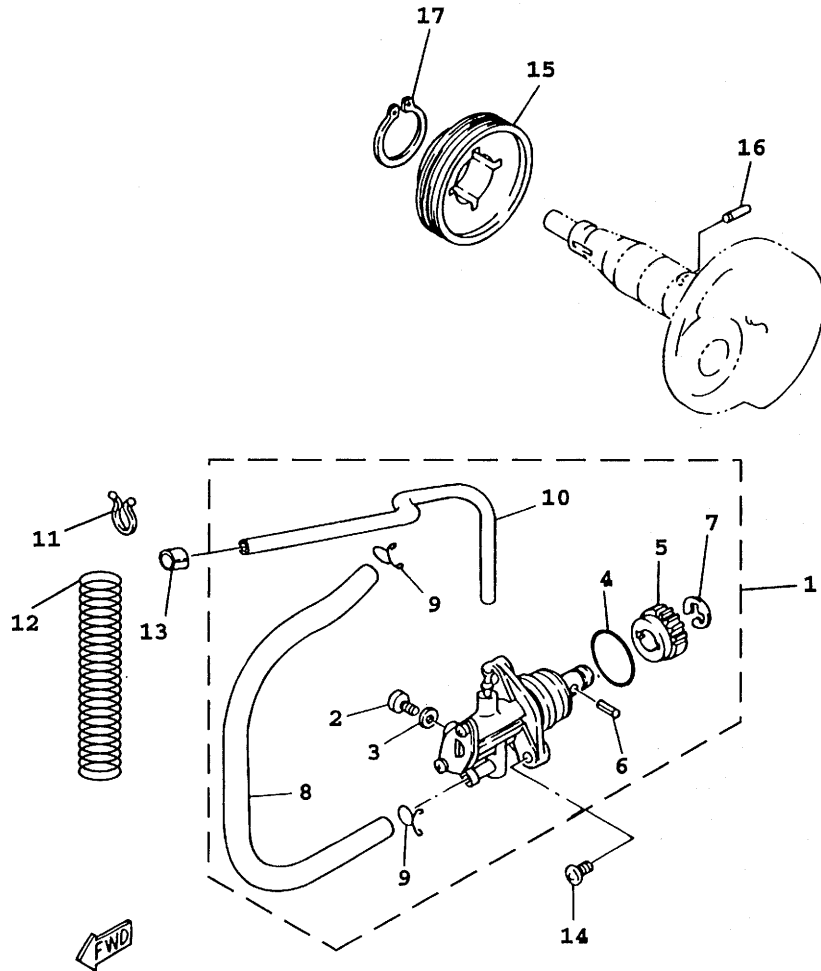
FIG. 3 AIR SHROUD.FAN



NO.	PART NO.	DESCRIPTION	Q'TY	REMARKS
1	4VP-E2651-00	AIR SHROUD, CYLINDER 1	1	
2	90480-11866	GROMMET	1	
3	4VP-E2653-00	AIR SHROUD, CYLINDER 3	1	
4	4DY-E262H-00	GUIDE, 1	1	
5	97707-40514	SCREW, TAPPING	3	
6	90387-068J5	COLLAR	3	
7	90480-12497	GROMMET	3	
8	97607-06220	SCREW, W/WASHER	3	
9	97707-60540	SCREW, TAPPING	1	
10	4VP-E2658-00	DAMPER, AIR SHROUD 1	1	
11	4VP-E2659-00	"DAMPER, AIR SHROUD 2	1	
12	4VP-E2611-00	FAN	1	
13	93210-64893	O-RING	1	
14	97607-06216	SCREW, W/WASHER	3	
15	3XG-E2631-00	DEFLECTOR 1	1	

4VP1414-7030

FIG. 4 OIL PUMP



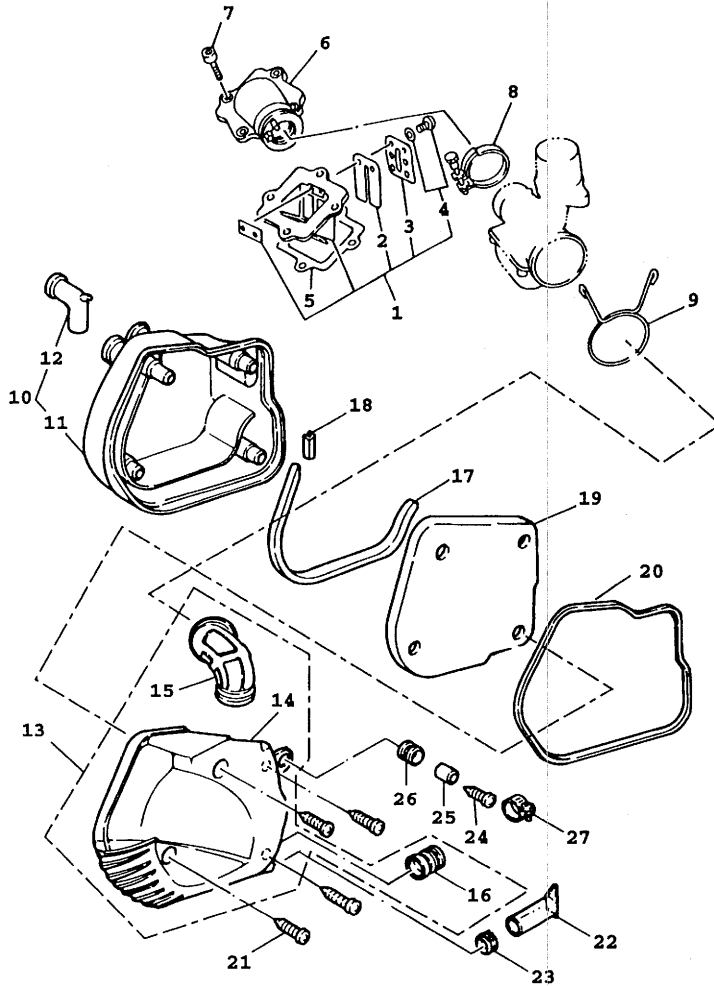
4VP1414-7042

REF.		DESCRIPTION	Q'TY	REMARKS
NO.	PART NO.			
1	4VP-E3100-00	OIL PUMP ASSY	1	
2	3WF-13185-00	.BOLT, BREATHER	1	
3	1YU-13187-00	.GASKET, BREATHER BOLT	1	
4	1YU-13473-00	.O-RING	1	
5	3AA-13124-00	.GEAR, WORM WHEEL	1	
6	1YU-13516-00	.PIN, DOWEL	1	
7	1YU-13577-00	.CLIP	1	
8	90445-09124	.HOSE	1	
9	90467-08003	.CLIP	2	
10	90445-05431	.HOSE	1	
11	90464-16801	CLAMP	1	
12	90501-08845	SPRING, COMPRESSION	1	
13	90468-02033	CLIP	1	
14	98507-05014	SCREW, PAN HEAD	2	
15	4VP-13178-00	GEAR, PUMP DRIVE	1	
16	93603-12827	PIN DOWEL	1	
17	99009-19400	CIRCLIP	1	

FIG. 5 INTAKE

REF.

NO.	PART NO.	DESCRIPTION	Q'TY	REMARKS
1	4VP-E3610-00	REED VALVE ASSY	1	
2	3XG-E3613-00	.REED, VALVE	2	
3	3XG-E3616-00	.STOPPER, REED VALVE	2	
4	97607-03206	.SCREW, W/WASHER	4	
5	4SC-E3621-00	GASKET, VALVE SEAT	1	
6	4WX-E3555-10	MANIFOLD, INTAKE	1	
7	91318-06020	BOLT	4	
8	3XG-E3575-01	BAND	1	
9	90467-24140	CLIP	1	
10	4VP-W1441-00	AIR CLEANER CASE COMP.	1	
11	4VP-E4411-00	.CASE, AIR CLEANER 1	1	
12	4VP-E4437-00	.DUCT	1	
13	4VP-W1442-00	AIR CLEANER CASE COMP	1	
14	4VP-E4412-00	.CAP, CLEANER CASE 1	1	
15	4VP-E4453-00	.JOINT, AIR CLEANER 1	1	
16	4VP-E4463-00	.JOINT, AIR CLEANER 2	1	
17	4VP-E4462-00	SEAL	1	
18	4VP-E4467-00	SEAL	1	
19	4VP-E4451-00	ELEMENT, AIR CLEANER	1	
20	4VP-E4452-00	SEAL	1	
21	97707-50125	SCREW, TAPPING	4	
22	4VP-E443E-00	PIPE, DRAIN	1	
23	90467-11823	CLIP	1	
24	97607-06220	SCREW, W/WASHER	1	
25	90387-068J5	COLLAR	1	
26	90480-12497	GROMMET	1	
27	90460-41191	CLAMP, HOSE	1	



4VP5200-7050

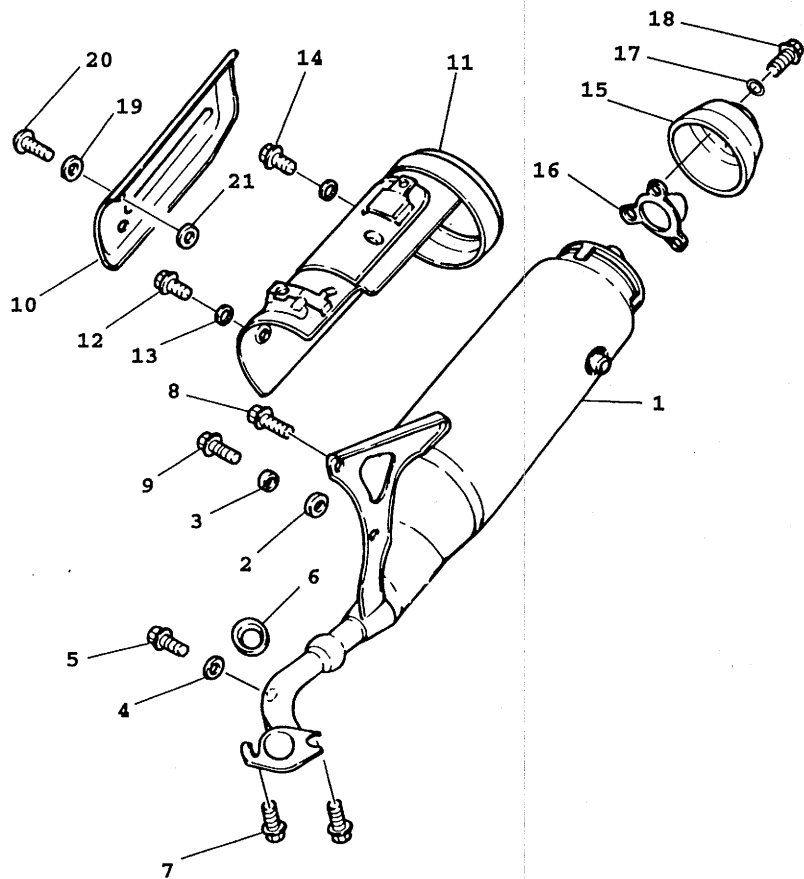
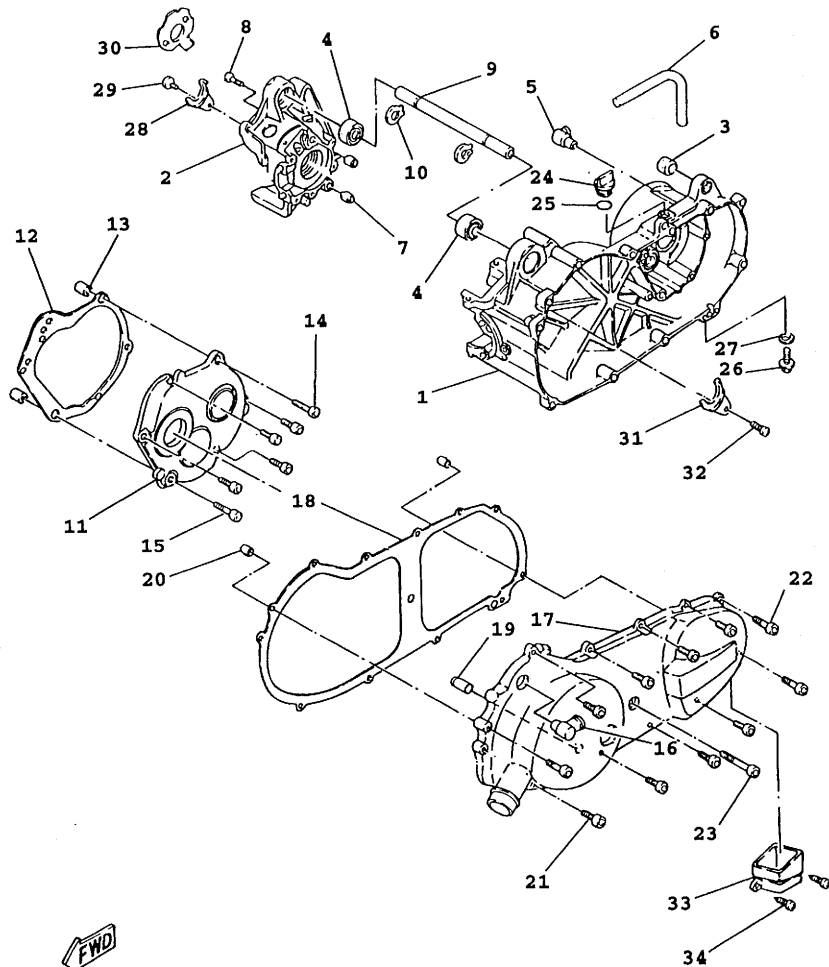


FIG. 7 EXHAUST

REF.	NO.	PART NO.	DESCRIPTION	Q'TY	REMARKS
	1	4VP-E4610-20-98	EXHAUST PIPE ASSY 1	1	LOW GLOSS BLACK
	2	4VP-E4445-00	GROMMET	1	
	3	4VP-E4779-00	COLLAR	1	
	4	92990-06600	WASHER, PLATE	1	
	5	97380-06008	BOLT	1	
	6	3NT-E4613-01	GASKET, EXHAUST PIPE	1	
	7	90149-06810	SCREW	2	
	8	95817-08020	BOLT, FLG	1	
	9	95817-08030	BOLT, FLG	1	
	10	4VP-E4708-00	PROTECTOR ASSY	1	
	11	4VP-E4627-00	EXHAUST COVER ASSY	1	
	12	97017-06010	BOLT, HEX	2	
	13	4CW-E4766-00	WASHER, PROTECTOR	4	
	14	97517-06510	BOLT, W/WASHER	3	
	15	4VP-E4799-00	CAP	1	
	16	4VP-E475M-00	PIPE, 9	1	
	17	92907-06200	WASHER, PLATE	3	
	18	90176-06065	NUT, CROWN	3	
	19	4CW-E4766-00	WASHER, PROTECTOR	3	
	20	98980-06012	SCREW, BINDING HEAD (+)	3	
	21	3XY-E4766-00	WASHER, PROTECTOR	3	

4VP5200-7070



4VP1414-7080

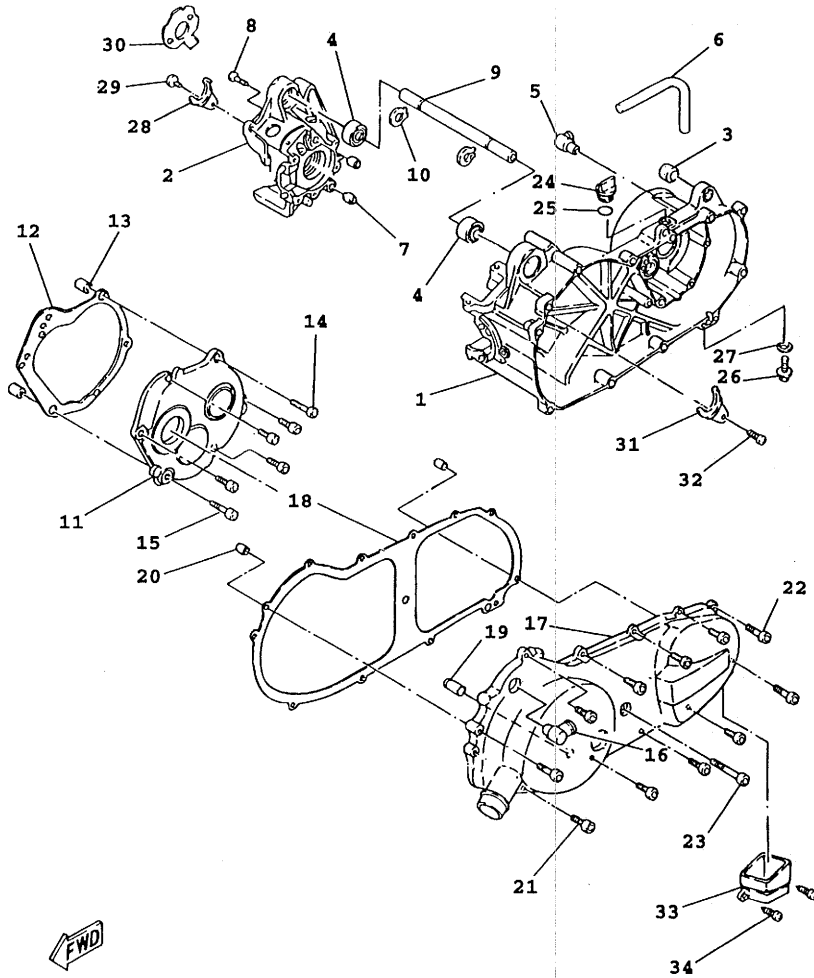
FIG. 8 CRANKCASE

REF.				
NO.	PART NO.	DESCRIPTION	QTY	REMARKS
1	4VP-E5111-00	CRANKCASE 1	1	
2	4VP-E5121-00	CRANKCASE 2	1	
3	4X6-F2216-00	BUSH, REAR SHOCK ABSORBER	1	
4	93306-003Y4	BRG.	2	
5	3XG-E5371-00	BREATHER	1	
6	4VP-E5373-00	PIPE, BREATHER	1	
7	99530-12016	PIN, DOWEL	2	
8	91318-06035	BOLT	6	
9	3XG-E5317-00	SPACER, ENGINE MOUNT	1	
10	99009-17400	CIRCLIP	2	
11	4VP-E5421-00	COVER, CRANKCASE 2	1	
12	5DA-E5461-00	GASKET, CRANKCASE COVER 2	1	
13	99530-10114	PIN, DOWEL	2	
14	91318-06035	BOLT	2	
15	91318-06020	BOLT	4	
16	4VP-E5439-00	PLUG, BLIND	1	
17	4VP-E5411-00-33	COVER, CRANKCASE 1	1	YAMAHA BLACK
18	5DA-E5451-00	GASKET, CRANKCASE COVER 1	1	
19	4VP-E5659-00	SHAFT	1	
20	99530-10114	PIN, DOWEL	2	
21	91317-06025	BOLT, HEX. SOCKET	9	
22	91317-06035	BOLT, HEX. SOCKET	2	
23	91317-06045	BOLT, HEX. SOCKET	1	
24	4Y4-E5363-00	PLUG, OIL	1	
25	93210-14805	O-RING	1	
26	95807-08016	BOLT, FLG	1	
27	90430-08119	GASKET	1	
28	4VP-E5128-00	HOLDER	1	

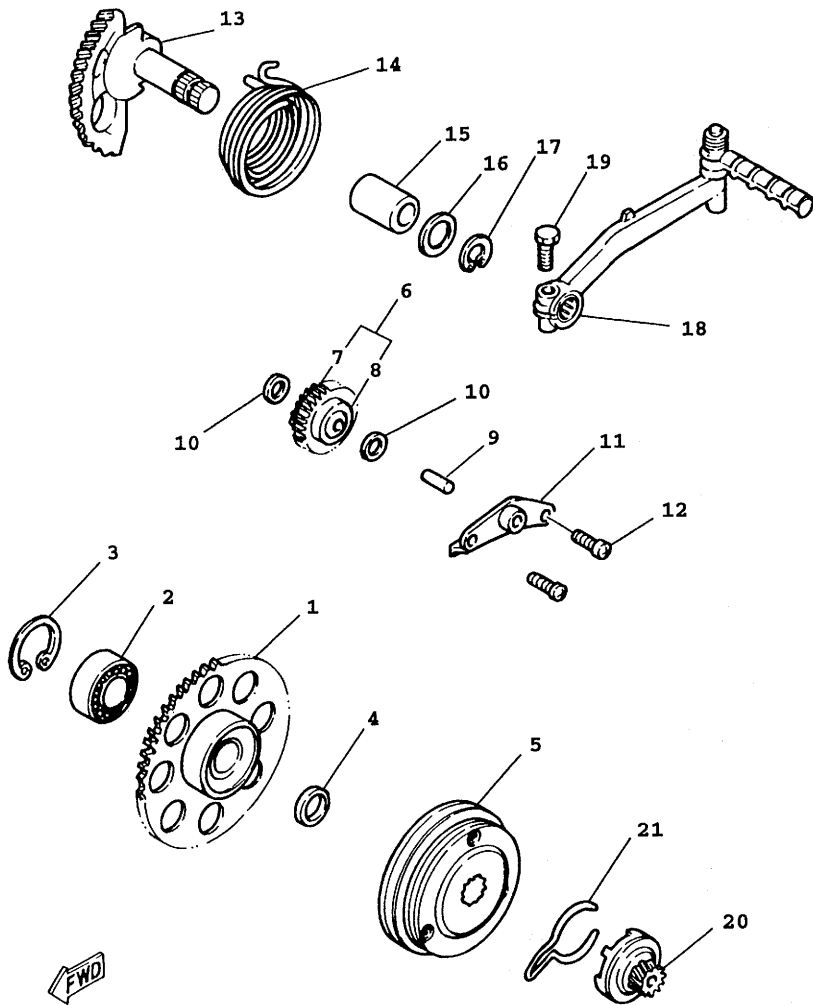
FIG. 8 CRANKCASE

REF.

NO.	PART NO.	DESCRIPTION	Q'TY	REMARKS
29	98507-06012	SCREW, PAN HEAD	1	
30	4SC-E5462-00	GASKET, CRANKCASE COVER 3	1	
31	4VP-E5118-00	HOLDER	1	
32	98507-06012	SCREW, PAN HEAD	1	
33	4VP-E5477-00	DUCT, AIR	1	
34	97607-06220	SCREW, W/WASHER	2	



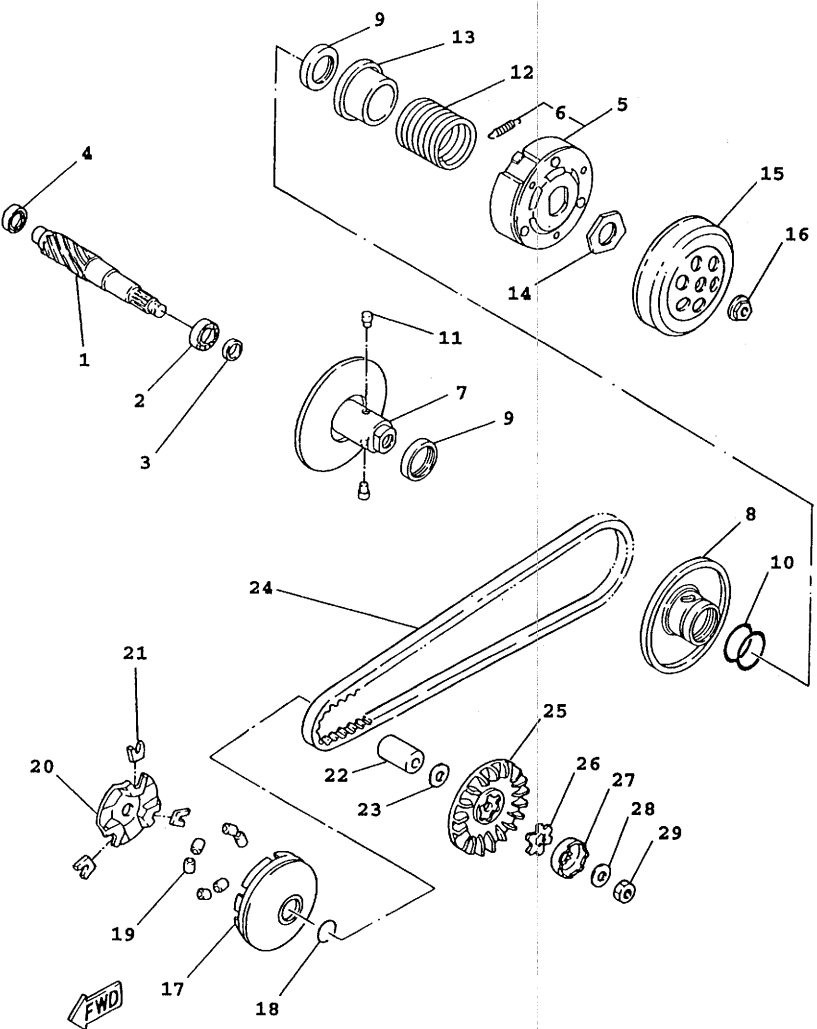
4VP1414-7080



4VP1414-7090

FIG. 9 STARTER

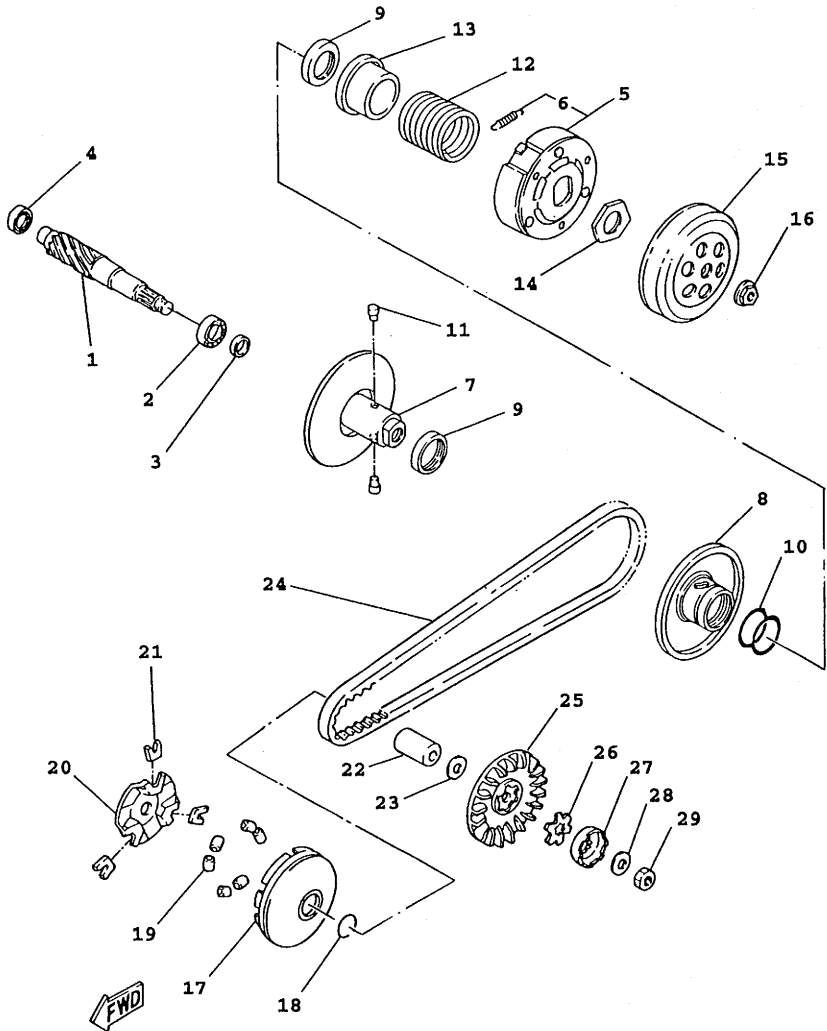
REF.	NO.	PART NO.	DESCRIPTION	Q'TY	REMARKS
	1	4VP-E5524-00	WHEEL, STARTER	1	
	2	93306-003Y4	BRG.	1	
	3	93450-35015	CIRCLIP	1	
	4	90201-163G6	WASHER, PLATE	1	
	5	4CW-E5570-00	STARTER CLUTCH ASSY	1	
	6	4VP-E5650-00	IDLE GEAR ASSY	1	
	7	4VP-E5512-00	.GEAR, IDLER 1	1	
	8	93315-108Y4	.BRG.	1	
	9	3XG-E3342-00	SHAFT, IDLE GEAR	1	
	10	90201-08088	WASHER, PLATE	2	
	11	3XG-E5532-00	PLATE, IDLE GEAR	1	
	12	98507-06012	SCREW, PAN HEAD	2	
	13	4VP-E5601-00	KICK SHAFT ASSY	1	
	14	90508-32768	SPRING, TORSION	1	
	15	90380-15817	BUSH, SOLID	1	
	16	90201-155G5	WASHER, PLATE	1	
	17	99009-15400	CIRCLIP	1	
	18	3XG-E5620-00	KICK CRANK ASSY	1	
	19	97017-06025	BOLT, HEX	1	
	20	4VP-E5630-00	KICK PINION ASSY	1	
	21	4VP-E5673-00	CLIP	1	



4VP5200-7100

FIG. 10 CLUTCH

REF.				
NO.	PART NO.	DESCRIPTION	Q'TY	REMARKS
1	4VP-16111-00	GEAR, PRIMARY DRIVE	1	
2	93306-203YE	BRG.	1	
3	93102-17467	SEAL,OIL	1	
4	93306-200Y1	BRG.	1	
5	4DM-E6620-00	CLUTCH CARRIER ASSY	1	
6	4CW-E6626-00	SPRING, CLUTCH WEIGHT 1	3	
7	4VP-E7660-00	SECONDARY FIXED SHEAVE COMP.	1	
8	4VP-E7670-00	SECONDARY SLIDING SHEAVE	1	
9	93104-33117	SEAL,OIL	2	
10	93210-368G9	O-RING	2	
11	4DM-E7664-00	PIN, GUIDE	2	
12	90501-430K3	SPRING, COMPRESSION	1	
13	4DM-E7684-00	SEAT, SECONDARY SPRING	1	
14	90179-28415	NUT	1	
15	4VP-E6611-00	CLUTCH HOUSING COMP.	1	
16	90179-10609	NUT	1	
17	4VP-E7620-00	PRIMARY SLIDING SHEAVE COMP.	1	
18	93101-21170	SEAL,OIL	2	
19	4VP-17632-00	WEIGHT	6	
20	4VP-E7623-00	CAM	1	
21	4CW-17653-10	SLIDER	3	
22	90387-168N7	COLLAR	1	
23	90201-166L3	WASHER, PLATE	1	
24	4VP-17641-00	V-BELT	1	
25	4VP-E7611-00	SHEAVE, PRIMARY FIXED	1	
26	90214-14054	WASHER, CLAW	1	
27	14T-15657-00	CLUTCH, ONEWAY	1	
28	90208-12050	WASHER, CONICAL SPRING	1	



4VP5200-7100

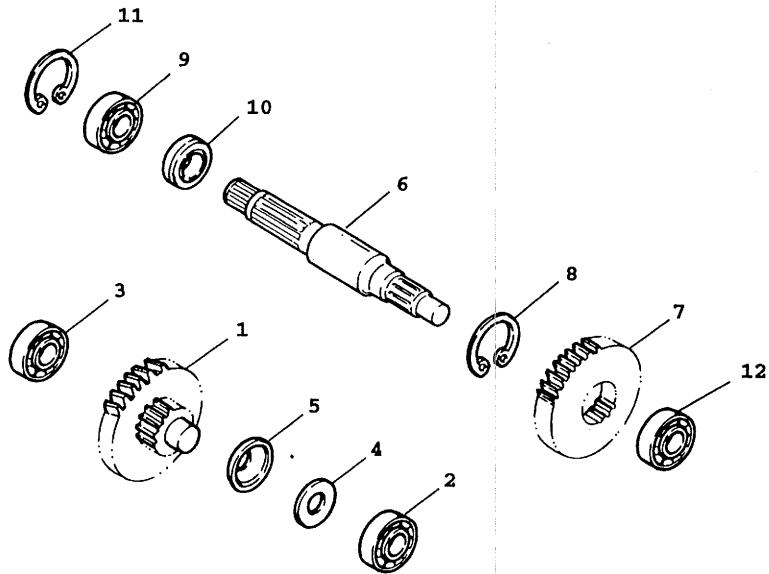
FIG. 10 CLUTCH

REF.				
NO.	PART NO.	DESCRIPTION	Q'TY	REMARKS
29	95307-12700	NUT, HEXAGON	1	

FIG. 11 TRANSMISSION

REF.

NO.	PART NO.	DESCRIPTION	Q'TY	REMARKS
1	4VP-E7410-00	MAIN AXLE COMP.	1	
2	93311-315Y2	BRG.	1	
3	93306-200Y1	BRG.	1	
4	90201-158K9	WASHER, PLATE	1	
5	90208-15807	WASHER, CONICAL SPRING	1	
6	4VP-E7421-00	AXLE, DRIVE	1	
7	4VP-E7211-00	GEAR, 1ST WHEEL	1	
8	93410-20823	CIRCLIP	1	
9	93306-004X7	BRG.	1	
10	93102-25270	SEAL, OIL	1	
11	99009-42500	CIRCLIP	1	
12	93306-203YE	BRG.	1	



4VP1414-7110

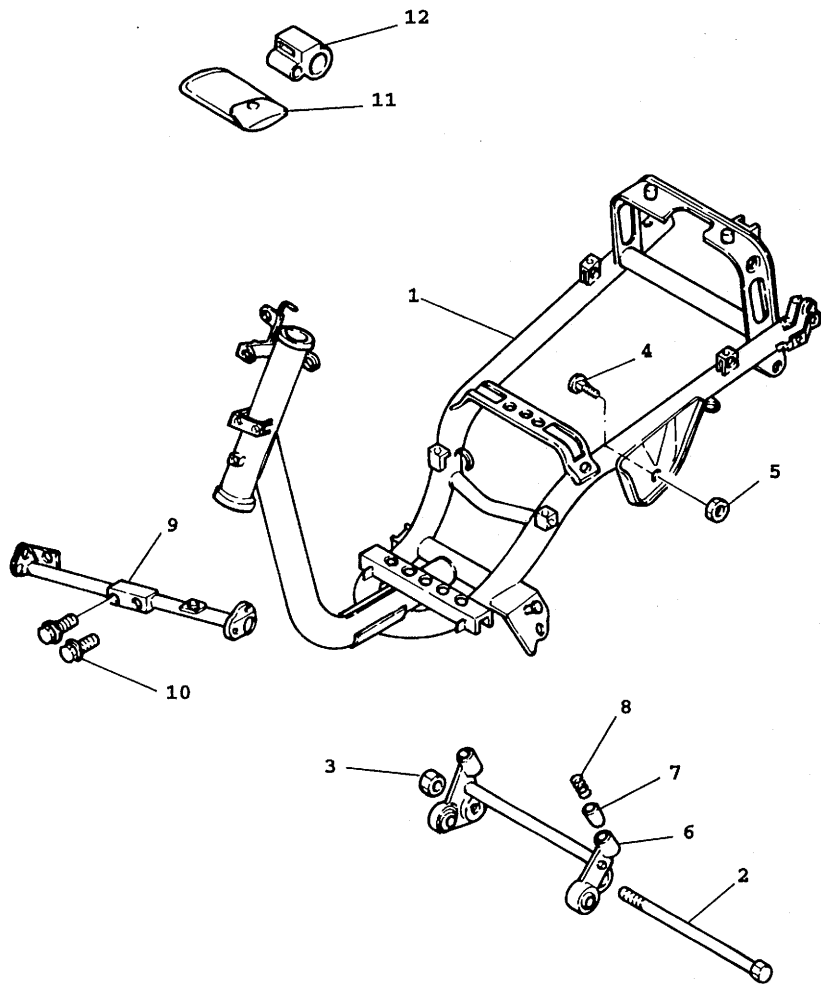
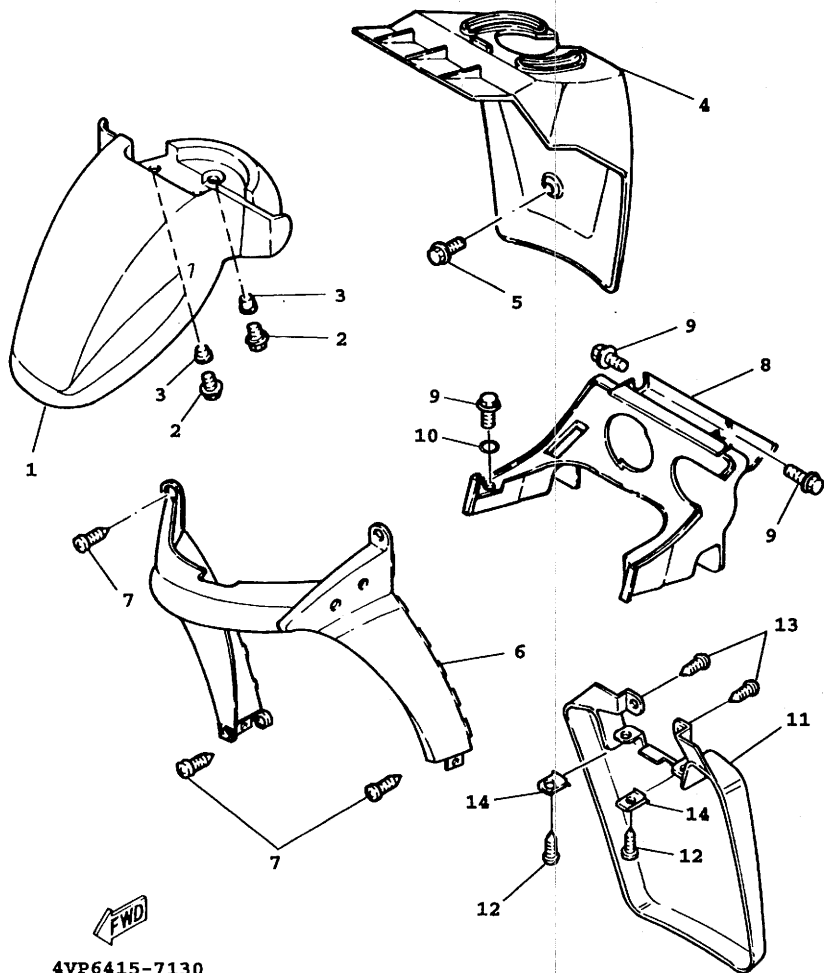


FIG. 12 FRAME

NO.	PART NO.	DESCRIPTION	QTY	REMARKS
1	4VP-F1110-10-33	FRAME COMP.	1	YAMAHA BLACK
2	3XG-F1481-00	BOLT, ENGINE MOUNTING 1	1	
3	95607-12200	NUT, SELF-LOCKING	1	
4	4Y4-F1481-00	BOLT, ENGINE MOUNTING 1	2	
5	95607-10200	NUT, SELF-LOCKING	2	
6	4VP-F1410-10	ENGINE BRACKET COMP.	1	
7	4Y4-F139X-01	DAMPER	1	
8	90501-29517	SPRING, COMPRESSION	1	
9	4VP-F1514-00	STAY, FENDER 2	1	
10	95807-08035	BOLT, FLG	2	
11	45U-F8100-00	TOOL KIT	1	
12	23Y-F8175-00	HOLDER, TOOL	1	


4VP1414-7120

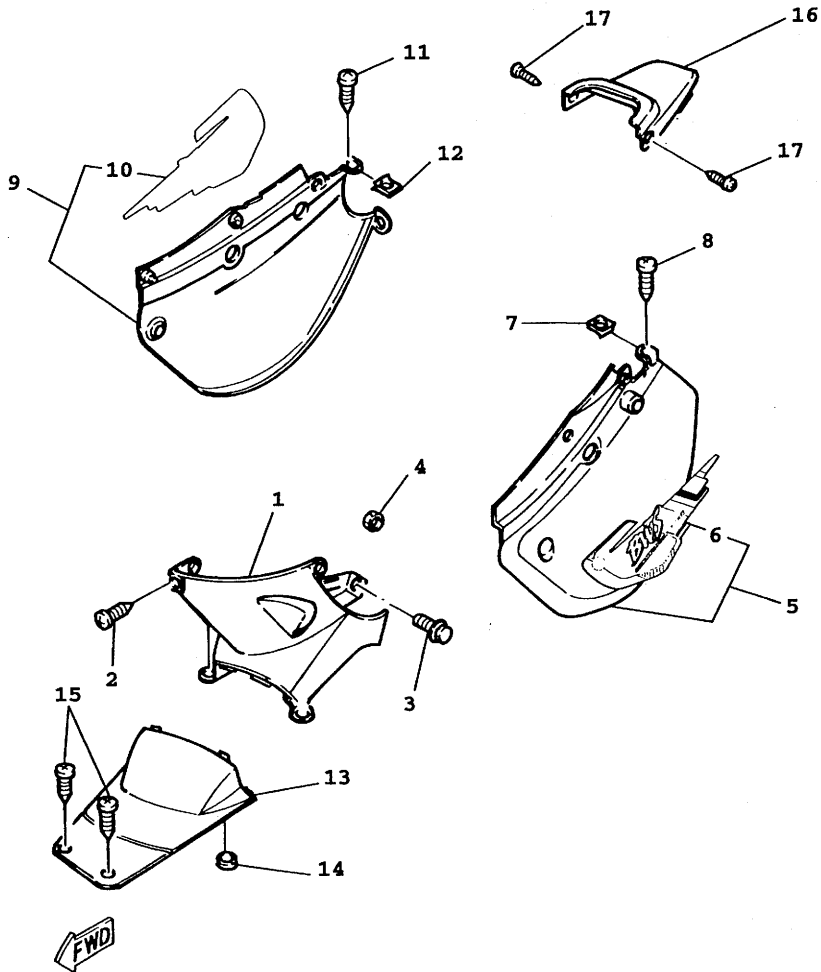


4VP6415-7130

FIG. 13 FRONT FENDER

REF.

NO.	PART NO.	DESCRIPTION	Q'TY	REMARKS
1	4VP-F1511-00	FENDER, FRONT	1	UR BLACK
	4VP-F1511-70	FENDER, FRONT	1	UR DEEP PURPLISH BLUE
	4VP-F1511-40	FENDER, FRONT	1	UR VIVID YELLOW SOLID
2	90119-06821	BOLT, WITH WASHER	3	
3	90387-068F8	COLLAR	3	
4	4VP-F1552-00	FENDER, INNER	1	
5	95807-06012	BOLT, FLG	2	
6	4VP-F1519-01	MOLD, FENDER	1	UR BLACK; VIVID YELLOW
6	4VP-F1519-41	MOLD, FENDER	1	UR DEEP PURPLISH BLUE
7	97707-50016	SCREW, TAPPING	4	
8	4VP-F1629-00	GUARD, MUD	1	
9	95807-06012	BOLT, FLG	4	
10	90201-06380	WASHER, PLATE	2	
11	4VP-F1691-01	FLAP	1	
12	97707-50012	SCREW, TAPPING	2	
13	97707-50016	SCREW, TAPPING	2	
14	90183-05807	NUT, SPRING	2	

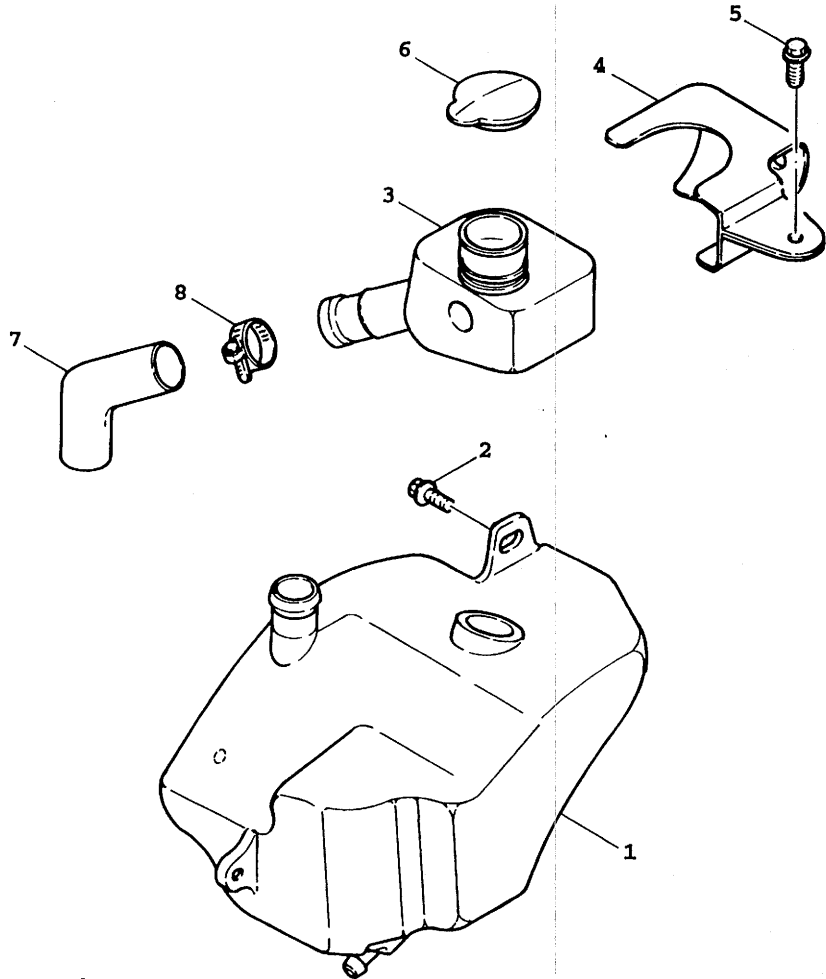


4VP3414-8161

FIG. 14 SIDE COVER

NO.	PART NO.	DESCRIPTION	QTY	REMARKS
1	4VP-F1711-00	COVER, SIDE 1	1	
2	97707-50012	SCREW, TAPPING	3	
3	90159-06822	SCREW, WITH WASHER	2	
4	2GF-F1535-00	NUT 1	2	
5	4VP-X2172-00-4B	SIDE COVER 2	1	UR BLACK
	4VP-X2172-00-P0	SIDE COVER 2	1	UR DEEP PURPLISH BLUE
	4VP-X2172-10-P3	SIDE COVER 2	1	UR VIVID YELLOW SOLID
6	4VP-F173E-00	.GRAPHIC 1	1	UR BLACK
	4VP-F174G-B0	.GRAPHIC 3	1	UR DEEP PURPLISH BLUE
	4VP-F173E-60	.GRAPHIC 1	1	UR VIVID YELLOW SOLID
7	90183-05807	NUT, SPRING	1	
8	97707-50012	SCREW, TAPPING	3	
9	4VP-X2173-00-4B	SIDE COVER 3	1	UR BLACK
	4VP-X2173-00-P0	SIDE COVER 3	1	UR DEEP PURPLISH BLUE
	4VP-X2173-10-P3	SIDE COVER 3	1	UR VIVID YELLOW SOLID
10	4VP-F173F-00	.GRAPHIC 2	1	UR BLACK
	4VP-F174H-B0	.GRAPHIC 4	1	UR DEEP PURPLISH BLUE
	4VP-F173F-60	.GRAPHIC 2	1	UR VIVID YELLOW SOLID
11	97707-50012	SCREW, TAPPING	3	
12	90183-05807	NUT, SPRING	1	
13	4VP-F1741-00	COVER, SIDE 4	1	
14	90480-16278	GROMMET	1	
15	97707-50012	SCREW, TAPPING	2	
16	4VP-F171E-00-4B	COVER, SIDE 5	1	UR BLACK
	4VP-F171E-00-P0	COVER, SIDE 5	1	UR DEEP PURPLISH BLUE
	4VP-F171E-00-P3	COVER, SIDE 5	1	UR VIVID YELLOW SOLID
17	97707-50012	SCREW, TAPPING	2	

FIG. 15 OIL TANK



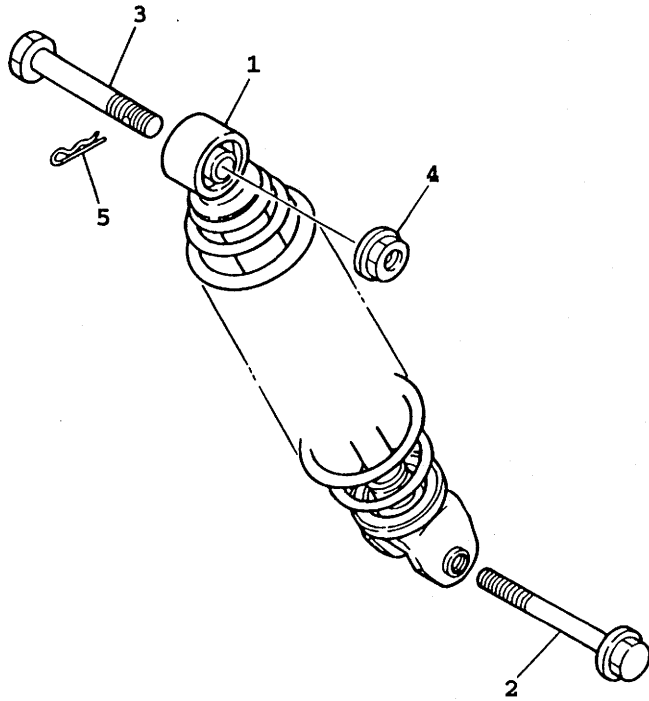
REF.				
NO.	PART NO.	DESCRIPTION	Q'TY	REMARKS
1	4VP-F1751-00	TANK, OIL	1	
2	90119-06802	BOLT, WITH WASHER	2	
3	4VP-F1733-00	SUB TANK, OIL	1	
4	4VP-F1734-00	HOLDER, OIL SUB TANK	1	
5	97507-05510	BOLT,W/WASHER	1	
6	4X6-F1771-01	BODY, CAP	1	
7	4VP-F1745-00	PIPE, OIL TANK BREATHER	1	
8	90460-27815	CLAMP, HOSE	2	



4VP1414-7170

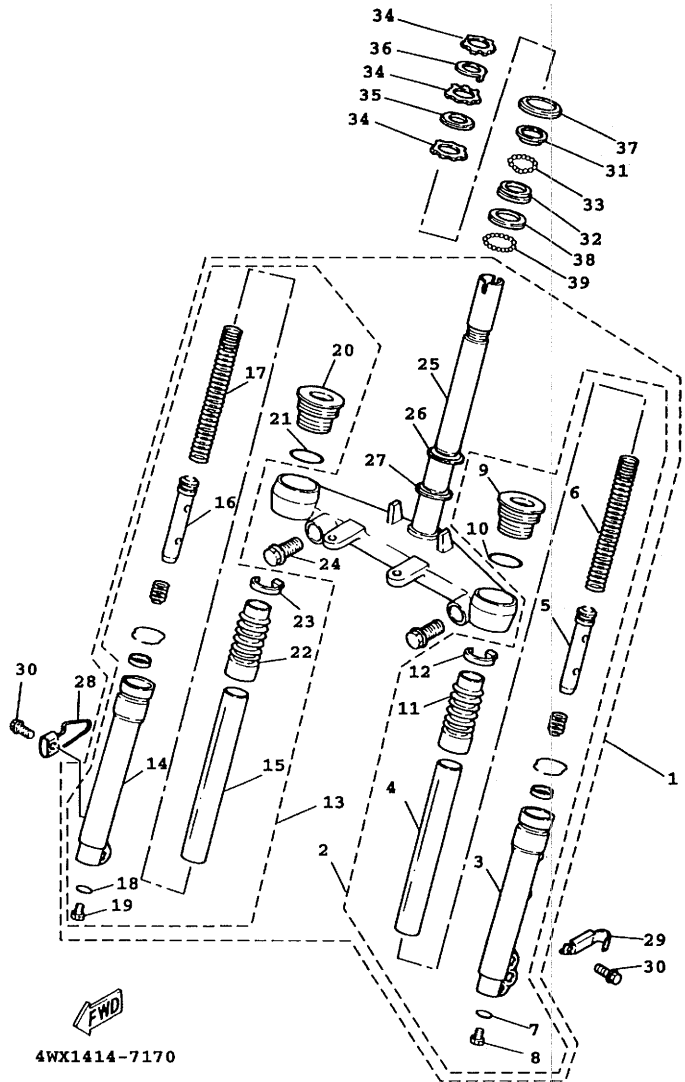
FIG. 16 REAR SUSPENSION

REF.				
NO.	PART NO.	DESCRIPTION	Q'TY	REMARKS
1	4WX-F2210-10	SHOCK ABSORBER ASSY, REAR	1	
2	90105-08121	BOLT, WASHER BASED	1	
3	90102-10031	BOLT, WITH HOLE	1	
4	95707-10500	NUT, FLG	1	
5	90468-12006	CLIP	1	



3XG4414-4160

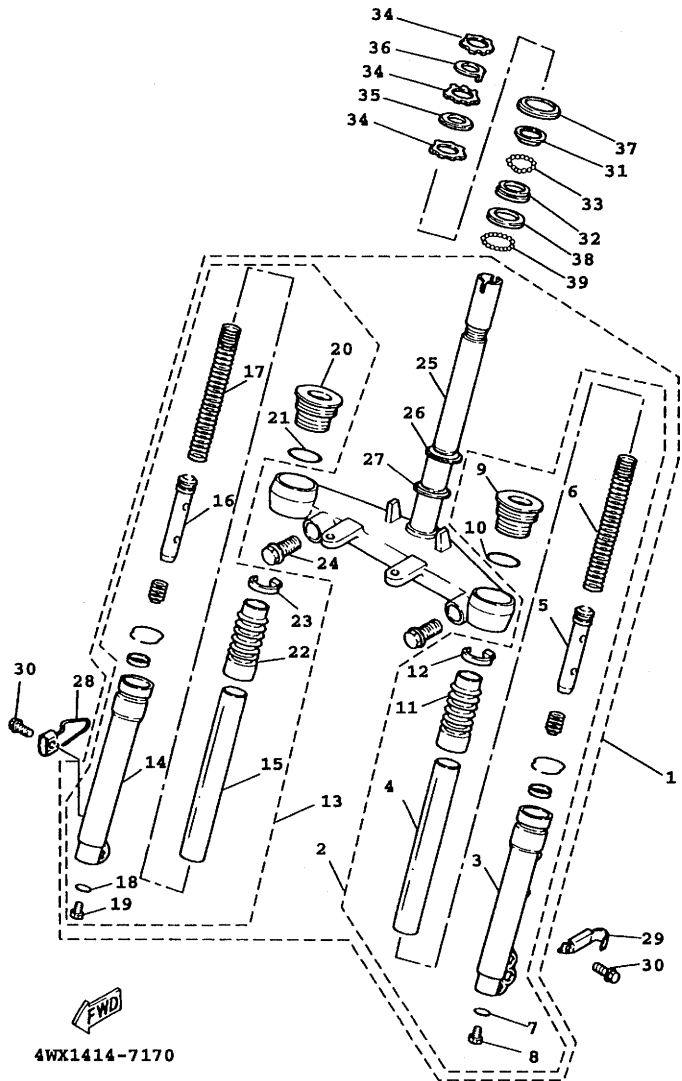
FIG. 17 FRONT FORK



4WX1414-7170

NO.	PART NO.	DESCRIPTION	Q'TY	REMARKS
1	4WX-F3100-00	FRONT FORK ASSY	1	
2	4WX-F3102-00	.FRONT FORK ASSY (L.H)	1	
3	4JL-F3126-00	..TUBE, OUTER 1	1	
4	4WX-F3110-00	..INNER TUBE COMP.1	1	
5	4WX-F3170-00	..CYLINDER COMP.,	1	
6	4WX-F3141-00	..SPRING, FRONT FORK	1	
7	3GF-F3158-00	..GASKET	1	
8	3GF-F3181-00	..BOLT, HEXAGON SOCKET HEAD	1	
9	4WX-F3154-00	..PLUG, INNER TUBE	1	
10	3GF-F3147-00	..O-RING	1	
11	4WX-F3191-00	..BOOT	1	
12	4TE-F3192-00	..BAND	1	
13	4WX-F3103-00	.FRONT FORK ASSY (R.H)	1	
14	4JL-F3136-00	..TUBE, OUTER 2	1	
15	4WX-F3110-00	..INNER TUBE COMP.1	1	
16	4WX-F3170-00	..CYLINDER COMP.,	1	
17	4WX-F3141-00	..SPRING, FRONT FORK	1	
18	3GF-F3158-00	..GASKET	1	
19	3GF-F3181-00	..BOLT, HEXAGON SOCKET HEAD	1	
20	4WX-F3154-00	..PLUG, INNER TUBE	1	
21	3GF-F3147-00	..O-RING	1	
22	4WX-F3191-00	..BOOT	1	
23	4TE-F3192-00	..BAND	1	
24	3GF-F3346-00	..BOLT 1	2	
25	4WX-F3340-00	..UNDER BRACKET COMP.	1	
26	1MH-F3411-00	..RACE, BALL 1	1	
27	3KW-F3462-00	.SEAL, STEERING	1	
28	3GF-F3317-00	HOLDER, CABLE	1	

FIG. 17 FRONT FORK



REF.	NO.	PART NO.	DESCRIPTION	Q'TY	REMARKS
	29	3GF-F5875-10	HOLDER, BRAKE HOSE 1	1	
	30	95807-06010	BOLT, FLG	2	
	31	22F-23411-01	RACE, BALL 1	1	
	32	22F-23412-01	RACE, BALL 2	1	
	33	93503-16003	BALL	22	
	34	90179-25615	NUT	3	
	35	90202-26142	WASHER, PLATE	1	
	36	4VP-F3418-00	WASHER, SPECIAL	1	
	37	4TE-F3416-00	COVER, BALL RACE 2	1	
	38	156-23412-00	RACE, BALL 2	1	
	39	93501-04011	BALL	19	
	40	3UH-W2341-01	RACE BALL KIT	1	

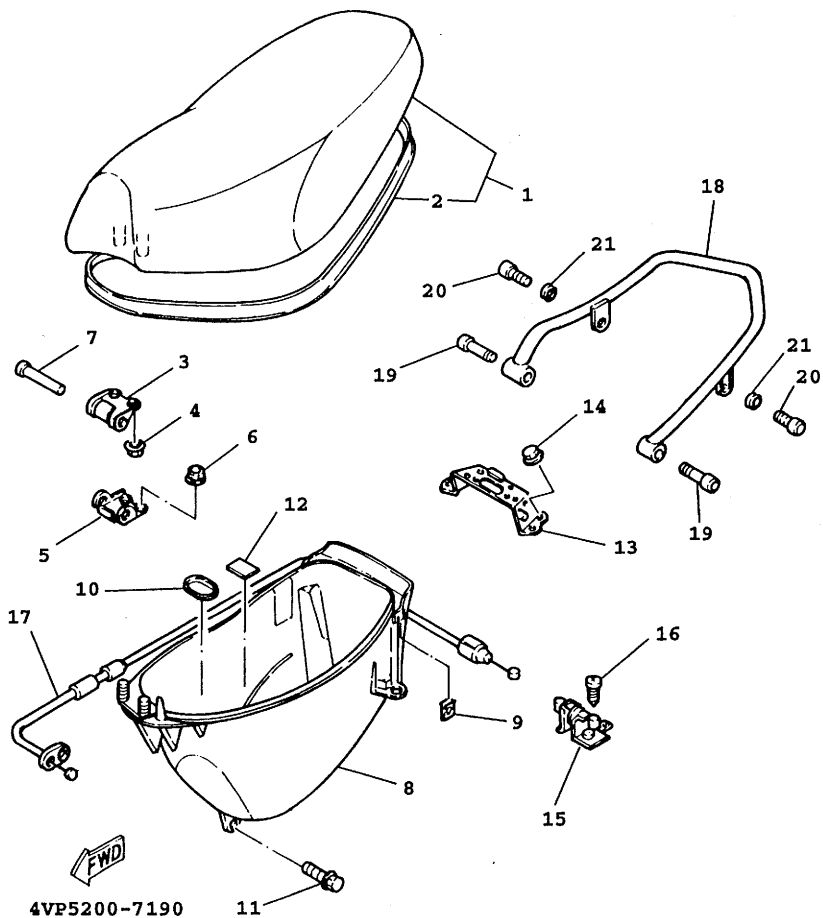


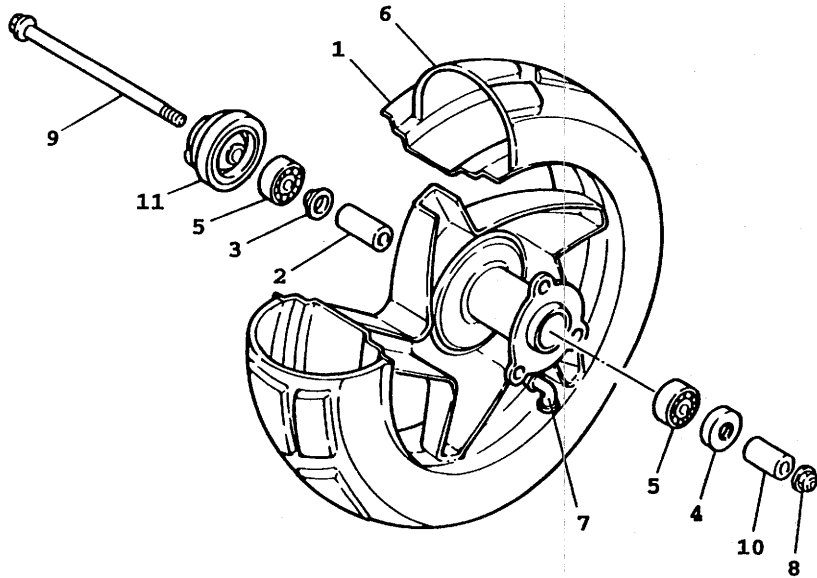
FIG. 19 SEAT. CARRIER

REF.	NO.	PART NO.	DESCRIPTION	Q'TY	REMARKS
	1	4VP-F4730-00	DOUBLE SEAT ASSY	1	
	2	4VP-F475M-00	SEAL	1	
	3	4CW-F4726-01	HINGE, SEAT	1	
	4	95707-06500	NUT, FLG	2	
	5	4VP-F4726-00	HINGE, SEAT	1	
	6	95707-06500	NUT, FLG	2	
	7	90241-10015	PIN	1	
	8	4VP-F473R-00	BOX 1	1	
	9	90183-05807	NUT, SPRING	2	
	10	4VP-F4742-00	GROMMET	1	
	11	90109-063F1	BOLT	4	
	12	3KW-F139X-00	DAMPER	1	
	13	4VP-F4738-00	BRACKET, SEAT	1	
	14	95707-06500	NUT, FLG	4	
	15	4UE-F4780-01	SEAT LOCK ASSY	1	
	16	97007-06016	BOLT, HEX	2	
	17	4VP-F478E-00	WIRE, SEAT HOOK	1	
	18	4VP-F4812-01-33	HANDLE	1	UR YAMAHA BLACK
	18	4VP-F4812-01-1V	HANDLE	1	UR FAIRY SILVER
	18	4VP-F4812-01-UJ	HANDLE	1	UR RADICAL WHITE
	19	91317-06045	"BOLT, HEX. SOCKET"	2	
	20	91317-06016	"BOLT, HEX. SOCKET"	2	
	21	92907-06600	"WASHER, PLATE"	2	

FIG. 20 FRONT WHEEL

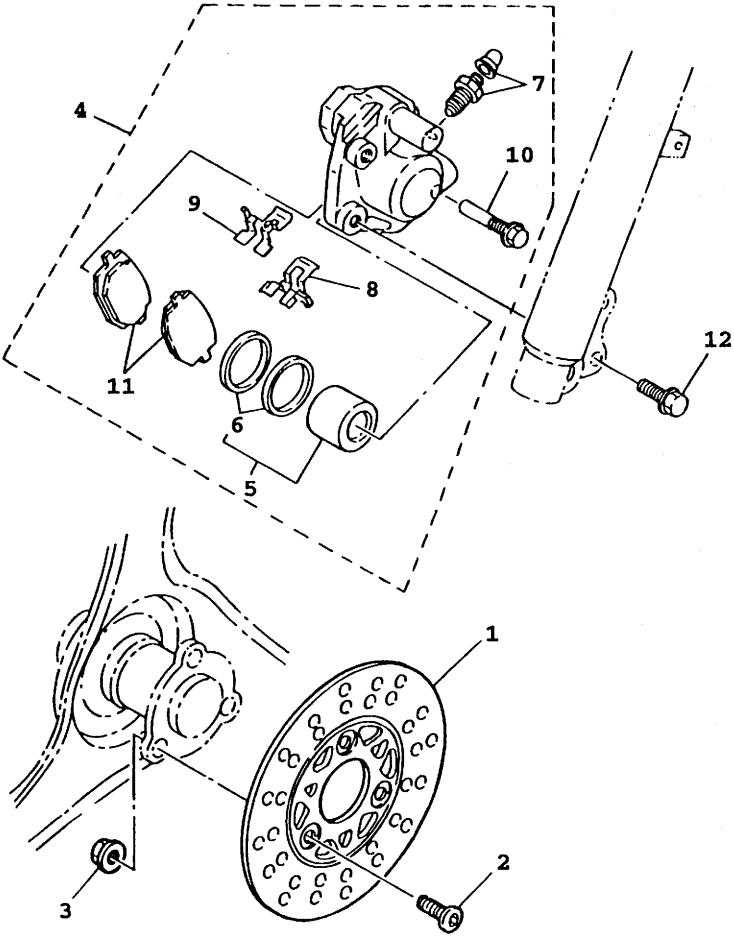
REF.

NO.	PART NO.	DESCRIPTION	Q'TY	REMARKS
1	4WX-F5180-01-33	FRONT WHEEL COMP.	1	YAMAHA BLACK
2	4WX-F5183-00	COLLAR, WHEEL	1	
3	20A-F5115-00	FLANGE, SPACER 1	1	
4	93102-17838	SEAL, OIL	1	
5	93306-300Y4	BRG.	2	
6	94112-108S3	TIRE	1	
7	93900-00802	VALVE, RIM	1	
8	95607-10200	NUT, SELF-LOCKING	1	
9	4WX-F5181-00	AXLE, WHEEL	1	
10	90387-104U5	COLLAR	1	
11	4VP-F5190-01	GEAR UNIT ASSY	1	



4WX1414-7200

FIG. 21 FRONT BRAKE CALIPER



REF.	NO.	PART NO.	DESCRIPTION	Q'TY	REMARKS
	1	3XG-F582T-00	DISC, BRAKE	1	
	2	90110-10811	BOLT, HEXAGON SOCKET HEAD	3	
	3	9570L-10500	NUT, FLG	3	
	4	3XG-F580T-01	CALIPER ASSY (LEFT)	1	
	5	3XG-W0057-00	PISTON ASSY, CALIPER	1	
	6	3XG-W0047-00	CALIPER SEAL KIT	1	
	7	3XG-W0048-00	BLEED SCREW KIT	1	
	8	3XG-F5919-01	SUPPORT, PAD	1	
	9	3XG-F5919-11	SUPPORT, PAD	1	
	10	3XG-F5926-01	BOLT	1	
	11	3GF-W0045-00	BRAKE PAD KIT	1	
	12	95827-08030	BOLT, FLG	2	

FWD

3XG4414-4210

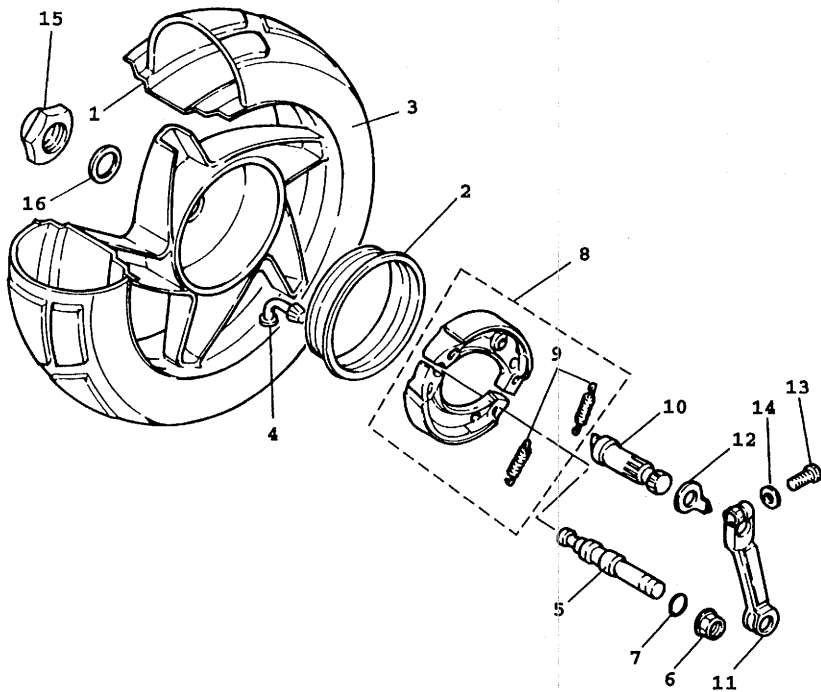


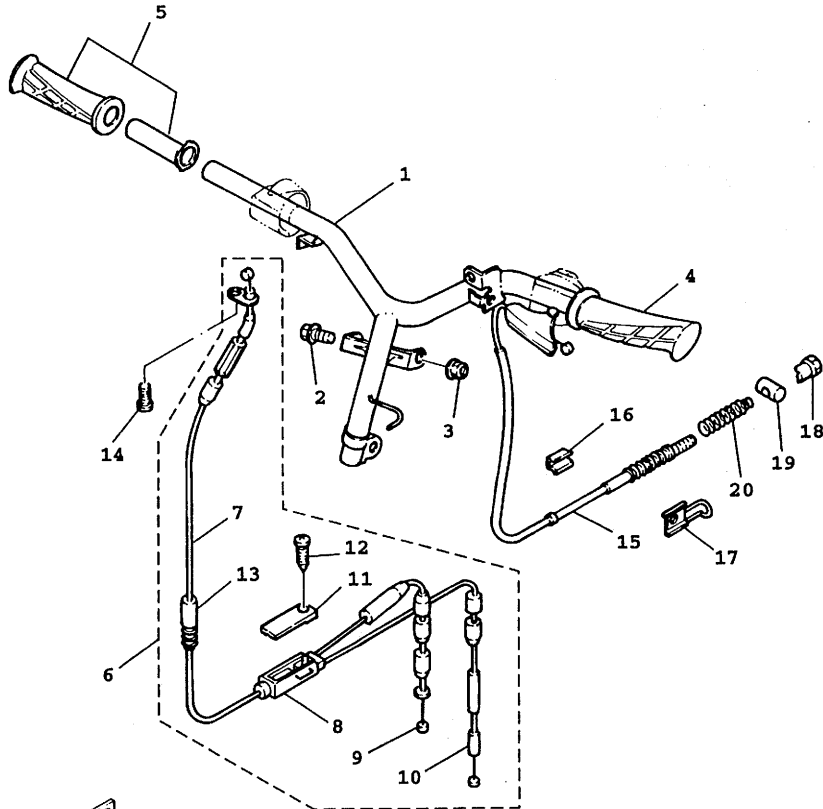
FIG. 22 REAR WHEEL

NO.	PART NO.	DESCRIPTION	Q'TY	REMARKS
1	4WX-F5390-00-33	REAR WHEEL COMP.	1	YAMAHA BLACK
2	4WX-F5336-00	RING 2	1	
3	94113-108S4	TIRE	1	
4	93900-00802	VALVE, RIM	1	
5	3UH-F5326-00	PIN, PIVOT	1	
6	95707-10500	NUT, FLG	1	
7	93210-07890	O-RING	1	
8	4WX-X2533-00	BRAKE SHOE SET	1	
9	90506-16447	.SPRING, TENSION	2	
10	3UH-F5351-00	CAMSHAFT	1	
11	4WX-F5355-00	LEVER, CAMSHAFT	1	
12	4VP-F533A-00	PLATE, INDICATOR	1	
13	90101-06878	BOLT	1	
14	90201-142M6	WASHER, PLATE	1	
15	90185-14124	NUT, SELF-LOCKING	1	
16	90201-203E7	WASHER, PLATE	1	



4WX1414-7220

FIG. 23 STEERING HANDLE. CABLE



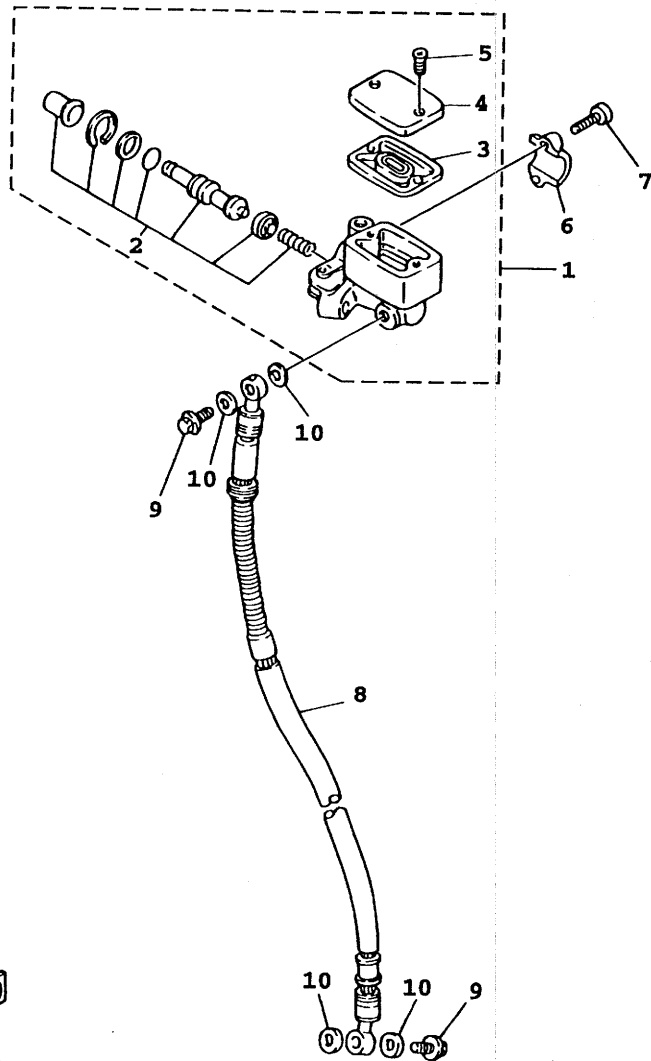
REF.	NO.	PART NO.	DESCRIPTION	Q'TY	REMARKS
	1	4VP-F6110-01	HANDLE COMP.	1	
	2	90105-10036	BOLT, WASHER BASED	1	
	3	95607-10200	NUT, SELF-LOCKING	1	
	4	4VP-F6241-00	GRIP (LEFT)	1	
	5	4VP-F6240-00	GRIP ASSY	1	
	6	4VP-W2620-01	CABLE ASSY	1	
	7	4VP-F6311-00	.CABLE, THROTTLE 1	1	
	8	4VP-F6260-01	.CABLE ASSY, THROTTLE & PUMP 1	1	
	9	4VP-F6321-01	.CABLE, PUMP	1	
	10	4VP-F6312-00	.CABLE, THROTTLE 2	1	
	11	4VP-F6262-00	.CAP, CABLE CONNECTOR	1	
	12	90167-03800	.SCREW, TAPPING	1	
	13	4VP-F6266-00	.BOOT, CYLINDER	1	
	14	98507-05010	SCREW, PAN HEAD	1	
	15	4VP-F6351-00	CABLE, BRAKE	1	
	16	4VP-F6393-00	HOLDER	1	
	17	4VP-F637G-00	HOLDER, WIRE	1	
	18	90179-06411	NUT	1	
	19	90249-12008	PIN	1	
	20	90501-165J7	SPRING, COMPRESSION	1	

FWD
4VP1414-7270

FIG. 24 FRONT MASTER CYLINDER

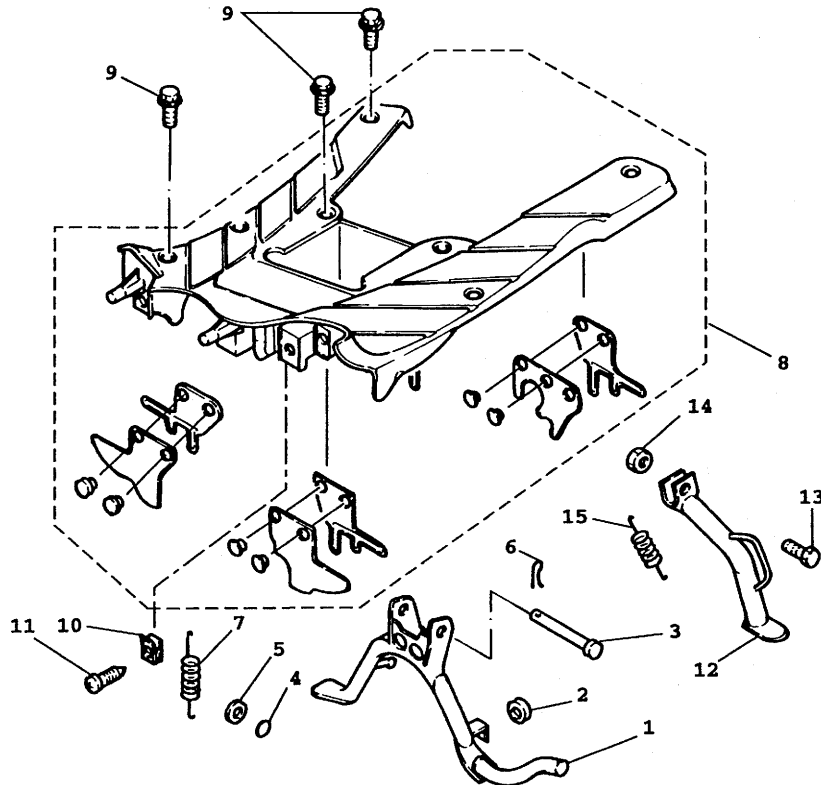
REF.

NO.	PART NO.	DESCRIPTION	Q'TY	REMARKS
1	4JL-F5870-00	MASTER CYLINDER SUB ASSY	1	
2	3GF-W0041-00	.CYLINDER KIT, MASTER	1	
3	3GF-F5854-00	.DIAPHRAGM, RESERVOIR	1	
4	3GF-F5852-00	.CAP, RESERVOIR	1	
5	98707-04012	.SCREW, FLAT HEAD (+)	2	
6	3GF-F5867-00	BRACKET, MASTER CYLINDER	1	
7	91317-06025	BOLT, HEX. SOCKET	2	
8	4WX-F5872-01	HOSE, BRAKE 1	1	
9	90401-10805	BOLT, UNION	2	
10	90201-10118	WASHER, PLATE	4	



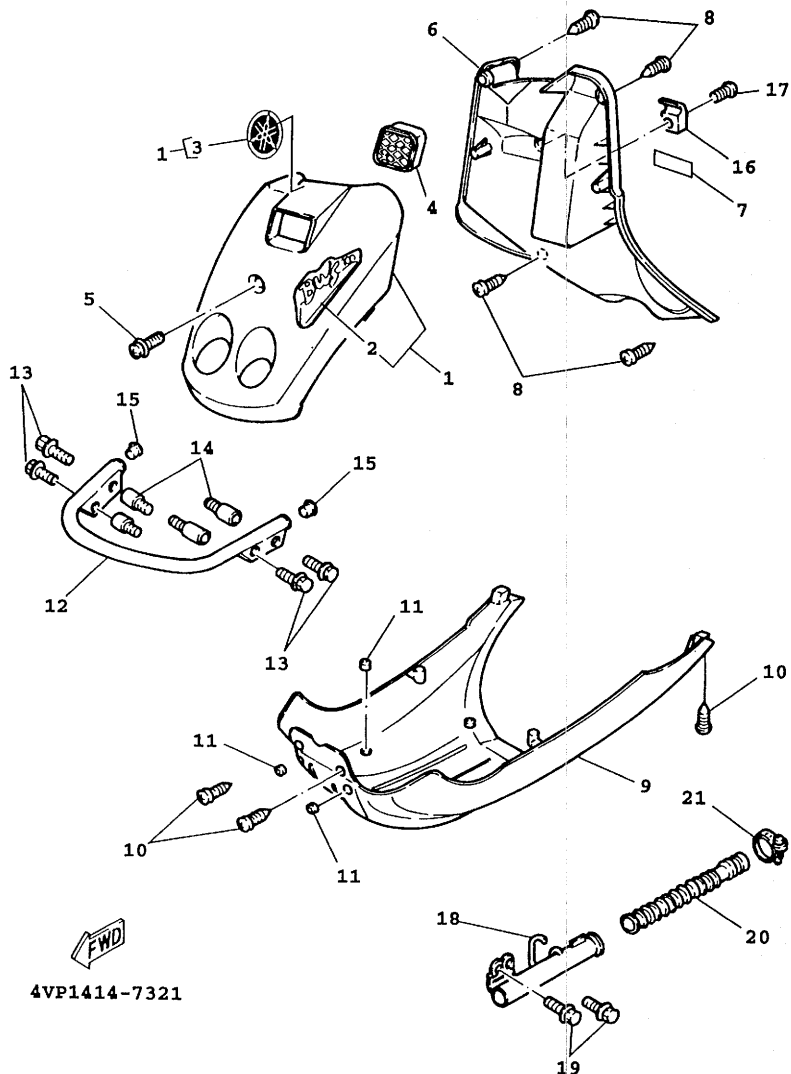
3XG4414-4240

FIG. 25 STAND. FOOTREST



REF.				
NO.	PART NO.	DESCRIPTION	QTY	REMARKS
1	4VP-F7111-01	STAND, MAIN	1	
2	4CW-F7114-00	STOPPER, MAIN STAND	1	
3	90240-10137	PIN, CLEVIS	1	
4	93210-108B1	O-RING	1	
5	90202-10120	WASHER, PLATE	1	
6	90468-12006	CLIP	1	
7	90506-32857	SPRING, TENSION	1	
8	4VP-X2748-00	BOARD ASSY, FOOTREST	1	
9	90119-06821	BOLT, WITH WASHER	6	
10	90183-05807	NUT, SPRING	8	
11	97707-50016	SCREW, TAPPING	2	
12	4VP-F7311-00	STAND, SIDE	1	
13	90109-10473	BOLT	1	
14	90185-10037	NUT, SELF-LOCKING	1	
15	90506-20298	SPRING, TENSION	1	

FWD
4VP1414-7300



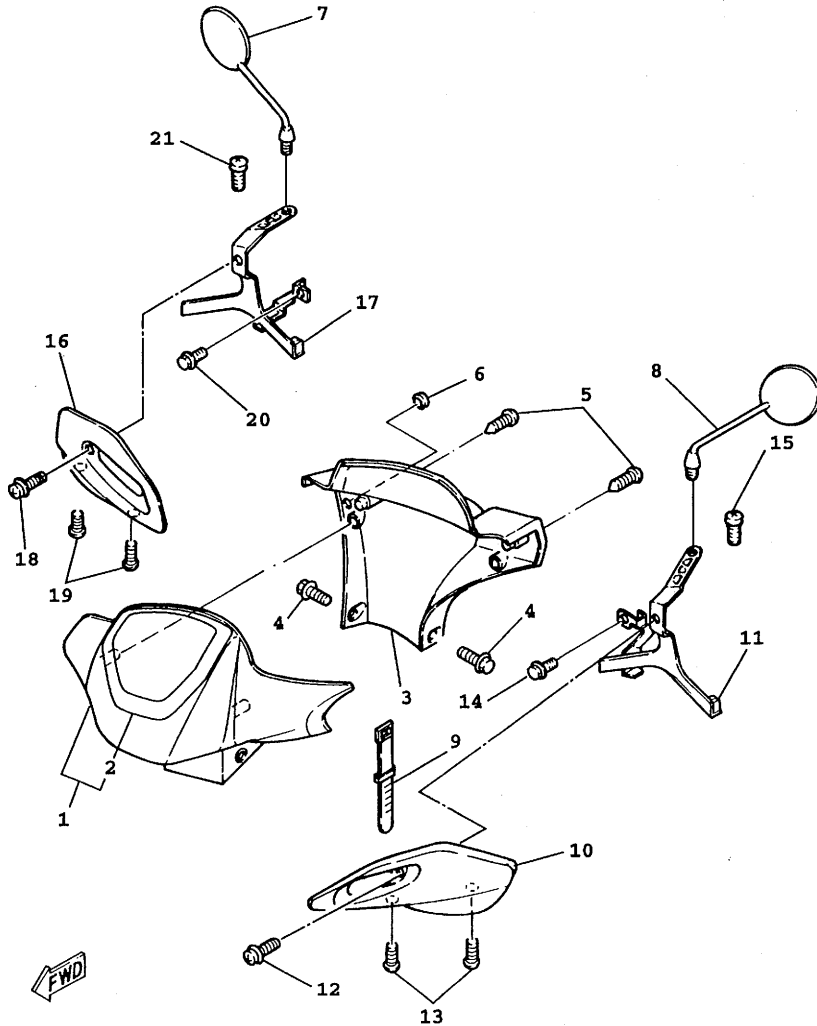
4VP1414-7321

FIG. 26 LEG SHIELD

REF.

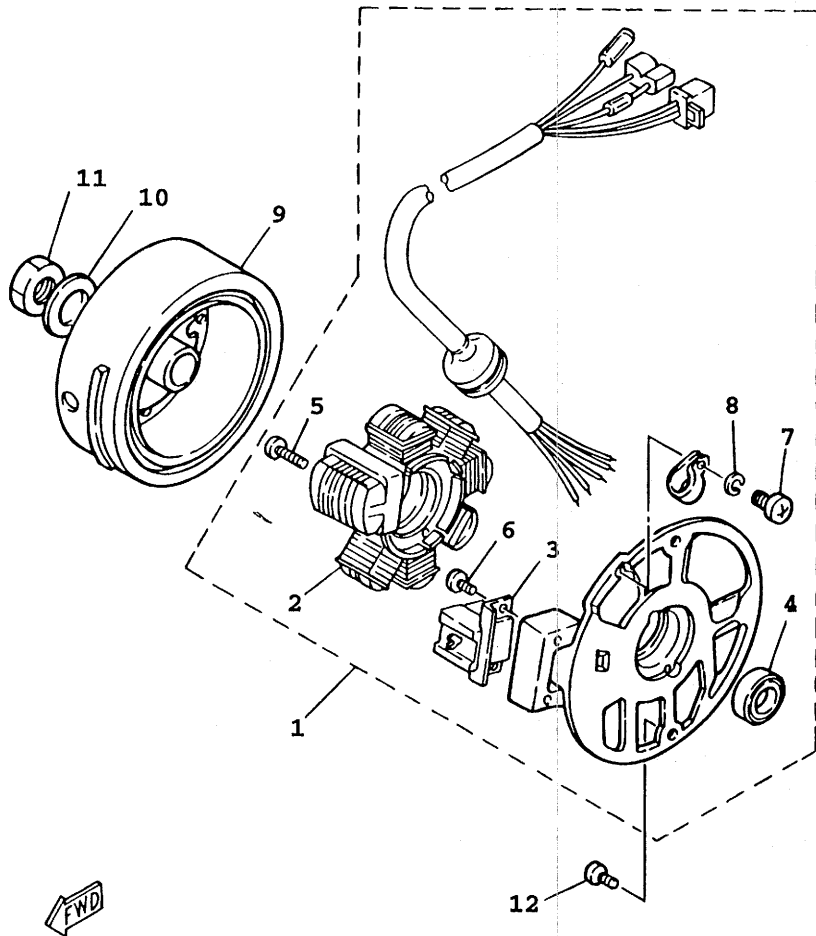
NO.	PART NO.	DESCRIPTION	Q'TY	REMARKS
1	4VP-X2831-50-4B	LEG SHIELD 1	1	UR BLACK
	4VP-X2831-30-P0	LEG SHIELD 1	1	UR DEEP PURPLISH BLUE
	4VP-X2831-10-P3	LEG SHIELD 1	1	UR VIVID YELLOW-SOLID 2
2	4VP-F1569-00	.GRAPHIC 1	1	UR BLACK
	4VP-F1599-B0	.GRAPHIC	1	UR DEEP PURPLISH BLUE
	4VP-F1569-60	.GRAPHIC 1	1	UR VIVID YELLOW-SOLID
3	4UF-F476G-00	.EMBLEM 2	1	
4	4VP-F834V-00	PROTECTOR 1	1	
5	90159-x6812	SCREW, WITH WASHER	1	
6	4VP-F8300-00	LEG SHIELD ASSY	1	
7	4JK-F1568-00	LABEL, WARNING	1	
8	97707-50016	SCREW, TAPPING	4	
9	4VP-F8385-01	COVER, LOWER	1	UR BLACK
	4VP-F8385-11	COVER, LOWER	1	UR DEEP PURPLISH BLUE UR VIVID YELLOW-SOLID
10	97707-50016	SCREW, TAPPING	4	
11	3GF-F6199-00	PLUG, BLIND	4	
12	4VP-F840K-00-33	GUARD COMP.	1	UR BLACK
	4VP-F840K-00-1V	GUARD COMP.	1	UR DEEP PURPLISH BLUE
	4VP-F840K-00-UJ	GUARD COMP.	1	UR VIVID YELLOW-SOLID
13	95027-06020	BOLT, FLG	4	
14	4VP-F1535-00	NUT 1	4	
15	90338-16148	PLUG	2	
16	4VP-F8257-01	HOOK 1	1	
17	90159-06812	SCREW, WITH WASHER	1	
18	4VP-F838K-00	BOX 1	1	
19	95807-06014	BOLT, FLG	2	
20	4VP-F1851-00	DUCT, COOLER	1	
21	90460-35260	CLAMP, HOSE	2	

FIG. 27 COWLING 1



4VP4414-8341

REF.	NO.	PART NO.	DESCRIPTION	Q'TY	REMARKS
	1	4VP-X2614-00-4B	COVER HANDLE 1	1	UR BLACK
		4VP-X2614-00-P0	COVER HANDLE 1	1	UR DEEP PURPLISH BLUE
		4VP-X2614-10-P3	COVER HANDLE 1	1	UR VIVID YELLOW-SOLID
	2	4VP-F6220-10	.GRAPHIC SET	1	
	3	4VP-F6145-00	COVER, HANDLEBAR UPPER 2	1	
	4	90159-05831	SCREW, WITH WASHER	2	
	5	90160-05803	SCREW, ROUND TAPPING	2	
	6	3GF-F6199-00	PLUG, BLIND	1	
	7	4VP-F6290-00	REAR VIEW MIRROR ASSY	1	
	8	4VP-F6280-00	REAR VIEW MIRROR ASSY	1	
	9	90465-13275	CLAMP	1	
	10	4VP-F6141-00	GUARD, BRUSH 1	1	UR BLACK
		4VP-F6141-20	GUARD, BRUSH 1	1	UR DEEP PURPLISH BLUE
		4VP-F6141-30	GUARD, BRUSH 1	1	UR VIVID YELLOW-SOLID
	11	4VP-F612M-01	BRKT. 4	1	
	12	90159-05820	SCREW, WITH WASHER	1	
	13	90149-05821	SCREW	2	
	14	95807-06012	BOLT, FLG	1	
	15	95807-08014	BOLT, FLG	1	
	16	4VP-F6142-00	GUARD, BRUSH 2	1	UR BLACK
		4VP-F6142-20	GUARD, BRUSH 2	1	UR DEEP PURPLISH BLUE
		4VP-F6142-30	GUARD, BRUSH 2	1	UR VIVID YELLOW-SOLID
	17	4VP-F612N-01	BRKT. 5	1	
	18	90159-05820	SCREW, WITH WASHER	1	
	19	90149-05821	SCREW	2	
	20	95807-06012	BOLT, FLG	1	
	21	4VP-F6225-00	BOLT, HANDLE	1	



3XG4414-4280

FIG. 28 GENERATOR

REF.

NO.	PART NO.	DESCRIPTION	Q'TY	REMARKS
1	3XG-H5560-00	BASE ASSY	1	
2	3GF-H1403-V0	.STATORCOMP.	1	
3	3GF-H5580-V0	.COIL, PULSER	1	
4	93104-19097	.SEAL, OIL	1	
5	98501-05020	.SCREW, PAN HEAD (+)	2	
6	9850L-05010	.SCREW, PAN HEAD(+)	2	
7	98580-04008	.SCREW, PAN HEAD (+)	1	
8	92901-04100	.WASHER, SPRING	1	
9	4KX-H5550-00	ROTOR ASSY	1	
10	92907-12600	WASHER, PLATE	1	
11	95307-12600	NUT, HEXAGON	1	
12	98507-06016	SCREW, PAN HEAD	2	

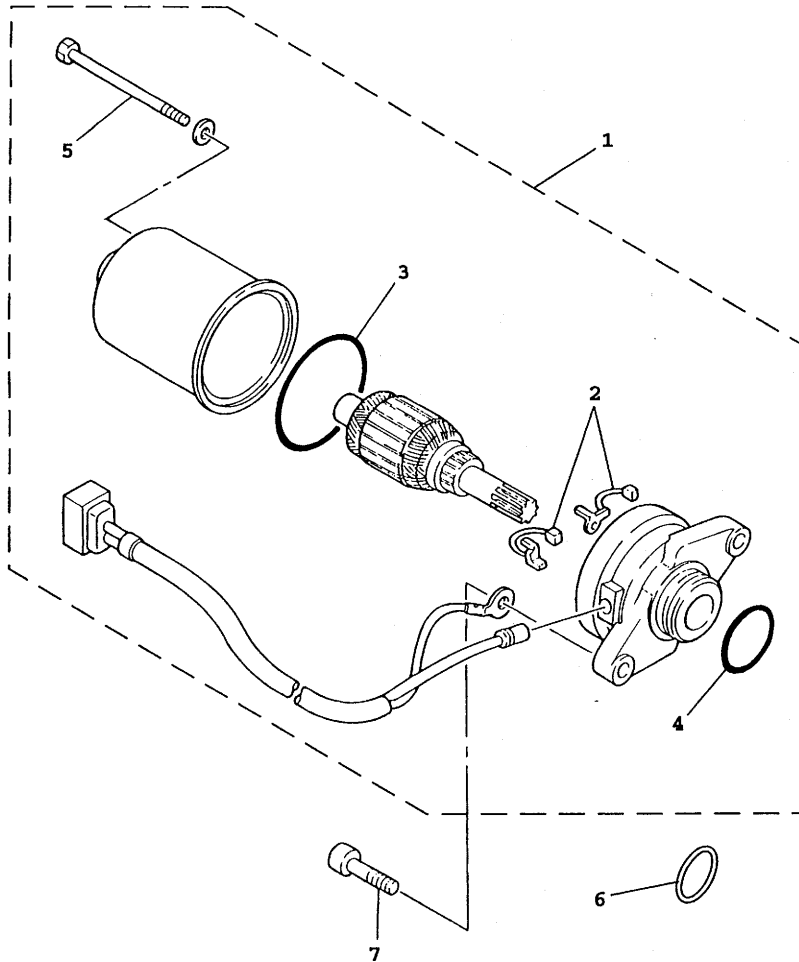


FIG. 29 STARTING MOTOR

REF.				
NO.	PART NO.	DESCRIPTION	Q'TY	REMARKS
1	4VP-H1800-00	STARTING MOTOR ASSY	1	
2	4DM-H1801-00	BRUSH SET	1	
3	93210-44678	O-RING	1	
4	93210-23614	O-RING	1	
5	3NW-H1828-V0	BOLT 2	2	
6	90202-26166	WASHER, PLATE	1	
7	91318-06020	BOLT	2	

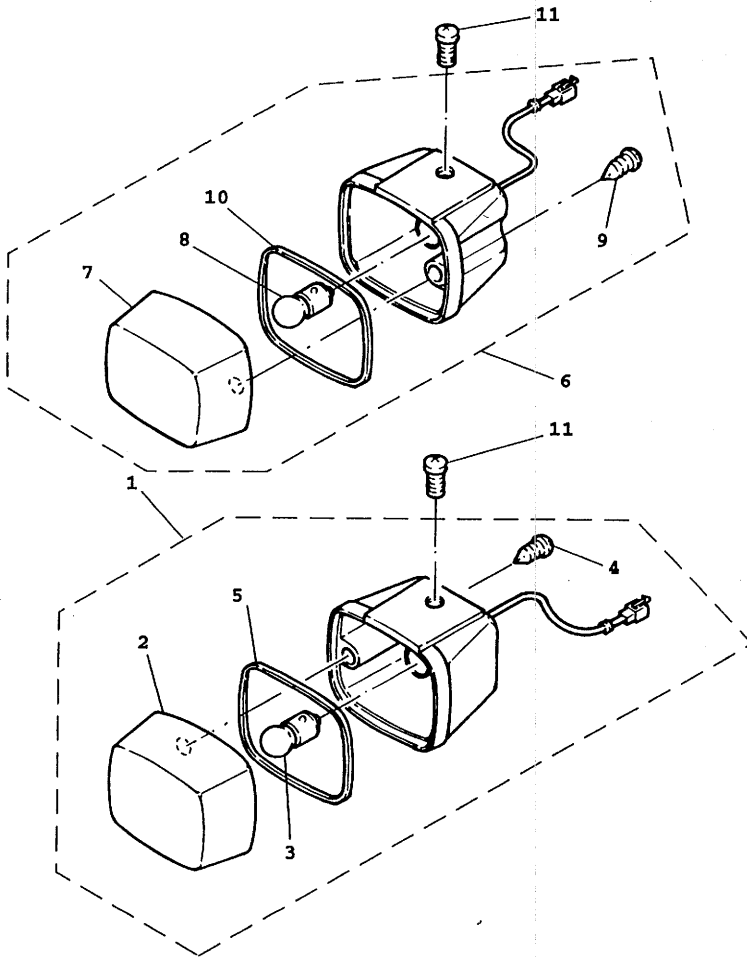


4VP1414-7371

FIG.30 FLASHER LIGHT

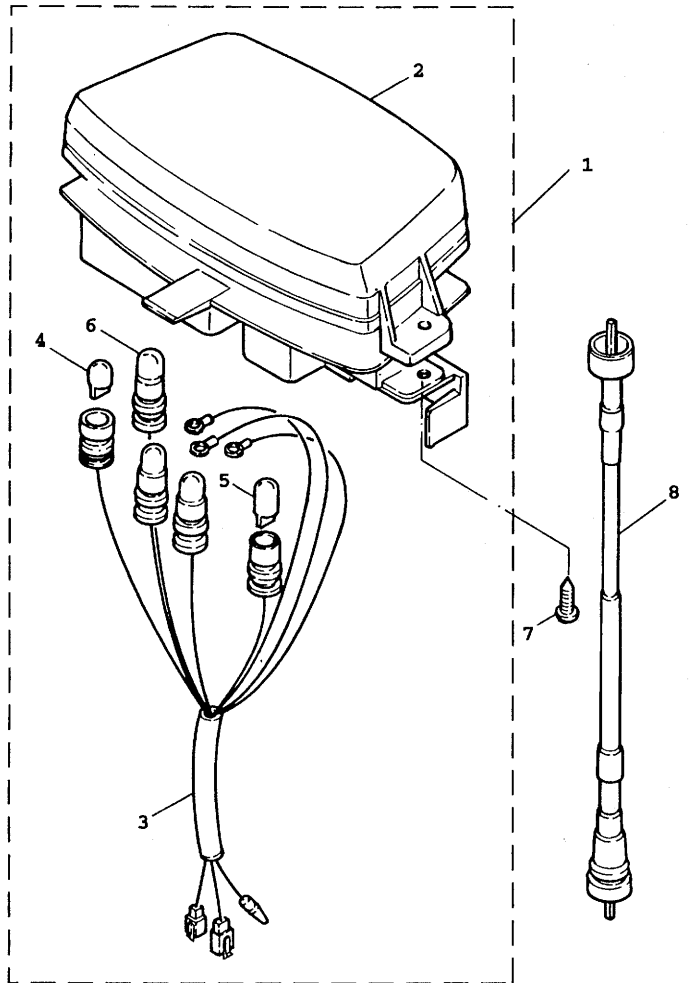
REF.

NO.	PART NO.	DESCRIPTION	Q'TY	REMARKS
1	4VP-H3310-00	FRONT FLASHER LIGHT ASSY 1	1	
2	4VP-H3312-00	.LENS, FLASHER	1	
3	4VP-H3311-00	.BULB, FLASHER	1	
4	97707-40610	.SCREW, TAPPING	1	
5	4VP-H3313-00	.GASKET, FLASHER LENS	1	
6	4VP-H3320-00	FRONT FLASHER LIGHT ASSY 2	1	
7	4VP-H3322-00	.LENS, FLASHER 2	1	
8	4VP-H3311-00	.BULB, FLASHER	1	
9	97707-40610	.SCREW, TAPPING	1	
10	4VP-H3313-00	.GASKET, FLASHER LENS	1	
11	98507-05010	SCREW, PAN HEAD	2	



4VP1414-7380

FIG. 31 METER



NO.	PART NO.	DESCRIPTION	Q'TY	REMARKS
1	4VP-H3510-00	SPEEDOMETER ASSY	1	
2	4VP-H353K-00	.GLASS PLATE	1	
3	4VP-H3509-00	.SOCKET CORD ASSY	1	
4	3GF-H3517-00	.BULB	3	
5	4VP-H3517-00	.BULB	1	
6	4TE-H3518-00	.BULB, METER	1	
7	97707-50016	SCREW, TAPPING	3	
8	4VP-H3550-01	SPEEDOMETER CABLE ASSY	1	

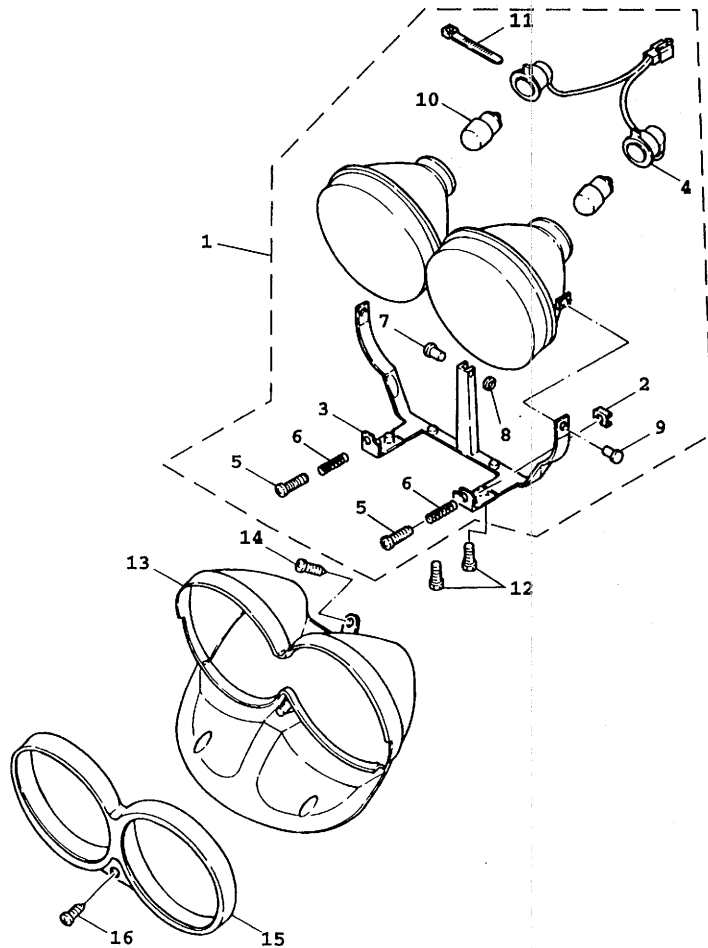
FWD

4VP1414-7391

FIG.32 HEADLIGHT

REF.

NO.	PART NO.	DESCRIPTION	Q'TY	REMARKS
1	4VP-H430A-00	HEADLIGHT NUIT	1	
2	4VP-H4317-00	.NUT	2	
3	4VP-H4318-00	.STAY, HEADLIGHT 1	1	
4	4VP-H4359-00	.CORD, HEADLIGHT	1	
5	4VP-H4331-00	.SCREW, RIM ADJUSTING	2	
6	4VP-H4332-00	.SPRING, SCREW	2	
7	4VP-H431V-00	.PIN	1	
8	4VP-H4198-00	.CLIP, COVER FITTING	1	
9	4VP-H4337-00	.BOLT, SPECIAL	2	
10	3UH-H4314-10	.BULB, HEADLIGHT	2	
11	4VP-H4351-00	.CLAMP, CORD	1	
12	95807-06016	BOLT, FLG	4	
13	4VP-H4144-00	COVER, HEADLIGHT	1	
14	97707-50012	SCREW, TAPPING	1	
15	4VP-H4169-00	GUARD, HEADLIGHT	1	
16	90163-05800	SCREW, TAPPING	1	



4VP1414-7401

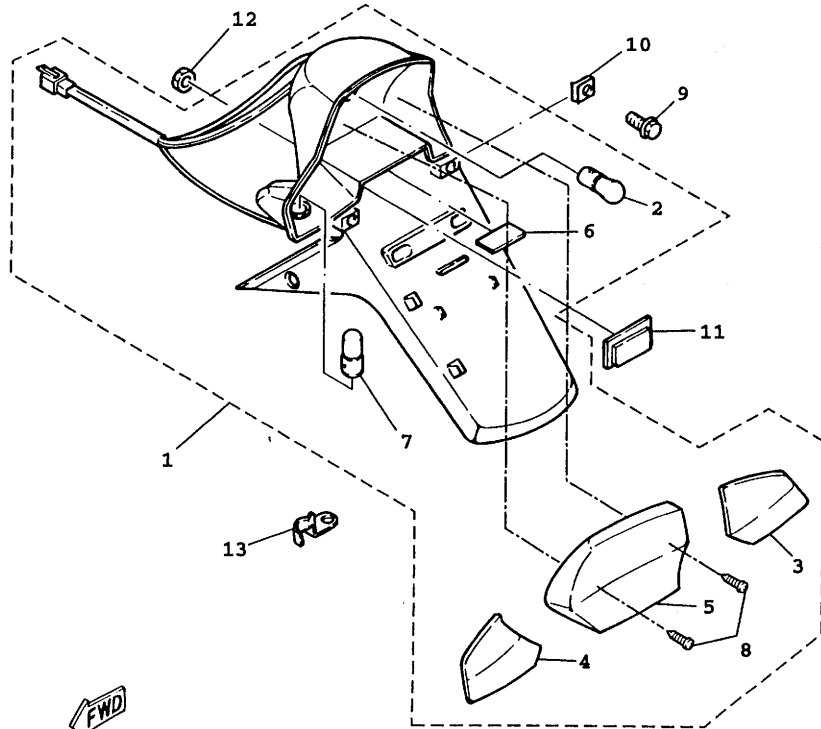


FIG.33 TAILLIGHT

REF.	NO.	PART NO.	DESCRIPTION	Q'TY	REMARKS
	1	4VP-H4700-00	TAILLIGHT ASSY	1	
	2	4TE-H4714-00	BULB	1	
	3	4VP-H3342-00	LENS, FLASHER 2	1	
	4	4VP-H3332-00	LENS, FLASHER	1	
	5	4VP-H4721-00	LENS, TAILLIGHT	1	
	6	4VP-H4743-00	LENS, LICENCE LIGHT	1	
	7	4VP-H3331-00	BULB, FLASHER	2	
	8	97707-40616	SCREW, TAPPING	2	
	9	90119-06079	BOLT, WITH WASHER	2	
	10	90183-05807	NUT, SPRING	4	
	11	3KW-H5130-00	REAR REFLECTOR ASSY	1	
	12	95707-05300	NUT, FLG	1	
	13	4VP-H4519-00	BRACKET, TAILLIGHT	1	

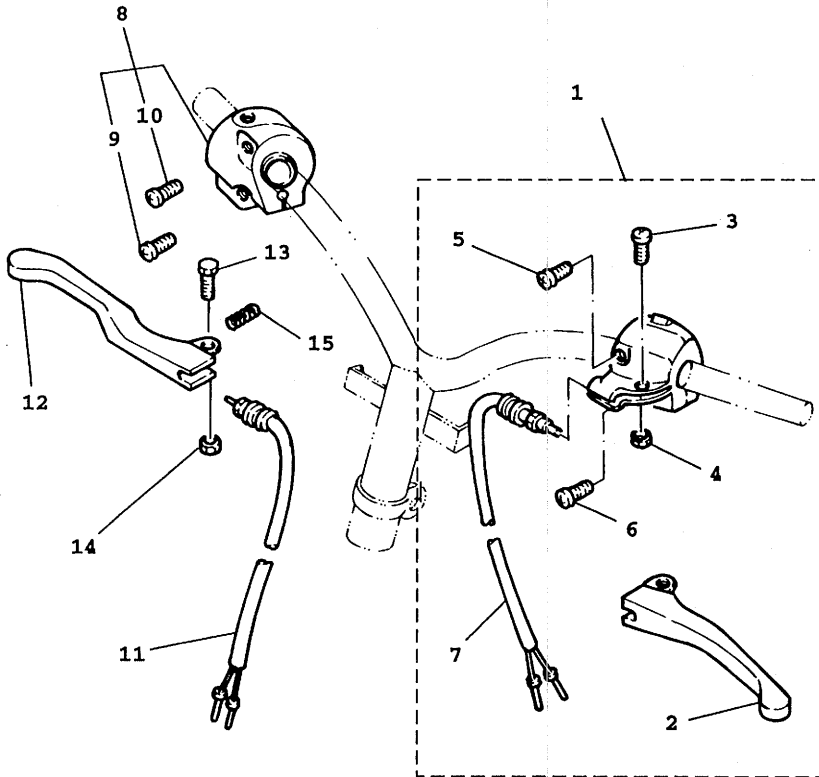
FWD

4VP5200-7330

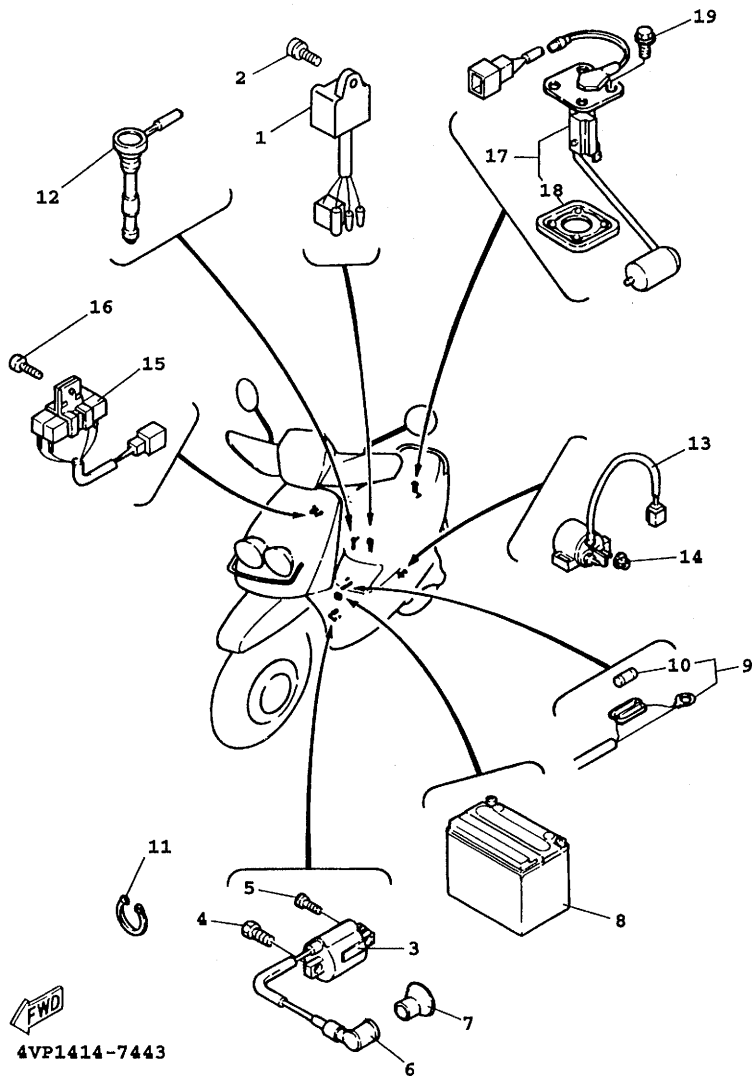
FIG. 34 HANDLE SWITCH. LEVER

REF.

NO.	PART NO.	DESCRIPTION	Q'TY	REMARKS
1	4VP-H2910-00	LEVER HOLDER ASSY (LEFT)	1	
2	4VP-H3912-00	.LEVER 1	1	
3	3XG-H3915-00	.SCREW, LEVER FITTING	1	
4	95607-05100	.NUT, U	1	
5	98507-05020	.SCREW, PAN HEAD	1	
6	98507-05030	.SCREW, PAN HEAD	1	
7	3XG-H3980-10	.FRONT STOP SWITCH ASSY	1	
8	3XG-H3975-30	SWITCH, HANDLE 2	1	
9	98506-05025	.SCREW, PAN HEAD (+)	1	
10	98506-05035	.SCREW, PAN HEAD (+)	1	
11	3GF-H3980-00	FRONT STOP SWITCH ASSY	1	
12	4VP-H3922-00	LEVER 2	1	
13	90109-06577	BOLT	1	
14	95607-06100	NUT, U	1	
15	90501-10312	SPRING, COMPRESSION	1	



4VP1414-7420



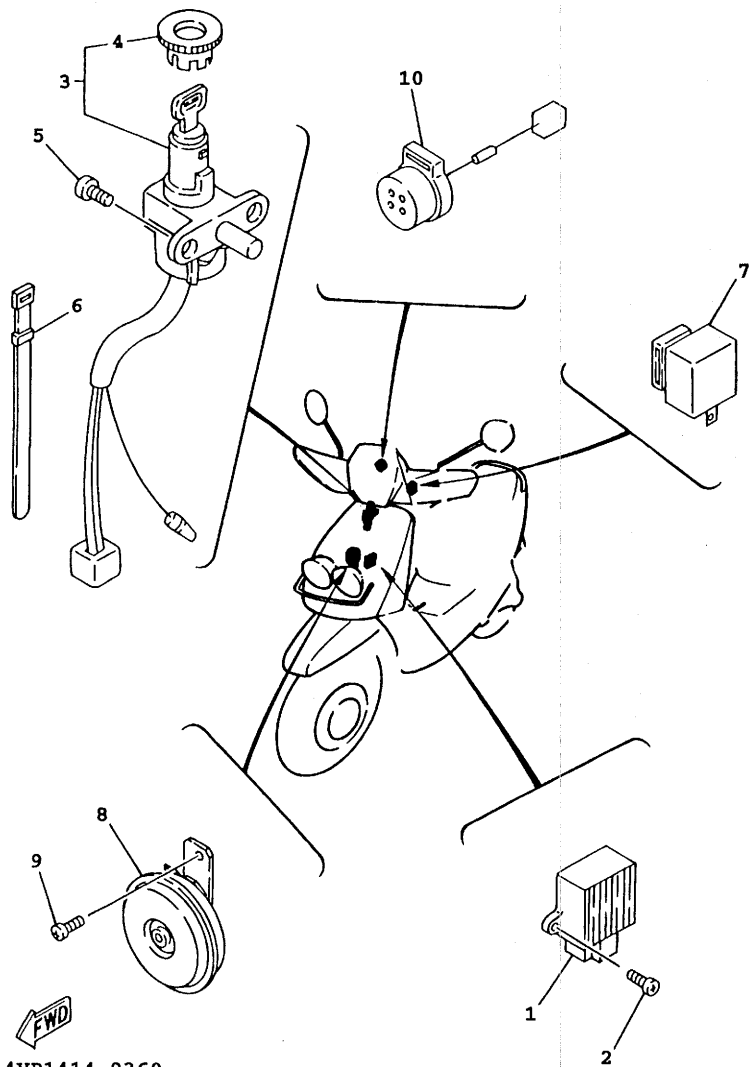
FWD

4VP1414-7443

FIG. 35 ELECTRICAL 1

REF.	NO.	PART NO.	DESCRIPTION	Q'TY	REMARKS
	1	4DM-H5540-00	C.D.I. UNIT ASSY	1	
	2	90159-06056	SCREW, WITH WASHER	1	
	3	4VP-H2310-01	IGNITION COIL ASSY	1	
	4	97007-06016	BOLT, HEX	1	
	5	90153-06839	SCREW, HEXAGON	1	
	6	4VP-H2370-00	PLUG CAP ASSY	1	
	7	4VP-H2372-00	SEAL, PLUG CAP	1	
	8	4EH-H2100-00	BATTERY ASSY	1	
	9	4VP-H2590-10	WIRE HARNESS ASSY	1	
	10	1NT-H2151-00	FUSE	1	
	11	90465-13275	CLAMP	2	
	12	4VP-H5720-00	OIL LEVEL GAUGE ASSY	1	
	13	3KW-H1940-01	STARTER RELAY ASSY	1	
	14	95307-06600	NUT, HEXAGON	2	
	15	3GF-H5370-01	RESISTOR ASSY	1	
	16	98507-06020	SCREW, PAN HEAD	1	
	17	4VP-X8575-00	SENDER ASSY	1	
	18	53X-H5753-00	GASKET, SENDER UNIT	1	
	19	90119-05071	BOLT, WITH WASHER	4	

FIG. 36 ELECTRICAL 2



4VP1414-9360

REF.				
NO.	PART NO.	DESCRIPTION	Q'TY	REMARKS
1	3GF-H1960-00	RECTIFIER & REGULATOR ASSY	1	
2	98507-05010	SCREW, PAN HEAD	2	
3	4VP-H2501-00	MAIN SWITCH STEERING LOCK	1	UR
4	4VP-H2552-00	.CAP, SWITCH	1	
5	9760L-06216	SCREW, W/WASHER	2	
6	23Y-H3936-00	BAND, SWITCH CORD	2	
7	1MH-H3350-V0	FLASHER RELAY ASSY	1	
8	4KP-H3371-01	HORN	1	
9	98507-06010	SCREW, PAN HEAD	1	
10	3XY-H3390-01	AUDIO PILOT ASSY	1	

NUMERICAL INDEX

REF.		REF.		REF.		REF.		REF.		REF.	
PART NO.	NO.	PART NO.	NO.	PART NO.	NO.	PART NO.	NO.	PART NO.	NO.	PART NO.	NO.
4VP-E1111-00	1 - 1	4VP-E5118-00	8 - 31	4JK-F1568-00	26 - 7	4TE-F3192-00	17 - 25	4VP-F6141-00	27 - 10	4VP-H2590-10	35 - 9
4VP-E1162-00	1 - 4	4VP-E5121-00	8 - 2	4VP-F1569-00	26 - 2	3GF-F3317-00	17 - 32	4VP-F6141-20	27 - 10	4VP-H2910-00	34 - 1
4VP-E1181-00	1 - 2	4VP-E5128-00	8 - 28	4VP-F1569-60	26 - 2	4WX-F3340-00	17 - 29	4VP-F6141-30	27 - 10	4VP-H3310-00	30 - 1
4VP-E1311-00	1 - 5	3XG-E5317-00	8 - 9	4VP-F1599-B0	26 - 2	3GF-F3346-00	17 - 28	4VP-F6142-00	27 - 16	4VP-H3311-00	30 - 3
5FA-E1351-00	1 - 6	4Y4-E5363-00	8 - 24	4VP-F1629-00	13 - 8	1MH-F3411-00	17 - 30	4VP-F6142-20	27 - 16	4VP-H3311-00	30 - 8
4VP-E1400-00	2 - 1	3XG-E5371-00	8 - 5	4VP-F1691-01	13 - 11	4TE-F3416-00	17 - 41	4VP-F6142-30	27 - 16	4VP-H3312-00	30 - 2
4VP-E1412-00	2 - 2	4VP-E5373-00	8 - 6	4VP-F171E-00-P0	14 - 16	4VP-F3418-00	17 - 40	4VP-F6145-00	27 - 3	4VP-H3313-00	30 - 5
4VP-E1422-00	2 - 6	4VP-E5411-00-33	8 - 17	4VP-F171E-00-P3	14 - 16	3KW-F3462-00	17 - 31	3GF-F6199-00	26 - 11	4VP-H3313-00	30 - 10
4VP-E1603-00	2 - 15	4VP-E5421-00	8 - 11	4VP-F171E-00-4B	14 - 16	4VP-F4110-10-33	18 - 1	3GF-F6199-00	27 - 6	4VP-H3320-00	30 - 6
4VP-E1631-10-A0	2 - 13	4VP-E5439-00	8 - 16	4VP-F1711-00	14 - 1	4VP-F414A-10	18 - 10	4VP-F6220-10	27 - 2	4VP-H3322-00	30 - 7
4VP-E1633-00	2 - 14	5DA-E5451-00	8 - 18	4VP-F173E-00	14 - 6	4VP-F4311-00	18 - 7	4VP-F6225-00	27 - 21	4VP-H3331-00	33 - 7
4VP-E1636-00	2 - 13	5DA-E5461-00	8 - 12	4VP-F173E-60	14 - 6	4CW-F4500-00	18 - 3	4VP-F6240-00	23 - 5	4VP-H3332-00	33 - 4
4VP-E1651-00	2 - 5	4SC-E5462-00	8 - 30	4VP-F173F-00	14 - 10	4CW-F452K-00	18 - 4	4VP-F6241-00	23 - 4	4VP-H3342-00	33 - 3
4DM-E1681-00	2 - 3	4VP-E5477-00	8 - 33	4VP-F173F-60	14 - 10	4VP-F4610-00	18 - 9	4VP-F6260-01	23 - 8	1MH-H3350-V0	36 - 7
4VP-E2611-00	3 - 12	4VP-E5512-00	9 - 7	4VP-F1733-00	15 - 3	4CW-F4726-01	19 - 3	4VP-F6262-00	23 - 11	4KP-H3371-01	36 - 8
4DY-E262H-00	3 - 4	4VP-E5524-00	9 - 1	4VP-F1734-00	15 - 4	4VP-F4726-00	19 - 5	4VP-F6266-00	23 - 13	3XY-H3390-01	36 - 10
3XG-E2631-00	3 - 15	3XG-E5532-00	9 - 11	4VP-F174G-B0	14 - 6	4VP-F473R-00	19 - 8	4VP-F6280-00	27 - 8	4VP-H3509-00	31 - 3
4VP-E2651-00	3 - 1	4CW-E5570-00	9 - 5	4VP-F174H-B0	14 - 10	4VP-F4730-00	19 - 1	4VP-F6290-00	27 - 7	4VP-H3510-00	31 - 1
4VP-E2653-00	3 - 3	4VP-E5601-00	9 - 13	4VP-F1741-00	14 - 13	4VP-F4738-00	19 - 13	4VP-F6311-00	23 - 7	3GF-H3517-00	31 - 4
4VP-E2658-00	3 - 10	3XG-E5620-00	9 - 18	4VP-F1745-00	15 - 7	4VP-F4742-00	19 - 10	4VP-F6312-00	23 - 10	4VP-H3517-00	31 - 5
4VP-E2659-00	3 - 11	4VP-E5630-00	9 - 20	4VP-F1751-00	15 - 1	4VP-F475M-00	19 - 2	4VP-F6321-01	23 - 9	4TE-H3518-00	31 - 6
4VP-E3100-00	4 - 1	4VP-E5650-00	9 - 6	4TE-F1753-00	18 - 11	4UF-F476G-00	26 - 3	1MH-F6329-00	6 - 23	4VP-H353K-00	31 - 2
3XG-E3342-00	9 - 9	4VP-E5659-00	8 - 19	4X6-F1771-02	15 - 6	4VP-F478E-00	19 - 17	4VP-F6351-00	23 - 15	4VP-H3550-01	31 - 8
4WX-E3555-10	5 - 6	4VP-E5673-00	9 - 21	4VP-F1851-00	26 - 20	4UE-F4780-01	19 - 15	4VP-F637G-00	23 - 17	4VP-H3912-00	34 - 2
3XG-E3575-01	5 - 8	4VP-E6611-00	10 - 15	4WX-F2210-10	6 - 1	4VP-F4812-01-UJ	19 - 18	4VP-F6393-00	23 - 16	3XG-H3915-00	34 - 3
4VP-E3610-00	5 - 1	4DM-E6620-00	10 - 5	4X6-F2216-00	8 - 3	4VP-F4812-01-1V	19 - 18	4VP-F7111-01	25 - 1	4VP-H3922-00	34 - 12
3XG-E3613-00	5 - 2	4CW-E6626-00	10 - 6	4WX-F3100-00	17 - 1	4VP-F4812-01-33	19 - 18	4CW-F7114-00	25 - 2	23Y-H3936-00	36 - 6
3XG-E3616-00	5 - 3	4VP-E7211-00	11 - 7	4WX-F3102-00	17 - 2	20A-F5115-00	20 - 3	4VP-F7311-00	25 - 12	3XG-H3975-30	34 - 8
4SC-E3621-00	5 - 5	4VP-E7410-00	11 - 1	4WX-F3103-00	17 - 15	4WX-F5180-01-33	20 - 1	45U-F8100-00	12 - 11	3GF-H3980-00	34 - 11
4VP-E4101-20	6 - 1	4VP-E7421-00	11 - 6	4WX-F3110-00	17 - 4	4WX-F5181-00	20 - 9	23Y-F8175-00	12 - 12	3XG-H3980-10	34 - 7
4VP-E4411-00	5 - 11	4VP-E7611-00	10 - 25	4WX-F3110-00	17 - 17	4WX-F5183-00	20 - 2	4VP-F8257-01	26 - 16	4VP-H4144-00	32 - 13
4VP-E4412-00	5 - 14	4VP-E7620-00	10 - 17	4JL-F3126-00	17 - 3	4VP-F5190-01	20 - 11	4VP-F8300-00	26 - 6	4VP-H4169-00	32 - 15
4VP-E443E-00	5 - 22	4VP-E7623-00	10 - 20	4JL-F3136-00	17 - 16	3UH-F5326-00	22 - 5	4VP-F834V-00	26 - 4	4VP-H4198-00	32 - 8
4VP-E4437-00	5 - 12	4VP-E7660-00	10 - 7	4WX-F3141-00	17 - 6	4VP-F533A-00	22 - 12	4VP-F838K-00	26 - 18	4VP-H430A-00	32 - 1
4VP-E4445-00	7 - 2	4DM-E7664-00	10 - 11	4WX-F3141-00	17 - 19	4WX-F5336-00	22 - 2	4VP-F8385-01	26 - 9	4VP-H431V-00	32 - 7
4VP-E4451-00	5 - 19	4VP-E7670-00	10 - 8	4JL-F3145-00	17 - 13	3UH-F5351-00	22 - 10	4VP-F8385-11	26 - 9	3UH-H4314-10	32 - 10
4VP-E4452-00	5 - 20	4DM-E7684-00	10 - 13	4JL-F3145-00	17 - 26	4WX-F5355-00	22 - 11	4VP-F840K-00-UJ	26 - 12	4VP-H4317-00	32 - 2
4VP-E4453-00	5 - 15	4VP-F1110-10-33	12 - 1	3GF-F3147-00	17 - 10	4WX-F5390-00-33	22 - 1	4VP-F840K-00-1V	26 - 12	4VP-H4318-00	32 - 3
4VP-E4462-00	5 - 17	3KW-F139X-00	19 - 12	3GF-F3147-00	17 - 23	3XG-F580T-01	21 - 4	4VP-F840K-00-33	26 - 12	4VP-H4331-00	32 - 5
4VP-E4463-00	5 - 16	4Y4-F139X-01	12 - 7	4WX-F3154-00	17 - 9	3XG-F582T-00	21 - 1	3GF-H1403-V0	28 - 2	4VP-H4332-00	32 - 6
4VP-E4467-00	5 - 18	4VP-F1410-10	12 - 6	4WX-F3154-00	17 - 22	3GF-F5852-00	24 - 4	4VP-H1800-00	29 - 1	4VP-H4337-00	32 - 9
4VP-E4610-20-98	7 - 1	3XG-F1481-00	12 - 2	3NW-F3156-00	17 - 14	3GF-F5854-00	24 - 3	4DM-H1801-00	29 - 2	4VP-H4351-00	32 - 11
3NT-E4613-01	7 - 6	4Y4-F1481-00	12 - 4	3NW-F3156-00	17 - 27	3GF-F5867-00	24 - 6	3NW-H1828-V0	29 - 5	4VP-H4359-00	32 - 4
4VP-E4627-00	7 - 11	4VP-F1511-00	13 - 1	3GF-F3158-00	17 - 7	4JL-F5870-00	24 - 1	3KW-H1940-01	35 - 13	4VP-H4519-00	33 - 13
4VP-E4708-00	7 - 10	4VP-F1511-40	13 - 1	3GF-F3158-00	17 - 20	4WX-F5872-01	24 - 8	3GF-H1960-00	36 - 1	4VP-H4700-00	33 - 1
4VP-E475M-00	7 - 16	4VP-F1511-70	13 - 1	4WX-F3170-00	17 - 5	3GF-F5875-10	17 - 33	4EH-H2100-00	35 - 8	4TE-H4714-00	33 - 2
3XY-E4766-00	7 - 21	4VP-F1514-00	12 - 9	4WX-F3170-00	17 - 18	3XG-F5919-01	21 - 8	1NT-H2151-00	35 - 10	4VP-H4721-00	33 - 5
4CW-E4766-00	7 - 13	4VP-F1519-01	13 - 6	3GF-F3181-00	17 - 8	3XG-F5919-11	21 - 9	4VP-H2310-01	35 - 3	4VP-H4743-00	33 - 6
4CW-E4766-00	7 - 19	4VP-F1519-41	13 - 6	3GF-F3181-00	17 - 21	3XG-F5926-01	21 - 10	4VP-H2370-00	35 - 6	3KW-H5130-00	33 - 11
4VP-E4779-00	7 - 3	2GF-F1535-00	14 - 4	4WX-F3191-00	17 - 11	4VP-F6110-01	23 - 1	4VP-H2372-00	35 - 7	3GF-H5370-01	35 - 15
4VP-E4799-00	7 - 15	4VP-F1535-00	26 - 14	4WX-F3191-00	17 - 24	4VP-F612M-01	27 - 11	4VP-H2501-00	36 - 3	4DM-H5540-00	35 - 1
4VP-E5111-00	8 - 1	4VP-F1552-00	13 - 4	4TE-F3192-00	17 - 12	4VP-F612N-01	27 - 17	4VP-H2552-00	36 - 4	4KX-H5550-00	28 - 9

NUMERICAL INDEX

PART NO.	REF. NO.	PART NO.	REF. NO.	PART NO.	REF. NO.	PART NO.	REF. NO.	PART NO.	REF. NO.	PART NO.	REF. NO.
3XG-H5560-00	28 - 1	3XG-14997-00	6 - 8	90201-06380	13 - 10	90480-16278	14 - 14	93310-418T0	2 - 4	9760L-06216	36 - 5
3GF-H5580-V0	28 - 3	14T-15657-00	10 - 27	90201-08088	9 - 10	90501-08845	4 - 12	93311-315Y2	11 - 2	97607-03206	5 - 4
4VP-H5720-00	35 - 12	4VP-16111-00	10 - 1	90201-10118	24 - 10	90501-10312	34 - 15	93315-108Y4	9 - 8	97607-04108	6 - 14
53X-H5753-00	35 - 18	4VP-17632-00	10 - 19	90201-142M6	22 - 14	90501-165J7	23 - 20	93410-20823	11 - 8	97607-04112	6 - 4
3GF-W0041-00	24 - 2	4VP-17641-00	10 - 24	90201-155G5	9 - 16	90501-29517	12 - 8	93450-16115	2 - 16	97607-06216	3 - 14
3GF-W0045-00	21 - 11	4CW-17653-10	10 - 21	90201-158K9	11 - 4	90501-430K3	10 - 12	93450-35015	9 - 3	97607-06220	3 - 8
3XG-W0047-00	21 - 6	22F-23411-01	17 - 35	90201-163G6	9 - 4	90506-16447	22 - 9	93501-04011	17 - 43	97607-06220	5 - 24
3XG-W0048-00	21 - 7	156-23412-00	17 - 42	90201-166L3	10 - 23	90506-20298	25 - 15	93503-16003	17 - 37	97607-06220	8 - 34
3XG-W0057-00	21 - 5	22F-23412-01	17 - 36	90201-203E7	22 - 16	90506-32857	25 - 7	93603-12827	4 - 16	97707-40514	3 - 5
4VP-W1441-00	5 - 10	90101-06878	22 - 13	90202-05193	18 - 6	90508-32768	9 - 14	93900-00802	20 - 7	97707-40610	30 - 4
4VP-W1442-00	5 - 13	90102-10031	16 - 3	90202-10120	25 - 5	91A10-07056	18 - 12	93900-00802	22 - 4	97707-40610	30 - 9
3UH-W2341-01	17 - 44	90105-08121	16 - 2	90202-26142	17 - 39	91317-06016	19 - 20	94112-108S3	20 - 6	97707-40616	33 - 8
4VP-W2620-01	23 - 6	90105-10036	23 - 2	90202-26166	29 - 6	91317-06025	8 - 21	94113-108S4	22 - 3	97707-50012	13 - 12
4VP-X2172-00-P0	14 - 5	90109-063F1	19 - 11	90208-12050	10 - 28	91317-06025	24 - 7	94700-00825	1 - 3	97707-50012	14 - 2
4VP-X2172-00-4B	14 - 5	90109-06577	34 - 13	90208-15807	11 - 5	91317-06035	8 - 22	95027-06020	26 - 13	97707-50012	14 - 8
4VP-X2172-10-P3	14 - 5	90109-10473	25 - 13	90209-18112	2 - 7	91317-06045	8 - 23	95307-06600	35 - 14	97707-50012	14 - 11
4VP-X2173-00-P0	14 - 9	90110-10811	21 - 2	90214-14054	10 - 26	91317-06045	19 - 19	95307-12600	28 - 11	97707-50012	14 - 15
4VP-X2173-00-4B	14 - 9	90116-07834	1 - 7	90240-10137	25 - 3	91318-06020	5 - 7	95307-12700	10 - 29	97707-50012	14 - 17
4VP-X2173-10-P3	14 - 9	90119-05071	35 - 19	90241-10015	19 - 7	91318-06020	8 - 15	95607-05100	34 - 4	97707-50012	32 - 14
4WX-X2533-00	22 - 8	90119-06079	33 - 9	90249-12008	23 - 19	91318-06020	29 - 7	95607-06100	34 - 14	97707-50016	13 - 7
4VP-X2614-00-P0	27 - 1	90119-06802	15 - 2	90280-03017	2 - 8	91318-06035	8 - 8	95607-10200	12 - 5	97707-50016	13 - 13
4VP-X2614-00-4B	27 - 1	90119-06821	13 - 2	90338-16148	26 - 15	91318-06035	8 - 14	95607-10200	20 - 8	97707-50016	25 - 11
4VP-X2614-10-P3	27 - 1	90119-06821	25 - 9	90380-15817	9 - 15	92901-04100	28 - 8	95607-10200	23 - 3	97707-50016	26 - 8
4VP-X2748-00	25 - 8	90149-05821	27 - 13	90387-068F8	13 - 3	92907-06200	7 - 17	95607-12200	12 - 3	97707-50016	26 - 10
4VP-X2831-10-P3	26 - 1	90149-05821	27 - 19	90387-068J5	3 - 6	92907-06600	19 - 21	9570L-10500	21 - 3	97707-50016	31 - 7
4VP-X2831-30-P0	26 - 1	90149-06011	18 - 5	90387-068J5	5 - 25	92907-12600	28 - 10	97707-05300	33 - 12	97707-50125	5 - 21
4VP-X2831-50-4B	26 - 1	90149-06810	7 - 7	90387-104U5	20 - 10	92990-06600	7 - 4	95707-06500	18 - 2	97707-60540	3 - 9
4VP-X8575-00	35 - 17	90153-06839	35 - 5	90387-168N7	10 - 22	93101-20169	2 - 11	95707-06500	19 - 4	9850L-05010	28 - 6
3YR-11605-00	2 - 15	90159-05820	27 - 12	90387-178N6	2 - 12	93101-21170	10 - 18	95707-06500	19 - 6	98507-05020	34 - 5
3AA-13124-00	4 - 5	90159-05820	27 - 18	90401-10805	24 - 9	93102-17467	10 - 3	95707-06500	19 - 14	98506-05025	34 - 9
4VP-13178-00	4 - 15	90159-05831	27 - 4	90430-08119	8 - 27	93102-17838	20 - 4	95707-10500	16 - 4	98506-05035	34 - 10
3WF-13185-00	4 - 2	90159-06056	35 - 2	90445-05431	4 - 10	93102-22464	2 - 10	95707-10500	22 - 6	98507-03006	6 - 15
1YU-13187-00	4 - 3	90159-06812	26 - 5	90445-078A3	18 - 14	93102-25270	11 - 10	95807-06010	17 - 34	98507-04012	6 - 21
1YU-13473-00	4 - 4	90159-06812	26 - 17	90445-09124	4 - 8	93104-19097	28 - 4	95807-06012	13 - 5	98507-05010	23 - 14
1YU-13516-00	4 - 6	90159-06822	14 - 3	90445-105H0	18 - 15	93104-33117	10 - 9	95807-06012	13 - 9	98507-05010	30 - 11
1YU-13577-00	4 - 7	90160-05803	27 - 5	90460-27815	15 - 8	93210-07890	22 - 7	95807-06012	27 - 14	98507-05010	36 - 2
3XG-14103-00	6 - 18	90163-05800	32 - 16	90460-35260	26 - 21	93210-108B1	25 - 4	95807-06012	27 - 20	98507-05014	4 - 14
3MB-14104-00	6 - 12	90167-03800	23 - 12	90460-41191	5 - 27	93210-14805	8 - 25	95807-06014	26 - 19	98507-05020	34 - 5
3XG-14107-00	6 - 19	90176-06065	7 - 18	90464-16801	4 - 11	93210-23614	29 - 4	95807-06016	32 - 12	98507-05030	34 - 6
4VP-14112-35	6 - 5	90179-06411	23 - 18	90465-13275	27 - 9	93210-368G9	10 - 10	95807-08014	27 - 15	98507-06010	36 - 9
52W-14131-00	6 - 3	90179-07381	1 - 8	90465-13275	35 - 11	93210-44678	29 - 3	95807-08016	8 - 26	98507-06012	8 - 29
18A-1414A-65	6 - 9	90179-10609	10 - 16	90467-08003	4 - 9	93210-64893	3 - 13	95807-08035	12 - 10	98507-06012	8 - 32
4VP-14141-11	6 - 7	90179-25615	17 - 38	90467-09006	18 - 8	93306-003Y4	8 - 4	95817-08020	7 - 8	98507-06012	9 - 12
193-14142-35	6 - 11	90179-28415	10 - 14	90467-09006	18 - 13	93306-003Y4	9 - 2	95817-08030	7 - 9	98507-06016	28 - 12
52W-14147-00	6 - 17	90183-05807	13 - 14	90467-11823	5 - 23	93306-004X7	11 - 9	95827-08030	21 - 12	98507-06020	35 - 16
522-14161-00	6 - 22	90183-05807	14 - 7	90467-24140	5 - 9	93306-200Y1	10 - 4	97007-06016	19 - 16	98580-04008	28 - 7
4VP-14171-00	6 - 16	90183-05807	14 - 12	90468-02033	4 - 13	93306-200Y1	11 - 3	97007-06016	35 - 4	98707-04012	24 - 5
53L-14186-00	6 - 20	90183-05807	19 - 9	90468-12006	16 - 5	93306-203YE	10 - 2	97017-06010	7 - 12	98980-06010	7 - 20
12R-14191-00	6 - 13	90183-05807	25 - 10	90468-12006	25 - 6	93306-203YE	11 - 12	97017-06025	9 - 19	99009-15400	9 - 17
3XG-14196-00	6 - 10	90183-05807	33 - 10	90480-11866	3 - 2	93306-205Y6	2 - 9	97380-06008	7 - 5	99009-17400	8 - 10
3XG-14198-00	6 - 2	90185-10037	25 - 14	90480-12497	3 - 7	93306-300Y4	20 - 5	97507-05510	15 - 5	99009-19400	4 - 17
4VP-1490J-00	6 - 6	90185-14124	22 - 15	90480-12497	5 - 26	93310-21403	2 - 17	97517-06510	7 - 14	99009-42500	11 - 11

NUMERICAL INDEX

PART NO.	REF. NO.
99530-10114	8 -13
99530-10114	8 -20
99530-12016	8 - 7

PART NO.	REF. NO.
----------	----------

PART NO.	REF. NO.
----------	----------

PART NO.	REF. NO.
----------	----------

PART NO.	REF. NO.
----------	----------

PART NO.	REF. NO.
----------	----------





BEST CHOICE

YAMAHA

台灣山葉機車工業股份有限公司 部品部

1999.03.02×1.10