



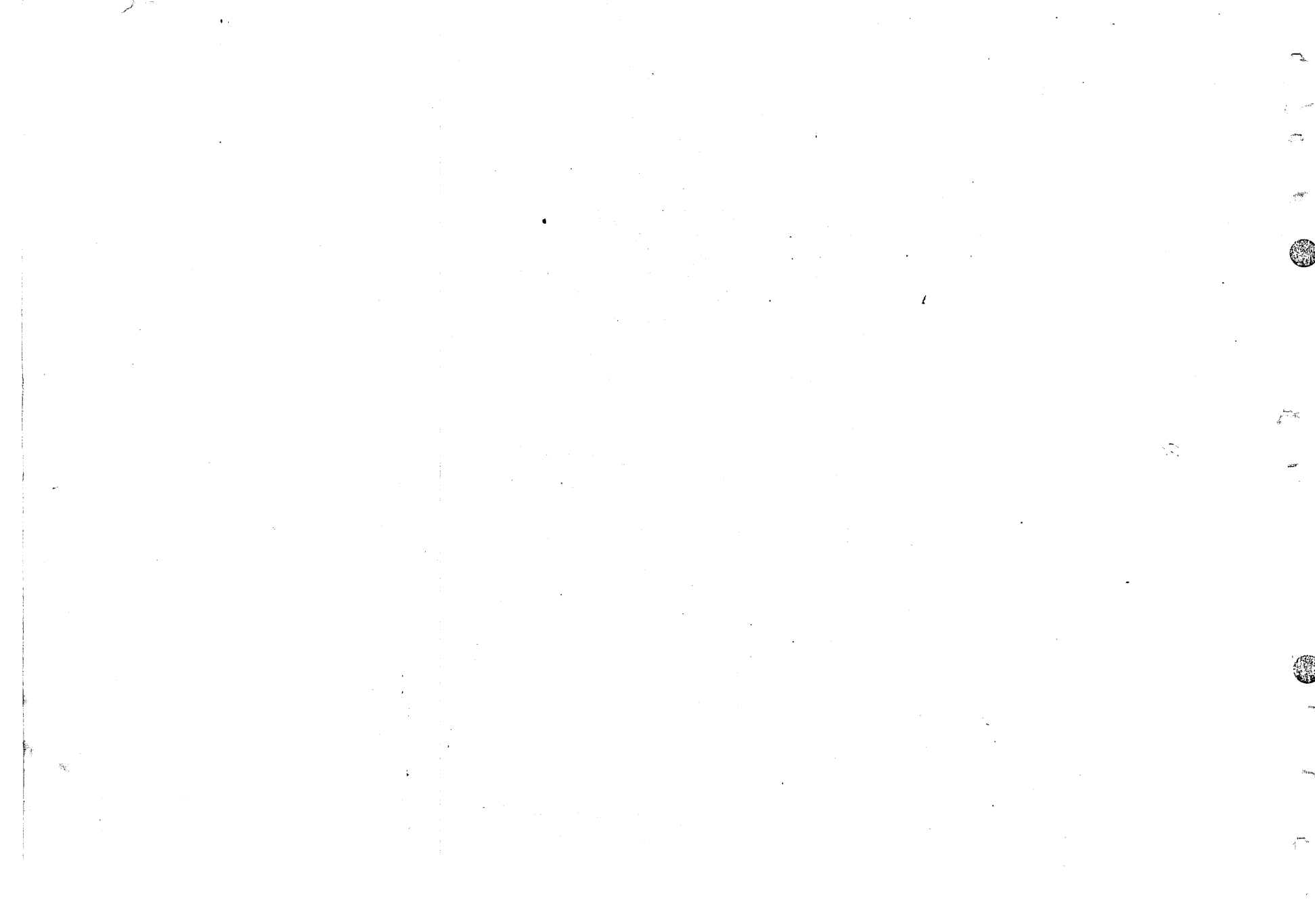
YAMAHA

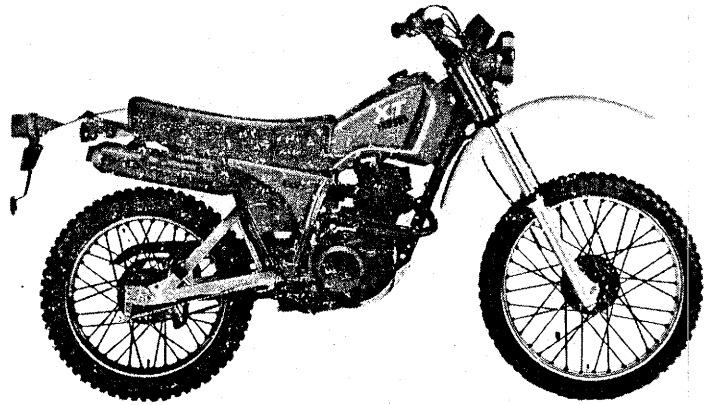
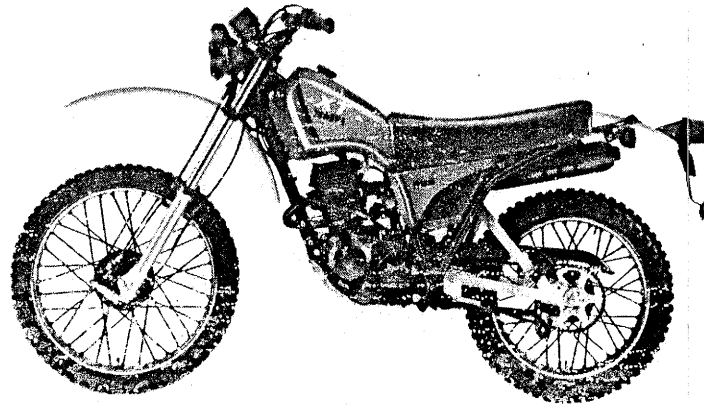
PARTS CATALOGUE

XT200J (15Y)

1215Y-700E1

A2





A3

FOREWORD

This Parts Catalogue is related to the parts in use for the Yamaha XT200J (15Y).
When you are ordering replacement parts for the XT200J (15Y), refer to this Parts Catalogue and quote both part numbers and part names correctly.

1. Modifications or additions which have been made after issue of the Parts Catalogue will be announced in the Yamaha Parts News.
It is advisable that according to the Yamaha Parts News you make necessary corrections to the Parts Catalogue on hand to keep it up-to-date.

2. Abbreviations

The following abbreviations are used in this Parts Catalogue.

- U.R. Use size (thickness) and/or number as required.
- U.N. Use as many as you need.
- A.P. Alternate Parts
- L.M. Local Made
- F# Frame No. (Applicable machine No.)

3. The parts marked with (*) in the parts number column of this Catalogue are not supplied with by Yamaha, those have to be found locally.
4. Parts, which are to be supplied in the form of assemblies, are listed with an indentation of one letter's space, and a dot (.) is put against the name of each part.

EXAMPLE
 CARBURETOR ASS'Y
 . JET, pilot
 . NOZZLE, main

5. Indication of No. of constituent parts for assembly

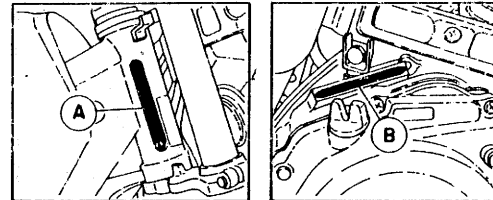
The numeral appearing to the right of each constituent part under the description indicates the quantity of such parts for each individual assembly unit.

EXAMPLE

Part No.	Description	Q'ty	Remarks
2F5-83310-60	FRONT FLASHER LIGHT ASS'Y	2	
115-83311-60	BULB (6V-18W)	1	
1M1-83309-60	REFLECTOR	1	

6. Initial Serial No. and Color Code

(A) Frame Serial No.	15Y-000101 and following
(B) Engine Serial No.	15Y-000101 and following



Color Code	Color Name	Abbreviate
E1	Chappy Red	CPR

7. Applicable colors of graphics are represented in the "Remarks" column by the letter(s) appropriately picked out of the full word(s) showing such colors.

EXAMPLE

Part No.	Description	Q'ty	Remarks
2N4-24110-00-X5	FUEL TANK COMP.	1	MAXIM RED
3J1-24240-10	GRAPHIC, fuel tank set	1	for MXR

CONTENTS

ENGINE

Cylinder Head	B2
Cylinder	B3
Crankshaft · Piston	B4 ~ B5
Valve	B6
Camshaft · Chain	B7
Oil Pump	B8
Intake	B9 ~ B10
Carburetor	B11
Exhaust	B12
Crankcase	B13
Crankcase Cover	B14
A.C. Generator	B15
Kick Starter	C2
Clutch	C3
Transmission	C4
Shift Cam · Fork	C5
Shift Shaft · Pedal	C6

CHASSIS

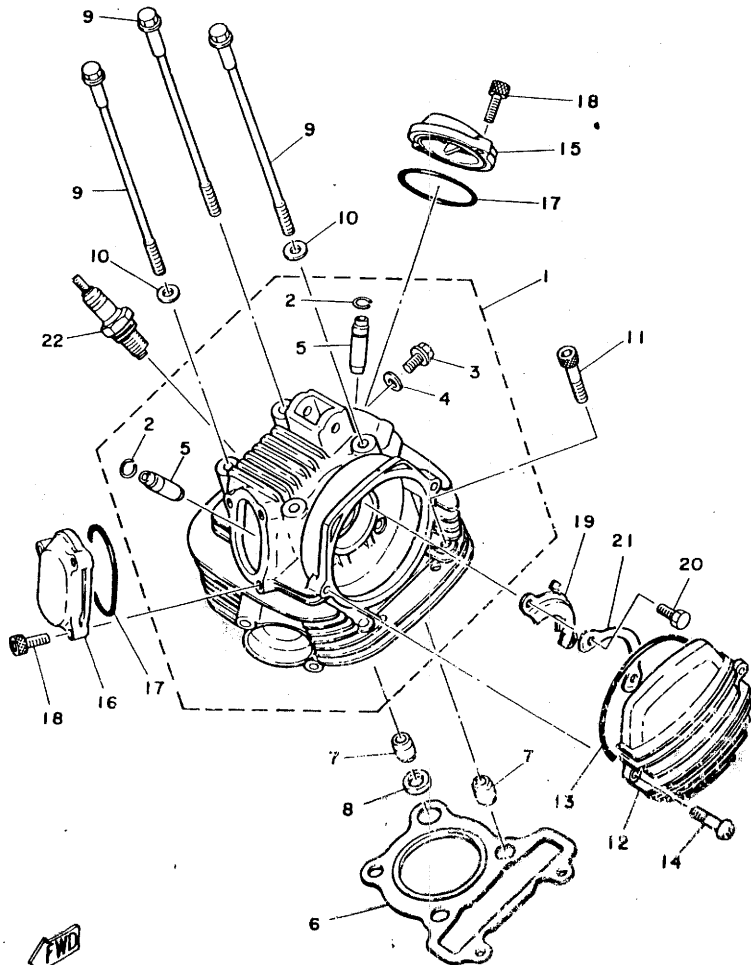
Frame	C7
Front Fender · Rear Fender	C8
Side Cover · Tool	C9
Rear Arm	C10
Rear Suspension	C11
Steering	C12
Front Fork	C13 ~ C14
Fuel Tank	C15
Seat	D2
Front Wheel	D3 ~ D4

Rear Wheel	D5 ~ D6
Handlebar · Cable	D7
Stand · Footrest	D8 ~ D9
Flasher Light	D10
Speedometer	D11
Headlight	D12
Taillight	D13
Electrical 1	D14
Electrical 2	D15
Handle Switch · Lever	E2

INDEX

Numerical Index	M1 ~ M3
Parts Name Index	M11 ~ M16

FIG. 1 CYLINDER HEAD



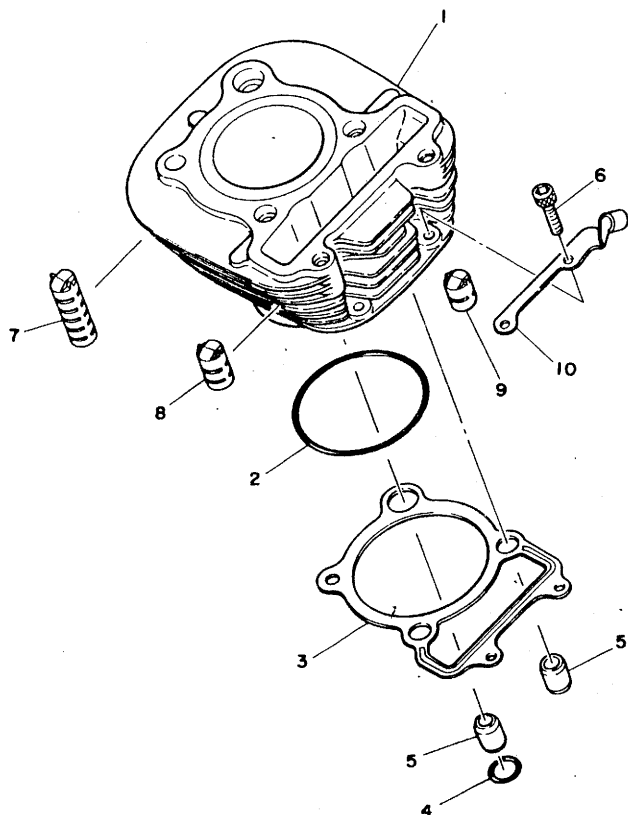
REF. NO.	PART NO.	DESCRIPTION	Q'TY	REMARKS
1	15A-11110-00	CYLINDER HEAD ASSY	1	
2	93440-10085	.CIRCLIP	2	
3	90153-06029	.SCREW, hexagon	1	
4	90430-06014	.GASKET	1	
5	5H0-11133-10	.GUIDE, intake valve (1ST D/S)	2	
6	15A-11181-00	GASKET, cylinder head 1	1	
7	91830-24016	PIN, dowel	3	
8	90430-14131	GASKET	1	
9	90105-08195	BOLT, washer based	4	
10	90201-08609	WASHER, Plate	3	
11	91316-08045	BOLT	2	
12	15A-11185-00	COVER, cylinder head side 1	1	
13	93211-05471	O-RING	1	
14	92506-06020	SCREW, Pan head	2	
15	15A-11186-00	COVER, cylinder head side 2	1	
16	15A-11187-00	COVER, cylinder head side 3	1	
17	93210-57412	O-RING	2	
18	91316-06013	BOLT	5	
19	5H0-1111F-00	PLATE	1	
20	97301-06012	BOLT	2	
21	90215-06184	WASHER, lock	1	
22	94701-00157	PLUG, sPark (NGK D6EA)	1	UR
	94701-00181	PLUG, sPark (ND X24ES-U)	1	UR



15X171-2010

B2

FIG. 2 CYLINDER



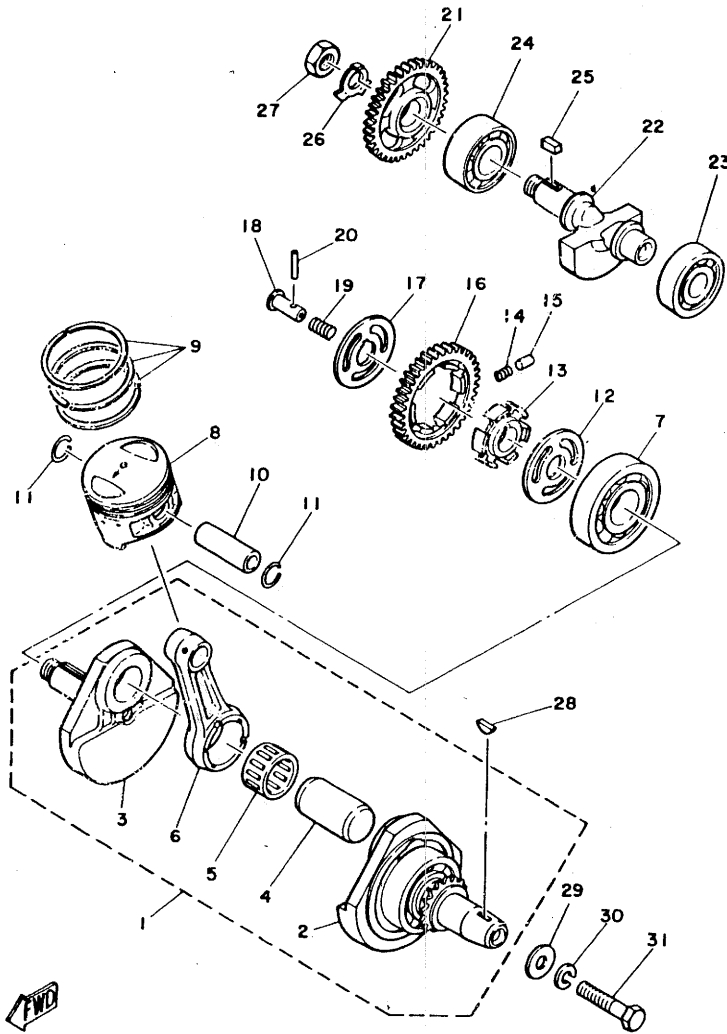
REF. NO.	PART NO.	DESCRIPTION	Q'TY	REMARKS
1	15A-11310-00	CYLINDER	1	
2	93210-72529	O-RING	1	
3	15A-11351-00	GASKET, cylinder	1	
4	93210-13361	O-RING	1	
5	91830-24016	PIN, dowel	2	
6	91316-06030	BOLT	2	
7	5H0-11161-00	ABSORBER 1	2	
8	5H0-11162-00	ABSORBER 2	2	
9	15A-11161-00	ABSORBER 1	1	
10	15A-15441-00	HOLDER, clutch cable	1	



15X171-2020

B3

FIG. 3 CRANKSHAFT-PISTON

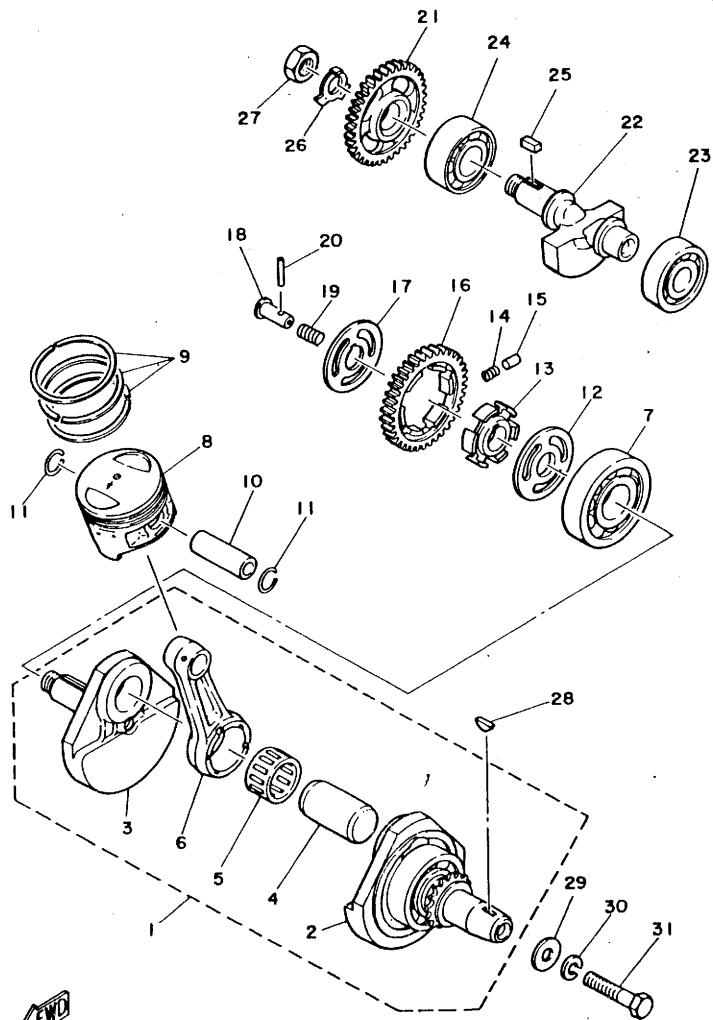


REF. NO.	PART NO.	DESCRIPTION	Q'TY	REMARKS
1	15A-11400-00	CRANKSHAFT ASSY	1	
2	15A-11412-09	•CRANK 1	1	
3	5H0-11422-00	•CRANK 2	1	
4	5H0-11681-00	•PIN, crank 1	1	
5	93310-E30J3	•BEARING, cylindrical	1	
6	15A-11651-00	•ROD, connecting	1	
7	93306-30615	BEARING (B6306)	1	
8	15A-11631-00	PISTON (STD)	1	
	15A-11636-00	PISTON (2ND O/S 0.50MM)	1	AP
	15A-11638-00	PISTON (4TH O/S 1.00MM)	1	AP
9	15A-11610-00	PISTON RING SET (STD)	1	
	15A-11610-20	PISTON RING SET (2ND O/S)	1	AP
	15A-11610-40	PISTON RING SET (4TH O/S)	1	AP
10	15A-11633-00	PIN, Piston	1	
11	93450-17044	CIRCLIP	2	
12	90201-201E4	WASHER, Plate	1	
13	5H0-11496-00	BOSS, buffer	1	
14	90501-21133	SPRING, compression	6	
15	93605-10090	PIN, dowel	3	
16	5H0-11536-00	GEAR, drive (38T)	1	
17	90214-20023	WASHER, claw	1	
18	90240-07083	PIN, clevis	1	
19	90501-07629	SPRING, compression	1	
20	93602-13177	PIN, dowel	1	
21	5H0-11531-00	GEAR, balance wt (36T)	1	
22	15A-11454-00	WEIGHT 1	1	
23	93306-30426	BEARING	1	
24	93306-30427	BEARING	1	

15X171-2030

B4

FIG. 3 CRANKSHAFT.PISTON



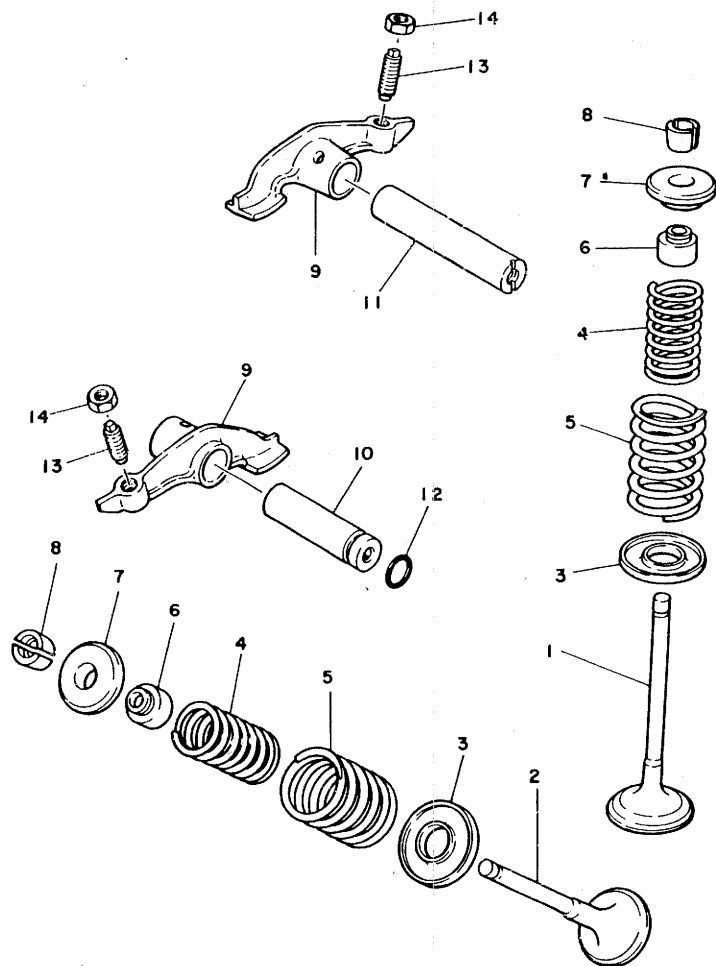
REF. NO.	PART NO.	DESCRIPTION	Q'TY	REMARKS
25	90282-05013	KEY, straight	1	
26	90215-14185	WASHER, lock	1	
27	90170-14284	NUT	1	
28	90280-05013	KEY, woodruff	1	
29	90201-10508	WASHER, Plate	1	
30	92901-10100	WASHER, spring	1	
31	90101-10188	BOLT	1	



15X171-2030

B5

FIG. 4 VALVE

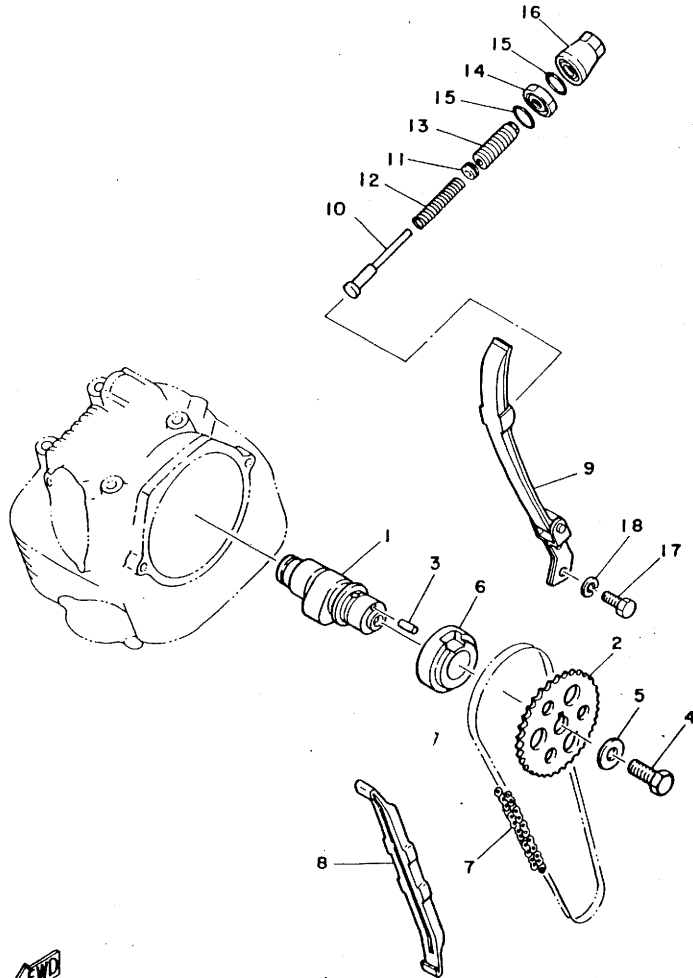


REF. NO.	PART NO.	DESCRIPTION	Q'TY	REMARKS
1	5H0-12111-00	VALVE, intake	1	
2	5H0-12121-00	VALVE, exhaust	1	
3	4G0-12116-01	SEAT, valve spring	2	
4	4G0-12113-00	SPRING, valve inner	2	
5	4G0-12114-00	SPRING, valve outer	2	
6	5H0-12119-00	SEAL, valve stem	2	
7	4G0-12117-00	RETAINER, valve spring	2	
8	4G0-12118-00	COTTER, valve	4	
9	5H0-12151-00	ARM, valve rocker	2	
10	5H0-12156-00	SHAFT, rocker 2	1	
11	5H0-12146-00	SHAFT, rocker	1	
12	93210-09165	O-RING	1	
13	3Y1-12159-00	SCREW, valve adjusting	2	
14	90170-06128	NUT	2	

5H0110-0040

B6

FIG. 5 CAMSHAFT CHAIN



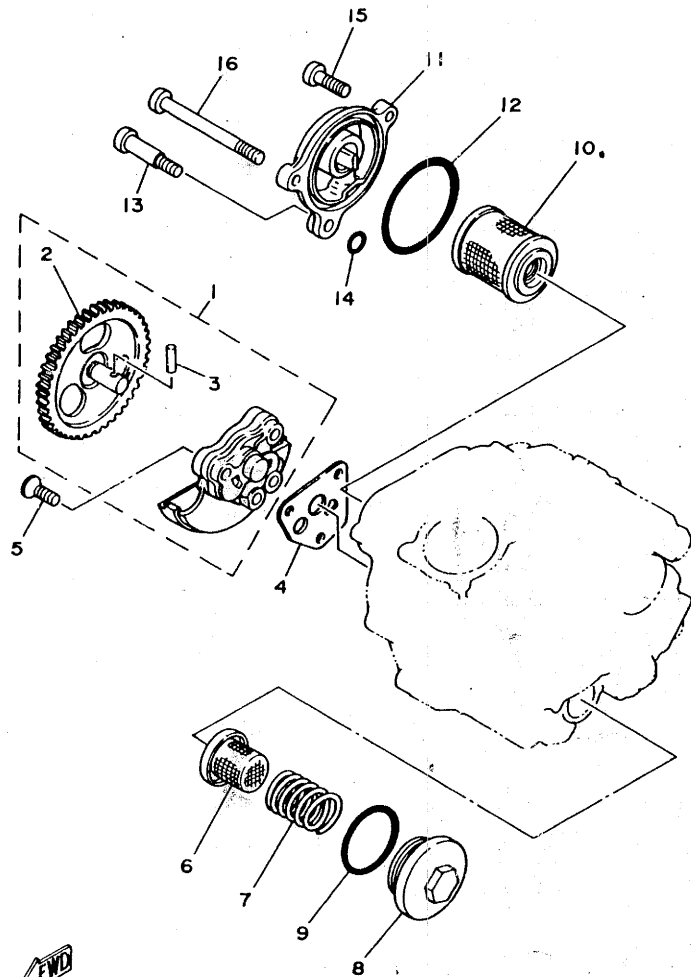
REF. NO.	PART NO.	DESCRIPTION	Q'TY	REMARKS
1	15A-12171-00	CAMSHAFT 1	1	
2	5H0-12176-00	SPROCKET, cam chain (40T)	1	
3	93604-10011	PIN, dowel	1	
4	90101-10303	BOLT	1	
5	90201-10591	WASHER, Plate	1	
6	90387-255F3	COLLAR	1	
7	94580-41104	CHAIN	1	
8	5H0-12231-00	GUIDE, stopPer 1	1	
9	5N0-12241-00	GUIDE, stopPer 2	1	
10	3Y1-12217-00	ROD, chain tensioner	1	
11	3Y1-12232-00	DAMPER	1	
12	90501-10587	SPRING, comPression	1	
13	90149-14146	SCREW	1	
14	90179-14298	NUT	1	
15	93210-16325	O-RING	2	
16	3Y1-12212-00	CASE, chain tensioner	1	
17	97321-06016	BOLT	2	
18	92901-06600	WASHER, Plate	2	



15X171-2050

B7

FIG. 6 OIL PUMP

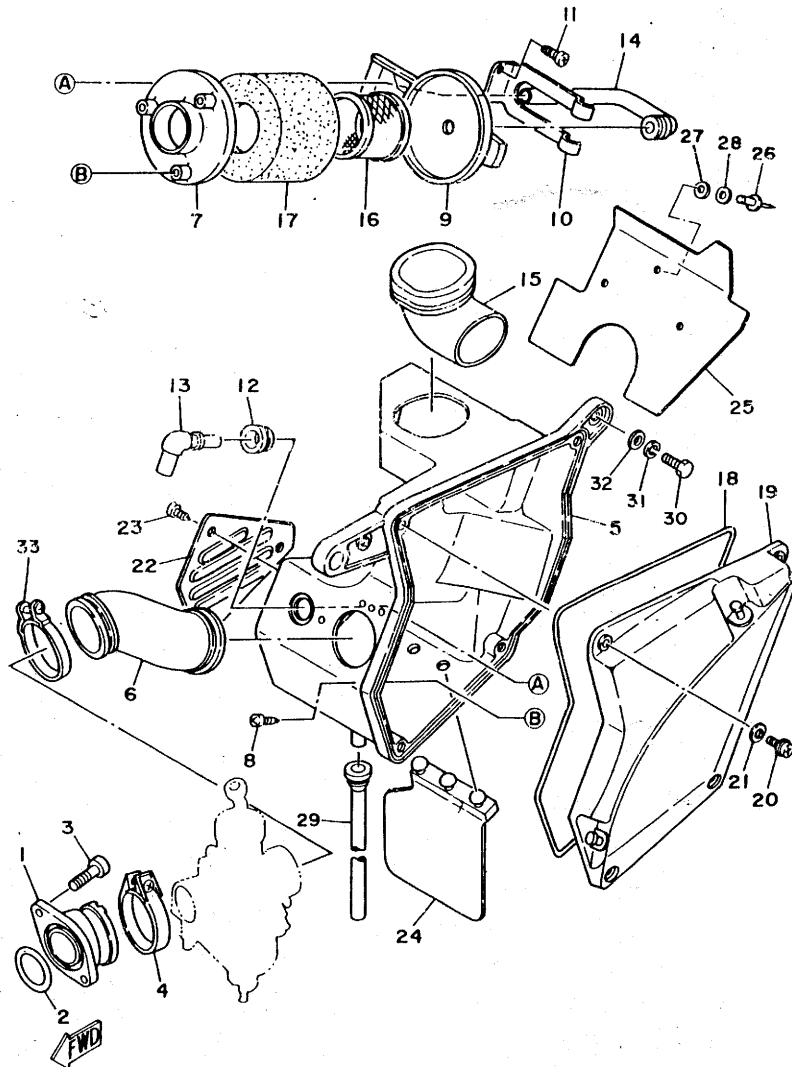


REF. NO.	PART NO.	DESCRIPTION	Q'TY	REMARKS
1	5H0-13300-00	OIL PUMP ASSY	1	
2	5H0-13326-00	GEAR, PumP driven 2 (45T)	1	
3	93603-12030	PIN, dowel	1	
4	5H0-13329-00	GASKET, PumP cover	1	
5	92701-06030	SCREW, flat head	3	
6	3Y1-13411-00	STRAINER, oil	1	
7	90501-18576	SPRING, comPression	1	
8	5H0-15351-00	PLUG, drain	1	
9	93210-35389	O-RING	1	
10	5H0-13440-00	ELEMENT ASSY, oil cleaner	1	
11	15A-13447-00	COVER, oil element	1	
12	93210-54175	O-RING	1	
13	90109-06419	BOLT	1	
14	93210-07135	O-RING	1	
15	92506-06025	SCREW, Pan head	1	
16	92506-06075	SCREW, Pan head	1	


15X171-2060

B8

FIG. 7 INTAKE



15X171-2070

REF. NO.	PART NO.	DESCRIPTION	Q'TY	REMARKS
1	15A-13586-02	JOINT, carburetor 1	1	
2	93210-35537	O-RING	1	
3	91316-06020	BOLT	2	
4	90460-43179	CLAMP, hose	1	
5	15A-14411-00	CASE, air cleaner 1	1	
6	15A-14453-02	JOINT, air cleaner 1	1	
7	15A-14472-00	PLATE, element	1	
8	97702-40510	SCREW, tapping	3	
9	15A-14468-00	PLATE, element fitting	1	
10	15A-14487-00	SPRING	1	
11	97702-40510	SCREW, tapping	2	
12	90480-16278	GROMMET	1	
13	15A-14485-00	PIPE, joint	1	
14	15A-14419-00	PIPE	1	
15	15A-14437-00	DUCT	1	
16	15A-14458-01	GUIDE	1	
17	15A-14451-00	ELEMENT, air cleaner	1	
18	15A-14462-00	SEAL	1	
19	15A-14412-00	CAP, cleaner case 1	1	
20	98506-05016	SCREW, Pan head	4	
21	92906-05600	WASHER, Plate	4	
22	15A-1442F-00	PROTECTOR	1	
23	97702-40510	SCREW, tapping	3	
24	15A-21621-00	FLAP	1	
25	15A-21691-01	FLAP	1	
26	90267-40073	RIVET, blind	3	
27	90201-047A2	WASHER, Plate	3	
28	92902-04200	WASHER, Plain	3	

B9

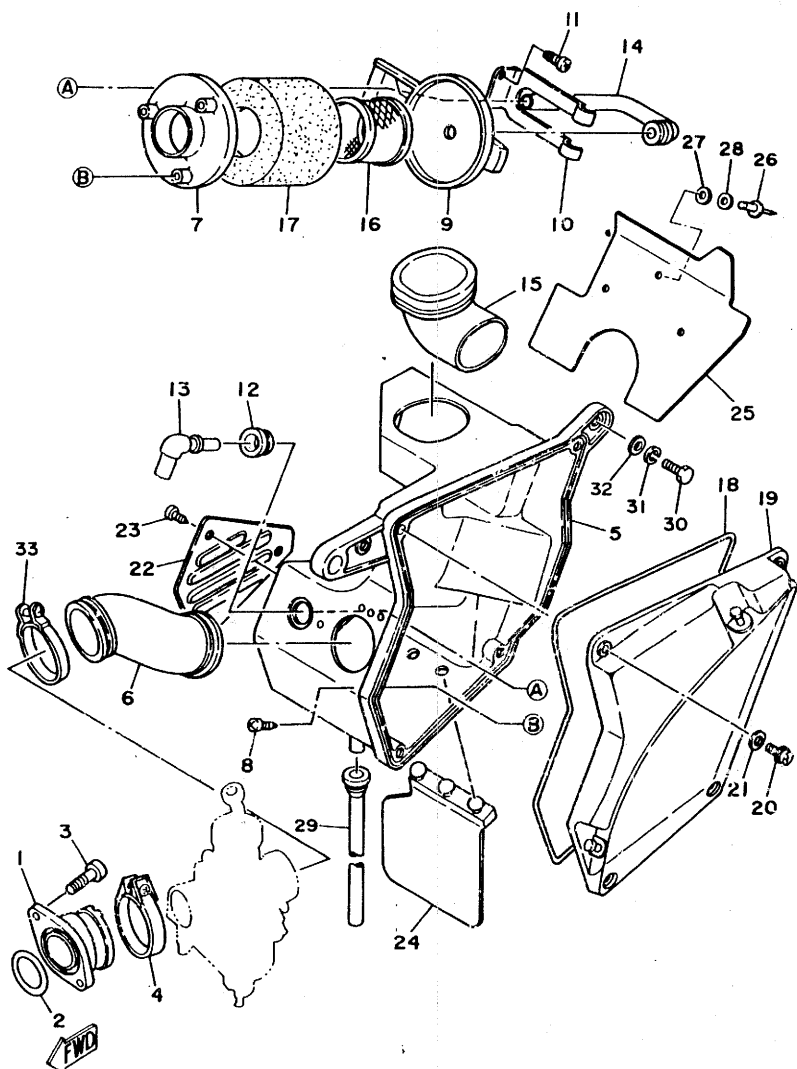


FIG. 7 INTAKE

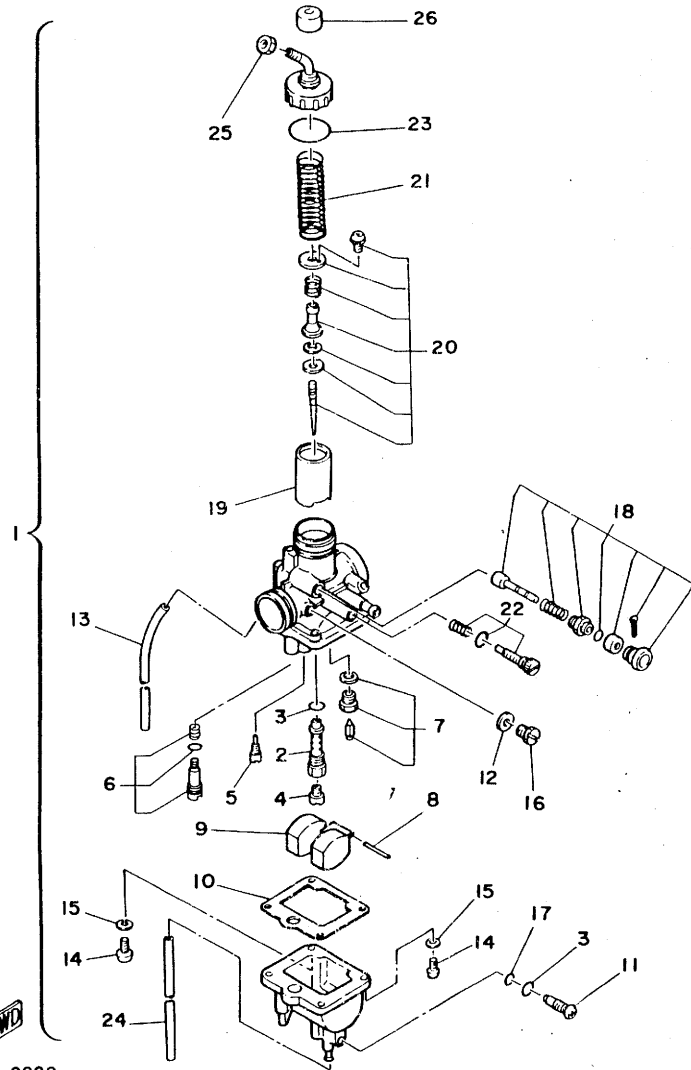
REF. NO.	PART NO.	DESCRIPTION	Q'TY	REMARKS
29	15A-1443E-G0	PIPE, drain	1	
30	97302-06025	BOLT	2	
31	92902-06100	WASHER, spring	2	
32	92902-06600	WASHER	2	
33	90460-45104	CLAMP, hose	1	

15X171-2070

B10

FIG. 8 CARBURETOR

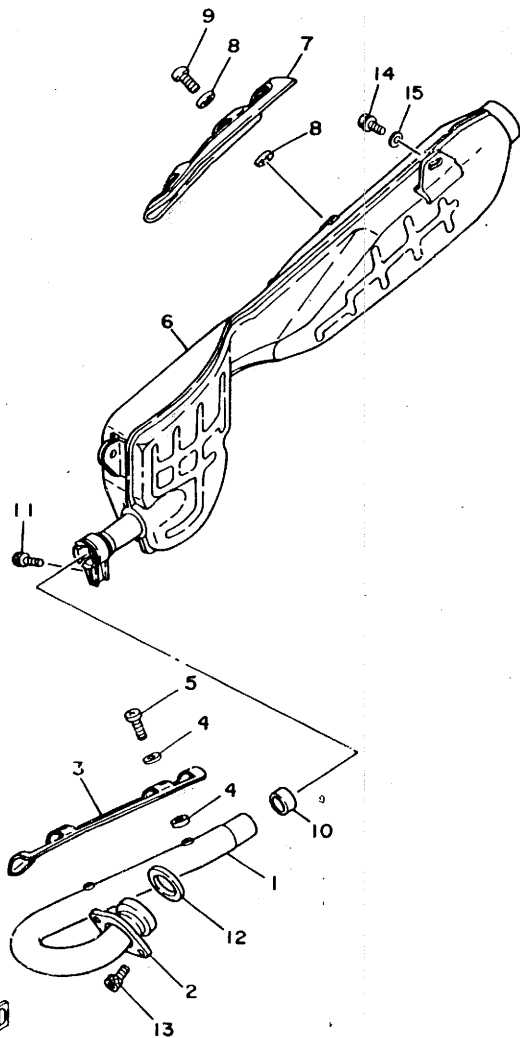
REF. NO.	PART NO.	DESCRIPTION	Q'TY	REMARKS
1	12T-14301-00	CARBURETOR ASSY 1	1	
2	5H0-14341-00	•NOZZLE, main	1	
3	360-24512-00	•GASKET	2	
4	288-14343-61	•JET, main (#125)	1	
5	396-14342-20	•JET, Pilot (#040)	1	
6	5H0-W1494-00	•PILOT SCREW SET	1	
7	12T-W1496-00	•VALVE SEAT SET	1	
8	626-14386-00	•PIN, float	1	
9	367-14385-01	•FLOAT	1	
10	5H0-14384-00	•GASKET, float chamber	1	
11	5H0-14115-00	•PLUG, screw	1	
12	5H0-14126-00	•GASKET	1	
13	5H0-14348-00	•PIPE 1	1	
14	98501-04014	•SCREW, Pan head	4	
15	92901-04100	•WASHER, sPring	4	
16	5H0-14991-00	•SCREW	1	
17	5H0-14397-00	•O-RING	1	
18	15A-14371-00	•PLUNGER, starter	1	
19	5H0-14312-23	•VALVE, throttle 1	1	
20	12T-W1418-00	•NEEDLE SET	1	
21	5H0-14331-00	•SPRING, throttle valve	1	
22	5H0-W1411-00	•THROTTLE SCREW SET	1	
23	1J2-14147-00	•O-RING	1	
24	5H0-14349-00	•PIPE	1	
25	288-14161-00	•NUT, cable adjustin	1	
26	15A-14118-00	•CAP	1	



15X171-2080

B11

FIG. 9 EXHAUST



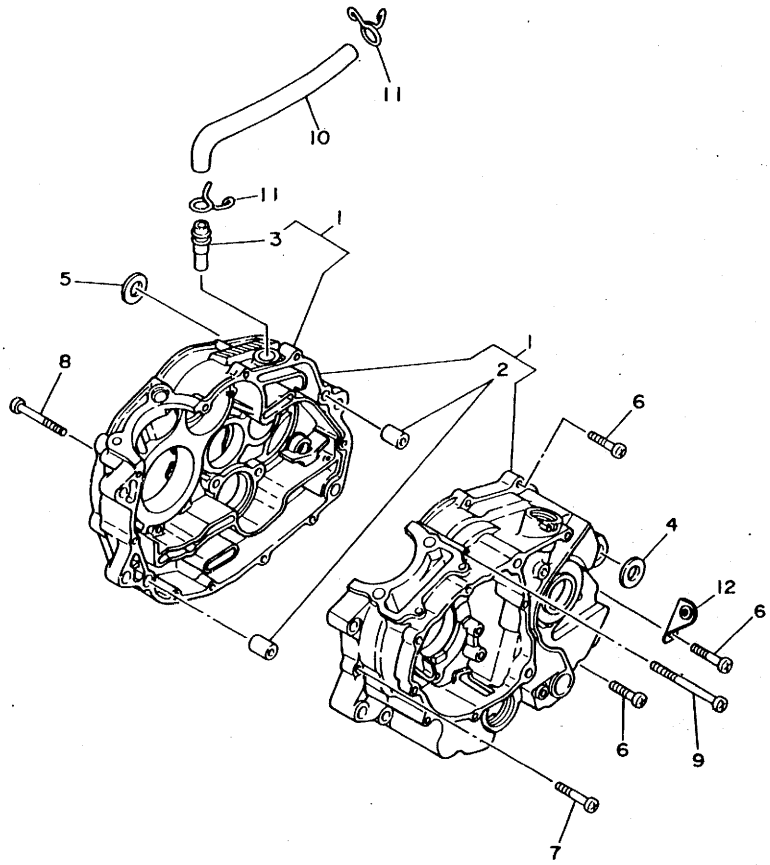
REF. NO.	PART NO.	DESCRIPTION	Q'TY	REMARKS
1	15A-14611-60	PIPE, exhaust 1	1	
2	15A-14612-00	NUT, ring	1	
3	15A-14628-00	PROTECTOR, exhaust Pipe	1	
4	583-14766-00	WASHER, Protector	4	
5	98906-06008	SCREW, bind	2	
6	12V-14711-00	MUFFLER 1	1	
7	15A-14728-00	PROTECTOR, muffler 2	1	
8	583-14766-00	WASHER, Protector	4	
9	98906-06008	SCREW, bind	2	
10	4H7-14714-00	GASKET, muffler	1	
11	91316-08020	BOLT	1	
12	341-14613-00	GASKET, exhaust Pipe	1	
13	91316-06020	BOLT	2	
14	95811-08016	BOLT, flange	2	
15	90201-08326	WASHER, Plate	2	

15Y700-2090

B12

FIG. 10 CRANKCASE

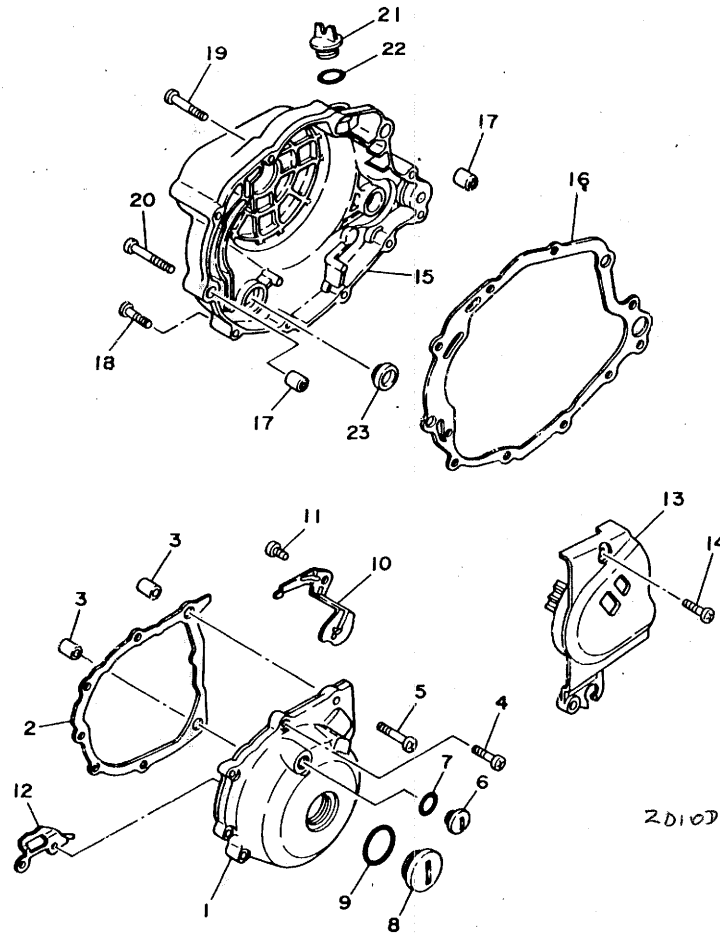
REF. NO.	PART NO.	DESCRIPTION	Q'TY	REMARKS
1	15A-15100-00	CRANKCASE ASSY	1	
2	91830-22016	•PIN, dowel	2	
3	371-11167-01	•PIPE, breather 2	1	
4	90387-125F1	COLLAR	1	
5	90387-125F1	COLLAR	1	
6	92506-06030	SCREW, Pan head	7	
7	92506-06040	SCREW, Pan head	2	
8	92506-06060	SCREW, Pan head	2	
9	92506-06085	SCREW, Pan head	1	
10	15A-11166-00	PIPE, breather 1	1	
11	90467-14015	CLIP	2	
12	90465-08200	CLAMP	1	



15X171-2100

B13

FIG. 11 CRANKCASE COVER



REF. NO.	PART NO.	DESCRIPTION	Q'TY	REMARKS
1	15A-15411-00	COVER, crankcase 1	1	
2	15A-15451-00	GASKET, crankcase cover	1	
3	91830-22016	PIN, dowel	2	
4	92506-06025	SCREW, Pan head	6	
5	92506-06035	SCREW, Pan head	2	
6	90340-14079	PLUG, straight screw	1	
7	93210-14369	O-RING	1	
8	90340-32030	PLUG, straight screw	1	
9	93210-32172	O-RING	1	
10	90465-08188	CLAMP	1	
11	92501-06010	SCREW, Pan head	1	
12	90465-16187	CLAMP	1	
13	15A-15420-00	CRANKCASE COVER ASSY 2	1	
14	92506-06025	SCREW, Pan head	2	
15	15A-15431-00	COVER, crankcase 3	1	
16	15A-15462-00	GASKET, crankcase cover 3	1	
17	91830-22016	PIN, dowel	2	
18	92506-06025	SCREW, Pan head	5	
19	92506-06035	SCREW, Pan head	3	
20	92506-06045	SCREW, Pan head	2	
21	3Y1-15353-00	PLUG, oil	1	
22	93210-19123	O-RING	1	
23	3Y1-15361-00	GAUGE, level	1	

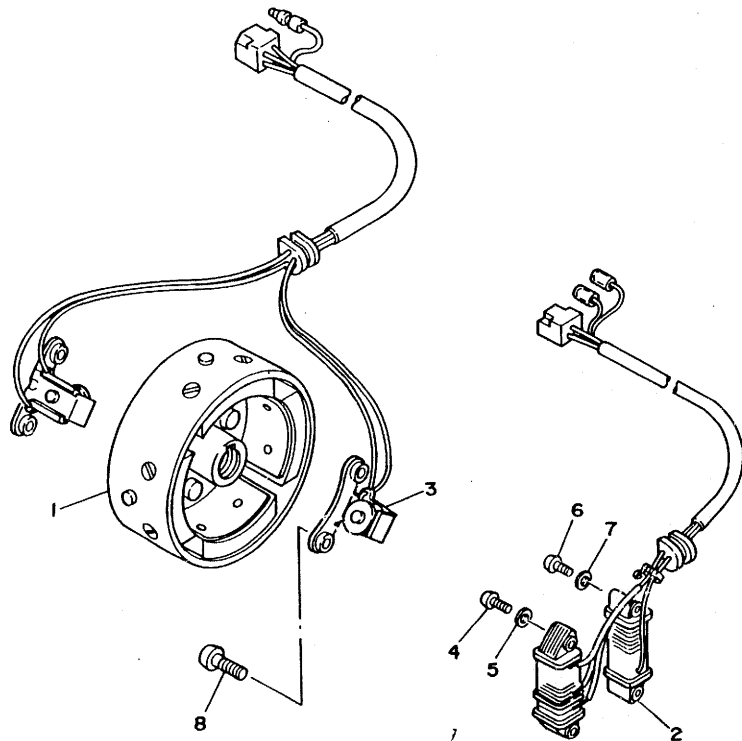


15X171-2110

B14

FIG. 12 A.C.GENERATOR

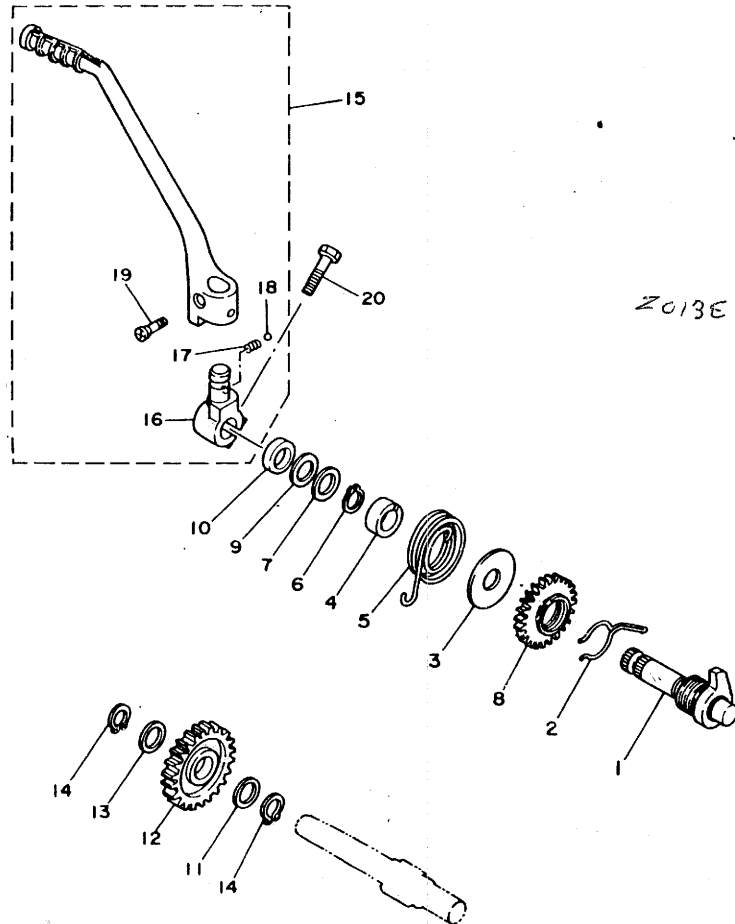
REF. NO.	PART NO.	DESCRIPTION	Q'TY	REMARKS
1	15A-81350-M0	ROTOR ASSY	1	
2	15A-81410-M0	STATOR ASSY	1	
3	15A-85580-M0	COIL, Pulser	1	
4	98502-05040	SCREW, Pan head	2	
5	92902-05100	WASHER, sPring	2	
6	98501-05025	SCREW, Pan head	2	
7	92902-05100	WASHER, sPring	2	
8	92501-06020	SCREW, Pan head	2	




15X171-2120

B15

FIG. 13 KICK STARTER



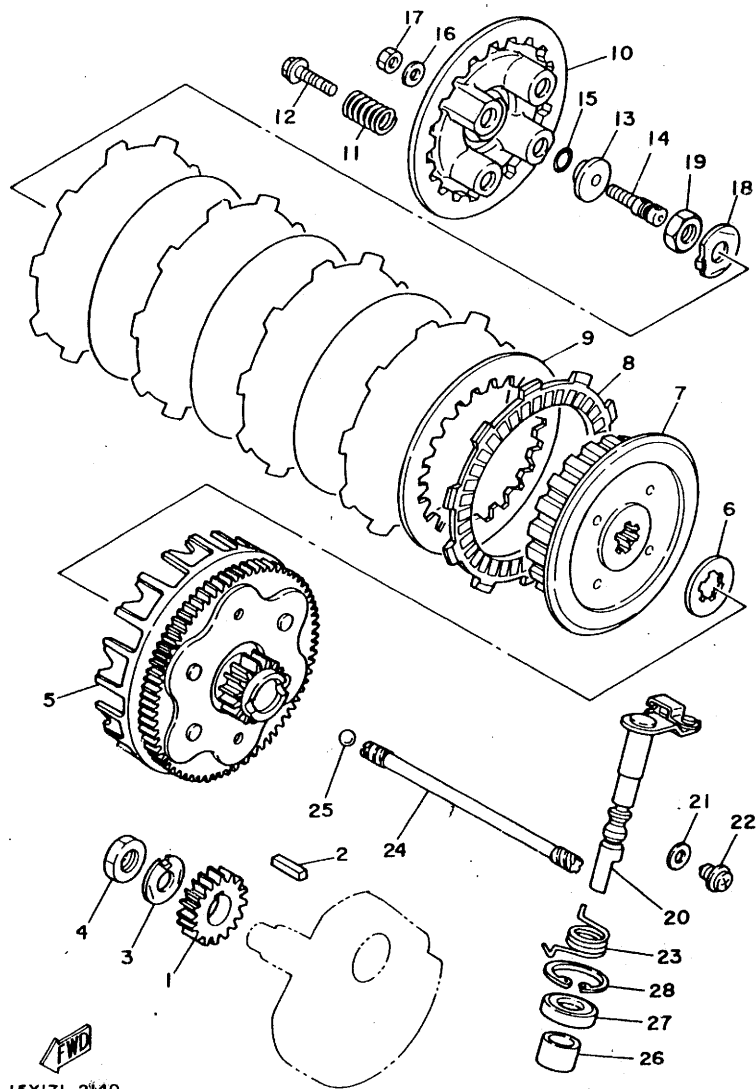
2013E

REF. NO.	PART NO.	DESCRIPTION	Q'TY	REMARKS
1	15A-15660-00	KICK AXLE ASSY	1	
2	90468-2E122	CLIP	1	
3	401-15676-00	COVER, spring	1	
4	15A-15666-00	SPACER	1	
5	90508-26538	SPRING, torsion	1	
6	93440-17073	CIRCLIP	1	
7	90201-175F6	WASHER, Plate	1	
8	15A-15641-01	GEAR, kick (27T)	1	
9	90209-17226	WASHER	1	
10	93102-17253	OIL SEAL	1	
11	90201-173F4	WASHER, Plate	1	
12	15A-15651-01	GEAR, kick idle (28T)	1	
13	90214-17028	WASHER, claw	1	
14	93410-17008	CIRCLIP	2	
15	15A-15620-00	KICK CRANK ASSY	1	
16	15A-15621-02	•BOSS, kick crank	1	
17	90501-12081	•SPRING, compression	1	
18	93507-32009	•BALL	1	
19	90152-06010	•SCREW, countersunk	1	
20	97321-08030	BOLT	1	

15X171-2130

C2

FIG. 14 CLUTCH

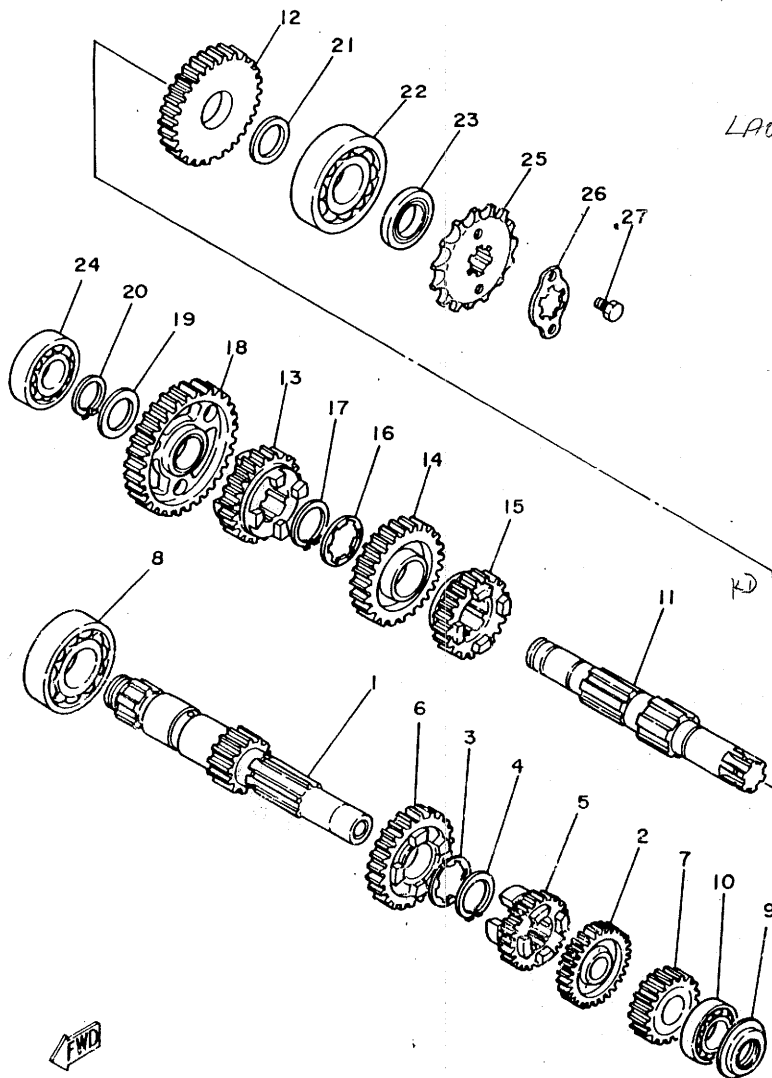


15X171-2140

REF. NO.	PART NO.	DESCRIPTION	Q'TY	REMARKS
1	5H0-16111-00	GEAR, Primary drive (22T)	1	
2	90282-05043	KEY, straight	1	
3	90215-14205	WASHER, lock	1	
4	90170-14284	NUT	1	
5	15A-16150-00	PRIMARY DRIVEN GEAR COMP.73/17	1	
6	5H0-16154-00	PLATE, thrust 1	1	
7	5H0-16371-01	BOSS, clutch	1	
8	537-16321-00	PLATE, friction	5	
9	137-16324-00	PLATE, clutch 1	4	
10	5H0-16351-00	PLATE, Pressure 1	1	
11	90501-23700	SPRING, compression	4	
12	90159-05011	SCREW, with washer	4	
13	1W1-16358-00	PLATE, Push	1	
14	5H0-16356-01	ROD, Push 1	1	
15	93210-48364	O-RING	1	
16	92901-06200	WASHER, Plain	1	
17	95301-06600	NUT	1	
18	90215-14186	WASHER, lock	1	
19	90170-14284	NUT	1	
20	15A-16380-00	PUSH LEVER ASSY	1	
21	90430-08119	GASKET	1	
22	90149-08067	SCREW	1	
23	90508-18537	SPRING, torsion	1	
24	5H0-16357-00	ROD, Push 2	1	
25	93505-16006	BALL	1	
26	90386-14103	BUSH	1	
27	93102-14209	OIL SEAL	1	
28	93420-28055	CIRCLIP	1	

C3

FIG. 15 TRANSMISSION



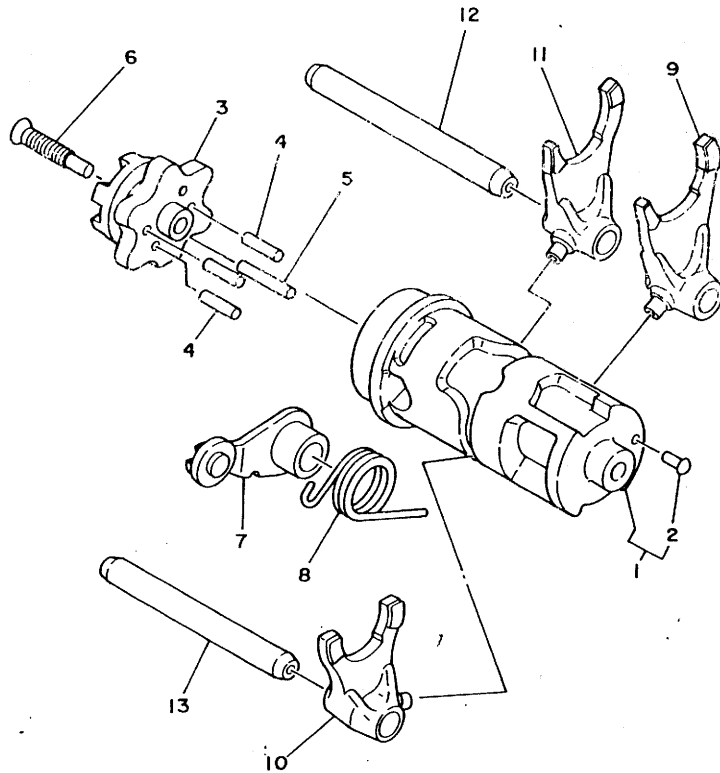
LA09I

REF. NO.	PART NO.	DESCRIPTION	Q'TY	REMARKS
1	15A-17411-01	AXLE, main	1	
2	15A-17151-00	GEAR, 5th Pinion (28T)	1	
3	90209-16209	WASHER	1	
4	93410-20038	CIRCLIP	1	
5	5H0-17121-01	GEAR, 2nd Pinion (22T)	1	
6	15A-17141-00	GEAR, 4th Pinion (25T)	1	AJ33G
7	15A-17121-00	GEAR, 2nd Pinion (19T)	1	
8	93306-20401	BEARING (B6204)	1	
9	93101-15101	OIL SEAL	1	
10	93306-20201	BEARING	1	
11	15A-17402-01	DRIVE AXLE ASSY	1	
12	15A-17221-00	GEAR, 2nd wheel (34T)	1	
13	15A-17241-00	GEAR, 4th wheel (26T)	1	
14	15A-17231-00	GEAR, 3rd wheel (29T)	1	
15	15A-17251-00	GEAR, 5th wheel (23T)	1	
16	90209-18208	WASHER	1	
17	93410-22039	CIRCLIP	1	
18	15A-17211-01	GEAR, 1st wheel (34T)	1	
19	90201-17257	WASHER, Plate	1	
20	93410-17008	CIRCLIP	1	
21	90201-203E7	WASHER, Plate	1	
22	93306-30424	BEARING (B6304A3)	1	
23	93102-20242	OIL SEAL	1	
24	93306-20323	BEARING	1	
25	5H0-17461-50	SPROCKET, drive (15T)	1	
26	5H0-17456-00	HOLDER, sProcket	1	
27	97322-06010	BOLT	2	

FWD
15X171-2150

C4

FIG. 16 SHIFT CAM-FORK



REF. NO.	PART NO.	DESCRIPTION	Q'TY	REMARKS
1	15A-18540-00	SHIFT CAM ASSY	1	
2	136-18542-00	.POINT, neutral	1	
3	5H0-18185-00	SEGMENT	1	
4	93604-16092	PIN, dowel	3	
5	93604-20156	PIN, dowel	1	
6	90151-06013	SCREW, countersunk	1	
7	4G0-18140-00	STOPPER LEVER ASSY	1	
8	90508-26539	SPRING, torsion	1	
9	5N0-18513-00	FORK, shift 3	1	
10	5H0-18511-00	FORK, shift 1	1	
11	5H0-18512-00	FORK, shift 2	1	
12	5H0-18531-00	BAR, shift fork Guide 1	1	
13	3Y1-18535-00	BAR, shift fork Guide 2	1	

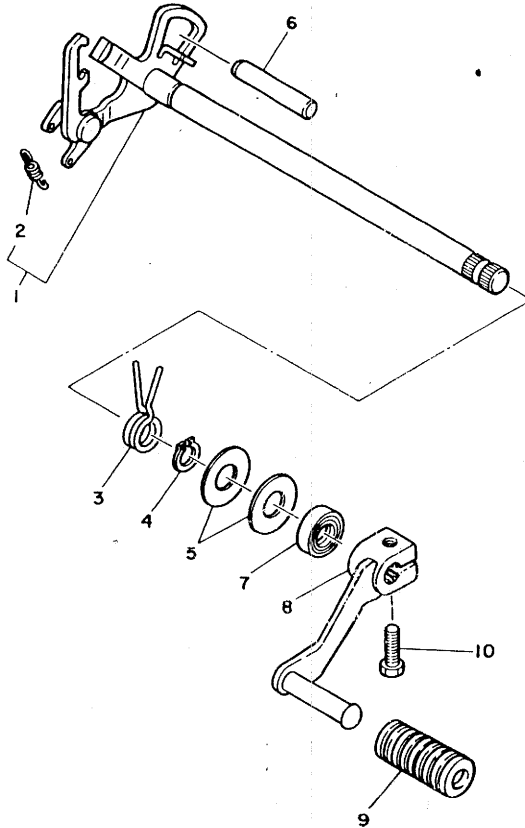


15X171-2160

C5

FIG. 17 SHIFT SHAFT-PEDAL

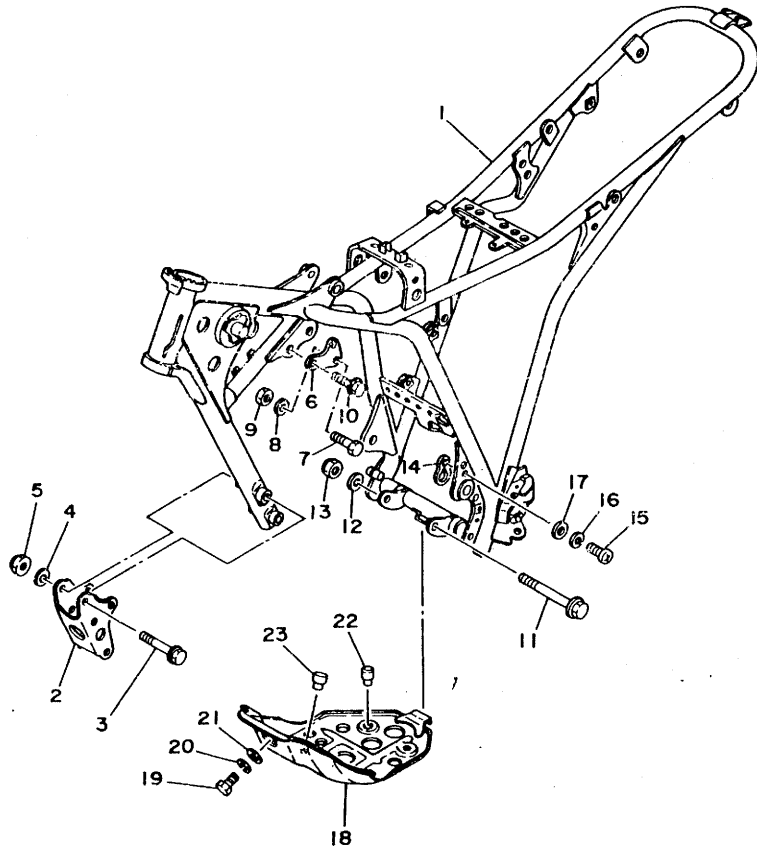
REF. NO.	PART NO.	DESCRIPTION	Q'TY	REMARKS
1	5H0-18120-00	SHIFT LEVER ASSY	1	
2	90506-08227	•SPRING, tension	1	
3	90508-29540	SPRING, torsion	1	
4	93430-10016	CIRCLIP	1	
5	90201-12588	WASHER, Plate	2	
6	93608-50158	PIN, dowel	1	
7	93102-12106	OIL SEAL	1	
8	15A-18111-00	PEDAL, shift	1	
9	132-18113-01	COVER, shift Pedal	1	
10	97321-06020	BOLT	1	



15X171-2170

C6

FIG. 18 FRAME



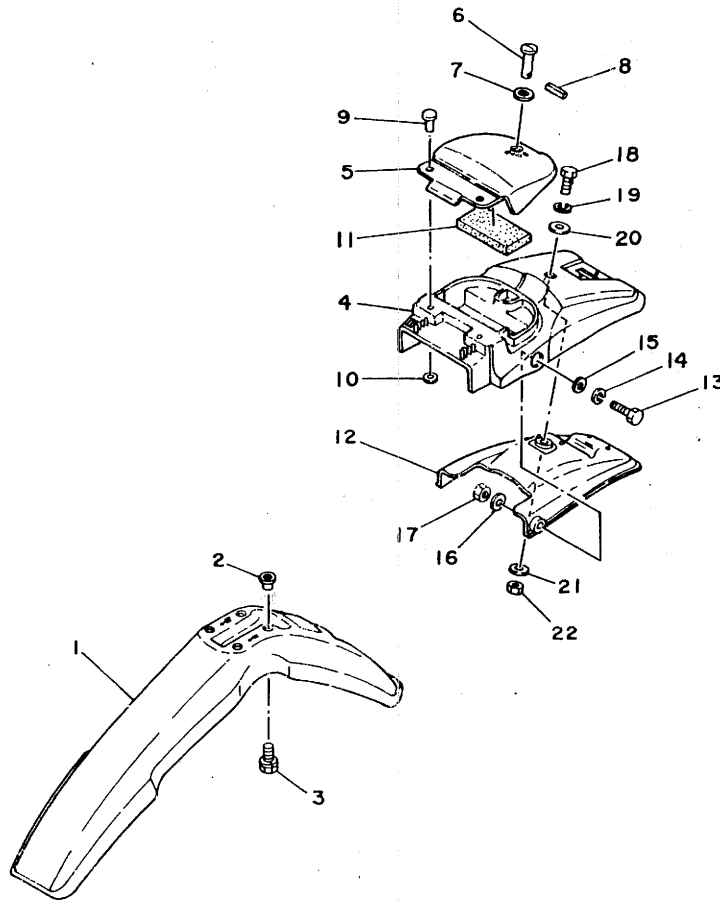
REF. NO.	PART NO.	DESCRIPTION	Q'TY	REMARKS
1	12V-21110-00-98	FRAME COMP	1	low gloss black
2	15A-21316-00	STAY, engine 3	1	
3	95811-08065	BOLT, flange	4	
4	90201-08366	WASHER, Plate	4	
5	90185-08089	NUT, self-locking	4	
6	15A-21315-00	STAY, engine 2	1	
7	95812-08050	BOLT, flange	1	
8	90201-08366	WASHER, Plate	1	
9	90185-08089	NUT, self-locking	1	
10	90105-08066	BOLT, washer based	2	
11	95812-08120	BOLT, flange	1	
12	90201-08366	WASHER, Plate	1	
13	90185-08089	NUT, self-locking	1	
14	15A-21329-00	PLATE	1	
15	92501-06012	SCREW, Pan head	1	
16	92902-06100	WASHER, spring	1	
17	92902-06600	WASHER	1	
18	15A-21471-00-35	PROTECTOR, engine	1	silver
19	97301-06016	BOLT	1	
20	92902-06100	WASHER, spring	1	
21	92902-06600	WASHER	1	
22	128-27114-00	STOPPER, main stand	3	
23	3Y1-24768-00	STOPPER	1	



15X171-2180

C7

FIG. 19 FRONT FENDER•REAR FENDER



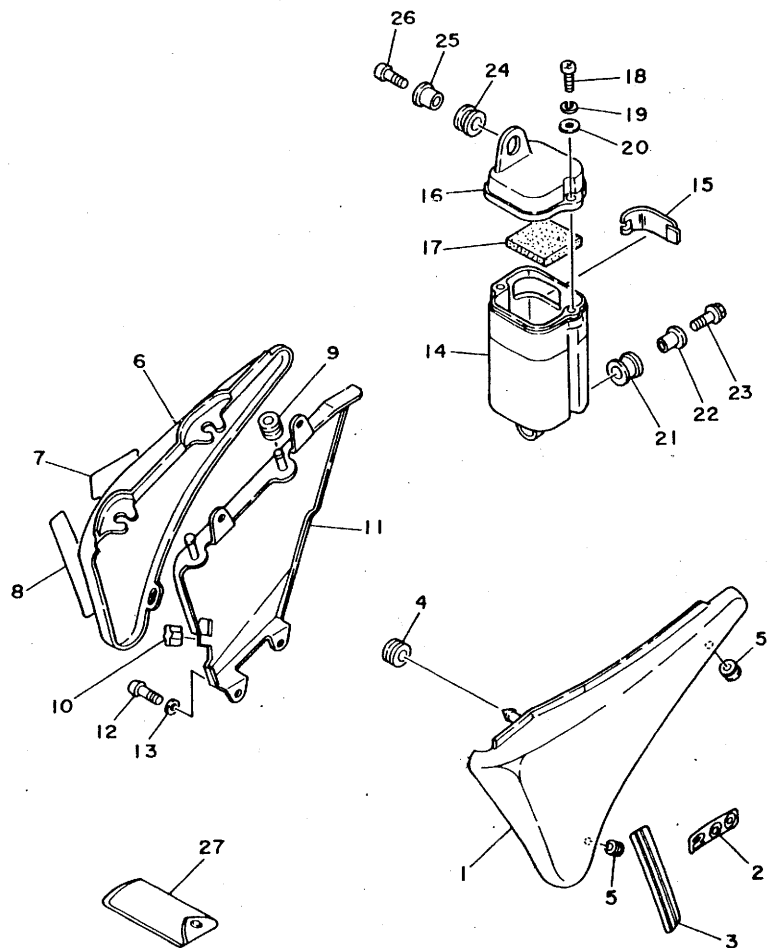
REF. NO.	PART NO.	DESCRIPTION	Q'TY	REMARKS
1	15A-21511-00	FENDER, front	1	clean white
2	90387-07789	COLLAR	4	
3	90119-06063	BOLT, with washer	4	
4	15A-21611-00	FENDER, rear	1	clean white
5	15A-2160E-00	BOX	1	clean white
6	90249-06145	PIN	1	
7	90206-06060	WASHER, wave	1	
8	91609-25018	PIN, sPring	1	
9	90267-40075	RIVET, blind	2	
10	92902-04200	WASHER, Plain	2	
11	15A-21649-00	DAMPER	1	
12	15A-21670-00	REINF. COMP.	1	
13	97301-08025	BOLT	2	
14	92901-08100	WASHER, sPring	2	
15	92901-08600	WASHER, Plate	2	
16	92902-08200	WASHER	2	
17	95302-08600	NUT	2	
18	97301-06020	BOLT	1	
19	92901-06100	WASHER, sPring	1	
20	92901-06600	WASHER, Plate	1	
21	90201-06008	WASHER, Plate	1	
22	95302-06600	NUT	1	



15X171-2190



FIG. 20 SIDE COVER. TOOL

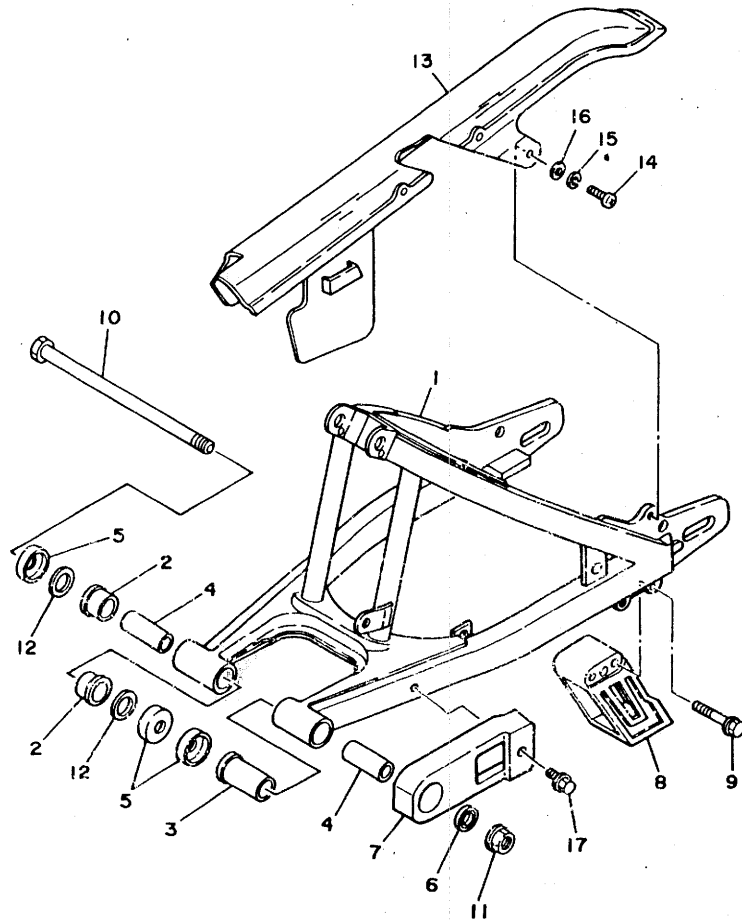


REF. NO.	PART NO.	DESCRIPTION	Q'TY	REMARKS
1	15A-21711-00-E1	COVER, side 1	1	chappy red
2	15A-21781-00	EMBLEM 1	1	for w
3	15A-2173E-00	GRAPHIC 1	1	
4	90480-13197	GROMMET	1	
5	90480-12320	GROMMET	2	
6	15A-21721-00-E1	COVER, side 2	1	chappy red
7	15A-21781-00	EMBLEM 1	1	for w
8	15A-2173F-00	GRAPHIC 2	1	
9	90480-12053	GROMMET	2	
10	15A-21717-00	DAMPER, side cover	1	
11	15A-14718-01	PROTECTOR, muffler 1	1	
12	92506-06012	SCREW, Pan head	4	
13	92906-06600	WASHER, Plate	4	
14	15A-2177A-01	BOX	1	
15	15A-2177J-00	LID 2	1	
16	15A-2177E-00	LID	1	
17	15A-21747-00	DAMPER	1	
18	98501-05020	SCREW, Pan head	2	
19	92902-05100	WASHER, sPring	2	
20	92901-05600	WASHER, Plate	2	
21	15A-21746-00	DAMPER	1	
22	90387-06763	COLLAR	1	
23	95802-06030	BOLT, flange	1	
24	90480-14102	GROMMET	1	
25	90387-06388	COLLAR	1	
26	90153-06037	SCREW, hexagon	1	
27	5H0-28100-10	TOOL KIT	1	

15X171-2200

C9

FIG. 21 REAR ARM



REF. NO.	PART NO.	DESCRIPTION	Q'TY	REMARKS
1	15A-22110-00-35	REAR ARM COMP.	1	silver
2	15A-22123-00	BUSH 1	2	
3	90386-18028	BUSH	1	
4	15A-22126-00	COLLAR, distance	2	
5	401-22128-01	SEAL, Guard	3	
6	93109-18020	OIL SEAL	1	
7	15A-22151-01	SEAL, Guard	1	
8	10V-22153-00	GUARD, chain	1	
9	95801-06050	BOLT, flange	2	
10	4V0-22141-00	SHAFT, Pivot	1	
11	90185-12072	NUT, self-locking	1	
12	401-22127-00	SHIM	1	
13	15A-22310-00	CHAIN CASE ASSY	1	low gloss black
14	92506-06016	SCREW, Pan head	2	
15	92906-06100	WASHER, spring	2	
16	90201-062A8	WASHER, Plate	2	
17	90119-05062	BOLT, with washer	1	

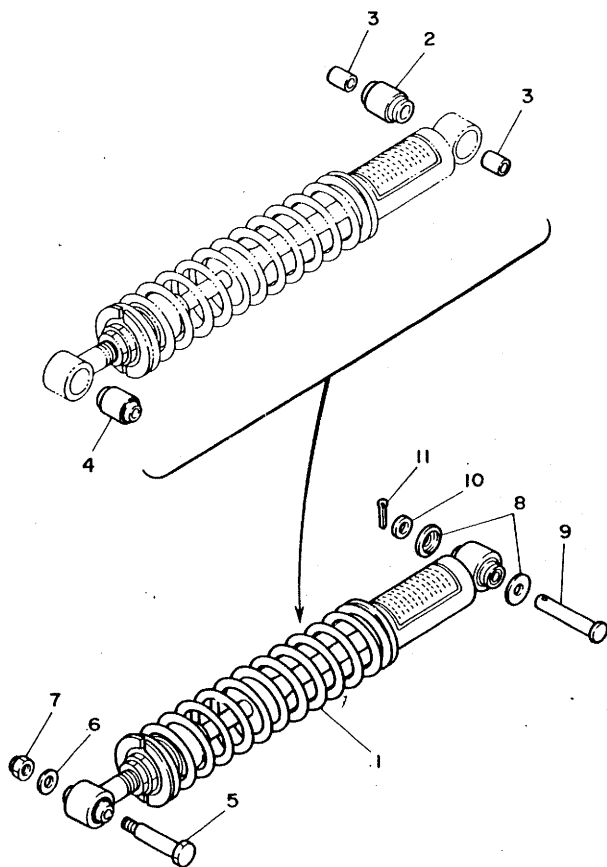


15Y700-2210

C10

FIG. 22 REAR SUSPENSION

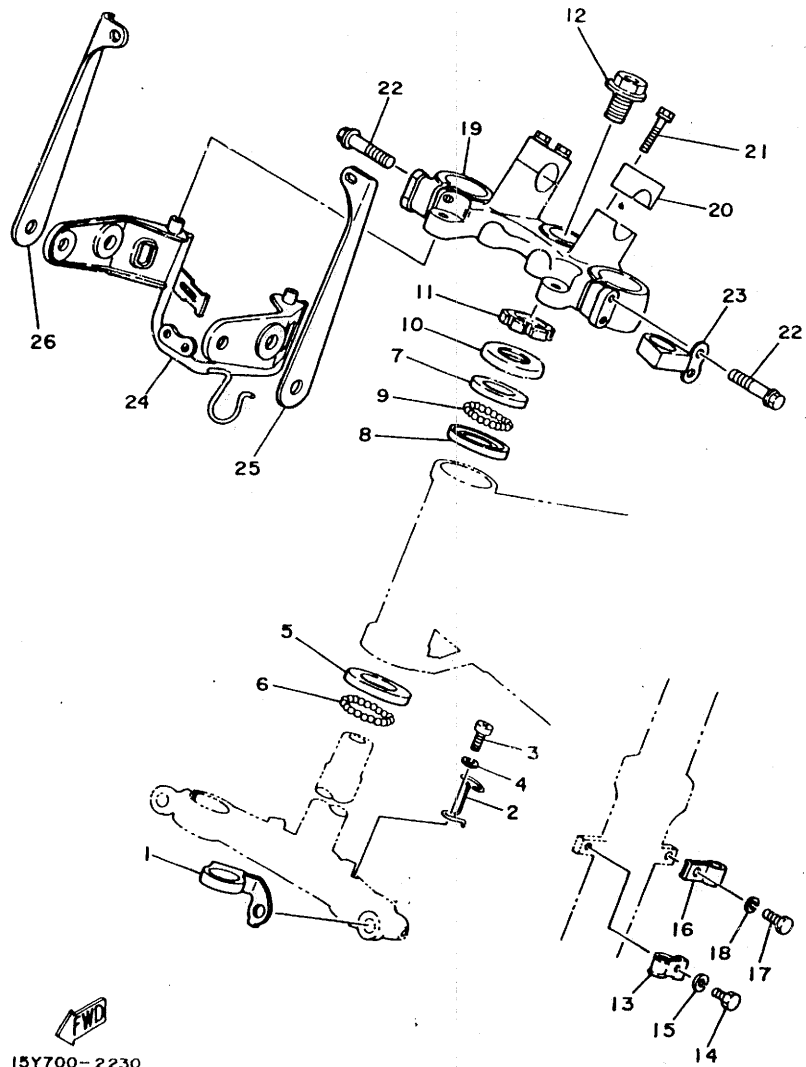
REF. NO.	PART NO.	DESCRIPTION	Q'TY	REMARKS
1	15A-22210-00	SHOCK ABSORBER ASSY, rear	1	
2	3R4-22226-00	•BUSH, shock absorber lower	1	
3	90380-12051	•BUSH, solid	2	
4	1W1-22216-00	•BUSH, rear shock absorber	1	
5	90109-10554	BOLT	1	
6	90201-10126	WASHER, Plate	1	
7	95602-10100	NUT, u	1	
8	1W1-22128-00	COVER, thrust 1	2	
9	90240-12092	PIN, clevis	1	
10	92901-12600	WASHER, Plate	1	
11	91401-30025	PIN, cotter	1	



16E700-1220

C11

FIG. 23 STEERING

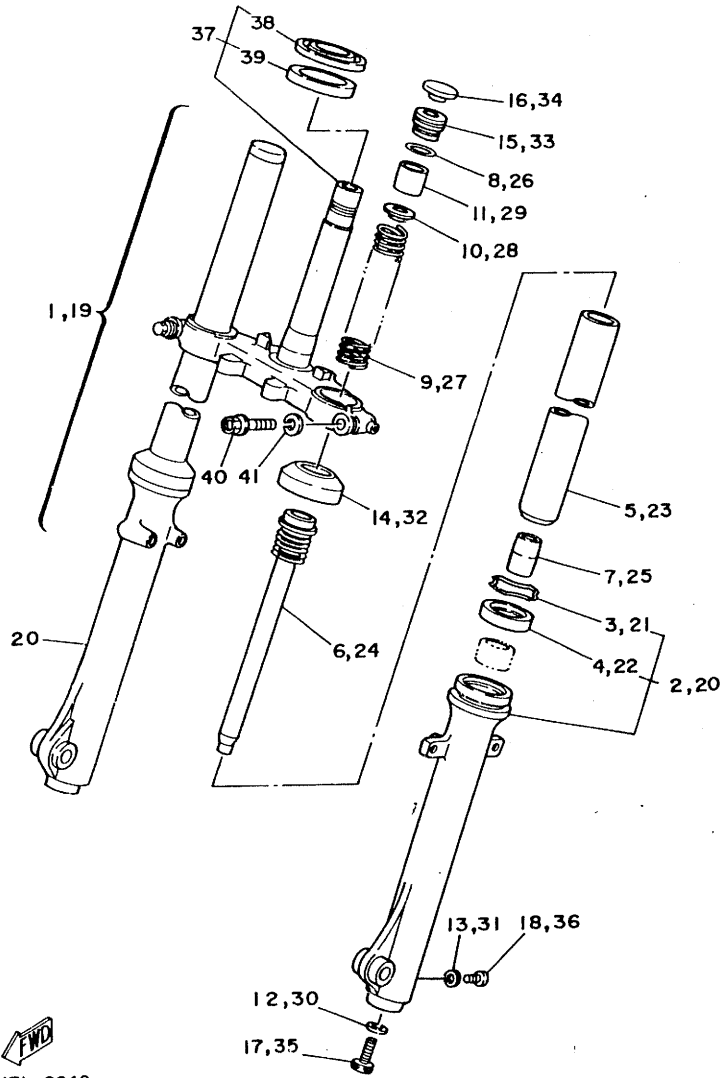


REF. NO.	PART NO.	DESCRIPTION	Q'TY	REMARKS
1	15A-23389-00	GUIDE, cable	1	
2	3Y1-2331E-00	GUIDE, cable	1	
3	92501-06012	SCREW, Pan head	1	
4	92901-06100	WASHER, sPring	1	
5	156-23412-00	RACE, ball 2	1	
6	93501-04011	BALL	19	
7	122-23411-00	RACE, ball 1	1	
8	122-23412-00	RACE, ball,2	1	
9	93503-16010	BALL	22	
10	122-23416-00	COVER, ball race 2	1	
11	90179-25C33	NUT	1	
12	90105-14102	BOLT, washer based	1	
13	3Y1-23319-00	HOLDER, cable 2	1	
14	97306-06012	BOLT	1	
15	92906-06100	WASHER, sPring	1	
16	3Y1-23319-00	HOLDER, cable 2	1	
17	97306-06012	BOLT	1	
18	92906-06100	WASHER, sPring	1	
19	15A-23435-00-98	CROWN, handle	1	low gloss black
20	1E6-23441-00-98	HOLDER, handle upper	2	low gloss black
21	95826-08035	BOLT, flange	4	
22	95826-08040	BOLT, flange	4	
23	5Y1-23317-00	HOLDER, cable	1	
24	15A-23174-00	STAY, headlight	1	
25	15Y-21581-00	STAY, plate fitting 1	1	
26	15Y-21591-00	STAY, plate fitting 2	1	

FWD
15Y700-2230

C12

FIG. 24 FRONT FORK

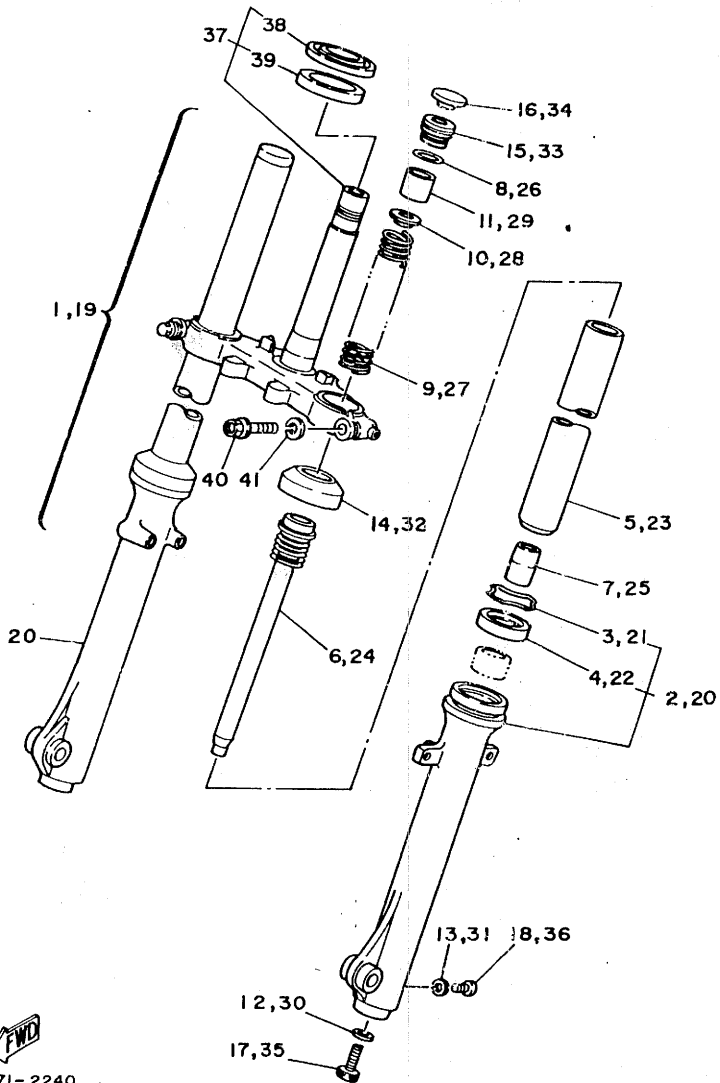


REF. NO.	PART NO.	DESCRIPTION	Q'TY	REMARKS
1	15A-23102-00	FRONT FORK ASSY (L.H)	1	
2	15A-23126-00-38	.TUBE, outer 1	1	clear buffing
3	4A1-23156-00	..CLIP, oil seal	1	
4	1T3-23145-00	..OIL SEAL	1	
5	15A-23110-00	.INNER TUBE COMP.1	1	
6	15A-23170-00	.CYLINDER COMP., front fork	1	
7	5A8-23173-00	.SPINDLE, taPer	1	
8	240-23114-00	.GASKET	1	
9	15A-23141-00	.SPRING, front fork	1	
10	583-23142-00	.SEAT, sPrinG uPPer	1	
11	15A-23118-00	.SPACER	1	
12	509-23158-L0	.GASKET	1	
13	122-23129-00	.GASKET, drain Plug	1	
14	15A-23144-00	.SEAL, dust	1	
15	1U6-23111-M1	.BOLT, caP	1	
16	1U6-23168-M0	.CAP, front fork	1	
17	278-23181-50	.BOLT, hexa&on socket head	1	
18	122-23119-01	.PLUG, drain	1	
19	15A-23103-00	FRONT FORK ASSY (R.H)	1	
20	15A-23136-00-38	.TUBE, outer 2	1	clear buffing
21	4A1-23156-00	..CLIP, oil seal	1	
22	1T3-23145-00	..OIL SEAL	1	
23	15A-23110-00	.INNER TUBE COMP.1	1	
24	15A-23170-00	.CYLINDER COMP., front fork	1	
25	5A8-23173-00	.SPINDLE, taPer	1	
26	240-23114-00	.GASKET	1	
27	15A-23141-00	.SPRING, front fork	1	
28	583-23142-00	.SEAT, sPrinG uPPer	1	

FWD
15X171-2240

C13

FIG. 24 FRONT FORK

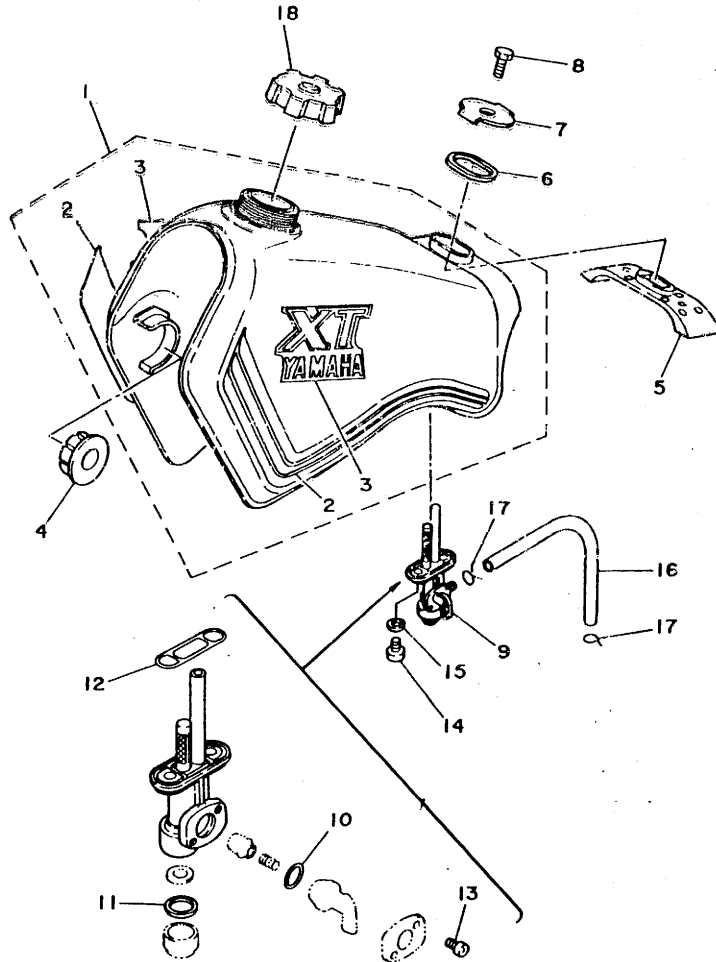


REF. NO.	PART NO.	DESCRIPTION	Q'TY	REMARKS
29	15A-23116-00	•SPACER	1	
30	509-23158-LO	•GASKET	1	
31	122-23129-00	•GASKET, drain Plug	1	
32	15A-23144-00	•SEAL, dust	1	
33	1U6-23111-M1	•BOLT, caP	1	
34	1U6-23168-M0	•CAP, front fork	1	
35	278-23181-50	•BOLT, hexagon socket head	1	
36	122-23119-01	•PLUG, draig	1	
37	12V-23340-20 ^{30 33}	UNDER BRACKET COMP.	1	
38	156-23411-00	•RACE, ball 1	1	
39	164-23462-00	•SEAL, steering	1	
40	15A-23346-00	BOLT 1	1	
41	92906-12100	WASHER, sPring	2	


15X171-2240

C14

FIG. 25 FUEL TANK



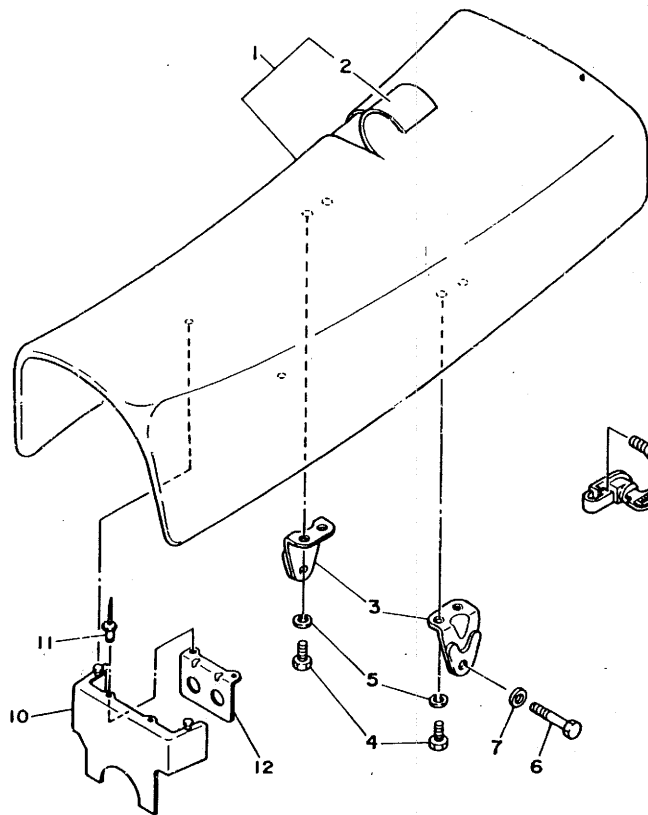
REF. NO.	PART NO.	DESCRIPTION	Q'TY	REMARKS
1	15A-24110-00-01	FUEL TANK COMP.	1	chappy red
2	15A-24240-00	.GRAPHIC SET	1	
3	3Y1-24161-20	.EMBLEM 1	2	
4	4H7-24181-00	DAMPER, locating 1	2	
5	5Y1-24182-01	DAMPER, locating 2	1	
6	11H-24183-00	DAMPER, locating 3	1	
7	11H-24186-00	WASHER, special	1	
8	97302-08025	BOLT	1	
9	15A-24500-01	FUEL COCK ASSY 1	1	
10	4X8-24534-00	.SEAL, cock	1	
11	4X8-24565-00	.GASKET	1	
12	4X8-24512-00	.GASKET	1	
13	4X8-24535-00	.SCREW, lever fitting	2	
14	90149-06011	SCREW	2	
15	90202-06010	WASHER, Plate	2	
16	90445-10638	HOSE	1	
17	90467-09006	CLIP	2	
18	3Y1-24610-01	CAP ASSY	1	



15X171-2250

C15

FIG. 26 SEAT



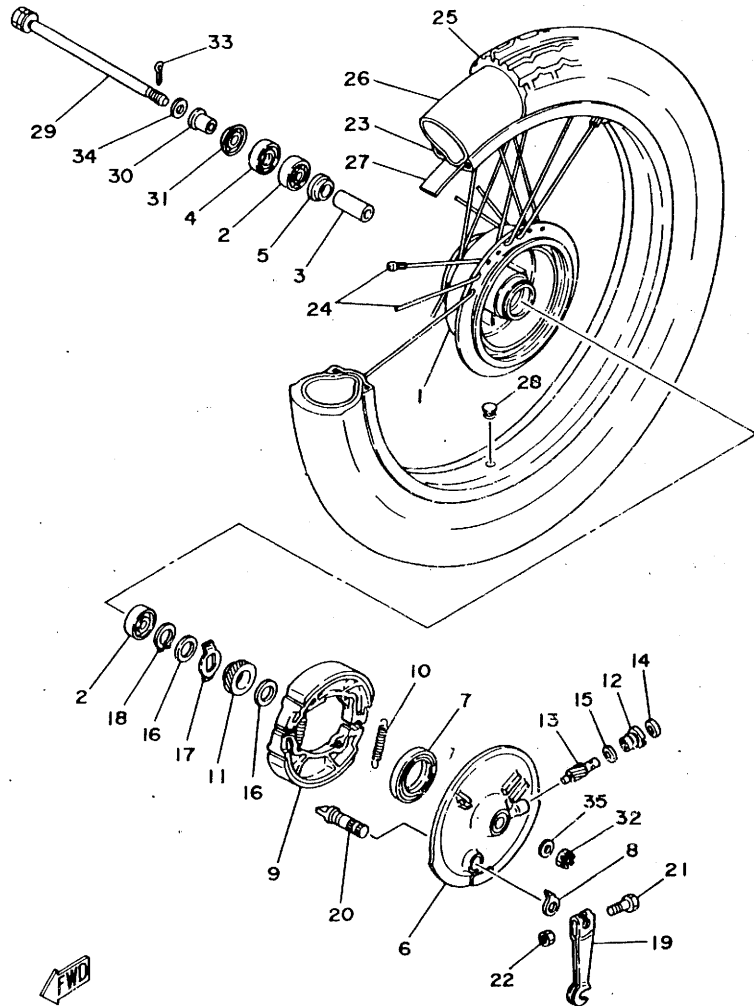
REF. NO.	PART NO.	DESCRIPTION	Q'TY	REMARKS
1	15A-W2473-00	SEMI-DOUBLE SEAT ASSY	1	
2	15A-24731-00	COVER, double seat	1	
3	15A-24738-00	BRACKET, seat	2	
4	97301-06016	BOLT	4	
5	92902-06100	WASHER, sPrinG	4	
6	97306-06020	BOLT	2	
7	92906-06100	WASHER, sPrinG	2	
8	5H0-21308-00	HELMET HANGER ASSY	1	
9	92701-06015	SCREW, flat head	1	
10	15A-21622-00	BAND, flaP	1	
11	90267-32071	RIVET, blind	2	
12	15A-21642-00	GUARD, flaP	1	



15X171-2260

D2

FIG. 27 FRONT WHEEL

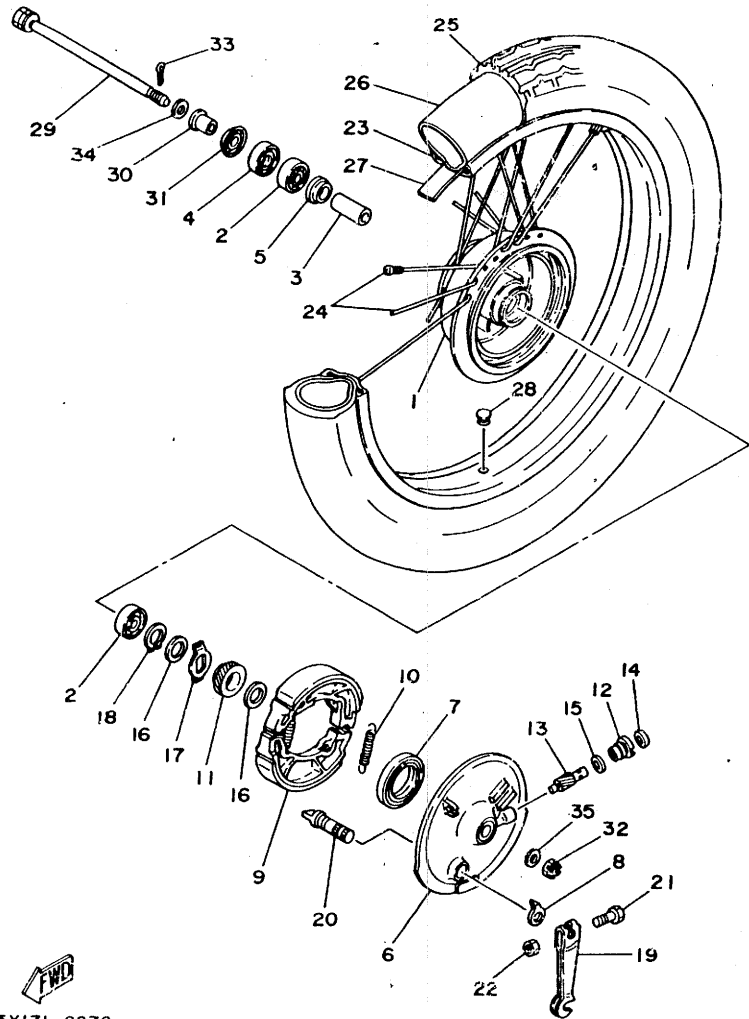


REF. NO.	PART NO.	DESCRIPTION	Q'TY	REMARKS
1	15A-25111-00-98	HUB, front	1	low gloss black
2	93306-30102	BEARING (B6301)	2	
3	15A-25117-00	SPACER, bearing	1	
4	93102-18008	OIL SEAL	1	
5	109-25315-00	FLANGE, spacer	1	
6	4F2-25121-00-98	PLATE, brake shoe	1	low gloss black
7	93105-47007	OIL SEAL	1	
8	3Y6-2533A-01	PLATE, indicator	1	
9	3Y1-25330-00	BRAKE SHOE COMP.	2	
10	90506-16036	SPRING, tension	2	
11	248-25135-11	GEAR, drive	1	
12	109-25136-00	BUSH	1	
13	248-25138-11	GEAR, meter	1	
14	93104-07003	OIL SEAL	1	
15	90201-07076	WASHER, plate	1	
16	90201-20269	WASHER, plate	2	
17	183-25149-00	CLUTCH, meter	1	
18	93410-20009	CIRCLIP	1	
19	5H0-25155-00	LEVER, camshaft 1	1	
20	248-25351-10	CAMSHAFT	1	
21	90101-06278	BOLT	1	
22	95301-06600	NUT	1	
23	94416-21310	RIM (1.60-21)	1	
24	15A-25104-00	SPOKE SET, front	1	
25	94127-21790	TIRE (2.75-21)	1	bridgestone
26	94227-21123	TUBE (2.75-21)	1	bridgestone

FWD
15X171-2270

D3

FIG. 27 FRONT WHEEL

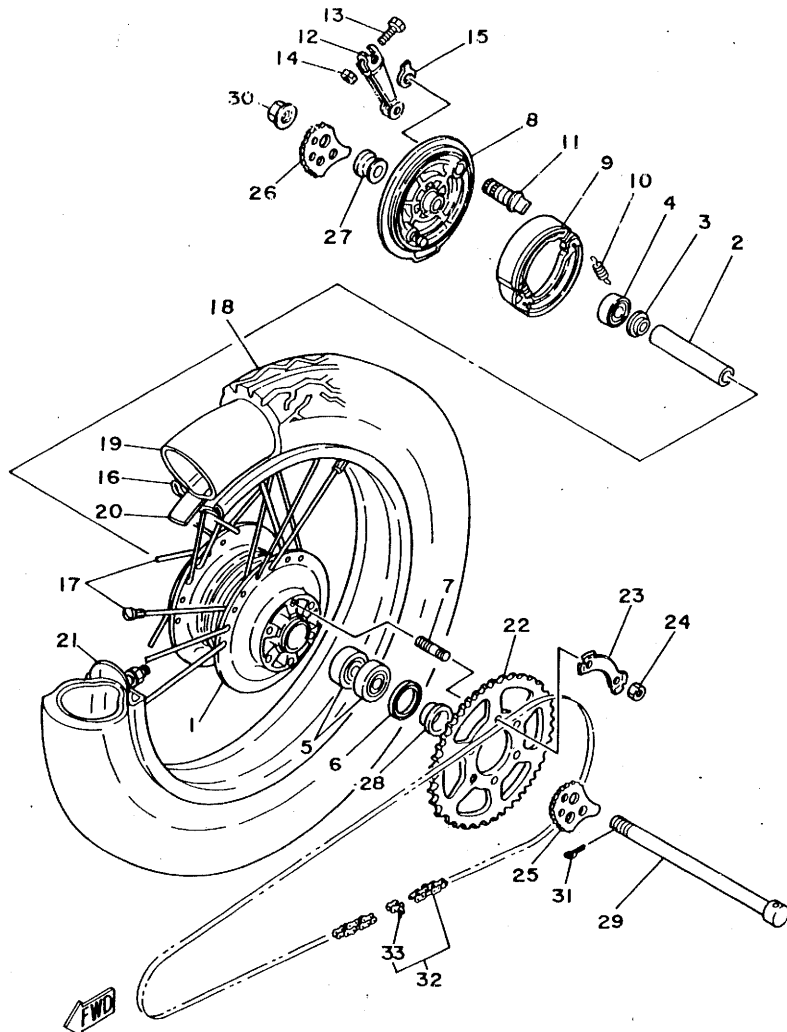


REF. NO.	PART NO.	DESCRIPTION	Q'TY	REMARKS
27	94330-21034	BAND, rim (3.00-21)	1	bridgestone
28	90338-09130	PLUG	1	
29	353-25381-00	AXLE, wheel	1	
30	90387-126F8	COLLAR	1	
31	2K5-25118-00	COVER, hub dust	1	
32	90171-10004	NUT, castle	1	
33	91401-20020	PIN, cotter	1	
34	90201-12729	WASHER, Plate	1	
35	92901-10200	WASHER, Plain	1	


15X171-2270

D4

FIG. 28 REAR WHEEL

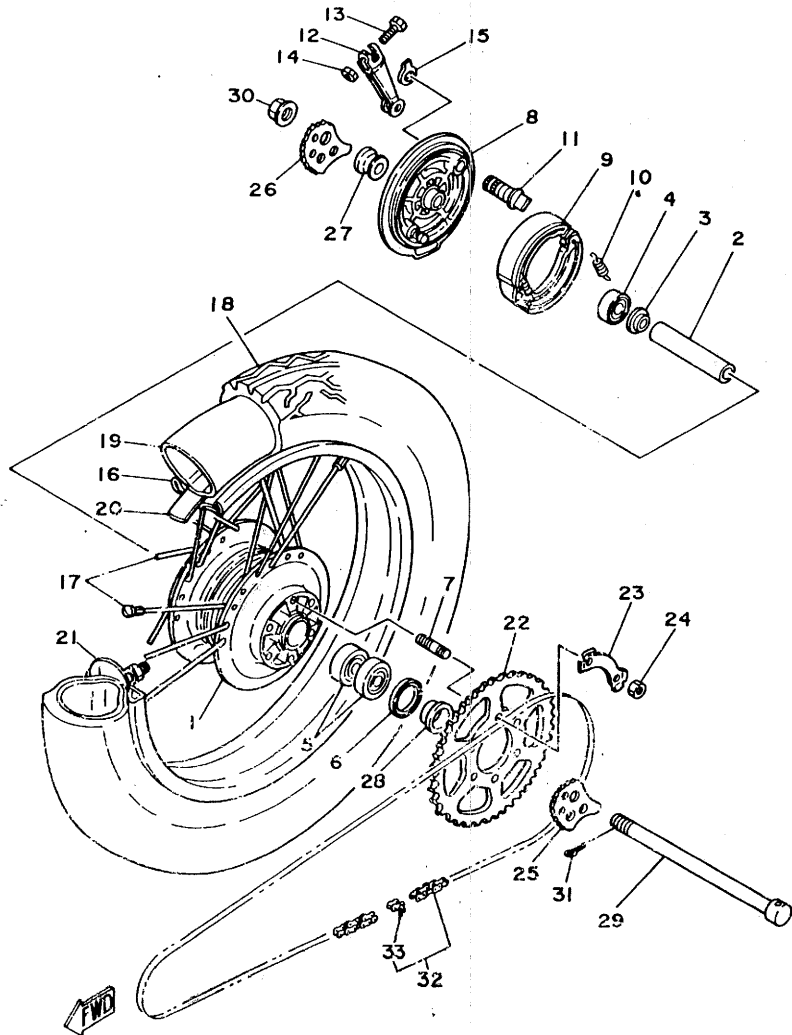


15X171-2280

REF. NO.	PART NO.	DESCRIPTION	Q'TY	REMARKS
1	15A-25311-00-98	HUB, rear	1	low gloss black
2	248-25317-00	SPACER, bearing	1	
3	183-25315-00	FLANGE, spacer	1	
4	93306-20203	BEARING (B6202RS)	1	
5	93306-20205	BEARING (B6202)	2	
6	93104-22018	OIL SEAL	1	
7	90116-08218	BOLT, stud	6	
8	15A-25321-00-98	PLATE, brake shoe	1	low gloss black
9	5H0-25330-00	BRAKE SHOE COMP.	2	
10	90506-15260	SPRING, tension	2	
11	3Y6-25351-00	CAMSHAFT	1	
12	2N3-25155-00	LEVER, camshaft 1	1	
13	90101-06278	BOLT	1	
14	95301-06600	NUT	1	
15	4H7-2533A-02	PLATE, indicator	1	
16	94418-18322	RIM (1.85-18)	1	
17	12V-25304-00	SPOKE SET, rear	1	
18	94141-18792	TIRE (4.10-18)	1	bridgestone
19	94241-18153	TUBE (4.10-18)	1	bridgestone
20	94330-18087	BAND, rim (3.00-18)	1	bridgestone
21	3Y1-25394-00	SPACER, bead	1	
22	15A-25448-10-33	SPROCKET, driven (48T)	1	
23	90215-08160	WASHER, lock	3	
24	90170-08258	NUT	6	
25	5H0-25388-00	PULLER, chain 1	1	
26	5H0-25389-00	PULLER, chain 2	1	
27	90387-15770	COLLAR	1	

D5

FIG. 28 REAR WHEEL

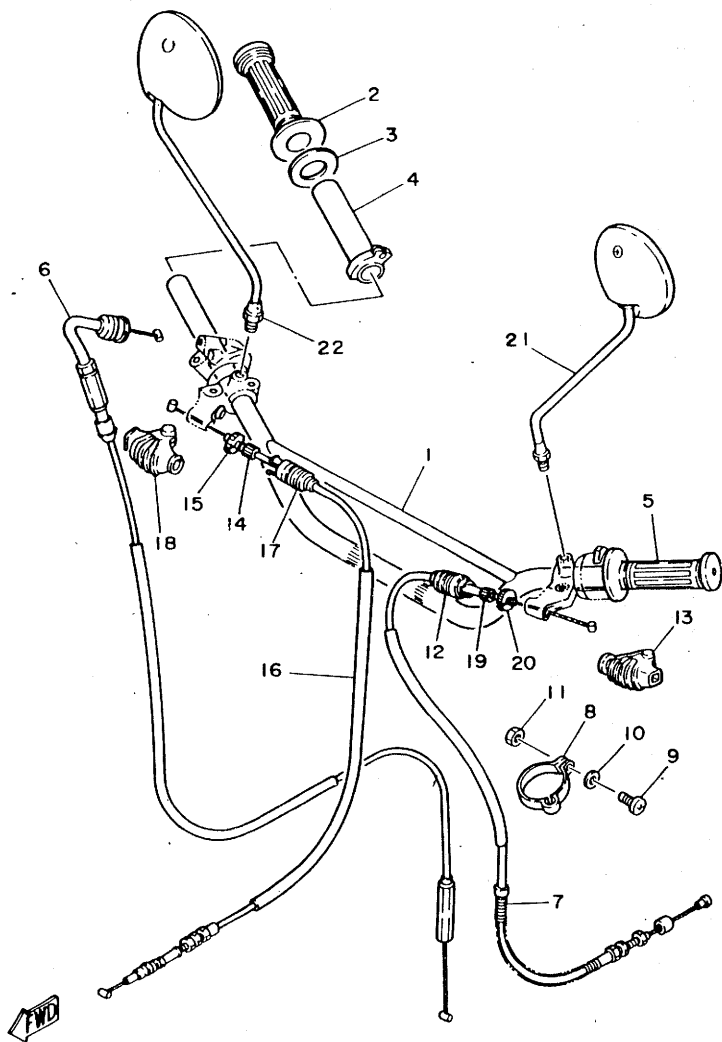


REF. NO.	PART NO.	DESCRIPTION	Q'TY	REMARKS
28	90387-155F2	COLLAR	1	
29	2R7-25381-00	AXLE, wheel	1	
30	90171-14031	NUT, castle	1	
31	91401-30030	PIN, cotter	1	
32	94580-30113	CHAIN	1	
33	94680-30001	JOINT, chain	1	

15X171-226G

D6

FIG. 29 HANDLEBAR.CABLE

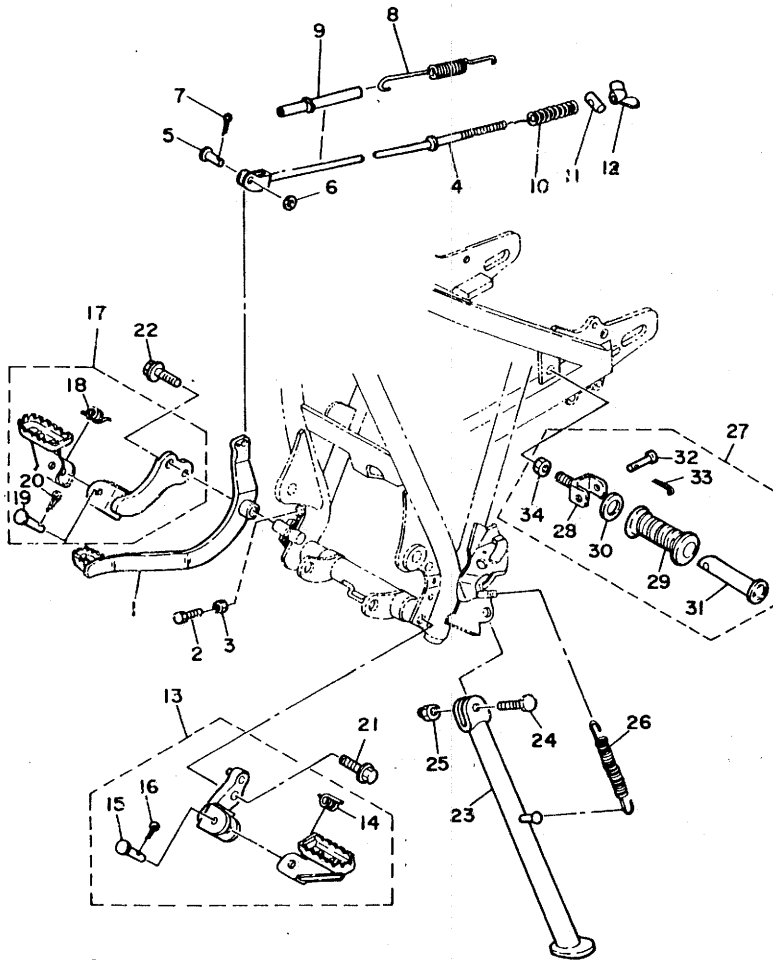


REF. NO.	PART NO.	DESCRIPTION	Q'TY	REMARKS
1	3G7-26111-00	HANDLEBAR	1	
2	1A0-26242-01	GRIP (R.H)	1	
3	1M1-26249-01	RING, leaf	1	
4	434-26243-00	TUBE, throttle Guide	1	
5	1E6-26241-00	GRIP (L.H)	1	
6	15A-26311-00	CABLE, throttle 1	1	
7	15A-26335-00	CABLE, clutch	1	
8	3Y1-26397-00	BAND	1	
9	98501-05016	SCREW, Pan head	1	
10	92901-05600	WASHER, Plate	1	
11	95301-05600	NUT	1	
12	1E6-26342-00	BOOT, cable	1	
13	1E6-26372-00	COVER, handle lever 1	1	
14	90123-08046	BOLT	1	
15	90179-08148	NUT	1	
16	15A-26341-00	CABLE, brake	1	
17	1E6-26342-00	BOOT, cable	1	
18	1E6-26372-00	COVER, handle lever 1	1	
19	90123-08046	BOLT	1	
20	90179-08148	NUT	1	
21	1Y1-26290-30	BACK MIRROR ASSY (L.H)	1	UR for oceania
	1Y1-26290-50	BACK MIRROR ASSY (L.H)	1	UR
22	1Y1-26290-40	BACK MIRROR ASSY (R.H)	1	UR for oceania
	1Y1-26290-60	BACK MIRROR ASSY (R.H)	1	UR

15Y700-2290

D7

FIG. 30 STAND, FOOTREST

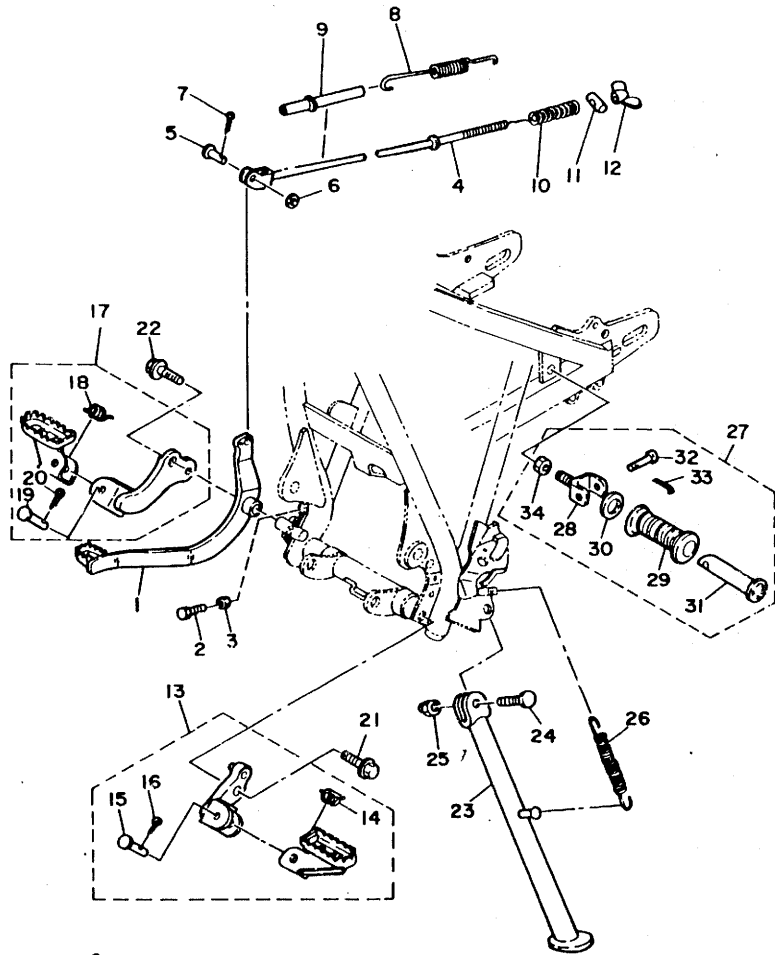


REF. NO.	PART NO.	DESCRIPTION	Q'TY	REMARKS
1	15A-27211-00-98	PEDAL, brake	1	low gloss black
2	97301-06020	BOLT	1	
3	95301-06700	NUT	1	
4	15A-27231-00	ROD, brake	1	
5	90240-06040	PIN, clevis	1	
6	92901-06200	WASHER, plain	1	
7	91401-20015	PIN, cotter	1	
8	90506-18289	SPRING, tension	1	
9	1M1-27244-00	COVER	1	
10	90501-10245	SPRING, compression	1	
11	90249-12008	PIN	1	
12	90175-06013	NUT, wing	1	
13	15A-27410-00-R4	FRONT FOOTREST ASSY (L.H)	1	black
14	90508-20023	SPRING, torsion	1	
15	91701-08038	PIN, clevis	1	
16	91401-25015	PIN, cotter	1	
17	15A-27420-00-R4	FRONT FOOTREST ASSY (R.H)	1	black
18	90508-20023	SPRING, torsion	1	
19	91701-08038	PIN, clevis	1	
20	91401-25015	PIN, cotter	1	
21	95821-12025	BOLT, flange	1	
22	90105-10058	BOLT, washer based	2	
23	12V-27311-00-33	STAND, side	1	yamaha black
24	90109-10635	BOLT	1	
25	90185-10037	NUT, self-locking	1	
26	90507-29009	SPRING, tension	1	
27	120-27430-02	REAR FOOTREST ASSY 1	2	
28	120-27432-02	BRACKET 1	1	

15Y700-2300

D8

FIG. 30 STAND-FOOTREST

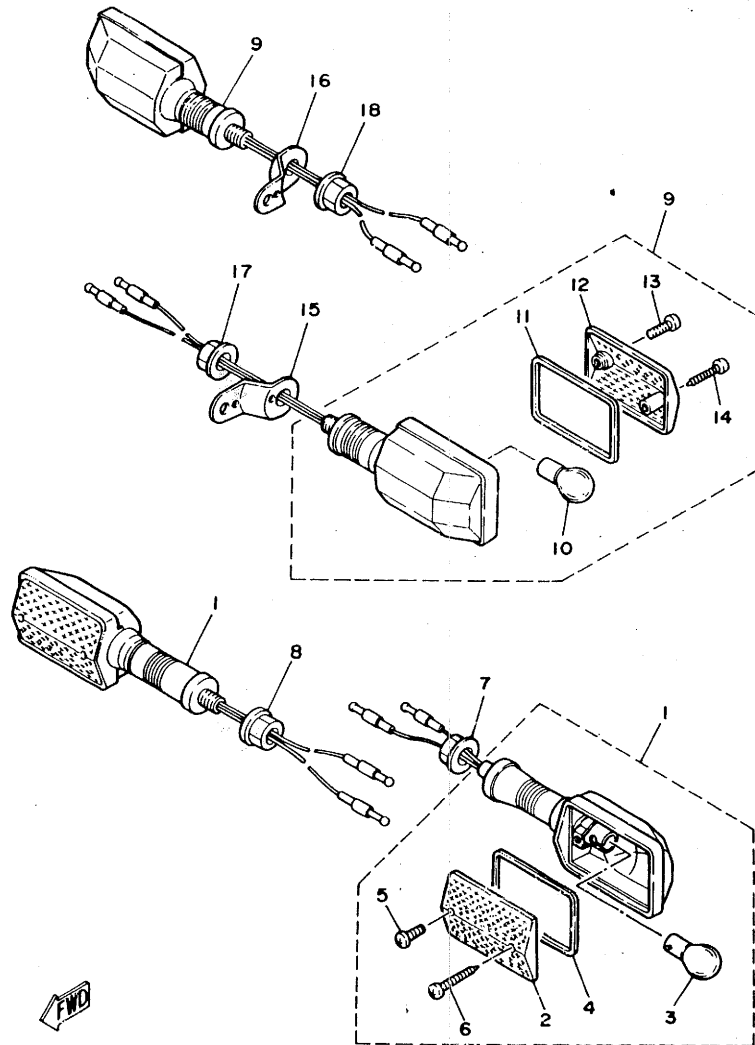


REF. NO.	PART NO.	DESCRIPTION	Q'TY	REMARKS
29	120-27433-00	•COVER, rear footrest	1	
30	90201-20279	•WASHER, Plate	1	
31	120-27431-00	•FOOTREST, rear 1	1	
32	90240-06009	•PIN, clevis	1	
33	91401-16015	•PIN, cotter	1	
34	95301-12700	•NUT	2	


15Y700-2300

D9

FIG. 31 FLASHER LIGHT



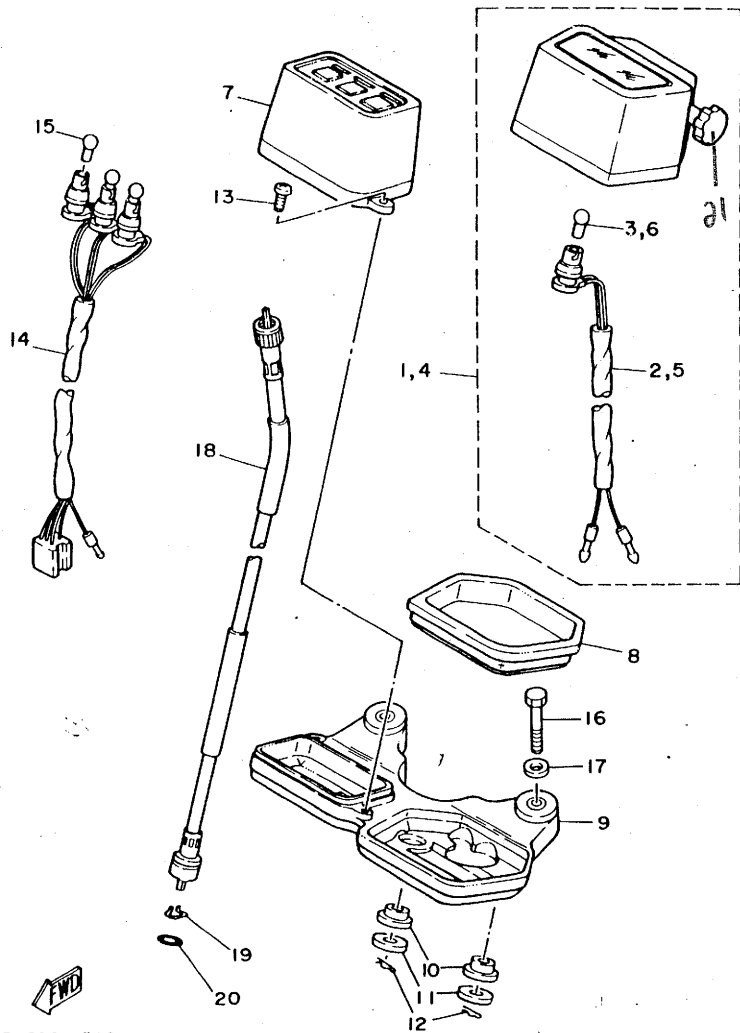
REF. NO.	PART NO.	DESCRIPTION	Q'TY	REMARKS
1	15A-83310-60	FRONT FLASHER LIGHT ASSY 1	2	
2	5Y1-83312-00	•LENS, flasher	1	
3	115-83311-60	•BULB (6V-18W)	1	
4	5Y1-83313-00	•GASKET, flasher lens	1	
5	98503-04010	•SCREW, Pan head	1	
6	97701-40530	•SCREW, tapping	1	
7	95702-12100	NUT, flange	1	
8	95702-12100	NUT, flange	1	
9	17F-83310-10	FLASHER LIGHT ASSY 1	2	
10	115-83311-60	•BULB (6V-18W)	1	
11	5Y1-83313-00	•GASKET, flasher lens	1	
12	5Y1-83312-00	•LENS, flasher	1	
13	98503-04010	•SCREW, Pan head	1	
14	97701-40530	•SCREW, tapping	1	
15	15A-83368-00	STAY, flasher	1	
16	15A-83369-00	STAY, flasher	1	
17	95701-12100	NUT, flange	1	
18	95701-12100	NUT, flange	1	

15X171-2310



D10

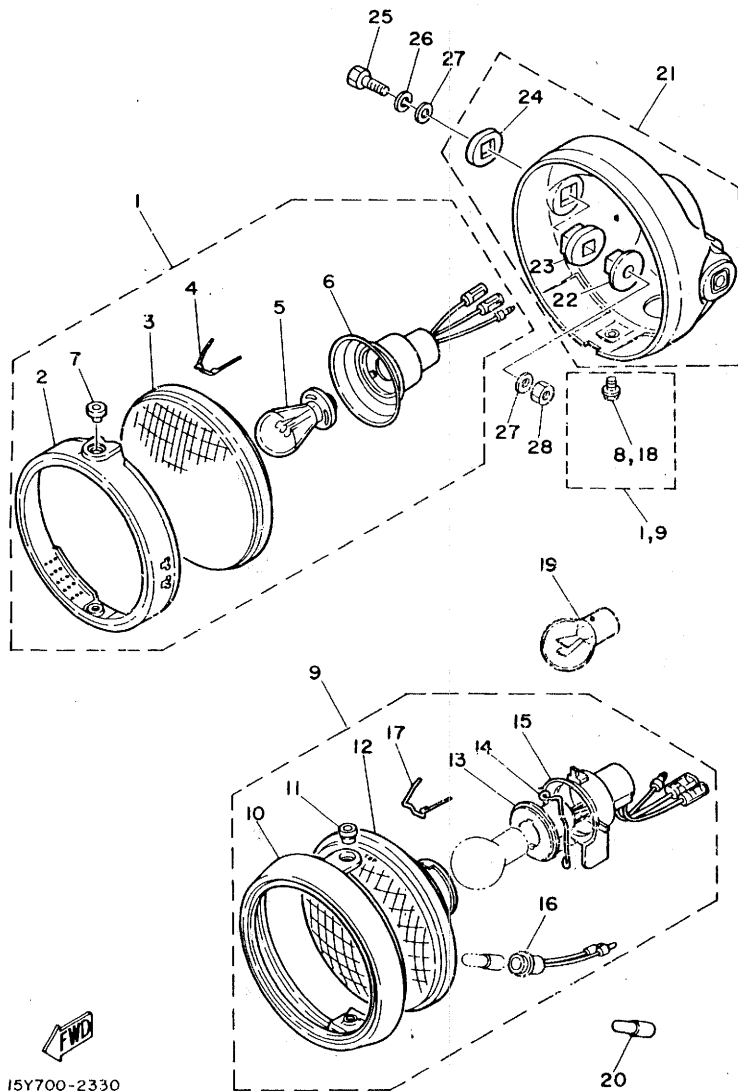
FIG. 32 SPEEDOMETER



REF. NO.	PART NO.	DESCRIPTION	Q'TY	REMARKS
1	10V-83570-F0	SPEEDOMETER ASSY	1	km/h
2	15A-83536-00	•SOCKET, meter	1	
3	122-83516-10	•BULB (6V-3W)	1	
4	12V-83570-G0	SPEEDOMETER ASSY	1	mPh
5	15A-83536-00	•SOCKET, meter	1	
6	122-83516-10	•BULB (6V-3W)	1	
7	15A-83568-00	PILOT BOX, uPPer	1	
8	5Y1-83513-00	DAMPER	1	
9	15A-83519-00	BRACKET, meter	1	
10	1M1-83526-00	DAMPER 2	2	
11	90201-05033	WASHER, Plate	2	
12	437-83525-00	CLIP	2	
13	98506-04014	SCREW, Pan head	2	
14	15A-83509-00	SOCKET CORD ASSY	1	
15	122-83516-10	BULB (6V-3W)	3	
16	97306-06040	BOLT	2	
17	92906-06600	WASHER, Plate	2	
18	3H6-83550-00	SPEEDOMETER CABLE ASSY	1	
19	102-25137-00	RING, stoP	1	
20	93210-14104	O-RING	1	
21	4K0-83578-00	TRIP SWITCH	1	

15Y700-2320

D11



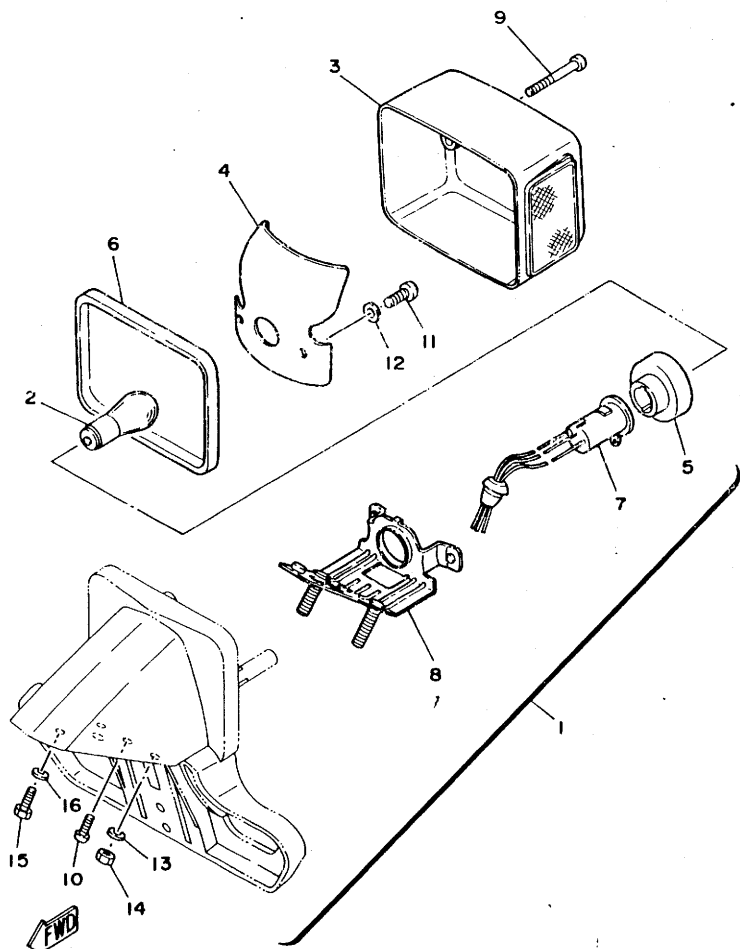
15Y700-2330

FIG. 33 HEADLIGHT

REF. NO.	PART NO.	DESCRIPTION	Q'TY	REMARKS
1	4F2-84110-00	HEADLIGHT UNIT ASSY	1	
2	3J0-84195-60	•RING, retaining	1	
3	4F2-84120-00	•LENS ASSY	1	
4	148-84324-00	•SPRING, reflector	3	
5	1R6-84114-30	•BULB (6V-35/35W)	1	
6	3Y3-84112-30	•SOCKET	1	
7	1M1-84133-60	•COLLAR, screw	1	
8	1M1-84137-60	•BOLT, sPecial	1	
9	3Y3-84103-20	HEADLIGHT UNIT ASSY	1	yellow bulb
10	3Y3-84115-00	•RIM, headlight	1	
11	1M1-84133-60	•COLLAR, screw	1	
12	308-84120-21	•LENS ASSY	1	
13	1N5-84112-20	•SOCKET	1	
14	308-84135-21	•SPRING	1	
15	3Y3-84197-20	•COVER, socket	1	
16	457-84146-85	•SOCKET, Pilot light	1	
17	195-84324-00	•SPRING, reflector	3	
18	1M1-84127-60	•BOLT, sPecial	1	
19	*	BULB (6V-36/36W)	1	LM
20	*	BULB (6V-4W)	1	LM
21	3J0-84130-60	BODY ASSY, headlight	1	black
22	498-84145-60	•COLLAR, body fitting	2	
23	498-84103-60	•DAMPER	2	
24	1M1-84164-60	•DAMPER	2	
25	97306-08045	BOLT	2	
26	92902-08100	WASHER, sPring	2	
27	92906-08200	WASHER, Plain	4	
28	95302-08600	NUT	2	

D12

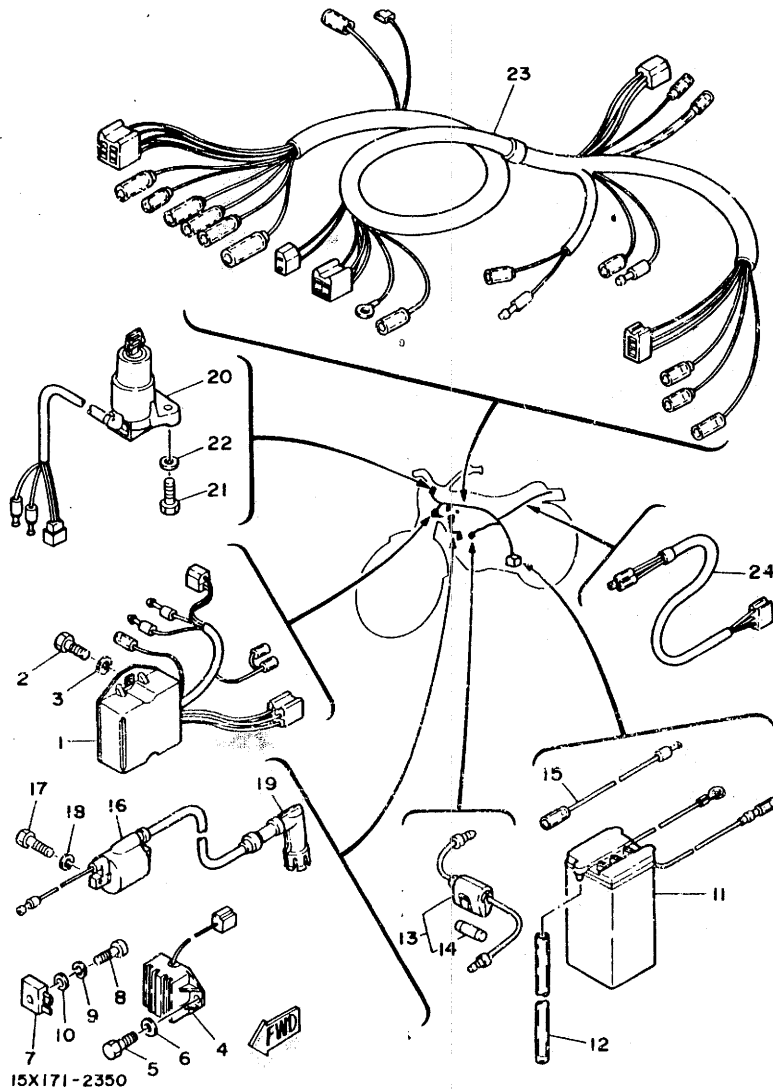
FIG. 34 TAILLIGHT



REF. NO.	PART NO.	DESCRIPTION	Q'TY	REMARKS
1	15A-84500-60	TAILLIGHT ASSY	1	
2	1M1-84514-60	BULB (6V-25/5.3W)	1	
3	1M1-84521-60	LENS, taillight	1	
4	3Y1-84531-00	REFLECTER, tail light	1	
5	15A-84736-00	DAMPER, tail l	1	
6	15A-84545-00	GASKET, lens	1	
7	15A-84536-00	SOCKET CORD ASSY	1	
8	15A-84552-00	BOLT, fitting	1	
9	3Y1-84524-00	SCREW, lens fitting	2	
10	98901-04008	SCREW, bind	1	
11	98501-04006	SCREW, Pan head	2	
12	92901-04100	WASHER, sPring	2	
13	92902-06100	WASHER, sPring	2	
14	95302-06600	NUT	2	
15	97302-06020	BOLT	1	
16	92902-06100	WASHER, sPring	1	

15X171-2340

D13



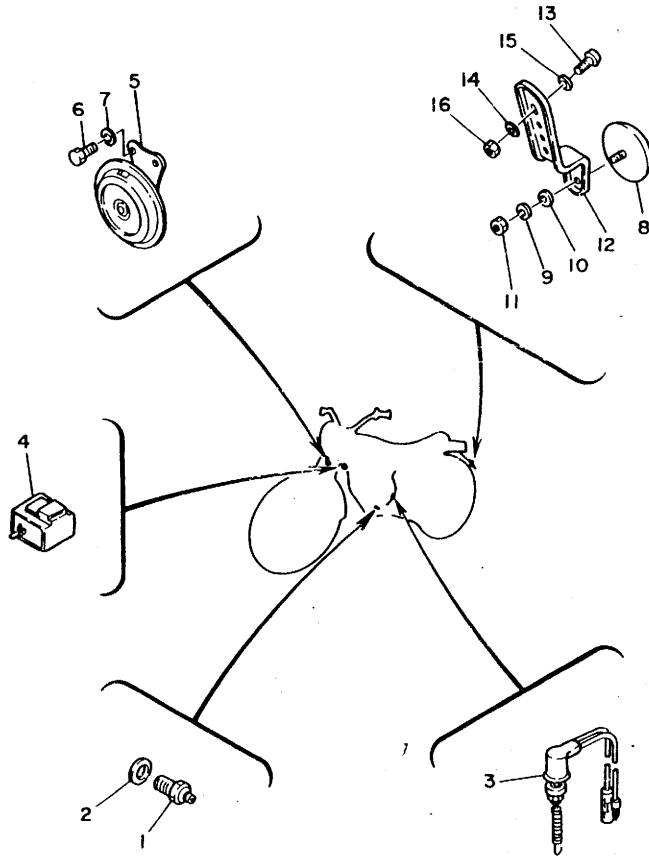
15X171-2350

FIG. 35 ELECTRICAL 1

REF. NO.	PART NO.	DESCRIPTION	Q'TY	REMARKS
1	12V-85540-M0	C.D.I. UNIT ASSY	1	
2	92502-06010	SCREW, Pan head	2	
3	92902-06100	WASHER, sPring	2	
4	10V-81910-60	VOLTAGE REGULATOR ASSY	1	
5	97301-06012	BOLT	2	
6	92901-06600	WASHER, Plate	2	
7	353-81970-50	RECTIFIER ASSY	1	
8	98501-05020	SCREW, Pan head	1	
9	92902-05100	WASHER, sPring	1	
10	92901-05600	WASHER, Plate	1	
11	104-82110-29	BATTERY ASSY (6N4A-4D)	1	
12	90445-08619	HOSE	1	
13	353-82150-00	FUSE HOLDER ASSY	1	
14	116-82151-00	FUSE (6V-10A)	1	
15	15A-82115-00	WIRE, Plus lead	1	
16	15A-82310-M0	IGNITION COIL ASSY	1	
17	97302-06020	BOLT	2	
18	92902-06100	WASHER, sPring	2	
19	5H0-82370-00	PLUG CAP ASSY	1	
20	15A-82508-00	MAIN SWITCH ASSY	1	
21	97301-06016	BOLT	2	
22	92902-06600	WASHER	2	
23	15Y-82590-00	WIRE HARNESS ASSY	1	
24	15A-84317-00	CORD, taillight	1	

D14

FIG. 36 ELECTRICAL 2



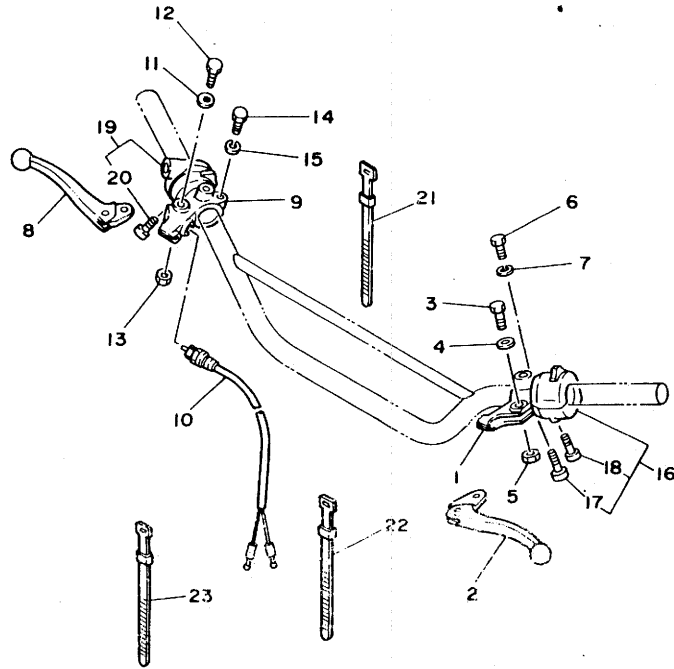
REF. NO.	PART NO.	DESCRIPTION	Q'TY	REMARKS
1	2H7-82540-00	NEUTRAL SWITCH ASSY	1	
2	90430-10148	GASKET	1	
3	2F1-82530-00	STOP SWITCH ASSY	1	
4	15A-83350-60	FLASHER RELAY ASSY	1	
5	15A-83371-00	HORN	1	
6	97302-06012	BOLT	2	
7	92902-06100	WASHER, sPring	2	
8	449-85131-01	REFLECTOR, rear 1	1	
9	92902-05100	WASHER, sPring	1	
10	92901-05600	WASHER, Plate	1	
11	95302-05600	NUT	1	
12	5Y1-85132-01	BRACKET, reflector 1	1	
13	92501-06012	SCREW, Pan head	2	
14	92901-06100	WASHER, sPring	2	
15	90201-06336	WASHER, Plate	2	
16	95301-06600	NUT	2	



15Y700-2360

D15

FIG. 37 HANDLE SWITCH•LEVER



REF. NO.	PART NO.	DESCRIPTION	Q'TY	REMARKS
1	498-82911-00	HOLDER, lever 1	1	
2	5Y1-83912-00	LEVER 1	1	
3	90109-06410	BOLT	1	
4	90201-08083	WASHER, Plate	1	
5	95601-06100	NUT, u	1	
6	97306-06022	BOLT	1	
7	92906-06100	WASHER, sPring	1	
8	5Y1-83922-00	LEVER 2	1	
9	361-82921-31	HOLDER, lever 2	1	
10	361-83980-30	FRONT STOP SWITCH ASSY	1	
11	90201-08083	WASHER, Plate	1	
12	90109-06410	BOLT	1	
13	95601-06100	NUT, u	1	
14	97306-06022	BOLT	1	
15	92906-06100	WASHER, sPring	1	
16	3G7-83972-00	SWITCH, handle 4	1	
17	98506-05030	SCREW, Pan head	1	
18	98506-05025	SCREW, Pan head	1	
19	15A-83976-00	SWITCH, handle 1	1	
20	98506-05022	SCREW, Pan head	2	
21	437-83936-00	BAND, switch cord	4	
22	437-83936-00	BAND, switch cord	1	
23	437-83936-10	BAND, switch cord	1	



15X171-2370

E2

NUMERICAL INDEX

NUMERICAL INDEX

PART NO.	GRID NO.	PART NO.	GRID NO.	PART NO.	GRID NO.	PART NO.	GRID NO.	PART NO.	GRID NO.	PART NO.	GRID NO.
5H0-W1411-00	B11	5H0-12176-00	B 7	15A-14628-00	B12	15A-18111-00	C 6	10V-22153-00	C10	15A-24110-00-01	C15
12T-W1418-00	B11	3Y1-12212-00	B 7	12V-14711-00	B12	132-18113-01	C 6	15A-22210-00	C11	3Y1-24161-20	C15
5H0-W1494-00	B11	3Y1-12217-00	B 7	4H7-14714-00	B12	5H0-18120-00	C 6	1W1-22216-00	C11	4H7-24181-00	C15
12T-W1496-00	B11	5H0-12231-00	B 7	15A-14718-01	C 9	4G0-18140-00	C 7	3R4-22226-00	C11	5Y1-24182-01	C15
15A-W2473-00	D 2	3Y1-12232-00	B 7	15A-14728-00	B12	5H0-18185-00	C 5	15A-22310-00	C10	11H-24183-00	C15
5H0-1111F-00	B 2	5N0-12241-00	B 7	583-14766-00	B12	5H0-18511-00	C 5	15A-23102-00	C13	11H-24186-00	C15
15A-11110-00	B 2	5H0-13300-00	B 8	5H0-14991-00	B11	5H0-18512-00	C 5	15A-23103-00	C13	15A-24240-00	C15
5H0-11133-10	B 2	5H0-13326-00	B 8	15A-15100-00	B13	5N0-18513-00	C 5	15A-23110-00	C13	15A-24500-01	C15
15A-11161-00	B 3	5H0-13329-00	B 8	5H0-15351-00	B 8	5H0-18531-00	C 5	1U6-23111-M1	C13	360-24512-00	B11
5H0-11161-00	B 3	3Y1-13411-00	B 8	3Y1-15361-00	B14	3Y1-18535-00	C 5		C14	4X8-24512-00	C15
5H0-11162-00	B 3	5H0-13440-00	B 8	3Y1-15363-00	B14	15A-18540-00	C 5	240-23114-00	C13	4X8-24534-00	C15
15A-11166-00	B13	15A-13447-00	B 8	15A-15411-00	B14	136-18542-00	C 5	15A-23118-00	C13	4X8-24535-00	C15
371-11167-01	B13	15A-13586-02	B 9	15A-15420-00	B14	12V-21110-00-98	C 7		C14	4X8-24565-00	C15
15A-11181-00	B 2	5H0-14115-00	B11	15A-15431-00	B14	5H0-21308-00	D 2	122-23119-01	C13	3Y1-24610-01	C15
15A-11185-00	B 2	15A-14118-00	B11	15A-15441-00	B 3	15A-21315-00	C 7		C14	15A-24731-00	D 2
15A-11186-00	B 2	5H0-14126-00	B11	15A-15451-00	B14	15A-21316-00	C 7	15A-23126-00-38	C13	15A-24738-00	D 2
15A-11187-00	B 2	1J2-14147-00	B11	15A-15462-00	B14	15A-21329-00	C 7	122-23129-00	C13	3Y1-24768-00	C 7
15A-11310-00	B 3	288-14161-00	B11	15A-15620-00	C 2	15A-21471-00-35	C 7		C14	15A-25104-00	D 3
15A-11351-00	B 3	12T-14301-00	B11	15A-15621-02	C 2	15A-21511-00	C 8	15A-23136-00-38	C13	15A-25111-00-98	D 3
15A-11400-00	B 4	5H0-14312-23	B11	15A-15641-01	C 2	15Y-21581-00	C12	15A-23141-00	C13	15A-25117-00	D 3
15A-11412-09	B 4	5H0-14331-00	B11	15A-15651-00	C 2	15Y-21591-00	C12	583-23142-00	C13	2K5-25118-00	D 4
5H0-11422-00	B 4	5H0-14341-00	B11	15A-15660-00	C 2	15A-2160E-00	C 8	15A-23144-00	C13	4F2-25121-00-98	D 3
15A-11454-00	B 4	396-14342-20	B11	15A-15666-00	C 2	15A-21611-00	C 8		C14	248-25135-11	D 3
5H0-11496-00	B 4	288-14343-61	B11	401-15676-00	C 2	15A-21621-00	B 9	1T3-23145-00	C13	109-25136-00	D 3
5H0-11531-00	B 4	5H0-14348-00	B11	5H0-16111-00	C 3	15A-21622-00	D 2	4A1-23156-00	C13	102-25137-00	D11
5H0-11536-00	B 4	5H0-14349-00	B11	15A-16150-00	C 3	15A-21642-00	D 2	509-23158-L0	C13	248-25138-11	D 3
15A-11610-00	B 4	15A-14371-00	B11	5H0-16154-00	C 3	15A-21649-00	C 8		C14	183-25149-00	D 3
15A-11610-20	B 4	5H0-14384-00	B11	537-16321-00	C 3	15A-21670-00	C 8	1U6-23168-M0	C13	2N3-25155-00	D 5
15A-11610-40	B 4	367-14385-01	B11	137-16324-00	C 3	15A-21691-01	B 9		C14	5H0-25155-00	D 3
15A-11631-00	B 4	626-14386-00	B11	5H0-16351-00	C 3	15A-21711-00-E1	C 9	15A-23170-00	C13	12V-25304-00	D 5
15A-11633-00	B 4	5H0-14397-00	B11	5H0-16356-01	C 3	15A-21717-00	C 9	5A8-23173-00	C13	15A-25311-00-98	D 5
15A-11636-00	B 4	15A-14411-00	B 9	5H0-16357-00	C 3	15A-21721-00-E1	C 9	15A-23174-00	C12	109-25315-00	D 3
15A-11638-00	B 4	15A-14412-00	B 9	1W1-16358-00	C 3	15A-2173E-00	C 9	278-23181-50	C13	183-25315-00	D 5
15A-11651-00	B 4	15A-14419-00	B 9	5H0-16371-01	C 3	15A-2173F-00	C 9		C14	248-25317-00	D 5
5H0-11681-00	B 4	15A-1442F-00	B 9	15A-16380-00	C 3	15A-21746-00	C 9	3Y1-2331E-00	C12	15A-25321-00-98	D 5
5H0-12111-00	B 6	15A-1443E-00	B10	15A-17121-00	C 4	15A-21747-00	C 9	5Y1-23317-00	C12	3Y6-2533A-01	D 3
4G0-12113-00	B 6	15A-14437-00	B 9	5H0-17121-01	C 4	15A-2177A-01	C 9	3Y1-23319-00	C12	4H7-2533A-02	D 5
4G0-12114-00	B 6	15A-14451-00	B 9	15A-17141-00	C 4	15A-2177E-00	C 9	12V-23340-20	C14	3Y1-25330-00	D 3
4G0-12116-01	B 6	15A-14453-02	B 9	15A-17151-00	C 4	15A-2177J-00	C 9	15A-23346-00	C14	5H0-25330-00	D 5
4G0-12117-00	B 6	15A-14458-01	B 9	15A-17211-01	C 4	15A-21781-00	C 9	15A-23389-00	C12	248-25351-10	D 3
4G0-12118-00	B 6	15A-14462-00	B 9	15A-17221-00	C 4	15A-22110-00-35	C10	122-23411-00	C12	3Y6-25351-00	D 5
5H0-12119-00	B 6	15A-14468-00	B 9	15A-17231-00	C 4	15A-22123-00	C10	156-23412-00	C12	2R7-25381-00	D 6
5H0-12121-00	B 6	15A-14472-00	B 9	15A-17241-00	C 4	15A-22126-00	C10	122-23412-00	C12	353-25381-00	D 4
5H0-12146-00	B 6	15A-14485-00	B 9	15A-17251-00	C 4	401-22127-00	C10	156-23412-00	C12	5H0-25388-00	D 5
5H0-12151-00	B 6	15A-14487-00	B 9	15A-17402-01	C 4	1W1-22128-00	C11	122-23416-00	C12	5H0-25389-00	D 5
5H0-12156-00	B 6	15A-14611-60	B12	15A-17411-01	C 4	401-22128-01	C10	15A-23435-00-98	C12	3Y1-25394-00	D 5
3Y1-12159-00	B 6	15A-14612-00	B12	5H0-17456-00	C 4	4V0-22141-00	C10	1E6-23441-00-98	C12	15A-25448-10-33	D 5
15A-12171-00	B 7	341-14613-00	B12	5H0-17461-50	C 4	15A-22151-01	C10	164-23462-00	C14	3G7-26111-00	D 7



NUMERICAL INDEX

PART NO.	GRID NO.	PART NO.	GRID NO.
1E6-26241-00	D 7	15A-83368-00	D10
1A0-26242-01	D 7	15A-83369-00	D10
434-26243-00	D 7	15A-83371-00	D15
1M1-26249-01	D 7	15A-83509-00	D11
1Y1-26290-30	D 7	5Y1-83513-00	D11
1Y1-26290-40	D 7	122-83516-10	D11
1Y1-26290-50	D 7	15A-83519-00	D11
1Y1-26290-60	D 7	437-83525-00	D11
15A-26311-00	D 7	1M1-83526-00	D11
15A-26335-00	D 7	15A-83536-00	D11
15A-26341-00	D 7	3H6-83550-00	D11
1E6-26342-00	D 7	15A-83568-00	D11
1E6-26372-00	D 7	10V-83570-F0	D11
3Y1-26397-00	D 7	12V-83570-G0	D11
128-27114-00	D 7	5Y1-83912-00	E 2
15A-27211-00-98	D 8	5Y1-83922-00	E 2
15A-27231-00	D 8	437-83936-00	E 2
1M1-27244-00	D 8	437-83936-10	E 2
12V-27311-00-33	D 8	3G7-83972-00	E 2
15A-27410-00-R4	D 8	15A-83976-00	E 2
15A-27420-00-R4	D 8	361-83980-30	E 2
120-27430-02	D 8	3Y3-84103-20	D12
120-27431-00	D 9	4F2-84110-00	D12
120-27432-02	D 8	1N5-84112-20	D12
120-27433-00	D 9	3Y3-84112-30	D12
5H0-28100-10	C 9	1R6-84114-30	D12
15A-81350-M0	B15	3Y3-84115-00	D12
15A-81410-M0	B15	308-84120-21	D12
10V-81910-60	D14	4F2-84120-00	D12
353-81570-50	D14	3J0-84130-60	D12
104-82110-29	D14	1M1-84133-60	D12
15A-82115-00	D14	308-84135-21	D12
353-82150-00	D14	1M1-84137-60	D12
116-82151-00	D14	498-84145-60	D12
15A-82310-M0	D14	*	D12
5H0-82370-00	D14	457-84146-85	D12
15A-82508-00	D14	498-84163-60	D12
2F1-82530-00	D15	1M1-84164-60	D12
2H7-82540-00	D15	3J0-84195-60	D12
15Y-82590-00	D14	3Y3-84197-20	D12
498-82911-00	E 2	148-84324-00	D12
361-82921-31	E 2	195-84324-00	D12
15A-83310-60	D10	15A-84500-60	D13
17F-83310-10	D10	1M1-84514-60	D13
115-83311-60	D10	15A-84517-00	D14
5Y1-83312-00	D10	1M1-84521-60	D13
5Y1-83313-00	D10	3Y1-84524-00	D13
15A-83350-60	D15	3Y1-84531-00	D13

PART NO.	GRID NO.	PART NO.	GRID NO.
15A-84536-00	D13	90201-062A8	C10
15A-84545-00	D13	90201-06336	D15
15A-84552-00	D13	90201-07076	D 3
15A-84736-00	D13	90201-08083	E 2
449-85131-01	D15	90201-08326	B12
5Y1-85132-01	D15	90201-08366	C 7
12V-85540-M0	D14	90201-08609	B 2
15A-85580-M0	B15	90201-10125	C11
90101-06276	D 3	90201-10508	B 5
90101-10188	E 5	90201-10551	D 7
90101-10303	B 7	90201-12588	C 6
90105-08066	D11	90201-12729	D 4
90105-06195	B 2	90201-17257	C 4
90105-10558	D 8	90201-173F4	C 2
90105-14102	C12	90201-175F6	C 2
90109-06410	E 2	90201-201E4	B 4
90109-06419	E 2	90201-20269	D 3
90109-10554	C11	90201-20279	D 9
90109-10635	D 8	90201-203E7	C 4
90116-08218	D 5	90202-06010	C15
90119-05062	C10	90206-06060	C 8
90119-06063	C 8	90209-18209	C 4
90123-08046	D 7	90209-17226	C 2
90149-05011	C15	90209-18208	C 4
90149-08067	C 3	90214-17028	C 2
90149-14146	D 7	90214-20023	B 4
90151-06013	C 5	90215-06184	B 2
90152-05010	C 2	90215-08160	D 5
90153-06029	B 2	90215-14185	B 5
90153-06037	C 9	90215-14186	C 3
90159-05011	C 3	90215-14205	C 3
90170-06128	B 6	90240-06009	D 9
90170-08258	D 5	90240-06040	D 8
90170-14284	B 5	90240-07083	B 4
90171-10004	D 4	90240-12092	C11
90171-14031	D 6	90249-06145	C 8
90175-06013	D 8	90249-1200R	D 8
90179-08148	D 7	90257-32071	C 2
90179-14298	B 7	90267-40073	B 9
90179-25033	D12	90267-40075	C 8
90185-08089	C 7	90280-05013	B 5
90185-10037	D 8	90282-05013	B 5
90185-12072	C10	90282-05043	C 3
90201-047A2	B 9	90338-09130	D 4
90201-05033	D11	90340-14079	B14
90201-06008	C 8	90340-32080	B14
		90380-12051	C11
		90386-14103	C 3

NUMERICAL INDEX

PART NO.	GRID NO.	PART NO.	GRID NO.
90386-18028	C10	91316-06020	B12
90387-06388	C 9	91316-06030	B 3
90387-06763	C 9	91316-08020	B12
		91316-08045	B 2
90387-07789	C 8	91401-16015	D 9
90387-125F1	B13	91401-20015	D 8
90387-126F8	D 4	91401-20020	D 4
90387-155F2	D 6	91401-25015	D 8
90387-15770	D 5	91401-30025	C11
90387-255F3	B 7	91401-30030	D 6
90430-06014	B 2	91609-25018	C 8
90430-08119	C 3	91701-08038	D 8
90430-10148	D15	91830-22016	B13
90430-14131	B12		B14
90445-08619	D 2	91830-24016	B 2
90445-10638	C15		B 3
90460-43179	B 9	92501-06010	B14
90460-45104	B10	92501-06012	C 7
90465-08188	B14		C12
90465-08200	B13		D15
90465-16187	B14	92501-06020	B15
90467-09006	C15	92502-06010	D14
90467-14015	B13	92506-06012	C 9
90468-26122	C 2	92506-06016	C10
90480-12053	C 2	92506-06020	B 2
90480-1232C	C 9	92506-06025	B 8
90480-13197	C 9		B14
90480-14102	C 9	92506-06030	B13
90480-16278	B 9	92506-06035	B14
90501-07629	B 4	92506-06040	B13
90501-10245	D 8	92506-06045	B14
90501-10587	B 7	92506-06060	B13
90501-12081	C 2	92506-06075	B 8
90501-18576	B 8	92506-06085	B13
90501-21133	B 4	92701-06015	D 2
90501-23700	C 3	92701-06030	B 8
90506-08227	C 6	92901-04100	B11
90506-15260	D 5		D13
90506-16036	D 3	92901-05600	C 9
90506-18289	D 8		D 7
90507-29009	D 8		D14
90508-18537	C 3		D15
90508-20023	D 8	92901-06100	C 8
90508-26538	C 2		C12
90508-26539	C 5		D15
90508-29540	C 6	92901-06200	C 3
91316-06018	B 2		D 8
91316-06020	B 9	92901-06600	B 7

PARTS NAME INDEX

DESCRIPTION	GRID NO.
ABSORBER 1	B 3
*	B 3
ABSORBER 2	B 3
ARM, valve rocker	B 6
AXLE, main	C 4
AXLE, wheel	D 4
*	D 6
BACK MIRROR ASSY (L.H)	D 7
*	D 7
BACK MIRROR ASSY (R.H)	D 7
*	D 7
BALL	C 2
*	C 3
*	C 12
*	C 12
BAND	D 7
BAND, flap	D 2
BAND, rim (3.00-18)	D 5
BAND, rim (3.00-21)	D 4
BAND, switch cord	E 2
*	E 2
*	E 2
BAR, shift fork guide 1	C 5
BAR, shift fork guide 2	C 5
BATTERY ASSY (6N4A-4D)	D 14
BEARING	B 4
*	B 4
*	C 4
*	C 4
BEARING (B6202)	D 5
BEARING (B6202RS)	D 5
BEARING (B6204)	C 4
BEARING (B6301)	D 3
BEARING (B6304A3)	C 4
BEARING (B6306)	B 4
BEARING, cylindrical	B 4
BODY ASSY, headlight	D 12
BOLT	B 2
*	B 2
*	B 2
*	B 3
*	B 5
*	B 7
*	B 7
*	B 8
*	B 9

PARTS NAME INDEX

DESCRIPTION	GRID NO.
BOLT	B 10
*	B 12
*	B 12
*	C 2
*	C 4
*	C 6
*	C 7
*	C 8
*	C 8
*	C 11
*	C 12
*	C 12
*	C 15
*	D 2
*	D 2
*	D 3
*	D 5
*	D 7
*	D 7
*	D 8
*	D 8
*	D 11
*	D 12
*	D 13
*	D 14
*	D 14
*	D 15
*	E 2
*	E 2
*	E 2
BOLT 1	C 14
BOLT, cap	C 13
*	C 14
BOLT, fitting	D 13
BOLT, flange	B 12
*	C 7
*	C 7
*	C 7
*	C 9
*	C 10
*	C 12
*	C 12
*	D 8
BOLT, hexagon socket head	C 13
*	C 14
BOLT, special	D 12

PARTS NAME INDEX

DESCRIPTION	GRID NO.
BOLT, special	D 12
BOLT, stud	D 5
BOLT, washer based	B 2
*	C 7
*	C 12
*	D 8
BOLT, with washer	C 8
*	C 10
BOOT, cable	D 7
*	D 7
BOSS, buffer	B 4
BOSS, clutch	C 3
BOSS, kick crank	C 2
BOX	C 8
*	C 9
BRACKET 1	D 8
BRACKET, meter	D 11
BRACKET, reflector 1	D 15
BRACKET, seat	D 2
BRAKE SHOE COMP.	D 3
*	D 5
BULB (6V-18W)	D 10
*	D 10
BULB (6V-25/5.3W)	D 13
BULB (6V-3W)	D 11
*	D 11
*	D 11
BULB (6V-35/35W)	D 12
BULB (6V-36/36W)	D 12
BULB (6V-3W)	D 11
*	D 11
*	D 11
BULB (6V-35/35W)	D 12
BULB (6V-4W)	D 12
BUSH	C 3
*	C 10
*	D 3
BUSH 1	C 10
BUSH, rear shock absorber	C 11
BUSH, shock absorber lower	C 11
BUSH, solid	C 11
C.D.I. UNIT ASSY	D 14
CABLE, brake	D 7
CABLE, clutch	D 7
CABLE, throttle 1	D 7
CAMSHAFT	D 3
*	D 5
CAMSHAFT 1	B 7
CAP	B 11
CAP ASSY	C 15
CAP, cleaner case 1	B 9
CAP, front fork	C 13
*	C 14

PARTS NAME INDEX

DESCRIPTION	GRID NO.
CARBURETOR ASSY 1	B11
CASE, air cleaner 1	B 9
CASE, chain tensioner	B 7
CHAIN	B 7
*	D 6
CHAIN CASE ASSY	C10
CIRCLIP	B 2
*	B 4
*	C 2
*	C 2
*	C 3
*	C 4
*	C 4
*	C 4
*	C 6
*	D 3
CLAMP	B13
*	B14
*	B14
CLAMP, hose	B 9
*	B10
CLIP	B13
*	C 2
*	C15
*	D11
CLIP, oil seal	C13
*	C13
CLUTCH, meter	D 3
COIL, Pulser	B15
COLLAR	B 7
*	B13
*	B13
*	C 8
*	C 9
*	C 9
*	D 4
*	D 5
*	D 6
COLLAR, body fitting	D12
COLLAR, distance	C10
COLLAR, screw	D12
*	D12
CORD, taillight	D14
COTTER, valve	B 6
COVER	D 8
COVER, ball race 2	C12
COVER, crankcase 1	B14

PARTS NAME INDEX

DESCRIPTION	GRID NO.
COVER, crankcase 3	B14
COVER, cylinder head side 1	B 2
COVER, cylinder head side 2	B 2
COVER, cylinder head side 3	B 2
COVER, double seat	D 2
COVER, handle lever 1	D 7
*	D 7
COVER, hub dust	D 4
COVER, oil element	B 8
COVER, rear footrest	D 9
COVER, shift Pedal	C 6
COVER, side 1	C 9
COVER, side 2	C 9
COVER, socket	D12
COVER, spring	C 2
COVER, thrust 1	C11
CRANK 1	B 4
CRANK 2	B 4
CRANKCASE ASSY	B13
CRANKCASE COVER ASSY 2	B14
CRANKSHAFT ASSY	B 4
CROWN, handle	C12
CYLINDER	B 3
CYLINDER COMP., front fork	C13
*	C13
CYLINDER HEAD ASSY	B 2
DAMPER	B 7
*	C 8
*	C 9
*	C 9
*	D11
*	D12
*	D12
*	D11
DAMPER 2	D11
DAMPER, locating 1	C15
DAMPER, locating 2	C15
DAMPER, locating 3	C15
DAMPER, side cover	C 9
DAMPER, tail 1	D13
DRIVE AXLE ASSY	C 4
DUCT	B 9
ELEMENT ASSY, oil cleaner	B 8
ELEMENT, air cleaner	B 9
EMBLEM 1	C 9
*	C,9
*	C15
FENDER, front	C 8
FENDER, rear	C 8

PARTS NAME INDEX

DESCRIPTION	GRID NO.
FLANGE, spacer	D 3
*	D 5
FLAP	B 9
*	B 9
FLASHER RELAY ASSY	D15
FLOAT	B11
FOOTREST, rear 1	D 9
FORK, shift 1	C 5
FORK, shift 2	C 5
FORK, shift 3	C 5
FRAME COMP	C 7
FRONT FLASHER LIGHT ASSY 1	D10
FLASHER LIGHT ASSY 1	D10
FRONT FOOTREST ASSY (L.H)	D 8
FRONT FOOTREST ASSY (R.H)	D 8
FRONT FORK ASSY (L.H)	C13
FRONT FORK ASSY (R.H)	C13
FRONT STOP SWITCH ASSY	E 2
FUEL COCK ASSY 1	C15
FUEL TANK COMP.	C15
FUSE (6V-10A)	D14
FUSE HOLDER ASSY	D14
GASKET	B 2
*	B 2
*	B11
*	B11
*	C 3
*	C13
*	C13
*	C13
*	C14
*	C15
*	C15
*	D15
GASKET, crankcase cover	B14
GASKET, crankcase cover 3	B14
GASKET, cylinder	B 3
GASKET, cylinder head 1	B 2
GASKET, drain Plug	C13
*	C14
GASKET, exhaust Pipe	B12
GASKET, flasher lens	D10
*	D10
GASKET, float chamber	B11
GASKET, lens	D13
GASKET, muffler	B12
GASKET, Pump cover	B 8
GAUGE, level	B14

PARTS NAME INDEX

DESCRIPTION	GRID NO.
GEAR, balance wt (36T)	B 4
GEAR, drive	D 3
GEAR, drive (38T)	B 4
GEAR, kick (27T)	C 2
GEAR, kick idle (28T)	C 2
GEAR, meter	D 3
GEAR, Primary drive (22T)	C 3
GEAR, Pump driven 2 (45T)	B 8
GEAR, 1st wheel (12T)	C 4
GEAR, 2nd Pinion (19T)	C 4
GEAR, 2nd Pinion (22T)	C 4
GEAR, 2nd wheel (34T)	C 4
GEAR, 3rd wheel (29T)	C 4
GEAR, 4th Pinion (25T)	C 4
GEAR, 4th wheel (26T)	C 4
GEAR, 5th Pinion (28T)	C 4
GEAR, 5th wheel (23T)	C 4
GRAPHIC SET	C15
GRAPHIC 1	C 9
GRAPHIC 2	C 9
GRIP (L.H)	D 7
GRIP (R.H)	D 7
GROMMET	B 9
*	C 9
*	C 9
*	C 9
GUARD, chain	C10
GUARD, flap	D 2
GUIDE	B 9
GUIDE, cable	C12
*	C12
GUIDE, intake valve (1ST D/S)	B 2
GUIDE, stopper 1	3 7
GUIDE, stopper 2	B 7
HANDLEBAR	D 7
HEADLIGHT UNIT ASSY	D12
*	D12
HELMET HANGER ASSY	D 2
HOLDER, cable	C12
HOLDER, cable 2	C12
*	C12
HOLDER, clutch cable	B 3
HOLDER, handle upper	C12
HOLDER, lever 1	E 2
HOLDER, lever 2	E 2
HOLDER, sprocket	C 4
HORN	D15

PARTS NAME INDEX

DESCRIPTION	GRID NO.
HOSE	C15
*	D14
HUB, front	D 3
HUB, rear	D 5
IGNITION COIL ASSY	D14
INNER TUBE COMP.1	C13
*	C13
JET, main (#125)	B11
JET, Pilot (#040)	B11
JOINT, air cleaner 1	B 9
JOINT, carburetor 1	B 9
JOINT, chain	D 6
KEY, straight	B 5
*	C 3
KEY, woodruff	B 5
KICK AXLE ASSY	C 2
KICK CRANK ASSY	C 2
LENS ASSY	D12
*	D12
LENS, flasher	D10
*	D10
LENS, taillight	D13
LEVER 1	E 2
LEVER 2	E 2
LEVER, camshaft 1	D 3
*	D 5
LID	C 8
LID 2	C 9
MAIN SWITCH ASSY	D14
MUFFLER 1	B12
NEEDLE SET	B11
NEUTRAL SWITCH ASSY	D15
NOZZLE, main	B11
NUT	B 5
*	B 6
*	B 7
*	C 3
*	C 3
*	C 3
*	C 3
*	C 3
*	C 8
*	C12
*	D 3
*	D 5
*	D 5
*	D 7
*	D 7
*	D 7

PARTS NAME INDEX

DESCRIPTION	GRID NO.
NUT	D 8
*	D 9
*	D12
*	D13
*	D15
*	D15
NUT, cable adjusting	B11
NUT, castle	D 4
*	D 6
NUT, flange	D10
*	D10
*	D10
*	D10
NUT, ring	B12
NUT, self-locking	C 7
*	C 7
*	C 7
*	C10
*	D 8
NUT, u	C11
*	E 2
*	E 2
NUT, wing	D 8
O-RING	B 2
*	B 2
*	B 3
*	B 3
*	B 5
*	B 7
*	B 8
*	B 8
*	B 8
*	B 9
*	B11
*	B11
*	B14
*	B14
*	B14
*	C 3
*	D11
OIL PUMP ASSY	B 8
OIL SEAL	C 2
*	C 3
*	C 4
*	C 4
*	C 6
*	C10
*	C13

PARTS NAME INDEX

DESCRIPTION	GRID NO.
OIL SEAL	C13
*	D 3
*	D 3
*	D 3
*	D 5
PEDAL, brake	D 8
PEDAL, shift	C 6
PILOT BOX, upper	D11
PILOT SCREW SET	B11
PIN	C 8
*	D 8
PIN, clevis	B 4
*	C11
*	D 8
*	D 8
*	D 8
*	D 9
PIN, cotter	C11
*	D 4
*	D 6
*	D 8
*	D 8
*	D 8
*	D 9
PIN, crank 1	B 4
PIN, dowel	B 2
*	B 3
*	B 4
*	B 4
*	B 7
*	B 8
*	B13
*	B14
*	B14
*	C 5
*	C 5
*	C 6
PIN, float	B11
PIN, piston	B 4
PIN, spring	C 8
PIPE	B 9
*	B11
PIPE 1	B11
PIPE, breather 1	B13
PIPE, breather 2	B13
PIPE, drain	B10
PIPE, exhaust 1	B12
PIPE, joint	B 9

PARTS NAME INDEX

DESCRIPTION	GRID NO.
PISTON (STD)	B 4
PISTON (2ND O/S 0.50MM)	B 4
PISTON (4TH O/S 1.00MM)	B 4
PISTON RING SET (STD)	B 4
PISTON RING SET (2ND O/S)	B 4
PISTON RING SET (4TH O/S)	B 4
PLATE	B 2
*	C 7
PLATE, brake shoe	D 3
*	D 5
PLATE, clutch 1	C 3
PLATE, element	B 9
PLATE, element fitting	B 9
PLATE, friction	C 3
PLATE, indicator	D 3
*	D 5
PLATE, pressure 1	C 3
PLATE, push	C 3
PLATE, thrust 1	C 3
PLUG	D 4
PLUG CAP ASSY	D14
PLUG, drain	B 8
*	C13
*	C14
PLUG, oil	B14
PLUG, screw	B11
PLUG, spark (ND X24ES-U)	B 2
PLUG, spark (NGK D8EA)	B 2
PLUG, straight screw	B14
*	B14
PLUNGER, starter	B11
POINT, neutral	C 5
PRIMARY DRIVEN GEAR COMP.73/17	C 3
PROTECTOR, exhaust pipe	B12
PROTECTOR, muffler 2	B12
PROTECTOR	B 9
PROTECTOR, engine	C 7
PROTECTOR, muffler 1	C 9
PULLER, chain 1	D 5
PULLER, chain 2	D 5
PUSH LEVER ASSY	C 3
RACE, ball 1	C12
*	C14
RACE, ball 2	C12
*	C12
REAR ARM COMP.	C10
REAR FOOTREST ASSY 1	D 8
RECTIFIER ASSY	D14

PARTS NAME INDEX

DESCRIPTION	GRID NO.
REFLECTOR, tail light	D13
REFLECTOR, rear 1	D15
REINF. COMP.	C 8
RETAINER, valve spring	B 6
RIM (1.60-21)	D 3
RIM (1.85-18)	D 5
RIM, headlight	D12
RING, leaf	D 7
RING, retaining	D12
RING, stop	D11
RIVET, blind	B 9
*	C 8
*	D 2
ROD, brake	D 8
ROD, chain tensioner	B 7
ROD, connecting	B 4
ROD, push 1	C 3
ROD, push 2	C 3
ROTOR ASSY	B15
SCREW	B 7
*	B11
*	C 3
*	C15
SCREW, blind	B12
*	B12
*	D13
SCREW, countersunk	C 2
*	C 5
SCREW, flat head	B 8
*	D 2
SCREW, hexagon	B 2
*	C 9
SCREW, lens fitting	D13
SCREW, lever fitting	C15
SCREW, Pan head	B 2
*	B 8
*	B 8
*	B 9
*	B11
*	B13
*	B13
*	B13
*	B14
*	B14
*	B14
*	B14
*	B14
*	B14

PARTS NAME INDEX

DESCRIPTION	GRID NO.
SCREW, Pan head	B 14
*	B 14
*	B 15
*	B 15
*	B 15
*	C 7
*	C 9
*	C 9
*	C 10
*	C 12
*	D 7
*	D 10
*	D 10
*	D 11
*	D 13
*	D 14
*	D 14
*	D 15
*	E 2
*	E 2
*	E 2
SCREW, tapping	B 9
*	B 9
*	B 9
*	D 10
*	D 10
SCREW, valve adjusting	B 6
SCREW, with washer	C 3
SEAL	B 9
SEAL, cock	C 15
SEAL, dust	C 13
*	C 14
SEAL, Guard	C 10
*	C 10
SEAL, steering	C 14
SEAL, valve stem	B 6
SEAT, spring upper	C 13
*	C 13
SEAT, valve spring	B 6
SEGMENT	C 5
SEMI-DOUBLE SEAT ASSY	D 2
SHAFT, Pivot	C 10
SHAFT, rocker	B 6
SHAFT, rocker 2	B 6
SHIFT CAM ASSY	C 5
SHIFT LEVER ASSY	C 6
SHIM	C 10
SHOCK ABSORBER ASSY, rear	C 11

PARTS NAME INDEX

DESCRIPTION	GRID NO.
SOCKET	D 12
*	D 12
SOCKET CORD ASSY	D 11
*	D 13
SOCKET, meter	D 11
*	D 11
SOCKET, Pilot light	D 12
SPACER	C 2
*	C 13
*	C 14
SPACER, bead	D 5
SPACER, bearing	D 3
*	D 5
SPEEDOMETER ASSY	D 11
*	D 11
SPEEDOMETER CABLE ASSY	D 11
SPINDLE, taper	C 13
*	C 13
SPOKE SET, front	D 3
SPOKE SET, rear	D 5
SPRING	9 9
*	D 12
SPRING, compression	B 4
*	B 4
*	B 7
*	B 8
*	C 2
*	C 3
*	D 6
SPRING, front fork	C 13
*	C 13
SPRING, reflector	D 12
*	D 12
SPRING, tension	C 6
*	D 3
*	D 5
*	D 8
*	D 8
*	D 8
*	D 8
SPRING, throttle valve	B 11
SPRING, torsion	C 2
*	C 3
*	C 5
*	C 6
*	D 8
*	D 8
*	D 8
SPRING, valve inner	B 6
SPRING, valve outer	B 6
SPROCKET, cam chain (40T)	B 7

PARTS NAME INDEX

DESCRIPTION	GRID NO.
SPROCKET, drive (15T)	C 4
SPROCKET, driven (48T)	D 5
STAND, side	D 8
STATOR ASSY	B 15
STAY, engine 2	C 7
STAY, engine 3	C 7
STAY, flasher	D 10
*	D 10
STAY, headlight	C 12
STAY, Plate fitting 1	C 12
STAY, Plate fitting 2	C 12
STOP SWITCH ASSY	D 15
STOPPER	C 7
STOPPER LEVER ASSY	C 5
STOPPER, main stand	C 7
STRAINER, oil	B 8
SWITCH, handle 1	E 2
SWITCH, handle 4	E 2
TAILLIGHT ASSY	D 13
THROTTLE SCREW SET	B 11
TIRE (2.75-21)	D 3
TIRE (4.10-18)	D 5
TOOL KIT	C 9
TUBE (2.75-21)	D 3
TUBE (4.10-18)	D 5
TUBE, outer 1	C 13
TUBE, outer 2	C 13
TUBE, throttle Guide	D 7
UNDER BRACKET COMP.	C 14
VALVE SEAT SET	B 11
VALVE, exhaust	B 6
VALVE, intake	B 6
VALVE, throttle 1	B 11
VOLTAGE REGULATOR ASSY	D 14
WASHER	B 10
*	C 2
*	C 4
*	C 4
*	C 7
*	C 7
*	C 8
*	C 8
*	D 14
WASHER, claw	B 4
*	C 2
WASHER, lock	B 2

PARTS NAME INDEX

DESCRIPTION	GRID NO.
WASHER, lock	B 5
*	C 3
*	C 3
*	D 5
WASHER, Plain	B 9
*	C 3
*	C 8
*	D 4
*	D 8
*	D12
WASHER, Plate	B 2
*	B 4
*	B 5
*	B 7
*	B 7
*	B 9
*	B 9
*	B12
*	C 2
*	C 2
*	C 4
*	C 4
*	C 6
*	C 7
*	C 7
*	C 7
*	C 8
*	C 8
*	C 8
*	C 9
*	C 9
*	C10
*	C11
*	C11
*	C15
*	D 3
*	D 3
*	D 4
*	D 7
*	D 9
*	D11
*	D11
*	D14
*	D14
*	D15
*	D15
*	E 2
*	E 2

PARTS NAME INDEX

DESCRIPTION	GRID NO.
WASHER, Protector	B12
*	B12
WASHER, sPecial	C15
WASHER, sPring	B 5
*	B10
*	B11
*	B15
*	B15
*	C 7
*	C 7
*	C 8
*	C 8
*	C 9
*	C10
*	C12
*	C12
*	C12
*	C14
*	D 2
*	D 2
*	D12
*	D13
*	D13
*	D13
*	D14
*	D14
*	D14
*	D15
*	D15
*	D15
*	E 2
*	E 2
WASHER, wave	C 8
WEIGHT 1	B 4
WIRE HARNESS ASSY	D14
WIRE, Plus lead	D14

M16

