



# PARTS CATALOGUE

## XC125E (4P71) TURKEY

---



1E4P7-516E1

( )

XC125E  
PARTS CATALOGUE  
©2005 by Yamaha Motor Co., Ltd.  
1st edition, December 2005  
All rights reserved.  
Any reprinting or unauthorized use  
without the written permission of  
Yamaha Motor Co., Ltd.  
is expressly prohibited.  
Printed in Japan.

# FOREWORD

This Parts Catalogue is related to the parts for the model(s) on the cover page. When you are ordering replacement parts, please refer to this Parts Catalogue and quote both part numbers and part names correctly.

1. Modifications or additions which have been made after the issue of the Parts Catalogue will be announced in the Parts News.

It is advisable that you make the necessary corrections to the Parts Catalogue according to the Parts News.

2. Abbreviations

The following abbreviations are used in this Parts Catalogue.

“UR” Use specified parts number.

“UN” Use as many as needed.

“AP” Alternate Parts

“LM” Locally Made (Parts need to be ordered locally)

“F#” Frame No. (Applicable machine No.)

“O/S” Over Size

3. The number of components for assembly

- Parts, which are to be supplied in an assembly, are listed with a dot (.) in front of the part name as shown below.
- The numeral appearing to the right of each component part indicates the quantity of parts for each assembly unit.

PART NO.	DESCRIPTION	Q'TY	REMARKS
2F5-83310-60	FRONT FLASHER LIGHT ASSY	2	
115-83311-60	.BULB (6V-18W)	1	

4. Applicable colours of graphics are represented in the “REMARKS” as shown below.

PART NO.	DESCRIPTION	Q'TY	REMARKS
2N4-24110-00-X5	FUEL TANK COMP.	2	MXR
3J1-24240-10	.GRAPHIC, FUEL TANK	1	FOR MXR

5. Note that the illustrations for reference in finding parts numbers are not to be used for assembling. When assembling, please use the applicable service manual.

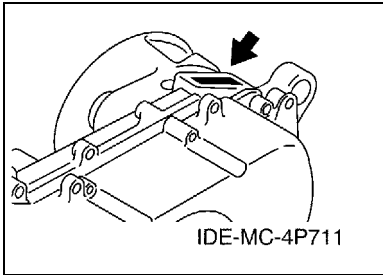
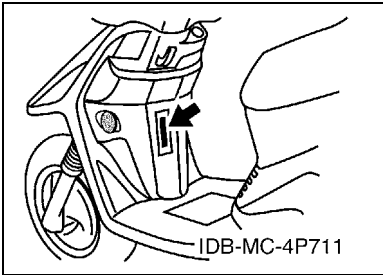
6. The asterisk (\*) before a reference number indicates modified items after the first edition.

# FOREWORD

7. Applicable Serial No.

Frame Serial No.

Engine Serial No.



8. Applicable Colour Code (The (\*) mark shows Model colour.)

Abbreviation	Colour Name	Colour Code
DPBMC(*)	DEEP PURPLISH BLUE METALLIC C	0564
MRE(*)	MATURE RED	00FE
S3(*)	SILVER 3	0791
SL	SILVER	0035
SMX	BLACK METALLIC X	0903

9. Applicable Starting Serial No.

Frame Serial No.

Serial No.	Name Of Q'ty Column	Model Code

Engine Serial No.

Serial No.	Name Of Q'ty Column	Model Code

# CONTENTS

## ENGINE

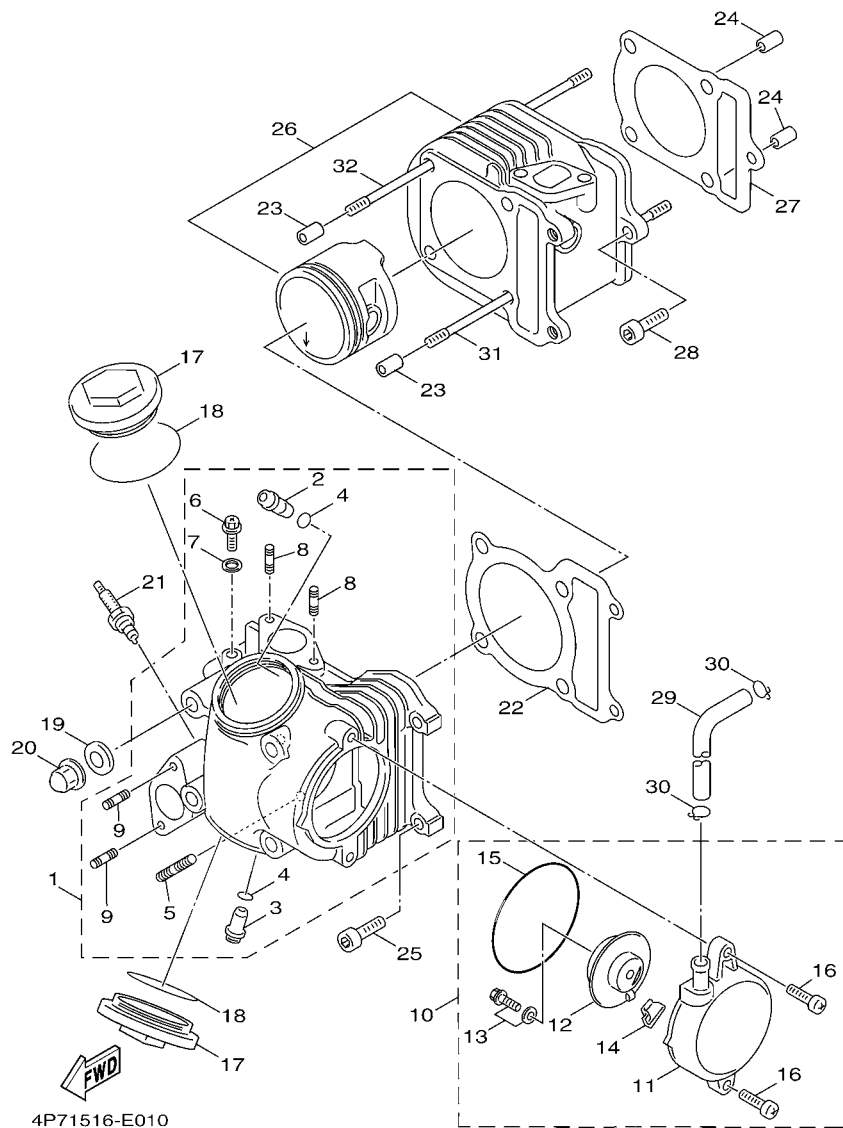
CYLINDER HEAD .....	1
CRANKSHAFT & PISTON .....	3
VALVE .....	4
AIR SHROUD & FAN .....	5
OIL PUMP .....	6
INTAKE .....	7
CARBURETOR .....	8
EXHAUST .....	10
CRANKCASE .....	12
STARTER .....	14
CLUTCH .....	15
TRANSMISSION .....	17

## CHASSIS

FRAME .....	18
FENDER .....	19
SIDE COVER .....	20
REAR ARM & SUSPENSION .....	22
FRONT FORK .....	23
FUEL TANK .....	25
SEAT .....	26
FRONT WHEEL .....	27
FRONT BRAKE CALIPER .....	28
REAR WHEEL .....	29
STEERING HANDLE & CABLE .....	30
FRONT MASTER CYLINDER .....	31
STAND & FOOTREST .....	32
LEG SHIELD .....	33
COWLING 1 .....	34
GENERATOR .....	35
STARTING MOTOR .....	36
FLASHER LIGHT .....	37
METER .....	38
HEADLIGHT .....	39
TAILLIGHT .....	40
HANDLE SWITCH & LEVER .....	41
ELECTRICAL 1 .....	42
ELECTRICAL 2 .....	43

## INDEX

NUMERICAL INDEX .....	44
-----------------------	----

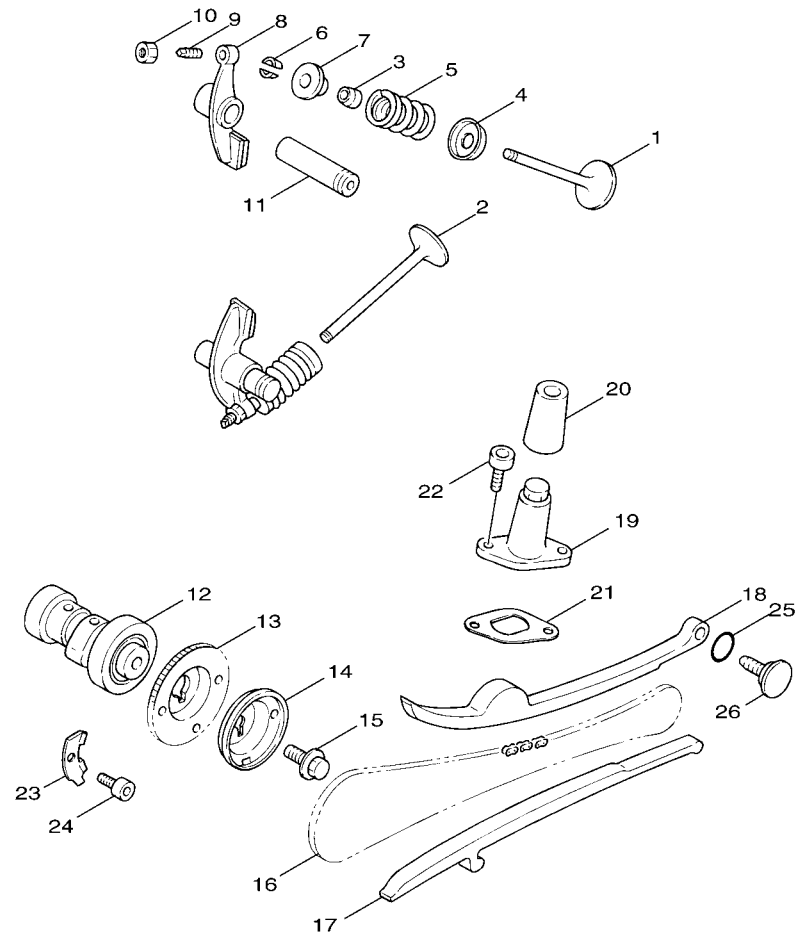


**FIG. 1 CYLINDER HEAD**

REF. NO.	PART NO.	DESCRIPTION	4P71				REMARKS
1	5WG-E1102-20	CYLINDER HEAD ASSY	1				
2	5LW-11133-10	.GUIDE, VALVE 1	1				
3	5LW-11134-10	.GUIDE, VALVE 2	1				
4	93210-09802	.O-RING	2				
5	90116-08019	.BOLT, STUD	2				
6	90153-06803	.SCREW, HEXAGON	1				
7	90430-06014	.GASKET	1				
8	95617-06625	.BOLT, STUD	2				
9	90113-06008	.BOLT, SET	2				
10	5WG-E1160-00	BREATHER ASSY	1				
11	5WG-E1185-00	.COVER, CYLINDER HEAD SIDE 1	1				
12	5WG-E1165-00	.PLATE, BREATHER	1				
13	97527-06512	.BOLT, WITH WASHER	1				
14	5WG-E1155-00	.SEAL, LABYRINTH	1				
15	93210-71462	.O-RING	1				
16	98507-06020	.SCREW, PAN HEAD	2				
17	4KL-E1186-00	COVER, CYLINDER HEAD SIDE 2	2				
18	93210-448C2	O-RING	2				
19	90201-08609	WASHER, PLATE	4				
20	90176-08805	NUT, CROWN	4				
21	94701-00353	PLUG, SPARK (NGK CR7E)	1				
22	5WG-E1181-00	GASKET, CYLINDER HEAD 1	1				
23	99530-10114	PIN, DOWEL	2				
24	99530-10114	PIN, DOWEL	2				
25	91317-06025	BOLT	2				
26	5WG-E1310-00	CYLINDER	1				
27	5WG-E1351-10	GASKET, CYLINDER	1				







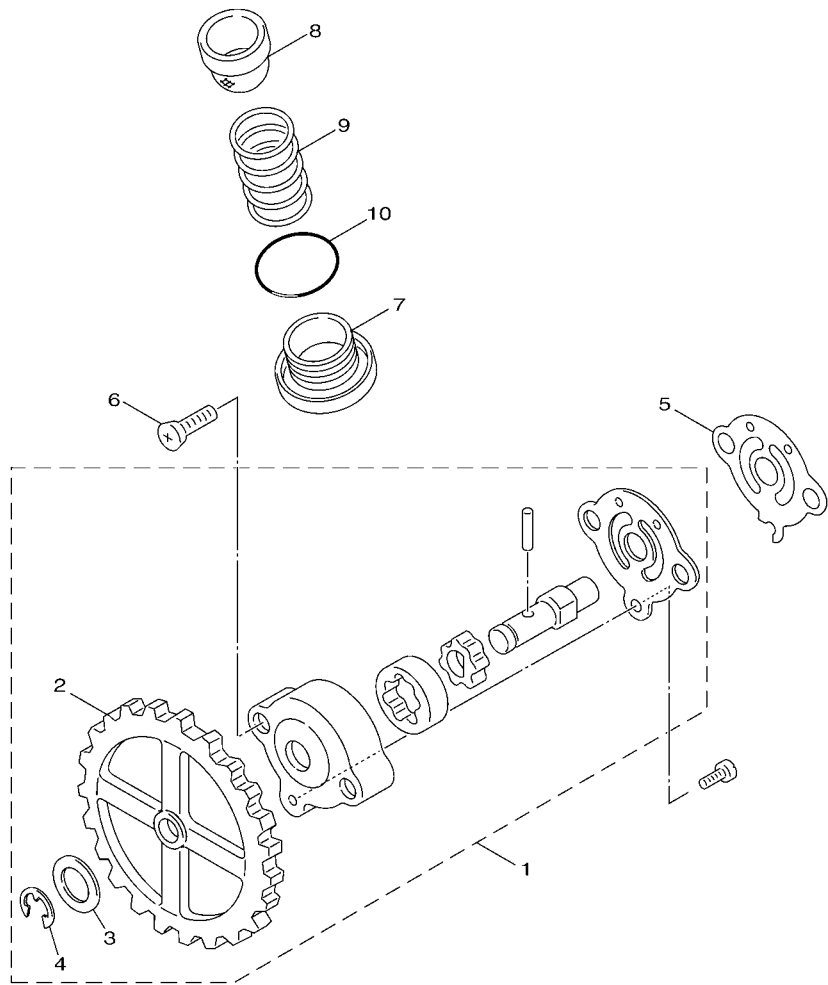
  
 5HK1414-0030

**FIG. 3 VALVE**

REF. NO.	PART NO.	DESCRIPTION	4P71				REMARKS
1	5WG-E2111-00	VALVE, INTAKE	1				
2	5WG-E2121-00	VALVE, EXHAUST	1				
3	5WG-E2119-00	SEAL, VALVE STEM	2				
4	5LW-12116-00	SEAT, VALVE SPRING	2				
5	5WG-E2113-00	SPRING, VALVE INNER	2				
6	5WG-E2118-00	COTTER, VALVE	4				
7	5WG-E2117-00	RETAINER, VALVE SPRING	2				
8	5WG-E2151-01	ARM, VALVE ROCKER	2				
9	22F-12159-00	SCREW, VALVE ADJUSTING	2				
10	90170-05302	NUT	2				
11	22F-12156-00	SHAFT, ROCKER 2	2				
12	5WG-E2170-00	CAMSHAFT ASSY 1	1				
13	5WG-E2176-00	SPROCKET, CAM CHAIN	1				
14	5WG-E1145-00	PLATE, BREATHER 2	1				
15	95817-08016	BOLT, FLANGE	1				
16	94568-90088	CHAIN	1				
17	4KL-E2231-00	GUIDE, STOPPER 1	1				
18	4KL-E2241-00	GUIDE, STOPPER 2	1				
19	4KL-E2210-00	TENSIONER ASSY, CAM CHAIN	1				
20	4KL-E2232-00	DAMPER	1				
21	5MH-E2213-10	GASKET, TENSIONER CASE	1				
22	91317-06016	BOLT	2				
23	5WG-E1111F-00	PLATE	1				
24	91317-06012	BOLT	1				
25	93210-15171	O-RING	1				
26	5MH-E2157-00	NUT, LOCK	1				

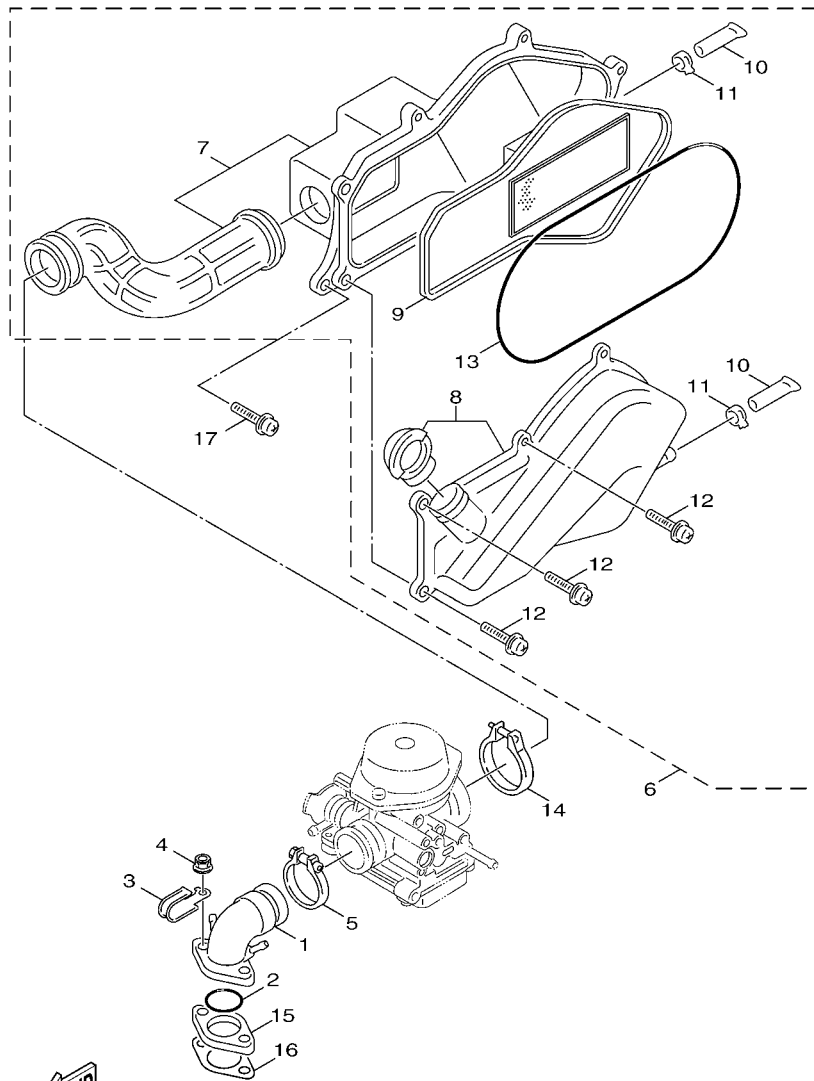


**FIG. 5 OIL PUMP**



**FWD**  
4P71516-E050

REF. NO.	PART NO.	DESCRIPTION	4P71				REMARKS
1	5MH-E3300-20	OIL PUMP ASSY	1				
2	5MH-E3325-00	.GEAR, PUMP DRIVEN	1				
3	90201-077F5	.WASHER, PLATE	1				
4	99001-05600	.CIRCLIP	1				
5	5MH-E3475-00	GASKET	1				
6	98707-06020	SCREW, FLAT HEAD	2				
7	4KL-E5351-00	PLUG, DRAIN	1				
8	4KL-E3411-00	STRAINER, OIL	1				
9	90501-16829	SPRING, COMPRESSION	1				
10	93210-34803	O-RING	1				



4P71516-E060

FIG. 6 INTAKE

REF. NO.	PART NO.	DESCRIPTION	4P71				REMARKS
1	5WG-E3585-00	MANIFOLD	1				
2	93210-25806	O-RING	1				
3	90462-10803	CLAMP	1				
4	95707-06500	NUT, FLANGE	2				
5	5MH-E3575-00	BAND	1				
6	5WG-E4410-20	AIR CLEANER ASSY.	1				
7	5WG-E4411-20	.CASE, AIR CLEANER 1	1				
8	5WG-E4412-20	.CAP, CLEANER CASE 1	1				
9	5WG-E4451-00	.ELEMENT, AIR CLEANER	1				
10	5WG-E443E-00	.PIPE, DRAIN	2				
11	90467-13813	.CLIP	2				
12	97607-06220	.SCREW,WITH WASHER	7				
13	5WG-E4476-00	.SEAL	2				
14	5WG-E3575-00	BAND	1				
15	5WG-E3595-00	JOINT	1				
16	5WG-E3556-10	GASKET, MANIFOLD	1				
17	97607-06225	SCREW,WITH WASHER	2				

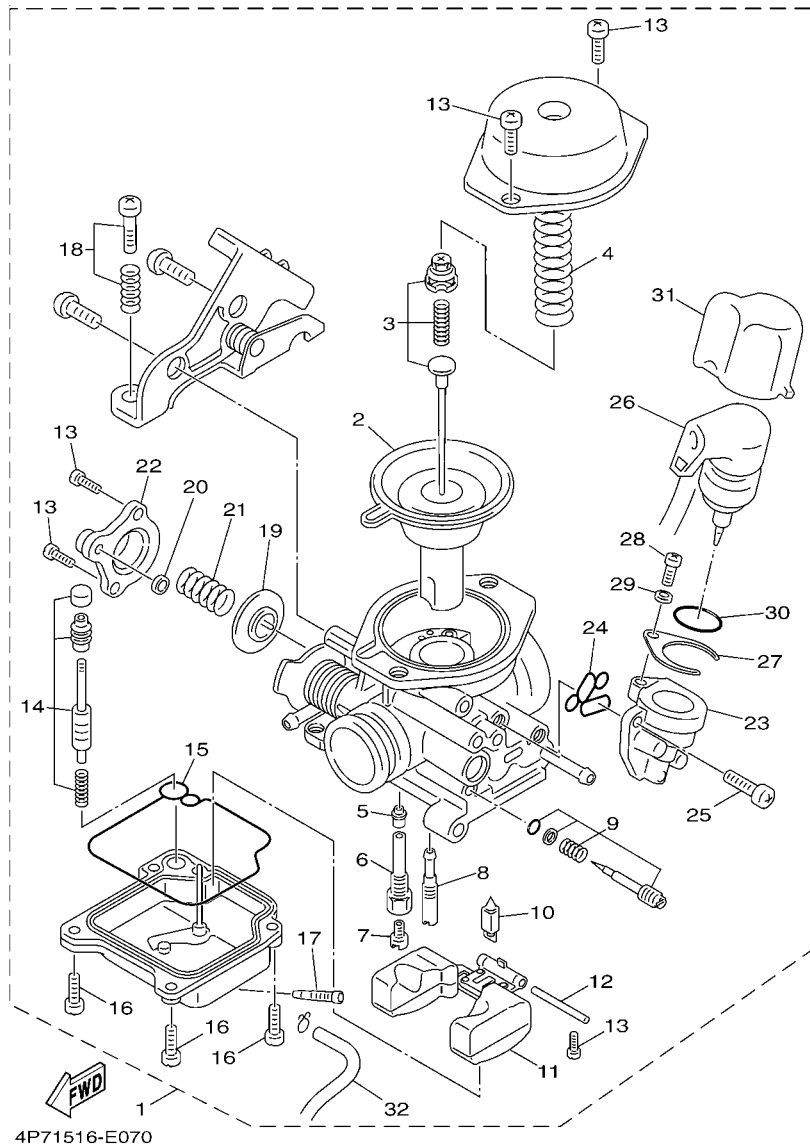
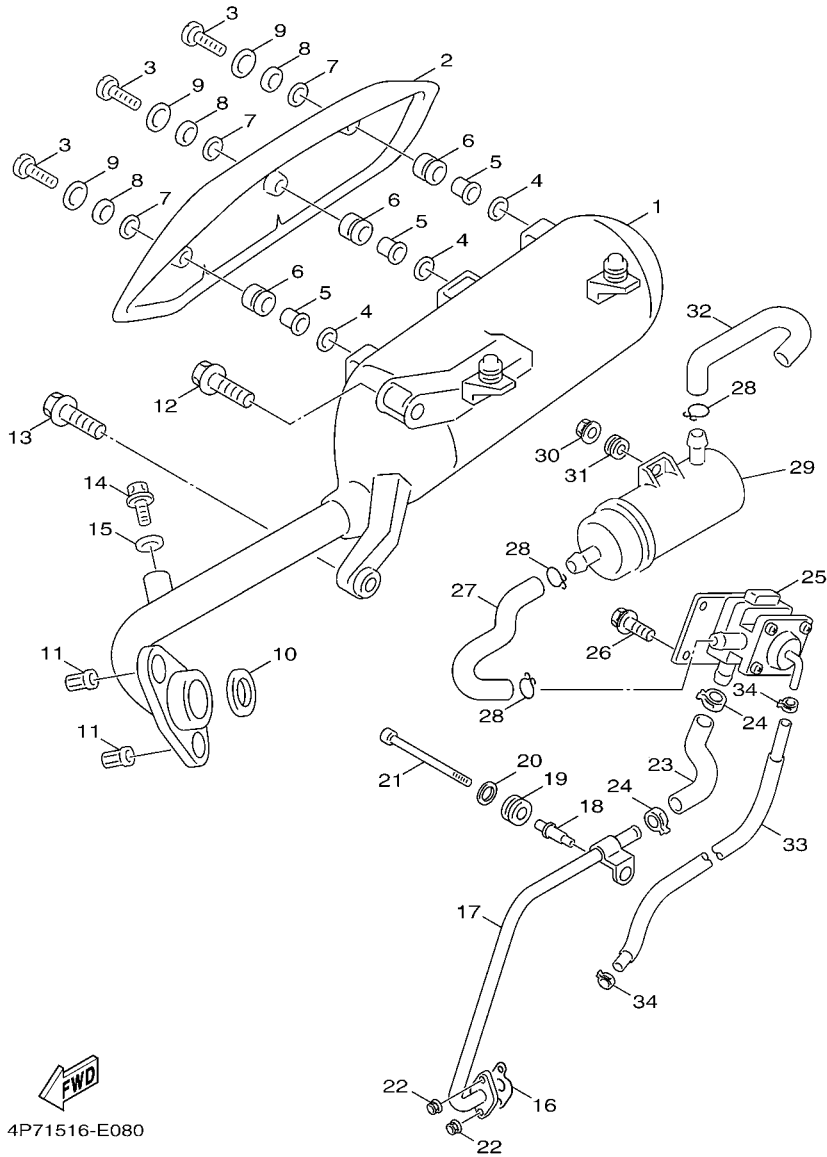


FIG. 7 CARBURETOR

REF. NO.	PART NO.	DESCRIPTION	4P71				REMARKS
1	5WG-E4901-00	CARBURETOR ASSY 1	1				
2	5WG-E4940-00	.DIAPHRAGM ASSY	1				
3	5WG-E490J-00	.NEEDLE SET	1				
4	5WG-E4933-00	.SPRING, DIAPHRAGM	1				
5	5WG-E4947-00	.JET, NEEDLE	1				
6	5WG-E414G-00	.HOLDER	1				
7	5WG-E4943-27	.JET, MAIN (#100)	1				
8	5WG-E4948-01	.JET (#35)	1				
9	5WG-E4105-00	.PILOT SCREW SET	1				
10	5WG-E4107-00	.NEEDLE VALVE SET	1				
11	5WG-E4985-00	.FLOAT	1				
12	5WG-E4548-00	.PIN, FLOAT ARM	1				
13	5WG-E4592-00	.SCREW	5				
14	5WG-E4504-00	.ROD SET	1				
15	1B6-E4984-00	.GASKET, FLOAT CHAMBER	1				
16	98502-04012	.SCREW, PAN HEAD	4				
17	3TJ-14191-40	.PLUG, DRAIN	1				
18	5WG-E490K-00	.STOP SCREW SET	1				
19	5WG-E490A-00	.DIAPHRAGM SET 1	1				
20	3TJ-14536-40	.GASKET	1				
21	5WG-E4275-00	.SPRING	1				
22	5WG-E4958-00	.COVER, DIAPHRAGM	1				
23	5WG-E4907-00	.BODY, STARTER	1				
24	5WG-E4147-00	.O-RING	1				
25	98517-05014	.SCREW, PAN HEAD	2				
26	5WG-E4370-00	.PLUNGER STARTER ASSY	1				
27	5WG-E4243-00	.PLATE	1				



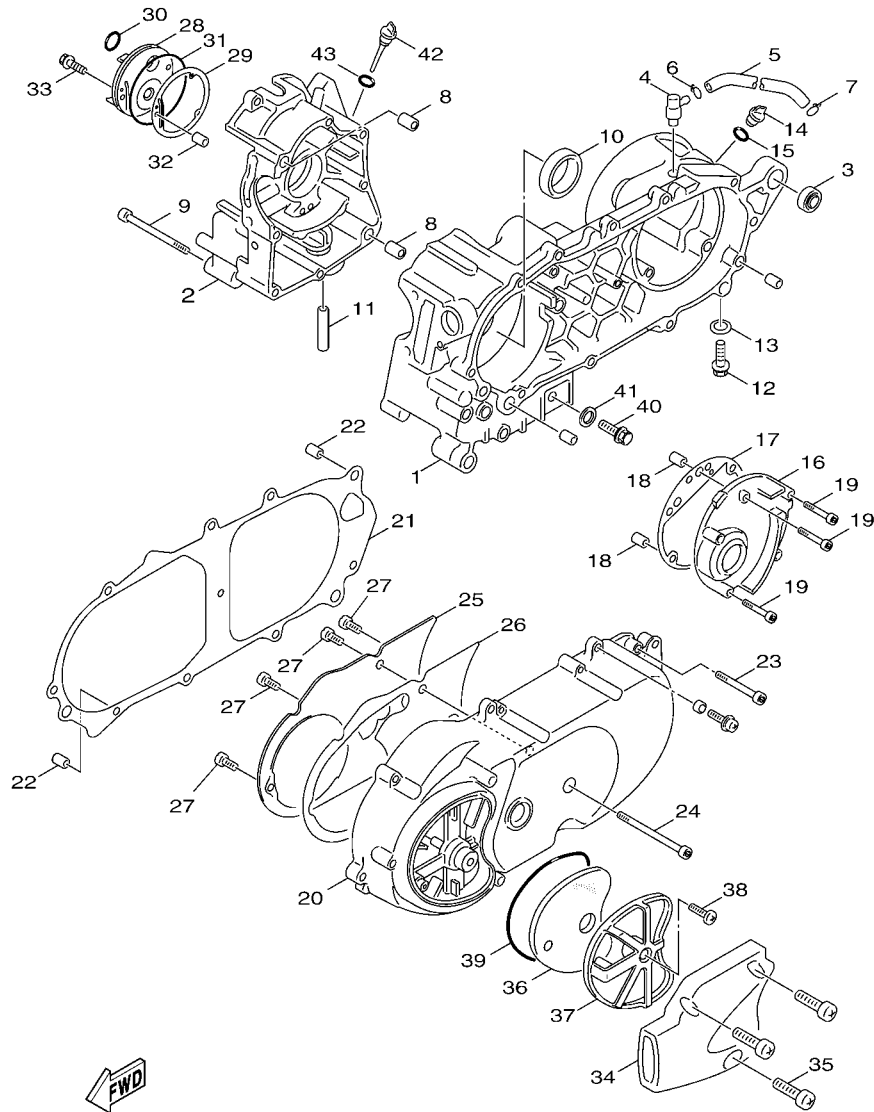


4P71516-E080

FIG. 8 EXHAUST

REF. NO.	PART NO.	DESCRIPTION	4P71				REMARKS
1	5WG-E4610-20	EXHAUST PIPE ASSY 1	1				
2	5WG-E4708-00	PROTECTOR ASSY	1				
3	98980-06020	SCREW, BIND	3				
4	5WB-E4766-10	WASHER, PROTECTOR	3				
5	5WY-E4779-00	COLLAR	3				
6	5WY-E4445-00	GROMMET	3				
7	5WY-E4759-00	WASHER	3				
8	5WY-E4617-00	WASHER	3				
9	90201-06814	WASHER, PLATE	3				
10	4KL-E4613-00	GASKET, EXHAUST PIPE	1				
11	90179-08804	NUT	2				
12	95817-08050	BOLT, FLANGE	1				
13	95817-08030	BOLT, FLANGE	1				
14	97080-06008	BOLT	1				
15	92990-06600	WASHER, PLATE	1				
16	5WG-E4815-00	GASKET	1				
17	5WG-E4871-00	PIPE 1	1				
18	5WG-E4876-00	PIPE 6	1				
19	90480-15801	GROMMET	1				
20	90201-06557	WASHER, PLATE	1				
21	91317-06050	BOLT	1				
22	95707-06500	NUT, FLANGE	2				
23	5WG-E4883-00	HOSE, BEND 3	1				
24	90468-08812	CLIP	2				
25	5WG-E4803-00	AIR INDUCTION SYSTEM ASSY	1				
26	95807-06012	BOLT, FLANGE	2				
27	5WG-E4884-00	HOSE, BEND 4	1				

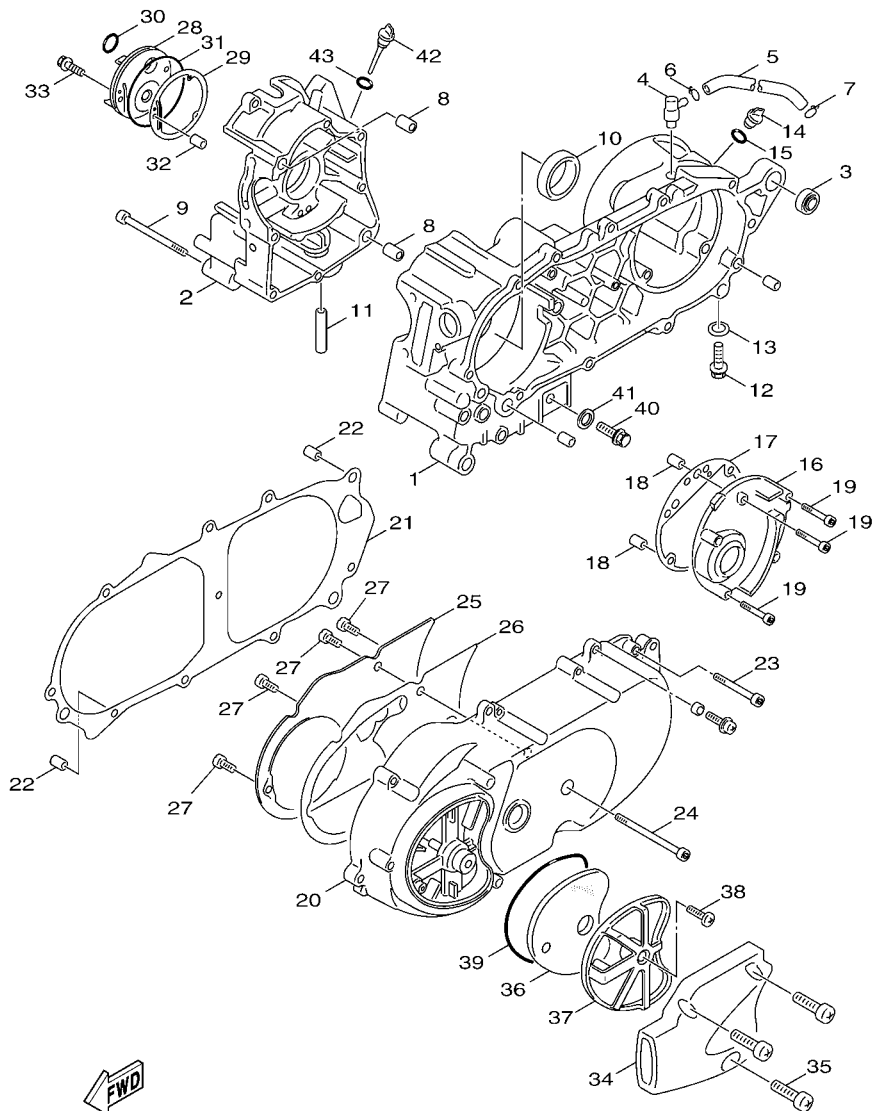




4P71516-E090

FIG. 9 CRANKCASE

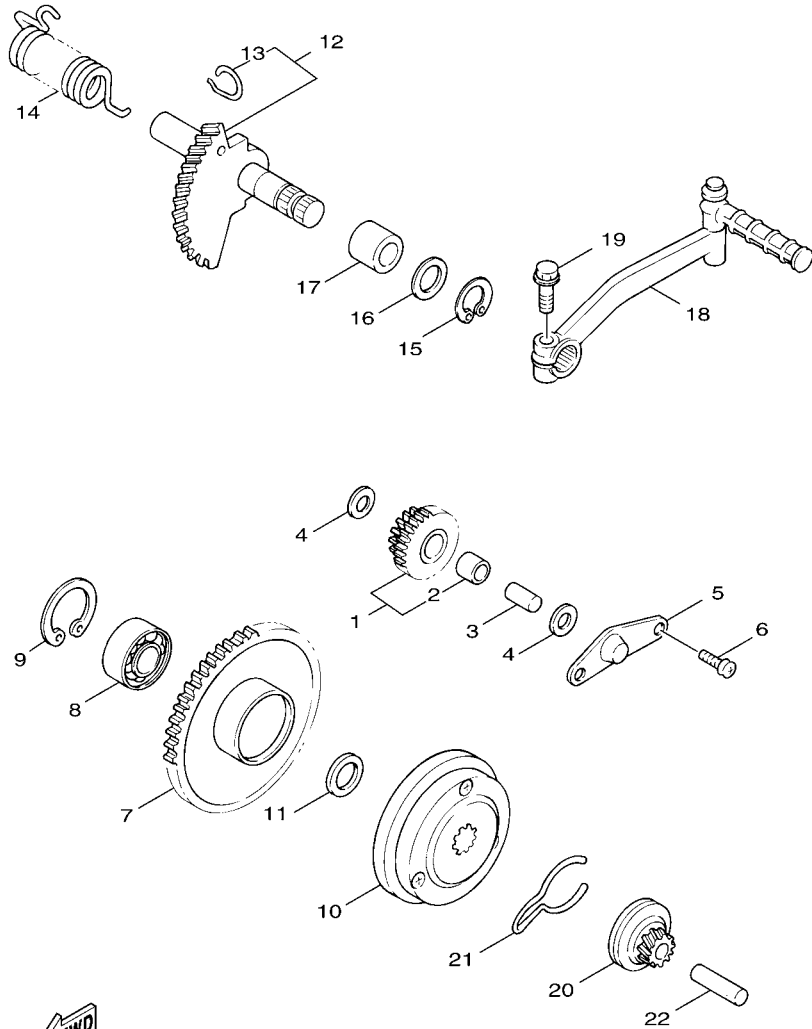
REF. NO.	PART NO.	DESCRIPTION	4P71				REMARKS
1	5WG-E5111-00	CRANKCASE 1	1				
2	5WG-E5121-00	CRANKCASE 2	1				
3	4KL-F2216-00	BUSH, REAR SHOCK ABSORBER	1				
4	5MH-E5371-00	BREATHER	1				
5	90446-13803	HOSE	1				
6	90467-12802	CLIP	1				
7	90467-11106	CLIP	1				
8	99530-12016	PIN, DOWEL	2				
9	91317-06060	BOLT	8				
10	93102-22843	OIL SEAL	1				
11	4KL-E3416-00	PIPE, OIL 1	1				
12	95817-08016	BOLT, FLANGE	1				
13	90430-08816	GASKET	1				
14	4KL-E5363-00	PLUG, OIL	1				
15	93210-14104	O-RING	1				
16	4KL-E5421-00	COVER, CRANKCASE 2	1				
17	4KL-E5461-10	GASKET, CRANKCASE COVER 2	1				
18	99530-10114	PIN, DOWEL	2				
19	91317-06040	BOLT	5				
20	5WG-E5411-10	COVER, CRANKCASE 1	1				
21	5WG-E5451-10	GASKET, CRANKCASE COVER 1	1				
22	99530-10114	PIN, DOWEL	2				
23	91317-06035	BOLT	9				
24	91317-06060	BOLT	1				
25	5WG-E5191-00	PLATE	1				
26	5WG-E5455-00	GASKET 1	1				
27	98907-06012	SCREW, BIND	4				



4P71516-E090

FIG. 9 CRANKCASE

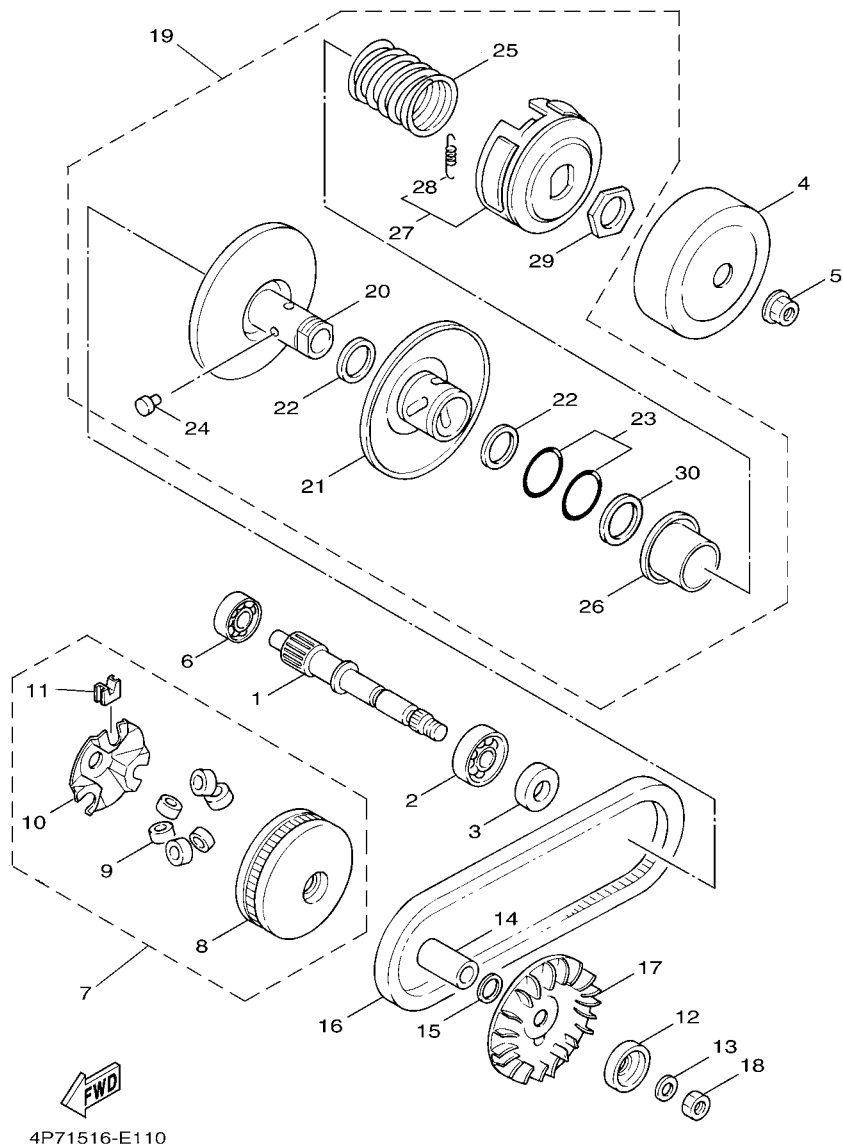
REF. NO.	PART NO.	DESCRIPTION	4P71				REMARKS
28	5WG-E5417-01	COVER, CAP	1				
29	5WG-E5453-10	GASKET	1				
30	93102-19851	OIL SEAL	1				
31	93211-028A9	O-RING	1				
32	93604-12831	PIN, DOWEL	1				
33	92017-06020	BOLT, BUTTON HEAD	3				
34	5WG-E5471-00	DUCT, AIR	1				
35	98907-06020	SCREW, BIND	3				
36	5WG-E5407-00	ELEMENT 1	1				
37	5WG-E5404-00	GUIDE, ELEMENT	1				
38	98907-06016	SCREW, BIND	1				
39	5WG-E5472-00	SEAL, AIR DUCT	1				
40	90340-12806	PLUG, STRAIGHT SCREW	1				
41	90201-12172	WASHER, PLATE	1				
42	5WG-E5362-00	PLUG, OIL LEVEL	1				
43	5WG-E3769-00	O-RING	1				



  
 3UH1414-1120

**FIG. 10 STARTER**

REF. NO.	PART NO.	DESCRIPTION	4P71				REMARKS
1	4KL-E5650-20	IDLE GEAR ASSY	1				
2	93317-110Y5	.BEARING	1				
3	5WG-15521-00	SHAFT 1	1				
4	90201-108A3	WASHER, PLATE	2				
5	5MH-E5532-00	PLATE, IDLE GEAR	1				
6	98507-06012	SCREW, PAN HEAD	2				
7	4KL-E5524-00	WHEEL, STARTER	1				
8	93306-003X8	BEARING	1				
9	99009-35700	CIRCLIP	1				
10	4KL-E5570-00	STARTER CLUTCH ASSY	1				
11	90201-163G6	WASHER, PLATE	1				
12	4KL-E5601-10	KICK SHAFT ASSY	1				
13	4KL-E5687-00	.CLIP	1				
14	90508-40838	SPRING, TORSION	1				
15	99009-17400	CIRCLIP	1				
16	90201-175F6	WASHER, PLATE	1				
17	90380-17234	BUSH, SOLID	1				
18	4KL-E5620-00	KICK CRANK ASSY	1				
19	91317-08030	BOLT	1				
20	4KL-E5630-00	KICK PINION ASSY	1				
21	5MH-E5673-00	CLIP	1				
22	4KL-E5659-00	SHAFT	1				



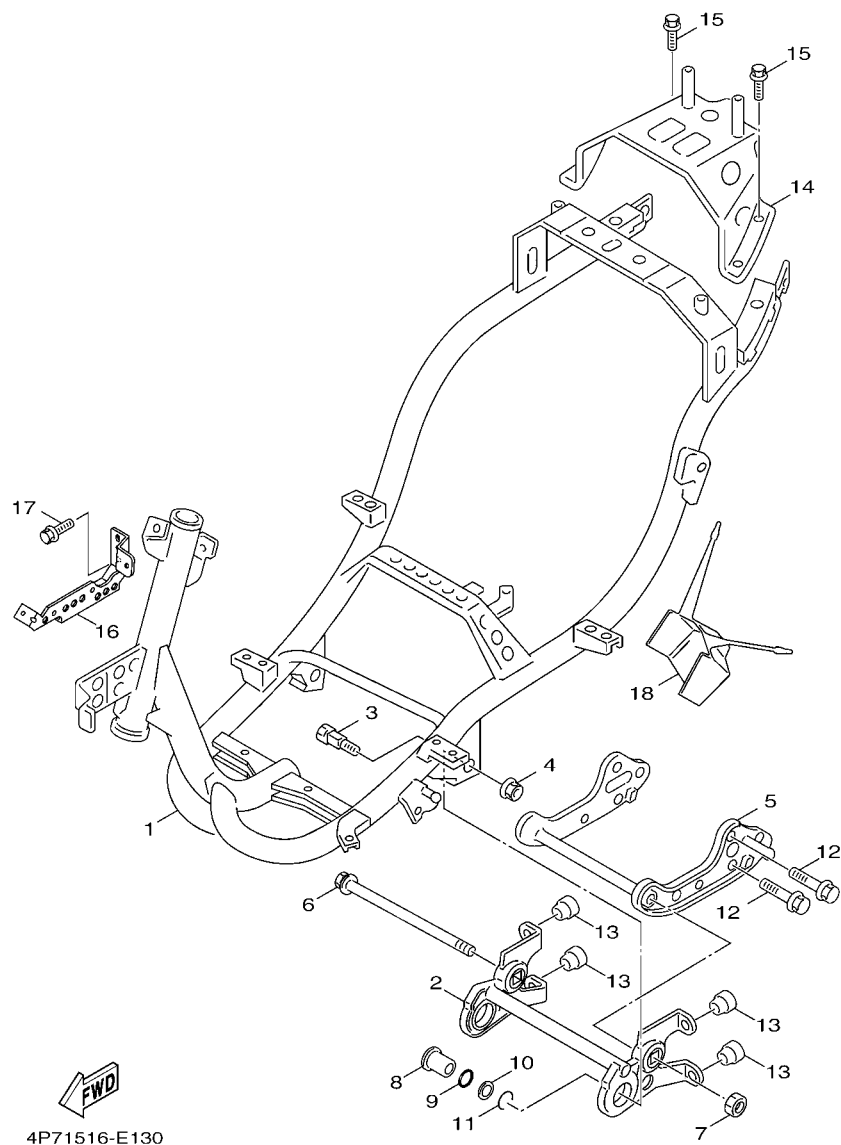
4P71516-E110

FIG. 11 CLUTCH

REF. NO.	PART NO.	DESCRIPTION	4P71				REMARKS
1	4KL-E6111-00	GEAR, PRIMARY DRIVE	1				
2	93306-204YN	BEARING	1				
3	93102-22805	OIL SEAL	1				
4	5WG-E6611-00	CLUTCH HOUSING COMP.	1				
5	90179-14427	NUT	1				
6	93306-203Y0	BEARING	1				
7	5WG-E7601-10	PRIMARY SHEAVE ASSY	1				
8	5WG-E7620-10	.PRIMARY SLIDING SHEAVE COMP.	1				
9	4KL-E7632-00	.WEIGHT	6				
10	5WG-E7623-00	.CAM	1				
11	5WG-E7653-10	.SLIDER	3				
12	4KL-E5657-00	CLUTCH, ONEWAY	1				
13	90208-12050	WASHER, CONICAL SPRING	1				
14	90387-168D2	COLLAR	1				
15	90201-163J6	WASHER, PLATE	1				
16	5MH-E7641-00	V-BELT	1				
17	5WG-E7611-00	SHEAVE, PRIMARY FIXED	1				
18	90170-12338	NUT	1				
19	5WG-E7602-02	SECONDARY SHEAVE ASSY	1				
20	5WG-E7660-00	.SECONDARY FIXED SHEAVE COMP.	1				
21	5WG-E7670-00	.SECONDARY SLIDING SHEAVE	1				
22	4KL-E7465-01	.SEAL, FELT	2				
23	5WG-E7465-10	.SEAL, FELT	2				
24	5WG-E7664-00	.PIN, GUIDE	3				
25	4KL-E7683-00	.SPRING, SECONDARY	1				
26	5WG-E7684-00	.SEAT, SECONDARY SPRING	1				
27	5WG-E6620-00	.CLUTCH CARRIER ASSY	1				

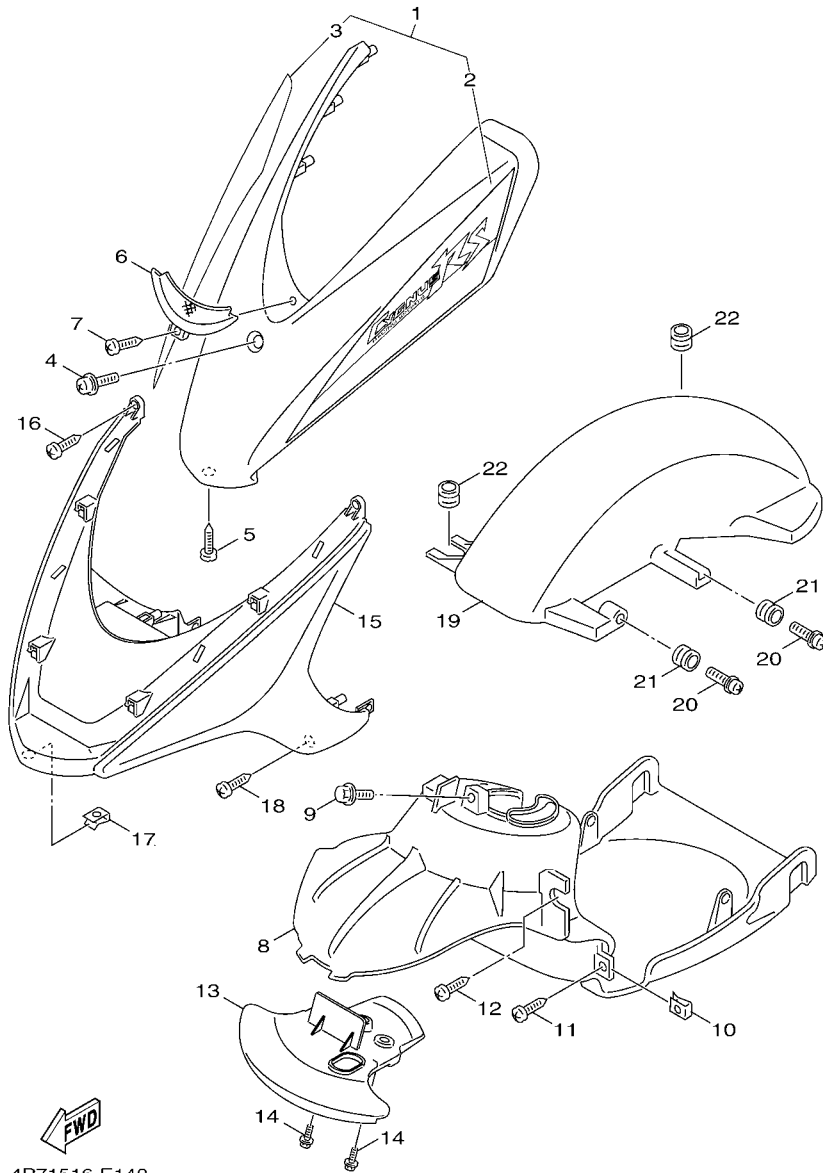






**FIG. 13 FRAME**

REF. NO.	PART NO.	DESCRIPTION	4P71				REMARKS
1	5WG-F1110-01	FRAME COMP.	1				
2	5WG-F1420-00	ENGINE BRACKET COMP. 2	1				
3	5WG-F1481-00	BOLT, ENGINE MOUNTING 1	2				
4	95607-10200	NUT, U FLANGE	2				
5	4P7-F1410-00	ENGINE BRACKET COMP.	1				
6	5WG-F1482-00	BOLT, ENGINE MOUNTING 2	1				
7	95607-10200	NUT, U FLANGE	1				
8	5WG-E5317-00	SPACER, ENGINE MOUNT	2				
9	93210-15639	O-RING	4				
10	90201-17485	WASHER, PLATE	2				
11	99009-17400	CIRCLIP	2				
12	9581N-10030	BOLT, FLANGE	2				
13	5WG-F118W-00	STOPPER	4				
14	5WG-F116F-00	STAY, REAR	1				
15	95807-06014	BOLT, FLANGE	4				
16	4P7-F1274-00	BRACKET, C.D.I. UNIT	1				
17	95807-06012	BOLT, FLANGE	2				
18	5WG-F1521-00	FLAP, FRONT FENDER	1				



4P71516-E140

FIG. 14 FENDER

REF. NO.	PART NO.	DESCRIPTION	4P71				REMARKS
1	4P7-X2150-20-P1	FRONT FENDER ASSY	1				UR S3
	4P7-X2150-20-FE	FRONT FENDER ASSY	1				UR MRE
	4P7-X2150-20-P5	FRONT FENDER ASSY	1				UR DPBMC
2	4P7-F1571-00	.GRAPHIC, FRONT FENDER 1	1				UR FOR S3
	4P7-F1571-10	.GRAPHIC, FRONT FENDER 1	1				UR FOR MRE,DPBMC
3	5WG-F1572-00	.GRAPHIC, FRONT FENDER 2	1				UR FOR S3
	5WG-F1572-10	.GRAPHIC, FRONT FENDER 2	1				UR FOR MRE,DPBMC
4	90159-06812	SCREW, WITH WASHER	1				
5	97707-50012	SCREW, TRUSS HEAD TAPPING	1				
6	5WG-F1523-00	PLATE 1	1				
7	97707-50016	SCREW, TRUSS HEAD TAPPING	1				
8	5WG-F1552-01	FENDER, INNER	1				
9	90119-06018	BOLT, WITH WASHER	1				
10	90183-05807	NUT, SPRING	2				
11	97707-50012	SCREW, TRUSS HEAD TAPPING	2				
12	97707-50016	SCREW, TRUSS HEAD TAPPING	2				
13	5WG-F1553-00	FENDER, INNER 2	1				
14	90119-06060	BOLT, WITH WASHER	2				
15	5WG-F1519-00-P2	MOLE, FENDER	1				SMX
16	97707-50016	SCREW, TRUSS HEAD TAPPING	2				
17	90183-05807	NUT, SPRING	1				
18	97707-50012	SCREW, TRUSS HEAD TAPPING	2				
19	5WG-F1611-00	FENDER, REAR	1				
20	90159-06033	SCREW, WITH WASHER	2				
21	90387-063F7	COLLAR	2				
22	90480-12803	GROMMET	2				

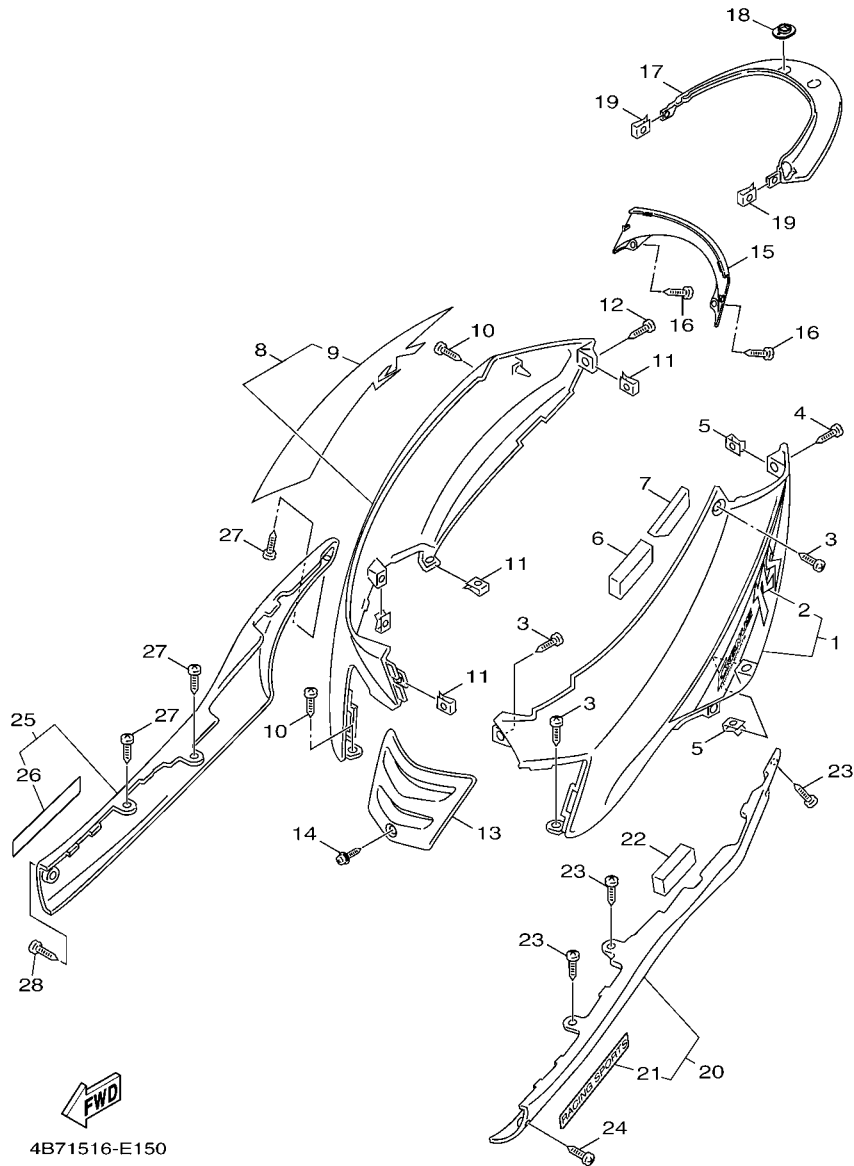
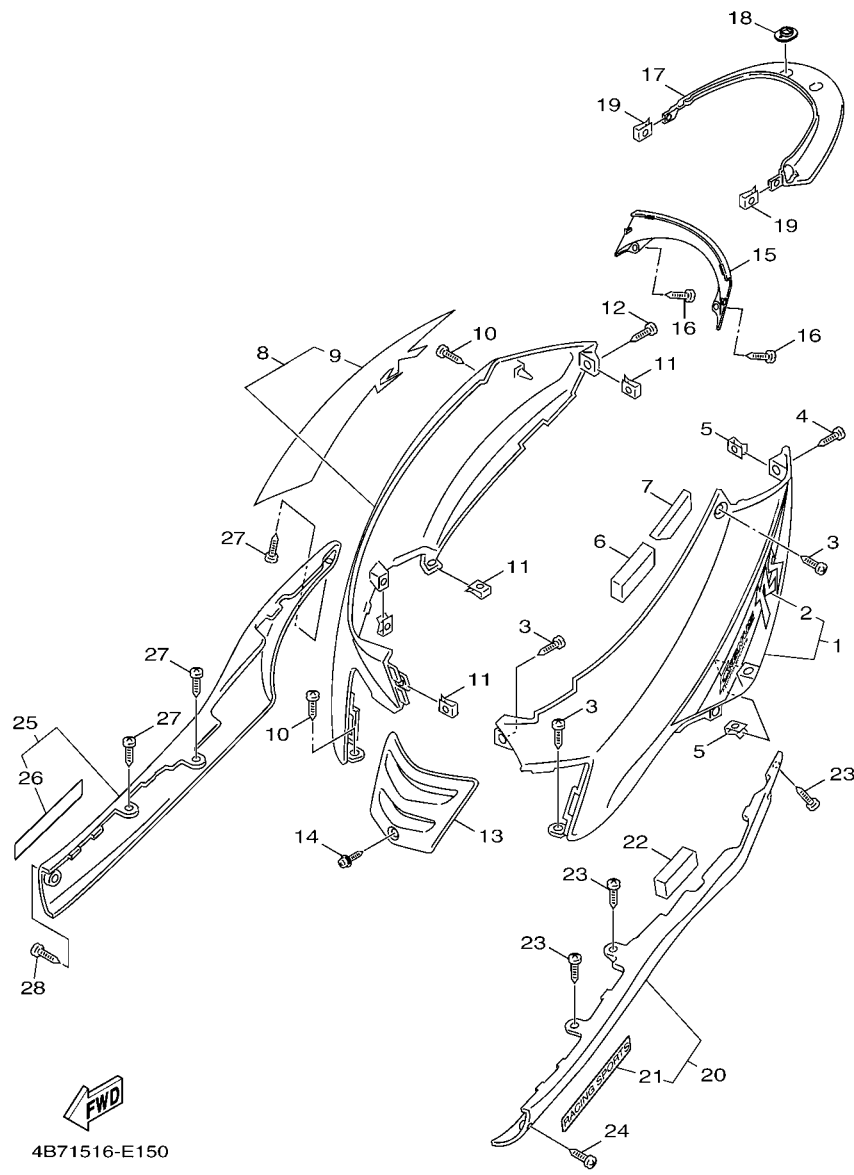


FIG. 15 SIDE COVER

REF. NO.	PART NO.	DESCRIPTION	4P71			REMARKS
1	4P7-X2171-01-P3	COVER, SIDE 1	1			UR S3
	4P7-X2171-01-FE	COVER, SIDE 1	1			UR MRE
	4P7-X2171-01-P6	COVER, SIDE 1	1			UR DPBMC
2	4P7-F173E-00	.GRAPHIC 1	1			UR FOR S3
	4P7-F173E-10	.GRAPHIC 1	1			UR FOR MRE,DPBMC
3	97707-50012	SCREW, TRUSS HEAD TAPPING	3			
4	97707-50016	SCREW, TRUSS HEAD TAPPING	1			
5	90183-05807	NUT, SPRING	2			
6	5WG-F1717-00	DAMPER	1			
7	5WG-F1746-00	DAMPER	1			
8	4P7-X2172-01-P3	COVER, SIDE 2	1			UR S3
	4P7-X2172-01-FE	COVER, SIDE 2	1			UR MRE
	4P7-X2172-01-P6	COVER, SIDE 2	1			UR DPBMC
9	4P7-F173F-00	.GRAPHIC 2	1			UR FOR S3
	4P7-F173F-10	.GRAPHIC 2	1			UR FOR MRE,DPBMC
10	97707-50012	SCREW, TRUSS HEAD TAPPING	2			
11	90183-05807	NUT, SPRING	3			
12	97707-50016	SCREW, TRUSS HEAD TAPPING	1			
13	5WG-F1731-00-P1	COVER, SIDE 3	1			UR S3
	5WG-F1731-00-FE	COVER, SIDE 3	1			UR MRE
	5WG-F1731-00-P5	COVER, SIDE 3	1			UR DPBMC
14	97707-50012	SCREW, TRUSS HEAD TAPPING	1			
15	5WG-F1741-00-P1	COVER, SIDE 4	1			UR S3
	5WG-F1741-00-FE	COVER, SIDE 4	1			UR MRE
	5WG-F1741-00-P5	COVER, SIDE 4	1			UR DPBMC
16	97780-50512	SCREW, TAPPING	2			
17	5WG-F171E-00-P1	COVER, SIDE 5	1			UR S3



4B71516-E150

FIG. 15 SIDE COVER

REF. NO.	PART NO.	DESCRIPTION	4P71				REMARKS
17	5WG-F171E-00-FE	COVER, SIDE 5	1				UR MRE
	5WG-F171E-00-P5	COVER, SIDE 5	1				UR DPBMC
18	5WG-F1773-00	GROMMET	2				
19	90183-05807	NUT, SPRING	2				
20	5WG-X217L-10-P2	MOLE, SIDE COVER 1	1				SMX
21	5WG-F174G-00	.GRAPHIC 3	1				
22	5MH-F1717-00	DAMPER	1				
23	97707-50012	SCREW, TRUSS HEAD TAPPING	3				
24	97707-50016	SCREW, TRUSS HEAD TAPPING	1				
25	5WG-X217M-10-P2	MOLE, SIDE COVER 2	1				SMX
26	5WG-F174G-00	.GRAPHIC 3	1				
27	97707-50012	SCREW, TRUSS HEAD TAPPING	3				
28	97707-50016	SCREW, TRUSS HEAD TAPPING	1				
-----							
-----							
-----							
-----							



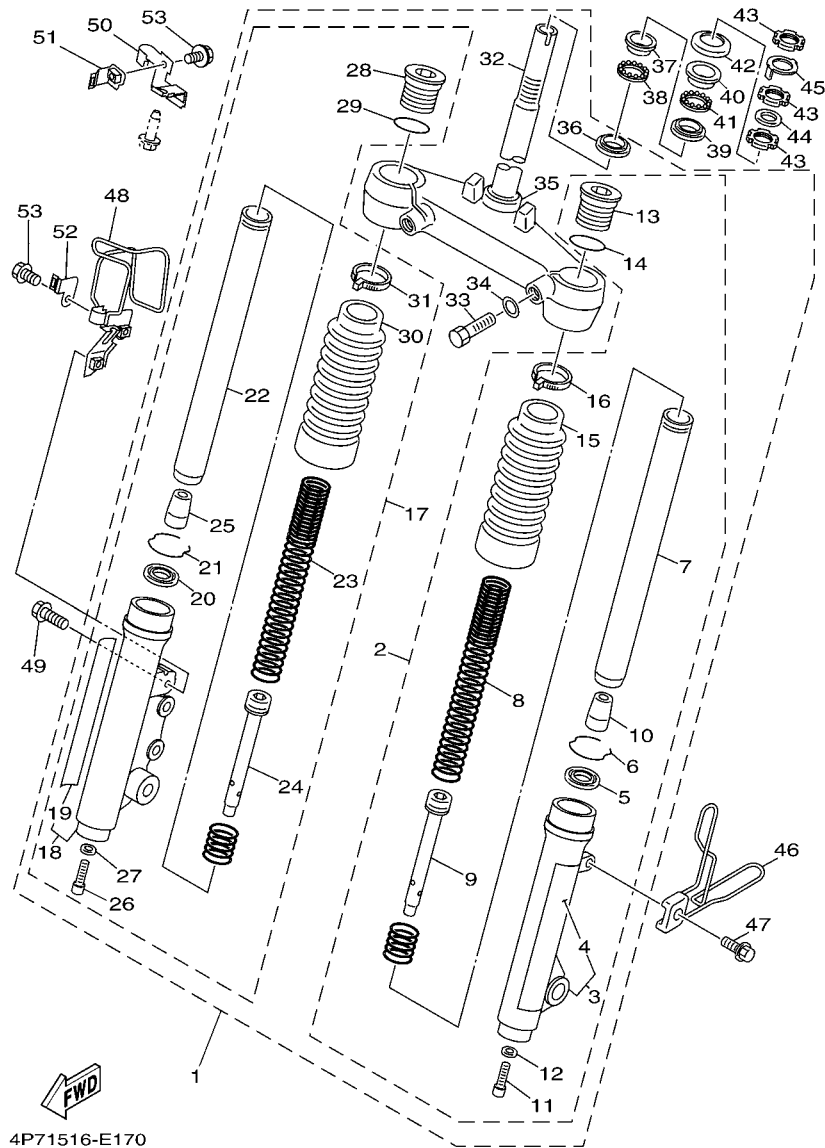


FIG. 17 FRONT FORK

REF. NO.	PART NO.	DESCRIPTION	4P71				REMARKS
1	4P7-X2310-00	FRONT FORK ASSY	1				
2	4P7-X3102-00	.FRONT FORK ASSY (L.H)	1				
3	4P7-X3106-00	.TUBE, OUTER (LEFT)	1				
4	5WG-F339E-00	..GRAPHIC 1	1				
5	4GU-F3145-00	.OIL SEAL	1				
6	5AP-F3153-00	.RING, SNAP	1				
7	5WG-F3110-00	.INNER TUBE COMP.1	1				
8	5WG-F3141-00	.SPRING, FRONT FORK	1				
9	5WG-F3170-00	.CYLINDER COMP., FRONT FORK	1				
10	5AP-F3166-00	.SPACER, OIL LOCK	1				
11	5LK-F3356-00	.BOLT 2	1				
12	4TU-F3479-00	.GASKET	1				
13	4KL-F3111-00	.BOLT, CAP	1				
14	5AP-F3147-00	.O-RING	1				
15	4KL-F3191-10	.BOOT	1				
16	4KL-F3192-10	.BAND	1				
17	4P7-X3103-00	.FRONT FORK ASSY (R.H)	1				
18	4P7-X3107-10	.TUBE, OUTER (RIGHT)	1				
19	5WG-F339E-00	..GRAPHIC 1	1				
20	4GU-F3145-00	.OIL SEAL	1				
21	5AP-F3153-00	.RING, SNAP	1				
22	5WG-F3110-00	.INNER TUBE COMP.1	1				
23	5WG-F3141-00	.SPRING, FRONT FORK	1				
24	5WG-F3170-00	.CYLINDER COMP., FRONT FORK	1				
25	5AP-F3166-00	.SPACER, OIL LOCK	1				
26	5LK-F3356-00	.BOLT 2	1				
27	4TU-F3479-00	.GASKET	1				

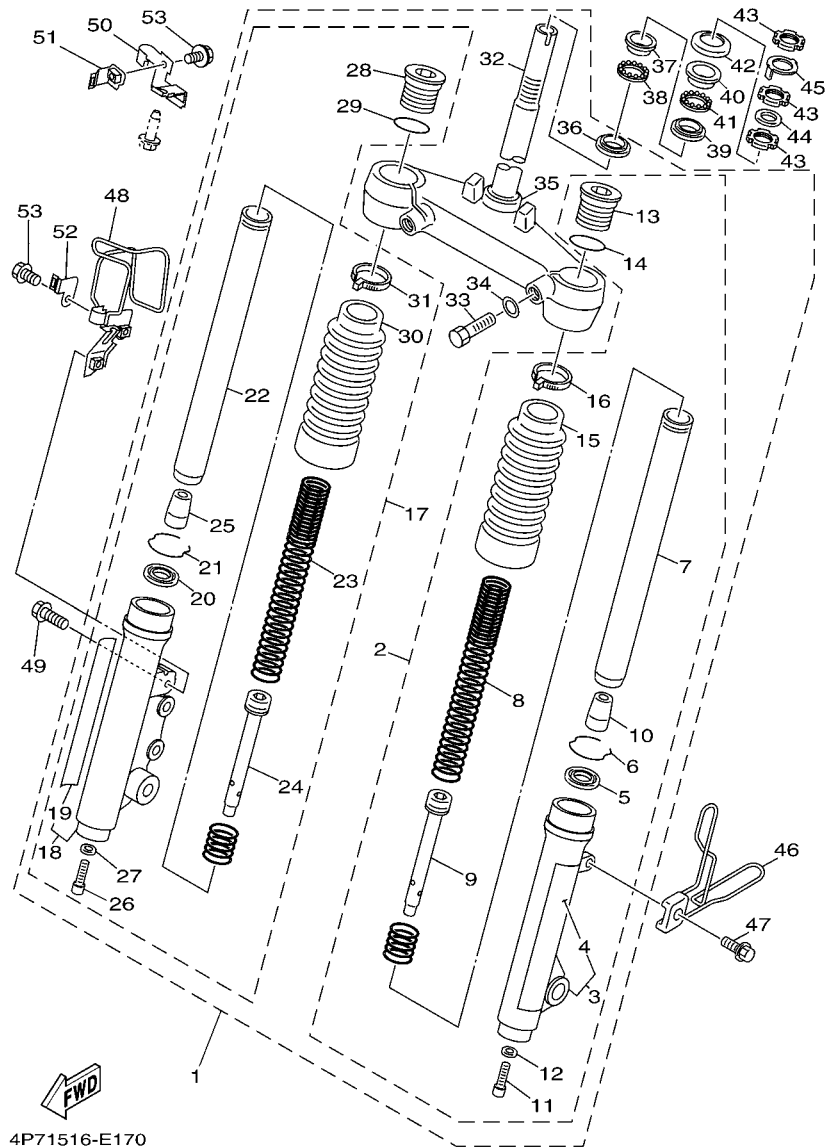


FIG. 17 FRONT FORK

REF. NO.	PART NO.	DESCRIPTION	4P71				REMARKS
28	4KL-F3111-00	.BOLT, CAP	1				
29	5AP-F3147-00	.O-RING	1				
30	4KL-F3191-10	.BOOT	1				
31	4KL-F3192-10	.BAND	1				
32	4P7-F3340-00	.UNDER BRACKET COMP.	1				
33	4RT-F3346-00	.BOLT 1	2				
34	94101-12302	.WASHER, SPRING	2				
35	4TU-F3144-00	.SEAL, DUST	1				
36	4TU-F3411-00	.RACE, BALL 1	1				
37	4KL-F3412-20	RACE, BALL 2	1				
38	5WG-F341E-00	RETAINER, BALL BEARING	1				
39	4KL-F3412-30	RACE, BALL 2	1				
40	4KL-F3411-10	RACE, BALL 1	1				
41	5WG-F341E-10	RETAINER, BALL BEARING	1				
42	5MH-F3416-00	COVER, BALL RACE 2	1				
43	90179-25615	NUT	3				
44	90202-26142	WASHER, PLATE	1				
45	5WG-F3418-00	WASHER, SPECIAL	1				
46	5WG-F3317-00	HOLDER, CABLE	1				
47	95807-06010	BOLT, FLANGE	1				
48	5WG-F5875-01	HOLDER, BRAKE HOSE 1	1				
49	95807-06020	BOLT, FLANGE	1				
50	5WG-F5887-00	HOLDER, BRAKE HOSE	1				
51	5WG-F5886-00	HOLDER, BRAKE HOSE	1				
52	5WG-F5876-00	HOLDER, BRAKE HOSE 2	1				
53	95807-06012	BOLT, FLANGE	2				

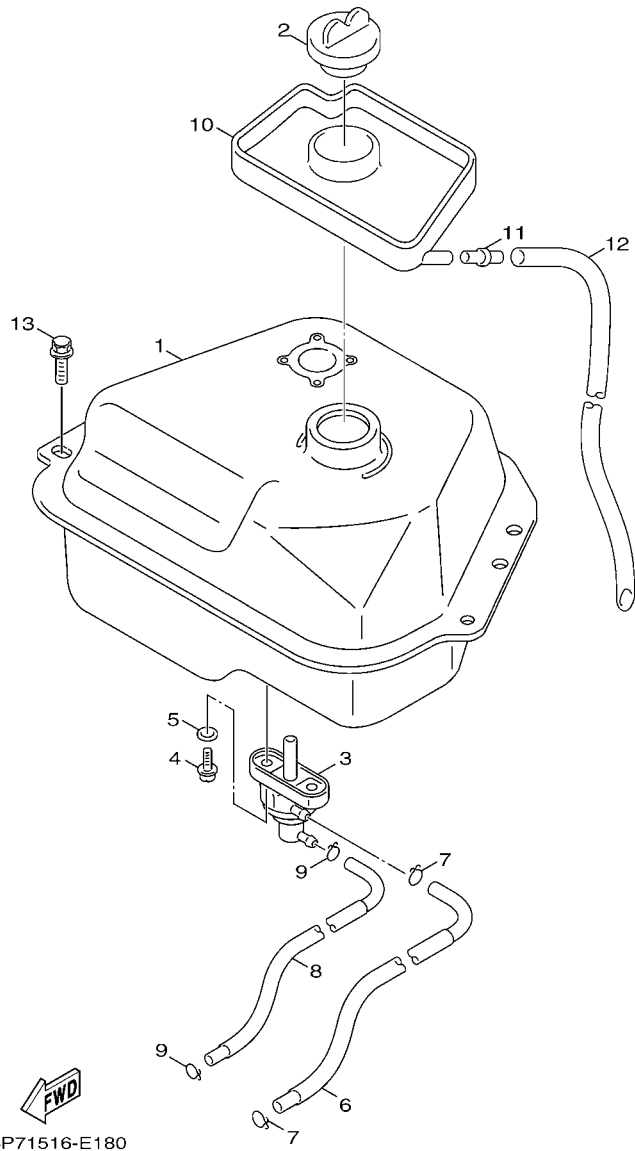
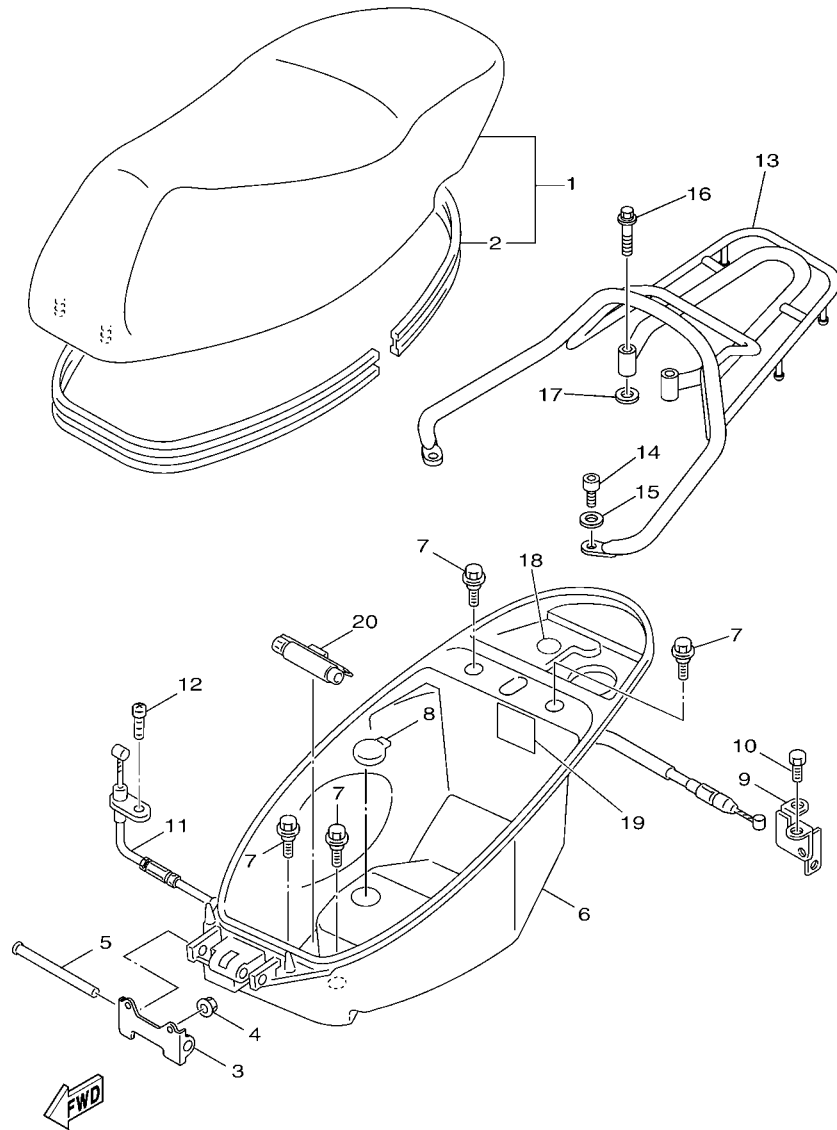


FIG. 18 FUEL TANK

REF. NO.	PART NO.	DESCRIPTION	4P71				REMARKS
1	5WG-F4110-10	FUEL TANK COMP.	1				
2	5MH-F4610-10	CAP ASSY	1				
3	5WG-F4500-00	FUEL COCK ASSY 1	1				
4	90149-06011	SCREW	2				
5	90202-05193	WASHER, PLATE	2				
6	5WG-F4311-00	PIPE, FUEL 1	1				
7	90467-09006	CLIP	2				
8	5WG-F4312-00	PIPE 2	1				
9	90467-08003	CLIP	2				
10	5WG-F414A-00	COVER, FILLER	1				
11	5WY-F1753-00	BOSS, CONNECTOR	1				
12	91A11-07048	TUBE, FLEXUBLE	1				
13	95807-06014	BOLT, FLANGE	2				

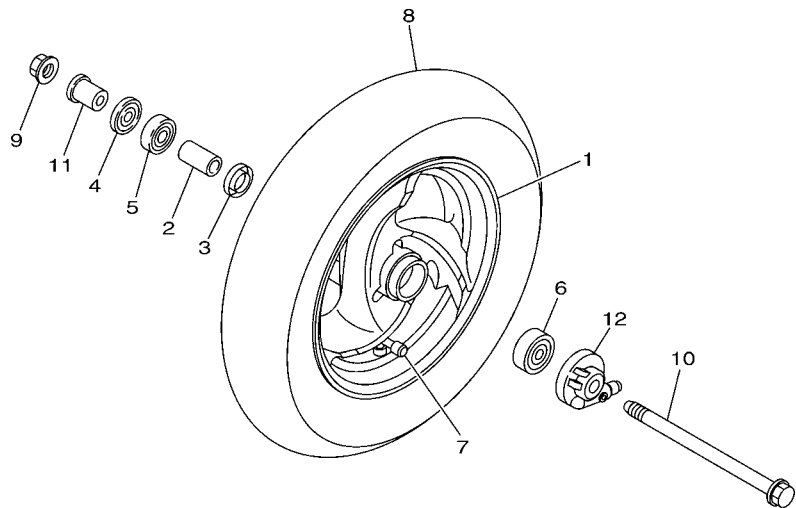


4P71516-E190

FIG. 19 SEAT

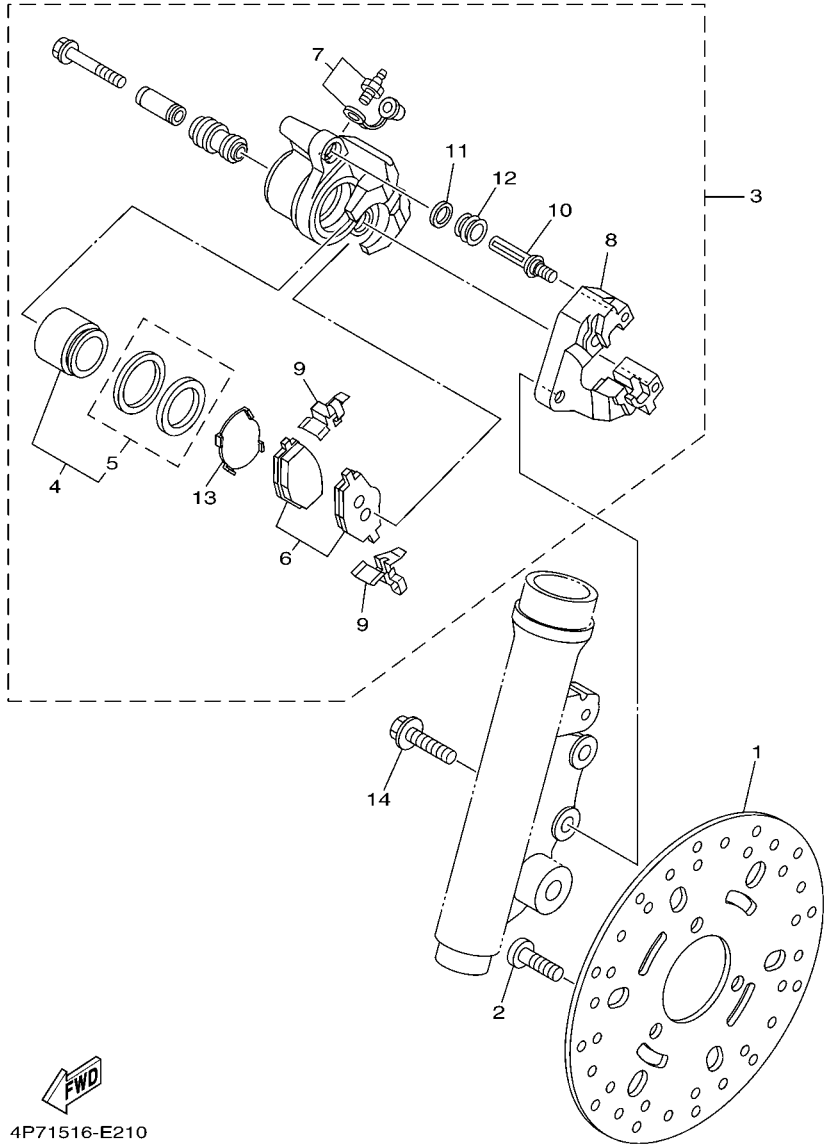
REF. NO.	PART NO.	DESCRIPTION	4P71				REMARKS
1	5WG-F4730-10	DOUBLE SEAT ASSY	1				
2	5WG-F475M-00	.SEAL	1				
3	5WG-F4726-00	HINGE, SEAT	1				
4	95707-06500	NUT, FLANGE	2				
5	90241-10015	PIN	1				
6	4P7-F473R-00	BOX 1	1				
7	90109-06822	BOLT	4				
8	5WY-F4742-00	GROMMET	1				
9	5WY-F4780-00	SEAT LOCK ASSY	1				
10	95807-06010	BOLT, FLANGE	2				
11	5WG-F478E-00	CABLE, SEAT LOCK	1				
12	98507-05012	SCREW, PAN HEAD	1				
13	4P7-F4842-00	CARRIER, REAR	1				
14	91317-08016	BOLT	2				
15	90201-086P8	WASHER, PLATE	2				
16	90119-08839	BOLT, WITH WASHER	2				
17	90201-086P8	WASHER, PLATE	2				
18	4P7-2118N-01	LABEL	1				
19	3ME-2415E-01	LABEL, CAUTION	1				
20	4KL-F8100-00	TOOL KIT	1				

**FIG. 20 FRONT WHEEL**



REF. NO.	PART NO.	DESCRIPTION	4P71				REMARKS
1	5WG-F5168-00-35	CAST WHEEL, FRONT	1				SL
2	90387-12825	COLLAR	1				
3	5WG-F5315-00	FLANGE, SPACER	1				
4	93102-17853	OIL SEAL	1				
5	93306-301XF	BEARING	1				
6	93306-201X5	BEARING	1				
7	93900-00809	VALVE, RIM	1				
8	94110-10807	TIRE (100/90-10 56J TL C922)	1				CHENG SHIN
9	95607-12200	NUT, SELF-LOCKING	1				
10	5WG-F5181-20	AXLE, WHEEL	1				
11	90387-125J1	COLLAR	1				
12	4KL-F5190-00	GEAR UNIT ASSY	1				

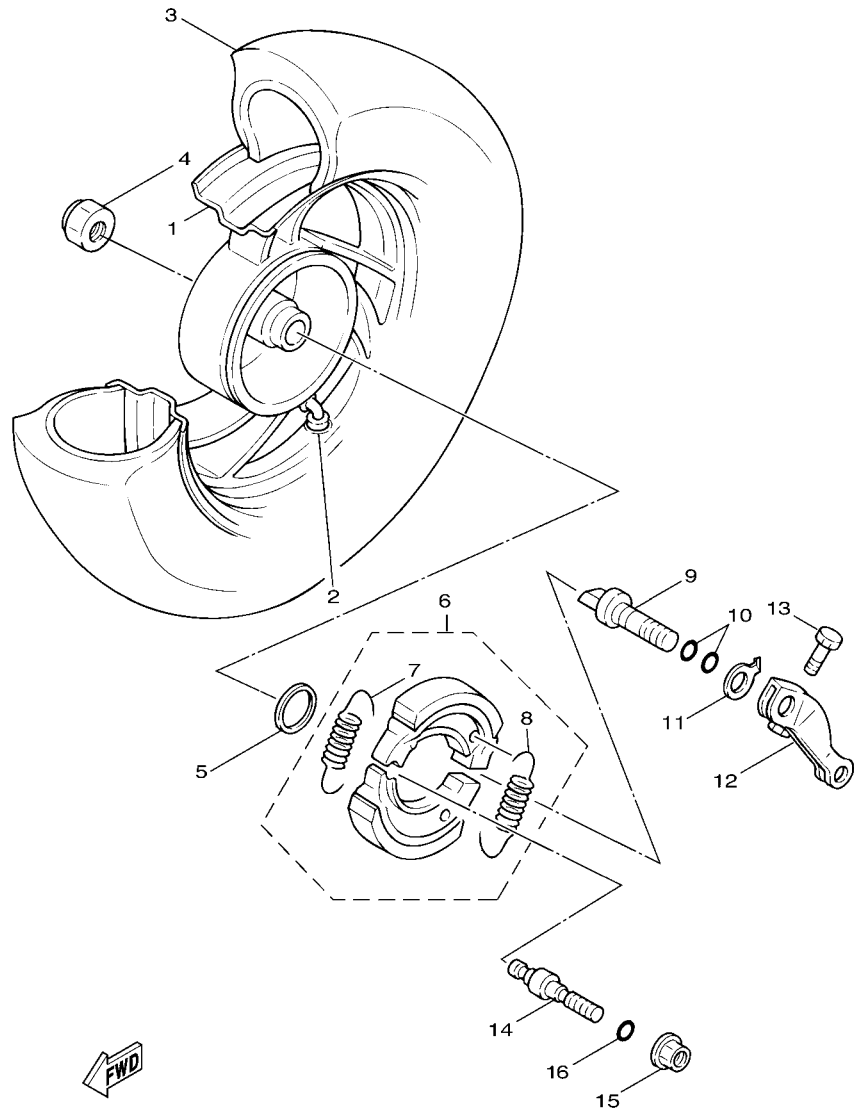
  
4P71516-E200



  
4P71516-E210

**FIG. 21 FRONT BRAKE CALIPER**

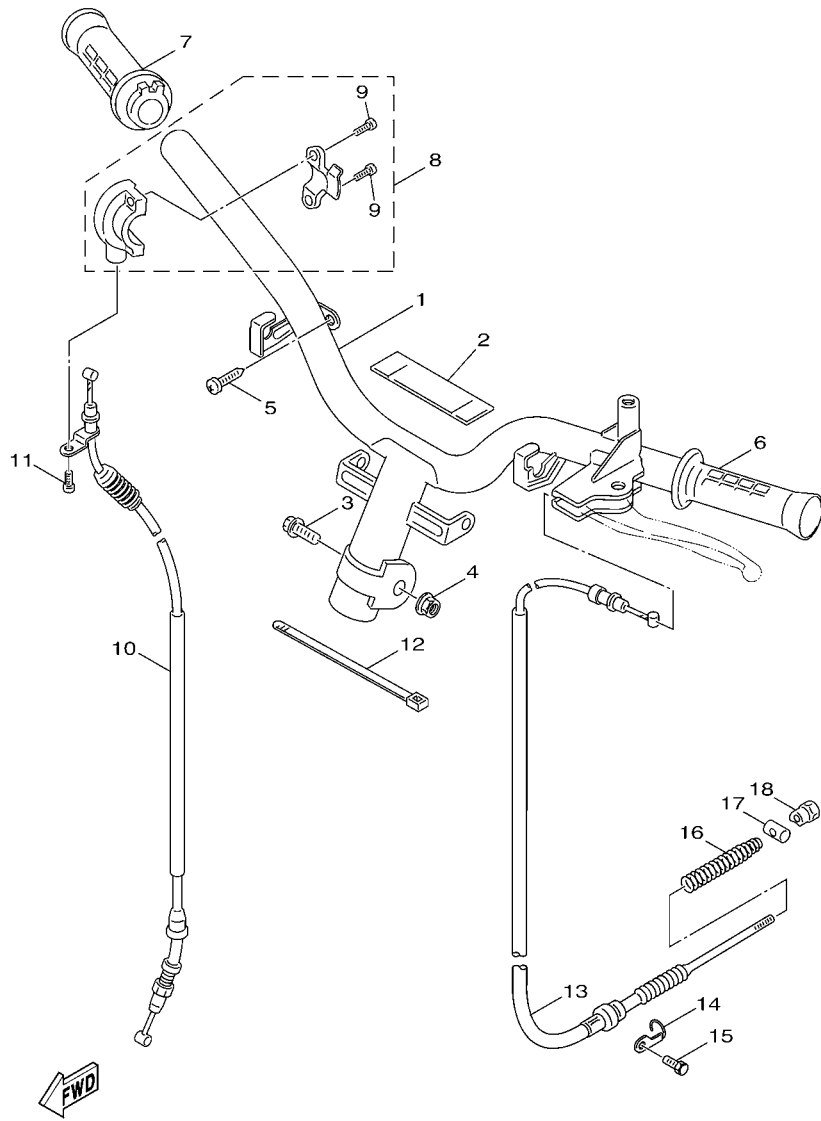
REF. NO.	PART NO.	DESCRIPTION	4P71				REMARKS
1	5WG-F582U-10	DISK, BRAKE (RIGHT)	1				
2	90149-08814	SCREW	3				
3	5VL-F580U-10	CALIPER ASSY (RIGHT)	1				
4	5VL-W0057-00	.PISTON ASSY, CALIPER	1				
5	5VL-W0047-00	..CALIPER SEAL KIT	1				
6	4KL-W0045-00	.BRAKE PAD KIT	1				
7	5VL-W0048-00	.BLEED SCREW KIT	1				
8	5VL-F5921-00	.BRACKET, SUPPORT	1				
9	5VL-F5977-00	.SPRING, RETURN	2				
10	5VL-F5744-00	.PIN 2	1				
11	5VL-F5922-00	.WASHER	1				
12	5VL-F5917-00	.BOOT, CALIPER	1				
13	5VL-F5817-00	.SEAL, CALIPER	1				
14	95027-10030	BOLT, FLANGE	2				



4P71516-E220

FIG. 22 REAR WHEEL

REF. NO.	PART NO.	DESCRIPTION	4P71				REMARKS
1	4KL-F5338-00-35	CAST WHEEL, REAR	1				SL
2	93900-00809	VALVE, RIM	1				
3	94110-10808	TIRE (100/90-10 56J TL C940)	1				CHENG SHIN
4	90185-14124	NUT, SELF-LOCKING	1				
5	90201-20276	WASHER, PLATE (T=1.0)	1				
6	5WG-X2534-00	BRAKE SHOE SET	1				
7	90506-12001	.SPRING, TENSION	1				
8	90506-15001	.SPRING, TENSION	1				
9	5MH-F5351-00	CAMSHAFT	1				
10	93210-108J3	O-RING	2				
11	4KL-F533A-00	PLATE, INDICATOR	1				
12	4KL-F5355-00	LEVER, CAMSHAFT	1				
13	90101-06278	BOLT	1				
14	5WG-F5326-00	PIN, PIVOT	1				
15	95707-10500	NUT, FLANGE	1				
16	93210-07890	O-RING	1				

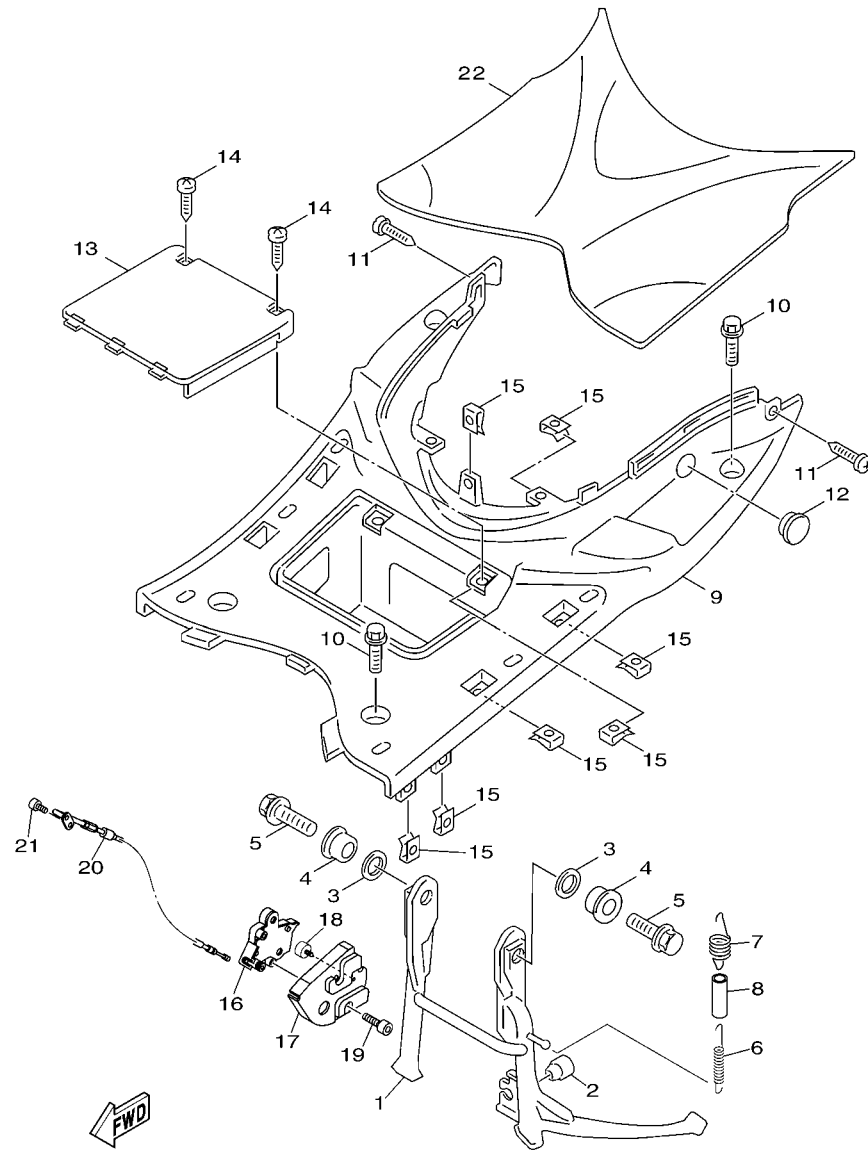


4P71516-E230

FIG. 23 STEERING HANDLE & CABLE

REF. NO.	PART NO.	DESCRIPTION	4P71				REMARKS
1	5WG-F6110-10	HANDLE COMP.	1				
2	5WG-F6113-00	DAMPER	1				
3	90105-10823	BOLT, FLANGE	1				
4	95607-10200	NUT, U FLANGE	1				
5	97707-50016	SCREW, TRUSS HEAD TAPPING	2				
6	4KL-F6241-00	GRIP	1				
7	4KL-F6240-00	GRIP ASSY	1				
8	4KL-F6270-10	CABLE CONNECTOR CAP ASSY	1				
9	98507-05012	.SCREW, PAN HEAD	2				
10	5WG-F6311-10	CABLE, THROTTLE 1	1				
11	98507-05010	SCREW, PAN HEAD	1				
12	90464-20809	CLAMP	1				
13	5WG-F6351-10	CABLE, BRAKE	1				
14	4KL-F637G-00	HOLDER, WIRE	1				
15	98507-06012	SCREW, PAN HEAD	1				
16	90501-16831	SPRING, COMPRESSION	1				
17	90249-12008	PIN	1				
18	90179-06843	NUT	1				





4P71516-E250

FIG. 25 STAND & FOOTREST

REF. NO.	PART NO.	DESCRIPTION	4P71				REMARKS
1	4P7-F7111-00	STAND, MAIN	1				
2	4KL-F7314-00	STOPPER	1				
3	90202-15804	WASHER, PLATE	2				
4	5WG-F7113-00	COLLAR, MAIN STAND	2				
5	9581N-10035	BOLT, FLANGE	4				
6	90506-35807	SPRING, TENSION	1				
7	90506-20809	SPRING, TENSION	1				
8	90445-197J2	HOSE (L60)	1				
9	5WG-F7481-00	BOARD, FOOTREST	1				
10	90119-06060	BOLT, WITH WASHER	4				
11	97707-50012	SCREW, TRUSS HEAD TAPPING	2				
12	5WG-F6199-00	PLUG, BLIND	1				
13	5WG-H2129-00	COVER, BATTERY	1				
14	97707-50012	SCREW, TRUSS HEAD TAPPING	2				
15	90183-05807	NUT, SPRING	13				
16	5WG-F7180-00	LOCK ASSY	1				
17	5WG-F7151-01	BRACKET, MAIN STAND	1				
18	4P7-F7114-00	STOPPER, MAIN STAND	1				
19	90109-06801	BOLT	2				
20	5WG-F473J-00	WIRE	1				
21	98507-05012	SCREW, PAN HEAD	1				
22	5WG-F7483-00	MAT 1	1				





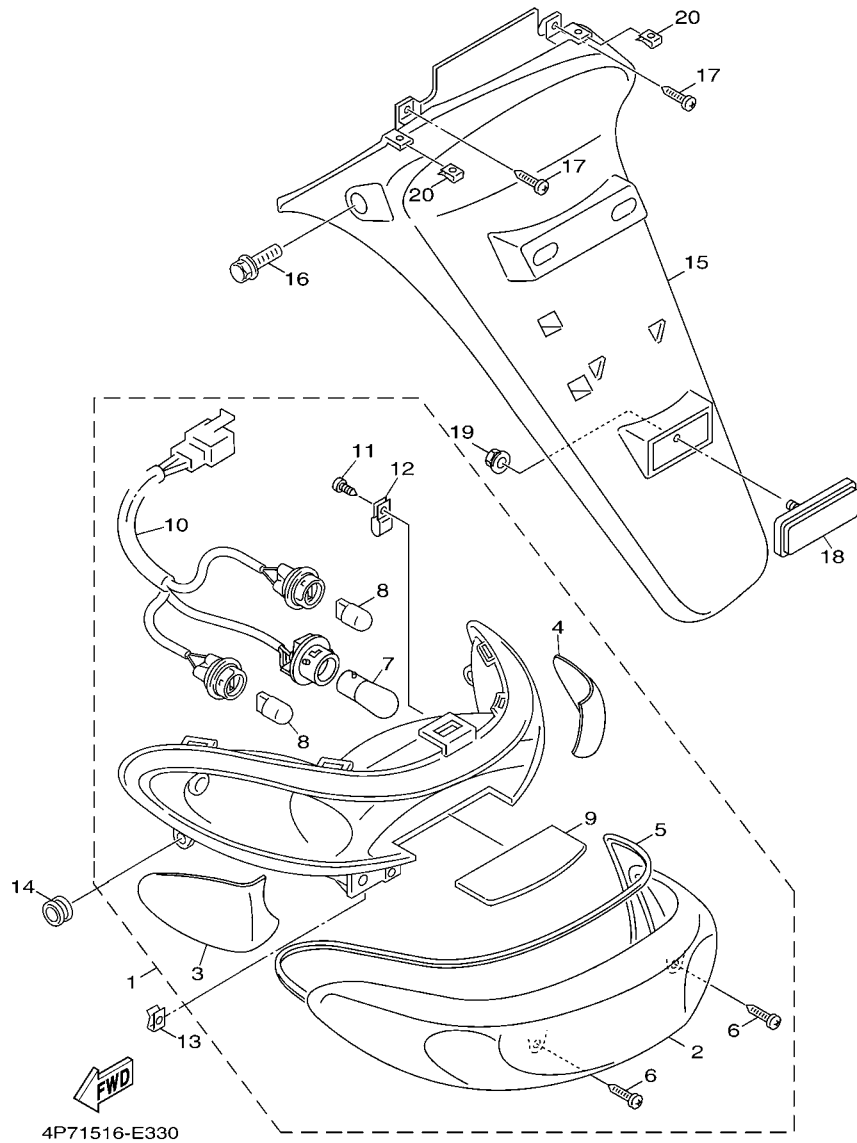








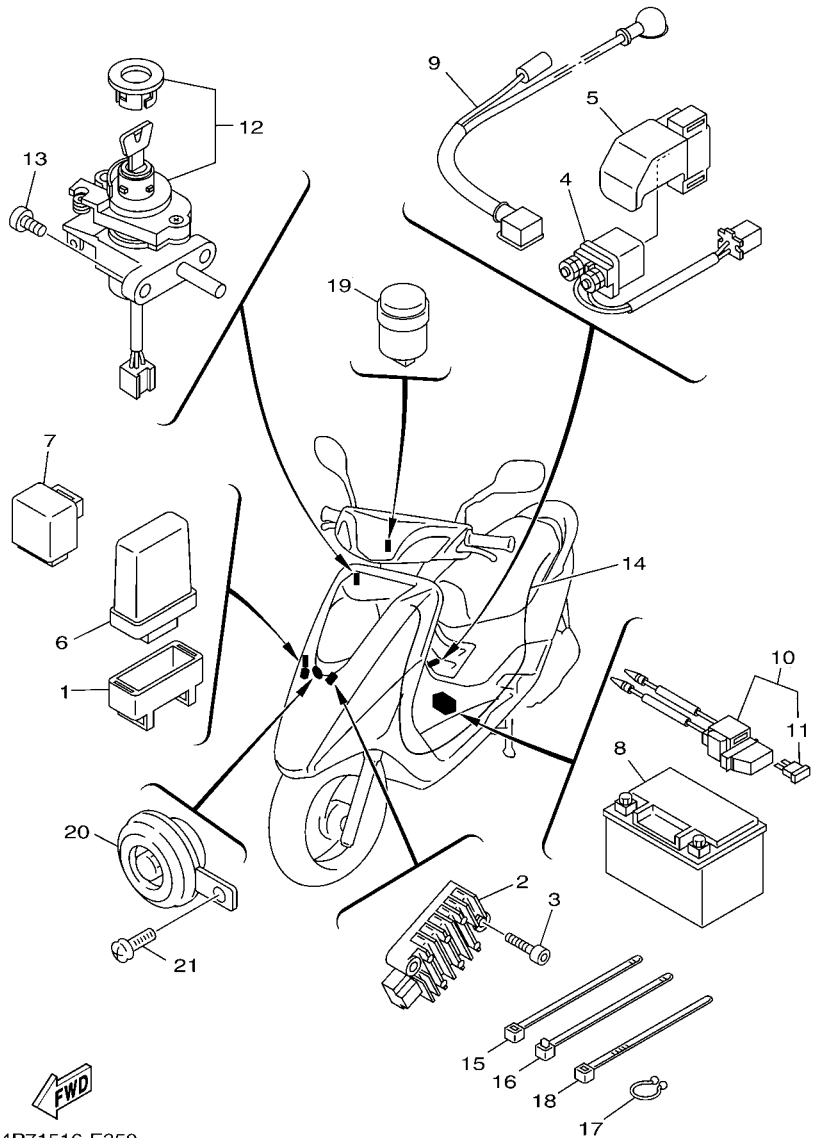




**FIG. 33 TAILLIGHT**

REF. NO.	PART NO.	DESCRIPTION	4P71				REMARKS
1	4P7-H4700-01	TAILLIGHT ASSY	1				
2	4P7-H4540-00	.LENS ASSY	1				
3	4P7-H333L-00	.LENS, INNER 1	1				
4	4P7-H333M-00	.LENS, INNER 2	1				
5	4P7-H4723-00	.GASKET, TAIL LENS	1				
6	4P7-H4724-00	.SCREW, LENS FITTING	2				
7	4P7-H4714-00	.BULB, TAILLIGHT (12V-21/5W)	1				
8	4P7-H3331-00	.BULB, FLASHER (12V-16W)	2				
9	4P7-H4743-00	.LENS, LICENCE LIGHT	1				
10	4P7-H4735-00	.CORD ASSY	1				
11	4P7-H4726-00	.SCREW	1				
12	4P7-H4746-00	.PLATE, SEAT BASE	1				
13	90183-05807	NUT, SPRING	2				
14	90480-14023	GROMMET	2				
15	5WG-F1685-00	BRACKET, LICENSE	1				
16	90109-06822	BOLT	2				
17	97707-50012	SCREW, TRUSS HEAD TAPPING	2				
18	3Y6-85130-02	REAR REFLECTOR ASSY	1				
19	95607-05200	NUT, U FLANGE	1				
20	90183-05807	NUT, SPRING	2				

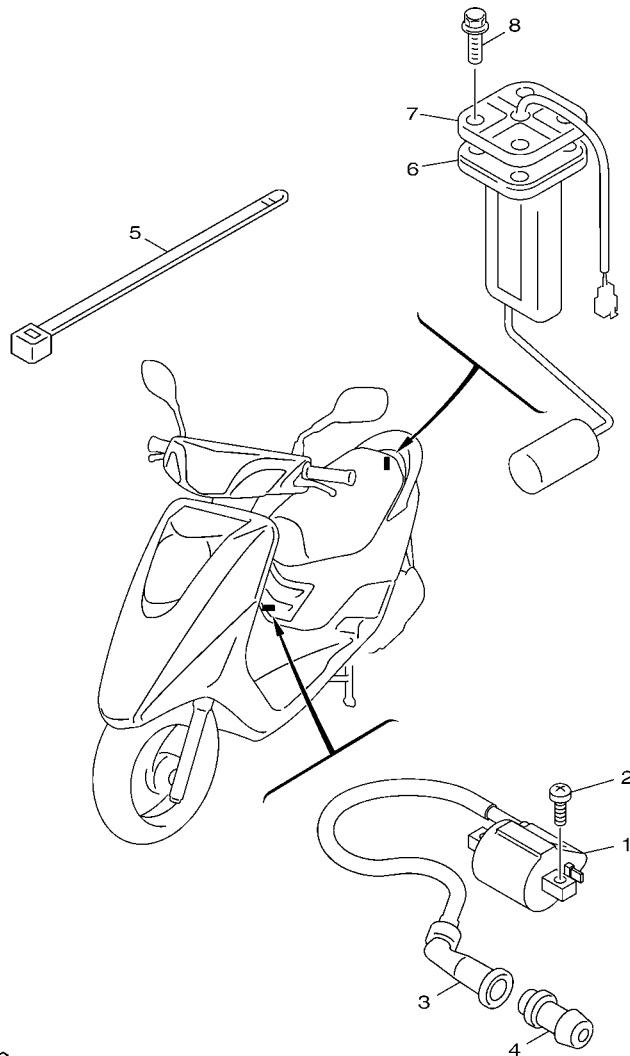




4P71516-E350

FIG. 35 ELECTRICAL 1

REF. NO.	PART NO.	DESCRIPTION	4P71				REMARKS
1	4P7-H5546-00	BAND	1				
2	5WG-H1960-00	RECTIFIER & REGULATOR ASSY	1				
3	98507-06025	SCREW, PAN HEAD	2				
4	5WG-H1940-10	STARTER RELAY ASSY	1				
5	5WG-H1952-00	HOLDER, RELAY	1				
6	4P7-H5540-00	C.D.I. UNIT ASSY	1				
7	3UH-85740-20	CONTROL UNIT ASSY	1				
8	4RK-82100-01	BATTERY ASSY (YTX7A-BS)	1				
9	5WG-H2115-00	WIRE, PLUS LEAD	1				
10	4KL-H2170-10	FUSE BOX ASSY	1				
11	4KL-H2151-10	.FUSE (15A-BL)	1				
12	4P7-H2501-10	MAIN SWITCH STEERING LOCK	1				
13	98507-06012	SCREW, PAN HEAD	2				
14	4P7-H2590-00	WIRE HARNESS ASSY	1				
15	90464-12812	CLAMP	4				
16	90464-20809	CLAMP	1				
17	90465-13152	CLAMP	1				
18	90464-23811	CLAMP	2				
19	5WG-H3350-00	FLASHER RELAY ASSY	1				
20	4P7-H3371-00	HORN	1				
21	95807-06012	BOLT, FLANGE	1				



  
 4P71516-E360

**FIG. 36 ELECTRICAL 2**

REF. NO.	PART NO.	DESCRIPTION	4P71				REMARKS
1	4P7-H2310-00	IGNITION COIL ASSY	1				
2	98507-06018	SCREW,PAN HEAD	2				
3	4KL-H2370-01	PLUG CAP ASSY	1				
4	5MH-H2372-00	SEAL, PLUG CAP	1				
5	90464-12812	CLAMP	1				
6	5WG-H5752-00	SENDER UNIT ASSY, FUEL METER	1				
7	4KL-H5753-00	GASKET, SENDER UNIT	1				
8	90119-05802	BOLT, WITH WASHER	4				
-----							
-----							
-----							
-----							
-----							
-----							
-----							
-----							

NUMERICAL INDEX

PART NO.	REF. NO.	PART NO.	REF. NO.	PART NO.	REF. NO.	PART NO.	REF. NO.	PART NO.	REF. NO.	PART NO.	REF. NO.
5LW-11133-10	1 - 2	5WG-E2658-00	4 - 8	5WG-E4876-00	8 - 18	4KL-E5687-00	10 - 13	5WG-F171E-00-P1	15 - 17	4TU-F3411-00	17 - 36
5LW-11134-10	1 - 3	5WG-E2659-00	4 - 9	5WG-E4883-00	8 - 23	4KL-E6111-00	11 - 1	5WG-F171E-00-P5	15 - 17	4KL-F3411-10	17 - 40
22K-11633-01	2 - 7	5WG-E2668-00	4 - 10	5WG-E4884-00	8 - 27	5WG-E6611-00	11 - 4	5WG-F1731-00-FE	15 - 13	4KL-F3412-20	17 - 37
5LW-12116-00	3 - 4	5WG-E2669-00	4 - 2	5WG-E4885-00	8 - 32	5WG-E6620-00	11 - 27	5WG-F1731-00-P1	15 - 13	4KL-F3412-30	17 - 39
22F-12156-00	3 - 11	5MH-E3300-20	5 - 1	5WG-E4901-00	7 - 1	4KL-E6626-00	11 - 28	5WG-F1731-00-P5	15 - 13	5MH-F3416-00	17 - 42
22F-12159-00	3 - 9	4KL-E3324-00	2 - 4	5WG-E4907-00	7 - 23	4KL-E7410-10	12 - 1	4P7-F173E-00	15 - 2	5WG-F3418-00	17 - 45
3TJ-14191-40	7 - 17	5MH-E3325-00	5 - 2	5WG-E490A-00	7 - 19	5WG-E7420-00	12 - 5	4P7-F173E-10	15 - 2	5WG-F341E-00	17 - 38
3TJ-14536-40	7 - 20	4KL-E3411-00	5 - 8	5WG-E490J-00	7 - 3	4KL-E7465-01	11 - 22	4P7-F173F-00	15 - 9	5WG-F341E-10	17 - 41
5WG-15521-00	10 - 3	4KL-E3416-00	9 - 11	5WG-E490K-00	7 - 18	5WG-E7465-10	11 - 23	4P7-F173F-10	15 - 9	4TU-F3479-00	17 - 12
4P7-2118N-01	19 - 18	5MH-E3475-00	5 - 5	5WG-E4933-00	7 - 4	5WG-E7465-20	11 - 30	5WG-F1741-00-FE	15 - 15		17 - 27
3HP-21568-E0	27 - 9	5WG-E3542-00	8 - 33	5WG-E4940-00	7 - 2	5WG-E7601-10	11 - 7	5WG-F1741-00-P1	15 - 15	5WG-F4110-10	18 - 1
3ME-2415E-01	19 - 19	5WG-E3556-10	6 - 16	5WG-E4943-27	7 - 7	5WG-E7602-02	11 - 19	5WG-F1741-00-P5	15 - 15	5WG-F414A-00	18 - 10
4RK-82100-01	35 - 8	5MH-E3569-00	4 - 11	5WG-E4947-00	7 - 5	5WG-E7611-00	11 - 17	5WG-F1746-00	15 - 7	5WG-F4311-00	18 - 6
3Y6-85130-02	33 - 18	5MH-E3575-00	6 - 5	5WG-E4948-01	7 - 8	5WG-E7620-10	11 - 8	5WG-F174G-00	15 - 21	5WG-F4312-00	18 - 8
3UH-85740-20	35 - 7	5WG-E3575-00	6 - 14	5WG-E4958-00	7 - 22	5WG-E7623-00	11 - 10		15 - 26	5WG-F4500-00	18 - 3
5WG-E1102-20	1 - 1	5WG-E3585-00	6 - 1	5WG-E4967-00	7 - 31	4KL-E7632-00	11 - 9	5WY-F1753-00	18 - 11	5MH-F4610-10	18 - 2
5WG-E111F-00	3 - 23	5WG-E3595-00	6 - 15	1B6-E4984-00	7 - 15	5MH-E7641-00	11 - 16	5WG-F1773-00	15 - 18	5WG-F4726-00	19 - 3
5WG-E1145-00	3 - 14	5WG-E3769-00	9 - 43	5WG-E4985-00	7 - 11	5WG-E7653-10	11 - 11	5WG-F1823-00	26 - 7	5WG-F4730-10	19 - 1
5WG-E1155-00	1 - 14	5WG-E4105-00	7 - 9	5WG-E4987-00	1 - 29	5WG-E7660-00	11 - 20	5WG-F2210-10	16 - 1	5WG-F473J-00	25 - 20
5WG-E1160-00	1 - 10	5WG-E4107-00	7 - 10	5WG-E5111-00	9 - 1	5WG-E7664-00	11 - 24	4KL-F2216-00	9 - 3	4P7-F473R-00	19 - 6
5WG-E1165-00	1 - 12	5WG-E4147-00	7 - 24	5WG-E5121-00	9 - 2	4KL-E7668-00	11 - 29	5WG-F3110-00	17 - 7	5WY-F4742-00	19 - 8
5WG-E1181-00	1 - 22	5WG-E414G-00	7 - 6	5WG-E5191-00	9 - 25	5WG-E7670-00	11 - 21		17 - 22	5WG-F475M-00	19 - 2
5WG-E1185-00	1 - 11	5WG-E4196-00	7 - 32	5WG-E5317-00	13 - 8	4KL-E7683-00	11 - 25	4KL-F3111-00	17 - 13	5WY-F4780-00	19 - 9
4KL-E1186-00	1 - 17	5WG-E4243-00	7 - 27	4KL-E5351-00	5 - 7	5WG-E7684-00	11 - 26		17 - 28	5WG-F478E-00	19 - 11
5WG-E1310-00	1 - 26	5WG-E4271-00	7 - 30	5WG-E5362-00	9 - 42	5WG-F1110-01	13 - 1	5WG-F3141-00	17 - 8	4P7-F4842-00	19 - 13
5WG-E1351-10	1 - 27	5WG-E4275-00	7 - 21	4KL-E5363-00	9 - 14	5WG-F1161-00	26 - 8		17 - 23	5WG-F5168-00-35	20 - 1
5WG-E1400-20	2 - 1	5WG-E4370-00	7 - 26	5MH-E5371-00	9 - 4	5WG-F116F-00	13 - 14	4TU-F3144-00	17 - 35	5WG-F5181-20	20 - 10
4KL-E1445-00	2 - 3	5WG-E4410-20	6 - 6	5WG-E5404-00	9 - 37	5WG-F118W-00	13 - 13	4GU-F3145-00	17 - 5	4KL-F5190-00	20 - 12
5MH-E1603-00	2 - 9	5WG-E4411-20	6 - 7	5WG-E5407-00	9 - 36	4P7-F1274-00	13 - 16		17 - 20	5WG-F5315-00	20 - 3
5WG-E1631-00-A0	2 - 6	5WG-E4412-20	6 - 8	5WG-E5411-10	9 - 20	4P7-F1410-00	13 - 5	5AP-F3147-00	17 - 14	5WG-F5326-00	22 - 14
5WG-E2111-00	3 - 1	5WG-E443E-00	6 - 10	5WG-E5417-01	9 - 28	5WG-F1420-00	13 - 2		17 - 29	4KL-F5338-00-35	22 - 1
5WG-E2113-00	3 - 5	5WY-E4445-00	8 - 6	4KL-E5421-00	9 - 16	5WG-F1481-00	13 - 3	5AP-F3153-00	17 - 6	4KL-F533A-00	22 - 11
5WG-E2117-00	3 - 7	5WG-E4451-00	6 - 9	5WG-E5451-10	9 - 21	5WG-F1482-00	13 - 6		17 - 21	5MH-F5351-00	22 - 9
5WG-E2118-00	3 - 6	5WG-E4476-00	6 - 13	5WG-E5453-10	9 - 29	5WG-F1519-00-P2	14 - 15	5AP-F3166-00	17 - 10	4KL-F5355-00	22 - 12
5WG-E2119-00	3 - 3	5WG-E4504-00	7 - 14	5WG-E5455-00	9 - 26	5WG-F1521-00	13 - 18		17 - 25	5VL-F5744-00	21 - 10
5WG-E2121-00	3 - 2	5WG-E4548-00	7 - 12	4KL-E5461-10	9 - 17	5WG-F1523-00	14 - 6	5WG-F3170-00	17 - 9	5VL-F580U-10	21 - 3
5WG-E2151-01	3 - 8	5WG-E4592-00	7 - 13	5WG-E5471-00	9 - 34	5WG-F1552-01	14 - 8		17 - 24	5VL-F5817-00	21 - 13
5MH-E2157-00	3 - 26	5WG-E4610-20	8 - 1	5WG-E5472-00	9 - 39	5WG-F1553-00	14 - 13	4KL-F3191-10	17 - 15	5WG-F582U-10	21 - 1
5WG-E2170-00	3 - 12	4KL-E4613-00	8 - 10	4KL-E5524-00	10 - 7	5WG-F1557-00	26 - 6		17 - 30	4KL-F5852-00	24 - 5
5WG-E2176-00	3 - 13	5WY-E4617-00	8 - 8	5MH-E5532-00	10 - 5	4P7-F1571-00	14 - 2	4KL-F3192-10	17 - 16	4KL-F5854-00	24 - 3
4KL-E2210-00	3 - 19	5WG-E4708-00	8 - 2	4KL-E5570-00	10 - 10	4P7-F1571-10	14 - 2		17 - 31	4KL-F585B-00	24 - 4
5MH-E2213-10	3 - 21	5WY-E4759-00	8 - 7	4KL-E5601-10	10 - 12	5WG-F1572-00	14 - 3	5WG-F3317-00	17 - 46	4KL-F5867-00	24 - 8
4KL-E2231-00	3 - 17	5WB-E4766-10	8 - 4	4KL-E5620-00	10 - 18	5WG-F1572-10	14 - 3	4P7-F3340-00	17 - 32	4KL-F5870-20	24 - 1
4KL-E2232-00	3 - 20	5WY-E4779-00	8 - 5	4KL-E5630-00	10 - 20	5WG-F1611-00	14 - 19	4RT-F3346-00	17 - 33	5WG-F5872-00	24 - 10
4KL-E2241-00	3 - 18	5WG-E4803-00	8 - 25	4KL-E5650-20	10 - 1	5WG-F1685-00	33 - 15	5LK-F3356-00	17 - 11	5WG-F5875-01	17 - 48
4P7-E2611-00	4 - 13	5WG-E4806-00	8 - 29	4KL-E5657-00	11 - 12	5MH-F1717-00	15 - 22		17 - 26	5WG-F5876-00	17 - 52
5WG-E2651-00	4 - 1	5WG-E4815-00	8 - 16	4KL-E5659-00	10 - 22	5WG-F1717-00	15 - 6	5WG-F339E-00	17 - 4	5WG-F5886-00	17 - 51
5WG-E2652-00	4 - 6	5WG-E4871-00	8 - 17	5MH-E5673-00	10 - 21	5WG-F171E-00-FE	15 - 17		17 - 19	5WG-F5887-00	17 - 50

NUMERICAL INDEX

PART NO.	REF. NO.	PART NO.	REF. NO.	PART NO.	REF. NO.	PART NO.	REF. NO.	PART NO.	REF. NO.	PART NO.	REF. NO.
4KL-F5896-00	24 - 7	4P7-H2590-00	35 - 14	5VL-W0057-00	21 - 4	90170-12338	11 - 18	90430-08816	9 - 13	92907-12600	28 - 5
4KL-F589H-00	24 - 6	4P7-H3310-01	30 - 1	4P7-X2150-20-FE	14 - 1	90176-08805	1 - 20	90445-197J2	25 - 8	92990-06600	8 - 15
5VL-F5917-00	21 - 12	4P7-H3311-00	30 - 2	4P7-X2150-20-P1	14 - 1	90179-06843	23 - 18	90446-13803	9 - 5	93102-17853	20 - 4
5VL-F5921-00	21 - 8		30 - 6	4P7-X2150-20-P5	14 - 1	90179-08804	8 - 11	90462-10803	6 - 3	93102-19851	9 - 30
5VL-F5922-00	21 - 11	4P7-H331E-00	30 - 3	4P7-X2171-01-FE	15 - 1	90179-14427	11 - 5	90464-08020	4 - 12	93102-22805	11 - 3
5VL-F5977-00	21 - 9	4P7-H3320-01	30 - 5	4P7-X2171-01-P3	15 - 1	90179-25615	17 - 43	90464-12812	35 - 15	93102-22843	9 - 10
5WG-F6110-10	23 - 1	4P7-H332E-00	30 - 7	4P7-X2171-01-P6	15 - 1	90183-05807	14 - 10		36 - 5	93102-26852	12 - 8
5WG-F6113-00	23 - 2	4P7-H3331-00	33 - 8	4P7-X2172-01-FE	15 - 8		14 - 17	90464-20809	23 - 12	93210-07890	22 - 16
5WG-F6145-00	27 - 4	4P7-H333L-00	33 - 3	4P7-X2172-01-P3	15 - 8		15 - 5		35 - 16	93210-09802	1 - 4
5MH-F6199-00	26 - 11	4P7-H333M-00	33 - 4	4P7-X2172-01-P6	15 - 8		15 - 11	90464-23811	35 - 18	93210-108J3	22 - 10
5WG-F6199-00	25 - 12	5WG-H3350-00	35 - 19	5WG-X217L-10-P2	15 - 20		15 - 19	90465-13152	35 - 17	93210-14104	9 - 15
4KL-F6240-00	23 - 7	4P7-H3371-00	35 - 20	5WG-X217M-10-P2	15 - 25		25 - 15	90467-08003	18 - 9	93210-15171	3 - 25
4KL-F6241-00	23 - 6	5WG-H3509-00	31 - 4	4P7-X2310-00	17 - 1		27 - 3	90467-08092	8 - 34	93210-15639	13 - 9
4KL-F6270-10	23 - 8	4P7-H3510-00	31 - 1	5WG-X2534-00	22 - 6		33 - 13	90467-09006	18 - 7	93210-25806	6 - 2
4P7-F6280-00	27 - 8	5WG-H3517-00	31 - 2	5WG-X2610-10-FE	27 - 1		33 - 20	90467-11106	9 - 7	93210-26668	29 - 6
4P7-F6290-00	27 - 7	5WG-H3517-V0	31 - 3	5WG-X2610-10-P1	27 - 1	90185-14124	22 - 4	90467-12802	9 - 6	93210-34803	5 - 10
5WG-F6311-10	23 - 10	5WG-H3550-10	31 - 6	5WG-X2610-10-P5	27 - 1	90201-06557	8 - 20	90467-13042	1 - 30	93210-448C2	1 - 18
5WG-F6351-10	23 - 13	5WG-H3912-01	34 - 1	4P7-X3102-00	17 - 2	90201-06814	8 - 9	90467-13813	6 - 11	93210-55669	29 - 3
4KL-F637G-00	23 - 14	4KL-H3922-11	34 - 9	4P7-X3103-00	17 - 17	90201-077F5	5 - 3	90467-16829	8 - 28	93210-71462	1 - 15
4P7-F7111-00	25 - 1	5WY-H3945-00	34 - 2	4P7-X3106-00	17 - 3	90201-08609	1 - 19	90468-08812	8 - 24	93211-028A9	9 - 31
5WG-F7113-00	25 - 4	5WG-H3963-00	34 - 4	4P7-X3107-10	17 - 18	90201-086P8	19 - 15	90480-12803	14 - 22	93306-003X8	10 - 8
4P7-F7114-00	25 - 18	5WG-H3975-10	34 - 5	90101-06278	22 - 13		19 - 17	90480-14023	33 - 14	93306-201X5	20 - 6
5WG-F7151-01	25 - 17	5WG-H3980-00	34 - 6	90101-10809	16 - 3	90201-10118	24 - 12	90480-15801	8 - 19	93306-203Y0	11 - 6
5WG-F7180-00	25 - 16	5MH-H3980-10	34 - 8	90105-08861	16 - 2	90201-108A3	10 - 4	90480-30167	4 - 5	93306-204Y4	12 - 7
4KL-F7314-00	25 - 2	4P7-H4310-01	32 - 1	90105-10823	23 - 3	90201-12172	9 - 41	90501-10312	34 - 12	93306-204YN	11 - 2
5WG-F7481-00	25 - 9	4P7-H4312-00	32 - 5	90109-06577	34 - 10	90201-156F8	12 - 3	90501-16829	5 - 9	93306-20599	2 - 2
5WG-F7483-00	25 - 22	4P7-H4314-00	32 - 2	90109-06801	25 - 19	90201-163G6	10 - 11	90501-16831	23 - 16	93306-301XF	20 - 5
4KL-F8100-00	19 - 20	4P7-H4347-00	32 - 4	90109-06822	19 - 7	90201-163J6	11 - 15	90506-12001	22 - 7	93306-301Y1	12 - 2
5WG-F8257-00	26 - 3	4P7-H4396-00	32 - 3		33 - 16	90201-17485	13 - 10	90506-15001	22 - 8	93306-302Y1	12 - 6
4P7-F8300-00	26 - 1	4P7-H4540-00	33 - 2	90113-06008	1 - 9	90201-175F6	10 - 16	90506-20809	25 - 7	93311-315X1	12 - 4
4KL-F8349-10	26 - 10	4P7-H4700-01	33 - 1	90116-08019	1 - 5	90201-20276	22 - 5	90506-35807	25 - 6	93317-110Y5	10 - 2
5WG-F8365-00	26 - 5	4P7-H4714-00	33 - 7	90116-08020	1 - 31	90202-05193	18 - 5	90508-40838	10 - 14	93450-14088	2 - 8
4KL-F836B-10	27 - 2	4P7-H4723-00	33 - 5		1 - 32	90202-15804	25 - 3	91317-06012	3 - 24	93604-12831	9 - 32
5WG-H1800-00	29 - 1	4P7-H4724-00	33 - 6	90119-05802	36 - 8	90202-26142	17 - 44	91317-06016	3 - 22	93900-00809	20 - 7
4KL-H1801-00	29 - 2	4P7-H4726-00	33 - 11	90119-06018	14 - 9	90208-12050	11 - 13	91317-06025	1 - 25		22 - 2
4KL-H1828-00	29 - 4	4P7-H4735-00	33 - 10	90119-06060	14 - 14	90241-10015	19 - 5		1 - 28	94101-12302	17 - 34
5WG-H183G-00	29 - 5	4P7-H4743-00	33 - 9		25 - 10	90249-12008	23 - 17	91317-06035	9 - 23	94110-10807	20 - 8
5WG-H1940-10	35 - 4	4P7-H4746-00	33 - 12	90119-08839	19 - 16	90280-03045	2 - 5	91317-06040	9 - 19	94110-10808	22 - 3
5WG-H1952-00	35 - 5	4KL-H5510-01	28 - 2	90149-06011	18 - 4	90340-12806	9 - 40	91317-06050	8 - 21	94568-90088	3 - 16
5WG-H1960-00	35 - 2	4P7-H5540-00	35 - 6	90149-08814	21 - 2	90380-17234	10 - 17	91317-06060	9 - 9	94701-00353	1 - 21
5WG-H2115-00	35 - 9	4P7-H5546-00	35 - 1	90153-06803	1 - 6	90387-063F7	14 - 21		9 - 24	95027-10030	21 - 14
5WG-H2129-00	25 - 13	4P7-H5550-00	28 - 1	90159-05010	27 - 6	90387-068F8	8 - 31	91317-08016	19 - 14	95607-05100	34 - 3
4KL-H2151-10	35 - 11	5WG-H5752-00	36 - 6	90159-06033	14 - 20	90387-068F9	4 - 3	91317-08030	10 - 19	95607-05200	33 - 19
4KL-H2170-10	35 - 10	4KL-H5753-00	36 - 7	90159-06067	26 - 4	90387-125J1	20 - 11	91A11-07048	18 - 12	95607-06100	34 - 11
4P7-H2310-00	36 - 1	5WG-W0041-00	24 - 2	90159-06812	14 - 4	90387-12825	20 - 2	92017-06020	9 - 33	95607-10200	13 - 4
4KL-H2370-01	36 - 3	4KL-W0045-00	21 - 6	90160-05803	27 - 5	90387-168D2	11 - 14	92017-06025	24 - 9		13 - 7
5MH-H2372-00	36 - 4	5VL-W0047-00	21 - 5	90170-05302	3 - 10	90401-10805	24 - 11	92907-04600	7 - 29		23 - 4
4P7-H2501-10	35 - 12	5VL-W0048-00	21 - 7	90170-12181	28 - 7	90430-06014	1 - 7	92907-12100	28 - 6	95607-12200	20 - 9

NUMERICAL INDEX

PART NO.	REF. NO.	PART NO.	REF. NO.	PART NO.	REF. NO.	PART NO.	REF. NO.	PART NO.	REF. NO.	PART NO.	REF. NO.
95617-06625	1 - 8	97707-50016	15 - 24								
95707-06500	6 - 4		15 - 28								
	8 - 22		23 - 5								
	8 - 30		26 - 2								
	19 - 4		30 - 4								
95707-10500	16 - 4		30 - 8								
	22 - 15		31 - 5								
95807-06010	17 - 47		32 - 6								
	19 - 10	97707-60530	4 - 7								
95807-06012	8 - 26	97780-50512	15 - 16								
	13 - 17	98502-04012	7 - 16								
	17 - 53	98507-03005	34 - 7								
	26 - 9	98507-04008	7 - 28								
	35 - 21	98507-05010	23 - 11								
95807-06014	13 - 15	98507-05012	19 - 12								
	18 - 13		23 - 9								
95807-06020	17 - 49		25 - 21								
95817-08016	3 - 15	98507-06012	10 - 6								
	9 - 12		23 - 15								
95817-08030	8 - 13		35 - 13								
95817-08050	8 - 12	98507-06018	36 - 2								
9581N-10030	13 - 12	98507-06020	1 - 16								
9581N-10035	25 - 5	98507-06025	35 - 3								
97080-06008	8 - 14	98517-05014	7 - 25								
97507-06525	29 - 7	98707-06020	5 - 6								
97527-06512	1 - 13	98907-06012	9 - 27								
97607-06214	4 - 14	98907-06016	9 - 38								
97607-06220	4 - 4	98907-06020	9 - 35								
	6 - 12	98980-06020	8 - 3								
97607-06225	6 - 17	99001-05600	5 - 4								
97607-06316	28 - 3	99009-17400	10 - 15								
97607-06335	28 - 4		13 - 11								
97707-50012	14 - 5	99009-35700	10 - 9								
	14 - 11	99530-10114	1 - 23								
	14 - 18		1 - 24								
	15 - 3		9 - 18								
	15 - 10		9 - 22								
	15 - 14	99530-12016	9 - 8								
	15 - 23										
	15 - 27										
	25 - 11										
	25 - 14										
	33 - 17										
97707-50016	14 - 7										
	14 - 12										
	14 - 16										
	15 - 4										
	15 - 12										