

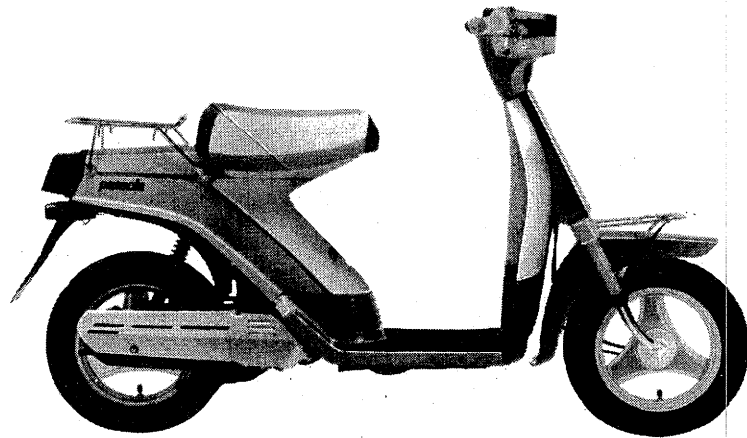
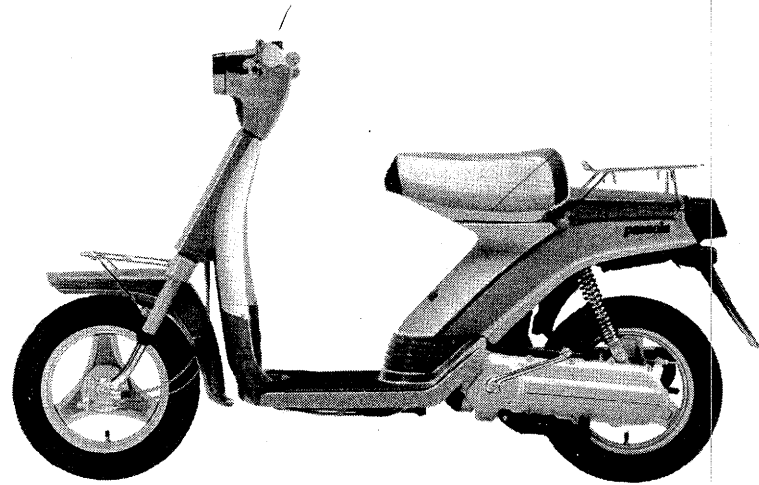
# **YAMAHA**

## **PARTS CATALOGUE**

### **SA50G (4F1)**

**104F1-200E1**







# FOREWORD

This Parts Catalogue is related to the parts in use for the Yamaha SA 50G (4F1).  
When you are ordering replacement parts for the SA 50G (4F1), refer to this Parts Catalogue and quote both part numbers and part names correctly.

1. Modifications or additions which have been made after issue of the Parts Catalogue will be announced in the Yamaha Parts News.  
It is advisable that according to the Yamaha Parts News you make necessary corrections to the Parts Catalogue on hand to keep it up-to-date.

2. Abbreviations

The following abbreviations are used in this Parts Catalogue.

- U.R. Use size (thickness) and/or number as required.
- U.N. Use as many as you need.
- A.P. Alternate Parts
- L.M. Local Made
- F# Frame No. (Applicable machine No.)

3. The parts marked with (\*) in the parts number column of this Catalogue are not supplied with by Yamaha, those have to be found locally.
4. Parts, which are to be supplied in the form of assemblies, are listed with an indention of one letter's space, and a dot ( . ) is put against the name of each part.

**EXAMPLE** CARBURETOR ASS'Y  
     . JET, pilot  
     . NOZZLE, main

5. Indication of No. of constituent parts for assembly

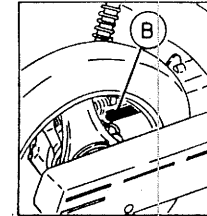
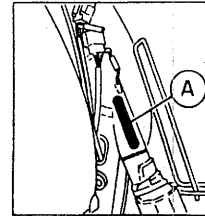
The numeral appearing to the right of each constituent part under the description indicates the quantity of such parts for each individual assembly unit.

**EXAMPLE**

Part No.	Description	Q'ty	Remarks
2F5-83310-60	FRONT FLASHER LIGHT ASS'Y	2	
115-83311-60	. BULB (6V-18W)	1	
1M1-83309-60	. REFLECTOR	1	

6. Initial Serial No. and Color Code

(A) Frame Serial No.	2T4-505101 and following
(B) Engine Serial No.	2T4-505101 and following



Color Code	Color Name	Abbreviate
26	Competition Yellow	CPY
3G	Milky Brown	MKB
L3	Competition Light Green	CLG

7. Applicable colors of graphics are represented in the "Remarks" column by the letter(s) appropriately picked out of the full word(s) showing such colors.

**EXAMPLE**

Part No.	Description	Q'ty	Remarks
2N4-24110-00-X5	FUEL TANK COMP.	1	MAXIM RED
3J1-24240-10	. GRAPHIC, fuel tank set	1	for MXR

# CONTENTS

## ENGINE

Fig. 1	Cylinder .....	1
Fig. 2	Crankshaft - Piston .....	2
Fig. 3	C.D. Magneto .....	3
Fig. 4	Air Shroud - Fan .....	4
Fig. 5	Oil Pump .....	5
Fig. 6	Intake .....	6
Fig. 7	Carburetor .....	7
Fig. 8	Exhaust .....	9
Fig. 9	Crankcase .....	10
Fig. 10	Kick Starter .....	11
Fig. 11	Clutch .....	12
Fig. 12	Transmission .....	13

## CHASSIS

Fig. 13	Frame .....	14
Fig. 14	Front Fender - Rear Fender .....	15
Fig. 15	Side Cover .....	16
Fig. 16	Oil Tank .....	17
Fig. 17	Rear Suspension .....	18
Fig. 18	Front Fork .....	19
Fig. 19	Fuel Tank .....	20
Fig. 20	Seat .....	21
Fig. 21	Front Wheel .....	22
Fig. 22	Rear Wheel .....	23
Fig. 23	Handlebar - Cable .....	24
Fig. 24	Cowling .....	25
Fig. 25	Stand - Footrest .....	26
Fig. 26	Leg Shield .....	27
Fig. 27	Flasher Light .....	28
Fig. 28	Speedometer .....	29
Fig. 29	Headlight .....	30
Fig. 30	Taillight .....	31

Fig. 31	Electrical 1 .....	32
Fig. 32	Handle Switch - Lever .....	33

## REPAIR KIT

Fig. 33	Repair Kit .....	34
---------	------------------	----

## INDEX

Numerical Index
Parts Name Index

FIG. 1 CYLINDER

REF. NO.	PART NO.	DESCRIPTION	Q'TY	REMARKS
1	2T4-11111-10	HEAD, cylinder 1	1	
2	2T4-1111F-00	PLATE	1	
3	92501-06012	SCREW, Pan head	2	
4	90445-08388	HOSE	1	
5	90445-08389	HOSE	1	
6	2T4-14399-02	VALVE, bimetal	1	STD
	2T4-14399-10	VALVE, bimetal	1	AP
7	90445-08411	HOSE	1	
8	517-11181-00	GASKET, cylinder head 1	1	
9	94703-00159	PLUG, sPark (NGK BP4HS)	1	
10	2T4-11311-00	CYLINDER 1	1	
11	2E9-11351-00	GASKET, cylinder	1	
12	90116-06269	BOLT, stud	4	
13	90201-06643	WASHER, Plate	4	
14	95301-06600	NUT	4	

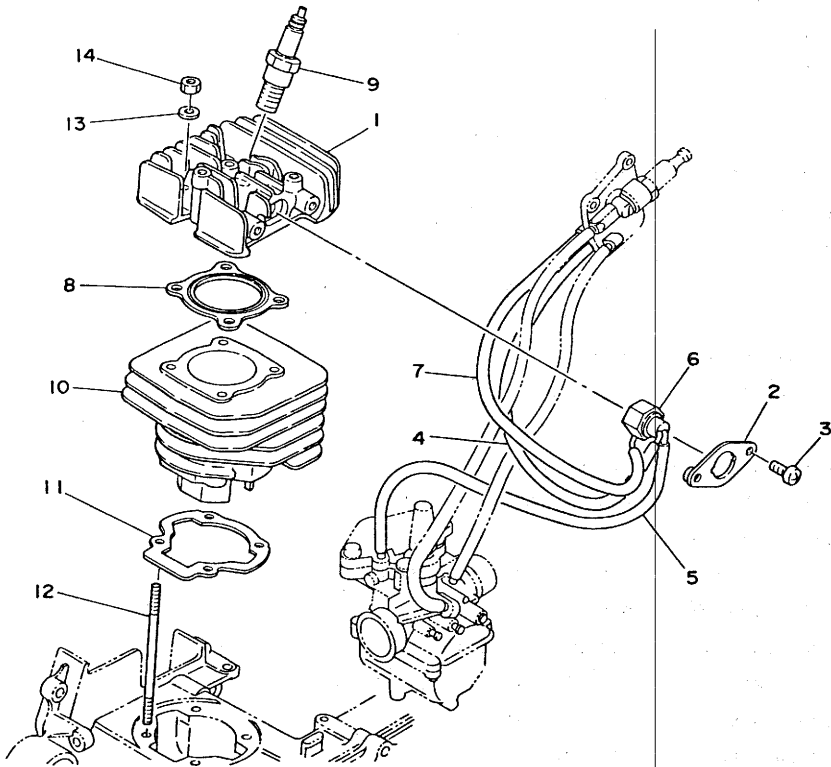
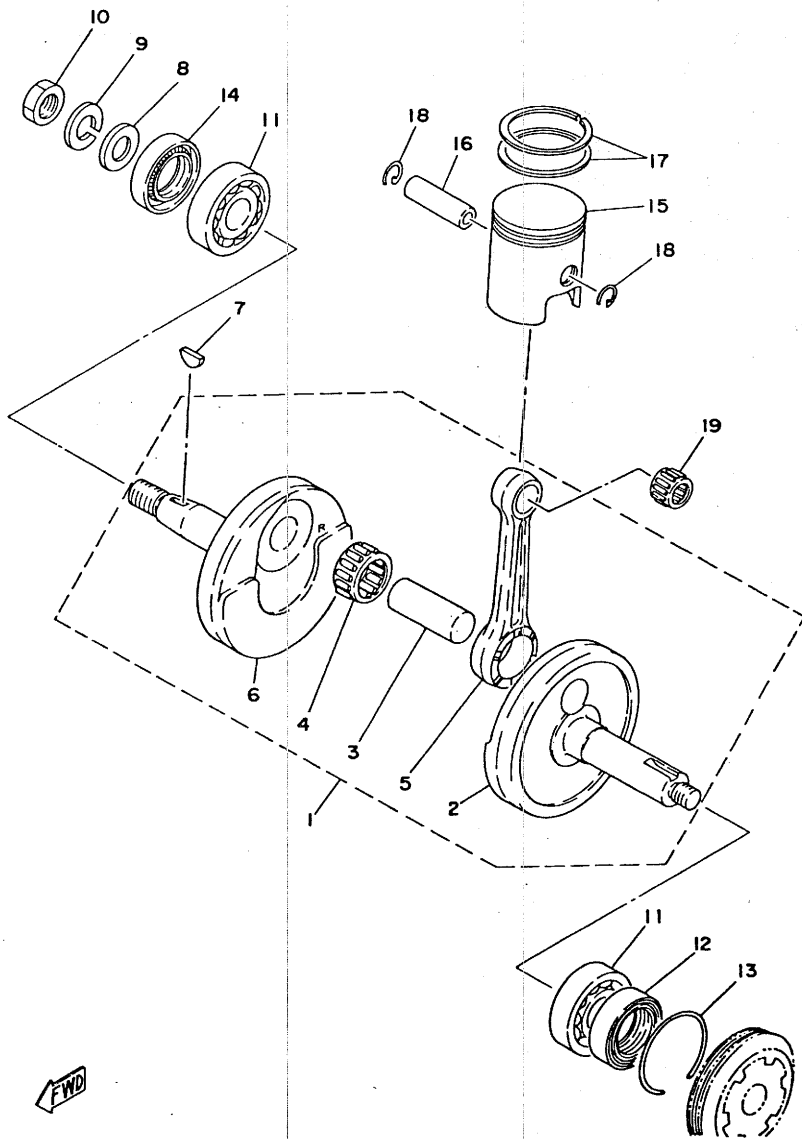
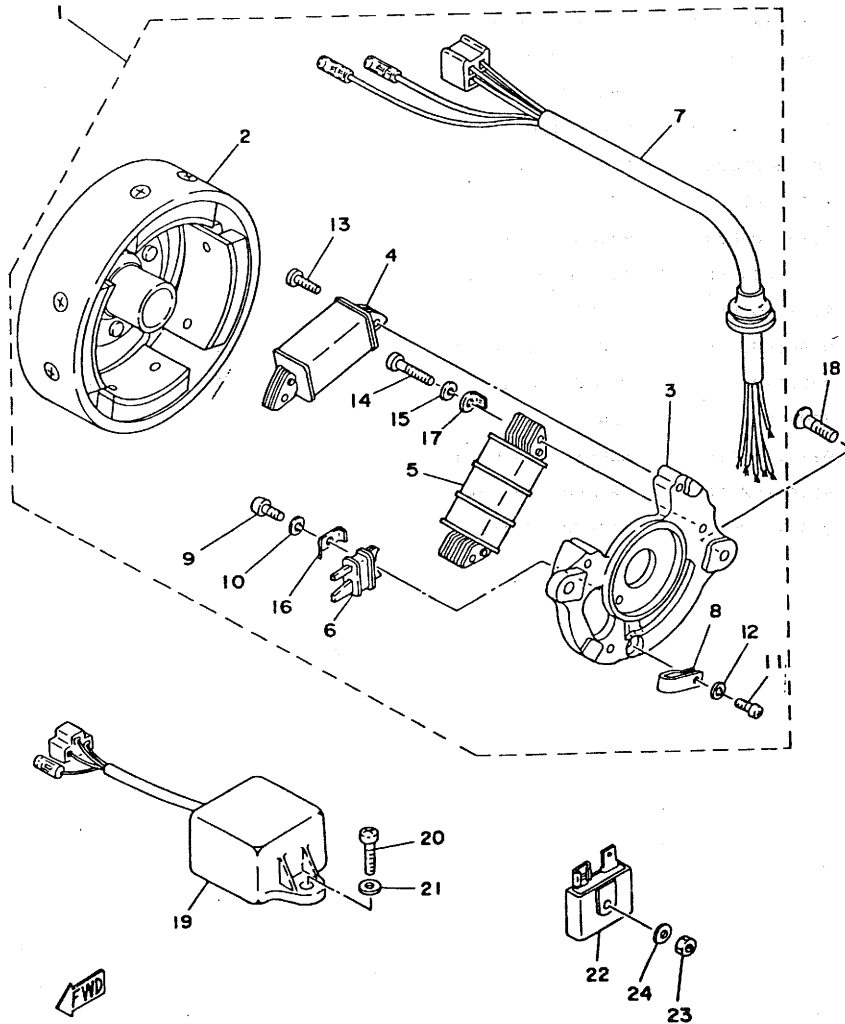


FIG. 2 CRANKSHAFT•PISTON



REF. NO.	PART NO.	DESCRIPTION	Q'TY	REMARKS
1	2T4-11400-10	CRANKSHAFT ASSY	1	
2	2T4-11412-10	•CRANK 1	1	
3	2E9-11681-00	•PIN, crank 1	1	
4	93310-416F7	•BEARING, cylindrical	1	
5	2E9-11651-00	•ROD, connecting	1	
6	2T4-11422-10	•CRANK 2	1	
7	90280-03017	KEY, woodruff	1	
8	92901-12600	WASHER, Plate	1	
9	92901-12100	WASHER, sPring	1	
10	95301-12700	NUT	1	
11	93306-20313	BEARING (B6203)	2	
12	93102-23174	OIL SEAL	1	
13	90468-10081	CLIP	1	
14	93102-17067	OIL SEAL	1	
15	2E9-11631-00-A0	PISTON (STD)	1	UR
	2E9-11631-00-X0	PISTON (STD)	1	UR
	2E9-11631-00-Y0	PISTON (STD)	1	UR
	2E9-11635-00	PISTON (1ST O/S 0.25MM)	1	AP
	2E9-11636-00	PISTON (2ND O/S 0.50MM)	1	AP
16	2E9-11633-00	PIN, Piston	1	
17	260-11610-02	PISTON RING SET (STD)	1	
	260-11610-12	PISTON RING SET (1ST O/S)	1	AP
	260-11610-22	PISTON RING SET (2ND O/S)	1	AP
18	93450-11021	CIRCLIP	2	
19	93310-21038	BEARING, cylindrical	1	

FIG. 3 C.D.I MAGNETO



REF. NO.	PART NO.	DESCRIPTION	Q'TY	REMARKS
1	2T4-85500-M0	C.D.I. MAGNETO ASSY	1	
2	2T4-85550-M0	.ROTOR ASSY	1	
3	2E9-85561-M0	.BASE, magneto	1	
4	2T4-85520-M1	.COIL, charge	1	
5	2T4-81313-M0	.COIL, lighting 1	1	
6	2E9-85580-M1	.COIL, Pulser	1	
7	2T4-8131X-M1	.CORD ASSY	1	
8	90461-05036	.CLAMP	1	
9	98503-04010	.SCREW, Pan head	1	
10	92901-04100	.WASHER, sPring	1	
11	98501-04006	.SCREW, Pan head	1	
12	92901-04100	.WASHER, sPring	1	
13	98501-04018	.SCREW, Pan head	2	
14	98501-04025	.SCREW, Pan head	2	
15	92901-04100	.WASHER, sPring	2	
16	2T4-85568-M1	.TERMINAL, earth 1	1	
17	2T4-85569-M1	.TERMINAL, earth 2	1	
18	92701-06015	SCREW, flat head	2	
19	2E9-85540-M0	C.D.I. UNIT ASSY	1	
20	92501-06014	SCREW, Pan head	1	
21	92901-06600	WASHER, Plate	1	
22	353-81970-50	RECTIFIER ASSY	1	UR
	353-81970-63	RECTIFIER ASSY	1	UR
23	95301-05600	NUT	1	
24	92901-05600	WASHER, Plate	1	

FIG. 4 AIR SHROUD-FAN

REF. NO.	PART NO.	DESCRIPTION	Q'TY	REMARKS
1	2T4-12651-01	AIR SHROUD, cylinder 1	1	
2	802-83923-00	COLLAR, lever 2	1	
3	2E9-12652-01	AIR SHROUD, cylinder 2	1	
4	2E9-11161-02	ABSORBER 1	1	
5	2T4-12631-01	DEFLECTOR 1	1	
6	90153-06020	SCREW, hexagon	2	
7	97301-06014	BOLT	2	
8	92901-06600	WASHER, Plate	2	
9	2T4-12653-00	AIR SHROUD, cylinder 3	1	
10	90462-06044	CLAMP	1	
11	92501-06025	SCREW, Pan head	3	
12	92901-06600	WASHER, Plate	3	
13	2E9-12611-01	FAN	1	
14	92501-06015	SCREW, Pan head	3	
15	92901-06100	WASHER, sPring	3	
16	92901-06600	WASHER, Plate	3	

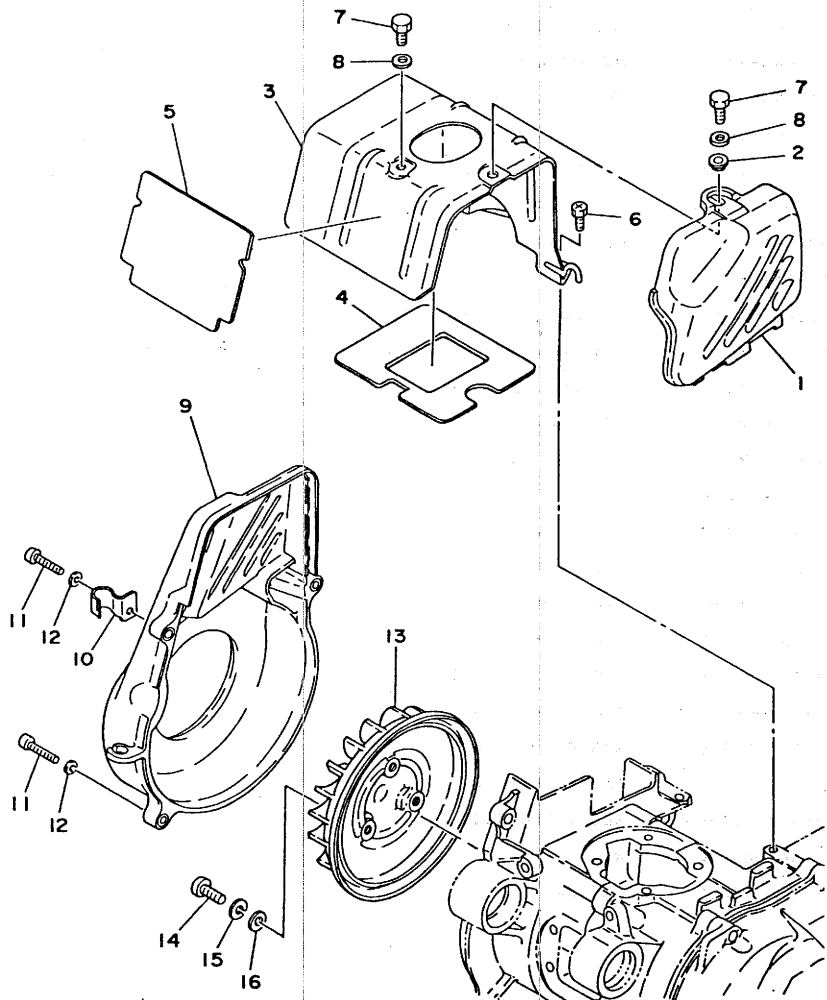
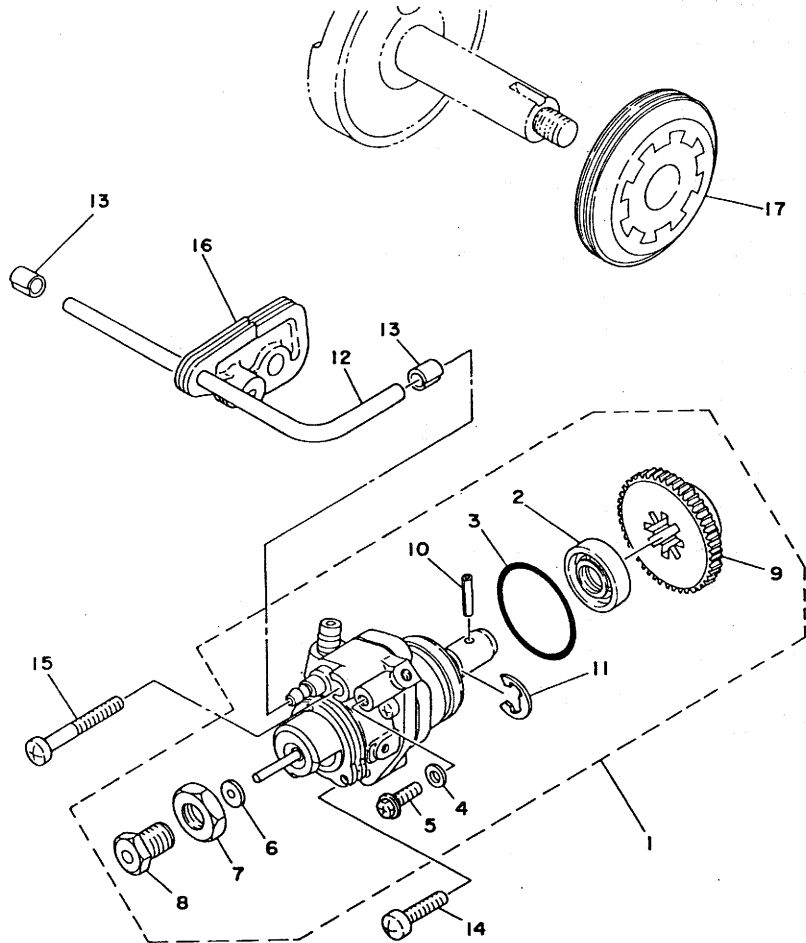


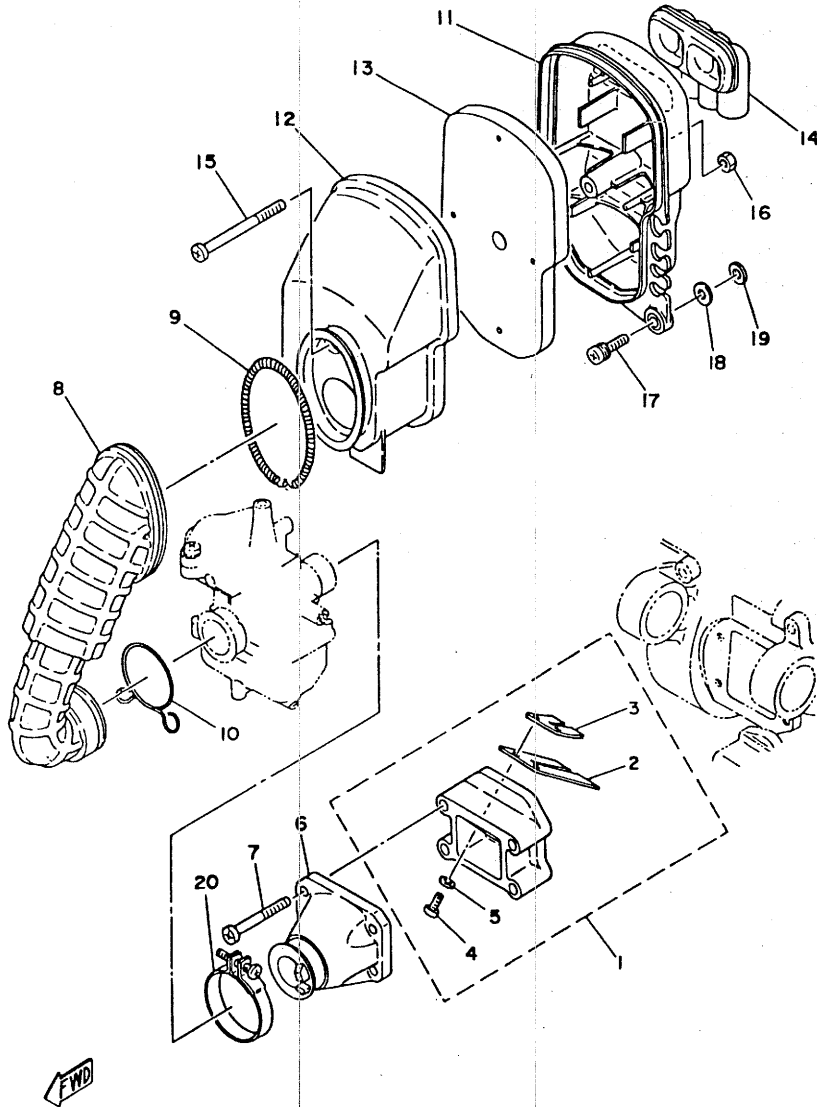
FIG. 5 OIL PUMP



REF. NO.	PART NO.	DESCRIPTION	Q'TY	REMARKS
1	2T4-13101-10	OIL PUMP ASSY	1	
2	93101-10001	•OIL SEAL	1	
3	93210-26240	•O-RING	1	
4	90430-04004	•GASKET	1	
5	90149-04135	•SCREW	1	
6	384-13138-00	•PLATE, adjustin&	1	
7	90170-10105	•NUT	1	
8	90401-10029	•BOLT, union	1	
9	2E9-13124-00	•GEAR, worm wheel (88T)	1	
10	91609-30014	•PIN, sPring	1	
11	93430-08006	•CIRCLIP	1	
12	90445-05352	HOSE	1	
13	90468-02033	CLIP	2	
14	98501-05020	SCREW, Pan head	1	
15	98501-05035	SCREW, Pan head	1	
16	2E9-13174-00	HOLDER, oil PiPe	1	
17	2E9-13178-01	GEAR, PumP drive	1	

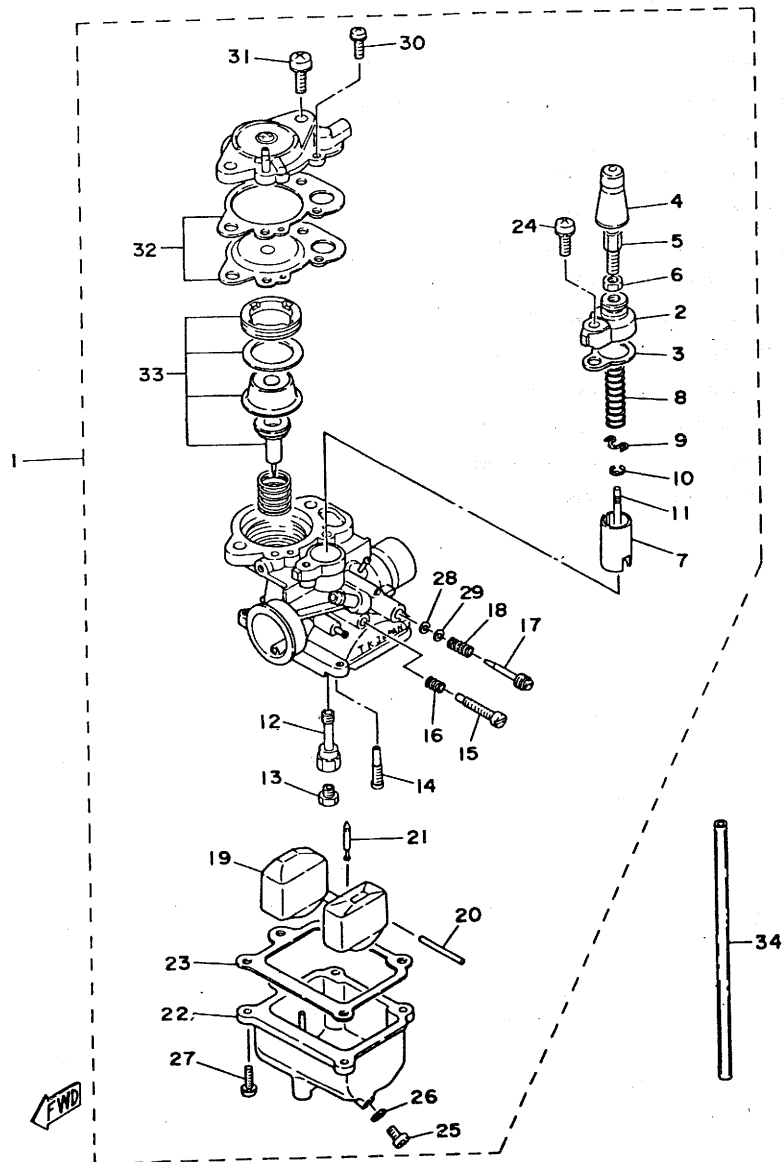
FWD

FIG. 6 INTAKE



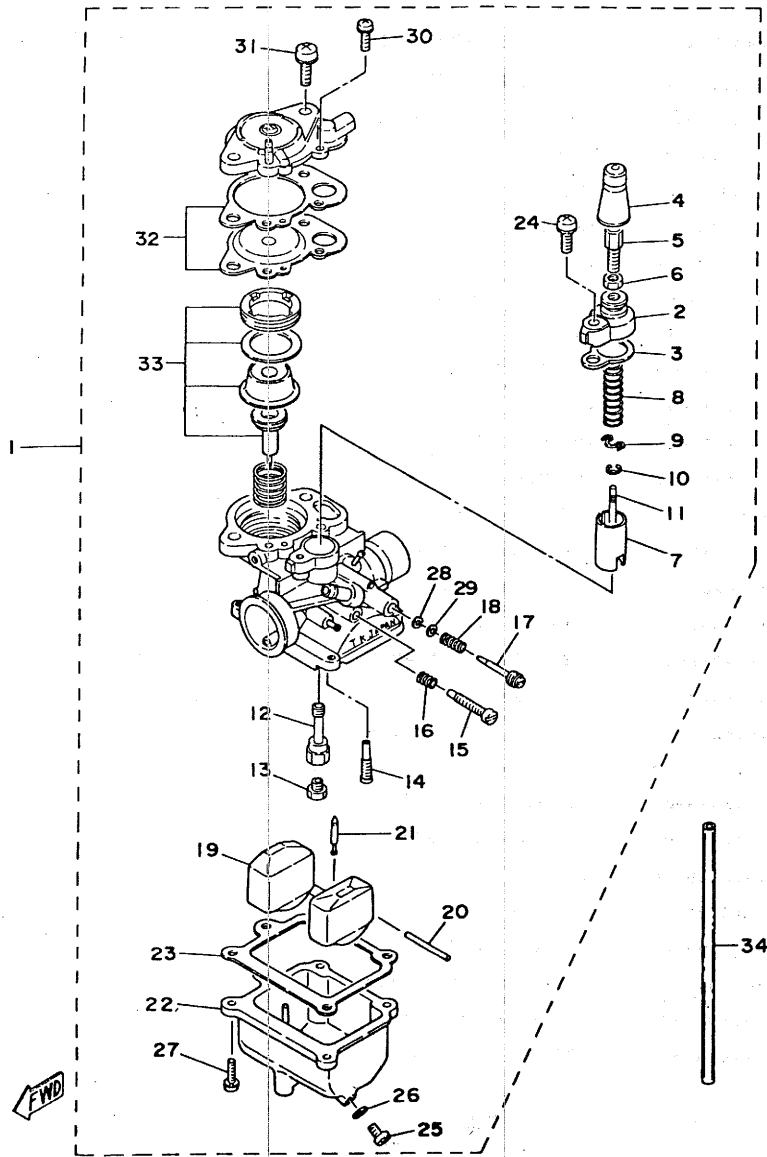
REF. NO.	PART NO.	DESCRIPTION	Q'TY	REMARKS
1	2T4-13610-01	REED VALVE ASSY	1	
2	2E9-13613-02	•REED, valve	1	
3	2T4-13616-00	•STOPPER, reed valve	1	
4	98501-03008	•SCREW, Pan head	2	
5	92901-03100	•WASHER, sPring	2	
6	2T4-13555-01	MANIFOLD, intake	1	
7	92501-06040	SCREW, Pan head	4	
8	2T4-14453-00	JOINT, air cleaner 1	1	
9	90501-06490	SPRING, comPression	1	
10	90467-20023	CLIP	1	
11	2T4-14411-00	CASE, air cleaner 1	1	
12	2T4-14412-00	CAP, cleaner case 1	1	
13	2T4-14451-00	ELEMENT, air cleaner	1	
14	2E9-14437-01	DUCT	1	
15	98501-05070	SCREW, Pan head	1	
16	95301-05600	NUT	1	
17	90159-06020	SCREW, with washer	2	
18	90430-06012	GASKET	2	
19	92901-06200	WASHER, Plain	2	
20	90460-30143	CLAMP, hose	1	

FIG. 7 CARBURETOR



REF. NO.	PART NO.	DESCRIPTION	Q'TY	REMARKS
1	2T4-14301-10	CARBURETOR ASSY 1	1	
2	2T4-14168-00	•CAP, mixing chamber	1	
3	2T4-14126-00	•GASKET	1	
4	367-14169-00	•CAP	1	
5	288-14124-00	•SCREW, cable adjusting	1	
6	288-14161-00	•NUT, cable adjusting	1	
7	2T4-14312-20	•VALVE, throttle 1	1	
8	2T4-14331-00	•SPRING, throttle valve	1	
9	2T4-14136-00	•SEAT, spring	1	
10	2T4-14137-00	•CLIP	1	
11	2T4-14336-01	•NEEDLE	1	
12	2T4-14341-00	•NOZZLE, main	1	
13	288-14343-49	•JET, main (#098)	1	UR STD
	288-14343-48	•JET, main (#096)	1	UR
	288-14343-50	•JET, main (#100)	1	UR
14	2T4-14353-21	•JET, Pilot (#042)	1	UR STD
	2T4-14342-20	•JET, Pilot (#040)	1	UR
	2T4-14342-22	•JET, Pilot (#044)	1	UR
15	2T4-14211-00	•SCREW, Pilot adjusting	1	
16	2T4-14212-00	•SPRING, Pilot adjusting	1	
17	2T4-14323-00	•SCREW, air adjusting	1	
18	2T4-14337-00	•SPRING, air adjusting	1	
19	2T4-14385-00	•FLOAT	1	
20	367-14386-00	•PIN, float	1	
21	2T4-14392-00	•VALVE, needle	1	
22	2T4-14381-21	•BODY, float chamber	1	UR STD
	2T4-14381-20	•BODY, float chamber	1	UR
	2T4-14381-22	•BODY, float chamber	1	UR

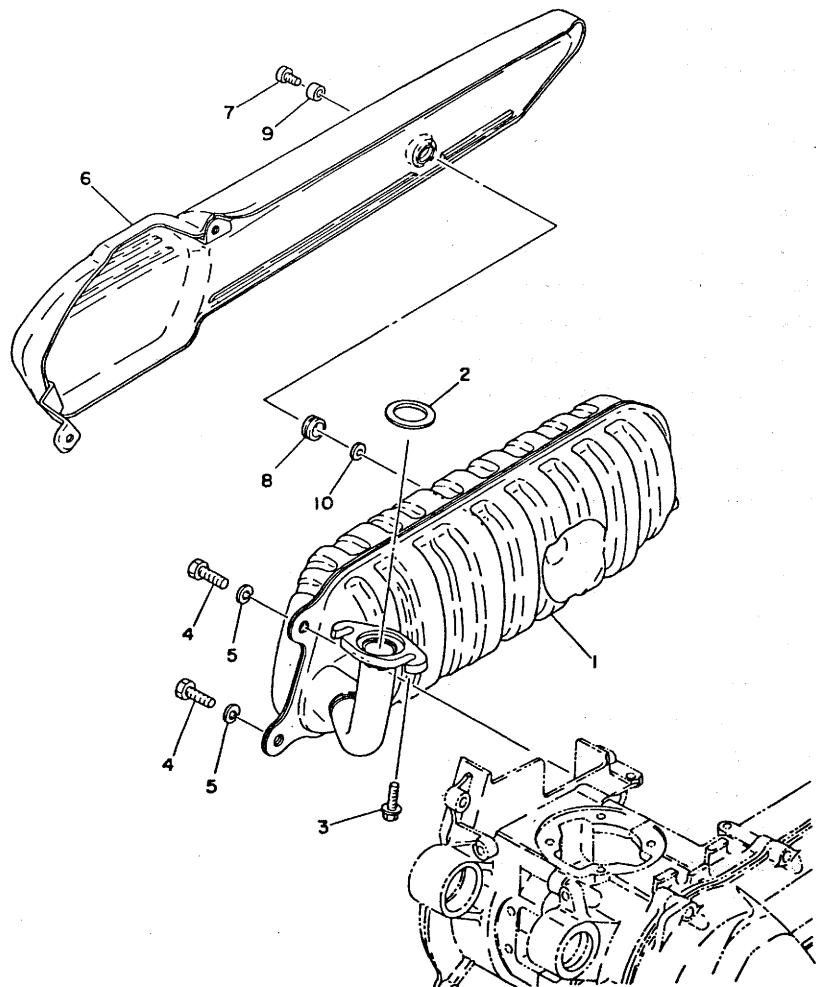
FIG. 7 CARBURETOR



REF. NO.	PART NO.	DESCRIPTION	Q'TY	REMARKS
23	2T4-14384-00	•GASKET, float chamber	1	
24	677-24444-00	•SCREW	1	
25	2T4-14191-01	•PLUG, drain	1	
26	2T4-14227-00	•GASKET	2	
27	98501-04012	•SCREW, Pan head	4	
28	2T4-14397-00	•O-RING	1	
29	2T4-14357-00	•WASHER, Plain	1	
30	98503-04010	•SCREW, Pan head	1	
31	2T4-14325-00	•SCREW, Pan head	2	
32	2T4-W0017-00	•DIAPHRAGM KIT	1	
33	2T4-W0018-00	•PLUNGER KIT	1	
34	90445-07419	HOSE	1	

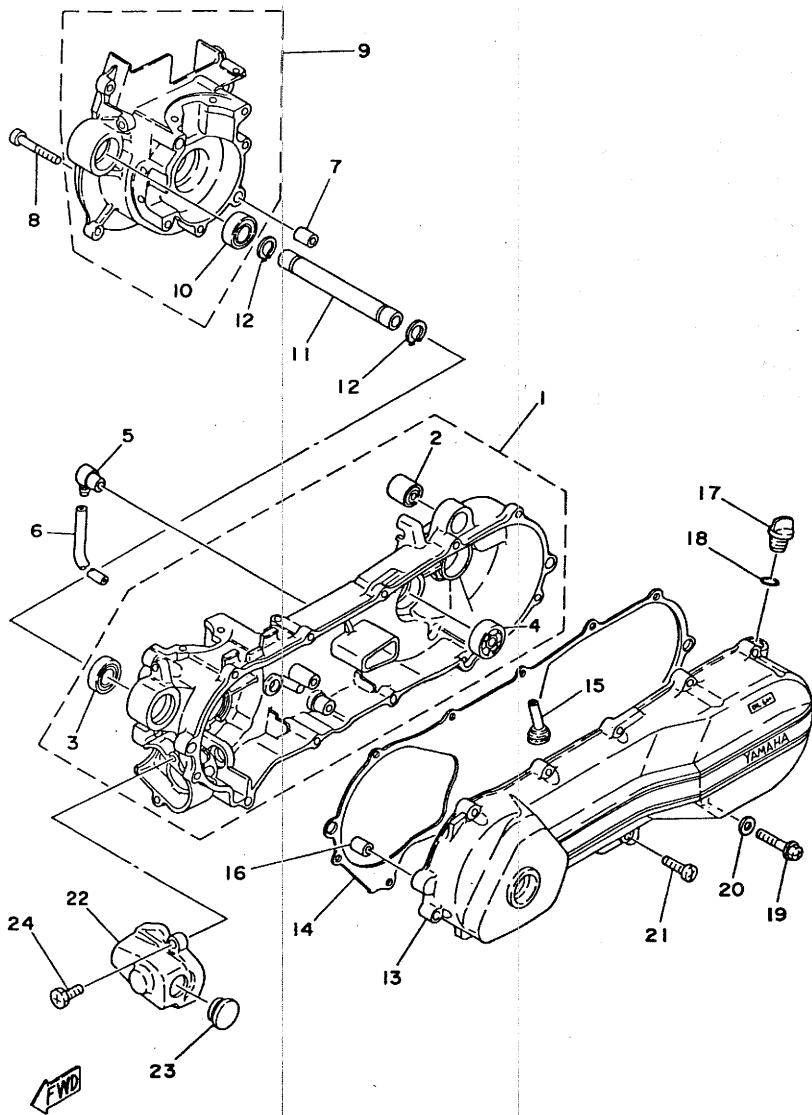
FIG. 8 EXHAUST

REF. NO.	PART NO.	DESCRIPTION	Q'TY	REMARKS
1	2T4-14610-00	EXHAUST PIPE ASSY 1	1	
2	2E9-14613-00	GASKET, exhaust Pipe	1	
3	90149-06113	SCREW	2	
4	97301-08020	BOLT	2	
5	92901-08100	WASHER, sPring	2	
6	2T4-14718-01-Y0	PROTECTOR, muffler 1	1	Pastel cream w-hite
7	98901-06012	SCREW, bind	1	
8	90480-12237	GROMMET	1	
9	90387-06023	COLLAR	1	
10	90430-06012	GASKET	1	



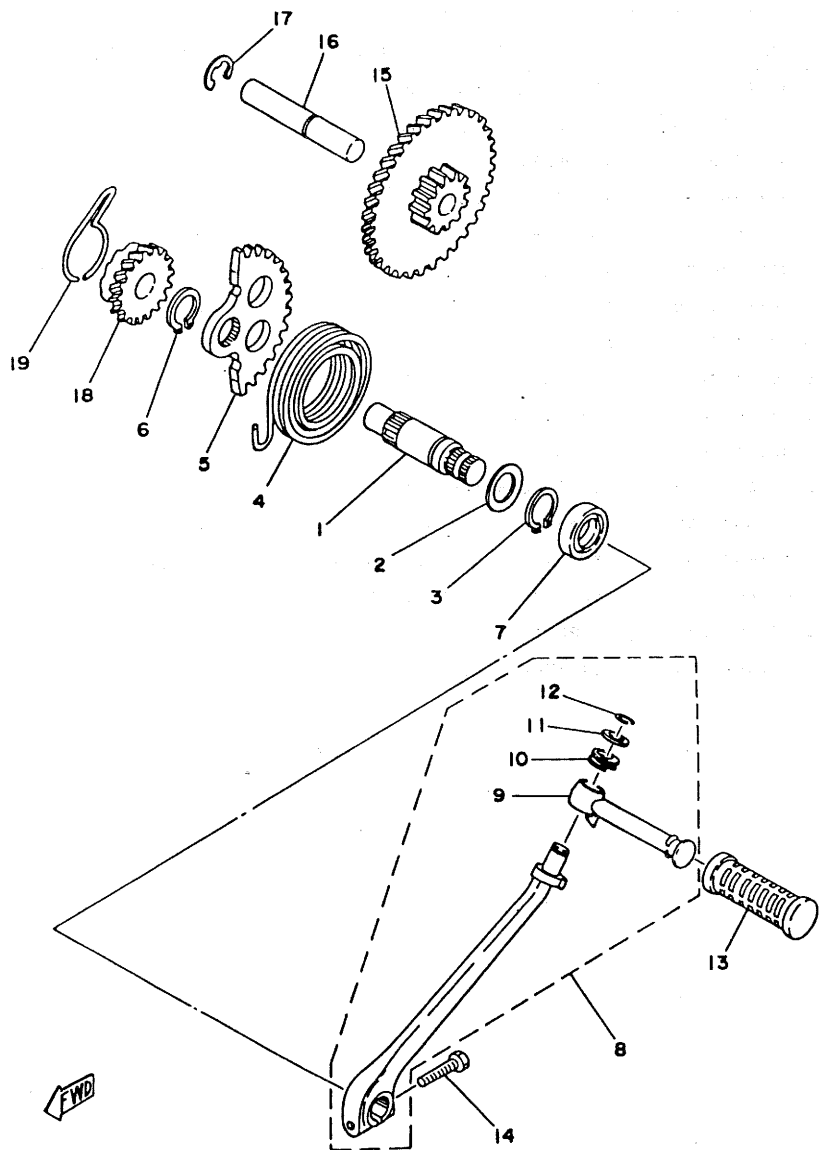
FWD

FIG. 9 CRANKCASE



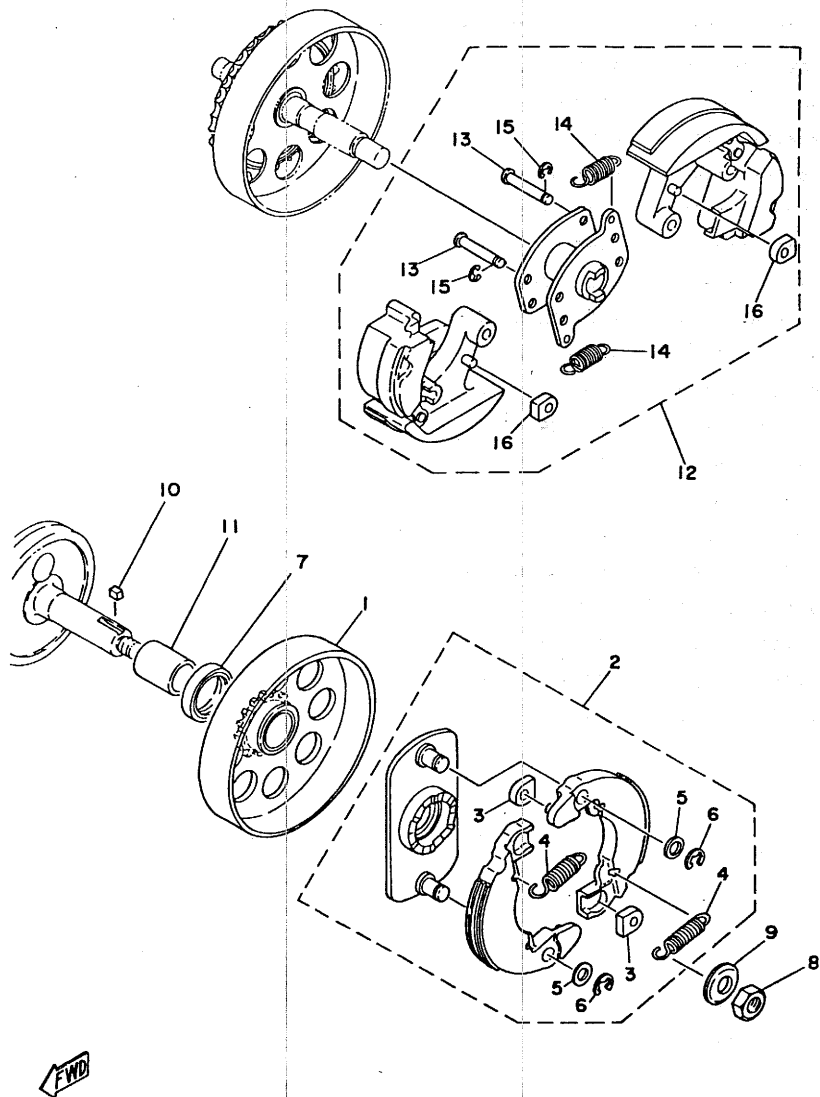
REF. NO.	PART NO.	DESCRIPTION	Q'TY	REMARKS
1	2T4-15110-00	CRANKCASE ASSY 1	1	
2	164-22216-00	.BUSH, rear shock absorber	1	
3	93306-00203	.BEARING (B6002)	1	
4	93306-20107	.BEARING (B6201)	1	
5	498-15371-00	BREATHER	1	
6	90446-07153	HOSE	1	
7	91830-22016	PIN, dowel	2	
8	92501-06045	SCREW, Pan head	6	
9	2T4-15120-00	CRANKCASE ASSY 2	1	
10	93306-00203	.BEARING (B6002)	1	
11	2T4-15317-00	SPACER, engine mount	1	
12	93440-15012	CIRCLIP	2	
13	2T4-15411-00-YO	COVER, crankcase 1	1	Pastel cream w- hite
14	2T4-15451-00	GASKET, crankcase cover	1	
15	2E9-15371-01	BREATHER	1	
16	91830-21014	PIN, dowel	2	
17	2T4-15363-00	PLUG, oil	1	
18	93210-14104	O-RING	1	
19	90105-08103	BOLT, washer based	1	
20	90430-08119	GASKET	1	
21	92501-06025	SCREW, Pan head	10	
22	2E9-15416-00	COVER, oil Pump	1	
23	90480-21038	GROMMET	1	
24	90153-06022	SCREW, hexagon	2	

FIG. 10 KICK STARTER



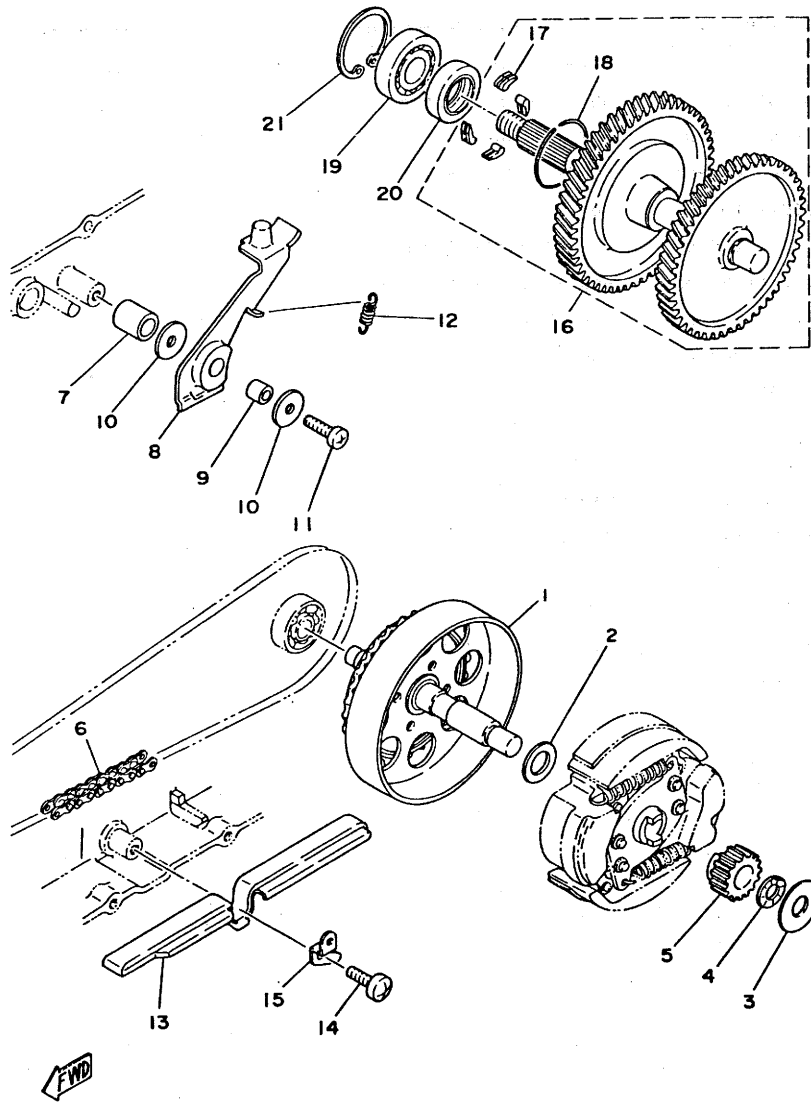
REF. NO.	PART NO.	DESCRIPTION	Q'TY	REMARKS
1	2E9-15661-00	AXLE, kick	1	
2	90201-18654	WASHER, Plate	1	
3	93410-18047	CIRCLIP	1	
4	90508-32356	SPRING, torsion	1	
5	2E9-15641-00	GEAR, kick (47T)	1	
6	93410-14016	CIRCLIP	1	
7	93102-18091	OIL SEAL	1	
8	4K5-15610-00	KICK CRANK ASSY	1	
9	4K5-15612-00	•LEVER, kick	1	
10	90504-18005	•SPRING, compression	1	
11	90209-10108	•WASHER	1	
12	93440-10028	•CIRCLIP	1	
13	2T4-15618-00	COVER, kick lever	1	
14	97311-06025	BOLT	1	
15	2E9-15650-00	IDLE GEAR ASSY (52T/15T)	1	
16	2E9-15659-00	SHAFT	1	
17	93430-10016	CIRCLIP	1	
18	2E9-15631-00	GEAR, kick Pinion (23T)	1	
19	2E9-15673-00	CLIP	1	

FIG. 11 CLUTCH



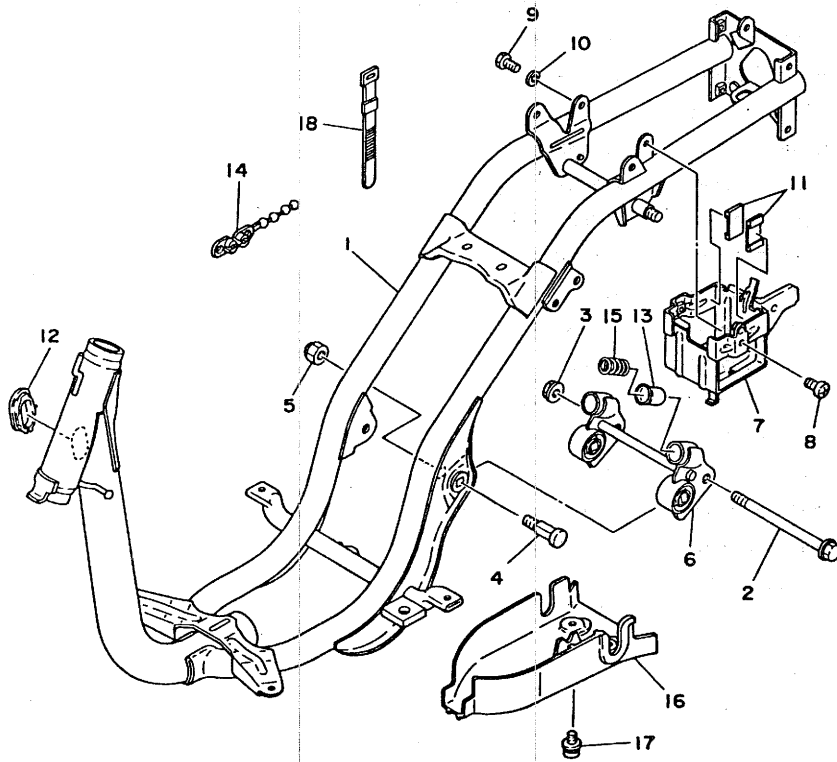
REF. NO.	PART NO.	DESCRIPTION	Q'TY	REMARKS
1	2T4-16611-00	CLUTCH HOUSING COMP.	1	
2	2E9-16620-00	CLUTCH CARRIER ASSY	1	
3	2E9-16629-00	•DAMPER, clutch weight	2	
4	90506-20165	•SPRING, tension	2	
5	807-14617-00	•WASHER	2	
6	93430-07012	•CIRCLIP	2	
7	2T4-16314-00	RING	1	
8	90170-10219	NUT	1	
9	90208-10012	WASHER, conical spring	1	
10	90282-05031	KEY, straight	1	
11	90387-16680	COLLAR	1	
12	2T4-16630-00	CLUTCH CARRIER ASSY	1	
13	2T4-16673-00	•SHAFT, clutch weight 2	4	
14	2T4-16627-01	•SPRING, clutch weight 2	2	STD
	2T4-16627-10	•SPRING, clutch weight 2	2	AP
15	93430-04003	•CIRCLIP	4	
16	2T4-16629-00	•DAMPER, clutch weight	2	

FIG. 12 TRANSMISSION



REF. NO.	PART NO.	DESCRIPTION	Q'TY	REMARKS
1	2T4-17410-00	MAIN AXLE ASSY (33T)	1	
2	90201-14691	WASHER, Plate	1	
3	90201-12704	WASHER, Plate	1	
4	90208-12027	WASHER, conical sPring	1	
5	2T4-17121-01	GEAR, 2nd Pinion (15T)	1	
6	94580-21080	CHAIN, drive (DID270H 80L)	1	
7	90387-12695	COLLAR	1	
8	2T4-12242-02	PLATE, tensioner	1	
9	90387-06694	COLLAR	1	
10	90201-06655	WASHER, Plate	2	
11	92501-06020	SCREW, Pan head	1	
12	2T4-17497-03	SPRING	1	
13	2T4-17467-00	GUIDE, chain 1	1	
14	92501-06012	SCREW, Pan head	1	
15	2T4-17477-00	HOLDER, sPring	1	
16	2T4-17420-00	DRIVE AXLE ASSY	1	
17	384-15635-00	•PAWL, kick	4	
18	2T4-15637-00	•SPRING, Pawl	1	
19	93306-20203	BEARING (B6202RS)	1	
20	93102-20070	OIL SEAL	1	
21	93420-35003	CIRCLIP	1	

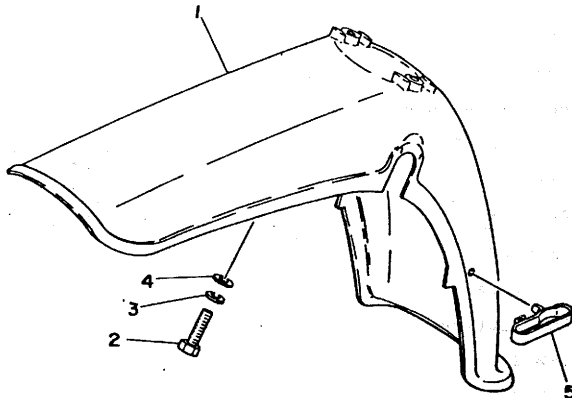
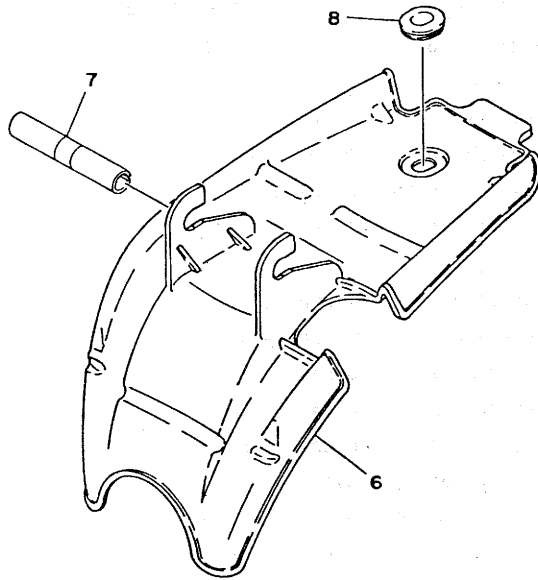
FIG. 13 FRAME.



REF. NO.	PART NO.	DESCRIPTION	Q'TY	REMARKS
1	2T4-21110-00-6A	FRAME COMP.	1	radical grey
2	90105-10117	BOLT, washer based	1	
3	95701-10100	NUT, flange	1	
4	2T4-21481-01	BOLT, engine mounting	2	
5	95611-10100	NUT, u	2	
6	2T4-21410-01	ENGINE BRACKET COMP.	1	
7	2T4-21393-02	BRACKET, battery box	1	
8	92501-06008	SCREW, Pan head	1	
9	97301-06014	BOLT	2	
10	92901-06100	WASHER, spring	2	
11	2T4-82121-00	PAD, battery	2	
12	2T4-26288-01	GROMMET, cable	1	
13	2T4-2139X-00	DAMPER	2	
14	90464-20031	CLAMP	1	
15	90501-29517	SPRING, compression	2	
16	2T4-21471-03	PROTECTOR, engine	1	
17	90119-06019	BOLT, with washer	2	
18	437-83936-10	BAND, switch cord	3	

← FWD

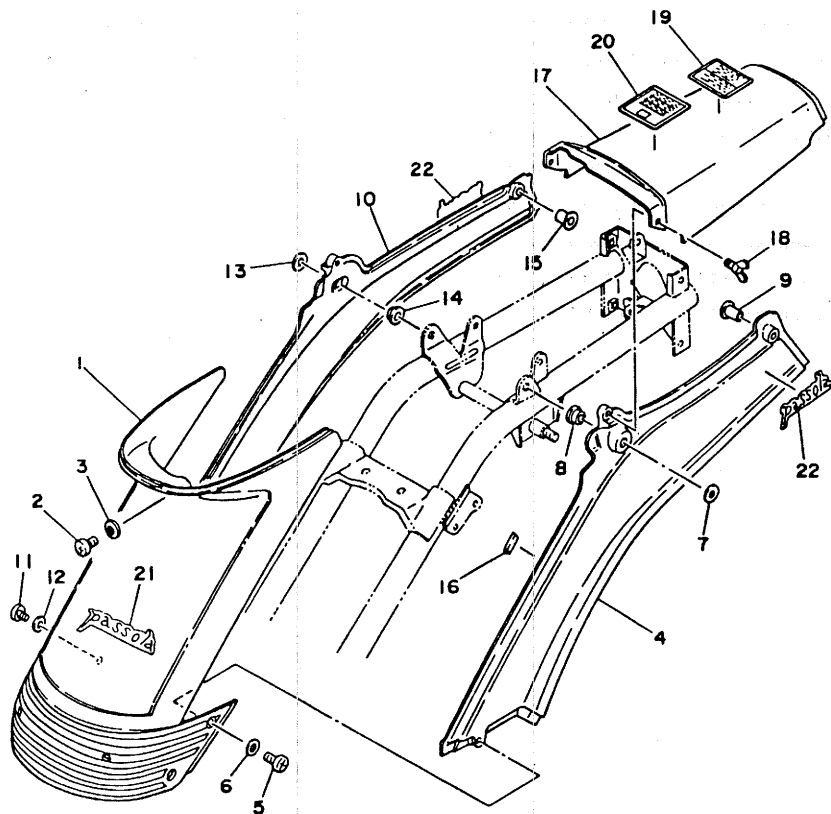
FIG. 14 FRONT FENDER•REAR FENDER



REF. NO.	PART NO.	DESCRIPTION	Q'TY	REMARKS
1	2T4-21511-01-L3	FENDER, front	1	UR competition light green
	2T4-21511-01-26	FENDER, front	1	UR competition yellow
	2T4-21511-01-3G	FENDER, front	1	UR milky brown
2	97301-06025	BOLT	2	
3	92901-06100	WASHER, spring	2	
4	90201-06050	WASHER, plate	2	
5	2T4-21518-01	HOLDER, cable	1	
6	2T4-21629-00	GUARD, mud	1	
7	2T4-24183-00	DAMPER, locating 3	1	
8	90480-01141	GROMMET	1	

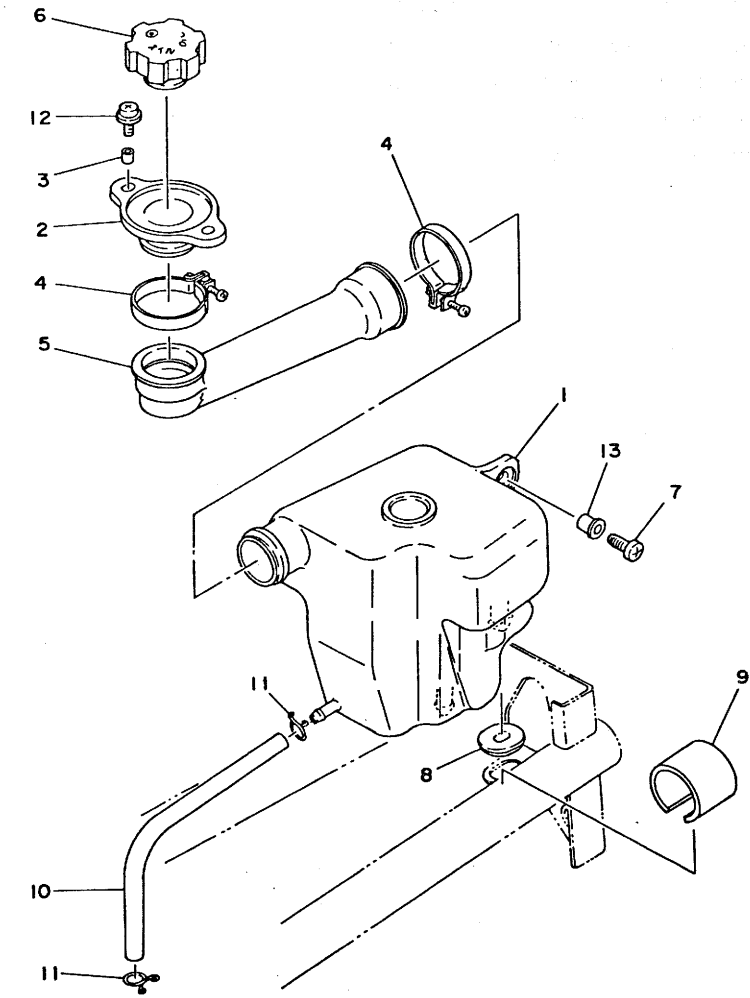
FWD

FIG. 15 SIDE COVER



REF. NO.	PART NO.	DESCRIPTION	Q'TY	REMARKS
1	2T4-21710-00	SIDE COVER ASSY	1	
2	98501-05010	SCREW, Pan head	1	
3	92901-05600	WASHER, Plate	1	
4	2T4-21721-00-L3	COVER, side 2	1	UR comPetition light Green
	2T4-21721-00-26	COVER, side 2	1	UR comPetition yellow
	2T4-21721-00-3G	COVER, side 2	1	UR milky brown
5	98501-05016	SCREW, Pan head	1	
6	92901-05600	WASHER, Plate	1	
7	92901-08200	WASHER, Plain	1	
8	2T4-21748-02	COLLAR	1	
9	2T4-21749-02	COLLAR	1	
10	2T4-21741-00-L3	COVER, side 4	1	UR comPetition light Green
	2T4-21741-00-26	COVER, side 4	1	UR comPetition yellow
	2T4-21741-00-3G	COVER, side 4	1	UR milky brown
11	98501-05016	SCREW, Pan head	1	
12	92901-05600	WASHER, Plate	1	
13	92901-08200	WASHER, Plain	1	
14	2T4-21748-02	COLLAR	1	
15	2T4-21749-02	COLLAR	1	
16	2T4-21717-00	DAMPER, side cover	4	
17	2T4-21731-00-L3	COVER, side 3	1	UR comPetition light Green
	2T4-21731-00-26	COVER, side 3	1	UR comPetition yellow
	2T4-21731-00-3G	COVER, side 3	1	UR milky brown
18	90122-05010	BOLT, wing	2	
19	4F1-21668-00	LABEL, tire	1	
20	4F1-2415E-00	LABEL, caution	1	
21	2T4-21782-00	EMBLEM 2	1	
22	2T4-21783-00	EMBLEM 3	2	

FIG. 16 OIL TANK



REF. NO.	PART NO.	DESCRIPTION	Q'TY	REMARKS
1	2T4-21751-01	TANK, oil	1	
2	2T4-21752-02	TUBE, filler 1	1	
3	90387-05679	COLLAR	2	
4	90460-37130	CLAMP, hose	2	
5	2T4-21753-01	BOSS, connector	1	
6	3L5-21770-01	OIL TANK CAP ASSY	1	
7	90167-06003	SCREW, tapping	1	
8	90480-01247	GROMMET	1	
9	2E9-24181-00	DAMPER, locatin& 1	2	
10	90445-09228	HOSE	1	
11	90467-08003	CLIP	2	
12	90159-05023	SCREW, with washer	2	
13	802-83923-00	COLLAR, lever 2	1	

FIG. 17 REAR SUSPENSION

REF. NO.	PART NO.	DESCRIPTION	Q'TY	REMARKS
1	2T4-22210-01-93	SHOCK ABSORBER ASSY, rear	1	chrome-Plated
2	90105-08121	BOLT, washer based	1	
3	95301-10600	NUT	1	
4	90201-10140	WASHER, Plate	1	

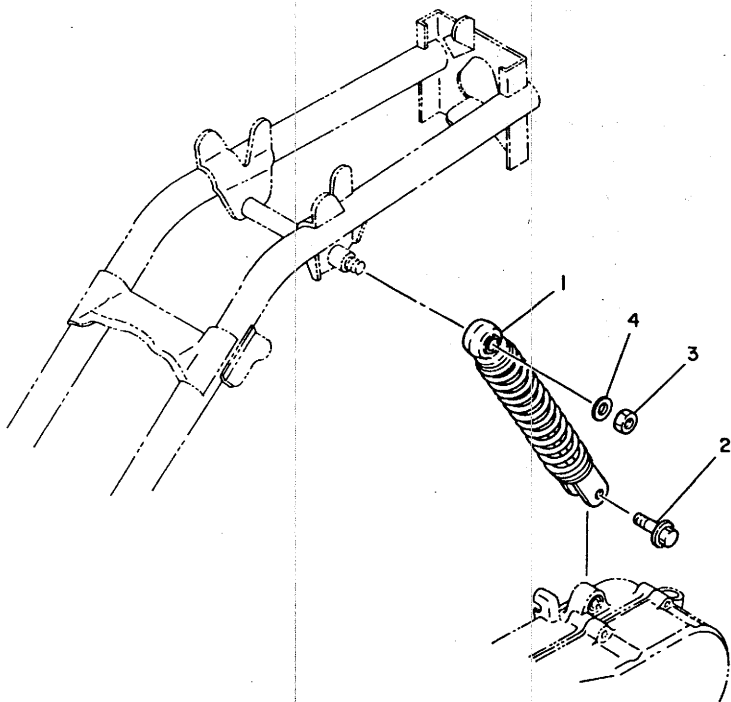
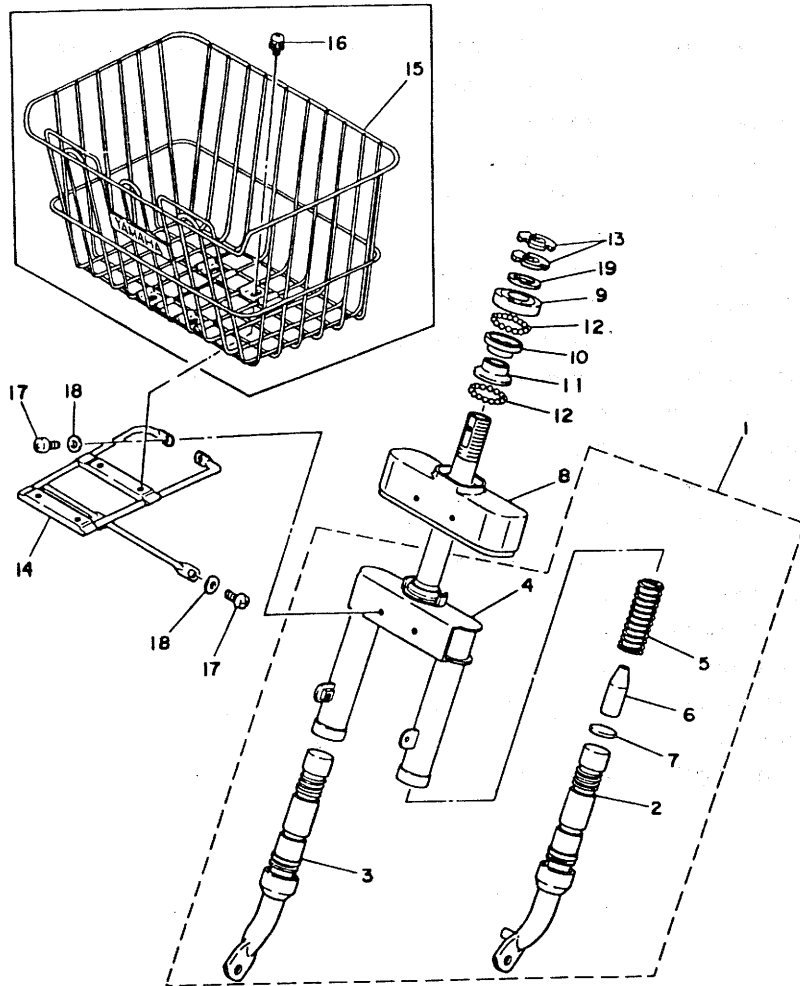


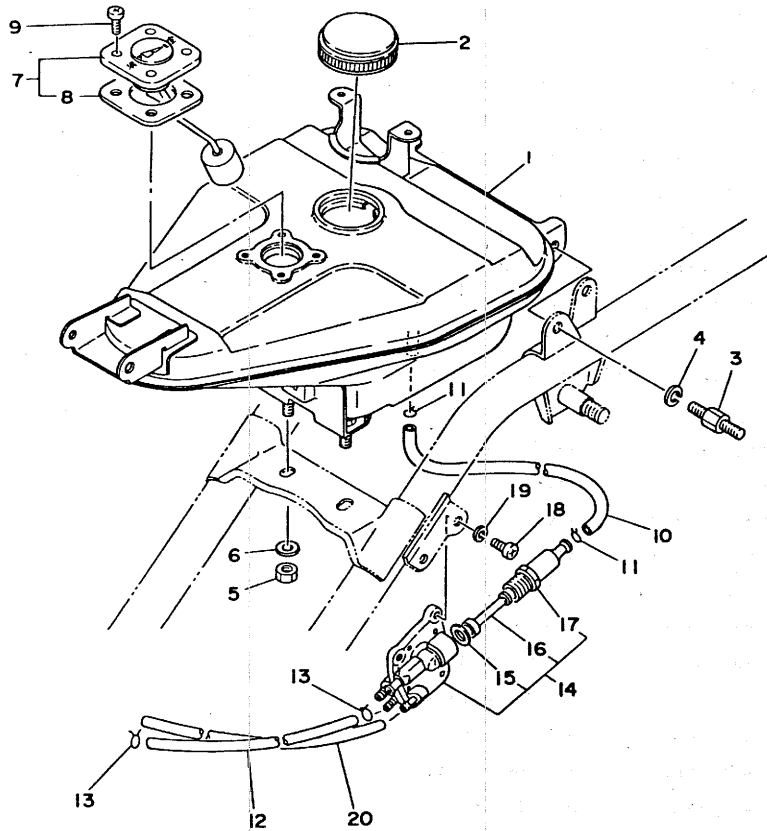
FIG. 18 FRONT FORK



REF. NO.	PART NO.	DESCRIPTION	Q'TY	REMARKS
1	2T4-23100-00-L3	FRONT FORK ASSY	1	UR competition light green
	2T4-23100-00-26	FRONT FORK ASSY	1	UR competition yellow
	2T4-23100-00-3G	FRONT FORK ASSY	1	UR milky brown
2	2T4-23110-00-93	.INNER TUBE COMP.1	1	chrome-Plated
3	2T4-23120-00-93	.INNER TUBE COMP.2	1	chrome-Plated
4	2T4-23340-00-L3	.UNDER BRACKET COMP.	1	UR competition light green
	2T4-23340-00-26	.UNDER BRACKET COMP.	1	UR competition yellow
	2T4-23340-00-3G	.UNDER BRACKET COMP.	1	UR milky brown
5	2T4-23141-02	.SPRING, front fork	2	
6	2T4-23195-00	.RUBBER	1	
7	2E9-23143-00	.SEAT, sPring lower	2	
8	2T4-23311-00-L3	PANEL, outer 1	1	UR competition light green
	2T4-23311-00-26	PANEL, outer 1	1	UR competition yellow
	2T4-23311-00-3G	PANEL, outer 1	1	UR milky brown
9	2E9-23411-01	RACE, ball 1	1	
10	2E9-23412-00	RACE, ball 2	1	
11	2E9-23413-01	RACE, ball 3	1	
12	93505-32002	BALL	52	
13	2E9-23454-00	NUT, fitting 2	2	
14	3L4-24841-00	CARRIER, front	1	
15	90890-55140.	FRONT BASKET	1	AP
16	90159-05018	SCREW, with washer	4	
17	92501-06012	SCREW, Pan head	4	
18	92901-06600	WASHER, Plate	4	
19	2T4-23418-01	WASHER, sPecial	1	



FIG. 19 FUEL TANK



REF. NO.	PART NO.	DESCRIPTION	Q'TY	REMARKS
1	2T4-24110-02-Y0	FUEL TANK COMP.	1	Pastel cream white
2	296-24610-00	CAP ASSY	1	
3	90116-08281	BOLT, stud	2	
4	92901-08100	WASHER, sPring	2	
5	95701-08100	NUT, flange	2	
6	90201-08100	WASHER, Plate	2	
7	2T4-24260-01	FUEL METER ASSY	1	
8	3L5-24268-00	.GASKET, fuel meter	1	
9	90154-05004	SCREW, binding	4	
10	2T4-24311-00	PIPE, fuel 1	1	
11	90467-08003	CLIP	2	
12	90445-09304	HOSE	1	
13	90467-08003	CLIP	2	
14	2T4-24500-02	FUEL COCK ASSY 1	1	
15	2T4-24564-00	.GASKET	1	
16	2T4-24514-01	.NET, filter 1	1	
17	2T4-24521-00	.CUP, filter	1	
18	92501-06012	SCREW, Pan head	2	
19	92901-06100	WASHER, sPring	2	
20	90445-07387	HOSE	1	

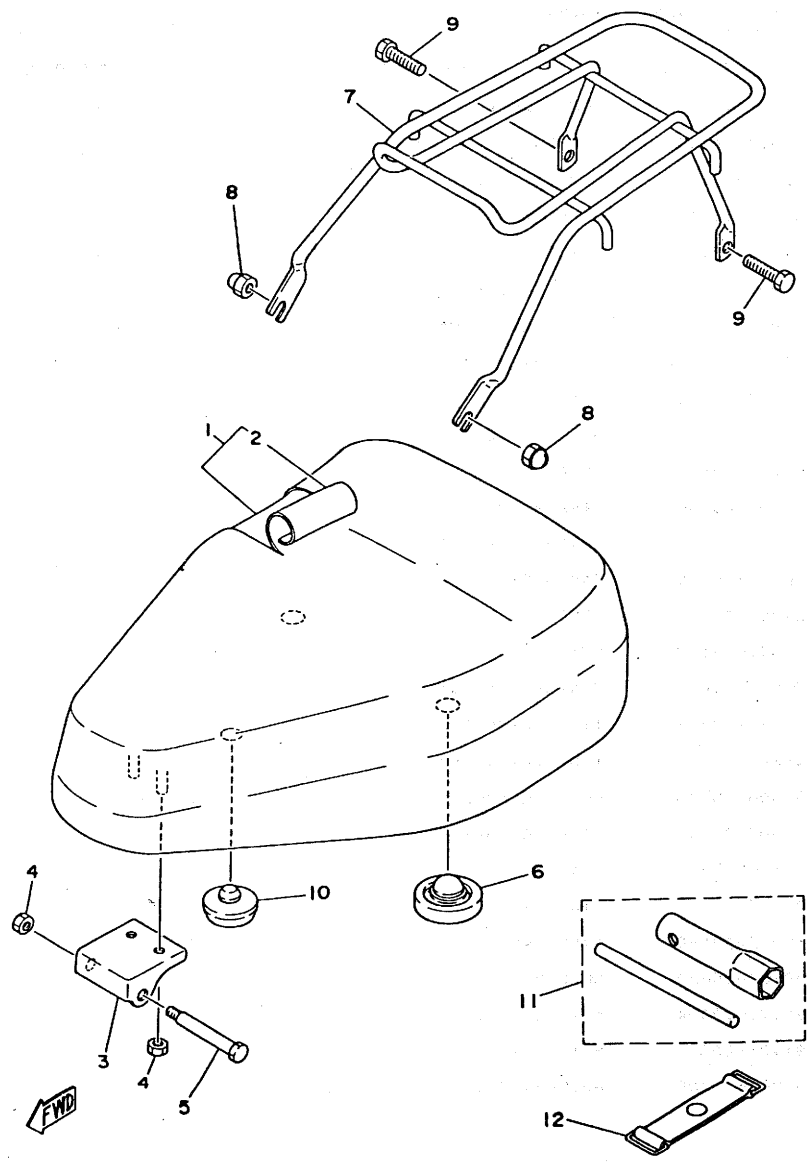
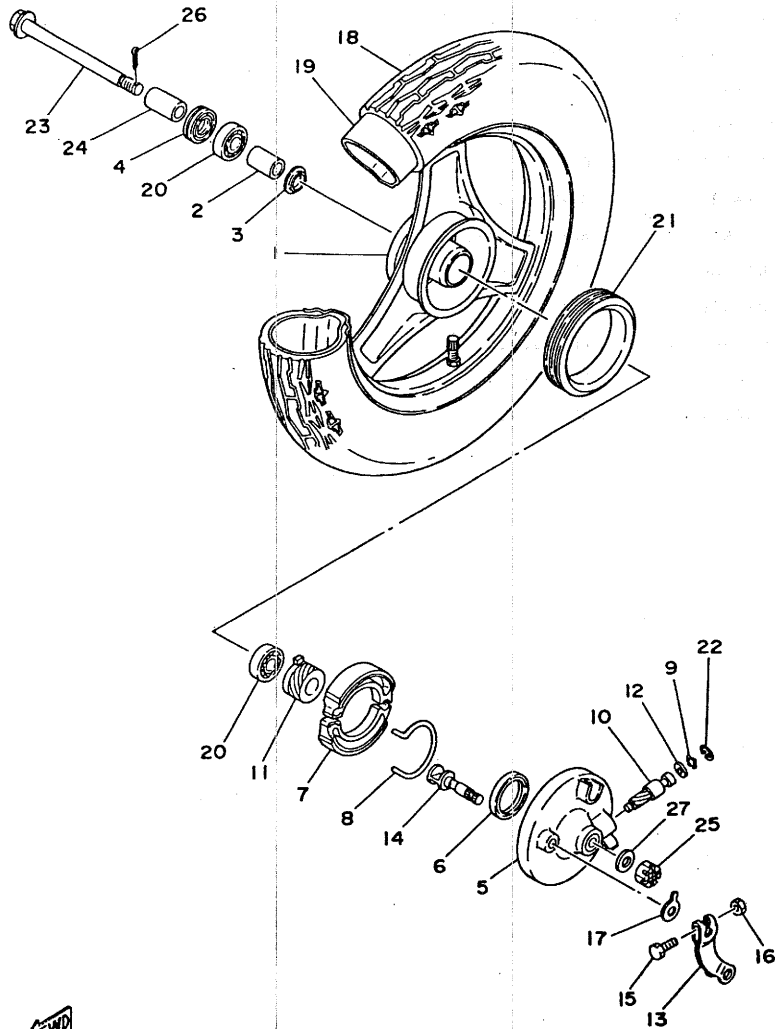


FIG. 20 SEAT

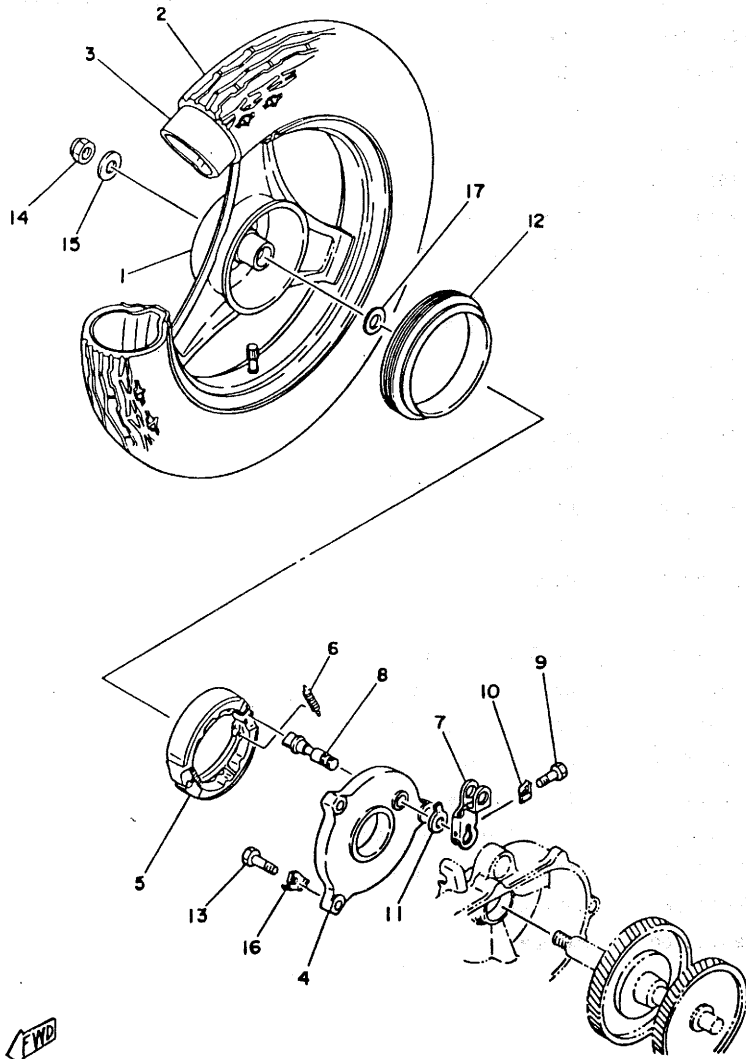
REF. NO.	PART NO.	DESCRIPTION	Q'TY	REMARKS
1	2T4-W2471-01	SINGLE SEAT ASSY	1	
2	2T4-24711-01	COVER, single seat	1	
3	2T4-24726-00	HINGE, seat	1	
4	95701-06100	NUT, flange	3	
5	90109-06504	BOLT	1	
6	296-24723-00	DAMPER, seat	2	
7	2T4-24842-01	CARRIER, rear	1	
8	95301-08800	NUT, crown	2	
9	90109-08510	BOLT	2	
10	1L9-24741-00	PAD, seat	1	
11	2T4-28100-11	TOOL KIT	1	
12	116-82131-00	BAND, battery	1	

FIG. 21 FRONT WHEEL



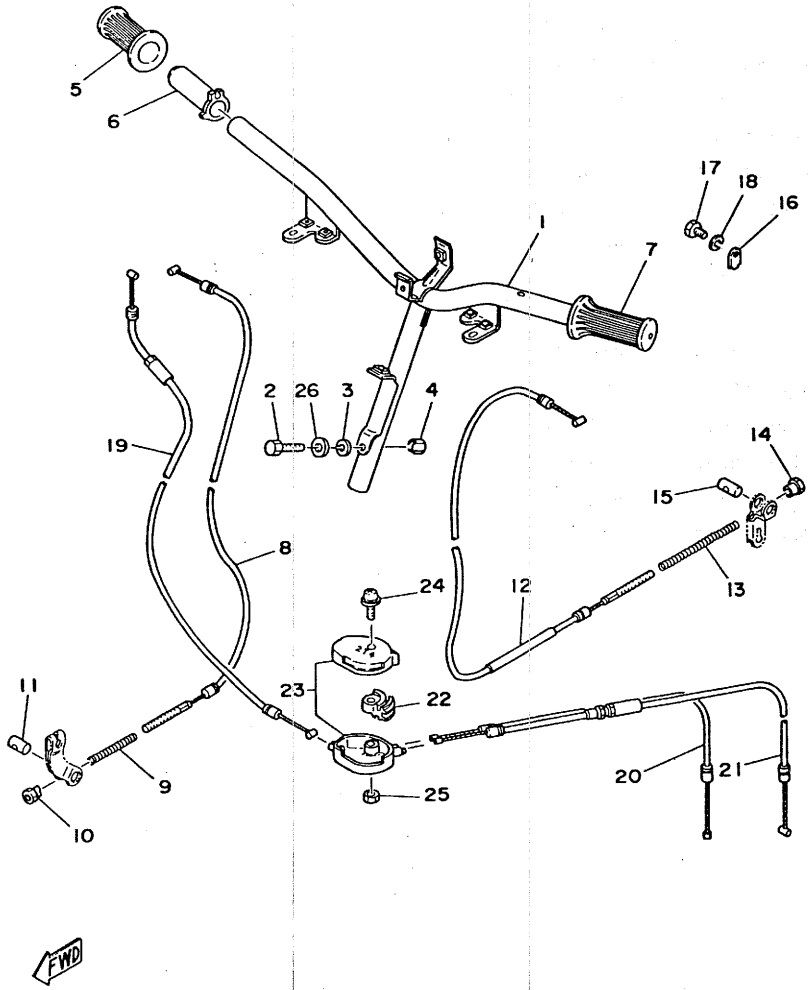
REF. NO.	PART NO.	DESCRIPTION	Q'TY	REMARKS
1	2T4-25180-00-35	FRONT WHEEL COMP.	1	silver
2	90560-10173	SPACER	1	
3	2E9-25116-00	FLANGE, sPacer 2	1	
4	93106-17015	OIL SEAL	1	
5	2T4-25121-00-35	PLATE, brake shoe	1	silver
6	2E9-25129-00	SEAL, Plate dust	1	
7	2E9-25130-00	BRAKE SHOE COMP.	2	
8	2E9-25133-00	SPRING, return	1	
9	2T4-25137-00	RING, stoP	1	
10	2E9-25138-00	GEAR, meter	1	
11	2E9-25135-00	GEAR, drive (14T)	1	
12	90201-06656	WASHER, Plate	1	
13	2T4-25155-00	LEVER, camshaft 1	1	
14	2E9-25151-01	CAMSHAFT	1	
15	97301-05020	BOLT	1	
16	95301-05600	NUT	1	
17	3L8-2513A-00	PLATE, indicator	1	
18	94127-10297	TIRE (2.75-10)	1	
19	94225-10112	TUBE (2.50-10)	1	
20	93306-20005	BEARING (B6200)	2	UR
	93306-20006	BEARING (B6200)	2	UR
21	2T4-25185-00	RING 1	1	
22	2E9-25137-01	RING, stoP	1	
23	2E9-25181-00	AXLE, wheel	1	
24	90387-10620	COLLAR	1	
25	90171-10004	NUT, castle	1	
26	91401-20020	PIN, cotter	1	
27	92901-10200	WASHER, Plain	1	

FIG. 22 REAR WHEEL



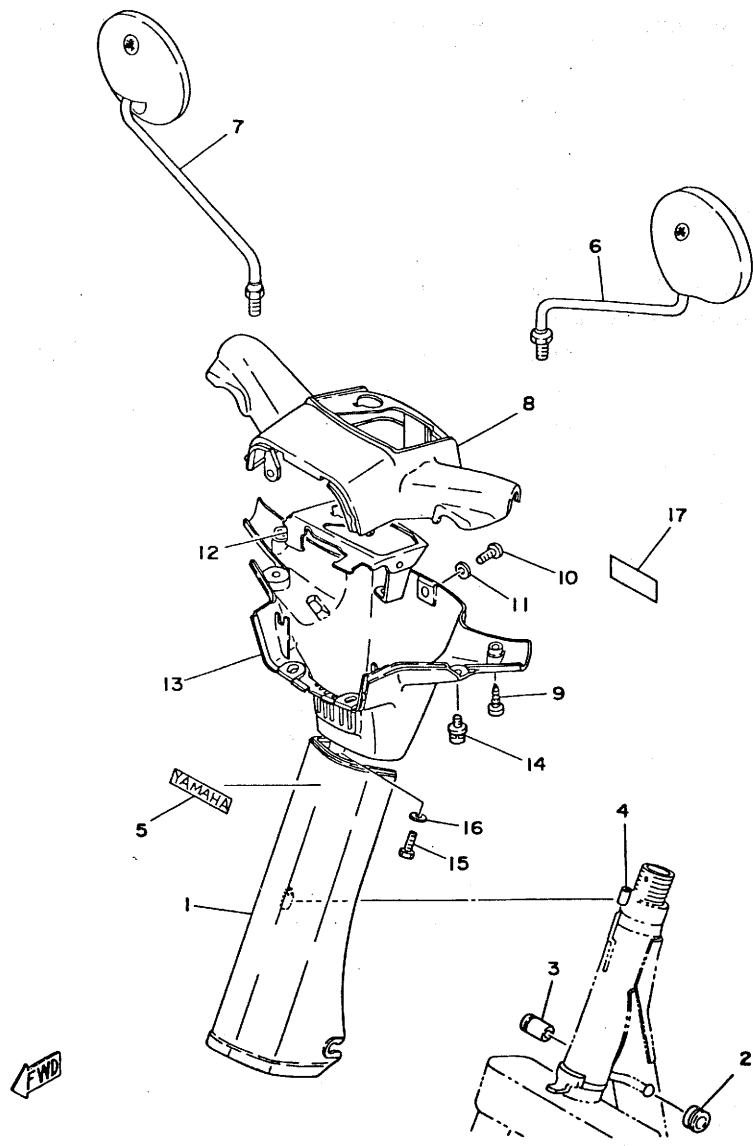
REF. NO.	PART NO.	DESCRIPTION	Q'TY	REMARKS
1	2T4-25390-00-35	REAR WHEEL COMP.	1	silver
2	94127-10297	TIRE (2.75-10)	1	
3	94225-10112	TUBE (2.50-10)	1	
4	2T4-25321-00-35	PLATE, brake shoe	1	silver
5	451-25130-00	BRAKE SHOE COMP.	2	
6	90506-14081	SPRING, tension	2	
7	2T4-25355-01	LEVER, camshaft	1	
8	451-25151-00	CAMSHAFT	1	
9	90101-05396	BOLT	1	
10	2E9-25412-00	WASHER	1	
11	3L8-2513A-00	PLATE, indicator	1	
12	2T4-25336-00	RING 2	1	
13	97301-08025	BOLT	3	
14	90185-12046	NUT, self-locking	1	
15	90201-12699	WASHER, Plate	1	
16	2T4-25412-00	WASHER	3	
17	90201-15700	WASHER, Plate	1	

FIG. 23 HANDLEBAR·CABLE



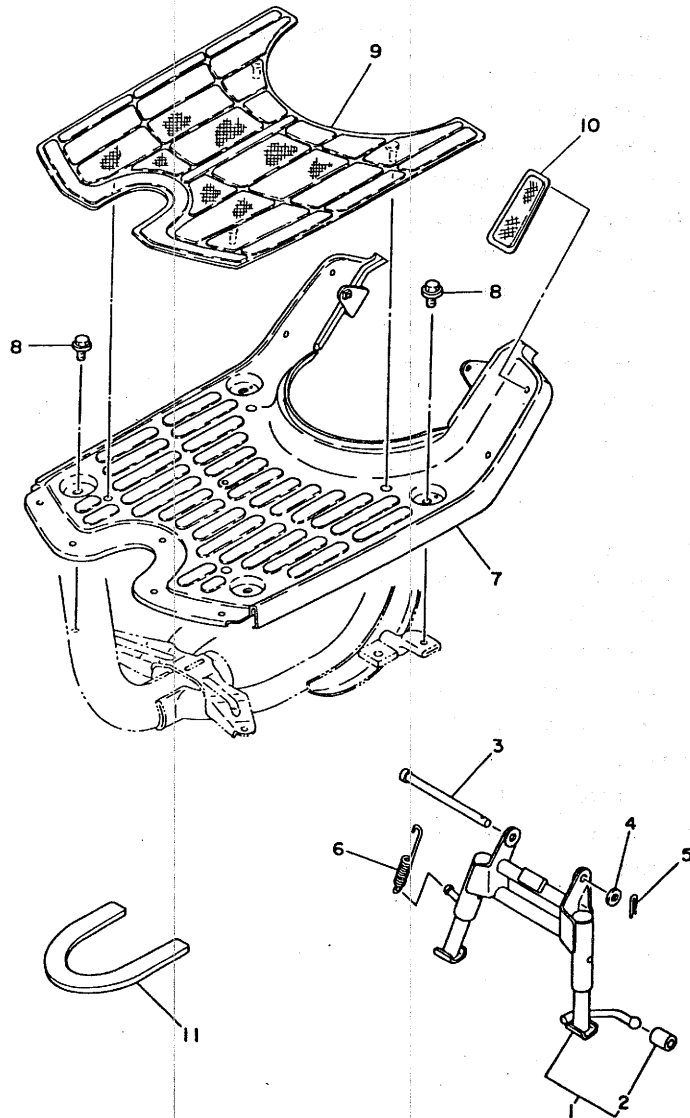
REF. NO.	PART NO.	DESCRIPTION	Q'TY	REMARKS
1	2T4-26110-01	HANDLE COMP.	1	
2	90109-08507	BOLT	1	
3	92901-08100	WASHER, sPring	1	
4	90179-08258	NUT	1	
5	2E9-26242-00	GRIP (R.H)	1	
6	2E9-26243-00	TUBE, throttle guide	1	
7	2E9-26241-00	GRIP (L.H)	1	
8	2T4-26341-00	CABLE, brake	1	
9	90501-10513	SPRING, comPression	1	
10	90179-06176	NUT	1	
11	90249-12008	PIN	1	
12	2T4-26351-01	CABLE, brake	1	
13	90501-10532	SPRING, comPression	1	
14	90179-06176	NUT	1	
15	90249-12008	PIN	1	
16	2E9-26393-00	HOLDER	1	
17	97301-06012	BOLT	1	
18	92901-06100	WASHER, sPring	1	
19	2T4-26311-01	CABLE, throttle 1	1	
20	2T4-26312-00	CABLE, throttle 2	1	
21	2T4-26321-00	CABLE, Pump	1	
22	2E9-26263-01	PIECE, connectinG	1	
23	2T4-26270-00	CABLE CONNECTOR CAP ASSY	1	
24	90159-05029	SCREW, with washer	1	
25	90176-05024	NUT, crown	1	
26	2E9-26129-00	WASHER	1	

FIG. 24 COWLING



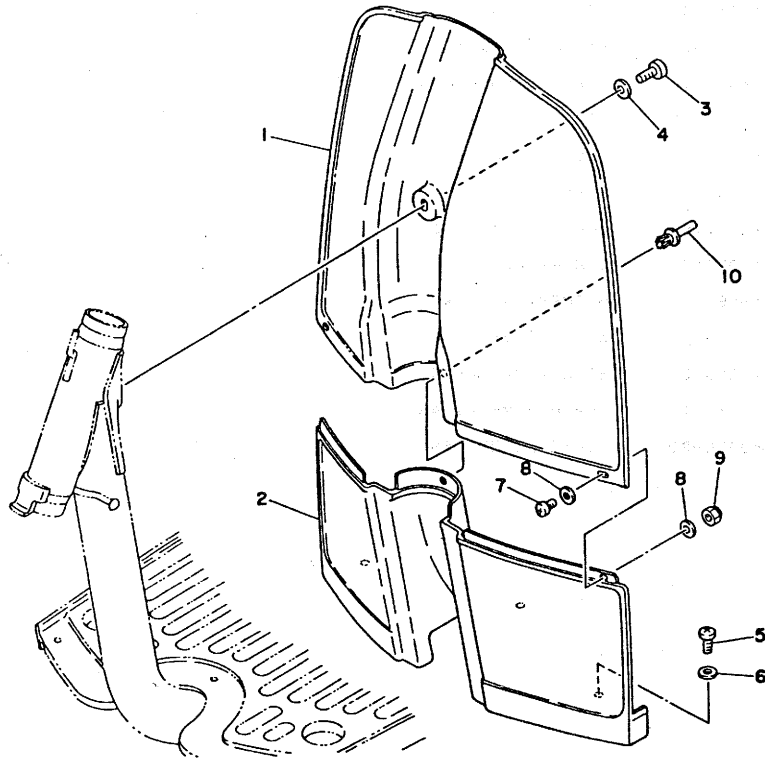
REF. NO.	PART NO.	DESCRIPTION	Q'TY	REMARKS
1	2T4-23391-00-L3	PANEL, front	1	UR competition light green
	2T4-23391-00-26	PANEL, front	1	UR competition yellow
	2T4-23391-00-3G	PANEL, front	1	UR milky brown
2	90480-12053	GROMMET	1	
3	90480-12248	GROMMET	1	
4	90445-07398	HOSE	1	
5	2T4-21781-00	EMBLEM 1	1	
6	3L6-26290-00	MIRROR ASSY	1	
7	3L6-26290-10	MIRROR ASSY	1	
8	2T4-26213-00-L3	COVER, upper	1	UR competition light green
	2T4-26213-00-26	COVER, upper	1	UR competition yellow
	2T4-26213-00-3G	COVER, upper	1	UR milky brown
9	97701-40516	SCREW, Panhead tapping	2	
10	98903-05016	SCREW, blind	1	
11	92901-05200	WASHER, Plain	1	
12	2T4-83519-01	BRACKET, meter	1	
13	2T4-26215-00-L3	COVER, lower	1	UR competition light green
	2T4-26215-00-26	COVER, lower	1	UR competition yellow
	2T4-26215-00-3G	COVER, lower	1	UR milky brown
14	90159-05024	SCREW, with washer	2	
15	97306-06020	BOLT	1	
16	90201-06050	WASHER, Plate	1	
17	4F0-22259-00	LABEL, warning	1	

FIG. 25 STAND.FOOTREST



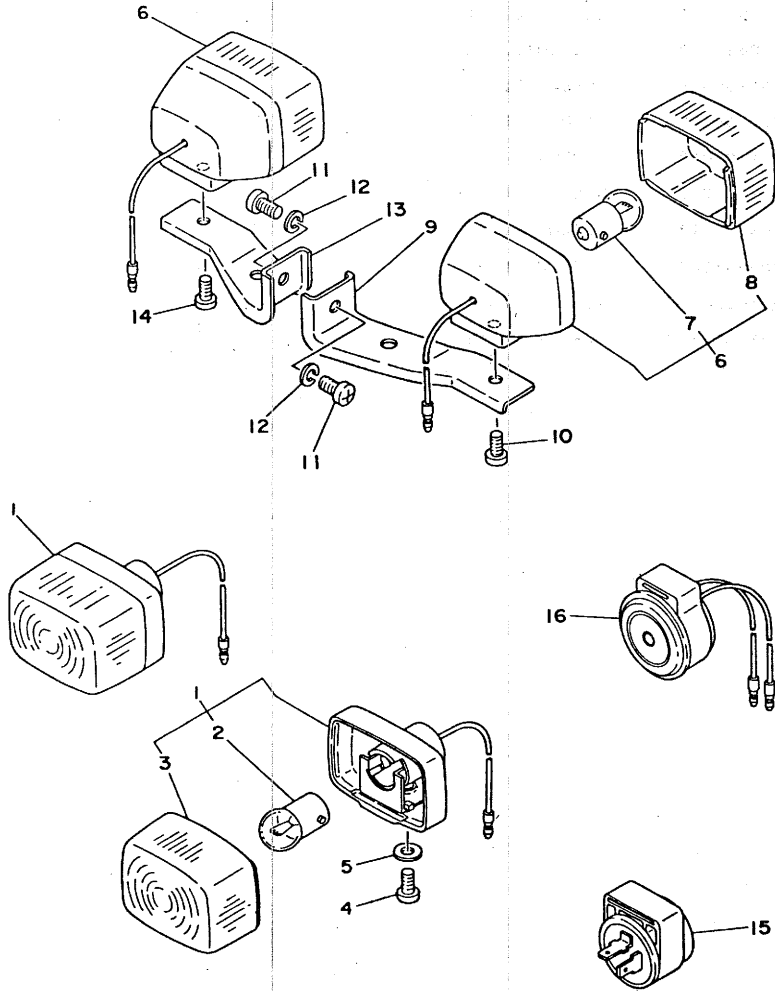
REF. NO.	PART NO.	DESCRIPTION	Q'TY	REMARKS
1	2T4-27100-03	MAIN STAND ASSY	1	
2	278-27314-00	•STOPPER	1	
3	91701-08120	PIN, clevis	1	
4	92901-08600	WASHER, Plate	1	
5	90468-12006	CLIP	1	
6	2T4-27116-01	SPRING, main stand	1	
7	2T4-27481-00-L3	BOARD, footrest	1	UR comPetition light Green
	2T4-27481-00-26	BOARD, footrest	1	UR comPetition yellow
	2T4-27481-00-3G	BOARD, footrest	1	UR milky brown
8	90119-06018	BOLT, with washer	4	
9	2T4-27483-01	MAT 1	1	
10	2T4-27484-00	MAT 2	2	
11	2T4-27485-00	SEAL	1	

FIG. 26 LEG SHIELD



REF. NO.	PART NO.	DESCRIPTION	Q'TY	REMARKS
1	2T4-28311-01	LEG SHIELD 1	1	
2	2T4-28312-01	LEG SHIELD 2	1	
3	92501-06015	SCREW, Pan head	1	
4	90201-06050	WASHER, Plate	1	
5	98901-06012	SCREW, bind	3	
6	90201-06050	WASHER, Plate	3	
7	98903-05012	SCREW, bind	2	
8	92903-05600	WASHER, Plate	4	
9	95304-05800	NUT, crown	2	
10	2T4-28352-00	SCREW, fitting	1	

FIG. 27 FLASHER LIGHT

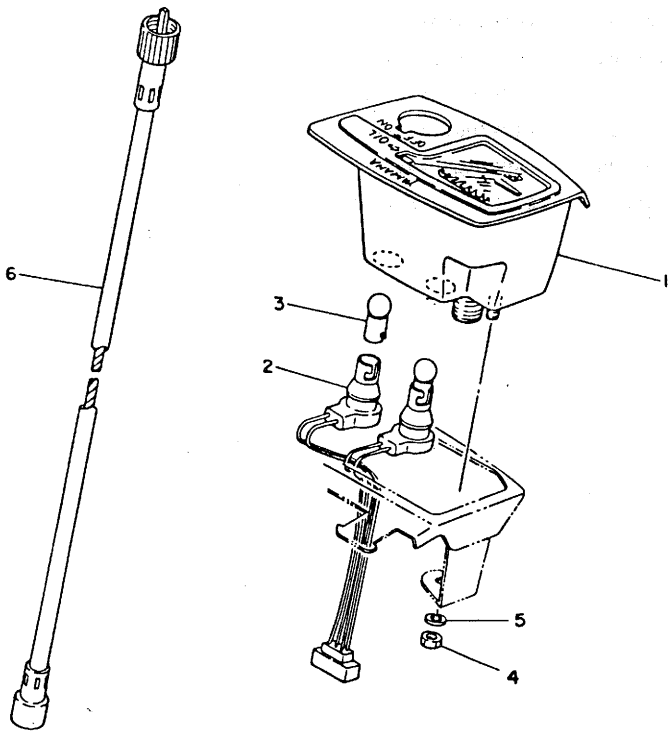


REF. NO.	PART NO.	DESCRIPTION	Q'TY	REMARKS
1	2T4-83310-00	FRONT FLASHER LIGHT ASSY 1	2	
2	185-83311-10	•BULB (6V-8W)	1	
3	2T4-83312-00	•LENS, flasher	1	
4	98501-05010	SCREW, Pan head	2	
5	92901-05600	WASHER, Plate	2	
6	2T4-83303-00	REAR FLASHER LIGHT ASSY	2	
7	185-83311-10	•BULB (6V-8W)	1	
8	2T4-83312-00	•LENS, flasher	1	
9	2T4-83368-01	STAY, flasher	1	
10	98501-05010	SCREW, Pan head	1	
11	92501-06012	SCREW, Pan head	2	
12	92901-06100	WASHER, sPring	2	
13	2T4-83369-01	STAY, flasher	1	
14	98501-05010	SCREW, Pan head	1	
15	2T4-83350-11	FLASHER RELAY ASSY	1	
16	2T4-83390-20	AUDIO PILOT ASSY	1	

FWD

FIG. 28 SPEEDOMETER

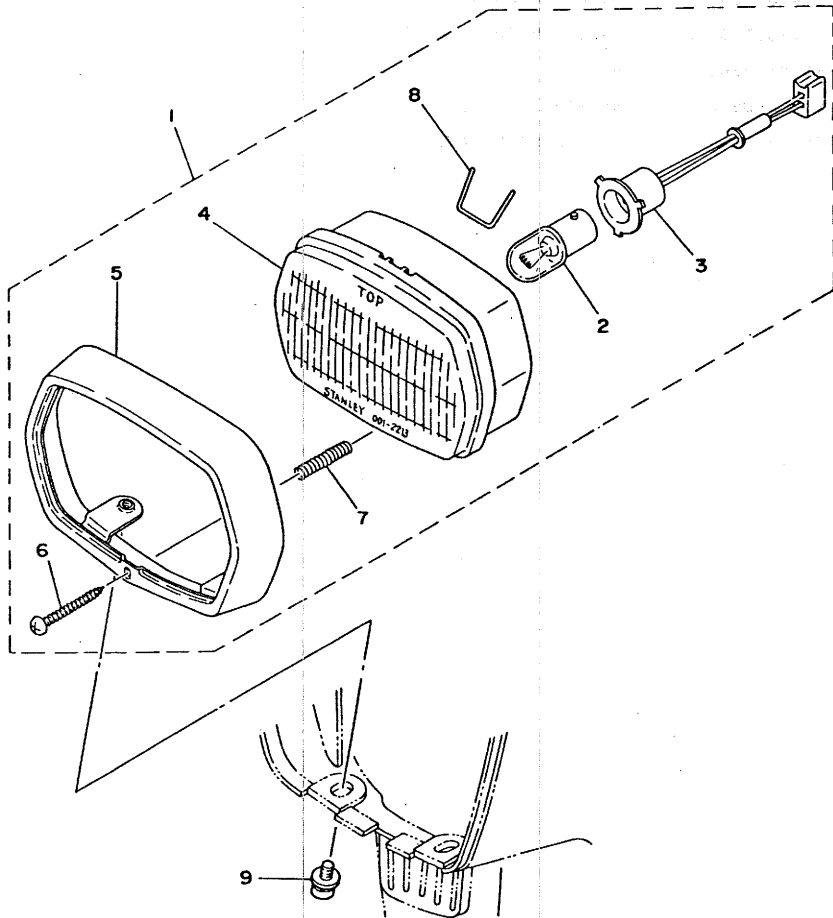
REF. NO.	PART NO.	DESCRIPTION	Q'TY	REMARKS
1	2T4-83510-F0	SPEEDOMETER ASSY	1	km/h
2	2T4-83509-00	SOCKET CORD ASSY	1	
3	122-83516-10	BULB (6V-3W)	2	
4	95301-05600	NUT	1	
5	92901-05100	WASHER, sPring	1	
6	2E9-83550-00	SPEEDOMETER CABLE ASSY	1	



← FWD

FIG. 29 HEADLIGHT

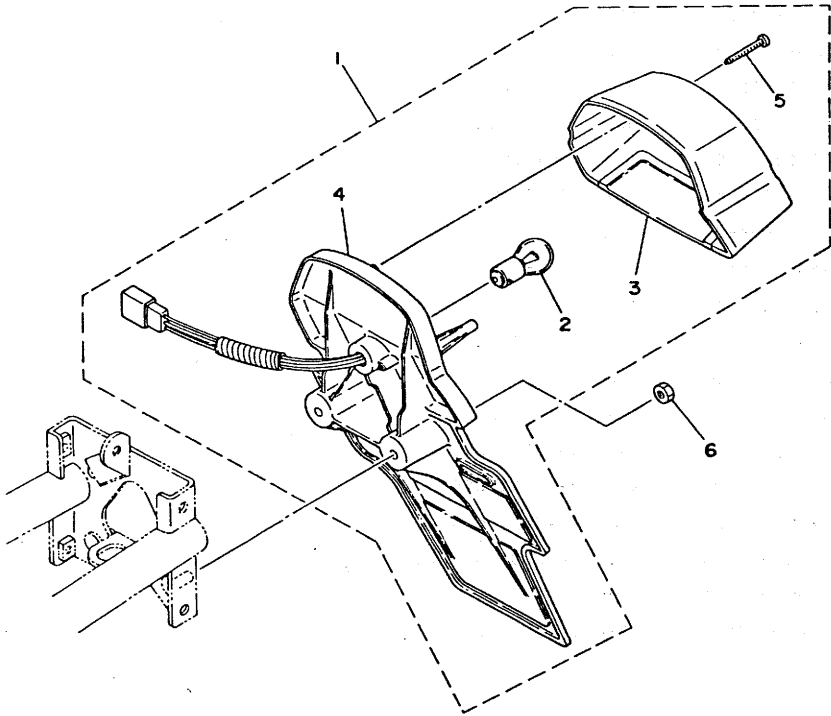
REF. NO.	PART NO.	DESCRIPTION	Q'TY	REMARKS
1	2T4-84110-00	HEADLIGHT UNIT ASSY	1	
2	206-84114-60	•BULB (6V-25/25W)	1	
3	2T4-84140-00	•SOCKET CORD ASSY	1	
4	2T4-84120-00	•LENS ASSY	1	
5	2T4-84115-00	•RIM, headlight	1	
6	97701-40540	•SCREW, tapping	1	
7	2T4-84132-00	•SPRING, screw	1	
8	2T4-84124-00	•SPRING, set	1	
9	90159-05024	SCREW, with washer	2	



FWD

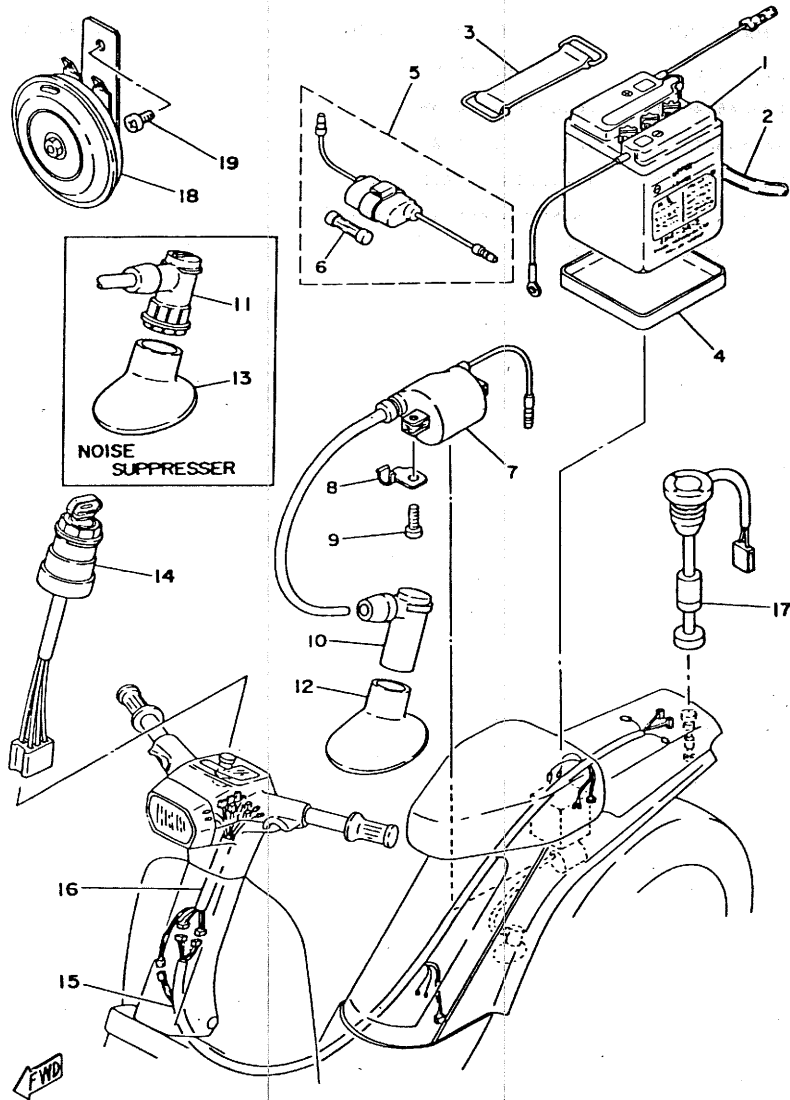
FIG. 30 TAILLIGHT

REF. NO.	PART NO.	DESCRIPTION	Q'TY	REMARKS
1	2T4-84500-00	TAILLIGHT ASSY	1	
2	122-84514-00	.BULB (6V-10/3W)	1	
3	2T4-84521-00	.LENS, taillight	1	
4	2T4-84520-00	.TAILLIGHT BASE ASSY	1	
5	97701-40130	.SCREW, Panhead tapping	2	
6	95301-06600	NUT	2	



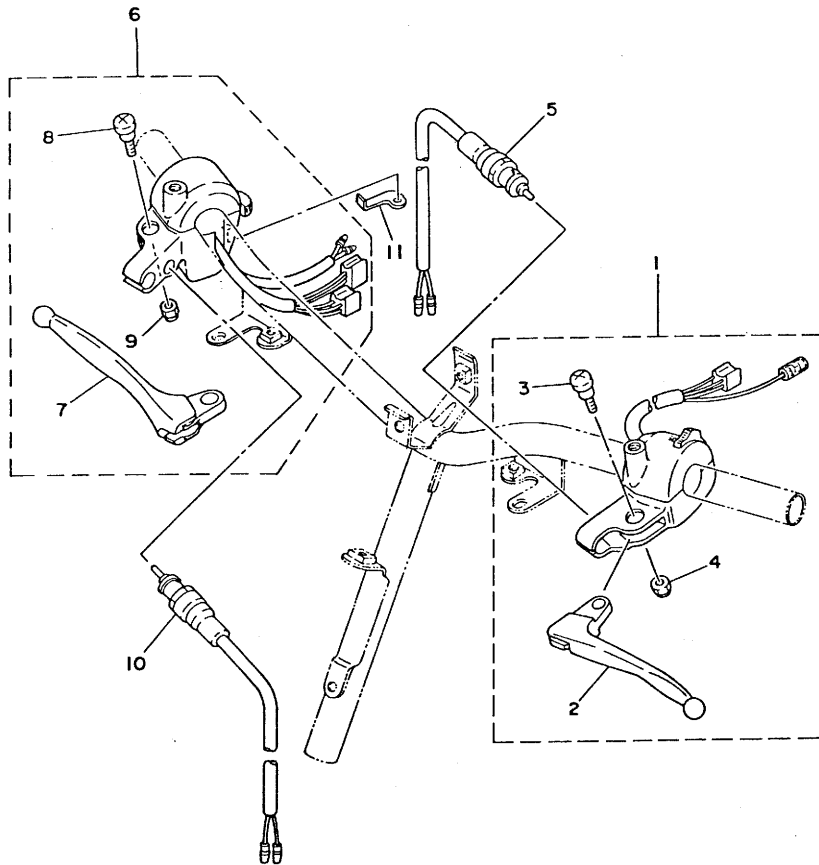
← FWD

FIG. 31 ELECTRICAL 1



REF. NO.	PART NO.	DESCRIPTION	Q'TY	REMARKS
1	120-82110-12	BATTERY ASSY (G.S. 6N4-2A-2)	1	UR
	120-82110-21	BATTERY ASSY (F.B. 6N4-2A-2)	1	UR
	120-82110-31	BATTERY ASSY (YUASA 6N4-2A-2)	1	UR
2	90445-08383	HOSE	1	
3	2T4-82131-00	BAND, battery	1	
4	268-82122-00	SEAT, battery	1	
5	353-82150-00	FUSE HOLDER ASSY	1	
6	116-82151-00	FUSE (6V-10A)	1	
7	2T4-82310-M0	IGNITION COIL ASSY	1	
8	2T4-82594-00	CLAMP	1	
9	92501-06015	SCREW, Pan head	1	
10	2E9-82370-00	PLUG CAP ASSY	1	
11	512-82370-10	PLUG CAP ASSY	1	with noise suP- Presser
12	2E9-82372-00	SEAL, Plug caP	1	
13	3W9-82372-00	SEAL, Plug caP	1	
14	2T4-82510-A0	MAIN SWITCH ASSY	1	
15	2T4-82590-22	WIRE HARNESS ASSY	1	
16	2T4-82580-21	WIRE HARNESS ASSY 2	1	
17	2T4-85720-00	OIL LEVEL GAUGE ASSY	1	
18	2E9-83371-10	HORN	1	
19	92501-06008	SCREW, Pan head	1	

FIG. 32 HANDLE SWITCH-LEVER



REF. NO.	PART NO.	DESCRIPTION	Q'TY	REMARKS
1	2T4-W8271-30	LEVER HOLDER ASSY	1	
2	2T4-83912-01	•LEVER 1	1	
3	90149-05119	•SCREW	1	
4	95601-05100	•NUT, u	1	
5	2T4-83980-00	FRONT STOP SWITCH ASSY	1	
6	2T4-W8292-40	LEVER HOLDER ASSY (R.H)	1	
7	2T4-83922-01	•LEVER 2	1	
8	90149-05119	•SCREW	1	
9	95601-05100	•NUT, u	1	
10	2T4-83980-00	FRONT STOP SWITCH ASSY	1	
11	2T4-26257-00	STOPPER	1	

FWD



# REPAIR KIT

FIG. 33 REPAIR KIT

REF. NO.	PART NO.	DESCRIPTION	Q'TY	REMARKS
1	2E9-11630-01	PISTON ASSY (STD)	1	
2	2E9-11631-00-XO	•PISTON (STD)	1	
3	2E9-11633-00	•PIN, Piston	1	
4	260-11610-02	•PISTON RING SET (STD)	1	
5	93450-11021	•CIRCLIP	2	
6	2E9-11630-11	PISTON ASSY (1ST O/S)	1	
7	2E9-11635-00	•PISTON (1ST O/S 0.25MM)	1	
8	2E9-11633-00	•PIN, Piston	1	
9	260-11610-12	•PISTON RING SET (1ST O/S)	1	
10	93450-11021	•CIRCLIP	2	
11	2E9-11630-21	PISTON ASSY (2ND O/S)	1	
12	2E9-11636-00	•PISTON (2ND O/S 0.50MM)	1	
13	2E9-11633-00	•PIN, Piston	1	
14	260-11610-22	•PISTON RING SET (2ND O/S)	1	
15	93450-11021	•CIRCLIP	2	
16	2E9-11650-00	CONNECTING ROD ASSY	1	
17	2E9-11681-00	•PIN, crank 1	1	
18	93310-416F7	•BEARING, cylindrical	1	
19	2E9-11651-00	•ROD, connecting	1	
20	93310-21038	•BEARING, cylindrical	1	

# INDEX

NUMERICAL INDEX

PART NO.	REF. NO.	PART NO.	REF. NO.	PART NO.	REF. NO.
2T4-W0017-00	7-32	2T4-13101-10	5- 1	2T4-14451-00	6-13
2T4-W0018-00	7-33	2E9-13124-00	5- 9	2T4-14453-00	6- 8
2T4-W2471-01	20- 1	384-13138-00	5- 6	2T4-14610-00	8- 1
2T4-W8271-30	32- 1	2E9-13174-00	5-16	2E9-14613-00	8- 2
2T4-W8292-40	32- 6	2E9-13178-01	5-17	807-14617-00	11- 5
2T4-1111F-00	1- 2	2T4-13555-01	6- 6	2T4-14718-01-YO	8- 6
2T4-11111-10	1- 1	2T4-13610-01	6- 1	2T4-15110-00	9- 1
2E9-11161-02	4- 4	2E9-13613-02	6- 2	2T4-15120-00	9- 9
517-11181-00	1- 8	2T4-13616-00	6- 3	2T4-15317-00	9-11
2T4-11311-00	1-10	288-14124-00	7- 5	2T4-15363-00	9-17
2E9-11351-00	1-11	2T4-14126-00	7- 3	2E9-15371-01	9-15
2T4-11400-10	2- 1	2T4-14136-00	7- 9	498-15371-00	9- 5
2T4-11412-10	2- 2	2T4-14137-00	7-10	2T4-15411-00-YO	9-13
2T4-11422-10	2- 6	288-14161-00	7- 6	2E9-15416-00	9-22
260-11610-02	2-17	2T4-14168-00	7- 2	2T4-15451-00	9-14
	33- 4	367-14169-00	7- 4	4K5-15610-00	10- 8
260-11610-12	2-17	2T4-14191-01	7-25	4K5-15612-00	10- 9
	33- 9	2T4-14211-00	7-15	2T4-15618-00	10-13
	2-17	2T4-14212-00	7-16	2E9-15631-00	10-18
	33-14	2T4-14227-00	7-26	384-15635-00	12-17
2E9-11630-01	33- 1	2T4-14301-10	7- 1	2T4-15637-00	12-18
2E9-11630-11	33- 6	2T4-14312-20	7- 7	2E9-15641-00	10- 5
2E9-11630-21	33-11	2T4-14323-00	7-17	2E9-15650-00	10-15
2E9-11631-00-A0	2-15	2T4-14325-00	7-31	2E9-15659-00	10-16
		2T4-14331-00	7- 8	2E9-15661-00	10- 1
2E9-11631-00-X0	2-15	2T4-14336-01	7-11	2E9-15673-00	10-19
	33- 2	2T4-14337-00	7-18	2T4-16314-00	11- 7
2E9-11631-00-Y0	2-15	2T4-14341-00	7-12	2T4-16611-00	11- 1
		2T4-14342-20	7-14	2E9-16620-00	11- 2
2E9-11633-00	2-16	2T4-14342-22	7-14	2T4-16627-01	11-14
	33- 3	288-14343-48	7-13	2T4-16627-10	11-14
	33- 8	288-14343-49	7-13	2E9-16629-00	11- 3
	33-13	288-14343-50	7-13	2T4-16629-00	11-16
2E9-11635-00	2-15	2T4-14353-21	7-14	2T4-16630-00	11-12
	33- 7	2T4-14357-00	7-29	2T4-16673-00	11-13
2E9-11636-00	2-15	2T4-14381-20	7-22	2T4-17121-01	12- 5
	33-12	2T4-14381-21	7-22	2T4-17410-00	12- 1
2E9-11650-00	33-16	2T4-14381-22	7-22	2T4-17420-00	12-16
2E9-11651-00	2- 5	2T4-14384-00	7-23	2T4-17467-00	12-13
	33-19	2T4-14385-00	7-19	2T4-17477-00	12-15
2E9-11681-00	2- 3	367-14386-00	7-20	2T4-17497-03	12-12
	33-17	2T4-14392-00	7-21	2T4-21110-00-6A	13- 1
2T4-12242-02	12- 8	2T4-14397-00	7-28	2T4-2139X-00	13-13
2E9-12611-01	4-13	2T4-14399-02	1- 6	2T4-21393-02	13- 7
2T4-12631-01	4- 5	2T4-14399-10	1- 6	2T4-21410-01	13- 6
2T4-12651-01	4- 1	2T4-14411-00	6-11	2T4-21471-03	13-16
2E9-12652-01	4- 3	2T4-14412-00	6-12	2T4-21481-01	13- 4
2T4-12653-00	4- 9	2E9-14437-01	6-14	2T4-21511-01-L3	14- 1
				2T4-21511-01-26	14- 1
				2T4-21511-01-3G	14- 1
				2T4-21518-01	14- 5
				2T4-21629-00	14- 6
				4F1-21668-00	15-19

NUMERICAL INDEX

PART NO.	REF. NO.	PART NO.	REF. NO.	PART NO.	REF. NO.
2T4-21710-00	15- 1	3L5-24268-00	19- 8	2E9-26243-00	23- 6
2T4-21717-00	15-16	2T4-24311-00	19-10	2T4-26257-00	32-11
2T4-21721-00-L3	15- 4	677-24444-00	7-24	2E9-26263-01	23-22
2T4-21721-00-26	15- 4	2T4-24500-02	19-14	2T4-26270-00	23-23
2T4-21721-00-3G	15- 4	2T4-24514-01	19-16	2T4-26288-01	13-12
2T4-21731-00-L3	15-17	2T4-24521-00	19-17	3L6-26290-00	24- 6
2T4-21731-00-26	15-17	2T4-24564-00	19-15	3L6-26290-10	24- 7
2T4-21731-00-3G	15-17	296-24610-00	19- 2	2T4-26311-01	23-19
2T4-21741-00-L3	15-10	2T4-24711-01	20- 2	2T4-26312-00	23-20
2T4-21741-00-26	15-10	296-24723-00	20- 6	2T4-26321-00	23-21
2T4-21741-00-3G	15-10	2T4-24726-00	20- 3	2T4-26341-00	23- 8
2T4-21748-02	15- 8	1L9-24741-00	20-10	2T4-26351-01	23-12
		3L4-24841-00	18-14	2E9-26393-00	23-16
2T4-21749-02	15- 9	2T4-24842-01	20- 7	2T4-27100-03	25- 1
		2E9-25116-00	21- 3	2T4-27116-01	25- 6
2T4-21751-01	16- 1	2T4-25121-00-35	21- 5	278-27314-00	25- 2
2T4-21752-02	16- 2	2E9-25129-00	21- 6	2T4-27481-00-L3	25- 7
2T4-21753-01	16- 5	3L8-2513A-00	21-17	2T4-27481-00-26	25- 7
3L5-21770-01	16- 6		22-11	2T4-27481-00-3G	25- 7
2T4-21781-00	24- 5	2E9-25130-00	21- 7	2T4-27483-01	25- 9
2T4-21782-00	15-21	451-25130-00	22- 5	2T4-27484-00	25-10
2T4-21783-00	15-22	2E9-25133-00	21- 8	2T4-27485-00	25-11
2T4-22210-01-93	17- 1	2E9-25135-00	21-11	2T4-28100-11	20-11
164-22216-00	9- 2	2E9-25137-01	21-22	2T4-28311-01	26- 1
4F0-22259-00	24-17	2T4-25137-00	21- 9	2T4-28312-01	26- 2
2T4-23100-00-L3	18- 1	2E9-25138-00	21-10	2T4-28352-00	26-10
2T4-23100-00-26	18- 1	2E9-25151-01	21-14	2T4-8131X-M1	3- 7
2T4-23100-00-3G	18- 1	451-25151-00	22- 8	2T4-81313-M0	3- 5
2T4-23110-00-93	18- 2	2T4-25155-00	21-13	353-81970-50	3-22
2T4-23120-00-93	18- 3	2T4-25180-00-35	21- 1	353-81970-63	3-22
2T4-23141-02	18- 5	2E9-25181-00	21-23	120-82110-12	31- 1
2E9-23143-00	18- 7	2T4-25185-00	21-21	120-82110-21	31- 1
2T4-23195-00	18- 6	2T4-25321-00-35	22- 4	120-82111-31	31- 1
2T4-23311-00-L3	18- 8	2T4-25336-00	22-12	2T4-82121-00	13-11
2T4-23311-00-26	18- 8	2T4-25355-01	22- 7	268-82122-00	31- 4
2T4-23311-00-3G	18- 8	2T4-25390-00-35	22- 1	116-82131-00	20-12
2T4-23340-00-L3	18- 4	2E9-25412-00	22-10	2T4-82131-00	31- 3
2T4-23340-00-26	18- 4	2T4-25412-00	22-16	353-82150-00	31- 5
2T4-23340-00-3G	18- 4	2T4-26110-01	23- 1	116-82151-00	31- 6
2T4-23391-00-L3	24- 1	2E9-26129-00	23-26	2T4-82310-M0	31- 7
2T4-23391-00-26	24- 1	2T4-26213-00-L3	24- 8	2E9-82370-00	31-10
2T4-23391-00-3G	24- 1	2T4-26213-00-26	24- 8	512-82370-10	31-11
2E9-23411-01	18- 9	2T4-26213-00-3G	24- 8	2E9-82372-00	31-12
2E9-23412-00	18-10	2T4-26215-00-L3	24-13	3W9-82372-00	31-13
2E9-23413-01	18-11	2T4-26215-00-26	24-13	2T4-82510-A0	31-14
2T4-23418-01	18-19	2T4-26215-00-3G	24-13	2T4-82580-21	31-16
2E9-23454-00	18-13	2E9-26241-00	23- 7	2T4-82590-22	31-15
2T4-24110-02-YO	19- 1	2E9-26242-00	23- 5	2T4-82594-00	31- 8
4F1-2415E-00	15-20				
2E9-24181-00	16- 9				
2T4-24183-00	14- 7				
2T4-24260-01	19- 7				

NUMERICAL INDEX

PART NO.	REF. NO.	PART NO.	REF. NO.	PART NO.	REF. NO.
2T4-83303-00	27- 6	90109-08507	23- 2	90387-05679	16- 3
2T4-83310-00	27- 1	90109-08510	20- 9	90387-06023	8- 9
185-83311-10	27- 2	90116-06269	1-12	90387-06694	12- 9
	27- 7	90116-08281	19- 3	90387-10620	21-24
2T4-83312-00	27- 3	90119-06018	25- 8	90387-12695	12- 7
	27- 8	90119-06019	13-17	90387-16680	11-11
	27-15	90122-05010	15-18	90401-10029	5- 8
2T4-83368-01	27- 9	90149-04135	5- 5	90430-04004	5- 4
2T4-83369-01	27-13	90149-05119	32- 3	90430-06012	6-18
2E9-83371-10	31-18		32- 8		8-10
2T4-83390-20	27-16	90149-06113	8- 3	90430-08119	9-20
2T4-83509-00	28- 2	90153-06020	4- 6	90445-05352	5-12
2T4-83510-F0	28- 1	90153-06022	9-24	90445-07387	19-20
122-83516-10	28- 3	90154-05004	19- 9	90445-07398	24- 4
2T4-83519-01	24-12	90159-05018	18-16	90445-07419	7-34
2E9-83550-00	28- 6	90159-05023	16-12	90445-08383	31- 2
2T4-83912-01	32- 2	90159-05024	24-14	90445-08388	1- 4
2T4-83922-01	32- 7		29- 9	90445-08389	1- 5
802-83923-00	4- 2	90159-05029	23-24	90445-08411	1- 7
	16-13	90159-06020	6-17	90445-09228	16-10
437-83936-10	13-18	90167-06003	16- 7	90445-09304	19-12
2T4-83980-00	32- 5	90170-10105	5- 7	90446-07153	9- 6
	32-10	90170-10219	11- 8	90460-30143	6-20
2T4-84110-00	29- 1	90171-10004	21-25	90460-37130	16- 4
206-84114-60	29- 2	90176-05024	23-25	90461-05036	3- 8
2T4-84115-00	29- 5	90179-06176	23-10	90462-06044	4-10
2T4-84120-00	29- 4		23-14	90464-20031	13-14
2T4-84124-00	29- 8	90179-08258	23- 4	90467-08003	16-11
2T4-84132-00	29- 7	90185-12046	22-14		19-11
2T4-84140-00	29- 3	90201-06050	14- 4		19-13
2T4-84500-00	30- 1		24-16	90467-20023	6-10
122-84514-00	30- 2		26- 4	90468-02033	5-13
2T4-84520-00	30- 4		26- 6	90468-10081	2-13
2T4-84521-00	30- 3	90201-06643	1-13	90468-12006	25- 5
2T4-85500-M0	3- 1	90201-06655	12-10	90480-01141	14- 8
2T4-85520-M1	3- 4	90201-06656	21-12	90480-01247	16- 8
2E9-85540-M0	3-19	90201-08100	19- 6	90480-12053	24- 2
2T4-85550-M0	3- 2	90201-10140	17- 4	90480-12237	8- 8
2E9-85561-M0	3- 3	90201-12699	22-15	90480-12248	24- 3
2T4-85568-M1	3-16	90201-12704	12- 3	90480-21038	9-23
2T4-85569-M1	3-17	90201-14691	12- 2	90501-06490	6- 9
2E9-85580-M1	3- 6	90201-15700	22-17	90501-10513	23- 9
2T4-85720-00	31-17	90201-18654	10- 2	90501-10532	23-13
90101-05396	22- 9	90208-10012	11- 9	90501-29517	13-15
90105-08103	9-19	90208-12027	12- 4	90504-18005	10-10
90105-08121	17- 2	90209-10108	10-11	90506-14081	22- 6
90105-10117	13- 2	90249-12008	23-11	90506-20165	11- 4
90109-06504	20- 5		23-15	90508-32356	10- 4
		90280-03017	2- 7	90560-10173	21- 2
		90282-05031	11-10	90890-55140	18-15

NUMERICAL INDEX

PART NO.	REF. NO.	PART NO.	REF. NO.	PART NO.	REF. NO.
91401-20020	21-26	92901-08200	15- 7	95301-10600	17- 3
91609-30014	5-10		15-13	95301-12700	2-10
91701-08120	25- 3	92901-08600	25- 4	95304-05800	26- 9
91830-21014	9-16	92901-10200	21-27	95601-05100	32- 4
91830-22016	9- 7	92901-12100	2- 9		32- 9
92501-06008	13- 8	92901-12600	2- 8	95611-10100	13- 5
	31-19	92903-05600	26- 8	95701-06100	20- 4
92501-06012	1- 3	93101-10001	5- 2	95701-08100	19- 5
	12-14	93102-17067	2-14	95701-10100	13- 3
	18-17	93102-18091	10- 7	97301-05020	21-15
	19-18	93102-20070	12-20	97301-06012	23-17
	27-11	93102-23174	2-12	97301-06014	4- 7
92501-06014	3-20	93106-17015	21- 4		13- 9
92501-06015	4-14	93210-14104	9-18	97301-06025	14- 2
	26- 3	93210-26240	5- 3	97301-08020	8- 4
	31- 9	93306-00203	9- 3	97301-08025	22-13
92501-06020	12-11		9-10	97306-06020	24-15
92501-06025	4-11	93306-20005	21-20	97311-06025	10-14
	9-21	93306-20006	21-20	97701-40130	30- 5
92501-06040	6- 7	93306-20107	9- 4	97701-40516	24- 9
92501-06045	9- 8	93306-20203	12-19	97701-40540	29- 6
92701-06015	3-18	93306-20313	2-11	98501-03008	6- 4
92901-03100	6- 5	93310-21038	2-19	98501-04006	3-11
92901-04100	3-10		33-20	98501-04012	7-27
	3-12	93310-416F7	2- 4	98501-04018	3-13
	3-15		33-18	98501-04025	3-14
	28- 5	93410-14016	10- 6	98501-05010	15- 2
92901-05100	24-11	93410-18047	10- 3		27- 4
92901-05200	3-24	93420-35003	12-21		27-10
92901-05600	15- 3	93430-04003	11-15		27-14
	15- 6	93430-07012	11- 6	98501-05016	15- 5
	15-12	93430-08006	5-11		15-11
	27- 5	93430-10016	10-17	98501-05020	5-14
92901-06100	4-15	93440-10028	10-12	98501-05035	5-15
	13-10	93440-15012	9-12	98501-05070	6-15
	14- 3	93450-11021	2-18	98503-04010	3- 9
	19-19		33- 5		7-30
	23-18		33-10	98901-06012	8- 7
	27-12		33-15		26- 5
92901-06200	6-19	93505-32002	18-12	98903-05012	26- 7
92901-06600	3-21	94127-10297	21-18	98903-05016	24-10
	4- 8		22- 2		
	4-12	94225-10112	21-19		
	4-16		22- 3		
	18-18	94580-21080	12- 6		
92901-08100	8- 5	94703-00159	1- 9		
	19- 4	95301-05600	3-23		
	23- 3		6-16		
			21-16		
			28- 4		
		95301-06600	1-14		
			30- 6		
		95301-08800	20- 8		

## PARTS NAME INDEX

DESCRIPTION	REF. NO.
ABSORBER 1	4- 4
AIR SHROUD, cylinder 1	4- 1
AIR SHROUD, cylinder 2	4- 3
AIR SHROUD, cylinder 3	4- 9
AUDIO PILOT ASSY	27-16
AXLE, kick	10- 1
AXLE, wheel	21-23
BALL	18-12
BAND, battery	20-12
*	31- 3
BAND, switch cord	13-18
BASE, magneto	3- 3
BATTERY ASSY (F.B. 6N4-2A-2)	31- 1
BATTERY ASSY (G.S. 6N4-2A-2)	31- 1
BATTERY ASSY (YUASA 6N4-2A-2)	31- 1
BEARING (B6002)	9- 3
*	9-10
BEARING (B6200)	21-20
*	21-20
BEARING (B6201)	9- 4
BEARING (B6202RS)	12-19
BEARING (B6203)	2-11
BEARING, cylindrical	2- 4
*	2-19
*	33-18
*	33-20
BOARD, footrest	25- 7
*	25- 7
*	25- 7
BODY, float chamber	7-22
*	7-22
*	7-22
BOLT	4- 7
*	8- 4
*	10-14
*	13- 9
*	14- 2
*	20- 5
*	20- 9
*	21-15
*	22- 9
*	22-13
*	23- 2
*	23-17
*	24-15
BOLT, engine mounting 1	13- 4
BOLT, stud	1-12
*	19- 3
BOLT, union	5- 8

## PARTS NAME INDEX

DESCRIPTION	REF. NO.
BOLT, washer based	9-19
*	13- 2
*	17- 2
BOLT, wing	15-18
BOLT, with washer	13-17
*	25- 8
BOSS, connector	16- 5
BRACKET, battery box	13- 7
BRACKET, meter	24-12
BRAKE SHOE COMP.	21- 7
*	22- 5
BREATHER	9- 5
*	9-15
BULB (6V-10/3W)	30- 2
BULB (6V-25/25W)	29- 2
BULB (6V-3W)	28- 3
BULB (6V-8W)	27- 2
*	27- 7
BUSH, rear shock absorber	9- 2
C.D.I. MAGNETO ASSY	3- 1
C.D.I. UNIT ASSY	3-19
CABLE CONNECTOR CAP ASSY	23-23
CABLE, brake	23- 8
*	23-12
CABLE, Pump	23-21
CABLE, throttle 1	23-19
CABLE, throttle 2	23-20
CAMSHAFT	21-14
*	22- 8
CAP	7- 4
CAP ASSY	19- 2
CAP, cleaner case 1	6-12
CAP, mixing chamber	7- 2
CARBURETOR ASSY 1	7- 1
CARRIER, front	18-14
CARRIER, rear	20- 7
CASE, air cleaner 1	6-11
CHAIN, drive (DID270H 80L)	12- 6
CIRCLIP	2-18
*	5-11
*	9-12
*	10- 3
*	10- 6
*	10-12
*	10-17
*	11- 6
*	11-15
*	12-21
*	33- 5
*	33-10
*	33-15
CLAMP	3- 8

## PARTS NAME INDEX

DESCRIPTION	REF. NO.
CLAMP	4-10
*	13-14
*	31- 8
CLAMP, hose	6-20
*	16- 4
CLIP	2-13
*	5-13
*	6-10
*	7-10
*	10-19
*	16-11
*	19-11
*	19-13
*	25- 5
CLUTCH CARRIER ASSY	11- 2
*	11-12
CLUTCH HOUSING COMP.	11- 1
COIL, charge	3- 4
COIL, lighting 1	3- 5
COIL, Pulser	3- 6
COLLAR	8- 9
*	11-11
*	12- 7
*	12- 9
*	12- 9
*	15- 8
*	15- 9
*	15-14
*	15-15
*	16- 3
*	21-24
COLLAR, lever 2	4- 2
*	16-13
CONNECTING ROD ASSY	33-16
CORD ASSY	3- 7
COVER, crankcase 1	9-13
COVER, kick lever	10-13
COVER, lower	24-13
*	24-13
*	24-13
COVER, oil Pump	9-22
COVER, side 2	15- 4
*	15- 4
*	15- 4
COVER, side 3	15-17
*	15-17
*	15-17
COVER, side 4	15-10
*	15-10
*	15-10
COVER, single seat	20- 2

## PARTS NAME INDEX

DESCRIPTION	REF. NO.
COVER, upper	24- 8
*	24- 8
*	24- 8
CRANK 1	2- 2
CRANK 2	2- 6
CRANKCASE ASSY 1	9- 1
CRANKCASE ASSY 2	9- 9
CRANKSHAFT ASSY	2- 1
CUP, filter	19-17
CYLINDER 1	1-10
DAMPER	13-13
DAMPER, clutch weight	11- 3
*	11-16
DAMPER, locating 1	16- 9
DAMPER, locating 3	14- 7
DAMPER, seat	20- 6
DAMPER, side cover	15-16
DEFLECTOR 1	4- 5
DIAPHRAGM KIT	7-32
DRIVE AXLE ASSY	12-16
DUCT	6-14
ELEMENT, air cleaner	6-13
EMBLEM 1	24- 5
EMBLEM 2	15-21
EMBLEM 3	15-22
ENGINE BRACKET COMP.	13- 6
EXHAUST PIPE ASSY 1	8- 1
FAN	4-13
FENDER, front	14- 1
*	14- 1
*	14- 1
FLANGE, spacer 2	21- 3
FLASHER RELAY ASSY	27-15
FLOAT	7-19
FRAME COMP	13- 1
FRONT BASKET	18-15
FRONT FLASHER LIGHT ASSY 1	27- 1
FRONT FORK ASSY	18- 1
*	18- 1
*	18- 1
FRONT STOP SWITCH ASSY	32- 5
*	32-10
FRONT WHEEL COMP.	21- 1
FUEL COCK ASSY 1	19-14
FUEL METER ASSY	19- 7
FUEL TANK COMP.	19- 1
FUSE (6V-10A)	31- 6
FUSE HOLDER ASSY	31- 5
GASKET	5- 4

## PARTS NAME INDEX

DESCRIPTION	REF. NO.
GASKET	6-18
*	7- 3
*	7-26
*	8-10
*	9-20
*	19-15
GASKET, crankcase cover	9-14
GASKET, cylinder	1-11
GASKET, cylinder head 1	1- 8
GASKET, exhaust pipe	8- 2
GASKET, float chamber	7-23
GASKET, fuel meter	19- 8
GEAR, drive (14T)	21-11
GEAR, kick (47T)	10- 5
GEAR, kick Pinion (23T)	10-18
GEAR, meter	21-10
GEAR, Pump drive	5-17
GEAR, worm wheel (88T)	5- 9
GEAR, 2nd Pinion (15T)	12- 5
GRIP (L.H)	23- 7
GRIP (R.H)	23- 5
GROMMET	8- 8
*	9-23
*	14- 8
*	16- 8
*	24- 2
*	24- 3
GROMMET, cable	13-12
GUARD, mud	14- 6
GUIDE, chain 1	12-13
HANDLE COMP.	23- 1
HEAD, cylinder 1	1- 1
HEADLIGHT UNIT ASSY	29- 1
HINGE, seat	20- 3
HOLDER	23-16
HOLDER, cable	14- 5
HOLDER, oil pipe	5-16
HOLDER, spring	12-15
HORN	31-18
HOSE	1- 4
*	1- 5
*	1- 7
*	5-12
*	7-34
*	9- 6
*	16-10
*	19-12
*	19-20
*	24- 4
*	31- 2
IDLE GEAR ASSY (52T/15T)	10-15

## PARTS NAME INDEX

DESCRIPTION	REF. NO.
IGNITION COIL ASSY	31- 7
INNER TUBE COMP.1	18- 2
INNER TUBE COMP.2	18- 3
JET, main (#096)	7-13
JET, main (#098)	7-13
JET, main (#100)	7-13
JET, Pilot (#040)	7-14
JET, Pilot (#042)	7-14
JET, Pilot (#044)	7-14
JOINT, air cleaner 1	6- 8
KEY, straight	11-10
KEY, woodruff	2- 7
KICK CRANK ASSY	10- 8
LABEL, caution	15-20
LABEL, tire	15-19
LABEL, warning	24-17
LEG SHIELD 1	26- 1
LEG SHIELD 2	26- 2
LENS ASSY	29- 4
LENS, flasher	27- 3
*	27- 8
LENS, taillight	30- 3
LEVER HOLDER ASSY	32- 1
LEVER HOLDER ASSY (R.H)	32- 6
LEVER 1	32- 2
LEVER 2	32- 7
LEVER, camshaft	22- 7
LEVER, camshaft 1	21-13
LEVER, kick	10- 9
MAIN AXLE ASSY (33T)	12- 1
MAIN STAND ASSY	25- 1
MAIN SWITCH ASSY	31-14
MANIFOLD, intake	6- 6
MAT 1	25- 9
MAT 2	25-10
MIRROR ASSY	24- 6
*	24- 7
NEEDLE	7-11
NET, filter 1	19-16
NOZZLE, main	7-12
NUF	1-14
*	2-10
*	3-23
*	5- 7
*	6-16
*	11- 8
*	17- 3
*	21-16
*	23- 4
*	23-10

## PARTS NAME INDEX

DESCRIPTION	REF. NO.
NUT	23-14
*	28- 4
*	30- 6
NUT, cable adjusting	7- 6
NUT, castle	21-25
NUT, crown	20- 8
*	23-25
*	26- 9
NUT, fitting 2	18-13
NUT, flange	13- 3
*	19- 5
*	20- 4
NUT, self-locking	22-14
NUT, u	13- 5
*	32- 4
*	32- 9
O-RING	5- 3
*	7-28
*	9-18
OIL LEVEL GAUGE ASSY	31-17
OIL PUMP ASSY	5- 1
OIL SEAL	2-12
*	2-14
*	5- 2
*	10- 7
*	12-20
*	21- 4
OIL TANK CAP ASSY	16- 6
PAD, battery	13-11
PAD, seat	20-10
PANEL, front	24- 1
*	24- 1
*	24- 1
PANEL, outer 1	18- 8
*	18- 8
*	18- 8
PAWL, kick	12-17
PIECE, connecting	23-22
PIN	23-11
*	23-15
PIN, clevis	25- 3
PIN, cotter	21-26
PIN, crank 1	2- 3
*	33-17
PIN, dowel	9- 7
*	9-16
PIN, float	7-20
PIN, Piston	2-16
*	33- 3

## PARTS NAME INDEX

DESCRIPTION	REF. NO.
PIN, Piston	33- 8
*	33-13
PIN, spring	5-10
PIPE, fuel 1	19-10
PISTON (STD)	2-15
*	2-15
*	2-15
*	33- 2
*	33- 2
*	33- 2
PISTON (1ST O/S 0.25MM)	2-15
*	33- 7
PISTON (2ND O/S 0.50MM)	2-15
*	33-12
PISTON ASSY (STD)	33- 1
PISTON ASSY (1ST O/S)	33- 6
PISTON ASSY (2ND O/S)	33-11
PISTON RING SET (STD)	2-17
*	33- 4
PISTON RING SET (1ST O/S)	2-17
*	33- 9
PISTON RING SET (2ND O/S)	2-17
*	33-14
PLATE	1- 2
PLATE, adjusting	5- 6
PLATE, brake shoe	21- 5
*	22- 4
PLATE, indicator	21-17
*	22-11
PLATE, tensioner	12- 8
PLUG CAP ASSY	31-10
*	31-11
PLUG, drain	7-25
PLUG, oil	9-17
PLUG, spark (NGK BP4HS)	1- 9
PLUNGER KIT	7-33
PROTECTOR, engine	13-16
PROTECTOR, muffler 1	8- 6
RACE, ball 1	18- 9
RACE, ball 2	18-10
RACE, ball 3	18-11
REAR FLASHER LIGHT ASSY	27- 6
REAR WHEEL COMP.	22- 1
RECTIFIER ASSY	3-22
*	3-22
REED VALVE ASSY	6- 1
REED, valve	6- 2
RIM, headlight	29- 5

## PARTS NAME INDEX

DESCRIPTION	REF. NO.
RING	11- 7
RING 1	21-21
RING 2	22-12
RING, stop	21- 9
*	21-22
ROD, connecting	2- 5
*	33-19
ROTOR ASSY	3- 2
RUBBER	18- 6
SCREW	5- 5
*	7-24
*	8- 3
*	32- 3
*	32- 8
SCREW, air adjusting	7-17
SCREW, blind	8- 7
*	24-10
*	26- 5
*	26- 7
SCREW, binding	19- 9
SCREW, cable adjusting	7- 5
SCREW, fitting	26-10
SCREW, flat head	3-18
SCREW, hexagon	4- 6
*	9-24
SCREW, Pan head	1- 3
*	3- 9
*	3-11
*	3-13
*	3-14
*	3-20
*	4-11
*	4-14
*	5-14
*	5-15
*	6- 4
*	6- 7
*	6-15
*	7-27
*	7-30
*	7-31
*	9- 8
*	9-21
*	12-11
*	12-14
*	13- 8
*	15- 2
*	15- 5

## PARTS NAME INDEX

DESCRIPTION	REF. NO.
SCREW, Pan head	15-11
*	18-17
*	19-18
*	26- 3
*	27- 4
*	27-10
*	27-11
*	27-14
*	31- 9
*	31-19
SCREW, Panhead tapping	24- 9
*	30- 5
SCREW, Pilot adjusting	7-15
SCREW, tapping	16- 7
*	29- 6
SCREW, with washer	6-17
*	16-12
*	18-16
*	23-24
*	24-14
*	29- 9
SEAL	25-11
SEAL, Plate dust	21- 6
SEAL, Plug cap	31-12
*	31-13
SEAT, battery	31- 4
SEAT, spring	7- 9
SEAT, spring lower	18- 7
SHAFT	10-16
SHAFT, clutch weight 2	11-13
SHOCK ABSORBER ASSY, rear	17- 1
SIDE COVER ASSY	15- 1
SINGLE SEAT ASSY	20- 1
SOCKET CORD ASSY	28- 2
*	29- 3
SPACER	21- 2
SPACER, engine mount	9-11
SPEEDOMETER ASSY	28- 1
SPEEDOMETER CABLE ASSY	28- 6
SPRING	12-12
SPRING, air adjusting	7-18
SPRING, clutch weight 2	11-14
*	11-14
SPRING, compression	6- 9
*	10-10
*	13-15
*	23- 9
*	23-13
SPRING, front fork	18- 5
SPRING, main stand	25- 6

## PARTS NAME INDEX

DESCRIPTION	REF. NO.
SPRING, Pawl	12-18
SPRING, Pilot adjusting	7-16
SPRING, return	21- 8
SPRING, screw	29- 7
SPRING, set	29- 8
SPRING, tension	11- 4
*	22- 6
SPRING, throttle valve	7- 8
SPRING, torsion	10- 4
STAY, flasher	27- 9
*	27-13
STOPPER	25- 2
*	32-11
STOPPER, reed valve	6- 3
TAILLIGHT ASSY	30- 1
TAILLIGHT BASE ASSY	30- 4
TANK, oil	16- 1
TERMINAL, earth 1	3-16
TERMINAL, earth 2	3-17
TIRE (2.75-10)	21-18
*	22- 2
TOOL KIT	20-11
TUBE (2.50-10)	21-19
*	22- 3
TUBE, filler 1	16- 2
TUBE, throttle guide	23- 6
UNDER BRACKET COMP.	18- 4
*	18- 4
*	18- 4
VALVE, bimetal	1- 6
*	1- 6
VALVE, needle	7-21
VALVE, throttle 1	7- 7
WASHER	10-11
*	11- 5
*	22-10
*	22-16
*	23-26
WASHER, conical spring	11- 9
*	12- 4
WASHER, Plain	6-19
*	7-29
*	15- 7
*	15-13
*	21-27
*	24-11
WASHER, Plate	1-13
*	2- 8
*	3-21
*	3-24

## PARTS NAME INDEX

DESCRIPTION	REF. NO.
WASHER, Plate	4- 8
*	4-12
*	4-16
*	10- 2
*	12- 2
*	12- 3
*	12-10
*	14- 4
*	15- 3
*	15- 6
*	15-12
*	17- 4
*	18-18
*	19- 6
*	21-12
*	22-15
*	22-17
*	24-16
*	25- 4
*	26- 4
*	26- 6
*	26- 8
*	27- 5
WASHER, special	18-19
WASHER, spring	2- 9
*	3-10
*	3-12
*	3-15
*	4-15
*	6- 5
*	8- 5
*	13-10
*	14- 3
*	19- 4
*	19-19
*	23- 3
*	23-18
*	27-12
*	28- 5
WIRE HARNESS ASSY	31-15
WIRE HARNESS ASSY 2	31-16

