



YAMAHA

PARTS CATALOGUE

RD50 (3W2)

A2



FOREWORD

This Parts Catalogue is related to the parts in use for the Yamaha RD 50 (3W2).
When you are ordering replacement parts for the RD 50 (3W2), refer to this Parts Catalogue and quote both part numbers and part names correctly.

1. Modifications or additions which have been made after issue of the Parts Catalogue will be announced in the Yamaha Parts News.
It is advisable that according to the Yamaha Parts News you make necessary corrections to the Parts Catalogue on hand to keep it up-to-date.

2. Abbreviations

The following abbreviations are used in this Parts Catalogue.

- U.R. Use size (thickness) and/or number as required.
- U.N. Use as many as you need.
- A.P. Alternate Parts
- L.M. Local Made
- F# Frame No. (Applicable machine No.)

3. The parts marked with (+) in the parts number column of this Catalogue are not supplied with by Yamaha, those have to be found locally.
4. Parts, which are to be supplied in the form of assemblies, are listed with an indention of one letter's space, and a dot (.) is put against the name of each part.

EXAMPLE CARBURETOR ASS'Y
. JET, pilot
. NOZZLE, main

5. Indication of No. of constituent parts for assembly

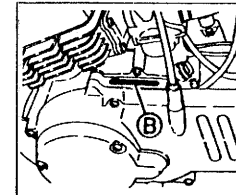
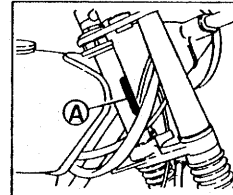
The numeral appearing to the right of each constituent part under the description indicates the quantity of such parts for each individual assembly unit.

EXAMPLE

Part No.	Description	Q'ty	Remarks
2F5-83310-60	FRONT FLASHER LIGHT ASS'Y	2	
115-83311-60	. BULB (6V-18W)	1	
1M1-83309-60	. REFLECTOR	1	

6. Initial Serial No. and Color Code

(A) Frame Serial No.	3W2-000101 and following
(B) Engine Serial No.	3W2-000101 and following



Color Code	Color Name	Abbreviate
T5	Maxim Red	MXR
29	Candy Blue	CB

7. Applicable colors of graphics are represented in the "Remarks" column by the letter(s) appropriately picked out of the full word(s) showing such colors.

EXAMPLE

Part No.	Description	Q'ty	Remarks
2N4-24110-00-X5	FUEL TANK COMP. .	1	MAXIM RED
3J1-24240-10	. GRAPHIC, fuel tank set	1	for MXR



CONTENTS

ENGINE

Cylinder Head · Cylinder	B2
Crankshaft · Piston	B3
Fly Wheel Magneto	B4
Oil Pump	B5
Intake	B6
Carburetor	B7 ~ B8
Exhaust	B9
Crankcase	B10
Crankcase Cover	B11
Kick Starter	B12
Clutch	B13 ~ B14
Transmission	B15
Tachometer Gear	C2
Shift Cam · Fork	C3
Shift Shaft · Pedal	C4

CHASSIS

Frame	C5
Front Fender · Rear Fender	C6
Side Cover · Tool	C7
Oil Tank	C8
Rear Arm · Suspension	C9
Steering	C10
Front Fork	C11
Fuel Tank	C12
Seat	C13 ~ C14
Front Wheel	C15
Front Brake Caliper	D2
Rear Wheel	D3 ~ D4
Handlebar · Cable	D5
FRT Master Cylinder	D6

Stand · Footrest	D7
Flasher Light	D8
Meter	D9
Headlight	D10
Taillight	D11
Electrical 1	D12
Handle Switch · Lever	D13

REPAIR KIT

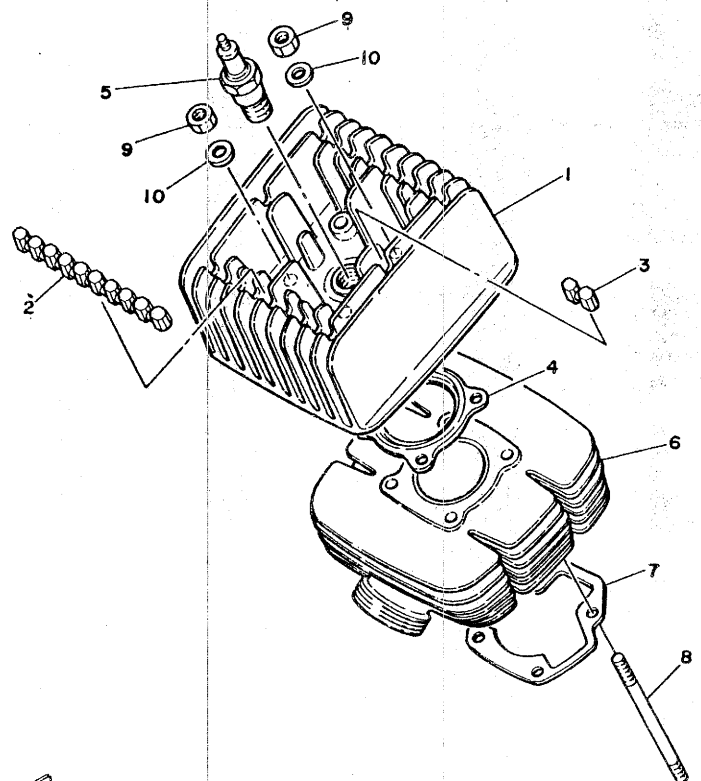
Repair Kit	D14
------------------	-----

INDEX

Numerical Index	M1 ~ M3
Parts Name Index	M11 ~ M16

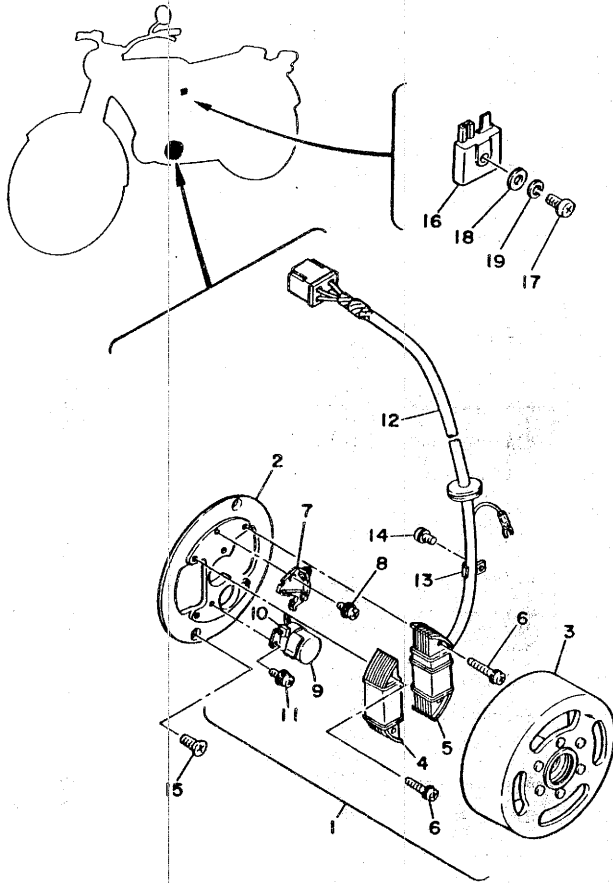
FIG. 1 CYLINDER HEAD, CYLINDER

REF. NO.	PART NO.	DESCRIPTION	Q'TY	REMARKS
1	2L4-11111-00	HEAD, cylinder 1	1	
2	2L4-11127-00	ABSORBER 3	2	
3	2L4-11128-00	ABSORBER 4	2	
4	107-11181-04 57 58	GASKET, cylinder head 1	1	
5	94701-00040	PLUG, sPark (NGK B7HS)	1	
6	2W1-11311-00	CYLINDER 1	1	
7	353-11351-00	GASKET, cylinder	1	
8	90116-06026	BOLT, stud	4	
9	95301-06600	NUT	4	
10	92901-06200	WASHER, Plain	4	



B2

FIG. 3 FLY WHEEL MAGNETO

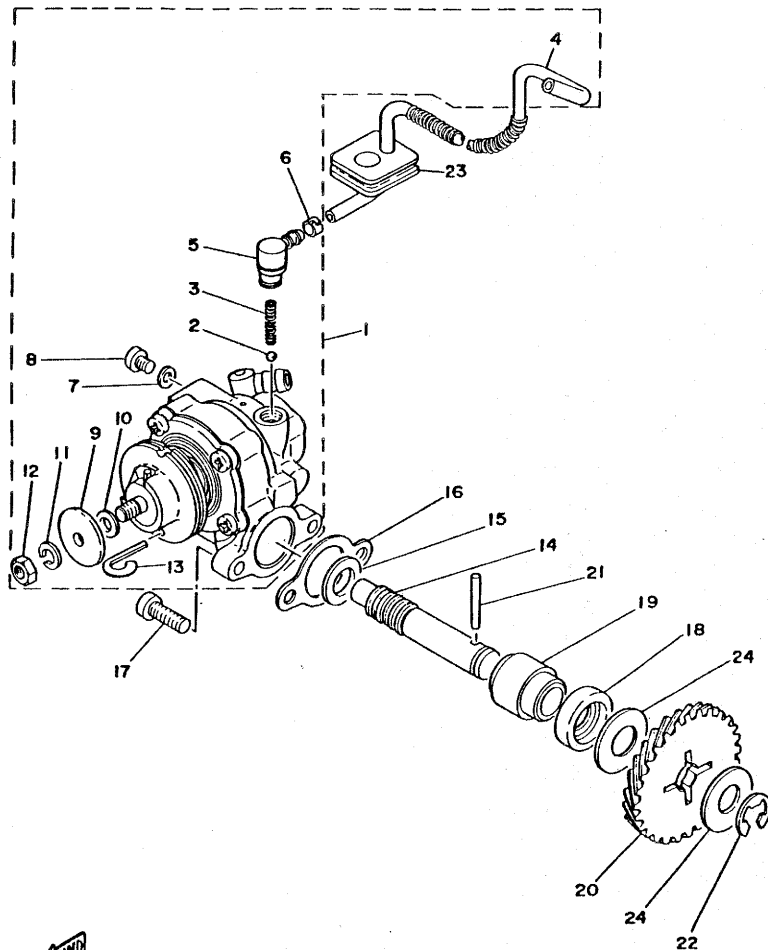


REF. NO.	PART NO.	DESCRIPTION	Q'TY	REMARKS
1	2M4-81300-20	FLYWHEEL MAGNETO ASSY	1	
2	520-81309-20	•BASE, magneto	1	
3	2M4-81350-20	•ROTOR ASSY	1	
4	2M4-81312-20	•COIL, source	1	
5	2M4-81313-20	•COIL, lighting	1	
6	110-81348-21	•SCREW, Pan head	4	
7	2A6-81321-20	•CONTACT BREAKER ASSY	1	
8	110-81347-21	•SCREW, Pan head	1	
9	1K8-81325-20	•CONDENSER	1	
10	116-81331-20	•LUBRICATOR	1	
11	110-81346-21	•SCREW, Pan head	1	
12	2M4-81315-20	•LEAD WIRE ASSY	1	
13	104-81328-20	•CLAMP	1	
14	110-81345-21	•SCREW, Pan head	1	
15	98701-05015	SCREW, flat head	2	
16	353-81970-50	RECTIFIER ASSY	1	UR
	353-81970-63	RECTIFIER ASSY	1	UR
17	98501-05020	SCREW, Pan head	1	
18	92901-05200	WASHER, Plain	1	
19	92901-05100	WASHER, Spring	1	

FWD

B4

FIG. 4 OIL PUMP



REF. NO.	PART NO.	DESCRIPTION	Q'TY	REMARKS
1	2A3-13101-00	OIL PUMP ASSY	1	
2	93505-32002	.BALL	1	
3	90501-02217	.SPRING, compression	1	
4	90445-05217	.HOSE	1	
5	353-13552-01	.NOZZLE	1	
6	90468-02033	.CLIP	1	
7	90430-04004	.GASKET	1	
8	98901-04008	.SCREW, bind	1	
9	137-13138-01	.PLATE, adjusting	1	
10	137-13137-00-03	.SHIM (0.3T)	1	UR
	137-13137-00-05	.SHIM (0.5T)	1	UR
	137-13137-00-10	.SHIM (1.0T)	1	UR
11	92901-05100	.WASHER, spring	1	
12	95301-05600	.NUT	1	
13	367-13146-01	.COVER, adjust Pulley	1	
14	2A3-13175-00	SHAFT, worm	1	
15	90201-08624	WASHER, Plate	1	
16	126-13116-00	GASKET, Pump case	1	
17	98501-05016	SCREW, Pan head	2	
18	93101-10001	OIL SEAL	1	
19	1E7-13176-00	METAL, worm shaft outer.	1	
20	353-13178-00	GEAR, Pump drive (28T)	1	
21	93603-22028	PIN, dowel	1	
22	93430-08006	CIRCLIP	1	
23	248-13174-00	HOLDER, oil Pipe	1	
24	90201-10135	WASHER, Plate	2	

B5

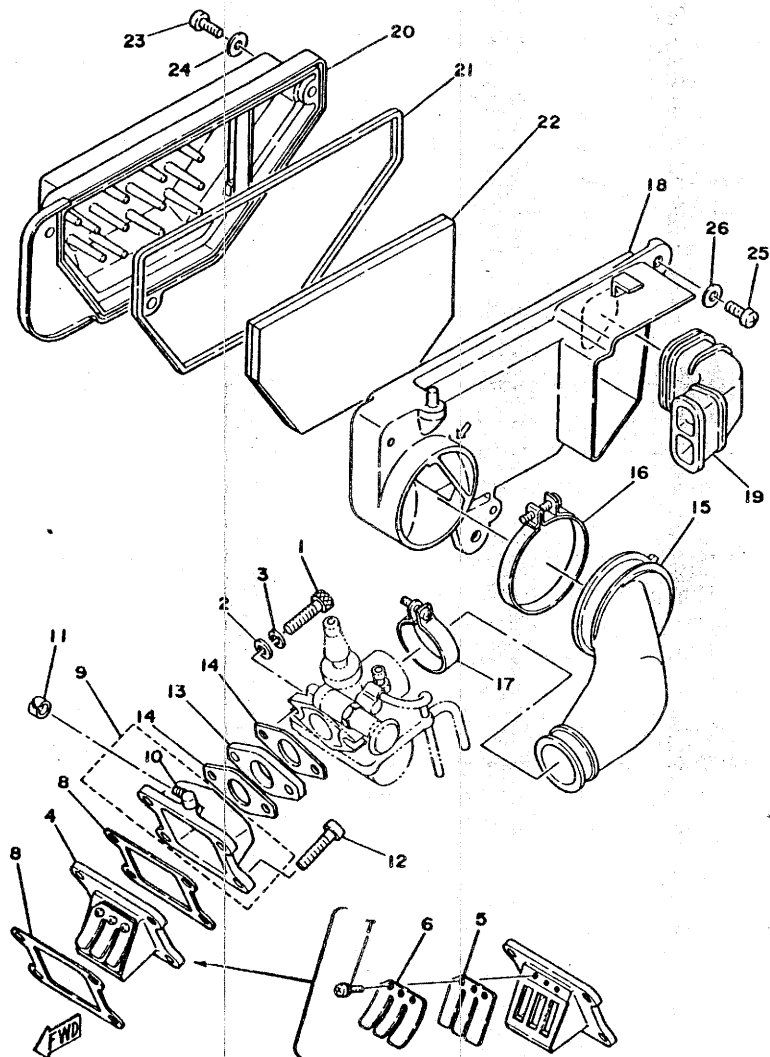
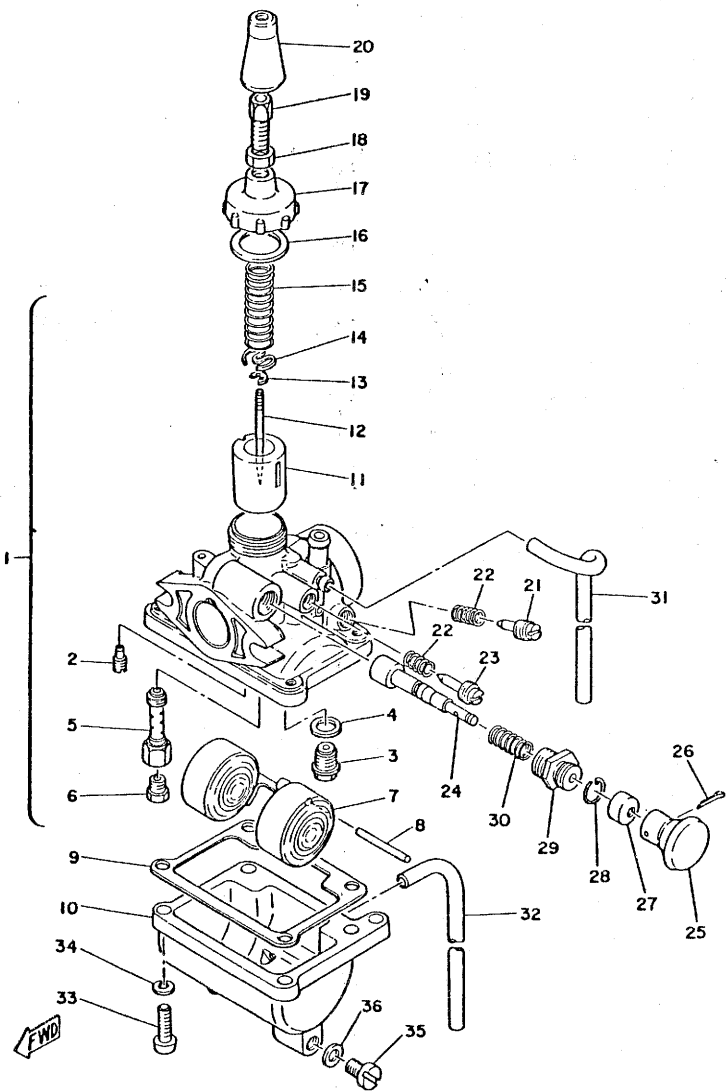


FIG. 5 INTAKE

REF. NO.	PART NO.	DESCRIPTION	Q'TY	REMARKS
1	91316-06025	BOLT	2	
2	92901-06200	WASHER, Plain	2	
3	92901-06100	WASHER, Spring	2	
4	2A3-13610-01	REED VALVE ASSY	1	
5	2A3-13613-00	•REED, valve	1	
6	2A3-13616-00	•STOPPER, reed valve	1	
7	97602-03108	•SCREW, Pan head with washer	3	
8	353-13621-00	GASKET, valve seat	2	
9	353-13565-00	JOINT, carburetor	1	
10	278-13552-02	•NOZZLE	1	
11	90468-02033	CLIP	1	
12	92501-06020	SCREW, Pan head	4	
13	353-13555-00	MANIFOLD, intake	1	
14	353-13556-00	GASKET, manifold	2	
15	2L4-14453-00	JOINT, air cleaner 1	1	
16	90460-64142	CLAMP, hose	1	
17	90460-33087	CLAMP, hose	1	
18	2U2-14411-01	CASE, air cleaner 1	1	
19	2U2-14437-01	DUCT	1	
20	2U2-14412-00	CAP, cleaner case 1	1	
21	2U2-14452-00	SEAL	1	
22	2L4-14451-00	ELEMENT, air cleaner	1	
23	92501-06014	SCREW, Pan head	3	
24	92901-06600	WASHER, Plate	3	
25	92501-06014	SCREW, Pan head	2	
26	90201-06055	WASHER, Plate	2	

B6

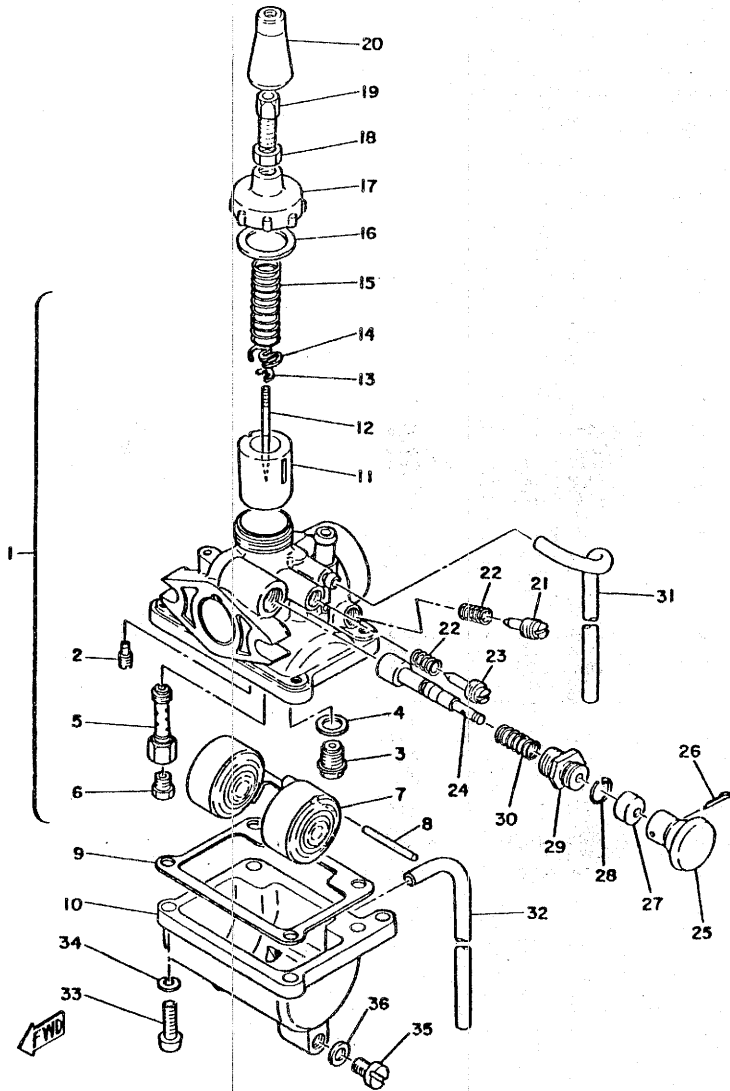
FIG. 6 CARBURETOR



REF. NO.	PART NO.	DESCRIPTION	Q'TY	REMARKS
1	2W1-14101-00	CARBURETOR ASSY 1	1	
2	260-14142-22	.JET, Pilot (#22.5)	1	
3	353-14190-12	.NEEDLE VALVE ASSY	1	
4	127-14195-00	.WASHER, needle valve	1	
5	127-14141-10	.NOZZLE, main	1	
6	127-14143-40	.JET, main (#200)	1	UR
	127-14143-42	.JET, main (#210)	1	UR (STD)
	127-14143-44	.JET, main (#220)	1	UR
7	353-14185-01	.FLOAT	1	
8	353-14186-00	.PIN, float	1	
9	353-14184-00	.GASKET, float chamber	1	
10	2U2-14181-06	.BODY, float chamber 1	1	
11	353-14112-15	.VALVE, throttle 1	1	
12	2W1-14116-15	.NEEDLE	1	
13	353-14137-00	.CLIP	1	
14	439-14136-01	.SEAT, sPrin&	1	
15	353-14131-00	.SPRING, throttle valve	1	
16	353-14126-00	.GASKET	1	
17	353-14158-00	.TOP, mixin& chamber	1	
18	802-14161-00	.NUT, cable adjustin&	1	
19	127-14124-20	.SCREW, cable adjustin&	1	
20	802-14169-00	.CAP	1	
21	353-14123-00	.SCREW, air adjustin&	1	
22	127-14134-00	.SPRING, air adjustin&	2	
23	102-14122-00	.SCREW, throttle	1	
24	304-14171-00	.PLUNGER, starter	1	
25	304-14261-00	.HOLDER	1	
26	91401-16015	.PIN, cotter	1	

B7

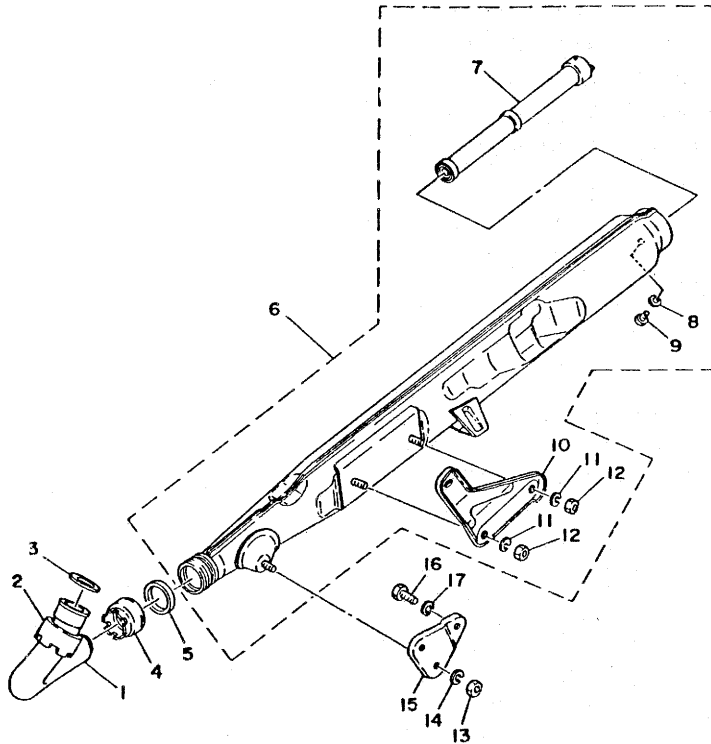
FIG. 6 CARBURETOR



REF. NO.	PART NO.	DESCRIPTION	Q'TY	REMARKS
27	132-14173-00	•COVER, Plunger cap	1	
28	353-14138-00	•CLIP, Plunger	1	
29	152-14174-00	•CAP, Plunger	1	
30	156-14135-00	•SPRING, Plunger	1	
31	183-14197-01	•PIPE	1	
32	183-14196-00	•PIPE	1	
33	98501-04014	•SCREW, Pan head	4	
34	92901-04100	•WASHER, sPrin&	4	
35	266-14191-00	•PLUG, drain	1	
36	266-14126-00	•GASKET	1	

B8

FIG. 7 EXHAUST



REF. NO.	PART NO.	DESCRIPTION	Q'TY	REMARKS
1	353-14611-00	PIPE, exhaust 1	1	
2	1L4-14612-00	NUT, ring	1	
3	132-14613-00	GASKET, exhaust pipe	1	
4	132-14713-00	NUT, muffler joint	1	
5	132-14714-01	GASKET, muffler	1	
6	3N9 3W2-14710-00	MUFFLER ASSY 1	1	
7	353-14753-01	.SILENCER, exhaust	1	
8	92901-05100	.WASHER, sPring	1	
9	98501-05008	.SCREW, Pan head	1	
10	2E1-14772-00	.STAY, muffler 2	1	
11	92901-06100	.WASHER, sPring	2	
12	95301-06600	.NUT	2	
13	95301-08600	NUT	1	
14	92901-08100	WASHER, sPring	1	
15	353-14771-00	STAY, muffler 1	1	
16	97301-08018	BOLT	2	
17	92901-08100	WASHER, sPring	2	

FWD

B9

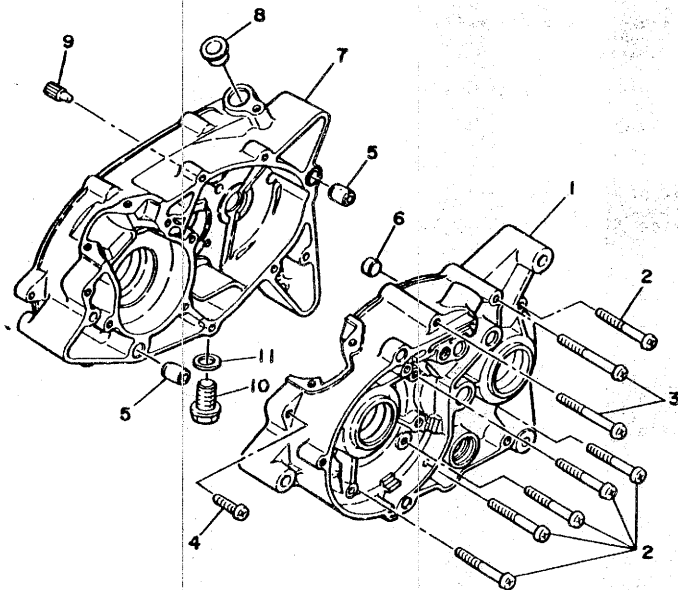


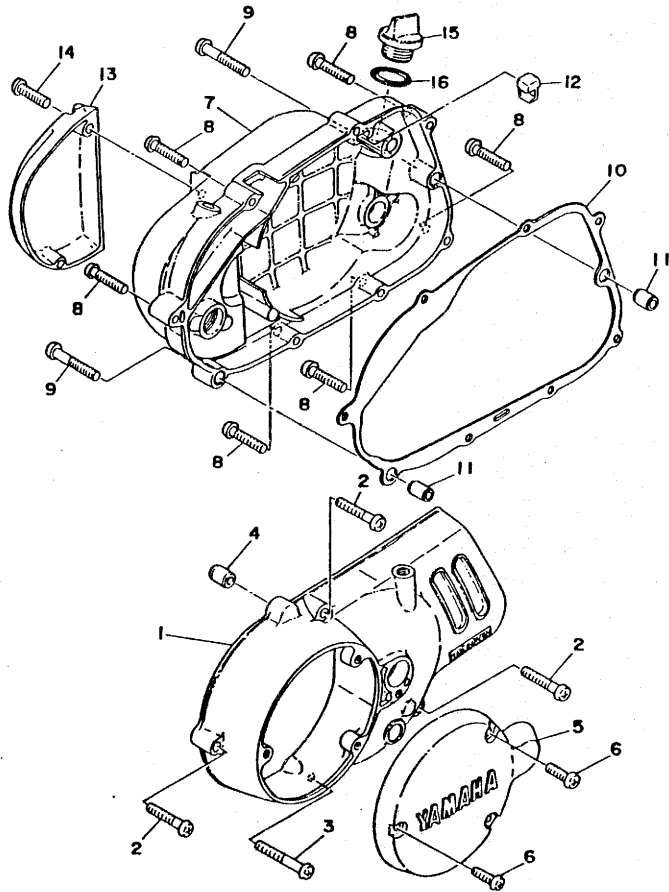
FIG. 8 CRANKCASE

REF. NO.	PART NO.	DESCRIPTION	Q'TY	REMARKS
1	353-15111-00	CRANKCASE 1	1	
2	92501-06050	SCREW, Pan head	8	
3	92501-06055	SCREW, Pan head	2	
4	92501-06025	SCREW, Pan head	1	
5	91830-22016	PIN, dowel	2	
6	90334-12009	PLUG, straight	2	
7	353-15121-02	CRANKCASE 2	1	
8	90381-08002	BUSH, solid	1	
9	492-15387-00	STOPPER	1	
10	90340-12005	PLUG, straight screw	1	
11	90430-12038	GASKET	1	

FWD

B10

FIG. 9 CRANKCASE COVER

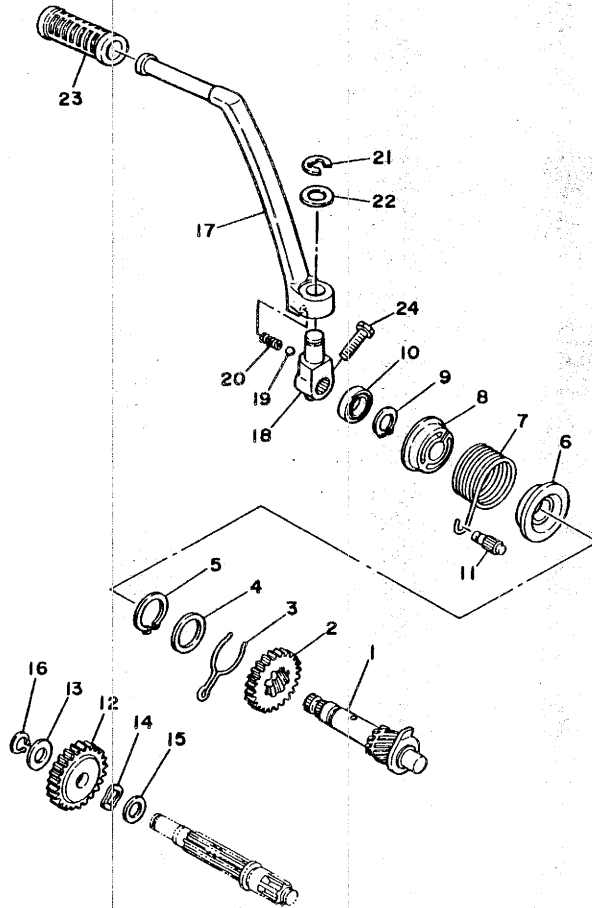


REF. NO.	PART NO.	DESCRIPTION	Q'TY	REMARKS
1	353-15411-00-Y4	COVER, crankcase 1	1	metallic silver
2	92501-06030	SCREW, Pan head	3	
3	92501-06045	SCREW, Pan head	1	
4	91830-21014	PIN, dowel	2	
5	353-15415-00-Y4	COVER, Generator	1	metallic silver
6	92501-06020	SCREW, Pan head	3	
7	353-15421-00-Y4	COVER, crankcase 2	1	metallic silver
8	92501-06030	SCREW, Pan head	7	
9	92501-06040	SCREW, Pan head	2	
10	353-15451-00	GASKET, crankcase cover	1	
11	91830-21014	PIN, dowel	2	
12	353-15437-02	SCRAPER, oil	1	
13	353-15416-00-Y4	COVER, oil Pump	1	metallic silver
14	92501-06025	SCREW, Pan head	2	
15	353-15362-00	COVER, oil Pump	1	
16	93210-21190	O-RING	1	

FWD

B11

FIG. 10 KICK STARTER

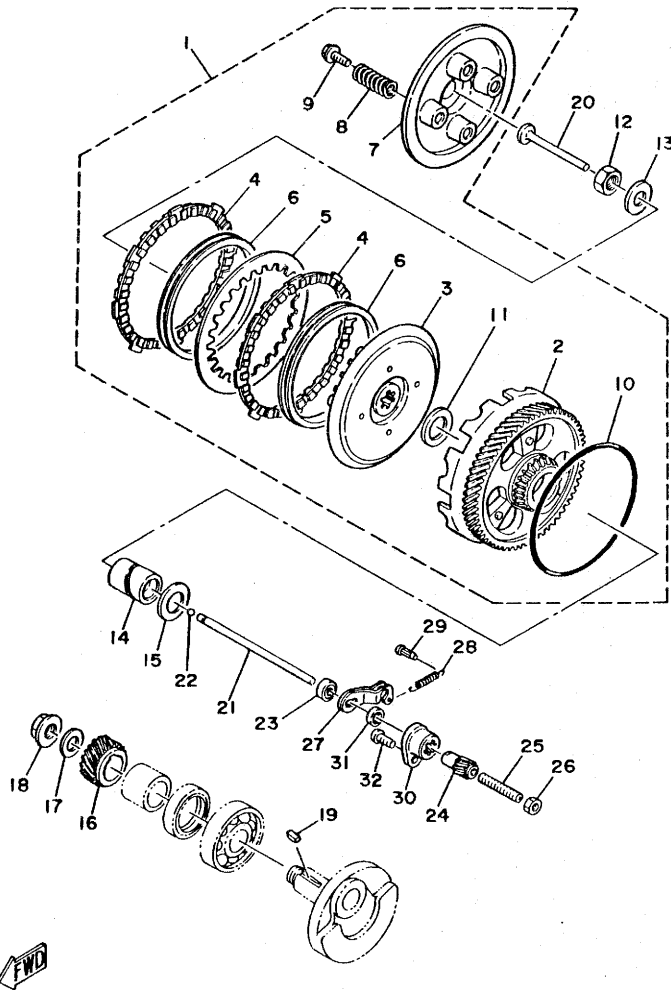


REF. NO.	PART NO.	DESCRIPTION	Q'TY	REMARKS
1	353-15660-02	KICK AXLE ASSY	1	
2	353-15641-00	GEAR, kick (24T)	1	
3	90468-26038	CLIP	1	
4	117-15644-00	SHIM	1	
5	93410-25017	CIRCLIP	1	
6	132-15664-01	GUIDE, sPrinG	1	
7	90508-26136	SPRING, torsion	1	
8	132-15676-01	COVER, sPrinG	1	
9	93410-15005	CIRCLIP	1	
10	93109-15001	OIL SEAL	1	
11	248-15668-00	STOPPER	1	
12	353-15651-00	GEAR, kick idle (25T)	1	
13	90201-13202	WASHER, Plate	1	
14	90206-15021	WASHER, wave	1	
15	102-18137-00-10	WASHER 1	1	
16	93410-12003	CIRCLIP	1	
17	353-15611-01-93	CRANK, kick	1	chrome-Plated
18	337-15621-01-91	BOSS, kick crank	1	uni chrome
19	93507-32009	BALL	1	
20	90501-12081	SPRING, comPression	1	
21	93430-10016	CIRCLIP	1	
22	90201-15340	WASHER, Plate	1	
23	156-15618-01	COVER, kick lever	1	
24	97311-06025	BOLT	1	



B12

FIG. 11 CLUTCH

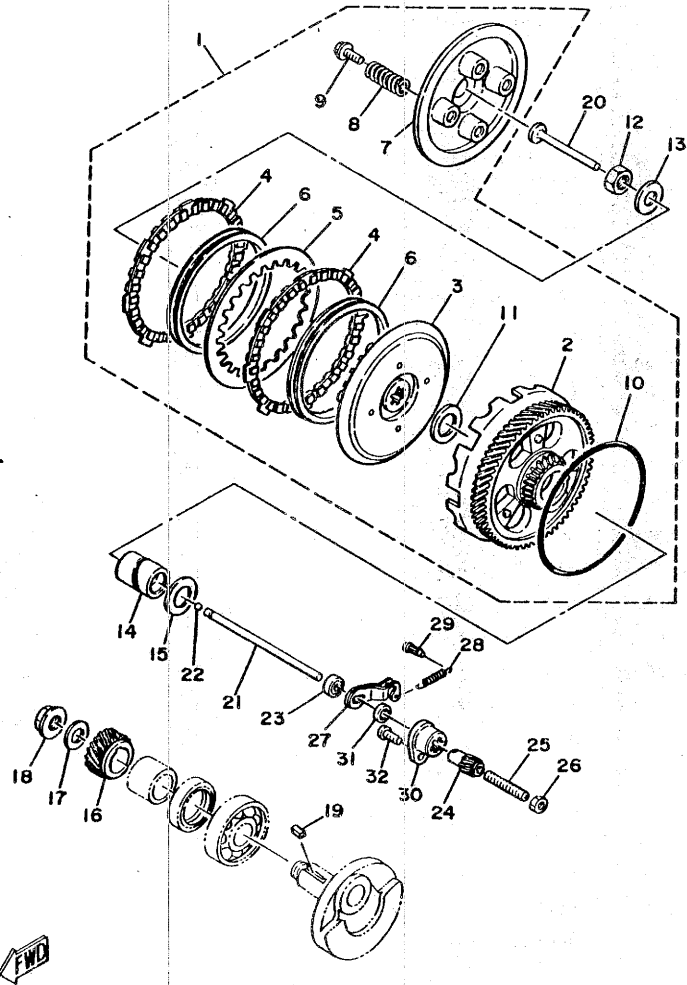


REF. NO.	PART NO.	DESCRIPTION	Q'TY	REMARKS
1	2U2-16301-00	CLUTCH ASSY	1	
2	2U2-16150-00	•PRIMARY DRIVEN GEAR COMP.	1	
3	257-16371-01	•BOSS, clutch	1	
4	131-16321-00	•PLATE, friction	2	
5	131-16324-00	•PLATE, clutch 1	1	
6	131-16367-00	•RING, cushion	2	
7	257-16351-00	•PLATE, Pressure 1	1	
8	90501-20122	•SPRING, compression	4	
9	90119-05001	•BOLT, with washer	4	
10	93210-99103	•O-RING	1	
11	122-16164-00	•PLATE, thrust 2	1	
12	90170-12060	NUT	1	
13	90208-12015	WASHER, conical spring	1	
14	90560-17123	SPACER	1	
15	122-16164-00	PLATE, thrust 2	1	
16	353-16111-01	GEAR, Primary drive (.19T)	1	
17	90208-12015	WASHER, conical spring	1	
18	90179-12244	NUT	1	
19	90282-05005	KEY, straight	1	
20	137-16356-00	ROD, Push 1	1	
21	353-16357-00	ROD, Push 2	1	
22	93503-16010	BALL	1	
23	257-15389-00	SEAL, Push rod	1	
24	241-16341-01	SCREW, Push	1	
25	90113-06013	BOLT, set	1	
26	95301-06700	NUT	1	
27	451-16342-00	LEVER, Push	1	
28	90506-07066	SPRING, tension	1	

B13

FIG. 11 CLUTCH

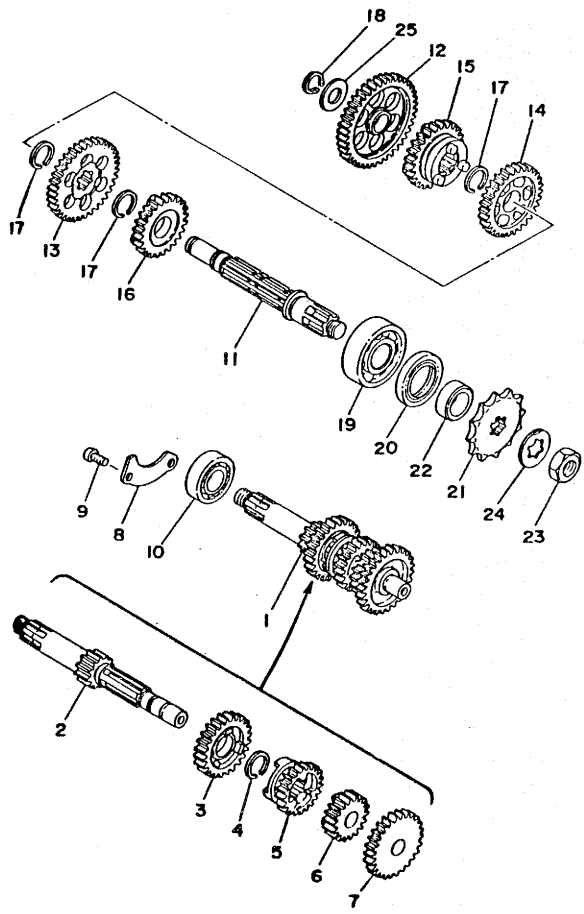
REF. NO.	PART NO.	DESCRIPTION	Q'TY	REMARKS
29	132-16346-00	HOOK, sPrinG	1	
30	353-16396-00	HOUSING, Push screw	1	
31	93104-11028	OIL SEAL	1	
32	92501-06015	SCREW, Pan head	1	



B14

FIG. 12 TRANSMISSION

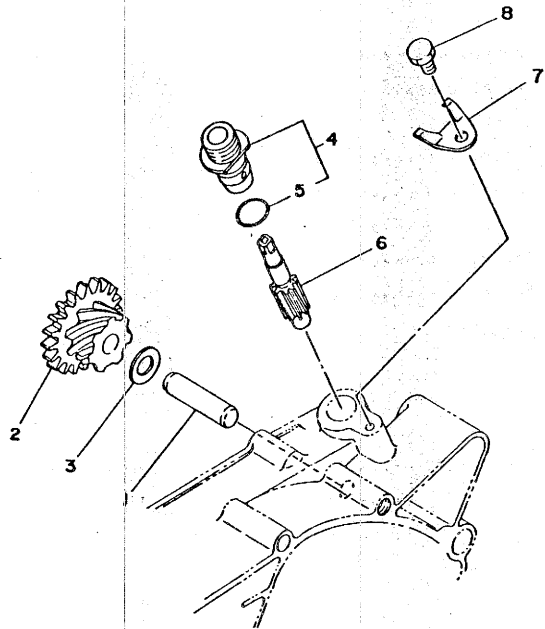
REF. NO.	PART NO.	DESCRIPTION	Q'TY	REMARKS
1	353-17410-10	MAIN AXLE COMP.	1	
2	353-17411-10	AXLE, main (12T)	1	
3	353-17141-12	GEAR, 4th Pinion (24T)	1	
4	93440-16030	CIRCLIP	1	
5	353-17131-00	GEAR, 3rd Pinion (21T)	1	
6	353-17121-11	GEAR, 2nd Pinion (17T)	1	
7	353-17151-00	GEAR, 5th Pinion (26T)	1	
8	353-17471-00	PLATE, cover	1	
9	92501-06012	SCREW, Pan head	2	
10	93306-20303	BEARING (B6203Z)	1	
11	598-17421-00	AXLE, drive	1	
12	353-17211-01	GEAR, 1st wheel (39T)	1	
13	353-17221-00	GEAR, 2nd wheel (34T)	1	
14	353-17231-00	GEAR, 3rd wheel (30T)	1	
15	353-17241-00	GEAR, 4th wheel (27T)	1	
16	353-17251-00	GEAR, 5th wheel (25T)	1	
17	93440-16030	CIRCLIP	3	
18	93410-13004	CIRCLIP	1	
19	93306-30301	BEARING (B6303)	1	
20	93102-25017	OIL SEAL	1	
21	257-17461-21	SPROCKET, drive (12T)	1	UR (STD)
	257-17461-11	SPROCKET, drive (11T)	1	UR
	257-17461-31	SPROCKET, drive (13T)	1	UR
22	90387-17137	COLLAR	1	
23	90179-12181	NUT	1	
24	90215-13019	WASHER, lock	1	
25	257-17219-00	SHIM (0.6T)	1	



B15

FIG. 13 TACHOMETER GEAR

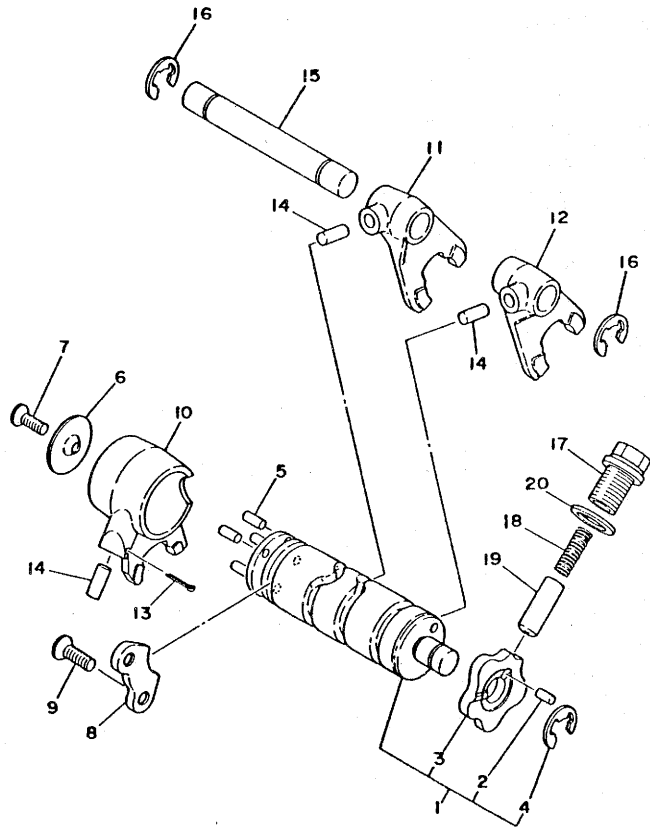
REF. NO.	PART NO.	DESCRIPTION	Q'TY	REMARKS
1	237-17861-00	AXLE, drive gear	1	
2	353-17831-00	GEAR, drive (7T/21T)	1	
3	248-17837-00	SHIM	1	
4	353-17810-00	HOUSING ASSY, tachometer	1	
5	93210-13016	O-RING	1	
6	214-17841-01	GEAR, driven (9T)	1	
7	214-17812-00	STOPPER	1	
8	97301-06010	BOLT	1	



FWD

C2

FIG. 14 SHIFT CAM.FORK

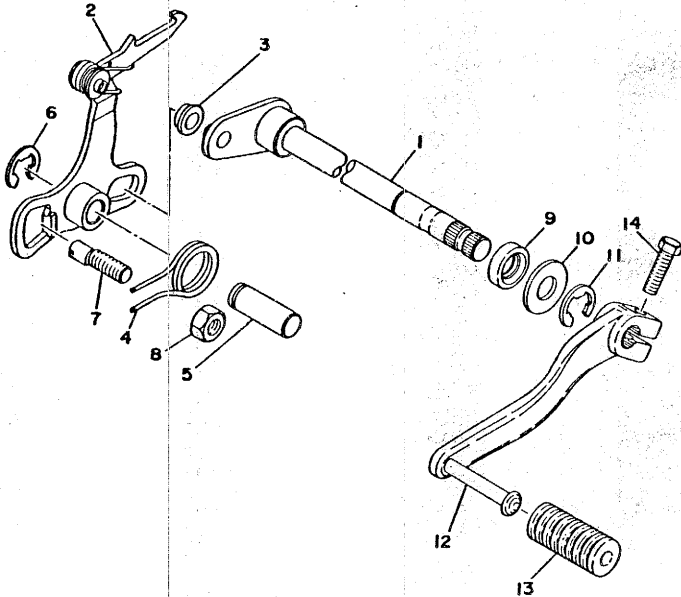


REF. NO.	PART NO.	DESCRIPTION	Q'TY	REMARKS
1	353-18540-01	SHIFT CAM ASSY	1	
2	93604-08071	.PIN, dowel	1	
3	353-18141-01	.PLATE, stopPer	1	
4	93440-12026	.CIRCLIP	1	
5	93604-10011	PIN, dowel	4	
6	214-18561-00	PLATE, side 1	1	
7	98701-05012	SCREW, flat head	1	
8	353-18562-00	PLATE, stopPer 2	1	
9	92701-06012	SCREW, flat head	2	
10	353-18511-01	FORK, shift 1	1	
11	353-18512-01	FORK, shift 2	1	
12	353-18513-01	FORK, shift 3	1	
13	91401-25017	PIN, cotter	1	
14	93606-14081	PIN, dowel	3	
15	214-18531-00	BAR, shift fork Guide 1	1	
16	93430-10016	CIRCLIP	2	
17	90109-14485	BOLT	1	
18	90501-09292	SPRING, comPression	1	
19	353-18547-00	STOPPER, cam	1	
20	137-15353-00	GASKET, drain	1	

FWD

C3

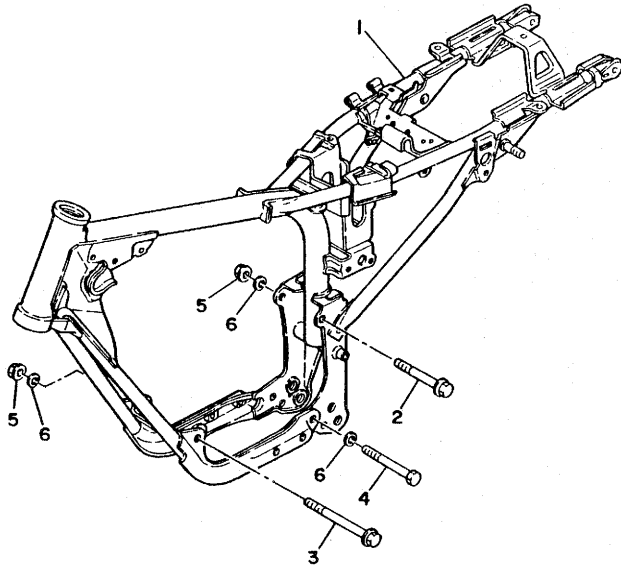
FIG. 15 SHIFT SHAFT-PEDAL



REF. NO.	PART NO.	DESCRIPTION	Q'TY	REMARKS
1	353-18101-00	SHIFT SHAFT ASSY	1	
2	353-18120-00	SHIFT LEVER ASSY	1	
3	214-18178-00	ROLLER, shift lever	1	
4	90508-32054	SPRING, torsion	1	
5	367-18197-00	SHAFT	1	
6	93430-10016	CIRCLIP	1	
7	90149-08094	SCREW	1	
8	95301-08600	NUT	1	
9	93101-12004	OIL SEAL	1	
10	90201-12575	WASHER, Plate	1	
11	93430-10016	CIRCLIP	1	
12	353-18111-00-93	PEDAL, shift	1	
13	132-18113-01	COVER, shift Pedal	1	
14	97321-06020	BOLT	1	

FIG. 16 FRAME

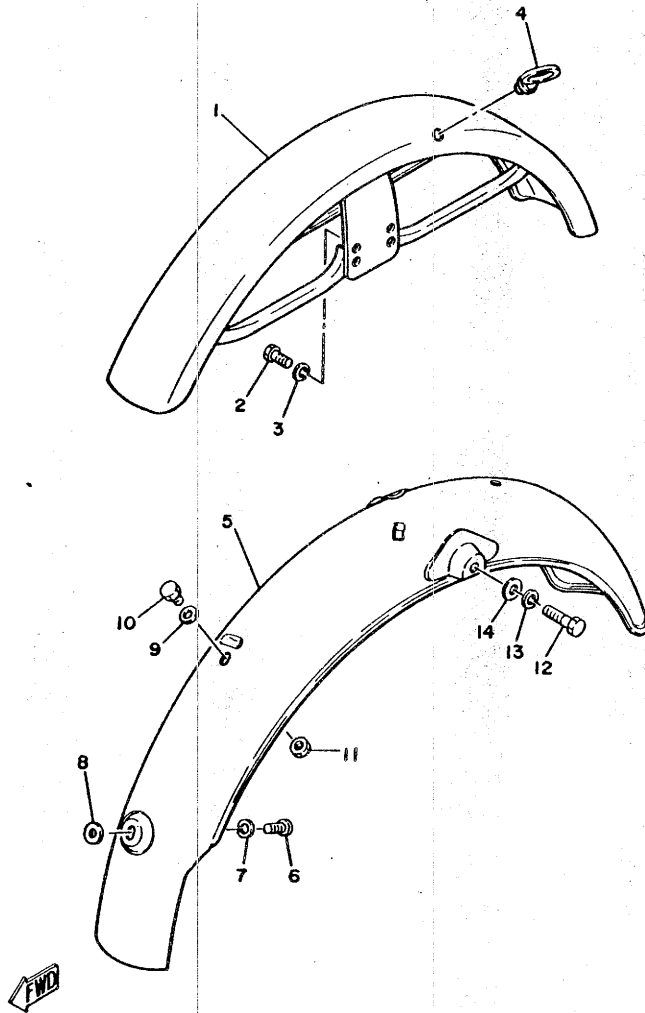
REF. NO.	PART NO.	DESCRIPTION	Q'TY	REMARKS
1	2L8-21110-00-33	FRAME COMP	1	yamaha black
2	95821-08090	BOLT, flange	1	
3	95821-08120	BOLT, flange	1	
4	90101-08284	BOLT	1	
5	95701-08100	NUT, flange	2	
6	92901-08100	WASHER, spring	3	



FWD

C5

FIG. 17 FRONT FENDER-REAR FENDER

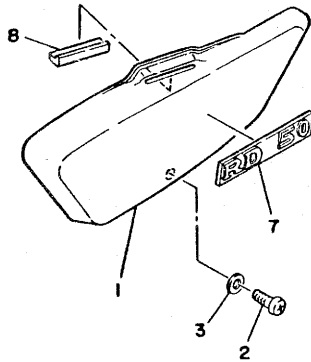
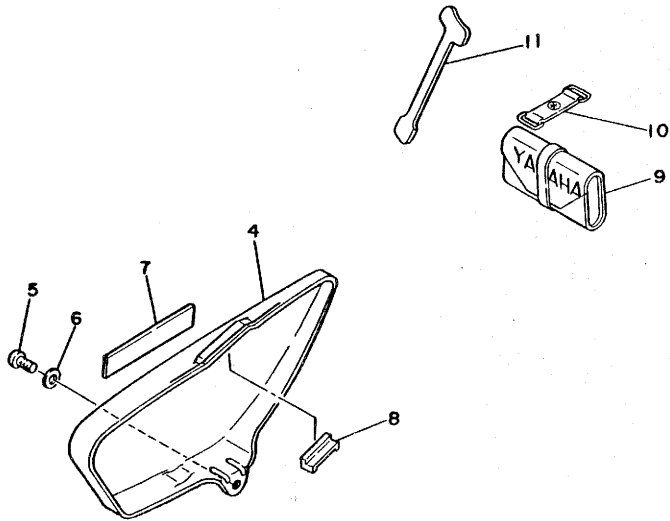


REF. NO.	PART NO.	DESCRIPTION	Q'TY	REMARKS
1	2L4-21510-10-93	FRONT FENDER COMP.	1	chrome-Plated
2	97301-06016	BOLT	4	
3	92901-06100	WASHER, sPrin&	4	
4	1A0-21518-00	HOLDER, cable	1	
5	2L5-21610-01-93	REAR FENDER COMP.	1	chrome-Plated
6	97301-06016	BOLT	1	
7	92901-06100	WASHER, sPrin&	1	
8	92901-06600	WASHER, Plate	1	
9	92901-06600	WASHER, Plate	1	
10	97301-06012	BOLT	1	
11	95301-06600	NUT	1	
12	97301-08040	BOLT	2	
13	92901-08100	WASHER, sPrin&	2	
14	92901-08600	WASHER, Plate	2	

C6

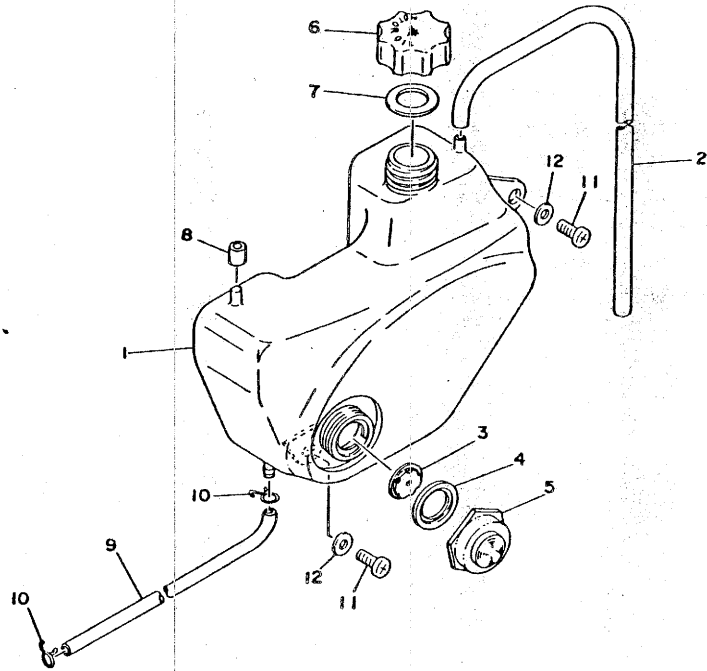
FIG. 18 SIDE COVER. TOOL

REF. NO.	PART NO.	DESCRIPTION	Q'TY	REMARKS
1	353-21711-00-T5	COVER, side (L.H)	1	UR maxim red
	353-21711-00-29	COVER, side (L.H)	1	UR candy blue
2	92501-06015	SCREW, Pan head	1	
3	90201-06067	WASHER, Plate	1	
4	353-21721-00-T5	COVER, side (R.H)	1	UR maxim red
	353-21721-00-29	COVER, side (R.H)	1	UR candy blue
5	92501-06015	SCREW, Pan head	1	
6	90201-06067	WASHER, Plate	1	
7	2L4-21737-00	EMBLEM	2	
8	353-21717-00	DAMPER, side cover	2	
9	2U2-28100-10	TOOL KIT	1	
10	288-21376-00	BAND, tool	1	
11	353-15361-00	GAUGE, level	1	



C7

FIG. 19 OIL TANK

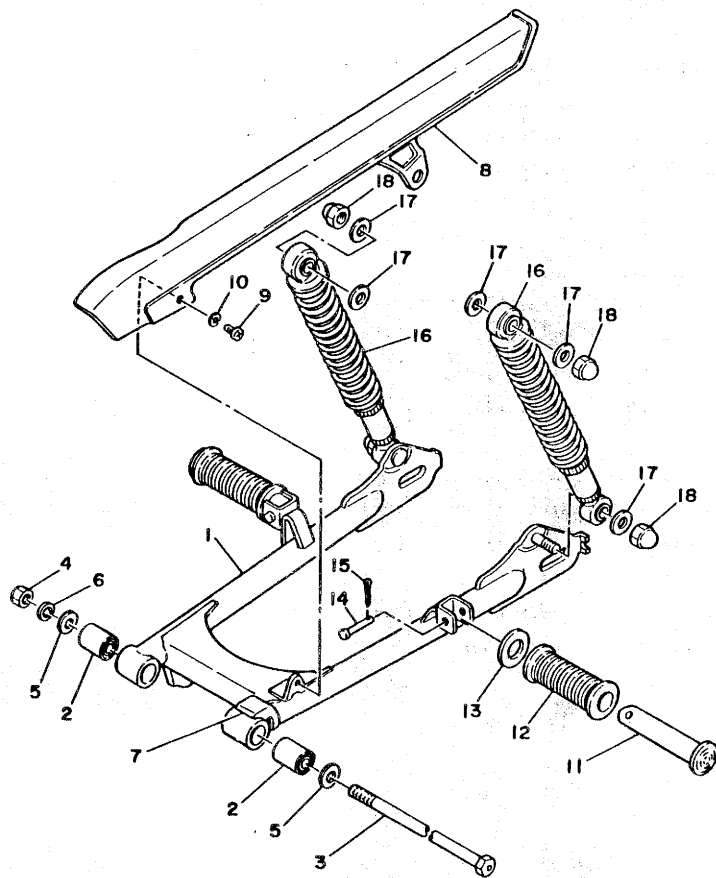


REF. NO.	PART NO.	DESCRIPTION	Q'TY	REMARKS
1	353-21751-00	TANK, oil	1	
2	353-21745-00	PIPE, oil tank breather	1	
3	353-21761-00	GAUGE, level	1	
4	353-21763-00	GASKET, level gauge	1	
5	353-21764-00	LENS, level gauge	1	
6	296-21771-62	BODY, caP	1	
7	296-21772-00	GASKET, caP	1	
8	353-21778-00	DAMPER, locatin& 1	2	
9	90445-09107	HOSE	1	
10	90467-08003	CLIP	2	
11	92501-06015	SCREW, Pan head	2	
12	90201-06067	WASHER, Plate	2	

FWD

C8

FIG. 20 REAR ARM SUSPENSION



REF. NO.	PART NO.	DESCRIPTION	QTY	REMARKS
1	2J9-22110-01-33	REAR ARM COMP.	1	yamaha black
2	102-22123-00	BUSH 1	2	
3	353-22141-02	SHAFT, Pivot	1	
4	95301-10600	NUT	1	
5	92901-10600	WASHER, Plate	2	
6	92901-10100	WASHER, sPring	1	
7	183-22151-00	SEAL, Guard	1	
8	2L4-22311-00-93	CASE, chain	1	chrome-Plated
9	98501-05008	SCREW, Pan head	1	
10	92901-05100	WASHER, sPring	1	
11	120-27431-00	FOOTREST, rear 1	2	
12	120-27433-00	COVER, rear footrest	2	
13	90201-20279	WASHER, Plate	2	
14	90240-06009	PIN, clevis	2	
15	91401-16012	PIN, cotter	2	
16	2L4-22210-01	SHOCK ABSORBER ASSY, rear	2	
17	90201-12175	WASHER, Plate	6	
18	95304-12800	NUT, crown	4	



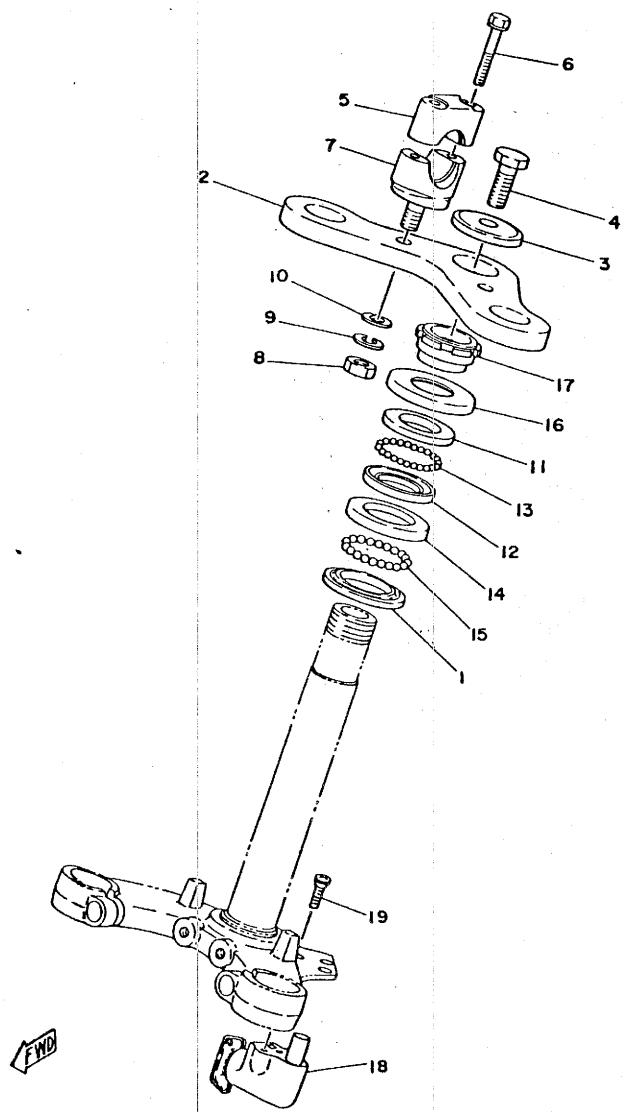
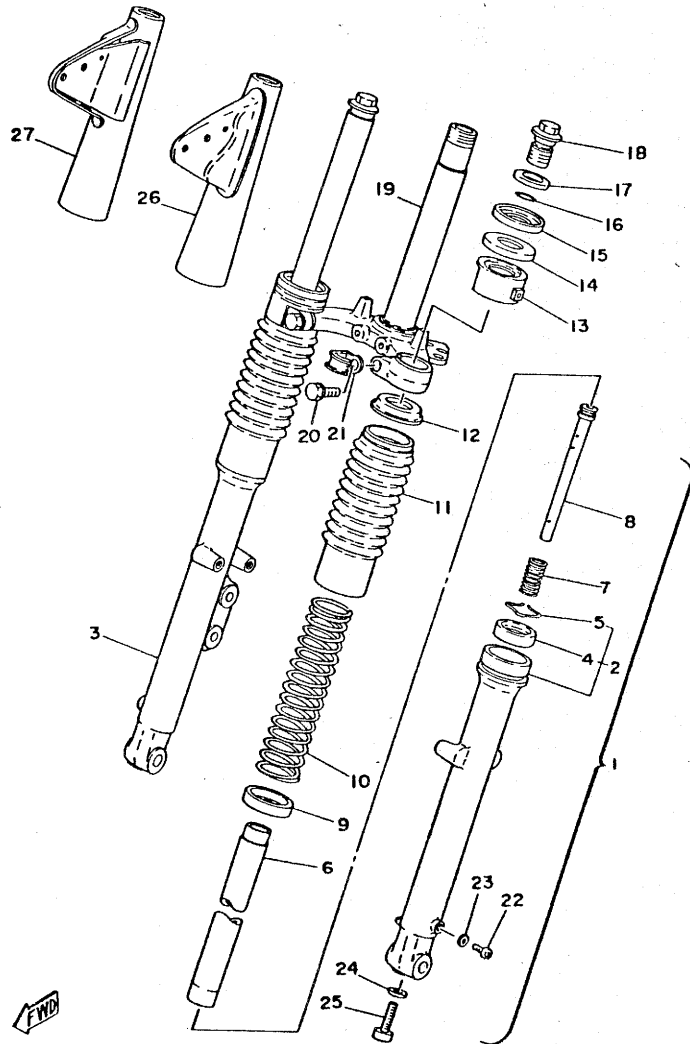


FIG. 21 STEERING

REF. NO.	PART NO.	DESCRIPTION	Q'TY	REMARKS
1	156-23411-00	RACE, ball 1	1	
2	185-23435-00-33	CROWN, handle	1	yamaha black
3	90209-10021	WASHER	1	
4	90105-10006	BOLT, washer based	1	
5	462-23441-00-98	HOLDER, handle upper	2	low gloss black
6	90119-06017	BOLT, with washer	4	
7	462-23442-00-98	HOLDER, handle lower	2	low gloss black
8	95301-10600	NUT	2	
9	92901-10100	WASHER, spring	2	
10	92901-10600	WASHER, Plate	2	
11	122-23411-00	RACE, ball 1	1	
12	122-23412-00	RACE, ball 2	1	
13	93503-16010	BALL	22	
14	156-23412-00	RACE, ball 2	1	
15	93501-04011	BALL	19	
16	122-23416-00	COVER, ball race 2	1	
17	90179-25051	NUT	1	
18	353-23480-01	STEERING LOCK ASSY	1	
19	98601-05012	SCREW, oval head	2	

C10

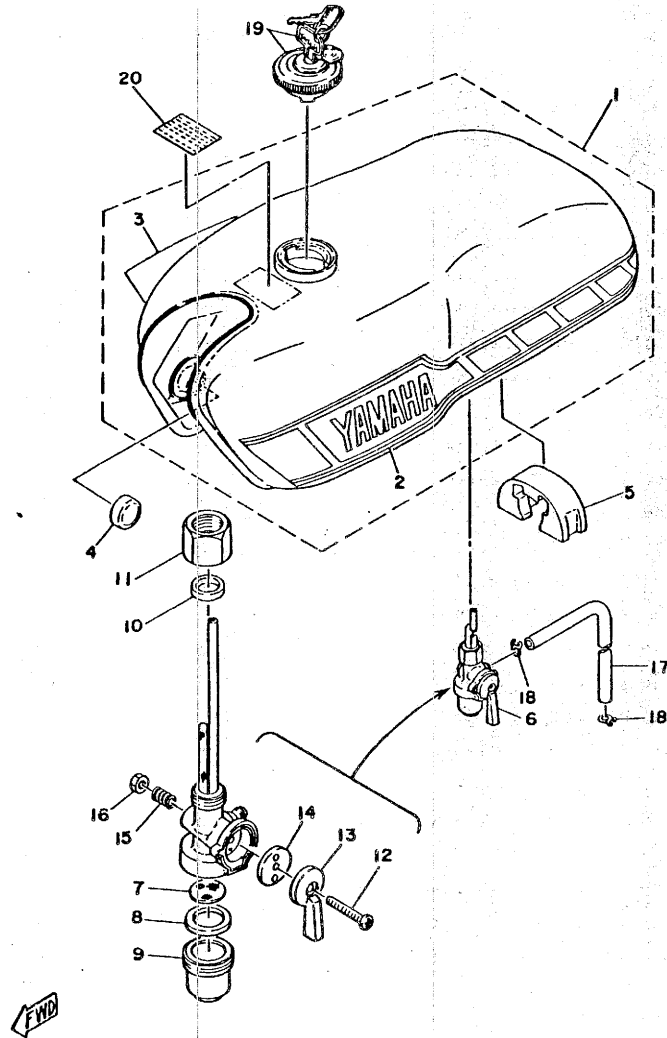
FIG. 22 FRONT FORK



REF. NO.	PART NO.	DESCRIPTION	Q'TY	REMARKS
1	2L6-23101-01	FRONT FORK ASSY	1	
2	2U2-23126-00	.TUBE, outer 1	1	
3	2U2-23136-00	.TUBE, outer 2	1	
4	1T8-23145-00	..OIL SEAL	2	
5	1T8-23156-00	..CLIP, oil seal	2	
6	2L6-23110-00	.INNER TUBE COMP.1	2	
7	2U2-23151-00	.SPRING, rebound	2	
8	2L6-23170-00	.CYLINDER COMP., front fork	2	
9	596-23117-00	.GUIDE, sPring	2	
10	481-23141-01	.SPRING, front fork	2	
11	428-23191-00	.BOOT	2	
12	209-23142-40	.SEAT, sPring uPPer	2	
13	1Y1-23122-00	.COVER, outer 1	2	
14	207-23163-00	.GASKET	2	
15	207-23116-01	.GUIDE, cover lower	2	
16	1T8-23114-00	.GASKET	2	
17	1T8-23112-00	.WASHER, caP	2	
18	1T8-23111-00	.BOLT, caP	2	
19	353-23340-91-33	.UNDER BRACKET COMP.	1	yamaha black
20	1M3-23346-00	.BOLT 1	2	
21	260-23318-40	.HOLDER, cable 1	1	
22	122-23119-01	.PLUG, drain	2	
23	122-23129-00	.GASKET, drain Plug	2	
24	509-23158-L0	.GASKET	2	
25	278-23181-50	.BOLT, hexaGon socket head	2	
26	2L6-23121-00-33	COVER, uPPer 1	1	yamaha black
27	2L6-23131-00-33	COVER, uPPer 2	1	yamaha black

C11

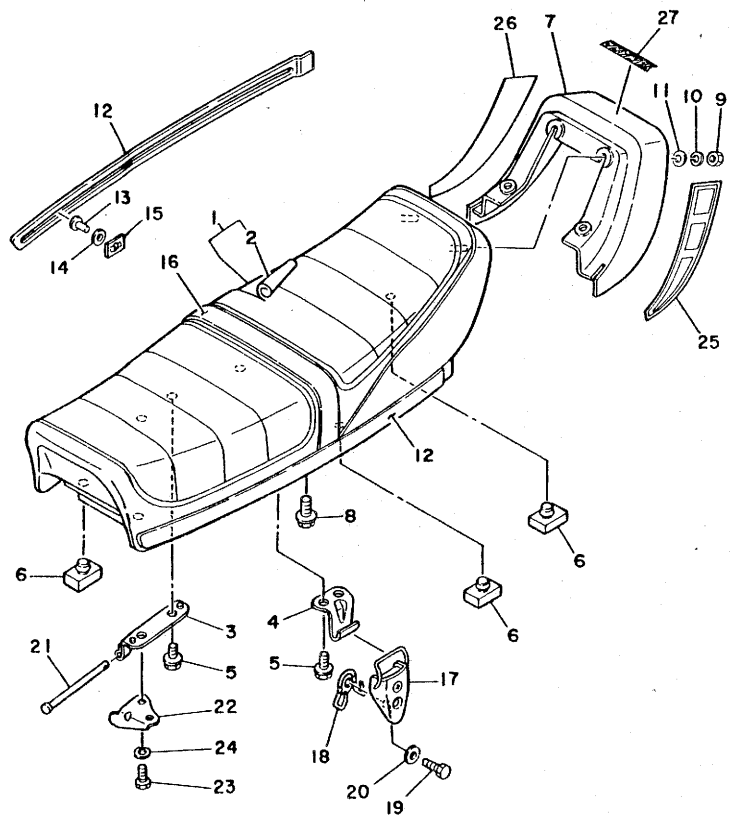
FIG. 23 FUEL TANK



REF. NO.	PART NO.	DESCRIPTION	Q'TY	REMARKS
1	2L4-24110-00-X2	FUEL TANK COMP.	1	UR maxim red
	2L4-24110-00-X3	FUEL TANK COMP.	1	UR candy blue
2	2L4-24244-00	.GRAPHIC, fuel tank 1	1	
3	2L4-24245-00	.GRAPHIC, fuel tank 2	1	
4	122-24181-00	DAMPER, locating 1	2	
5	353-24182-00	DAMPER, locating 2	1	
6	367-24500-04	FUEL COCK ASSY 1	1	
7	355-24515-00	.NET, filter 2	1	
8	102-24522-01	.GASKET	1	
9	122-24521-00	.CUP, filter	1	
10	122-24532-00	.GASKET	1	
11	603-24531-01	.NUT	1	
12	355-24535-00	.SCREW, lever fitting	1	
13	355-24524-01	.LEVER, cock	1	
14	355-24523-00	.VALVE	1	
15	355-24518-01	.SPRING, lever	1	
16	95301-05600	.NUT	1	
17	90445-09079	HOSE	1	
18	90467-08003	CLIP	2	
19	127-24650-02	CAP ASSY	1	
20	1G7-24164-00	EMBLEM 4	1	

C12

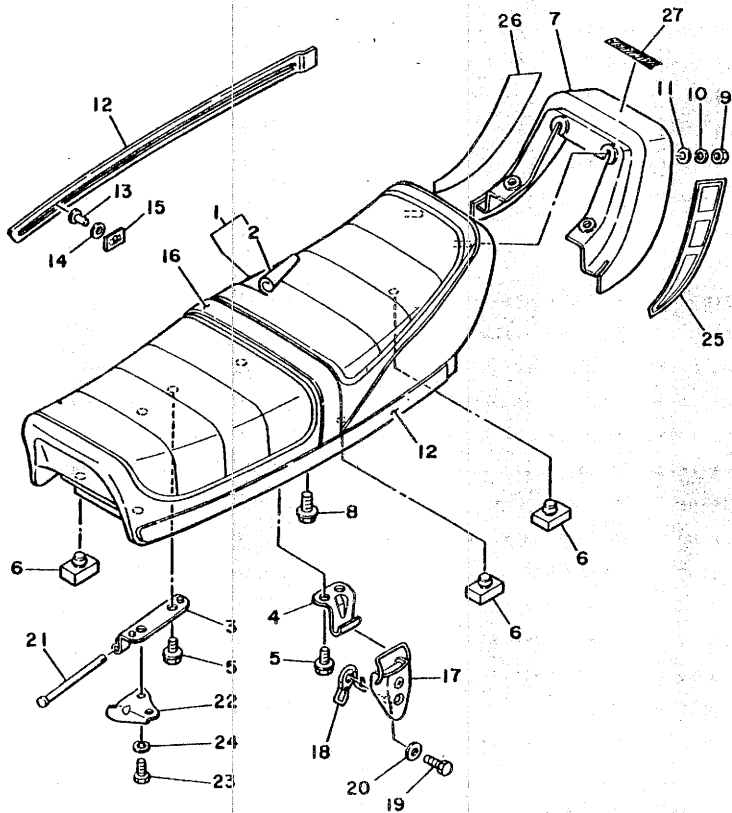
FIG. 24 SEAT



REF. NO.	PART NO.	DESCRIPTION	Q'TY	REMARKS
1	2L5-W2472-01	DOUBLE SEAT ASSY	1	
2	2L5-24731-01	.COVER, double seat	1	
3	353-24726-00	HINGE, seat	1	
4	214-24728-00-33	BRACKET, seat	1	yamaha black
5	90101-06304	BOLT	3	
6	214-24724-00	DAMPER, seat	5	
7	2L5-24756-00-T5	COVER, tail	1	UR maxim red
	2L5-24756-00-29	COVER, tail	1	UR candy blue
8	90101-08305	BOLT	2	
9	95301-05600	NUT	4	
10	92901-05100	WASHER, sPring	4	
11	92901-05600	WASHER, Plate	4	
12	2L5-24785-00-T5	MOLD, seat (LEFT)	1	UR maxim-red
	2L5-24785-00-29	MOLD, seat (LEFT)	1	UR candy blue
	2L5-24785-10-T5	MOLD, seat (RIGHT)	1	UR maxim red
	2L5-24785-10-29	MOLD, seat (RIGHT)	1	UR candy blue
13	1J7-24789-00	RIVET	4	
14	1J7-24722-00	WASHER, sPecial	4	
15	1J7-24735-00	SPEED NUT	4	
16	2L5-24734-00	BAND, seat	1	
17	2A3-24705-00	SEAT LEVER ASSY	1	
18	341-24818-02	HOOK, helmet	1	
19	97301-06025	BOLT	1	
20	92901-06600	WASHER, Plate	1	
21	1K8-24774-00	PIN	1	
22	353-24768-00	STOPPER	1	
23	97301-06016	BOLT	1	
24	92901-06100	WASHER, sPring	1	

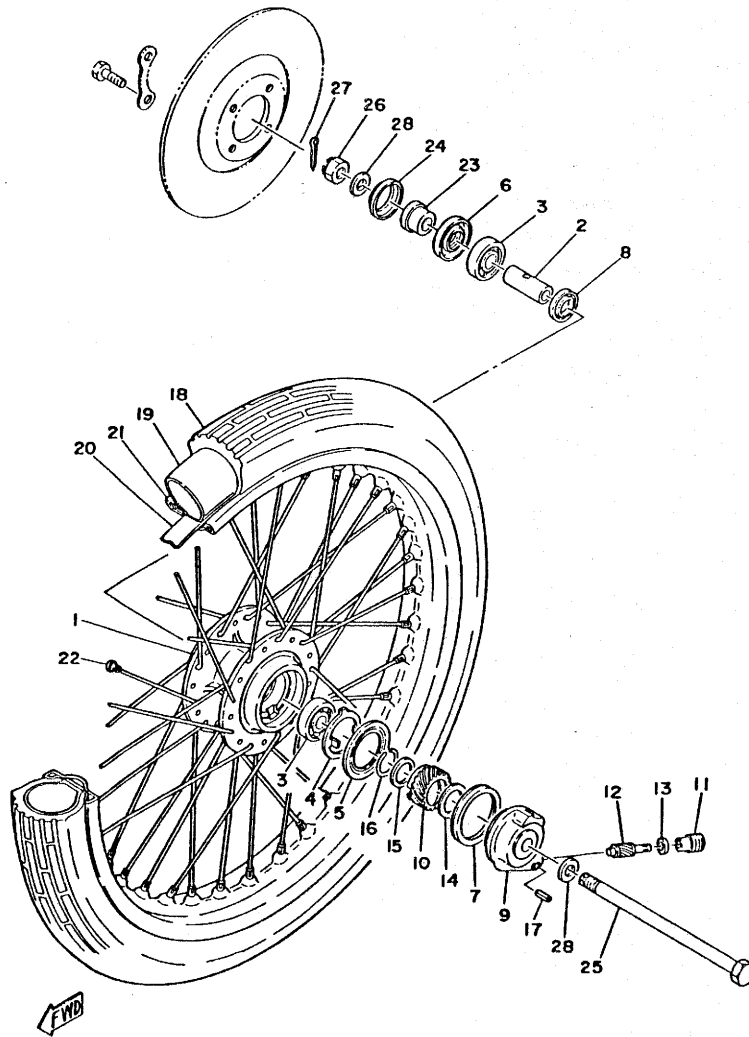
FIG. 24 SEAT

REF. NO.	PART NO.	DESCRIPTION	Q'TY	REMARKS
25	2L4-24757-00	GRAPHIC, tail cover	1	
26	2L4-24767-00	GRAPHIC, tail cover	1	
27	1J7-24786-10	EMBLEM	1	



C14

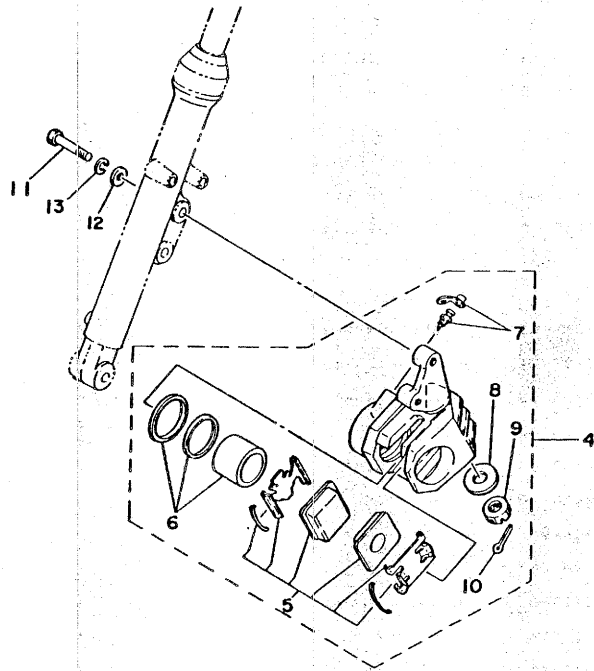
FIG. 25 FRONT WHEEL



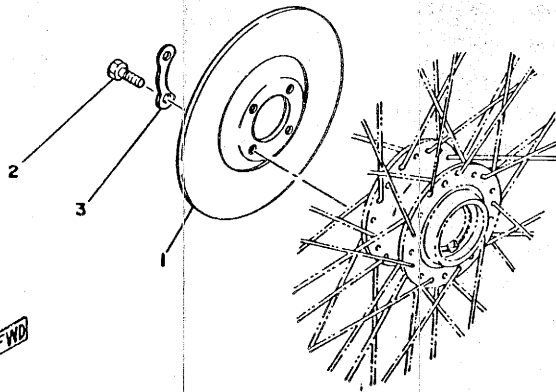
REF. NO.	PART NO.	DESCRIPTION	Q'TY	REMARKS
1	390-25111-00	HUB, front	1	
2	90560-12138	SPACER	1	
3	93306-30101	BEARING (B6301)	2	
4	341-25149-00	CLUTCH, meter	1	
5	341-25846-00	RETAINER, clutch	1	
6	93106-20002	OIL SEAL	1	
7	93105-45017	OIL SEAL	1	
8	109-25315-00	FLANGE, spacer	1	
9	390-25191-01	HOUSING, gear	1	
10	404-25135-00	GEAR, drive	1	
11	306-25136-00	BUSH	1	
12	404-25138-00	GEAR, meter	1	
13	102-18416-00	SHIM, rod	1	
14	90201-25490	WASHER, Plate	1	
15	90201-25286	WASHER, Plate	1	
16	341-25137-00	RING, stop	1	
17	91609-20014	PIN, spring	1	
18	94125-18245	TIRE (2.50-18)	1	
19	94225-18076	TUBE (2.50-18)	1	
20	94327-18008	BAND, rim (2.75-18)	1	
21	94414-18089	RIM (1.40-18)	1	
22	214-25104-00	SPOKE SET, front	1	
23	90387-12670	COLLAR	1	
24	481-25118-01	COVER, hub dust	1	
25	367-25381-00	AXLE, wheel	1	
26	90171-12005	NUT, castle	1	
27	91401-30025	PIN, cotter	1	
28	92901-12600	WASHER, Plate	2	

C15

FIG. 26 FRONT BRAKE CALIPER



REF. NO.	PART NO.	DESCRIPTION	Q'TY	REMARKS
1	390-25711-00	DISC, brake	1	
2	90109-08367	BOLT	4	
3	390-25412-00	WASHER	2	
4	2R6-25810-01	CALIPER ASSY (RIGHT)	1	
5	2R6-W0045-00	•BRAKE PAD KIT, front	1	
6	404-W0057-00	•PISTON ASSY, caliPar	1	
7	404-W0048-30	•BREED SCREW KIT	1	
8	90201-12733	•WASHER, Plate	1	
9	90171-12026	•NUT, castle	1	
10	91490-30020	•PIN, cotter	1	
11	90101-08244	BOLT	2	
12	92901-08600	WASHER, Plate	2	
13	92901-08100	WASHER, sPring	2	



D2

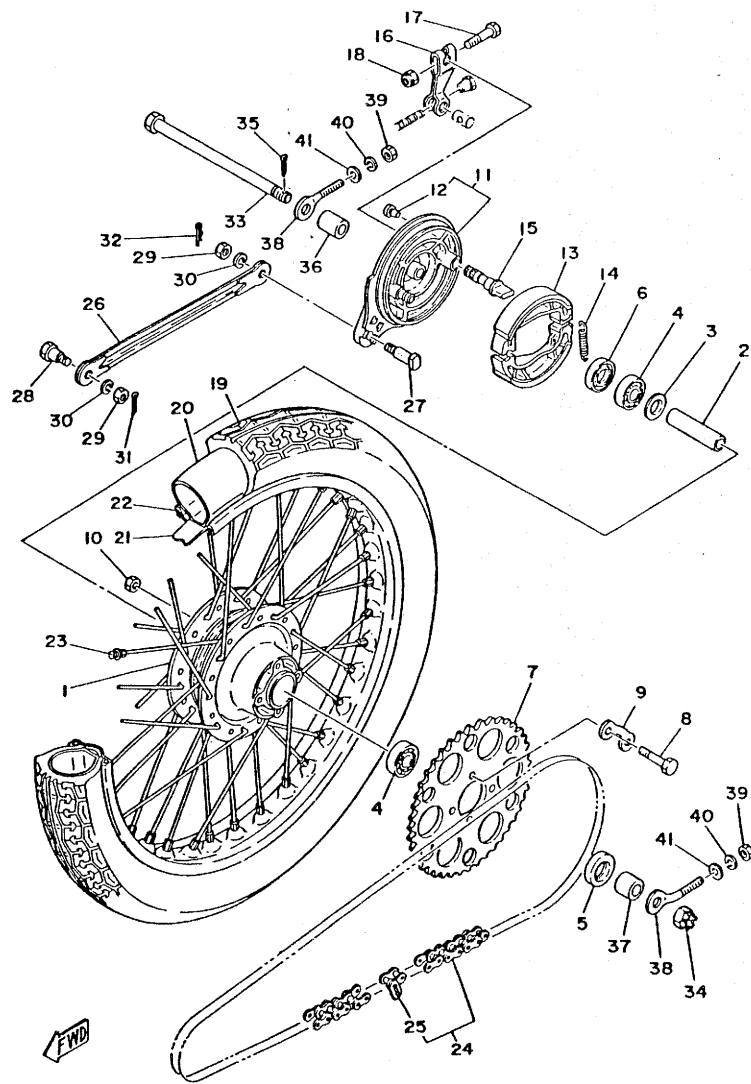
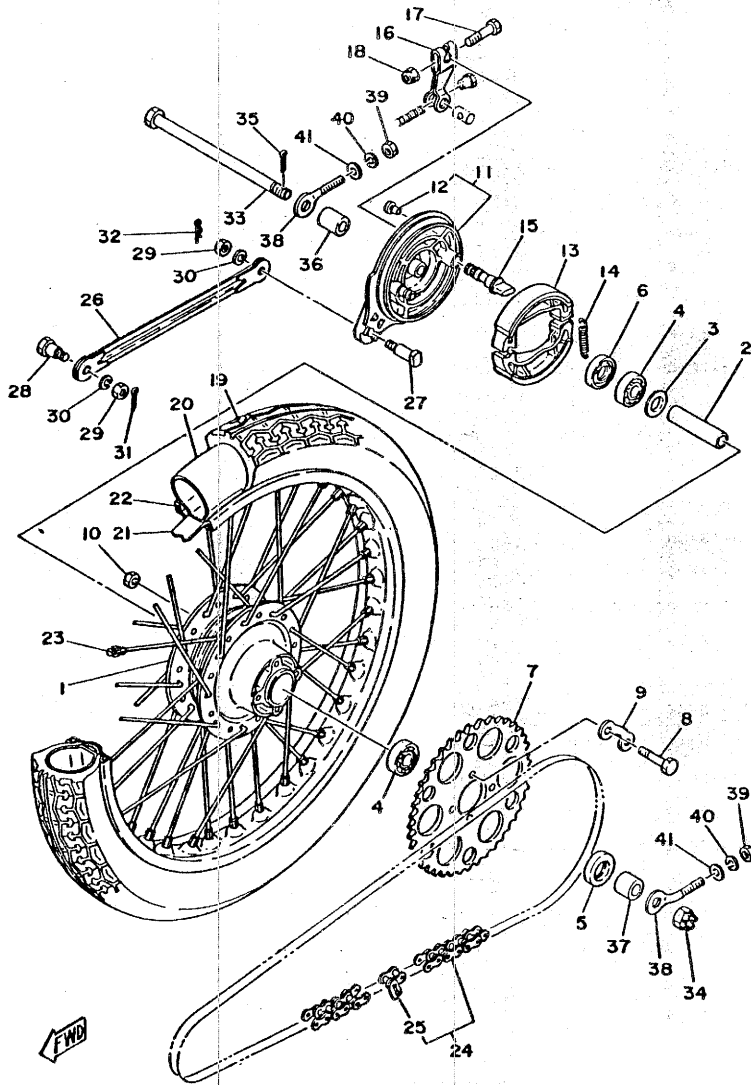


FIG. 27 REAR WHEEL

REF. NO.	PART NO.	DESCRIPTION.	Q'TY	REMARKS
1	462-25311-01-35	HUB, rear	1	silver
2	90560-12170	SPACER	1	
3	102-25315-00	FLANGE, sPacer	1	
4	93306-30101	BEARING (B6301)	2	
5	93106-20002	OIL SEAL	1	
6	93104-21016	OIL SEAL	1	
7	492-25448-10-33	SPROCKET, driven (48T)	1	yamaha black
8	90109-08319	BOLT	4	
9	101-25412-00	WASHER	2	
10	90170-08158	NUT	4	
11	355-25026-00-35	BRAKE SHOE PLATE ASSY	1	silver
12	90480-10068	GROMMET	1	
13	326-25330-10	BRAKE SHOE COMP.	2	
14	90506-16150	SPRING, tension	2	
15	538-25351-01	CAMSHAFT	1	
16	538-25355-00	LEVER, camshaft	1	
17	90101-06278	BOLT	1	
18	95301-06600	NUT	1	
19	94127-18246	TIRE (2.75-18)	1	
20	94227-18010	TUBE (2.75-18)	1	
21	94327-18008	BAND, rim (2.75-18)	1	
22	94414-18007	RIM (1.40-18)	1	
23	262-25304-00	SPOKE SET, rear	1	
24	94580-13106	CHAIN, drive (DID420M 106L)	1	
25	94604-20001	JOINT, chain	1	
26	451-25371-00	BAR, tension	1	
27	90109-08183	BOLT	1	
28	90109-08368	BOLT	1	

D3

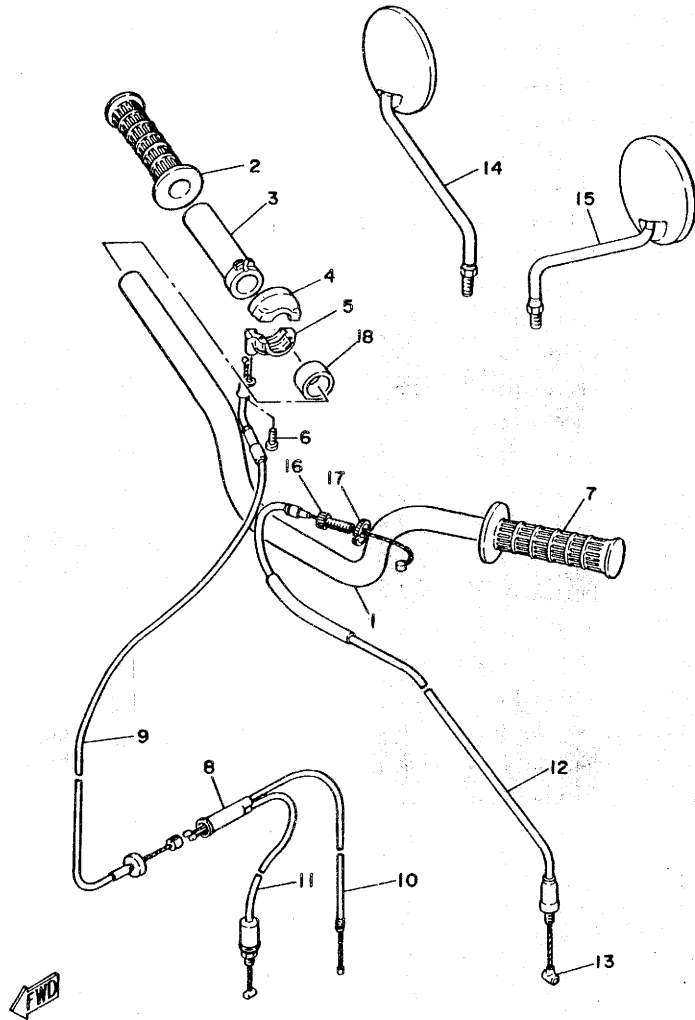
FIG. 27 REAR WHEEL



REF. NO.	PART NO.	DESCRIPTION	Q'TY	REMARKS
29	95301-08700	NUT	2	
30	92901-08100	WASHER, sPrin&	2	
31	91401-20012	PIN, cotter	1	
32	90468-12007	CLIP	1	
33	367-25381-00	AXLE, wheel	1	
34	90171-12005	NUT, castle	1	
35	91401-30022	PIN, cotter	1	
36	90387-12412	COLLAR	1	
37	90387-12096	COLLAR	1	
38	102-25389-00	PULLER, chain 2	2	
39	95301-06600	NUT	2	
40	92901-06100	WASHER, sPrin&	2	
41	92901-06600	WASHER, Plate	2	

D4

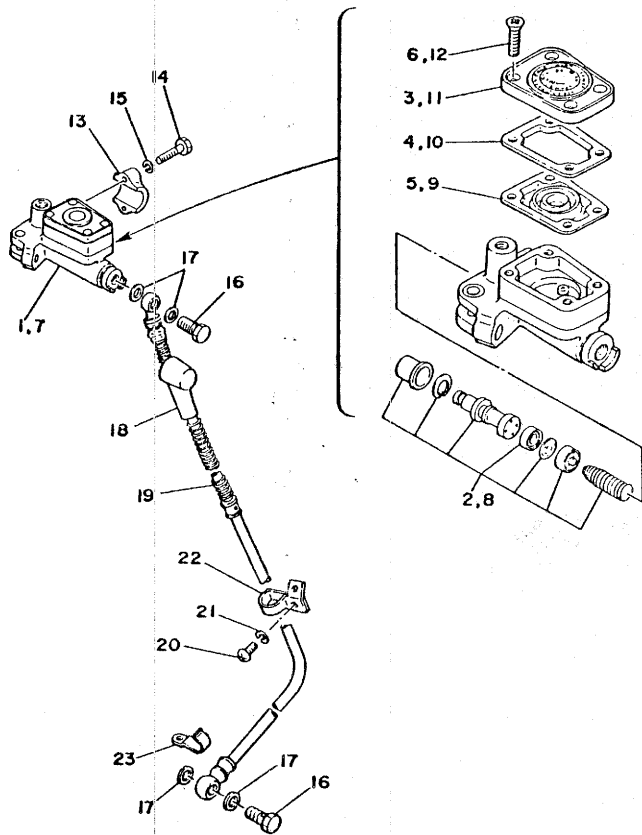
FIG. 28 HANDLEBAR-CABLE



REF. NO.	PART NO.	DESCRIPTION	Q'TY	REMARKS
1	481-26111-00	HANDLEBAR	1	
2	306-26242-10	GRIP (R.H)	1	
3	1V1-26243-00	TUBE, throttle guide	1	
4	1V1-26281-00	CAP, grip upper	1	
5	1V1-26282-00	CAP, grip lower	1	
6	98501-05016	SCREW, Pan head	2	
7	235-26241-10	GRIP (L.H)	1	
8	266-26261-00	CONNECTOR, cable	1	
9	481-26311-00	CABLE, throttle 1	1	
10	367-26312-01	CABLE, throttle 2	1	
11	1K8-26321-01	CABLE, Pump	1	
12	481-26335-10	CABLE, clutch	1	
13	164-26363-00	END, cable	1	
14	1Y1-26290-00	MIRROR ASSY	1	
15	1Y1-26290-10	MIRROR ASSY	1	
16	90123-08046	BOLT	1	
17	90179-08148	NUT	1	
18	90387-22585	COLLAR	1	

D5

FIG. 29 FRT MASTER CYLINDER



REF. NO.	PART NO.	DESCRIPTION	Q'TY	REMARKS
1	1J3-25850-02	MASTER CYLINDER ASSY	1	UR
2	535-W0041-60	.CYLINDER KIT, master	1	
3	1J3-25852-01	.CAP, reservoir	1	
4	1J3-25855-01	.BUSH, diaPhraM	1	
5	1J3-25854-01	.DIAPHRAGM, reservoir	1	
6	98706-05035	.SCREW, flat head	4	
7	1E7-25850-02	MASTER CYLINDER ASSY <i>AE20F</i>	1	UR
8	535-W0041-10	.CYLINDER KIT, master	1	
9	1A0-25854-01	.DIAPHRAGM, reservoir	1	
10	1A0-25855-01	.BUSH, diaPhraM	1	
11	1A0-25893-01	.RESERVOIR CAP ASSY	1	
12	1A0-25824-01	.SCREW, breed	4	
13	1J3-25867-00	BRACKET, master cylinder	1	
14	97321-06025	BOLT	2	
15	92901-06100	WASHER, sPring	2	
16	90401-10034	BOLT, union	2	
17	90201-10118	WASHER, Plate	4	
18	360-25862-00	BOOT, master cylinder	1	
19	2L4-25872-00	HOSE, brake 1	1	
20	92501-06012	SCREW, Pan head	1	
21	92901-06100	WASHER, sPring	1	
22	1K0-25875-01	HOLDER, brake hose 1	1	
23	2L4-25876-00	HOLDER, brake hose 2	1	

FWD

D6

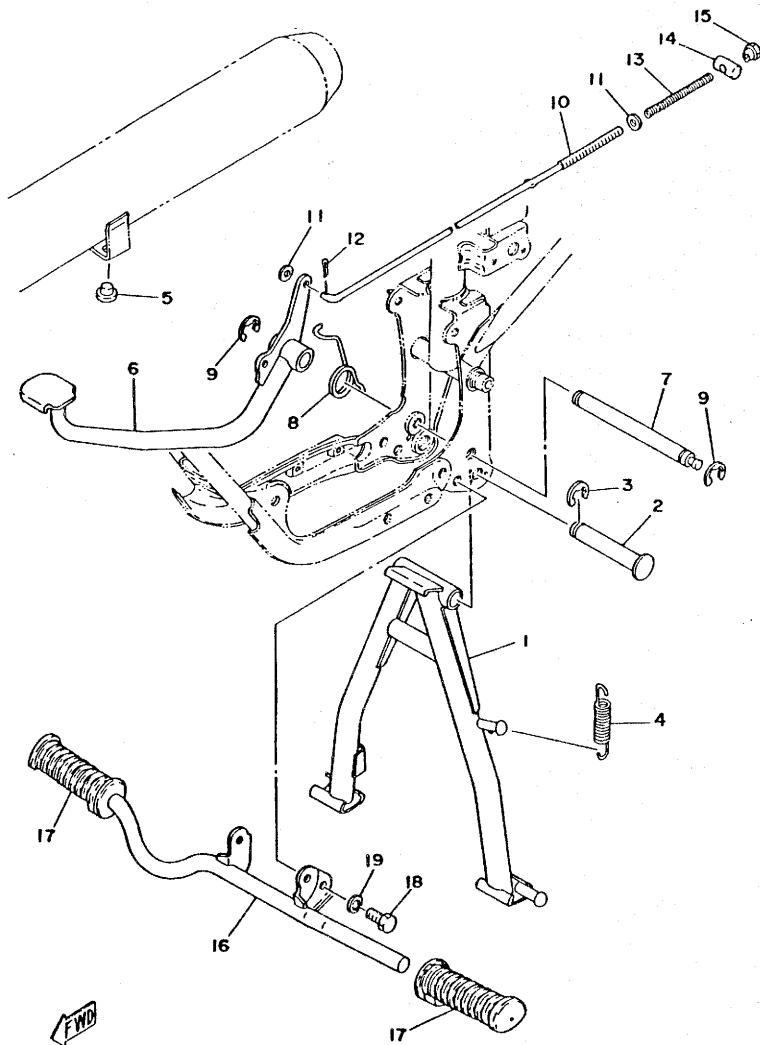
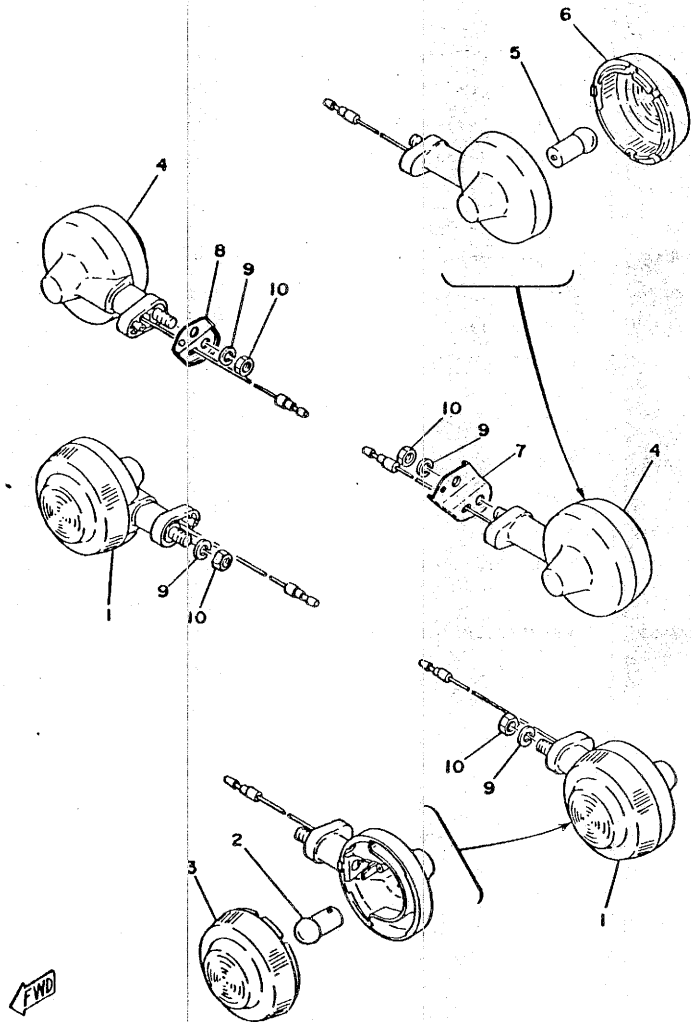


FIG. 30 STAND•FOOTREST

REF. NO.	PART NO.	DESCRIPTION	Q'TY	REMARKS
1	2L5-27111-01-33	STAND, main	1	yamaha black
2	353-27112-00	SHAFT, main stand	1	
3	93430-12008	CIRCLIP	1	
4	90506-28100	SPRING, tension	1	
5	1M3-27114-00	STOPPER, main stand	1	
6	2E0-27211-00	PEDAL, brake	1	
7	353-27212-00	SHAFT, brake Pedal	1	
8	90508-32056	SPRING, torsion	1	
9	93430-12008	CIRCLIP	2	
10	195-27231-02	ROD, brake	1	
11	92901-06600	WASHER, Plate	2	
12	91401-20012	PIN, cotter	1	
13	90501-10245	SPRING, compression	1	
14	90249-12008	PIN	1	
15	90179-06176	NUT	1	
16	353-27411-10-33	FOOTREST 1	1	
17	122-27413-00	COVER, footrest	2	
18	90101-08412	BOLT	1	
19	92901-08100	WASHER, spring	1	

D7

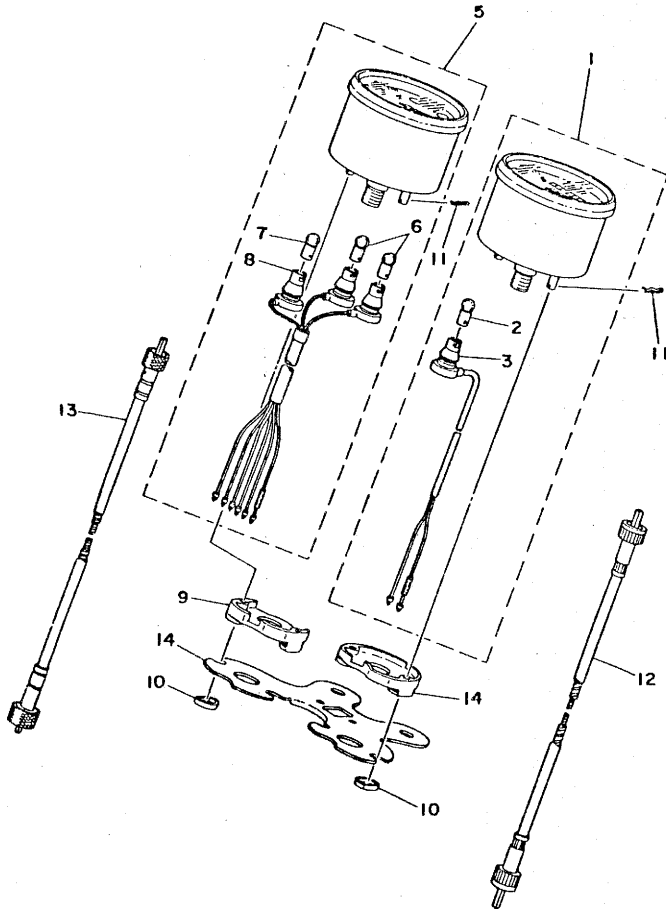
FIG. 31 FLASHER LIGHT



REF. NO.	PART NO.	DESCRIPTION	Q'TY	REMARKS
1	3M7-83310-10	FRONT FLASHER LIGHT ASSY 1	2	
2	152-83311-10	.BULB (6V-10W)	1	
3	3M7-83312-10	.LENS, flasher REAR	1	
4	3M7-83310-10	FRONT FLASHER LIGHT ASSY 1	2	
5	152-83311-10	.BULB (6V-10W)	1	
6	3M7-83312-10	.LENS, flasher	1	
7	2L7-83368-00	STAY, flasher	1	
8	2L7-83369-00	STAY, flasher	1	
9	92901-08100	WASHER, sPrin8	4	
10	95301-08600	NUT	4	

D8

FIG. 32 METER



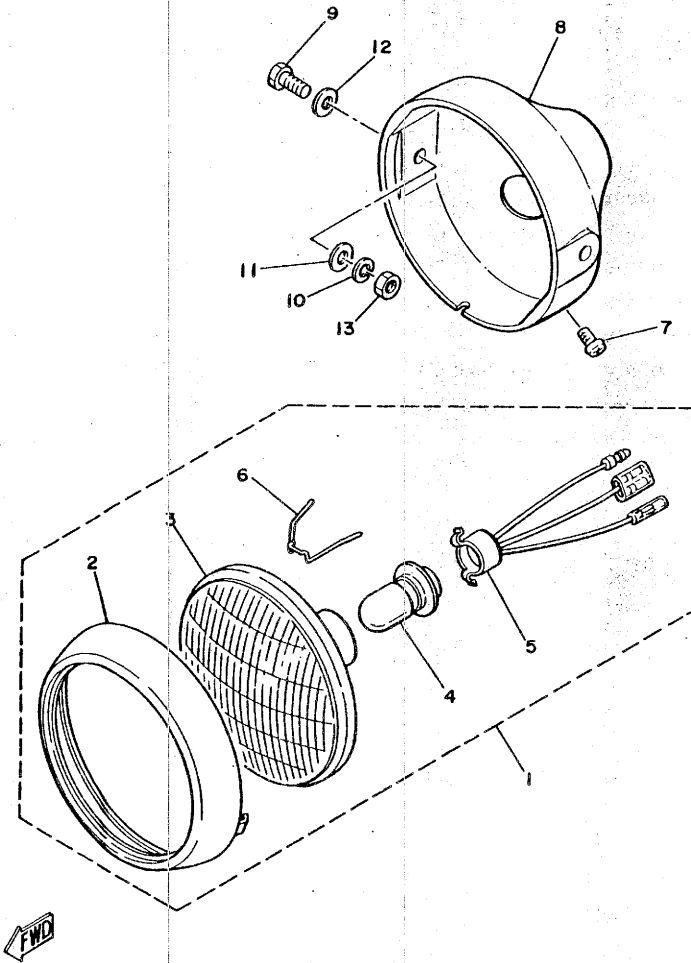
REF. NO.	PART NO.	DESCRIPTION	Q'TY	REMARKS
1	2L4-83510-F0	SPEEDOMETER ASSY	1	
2	388-83517-10	.BULB (6V-1.7W)	1	
3	2L4-83536-00	.SOCKET, meter	1	
4	214-83523-00	DAMPER	1	
5	2L4-83540-F0	TACHOMETER ASSY	1	
6	122-83516-10	.BULB (6V-3W)	2	
7	388-83517-10	.BULB (6V-1.7W)	1	
8	2M4-83520-00	.SOCKET ASSY	1	
9	237-83523-00	DAMPER	1	
10	90209-05029	WASHER	4	
11	90468-10050	CLIP	4	
12	481-83550-01	SPEEDOMETER CABLE ASSY	1	
13	481-83560-01	TACHOMETER CABLE ASSY	1	
14	526-83519-00-33	BRACKET, meter	1	yamaha black

FWD

D9

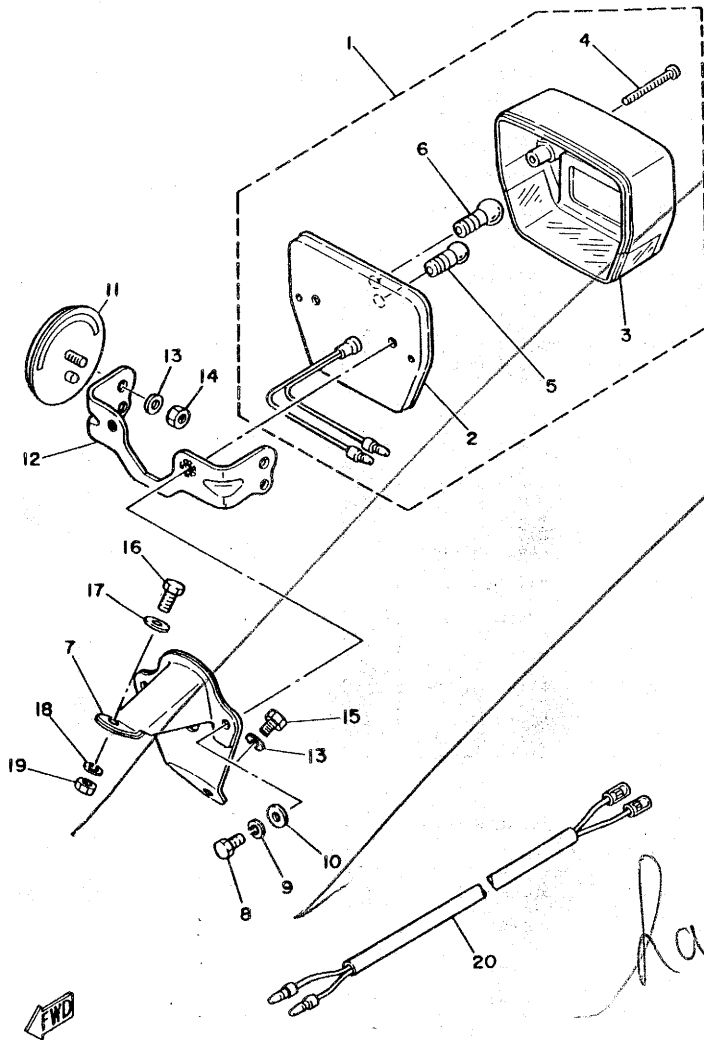
FIG. 33 HEADLIGHT

REF. NO.	PART NO.	DESCRIPTION	Q'TY	REMARKS
1	2L6-84110-00	HEADLIGHT UNIT ASSY	1	
2	202-84315-00	.RIM, headlight	1	
3	260-84120-00	.LENS ASSY	1	
4	104-84114-00	.BULB (6V-15/15W)	1	
5	241-84312-00	.SOCKET	1	
6	195-84324-00	.SPRING, reflector	3	
7	98501-05008	SCREW, Pan head	1	
8	3M7-84130-00	BODY ASSY, headlight	1	
9	97301-08025	BOLT	2	
10	92901-08100	WASHER, sPring	2	
11	92901-08600	WASHER, Plate	2	
12	92903-08200	WASHER, Plain	2	
13	95301-08600	NUT	2	



D10

FIG. 34 TAILLIGHT



REF. NO.	PART NO.	DESCRIPTION	Q'TY	REMARKS
1	1X6-84510-A0	TAILLIGHT UNIT ASSY	1	
2	1X6-84511-00	.BASE, taillight	1	
3	1Y1-84521-30	.LENS, taillight	1	
4	98511-03045	.SCREW, Pan head	2	
5	1X4-84514-00	.BULB (6V-2W)	1	
6	1X4-84535-00	.BULB (6V-5W)	1	
7	1X4-84551-00-35	BRACKET, licence	1	silver
8	97301-05010	BOLT	2	
9	92901-05100	WASHER, sPrinG	2	
10	92901-05600	WASHER, Plate	2	
11	2M5-85110-00	FRONT REFLECTOR ASSY	2	
12	3F3-85112-00	BRACKET, reflector i	1	
13	92901-05700	WASHER	4	
14	95301-05600	NUT	2	
15	97301-05010	BOLT	2	
16	97301-06012	BOLT	2	
17	92901-06600	WASHER, Plate	2	
18	92901-06100	WASHER, sPrinG	2	
19	95301-06600	NUT	2	
20	2E1-84517-00	CORD, taillight	1	

has been changed

D11

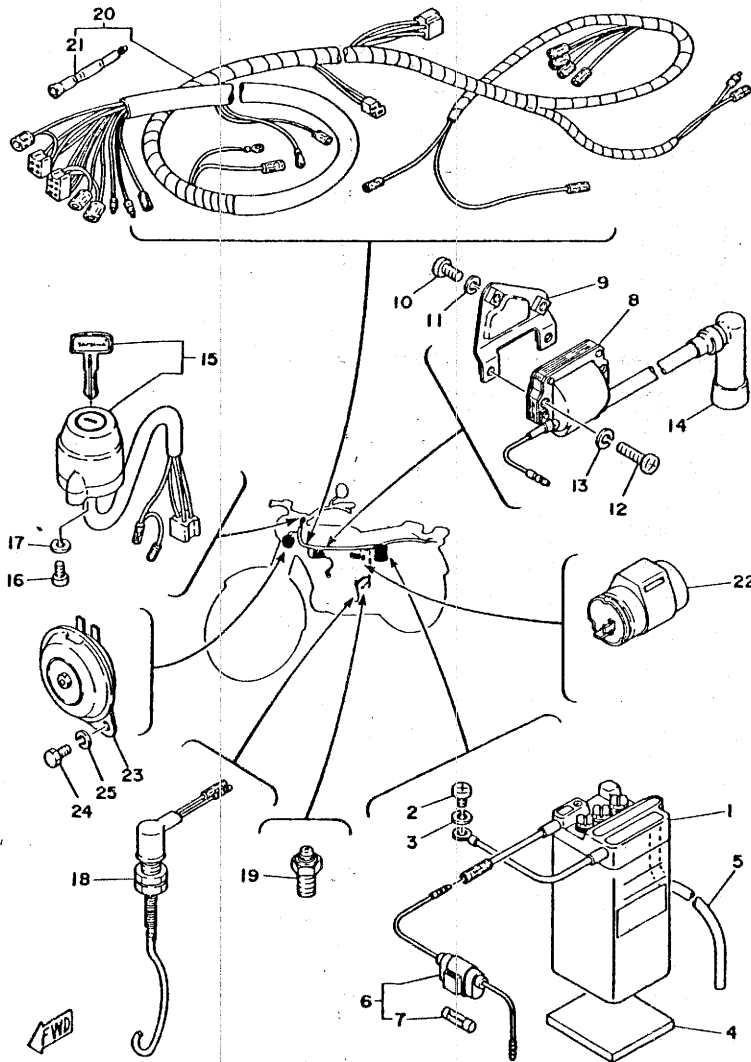
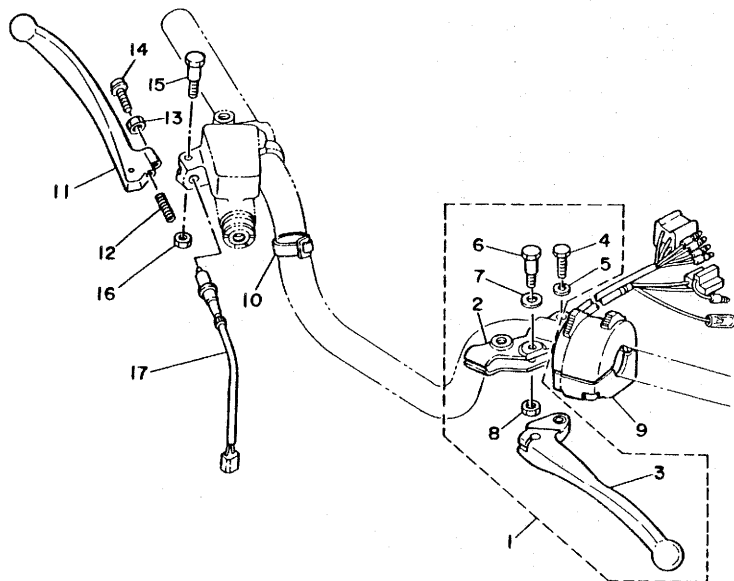


FIG. 35 ELECTRICAL 1

REF. NO.	PART NO.	DESCRIPTION	Q'TY	REMARKS
1	104-82110-10	BATTERY ASSY (G.S. 6N4A-4D)	1	UR
	104-82110-21	BATTERY ASSY (F.B. 6N4A-4D)	1	UR
2	92501-06010	SCREW, Pan head	1	
3	92901-06100	WASHER, sPrinE	1	
4	304-82122-00	SEAT, battery	1	
5	90445-08433	HOSE	1	
6	353-82150-00	FUSE HOLDER ASSY	1	
7	116-82151-00	.FUSE (6V-10A)	1	
8	2M4-82310-40	IGNITION COIL ASSY	1	
9	336-82316-01	BRACKET, ignition coil	1	
10	92501-06012	SCREW, Pan head	2	
11	92901-06100	WASHER, sPrinE	2	
12	92501-06025	SCREW, Pan head	2	
13	92901-06100	WASHER, sPrinE	2	
14	1J7-82370-10	PLUG CAP ASSY	1	
15	2L5-82508-20	MAIN SWITCH ASSY	1	
16	98501-05012	SCREW, Pan head	2	
17	92901-05100	WASHER, sPrinE	2	
18	353-82530-01	STOP SWITCH ASSY	1	
19	341-82540-01	NEUTRAL SWITCH ASSY	1	
20	2L7-82590-20	WIRE HARNESS ASSY	1	
21	3K7-81980-00	.DIODE	1	
22	2M5-83350-10	FLASHER RELAY ASSY	1	
23	2L5-83371-10	HORN	1	
24	97301-06012	BOLT	2	
25	92901-06100	WASHER, sPrinE	2	

D12

FIG. 36 HANDLE SWITCH-LEVER



REF. NO.	PART NO.	DESCRIPTION	QTY	REMARKS
1	360-82910-02	LEVER HOLDER ASSY 1	1	
2	341-82911-00	.HOLDER, lever 1	1	
3	214-83912-00	.LEVER 1	1	
4	97301-06022	.BOLT	1	
5	92901-06100	.WASHER, sPring	1	
6	90109-06410	.BOLT	1	
7	90201-08083	.WASHER, Plate	1	
8	95601-06100	.NUT, u	1	
9	2L6-83972-00	SWITCH, handle 4	1	
10	168-83936-01	BAND, switch cord	2	
11	1V1-83922-00	LEVER 2	1	
12	90501-10312	SPRING, comPression	1	
13	90170-06010	NUT	1	
14	90149-06131	SCREW	1	
15	90109-06465	BOLT	1	
16	95601-06100	NUT, u	1	
17	1A0-83980-30	FRONT STOP SWITCH ASSY	1	



FIG. 37 REPAIR KIT

REF. NO.	PART NO.	DESCRIPTION	Q'TY	REMARKS	REF. NO.	PART NO.	DESCRIPTION	Q'TY	REMARKS
1	2W1-11630-00	PISTON ASSY (STD)	1		28	353-13621-00	.GASKET, valve seat	2	
2	353-11631-81-96	.PISTON (STD)	1		29	132-14613-00	.GASKET, exhaust Pipe	1	
3	2W1-11610-00	.PISTON RING SET (STD)	1		30	132-14714-01	.GASKET, muffler	1	
4	517-11633-00	.PIN, Piston	1		31	90430-12038	.GASKET	1	
5	93450-13022	.CIRCLIP	2		32	353-15451-00	.GASKET, crankcase cover	1	
6	2W1-11630-10	PISTON ASSY (1ST O/S)	1		33	93210-21190	.O-RING	1	
7	353-11635-81	.PISTON (1ST O/S 0.25MM)	1		34	93210-13016	.O-RING	1	
8	2W1-11610-10	.PISTON RING SET (1ST O/S)	1		35	137-15353-00	.GASKET, drain	1	
9	517-11633-00	.PIN, Piston	1		36	3W2-W0003-00	OIL SEAL KIT	1	
10	93450-13022	.CIRCLIP	2		37	93102-20155	.OIL SEAL	1	
11	2W1-11630-20	PISTON ASSY (2ND O/S)	1		38	93103-28100	.OIL SEAL	1	
12	353-11636-81	.PISTON (2ND O/S 0.50MM)	1		39	93101-10001	.OIL SEAL	1	
13	2W1-11610-20	.PISTON RING SET (2ND O/S)	1		40	93109-15001	.OIL SEAL	1	
14	517-11633-00	.PIN, Piston	1		41	257-15389-00	.SEAL, Push rod	1	
15	93450-13022	.CIRCLIP	2		42	93104-11028	.OIL SEAL	1	
16	1K9-11650-00	CONNECTING ROD ASSY	1		43	93102-25017	.OIL SEAL	1	
17	538-11651-01	.ROD, connecting	1		44	93101-12004	.OIL SEAL	1	
18	257-11681-00	.PIN, crank 1	1						
19	93310-41809	.BEARING, cylindrical	1						
20	90209-18112	.WASHER	2						
21	93310-11268	.BEARING, cylindrical	1						
22	3W2-W0001-00	GASKET KIT	1						
23	107-11181-01	.GASKET, cylinder head 1	1						
24	353-11351-00	.GASKET, cylinder	1						
25	90430-04004	.GASKET	1						
26	126-13116-00	.GASKET, Pump case	1						
27	353-14184-00	.GASKET, float chamber	1						

D14

NUMERICAL INDEX

PART NO.	GRID NO.	PART NO.	GRID NO.	PART NO.	GRID NO.
3W2-W0001-00	D14	137-13137-00-10	B 5	266-14191-00	B 8
3W2-W0003-00	D15	137-13138-01	B 5	127-14195-00	B 7
535-W0041-10	D 6	367-13146-01	B 5	183-14196-00	B 8
535-W0041-60	D 6	248-13174-00	B 5	183-14197-01	B 8
2R6-W0045-00	D 2	2A3-13175-00	B 5	304-14261-00	B 7
404-W0048-30	D 2	1E7-13176-00	B 5	2U2-14411-01	B 6
404-W0057-00	D 2	353-13178-00	B 5	2U2-14412-00	B 6
2L5-W2472-01	C13	278-13552-02	B 6	2U2-14437-01	B 6
2L4-11111-00	B 2	353-13552-01	B 5	2L4-14451-00	B 6
2L4-11127-00	B 2	353-13555-00	B 6	2U2-14452-00	B 6
2L4-11128-00	B 2	353-13556-00	B 6	2L4-14453-00	B 6
107-11181-01	B 2	353-13565-00	B 6	353-14611-00	B 9
	D14	2A3-13610-01	B 6	1L4-14612-00	B 9
2W1-11311-00	B 2	2A3-13613-00	B 6	132-14613-00	B 9
353-11351-00	B 2	2A3-13616-00	B 6		D15
	D14	353-13621-00	B 6	3W2-14710-00	B 9
2U2-11400-00	B 3		D15	132-14713-00	B 9
2U2-11412-00	B 3	2W1-14101-00	B 7	132-14714-01	B 9
2U2-11422-00	B 3	353-14112-15	B 7		D15
2W1-11610-00	B 3	2W1-14116-15	B 7	353-14753-01	B 9
	D14	102-14122-00	B 7	353-14771-00	B 9
2W1-11610-10	B 3	353-14123-00	B 7	2E1-14772-00	B 9
	D14	127-14124-20	B 7	353-15111-00	B10
2W1-11610-20	B 3	266-14126-00	B 8	353-15121-02	B10
	D14	353-14126-00	B 7	137-15353-00	C 3
2W1-11630-00	D14	353-14131-00	B 7		D15
2W1-11630-10	D14	127-14134-00	B 7	353-15361-00	C 7
2W1-11630-20	D14	156-14135-00	B 8	353-15362-00	B11
353-11631-81-96	B 3	439-14136-01	B 7	492-15387-00	B10
	D14	353-14137-00	B 7	257-15389-00	B13
353-11631-81-98	B 3	353-14138-00	B 8		D15
		127-14141-10	B 7	353-15411-00-Y4	B11
517-11633-00	B 3	260-14142-22	B 7	353-15415-00-Y4	B11
	D14	127-14143-40	B 7	353-15416-00-Y4	B11
353-11635-81	B 3	127-14143-42	B 7	353-15421-00-Y4	B11
	D14	127-14143-44	B 7	353-15437-02	B11
353-11636-81	B 3	353-14158-00	B 7	353-15451-00	B11
	D14	802-14161-00	B 7		D15
1K9-11650-00	D14	802-14169-00	B 7	353-15611-01-93	B12
538-11651-01	B 3	304-14171-00	B 7	156-15618-01	B12
	D14	132-14173-00	B 8	337-15621-01-91	B12
257-11681-00	B 3	152-14174-00	B 8	353-15641-00	B12
	D14	2U2-14181-06	B 7	117-15644-00	B12
2A3-13101-00	B 5	353-14184-00	B 7	353-15651-00	B12
126-13116-00	B 5		D14	353-15660-02	B12
	D14	353-14185-01	B 7	132-15664-01	B12
137-13137-00-03	B 5	353-14186-00	B 7	248-15668-00	B12
137-13137-00-05	B 5	353-14190-12	B 7	132-15676-01	B12

NUMERICAL INDEX

PART NO.	GRID NO.	PART NO.	GRID NO.	PART NO.	GRID NO.
353-16111-01	B13	353-18512-01	C 3	1T8-23145-00	C11
2U2-16150-00	B13	353-18513-01	C 3	2U2-23151-00	C11
122-16164-00	B13	214-18531-00	C 3	1T8-23158-00	C11
2U2-16301-00	B13	353-18540-01	C 3	509-23158-L0	C11
131-16321-00	B13	353-18547-00	C 3	207-23163-00	C11
131-16324-00	B13	214-18561-00	C 3	2L6-23170-00	C11
241-16341-01	B13	353-18562-00	C 3	278-23181-50	C11
451-16342-00	B13	2L8-21110-00-33	C 5	428-23191-00	C11
132-16346-00	B14	288-21376-00	C 7	250-23318-40	C11
257-16351-00	B13	2L4-21510-10-93	C 6	353-23340-91-33	C11
137-16356-00	B13	1A0-21518-00	C 6	1M3-23346-00	C11
353-16357-00	B13	2L5-21610-01-93	C 6	122-23411-00	C10
131-16367-00	B13	353-21711-00-T5	C 7	156-23411-00	C10
257-16371-01	B13	353-21711-00-29	C 7	122-23412-00	C10
353-16396-00	B14	353-21717-00	C 7	156-23412-00	C10
353-17121-11	B15	353-21721-00-T5	C 7	122-23416-00	C10
353-17131-00	B15	353-21721-00-29	C 7	185-23435-00-33	C10
353-17141-12	B15	2L4-21737-00	C 7	482-23441-00-98	C10
353-17151-00	B15	353-21745-00	C 8	482-23442-00-98	C10
353-17211-01	B15	353-21751-00	C 8	353-23480-01	C10
257-17219-00	B15	353-21761-00	C 8	2L4-24110-00-X2	C12
353-17221-00	B15	353-21763-00	C 8	2L4-24110-00-X3	C12
353-17231-00	B15	353-21764-00	C 8	1G7-24164-00	C12
353-17241-00	B15	296-21771-62	C 8	122-24181-00	C12
353-17251-00	B15	296-21772-00	C 8	353-24182-00	C12
353-17410-10	B15	353-21778-00	C 8	2L4-24244-00	C12
353-17411-10	B15	2J9-22110-01-33	C 9	2L4-24245-00	C12
598-17421-00	B15	102-22123-00	C 9	367-24500-04	C12
257-17461-11	B15	353-22141-02	C 9	355-24515-00	C12
257-17461-21	B15	183-22151-00	C 9	355-24518-01	C12
257-17461-31	B15	2L4-22210-01	C 9	122-24521-00	C12
353-17471-00	B15	2L4-22311-00-93	C 9	102-24522-01	C12
353-17810-00	C 2	2L6-23101-01	C11	355-24523-00	C12
214-17812-00	C 2	2L6-23110-00	C11	355-24524-01	C12
353-17831-00	C 2	1T8-23111-00	C11	603-24531-01	C12
248-17837-00	C 2	1T8-23112-00	C11	122-24532-00	C12
214-17841-01	C 2	1T8-23114-00	C11	355-24535-00	C12
237-17861-00	C 2	207-23116-01	C11	127-24650-02	C12
353-18101-00	C 4	596-23117-00	C11	2A3-24705-00	C13
353-18111-00-93	C 4	122-23119-01	C11	1J7-24722-00	C13
132-18113-01	C 4	2L6-23121-00-33	C11	214-24724-00	C13
353-18120-00	C 4	1Y1-23122-00	C11	353-24726-00	C13
102-18137-00-10	B12	2U2-23126-00	C11	214-24728-00-33	C13
353-18141-01	C 3	122-23129-00	C11	2L5-24731-01	C13
214-18178-00	C 4	2L6-23131-00-33	C11	2L5-24734-00	C13
367-18197-00	C 4	2U2-23136-00	C11	1J7-24735-00	C13
102-18416-00	C15	481-23141-01	C11	2L5-24756-00-T5	C13
353-18511-01	C 3	209-23142-40	C11	2L5-24756-00-29	C13

NUMERICAL INDEX

PART NO.	GRID NO.	PART NO.	GRID NO.	PART NO.	GRID NO.	PART NO.	GRID NO.	PART NO.	GRID NO.	PART NO.	GRID NO.
2L4-24757-00	C14	2L4-25872-00	D 6	304-82122-00	D12	1X4-84551-00-35	D11	90201-15340	B12	90501-20122	B13
2L4-24767-00	C14	1K0-25875-01	D 6	353-82150-00	D12	2M5-85110-00	D11	90201-20279	C 9	90506-07066	B13
353-24768-00	C13	2L4-25876-00	D 6	116-82151-00	D12	3F3-85112-00	D11	90201-25286	C15	90506-16150	D 3
1K8-24774-00	C13	1A0-25893-01	D 6	2M4-82310-40	D12	90101-06278	D 3	90201-25490	C15	90506-28100	D 7
2L5-24785-00-T5	C13	481-26111-00	D 5	336-82316-01	D12	90101-06304	C13	90206-15021	B12	90508-26136	B12
2L5-24785-00-29	C13	235-26241-10	D 5	1J7-82370-10	D12	90101-08244	D 2	90208-12015	B13	90508-32054	C 4
2L5-24785-10-T5	C13	306-26242-10	D 5	2L5-82508-20	D12	90101-08284	C 5	90209-05029	D 9	90508-32056	D 7
2L5-24785-10-29	C13	1V1-26243-00	D 5	353-82530-01	D12	90101-08305	C13	90209-10021	C10	90560-12138	C15
1J7-24786-10	C14	266-26261-00	D 5	341-82540-01	D12	90101-08412	D 7	90209-18112	B 3	90560-12170	D 3
1J7-24789-00	C13	1V1-26281-00	D 5	2L7-82590-20	D12	90105-10006	C10		D14	90560-17123	B13
341-24818-02	C13	1V1-26282-00	D 5	360-82910-02	D13	90109-06410	D13	90215-13019	B15	91316-06025	B 6
355-25026-00-35	D 3	1Y1-26290-00	D 5	341-82911-00	D13	90109-06465	D13	90240-06009	C 9	91401-16012	C 9
2L4-25104-00	C15	1Y1-26290-10	D 5	3M7-83310-10	D 8	90109-08183	D 3	90249-12008	D 7	91401-16015	B 7
390-25111-00	C15	481-26311-00	D 5	152-83311-10	D 8	90109-08319	D 3	90280-03017	B 3	91401-20012	D 4
481-25118-01	C15	367-26312-01	D 5	3M7-83312-10	D 8	90109-08367	D 2	90282-05005	B13		D 7
404-25135-00	C15	1K8-26321-01	D 5	2M5-83350-10	D12	90109-08368	D 3	90334-12009	B10	91401-25017	C 3
306-25136-00	C15	481-26335-10	D 5	2L7-83368-00	D 8	90109-14485	C 3	90340-12005	B10	91401-30022	D 4
341-25137-00	C15	164-26363-00	D 5	2L7-83369-00	D 8	90113-06013	B13	90381-08002	B10	91401-30025	C15
404-25138-00	C15	2L5-27111-01-33	D 7	2L5-83371-10	D12	90116-06026	B 2	90387-12096	D 4	91490-30020	D 2
341-25149-00	C15	353-27112-00	D 7	2L4-83510-F0	D 9	90119-05001	B13	90387-12412	D 4	91609-20014	C15
390-25191-01	C15	1M3-27114-00	D 7	122-83516-10	D 9	90119-06017	C10	90387-12670	C15	91830-21014	B11
262-25304-00	D 3	2E0-27211-00	D 7	388-83517-10	D 9	90123-08046	D 5	90387-17137	B15	91830-22016	B10
462-25311-01-35	D 3	353-27212-00	D 7	526-83519-00-33	D 9	90149-06131	D13	90387-20170	B 3		
102-25315-00	D 3	195-27231-02	D 7	2M4-83520-00	D 9	90149-08094	C 4	90387-22585	D 5	92501-06010	D12
109-25315-00	C15	353-27411-10-33	D 7	214-83523-00	D 9	90170-06010	D13	90401-10034	D 6	92501-06012	B15
326-25330-10	D 3	122-27413-00	D 7	237-83523-00	D 9	90170-08158	D 3	90430-04004	B 5		D 6
538-25351-01	D 3	120-27431-00	C 9	2L4-83536-00	D 9	90170-12060	B13		D14		D12
538-25355-00	D 3	120-27433-00	C 9	2L4-83540-F0	D 9	90170-12175	B 3	90430-12038	B10	92501-06014	B 6
451-25371-00	D 3	2U2-28100-10	C 7	481-83550-01	D 9	90171-12005	C15		D15	92501-06015	B14
367-25381-00	C15	2M4-81300-20	B 4	481-83560-01	D 9		D 4	90445-05217	B 5		C 7
	D 4	520-81309-20	B 4	214-83912-00	D13	90171-12026	D 2	90445-08433	D12		C 8
102-25389-00	D 4	2M4-81312-20	B 4	1V1-83922-00	D13	90179-06176	D 7	90445-09079	C12	92501-06020	B 6
101-25412-00	D 3	2M4-81313-20	B 4	168-83936-01	D13	90179-08148	D 5	90445-09107	C 8		B11
390-25412-00	D 2	2M4-81315-20	B 4	2L6-83972-00	D13	90179-12181	B15	90460-33087	B 6	92501-06025	B10
492-25448-10-33	D 3	2A6-81321-20	B 4	1A0-83980-30	D13	90179-12244	B13	90460-64142	B 6		B11
390-25711-00	D 2	1K8-81325-20	B 4	2L6-84110-00	D10	90179-25051	C10	90467-08003	C10		D12
2R6-25810-01	D 2	104-81328-20	B 4	104-84114-00	D10	90201-06055	B 6		C 8	92501-06030	B11
1A0-25824-01	D 6	116-81331-20	B 4	260-84120-00	D10	90201-06067	C 7	90468-02033	C 7	92501-06040	B11
341-25846-00	C15	110-81345-21	B 4	3M7-84130-00	D10		C 8		D 9	92501-06045	B11
1E7-25850-02	D 6	110-81346-21	B 4	241-84312-00	D10	90201-08083	D10	90468-10050	D13	92501-06050	B10
1J3-25850-02	D 6	110-81347-21	B 4	202-84315-00	D10	90201-08624	B 5	90468-12007	B 5	92501-06055	B10
1J3-25852-01	D 6	110-81348-21	B 4	195-84324-00	D10	90201-10118	D 6	90468-26038	D 4	92701-06012	C 3
1A0-25854-01	D 6	2M4-81350-20	B 4	1X6-84510-A0	D11	90201-10135	B 5	90480-10068	D 3	92901-04100	B 8
1J3-25854-01	D 6	353-81970-50	B 4	1X6-84511-00	D11	90201-12175	C 9	90501-02217	B 5	92901-05100	B 4
1A0-25855-01	D 6	353-81970-63	B 4	1X4-84514-00	D11	90201-12535	B 3	90501-09292	C 3		B 5
1J3-25855-01	D 6	3K7-81980-00	D12	2E1-84517-00	D11	90201-12575	C 4	90501-10245	D 7		B 9
360-25862-00	D 6	104-82110-10	D12	1Y1-84521-30	D11	90201-12733	D 2	90501-10312	D13		C 9
1J3-25867-00	D 6	104-82110-21	D12	1X4-84535-00	D11	90201-13202	B12	90501-12081	B12		C13

NUMERICAL INDEX

PART NO.	GRID NO.	PART NO.	GRID NO.	PART NO.	GRID NO.
92901-05100	D11	93102-25017	D15	94127-18246	D 3
	D12	93103-28100	B 3	94225-18076	C15
92901-05200	B 4		D15	94227-18010	D. 3
92901-05600	C13	93104-11028	B14	94327-18008	C15
	D11		D15		D 3
92901-05700	D11	93104-21016	D 3	94414-18007	D 3
92901-06100	B 6	93105-45017	C15	94414-18089	C15
	B 9	93106-20002	C15	94580-13106	D 3
	C 6		D 3	94604-20001	D 3
	C13	93109-15001	B12	94701-00040	B 2
	D 4		D15	95301-05600	B 5
	D 6	93210-13016	C 2		C12
			D15		C13
	D12	93210-21190	B11		D11
	D13		D15	95301-06600	B 2
92901-06200	B 2	93210-99103	B13		B 9
	B 6	93306-20303	B15		C 6
92901-06600	B 6	93306-20418	B 3		D 3
	C 6	93306-30101	C15		D 4
	C13		D 3		D11
	D 4	93306-30301	B15	95301-06700	B13
	D 7	93310-11268	B 3	95301-08600	B 9
	D11		D14		C 4
92901-08100	B 9	93310-41809	B 3		D 8
	C 5		D14		D10
	C 6	93410-12003	B12	95301-08700	D 4
	D 2	93410-13004	B15	95301-10600	C 9
	D 4	93410-15005	B12		C10
	D 7	93410-25017	B12	95304-12800	C 9
	D 8	93430-08006	B 5	95601-06100	D13
	D10	93430-10016	B12	95701-08100	C 5
92901-08600	C 6		C 3	95821-08090	C 5
	D 2		C 4	95821-08120	C 5
	D10	93430-12008	D 7	97301-05010	D11
92901-10100	C 9	93440-12026	C 3	97301-06010	C 2
	C10	93440-16030	B15	97301-06012	C 6
92901-10600	C 9	93450-13022	B 3		D11
	C10		D14		D12
92901-12100	B 3	93501-04011	C10	97301-06016	C 6
92901-12600	C15	93503-16010	B13		C13
92903-08200	D10		C10	97301-06022	D13
93101-10001	B 5	93505-32002	B 5	97301-06025	C13
	D15	93507-32009	B12	97301-08018	B 9
93101-12004	C 4	93603-22028	B 5	97301-08025	D10
	D15	93604-08071	C 3	97301-08040	C 6
93102-20155	B 3	93604-10011	C 3	97311-06025	B12
	D15	93606-14081	C 3	97321-06020	C 4
93102-25017	B15	94125-18245	C15	97321-06025	D 6

NUMERICAL INDEX

PART NO.	GRID NO.	PART NO.	GRID NO.
97602-03108	B 6		
98501-04014	B 8		
98501-05008	B 9		
	C 9		
	D10		
98501-05012	D12		
98501-05016	B 5		
	D 5		
98501-05020	B 4		
98511-03045	D11		
98601-05012	C10		
98701-05012	C 3		
98701-05015	B 4		
98706-05035	D 6		
98901-04008	B 5		

PARTS NAME INDEX

DESCRIPTION	GRID NO.
ABSORBER 3	B 2
ABSORBER 4	B 2
AXLE, drive	B15
AXLE, drive gear	C 2
AXLE, main (12T)	B15
AXLE, wheel	C15
*	D 4
BALL	B 5
*	B12
*	B13
*	C10
*	C10
BAND, rim (2.75-18)	C15
*	D 3
BAND, seat	C13
BAND, switch cord	D13
BAND, tool	C 7
BAR, shift fork guide 1	C 3
BAR, tension	D 3
BASE, magneto	B 4
BASE, taillight	D11
BATTERY ASSY (F.B. 6N4A-4D)	D12
BATTERY ASSY (G.S. 6N4A-4D)	D12
BEARING (B6203Z)	B15
BEARING (B6204CS)	B 3
BEARING (B6301)	C15
*	D 3
BEARING (B6303)	B15
BEARING, cylindrical	B 3
*	B 3
*	D14
*	D14
BODY ASSY, headlight	D10
BODY, cap	C 8
BODY, float chamber 1	B 7
BOLT	B 6
*	B 9
*	B12
*	C 2
*	C 3
*	C 4
*	C 5
*	C 6
*	C 6
*	C 6
*	C 6
*	C13
*	C13

PARTS NAME INDEX

DESCRIPTION	GRID NO.
BOLT	C13
*	C13
*	D 2
*	D 2
*	D 3
*	D 3
*	D 3
*	D 3
*	D 5
*	D 6
*	D 7
*	D10
*	D11
*	D11
*	D11
*	D12
*	D13
*	D13
BOLT 1	C11
BOLT, cap	C11
BOLT, flange	C 5
*	C 5
BOLT, hexagon socket head	C11
BOLT, set	B13
BOLT, stud	B 2
BOLT, union	D 6
BOLT, washer based	C10
BOLT, with washer	B13
*	C10
BOOT	C11
BOOT, master cylinder	D 6
BOSS, clutch	B13
BOSS, kick crank	B12
BRACKET, ignition coil	D12
BRACKET, licence	D11
BRACKET, master cylinder	D 6
BRACKET, meter	D 9
BRACKET, reflector 1	D11
BRACKET, seat	C13
BRAKE PAD KIT, front	D 2
BRAKE SHOE COMP.	D 3
BRAKE SHOE PLATE ASSY	D 3
BREED SCREW KIT	D 2
BULB (6V-1.7W)	D 9
*	D 9
BULB (6V-10W)	D 8
*	D 8

PARTS NAME INDEX

DESCRIPTION	GRID NO.
BULB (6V-15/15W)	D10
BULB (6V-2W)	D11
BULB (6V-3W)	D 9
BULB (6V-5W)	D11
BUSH	C15
BUSH 1	C 9
BUSH, solid	B10
BUSH, diaPhra&m	D 6
*	D 6
CABLE, clutch	D 5
CABLE, Pump	D 5
CABLE, throttle 1	D 5
CABLE, throttle 2	D 5
CALIPER ASSY (RIGHT)	D 2
CAMSHAFT	D 3
CAP	B 7
CAP ASSY	C12
CAP, cleaner case 1	B 6
CAP, Grip lower	D 5
CAP, Grip upper	D 5
CAP, Plunger	B 8
CAP, reservoir	D 6
CARBURETOR ASSY 1	B 7
CASE, air cleaner 1	B 6
CASE, chain	C 9
CHAIN, drive (DID420M 106L)	D 3
CIRCLIP	B 3
*	B 5
*	B12
*	B12
*	B12
*	B15
*	B15
*	C 3
*	C 3
*	C 4
*	C 4
*	D 7
*	D 7
*	D14
*	D14
*	D14
CLAMP	B 4
CLAMP, hose	B 6
*	B 6
CLIP	B 5

PARTS NAME INDEX

DESCRIPTION	GRID NO.
CLIP	B 6
*	B 7
*	B12
*	C 8
*	C12
*	D 4
*	D 9
CLIP, oil seal	C11
CLIP, Plunger	B 8
CLUTCH ASSY	B13
CLUTCH, meter	C15
COIL, lighting 1	B 4
COIL, source	B 4
COLLAR	B 3
*	B15
*	C15
*	D 4
*	D 4
*	D 5
CONDENSER 1	B 4
CONNECTING ROD ASSY	D14
CONNECTOR, cable	D 5
CONTACT BREAKER ASSY	B 4
CORD, taillight	D11
COVER, adjust Pulley	B 5
COVER, ball race 2	C10
COVER, crankcase 1	B11
COVER, crankcase 2	B11
COVER, double seat	C13
COVER, footrest	D 7
COVER, Generator	B11
COVER, hub dust	C15
COVER, kick lever	B12
COVER, oil Pump	B11
*	B11
COVER, outer 1	C11
COVER, Plunger caP	B 8
COVER, rear footrest	C 9
COVER, shift Pedal	C 4
COVER, side (L.H)	C 7
*	C 7
COVER, side (R.H)	C 7
*	C 7
COVER, spring	B12
COVER, tail	C13
*	C13
COVER, upper 1	C11
COVER, upper 2	C11

PARTS NAME INDEX

DESCRIPTION	GRID NO.
CRANK 1	B 3
CRANK 2	B 3
CRANK, kick	B12
CRANKCASE 1	B10
CRANKCASE 2	B10
CRANKSHAFT ASSY	B 3
CROWN, handle	C10
CUP, filter	C12
CYLINDER COMP., front fork	C11
CYLINDER KIT, master	D 6
*	D 6
CYLINDER 1	B 2
DAMPER	D 9
*	D 9
DAMPER, locating 1	C 8
*	C12
DAMPER, locating 2	C12
DAMPER, seat	C13
DAMPER, side cover	C 7
DIAPHRAGM, reservoir	D 6
*	D 6
DIODE	D12
DISC, brake	D 2
DOUBLE SEAT ASSY	C13
DUCT	B 6
ELEMENT, air cleaner	B 6
EMBLEM	C 7
*	C14
EMBLEM 4	C12
END, cable	D 5
FLANGE, spacer	C15
*	D 3
FLASHER RELAY ASSY	D12
FLOAT	B 7
FLYWHEEL MAGNETO ASSY	B 4
FOOTREST 1	D 7
FOOTREST, rear 1	C 9
FORK, shift 1	C 3
FORK, shift 2	C 3
FORK, shift 3	C 3
FRAME COMP	C 5
FRONT FENDER COMP.	C 6
FRONT FLASHER LIGHT ASSY 1	D 8
*	D 8
FRONT FORK ASSY	C11
FRONT REFLECTOR ASSY	D11
FRONT STOP SWITCH ASSY	D13
FUEL COCK ASSY 1	C12

PARTS NAME INDEX

DESCRIPTION	GRID NO.
FUEL TANK COMP.	C12
*	C12
FUSE (6V-10A)	D12
FUSE HOLDER ASSY	D12
GASKET	B 5
*	B 7
*	B 8
*	B10
*	C11
*	C11
*	C11
*	C12
*	C12
*	D14
*	D15
GASKET KIT	D14
GASKET, caP	C 8
GASKET, crankcase cover	B11
*	D15
GASKET, cylinder	B 2
*	D14
GASKET, cylinder head 1	B 2
*	D14
GASKET, drain	C 3
*	D15
GASKET, drain Plug	C11
GASKET, exhaust Pipe	B 9
*	D15
GASKET, float chamber	B 7
*	D14
GASKET, level Gauge	C 8
GASKET, manifold	B 6
GASKET, muffler	B 9
*	D15
GASKET, Pump case	B 5
*	D14
GASKET, valve seat	B 6
*	D15
GAUGE, level	C 7
*	C 8
GEAR, drive	C15
GEAR, drive (7T/21T)	C 2
GEAR, driven (9T)	C 2
GEAR, kick (24T)	B12
GEAR, kick idle (25T)	B12
GEAR, meter	C15
GEAR, Primary drive (19T)	B13
GEAR, Pump drive (28T)	B 5

PARTS NAME INDEX

DESCRIPTION	GRID NO.
GEAR, 1st wheel (39T)	B15
GEAR, 2nd Pinion (17T)	B15
GEAR, 2nd wheel (34T)	B15
GEAR, 3rd Pinion (21T)	B15
GEAR, 3rd wheel (30T)	B15
GEAR, 4th Pinion (24T)	B15
GEAR, 4th wheel (27T)	B15
GEAR, 5th Pinion (26T)	B15
GEAR, 5th wheel (25T)	B15
GRAPHIC, fuel tank 1	C12
GRAPHIC, fuel tank 2	C12
GRAPHIC, tail cover	C14
*	C14
GRIP (L.H)	D 5
GRIP (R.H)	D 5
GROMMET	D 3
GUIDE, cover lower	C11
GUIDE, spring	B12
*	C11
HANDLEBAR	D 5
HEAD, cylinder	B 2
HEADLIGHT UNIT ASSY	D10
HINGE, seat	C13
HOLDER	B 7
HOLDER, brake hose 1	D 6
HOLDER, brake hose 2	D 6
HOLDER, cable	C 6
HOLDER, cable 1	C11
HOLDER, handle lower	C10
HOLDER, handle upper	C10
HOLDER, lever 1	D13
HOLDER, oil Pipe	B 5
HOOK, helmet	C13
HOOK, spring	B14
HORN	D12
HOSE	B 5
*	C 8
*	C12
*	D12
HOSE, brake 1	D 6
HOUSING ASSY, tachometer	C 2
HOUSING, gear	C15
HOUSING, Push screw	B14
HUB, front	C15
HUB, rear	D 3
IGNITION COIL ASSY	D12
INNER TUBE COMP. 1	C11
JET, main (#200)	B 7

PARTS NAME INDEX

DESCRIPTION	GRID NO.
JET, main (#210)	B 7
JET, main (#220)	B 7
JET, Pilot (#22.5)	B 7
JOINT, air cleaner 1	B 6
JOINT, carburetor	B 6
JOINT, chain	D 3
KEY, straight	B13
KEY, woodruff	B 3
KICK AXLE ASSY	B12
LEAD WIRE ASSY	B 4
LENS ASSY	D10
LENS, flasher	D 8
*	D 8
LENS, level gauge	C 8
LENS, taillight	D11
LEVER HOLDER ASSY 1	D13
LEVER 1	D13
LEVER 2	D13
LEVER, camshaft	D 3
LEVER, cock	C12
LEVER, Push	B13
LUBRICATOR	B 4
MAIN AXLE COMP.	B15
MAIN SWITCH ASSY	D12
MANIFOLD, intake	B 6
MASTER CYLINDER ASSY	D 6
*	D 6
METAL, worm shaft outer	B 5
MIRROR ASSY	D 5
*	D 5
MOLD, seat (LEFT)	C13
*	C13
MOLD, seat (RIGHT)	C13
*	C13
MUFFLER ASSY 1	B 9
NEEDLE	B 7
NEEDLE VALVE ASSY	B 7
NET, filter 2	C12
NEUTRAL SWITCH ASSY	D12
NOZZLE	B 5
*	B 6
NOZZLE, main	B 7
NUT	B 2
*	B 3
*	B 5
*	B 9
*	B 9
*	B13

PARTS NAME INDEX

DESCRIPTION	GRID NO.
NUT	B13
*	B13
*	B15
*	C 4
*	C 6
*	C 9
*	C10
*	C10
*	C12
*	C13
*	D 3
*	D 3
*	D 4
*	D 4
*	D 5
*	D 7
*	D 8
*	D10
*	D11
*	D11
*	D13
NUT, cable adjusting	B 7
NUT, castle	C15
*	D 2
*	D 4
NUT, crown	C 9
NUT, flange	C 5
NUT, muffler Joint	B 9
NUT, ring	B 9
NUT, u	D13
*	D13
O-RING	B11
*	B13
*	C 2
*	D15
*	D15
OIL PUMP ASSY	B 5
OIL SEAL	B 3
*	B 3
*	B 5
*	B12
*	B14
*	B15
*	C 4
*	C11
*	C15
*	C15

PARTS NAME INDEX

DESCRIPTION	GRID NO.
OIL SEAL	D 3
*	D 3
*	D15
*	D15
*	D15
*	D15
*	D15
*	D15
OIL SEAL KIT	D15
PEDAL, brake	D 7
PEDAL, shift	C 4
PIN	C13
*	D 7
PIN, clevis	C 9
PIN, cotter	B 7
*	C 3
*	C 9
*	C15
*	D 2
*	D 4
*	D 4
*	D 7
PIN, crank 1	B 3
*	D14
PIN, dowel	B 5
*	B10
*	B11
*	B11
*	C 3
*	C 3
*	C 3
PIN, float	B 7
PIN, piston	B 3
*	D14
*	D14
*	D14
PIN, spring	C15
PIPE	B 8
*	B 8
PIPE, exhaust 1	B 9
PIPE, oil tank breather	C 8
PISTON (STD)	B 3
*	B 3
*	D14
*	D14
PISTON (1ST O/S 0.25MM)	B 3
*	D14

PARTS NAME INDEX

DESCRIPTION	GRID NO.
PISTON (2ND O/S 0.50MM)	B 3
*	D14
PISTON ASSY (STD)	D14
PISTON ASSY (1ST O/S)	D14
PISTON ASSY (2ND O/S)	D14
PISTON ASSY, caliper	D 2
PISTON RING SET (STD)	B 3
*	D14
PISTON RING SET (1ST O/S)	B 3
*	D14
PISTON RING SET (2ND O/S)	B 3
*	D14
PLATE, adjusting	B 5
PLATE, clutch 1	B13
PLATE, cover	B15
PLATE, friction	B13
PLATE, Pressure 1	B13
PLATE, side 1	C 3
PLATE, stopper	C 3
PLATE, stopper 2	C 3
PLATE, thrust 2	B13
*	B13
PLUG CAP ASSY	D12
PLUG, drain	B 8
*	C11
PLUG, spark (NGK B7HS)	B 2
PLUG, straight	B10
PLUG, straight screw	B10
PLUNGER, starter	B 7
PRIMARY DRIVEN GEAR COMP.	B13
PULLER, chain 2	D 4
RACE, ball 1	C10
*	C10
RACE, ball 2	C10
*	C10
REAR ARM COMP.	C 9
REAR FENDER COMP.	C 6
RECTIFIER ASSY	B 4
*	B 4
REED VALVE ASSY	B 6
REED, valve	B 6
RESERVOIR CAP ASSY	D 6
RETAINER, clutch	C15
RIM (1.40-18)	C15
*	D 3
RIM, headlight	D10
RING, cushion	B13
RING, stop	C15

PARTS NAME INDEX

DESCRIPTION	GRID NO.
RIVET	C13
ROD, brake	D 7
ROD, connecting	B 3
*	D14
ROD, Push 1	B13
ROD, Push 2	B13
ROLLER, shift lever	C 4
ROTOR ASSY	B 4
SCRAPER, oil	B11
SCREW	C 4
*	D13
SCREW, air adjusting	B 7
SCREW, blind	B 5
SCREW, breed	D 6
SCREW, cable adjusting	B 7
SCREW, flat head	B 4
*	C 3
*	C 3
*	D 6
SCREW, lever fitting	C12
SCREW, oval head	C10
SCREW, Pan head	B 4
*	B 4
*	B 4
*	B 4
*	B 4
*	B 5
*	B 6
*	B 6
*	B 6
*	B 8
*	B 9
*	B10
*	B10
*	B10
*	B11
*	B11
*	B11
*	B11
*	B11
*	B11
*	B14
*	B15
*	C 7
*	C 7
*	C 8
*	C 9
*	D 5

PARTS NAME INDEX

DESCRIPTION	GRID NO.
SCREW, Pan head	D 6
*	D10
*	D11
*	D12
*	D12
*	D12
*	D12
SCREW, Pan head with washer	B 6
SCREW, Push	B13
SCREW, throttle	B 7
SEAL	B 6
SEAL, Guard	C 9
SEAL, Push rod	B13
*	D15
SEAT LEVER ASSY	C13
SEAT, battery	D12
SEAT, spring	B 7
SEAT, spring upper	C11
SHAFT	C 4
SHAFT, brake Pedal	D 7
SHAFT, main stand	D 7
SHAFT, Pivot	C 9
SHAFT, worm	B 5
SHIFT CAM ASSY	C 3
SHIFT LEVER ASSY	C 4
SHIFT SHAFT ASSY	C 4
SHIM	B12
*	C 2
SHIM (0.3T)	B 5
SHIM (0.5T)	B 5
SHIM (0.6T)	B15
SHIM (1.0T)	B 5
SHIM, rod	C15
SHOCK ABSORBER ASSY, rear	C 9
SILENCER, exhaust	B 9
SOCKET	D10
SOCKET ASSY	D 9
SOCKET, meter	D 9
SPACER	B13
*	C15
*	D 3
SPEED NUT	C13
SPEEDOMETER ASSY	D 9
SPEEDOMETER CABLE ASSY	D 9
SPOKE SET, front	C15
SPOKE SET, rear	D 3
SPRING, air adjusting	B 7

PARTS NAME INDEX

DESCRIPTION	GRID NO.
SPRING, compression	B 5
*	B12
*	B13
*	C 3
*	D 7
*	D13
SPRING, front fork	C11
SPRING, lever	C12
SPRING, Plunger	B 8
SPRING, rebound	C11
SPRING, reflector	D10
SPRING, tension	B13
*	D 3
*	D 7
SPRING, throttle valve	B 7
SPRING, torsion	B12
*	C 4
*	D 7
SPROCKET, drive (11T)	B15
SPROCKET, drive (12T)	B15
SPROCKET, drive (13T)	B15
SPROCKET, driven (48T)	D 3
STAND, main	D 7
STAY, flasher	D 8
*	D 8
STAY, muffler 1	B 9
STAY, muffler 2	B 9
STEERING LOCK ASSY	C10
STOP SWITCH ASSY	D12
STOPPER	B10
*	B12
*	C 2
*	C13
STOPPER, cam	C 3
STOPPER, main stand	D 7
STOPPER, reed valve	B 6
SWITCH, handle 4	D13
TACHOMETER ASSY	D 9
TACHOMETER CABLE ASSY	D 9
TAILLIGHT UNIT ASSY	D11
TANK, oil	C 8
TIRE (2.50-18)	C15
TIRE (2.75-18)	D 3
TOOL KIT	C 7
TOP, mixing chamber	B 7
TUBE (2.50-18)	C15
TUBE (2.75-18)	D 3
TUBE, outer 1	C11

PARTS NAME INDEX

DESCRIPTION	GRID NO.
TUBE, outer 2	C11
TUBE, throttle guide	D 5
UNDER BRACKET COMP.	C11
VALVE	C12
VALVE, throttle 1	B 7
WASHER	B 3
*	C10
*	D 2
*	D 3
*	D 9
*	D11
*	D14
WASHER 1	B12
WASHER, cap	C11
WASHER, conical spring	B13
*	B13
WASHER, lock	B15
WASHER, needle valve	B 7
WASHER, Plain	B 2
*	B 4
*	B 6
*	D10
WASHER, Plate	B 3
*	B 5
*	B 5
*	B 6
*	B 6
*	B12
*	B12
*	C 4
*	C 6
*	C 6
*	C 6
*	C 7
*	C 7
*	C 8
*	C 9
*	C 9
*	C 9
*	C10
*	C13
*	C13
*	C15
*	C15
*	C15
*	D 2
*	D 2
*	D 4

PARTS NAME INDEX

DESCRIPTION	GRID NO.
WASHER, Plate	D 6
*	D 7
*	D10
*	D11
*	D11
*	D13
WASHER, sPecial	C13
WASHER, sPrinG	B 3
*	B 4
*	B 5
*	B 6
*	B 8
*	B 9
*	B 9
*	B 9
*	B 9
*	C 5
*	C 6
*	C 6
*	C 6
*	C 9
*	C 9
*	C10
*	C13
*	C13
*	D 2
*	D 4
*	D 4
*	D 6
*	D 6
*	D 7
*	D 8
*	D10
*	D11
*	D11
*	D12
*	D12
*	D12
*	D12
*	D12
*	D12
*	D13
WASHER, wave	B12
WIRE HARNESS ASSY	D12

M16

