



**PARTS
CATALOGUE
CATALOGO
DE REPUESTOS**

JYM90T (4RT6)'02 AXIS

YAMAHA
GENUINE
Parts & Accessories

114RT-200E1

FOREWORD

This Parts Catalogue is related to the parts for the model(s) in the below frame. When you are ordering replacement parts, please refer to this Parts Catalogue and quote both part numbers and part names correctly.

JYM90T(4RT6)

1. Modifications or additions which have been made after issue of the Parts Catalogue will be announced in the Yamaha Parts News.
It is advisable that you make necessary corrections to the Parts Catalogue according to the Yamaha Parts News.

2. Abbreviations
The following abbreviations are used in this Parts Catalogue.

- "UR" Use specified parts number.
- "UN" Use as many as needed.
- "AP" Alternate Parts
- "LM" Local Made (Parts need to be ordered locally)
- "F#" Frame No. (Applicable machine No.)

3. Parts, which are to be supplied in an assembly, are listed with a dot(.) in front of the part name as shown below.

EXAMPLE
 CARBURETOR ASSY
 .JET, PILOT
 .NOZZLE, MAIN

4. Number of component for assembly
 The numeral appearing to the right of each component part indicates the quantity of parts for each assembly unit.

EXAMPLE

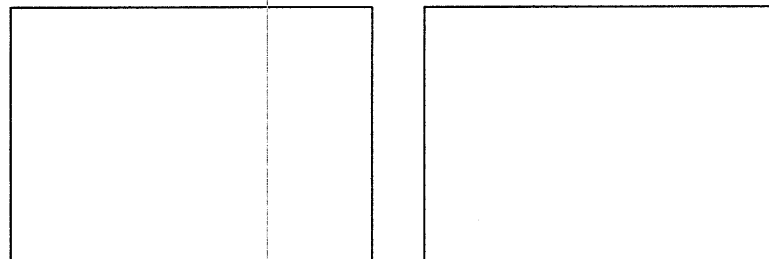
PART NO.	DESCRIPTION	Q'TY	REMARKS
2F5-83310-60	FRONT FLASHER LIGHT ASSY	2	
115-83311-60	.BULB (6V-18W)	1	

5. Applicable colors of graphics are represented in the "REMARKS" as shown below.

PART NO.	DESCRIPTION	Q'TY	REMARKS
2N4-24110-00-X5	FUEL TANK COMP.	1	MXR
3J1-24240-10	.GRAPHIC, FUEL TANK	1	FOR MXR

6. Applicable Serial No. and Color Code

Frame Serial No.	
Engine Serial No.	



Color Code	Color Name	Abbreviation
0376	DEEP RED COCKTAIL 2	DRC2
0564	DEEP PURPLISH BLUE METALLIC C	DPBMC

7. Note that the illustration for reference in finding parts numbers, not to be used for assembling. When assembling, please use the applicable service manual.

8. The asterisk (*) before a reference number indicates modification items after the first edition.

CONTENTS

ENGINE

CYLINDER	1
CRANKSHAFT. PISTON	2
AIR SHROUD. FAN	3
OIL PUMP	4
INTAKE	5
CARBURETOR	6
EXHAUST	7
CRANKCASE	8
STARTER	10
CLUTCH	11
TRANSMISSION	13

CHASSIS

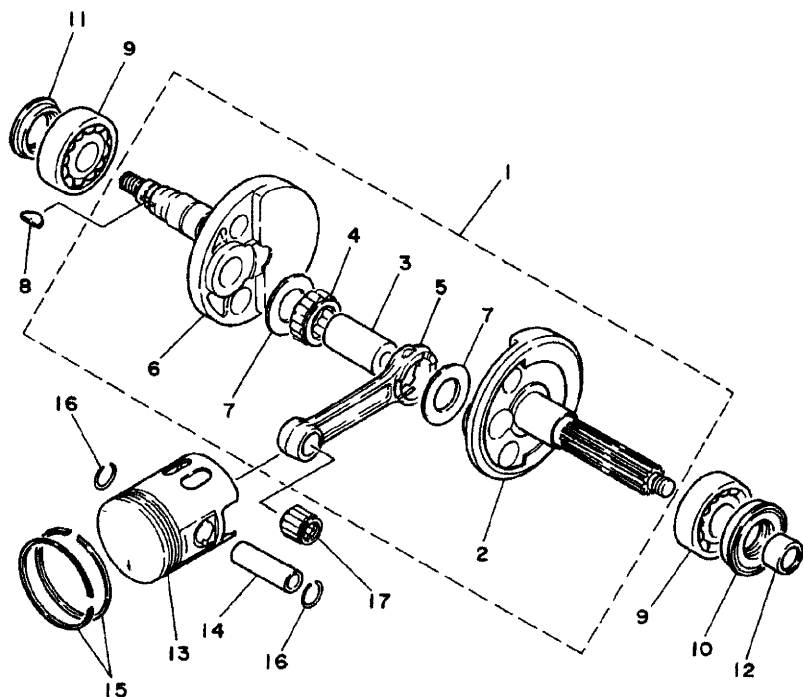
FRAME	14
FENDER	15
SIDE COVER	16
OIL TANK	17
REAR SUSPENSION	18
FRONT FORK	19
FUEL TANK	21
SEAT. CARRIER	22
FRONT WHEEL	23
FRONT BRAKE CALIPER	24
REAR WHEEL	25
STEERING HANDLE. CABLE	26
FRONT MASTER CYLINDER	27
STAND. FOOTREST	28
LEG SHIELD	30
COWLING 1	31

GENERATOR	32
METER	33
FLASHER LIGHT	34
TAILLIGHT	35
HANDLE SWITCH. LEVER	36
ELECTRICAL 1	37
ELECTRICAL 2	38

FIG. 2 CRANKSHAFT. PISTON

CIGUENAL. PISTON

REF. NO.	PART NO. CODIGO NO.	DESCRIPTION DESCRIPTION	4RT6				REMARKS OBSERVACION
1	4RT-Y1141-00	CRANKSHAFT ASSY	1				
2	4RT-E1412-00	.CRANK 1	1				
3	2GM-11681-01	.PIN, CRANK 1	1				
4	93310-41810	.BEARING	1				
5	3R1-11651-01	.ROD, CONNECTING	1				
6	4RT-E1422-00	.CRANK 2	1				
7	90209-18112	.WASHER	2				
8	90280-03017	KEY, WOODRUFF	1				
9	93306-20458	BEARING	2				
10	93102-20878	OIL SEAL	1				
11	93101-20839	OIL SEAL	1				
12	90387-166L6	COLLAR	1				
13	4RT-E1631-01	PISTON (STD)	1				
14	4RT-E1633-00	PIN, PISTON	1				
15	4DM-11603-00	PISTON RING SET (STD)	1				
16	93450-13130	CIRCLIP	2				
17	93310-11268	BEARING	1				

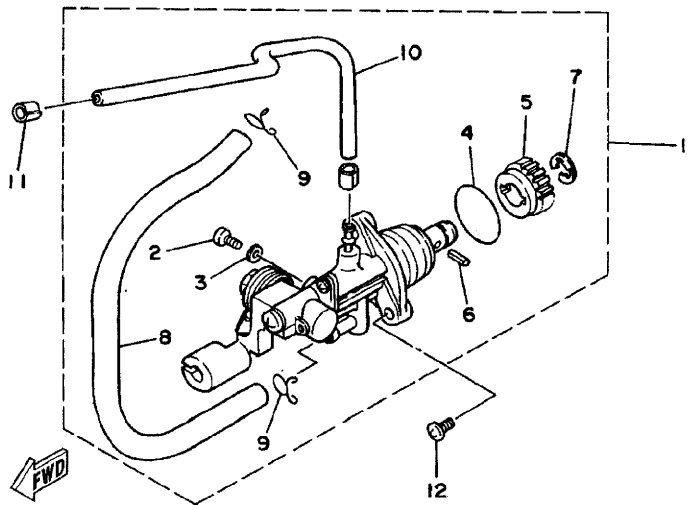
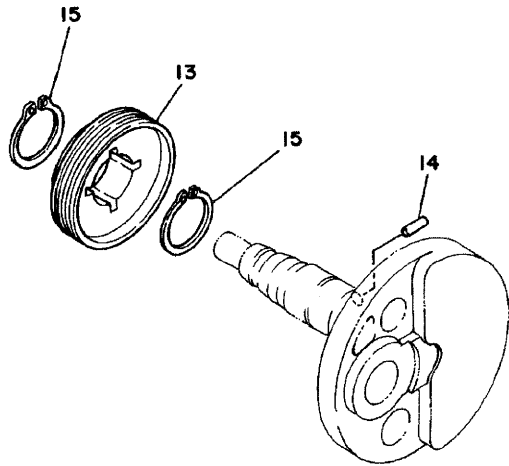


3WF1010-0020

FIG. 4 OIL PUMP

BOMBA DE ACEITE

REF. NO.	PART NO. CODIGO NO.	DESCRIPTION DESCRIPTION	4RT6				REMARKS OBSERVACION
1	3VR-13100-02	OIL PUMP ASSY	1				
2	3WF-13185-00	.BOLT, BREATHER	1				
3	1YU-13187-00	.GASKET, BREATHER BOLT	1				
4	1YU-13473-00	.O-RING	1				
5	3AA-13124-00	.GEAR WORM WHEEL (40T)	1				
6	1YU-13516-00	.PIN, DOWEL	1				
7	1YU-13577-00	.CLIP	1				
8	90445-09005	.HOSE	1				
9	90467-08003	.CLIP	2				
10	90445-05431	.HOSE (L240)	1				
11	90468-02033	CLIP	1				
12	9850N-05014	SCREW, PAN HEAD	2				
13	4RT-E3178-00	GEAR, PUMP DRIVE	1				
14	93603-12827	PIN, DOWEL	1				
15	99009-19400	CIRCLIP	2				



4RT5200-1040

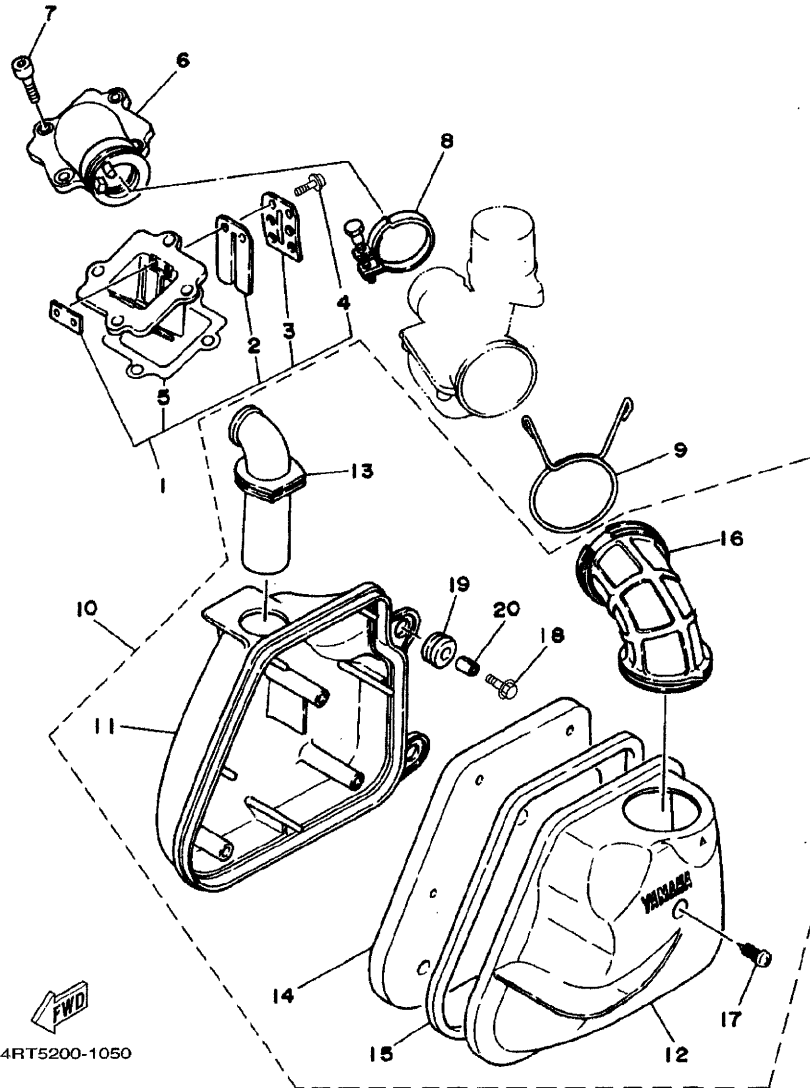
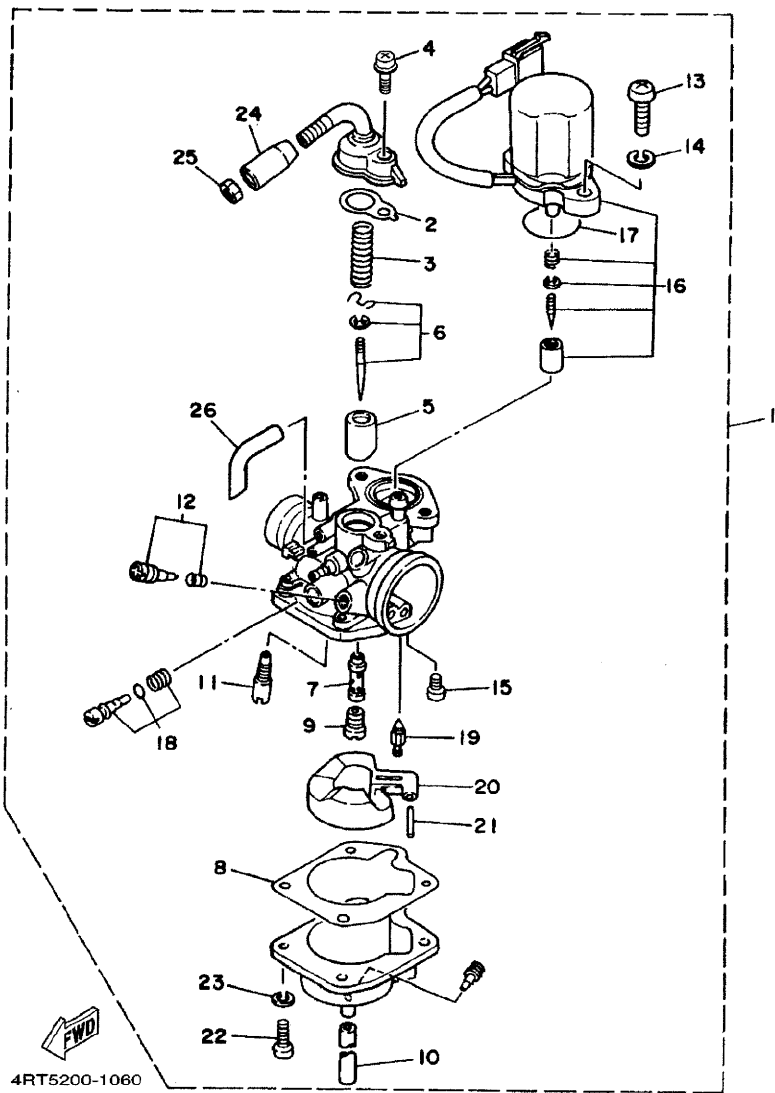


FIG. 5 INTAKE

ADMISION

REF. NO.	PART NO. CODIGO NO.	DESCRIPTION DESCRIPTION	4RT6			REMARKS OBSERVACION
1	4JC-13610-00	REED VALVE ASSY	1			
2	3KJ-13613-00	.REED, VALVE	2			
3	3KJ-13616-00	.STOPPER, REED VALVE	2			
4	97607-03106	.SCREW, PAN HEAD WITH WASHER	4			
5	4RT-E3621-00	.GASKET, VALVE SEAT	1			
6	3KJ-13555-00	MANIFOLD, INTAKE	1			
7	91318-06020	BOLT	4			
8	90450-32811	HOSE CLAMP ASSY	1			
9	90467-24140	CLIP	1			
10	4RT-E4410-01	AIR CLEANER ASSY.	1			
11	4RT-E4411-00	.CASE, AIR CLEANER 1	1			
12	4RT-E4412-00	.CAP, CLEANER CASE 1	1			
13	4RT-E4437-01	.DUCT	1			
14	4RT-E4451-00	.ELEMENT, AIR CLEANER	1			
15	4RT-E4452-00	.SEAL	1			
16	4RT-E4453-00	.JOINT, AIR CLEANER 1	1			
17	9770N-50125	.SCREW, TAPPING	3			
18	9760N-06220	.SCREW, PAN HEAD WITH WASHER	2			
19	90480-12497	.GROMMET	2			
20	90387-067V1	.COLLAR	2			



4RT5200-1060

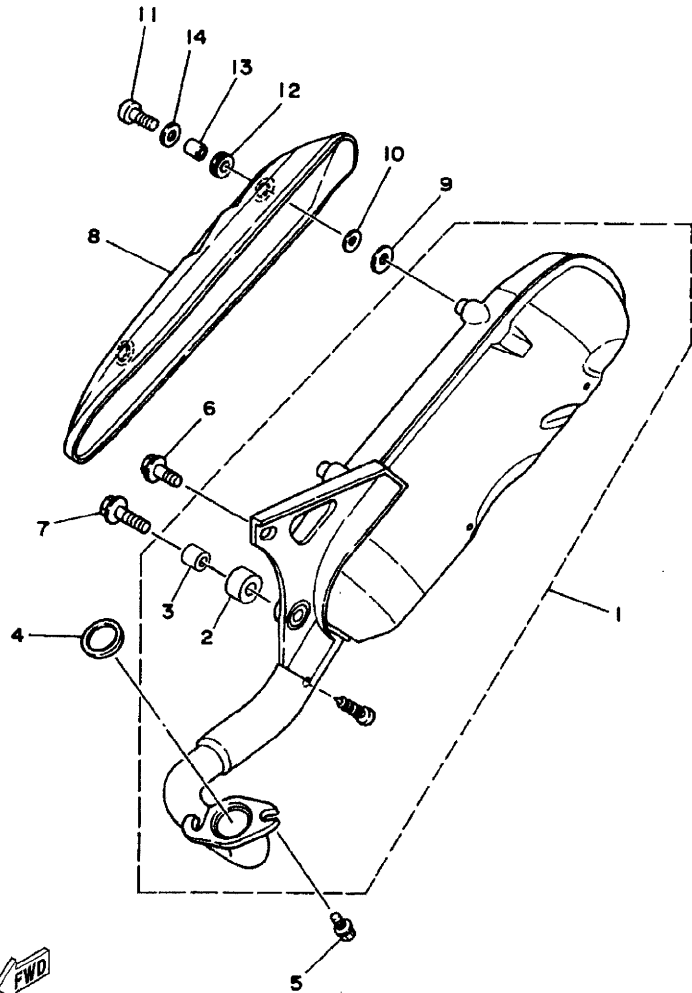
FIG. 6 CARBURETOR

CARBURADOR

REF. NO.	PART NO. CODIGO NO.	DESCRIPTION DESCRIPTION	4RT6	REMARKS OBSERVACION
1	4RT-E4301-10	CARBURETOR ASSY 1	1	
2	4JP-14561-00	.O-RING	1	
3	4JP-14331-00	.SPRING, THROTTLE VALVE	1	
4	97801-05014	.SCREW, PAN HEAD	1	
5	3WF-14312-30	.VALVE, THROTTLE 1 (CA3.0)	1	
6	4RT-1490J-00	.NEEDLE SET	1	
7	4FW-14341-00	.NOZZLE, MAIN	1	
8	14T-14384-00	.GASKET, FLOAT CHAMBER	1	
9	14T-14343-44	.JET, MAIN (#88)	1	
10	3KJ-14349-01	.PIPE	1	
11	3KJ-14353-20	.JET, PILOT (#40)	1	
12	4JP-14104-00	.AIR SCREW SET	2	
13	92580-06016	.SCREW	2	
14	92901-06100	.WASHER, SPRING	1	
15	98501-03006	.SCREW, PAN HEAD	1	
16	4RT-1410A-00	.STARTER SET	1	
17	1HV-14147-00	.O-RING	1	
18	3YJ-14103-00	.THROTTLE SCREW SET	1	
19	2JA-14392-00	.VALVE, NEEDLE	1	
20	1HV-14385-01	.FLOAT	1	
21	367-14386-00	.PIN, FLOAT	1	
22	97901-04116	.SCREW, WITH WASHER	4	
23	92901-04100	.WASHER, SPRING	4	
24	3KJ-26329-00	.CAP, RUBBER	1	
25	288-14161-00	.NUT, CABLE ADJUSTING	1	
26	2JA-14397-00	.PIPE	1	

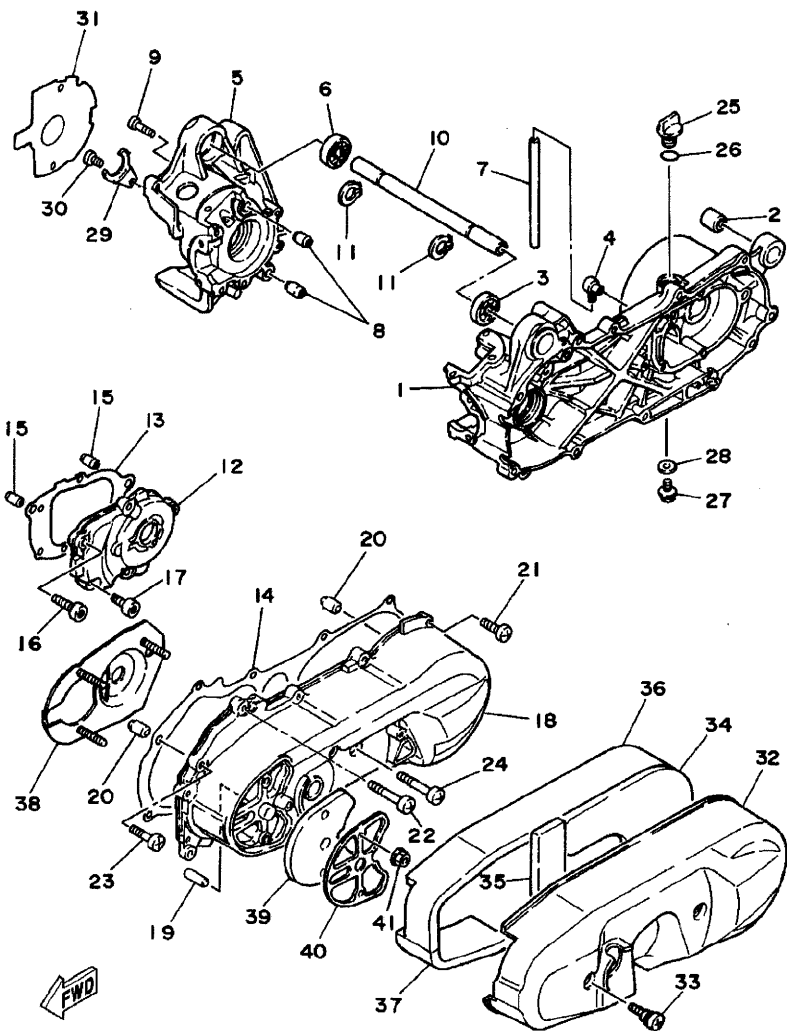
FIG. 7 EXHAUST

DESCARGA



4RT5200-1070

REF. NO.	PART NO. CODIGO NO.	DESCRIPTION DESCRIPTION	4RT6			REMARKS OBSERVACION
1	4RT-E4610-00	EXHAUST PIPE ASSY 1	1			
2	4RT-E4445-00	.GROMMET	1			
3	4RT-E4779-00	.COLLAR	1			
4	4RT-E4613-00	GASKET, EXHAUST PIPE	1			
5	90153-06061	SCREW, HEXAGON	2			
6	95817-08020	BOLT, FLANGE	1			
7	95817-08030	BOLT, FLANGE	1			
8	4RT-E4718-00	PROTECTOR, MUFFLER 1	1			
9	4RT-E4766-00	WASHER, PROTECTOR	2			
10	9290N-06200	WASHER	2			
11	98907-06016	SCREW, BIND	2			
12	90480-12237	GROMMET	2			
13	90387-060G7	COLLAR	2			
14	4RT-E4766-10	WASHER, PROTECTOR	2			



4RT5200-1080

FIG. 8 CRANKCASE

CARTER

REF. NO.	PART NO. CODIGO NO.	DESCRIPTION DESCRIPTION	4RT6	REMARKS OBSERVACION
1	4RT-E5111-00	CRANKCASE 1	1	
2	164-22216-00	BUSH, REAR SHOCK ABSORBER	1	
3	93306-003X1	BEARING	1	
4	4RT-E5371-00	BREATHER	1	
5	4RT-E5121-00	CRANKCASE 2	1	
6	93306-003X1	BEARING	1	
7	90446-11347	HOSE	1	
8	99530-12016	PIN, DOWEL	2	
9	9850L-06035	SCREW, PAN HEAD	6	
10	4RT-E5317-00	SPACER, ENGINE MOUNT	1	
11	99009-17400	CIRCLIP	2	
12	4RT-E5421-00	COVER, CRANKCASE 2	1	
13	4RT-E5461-00	GASKET, CRANKCASE COVER 2	1	
14	4RT-E5451-00	GASKET, CRANKCASE COVER 1	1	
15	99530-10114	PIN, DOWEL	2	
16	91318-06035	BOLT	2	
17	91318-06020	BOLT	3	
18	4RT-E5411-00	COVER, CRANKCASE 1	1	
19	4RT-E5659-00	SHAFT	1	
20	99530-10114	PIN, DOWEL	2	
21	9850L-06025	SCREW, PAN HEAD	7	
22	97880-06025	SCREW, PAN HEAD	1	
23	9850L-06035	SCREW, PAN HEAD	2	
24	9850N-06065	SCREW, PAN HEAD	1	
25	4RT-E5363-00	PLUG, OIL	1	
26	93210-14104	O-RING	1	
27	9580N-08016	BOLT, FLANGE	1	

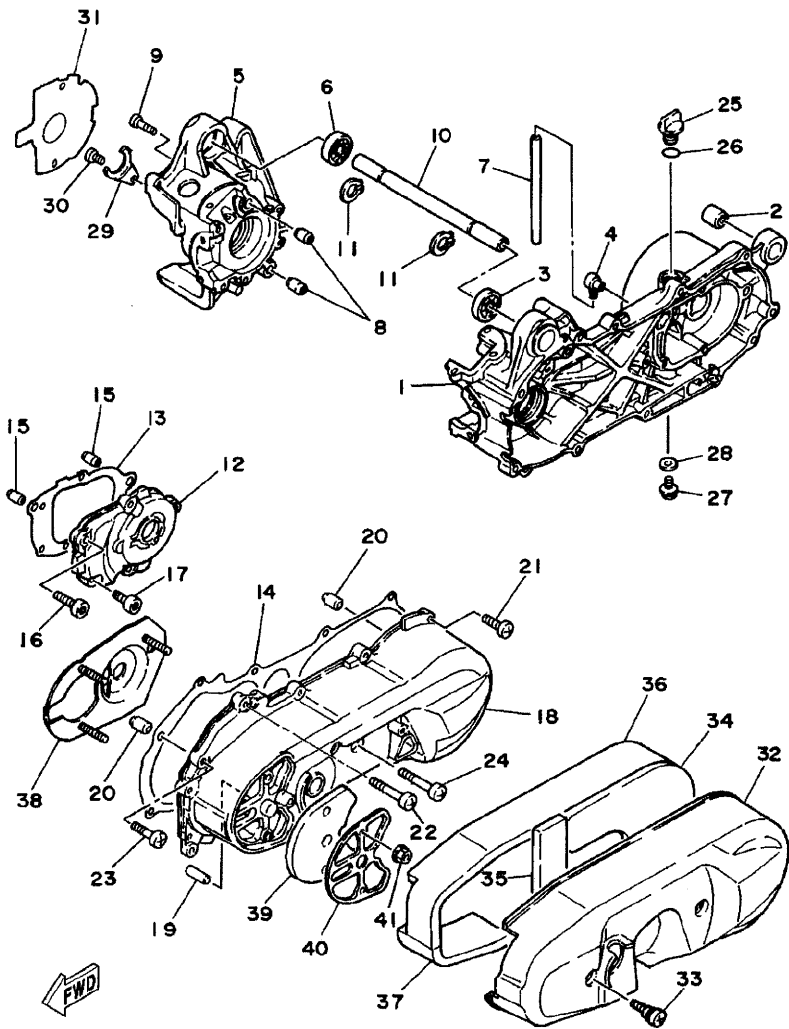
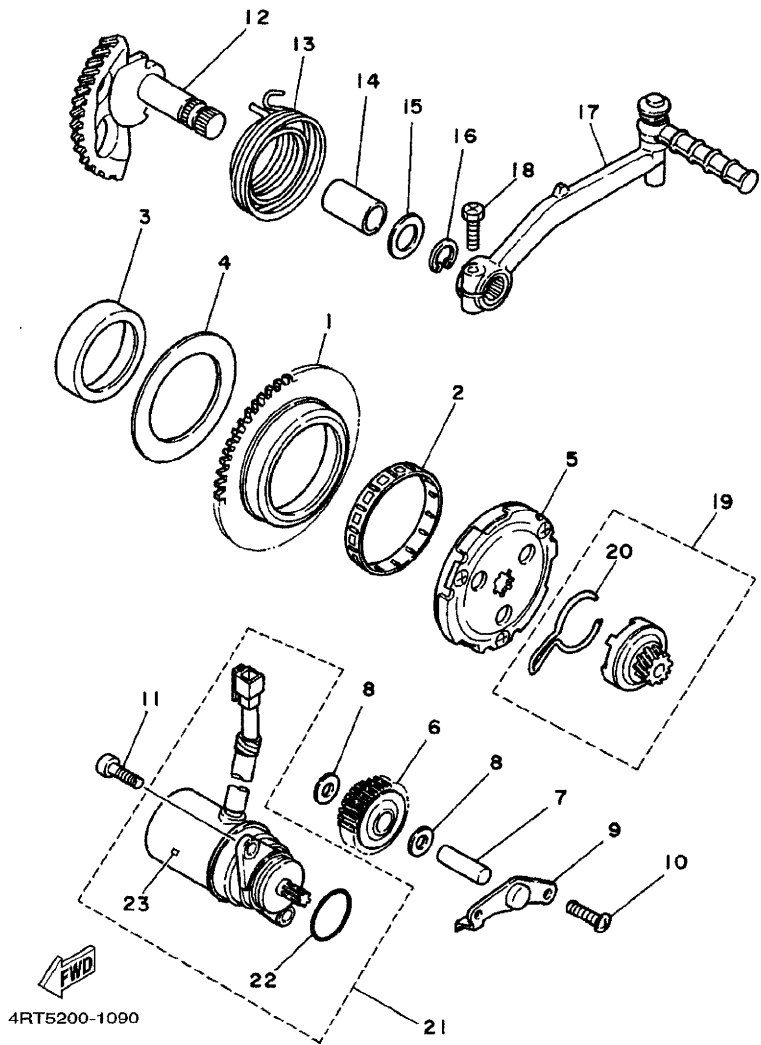


FIG. 8 CRANKCASE

CARTER

REF. NO.	PART NO. CODIGO NO.	DESCRIPTION DESCRIPTION	4RT6				REMARKS OBSERVACION
28	90430-08818	GASKET	1				
29	4RT-E5128-00	HOLDER	1				
30	9850N-06012	SCREW, PAN HEAD	1				
31	4RT-E5462-00	GASKET, CRANKCASE COVER 3	1				
32	4RT-E5431-00	COVER, CRANKCASE 3	1				
33	3KJ-15481-00	BOLT 1	2				
34	4RT-E5316-00	DAMPER, ENGINE MOUNT 1	1				
35	4RT-E5326-00	DAMPER, ENGINE MOUNT 2	1				
36	4RT-E5335-00	DAMPER 3	1				
37	4RT-E5337-00	DAMPER 4	1				
38	4RT-E5191-00	PLATE	1				
39	4RT-E5407-00	ELEMENT 1	1				
40	4RT-E5404-00	GUIDE, ELEMENT	1				
41	9570N-06500	NUT, FLANGE	3				

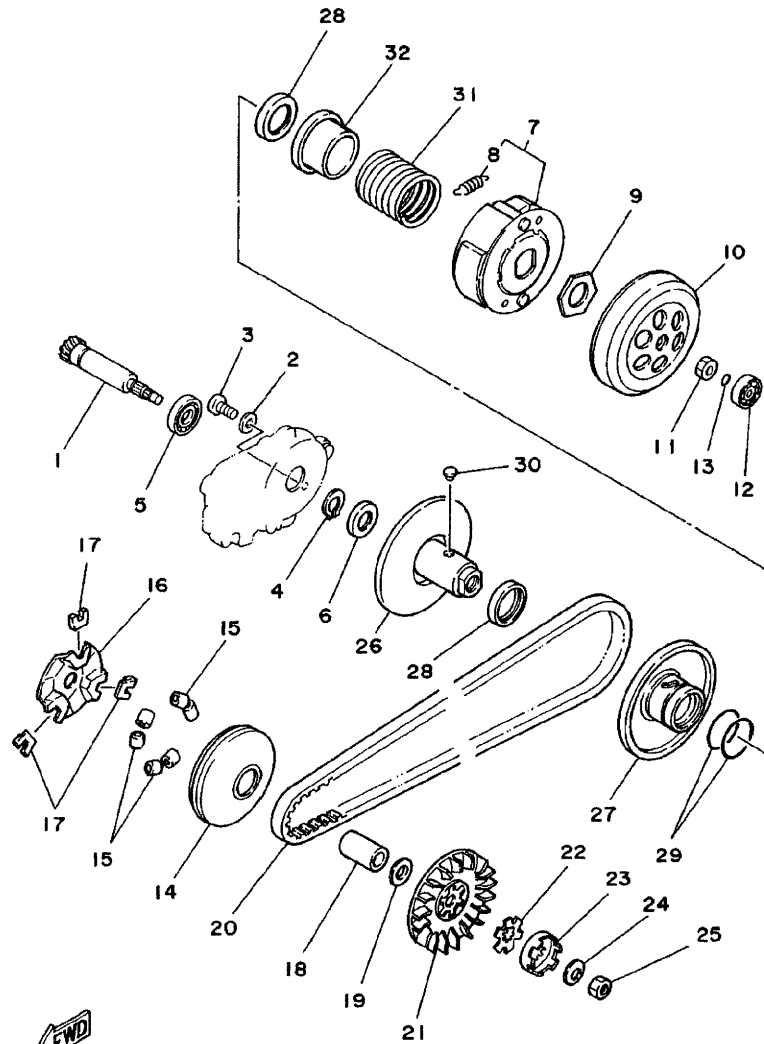


4RT5200-1090

FIG. 9 STARTER

ARRANQUE

REF. NO.	PART NO. CODIGO NO.	DESCRIPTION DESCRIPTION	4RT6				REMARKS OBSERVACION
1	3VR-15524-00	WHEEL, STARTER	1				
2	93310-255B7	BEARING	1				
3	3WF-15538-00	BOSS, GEAR 2	1				
4	90201-551P8	WASHER, PLATE	1				
5	4DM-E5570-00	STARTER CLUTCH ASSY	1				
6	3WF-15650-00	IDLE GEAR ASSY (47T)	1				
7	4RT-E3342-00	SHAFT, IDLE GEAR	1				
8	90201-08088	WASHER, PLATE	2				
9	3KJ-15532-00	PLATE, IDLE GEAR	1				
10	9850N-06012	SCREW, PAN HEAD	2				
11	91318-06020	BOLT	2				
12	4RT-E5601-00	KICK SHAFT ASSY	1				
13	90508-32609	SPRING, TORSION	1				
14	90380-15240	BUSH, SOLID	1				
15	90201-155G5	WASHER, PLATE	1				
16	99009-15400	CIRCLIP	1				
17	4RT-E5620-00	KICK CRANK ASSY	1				
18	90153-06008	SCREW, HEXAGON	1				
19	4RT-E5630-10	KICK PINION ASSY	1				
20	4RT-E5673-00	.CLIP	1				
21	4RT-H1800-00	STARTING MOTOR ASSY	1				
22	93210-23614	.O-RING	1				
23	4RT-H1801-00	.BRUSH SET	1				



3KJ1010-9100

FIG. 10 CLUTCH

EMBRAGUE

REF. NO.	PART NO. CODIGO NO.	DESCRIPTION DESCRIPTION	4RT6	REMARKS OBSERVACION
1	4RT-E6111-00	GEAR, PRIMARY DRIVE	1	
2	90201-06412	WASHER, PLATE	1	
3	9850L-06010	SCREW, PAN HEAD	1	
4	99009-17400	CIRCLIP	1	
5	93306-00325	BEARING	1	
6	93102-17841	OIL SEAL	1	
7	4RT-E6620-00	CLUTCH CARRIER ASSY	1	
8	17L-16626-00	.SPRING, CLUTCH WEIGHT 1	3	
9	90179-28415	NUT	1	
10	4RT-E6611-00	CLUTCH HOUSING COMP.	1	
11	90179-10609	NUT	1	
12	93300-63813	BEARING	1	
13	93210-06852	O-RING	1	
14	4RT-E7620-00	PRIMARY SLIDING SHEAVE COMP.	1	
15	5G6-17632-00	WEIGHT	6	
16	3NW-17623-01	CAM	1	
17	1NT-17653-00	SLIDER	3	
18	90387-165X0	COLLAR	1	
19	90201-163J6	WASHER, PLATE	1	
20	4RT-E7641-00	V-BELT	1	
21	2XX-17611-00	SHEAVE, PRIMARY FIXED	1	
22	90214-14054	WASHER, CLAW	1	
23	4RT-E5657-00	CLUTCH, ONEWAY	1	
24	90208-10012	WASHER, CONICAL SPRING	1	
25	90170-10219	NUT	1	
26	4RT-E7660-00	SECONDARY FIXED SHEAVE COMP.	1	
27	4RT-E7670-00	SECONDARY SLIDING SHEAVE	1	

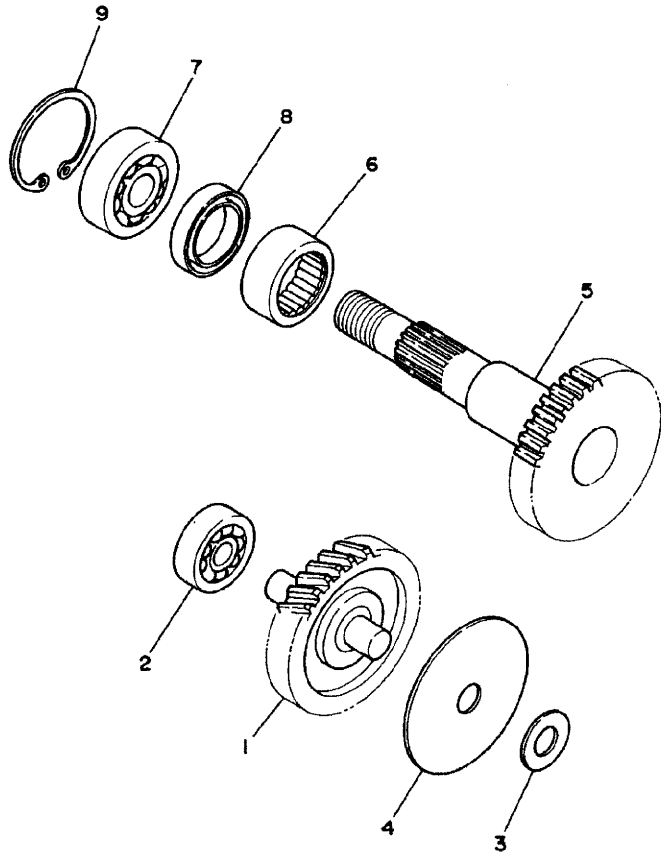


FIG. 11 TRANSMISION

TRANSMISION

REF. NO.	PART NO. CODIGO NO.	DESCRIPTION DESCRIPTION	4RT6			REMARKS OBSERVACION
1	4RT-E7410-00	MAIN AXLE COMP.	1			
2	93306-201Y6	BEARING	1			
3	90201-125L6	WASHER, PLATE	1			
4	90208-12042	WASHER, CONICAL SPRING	1			
5	4RT-E7420-00	DRIVE AXLE ASSY	1			
6	93315-42536	BEARING	1			
7	93306-004YK	BEARING	1			
8	93102-25879	OIL SEAL	1			
9	99009-42500	CIRCLIP	1			

 3WF1010-0110

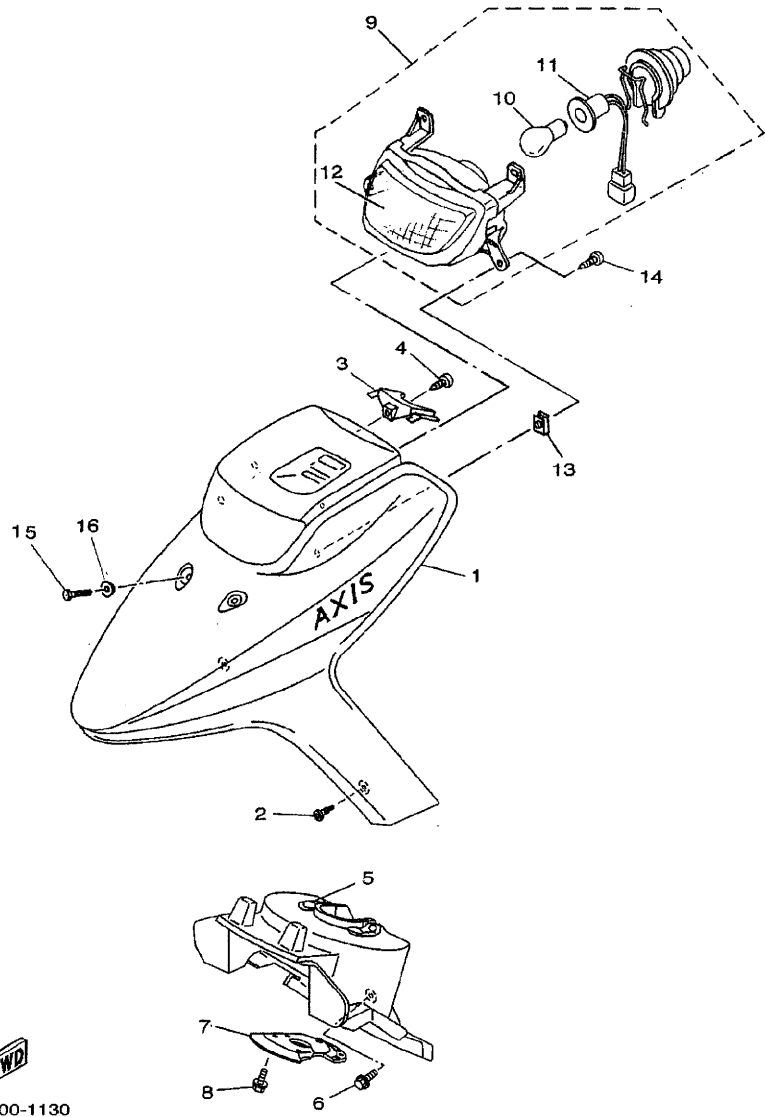
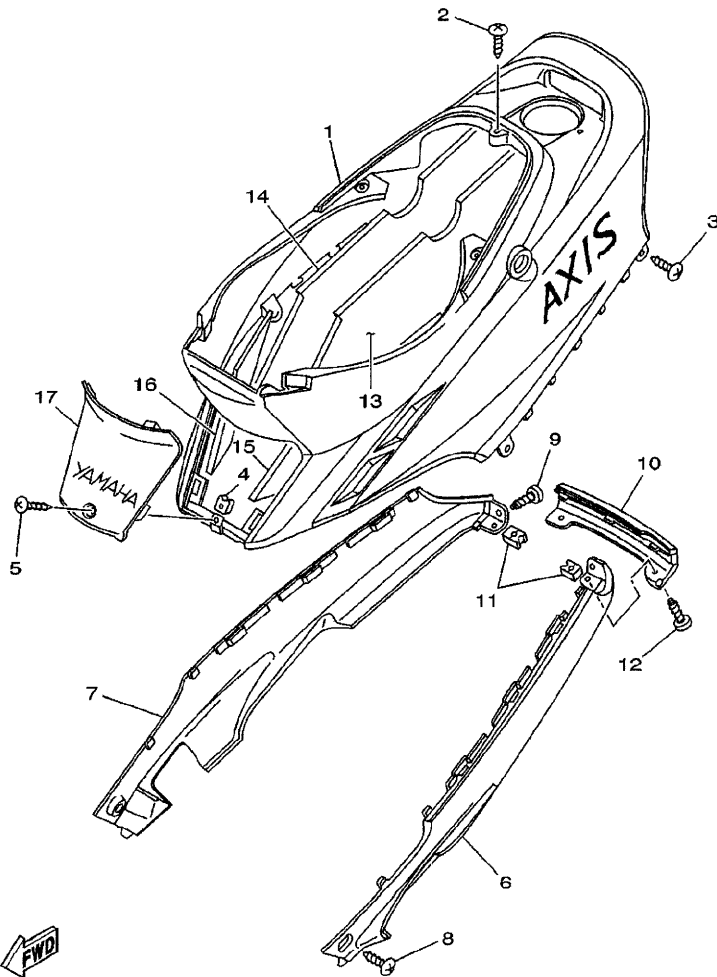


FIG. 13 FENDER

GUARDABARRO

REF. NO.	PART NO. CODIGO NO.	DESCRIPTION DESCRIPTION	4RT6	REMARKS OBSERVACION
1	4RT-W2151-02-P1	FRONT FENDER COMP.	1	UR DPBMC
	4RT-W2151-01-P9	FRONT FENDER COMP.	1	UR DRC2
2	90163-05802	SCREW, TAPPING	2	
3	4RT-F1523-00	PLATE 1	1	
4	97707-50016	SCREW, TAPPING	1	
5	4RT-F1552-00	FENDER, INNER	1	
6	9580N-06012	BOLT, FLANGE	1	
7	4RT-F1553-00	FENDER, INNER 2	1	
8	90119-06018	BOLT, WITH WASHER	2	
9	4RT-H4310-00	HEADLIGHT UNIT ASSY	1	
10	4RT-H4314-00	BULB, HEADLIGHT	1	
11	4RT-H4312-00	HOLDER, SOCKET	1	
12	4RT-H4320-00	LENS ASSY	1	
13	90183-05807	NUT, SPRING	4	
14	97707-50012	SCREW, TAPPING	4	
15	90105-06813	BOLT, WASHER BASED	2	
16	90387-062M9	COLLAR	2	



4RT5200-1140

FIG. 14 SIDE COVER

CUBIERTA LATERAL

REF. NO.	PART NO. CODIGO NO.	DESCRIPTION DESCRIPTION	4RT6		REMARKS OBSERVACION
1	4RT-W2171-02-P1	SIDE COVER ASSY 1	1		UR DPBMC
	4RT-W2171-02-P9	SIDE COVER ASSY 1	1		UR DRC2
2	97707-50016	SCREW, TAPPING	3		
3	97707-50012	SCREW, TAPPING	4		
4	90183-05807	NUT, SPRING	1		
5	97707-50012	SCREW, TAPPING	1		
6	4RT-F171L-10	MOLE, SIDE COVER 1	1		
7	4RT-F171M-10	MOLE, SIDE COVER 2	1		
8	97707-50016	SCREW, TAPPING	2		
9	97707-50016	SCREW, TAPPING	2		
10	4RT-F171N-10	MOLE, SIDE COVER 3	1		
11	90183-05807	NUT, SPRING	2		
12	97707-50012	SCREW, TAPPING	2		
13	4RT-F1778-00	DAMPER, LOCATING 1	1		
14	4RT-F1779-00	DAMPER, LOCATING 2	1		
15	4RT-F177M-00	DAMPER, LOCATING 3	1		
16	4RT-F177N-00	DAMPER, LOCATING 4	1		
17	4RT-W2172-02-P1	SIDE COVER ASSY 2	1		UR DPBMC
	4RT-W2172-02-P9	SIDE COVER ASSY 2	1		UR DRC2

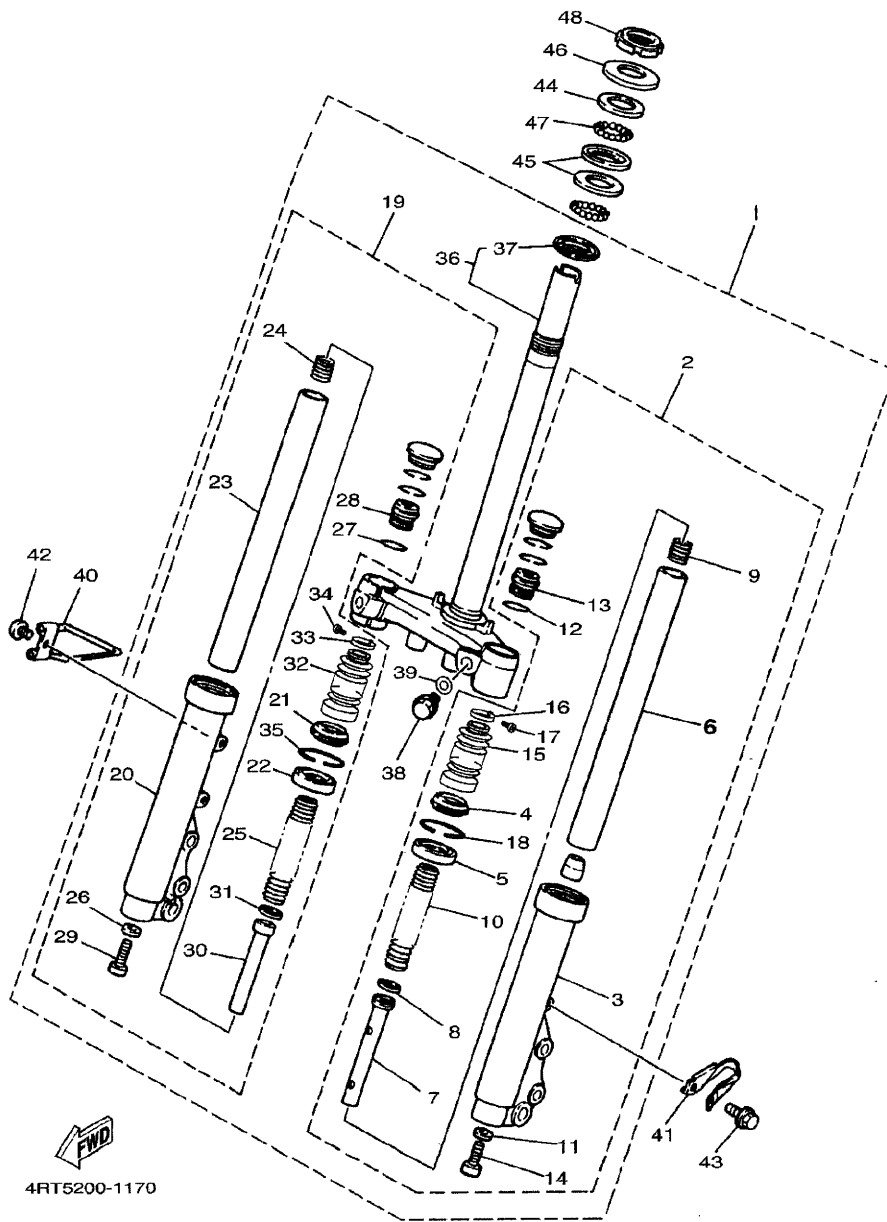
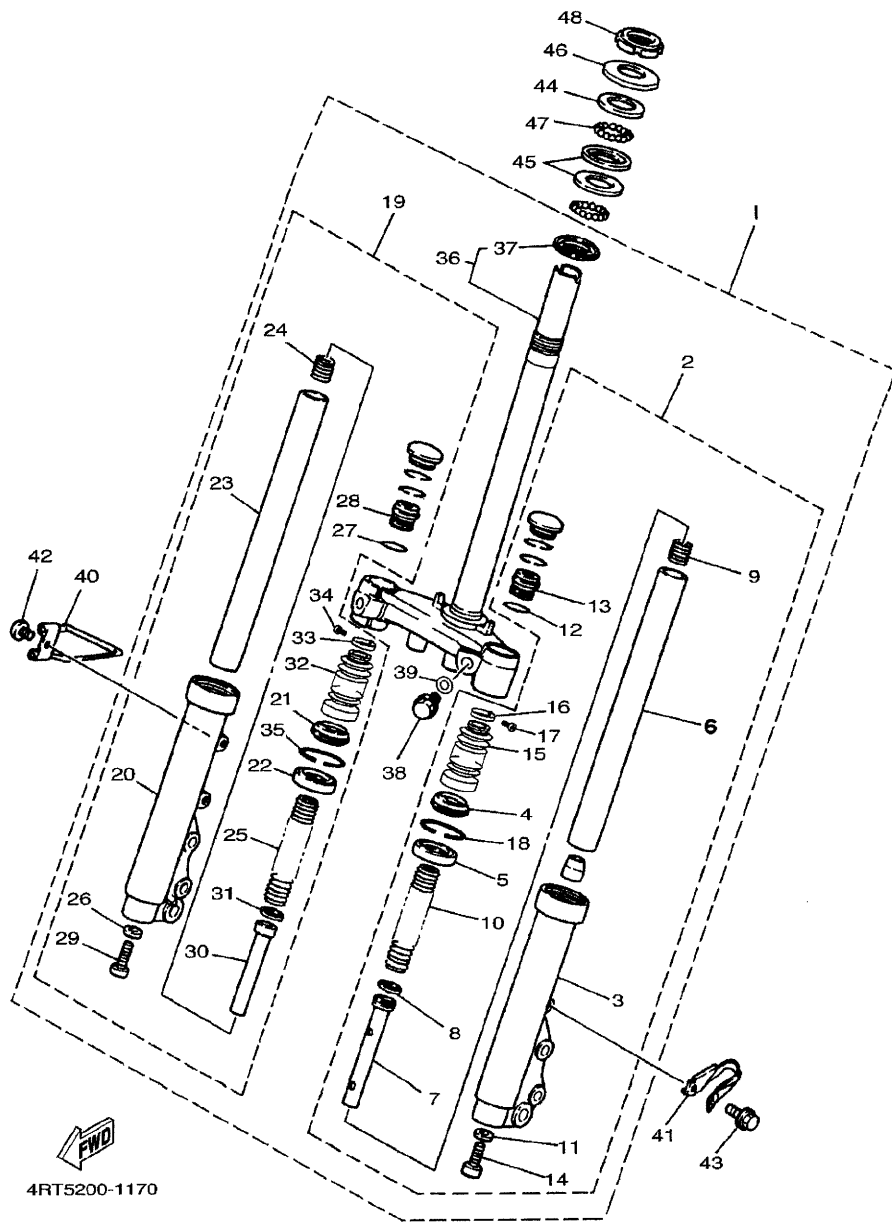


FIG. 17 FRONT FORK

HORQUILLA DELANTERA

REF. NO.	PART NO. CODIGO NO.	DESCRIPTION DESCRIPTION	4RT6			REMARKS OBSERVACION
1	4RT-F3100-10	FRONT FORK ASSY	1			
2	4RT-F3102-10	.FRONT FORK ASSY (L.H)	1			
3	4RT-F3106-10	.OUTER TUBE COMP. (L.H)	1			
4	4RT-F3144-10	..GASKET	1			
5	4RT-F3145-01	..OIL SEAL	1			
6	4RT-F3110-00	..INNER TUBE COMP.1	1			
7	4RT-F3170-00	..CYLINDER COMP., FRONT FORK	1			
8	4RT-F3157-00	..RING, PISTON	1			
9	4RT-F3152-00	..SPRING, SUB	1			
10	4RT-F3141-00	..SPRING, FRONT FORK	1			
11	4RT-F3158-00	..GASKET	1			
12	4RT-F3114-00	..GASKET	1			
13	4RT-F3111-00	..BOLT, CAP	1			
14	4RT-F3181-00	..BOLT, HEXAGON SOCKET HEAD	1			
15	4RT-F3191-10	.BOOT	1			
16	4RT-F3192-00	.BAND	1			
17	98502-04016	.SCREW, PAN HEAD	1			
18	4RT-F3153-00	.RING, SNAP	1			
19	4RT-F3103-10	.FRONT FORK ASSY (R.H)	1			
20	4RT-F3107-10	.OUTER TUBE COMP. (R.H)	1			
21	4RT-F3144-10	..GASKET	1			
22	4RT-F3145-01	..OIL SEAL	1			
23	4RT-F3110-00	.INNER TUBE COMP.1	1			
24	4RT-F3152-00	.SPRING, SUB	1			
25	4RT-F3141-00	.SPRING, FRONT FORK	1			
26	4RT-F3158-00	..GASKET	1			
27	4RT-F3114-00	.GASKET	1			

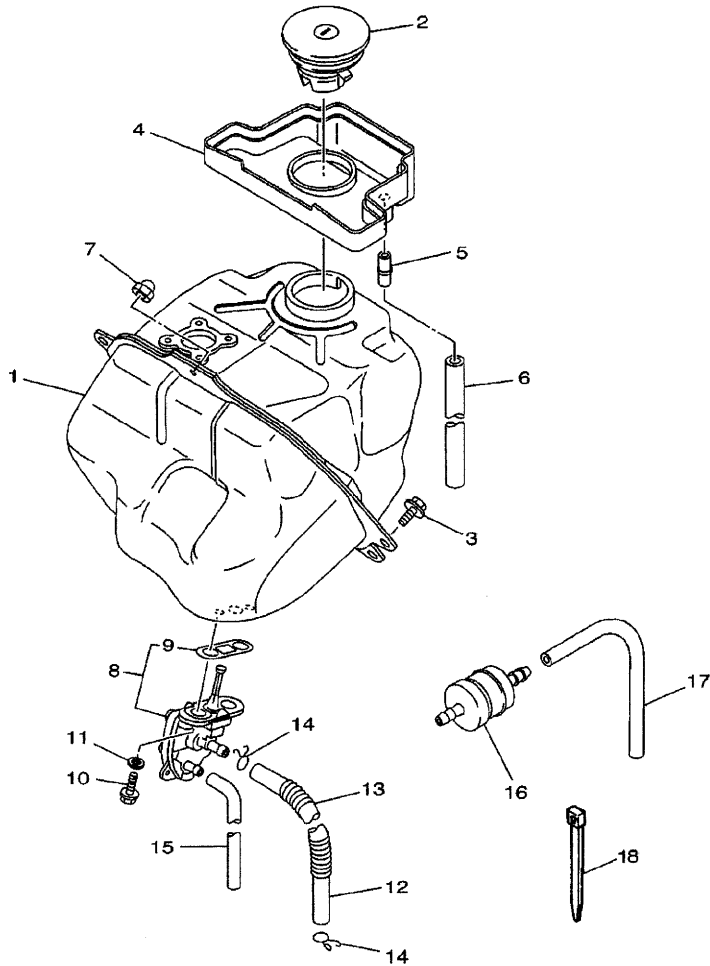


4RT5200-1170

FIG. 17 FRONT FORK

HORQUILLA DELANTERA

REF. NO.	PART NO. CODIGO NO.	DESCRIPTION DESCRIPTION	4RT6		REMARKS OBSERVACION
28	4RT-F3111-00	.BOLT, CAP	1		
29	4RT-F3181-00	.BOLT, HEXAGON SOCKET HEAD	1		
30	4RT-F3170-00	.CYLINDER COMP., FRONT FORK	1		
31	4RT-F3157-00	.RING, PISTON	1		
32	4RT-F3191-10	.BOOT	1		
33	4RT-F3192-00	.BAND	1		
34	98502-04016	.SCREW, PAN HEAD	1		
35	4RT-F3153-00	.RING, SNAP	1		
36	4RT-F3340-00	.UNDER BRACKET COMP.	1		
37	4RT-F3414-00	.RACE, BALL 4	1		
38	4RT-F3346-00	.BOLT 1	2		
39	92902-12100	.WASHER, SPRING	2		
40	4RT-F3317-00	HOLDER, CABLE	1		
41	4RT-F5875-00	HOLDER, BRAKE HOSE 1	1		
42	9890N-06010	SCREW, BIND	1		
43	9580N-06016	BOLT, FLANGE	1		
44	4RT-F3411-00	RACE, BALL 1	1		
45	4RT-F3412-00	RACE, BALL 2	2		
46	4RT-F3416-00	COVER, BALL RACE 2	1		
47	93503-16824	BALL	44		
48	90179-25864	NUT	2		



4RT5200-1180

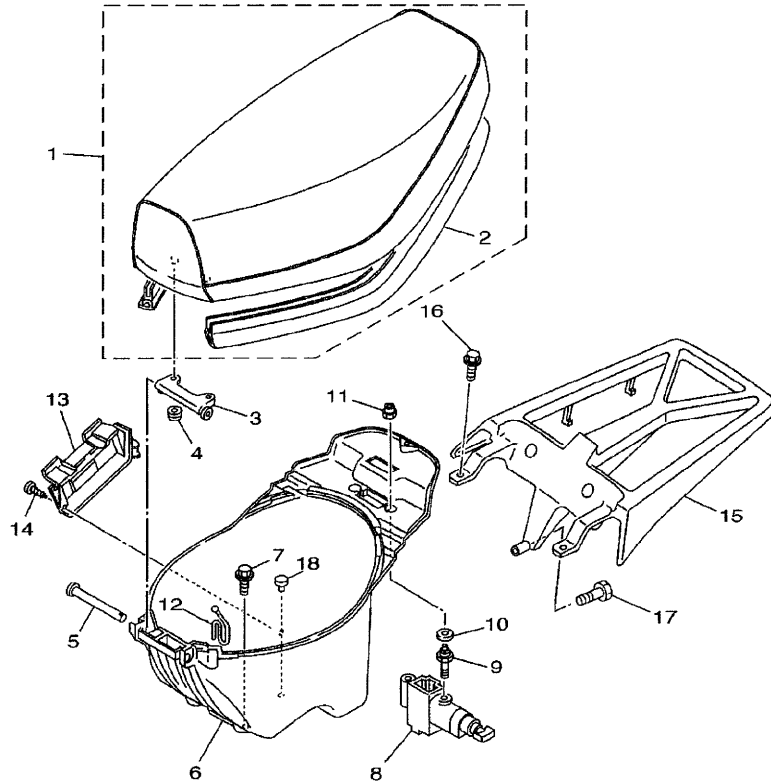
FIG. 18 FUEL TANK

DEPOSITO DE COMBUSTIBLE

REF. NO.	PART NO. CODIGO NO.	DESCRIPTION DESCRIPTION	4RT6			REMARKS OBSERVACION
1	4RT-F4110-00	FUEL TANK COMP.	1			
2	4RT-F4610-00	CAP ASSY	1			
3	9582N-06012	BOLT, FLANGE	2			
4	4RT-F414A-00	COVER, FILLER	1			
5	4RT-F1753-00	BOSS, CONNECTOR	1			
6	91A20-07045	TUBE, FLEXIBLE VINYL	1			
7	9570N-06500	NUT, FLANGE	1			
8	4RT-F4500-00	FUEL COCK ASSY 1	1			
9	4RT-F4512-00	.GASKET	1			
10	90149-06801	SCREW	2			
11	90202-06800	WASHER, PLATE	2			
12	4RT-F4311-01	PIPE, FUEL 1	1			
13	90501-08863	SPRING, COMPRESSION	1			
14	90467-09006	CLIP	2			
15	90445-07899	HOSE	1			
16	4KL-F4167-00	STRAINER	1			
17	4RT-F4312-00	PIPE 2	1			
18	90465-13152	CLAMP	1			

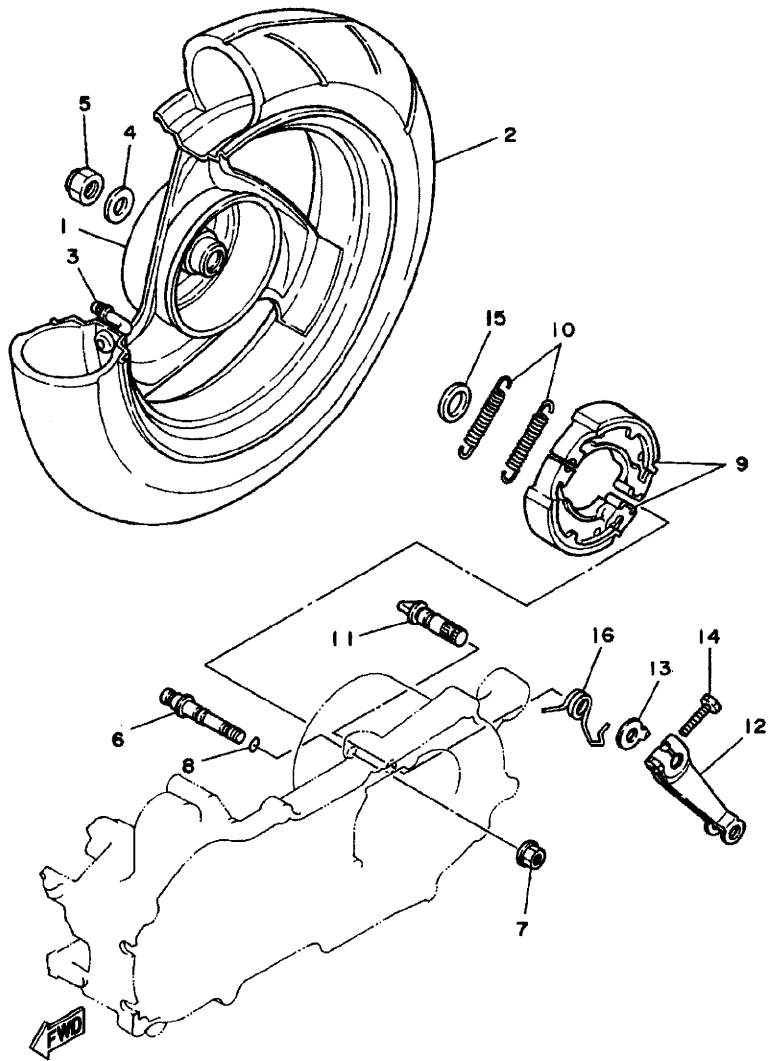
FIG. 19 SEAT. CARRIER

ASIENTO. PORTAEQUIPAJE



REF. NO.	PART NO. CODIGO NO.	DESCRIPTION DESCRIPTION	4RT6				REMARKS OBSERVACION
1	4RT-F4730-01	DOUBLE SEAT ASSY	1				
2	4RT-F475X-00	.COVER,2	1				
3	4RT-F4726-00	HINGE, SEAT	1				
4	9570N-06500	NUT, FLANGE	2				
5	90241-10015	PIN	1				
6	4RT-F473R-00	BOX 1	1				
7	90109-063F1	BOLT	2				
8	4RT-F4780-00	SEAT LOCK ASSY	1				
9	4RT-F4717-00	BOLT, SEAT FITTING	2				
10	90201-08110	WASHER, PLATE	2				
11	90179-06858	NUT	2				
12	4RT-F1398-00	HANGER, HELMET	1				
13	4RT-H2129-00	COVER, BATTERY	1				
14	97707-50012	SCREW, TAPPING	1				
15	4RT-F4842-10	CARRIER, REAR	1				
16	90149-06829	SCREW	2				
17	9580N-08014	BOLT, FLANGE	1				
18	4RT-F117T-00	COVER 5	1				

FWD
4RT5200-1190

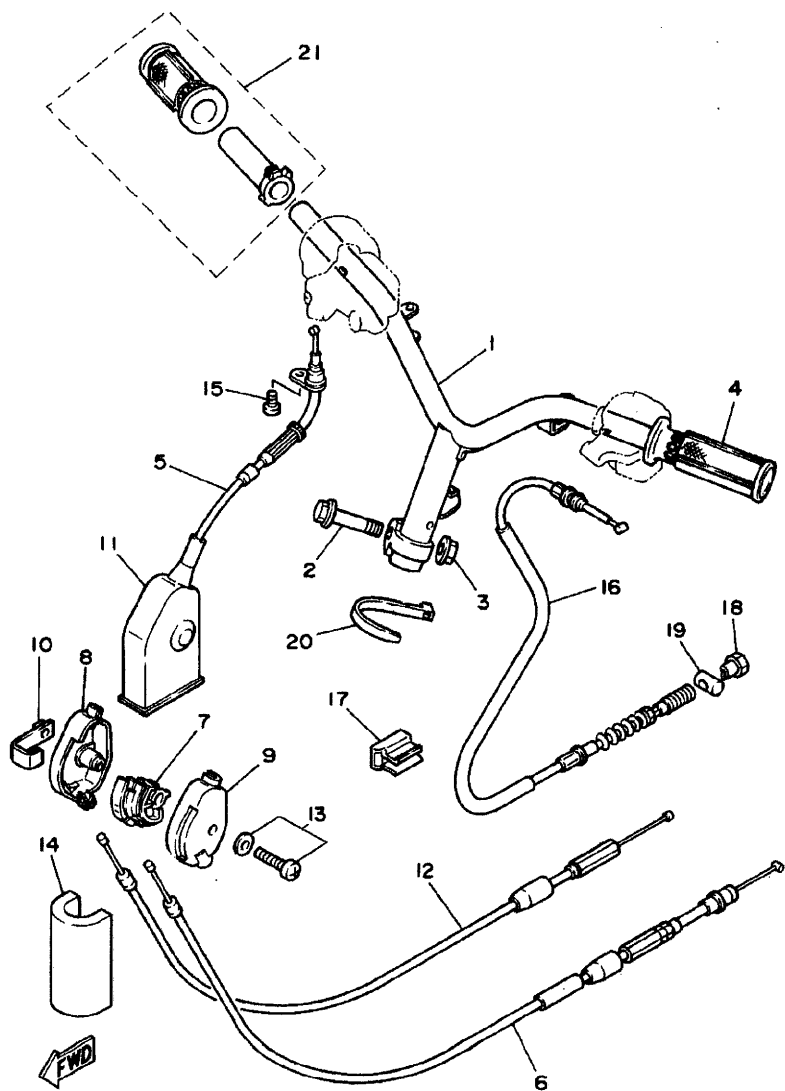


4RT5200-1220

FIG. 22 REAR WHEEL

RUEDA TRASERA

REF. NO.	PART NO. CODIGO NO.	DESCRIPTION DESCRIPTION	4RT6		REMARKS OBSERVACION
1	4RT-F5338-00-8L	.CAST WHEEL, REAR	1		NG
2	94109-108N7	.TIRE	1		
3	93900-00808	.VALVE, RIM	1		
4	90201-148G5	WASHER, PLATE	1		
5	90185-14831	NUT, SELF-LOCKING	1		
6	4RT-F5326-00	PIN, PIVOT	1		
7	9570N-08500	NUT, FLANGE	1		
8	93210-07435	O-RING	1		
9	4RT-F5330-00	BRAKE SHOE COMP.	2		
10	90506-15848	SPRING, TENSION	2		
11	4RT-F5351-00	CAMSHAFT	1		
12	4RT-F5355-00	LEVER, CAMSHAFT	1		
13	4RT-F513A-00	PLATE, INDICATOR	1		
14	90101-06878	BOLT	1		
15	90201-208G4	WASHER, PLATE	1		
16	4RT-F5357-00	SPRING, LEVER RETURN	1		

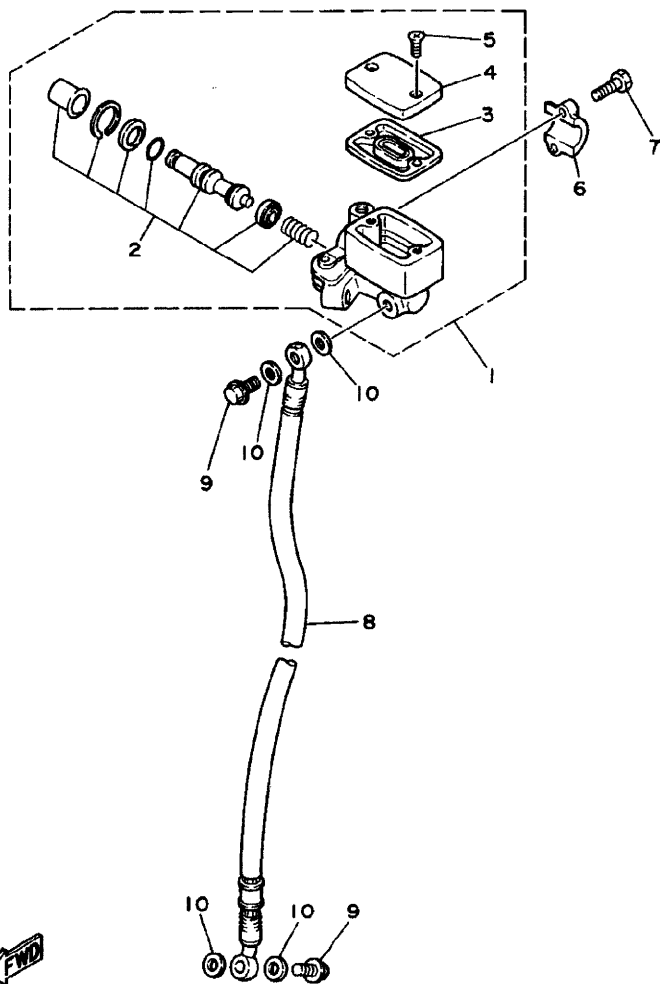


4RT5200-1230

FIG. 23 STEERING HANDLE. CABLE MANUBRIO. CABLE

REF. NO.	PART NO. CODIGO NO.	DESCRIPTION DESCRIPTION	4RT6	REMARKS OBSERVACION
1	4RT-F6110-00	HANDLE COMP.	1	
2	90105-10036	BOLT, WASHER BASED	1	
3	9560N-10200	NUT, SELF-LOCKING	1	
4	4RT-F6241-00	GRIP	1	
5	4RT-F6311-00	CABLE, THROTTLE 1	1	
6	4RT-F6321-00	CABLE, PUMP	1	
7	4RT-F6263-00	PIECE, CONNECTING	1	
8	4RT-F6261-00	CONNECTOR, CABLE	1	
9	4RT-F6262-00	CAP, CABLE CONNECTOR	1	
10	4RT-F6398-00	WASHER	1	
11	4RT-F6316-00	BOOT, THROTTLE CABLE	1	
12	4RT-F6312-00	CABLE, THROTTLE 2	1	
13	9760N-05225	SCREW, PAN HEAD WITH WASHER	1	
14	4RT-F6387-00	PROOF, WATER	1	
15	9850N-05010	SCREW, PAN HEAD	1	
16	4RT-F6351-00	CABLE, BRAKE	1	
17	4RT-F6393-00	HOLDER	1	
18	90179-06411	NUT	1	
19	90249-12808	PIN	1	
20	90464-20818	CLAMP	1	
21	4RT-F6240-00	GRIP ASSY	1	

FIG. 24 FRONT MASTER CYLINDER CILINDRO MAESTRO DELANTERO

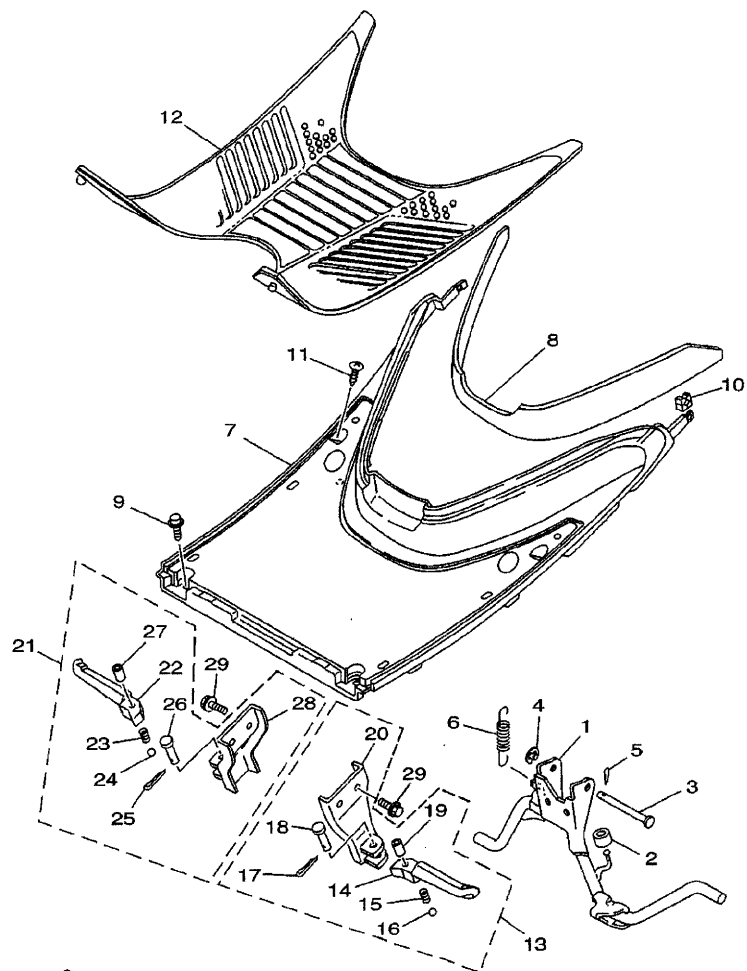


REF. NO.	PART NO. CODIGO NO.	DESCRIPTION DESCRIPTION	4RT6			REMARKS OBSERVACION
1	4RT-F583T-01	MASTER CYLINDER ASSY	1			
2	3RW-W0041-02	.CYLINDER KIT, MASTER	1			
3	4RT-F5854-00	.DIAPHRAGM, RESERVOIR	1			
4	4RT-F5852-00	.CAP, RESERVOIR	1			
5	98706-04012	.SCREW, FLAT HEAD	2			
6	4RT-F5867-00	BRACKET, MASTER CYLINDER	1			
7	9131N-06025	BOLT	2			
8	4RT-F5872-00	HOSE, BRAKE 1	1			
9	90401-10811	BOLT, UNION	2			
10	90201-108J9	WASHER, PLATE	4			

4RT5200-1240

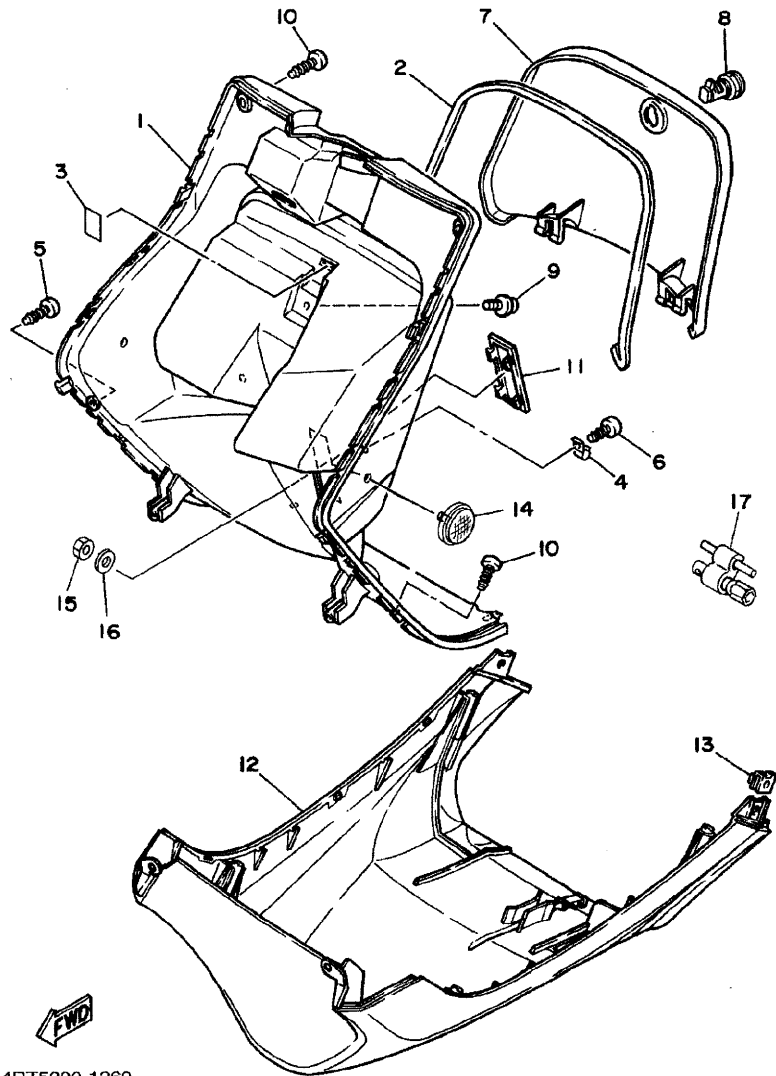
FIG. 25 STAND. FOOTREST

SOPORTE. APOYAPIE



REF. NO.	PART NO. CODIGO NO.	DESCRIPTION DESCRIPTION	4RT6		REMARKS OBSERVACION
1	4RT-F7111-00	STAND, MAIN	1		
2	90387-065X4	COLLAR	1		
3	90240-10137	PIN, CLEVIS	1		
4	90202-10120	WASHER, PLATE	1		
5	90468-12006	CLIP	1		
6	90506-32464	SPRING, TENSION	1		
7	4RT-F7481-00	BOARD, FOOTREST	1		
8	4RT-F7415-00	PLATE, FOOTREST	1		
9	90119-06060	BOLT, WITH WASHER	4		
10	90183-05807	NUT, SPRING	2		
11	97707-50016	SCREW, TAPPING	2		
12	4RT-F7483-00	MAT 1	1		
13	4RT-F7430-00	REAR FOOTREST ASSY 1	1		
14	4RT-F7431-00	FOOTREST, REAR 1	1		
15	90501-12743	SPRING, COMPRESSION	1		
16	93501-04805	BALL	1		
17	91401-20012	PIN, COTTER	1		
18	91701-06032	PIN, CLEVIS	1		
19	90387-064H8	COLLAR	1		
20	4RT-F7412-00	BRACKET, FOOTREST 1	1		
21	4RT-F7440-00	REAR FOOTREST ASSY 2	1		
22	4RT-F7441-00	FOOTREST, REAR 2	1		
23	90501-12743	SPRING, COMPRESSION	1		
24	93501-04805	BALL	1		
25	91401-20012	PIN, COTTER	1		
26	91701-06032	PIN, CLEVIS	1		
27	90387-064H8	COLLAR	1		

FWD
4RT5200-1250



4RT5200-1260

FIG. 26 LEG SHIELD

PATA PROTEGIDA

REF. NO.	PART NO. CODIGO NO.	DESCRIPTION DESCRIPTION	4RT6			REMARKS OBSERVACION
1	4RT-F8311-00	LEG SHIELD 1	1			
2	4RT-F8371-00	DAMPER	1			
3	4RT-F834V-00	PROTECTOR 1	1			
4	4RT-F1796-00	HINGE	2			
5	97707-50016	SCREW, TAPPING	1			
6	9770N-40512	SCREW, TAPPING	2			
7	4RT-F8313-00	LID	1			
8	4RT-F1780-00	LOCK ASSY	1			
9	90159-06182	SCREW, WITH WASHER	1			
10	97707-50016	SCREW, TAPPING	1			
11	4RT-F8349-00	CAP	1			
12	4RT-F8385-20	COVER, LOWER	1			
13	90183-05807	NUT, SPRING	2			
14	4RT-H5131-00	REFLECTOR, REAR 1	2			
15	90179-05880	NUT	2			
16	90201-06050	WASHER, PLATE	2			
17	4RT-F8100-00	TOOL KIT	1			

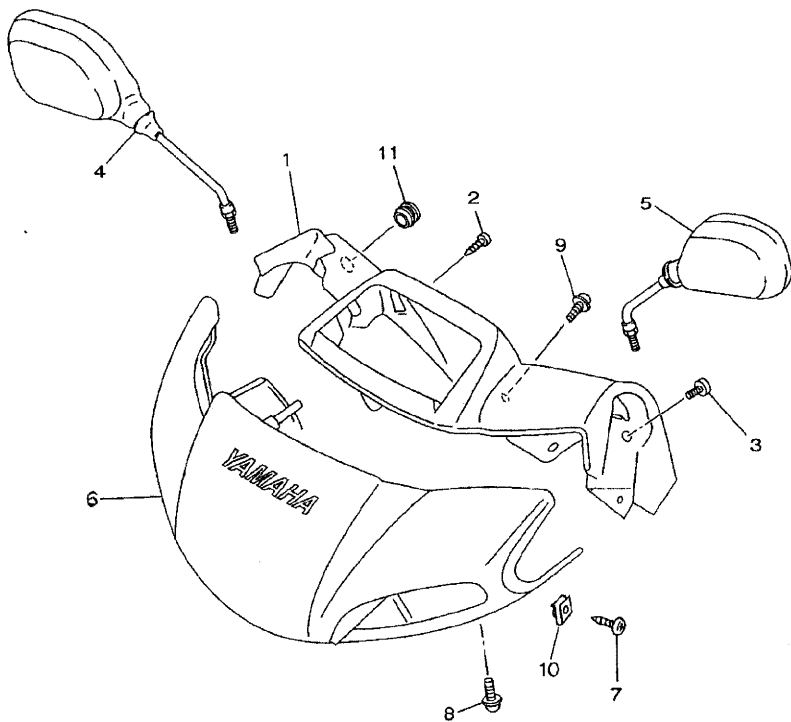


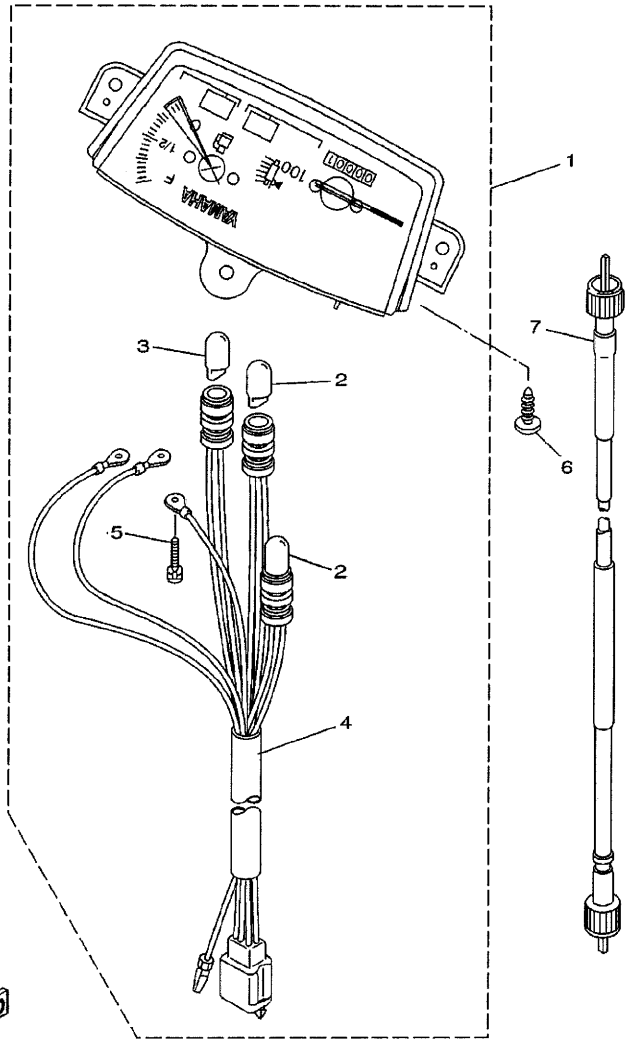
FIG. 27 COWLING 1

BOVEDA 1

REF. NO.	PART NO. CODIGO NO.	DESCRIPTION DESCRIPTION	4RT6	REMARKS OBSERVACION
1	4RT-F6145-00	COVER, HANDLEBAR UPPER 2	1	
2	97707-50016	SCREW, TAPPING	2	
3	97780-50016	SCREW, TAPPING	2	
4	4RT-F6290-00	REAR VIEW MIRROR ASSY (RIGHT)	1	
5	4RT-F6280-00	REAR VIEW MIRROR ASSY (LEFT)	1	
6	4RT-W2614-01-P1	COVER, HANDLEBAR UPPER 1	1	UR
	4RT-W2614-01-P9	COVER, HANDLEBAR UPPER 1	1	UR DRC2
7	97780-50012	SCREW, TAPPING	2	
8	90159-05839	SCREW, WITH WASHER	2	
9	90159-05831	SCREW, WITH WASHER	1	
10	90183-05807	NUT, SPRING	2	
11	4RT-F6199-00	PLUG, BLIND	1	



4RT5200-1270

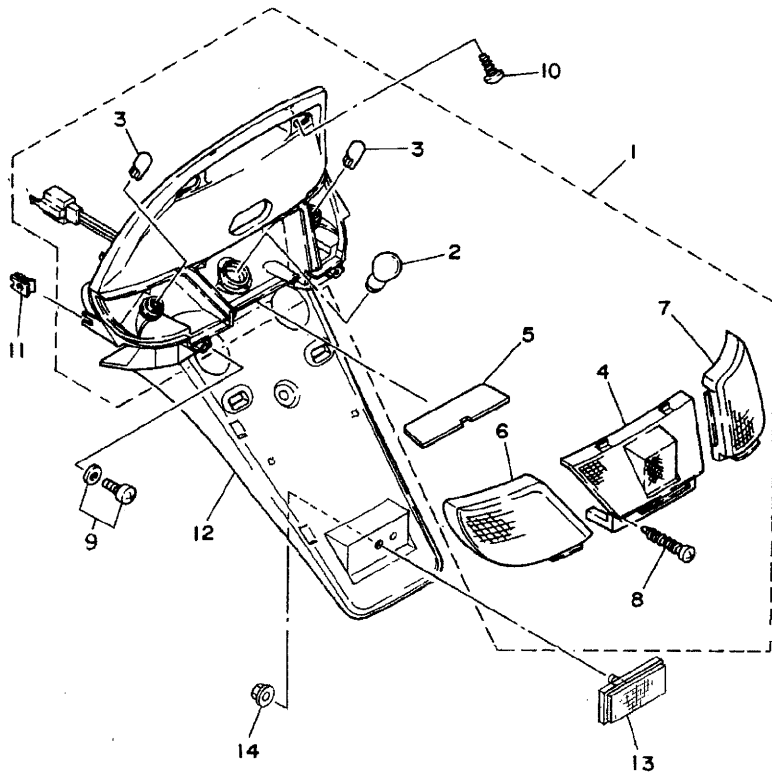


4RT5200-1290

FIG. 29 METER

MEDIDOR

REF. NO.	PART NO. CODIGO NO.	DESCRIPTION DESCRIPTION	4RT6	REMARKS OBSERVACION
1	4RT-H3510-01	SPEEDOMETER ASSY	1	
2	4FP-H3517-10	.BULB	2	
3	4FP-H3517-00	.BULB	1	
4	4RT-H3509-00	.SOCKET CORD ASSY	1	
5	90159-03102	.SCREW, WITH WASHER	3	
6	97707-50016	SCREW, TAPPING	3	
7	4RT-H3550-00	SPEEDOMETER CABLE ASSY	1	



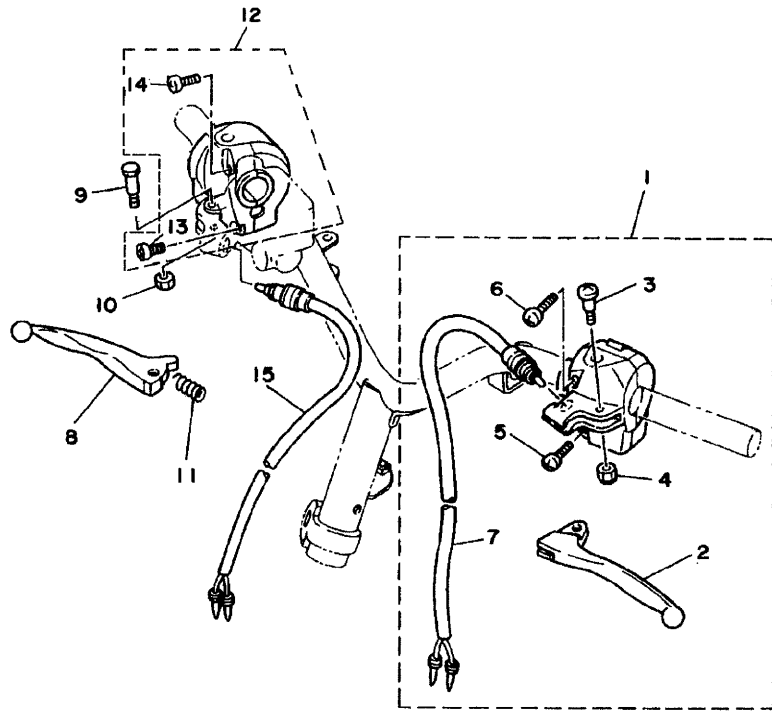
4RT5200-1310

FIG. 31 TAILLIGHT

LUZ DE COLA

REF. NO.	PART NO. CODIGO NO.	DESCRIPTION DESCRIPTION	4RT6	REMARKS OBSERVACION
1	4RT-H4700-00	TAILLIGHT ASSY	1	
2	4RT-H4714-00	.BULB	1	
3	4RT-H3311-00	.BULB (12V-10W)	2	
4	4RT-H4721-00	.LENS, TAILLIGHT	1	
5	4RT-H4743-00	.LENS, LICENCE LIGHT	1	
6	4RT-H3332-00	.LENS, FLASHER	1	
7	4RT-H3342-00	.LENS, FLASHER 2	1	
8	9770N-40620	.SCREW, TAPPING	2	
9	90119-06810	BOLT, WITH WASHER	2	
10	97707-50016	SCREW, TAPPING	2	
11	90183-05807	NUT, SPRING	2	
12	4RT-H4751-00	BRACKET, LICENSE	1	
13	4FP-H5130-00	REAR REFLECTOR ASSY	1	
14	9560N-05200	NUT, FLANGE	1	

FIG. 32 HANDLE SWITCH. LEVER INTERRUPTOR DE MANIJA. PALANCA



REF. NO.	PART NO. CODIGO NO.	DESCRIPTION DESCRIPTION	4RT6	REMARKS OBSERVACION
1	4RT-H2910-01	LEVER HOLDER ASSY (LEFT)	1	
2	4RT-H3912-00	.LEVER 1	1	
3	90149-05274	.SCREW	1	
4	9570N-05300	.NUT, FLANGE	1	
5	9850N-05020	.SCREW, PAN HEAD	1	
6	9850N-05030	.SCREW, PAN HEAD	1	
7	4RT-H3980-10	FRONT STOP SWITCH ASSY	1	
8	4RT-H3922-00	LEVER 2	1	
9	90109-06858	BOLT	1	
10	9560N-06100	NUT	1	
11	90501-10848	SPRING, COMPRESSION	1	
12	4RT-H3975-01	SWITCH, HANDLE 2	1	
13	9850N-05020	.SCREW, PAN HEAD	1	
14	9850N-05030	.SCREW, PAN HEAD	1	
15	4RT-H3980-10	FRONT STOP SWITCH ASSY	1	


4RT5200-1320

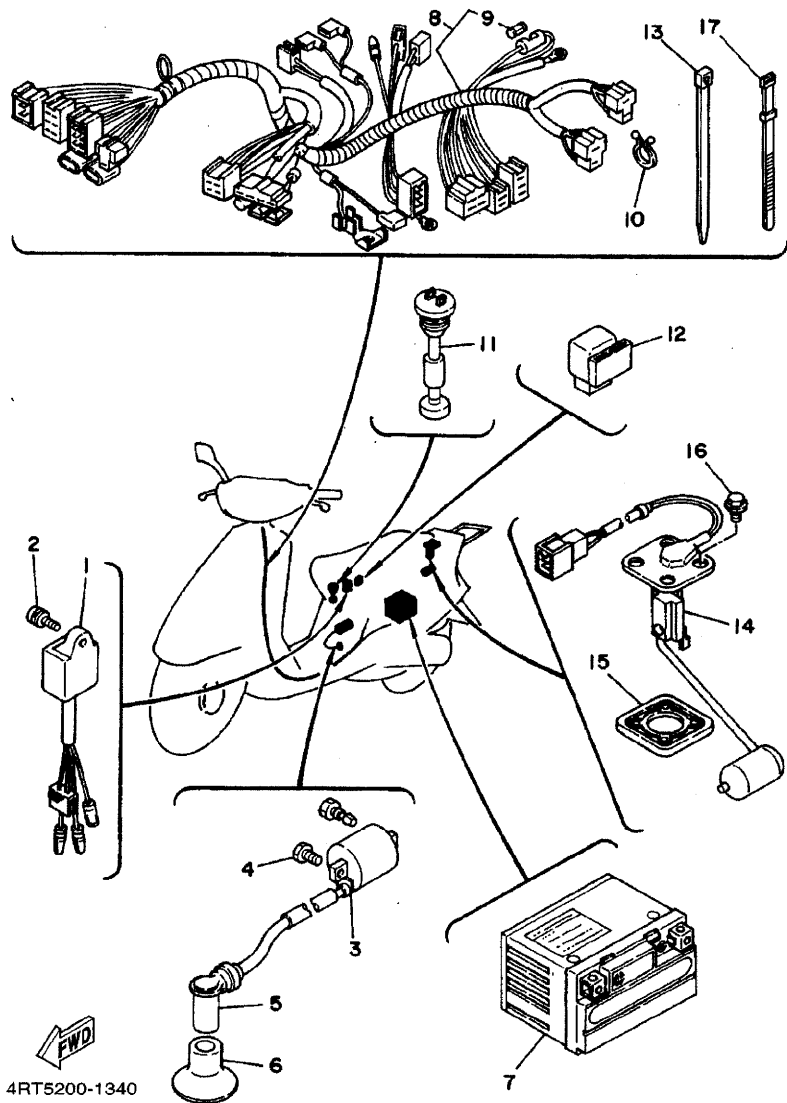


FIG. 34 ELECTRICAL 2

EQUIPO ELECTRICO 2

REF. NO.	PART NO. CODIGO NO.	DESCRIPTION DESCRIPTION	4RT6	REMARKS OBSERVACION
1	4RT-H5540-00	C.D.I. UNIT ASSY	1	
2	9760N-05216	SCREW, PAN HEAD WITH WASHER	1	
3	4FP-H2310-00	IGNITION COIL ASSY	1	
4	9700N-06016	BOLT	2	
5	4RT-H2370-00	PLUG CAP ASSY	1	
6	4RT-H2372-00	SEAL, PLUG CAP	1	
7	4RT-H2100-00	BATTERY ASSY	1	
8	4RT-H2590-10	WIRE HARNESS ASSY	1	
9	4RT-H2151-00	FUSE	1	
10	90464-20818	CLAMP	1	
11	4RT-H5720-00	OIL LEVEL GAUGE ASSY	1	
12	4RT-H1940-00	STARTER RELAY ASSY	1	
13	90465-18147	CLAMP	1	
14	4RT-H5752-00	SENDER UNIT ASSY, FUEL METER	1	
15	4FP-H5753-00	GASKET, SENDER UNIT	1	
16	90119-05071	BOLT, WITH WASHER	4	
17	4RT-H3936-00	BAND, SWITCH CORD	3	

NUMERICAL INDEX
INDICE NUMERICO

PART NO. CODIGO NO.	REF. NO.	PART NO. CODIGO NO.	REF. NO.	PART NO. CODIGO NO.	REF. NO.	PART NO. CODIGO NO.	REF. NO.	PART NO. CODIGO NO.	REF. NO.	PART NO. CODIGO NO.	REF. NO.
4RT-E1111-00	1 - 1	4RT-E5461-00	8 - 13	4RT-F3106-10	17 - 3	4RT-F4730-01	19 - 1	4RT-F7481-00	25 - 7	4RT-H4312-00	13 - 11
4RT-E1181-00	1 - 2	4RT-E5462-00	8 - 31	4RT-F3107-10	17 - 20	4RT-F475X-00	19 - 2	4RT-F7483-00	25 - 12	4RT-H4314-00	13 - 10
4RT-E1351-00	1 - 5	4DM-E5570-00	9 - 5	4RT-F3110-00	17 - 6	4RT-F4780-00	19 - 8	4RT-F8100-00	26 - 17	4RT-H4320-00	13 - 12
4RT-E1412-00	2 - 2	4RT-E5601-00	9 - 12		17 - 23	4RT-F4842-10	19 - 15	4RT-F8311-00	26 - 1	4RT-H4700-00	31 - 1
4RT-E1422-00	2 - 6	4RT-E5620-00	9 - 17	4RT-F3111-00	17 - 13	4RT-F5115-00	20 - 5	4RT-F8313-00	26 - 7	4RT-H4714-00	31 - 2
4RT-E1631-01	2 - 13	4RT-E5630-10	9 - 19		17 - 28	4RT-F513A-00	22 - 13	4RT-F834V-00	26 - 3	4RT-H4721-00	31 - 4
4RT-E1633-00	2 - 14	4RT-E5657-00	10 - 23	4RT-F3114-00	17 - 12	4RT-F5168-00-8L	20 - 1	4RT-F8349-00	26 - 11	4RT-H4743-00	31 - 5
4RT-E2611-00	3 - 9	4RT-E5659-00	8 - 19		17 - 27	4RT-F5181-00	20 - 9	4RT-F8371-00	26 - 2	4RT-H4751-00	31 - 12
4RT-E2631-00	3 - 11	4RT-E5673-00	9 - 20	4RT-F3141-00	17 - 10	4RT-F5190-00	20 - 11	4RT-F8385-20	26 - 12	4FP-H5130-00	31 - 13
4RT-E2651-00	3 - 1	4RT-E6111-00	10 - 1		17 - 25	4RT-F5326-00	22 - 6	4RT-H131X-00	28 - 10	4RT-H5131-00	26 - 14
4RT-E2653-00	3 - 3	4RT-E6611-00	10 - 10	4RT-F3144-10	17 - 4	4RT-F5330-00	22 - 9	4RT-H1403-00	28 - 3	4RT-H5370-00	33 - 10
4RT-E2658-00	3 - 8	4RT-E6620-00	10 - 7		17 - 21	4RT-F5338-00-8L	22 - 1	4RT-H1800-00	9 - 21	4RT-H5500-10	28 - 1
4RT-E2659-00	3 - 12	4RT-E7410-00	11 - 1	4RT-F3145-01	17 - 5	4RT-F5351-00	22 - 11	4RT-H1801-00	9 - 23	4RT-H5540-00	34 - 1
4RT-E3178-00	4 - 13	4RT-E7420-00	11 - 5		17 - 22	4RT-F5355-00	22 - 12	4RT-H1940-00	34 - 12	4RT-H5550-00	28 - 11
4RT-E3342-00	9 - 7	4RT-E7620-00	10 - 14	4RT-F3152-00	17 - 9	4RT-F5357-00	22 - 16	4GU-H1960-00	33 - 1	4RT-H5560-10	28 - 2
4RT-E3621-00	5 - 5	4RT-E7641-00	10 - 20		17 - 24	4RT-F582T-00	21 - 1	4RT-H2100-00	34 - 7	4RT-H5561-00	28 - 9
4RT-E4301-10	6 - 1	4RT-E7660-00	10 - 26	4RT-F3153-00	17 - 18	4RT-F583T-01	24 - 1	4RT-H2129-00	19 - 13	4RT-H5580-00	28 - 4
4RT-E4410-01	5 - 10	4RT-E7664-00	10 - 30		17 - 35	4RT-F5852-00	24 - 4	4RT-H2151-00	34 - 9	4RT-H5720-00	34 - 11
4RT-E4411-00	5 - 11	4RT-E7670-00	10 - 27	4RT-F3157-00	17 - 8	4RT-F5854-00	24 - 3	4FP-H2310-00	34 - 3	4RT-H5752-00	34 - 14
4RT-E4412-00	5 - 12	4RT-E7684-00	10 - 32		17 - 31	4RT-F5867-00	24 - 6	4RT-H2370-00	34 - 5	4FP-H5753-00	34 - 15
4RT-E4437-01	5 - 13	4RT-F1110-10	12 - 1	4RT-F3158-00	17 - 11	4RT-F5872-00	24 - 8	4RT-H2372-00	34 - 6	3RW-W0041-02	24 - 2
4RT-E4445-00	7 - 2	4RT-F117T-00	19 - 18		17 - 26	4RT-F5875-00	17 - 41	4RT-H2501-01	33 - 3	2NA-W0045-01	21 - 4
4RT-E4451-00	5 - 14	4RT-F1232-00	12 - 10	4RT-F3170-00	17 - 7	4RT-F6110-00	23 - 1	4RT-H2552-00	33 - 4	2NA-W0047-00	21 - 6
4RT-E4452-00	5 - 15	4RT-F139X-00	12 - 7		17 - 30	4RT-F6145-00	27 - 1	4RT-H2590-10	34 - 8	51L-W0048-00	21 - 7
4RT-E4453-00	5 - 16	4RT-F1398-00	19 - 12	4RT-F3181-00	17 - 14	4RT-F6199-00	27 - 11	4RT-H2910-01	32 - 1	2NA-W0057-00	21 - 5
4RT-E4610-00	7 - 1	4RT-F1410-00	12 - 6		17 - 29	4RT-F6240-00	23 - 21	4RT-H331E-00	30 - 3	4RT-W2151-01-P9	13 - 1
4RT-E4613-00	7 - 4	4RT-F1481-00	12 - 2	4RT-F3191-10	17 - 15	4RT-F6241-00	23 - 4	4RT-H3310-00	30 - 1	4RT-W2151-02-P1	13 - 1
4RT-E4718-00	7 - 8	4RT-F1482-00	12 - 4		17 - 32	4RT-F6261-00	23 - 8	4RT-H3311-00	30 - 4	4RT-W2171-02-P1	14 - 1
4RT-E4766-00	7 - 9	4RT-F1523-00	13 - 3	4RT-F3192-00	17 - 16	4RT-F6262-00	23 - 9		31 - 3	4RT-W2171-02-P9	14 - 1
4RT-E4766-10	7 - 14	4RT-F1552-00	13 - 5		17 - 33	4RT-F6263-00	23 - 7	4RT-H3312-00	30 - 6	4RT-W2172-02-P1	14 - 17
4RT-E4779-00	7 - 3	4RT-F1553-00	13 - 7	4RT-F3317-00	17 - 40	4RT-F6280-00	27 - 5	4RT-H3332-00	31 - 6	4RT-W2172-02-P9	14 - 17
4RT-E5111-00	8 - 1	4RT-F1642-00	12 - 9	4RT-F3340-00	17 - 36	4RT-F6290-00	27 - 4	4RT-H3342-00	31 - 7	4RT-W2614-01-P1	27 - 6
4RT-E5121-00	8 - 5	4RT-F171L-10	14 - 6	4RT-F3346-00	17 - 38	4RT-F6311-00	23 - 5	4RT-H3350-00	33 - 7	4RT-W2614-01-P9	27 - 6
4RT-E5128-00	8 - 29	4RT-F171M-10	14 - 7	4RT-F3411-00	17 - 44	4RT-F6312-00	23 - 12	4RT-H3371-00	33 - 8	4RT-Y1141-00	2 - 1
4RT-E5191-00	8 - 38	4RT-F171N-10	14 - 10	4RT-F3412-00	17 - 45	4RT-F6316-00	23 - 11	4RT-H3509-00	29 - 4	3WF-11311-02	1 - 4
4RT-E5316-00	8 - 34	4RT-F1751-00	15 - 1	4RT-F3414-00	17 - 37	4RT-F6321-00	23 - 6	4RT-H3510-01	29 - 1	4DM-11603-00	2 - 15
4RT-E5317-00	8 - 10	4RT-F1753-00	18 - 5	4RT-F3416-00	17 - 46	4RT-F6351-00	23 - 16	4FP-H3517-00	29 - 3	3R1-11651-01	2 - 5
4RT-E5328-00	8 - 35	4RT-F177M-00	14 - 15	4RT-F4110-00	18 - 1	4RT-F6387-00	23 - 14	4FP-H3517-10	29 - 2	2GM-11681-01	2 - 3
4RT-E5335-00	8 - 36	4RT-F177N-00	14 - 16	4RT-F414A-00	18 - 4	4RT-F6393-00	23 - 17	4RT-H3550-00	29 - 7	3VR-13100-02	4 - 1
4RT-E5337-00	8 - 37	4RT-F1771-00	15 - 2	4KL-F4167-00	18 - 16	4RT-F6398-00	23 - 10	4RT-H3912-00	32 - 2	3AA-13124-00	4 - 5
4RT-E5363-00	8 - 25	4RT-F1778-00	14 - 13	4RT-F4311-01	18 - 12	4RT-F7111-00	25 - 1	4RT-H3922-00	32 - 8	3WF-13185-00	4 - 2
4RT-E5371-00	8 - 4	4RT-F1779-00	14 - 14	4RT-F4312-00	18 - 17	4RT-F7412-00	25 - 20	4RT-H3936-00	33 - 6	1YU-13187-00	4 - 3
4RT-E5404-00	8 - 40	4RT-F1780-00	26 - 8	4RT-F4500-00	18 - 8	4RT-F7415-00	25 - 8		34 - 17	1YU-13473-00	4 - 4
4RT-E5407-00	8 - 39	4RT-F1796-00	26 - 4	4RT-F4512-00	18 - 9	4RT-F7422-00	25 - 28	4RT-H3975-01	32 - 12	1YU-13516-00	4 - 6
4RT-E5411-00	8 - 18	4RT-F2210-00	16 - 1	4RT-F4610-00	18 - 2	4RT-F7430-00	25 - 13	4RT-H3980-10	32 - 7	3KJ-13555-00	5 - 6
4RT-E5421-00	8 - 12	4RT-F3100-10	17 - 1	4RT-F4717-00	19 - 9	4RT-F7431-00	25 - 14		32 - 15	1YU-13577-00	4 - 7
4RT-E5431-00	8 - 32	4RT-F3102-10	17 - 2	4RT-F4726-00	19 - 3	4RT-F7440-00	25 - 21	4RT-H4147-00	30 - 2	4JC-13610-00	5 - 1
4RT-E5451-00	8 - 14	4RT-F3103-10	17 - 19	4RT-F473R-00	19 - 6	4RT-F7441-00	25 - 22	4RT-H4310-00	13 - 9	3KJ-13613-00	5 - 2

NUMERICAL INDEX
INDICE NUMERICO

PART NO. CODIGO NO.	REF. NO.	PART NO. CODIGO NO.	REF. NO.	PART NO. CODIGO NO.	REF. NO.	PART NO. CODIGO NO.	REF. NO.	PART NO. CODIGO NO.	REF. NO.	PART NO. CODIGO NO.	REF. NO.
3KJ-13616-00	5 - 3	90119-06810	31 - 9	90380-15240	9 - 14	91401-20012	25 - 17	9560N-10200	12 - 5	97707-60540	3 - 7
4RT-1410A-00	6 - 16	90149-05274	32 - 3	90387-060G7	7 - 13		25 - 25		20 - 8	97780-50012	27 - 7
3YJ-14103-00	6 - 18	90149-06801	18 - 10	90387-062M9	13 - 16	91701-06032	25 - 18		23 - 3	97780-50016	27 - 3
4JP-14104-00	6 - 12	90149-06829	19 - 16	90387-064H8	25 - 19		25 - 26	9560N-12200	12 - 3	97801-05014	6 - 4
1HV-14147-00	6 - 17	90153-06008	9 - 18		25 - 27	92580-06016	6 - 13	9570N-05300	32 - 4	97880-06025	8 - 22
288-14161-00	6 - 25	90153-06061	7 - 5	90387-065X4	25 - 2	9290N-06200	7 - 10	9570N-06500	8 - 41	97901-04116	6 - 22
3WF-14312-30	6 - 5	90159-03102	29 - 5	90387-067V1	3 - 4	9290N-12600	28 - 12		18 - 7	9850L-06010	10 - 3
4JP-14331-00	6 - 3	90159-05831	27 - 9		5 - 20	92901-04100	6 - 23		19 - 4		33 - 5
4FW-14341-00	6 - 7	90159-05839	27 - 8	90387-108L9	20 - 4	92901-06100	6 - 14		33 - 9		33 - 11
14T-14343-44	6 - 9	90159-06182	26 - 9	90387-108M0	20 - 10	92902-12100	17 - 39	9570N-08500	22 - 7	9850L-06025	8 - 21
3KJ-14349-01	6 - 10	90163-05802	13 - 2	90387-165X0	10 - 18	93101-20839	2 - 11	9570N-10500	16 - 4	9850L-06035	8 - 9
3KJ-14353-20	6 - 11	90170-10219	10 - 25	90387-166L6	2 - 12	93102-17841	10 - 6	9580N-06012	13 - 6		8 - 23
14T-14384-00	6 - 8	90179-05880	26 - 15	90401-10811	24 - 9	93102-20878	2 - 10	9580N-06016	17 - 43	9850N-05010	23 - 15
1HV-14385-01	6 - 20	90179-06411	23 - 18	90430-08818	8 - 28	93102-25879	11 - 8	9580N-08014	19 - 17	9850N-05014	4 - 12
367-14386-00	6 - 21	90179-06858	19 - 11	90445-05431	4 - 10	93104-19097	28 - 5	9580N-08016	8 - 27	9850N-05020	32 - 5
2JA-14392-00	6 - 19	90179-07381	1 - 7	90445-07899	18 - 15	93106-20808	20 - 6	95817-08020	7 - 6		32 - 13
2JA-14397-00	6 - 26	90179-10609	10 - 11	90445-09005	4 - 8	93109-33819	10 - 28	95817-08030	7 - 7	9850N-05030	32 - 6
4JP-14561-00	6 - 2	90179-25864	17 - 48	90446-11347	8 - 7	93210-06852	10 - 13	9582N-06012	12 - 11		32 - 14
4RT-1490J-00	6 - 6	90179-28415	10 - 9	90450-32811	5 - 8	93210-07435	22 - 8		18 - 3	9850N-06012	8 - 30
3KJ-15481-00	8 - 33	90183-05807	13 - 13	90464-20818	23 - 20	93210-14104	8 - 26	9582N-08016	25 - 29		9 - 10
3VR-15524-00	9 - 1		14 - 4		34 - 10	93210-23614	9 - 22	9582N-08030	21 - 11	9850N-06016	28 - 14
3KJ-15532-00	9 - 9		14 - 11	90465-13152	18 - 18	93210-384A6	10 - 29	9700N-06016	34 - 4	9850N-06065	8 - 24
3WF-15538-00	9 - 3		25 - 10	90465-18147	34 - 13	93300-63813	10 - 12	9760N-05216	34 - 2	98501-03006	6 - 15
3WF-15650-00	9 - 6		26 - 13	90467-08003	4 - 9	93306-003X1	8 - 3	9760N-05225	23 - 13	98502-04016	17 - 17
17L-16626-00	10 - 8		27 - 10	90467-09006	18 - 14		8 - 6	9760N-06220	3 - 6		17 - 34
2XX-17611-00	10 - 21		31 - 11	90467-24140	5 - 9	93306-00325	10 - 5		5 - 18	98517-05010	28 - 7
3NW-17623-01	10 - 16	90185-14831	22 - 5	90468-02033	4 - 11	93306-004YK	11 - 7	9760N-06316	3 - 10	98517-05020	28 - 6
5G6-17632-00	10 - 15	90201-06050	26 - 16	90468-12006	16 - 5	93306-201Y6	11 - 2	97607-03106	5 - 4	98706-04012	24 - 5
1NT-17653-00	10 - 17	90201-06412	10 - 2		25 - 5	93306-20458	2 - 9	97607-04106	28 - 8	9890N-06010	17 - 42
164-22216-00	8 - 2	90201-08088	9 - 8	90480-10468	3 - 2	93306-30003	20 - 7	9770N-40512	26 - 6	98907-06016	7 - 11
2NA-2580T-00	21 - 3	90201-08110	19 - 10	90480-12237	7 - 12	93310-11268	2 - 17	9770N-40620	31 - 8	99009-15400	9 - 16
56A-25919-00	21 - 8	90201-108J9	24 - 10	90480-12497	3 - 5	93310-255B7	9 - 2	9770N-50125	5 - 17	99009-17400	8 - 11
56A-25919-10	21 - 9	90201-125L6	11 - 3		5 - 19	93310-41810	2 - 4	97707-50012	13 - 14		10 - 4
56A-25926-00	21 - 10	90201-148G5	22 - 4	90501-08863	18 - 13	93315-42536	11 - 6		14 - 3	99009-19400	4 - 15
3KJ-26329-00	6 - 24	90201-155G5	9 - 15	90501-10848	32 - 11	93450-13130	2 - 16		14 - 5	99009-42500	11 - 9
90101-06878	22 - 14	90201-163J6	10 - 19	90501-12743	25 - 15	93501-04805	25 - 16		14 - 12	99530-10114	8 - 15
90102-10031	16 - 3	90201-208G4	22 - 15		25 - 23		25 - 24		19 - 14		8 - 20
90105-06813	13 - 15	90201-551P8	9 - 4	90501-29517	12 - 8	93503-16824	17 - 47	97707-50016	13 - 4	99530-12016	8 - 8
90105-08121	16 - 2	90202-06800	18 - 11	90501-402G0	10 - 31	93603-12827	4 - 14		14 - 2		
90105-10036	23 - 2	90202-10120	25 - 4	90506-15848	22 - 10	93900-00808	20 - 3		14 - 8		
90109-063F1	19 - 7	90208-10012	10 - 24	90506-32464	25 - 6		22 - 3		14 - 9		
90109-06858	32 - 9	90208-12042	11 - 4	90508-32609	9 - 13	94109-108N6	20 - 2		25 - 11		
90110-10833	21 - 2	90209-18112	2 - 7	91A20-07045	18 - 6	94109-108N7	22 - 2		26 - 5		
90116-07550	1 - 6	90214-14054	10 - 22	9131N-06025	24 - 7	94701-00110	1 - 3		26 - 10		
90119-05071	34 - 16	90240-10137	25 - 3	91318-06020	5 - 7	9502N-06016	33 - 2		27 - 2		
90119-06018	13 - 8	90241-10015	19 - 5		8 - 17	95307-12600	28 - 13		29 - 6		
	15 - 3	90249-12808	23 - 19		9 - 11	9560N-05200	31 - 14		30 - 5		
90119-06060	25 - 9	90280-03017	2 - 8	91318-06035	8 - 16	9560N-06100	32 - 10		31 - 10		