

PARTS CATALOGUE

AL115C (28D7) INDONESIA

AL115C (28DD) INDONESIA

AL115S (28D8) INDONESIA

AL115C/AL115S
PARTS CATALOGUE
©2011 by Yamaha Motor Co., Ltd.
1st edition, June 2011
All rights reserved.
Any reprinting or unauthorized use
without the written permission of
Yamaha Motor Co., Ltd.
is expressly prohibited.
Printed in Japan.

FOREWORD

This Parts Catalogue is related to the parts for the model(s) on the cover page. When you are ordering replacement parts, please refer to this Parts Catalogue and quote both part numbers and part names correctly.

1. Modifications or additions which have been made after the issue of the Parts Catalogue will be announced in the Parts News.

It is advisable that you make the necessary corrections to the Parts Catalogue according to the Parts News.

2. Abbreviations

The following abbreviations are used in this Parts Catalogue.

“UR” Use specified parts number.

“UN” Use as many as needed.

“AP” Alternate Parts

“LM” Locally Made (Parts need to be ordered locally)

“F#” Frame No. (Applicable machine No.)

“O/S” Over Size

3. The number of components for assembly

- Parts, which are to be supplied in an assembly, are listed with a dot (.) in front of the part name as shown below.
- The numeral appearing to the right of each component part indicates the quantity of parts for each assembly unit.

PART NO.	DESCRIPTION	Q'TY	REMARKS
2F5-83310-60	FRONT FLASHER LIGHT ASSY	2	
115-83311-60	.BULB (6V-18W)	1	

4. Applicable colours of graphics are represented in the “REMARKS” as shown below.

PART NO.	DESCRIPTION	Q'TY	REMARKS
2N4-24110-00-X5	FUEL TANK COMP.	2	MXR
3J1-24240-10	.GRAPHIC, FUEL TANK	1	FOR MXR

5. Note that the illustrations for reference in finding parts numbers are not to be used for assembling. When assembling, please use the applicable service manual.

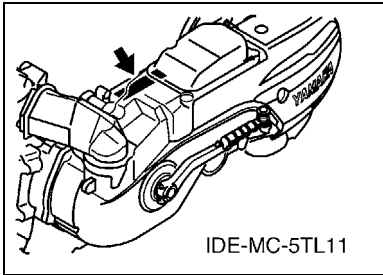
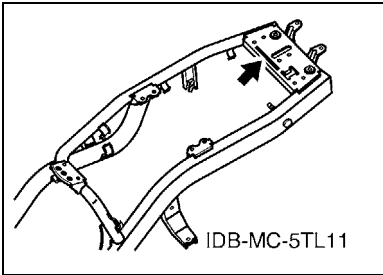
6. The asterisk (*) before a reference number indicates modified items after the first edition.

FOREWORD

7. Applicable Serial No.

Frame Serial No.

Engine Serial No.



8. Applicable Colour Code (The (*) mark shows Model colour.)

Abbreviation	Colour Name	Colour Code
BMC(*)	BLUE METALLIC C	0775
DRMK(*)	DEEP RED METALLIC K	0918
LGM6(*)	LEAF GREEN METALLIC 6	0946
RSM2(*)	REDDISH BLACK METALLIC 2	1159
SL	SILVER	0035
SW(*)	SILKY WHITE	00GE
YB	YAMAHA BLACK	0033

9. Applicable Starting Serial No.

Frame Serial No.

Serial No.	Name Of Q'ty Column	Model Code

Engine Serial No.

Serial No.	Name Of Q'ty Column	Model Code

CONTENTS

ENGINE

CYLINDER	1
CRANKSHAFT & PISTON	3
VALVE	4
CAMSHAFT & CHAIN	5
OIL PUMP	6
AIR SHROUD & FAN	7
INTAKE	8
CARBURETOR	9
EXHAUST	11
CRANKCASE	13
CRANKCASE COVER 1	15
STARTER	17
CLUTCH	18
TRANSMISSION	20

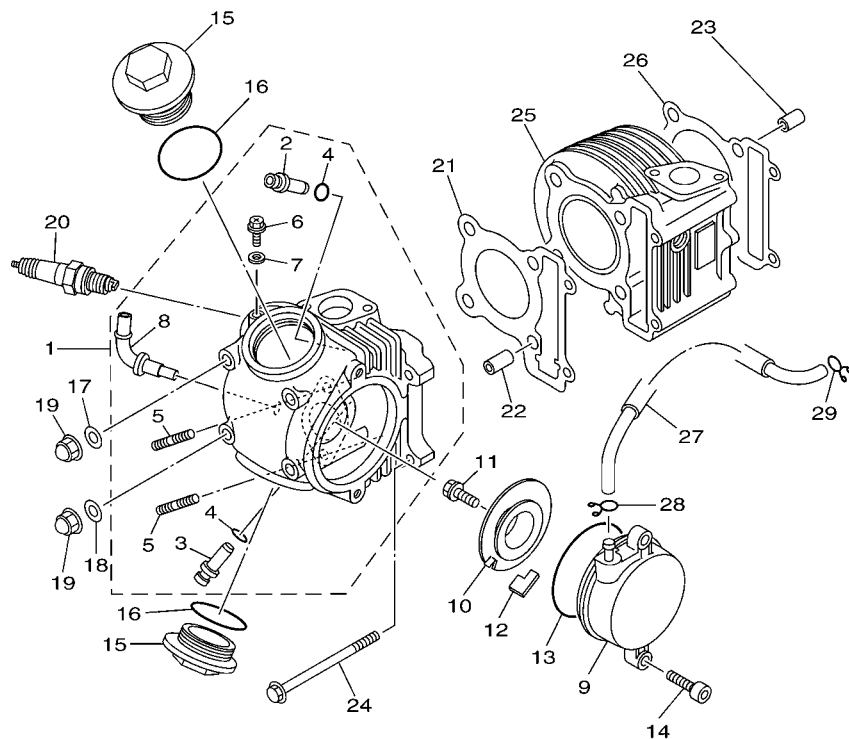
CHASSIS

FRAME	21
FENDER	22
SIDE COVER	23
REAR ARM & SUSPENSION	26
STEERING	27
FUEL TANK	29
SEAT	30
FRONT WHEEL	31
FRONT WHEEL 2	32
FRONT BRAKE CALIPER	33
FRONT BRAKE CALIPER 2	34
REAR WHEEL	35
REAR WHEEL 2	36
STEERING HANDLE & CABLE	37
FRONT MASTER CYLINDER	39
STAND & FOOTREST	40
LEG SHIELD	42
GENERATOR	44
STARTING MOTOR	45
FLASHER LIGHT	46
METER	47
HEADLIGHT	48
TAILLIGHT	49
HANDLE SWITCH & LEVER	50
ELECTRICAL 1	51

ELECTRICAL 2	52
--------------------	----

INDEX

NUMERICAL INDEX	53
-----------------------	----



28D5460-J010

FIG. 1 CYLINDER

REF. NO.	PART NO.	DESCRIPTION	28D7	28D8	28D8	REMARKS
1	28D-E1102-00	CYLINDER HEAD ASSY	1		1	
	28D-E1102-10	CYLINDER HEAD ASSY		1		
2	5LW-11133-10	.GUIDE, VALVE 1	1	1	1	
3	5LW-11134-10	.GUIDE, VALVE 2	1	1	1	
4	93210-09800	.O-RING	2	2	2	
5	90116-08841	.BOLT, STUD	2	2	2	
6	90153-06803	.SCREW, HEXAGON	1	1	1	
7	90430-06014	.GASKET	1	1	1	
8	28D-E4871-00	.PIPE 1	1	1	1	
9	5LW-E1185-00	COVER, CYLINDER HEAD SIDE 1	1	1	1	
10	5LW-E1165-00	PLATE, BREATHER	1	1	1	
11	5LW-E3185-00	BOLT, BREATHER	1	1	1	
12	5LW-E1155-00	SEAL, LABYRINTH	1	1	1	
13	93210-71462	O-RING	1	1	1	
14	91317-06020	BOLT	2	2	2	
15	4ST-E1186-00	COVER, CYLINDER HEAD SIDE 2	2	2	2	
16	93210-448G4	O-RING	2	2	2	
17	90201-08609	WASHER, PLATE	2	2	2	
18	92902-08200	WASHER	2	2	2	
19	90176-08805	NUT, CROWN	4	4	4	
20	94700-00828	PLUG SPARK (NGK C7HSA)	1	1	1	UR
	94700-00886	PLUG, SPARK (DENSO U22FS-U)	1	1	1	UR DENSO
21	5LW-E1181-00	GASKET, CYLINDER HEAD 1	1	1	1	
22	91810-14809	PIN, DOWEL	2	2	2	
23	91810-14809	PIN, DOWEL	2	2	2	
24	95027-06100	BOLT, FLANGE	2	2	2	
25	5LW-E1310-00	CYLINDER	1		1	

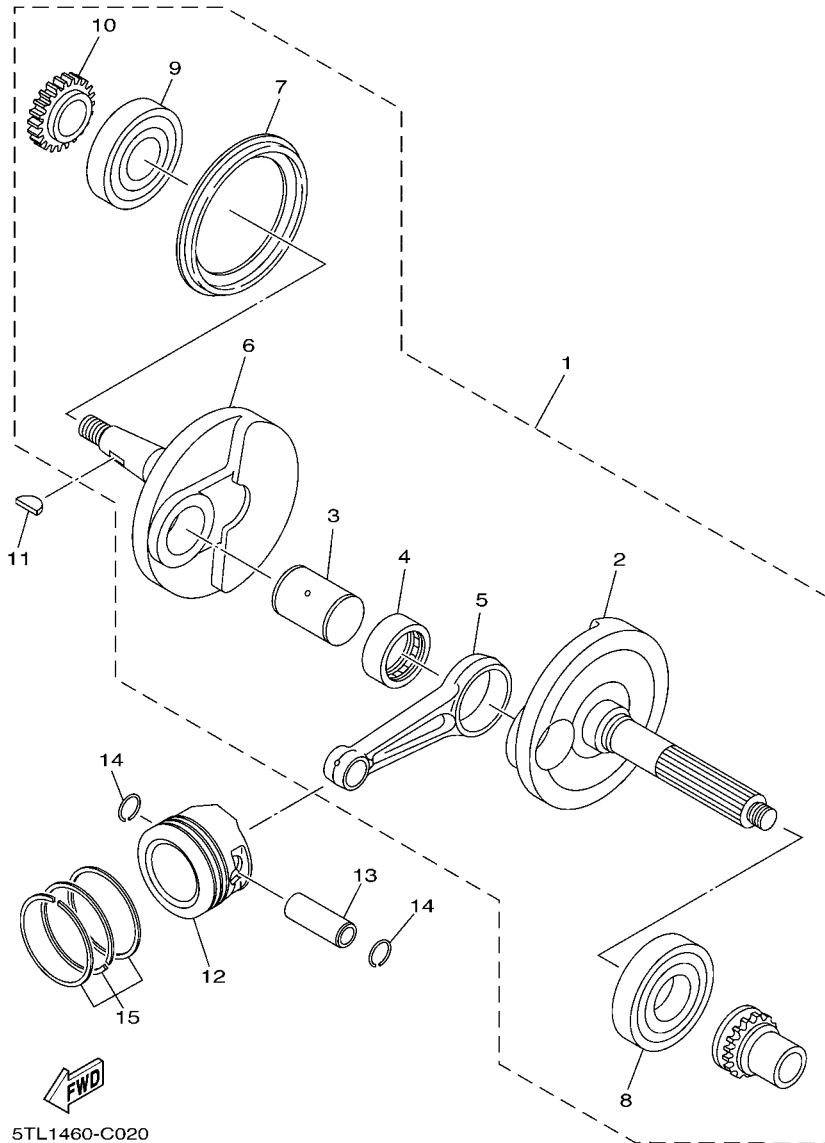
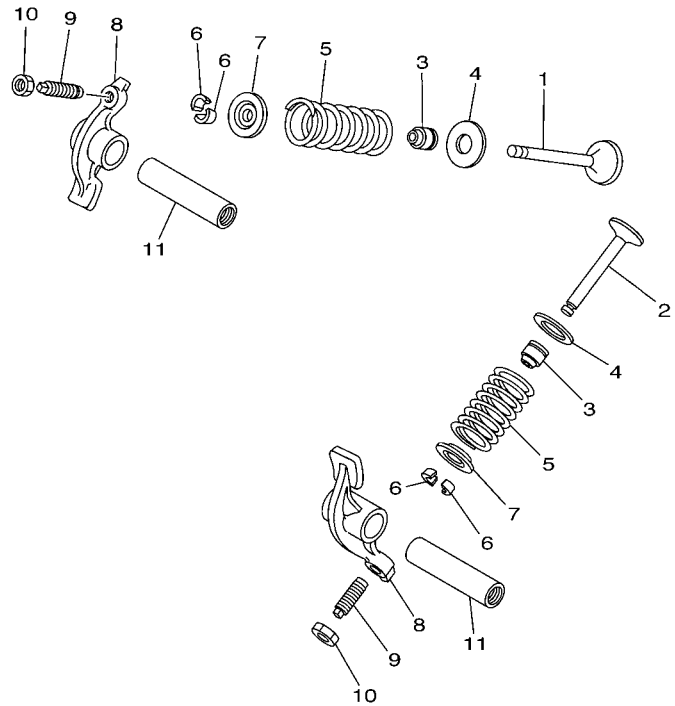


FIG. 2 CRANKSHAFT & PISTON

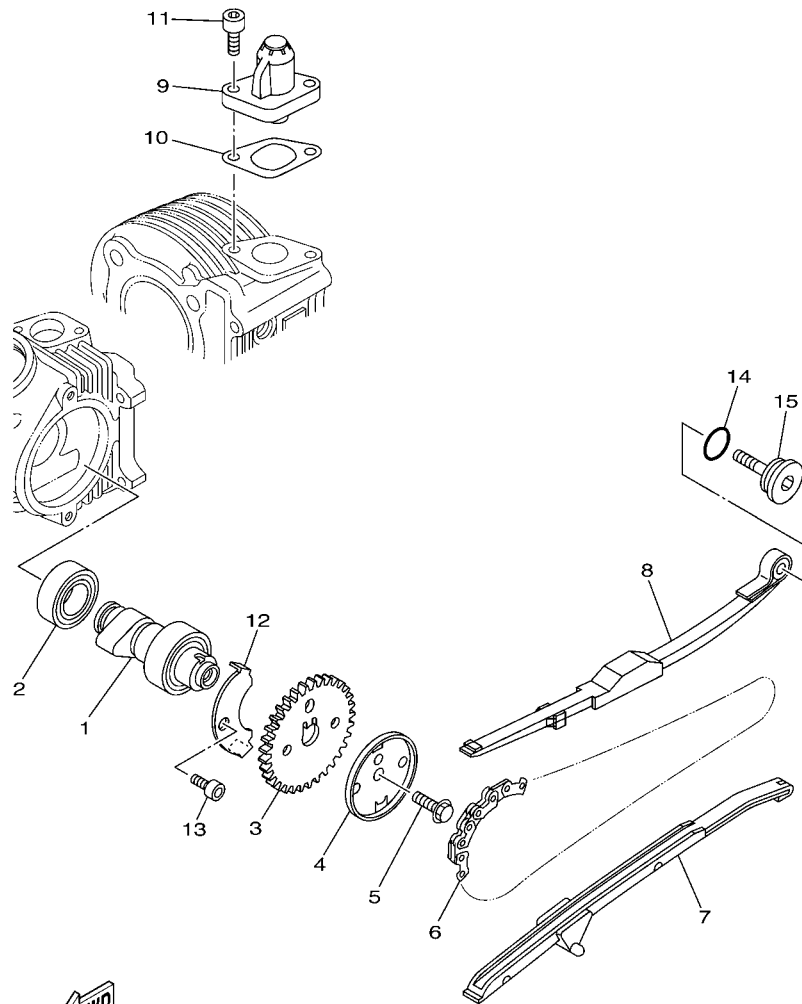
REF. NO.	PART NO.	DESCRIPTION	28D7	28DD	28D8	REMARKS
1	28D-E1400-00	CRANKSHAFT ASSY	1		1	
	28D-E1400-10	CRANKSHAFT ASSY		1		
2	2D5-E1412-00	.CRANK 1	1	1	1	
3	5MX-E1681-10	.PIN, CRANK 1	1	1	1	
4	93310-528Y8	.BEARING	1	1	1	
5	5MX-E1651-10	.ROD, CONNECTING	1	1	1	
6	2D5-E1422-00	.CRANK 2	1	1	1	
7	5LW-E3452-00	.COVER, ROTOR FILTER	1	1	1	
8	93306-305X3	.BEARING	1		1	
	93306-305YV	.BEARING			1	
9	93306-372Y1	.BEARING	1		1	
	93306-372Y7	.BEARING			1	
10	5TL-E3324-00	.GEAR, PUMP DRIVE	1	1	1	
11	90280-03017	KEY, WOODRUFF	1	1	1	
12	5MX-E1631-00	PISTON (STD)	1	1	1	
	5MX-E1636-00	PISTON (0.50MM O/S)	1	1	1	AP
	5MX-E1638-00	PISTON (1.00MM O/S)	1	1	1	AP
13	5MX-E1633-10	PIN, PISTON	1	1	1	
14	93450-16068	CIRCLIP	2	2	2	
15	5MX-E1603-10	PISTON RING SET (STD)	1	1	1	
	5MX-E1605-10	PISTON RING SET (0.50MM O/S)	1	1	1	AP
	5MX-E1607-10	PISTON RING SET (1.00MM O/S)	1	1	1	AP



5LW1440-A031

FIG. 3 VALVE

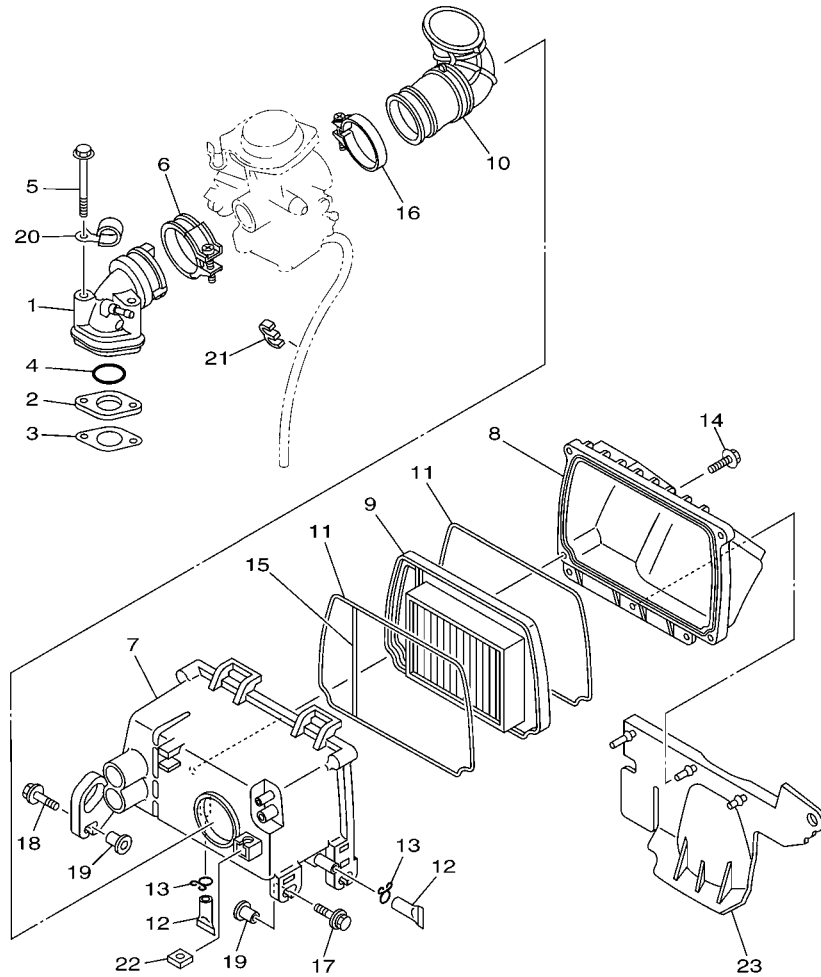
REF. NO.	PART NO.	DESCRIPTION	28D7	28DD	28D8	REMARKS
1	5LW-E2111-00	VALVE, INTAKE	1	1	1	
2	5LW-E2121-00	VALVE, EXHAUST	1	1	1	
3	5MX-E2119-00	SEAL, VALVE STEM	2	2	2	
4	5MX-E2116-00	SEAT, VALVE SPRING	2	2	2	
5	28D-E2113-00	SPRING, VALVE INNER	2	2	2	
6	5TL-E2118-00	COTTER, VALVE	4	4	4	
7	33M-12117-01	RETAINER, VALVE SPRING	2	2	2	
8	2P2-E2151-00	ARM, VALVE ROCKER	2	2	2	
9	22F-12159-00	SCREW, VALVE ADJUSTING	2	2	2	
10	90170-05302	NUT	2	2	2	
11	4ST-E2156-00	SHAFT, ROCKER 2	2	2	2	




 5TL1460-C041

FIG. 4 CAMSHAFT & CHAIN

REF. NO.	PART NO.	DESCRIPTION	28D7	28DD	28D8	REMARKS
1	5TL-E2170-00	CAMSHAFT ASSY 1	1	1	1	UR
	5LW-E2170-10	CAMSHAFT ASSY 1	1	1	1	UR
2	93306-002X2	BEARING	1	1	1	
3	5MX-E2176-00	SPROCKET, CAM CHAIN	1	1	1	
4	5MX-E1145-00	PLATE, BREATHER 2	1	1	1	
5	95817-08016	BOLT, FLANGE	1	1	1	
6	94568-B3090	CHAIN	1	1	1	
7	5VV-E2231-00	GUIDE, STOPPER 1	1	1	1	
8	5MX-E2241-00	GUIDE, STOPPER 2	1	1	1	
9	5MX-E2210-10	TENSIONER ASSY, CAM CHAIN	1	1	1	
10	5MX-E2213-01	GASKET, TENSIONER CASE	1	1	1	
11	91317-06016	BOLT	2	2	2	
12	5LW-E111F-00	PLATE	1	1	1	
13	91317-06012	BOLT	1	1	1	
14	93210-15862	O-RING	1	1	1	
15	4CW-E2157-00	BOLT	1	1	1	



28D5460-J070

FIG. 7 INTAKE

REF. NO.	PART NO.	DESCRIPTION	28D7	28DD	28D8	REMARKS
1	28D-E3585-00	MANIFOLD	1	1	1	
2	5MX-E3595-10	JOINT	1	1	1	
3	5MX-E3556-01	GASKET, MANIFOLD	1	1	1	
4	93210-25803	O-RING	1	1	1	
5	95817-06065	BOLT, FLANGE	2	2	2	
6	5MX-E3474-01	BAND	1	1	1	
7	5TL-E4411-10	CASE, AIR CLEANER 1	1	1	1	
8	5TL-E4412-00	CAP, CLEANER CASE 1	1	1	1	
9	28D-WE445-10	AIR CLEANER ELEMENT ASSY	1	1	1	
10	5TL-E4453-00	JOINT, AIR CLEANER 1	1	1	1	
11	5TL-E4452-00	SEAL	2	2	2	
12	28D-E443E-00	PIPE, DRAIN	2	2	2	
13	90467-12807	CLIP	2	2	2	
14	90163-05803	SCREW, TAPPING	4	4	4	
15	5TL-E4462-00	SEAL	1	1	1	
16	5MX-E3575-01	BAND	1	1	1	
17	90119-06182	BOLT, WITH WASHER	2	2	2	
18	90119-06211	BOLT, WITH WASHER	1	1	1	
19	90387-06891	COLLAR	3	3	3	
20	90465-06376	CLAMP	1	1	1	
21	90464-60810	CLAMP	1	1	1	
22	90173-06801	NUT, SQUARE	1	1	1	
23	5TL-F1691-00	FLAP	1	1	1	

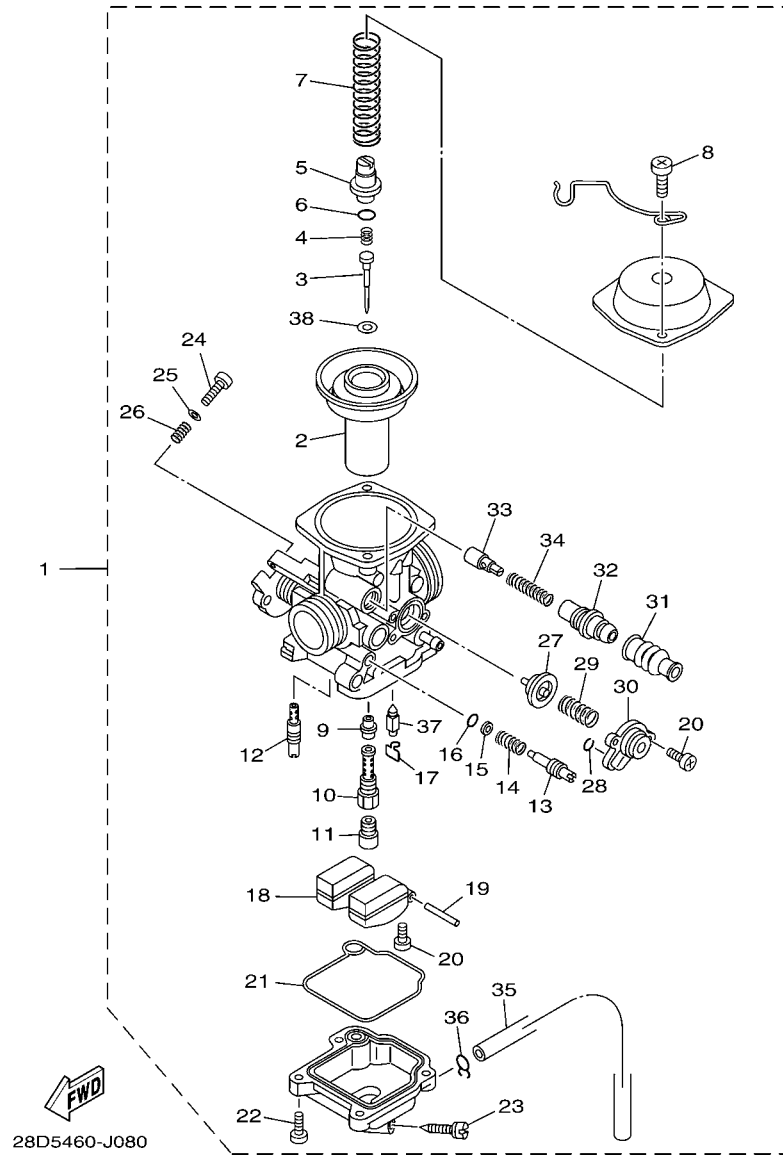


FIG. 8 CARBURETOR

REF. NO.	PART NO.	DESCRIPTION	28D7	28DD	28D8	REMARKS
1	28D-E4901-20	CARBURETOR ASSY 1	1	1	1	
2	5TL-E4940-00	.DIAPHRAGM ASSY	1	1	1	
3	14D-E4916-00	.JET NEEDLE COMP.	1	1	1	
4	4D0-E4133-00	.SPRING, THROTTLE STOP	1	1	1	
5	4D0-E4936-00	.SEAT, SPRING	1	1	1	
6	3TJ-14564-40	.O-RING	1	1	1	
7	5TL-E4933-00	.SPRING, DIAPHRAGM	1	1	1	
8	5TL-E4D25-00	.SCREW, PAN HEAD	2	2	2	
9	5TL-E4947-00	.JET, NEEDLE	1	1	1	
10	14D-E414G-00	.PIPE, MAIN BLEED	1	1	1	
11	4D0-E4943-00	.JET, MAIN (# 108)	1	1	1	
12	5TL-E4948-02	.JET (#38)	1	1	1	
13	4D0-E4923-00	.SCREW, PILOT	1	1	1	
14	4JH-14160-00	.COIL, SPRING	1	1	1	
15	3TJ-14952-40	.WASHER	1	1	1	
16	3TJ-14562-40	.O-RING	1	1	1	
17	663-14159-00	.CLIP	1	1	1	
18	5TL-E4985-00	.FLOAT	1	1	1	
19	676-14548-00	.PIN, FLOAT ARM	1	1	1	
20	688-14592-00	.SCREW	3	3	3	
21	5TL-E4984-00	.GASKET, FLOAT CHAMBER	1	1	1	
22	98502-04012	.SCREW, PAN HEAD	4	4	4	
23	5TL-E4191-00	.PLUG, DRAIN	1	1	1	
24	5TL-E4922-00	.SCREW, THROTTLE	1	1	1	
25	4TV-14557-00	.WASHER	1	1	1	
26	5TL-E4531-00	.SPRING, ADJUST SCREW	1	1	1	
27	5TL-E4170-00	.DIAPHRAGM ASSY	1	1	1	

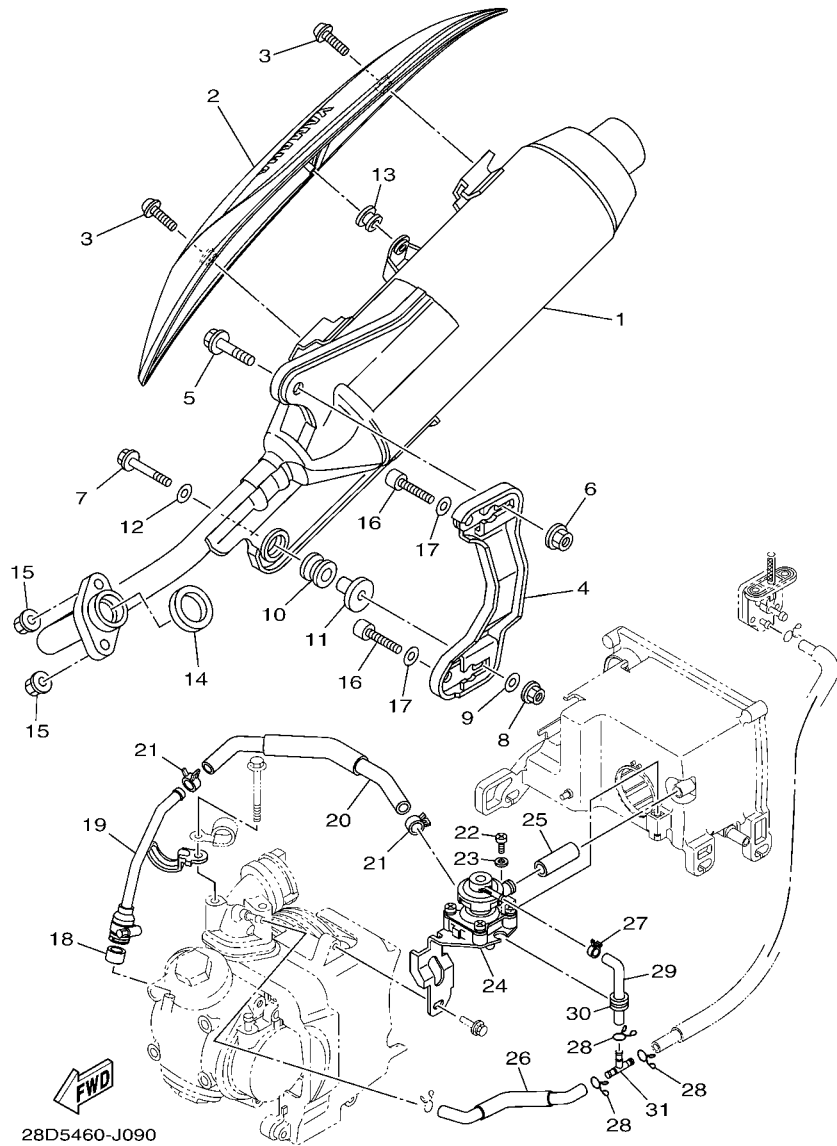


FIG. 9 EXHAUST

REF. NO.	PART NO.	DESCRIPTION	28D7	28DD	28D8	REMARKS
1	28D-E4610-00	EXHAUST PIPE ASSY 1	1	1	1	
2	28D-E4718-00	PROTECTOR, MUFFLER 1	1	1	1	
3	90111-06807	BOLT,HEX. SOCKET BUTTON	2	2	2	
4	28D-E4770-00	STAY, MUFFLER 1	1	1	1	
5	95817-10035	BOLT, FLANGE	1	1	1	
6	95707-10500	NUT, FLANGE	1	1	1	
7	95817-08045	BOLT, FLANGE	1	1	1	
8	90185-08017	NUT, SELF-LOCKING	1	1	1	
9	90201-081R9	WASHER, PLATE	1	1	1	
10	5TL-E4747-00	DAMPER, MUFFLER	1	1	1	
11	5TL-E479M-20	COLLAR 1	1	1	1	
12	90201-08043	WASHER, PLATE	1	1	1	
13	90480-10332	GROMMET	1	1	1	
14	14D-E4613-00	GASKET, EXHAUST PIPE	1	1	1	
15	95707-08500	NUT, FLANGE	2	2	2	
16	91317-08035	BOLT	2	2	2	
17	90201-08043	WASHER, PLATE	2	2	2	
18	28D-E4714-00	GASKET, MUFFLER	1	1	1	
19	5TL-E4872-00	PIPE 2	1	1	1	
20	28D-E4881-00	HOSE, BEND 1	1	1	1	
21	90467-13806	CLIP	2	2	2	
22	98507-06014	SCREW, PAN HEAD	1	1	1	
23	92907-06600	WASHER, PLATE	1	1	1	
24	5TL-E4803-10	AIR INDUCTION SYSTEM ASSY	1	1	1	
25	5TL-E3545-00	HOSE 1	1	1	1	
26	5TL-E3542-00	HOSE, VACUUM SENSING 1	1	1	1	
27	90467-08804	CLIP	1	1	1	

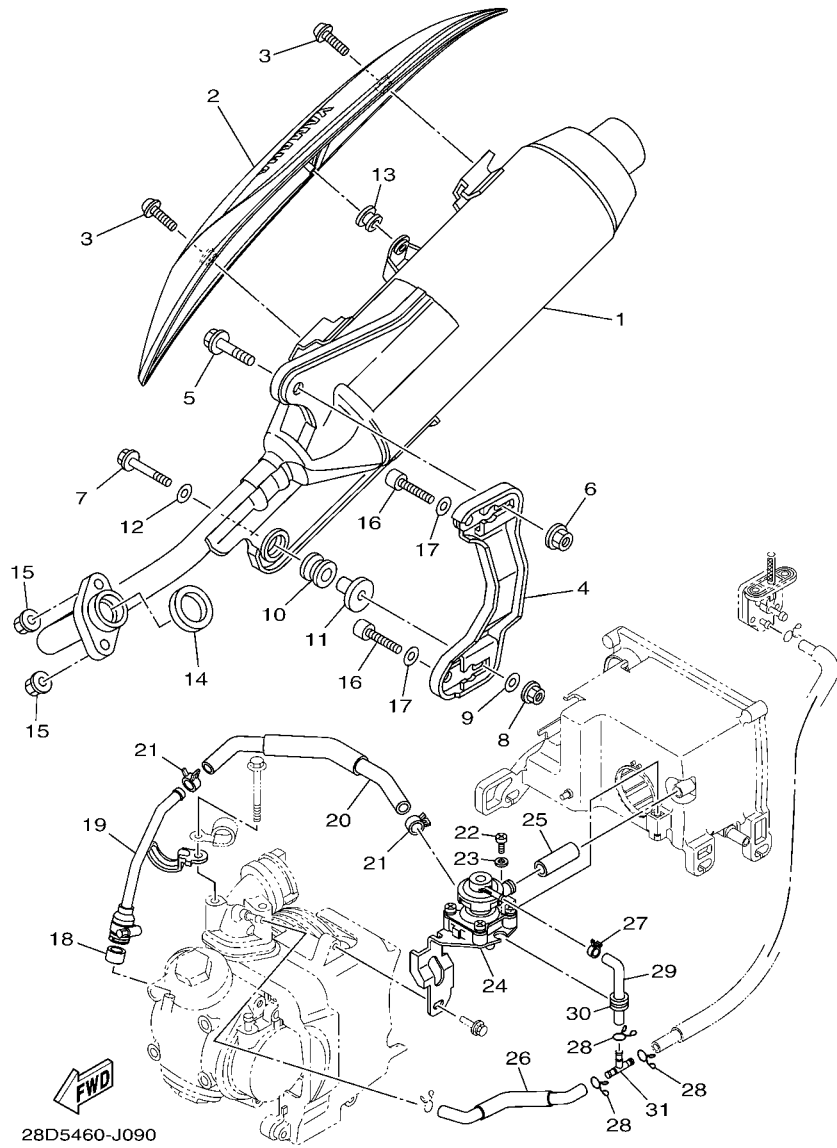


FIG. 9 EXHAUST

REF. NO.	PART NO.	DESCRIPTION	28D7	28DD	28D8	REMARKS
28	90467-08075	CLIP	3	3	3	
29	5TL-E3543-00	HOSE, AIR	1	1	1	
30	90480-13M24	GROMMET	1	1	1	
31	90413-05014	WAY 3	1	1	1	

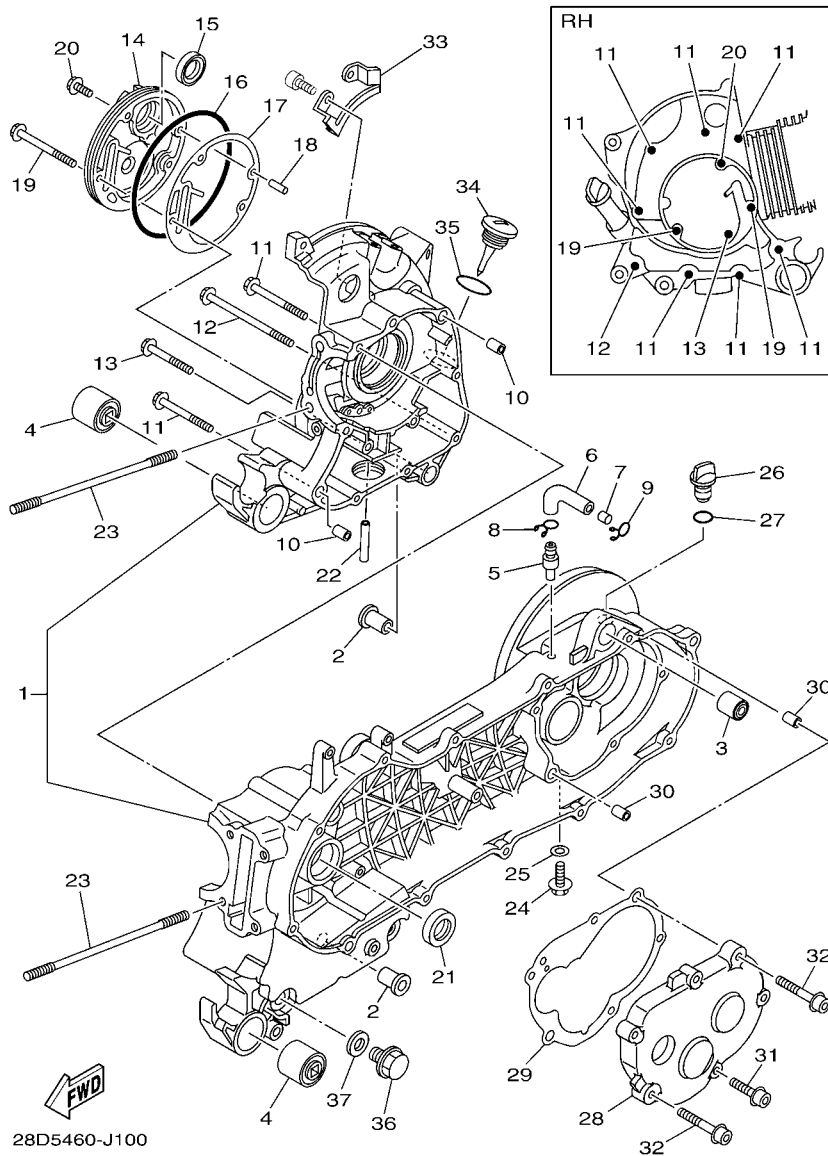


FIG. 10 CRANKCASE

REF. NO.	PART NO.	DESCRIPTION	28D7	28DD	28D8	REMARKS
1	5TL-E5150-11	CRANKCASE ASSY	1		1	UR
	5TL-E5150-31	CRANKCASE ASSY	1		1	UR
	5VV-E5150-11	CRANKCASE ASSY	1	1	1	UR
	5WP-E5150-12	CRANKCASE ASSY	1	1	1	UR
	51S-E5150-30	CRANKCASE ASSY			1	UR
2	28D-F7121-00	BUSH	2	2	2	UR
	5MX-F7121-00	BUSH		2		UR
3	5MX-F2216-00	BUSH, REAR SHOCK ABSORBER	1	1	1	
4	5TL-F2123-00	BUSH 1	2	2	2	
5	5TL-E5371-00	BREATHER	1	1	1	
6	5TL-E5373-00	PIPE, BREATHER	1	1	1	
7	14D-E5408-00	ELEMENT 2	1	1	1	
8	90467-11106	CLIP	1	1	1	
9	90467-11106	CLIP	1	1	1	
10	91810-14809	PIN, DOWEL	2	2	2	
11	95027-06060	BOLT, FLANGE	7	7	7	
12	95027-06100	BOLT, FLANGE	1	1	1	
13	95027-06050	BOLT, FLANGE	1	1	1	
14	5LW-E5417-00	COVER, CAP	1	1	1	
15	93102-19800	OIL SEAL	1	1	1	
16	93211-07800	O-RING	1	1	1	
17	5LW-E5453-00	GASKET	1	1	1	
18	99480-05010	PIN	1	1	1	
19	95027-06070	BOLT, FLANGE	2	2	2	
20	95027-06016	BOLT, FLANGE	1	1	1	
21	93102-22810	OIL SEAL	1	1	1	
22	5LW-E3416-00	PIPE, OIL 1	1	1	1	

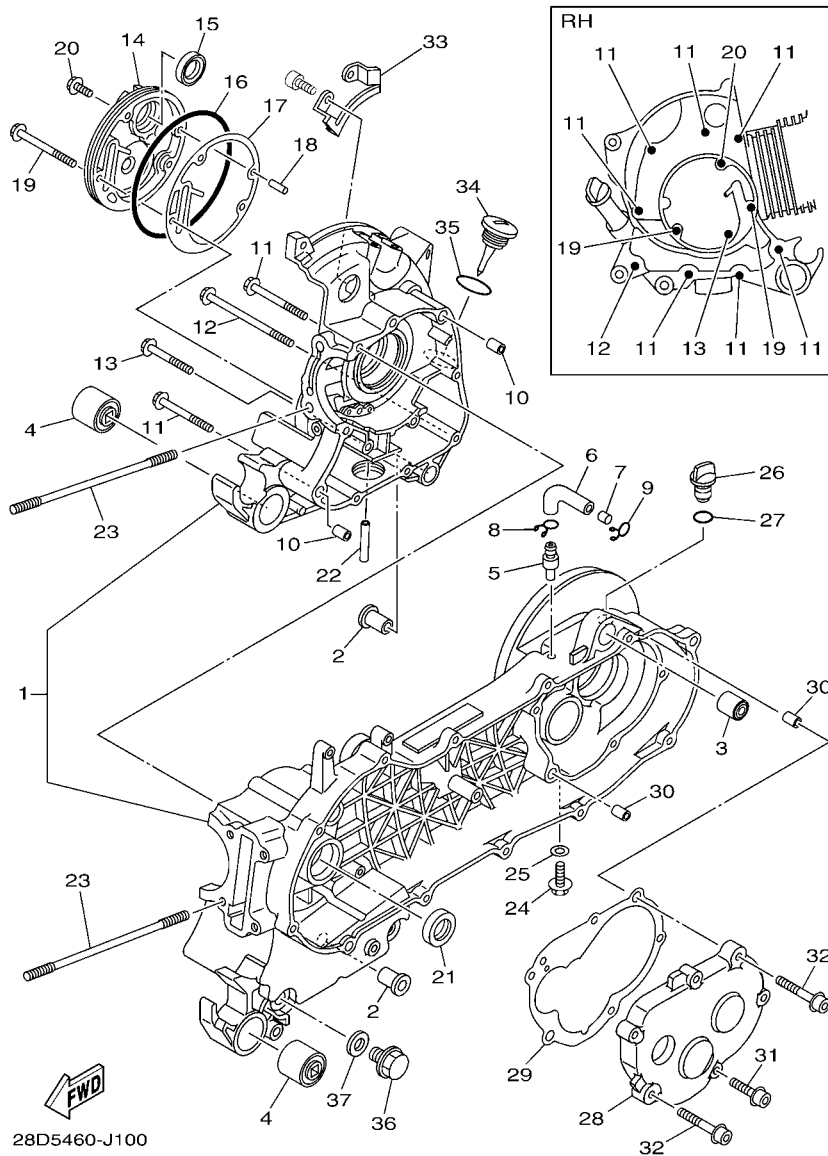


FIG. 10 CRANKCASE

REF. NO.	PART NO.	DESCRIPTION	28D7	28DD	28D8	REMARKS
23	5MX-E1391-00	BOLT, STUD 1	4	4	4	
24	95817-08016	BOLT, FLANGE	1	1	1	
25	90430-08119	GASKET	1	1	1	
26	5LW-E5363-00	PLUG, OIL	1	1	1	
27	93210-148H8	O-RING	1	1	1	
28	14D-E5421-00	COVER, CRANKCASE 2	1	1	1	
29	14D-E5461-00	GASKET, CRANKCASE COVER 2	1	1	1	
30	91810-14809	PIN, DOWEL	2	2	2	
31	90110-06846	BOLT, HEXAGON SOCKET HEAD	4	4	4	
32	90110-06849	BOLT, HEXAGON SOCKET HEAD	2	2	2	
33	5LW-E5113-00	PLATE	1	1	1	
34	28D-E5362-00	PLUG, OIL LEVEL	1	1	1	
35	5LW-E3769-00	O-RING	1	1	1	
36	90340-12808	PLUG, STRAIGHT SCREW	1	1	1	
37	4YS-E1198-00	GASKET	1	1	1	

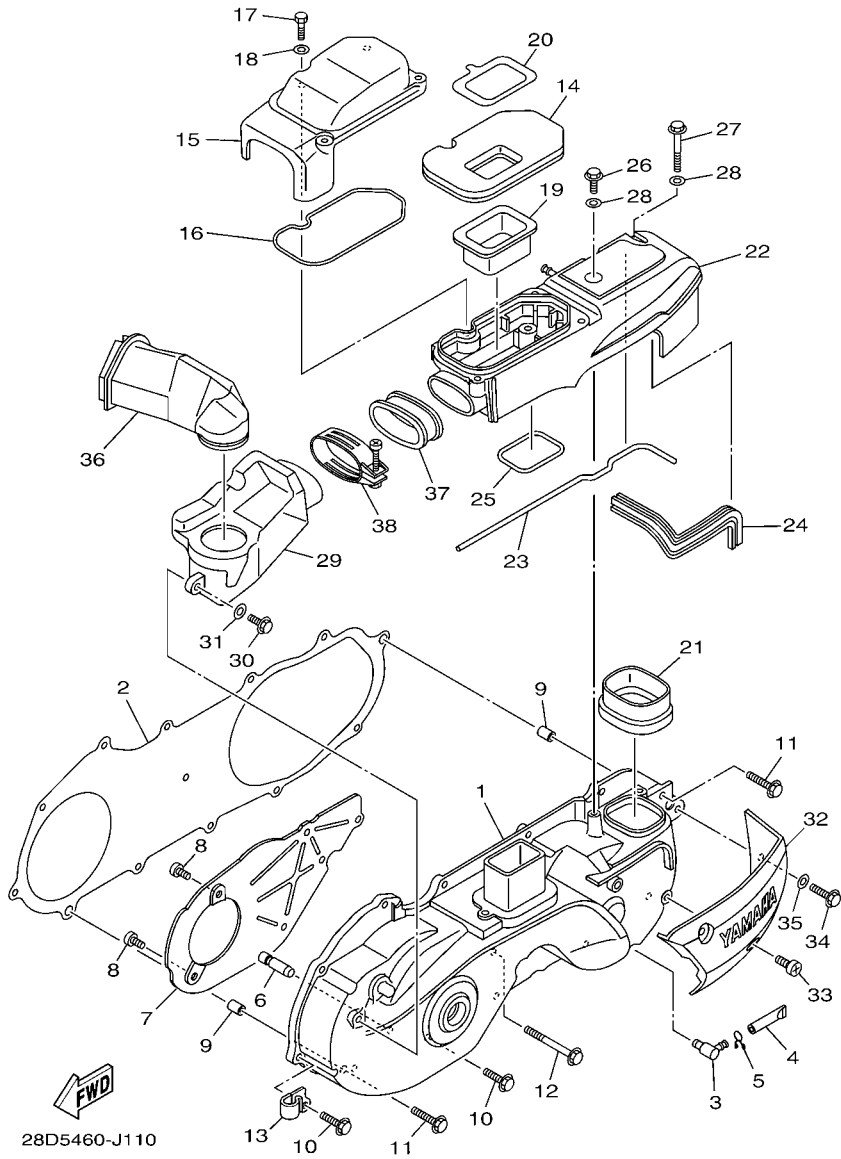


FIG. 11 CRANKCASE COVER 1

REF. NO.	PART NO.	DESCRIPTION	28D7	28DD	28D8	REMARKS
1	28D-E5411-00	COVER, CRANKCASE 1	1	1	1	
2	5LW-E5451-00	GASKET, CRANKCASE COVER 1	1	1	1	
3	5LW-E5371-01	BREATHER	1	1	1	
4	4ST-E443E-00	PIPE, DRAIN	1	1	1	
5	90467-11106	CLIP	1	1	1	
6	5LW-15659-01	SHAFT	1	1	1	
7	28D-E5191-00	PLATE	1	1	1	
8	98907-06010	SCREW, BIND	4	4	4	
9	91810-14809	PIN, DOWEL	2	2	2	
10	95027-06025	BOLT, FLANGE	10	10	10	
11	95027-06035	BOLT, FLANGE	2	2	2	
12	95027-06060	BOLT, FLANGE	1	1	1	
13	90462-10802	CLAMP	1	1	1	
14	5TL-E5407-01	ELEMENT 1	1	1	1	
15	5TL-E5333-00	COVER	1	1	1	
16	5TL-E5472-00	SEAL, AIR DUCT	1	1	1	
17	97007-05020	BOLT	4	4	4	
18	92907-05600	WASHER, PLATE	4	4	4	
19	5TL-E5404-00	GUIDE, ELEMENT	1	1	1	
20	5TL-E5497-00	PLATE, DUST SEAL	1	1	1	
21	5TL-E5475-00	DUCT, AIR	1	1	1	
22	5TL-E5492-00	COVER	1	1	1	
23	5TL-E5315-00	SEAL, CRANKCASE	1	1	1	
24	5TL-E5379-00	SEAL, CRANKCASE	1	1	1	
25	5TL-E5494-00	SEAL, PROTECTOR	1	1	1	
26	95027-06016	BOLT, FLANGE	3	3	3	
27	95027-06050	BOLT, FLANGE	1	1	1	

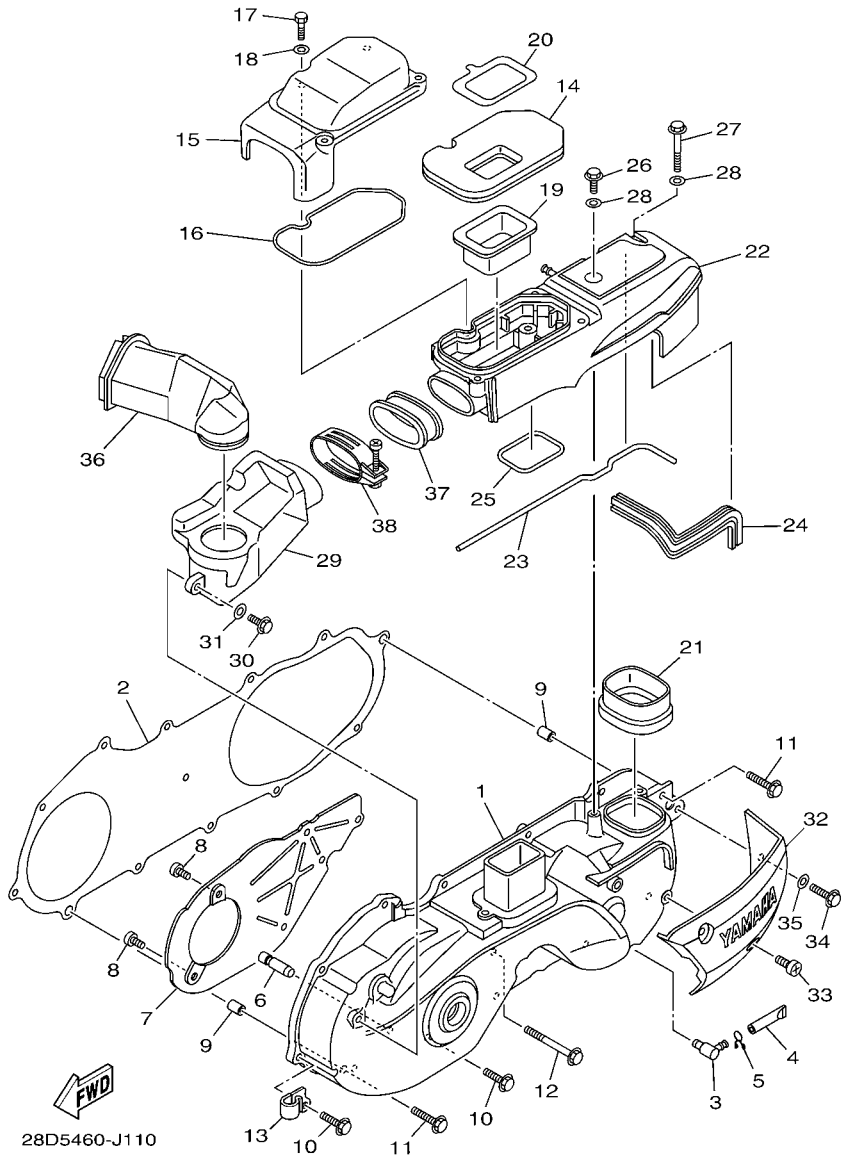
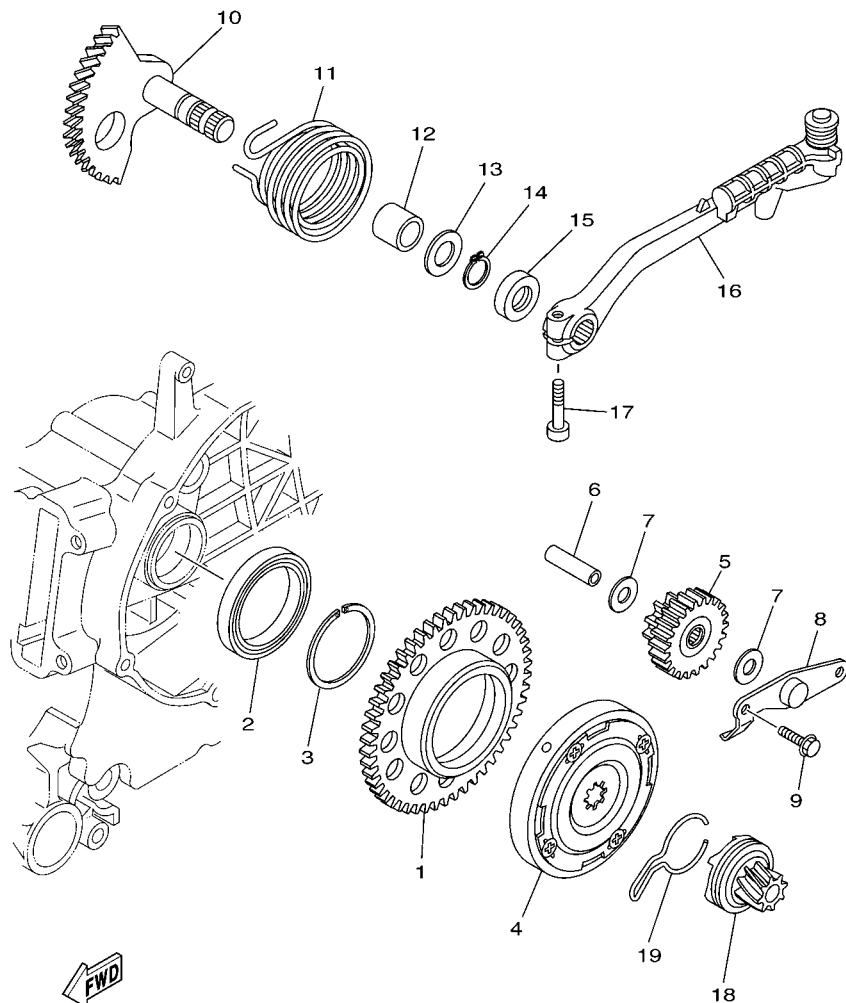


FIG. 11 CRANKCASE COVER 1

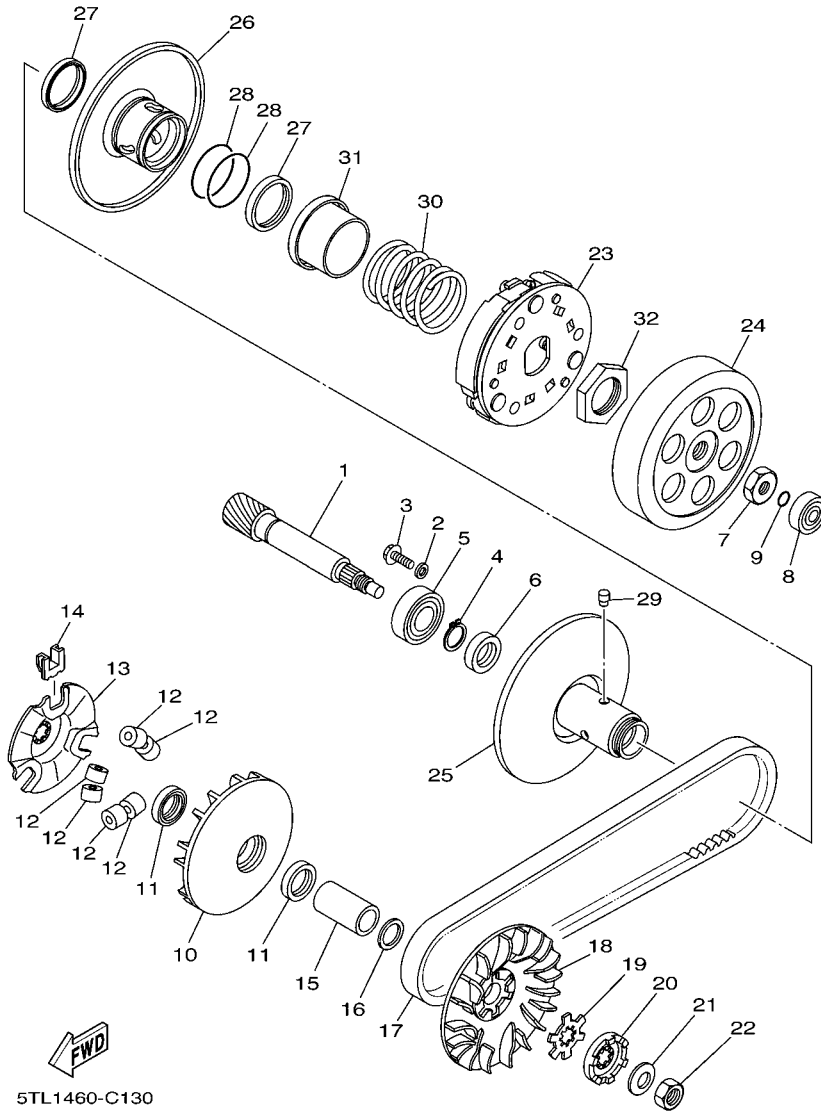
REF. NO.	PART NO.	DESCRIPTION	28D7	28DD	28D8	REMARKS
28	92907-06200	WASHER	4	4	4	
29	5TL-E5471-00	DUCT, AIR	1	1	1	
30	95027-06016	BOLT, FLANGE	1	1	1	
31	92907-06200	WASHER	1	1	1	
32	5TL-E5413-00	COVER	1	1	1	
33	98907-06012	SCREW, BIND	2	2	2	
34	95027-06016	BOLT, FLANGE	1	1	1	
35	92907-06200	WASHER	1	1	1	
36	5TL-E5473-00	DUCT, AIR	1	1	1	
37	5TL-E5474-00	SEAL, AIR DUCT	1	1	1	
38	5TL-E5484-00	CLAMP 2	1	1	1	



5VV2431-D120

FIG. 12 STARTER

REF. NO.	PART NO.	DESCRIPTION	28D7	28DD	28D8	REMARKS
1	28D-E5524-00	WHEEL, STARTER	1	1	1	
2	93306-809Y0	BEARING	1	1	1	
3	93440-45827	CIRCLIP	1	1	1	
4	5VV-E5570-10	STARTER CLUTCH ASSY	1	1	1	
5	51S-E5650-00	IDLE GEAR ASSY			1	
5	5TL-E5650-10	IDLE GEAR ASSY	1		1	
6	5MX-E5521-00	SHAFT 1	1	1	1	
7	90201-10018	WASHER, PLATE	2	2	2	
8	5LW-E5532-00	PLATE, IDLE GEAR	1	1	1	
9	95027-06012	BOLT, FLANGE	2	2	2	
10	28D-E5601-00	KICK SHAFT ASSY	1	1	1	
11	90508-32768	SPRING, TORSION	1	1	1	
12	90380-15809	BUSH, SOLID	1	1	1	
13	90201-154E8	WASHER, PLATE (T=1.0)	1	1	1	
14	99009-15400	CIRCLIP	1	1	1	
15	93102-15801	OIL SEAL	1	1	1	
16	5MX-E5620-01	KICK CRANK ASSY	1	1	1	
17	91317-06025	BOLT	1	1	1	
18	4VP-E5630-00	KICK PINION ASSY	1	1	1	
19	5MX-E5673-00	CLIP	1	1	1	

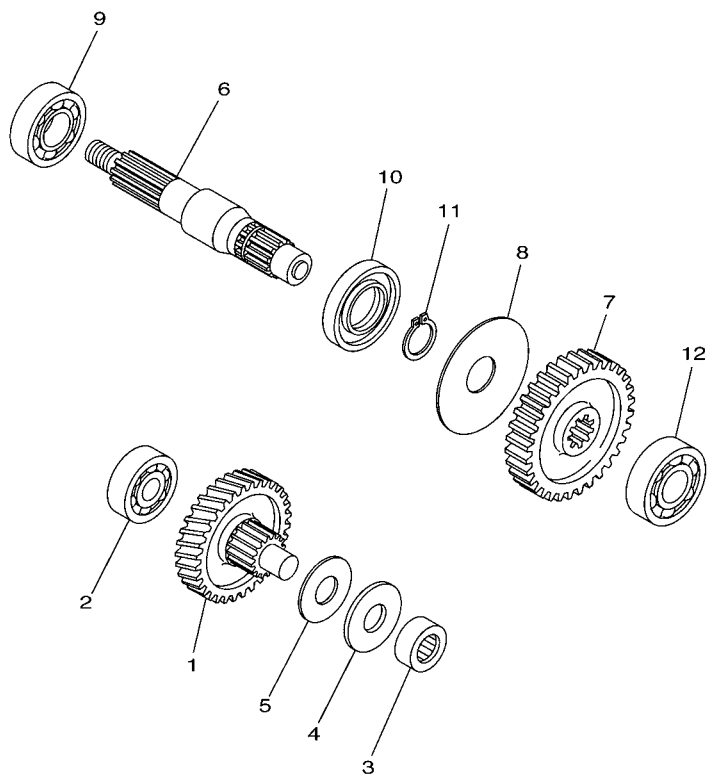


5TL1460-C130

FIG. 13 CLUTCH

REF. NO.	PART NO.	DESCRIPTION	28D7	28DD	28D8	REMARKS
1	2D5-E6111-00	GEAR, PRIMARY DRIVE	1	1	1	UR
	28D-E6111-00	GEAR, PRIMARY DRIVE	1	1	1	UR
2	90201-06060	WASHER, PLATE	1	1	1	
3	95027-06010	BOLT, FLANGE	1	1	1	
4	99009-17400	CIRCLIP	1	1	1	
5	93306-203YY	BEARING	1	1	1	
6	93102-17812	OIL SEAL	1	1	1	
7	90170-10317	NUT	1	1	1	
8	93300-638Y8	BEARING	1	1	1	
9	93210-06800	O-RING	1	1	1	
10	5LW-E7620-00	PRIMARY SLIDING SHEAVE COMP.	1	1	1	
11	93101-21803	OIL SEAL	2	2	2	
12	4VP-17632-00	WEIGHT	6	6	6	
13	5TL-E7623-00	CAM	1	1	1	
14	5LW-17653-00	SLIDER	3	3	3	
15	90387-16811	COLLAR	1	1	1	UR
	90387-16009	COLLAR	1	1	1	UR
16	90201-16008	WASHER, PLATE	1	1	1	
17	5TL-E7641-01	V-BELT	1	1	1	
18	5TL-E7611-00	SHEAVE, PRIMARY FIXED	1	1	1	
19	90214-14002	WASHER, CLAW	1	1	1	
20	5MX-E5657-00	CLUTCH, ONEWAY	1	1	1	
21	90208-12050	WASHER, CONICAL SPRING	1	1	1	
22	95307-12700	NUT	1	1	1	
23	5TL-E6620-02	CLUTCH CARRIER ASSY	1	1	1	
24	5TL-E6611-03	CLUTCH HOUSING COMP.	1	1	1	
25	5TL-E7660-00	SECONDARY FIXED SHEAVE COMP.	1	1	1	

FIG. 14 TRANSMISSION



REF. NO.	PART NO.	DESCRIPTION	28D7	28DD	28D8	REMARKS
1	5TL-E7410-10	MAIN AXLE COMP. (13T/47T)	1	1	1	
2	93306-301XT	BEARING	1	1	1	
3	93311-315Y6	BEARING	1	1	1	
4	90201-15008	WASHER, PLATE	1	1	1	
5	90201-15016	WASHER, PLATE	1	1	1	
6	5TL-E7421-10	AXLE, DRIVE	1	1	1	
7	5TL-E7211-00	GEAR, 1ST WHEEL (42T)	1	1	1	
8	90208-21002	WASHER, CONICAL SPRING	1	1	1	
9	93306-054X9	BEARING	1	1	1	
10	93102-26800	OIL SEAL	1	1	1	
11	93410-20070	CIRCLIP	1	1	1	
12	93306-203YY	BEARING	1	1	1	



5VV2431-D140

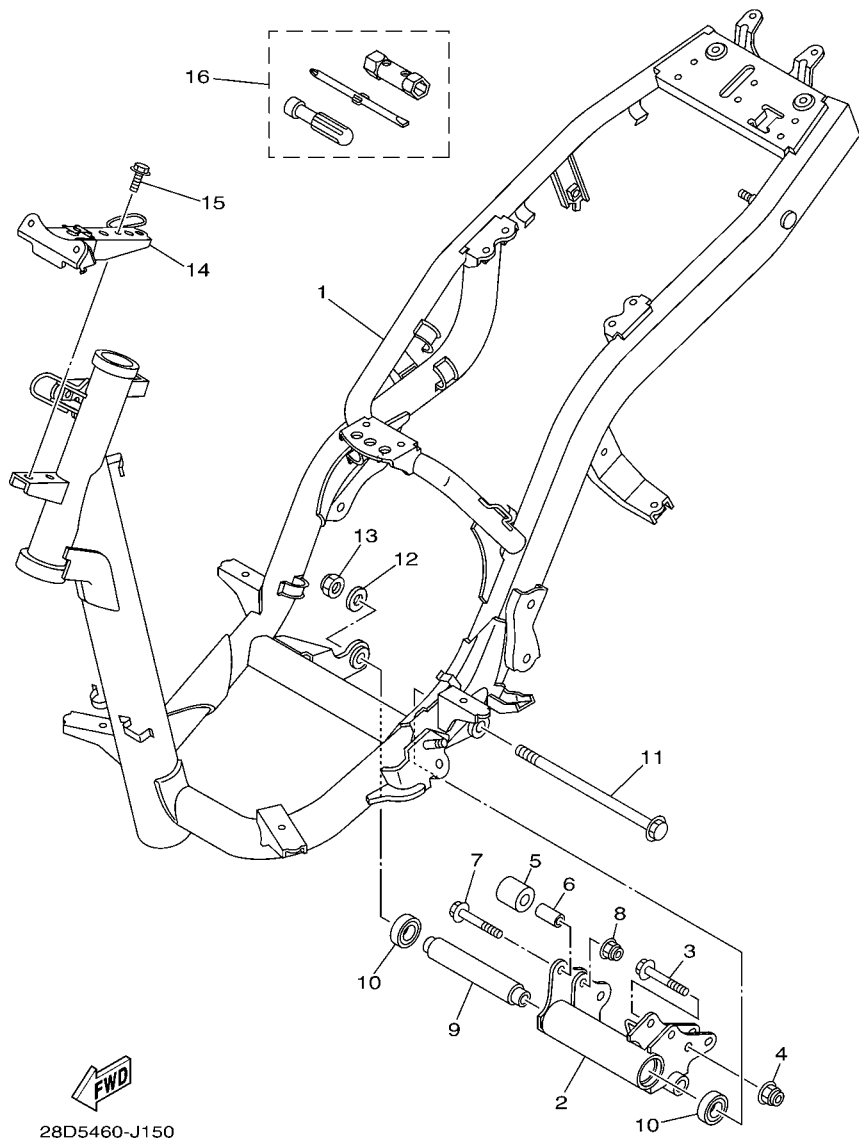
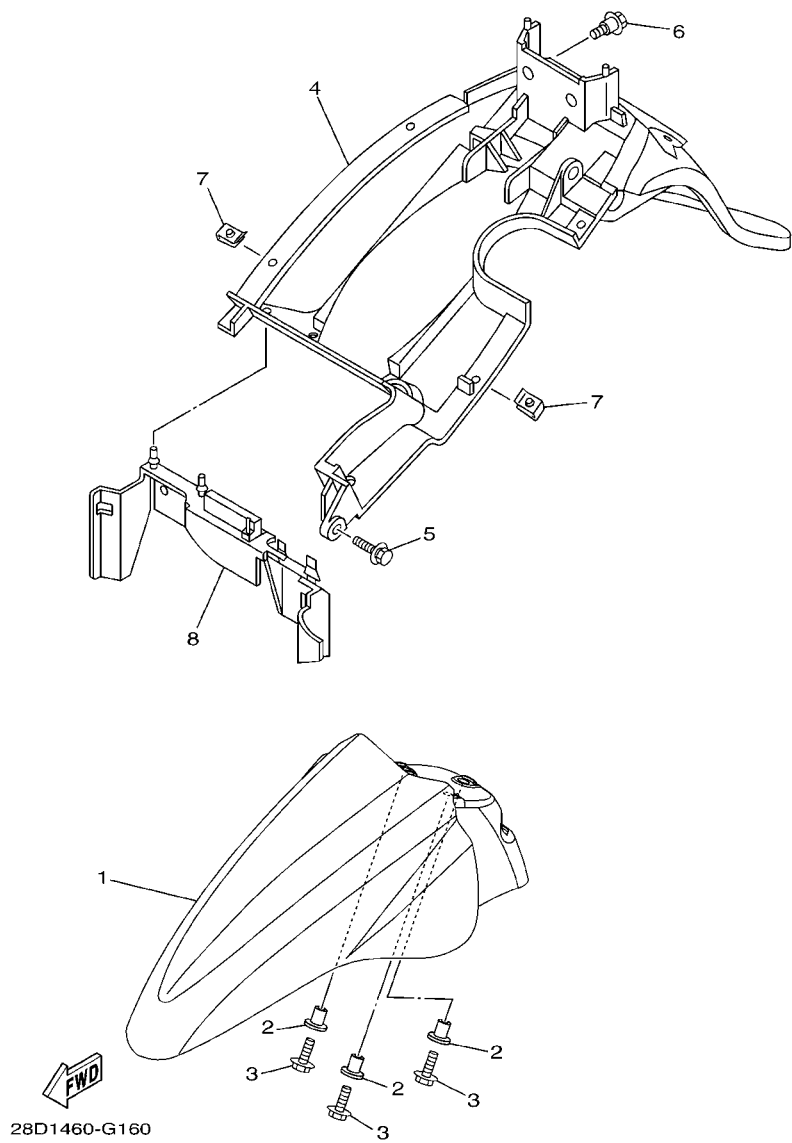


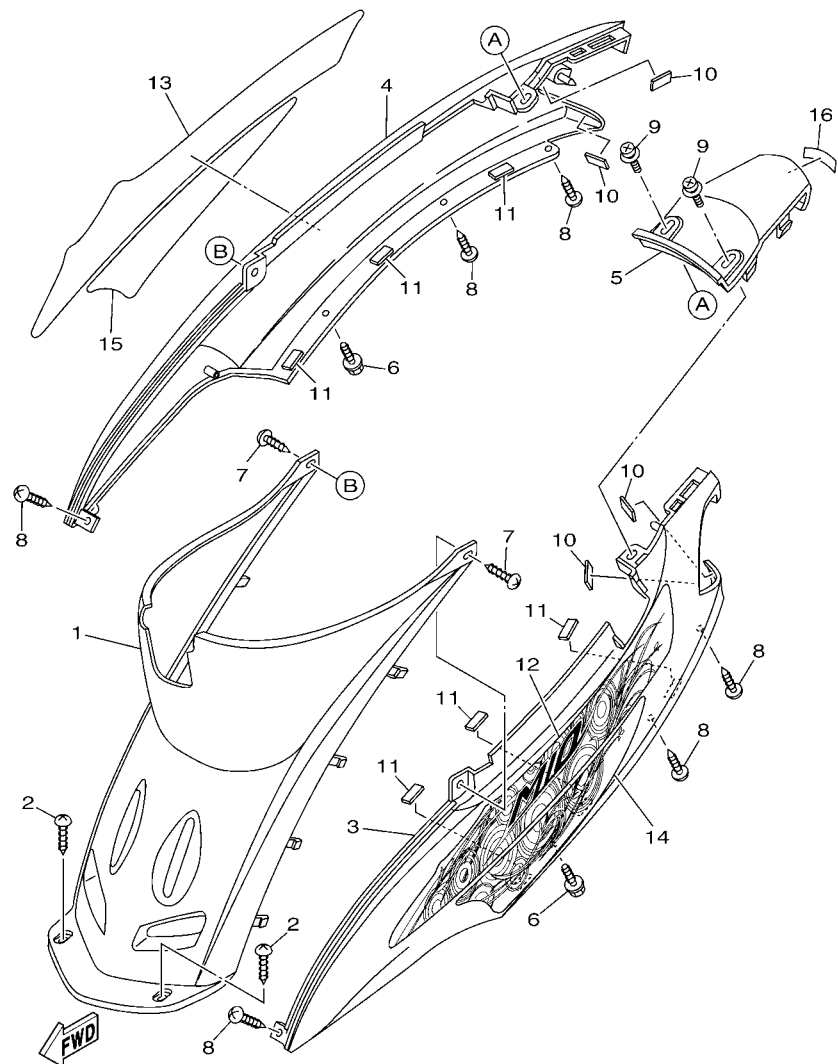
FIG. 15 FRAME

REF. NO.	PART NO.	DESCRIPTION	28D7	28DD	28D8	REMARKS
1	51S-F1110-01	FRAME COMP.		1		
	5TL-F1110-11	FRAME COMP.	1	1		
2	28D-F1410-00	ENGINE BRACKET COMP.	1	1	1	
3	90105-10066	BOLT, FLANGE	2	2	2	
4	9560L-10200	NUT, SELF-LOCKING	2	2	2	
5	5MX-F7114-00	STOPPER, MAIN STAND	2	2	2	
6	90387-08754	COLLAR	2	2	2	
7	90105-08048	BOLT, FLANGE	2	2	2	
8	95602-08200	NUT, SELF-LOCKING	2	2	2	
9	5TL-F1459-00	SPACER	1	1	1	
10	93306-003YR	BEARING	2	2	2	
11	5TL-F5181-01	AXLE, WHEEL	1	1	1	
12	90201-12688	WASHER, PLATE	1	1	1	
13	90185-12008	NUT, SELF-LOCKING	1	1	1	
14	28D-F8356-00	STAY 1	1	1	1	
15	95807-06010	BOLT, FLANGE	2	2	2	
16	5TL-F8100-00	TOOL KIT	1	1	1	

FIG. 16 FENDER



REF. NO.	PART NO.	DESCRIPTION	28D7	28DD	28D8	REMARKS
1	28D-F1511-00-P5	FENDER, FRONT	1		1	UR FOR RSM2
	28D-F1511-00-P0	FENDER, FRONT	1		1	UR FOR DRMK
	28D-F1511-00-P3	FENDER, FRONT	1			UR FOR BMC
	28D-F1511-00-P4	FENDER, FRONT	1			UR FOR LGM6
	28D-F1511-00-GE	FENDER, FRONT	1		1	UR FOR SW
<hr style="border-top: 1px dashed black;"/>						
	51S-F1511-00-P5	FENDER, FRONT			1	UR FOR RSM2
	51S-F1511-00-P1	FENDER, FRONT			1	UR FOR DRMK
	51S-F1511-00-P3	FENDER, FRONT			1	UR FOR BMC
	51S-F1511-00-P4	FENDER, FRONT			1	UR FOR LGM6
	51S-F1511-00-GE	FENDER, FRONT			1	UR FOR SW
<hr style="border-top: 1px dashed black;"/>						
2	90387-068S1	COLLAR	3	3	3	
3	95807-06014	BOLT, FLANGE	3	3	3	
4	5TL-F1611-00	FENDER, REAR	1	1	1	
5	90119-06044	BOLT, WITH WASHER	1	1	1	
6	90109-063F1	BOLT	2	2	2	
<hr style="border-top: 1px dashed black;"/>						
7	90183-05807	NUT, SPRING	4	4	4	
8	5TL-F1621-00	FLAP	1	1	1	
<hr style="border-top: 1px dashed black;"/>						
<hr style="border-top: 1px dashed black;"/>						
<hr style="border-top: 1px dashed black;"/>						



28D7460-K170

FIG. 17 SIDE COVER

REF. NO.	PART NO.	DESCRIPTION	28D7	28DD	28D8	REMARKS
1	5TL-F1711-00	COVER, SIDE 1	1	1	1	
2	97707-50012	SCREW, TRUSS HEAD TAPPING	2	2	2	
3	5TL-F1721-00-PA	COVER, SIDE 2	1	1		UR FOR RSM2
	5TL-F1721-00-P4	COVER, SIDE 2	1	1		UR FOR DRMK
	5TL-F1721-00-P8	COVER, SIDE 2	1			UR FOR BMC
	5TL-F1721-00-P9	COVER, SIDE 2	1			UR FOR LGM6
	5TL-F1721-00-GE	COVER, SIDE 2	1	1		UR FOR SW
	51S-F1721-00-P5	COVER, SIDE 2		1		UR FOR RSM2
	51S-F1721-00-P1	COVER, SIDE 2		1		UR FOR DRMK
	51S-F1721-00-P3	COVER, SIDE 2		1		UR FOR BMC
	51S-F1721-00-P4	COVER, SIDE 2		1		UR FOR LGM6
	51S-F1721-00-GE	COVER, SIDE 2		1		UR FOR SW
4	5TL-F1731-00-PA	COVER, SIDE 3	1	1		UR FOR RSM2
	5TL-F1731-00-P4	COVER, SIDE 3	1	1		UR FOR DRMK
	5TL-F1731-00-P8	COVER, SIDE 3	1			UR FOR BMC
	5TL-F1731-00-P9	COVER, SIDE 3	1			UR FOR LGM6
	5TL-F1731-00-GE	COVER, SIDE 3	1	1		UR FOR SW
	51S-F1731-00-P5	COVER, SIDE 3		1		UR FOR RSM2
	51S-F1731-00-P1	COVER, SIDE 3		1		UR FOR DRMK
	51S-F1731-00-P3	COVER, SIDE 3		1		UR FOR BMC
	51S-F1731-00-P4	COVER, SIDE 3		1		UR FOR LGM6
	51S-F1731-00-GE	COVER, SIDE 3		1		UR FOR SW
5	5TL-F1741-00-PA	COVER, SIDE 4	1	1		UR FOR RSM2
	5TL-F1741-00-P4	COVER, SIDE 4	1	1		UR FOR DRMK
	5TL-F1741-00-P8	COVER, SIDE 4	1			UR FOR BMC
	5TL-F1741-00-P9	COVER, SIDE 4	1			UR FOR LGM6
	5TL-F1741-00-GE	COVER, SIDE 4	1	1		UR FOR SW

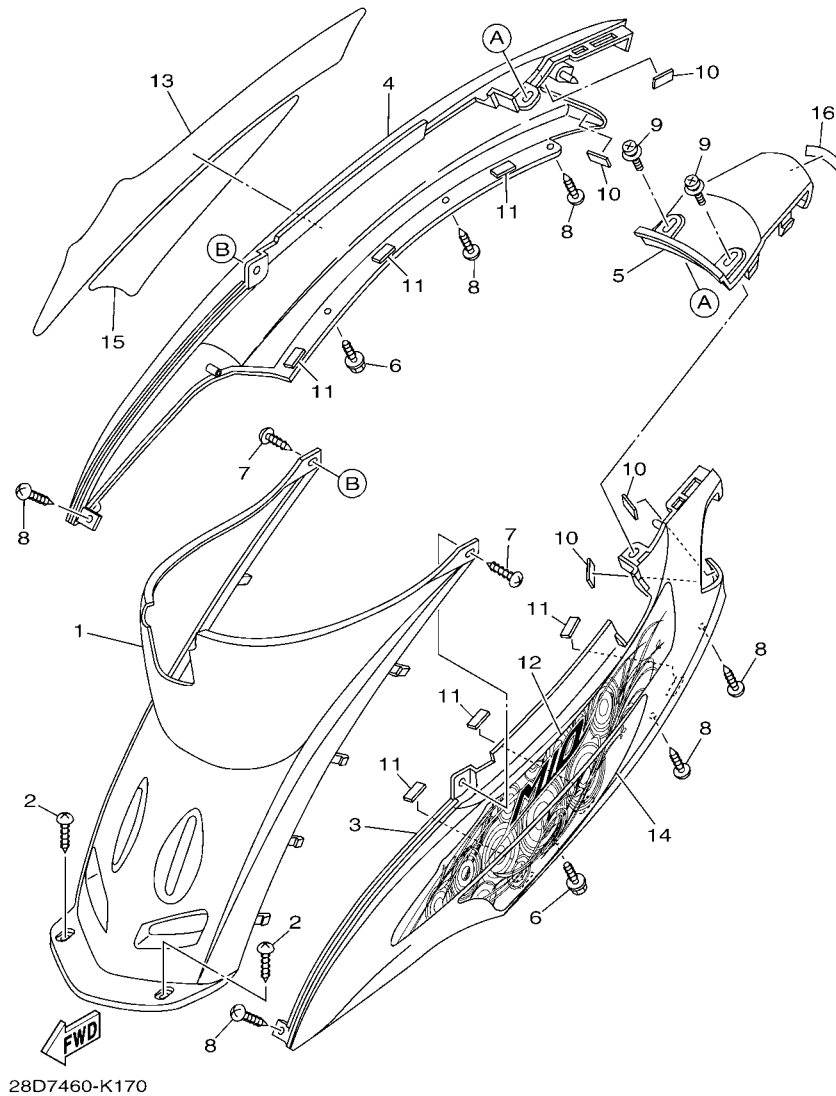
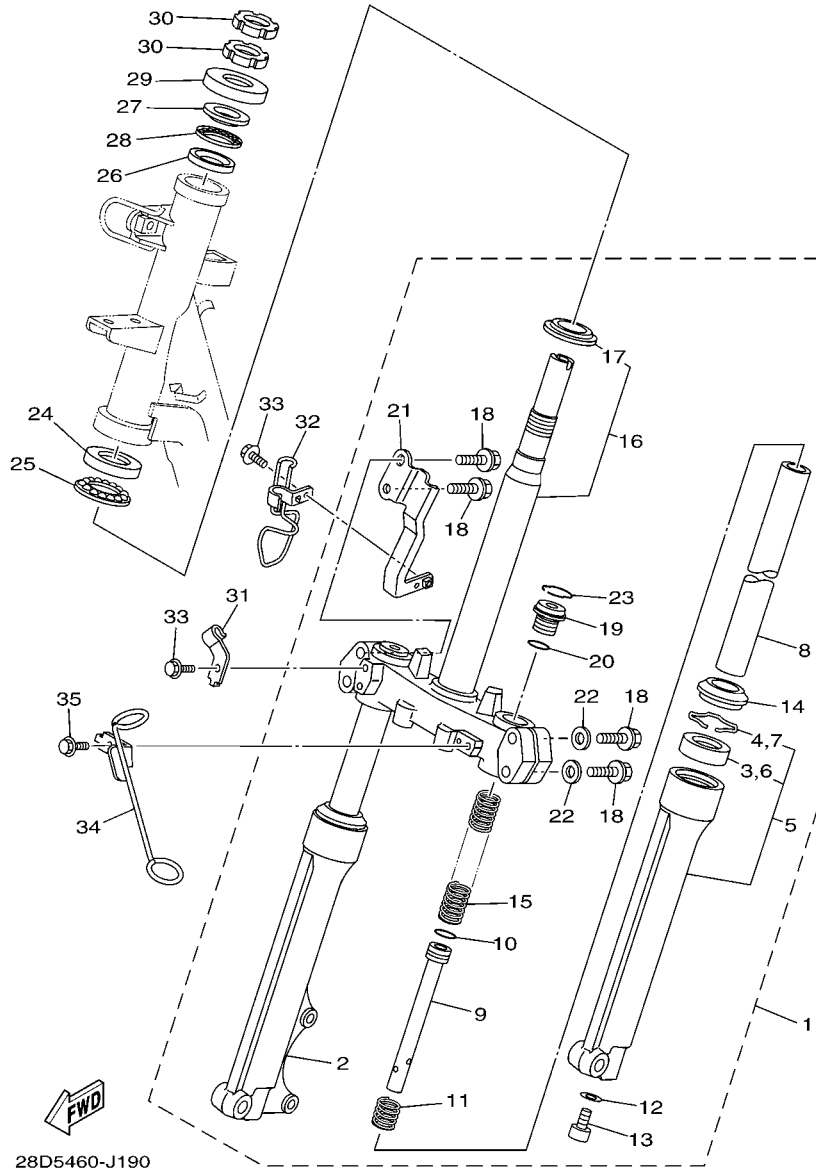


FIG. 17 SIDE COVER

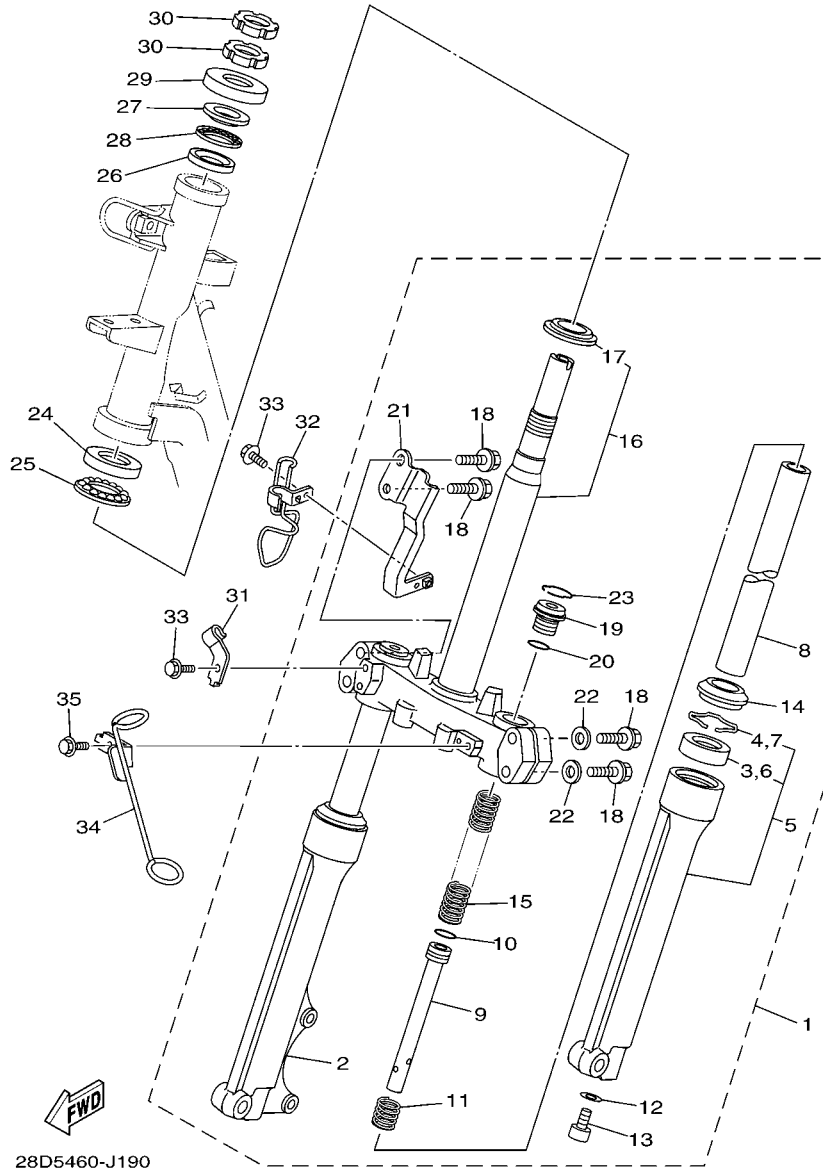
REF. NO.	PART NO.	DESCRIPTION	28D7	28DD	28D8	REMARKS
5	51S-F1741-00-P5	COVER, SIDE 4		1		UR FOR RSM2
	51S-F1741-00-P1	COVER, SIDE 4		1		UR FOR DRMK
	51S-F1741-00-P3	COVER, SIDE 4		1		UR FOR BMC
	51S-F1741-00-P4	COVER, SIDE 4		1		UR FOR LGM6
	51S-F1741-00-GE	COVER, SIDE 4		1		UR FOR SW
6	90163-05801	SCREW, TAPPING	2	2	2	
7	97707-50016	SCREW, TRUSS HEAD TAPPING	2	2	2	
8	97707-50012	SCREW, TRUSS HEAD TAPPING	6	6	6	
9	90159-06067	SCREW, WITH WASHER	2	2	2	
10	5TL-F1746-00	DAMPER	4	4	4	
11	5LM-F8371-00	DAMPER	6	6	6	
12	28D-F173E-N0	GRAPHIC, 1	1	1	1	UR FOR RSM2
	28D-F173E-P0	GRAPHIC, 1	1	1	1	UR FOR DRMK
	28D-F173E-R0	GRAPHIC, 1	1	1		UR FOR BMC
	28D-F173E-T0	GRAPHIC, 1			1	UR FOR SW
	28D-F173E-S0	GRAPHIC, 1	1	1		UR FOR LGM6
	28D-F173E-T0	GRAPHIC, 1	1	1		UR FOR SW
13	28D-F173F-N0	GRAPHIC, 2	1	1	1	UR FOR RSM2
	28D-F173F-P0	GRAPHIC, 2	1	1	1	UR FOR DRMK
	28D-F173F-R0	GRAPHIC, 2	1	1		UR FOR BMC
	28D-F173F-T0	GRAPHIC, 2			1	UR FOR SW
	28D-F173F-S0	GRAPHIC, 2	1	1		UR FOR LGM6
	28D-F173F-T0	GRAPHIC, 2	1	1		UR FOR SW
14	28D-F174G-N0	GRAPHIC, 3	1	1	1	UR FOR RSM2
	28D-F174G-P0	GRAPHIC, 3	1	1	1	UR FOR DRMK
	28D-F174G-R0	GRAPHIC, 3	1	1		UR FOR BMC
	28D-F174G-T0	GRAPHIC, 3			1	UR FOR SW



28D5460-J190

FIG. 19 STEERING

REF. NO.	PART NO.	DESCRIPTION	28D7	28DD	28D8	REMARKS
1	28D-F3100-21	FRONT FORK ASSY	1	1	1	
2	28D-F3136-20	.TUBE, OUTER (RIGHT)	1	1	1	
3	3AY-F3145-00	..OIL SEAL	1	1	1	
4	5P0-F3156-00	..RING, SNAP	1	1	1	
5	28D-F3126-20	.TUBE, OUTER (LEFT)	1	1	1	
6	3AY-F3145-00	..OIL SEAL	1	1	1	
7	5P0-F3156-00	..RING, SNAP	1	1	1	
8	28D-F3110-00	.INNER TUBE COMP.1	2	2	2	
9	28D-F3170-00	.CYLINDER COMP., FRONT FORK	2	2	2	
10	2JG-F3157-00	.RING, PISTON	2	2	2	
11	5D9-F3152-00	.SPRING, SUB	2	2	2	
12	509-F3158-L0	.GASKET	2	2	2	
13	278-F3181-50	.BOLT, HEXAGON SOCKET HEAD	2	2	2	
14	5LM-F3144-00	.SEAL, DUST	2	2	2	
15	28D-F3141-00	.SPRING, FRONT FORK	2	2	2	
16	14D-F3340-00	.UNDER BRACKET COMP.	1	1	1	
17	18G-23411-00	..RACE, BALL 1	1	1	1	
18	4D0-F3346-00	.BOLT 1	4	4	4	
19	28D-F3111-00	.BOLT, CAP	2	2	2	
20	2JG-F3147-00	.O-RING	2	2	2	
21	14D-F334G-00	.BRACKET 1	1	1	1	
22	4D0-F3165-00	.WASHER, FELT	2	2	2	
23	5P0-F3153-00	.RING, SNAP	2	2	2	
24	156-23412-00	RACE, BALL 2	1	1	1	
25	5TL-2341E-00	RETAINER, BALL BEARING (16)	1	1	1	
26	22F-23412-01	RACE, BALL 2	1	1	1	
27	22F-23411-01	RACE, BALL 1	1	1	1	

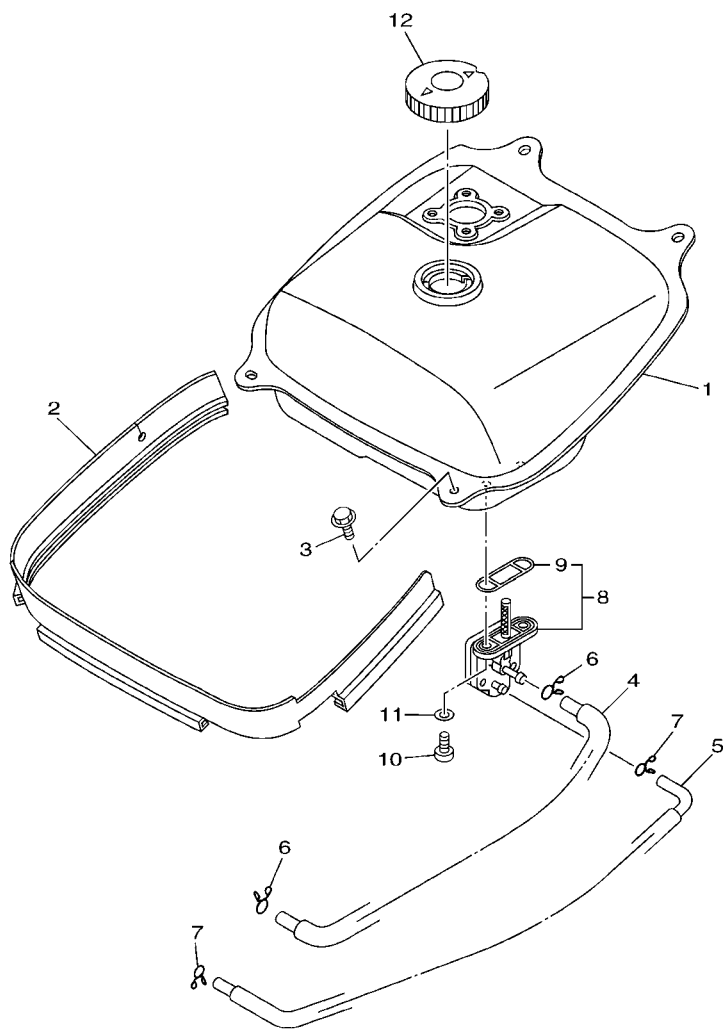


28D5460-J190

FIG. 19 STEERING

REF. NO.	PART NO.	DESCRIPTION	28D7	28DD	28D8	REMARKS
28	5TL-2341E-10	RETAINER, BALL BEARING (19)	1	1	1	
29	5TL-F3416-00	COVER, BALL RACE 2	1	1	1	
30	90179-25033	NUT	2	2	2	
31	28D-F5875-00	HOLDER, BRAKE HOSE 1	1	1	1	
32	28D-F5876-00	HOLDER, BRAKE HOSE 2	1	1	1	
33	95807-06012	BOLT, FLANGE	2	2	2	
34	28D-F1161-10	HOLDER, CABLE	1	1	1	
35	95807-06012	BOLT, FLANGE	1	1	1	

FIG. 20 FUEL TANK



FWD
28D1460-G200

REF. NO.	PART NO.	DESCRIPTION	28D7	28DD	28D8	REMARKS
1	51S-F4110-00	FUEL TANK COMP.		1		
	5TL-F4110-01	FUEL TANK COMP.	1	1		
2	28D-F4188-00	MOLD, FUEL TANK	1	1	1	
3	95807-06012	BOLT, FLANGE	2	2	2	
4	5TL-F4311-00	PIPE, FUEL 1	1	1	1	
5	5TL-F4312-10	PIPE 2	1	1	1	
6	90467-09006	CLIP	2	2	2	
7	90467-08075	CLIP	2	2	2	
8	4TT-F4500-00	FUEL COCK ASSY 1	1	1	1	
9	4X8-24512-00	.O-RING	1	1	1	
10	90149-06011	SCREW	2	2	2	
11	90202-05193	WASHER, PLATE	2	2	2	
12	4YY-F4610-00	CAP ASSY	1	1	1	

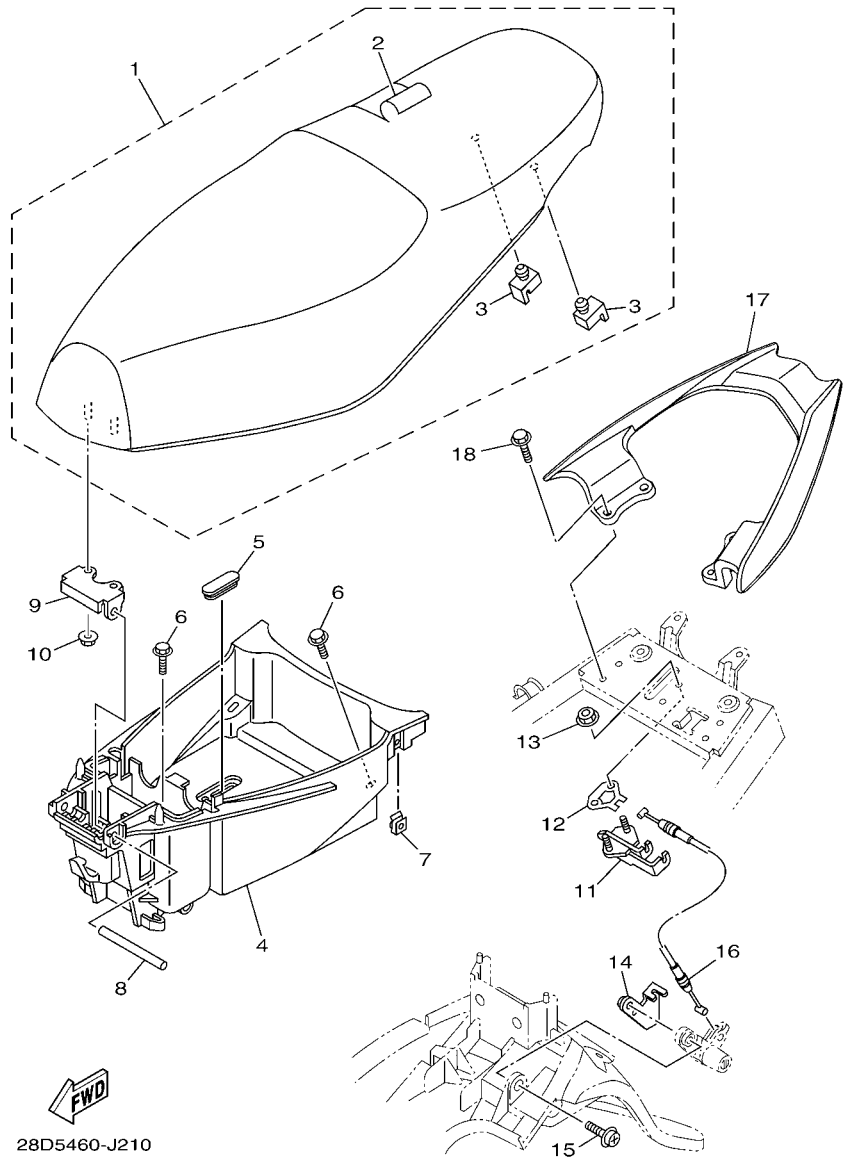
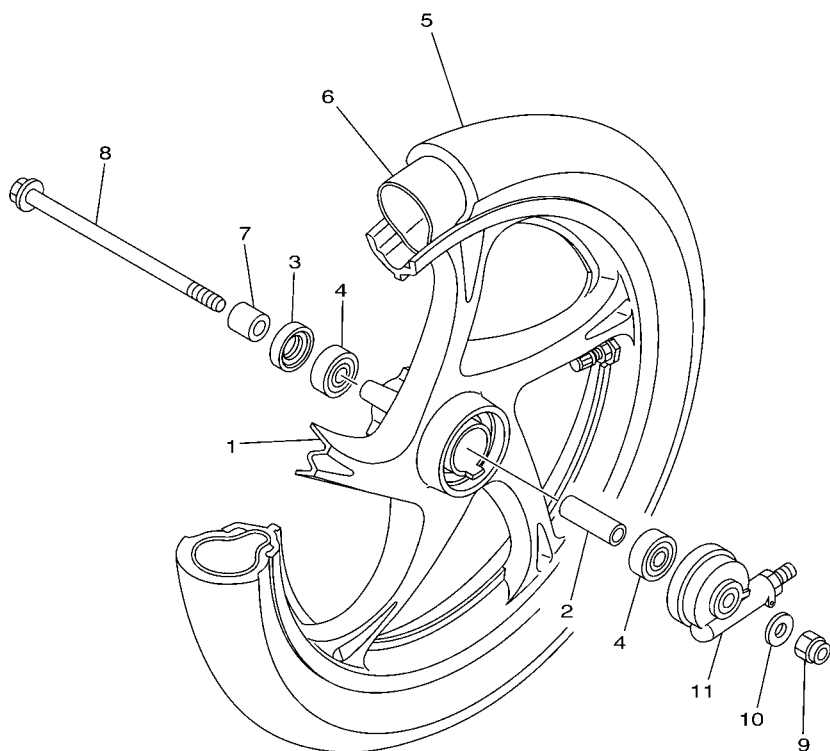


FIG. 21 SEAT

REF. NO.	PART NO.	DESCRIPTION	28D7	28D8	28D8	REMARKS
1	28D-F4730-01	DOUBLE SEAT ASSY	1	1	1	
2	28D-F470F-00	.SEAT COVER COMP.	1	1	1	
3	5TL-F4741-00	.PAD, SEAT	2	2	2	
4	5TL-F473R-00	BOX 1	1	1	1	
5	5TL-F6199-00	PLUG, BLIND	1	1	1	
6	90119-06044	BOLT, WITH WASHER	4	4	4	
7	90183-05807	NUT, SPRING	2	2	2	
8	5TL-F4727-00	PIN, SEAT FITTING	1	1	1	
9	5TL-F4726-00	HINGE, SEAT	1	1	1	
10	95707-06500	NUT, FLANGE	2	2	2	
11	5TL-F4780-00	SEAT LOCK ASSY	1	1	1	
12	5TL-F4792-00	PLATE	1	1	1	
13	95707-06500	NUT, FLANGE	2	2	2	
14	5TL-F117K-01	STAY, LOCK	1	1	1	
15	90159-06033	SCREW, WITH WASHER	1	1	1	
16	5TL-F478E-00	CABLE, SEAT LOCK	1	1	1	UR
	28D-F478E-00	CABLE, SEAT LOCK	1	1	1	UR
17	28D-F4773-10-35	HANDLE, SEAT	1	1	1	SL
18	95827-06020	BOLT, FLANGE	4	4	4	

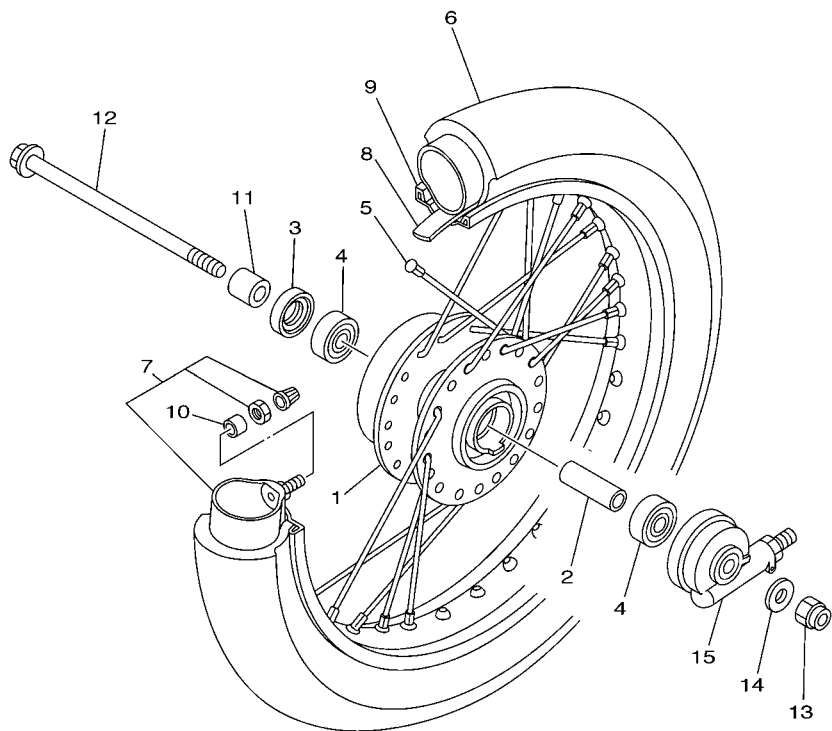
FIG. 22 FRONT WHEEL



REF. NO.	PART NO.	DESCRIPTION	28D7	28DD	28D8	REMARKS
1	5TL-F5168-A0-33	CAST WHEEL, FRONT	1	1		UR YB
	5TL-F5168-00-33	CAST WHEEL, FRONT (YB)	1	1		UR YB
	5WP-F5168-10-33	CAST WHEEL, FRONT	1	1		UR YB
2	90560-10292	SPACER	1	1		
3	93106-20816	OIL SEAL	1	1		
4	93306-300YF	BEARING	2	2		
5	94107-14802	TIRE (70/90-14M/C 34P NF59)	1	1		INOUE
6	94207-14802	TUBE (70/90-14M/C TR4)	1	1		INOUE
7	90387-10277	COLLAR	1	1		
8	3AY-F5181-01	AXLE, WHEEL	1	1		
9	90185-10811	NUT, SELF-LOCKING	1	1		
10	90201-101J1	WASHER, PLATE	1	1		
11	5TL-F5190-01	GEAR UNIT ASSY	1	1		

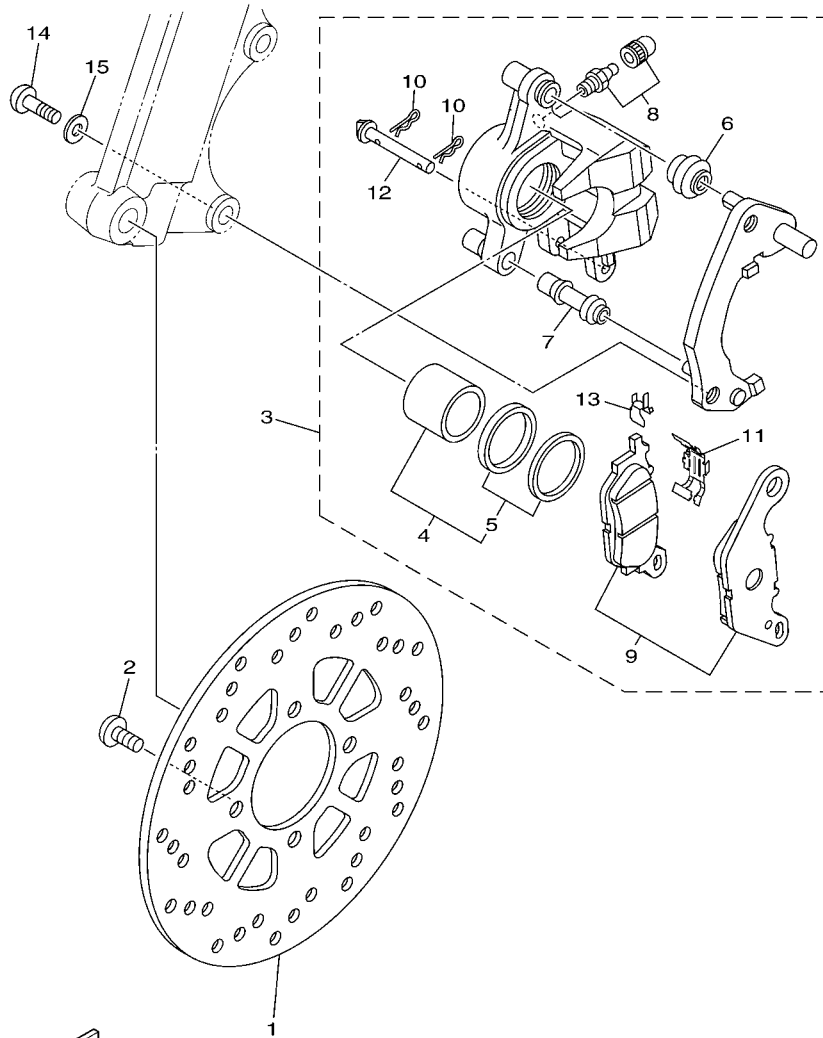

5WP4422-C220

FIG. 23 FRONT WHEEL 2



REF. NO.	PART NO.	DESCRIPTION	28D7	28DD	28D8	REMARKS
1	5TP-F5111-01-35	HUB, FRONT			1	SL
2	90560-10292	SPACER			1	
3	93106-20816	OIL SEAL			1	
4	93306-300YF	BEARING			2	
5	5TL-F5104-01	SPOKE SET, FRONT			1	
6	94107-14802	TIRE (70/90-14M/C 34P NF59)			1	INOUE
7	94207-14802	TUBE (70/90-14M/C TR4)			1	INOUE
8	94307-14802	BAND, RIM (22.0-14)			1	INOUE
9	94414-14801	RIM (1.40-14)			1	
10	90387-08815	COLLAR			1	
11	90387-10277	COLLAR			1	
12	3AY-F5181-01	AXLE, WHEEL			1	
13	90185-10811	NUT, SELF-LOCKING			1	
14	90201-101J1	WASHER, PLATE			1	
15	5TL-F5190-01	GEAR UNIT ASSY			1	

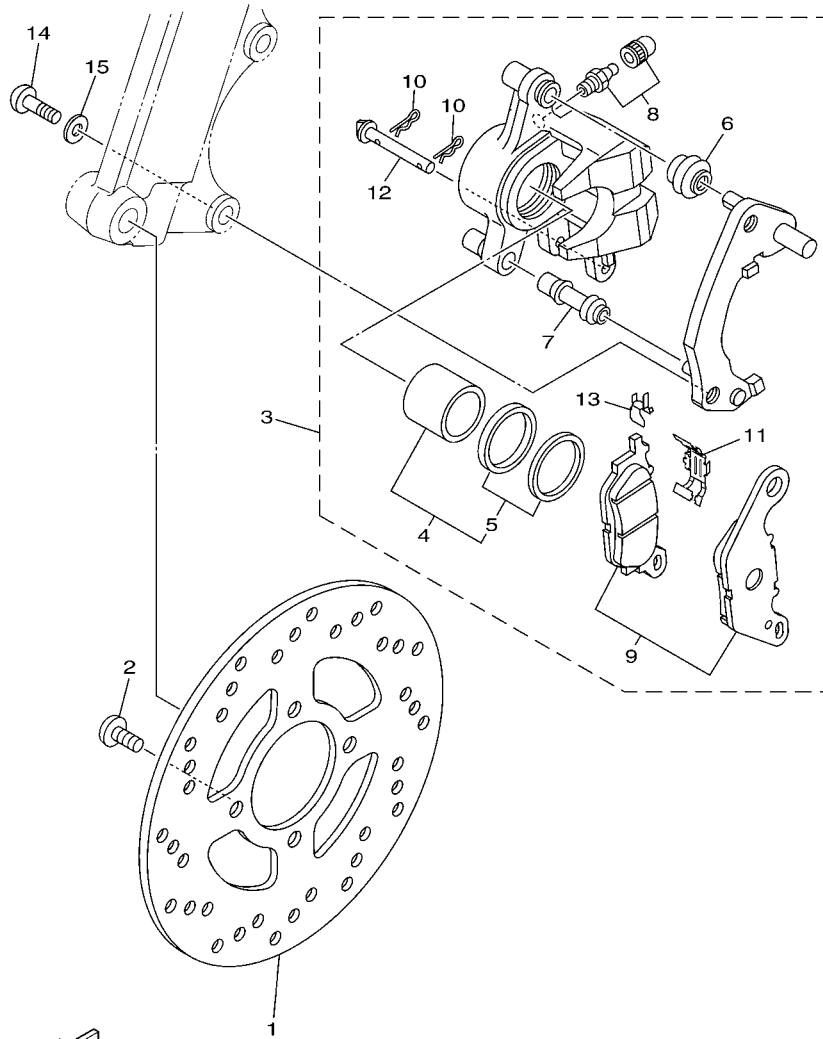

5TL1460-C220



28D5460-J240

FIG. 24 FRONT BRAKE CALIPER

REF. NO.	PART NO.	DESCRIPTION	28D7	28DD	28D8	REMARKS
1	5TL-F582U-21	DISK, BRAKE (RIGHT)	1	1		
2	90111-08815	BOLT,HEX. SOCKET BUTTON	4	4		
3	44D-F580U-00	CALIPER ASSY (RIGHT)	1	1		
4	5P0-W0057-00	.PISTON ASSY, CALIPER	1	1		
5	5YP-W0047-50	..CALIPER SEAL KIT	1	1		
6	5YP-F5917-00	.BOOT, CALIPER	1	1		
7	5YP-F5937-00	.BOOT 2	1	1		
8	4C9-W0048-00	.BLEED SCREW KIT	1	1		
9	3C1-W0045-10	.BRAKE PAD KIT	1	1		
10	5YP-F5925-01	.CLIP	2	2		
11	5P0-F5919-00	.SUPPORT, PAD	1	1		
12	5YP-F5924-00	.PIN, PAD	1	1		
13	5YP-F5939-00	.CLIP, PAD	1	1		
14	90149-10804	SCREW	2	2		
15	92902-10200	WASHER	2	2		



FWD
28D5460-J250

FIG. 25 FRONT BRAKE CALIPER 2

REF. NO.	PART NO.	DESCRIPTION	28D7	28DD	28D8	REMARKS
1	5TL-F582U-30	DISK, BRAKE (RIGHT)			1	
2	90111-08815	BOLT,HEX. SOCKET BUTTON			4	
3	5D9-F580U-01	CALIPER ASSY (RIGHT)			1	
4	5P0-W0057-00	.PISTON ASSY, CALIPER			1	
5	5YP-W0047-50	..CALIPER SEAL KIT			1	
6	5YP-F5917-00	.BOOT, CALIPER			1	
7	5YP-F5937-00	.BOOT 2			1	
8	4C9-W0048-00	.BLEED SCREW KIT			1	
9	5D9-W0045-01	.BRAKE PAD KIT			1	
10	5YP-F5925-01	.CLIP			2	
11	5P0-F5919-00	.SUPPORT, PAD			1	
12	5YP-F5924-00	.PIN, PAD			1	
13	5YP-F5939-00	.CLIP, PAD			1	
14	90149-10804	SCREW			2	
15	92902-10200	WASHER			2	

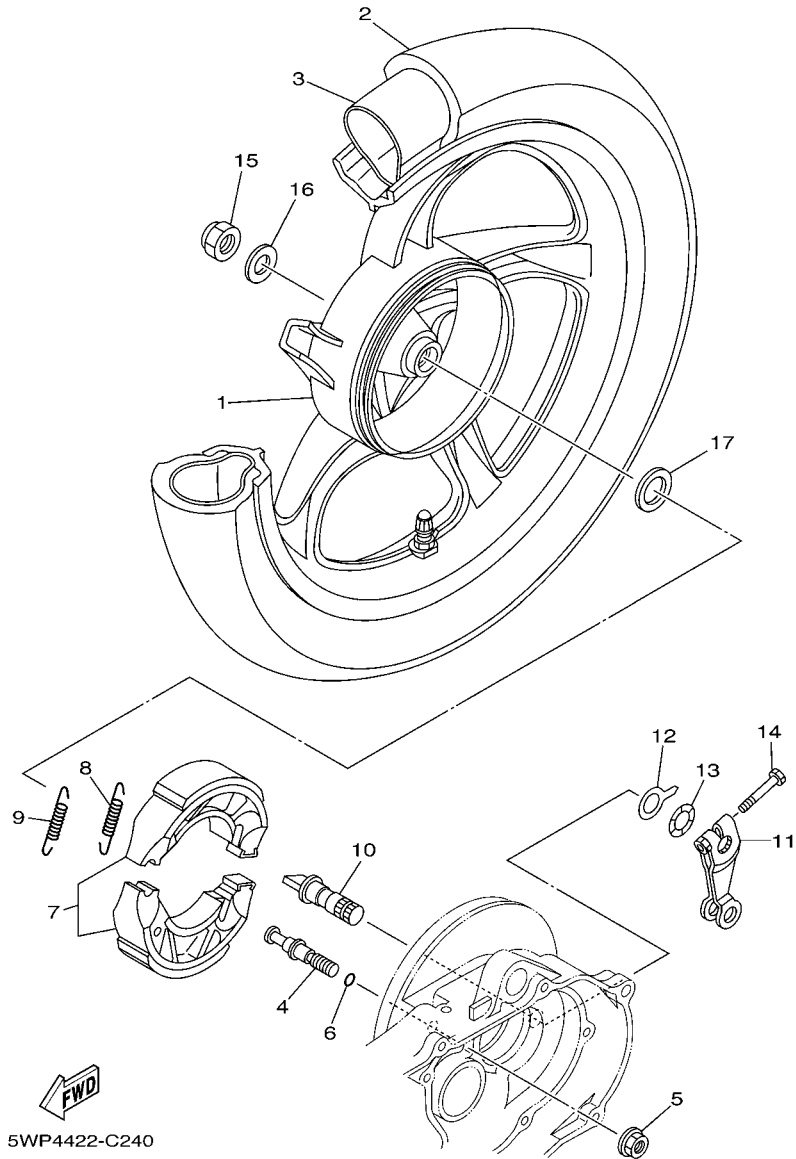
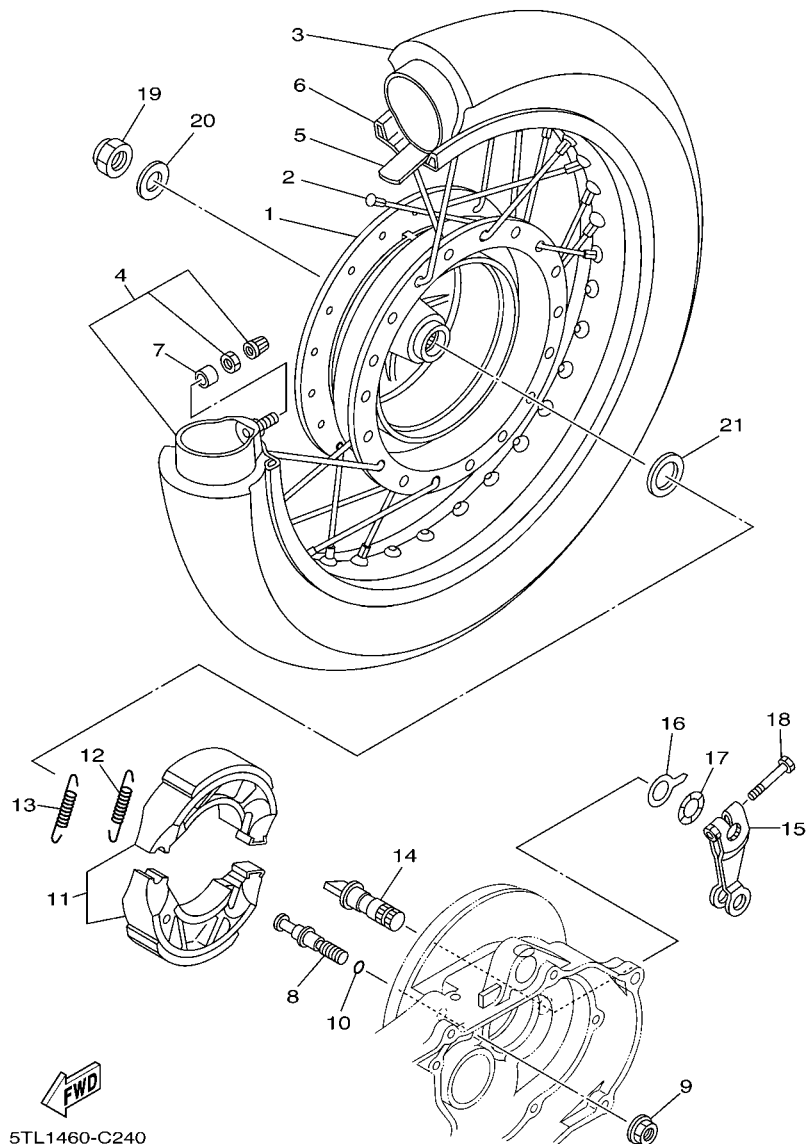


FIG. 26 REAR WHEEL

REF. NO.	PART NO.	DESCRIPTION	28D7	28DD	28D8	REMARKS
1	5TL-F5338-00-33	CAST WHEEL, REAR	1	1		UR YB
	5TL-F5338-A0-33	CAST WHEEL, REAR	1			UR YB
2	94108-14802	TIRE (80/90-14M/C 40P NR76)	1	1		INOUE
3	94208-14802	TUBE (80/90-14M/C TR4)	1	1		INOUE
4	5LW-F5326-01	PIN, PIVOT	1	1		
5	95707-10500	NUT, FLANGE	1	1		
6	93210-07802	O-RING	1	1		
7	5MX-F530K-00	BRAKE SHOE SET	1	1		
8	90506-12001	SPRING, TENSION	1	1		
9	90506-15001	SPRING, TENSION	1	1		
10	5MX-F5351-00	CAMSHAFT	1	1		
11	5LW-F5355-00	LEVER, CAMSHAFT	1	1		
12	5MX-F533A-00	PLATE, INDICATOR	1	1		
13	90206-14093	WASHER, WAVE	1	1		
14	90101-06278	BOLT	1	1		
15	90185-14814	NUT, SELF-LOCKING	1	1		
16	90201-14016	WASHER, PLATE	1	1		
17	90201-20276	WASHER, PLATE (T=1.0)	1	1		

FIG. 27 REAR WHEEL 2



REF. NO.	PART NO.	DESCRIPTION	28D7	28DD	28D8	REMARKS
1	5TL-F5311-00	HUB, REAR			1	
2	28D-WF53H-10	SPOKE SET, REAR			1	
3	94108-14802	TIRE (80/90-14M/C 40P NR76)			1	INOUE
4	94208-14802	TUBE (80/90-14M/C TR4)			1	INOUE
5	94307-14802	BAND, RIM (22.0-14)			1	INOUE
6	94416-14801	RIM (1.60-14)			1	
7	90387-08815	COLLAR			1	
8	5LW-F5326-01	PIN, PIVOT			1	
9	95707-10500	NUT, FLANGE			1	
10	93210-07802	O-RING			1	
11	5MX-F530K-00	BRAKE SHOE SET			1	
12	90506-12001	SPRING, TENSION			1	
13	90506-15001	SPRING, TENSION			1	
14	5MX-F5351-00	CAMSHAFT			1	
15	5LW-F5355-00	LEVER, CAMSHAFT			1	
16	5MX-F533A-00	PLATE, INDICATOR			1	
17	90206-14093	WASHER, WAVE			1	
18	90101-06278	BOLT			1	
19	90185-14814	NUT, SELF-LOCKING			1	
20	90201-14016	WASHER, PLATE			1	
21	90201-20276	WASHER, PLATE (T=1.0)			1	

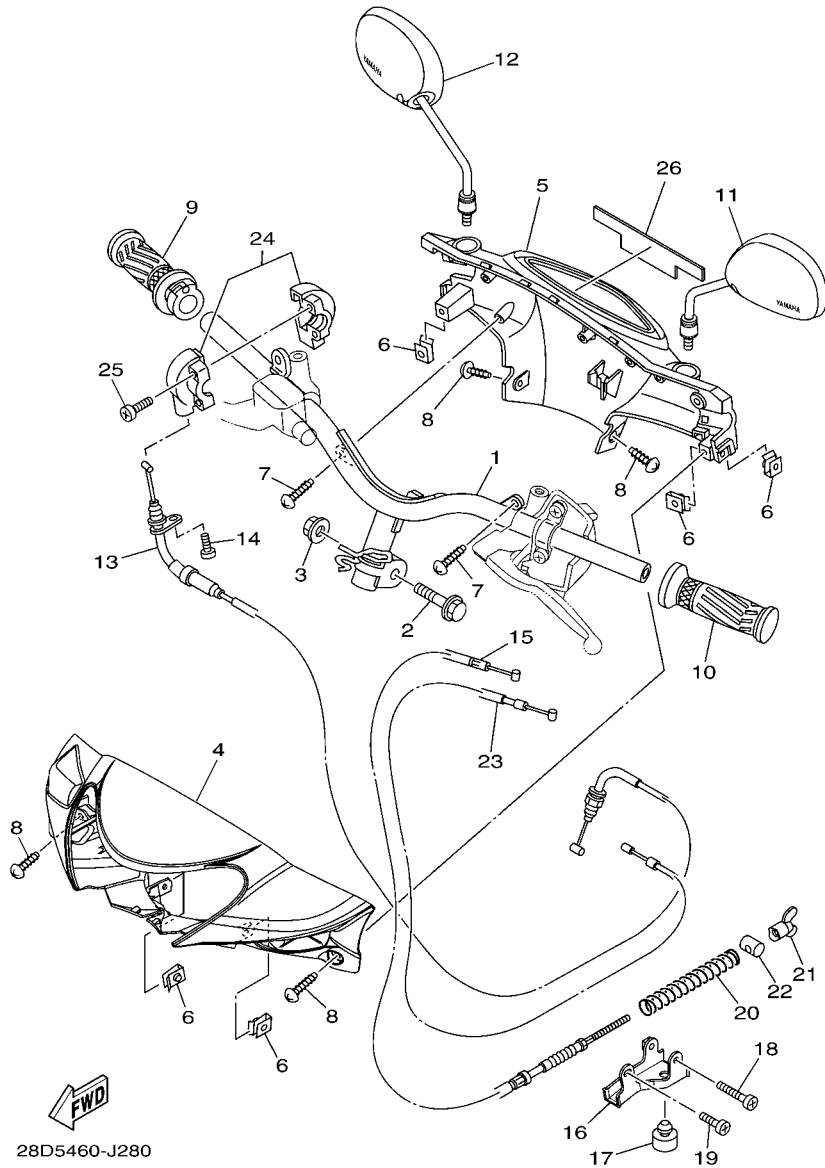
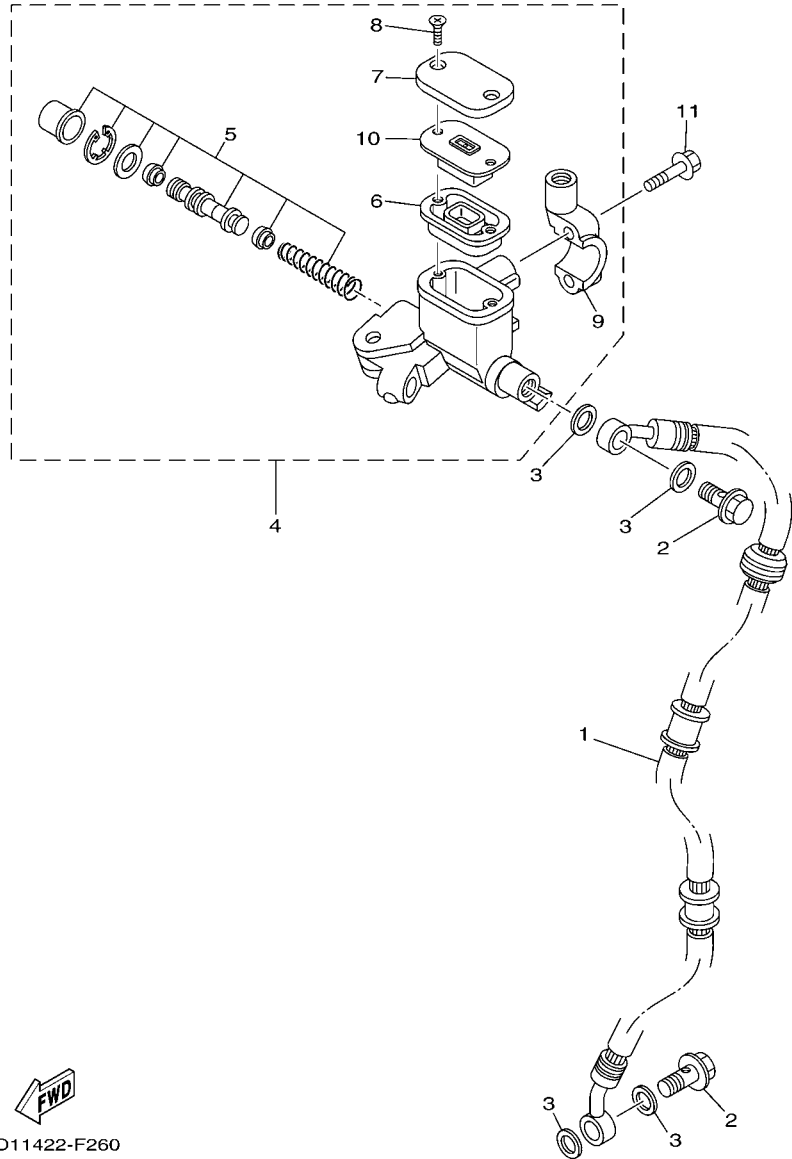


FIG. 28 STEERING HANDLE & CABLE

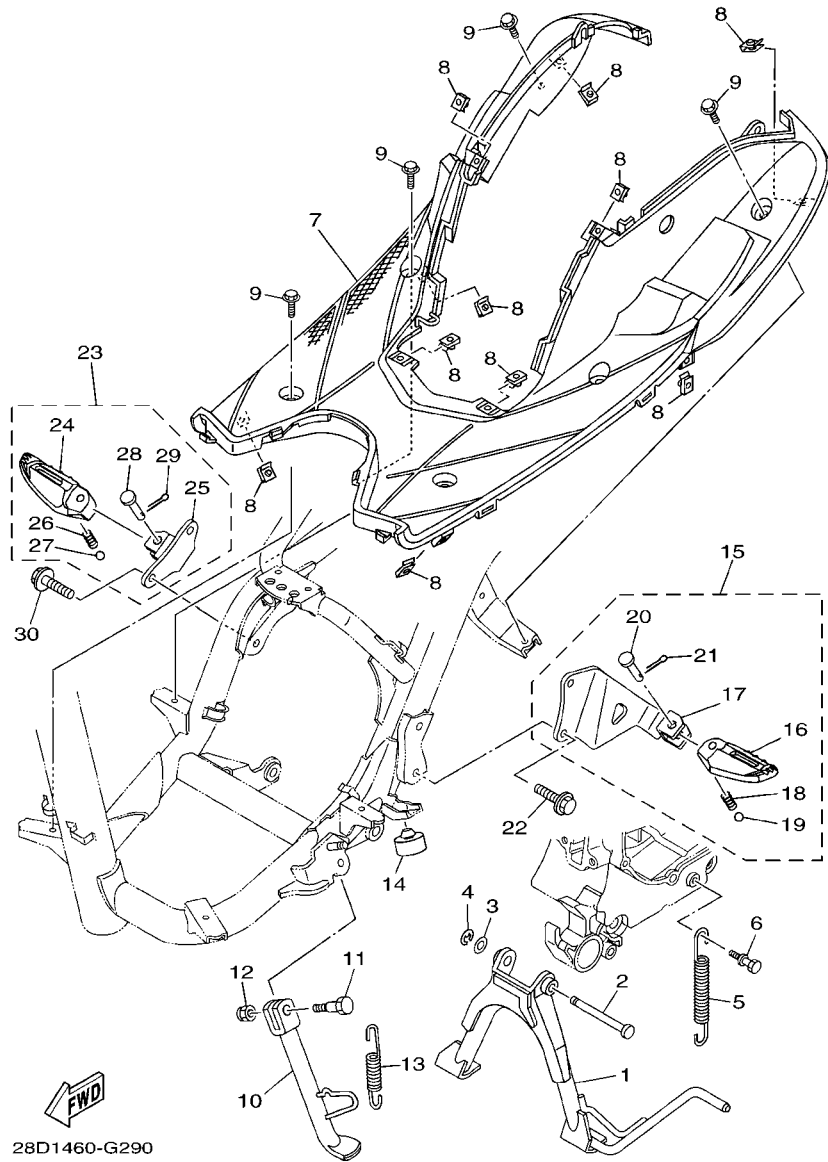
REF. NO.	PART NO.	DESCRIPTION	28D7	28DD	28D8	REMARKS
1	28D-F6110-00	HANDLE COMP.	1	1	1	
2	90105-10036	BOLT, FLANGE	1	1	1	
3	90185-10808	NUT, SELF-LOCKING	1	1	1	
4	28D-F6143-00-P5	COVER, HAND UPPER 1	1	1		UR FOR RSM2
	28D-F6143-00-P0	COVER, HAND UPPER 1	1	1		UR FOR DRMK
	28D-F6143-00-P3	COVER, HAND UPPER 1	1			UR FOR BMC
	28D-F6143-00-P4	COVER, HAND UPPER 1	1			UR FOR LGM6
	28D-F6143-00-GE	COVER, HAND UPPER 1	1	1		UR FOR SW
	51S-F6143-00-P5	COVER, HAND UPPER 1		1		UR FOR RSM2
	51S-F6143-00-P1	COVER, HAND UPPER 1		1		UR FOR DRMK
	51S-F6143-00-P3	COVER, HAND UPPER 1		1		UR FOR BMC
	51S-F6143-00-P4	COVER, HAND UPPER 1		1		UR FOR LGM6
	51S-F6143-00-GE	COVER, HAND UPPER 1		1		UR FOR SW
5	5TL-F6145-00	COVER, HAND UPPER 2	1	1	1	
6	90183-05807	NUT, SPRING	5	5	5	
7	97707-50016	SCREW, TRUSS HEAD TAPPING	2	2	2	
8	97707-50012	SCREW, TRUSS HEAD TAPPING	4	4	4	
9	5TL-F6240-00	GRIP ASSY	1	1	1	
10	5TL-F6241-00	GRIP	1	1	1	
11	2P2-F6280-11	REAR VIEW MIRROR ASSY (LEFT)	1	1	1	
12	2P2-F6290-11	REAR VIEW MIRROR ASSY (RIGHT)	1	1	1	
13	14D-F6311-00	CABLE, THROTTLE 1	1	1	1	UR
	28D-F6311-00	CABLE, THROTTLE 1	1	1	1	UR
14	98507-05016	SCREW, PAN HEAD	1	1	1	
15	14D-F6351-01	CABLE, BRAKE	1	1	1	UR
	28D-F6351-00	CABLE, BRAKE	1	1	1	UR
16	28D-F637G-00	HOLDER, WIRE	1	1	1	




4D11422-F260

FIG. 29 FRONT MASTER CYLINDER

REF. NO.	PART NO.	DESCRIPTION	28D7	28DD	28D8	REMARKS
1	14D-F5872-00	HOSE, BRAKE 1	1	1	1	
2	90401-10812	BOLT, UNION	2	2	2	
3	90201-10118	WASHER, PLATE	4	4	4	
4	5P0-F583T-03	MASTER CYLINDER ASSY	1	1	1	
5	5P0-W0041-00	.CYLINDER KIT, MASTER	1	1	1	
6	5P0-F5854-00	.DIAPHRAGM, RESERVOIR	1	1	1	
7	5P0-F5852-00	.CAP, RESERVOIR	1	1	1	
8	36Y-2589H-00	.SCREW	2	2	2	
9	5TL-F5867-01	.BRACKET, MASTER CYLINDER	1	1	1	
10	5P0-F5855-00	.BUSH,DIAPHRAGM	1	1	1	
11	91317-06025	BOLT	2	2	2	



28D1460-G290

FIG. 30 STAND & FOOTREST

REF. NO.	PART NO.	DESCRIPTION	28D7	28DD	28D8	REMARKS
1	5TL-F7111-01	STAND, MAIN	1	1	1	
2	90249-10002	PIN	1	1	1	
3	90201-10119	WASHER, PLATE	1	1	1	
4	99001-08600	CIRCLIP	1	1	1	
5	90506-35002	SPRING, TENSION	1	1	1	
6	5LW-F7254-00	HOOK	1	1	1	
7	5TL-F7481-00	BOARD, FOOTREST	1	1	1	
8	90183-05807	NUT, SPRING	10	10	10	
9	90119-06044	BOLT, WITH WASHER	6	6	6	
10	28D-F7311-00	STAND, SIDE	1	1	1	
11	90109-08881	BOLT	1	1	1	
12	90185-08009	NUT, SELF-LOCKING	1	1	1	
13	90506-20514	SPRING, TENSION	1	1	1	
14	4YY-F7114-00	STOPPER, MAIN STAND	1	1	1	
15	28D-F7430-00	REAR FOOTREST ASSY 1	1	1	1	
16	14D-F7431-00	.FOOTREST, REAR 1	1	1	1	
17	28D-F7432-00	.BRACKET 1	1	1	1	
18	90501-12743	.SPRING, COMPRESSION	1	1	1	
19	93501-04830	.BALL	1	1	1	
20	91701-08035	.PIN	1	1	1	
21	91401-25015	.PIN, COTTER	1	1	1	
22	95807-08016	BOLT, FLANGE	2	2	2	
23	28D-F7440-00	REAR FOOTREST ASSY 2	1	1	1	
24	14D-F7441-00	.FOOTREST, REAR 2	1	1	1	
25	28D-F7442-00	.BRACKET 2	1	1	1	
26	90501-12743	.SPRING, COMPRESSION	1	1	1	
27	93501-04830	.BALL	1	1	1	

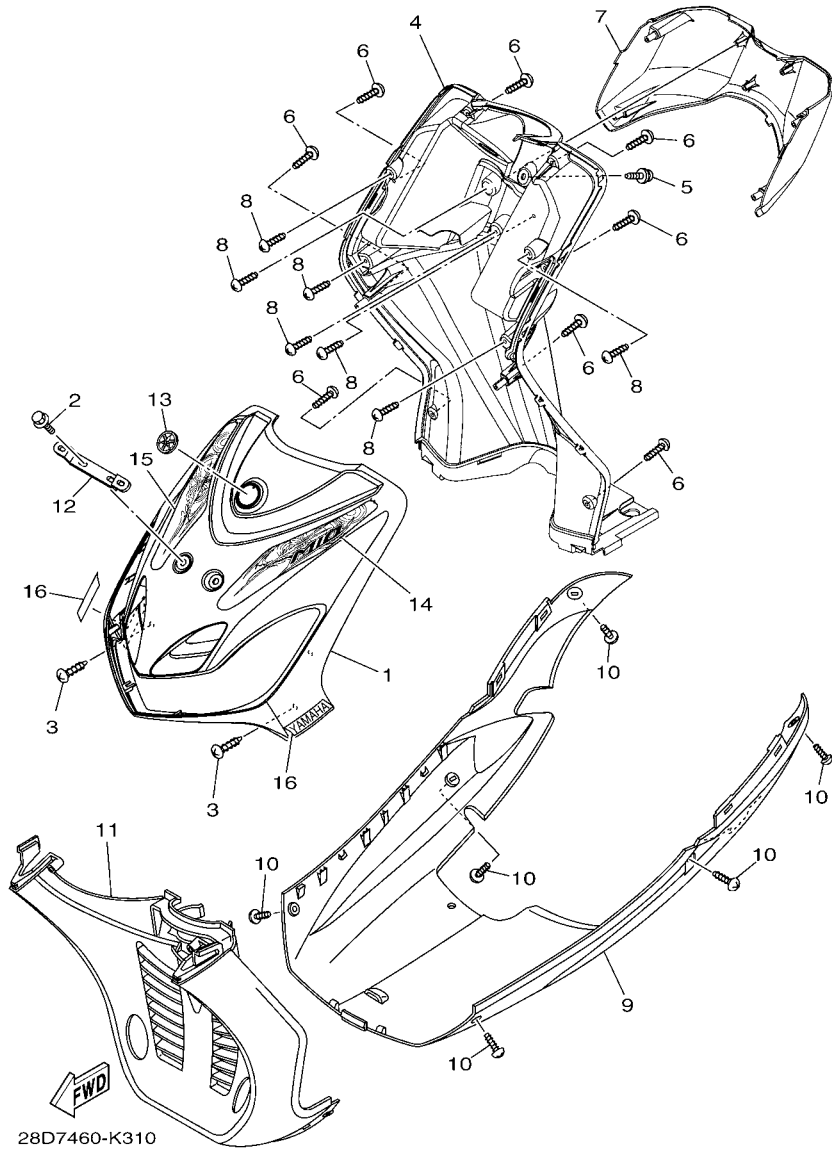


FIG. 31 LEG SHIELD

REF. NO.	PART NO.	DESCRIPTION	28D7	28DD	28D8	REMARKS
1	28D-F8311-00-P5	LEG SHIELD 1	1		1	UR FOR RSM2
	28D-F8311-00-P0	LEG SHIELD 1	1		1	UR FOR DRMK
	28D-F8311-00-P3	LEG SHIELD 1	1			UR FOR BMC
	28D-F8311-00-P4	LEG SHIELD 1	1			UR FOR LGM6
	28D-F8311-00-GE	LEG SHIELD 1	1		1	UR FOR SW
<hr/>						
	51S-F8311-00-P5	LEG SHIELD 1			1	UR FOR RSM2
	51S-F8311-00-P1	LEG SHIELD 1			1	UR FOR DRMK
	51S-F8311-00-P3	LEG SHIELD 1			1	UR FOR BMC
	51S-F8311-00-P4	LEG SHIELD 1			1	UR FOR LGM6
	51S-F8311-00-GE	LEG SHIELD 1			1	UR FOR SW
<hr/>						
2	95807-06025	BOLT, FLANGE	2	2	2	
3	97707-50016	SCREW, TRUSS HEAD TAPPING	2	2	2	
4	28D-F8312-00	LEG SHIELD 2	1	1	1	
5	90159-06817	SCREW, WITH WASHER	1	1	1	
6	97707-50016	SCREW, TRUSS HEAD TAPPING	8	8	8	
<hr/>						
7	28D-F836K-01	PANEL, INNER 1	1	1	1	
8	97707-50016	SCREW, TRUSS HEAD TAPPING	7	7	7	
9	5TL-F8385-90	COVER, UNDER	1	1	1	
10	97707-50016	SCREW, TRUSS HEAD TAPPING	6	6	6	
11	5TL-F1552-01	FENDER, INNER	1	1	1	
<hr/>						
12	28D-H454E-00	BRACKET, NUMBER PLATE	1	1	1	
13	5TL-F3108-00	EMBLEM	1	1	1	
14	28D-F8391-N0	GRAPHIC SET 1	1	1	1	UR FOR RSM2
	28D-F8391-P0	GRAPHIC SET 1	1	1	1	UR FOR DRMK
	28D-F8391-R0	GRAPHIC SET 1	1	1		UR FOR BMC
	28D-F8391-T0	GRAPHIC SET 1			1	UR FOR SW
	28D-F8391-S0	GRAPHIC SET 1	1	1		UR FOR LGM6

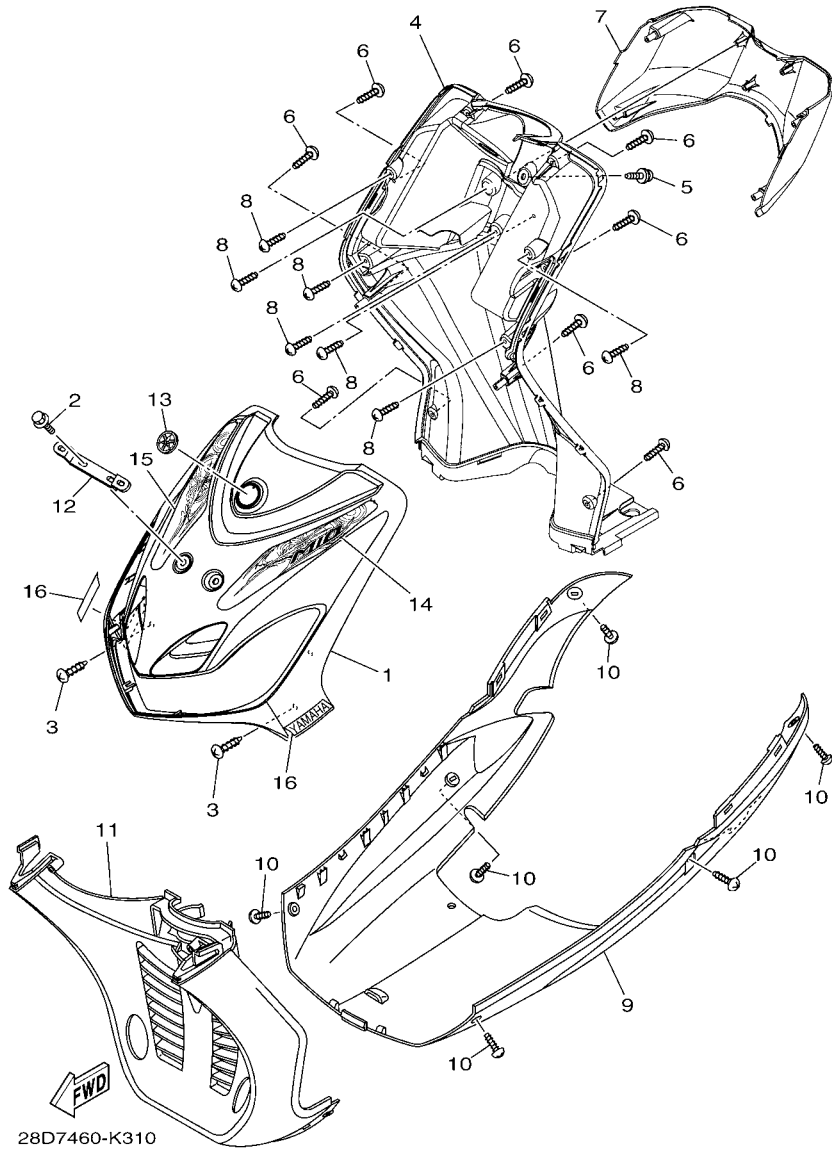
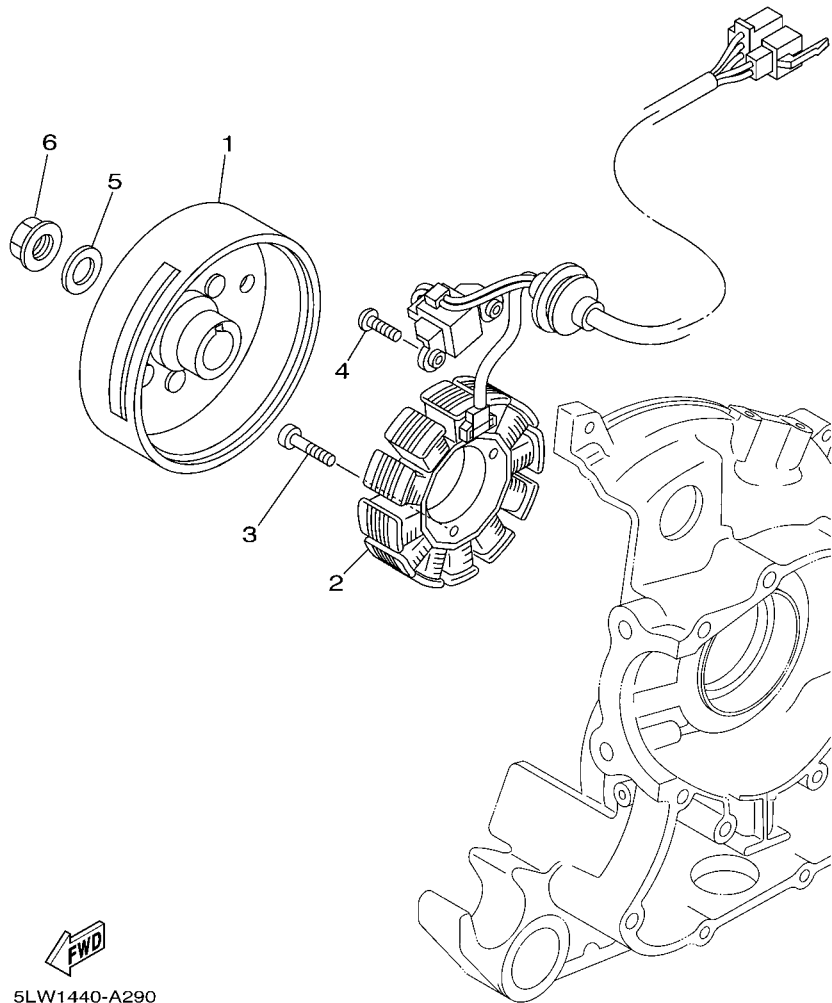


FIG. 31 LEG SHIELD

REF. NO.	PART NO.	DESCRIPTION	28D7	28DD	28D8	REMARKS
14	28D-F8391-T0	GRAPHIC SET 1	1	1		UR FOR SW
15	28D-F8392-N0	GRAPHIC SET 2	1	1	1	UR FOR RSM2
	28D-F8392-P0	GRAPHIC SET 2	1	1	1	UR FOR DRMK
	28D-F8392-R0	GRAPHIC SET 2	1	1		UR FOR BMC
	28D-F8392-T0	GRAPHIC SET 2			1	UR FOR SW

	28D-F8392-S0	GRAPHIC SET 2	1	1		UR FOR LGM6
	28D-F8392-T0	GRAPHIC SET 2	1	1		UR FOR SW
16	3S0-F153E-20	EMBLEM, YAMAHA	2	2	2	FOR RSM2
	3S0-F153E-30	EMBLEM, YAMAHA	2	2	2	FOR DRMK,BMC,LGM6
	3S0-F153E-00	EMBLEM, YAMAHA	2	2	2	FOR SW

FIG. 32 GENERATOR



5LW1440-A290

REF. NO.	PART NO.	DESCRIPTION	28D7	28DD	28D8	REMARKS
1	5TL-H1450-10	ROTOR ASSY	1		1	UR
	5TL-H1450-01	ROTOR ASSY	1		1	UR
	5TL-H1450-02	ROTOR ASSY		1		
2	5TL-H1410-11	STATOR ASSY	1	1	1	
3	91317-06020	BOLT	3	3	3	
4	98507-06016	SCREW, PAN HEAD	2	2	2	
5	90201-12688	WASHER, PLATE	1	1	1	
6	90179-12248	NUT	1	1	1	

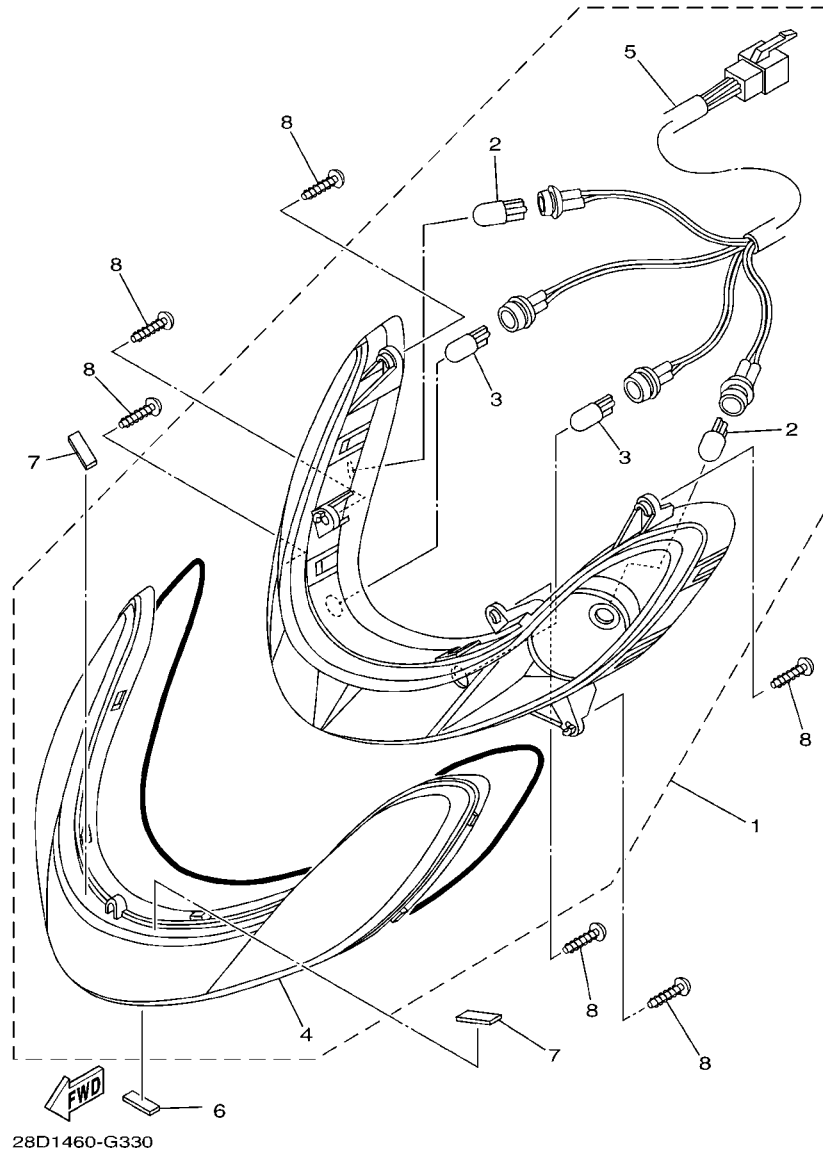
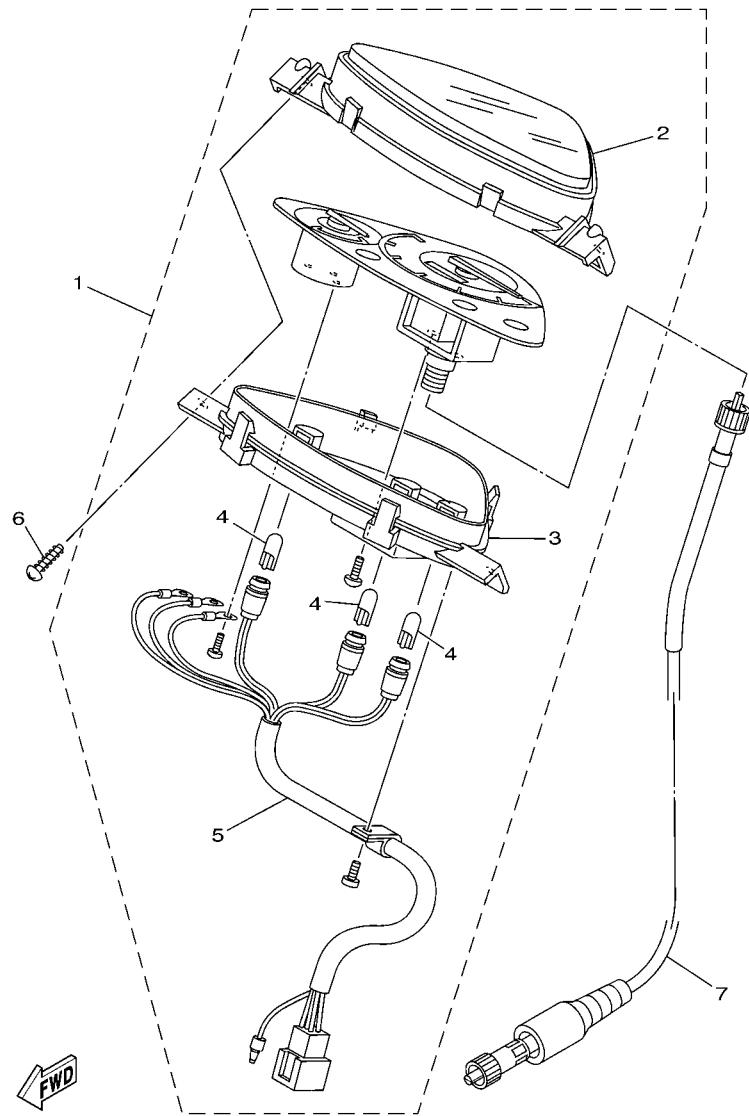


FIG. 34 FLASHER LIGHT

REF. NO.	PART NO.	DESCRIPTION	28D7	28DD	28D8	REMARKS
			1	1	1	
1	28D-H3301-10	FRONT FLASHER LIGHT ASSY 1	1	1	1	
2	5HV-H3311-00	.BULB (12V-10W) AMBER	2	2	2	
3	5YW-H4714-00	.BULB (12V-5W)	2	2	2	
4	28D-H3312-00	.LENS, FLASHER	1	1	1	
5	28D-H331E-00	.CORD ASSY	1	1	1	
6	14D-F834E-00	DAMPER 3	1	1	1	
7	28D-F834E-00	DAMPER 3	2	2	2	
8	97707-50016	SCREW, TRUSS HEAD TAPPING	6	6	6	

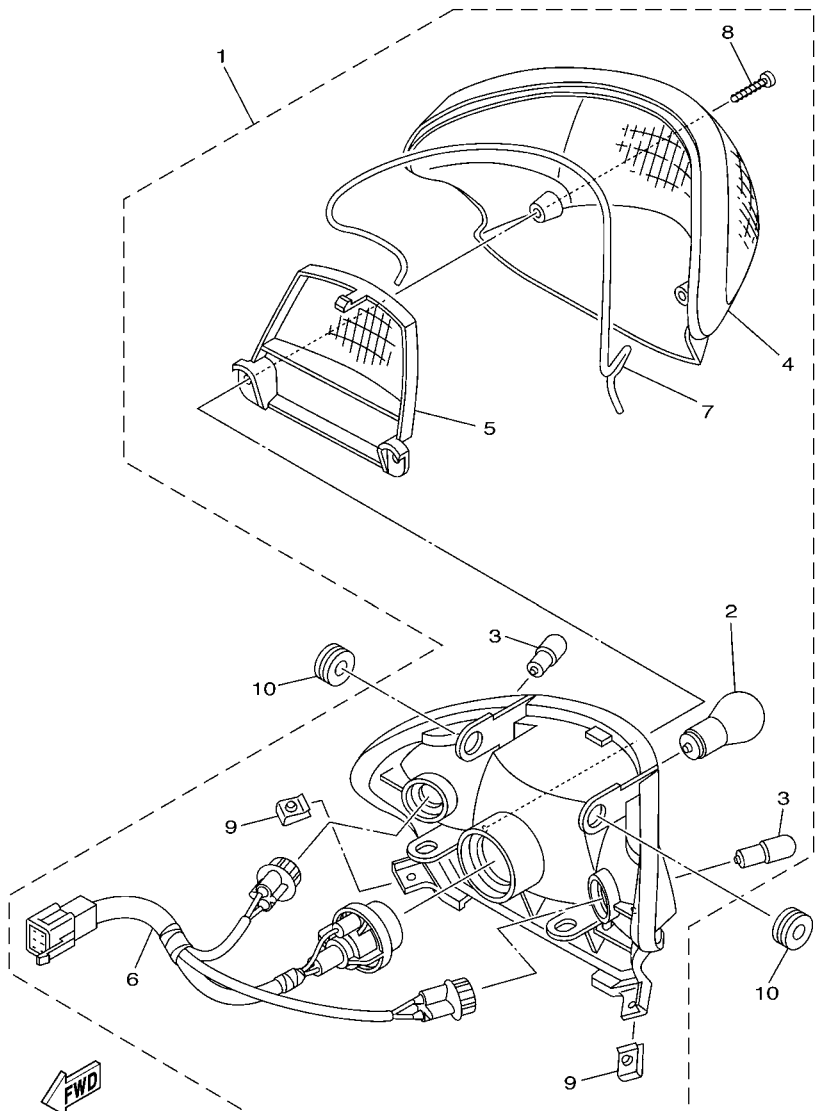


5TL1460-C320

FIG. 35 METER

REF. NO.	PART NO.	DESCRIPTION	28D7	28DD	28D8	REMARKS
1	28D-H3510-00	SPEEDOMETER ASSY	1	1	1	
2	5TL-H3511-10	.LENS, SPEEDOMETER	1	1	1	
3	5TL-H353F-10	.CASE, METER LOWER	1	1	1	
4	5TL-H3517-00	.BULB (T-6.5 12V-1.7W)	3	3	3	
5	5TL-H3509-10	.SOCKET CORD ASSY	1	1	1	
6	97707-50016	SCREW, TRUSS HEAD TAPPING	3	3	3	
7	5TL-H3550-00	SPEEDOMETER CABLE ASSY	1	1	1	UR
	28D-H3550-00	SPEEDOMETER CABLE ASSY	1	1	1	UR

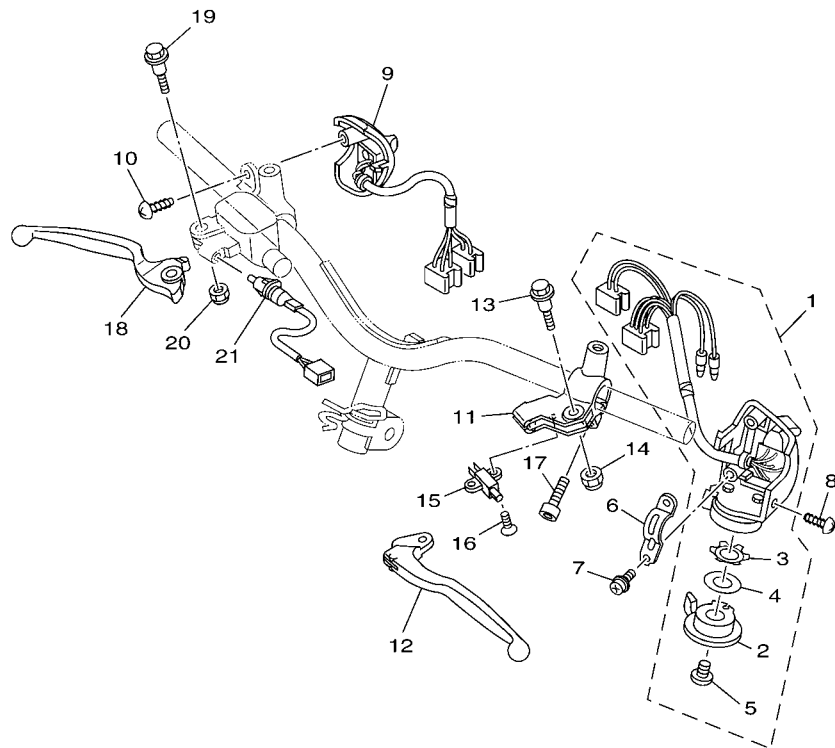
FIG. 37 TAILLIGHT



5TL1460-C340

REF. NO.	PART NO.	DESCRIPTION	28D7	28DD	28D8	REMARKS
1	28D-H4710-10	TAILLIGHT UNIT ASSY	1	1	1	
2	4AC-H4714-00	.BULB (12V-21/5W)	1	1	1	
3	5HV-H3311-00	.BULB (12V-10W) AMBER	2	2	2	
4	5TL-H4743-00	.LENS, LICENCE LIGHT	1	1	1	
5	5TL-H4721-00	.LENS, TAILLIGHT	1	1	1	
6	5TL-H4735-00	.SOCKET CORD ASSY	1	1	1	
7	5TL-H4723-00	.GASKET, TAIL LENS	1	1	1	
8	9770L-40620	.SCREW, TAPPING	2	2	2	
9	90183-05807	.NUT, SPRING	2	2	2	
10	90480-13428	GROMMET	2	2	2	

FIG. 38 HANDLE SWITCH & LEVER



28DA460-H350

REF. NO.	PART NO.	DESCRIPTION	28D7	28DD	28D8	REMARKS
1	14D-H3973-01	SWITCH, HANDLE 3	1	1	1	
2	5TL-H3941-10	.LEVER, STARTER	1	1	1	
3	5TL-H3947-10	.SPRING	1	1	1	
4	5TL-H397X-10	.SPACER	1	1	1	
5	9850L-06008	.SCREW, PAN HEAD	1	1	1	
6	5TL-H3955-20	BRACKET 1	1	1	1	
7	97607-05216	SCREW,WITH WASHER	2	2	2	
8	97707-50012	SCREW, TRUSS HEAD TAPPING	1	1	1	
9	5TL-H3975-31	SWITCH, HANDLE 2	1	1	1	
10	97707-50016	SCREW, TRUSS HEAD TAPPING	1	1	1	
11	5TL-H2911-20	HOLDER, LEVER 1	1	1	1	
12	5TL-H3912-20	LEVER 1	1	1	1	
13	90109-06814	BOLT	1	1	1	
14	95602-06100	NUT, U	1	1	1	
15	5TL-H3980-10	FRONT STOP SWITCH ASSY	1	1	1	
16	9870M-03008	SCREW, FLAT HEAD	1	1	1	
17	91317-06020	BOLT	1	1	1	
18	5TL-H3922-00	LEVER 2	1	1	1	
19	90109-06577	BOLT	1	1	1	
20	95602-06100	NUT, U	1	1	1	
21	5TL-H3980-20	FRONT STOP SWITCH ASSY	1	1	1	

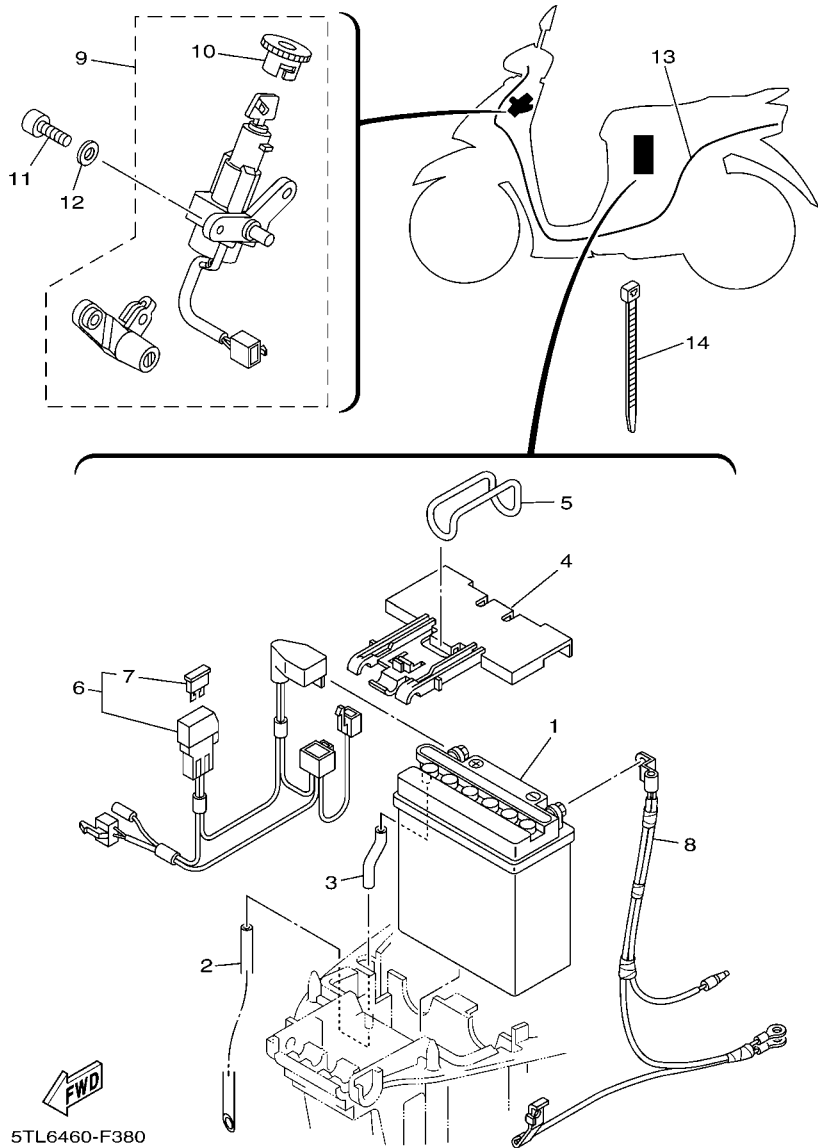


FIG. 39 ELECTRICAL 1

REF. NO.	PART NO.	DESCRIPTION	28D7	28DD	28D8	REMARKS
1	3AY-H2110-20	BATTERY ASSY (YUASA YB5L-B)	1	1	1	UR
	3AY-H2110-30	BATTERY ASSY (GS GM5Z-3B)	1	1	1	UR
2	90445-08815	HOSE (L550)	1	1	1	
3	90445-08819	HOSE (L40)	1	1	1	
4	5TL-H2129-00	COVER, BATTERY	1	1	1	
5	5TL-H2131-00	BAND, BATTERY	1	1	1	
6	5TL-H2150-00	FUSE HOLDER ASSY	1	1	1	
7	5TL-H2151-00	.FUSE (10A)	1	1	1	
8	28D-H2116-00	WIRE, MINUS LEAD	1	1	1	
9	5TL-XH250-22	MAIN SW. STRG. LOCK SUB ASSY	1	1	1	
10	5TP-H2552-00	.CAP, SWITCH	1	1	1	
11	91317-06014	BOLT	2	2	2	
12	92907-06600	WASHER, PLATE	2	2	2	
13	28D-H2590-00	WIRE HARNESS ASSY	1	1	1	
14	90464-70800	CLAMP	1	1	1	

NUMERICAL INDEX

PART NO.	REF. NO.	PART NO.	REF. NO.	PART NO.	REF. NO.	PART NO.	REF. NO.	PART NO.	REF. NO.	PART NO.	REF. NO.
5LW-11133-10	1 - 2	5MX-E1636-00	2 - 12	5LW-E3769-00	10 - 35	5TL-E5150-11	10 - 1	5TL-E6620-02	13 - 23	5TL-F1721-00-P4	17 - 3
5LW-11134-10	1 - 3	5MX-E1638-00	2 - 12	4D0-E4133-00	8 - 4	5VV-E5150-11	10 - 1	5TL-E7211-00	14 - 7	51S-F1721-00-P5	17 - 3
33M-12117-01	3 - 7	5MX-E1651-10	2 - 5	5TL-E4135-00	8 - 34	5WP-E5150-12	10 - 1	5TL-E7410-10	14 - 1	5TL-F1721-00-P8	17 - 3
22F-12159-00	3 - 9	5MX-E1681-10	2 - 3	14D-E414G-00	8 - 10	51S-E5150-30	10 - 1	5TL-E7421-10	14 - 6	5TL-F1721-00-P9	17 - 3
663-14159-00	8 - 17	5LW-E2111-00	3 - 1	5TL-E4170-00	8 - 27	5TL-E5150-31	10 - 1	5TL-E7465-00	13 - 27	5TL-F1721-00-PA	17 - 3
4JH-14160-00	8 - 14	28D-E2113-00	3 - 5	5TL-E4171-00	8 - 33	28D-E5191-00	11 - 7	5TL-E7465-10	13 - 28	51S-F1731-00-GE	17 - 4
3TJ-14536-40	8 - 28	5MX-E2116-00	3 - 4	4D0-E4173-00	8 - 31	5TL-E5315-00	11 - 23	5TL-E7611-00	13 - 18	5TL-F1731-00-GE	17 - 4
676-14548-00	8 - 19	5TL-E2118-00	3 - 6	5TL-E4174-00	8 - 32	5TL-E5333-00	11 - 15	5LW-E7620-00	13 - 10	51S-F1731-00-P1	17 - 4
4TV-14557-00	8 - 25	5MX-E2119-00	3 - 3	5TL-E4191-00	8 - 23	5LW-E5351-00	5 - 4	5TL-E7623-00	13 - 13	51S-F1731-00-P3	17 - 4
3TJ-14562-40	8 - 16	5LW-E2121-00	3 - 2	5TL-E4196-00	8 - 35	28D-E5362-00	10 - 34	5TL-E7641-01	13 - 17	51S-F1731-00-P4	17 - 4
3TJ-14564-40	8 - 6	2P2-E2151-00	3 - 8	5TL-E4275-00	8 - 29	5LW-E5363-00	10 - 26	5TL-F1730-00	13 - 25	5TL-F1731-00-P4	17 - 4
688-14592-00	8 - 20	4ST-E2156-00	3 - 11	5TL-E4280-00	8 - 30	5TL-E5371-00	10 - 5	5TL-E7664-00	13 - 29	51S-F1731-00-P5	17 - 4
5BF-14919-00	8 - 36	4CW-E2157-00	4 - 15	4D0-E4357-00	8 - 38	5LW-E5371-01	11 - 3	5TL-E7668-00	13 - 32	5TL-F1731-00-P8	17 - 4
3TJ-14952-40	8 - 15	5TL-E2170-00	4 - 1	5TL-E4411-10	7 - 7	5TL-E5373-00	10 - 6	5TL-F1767-00	13 - 26	5TL-F1731-00-P9	17 - 4
5LW-15659-01	11 - 6	5LW-E2170-10	4 - 1	5TL-E4412-00	7 - 8	5TL-E5379-00	11 - 24	5TL-E7683-00	13 - 30	5TL-F1731-00-PA	17 - 4
4VP-17632-00	13 - 12	5MX-E2176-00	4 - 3	28D-E443E-00	7 - 12	5TL-E5404-00	11 - 19	5TL-F7684-00	13 - 31	28D-F173E-N0	17 - 12
5LW-17653-00	13 - 14	5MX-E2210-10	4 - 9	4ST-E443E-00	11 - 4	5TL-E5407-01	11 - 14	5LW-F1110-01	15 - 1	28D-F173E-P0	17 - 12
18G-23411-00	19 - 17	5MX-E2213-01	4 - 10	5TL-E4452-00	7 - 11	14D-E5408-00	10 - 7	5TL-F1110-11	15 - 1	28D-F173E-R0	17 - 12
22F-23411-01	19 - 27	5VV-E2231-00	4 - 7	5TL-E4453-00	7 - 10	28D-E5411-00	11 - 1	28D-F1161-10	19 - 34	28D-F173E-S0	17 - 12
156-23412-00	19 - 24	5MX-E2241-00	4 - 8	5TL-E4462-00	7 - 15	5TL-E5413-00	11 - 32	5TL-F117K-01	21 - 14	28D-F173E-T0	17 - 12
22F-23412-01	19 - 26	5LW-E2611-00	6 - 17	5TL-E4531-00	8 - 26	5LW-E5417-00	10 - 14	28D-F1410-00	15 - 2		17 - 12
5TL-2341E-00	19 - 25	5TL-E2631-10	6 - 20	28D-E4610-00	9 - 1	14D-E5421-00	10 - 28	5TL-F1459-00	15 - 9	28D-F173F-N0	17 - 13
5TL-2341E-10	19 - 28	5TL-E2633-00	6 - 22	14D-E4613-00	9 - 14	5LW-E5451-00	11 - 2	28D-F1511-00-GE	16 - 1	28D-F173F-P0	17 - 13
4X8-24512-00	20 - 9	5LW-E2651-00	6 - 1	28D-E4714-00	9 - 18	5LW-E5453-00	10 - 17	51S-F1511-00-GE	16 - 1	28D-F173F-R0	17 - 13
36Y-2589H-00	29 - 8	5LW-E2652-00	6 - 3	28D-E4718-00	9 - 2	14D-E5461-00	10 - 29	28D-F1511-00-P0	16 - 1	28D-F173F-S0	17 - 13
28D-E1102-00	1 - 1	28D-E2653-00	6 - 5	5TL-E4747-00	9 - 10	5TL-E5471-00	11 - 29	51S-F1511-00-P1	16 - 1	28D-F173F-T0	17 - 13
28D-E1102-10	1 - 1	5LW-E2658-00	6 - 2	28D-E4770-00	9 - 4	5TL-E5472-00	11 - 16	28D-F1511-00-P3	16 - 1		17 - 13
5LW-E111F-00	4 - 12	5LW-E2659-02	6 - 7	5TL-E479M-20	9 - 11	5TL-E5473-00	11 - 36	51S-F1511-00-P3	16 - 1	51S-F1741-00-GE	17 - 5
5MX-E1145-00	4 - 4	5LW-E2668-02	6 - 8	5TL-E4803-10	9 - 24	5TL-E5474-00	11 - 37	28D-F1511-00-P4	16 - 1	5TL-F1741-00-GE	17 - 5
5LW-E1155-00	1 - 12	5TL-E2669-00	6 - 9	28D-E4871-00	1 - 8	5TL-E5475-00	11 - 21	51S-F1511-00-P4	16 - 1	51S-F1741-00-P1	17 - 5
5LW-E1165-00	1 - 10	5TL-E2681-10	6 - 21	5TL-E4872-00	9 - 19	5TL-E5484-00	11 - 38	28D-F1511-00-P5	16 - 1	51S-F1741-00-P3	17 - 5
5LW-E1181-00	1 - 21	5TL-E2682-00	6 - 4	28D-E4881-00	9 - 20	5TL-E5492-00	11 - 22	51S-F1511-00-P5	16 - 1	51S-F1741-00-P4	17 - 5
5LW-E1185-00	1 - 9	5LW-E3185-00	1 - 11	28D-E4901-20	8 - 1	5TL-E5494-00	11 - 25	3S0-F153E-00	17 - 16	5TL-F1741-00-P4	17 - 5
4ST-E1186-00	1 - 15	28D-E3300-10	5 - 1	14D-E4916-00	8 - 3	5TL-E5497-00	11 - 20		31 - 16	51S-F1741-00-P5	17 - 5
4YS-E1198-00	10 - 37	5TL-E3324-00	2 - 10	5TL-E4922-00	8 - 24	5MX-E5521-00	12 - 6	3S0-F153E-20	17 - 16	5TL-F1741-00-P8	17 - 5
5LW-E1310-00	1 - 25	5LW-E3411-00	5 - 5	4D0-E4923-00	8 - 13	28D-E5524-00	12 - 1		31 - 16	5TL-F1741-00-P9	17 - 5
51S-E1310-20	1 - 25	5LW-E3416-00	10 - 22	5TL-E4933-00	8 - 7	5LW-E5532-00	12 - 8	3S0-F153E-30	17 - 16	5TL-F1741-00-PA	17 - 5
5LW-E1351-00	1 - 26	5LW-E3452-00	2 - 7	4D0-E4936-00	8 - 5	5VV-E5570-10	12 - 4		31 - 16	5TL-F1746-00	17 - 10
5MX-E1391-00	10 - 23	5MX-E3474-01	7 - 6	5TL-E4940-00	8 - 2	28D-E5601-00	12 - 10	5TL-F1552-01	31 - 11	28D-F174G-N0	17 - 14
28D-E1400-00	2 - 1	5LW-E3475-00	5 - 2	4D0-E4943-00	8 - 11	5MX-E5620-01	12 - 16	5TL-F1611-00	16 - 4	28D-F174G-P0	17 - 14
28D-E1400-10	2 - 1	5TL-E3542-00	9 - 26	5TL-E4945-00	8 - 37	4VP-E5630-00	12 - 18	5TL-F1621-00	16 - 8	28D-F174G-R0	17 - 14
2D5-E1412-00	2 - 2	5TL-E3543-00	9 - 29	5TL-E4947-00	8 - 9	51S-E5650-00	12 - 5	5TL-F1691-00	7 - 23	28D-F174G-S0	17 - 14
2D5-E1422-00	2 - 6	5TL-E3545-00	9 - 25	5TL-E4948-02	8 - 12	5TL-E5650-10	12 - 5	5TL-F1711-00	17 - 1	28D-F174G-T0	17 - 14
5MX-E1603-10	2 - 15	5MX-E3556-01	7 - 3	5TL-E4984-00	8 - 21	5MX-E5657-00	13 - 20	51S-F1721-00-GE	17 - 3		17 - 14
5MX-E1605-10	2 - 15	5LW-E3569-00	6 - 19	5TL-E4985-00	8 - 18	5MX-E5673-00	12 - 19	5TL-F1721-00-GE	17 - 3	28D-F174H-N0	17 - 15
5MX-E1607-10	2 - 15	5MX-E3575-01	7 - 16	5TL-E4987-00	1 - 27	28D-E6111-00	13 - 1	51S-F1721-00-P1	17 - 3	28D-F174H-P0	17 - 15
5MX-E1631-00	2 - 12	28D-E3585-00	7 - 1	5TL-E4D25-00	8 - 8	2D5-E6111-00	13 - 1	51S-F1721-00-P3	17 - 3	28D-F174H-R0	17 - 15
5MX-E1633-10	2 - 13	5MX-E3595-10	7 - 2	5LW-E5113-00	10 - 33	5TL-E6611-03	13 - 24	51S-F1721-00-P4	17 - 3	28D-F174H-S0	17 - 15

NUMERICAL INDEX

PART NO.	REF. NO.	PART NO.	REF. NO.	PART NO.	REF. NO.	PART NO.	REF. NO.	PART NO.	REF. NO.	PART NO.	REF. NO.
28D-F174H-T0	17 - 15	5TP-F5111-01-35	23 - 1	28D-F6143-00-GE	28 - 4	28D-F8311-00-P5	31 - 1	28D-H3312-00	34 - 4	28D-WF53H-10	27 - 2
	17 - 15	5TL-F5168-00-33	22 - 1	51S-F6143-00-GE	28 - 4	51S-F8311-00-P5	31 - 1	28D-H331E-00	34 - 5	5TL-XH250-22	39 - 9
5TL-F2123-00	10 - 4	5WP-F5168-10-33	22 - 1	28D-F6143-00-P0	28 - 4	28D-F8312-00	31 - 4	5D9-H3350-00	40 - 10	90101-06278	26 - 14
28D-F2210-01	18 - 1	5TL-F5168-A0-33	22 - 1	51S-F6143-00-P1	28 - 4	14D-F834E-00	34 - 6	5MX-H3371-00	40 - 11		27 - 18
5MX-F2216-00	10 - 3	3AY-F5181-01	22 - 8	28D-F6143-00-P3	28 - 4	28D-F834E-00	34 - 7	5TL-H3509-10	35 - 5	90105-08048	15 - 7
28D-F3100-21	19 - 1		23 - 12	51S-F6143-00-P3	28 - 4	28D-F8356-00	15 - 14	28D-H3510-00	35 - 1	90105-08121	18 - 2
5TL-F3108-00	31 - 13	5TL-F5181-01	15 - 11	28D-F6143-00-P4	28 - 4	28D-F836K-01	31 - 7	5TL-H3511-10	35 - 2	90105-10036	28 - 2
28D-F3110-00	19 - 8	5TL-F5190-01	22 - 11	51S-F6143-00-P4	28 - 4	5LM-F8371-00	17 - 11	5TL-H3517-00	35 - 4	90105-10066	15 - 3
28D-F3111-00	19 - 19		23 - 15	28D-F6143-00-P5	28 - 4	5TL-F8385-90	31 - 9	5TL-H353F-10	35 - 3	90109-063F1	16 - 6
28D-F3126-20	19 - 5	5MX-F530K-00	26 - 7	51S-F6143-00-P5	28 - 4	28D-F8391-N0	31 - 14	28D-H3550-00	35 - 7	90109-06577	38 - 19
28D-F3136-20	19 - 2		27 - 11	5TL-F6145-00	28 - 5	5TL-F8391-P0	31 - 14	5TL-H3550-00	35 - 7	90109-06814	38 - 13
28D-F3141-00	19 - 15	5TL-F5311-00	27 - 1	5TL-F6199-00	21 - 5	28D-F8391-R0	31 - 14	5TL-H3912-20	38 - 12	90109-08881	30 - 11
5LM-F3144-00	19 - 14	5LW-F5326-01	26 - 4	5TL-F6240-00	28 - 9	28D-F8391-S0	31 - 14	5TL-H3922-00	38 - 18	90110-06846	10 - 31
3AY-F3145-00	19 - 3		27 - 8	5TL-F6241-00	28 - 10	28D-F8391-T0	31 - 14	5TL-H3941-10	38 - 2	90110-06849	10 - 32
	19 - 6	5TL-F5338-00-33	26 - 1	5TL-F6270-00	28 - 24		31 - 14	5TL-H3947-10	38 - 3	90111-06807	9 - 3
2JG-F3147-00	19 - 20	5TL-F5338-A0-33	26 - 1	2P2-F6280-11	28 - 11	28D-F8392-N0	31 - 15	5TL-H3955-20	38 - 6	90111-08815	24 - 2
5D9-F3152-00	19 - 11	5MX-F533A-00	26 - 12	2P2-F6290-11	28 - 12	28D-F8392-P0	31 - 15	14D-H3973-01	38 - 1		25 - 2
5P0-F3153-00	19 - 23		27 - 16	14D-F6311-00	28 - 13	28D-F8392-R0	31 - 15	5TL-H3975-31	38 - 9	90116-08841	1 - 5
5P0-F3156-00	19 - 4	5MX-F5351-00	26 - 10	28D-F6311-00	28 - 13	28D-F8392-S0	31 - 15	5TL-H397X-10	38 - 4	90119-05071	40 - 16
	19 - 7		27 - 14	14D-F6331-00	28 - 23	28D-F8392-T0	31 - 15	5TL-H3980-10	38 - 15	90119-06044	16 - 5
2JG-F3157-00	19 - 10	5LW-F5355-00	26 - 11	28D-F6331-00	28 - 23		31 - 15	5TL-H3980-20	38 - 21		21 - 6
509-F3158-L0	19 - 12		27 - 15	28D-F6351-00	28 - 15	5TL-H1410-11	32 - 2	28D-H4140-00	36 - 3		30 - 9
4D0-F3165-00	19 - 22	44D-F580U-00	24 - 3	14D-F6351-01	28 - 15	5TL-H1450-01	32 - 1	28D-H4310-00	36 - 1	90119-06086	6 - 16
28D-F3170-00	19 - 9	5D9-F580U-01	25 - 3	28D-F637G-00	28 - 16	5TL-H1450-02	32 - 1	5HV-H4314-00	36 - 2	90119-06182	7 - 17
278-F3181-50	19 - 13	5TL-F582U-21	24 - 1	5TL-F7111-01	30 - 1	5TL-H1450-10	32 - 1	5TL-H4374-00	36 - 4	90119-06211	7 - 18
14D-F3340-00	19 - 16	5TL-F582U-30	25 - 1	4YY-F7114-00	28 - 17	5TL-H1800-00	33 - 1	28D-H454E-00	31 - 12	90149-06011	20 - 10
4D0-F3346-00	19 - 18	5PO-F583T-03	29 - 4		30 - 14	5TL-H1801-00	33 - 2	28D-H4710-10	37 - 1	90149-10804	24 - 14
14D-F334G-00	19 - 21	5P0-F5852-00	29 - 7	5MX-F7114-00	15 - 5	3UH-H1828-01	33 - 4	4AC-H4714-00	37 - 2		25 - 14
5TL-F3416-00	19 - 29	5P0-F5854-00	29 - 6	28D-F7121-00	10 - 2	5TL-H182L-00	33 - 5	5YW-H4714-00	34 - 3	90153-06803	1 - 6
51S-F4110-00	20 - 1	5P0-F5855-00	29 - 10	5MX-F7121-00	10 - 2	5TL-H182M-00	33 - 3	5TL-H4721-00	37 - 5	90159-06033	21 - 15
5TL-F4110-01	20 - 1	5TL-F5867-01	29 - 9	5LW-F7254-00	30 - 6	5TL-H183G-00	33 - 6	5TL-H4723-00	37 - 7	90159-06067	17 - 9
28D-F4188-00	20 - 2	14D-F5872-00	29 - 1	28D-F7311-00	30 - 10	5TP-H1940-00	40 - 9	5TL-H4735-00	37 - 6	90159-06817	31 - 5
5TL-F4311-00	20 - 4	28D-F5875-00	19 - 31	28D-F7430-00	30 - 15	5TL-H1960-00	40 - 7	5TL-H4743-00	37 - 4	90163-05801	17 - 6
5TL-F4312-10	20 - 5	28D-F5876-00	19 - 32	14D-F7431-00	30 - 16	3AY-H2110-20	39 - 1	28D-H5540-01	40 - 1	90163-05803	7 - 14
4TT-F4500-00	20 - 8	5YP-F5917-00	24 - 6	28D-F7432-00	30 - 17	3AY-H2110-30	39 - 1	5D9-H5546-00	40 - 2	90170-05302	3 - 10
4YY-F4610-00	20 - 12		25 - 6	28D-F7440-00	30 - 23	28D-H2116-00	39 - 8	5TL-H5752-10	40 - 13	90170-10317	13 - 7
28D-F470F-00	21 - 2	5P0-F5919-00	24 - 11	14D-F7441-00	30 - 24	5TL-H2129-00	39 - 4	4US-H5753-00	40 - 15	90173-06801	7 - 22
5TL-F4726-00	21 - 9		25 - 11	28D-F7442-00	30 - 25	5TL-H2131-00	39 - 5	5ER-H5757-00	40 - 14	90175-06013	28 - 21
5TL-F4727-00	21 - 8	5YP-F5924-00	24 - 12	5TL-F7481-00	30 - 7	5TL-H2150-00	39 - 6	5P0-W0041-00	29 - 5	90176-08805	1 - 19
28D-F4730-01	21 - 1		25 - 12	5TL-F8100-00	15 - 16	5TL-H2151-00	39 - 7	5D9-W0045-01	25 - 9	90179-12248	32 - 6
5TL-F473R-00	21 - 4	5YP-F5925-01	24 - 10	28D-F8311-00-GE	31 - 1	5TL-H2310-10	40 - 3	3C1-W0045-10	24 - 9	90179-25033	19 - 30
5TL-F4741-00	21 - 3		25 - 10	51S-F8311-00-GE	31 - 1	5MX-H2370-00	40 - 6	5YP-W0047-50	24 - 5	90183-05807	16 - 7
28D-F4773-10-35	21 - 17	5YP-F5937-00	24 - 7	28D-F8311-00-P0	31 - 1	5TP-H2552-00	39 - 10		25 - 5		21 - 7
5TL-F4780-00	21 - 11		25 - 7	51S-F8311-00-P1	31 - 1	28D-H2590-00	39 - 13	4C9-W0048-00	24 - 8		28 - 6
28D-F478E-00	21 - 16	5YP-F5939-00	24 - 13	28D-F8311-00-P3	31 - 1	5TL-H2911-20	38 - 11		25 - 8		30 - 8
5TL-F478E-00	21 - 16		25 - 13	51S-F8311-00-P3	31 - 1	28D-H3301-10	34 - 1	5P0-W0057-00	24 - 4		37 - 9
5TL-F4792-00	21 - 12	28D-F6110-00	28 - 1	28D-F8311-00-P4	31 - 1	5HV-H3311-00	34 - 2		25 - 4	90185-08009	30 - 12
5TL-F5104-01	23 - 5	28D-F6113-00	28 - 26	51S-F8311-00-P4	31 - 1		37 - 3	28D-WE445-10	7 - 9	90185-08017	9 - 8

NUMERICAL INDEX

PART NO.	REF. NO.	PART NO.	REF. NO.	PART NO.	REF. NO.	PART NO.	REF. NO.	PART NO.	REF. NO.	PART NO.	REF. NO.
90185-10808	28 - 3	90387-10277	23 - 11	91317-06025	12 - 17	93306-300YF	22 - 4	95602-06100	38 - 14	98507-05020	5 - 3
90185-10811	22 - 9	90387-16009	13 - 15		29 - 11		23 - 4		38 - 20	98507-05025	28 - 25
	23 - 13	90387-16811	13 - 15	91317-08035	9 - 16	93306-301XT	14 - 2	95602-08200	15 - 8	98507-06014	9 - 22
90185-12008	15 - 13	90401-10812	29 - 2	91401-25015	30 - 21	93306-305X3	2 - 8	9560L-10200	15 - 4		28 - 19
90185-14814	26 - 15	90413-05014	9 - 31		30 - 29	93306-305YV	2 - 8	95707-06500	21 - 10	98507-06016	32 - 4
	27 - 19	90430-06014	1 - 7	91701-08035	30 - 20	93306-372Y1	2 - 9		21 - 13		40 - 4
90201-06060	13 - 2	90430-08119	10 - 25		30 - 28	93306-372Y7	2 - 9	95707-08500	9 - 15	98507-06020	6 - 10
90201-06088	6 - 26	90445-08815	39 - 2	91810-14809	1 - 22	93306-809Y0	12 - 2	95707-10500	9 - 6		6 - 25
90201-08043	9 - 12	90445-08819	39 - 3		1 - 23	93310-528Y8	2 - 4		26 - 5	98507-06025	6 - 14
	9 - 17	90462-10802	11 - 13		10 - 10	93311-315Y6	14 - 3		27 - 9	98507-06040	28 - 18
90201-081R9	9 - 9	90464-60810	7 - 21		10 - 30	93410-20070	14 - 11	95807-06010	15 - 15	9850L-06008	38 - 5
90201-08609	1 - 17	90464-70800	39 - 14		11 - 9	93440-45827	12 - 3		36 - 5	9870M-03008	38 - 16
90201-10018	12 - 7	90465-06376	7 - 20	92902-08200	1 - 18	93450-16068	2 - 14		40 - 12	98907-06010	11 - 8
90201-10118	29 - 3	90465-10037	40 - 5	92902-10200	24 - 15	93501-04830	30 - 19	95807-06012	19 - 33	98907-06012	11 - 33
90201-10119	30 - 3	90467-08075	9 - 28		25 - 15		30 - 27		19 - 35	99001-08600	30 - 4
90201-10141	18 - 5		20 - 7	92907-05600	11 - 18	94107-14802	22 - 5		20 - 3	99009-15400	12 - 14
90201-101J1	22 - 10	90467-08804	9 - 27	92907-06200	11 - 28		23 - 6	95807-06014	16 - 3	99009-17400	13 - 4
	23 - 14	90467-09006	1 - 28		11 - 31	94108-14802	26 - 2	95807-06025	31 - 2	99480-05010	10 - 18
	18 - 4		1 - 29		11 - 35		27 - 3	95807-08016	30 - 22		
90201-12190	15 - 12		20 - 6	92907-06600	6 - 11	94207-14802	22 - 6		30 - 30		
90201-12688	32 - 5	90467-11106	10 - 8		6 - 15		23 - 7	95817-06065	7 - 5		
	26 - 16		10 - 9		9 - 23	94208-14802	26 - 3	95817-08016	4 - 5		
90201-14016	27 - 20		11 - 5		39 - 12		27 - 4		10 - 24		
	14 - 4	90467-12807	7 - 13	93101-21803	13 - 11	94307-14802	23 - 8	95817-08045	9 - 7		
90201-15008	14 - 5	90467-13806	9 - 21	93102-15801	12 - 15		27 - 5	95817-10035	9 - 5		
90201-15016	12 - 13	90480-10332	9 - 13	93102-17812	13 - 6	94414-14801	23 - 9	95827-06020	21 - 18		
90201-154E8	13 - 16	90480-13428	37 - 10	93102-19800	10 - 15	94416-14801	27 - 6	97007-05020	11 - 17		
90201-16008	26 - 17	90480-13M24	9 - 30	93102-22810	10 - 21	94568-B3090	4 - 6	97507-06525	33 - 7		
90201-20276	27 - 21	90480-14817	6 - 23	93102-26800	14 - 10	94700-00828	1 - 20	97607-05216	38 - 7		
	20 - 11	90501-12743	30 - 18	93106-20816	22 - 3	94700-00886	1 - 20	97607-06216	40 - 8		
90202-05193	26 - 13		30 - 26		23 - 3	95027-06010	13 - 3	97707-50012	17 - 2		
90206-14093	27 - 17	90501-16003	28 - 20	93210-06800	13 - 9	95027-06012	6 - 18		17 - 8		
	13 - 21	90501-16004	5 - 6	93210-07802	26 - 6		12 - 9		28 - 8		
90208-12050	14 - 8	90506-12001	26 - 8		27 - 10	95027-06016	10 - 20		38 - 8		
90208-21002	13 - 19		27 - 12	93210-09800	1 - 4		11 - 26	97707-50016	17 - 7		
90214-14002	30 - 2	90506-15001	26 - 9	93210-148H8	10 - 27		11 - 30		28 - 7		
90249-10002	28 - 22		27 - 13	93210-15862	4 - 14		11 - 34		31 - 3		
90249-12008	2 - 11	90506-20514	30 - 13	93210-25803	7 - 4	95027-06025	11 - 10		31 - 6		
90280-03017	10 - 36	90506-35002	30 - 5	93210-29800	5 - 7	95027-06035	11 - 11		31 - 8		
90340-12808	12 - 12	90508-32768	12 - 11	93210-448G4	1 - 16	95027-06050	10 - 13		31 - 10		
90380-15809	6 - 24	90560-10292	22 - 2	93210-71462	1 - 13		11 - 27		34 - 8		
90387-06052	6 - 6		23 - 2	93211-07800	10 - 16	95027-06060	10 - 11		35 - 6		
90387-067V1	7 - 19	91317-06012	4 - 13	93300-638Y8	13 - 8		11 - 12		38 - 10		
90387-06891	16 - 2	91317-06014	39 - 11	93306-002X2	4 - 2	95027-06070	10 - 19	97707-60430	6 - 13		
90387-068S1	15 - 6	91317-06016	4 - 11	93306-003YR	15 - 10	95027-06100	1 - 24	97707-60530	6 - 12		
90387-08754	23 - 10	91317-06020	1 - 14	93306-054X9	14 - 9		10 - 12	9770L-40620	37 - 8		
90387-08815	27 - 7		32 - 3	93306-203YY	13 - 5	95307-10600	18 - 3	98502-04012	8 - 22		
	22 - 7		38 - 17		14 - 12	95307-12700	13 - 22	98507-05016	28 - 14		